



MINISTRY OF JUSTICE

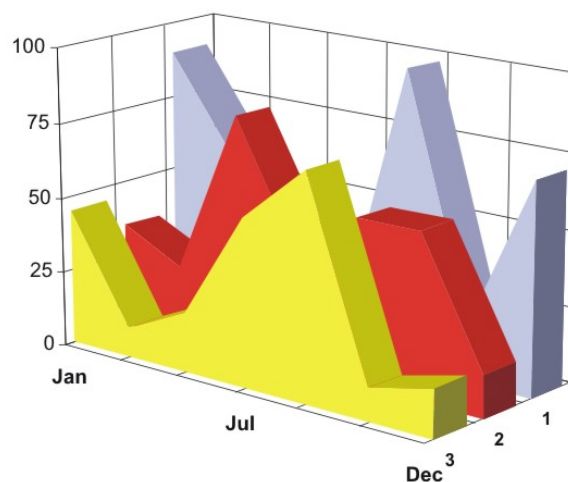
THE NATIONAL TRADE REGISTER OFFICE

București, Bd. Unirii nr. 74, Bl. J3b, tronson II+III, sector 3; Telefon: +40 21 316.08.04, 316.08.10; Fax: +40 21 316.08.03; Cod poștal: 030837  
Website: [www.onrc.ro](http://www.onrc.ro); E-mail: [onrc@onrc.ro](mailto:onrc@onrc.ro); Cod identificare Fiscală: 14942091

# OPERATIONS IN THE CENTRAL TRADE REGISTER

## STATISTIC SYNTHESIS

### OF RECORDS IN THE CENTRAL TRADE REGISTER - 31<sup>th</sup> December 2011 - provisional data -



- ISSUE No. 241 -

# MINISTRY OF JUSTICE

## THE NATIONAL TRADE REGISTER OFFICE

---

- Operations such as incorporation of trading companies, submission of changes, and strike-off are carried out based on Law No.26/1990, as republished, Law No.31/1990, as republished and on the Methodological Norms no. P/608/1998.
- This work reflects the evolution of the operations with the Trade Register Office attached to Bucharest Law Court and the Trade Register Offices attached to County Law Courts.
- The data contained in the Central Trade Register refer to operations for which law sets out the obligation of being registered in the trade registers kept by the 42 trade register offices attached to law courts.

*• The content of this publication shall not be reproduced, partly or entirely, in original or modified form, and shall not be stored in a recovery system and shall not be transmitted in any form or by any means without prior written authorization of the Ministry of Justice – The National Trade Register Office.*

*• The content of this publication December be used in articles, studies, books, as supporting or explanatory data only by clearly and accurately indicating the source.*

# CONTENTS

Page

<b>1 Definitions</b>	<b>1</b>
<b>2.1 Data related to the period December 1990 – December 2011</b>	<b>3</b>
<b>Table no. 1 – Operations performed in the trade registers by categories of registration during December 1990 –December 2011, total by country and by counties, shares of counties in the total by country</b>	<b>3</b>
<b>Table no. 2 – Operations performed in the trade registers by categories of registration during 1990 –December 2011, total by country and counties, share of categories of operations in the total of each county</b>	<b>4</b>
<b>Table no. 3 – Number and structure of incorporations in the trade registers during 1990-December 2011</b>	<b>5</b>
<b>Chart no. 1 – Structure by years of incorporations in the trade register</b>	
<b>Table no. 4 – Number of incorporations in the trade registers by counties and capital sources during 1990 - December 2011</b>	<b>6</b>
<b>Table no. 5 – Number of incorporations in the trade registers by counties and business categories during 1990 –December 2011</b>	<b>7</b>
<b>2.2 Data related to December 2011</b>	<b>8</b>
<b>Table no. 6 – Operations performed in the trade registers by counties and categories of registrations in the month of December 2011</b>	<b>8</b>
<b>Table no. 7 – Number of incorporations in the trade registers by counties and capital sources in the month of December 2011</b>	<b>9</b>
<b>Table no. 8 – Number of incorporations in the trade registers by counties and business categories in the month of December 2011</b>	<b>10</b>
<b>Table no. 9 –Number of incorporations in the trade registers by domains of activity and business categories in the month of December 2011</b>	<b>11-12</b>
<b>Table no. 10 – Number of incorporated trading companies and the value of subscribed share capital, by counties, in the month of December 2011</b>	<b>13</b>
<b>Table no. 11– Number of incorporated trading companies and the value of subscribed share capital by legal forms, in the month of December 2011</b>	<b>14</b>
<b>Chart no. 5 – Average value of subscribed share capital by types of trading companies in the month of December 2011</b>	<b>14</b>

## Definitions

The Trade Register Office was established based on Law No. 26/1990, as republished and subsequently amended and supplemented, operates as an active institution since 1990 and is twofold structured:

- at national level, represented by the National Trade Register Office organized under the authority of the Ministry of Justice
- at local level, represented by the 42 Trade Register Offices attached to Law Courts, organized under the subordination of the National Trade Register Office

Categories of persons liable to registration in the trade register:

- natural persons: authorized natural persons, individual enterprises and family enterprises currently carrying on trading activities;

- legal persons represented by: Trading Companies, National Societies and Companies, National R&D Institutes, Autonomous Administrations, Co-operative Societies, Agricultural Co-operatives, Co-operative Organizations, Economic Interest Groupings, European Economic Interest Groupings, European Societies, European Co-operative Societies, branches of trading companies with legal establishment, operation and incorporation regime of trading company legal form under which they were incorporated.

- **Terms used in tables and charts**

- **Number of companies**, depending on the table, represents the number of trading companies incorporated during the reference period, the number of trading companies struck-off from the trade register. The following forms of organization are included: limited liability companies, joint-stock companies, limited partnerships by share, limited partnerships, general partnerships, and branches thereof.

- **Value of subscribed share capital:**

- **total, expressed in national currency:** the share capital value resulted by adding up the subscribed values (in cash and in kind) in national currency (lei)

- **Regions of economic development:**

<i>North-East:</i>	Suceava, Botoșani, Neamț, Iași, Bacău, Vaslui.
<i>South-East:</i>	Vrancea, Galați, Buzău, Brăila, Tulcea, Constanța.
<i>South-Muntenia:</i>	Argeș, Dâmbovița, Prahova, Teleorman, Giurgiu, Călărași, Ialomița.
<i>South-West Oltenia:</i>	Gorj, Vâlcea, Dolj, Mehedinți, Olt.
<i>West:</i>	Arad, Caraș-Severin, Hunedoara, Timiș.
<i>North-West:</i>	Bihor, Bistrița, Cluj, Satu Mare, Sălaj, Maramureș.
<i>Center:</i>	Alba, Brașov, Covasna, Harghita, Mureș, Sibiu.
<i>Bucharest-Ilfov:</i>	București, Ilfov.

NACE Code – The classification of economic activities in the national economy was approved by GO No. 656/1997, amended by Order No 601/2002 and Order no. 337/2007 of the President of the National Institute of Statistics, and complies with the international classification used in statistic reports and official documents. The activities are ranked by the harmonization principle, by sections, divisions, groups and classes.

### Abbreviations

- **PF** - Natural Person; the following forms of organization are included in this category: natural persons and family associations registered until 25.04.2008, authorized natural persons, individual enterprises and family enterprises.
- **SNC** - General Partnership
- **SCS** - Limited Partnership
- **SCA** - Limited Partnership by Share
- **SA** - Joint-Stock Company
- **SRL** - Limited Liability Company
- **RA** - Autonomous Administration
- **APJ** - Other legal persons having the obligation to register in the trade register: National R&D Institutes, Economic Interest Groupings, European Economic Interest Groupings, European Societies, European Co-operative Societies, Agricultural Co-operatives, Co-operative Organizations.

### Sources of Information:

The integrated IT system of the trade register is designed by The National Trade Register Office in compliance with the provisions of the related legislation in force. The source of information consists of the trade registers organized in computerized system, kept by the trade register offices attached to law courts.

Table no. 1

**Operations performed in the trade registers by categories of registration during  
December 1990 – December 2011, total by country and by counties, share of  
counties in the total by country**

Counties	Total of registered operations		out of which :					
			Registered companies		Changes in statutory documents		Strike off companies	
	No.	%	No.	%	No.	%	No.	%
0	1	2	3	4	7	8	9	10
<b>Total ROMÂNIA</b>	<b>15331225</b>	<b>100,0</b>	<b>2219486</b>	<b>100,0</b>	<b>12230799</b>	<b>100,0</b>	<b>880940</b>	<b>100,0</b>
ALBA	231923	1,5	38472	1,7	180967	1,5	12484	1,4
ARAD	361652	2,4	53923	2,4	285281	2,3	22448	2,5
ARGES	370331	2,4	57290	2,6	295470	2,4	17571	2,0
BACAU	354228	2,3	55107	2,5	275001	2,2	24120	2,7
BIHOR	463523	3,0	69357	3,1	370167	3,0	23999	2,7
BISTRITA-NASAUD	187145	1,2	29396	1,3	146548	1,2	11201	1,3
BOTOSANI	144197	0,9	27276	1,2	105180	0,9	11741	1,3
BRASOV	590151	3,8	68067	3,1	497944	4,1	24140	2,7
BRAILA	232614	1,5	31109	1,4	191813	1,6	9692	1,1
BUZAU	266172	1,7	39709	1,8	208801	1,7	17662	2,0
CARAS-SEVERIN	176173	1,1	26833	1,2	136613	1,1	12727	1,4
CALARASI	139550	0,9	22331	1,0	107558	0,9	9661	1,1
CLUJ	676405	4,4	101881	4,6	540451	4,4	34073	3,9
CONSTANTA	660194	4,3	90988	4,1	530793	4,3	38413	4,4
COVASNA	131043	0,9	18895	0,9	104432	0,9	7716	0,9
DAMBOVITA	220169	1,4	41966	1,9	158343	1,3	19860	2,3
DOLJ	417789	2,7	59302	2,7	334666	2,7	23821	2,7
GALATI	389735	2,5	52833	2,4	314480	2,6	22422	2,5
GIURGIU	122671	0,8	18921	0,9	96019	0,8	7731	0,9
GORJ	230911	1,5	26449	1,2	193939	1,6	10523	1,2
HARGHITA	228532	1,5	34481	1,6	182288	1,5	11763	1,3
HUNEDOARA	307256	2,0	45265	2,0	243069	2,0	18922	2,1
IALOMITA	140325	0,9	20506	0,9	109668	0,9	10151	1,2
IASI	511017	3,3	74432	3,4	409801	3,4	26784	3,0
MARAMURES	326239	2,1	55864	2,5	246052	2,0	24323	2,8
MEHEDINTI	155647	1,0	25067	1,1	119537	1,0	11043	1,3
MURES	419895	2,7	54751	2,5	342273	2,8	22871	2,6
NEAMT	322459	2,1	46694	2,1	254516	2,1	21249	2,4
OLT	182100	1,2	30981	1,4	137914	1,1	13205	1,5
PRAHOVA	514919	3,4	73494	3,3	411450	3,4	29975	3,4
SALAJ	138711	0,9	22648	1,0	106722	0,9	9341	1,1
SATU MARE	240364	1,6	37810	1,7	186039	1,5	16515	1,9
SIBIU	334282	2,2	43635	2,0	273837	2,2	16810	1,9
SUCEAVA	359823	2,3	54768	2,5	278668	2,3	26387	3,0
TELEORMAN	163053	1,1	26006	1,2	127458	1,0	9589	1,1
TIMIS	514704	3,4	78566	3,5	409119	3,3	27019	3,1
TULCEA	179477	1,2	22466	1,0	146994	1,2	10017	1,1
VASLUI	189173	1,2	27297	1,2	148361	1,2	13515	1,5
VALCEA	234629	1,5	35678	1,6	182516	1,5	16435	1,9
VRANCEA	187136	1,2	27439	1,2	150676	1,2	9021	1,0
MUN. BUCURESTI	3052308	19,9	406251	18,3	2483870	20,3	162187	18,4
ILFOV	262600	1,7	45282	2,0	205505	1,7	11813	1,3

\*\*\* Less 0,01%

Table no. 2

Operations performed in the trade registers during December 1990 – December 2011,  
total by country and counties, share of categories of operations in the total of each  
county

Counties	Total of registered operations		out of which :					
			Registered companies		Changes in statutory documents		Strike off companies	
	No.	%	No.	%	No.	%	No.	%
0	1	2	3	4	7	8	11	12
<b>Total ROMANIA</b>	<b>15331225</b>	<b>100,0</b>	<b>2219486</b>	<b>14,5</b>	<b>12230799</b>	<b>79,8</b>	<b>880940</b>	<b>5,7</b>
ALBA	231923	100,0	38472	16,6	180967	78,0	12484	5,4
ARAD	361652	100,0	53923	14,9	285281	78,9	22448	6,2
ARGES	370331	100,0	57290	15,5	295470	79,8	17571	4,7
BACAU	354228	100,0	55107	15,6	275001	77,6	24120	6,8
BIHOR	463523	100,0	69357	15,0	370167	79,9	23999	5,2
BISTRITA-NASAUD	187145	100,0	29396	15,7	146548	78,3	11201	6,0
BOTOSANI	144197	100,0	27276	18,9	105180	72,9	11741	8,1
BRASOV	590151	100,0	68067	11,5	497944	84,4	24140	4,1
BRAILA	232614	100,0	31109	13,4	191813	82,5	9692	4,2
BUZAU	266172	100,0	39709	14,9	208801	78,4	17662	6,6
CARAS-SEVERIN	176173	100,0	26833	15,2	136613	77,5	12727	7,2
CALARASI	139550	100,0	22331	16,0	107558	77,1	9661	6,9
CLUJ	676405	100,0	101881	15,1	540451	79,9	34073	5,0
CONSTANTA	660194	100,0	90988	13,8	530793	80,4	38413	5,8
COVASNA	131043	100,0	18895	14,4	104432	79,7	7716	5,9
DAMBOVITA	220169	100,0	41966	19,1	158343	71,9	19860	9,0
DOLJ	417789	100,0	59302	14,2	334666	80,1	23821	5,7
GALATI	389735	100,0	52833	13,6	314480	80,7	22422	5,8
GIURGIU	122671	100,0	18921	15,4	96019	78,3	7731	6,3
GORJ	230911	100,0	26449	11,5	193939	84,0	10523	4,6
HARGHITA	228532	100,0	34481	15,1	182288	79,8	11763	5,1
HUNEDOARA	307256	100,0	45265	14,7	243069	79,1	18922	6,2
IALOMITA	140325	100,0	20506	14,6	109668	78,2	10151	7,2
IASI	511017	100,0	74432	14,6	409801	80,2	26784	5,2
MARAMURES	326239	100,0	55864	17,1	246052	75,4	24323	7,5
MEHEDINTI	155647	100,0	25067	16,1	119537	76,8	11043	7,1
MURES	419895	100,0	54751	13,0	342273	81,5	22871	5,4
NEAMT	322459	100,0	46694	14,5	254516	78,9	21249	6,6
OLT	182100	100,0	30981	17,0	137914	75,7	13205	7,3
PRAHOVA	514919	100,0	73494	14,3	411450	79,9	29975	5,8
SALAJ	138711	100,0	22648	16,3	106722	76,9	9341	6,7
SATU MARE	240364	100,0	37810	15,7	186039	77,4	16515	6,9
SIBIU	334282	100,0	43635	13,1	273837	81,9	16810	5,0
SUCEAVA	359823	100,0	54768	15,2	278668	77,4	26387	7,3
TELEORMAN	163053	100,0	26006	15,9	127458	78,2	9589	5,9
TIMIS	514704	100,0	78566	15,3	409119	79,5	27019	5,2
TULCEA	179477	100,0	22466	12,5	146994	81,9	10017	5,6
VASLUI	189173	100,0	27297	14,4	148361	78,4	13515	7,1
VALCEA	234629	100,0	35678	15,2	182516	77,8	16435	7,0
VRANCEA	187136	100,0	27439	14,7	150676	80,5	9021	4,8
MUN. BUCURESTI	3052308	100,0	406251	13,3	2483870	81,4	162187	5,3
ILFOV	262600	100,0	45282	17,2	205505	78,3	11813	4,5

Table no.3

Number and structure of incorporations in the trade registers during December 1990  
- December 2011

Period (year, month)	Registered companies		Percentage	
	No.	%	%	
0	1	2	3	
Total, 31 December 2011, out of which	2219486	100,0		
Period 1990 - 2000	849469	38,9		
Year 2001	61265	2,8		
Year 2002	84780	3,8		
Year 2003	123582	5,6		
Year 2004	144284	6,5		
Year 2005	159464	7,2		
Year 2006	135371	6,1		
Year 2007	144728	6,5		
Year 2008	144173	6,5		
Year 2009	116031	5,2		
Year 2010	122831	5,5		
Year 2011 (I - XII) out of which :	133508	4,9	100,0	
January	7783			6,2
February	10877			8,6
March	14482			11,5
April	10436			8,3
May	13114			10,4
June	15750			12,5
July	16462			13,1
August	9012			7,2
September	9209			7,3
October	9009			7,2
November	9715			7,7
December	7659			6,8

Note: Column 2 reveals the annual structure of incorporations; column 3 reveals the structure by months during the current year.

Diagram no.1

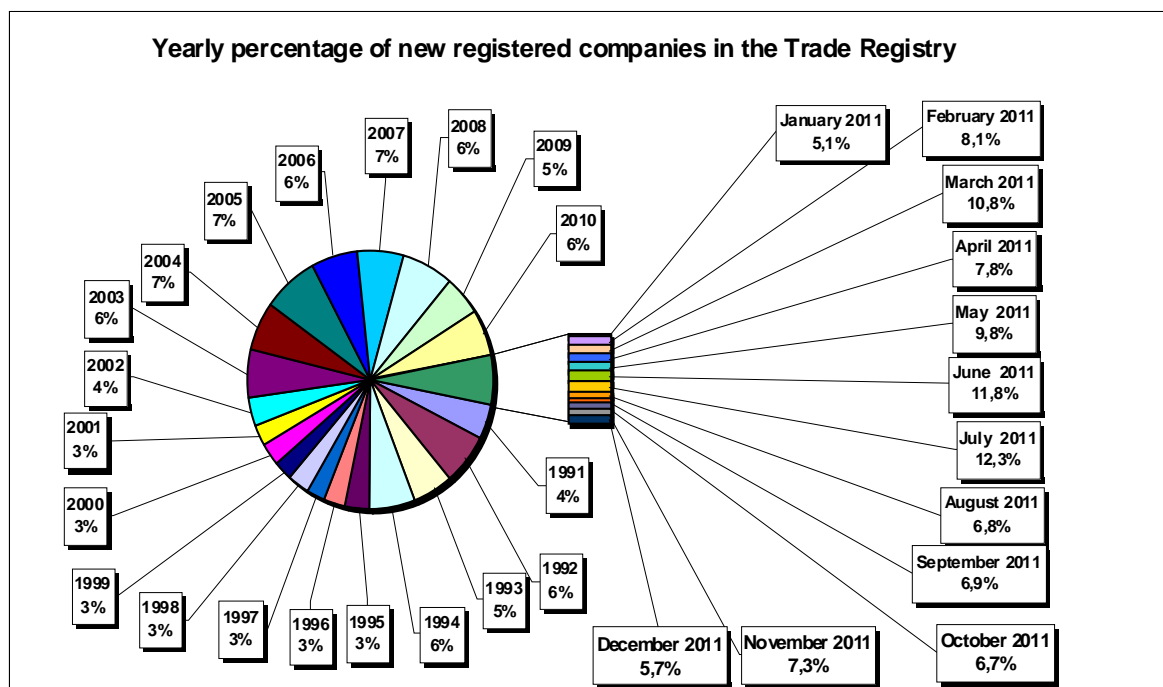


Table no. 4

**Number of incorporations in the trade registers by counties and capital sources during  
December 1990 - December 2011**

Counties	Total		out of which:						Mixed capital (state+private)	Ranking by: *
			Private capital				State majority capital			
			out of which:				out of which:			
			PF	Companies	SC	APJ	RA	Companies		
			No.	No.	No.	No.	No.	No.		
0	1	2	3	4	5	6	6	7	8	9
<b>Total ROMANIA</b>	<b>2219486</b>	<b>100,0</b>	<b>679704</b>	<b>1519447</b>	<b>2047</b>	<b>5802</b>	<b>1395</b>	<b>2421</b>	<b>8677</b>	<b>X</b>
ALBA	38472	1,7	16837	21194	36	150	38	47	170	23
ARAD	53924	2,4	21958	31327	60	171	30	43	336	15
ARGES	57289	2,6	20545	36303	48	177	31	32	153	10
BACAU	55107	2,5	20757	33728	154	162	35	46	226	12
BIHOR	69357	3,1	21317	47409	63	157	40	62	309	7
BISTRITA-NASAUD	29396	1,3	12820	16261	46	102	29	29	109	29
BOTOSANI	27276	1,2	13788	12947	40	185	21	176	119	32
BRASOV	68101	3,1	17626	49980	58	129	49	87	172	8
BRAILA	31075	1,4	10145	20543	42	102	30	46	167	27
BUZAU	39709	1,8	13175	26132	46	155	28	42	131	22
CARAS-SEVERIN	26833	1,2	10219	16221	42	109	39	65	138	33
CALARASI	22331	1,0	7797	14224	22	93	18	77	100	39
CLUJ	101881	4,6	30159	71138	62	163	52	43	264	2
CONSTANTA	90988	4,1	21073	68970	87	212	51	52	543	3
COVASNA	18895	0,9	7809	10807	42	72	24	32	109	42
DAMBOVITA	41966	1,9	20683	20849	32	141	30	75	156	21
DOLJ	59302	2,7	15821	42968	39	172	40	58	204	9
GALATI	52833	2,4	14391	38043	35	140	30	51	143	16
GIURGIU	18922	0,9	5102	13476	15	85	23	110	111	41
GORJ	26448	1,2	8249	17755	26	184	51	83	100	34
HARGHITA	34481	1,6	16105	17916	64	97	24	43	232	26
HUNEDOARA	45265	2,0	14346	30376	33	85	42	96	287	19
IALOMITA	20506	0,9	8339	11905	27	83	15	46	91	40
IASI	74432	3,4	26143	47575	89	171	34	78	344	5
MARAMURES	55864	2,5	24489	31001	43	129	38	41	124	11
MEHEDINTI	25067	1,1	9951	14863	19	89	19	27	99	36
MURES	54751	2,5	22346	31943	68	161	30	34	169	14
NEAMT	46694	2,1	18769	27465	66	168	30	30	166	17
OLT	30981	1,4	12980	17595	27	166	26	64	123	28
PRAHOVA	73494	3,3	25628	47216	67	185	52	74	272	6
SALAJ	22648	1,0	10109	12276	41	111	19	28	64	37
SATU MARE	37810	1,7	14339	23129	41	104	21	42	135	24
SIBIU	43635	2,0	13665	29504	38	122	35	110	161	20
SUCEAVA	54768	2,5	27236	26921	73	219	31	67	221	13
TELEORMAN	26006	1,2	10227	15329	33	166	21	46	184	35
TIMIS	78566	3,5	16484	61400	69	155	38	69	351	4
TULCEA	22466	1,0	8810	13279	37	67	19	42	212	38
VASLUI	27297	1,2	13937	13029	22	116	16	41	136	31
VALCEA	35678	1,6	15696	19544	65	176	42	40	115	25
VRANCEA	27439	1,2	9954	17175	35	116	17	28	114	30
MUN. BUCURESTI	406251	18,3	43044	361622	64	157	116	106	1143	1
ILFOV	45282	2,0	6836	38109	31	98	21	13	174	18

\*) The total number of incorporations (col 1)

Table no. 5

**Number of incorporations in the trade registers by counties and business categories  
during December 1990 – December 2011**

County	Total		out of which:							
			PF	companies: 1530545				RA	SC	APJ
	SNC	SCS		SRL	SA					
	No.	%	No.	No.	No.	No.	No.	No.	No.	
0	1	2	3	4	5	6	7	8	9	10
<b>Total ROMANIA</b>	<b>2219486</b>	<b>100,0</b>	<b>679704</b>	<b>32683</b>	<b>1631</b>	<b>1461913</b>	<b>34311</b>	<b>1395</b>	<b>2047</b>	<b>5802</b>
ALBA	38472	1,7	16837	890	11	19932	578	38	36	150
ARAD	53923	2,4	21958	54	13	30920	717	30	60	171
ARGES	57290	2,6	20545	107	15	35521	846	31	48	177
BACAU	55107	2,5	20757	1299	4	31933	763	35	154	162
BIHOR	69357	3,1	21317	127	48	46666	939	40	63	157
BISTRITA-NASAUD	29396	1,3	12820	146	26	15791	436	29	46	102
BOTOSANI	27276	1,2	13788	468	1	12310	463	21	40	185
BRASOV	68067	3,1	17626	239	21	49036	909	49	58	129
BRAILA	31109	1,4	10145	376	13	19856	545	30	42	102
BUZAU	39709	1,8	13175	3747	46	21915	597	28	46	155
CARAS-SEVERIN	26883	1,2	10219	118	9	15820	477	39	42	109
CALARASI	22331	1,0	7797	609	3	13421	368	18	22	93
CLUJ	101881	4,6	30159	2112	21	67929	1383	52	62	163
CONSTANTA	90988	4,1	21073	311	23	67685	1546	51	87	212
COVASNA	18895	0,9	7809	148	4	10482	314	24	42	72
DAMBOVITA	41966	1,9	20683	60	8	20503	509	30	32	141
DOLJ	59302	2,7	15821	1560	8	40733	929	40	39	172
GALATI	52833	2,4	14391	1574	6	35783	874	30	35	140
GIURGIU	18921	0,9	5102	35	8	13315	338	23	15	85
GORJ	26449	1,2	8249	29	1	17400	509	51	26	184
HARGHITA	34481	1,6	16105	62	7	17616	506	24	64	97
HUNEDOARA	45265	2,0	14346	1166	98	28794	701	42	33	85
IALOMITA	20506	0,9	8339	269	12	11406	355	15	27	83
IASI	74432	3,4	26143	508	112	46322	1053	34	89	171
MARAMURES	55864	2,5	24489	1928	23	28596	618	38	43	129
MEHEDINTI	25067	1,1	9951	427	3	14213	346	19	19	89
MURES	54751	2,5	22346	37	34	31381	694	30	68	161
NEAMT	46694	2,1	18769	3293	30	23651	687	30	66	168
OLT	30981	1,4	12980	1611	1	15664	506	26	27	166
PRAHOVA	73494	3,3	25628	3122	15	43477	948	52	67	185
SALAJ	22648	1,0	10109	600	4	11462	302	19	41	111
SATU MARE	37810	1,7	14339	283	10	22526	486	21	41	104
SIBIU	43635	2,0	13665	778	50	28256	691	35	38	122
SUCEAVA	54768	2,5	27236	438	8	26157	606	31	73	219
TELEORMAN	26006	1,2	10227	272	399	14451	437	21	33	166
TIMIS	78566	3,5	16484	617	35	59865	1303	38	69	155
TULCEA	22466	1,0	8810	1363	114	11570	486	19	37	67
VASLUI	27297	1,2	13937	90	13	12676	427	16	22	116
VALCEA	35678	1,6	15696	364	6	18816	513	42	65	176
VRANCEA	27439	1,2	9954	357	10	16479	471	17	35	116
MUN. BUCURESTI	406251	18,3	43044	1039	323	354088	7420	116	64	157
ILFOV	45282	2,0	6836	50	35	37496	715	21	31	98

Table no. 6

**Operations performed in the trade registers by counties and categories of registration in the month of December 2011**

County	Total of operations carried on		out of which:					
			New incorporations		Changes in statutory documents		Strike off companies	
	No.	%	No.	%	No.	%	No.	%
0	1	2	3	4	5	6	9	10
<b>Total ROMÂNIA</b>	<b>52604</b>	<b>100,0</b>	<b>7659</b>	<b>14,6</b>	<b>37990</b>	<b>72,2</b>	<b>6955</b>	<b>13,2</b>
ALBA	547	100,0	105	19,2	365	66,7	77	14,1
ARAD	1248	100,0	151	12,1	827	66,3	270	21,6
ARGES	1251	100,0	239	19,1	888	71,0	124	9,9
BACAU	1105	100,0	148	13,4	790	71,5	167	15,1
BIHOR	1318	100,0	219	16,6	917	69,6	182	13,8
BISTRITA-NASAUD	692	100,0	127	18,4	414	59,8	151	21,8
BOTOSANI	429	100,0	67	15,6	267	62,2	95	22,1
BRASOV	1596	100,0	270	16,9	1058	66,3	268	16,8
BRAILA	675	100,0	106	15,7	422	62,5	147	21,8
BUZAU	1048	100,0	144	13,7	806	76,9	98	9,4
CARAS-SEVERIN	552	100,0	84	15,2	430	77,9	38	6,9
CALARASI	507	100,0	50	9,9	373	73,6	84	16,6
CLUJ	2171	100,0	376	17,3	1378	63,5	417	19,2
CONSTANTA	2413	100,0	315	13,1	1927	79,9	171	7,1
COVASNA	380	100,0	56	14,7	287	75,5	37	9,7
DAMBOVITA	766	100,0	141	18,4	425	55,5	200	26,1
DOLJ	1236	100,0	245	19,8	851	68,9	140	11,3
GALATI	1359	100,0	192	14,1	1034	76,1	133	9,8
GIURGIU	392	100,0	83	21,2	284	72,4	25	6,4
GORJ	664	100,0	89	13,4	493	74,2	82	12,3
HARGHITA	802	100,0	103	12,8	578	72,1	121	15,1
HUNEDOARA	1007	100,0	133	13,2	786	78,1	88	8,7
IALOMITA	544	100,0	71	13,1	438	80,5	35	6,4
IASI	2212	100,0	296	13,4	1497	67,7	419	18,9
MARAMURES	915	100,0	152	16,6	675	73,8	88	9,6
MEHEDINTI	320	100,0	81	25,3	190	59,4	49	15,3
MURES	1443	100,0	155	10,7	983	68,1	305	21,1
NEAMT	971	100,0	115	11,8	757	78,0	99	10,2
OLT	469	100,0	102	21,7	336	71,6	31	6,6
PRAHOVA	1833	100,0	264	14,4	1221	66,6	348	19,0
SALAJ	607	100,0	55	9,1	436	71,8	116	19,1
SATU MARE	724	100,0	78	10,8	515	71,1	131	18,1
SIBIU	1184	100,0	140	11,8	861	72,7	183	15,5
SUCEAVA	870	100,0	139	16,0	595	68,4	136	15,6
TELEORMAN	331	100,0	89	26,9	206	62,2	36	10,9
TIMIS	1856	100,0	320	17,2	1343	72,4	193	10,4
TULCEA	472	100,0	63	13,3	362	76,7	47	10,0
VASLUI	521	100,0	77	14,8	390	74,9	54	10,4
VALCEA	790	100,0	108	13,7	596	75,4	86	10,9
VRANCEA	557	100,0	73	13,1	386	69,3	98	17,6
MUN. BUCURESTI	11111	100,0	1516	13,6	8307	74,8	1288	11,6
ILFOV	2716	100,0	322	11,9	2296	84,5	98	3,6

\*) by effect of implementation of Law no. 314/2001, art.1 and art. 6

Table no.7

**Number of incorporations in the trade registers by counties and business categories in the month of December 2011**

County	Total		out of which:							APJ
			PF	companies: 4420				RA	SC	
	SNC	SCS		SRL	SA					
	No.	%	No.	No.	No.	No.	No.	No.		
0	1	2	3	4	5	6	7	8	9	
<b>Total ROMÂNIA</b>	<b>7659</b>	<b>100,0</b>	<b>3220</b>			<b>4385</b>	<b>35</b>		<b>8</b>	<b>11</b>
ALBA	105	1,4	64			40	1			
ARAD	151	2,0	60			91				
ARGES	239	3,1	124			115				
BACAU	148	1,9	77			68			3	
BIHOR	219	2,9	89			128				2
BISTRITA-NASAUD	127	1,7	85			41				1
BOTOSANI	67	0,9	36			31				
BRASOV	270	3,5	100			166	2			2
BRAILA	106	1,4	66			40				
BUZAU	144	1,9	66			78				
CARAS-SEVERIN	84	1,1	41			42				1
CALARASI	50	0,7	26			22	2			
CLUJ	376	4,9	139			234	2			1
CONSTANTA	315	4,1	107			207	1			
COVASNA	56	0,7	31			24			1	
DAMBOVITA	141	1,8	91			50				
DOLJ	245	3,2	129			116				
GALATI	192	2,5	89			102	1			
GIURGIU	83	1,1	30			53				
GORJ	89	1,2	57			32				
HARGHITA	103	1,3	64			38	1			
HUNEDOARA	133	1,7	64			69				
IALOMITA	71	0,9	36			35				
IASI	296	3,9	154			139	1		2	
MARAMURES	152	2,0	89			62	1			
MEHEDINTI	81	1,1	52			29				
MURES	155	2,0	73			82				
NEAMT	115	1,5	61			54				
OLT	102	1,3	54			48				
PRAHOVA	264	3,4	139			124				1
SALAJ	55	0,7	27			27	1			
SATU MARE	78	1,0	29			49				
SIBIU	140	1,8	62			76			1	1
SUCEAVA	139	1,8	65			73	1			
TELEORMAN	89	1,2	37			52				
TIMIS	320	4,2	118			202				
TULCEA	63	0,8	33			29			1	
VASLUI	77	1,0	46			31				
VALCEA	108	1,4	74			33				1
VRANCEA	73	1,0	34			37	1			1
MUN. BUCURESTI	1516	19,8	345			1153	18			
ILFOV	322	4,2	57			263	2			

Table no.8

**Number of incorporations in the trade registers by counties and capital sources in the month of December 2011**

County	Total		out of which:						Rnking by: *	
			Private capital			State majority capital		Mixed capital (state+private)		
			out of which:			out of which:				
			PF	Companies	SC	APJ	RA	Companies		Companies
			No.	No.	No.		No.	No.		No.
0	1	2	3	4	5	6	7	8	9	
<b>Total ROMÂNIA</b>	<b>7659</b>	<b>100,0</b>	<b>3220</b>	<b>4420</b>	<b>8</b>	<b>11</b>				<b>X</b>
ALBA	105	1,4	64	41						26
ARAD	151	2,0	60	91						15
ARGES	239	3,1	124	115						10
BACAU	148	1,9	77	68	3					16
BIHOR	219	2,9	89	128		2				11
BISTRITA-NASAUD	127	1,7	85	41		1				22
BOTOSANI	67	0,9	36	31						38
BRASOV	270	3,5	100	168		2				7
BRAILA	106	1,4	66	40						25
BUZAU	144	1,9	66	78						17
CARAS-SEVERIN	84	1,1	41	42		1				31
CALARASI	50	0,7	26	24						42
CLUJ	376	4,9	139	236		1				2
CONSTANTA	315	4,1	107	208						5
COVASNA	56	0,7	31	24	1					40
DAMBOVITA	141	1,8	91	50						18
DOLJ	245	3,2	129	116						9
GALATI	192	2,5	89	103						12
GIURGIU	83	1,1	30	53						32
GORJ	89	1,2	57	32						29
HARGHITA	103	1,3	64	39						27
HUNEDOARA	133	1,7	64	69						21
IALOMITA	71	0,9	36	35						37
IASI	296	3,9	154	140	2					6
MARAMURES	152	2,0	89	63						14
MEHEDINTI	81	1,1	52	29						33
MURES	155	2,0	73	82						13
NEAMT	115	1,5	61	54						23
OLT	102	1,3	54	48						28
PRAHOVA	264	3,4	139	124		1				8
SALAJ	55	0,7	27	28						41
SATU MARE	78	1,0	29	49						34
SIBIU	140	1,8	62	76	1	1				19
SUCEAVA	139	1,8	65	74						20
TELEORMAN	89	1,2	37	52						30
TIMIS	320	4,2	118	202						4
TULCEA	63	0,8	33	29	1					39
VASLUI	77	1,0	46	31						35
VALCEA	108	1,4	74	33		1				24
VRANCEA	73	1,0	34	38		1				36
MUN. BUCURESTI	1516	19,8	345	1171						1
ILFOV	322	4,2	57	265						3

\*) The total number of incorporations (col 1)

\*\*\* Less than 0,01%





Table no. 10

**Number of incorporated trading companies and the value of the subscribed share capital, by counties, in the month of December 2011**

County	Total registered companies		Subscribed capital		Average subscribed capital on company
	No.	%	thousant Lei	%	thousant Lei
0	1	2	3	4	5
<b>Total ROMÂNIA</b>	<b>4420</b>	<b>100,0</b>	<b>128892,1</b>	<b>100,0</b>	<b>29,2</b>
ALBA	41	0,9	902,4	0,7	220,1
ARAD	91	2,1	1892,9	1,5	208,0
ARGES	115	2,6	63,5	0,0	5,5
BACAU	68	1,5	34,1	0,0	5,0
BIHOR	128	2,9	85,3	0,1	6,7
BISTRITA-NASAUD	41	0,9	21,4	0,0	5,2
BOTOSANI	31	0,7	7,1	***	2,3
BRASOV	168	3,8	255,1	0,2	15,2
BRAILA	40	0,9	1040,8	0,8	260,2
BUZAU	78	1,8	69,7	0,1	8,9
CARAS-SEVERIN	42	1,0	15,9	0,0	3,8
CALARASI	24	0,5	100,0	0,1	41,7
CLUJ	236	5,3	300,0	0,2	12,7
CONSTANTA	208	4,7	176,0	0,1	8,5
COVASNA	24	0,5	10,2	***	4,2
DAMBOVITA	50	1,1	4184,2	3,2	836,8
DOLJ	116	2,6	37,6	0,0	3,2
GALATI	103	2,3	266,7	0,2	25,9
GIURGIU	53	1,2	286,1	0,2	54,0
GORJ	32	0,7	21,8	0,0	6,8
HARGHITA	39	0,9	598,8	0,5	153,5
HUNEDOARA	69	1,6	22,1	0,0	3,2
IALOMITA	35	0,8	9,0	***	2,6
IASI	140	3,2	776,8	0,6	55,5
MARAMURES	63	1,4	224,3	0,2	35,6
MEHEDINTI	29	0,7	8,5	***	2,9
MURES	82	1,9	190,0	0,1	23,2
NEAMT	54	1,2	292,2	0,2	54,1
OLT	48	1,1	20,6	0,0	4,3
PRAHOVA	124	2,8	128,1	0,1	10,3
SALAJ	28	0,6	6,4	***	2,3
SATU MARE	49	1,1	18,1	0,0	3,7
SIBIU	76	1,7	1114,6	0,9	146,7
SUCEAVA	74	1,7	1286,2	1,0	173,8
TELEORMAN	52	1,2	12,4	***	2,4
TIMIS	202	4,6	874,4	0,7	43,3
TULCEA	29	0,7	15,2	0,0	5,2
VASLUI	31	0,7	55,7	0,0	18,0
VALCEA	33	0,7	339,1	0,3	102,8
VRANCEA	38	0,9	22,8	0,0	6,0
MUN. BUCURESTI	1171	26,5	59175,7	45,9	505,3
ILFOV	265	6,0	53930,3	41,8	2035,1

*Note: The average does not include filials because according to the Law no. 31/1990 they are not juridical persons*

\*\*\* Less than 0,01%

Table no. 11

**Number of incorporated trading companies and the value of the subscribed share capital by legal forms, in the month of December 2011**

Company type	Total registered companies		Subscribed capital		Average subscribed capital on company
	No.	%	thousand Lei	%	thousand Lei
0	1	2	3	4	5
<b>Total ROMÂNIA</b>	<b>4420</b>	<b>100,0</b>	<b>128892,1</b>	<b>100,0</b>	<b>2916,1</b>
<b>SNC</b>					
<b>SCS</b>					
<b>SA</b>	35	0,8	89520,8	69,5	2557,7
<b>SRL</b>	4385	99,2	39371,3	30,5	9,0

*Note: The average does not include filials because according to the Law no.31/1990 they are not juridical persons*

\*\*\* Less than 0,01%

Diagram no.5

