



MINISTRY OF JUSTICE

THE NATIONAL TRADE REGISTER OFFICE

București, Bd. Unirii nr. 74, Bl. J3b, tronson II+III, sector 3; Telefon: +40 21 316.08.04, 316.08.10; Fax: +40 21 316.08.03; Cod poștal: 030837
Website: www.onrc.ro; E-mail: onrc@onrc.ro; Cod identificare Fiscală: 14942091

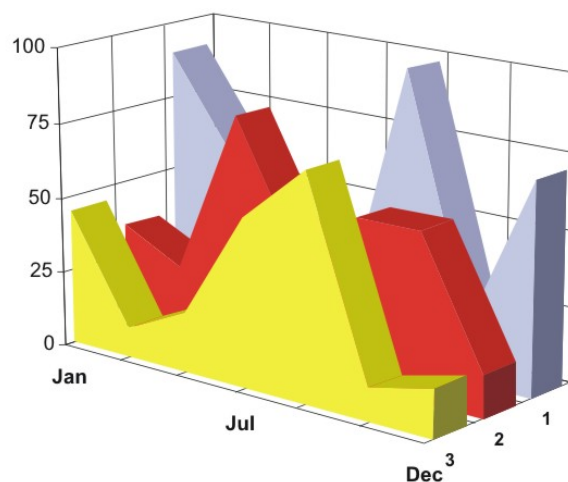
OPERATIONS IN THE CENTRAL TRADE REGISTER

STATISTIC SYNTHESIS

OF

RECORDS IN THE CENTRAL TRADE REGISTER

- 30th November 2011 - provisional data -



- ISSUE No. 240 -

MINISTRY OF JUSTICE

THE NATIONAL TRADE REGISTER OFFICE

- Operations such as incorporation of trading companies, submission of changes, and strike-off are carried out based on Law No.26/1990, as republished, Law No.31/1990, as republished and on the Methodological Norms no. P/608/1998.
- This work reflects the evolution of the operations with the Trade Register Office attached to Bucharest Law Court and the Trade Register Offices attached to County Law Courts.
- The data contained in the Central Trade Register refer to operations for which law sets out the obligation of being registered in the trade registers kept by the 42 trade register offices attached to law courts.

• The content of this publication shall not be reproduced, partly or entirely, in original or modified form, and shall not be stored in a recovery system and shall not be transmitted in any form or by any means without prior written authorization of the Ministry of Justice – The National Trade Register Office.

• The content of this publication December be used in articles, studies, books, as supporting or explanatory data only by clearly and accurately indicating the source.

CONTENTS

Page

1	Definitions	1
2.1	Data related to the period December 1990 – November 2011	3
	Table no. 1 – Operations performed in the trade registers by categories of registration during December 1990 –November 2011, total by country and by counties, shares of counties in the total by country	3
	Table no. 2 – Operations performed in the trade registers by categories of registration during 1990 –November 2011, total by country and counties, share of categories of operations in the total of each county	4
	Table no. 3 – Number and structure of incorporations in the trade registers during 1990-November 2011	5
	Chart no. 1 – Structure by years of incorporations in the trade register	
	Table no. 4 – Number of incorporations in the trade registers by counties and capital sources during 1990 - November 2011	6
	Table no. 5 – Number of incorporations in the trade registers by counties and business categories during 1990 –November 2011	7
2.2	Data related to November 2011	8
	Table no. 6 – Operations performed in the trade registers by counties and categories of registrations in the month of November 2011	8
	Table no. 7 – Number of incorporations in the trade registers by counties and capital sources in the month of November 2011	9
	Table no. 8 – Number of incorporations in the trade registers by counties and business categories in the month of November 2011	10
	Table no. 9 –Number of incorporations in the trade registers by domains of activity and business categories in the month of November 2011	11-12
	Table no. 10 – Number of incorporated trading companies and the value of subscribed share capital, by counties, in the month of November 2011	13
	Table no. 11– Number of incorporated trading companies and the value of subscribed share capital by legal forms, in the month of November 2011	14
	Chart no. 5 – Average value of subscribed share capital by types of trading companies in the month of November 2011	14

Definitions

The Trade Register Office was established based on Law No. 26/1990, as republished and subsequently amended and supplemented, operates as an active institution since 1990 and is twofold structured:

- at national level, represented by the National Trade Register Office organized under the authority of the Ministry of Justice
- at local level, represented by the 42 Trade Register Offices attached to Law Courts, organized under the subordination of the National Trade Register Office

Categories of persons liable to registration in the trade register:

- natural persons: authorized natural persons, individual enterprises and family enterprises currently carrying on trading activities;

- legal persons represented by: Trading Companies, National Societies and Companies, National R&D Institutes, Autonomous Administrations, Co-operative Societies, Agricultural Co-operatives, Co-operative Organizations, Economic Interest Groupings, European Economic Interest Groupings, European Societies, European Co-operative Societies, branches of trading companies with legal establishment, operation and incorporation regime of trading company legal form under which they were incorporated.

- **Terms used in tables and charts**

- **Number of companies**, depending on the table, represents the number of trading companies incorporated during the reference period, the number of trading companies struck-off from the trade register. The following forms of organization are included: limited liability companies, joint-stock companies, limited partnerships by share, limited partnerships, general partnerships, and branches thereof.

- **Value of subscribed share capital:**

- **total, expressed in national currency:** the share capital value resulted by adding up the subscribed values (in cash and in kind) in national currency (lei)

- **Regions of economic development:**

<i>North-East:</i>	Suceava, Botoșani, Neamț, Iași, Bacău, Vaslui.
<i>South-East:</i>	Vrancea, Galați, Buzău, Brăila, Tulcea, Constanța.
<i>South-Muntenia:</i>	Argeș, Dâmbovița, Prahova, Teleorman, Giurgiu, Călărași, Ialomița.
<i>South-West Oltenia:</i>	Gorj, Vâlcea, Dolj, Mehedinți, Olt.
<i>West:</i>	Arad, Caraș-Severin, Hunedoara, Timiș.
<i>North-West:</i>	Bihor, Bistrița, Cluj, Satu Mare, Sălaj, Maramureș.
<i>Center:</i>	Alba, Brașov, Covasna, Harghita, Mureș, Sibiu.
<i>Bucharest-</i>	București, Ilfov.

Ifov:

NACE Code – The classification of economic activities in the national economy was approved by GO No. 656/1997, amended by Order No 601/2002 and Order no. 337/2007 of the President of the National Institute of Statistics, and complies with the international classification used in statistic reports and official documents. The activities are ranked by the harmonization principle, by sections, divisions, groups and classes.

Abbreviations

- **PF** - Natural Person; the following forms of organization are included in this category: natural persons and family associations registered until 25.04.2008, authorized natural persons, individual enterprises and family enterprises.
- **SNC** - General Partnership
- **SCS** - Limited Partnership
- **SCA** - Limited Partnership by Share
- **SA** - Joint-Stock Company
- **SRL** - Limited Liability Company
- **RA** - Autonomous Administration
- **APJ** - Other legal persons having the obligation to register in the trade register: National R&D Institutes, Economic Interest Groupings, European Economic Interest Groupings, European Societies, European Co-operative Societies, Agricultural Co-operatives, Co-operative Organizations.

Sources of Information:

The integrated IT system of the trade register is designed by The National Trade Register Office in compliance with the provisions of the related legislation in force. The source of information consists of the trade registers organized in computerized system, kept by the trade register offices attached to law courts.

Table no. 1

**Operations performed in the trade registers by categories of registration during
December 1990 – November 2011, total by country and by counties, share of
counties in the total by country**

Counties	Total of registered operations		out of which :					
			Registered companies		Changes in statutory documents		Strike off companies	
	No.	%	No.	%	No.	%	No.	%
0	1	2	3	4	7	8	9	10
Total ROMÂNIA	15278621	100,0	2211827	100,0	12192809	100,0	873985	100,0
ALBA	231376	1,5	38367	1,7	180602	1,5	12407	1,4
ARAD	360404	2,4	53772	2,4	284454	2,3	22178	2,5
ARGES	369080	2,4	57051	2,6	294582	2,4	17447	2,0
BACAU	353123	2,3	54959	2,5	274211	2,2	23953	2,7
BIHOR	462205	3,0	69138	3,1	369250	3,0	23817	2,7
BISTRITA-NASAUD	186453	1,2	29269	1,3	146134	1,2	11050	1,3
BOTOSANI	143768	0,9	27209	1,2	104913	0,9	11646	1,3
BRASOV	588557	3,9	67799	3,1	496886	4,1	23872	2,7
BRAILA	231939	1,5	31003	1,4	191391	1,6	9545	1,1
BUZAU	265124	1,7	39565	1,8	207995	1,7	17564	2,0
CARAS-SEVERIN	175621	1,1	26749	1,2	136183	1,1	12689	1,5
CALARASI	139043	0,9	22281	1,0	107185	0,9	9577	1,1
CLUJ	674234	4,4	101505	4,6	539073	4,4	33656	3,9
CONSTANTA	657781	4,3	90673	4,1	528866	4,3	38242	4,4
COVASNA	130663	0,9	18839	0,9	104145	0,9	7679	0,9
DAMBOVITA	219403	1,4	41825	1,9	157918	1,3	19660	2,2
DOLJ	416553	2,7	59057	2,7	333815	2,7	23681	2,7
GALATI	388376	2,5	52641	2,4	313446	2,6	22289	2,6
GIURGIU	122279	0,8	18838	0,9	95735	0,8	7706	0,9
GORJ	230247	1,5	26360	1,2	193446	1,6	10441	1,2
HARGHITA	227730	1,5	34378	1,6	181710	1,5	11642	1,3
HUNEDOARA	306249	2,0	45132	2,0	242283	2,0	18834	2,2
IALOMITA	139781	0,9	20435	0,9	109230	0,9	10116	1,2
IASI	508805	3,3	74136	3,4	408304	3,3	26365	3,0
MARAMURES	325324	2,1	55712	2,5	245377	2,0	24235	2,8
MEHEDINTI	155327	1,0	24986	1,1	119347	1,0	10994	1,3
MURES	418452	2,7	54596	2,5	341290	2,8	22566	2,6
NEAMT	321488	2,1	46579	2,1	253759	2,1	21150	2,4
OLT	181631	1,2	30879	1,4	137578	1,1	13174	1,5
PRAHOVA	513086	3,4	73230	3,3	410229	3,4	29627	3,4
SALAJ	138104	0,9	22593	1,0	106286	0,9	9225	1,1
SATU MARE	239640	1,6	37732	1,7	185524	1,5	16384	1,9
SIBIU	333098	2,2	43495	2,0	272976	2,2	16627	1,9
SUCEAVA	358953	2,3	54629	2,5	278073	2,3	26251	3,0
TELEORMAN	162722	1,1	25917	1,2	127252	1,0	9553	1,1
TIMIS	512848	3,4	78246	3,5	407776	3,3	26826	3,1
TULCEA	179005	1,2	22403	1,0	146632	1,2	9970	1,1
VASLUI	188652	1,2	27220	1,2	147971	1,2	13461	1,5
VALCEA	233839	1,5	35570	1,6	181920	1,5	16349	1,9
VRANCEA	186579	1,2	27366	1,2	150290	1,2	8923	1,0
MUN. BUCURESTI	3041195	19,9	404733	18,3	2475563	20,3	160899	18,4
ILFOV	259884	1,7	44960	2,0	203209	1,7	11715	1,3

*** Less 0,01%

Table no. 2

Operations performed in the trade registers during December 1990 – November 2011,
total by country and counties, share of categories of operations in the total of each
county

Counties	Total of registered operations		out of which :					
			Registered companies		Changes in statutory documents		Strike off companies	
	No.	%	No.	%	No.	%	No.	%
0	1	2	3	4	7	8	11	12
Total ROMANIA	15278621	100,0	2211827	14,5	12192809	79,8	873985	5,7
ALBA	231376	100,0	38367	16,6	180602	78,1	12407	5,4
ARAD	360404	100,0	53772	14,9	284454	78,9	22178	6,2
ARGES	369080	100,0	57051	15,5	294582	79,8	17447	4,7
BACAU	353123	100,0	54959	15,6	274211	77,7	23953	6,8
BIHOR	462205	100,0	69138	15,0	369250	79,9	23817	5,2
BISTRITA-NASAUD	186453	100,0	29269	15,7	146134	78,4	11050	5,9
BOTOSANI	143768	100,0	27209	18,9	104913	73,0	11646	8,1
BRASOV	588557	100,0	67799	11,5	496886	84,4	23872	4,1
BRAILA	231939	100,0	31003	13,4	191391	82,5	9545	4,1
BUZAU	265124	100,0	39565	14,9	207995	78,5	17564	6,6
CARAS-SEVERIN	175621	100,0	26749	15,2	136183	77,5	12689	7,2
CALARASI	139043	100,0	22281	16,0	107185	77,1	9577	6,9
CLUJ	674234	100,0	101505	15,1	539073	80,0	33656	5,0
CONSTANTA	657781	100,0	90673	13,8	528866	80,4	38242	5,8
COVASNA	130663	100,0	18839	14,4	104145	79,7	7679	5,9
DAMBOVITA	219403	100,0	41825	19,1	157918	72,0	19660	9,0
DOLJ	416553	100,0	59057	14,2	333815	80,1	23681	5,7
GALATI	388376	100,0	52641	13,6	313446	80,7	22289	5,7
GIURGIU	122279	100,0	18838	15,4	95735	78,3	7706	6,3
GORJ	230247	100,0	26360	11,4	193446	84,0	10441	4,5
HARGHITA	227730	100,0	34378	15,1	181710	79,8	11642	5,1
HUNEDOARA	306249	100,0	45132	14,7	242283	79,1	18834	6,1
IALOMITA	139781	100,0	20435	14,6	109230	78,1	10116	7,2
IASI	508805	100,0	74136	14,6	408304	80,2	26365	5,2
MARAMURES	325324	100,0	55712	17,1	245377	75,4	24235	7,4
MEHEDINTI	155327	100,0	24986	16,1	119347	76,8	10994	7,1
MURES	418452	100,0	54596	13,0	341290	81,6	22566	5,4
NEAMT	321488	100,0	46579	14,5	253759	78,9	21150	6,6
OLT	181631	100,0	30879	17,0	137578	75,7	13174	7,3
PRAHOVA	513086	100,0	73230	14,3	410229	80,0	29627	5,8
SALAJ	138104	100,0	22593	16,4	106286	77,0	9225	6,7
SATU MARE	239640	100,0	37732	15,7	185524	77,4	16384	6,8
SIBIU	333098	100,0	43495	13,1	272976	82,0	16627	5,0
SUCEAVA	358953	100,0	54629	15,2	278073	77,5	26251	7,3
TELEORMAN	162722	100,0	25917	15,9	127252	78,2	9553	5,9
TIMIS	512848	100,0	78246	15,3	407776	79,5	26826	5,2
TULCEA	179005	100,0	22403	12,5	146632	81,9	9970	5,6
VASLUI	188652	100,0	27220	14,4	147971	78,4	13461	7,1
VALCEA	233839	100,0	35570	15,2	181920	77,8	16349	7,0
VRANCEA	186579	100,0	27366	14,7	150290	80,6	8923	4,8
MUN. BUCURESTI	3041195	100,0	404733	13,3	2475563	81,4	160899	5,3
ILFOV	259884	100,0	44960	17,3	203209	78,2	11715	4,5

Table no.3

Number and structure of incorporations in the trade registers during December 1990 - November 2011

Period (year, month)	Registered companies		Percentage	
	No.	%	%	
0	1	2	3	
Total, 30 November 2011, out of which	2211827	100,0		
Period 1990 - 2000	849469	38,9		
Year 2001	61265	2,8		
Year 2002	84780	3,8		
Year 2003	123582	5,6		
Year 2004	144284	6,5		
Year 2005	159464	7,2		
Year 2006	135371	6,1		
Year 2007	144728	6,5		
Year 2008	144173	6,5		
Year 2009	116031	5,2		
Year 2010	122831	5,6		
Year 2011 (I - XII) out of which :	125849	4,9	100,0	
January	7783		6,2	
February	10877		8,6	
March	14482		11,5	
April	10436		8,3	
May	13114		10,4	
June	15750		12,5	
July	16462		13,1	
August	9012		7,2	
September	9209		7,3	
October	9009		7,2	
November	9715		7,7	

Note: Column 2 reveals the annual structure of incorporations; column 3 reveals the structure by months during the current year.

Diagram no.1

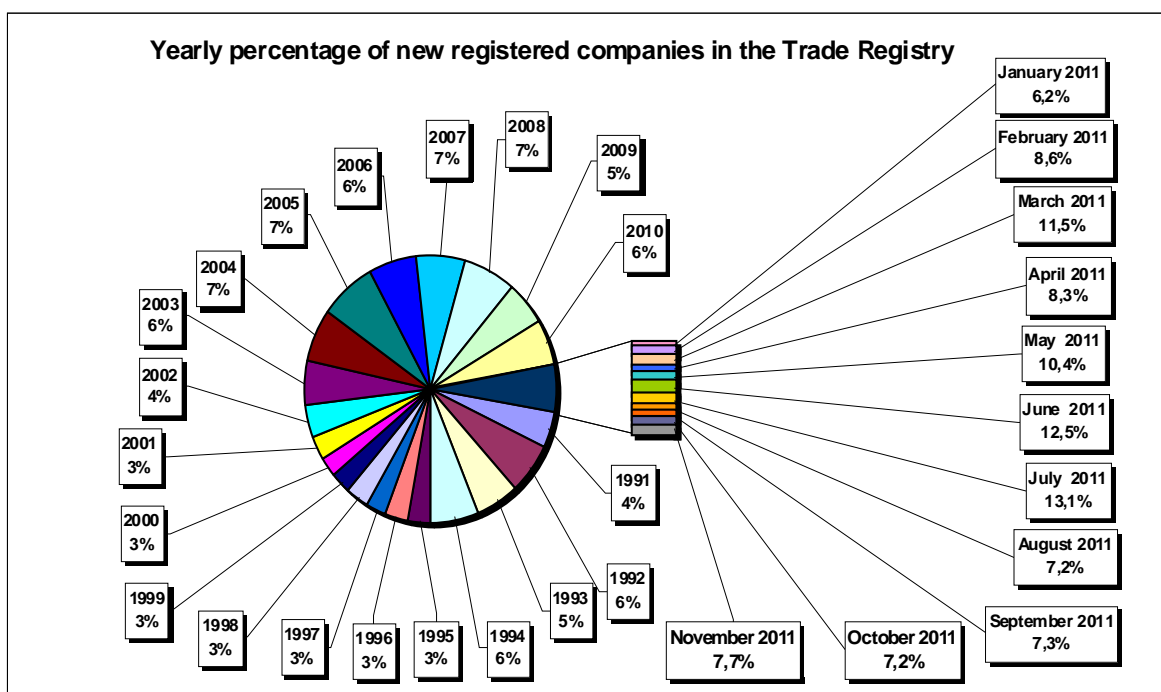


Table no. 4

**Number of incorporations in the trade registers by counties and capital sources during
December 1990 - November 2011**

Counties	Total		out of which:						Ranking by: *	
			Private capital				State majority capital			Mixed capital (state+private)
			out of which:				out of which:			
			PF	Companies	SC	APJ	RA	Companies		Companies
No.	%	No.	No.	No.	No.	No.	No.			
0	1	2	3	4	5	6	6	7	8	9
Total ROMÂNIA	2211827	100,0	676482	1515027	2041	5791	1395	2421	8677	X
ALBA	38367	1,7	16773	21153	36	150	38	47	170	23
ARAD	53773	2,4	21898	31236	60	171	30	43	336	15
ARGES	57050	2,6	20421	36188	48	177	31	32	153	10
BACAU	54959	2,5	20680	33660	151	162	35	46	226	12
BIHOR	69138	3,1	21228	47281	63	155	40	62	309	7
BISTRITA-NASAUD	29269	1,3	12735	16220	46	101	29	29	109	29
BOTOSANI	27209	1,2	13752	12916	40	185	21	176	119	32
BRASOV	67833	3,1	17526	49812	60	127	49	87	172	8
BRAILA	30969	1,4	10079	20503	42	102	30	46	167	27
BUZAU	39565	1,8	13109	26054	46	155	28	42	131	22
CARAS-SEVERIN	26749	1,2	10178	16179	42	108	39	65	138	33
CALARASI	22281	1,0	7771	14200	22	93	18	77	100	39
CLUJ	101505	4,6	30020	70902	62	162	52	43	264	2
CONSTANTA	90673	4,1	20966	68762	87	212	51	52	543	3
COVASNA	18839	0,9	7778	10783	41	72	24	32	109	42
DAMBOVITA	41825	1,9	20592	20799	32	141	30	75	156	21
DOLJ	59057	2,7	15692	42852	39	172	40	58	204	9
GALATI	52641	2,4	14302	37940	35	140	30	51	143	16
GIURGIU	18839	0,9	5072	13423	15	85	23	110	111	41
GORJ	26359	1,2	8192	17723	26	184	51	83	100	34
HARGHITA	34378	1,6	16041	17877	64	97	24	43	232	26
HUNEDOARA	45132	2,0	14282	30307	33	85	42	96	287	18
IALOMITA	20435	0,9	8303	11870	27	83	15	46	91	40
IASI	74136	3,4	25989	47435	87	171	34	78	344	5
MARAMURES	55712	2,5	24400	30938	43	129	38	41	124	11
MEHEDINTI	24986	1,1	9899	14834	19	89	19	27	99	36
MURES	54596	2,5	22273	31861	68	161	30	34	169	14
NEAMT	46579	2,1	18708	27411	66	168	30	30	166	17
OLT	30879	1,4	12926	17547	27	166	26	64	123	28
PRAHOVA	73230	3,3	25489	47092	67	184	52	74	272	6
SALAJ	22593	1,0	10082	12248	41	111	19	28	64	37
SATU MARE	37732	1,7	14310	23080	41	104	21	42	135	24
SIBIU	43495	2,0	13603	29428	37	121	35	110	161	20
SUCEAVA	54629	2,5	27171	26847	73	219	31	67	221	13
TELEORMAN	25917	1,2	10190	15277	33	166	21	46	184	35
TIMIS	78246	3,5	16366	61198	69	155	38	69	351	4
TULCEA	22403	1,0	8777	13250	36	67	19	42	212	38
VASLUI	27220	1,2	13891	12998	22	116	16	41	136	31
VALCEA	35570	1,6	15622	19511	65	175	42	40	115	25
VRANCEA	27366	1,2	9920	17137	35	115	17	28	114	30
MUN. BUCURESTI	404733	18,3	42697	360451	64	157	116	106	1143	1
ILFOV	44960	2,0	6779	37844	31	98	21	13	174	19

*) The total number of incorporations (col 1)

Table no. 5

**Number of incorporations in the trade registers by counties and business categories
during December 1990 – November 2011**

County	Total		out of which:							
			PF	companies: 1526125				RA	SC	APJ
	SNC	SCS		SRL	SA					
	No.	%	No.	No.	No.	No.	No.	No.	No.	
0	1	2	3	4	5	6	7	8	9	10
Total ROMANIA	2211827	100,0	676482	32683	1631	1457528	34276	1395	2041	5791
ALBA	38367	1,7	16773	890	11	19892	577	38	36	150
ARAD	53772	2,4	21898	54	13	30829	717	30	60	171
ARGES	57051	2,6	20421	107	15	35406	846	31	48	177
BACAU	54959	2,5	20680	1299	4	31865	763	35	151	162
BIHOR	69138	3,1	21228	127	48	46538	939	40	63	155
BISTRITA-NASAUD	29269	1,3	12735	146	26	15750	436	29	46	101
BOTOSANI	27209	1,2	13752	468	1	12279	463	21	40	185
BRASOV	67799	3,1	17526	239	21	48870	907	49	60	127
BRAILA	31003	1,4	10079	376	13	19816	545	30	42	102
BUZAU	39565	1,8	13109	3747	46	21837	597	28	46	155
CARAS-SEVERIN	26749	1,2	10178	118	9	15778	477	39	42	108
CALARASI	22281	1,0	7771	609	3	13399	366	18	22	93
CLUJ	101505	4,6	30020	2112	21	67695	1381	52	62	162
CONSTANTA	90673	4,1	20966	311	23	67478	1545	51	87	212
COVASNA	18839	0,9	7778	148	4	10458	314	24	41	72
DAMBOVITA	41825	1,9	20592	60	8	20453	509	30	32	141
DOLJ	59057	2,7	15692	1560	8	40617	929	40	39	172
GALATI	52641	2,4	14302	1574	6	35681	873	30	35	140
GIURGIU	18838	0,9	5072	35	8	13262	338	23	15	85
GORJ	26360	1,2	8192	29	1	17368	509	51	26	184
HARGHITA	34378	1,6	16041	62	7	17578	505	24	64	97
HUNEDOARA	45132	2,0	14282	1166	98	28725	701	42	33	85
IALOMITA	20435	0,9	8303	269	12	11371	355	15	27	83
IASI	74136	3,4	25989	508	112	46183	1052	34	87	171
MARAMURES	55712	2,5	24400	1928	23	28534	617	38	43	129
MEHEDINTI	24986	1,1	9899	427	3	14184	346	19	19	89
MURES	54596	2,5	22273	37	34	31299	694	30	68	161
NEAMT	46579	2,1	18708	3293	30	23597	687	30	66	168
OLT	30879	1,4	12926	1611	1	15616	506	26	27	166
PRAHOVA	73230	3,3	25489	3122	15	43353	948	52	67	184
SALAJ	22593	1,0	10082	600	4	11435	301	19	41	111
SATU MARE	37732	1,7	14310	283	10	22477	486	21	41	104
SIBIU	43495	2,0	13603	778	50	28180	691	35	37	121
SUCEAVA	54629	2,5	27171	438	8	26084	605	31	73	219
TELEORMAN	25917	1,2	10190	272	399	14399	437	21	33	166
TIMIS	78246	3,5	16366	617	35	59663	1303	38	69	155
TULCEA	22403	1,0	8777	1363	114	11541	486	19	36	67
VASLUI	27220	1,2	13891	90	13	12645	427	16	22	116
VALCEA	35570	1,6	15622	364	6	18783	513	42	65	175
VRANCEA	27366	1,2	9920	357	10	16442	470	17	35	115
MUN. BUCURESTI	404733	18,3	42697	1039	323	352935	7402	116	64	157
ILFOV	44960	2,0	6779	50	35	37233	713	21	31	98

Table no. 6

Operations performed in the trade registers by counties and categories of registration in the month of November 2011

County	Total of operations carried on		out of which:					
			New incorporations		Changes in statutory documents		Strike off companies	
	No.	%	No.	%	No.	%	No.	%
0	1	2	3	4	5	6	9	10
Total ROMÂNIA	62182	100,0	9715	15,6	45248	72,8	7219	11,6
ALBA	789	100,0	201	25,5	510	64,6	78	9,9
ARAD	1550	100,0	270	17,4	1025	66,1	255	16,5
ARGES	1399	100,0	285	20,4	995	71,1	119	8,5
BACAU	1310	100,0	203	15,5	1002	76,5	105	8,0
BIHOR	1679	100,0	361	21,5	1147	68,3	171	10,2
BISTRITA-NASAUD	743	100,0	125	16,8	559	75,2	59	7,9
BOTOSANI	711	100,0	134	18,8	453	63,7	124	17,4
BRASOV	2013	100,0	311	15,4	1503	74,7	199	9,9
BRAILA	673	100,0	164	24,4	433	64,3	76	11,3
BUZAU	988	100,0	145	14,7	676	68,4	167	16,9
CARAS-SEVERIN	622	100,0	92	14,8	484	77,8	46	7,4
CALARASI	510	100,0	105	20,6	334	65,5	71	13,9
CLUJ	2474	100,0	461	18,6	1583	64,0	430	17,4
CONSTANTA	2533	100,0	330	13,0	2005	79,2	198	7,8
COVASNA	386	100,0	61	15,8	294	76,2	31	8,0
DAMBOVITA	873	100,0	187	21,4	616	70,6	70	8,0
DOLJ	2240	100,0	300	13,4	1764	78,8	176	7,9
GALATI	1498	100,0	218	14,6	1121	74,8	159	10,6
GIURGIU	470	100,0	99	21,1	337	71,7	34	7,2
GORJ	739	100,0	107	14,5	573	77,5	59	8,0
HARGHITA	782	100,0	125	16,0	589	75,3	68	8,7
HUNEDOARA	1250	100,0	182	14,6	939	75,1	129	10,3
IALOMITA	415	100,0	85	20,5	287	69,2	43	10,4
IASI	2432	100,0	372	15,3	1661	68,3	399	16,4
MARAMURES	1099	100,0	234	21,3	761	69,2	104	9,5
MEHEDINTI	438	100,0	89	20,3	307	70,1	42	9,6
MURES	1680	100,0	206	12,3	1293	77,0	181	10,8
NEAMT	1039	100,0	183	17,6	785	75,6	71	6,8
OLT	521	100,0	99	19,0	380	72,9	42	8,1
PRAHOVA	1917	100,0	321	16,7	1309	68,3	287	15,0
SALAJ	640	100,0	78	12,2	465	72,7	97	15,2
SATU MARE	983	100,0	133	13,5	659	67,0	191	19,4
SIBIU	1375	100,0	191	13,9	1084	78,8	100	7,3
SUCEAVA	1174	100,0	204	17,4	849	72,3	121	10,3
TELEORMAN	460	100,0	84	18,3	318	69,1	58	12,6
TIMIS	2269	100,0	425	18,7	1670	73,6	174	7,7
TULCEA	466	100,0	59	12,7	328	70,4	79	17,0
VASLUI	784	100,0	85	10,8	671	85,6	28	3,6
VALCEA	763	100,0	126	16,5	576	75,5	61	8,0
VRANCEA	656	100,0	99	15,1	443	67,5	114	17,4
MUN. BUCURESTI	14488	100,0	1815	12,5	10596	73,1	2077	14,3
ILFOV	2351	100,0	361	15,4	1864	79,3	126	5,4

*) by effect of implementation of Law no. 314/2001, art.1 and art. 6

Table no.7

Number of incorporations in the trade registers by counties and business categories in the month of November 2011

County	Total		out of which:							APJ
			PF	companies: 5469				RA	SC	
	SNC	SCS		SRL	SA					
	No.	%	No.	No.	No.	No.	No.	No.		
0	1	2	3	4	5	6	7	8	9	
Total ROMÂNIA	9715	100,0	4236		1	5447	21		2	8
ALBA	201	2,1	128			72				1
ARAD	270	2,8	141			129				
ARGES	285	2,9	134			151				
BACAU	203	2,1	93			109	1			
BIHOR	361	3,7	182			178				1
BISTRITA-NASAUD	125	1,3	61			64				
BOTOSANI	134	1,4	96			38				
BRASOV	311	3,2	124			184			2	1
BRAILA	164	1,7	88		1	74	1			
BUZAU	145	1,5	66			78	1			
CARAS-SEVERIN	92	0,9	40			52				
CALARASI	105	1,1	62			43				
CLUJ	461	4,7	206			254	1			
CONSTANTA	330	3,4	106			221	3			
COVASNA	61	0,6	44			17				
DAMBOVITA	187	1,9	102			84	1			
DOLJ	300	3,1	106			193	1			
GALATI	218	2,2	97			121				
GIURGIU	99	1,0	30			69				
GORJ	107	1,1	50			56	1			
HARGHITA	125	1,3	84			41				
HUNEDOARA	182	1,9	102			80				
IALOMITA	85	0,9	44			41				
IASI	372	3,8	192			180				
MARAMURES	234	2,4	132			102				
MEHEDINTI	89	0,9	49			40				
MURES	206	2,1	108			97				1
NEAMT	183	1,9	108			75				
OLT	99	1,0	48			51				
PRAHOVA	321	3,3	173			148				
SALAJ	78	0,8	41			37				
SATU MARE	133	1,4	66			65				2
SIBIU	191	2,0	96			95				
SUCEAVA	204	2,1	116			88				
TELEORMAN	84	0,9	32			51				1
TIMIS	425	4,4	173			251	1			
TULCEA	59	0,6	18			41				
VASLUI	85	0,9	51			34				
VALCEA	126	1,3	79			46				1
VRANCEA	99	1,0	53			46				
MUN. BUCURESTI	1815	18,7	439			1368	8			
ILFOV	361	3,7	76			283	2			

Table no.8

Number of incorporations in the trade registers by counties and capital sources in the month of November 2011

County	Total		out of which:						Rnking by: *	
			Private capital			State majority capital		Mixed capital (state+private)		
			out of which:			out of which:				
			PF	Companies	SC	APJ	RA	Companies		Companies
			No.	No.	No.		No.	No.		No.
0	1	2	3	4	5	6	7	8	9	
Total ROMÂNIA	9715	100,0	4236	5467	2	8		1	1	X
ALBA	201	2,1	128	72		1				18
ARAD	270	2,8	141	129						12
ARGES	285	2,9	134	151						11
BACAU	203	2,1	93	110						17
BIHOR	361	3,7	182	178		1				5
BISTRITA-NASAUD	125	1,3	61	64						28
BOTOSANI	134	1,4	96	38						25
BRASOV	311	3,2	124	184	2	1				9
BRAILA	164	1,7	88	76						23
BUZAU	145	1,5	66	79						24
CARAS-SEVERIN	92	0,9	40	52						35
CALARASI	105	1,1	62	43						31
CLUJ	461	4,7	206	255						2
CONSTANTA	330	3,4	106	223				1		7
COVASNA	61	0,6	44	17						41
DAMBOVITA	187	1,9	102	85						20
DOLJ	300	3,1	106	194						10
GALATI	218	2,2	97	121						14
GIURGIU	99	1,0	30	69						32
GORJ	107	1,1	50	57						30
HARGHITA	125	1,3	84	41						29
HUNEDOARA	182	1,9	102	80						22
IALOMITA	85	0,9	44	41						37
IASI	372	3,8	192	180						4
MARAMURES	234	2,4	132	102						13
MEHEDINTI	89	0,9	49	40						36
MURES	206	2,1	108	97		1				15
NEAMT	183	1,9	108	75						21
OLT	99	1,0	48	51						33
PRAHOVA	321	3,3	173	148						8
SALAJ	78	0,8	41	37						40
SATU MARE	133	1,4	66	65		2				26
SIBIU	191	2,0	96	95						19
SUCEAVA	204	2,1	116	88						16
TELEORMAN	84	0,9	32	51		1				39
TIMIS	425	4,4	173	252						3
TULCEA	59	0,6	18	41						42
VASLUI	85	0,9	51	34						38
VALCEA	126	1,3	79	46		1				27
VRANCEA	99	1,0	53	46						34
MUN. BUCURESTI	1815	18,7	439	1375					1	1
ILFOV	361	3,7	76	285						6

*) The total number of incorporations (col 1)

*** Less than 0,01%

Table no. 10

Number of incorporated trading companies and the value of the subscribed share capital, by counties, in the month of November 2011

County	Total registered companies		Subscribed capital		Average subscribed capital on company
	No.	%	thousant Lei	%	thousant Lei
0	1	2	3	4	5
Total ROMÂNIA	5469	100,0	394 457,4	100,0	7212,6
ALBA	72	1,3	30,3	***	4,2
ARAD	129	2,4	2173,9	0,6	168,5
ARGES	151	2,8	154,1	0,0	10,2
BACAU	110	2,0	90927,0	23,1	8266,1
BIHOR	178	3,3	557,1	0,1	31,3
BISTRITA-NASAUD	64	1,2	2,5	***	0,4
BOTOSANI	38	0,7	8,9	***	2,3
BRASOV	184	3,4	457,4	0,1	24,9
BRAILA	76	1,4	243,3	0,1	32,0
BUZAU	79	1,4	286,1	0,1	36,2
CARAS-SEVERIN	52	1,0	29,9	***	5,8
CALARASI	43	0,8	57,5	0,0	13,4
CLUJ	255	4,7	751,3	0,2	29,5
CONSTANTA	224	4,1	21782,0	5,5	972,4
COVASNA	17	0,3	3,5	***	2,1
DAMBOVITA	85	1,6	12452,4	3,2	1465,0
DOLJ	194	3,5	70440,4	17,9	3630,9
GALATI	121	2,2	141,6	0,0	11,7
GIURGIU	69	1,3	403,5	0,1	58,5
GORJ	57	1,0	201,5	0,1	35,4
HARGHITA	41	0,7	14,7	***	3,6
HUNEDOARA	80	1,5	17,9	***	2,2
IALOMITA	41	0,7	20,6	***	5,0
IASI	180	3,3	141,4	0,0	7,9
MARAMURES	102	1,9	53,6	0,0	5,3
MEHEDINTI	40	0,7	74,4	0,0	18,6
MURES	97	1,8	65,4	0,0	6,7
NEAMT	75	1,4	59,4	0,0	7,9
OLT	51	0,9	11,8	***	2,3
PRAHOVA	148	2,7	16554,6	4,2	1118,6
SALAJ	37	0,7	31921,1	8,1	8627,3
SATU MARE	65	1,2	78,8	0,0	12,1
SIBIU	95	1,7	335,2	0,1	35,3
SUCEAVA	88	1,6	30,1	***	3,4
TELEORMAN	51	0,9	4149,8	1,1	813,7
TIMIS	252	4,6	39246,2	9,9	1557,4
TULCEA	41	0,7	29,0	***	7,1
VASLUI	34	0,6	514,4	0,1	151,3
VALCEA	46	0,8	4484,7	1,1	974,9
VRANCEA	46	0,8	23,8	***	5,2
MUN. BUCURESTI	1376	25,2	63894,4	16,2	464,3
ILFOV	285	5,2	31631,7	8,0	1109,9

Note: The average does not include filials because according to the Law no.31/1990 they are not juridical persons

*** Less than 0,01%

Table no. 11

Number of incorporated trading companies and the value of the subscribed share capital by legal forms, in the month of November 2011

Company type	Total registered companies		Subscribed capital		Average subscribed capital on company
	No.	%	thousand Lei	%	thousand Lei
0	1	2	3	4	5
Total ROMANIA	5469	100,0	394457,4	100,0	7212,6
SNC					
SCS	1	0,0	16,0	***	16,0
SA	21	0,4	276758,2	70,2	13179,0
SRL	5447	99,6	117683,2	29,8	21,6

Note: The average does not include filials because according to the Law no.31/1990 they are not juridical persons

*** Less than 0,01%

Diagram no.5

