



MINISTRY OF JUSTICE

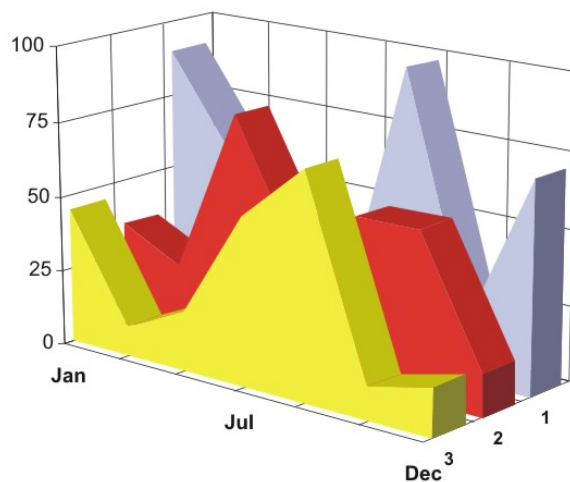
THE NATIONAL TRADE REGISTER OFFICE

București, Bd. Unirii nr. 74, Bl. J3b, tronson II+III, sector 3; Telefon: +40 21 316.08.04, 316.08.10; Fax: +40 21 316.08.03; Cod poștal: 030837
Website: www.onrc.ro; E-mail: onrc@onrc.ro; Cod identificare Fiscală: 14942091

OPERATIONS IN THE CENTRAL TRADE REGISTER

STATISTIC SYNTHESIS

OF RECORDS IN THE CENTRAL TRADE REGISTER - 31th October 2011 - provisional data -



- ISSUE No. 239 -

MINISTRY OF JUSTICE

THE NATIONAL TRADE REGISTER OFFICE

- Operations such as incorporation of trading companies, submission of changes, and strike-off are carried out based on Law No.26/1990, as republished, Law No.31/1990, as republished and on the Methodological Norms no. P/608/1998.
- This work reflects the evolution of the operations with the Trade Register Office attached to Bucharest Law Court and the Trade Register Offices attached to County Law Courts.
- The data contained in the Central Trade Register refer to operations for which law sets out the obligation of being registered in the trade registers kept by the 42 trade register offices attached to law courts.

• The content of this publication shall not be reproduced, partly or entirely, in original or modified form, and shall not be stored in a recovery system and shall not be transmitted in any form or by any means without prior written authorization of the Ministry of Justice – The National Trade Register Office.

• The content of this publication December be used in articles, studies, books, as supporting or explanatory data only by clearly and accurately indicating the source.

CONTENTS

Page

1	Definitions	1
2.1	Data related to the period December 1990 – October 2011	3
	Table no. 1 – Operations performed in the trade registers by categories of registration during December 1990 –October 2011, total by country and by counties, shares of counties in the total by country	3
	Table no. 2 – Operations performed in the trade registers by categories of registration during 1990 –October 2011, total by country and counties, share of categories of operations in the total of each county	4
	Table no. 3 – Number and structure of incorporations in the trade registers during 1990-October 2011	5
	Chart no. 1 – Structure by years of incorporations in the trade register	
	Table no. 4 – Number of incorporations in the trade registers by counties and capital sources during 1990 - October 2011	6
	Table no. 5 – Number of incorporations in the trade registers by counties and business categories during 1990 –October 2011	7
2.2	Data related to October 2011	8
	Table no. 6 – Operations performed in the trade registers by counties and categories of registrations in the month of October 2011	8
	Table no. 7 – Number of incorporations in the trade registers by counties and capital sources in the month of October 2011	9
	Table no. 8 – Number of incorporations in the trade registers by counties and business categories in the month of October 2011	10
	Table no. 9 –Number of incorporations in the trade registers by domains of activity and business categories in the month of October 2011	11-12
	Table no. 10 – Number of incorporated trading companies and the value of subscribed share capital, by counties, in the month of October 2011	13
	Table no. 11– Number of incorporated trading companies and the value of subscribed share capital by legal forms, in the month of October 2011	14
	Chart no. 5 – Average value of subscribed share capital by types of trading companies in the month of October 2011	14

Definitions

The Trade Register Office was established based on Law No. 26/1990, as republished and subsequently amended and supplemented, operates as an active institution since 1990 and is twofold structured:

- at national level, represented by the National Trade Register Office organized under the authority of the Ministry of Justice
- at local level, represented by the 42 Trade Register Offices attached to Law Courts, organized under the subordination of the National Trade Register Office

Categories of persons liable to registration in the trade register:

- natural persons: authorized natural persons, individual enterprises and family enterprises currently carrying on trading activities;

- legal persons represented by: Trading Companies, National Societies and Companies, National R&D Institutes, Autonomous Administrations, Co-operative Societies, Agricultural Co-operatives, Co-operative Organizations, Economic Interest Groupings, European Economic Interest Groupings, European Societies, European Co-operative Societies, branches of trading companies with legal establishment, operation and incorporation regime of trading company legal form under which they were incorporated.

- **Terms used in tables and charts**

- **Number of companies**, depending on the table, represents the number of trading companies incorporated during the reference period, the number of trading companies struck-off from the trade register. The following forms of organization are included: limited liability companies, joint-stock companies, limited partnerships by share, limited partnerships, general partnerships, and branches thereof.

- **Value of subscribed share capital:**

- **total, expressed in national currency:** the share capital value resulted by adding up the subscribed values (in cash and in kind) in national currency (lei)

- **Regions of economic development:**

<i>North-East:</i>	Suceava, Botoșani, Neamț, Iași, Bacău, Vaslui.
<i>South-East:</i>	Vrancea, Galați, Buzău, Brăila, Tulcea, Constanța.
<i>South-Muntenia:</i>	Argeș, Dâmbovița, Prahova, Teleorman, Giurgiu, Călărași, Ialomița.
<i>South-West Oltenia:</i>	Gorj, Vâlcea, Dolj, Mehedinți, Olt.
<i>West:</i>	Arad, Caraș-Severin, Hunedoara, Timiș.
<i>North-West:</i>	Bihor, Bistrița, Cluj, Satu Mare, Sălaj, Maramureș.
<i>Center:</i>	Alba, Brașov, Covasna, Harghita, Mureș, Sibiu.
<i>Bucharest-</i>	București, Ilfov.

Ilfov:

NACE Code – The classification of economic activities in the national economy was approved by GO No. 656/1997, amended by Order No 601/2002 and Order no. 337/2007 of the President of the National Institute of Statistics, and complies with the international classification used in statistic reports and official documents. The activities are ranked by the harmonization principle, by sections, divisions, groups and classes.

Abbreviations

- **PF** - Natural Person; the following forms of organization are included in this category: natural persons and family associations registered until 25.04.2008, authorized natural persons, individual enterprises and family enterprises.
- **SNC** - General Partnership
- **SCS** - Limited Partnership
- **SCA** - Limited Partnership by Share
- **SA** - Joint-Stock Company
- **SRL** - Limited Liability Company
- **RA** - Autonomous Administration
- **APJ** - Other legal persons having the obligation to register in the trade register: National R&D Institutes, Economic Interest Groupings, European Economic Interest Groupings, European Societies, European Co-operative Societies, Agricultural Co-operatives, Co-operative Organizations.

Sources of Information:

The integrated IT system of the trade register is designed by The National Trade Register Office in compliance with the provisions of the related legislation in force. The source of information consists of the trade registers organized in computerized system, kept by the trade register offices attached to law courts.

Table no. 1

**Operations performed in the trade registers by categories of registration during
December 1990 – October 2011, total by country and by counties, share of
counties in the total by country**

Counties	Total of registered operations		out of which :					
			Registered companies		Changes in statutory documents		Strike off companies	
	No.	%	No.	%	No.	%	No.	%
0	1	2	3	4	7	8	9	10
Total ROMÂNIA	15216439	100,0	2202112	100,0	12147561	100,0	866766	100,0
ALBA	230587	1,5	38166	1,7	180092	1,5	12329	1,4
ARAD	358854	2,4	53502	2,4	283429	2,3	21923	2,5
ARGES	367681	2,4	56766	2,6	293587	2,4	17328	2,0
BACAU	351813	2,3	54756	2,5	273209	2,2	23848	2,8
BIHOR	460526	3,0	68777	3,1	368103	3,0	23646	2,7
BISTRITA-NASAUD	185710	1,2	29144	1,3	145575	1,2	10991	1,3
BOTOSANI	143057	0,9	27075	1,2	104460	0,9	11522	1,3
BRASOV	586544	3,9	67488	3,1	495383	4,1	23673	2,7
BRAILA	231266	1,5	30839	1,4	190958	1,6	9469	1,1
BUZAU	264136	1,7	39420	1,8	207319	1,7	17397	2,0
CARAS-SEVERIN	174999	1,2	26657	1,2	135699	1,1	12643	1,5
CALARASI	138533	0,9	22176	1,0	106851	0,9	9506	1,1
CLUJ	671760	4,4	101044	4,6	537490	4,4	33226	3,8
CONSTANTA	655248	4,3	90343	4,1	526861	4,3	38044	4,4
COVASNA	130277	0,9	18778	0,9	103851	0,9	7648	0,9
DAMBOVITA	218530	1,4	41638	1,9	157302	1,3	19590	2,3
DOLJ	414313	2,7	58757	2,7	332051	2,7	23505	2,7
GALATI	386878	2,5	52423	2,4	312325	2,6	22130	2,6
GIURGIU	121809	0,8	18739	0,9	95398	0,8	7672	0,9
GORJ	229508	1,5	26253	1,2	192873	1,6	10382	1,2
HARGHITA	226948	1,5	34253	1,6	181121	1,5	11574	1,3
HUNEDOARA	304999	2,0	44950	2,0	241344	2,0	18705	2,2
IALOMITA	139366	0,9	20350	0,9	108943	0,9	10073	1,2
IASI	506373	3,3	73764	3,3	406643	3,3	25966	3,0
MARAMURES	324225	2,1	55478	2,5	244616	2,0	24131	2,8
MEHEDINTI	154889	1,0	24897	1,1	119040	1,0	10952	1,3
MURES	416772	2,7	54390	2,5	339997	2,8	22385	2,6
NEAMT	320449	2,1	46396	2,1	252974	2,1	21079	2,4
OLT	181110	1,2	30780	1,4	137198	1,1	13132	1,5
PRAHOVA	511169	3,4	72909	3,3	408920	3,4	29340	3,4
SALAJ	137464	0,9	22515	1,0	105821	0,9	9128	1,1
SATU MARE	238657	1,6	37599	1,7	184865	1,5	16193	1,9
SIBIU	331723	2,2	43304	2,0	271892	2,2	16527	1,9
SUCEAVA	357779	2,4	54425	2,5	277224	2,3	26130	3,0
TELEORMAN	162262	1,1	25833	1,2	126934	1,0	9495	1,1
TIMIS	510579	3,4	77821	3,5	406106	3,3	26652	3,1
TULCEA	178539	1,2	22344	1,0	146304	1,2	9891	1,1
VASLUI	187868	1,2	27135	1,2	147300	1,2	13433	1,5
VALCEA	233078	1,5	35446	1,6	181344	1,5	16288	1,9
VRANCEA	185923	1,2	27267	1,2	149847	1,2	8809	1,0
MUN. BUCURESTI	3026705	19,9	402916	18,3	2464967	20,3	158822	18,3
ILFOV	257533	1,7	44599	2,0	201345	1,7	11589	1,3

*** Less 0,01%

Table no. 2

**Operations performed in the trade registers during December 1990 – October 2011,
total by country and counties, share of categories of operations in the total of each
county**

Counties	Total of registered operations		out of which :					
			Registered companies		Changes in statutory documents		Strike off companies	
	No.	%	No.	%	No.	%	No.	%
0	1	2	3	4	7	8	11	12
Total ROMANIA	15216439	100,0	2202112	14,5	12147561	79,8	866766	5,7
ALBA	230587	100,0	38166	16,6	180092	78,1	12329	5,3
ARAD	358854	100,0	53502	14,9	283429	79,0	21923	6,1
ARGES	367681	100,0	56766	15,4	293587	79,8	17328	4,7
BACAU	351813	100,0	54756	15,6	273209	77,7	23848	6,8
BIHOR	460526	100,0	68777	14,9	368103	79,9	23646	5,1
BISTRITA-NASAUD	185710	100,0	29144	15,7	145575	78,4	10991	5,9
BOTOSANI	143057	100,0	27075	18,9	104460	73,0	11522	8,1
BRASOV	586544	100,0	67488	11,5	495383	84,5	23673	4,0
BRAILA	231266	100,0	30839	13,3	190958	82,6	9469	4,1
BUZAU	264136	100,0	39420	14,9	207319	78,5	17397	6,6
CARAS-SEVERIN	174999	100,0	26657	15,2	135699	77,5	12643	7,2
CALARASI	138533	100,0	22176	16,0	106851	77,1	9506	6,9
CLUJ	671760	100,0	101044	15,0	537490	80,0	33226	4,9
CONSTANTA	655248	100,0	90343	13,8	526861	80,4	38044	5,8
COVASNA	130277	100,0	18778	14,4	103851	79,7	7648	5,9
DAMBOVITA	218530	100,0	41638	19,1	157302	72,0	19590	9,0
DOLJ	414313	100,0	58757	14,2	332051	80,1	23505	5,7
GALATI	386878	100,0	52423	13,6	312325	80,7	22130	5,7
GIURGIU	121809	100,0	18739	15,4	95398	78,3	7672	6,3
GORJ	229508	100,0	26253	11,4	192873	84,0	10382	4,5
HARGHITA	226948	100,0	34253	15,1	181121	79,8	11574	5,1
HUNEDOARA	304999	100,0	44950	14,7	241344	79,1	18705	6,1
IALOMITA	139366	100,0	20350	14,6	108943	78,2	10073	7,2
IASI	506373	100,0	73764	14,6	406643	80,3	25966	5,1
MARAMURES	324225	100,0	55478	17,1	244616	75,4	24131	7,4
MEHEDINTI	154889	100,0	24897	16,1	119040	76,9	10952	7,1
MURES	416772	100,0	54390	13,1	339997	81,6	22385	5,4
NEAMT	320449	100,0	46396	14,5	252974	78,9	21079	6,6
OLT	181110	100,0	30780	17,0	137198	75,8	13132	7,3
PRAHOVA	511169	100,0	72909	14,3	408920	80,0	29340	5,7
SALAJ	137464	100,0	22515	16,4	105821	77,0	9128	6,6
SATU MARE	238657	100,0	37599	15,8	184865	77,5	16193	6,8
SIBIU	331723	100,0	43304	13,1	271892	82,0	16527	5,0
SUCEAVA	357779	100,0	54425	15,2	277224	77,5	26130	7,3
TELEORMAN	162262	100,0	25833	15,9	126934	78,2	9495	5,9
TIMIS	510579	100,0	77821	15,2	406106	79,5	26652	5,2
TULCEA	178539	100,0	22344	12,5	146304	81,9	9891	5,5
VASLUI	187868	100,0	27135	14,4	147300	78,4	13433	7,2
VALCEA	233078	100,0	35446	15,2	181344	77,8	16288	7,0
VRANCEA	185923	100,0	27267	14,7	149847	80,6	8809	4,7
MUN. BUCURESTI	3026705	100,0	402916	13,3	2464967	81,4	158822	5,2
ILFOV	257533	100,0	44599	17,3	201345	78,2	11589	4,5

Table no.3

Number and structure of incorporations in the trade registers during December 1990 - October 2011

Period (year, month)	Registered companies		Percentage	
	No.	%	%	
0	1	2	3	
Total, 31 October 2011, out of which	2202112	100,0		
Period 1990 - 2000	849469	38,9		
Year 2001	61265	2,8		
Year 2002	84780	3,8		
Year 2003	123582	5,6		
Year 2004	144284	6,6		
Year 2005	159464	7,2		
Year 2006	135371	6,1		
Year 2007	144728	6,6		
Year 2008	144173	6,5		
Year 2009	116031	5,3		
Year 2010	122831	5,6		
Year 2011 (I - XII) out of which :	116134	4,9	100,0	
January	7783		6,7	
February	10877		9,4	
March	14482		12,5	
April	10436		9,0	
May	13114		11,3	
June	15750		13,6	
July	16462		14,2	
August	9012		7,8	
September	9209		7,9	
October	9009		7,8	

Note: Column 2 reveals the annual structure of incorporations; column 3 reveals the structure by months during the current year.

Diagram no.1

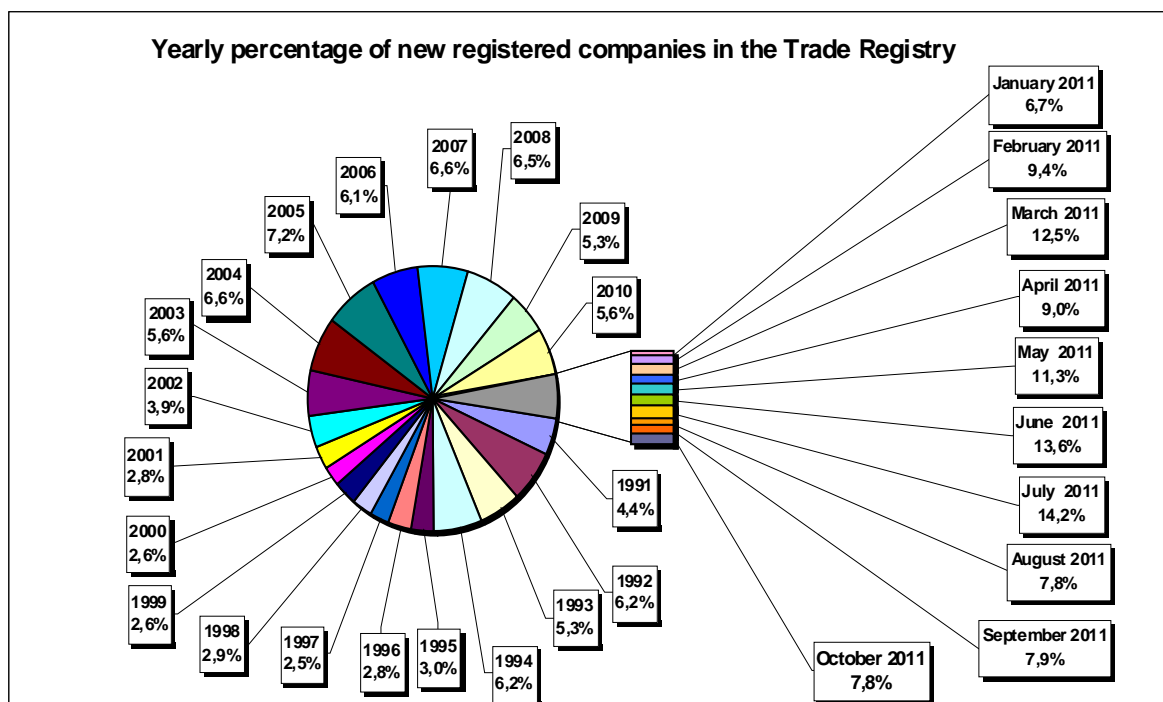


Table no. 4

**Number of incorporations in the trade registers by counties and capital sources during
December 1990 - October 2011**

Counties	Total		out of which:						Mixed capital (state+private)	Ranking by: *
			Private capital				State majority capital			
			out of which:				out of which:			
			PF	Companies	SC	APJ	RA	Companie s		
No.	%	No.	No.	No.	No.	No.	No.	No.		
0	1	2	3	4	5	6	6	7	8	9
Total ROMANIA	2202112	100,0	672244	1509560	2041	5783	1395	2420	8676	X
ALBA	38166	1,7	16645	21081	36	149	38	47	170	23
ARAD	53503	2,4	21757	31107	60	171	30	43	336	15
ARGES	56765	2,6	20287	36037	48	177	31	32	153	10
BACAU	54756	2,5	20587	33550	151	162	35	46	226	12
BIHOR	68777	3,1	21046	47103	63	154	40	62	309	7
BISTRITA-NASAUD	29144	1,3	12674	16156	46	101	29	29	109	29
BOTOSANI	27075	1,2	13656	12878	40	185	21	176	119	32
BRASOV	67522	3,1	17402	49628	58	126	49	87	172	8
BRAILA	30805	1,4	9991	20427	42	102	30	46	167	27
BUZAU	39420	1,8	13043	25975	46	155	28	42	131	22
CARAS-SEVERIN	26657	1,2	10138	16127	42	108	39	65	138	33
CALARASI	22176	1,0	7709	14157	22	93	18	77	100	42
CLUJ	101044	4,6	29814	70647	62	162	52	43	264	2
CONSTANTA	90343	4,1	20860	68539	87	212	51	51	543	3
COVASNA	18778	0,9	7734	10766	41	72	24	32	109	41
DAMBOVITA	41638	1,9	20490	20714	32	141	30	75	156	21
DOLJ	58757	2,7	15586	42658	39	172	40	58	204	9
GALATI	52423	2,4	14205	37819	35	140	30	51	143	16
GIURGIU	18740	0,9	5042	13354	15	85	23	110	111	39
GORJ	26252	1,2	8142	17666	26	184	51	83	100	34
HARGHITA	34253	1,6	15957	17836	64	97	24	43	232	26
HUNEDOARA	44950	2,0	14180	30227	33	85	42	96	287	18
IALOMITA	20350	0,9	8259	11829	27	83	15	46	91	40
IASI	73764	3,3	25797	47255	87	171	34	78	344	5
MARAMURES	55478	2,5	24268	30836	43	129	38	41	124	11
MEHEDINTI	24897	1,1	9850	14794	19	89	19	27	99	36
MURES	54390	2,5	22165	31764	68	160	30	34	169	14
NEAMT	46396	2,1	18600	27336	66	168	30	30	166	17
OLT	30780	1,4	12878	17496	27	166	26	64	123	28
PRAHOVA	72909	3,3	25316	46944	67	184	52	74	272	6
SALAJ	22515	1,0	10041	12211	41	111	19	28	64	37
SATU MARE	37599	1,7	14244	23015	41	102	21	42	135	24
SIBIU	43304	2,0	13507	29333	37	121	35	110	161	20
SUCEAVA	54425	2,5	27055	26759	73	219	31	67	221	13
TELEORMAN	25833	1,2	10158	15226	33	165	21	46	184	35
TIMIS	77821	3,5	16193	60946	69	155	38	69	351	4
TULCEA	22344	1,0	8759	13209	36	67	19	42	212	38
VASLUI	27135	1,2	13840	12964	22	116	16	41	136	31
VALCEA	35446	1,6	15543	19465	67	174	42	40	115	25
VRANCEA	27267	1,2	9867	17091	35	115	17	28	114	30
MUN. BUCURESTI	402916	18,3	42256	359076	64	157	116	106	1142	1
ILFOV	44599	2,0	6703	37559	31	98	21	13	174	19

*) The total number of incorporations (col 1)

Table no. 5

**Number of incorporations in the trade registers by counties and business categories
during December 1990 – October 2011**

County	Total		out of which:							
			PF	companies: 1520656				RA	SC	APJ
	SNC	SCS		SRL	SA					
	No.	%	No.	No.	No.	No.	No.	No.	No.	
0	1	2	3	4	5	6	7	8	9	10
Total ROMÂNIA	2202112	100,0	672244	32683	1630	1452081	34255	1395	2041	5783
ALBA	38166	1,7	16645	890	11	19820	577	38	36	149
ARAD	53502	2,4	21757	54	13	30700	717	30	60	171
ARGES	56766	2,6	20287	107	15	35255	846	31	48	177
BACAU	54756	2,5	20587	1299	4	31756	762	35	151	162
BIHOR	68777	3,1	21046	127	48	46360	939	40	63	154
BISTRITA-NASAUD	29144	1,3	12674	146	26	15686	436	29	46	101
BOTOSANI	27075	1,2	13656	468	1	12241	463	21	40	185
BRASOV	67488	3,1	17402	239	21	48686	907	49	58	126
BRAILA	30839	1,4	9991	376	12	19742	544	30	42	102
BUZAU	39420	1,8	13043	3747	46	21759	596	28	46	155
CARAS-SEVERIN	26657	1,2	10138	118	9	15726	477	39	42	108
CALARASI	22176	1,0	7709	609	3	13356	366	18	22	93
CLUJ	101044	4,6	29814	2112	21	67441	1380	52	62	162
CONSTANTA	90343	4,1	20860	311	23	67257	1542	51	87	212
COVASNA	18778	0,9	7734	148	4	10441	314	24	41	72
DAMBOVITA	41638	1,9	20490	60	8	20369	508	30	32	141
DOLJ	58757	2,7	15586	1560	8	40424	928	40	39	172
GALATI	52423	2,4	14205	1574	6	35560	873	30	35	140
GIURGIU	18739	0,9	5042	35	8	13193	338	23	15	85
GORJ	26253	1,2	8142	29	1	17312	508	51	26	184
HARGHITA	34253	1,6	15957	62	7	17537	505	24	64	97
HUNEDOARA	44950	2,0	14180	1166	98	28645	701	42	33	85
IALOMITA	20350	0,9	8259	269	12	11330	355	15	27	83
IASI	73764	3,3	25797	508	112	46003	1052	34	87	171
MARAMURES	55478	2,5	24268	1928	23	28432	617	38	43	129
MEHEDINTI	24897	1,1	9850	427	3	14144	346	19	19	89
MURES	54390	2,5	22165	37	34	31202	694	30	68	160
NEAMT	46396	2,1	18600	3293	30	23522	687	30	66	168
OLT	30780	1,4	12878	1611	1	15565	506	26	27	166
PRAHOVA	72909	3,3	25316	3122	15	43205	948	52	67	184
SALAJ	22515	1,0	10041	600	4	11398	301	19	41	111
SATU MARE	37599	1,7	14244	283	10	22412	486	21	41	102
SIBIU	43304	2,0	13507	778	50	28085	691	35	37	121
SUCEAVA	54425	2,5	27055	438	8	25996	605	31	73	219
TELEORMAN	25833	1,2	10158	272	399	14348	437	21	33	165
TIMIS	77821	3,5	16193	617	35	59412	1302	38	69	155
TULCEA	22344	1,0	8759	1363	114	11500	486	19	36	67
VASLUI	27135	1,2	13840	90	13	12611	427	16	22	116
VALCEA	35446	1,6	15543	364	6	18737	513	42	67	174
VRANCEA	27267	1,2	9867	357	10	16396	470	17	35	115
MUN. BUCURESTI	402916	18,3	42256	1039	323	351567	7394	116	64	157
ILFOV	44599	2,0	6703	50	35	36950	711	21	31	98

Table no. 6

Operations performed in the trade registers by counties and categories of registration in the month of October 2011

County	Total of operations carried on		out of which:					
			New incorporations		Changes in statutory documents		Strike off companies	
	No.	%	No.	%	No.	%	No.	%
0	1	2	3	4	5	6	9	10
Total ROMÂNIA	57697	100,0	9009	15,6	42570	73,8	6118	10,6
ALBA	639	100,0	172	26,9	415	64,9	52	8,1
ARAD	1211	100,0	197	16,3	895	73,9	119	9,8
ARGES	1431	100,0	264	18,4	1009	70,5	158	11,0
BACAU	1129	100,0	215	19,0	800	70,9	114	10,1
BIHOR	1497	100,0	299	20,0	1018	68,0	180	12,0
BISTRITA-NASAUD	726	100,0	88	12,1	582	80,2	56	7,7
BOTOSANI	634	100,0	121	19,1	432	68,1	81	12,8
BRASOV	1931	100,0	272	14,1	1491	77,2	168	8,7
BRAILA	621	100,0	141	22,7	384	61,8	96	15,5
BUZAU	978	100,0	131	13,4	667	68,2	180	18,4
CARAS-SEVERIN	515	100,0	111	21,6	371	72,0	33	6,4
CALARASI	469	100,0	85	18,1	335	71,4	49	10,4
CLUJ	2313	100,0	469	20,3	1686	72,9	158	6,8
CONSTANTA	2573	100,0	374	14,5	1996	77,6	203	7,9
COVASNA	416	100,0	61	14,7	320	76,9	35	8,4
DAMBOVITA	741	100,0	145	19,6	510	68,8	86	11,6
DOLJ	2534	100,0	281	11,1	2111	83,3	142	5,6
GALATI	1370	100,0	221	16,1	1002	73,1	147	10,7
GIURGIU	482	100,0	74	15,4	381	79,0	27	5,6
GORJ	568	100,0	108	19,0	424	74,6	36	6,3
HARGHITA	704	100,0	137	19,5	527	74,9	40	5,7
HUNEDOARA	1563	100,0	182	11,6	1255	80,3	126	8,1
IALOMITA	364	100,0	88	24,2	223	61,3	53	14,6
IASI	2345	100,0	405	17,3	1668	71,1	272	11,6
MARAMURES	1097	100,0	194	17,7	832	75,8	71	6,5
MEHEDINTI	359	100,0	70	19,5	247	68,8	42	11,7
MURES	1169	100,0	221	18,9	851	72,8	97	8,3
NEAMT	834	100,0	156	18,7	632	75,8	46	5,5
OLT	524	100,0	93	17,7	398	76,0	33	6,3
PRAHOVA	1626	100,0	291	17,9	1124	69,1	211	13,0
SALAJ	672	100,0	74	11,0	536	79,8	62	9,2
SATU MARE	936	100,0	122	13,0	739	79,0	75	8,0
SIBIU	1248	100,0	198	15,9	942	75,5	108	8,7
SUCEAVA	1125	100,0	201	17,9	832	74,0	92	8,2
TELEORMAN	560	100,0	98	17,5	421	75,2	41	7,3
TIMIS	2181	100,0	361	16,6	1591	72,9	229	10,5
TULCEA	569	100,0	61	10,7	404	71,0	104	18,3
VASLUI	704	100,0	94	13,4	587	83,4	23	3,3
VALCEA	883	100,0	125	14,2	675	76,4	83	9,4
VRANCEA	561	100,0	87	15,5	389	69,3	85	15,2
MUN. BUCURESTI	12857	100,0	1582	12,3	9243	71,9	2032	15,8
ILFOV	2038	100,0	340	16,7	1625	79,7	73	3,6

*) by effect of implementation of Law no. 314/2001, art.1 and art. 6

Table no.7

Number of incorporations in the trade registers by counties and business categories in the month of October 2011

County	Total		out of which:						APJ	
			PF	companies: 4997				RA		SC
	SNC	SCS		SRL	SA					
	No.	%	No.	No.	No.	No.	No.	No.		
0	1	2	3	4	5	6	7	8	9	
Total ROMÂNIA	9009	100,0	4007			4972	25		2	3
ALBA	172	1,9	91			80	1			
ARAD	197	2,2	97			99	1			
ARGES	264	2,9	133			131				
BACAU	215	2,4	118			96	1			
BIHOR	299	3,3	134			164				1
BISTRITA-NASAUD	88	1,0	42			46				
BOTOSANI	121	1,3	89			32				
BRASOV	272	3,0	132			139	1			
BRAILA	141	1,6	65			75	1			
BUZAU	131	1,5	57			73				1
CARAS-SEVERIN	111	1,2	56			55				
CALARASI	85	0,9	49			36				
CLUJ	469	5,2	209			256	4			
CONSTANTA	374	4,2	137			236	1			
COVASNA	61	0,7	42			19				
DAMBOVITA	145	1,6	95			50				
DOLJ	281	3,1	99			182				
GALATI	221	2,5	101			120				
GIURGIU	74	0,8	21			52	1			
GORJ	108	1,2	65			43				
HARGHITA	137	1,5	94			43				
HUNEDOARA	182	2,0	83			97	2			
IALOMITA	88	1,0	43			45				
IASI	405	4,5	216			189				
MARAMURES	194	2,2	117			77				
MEHEDINTI	70	0,8	39			31				
MURES	221	2,5	131			90				
NEAMT	156	1,7	84			72				
OLT	93	1,0	37			56				
PRAHOVA	291	3,2	152			138	1			
SALAJ	74	0,8	45			29				
SATU MARE	122	1,4	65			55	1			1
SIBIU	198	2,2	101			97				
SUCEAVA	201	2,2	109			92				
TELEORMAN	98	1,1	45			53				
TIMIS	361	4,0	142			219				
TULCEA	61	0,7	30			31				
VASLUI	94	1,0	53			41				
VALCEA	125	1,4	73			49	1		2	
VRANCEA	87	1,0	39			47	1			
MUN. BUCURESTI	1582	17,6	408			1167	7			
ILFOV	340	3,8	69			270	1			

Table no.8

Number of incorporations in the trade registers by counties and capital sources in the month of October 2011

County	Total		out of which:						Ranking by: *	
			Private capital			State majority capital		Mixed capital (state+private)		
			out of which:			out of which:		Companies		
			PF	Companies	SC	APJ	RA	Companies		Companies
			No.	No.	No.		No.	No.		No.
0	1	2	3	4	5	6	7	8	9	
Total ROMANIA	9009	100,0	4007	4997	2	3				X
ALBA	172	1,9	91	81						23
ARAD	197	2,2	97	100						15
ARGES	264	2,9	133	131						11
BACAU	215	2,4	118	97						14
BIHOR	299	3,3	134	164		1				9
BISTRITA-NASAUD	88	1,0	42	46						29
BOTOSANI	121	1,3	89	32						42
BRASOV	272	3,0	132	140						8
BRAILA	141	1,6	65	76						25
BUZAU	131	1,5	57	73		1				19
CARAS-SEVERIN	111	1,2	56	55						30
CALARASI	85	0,9	49	36						34
CLUJ	469	5,2	209	260						2
CONSTANTA	374	4,2	137	237						5
COVASNA	61	0,7	42	19						35
DAMBOVITA	145	1,6	95	50						24
DOLJ	281	3,1	99	182						10
GALATI	221	2,5	101	120						13
GIURGIU	74	0,8	21	53						37
GORJ	108	1,2	65	43						28
HARGHITA	137	1,5	94	43						31
HUNEDOARA	182	2,0	83	99						17
IALOMITA	88	1,0	43	45						40
IASI	405	4,5	216	189						3
MARAMURES	194	2,2	117	77						12
MEHEDINTI	70	0,8	39	31						41
MURES	221	2,5	131	90						18
NEAMT	156	1,7	84	72						21
OLT	93	1,0	37	56						26
PRAHOVA	291	3,2	152	139						7
SALAJ	74	0,8	45	29						38
SATU MARE	122	1,4	65	56		1				27
SIBIU	198	2,2	101	97						16
SUCEAVA	201	2,2	109	92						20
TELEORMAN	98	1,1	45	53						32
TIMIS	361	4,0	142	219						4
TULCEA	61	0,7	30	31						33
VASLUI	94	1,0	53	41						36
VALCEA	125	1,4	73	50	2					22
VRANCEA	87	1,0	39	48						39
MUN. BUCURESTI	1582	17,6	408	1174						1
ILFOV	340	3,8	69	271						6

*) The total number of incorporations (col 1)

*** Less than 0,01%

Table no. 10

Number of incorporated trading companies and the value of the subscribed share capital, by counties, in the month of October 2011

County	Total registered companies		Subscribed capital		Average subscribed capital on company
	No.	%	thousand Lei	%	thousand Lei
0	1	2	3	4	5
Total ROMÂNIA	4997	100,0	547 141,2	100,0	109,8
ALBA	81	1,6	111,1	0,0	1,4
ARAD	100	2,0	146,4	0,0	1,5
ARGES	131	2,6	5940,5	1,1	45,3
BACAU	97	1,9	125,5	0,0	1,3
BIHOR	164	3,3	536,8	0,1	3,3
BISTRITA-NASAUD	46	0,9	32,1	***	0,7
BOTOSANI	32	0,6	11,6	***	0,4
BRASOV	140	2,8	681,2	0,1	4,9
BRAILA	76	1,5	836,6	0,2	11,0
BUZAU	73	1,5	45,6	***	0,6
CARAS-SEVERIN	55	1,1	102,8	0,0	1,9
CALARASI	36	0,7	17,4	***	0,5
CLUJ	260	5,2	1144,9	0,2	4,4
CONSTANTA	237	4,7	1168,4	0,2	5,0
COVASNA	19	0,4	8,0	***	0,4
DAMBOVITA	50	1,0	15,4	***	0,3
DOLJ	182	3,6	83,8	0,0	0,5
GALATI	120	2,4	546,2	0,1	4,6
GIURGIU	53	1,1	612,6	0,1	11,8
GORJ	43	0,9	68,3	0,0	1,6
HARGHITA	43	0,9	455,1	0,1	10,6
HUNEDOARA	99	2,0	1367,2	0,2	14,0
IALOMITA	45	0,9	377,5	0,1	8,4
IASI	189	3,8	384,7	0,1	2,0
MARAMURES	77	1,5	30,7	***	0,4
MEHEDINTI	31	0,6	6,9	***	0,2
MURES	90	1,8	557,6	0,1	6,2
NEAMT	72	1,4	100,9	0,0	1,4
OLT	56	1,1	11,4	***	0,2
PRAHOVA	139	2,8	751,0	0,1	5,4
SALAJ	29	0,6	6,6	***	0,2
SATU MARE	56	1,1	20426,2	3,7	364,8
SIBIU	97	1,9	121,7	0,0	1,3
SUCEAVA	92	1,8	60,1	0,0	0,7
TELEORMAN	53	1,1	222,2	0,0	4,2
TIMIS	219	4,4	305,5	0,1	1,4
TULCEA	31	0,6	176,2	0,0	5,7
VASLUI	41	0,8	541,3	0,1	13,2
VALCEA	50	1,0	100,7	0,0	2,0
VRANCEA	48	1,0	128,0	0,0	2,7
MUN. BUCURESTI	1174	23,5	238131,6	43,5	203,7
ILFOV	271	5,4	270643,0	49,5	998,7

Note: The average does not include filials because according to the Law no.31/1990 they are not juridical persons

**** Less than 0,01%*

Table no. 11

Number of incorporated trading companies and the value of the subscribed share capital by legal forms, in the month of October 2011

Company type	Total registered companies		Subscribed capital		Average subscribed capital on company
	No.	%	thousand Lei	%	thousand Lei
0	1	2	3	4	5
Total ROMÂNIA	4997	100,0	547141,2	100,0	109,8
SNC					
SCS					
SA	25	0,5	94568,7	17,3	4977,3
SRL	4972	99,5	452572,5	82,7	91,2

Note: The average does not include filials because according to the Law no.31/1990 they are not juridical persons

*** Less than 0,01%

Diagram no.5

