



MINISTRY OF JUSTICE

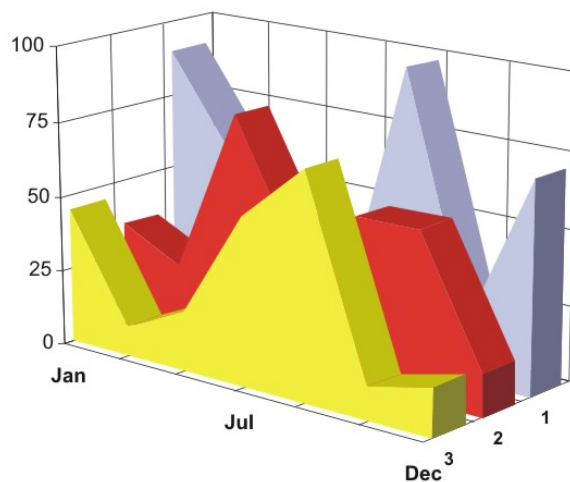
THE NATIONAL TRADE REGISTER OFFICE

București, Bd. Unirii nr. 74, Bl. J3b, tronson II+III, sector 3; Telefon: +40 21 316.08.04, 316.08.10; Fax: +40 21 316.08.03; Cod poștal: 030837
Website: www.onrc.ro; E-mail: onrc@onrc.ro; Cod identificare Fiscală: 14942091

OPERATIONS IN THE CENTRAL TRADE REGISTER

STATISTIC SYNTHESIS

OF RECORDS IN THE CENTRAL TRADE REGISTER - 30th September 2011 - provisional data -



- ISSUE No. 238 -

MINISTRY OF JUSTICE

THE NATIONAL TRADE REGISTER OFFICE

- Operations such as incorporation of trading companies, submission of changes, and strike-off are carried out based on Law No.26/1990, as republished, Law No.31/1990, as republished and on the Methodological Norms no. P/608/1998.
- This work reflects the evolution of the operations with the Trade Register Office attached to Bucharest Law Court and the Trade Register Offices attached to County Law Courts.
- The data contained in the Central Trade Register refer to operations for which law sets out the obligation of being registered in the trade registers kept by the 42 trade register offices attached to law courts.

• The content of this publication shall not be reproduced, partly or entirely, in original or modified form, and shall not be stored in a recovery system and shall not be transmitted in any form or by any means without prior written authorization of the Ministry of Justice – The National Trade Register Office.

• The content of this publication December be used in articles, studies, books, as supporting or explanatory data only by clearly and accurately indicating the source.

CONTENTS

Page

1	Definitions	1
2.1	Data related to the period December 1990 – September 2011	3
	Table no. 1 – Operations performed in the trade registers by categories of registration during December 1990 –September 2011, total by country and by counties, shares of counties in the total by country	3
	Table no. 2 – Operations performed in the trade registers by categories of registration during 1990 –September 2011, total by country and counties, share of categories of operations in the total of each county	4
	Table no. 3 – Number and structure of incorporations in the trade registers during 1990-September 2011	5
	Chart no. 1 – Structure by years of incorporations in the trade register	
	Table no. 4 – Number of incorporations in the trade registers by counties and capital sources during 1990 - September 2011	6
	Table no. 5 – Number of incorporations in the trade registers by counties and business categories during 1990 –September 2011	7
2.2	Data related to September 2011	8
	Table no. 6 – Operations performed in the trade registers by counties and categories of registrations in the month of September 2011	8
	Table no. 7 – Number of incorporations in the trade registers by counties and capital sources in the month of September 2011	9
	Table no. 8 – Number of incorporations in the trade registers by counties and business categories in the month of September 2011	10
	Table no. 9 –Number of incorporations in the trade registers by domains of activity and business categories in the month of September 2011	11-12
	Table no. 10 – Number of incorporated trading companies and the value of subscribed share capital, by counties, in the month of September 2011	13
	Table no. 11– Number of incorporated trading companies and the value of subscribed share capital by legal forms, in the month of September 2011	14
	Chart no. 5 – Average value of subscribed share capital by types of trading companies in the month of September 2011	14

Definitions

The Trade Register Office was established based on Law No. 26/1990, as republished and subsequently amended and supplemented, operates as an active institution since 1990 and is twofold structured:

- at national level, represented by the National Trade Register Office organized under the authority of the Ministry of Justice
- at local level, represented by the 42 Trade Register Offices attached to Law Courts, organized under the subordination of the National Trade Register Office

Categories of persons liable to registration in the trade register:

- natural persons: authorized natural persons, individual enterprises and family enterprises currently carrying on trading activities;

- legal persons represented by: Trading Companies, National Societies and Companies, National R&D Institutes, Autonomous Administrations, Co-operative Societies, Agricultural Co-operatives, Co-operative Organizations, Economic Interest Groupings, European Economic Interest Groupings, European Societies, European Co-operative Societies, branches of trading companies with legal establishment, operation and incorporation regime of trading company legal form under which they were incorporated.

- **Terms used in tables and charts**

- **Number of companies**, depending on the table, represents the number of trading companies incorporated during the reference period, the number of trading companies struck-off from the trade register. The following forms of organization are included: limited liability companies, joint-stock companies, limited partnerships by share, limited partnerships, general partnerships, and branches thereof.

- **Value of subscribed share capital:**

- **total, expressed in national currency**: the share capital value resulted by adding up the subscribed values (in cash and in kind) in national currency (lei)

- **Regions of economic development:**

<i>North-East:</i>	Suceava, Botoșani, Neamț, Iași, Bacău, Vaslui.
<i>South-East:</i>	Vrancea, Galați, Buzău, Brăila, Tulcea, Constanța.
<i>South-Muntenia:</i>	Argeș, Dâmbovița, Prahova, Teleorman, Giurgiu, Călărași, Ialomița.
<i>South-West Oltenia:</i>	Gorj, Vâlcea, Dolj, Mehedinți, Olt.
<i>West:</i>	Arad, Caraș-Severin, Hunedoara, Timiș.
<i>North-West:</i>	Bihor, Bistrița, Cluj, Satu Mare, Sălaj, Maramureș.
<i>Center:</i>	Alba, Brașov, Covasna, Harghita, Mureș, Sibiu.
<i>Bucharest-</i>	București, Ilfov.

Ifov:

NACE Code – The classification of economic activities in the national economy was approved by GO No. 656/1997, amended by Order No 601/2002 and Order no. 337/2007 of the President of the National Institute of Statistics, and complies with the international classification used in statistic reports and official documents. The activities are ranked by the harmonization principle, by sections, divisions, groups and classes.

Abbreviations

- **PF** - Natural Person; the following forms of organization are included in this category: natural persons and family associations registered until 25.04.2008, authorized natural persons, individual enterprises and family enterprises.
- **SNC** - General Partnership
- **SCS** - Limited Partnership
- **SCA** - Limited Partnership by Share
- **SA** - Joint-Stock Company
- **SRL** - Limited Liability Company
- **RA** - Autonomous Administration
- **APJ** - Other legal persons having the obligation to register in the trade register: National R&D Institutes, Economic Interest Groupings, European Economic Interest Groupings, European Societies, European Co-operative Societies, Agricultural Co-operatives, Co-operative Organizations.

Sources of Information:

The integrated IT system of the trade register is designed by The National Trade Register Office in compliance with the provisions of the related legislation in force. The source of information consists of the trade registers organized in computerized system, kept by the trade register offices attached to law courts.

Table no. 1

**Operations performed in the trade registers by categories of registration during
December 1990 – September 2011, total by country and by counties, share of
counties in the total by country**

Counties	Total of registered operations		out of which :					
			Registered companies		Changes in statutory documents		Strike off companies	
	No.	%	No.	%	No.	%	No.	%
0	1	2	3	4	7	8	9	10
Total ROMÂNIA	15158742	100,0	2193103	100,0	12104991	100,0	860648	100,0
ALBA	229948	1,5	37994	1,7	179677	1,5	12277	1,4
ARAD	357644	2,4	53306	2,4	282534	2,3	21804	2,5
ARGES	366250	2,4	56502	2,6	292578	2,4	17170	2,0
BACAU	350684	2,3	54541	2,5	272409	2,3	23734	2,8
BIHOR	459029	3,0	68478	3,1	367085	3,0	23466	2,7
BISTRITA-NASAUD	184984	1,2	29056	1,3	144993	1,2	10935	1,3
BOTOSANI	142423	0,9	26954	1,2	104028	0,9	11441	1,3
BRASOV	584613	3,9	67216	3,1	493892	4,1	23505	2,7
BRAILA	230645	1,5	30698	1,4	190574	1,6	9373	1,1
BUZAU	263158	1,7	39289	1,8	206652	1,7	17217	2,0
CARAS-SEVERIN	174484	1,2	26546	1,2	135328	1,1	12610	1,5
CALARASI	138064	0,9	22091	1,0	106516	0,9	9457	1,1
CLUJ	669447	4,4	100575	4,6	535804	4,4	33068	3,8
CONSTANTA	652676	4,3	89970	4,1	524865	4,3	37841	4,4
COVASNA	129861	0,9	18717	0,9	103531	0,9	7613	0,9
DAMBOVITA	217789	1,4	41493	1,9	156792	1,3	19504	2,3
DOLJ	411779	2,7	58476	2,7	329940	2,7	23363	2,7
GALATI	385508	2,5	52202	2,4	311323	2,6	21983	2,6
GIURGIU	121327	0,8	18665	0,9	95017	0,8	7645	0,9
GORJ	228940	1,5	26145	1,2	192449	1,6	10346	1,2
HARGHITA	226244	1,5	34116	1,6	180594	1,5	11534	1,3
HUNEDOARA	303436	2,0	44768	2,0	240089	2,0	18579	2,2
IALOMITA	139002	0,9	20262	0,9	108720	0,9	10020	1,2
IASI	504028	3,3	73359	3,3	404975	3,3	25694	3,0
MARAMURES	323128	2,1	55284	2,5	243784	2,0	24060	2,8
MEHEDINTI	154530	1,0	24827	1,1	118793	1,0	10910	1,3
MURES	415603	2,7	54169	2,5	339146	2,8	22288	2,6
NEAMT	319615	2,1	46240	2,1	252342	2,1	21033	2,4
OLT	180586	1,2	30687	1,4	136800	1,1	13099	1,5
PRAHOVA	509543	3,4	72618	3,3	407796	3,4	29129	3,4
SALAJ	136792	0,9	22441	1,0	105285	0,9	9066	1,1
SATU MARE	237721	1,6	37477	1,7	184126	1,5	16118	1,9
SIBIU	330475	2,2	43106	2,0	270950	2,2	16419	1,9
SUCEAVA	356654	2,4	54224	2,5	276392	2,3	26038	3,0
TELEORMAN	161702	1,1	25735	1,2	126513	1,0	9454	1,1
TIMIS	508398	3,4	77460	3,5	404515	3,3	26423	3,1
TULCEA	177970	1,2	22283	1,0	145900	1,2	9787	1,1
VASLUI	187164	1,2	27041	1,2	146713	1,2	13410	1,6
VALCEA	232201	1,5	35327	1,6	180669	1,5	16205	1,9
VRANCEA	185362	1,2	27180	1,2	149458	1,2	8724	1,0
MUN. BUCURESTI	3013839	19,9	401325	18,3	2455724	20,3	156790	18,2
ILFOV	255495	1,7	44259	2,0	199720	1,6	11516	1,3

*** Less 0,01%

Table no. 2

Operations performed in the trade registers during December 1990 – September 2011, total by country and counties, share of categories of operations in the total of each county

Counties	Total of registered operations		out of which :					
			Registered companies		Changes in statutory documents		Strike off companies	
	No.	%	No.	%	No.	%	No.	%
0	1	2	3	4	7	8	11	12
Total ROMANIA	15158742	100,0	2193103	14,5	12104991	79,9	860648	5,7
ALBA	229948	100,0	37994	16,5	179677	78,1	12277	5,3
ARAD	357644	100,0	53306	14,9	282534	79,0	21804	6,1
ARGES	366250	100,0	56502	15,4	292578	79,9	17170	4,7
BACAU	350684	100,0	54541	15,6	272409	77,7	23734	6,8
BIHOR	459029	100,0	68478	14,9	367085	80,0	23466	5,1
BISTRITA-NASAUD	184984	100,0	29056	15,7	144993	78,4	10935	5,9
BOTOSANI	142423	100,0	26954	18,9	104028	73,0	11441	8,0
BRASOV	584613	100,0	67216	11,5	493892	84,5	23505	4,0
BRAILA	230645	100,0	30698	13,3	190574	82,6	9373	4,1
BUZAU	263158	100,0	39289	14,9	206652	78,5	17217	6,5
CARAS-SEVERIN	174484	100,0	26546	15,2	135328	77,6	12610	7,2
CALARASI	138064	100,0	22091	16,0	106516	77,1	9457	6,8
CLUJ	669447	100,0	100575	15,0	535804	80,0	33068	4,9
CONSTANTA	652676	100,0	89970	13,8	524865	80,4	37841	5,8
COVASNA	129861	100,0	18717	14,4	103531	79,7	7613	5,9
DAMBOVITA	217789	100,0	41493	19,1	156792	72,0	19504	9,0
DOLJ	411779	100,0	58476	14,2	329940	80,1	23363	5,7
GALATI	385508	100,0	52202	13,5	311323	80,8	21983	5,7
GIURGIU	121327	100,0	18665	15,4	95017	78,3	7645	6,3
GORJ	228940	100,0	26145	11,4	192449	84,1	10346	4,5
HARGHITA	226244	100,0	34116	15,1	180594	79,8	11534	5,1
HUNEDOARA	303436	100,0	44768	14,8	240089	79,1	18579	6,1
IALOMITA	139002	100,0	20262	14,6	108720	78,2	10020	7,2
IASI	504028	100,0	73359	14,6	404975	80,3	25694	5,1
MARAMURES	323128	100,0	55284	17,1	243784	75,4	24060	7,4
MEHEDINTI	154530	100,0	24827	16,1	118793	76,9	10910	7,1
MURES	415603	100,0	54169	13,0	339146	81,6	22288	5,4
NEAMT	319615	100,0	46240	14,5	252342	79,0	21033	6,6
OLT	180586	100,0	30687	17,0	136800	75,8	13099	7,3
PRAHOVA	509543	100,0	72618	14,3	407796	80,0	29129	5,7
SALAJ	136792	100,0	22441	16,4	105285	77,0	9066	6,6
SATU MARE	237721	100,0	37477	15,8	184126	77,5	16118	6,8
SIBIU	330475	100,0	43106	13,0	270950	82,0	16419	5,0
SUCEAVA	356654	100,0	54224	15,2	276392	77,5	26038	7,3
TELEORMAN	161702	100,0	25735	15,9	126513	78,2	9454	5,8
TIMIS	508398	100,0	77460	15,2	404515	79,6	26423	5,2
TULCEA	177970	100,0	22283	12,5	145900	82,0	9787	5,5
VASLUI	187164	100,0	27041	14,4	146713	78,4	13410	7,2
VALCEA	232201	100,0	35327	15,2	180669	77,8	16205	7,0
VRANCEA	185362	100,0	27180	14,7	149458	80,6	8724	4,7
MUN. BUCURESTI	3013839	100,0	401325	13,3	2455724	81,5	156790	5,2
ILFOV	255495	100,0	44259	17,3	199720	78,2	11516	4,5

Table no.3

Number and structure of incorporations in the trade registers during December 1990 - September 2011

Period (year, month)	Registered companies		Percentage	
	No.	%	%	
0	1	2	3	
Total, 30 September 2010, out of which	2193103	100,00		
Period 1990 - 2000	849469	38,9		
Year 2001	61265	2,8		
Year 2002	84780	3,9		
Year 2003	123582	5,6		
Year 2004	144284	6,6		
Year 2005	159464	7,3		
Year 2006	135371	6,2		
Year 2007	144728	6,6		
Year 2008	144173	6,6		
Year 2009	116031	5,3		
Year 2010	122831	5,6		
Year 2011 (I - XII) out of which :	107125	4,9	100,0	
January	7783			7,3
February	10877			10,2
March	14482			13,5
April	10436			9,7
May	13114			12,2
June	15750			14,7
July	16462			15,4
August	9012			8,4
September	9209			8,6

Note: Column 2 reveals the annual structure of incorporations; column 3 reveals the structure by months during the current year.

Diagram no.1

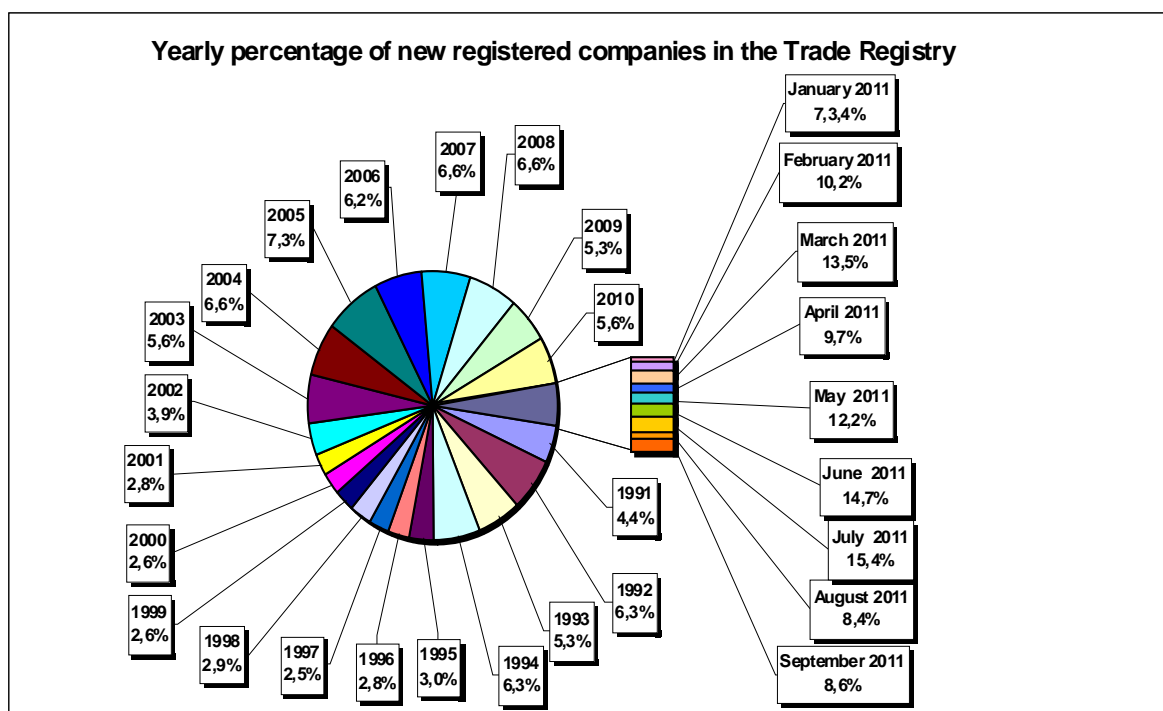


Table no. 4

**Number of incorporations in the trade registers by counties and capital sources during
December 1990 - September 2011**

Counties	Total		out of which:						Mixed capital (state+private)	Ranking by: *
			Private capital			State majority capital				
			out of which:			out of which:				
			PF	Companies	SC	APJ	RA	Companies		
No.	%	No.	No.	No.	No.	No.	No.	No.		
0	1	2	3	4	5	6	7	8	9	
Total ROMANIA	2193103	100,0	668228	1504563	2048	5780	1395	2420	8676	X
ALBA	37994	1,7	16554	21000	36	149	38	47	170	23
ARAD	53307	2,4	21660	31007	61	171	30	43	336	15
ARGES	56501	2,6	20154	35906	48	177	31	32	153	10
BACAU	54541	2,5	20469	33453	151	162	35	46	226	12
BIHOR	68478	3,1	20912	46939	63	153	40	62	309	7
BISTRITA-NASAUD	29056	1,3	12632	16110	46	101	29	29	109	29
BOTOSANI	26954	1,2	13567	12846	40	185	21	176	119	32
BRASOV	67250	3,1	17270	49488	58	126	49	87	172	8
BRAILA	30664	1,4	9926	20351	42	102	30	46	167	28
BUZAU	39289	1,8	12986	25902	46	154	28	42	131	22
CARAS-SEVERIN	26546	1,2	10082	16072	42	108	39	65	138	33
CALARASI	22091	1,0	7660	14121	22	93	18	77	100	42
CLUJ	100575	4,6	29605	70387	62	162	52	43	264	2
CONSTANTA	89970	4,1	20723	68302	88	212	51	51	543	3
COVASNA	18717	0,9	7692	10747	41	72	24	32	109	41
DAMBOVITA	41493	1,9	20395	20664	32	141	30	75	156	21
DOLJ	58476	2,7	15487	42476	39	172	40	58	204	9
GALATI	52202	2,4	14104	37699	35	140	30	51	143	16
GIURGIU	18666	0,9	5021	13301	15	85	23	110	111	39
GORJ	26144	1,2	8077	17623	26	184	51	83	100	34
HARGHITA	34116	1,6	15863	17793	64	97	24	43	232	26
HUNEDOARA	44768	2,0	14097	30128	33	85	42	96	287	18
IALOMITA	20262	0,9	8216	11784	27	83	15	46	91	40
IASI	73359	3,3	25581	47066	87	171	34	78	344	5
MARAMURES	55284	2,5	24151	30759	43	129	38	41	124	11
MEHEDINTI	24827	1,1	9811	14763	19	89	19	27	99	36
MURES	54169	2,5	22034	31674	68	160	30	34	169	14
NEAMT	46240	2,1	18516	27264	66	168	30	30	166	17
OLT	30687	1,4	12841	17440	27	166	26	64	123	27
PRAHOVA	72618	3,3	25164	46805	67	184	52	74	272	6
SALAJ	22441	1,0	9996	12182	41	111	19	28	64	37
SATU MARE	37477	1,7	14179	22959	41	101	21	42	135	24
SIBIU	43106	2,0	13406	29236	37	121	35	110	161	20
SUCEAVA	54224	2,5	26946	26667	73	219	31	67	221	13
TELEORMAN	25735	1,2	10113	15173	33	165	21	46	184	35
TIMIS	77460	3,5	16051	60727	69	155	38	69	351	4
TULCEA	22283	1,0	8729	13178	36	67	19	42	212	38
VASLUI	27041	1,2	13787	12923	22	116	16	41	136	31
VALCEA	35327	1,6	15470	19415	71	174	42	40	115	25
VRANCEA	27180	1,2	9828	17043	35	115	17	28	114	30
MUN. BUCURESTI	401325	18,3	41839	357902	64	157	116	106	1142	1
ILFOV	44259	2,0	6634	37288	31	98	21	13	174	19

*) The total number of incorporations (col 1)

Table no. 5

**Number of incorporations in the trade registers by counties and business categories
during December 1990 – September 2011**

County	Total		out of which:							
			PF	companies: 1515659				RA	SC	APJ
	SNC	SCS		SRL	SA					
	No.	%	No.	No.	No.	No.	No.	No.	No.	
0	1	2	3	4	5	6	7	8	9	10
Total ROMÂNIA	2193103	100,0	668228	32683	1630	1447109	34230	1395	2048	5780
ALBA	37994	1,7	16554	890	11	19740	576	38	36	149
ARAD	53306	2,4	21660	54	13	30601	716	30	61	171
ARGES	56502	2,6	20154	107	15	35124	846	31	48	177
BACAU	54541	2,5	20469	1299	4	31660	761	35	151	162
BIHOR	68478	3,1	20912	127	48	46196	939	40	63	153
BISTRITA-NASAUD	29056	1,3	12632	146	26	15640	436	29	46	101
BOTOSANI	26954	1,2	13567	468	1	12209	463	21	40	185
BRASOV	67216	3,1	17270	239	21	48547	906	49	58	126
BRAILA	30698	1,4	9926	376	12	19667	543	30	42	102
BUZAU	39289	1,8	12986	3747	46	21686	596	28	46	154
CARAS-SEVERIN	26546	1,2	10082	118	9	15671	477	39	42	108
CALARASI	22091	1,0	7660	609	3	13320	366	18	22	93
CLUJ	100575	4,6	29605	2112	21	67185	1376	52	62	162
CONSTANTA	89970	4,1	20723	311	23	67021	1541	51	88	212
COVASNA	18717	0,9	7692	148	4	10422	314	24	41	72
DAMBOVITA	41493	1,9	20395	60	8	20319	508	30	32	141
DOLJ	58476	2,7	15487	1560	8	40242	928	40	39	172
GALATI	52202	2,4	14104	1574	6	35440	873	30	35	140
GIURGIU	18665	0,9	5021	35	8	13141	337	23	15	85
GORJ	26145	1,2	8077	29	1	17269	508	51	26	184
HARGHITA	34116	1,6	15863	62	7	17494	505	24	64	97
HUNEDOARA	44768	2,0	14097	1166	98	28548	699	42	33	85
IALOMITA	20262	0,9	8216	269	12	11285	355	15	27	83
IASI	73359	3,3	25581	508	112	45814	1052	34	87	171
MARAMURES	55284	2,5	24151	1928	23	28355	617	38	43	129
MEHEDINTI	24827	1,1	9811	427	3	14113	346	19	19	89
MURES	54169	2,5	22034	37	34	31112	694	30	68	160
NEAMT	46240	2,1	18516	3293	30	23450	687	30	66	168
OLT	30687	1,4	12841	1611	1	15509	506	26	27	166
PRAHOVA	72618	3,3	25164	3122	15	43067	947	52	67	184
SALAJ	22441	1,0	9996	600	4	11369	301	19	41	111
SATU MARE	37477	1,7	14179	283	10	22357	485	21	41	101
SIBIU	43106	2,0	13406	778	50	27988	691	35	37	121
SUCEAVA	54224	2,5	26946	438	8	25904	605	31	73	219
TELEORMAN	25735	1,2	10113	272	399	14295	437	21	33	165
TIMIS	77460	3,5	16051	617	35	59193	1302	38	69	155
TULCEA	22283	1,0	8729	1363	114	11469	486	19	36	67
VASLUI	27041	1,2	13787	90	13	12570	427	16	22	116
VALCEA	35327	1,6	15470	364	6	18688	512	42	71	174
VRANCEA	27180	1,2	9828	357	10	16349	469	17	35	115
MUN. BUCURESTI	401325	18,3	41839	1039	323	350400	7387	116	64	157
ILFOV	44259	2,0	6634	50	35	36680	710	21	31	98

Table no. 6

Operations performed in the trade registers by counties and categories of registration in the month of September 2011

County	Total of operations carried on		out of which:					
			New incorporations		Changes in statutory documents		Strike off companies	
	No.	%	No.	%	No.	%	No.	%
0	1	2	3	4	5	6	9	10
Total ROMÂNIA	54863	100,0	9209	16,8	41072	74,9	4582	8,4
ALBA	725	100,0	151	20,8	526	72,6	48	6,6
ARAD	1151	100,0	209	18,2	871	75,7	71	6,2
ARGES	1397	100,0	252	18,0	1074	76,9	71	5,1
BACAU	1010	100,0	213	21,1	644	63,8	153	15,1
BIHOR	1382	100,0	268	19,4	1019	73,7	95	6,9
BISTRITA-NASAUD	713	100,0	120	16,8	541	75,9	52	7,3
BOTOSANI	364	100,0	73	20,1	269	73,9	22	6,0
BRASOV	1602	100,0	283	17,7	1201	75,0	118	7,4
BRAILA	649	100,0	128	19,7	443	68,3	78	12,0
BUZAU	969	100,0	178	18,4	755	77,9	36	3,7
CARAS-SEVERIN	392	100,0	112	28,6	261	66,6	19	4,8
CALARASI	447	100,0	88	19,7	290	64,9	69	15,4
CLUJ	2029	100,0	457	22,5	1407	69,3	165	8,1
CONSTANTA	2589	100,0	350	13,5	2118	81,8	121	4,7
COVASNA	406	100,0	85	20,9	298	73,4	23	5,7
DAMBOVITA	581	100,0	146	25,1	382	65,7	53	9,1
DOLJ	1814	100,0	260	14,3	1465	80,8	89	4,9
GALATI	1609	100,0	224	13,9	1264	78,6	121	7,5
GIURGIU	472	100,0	82	17,4	359	76,1	31	6,6
GORJ	593	100,0	122	20,6	441	74,4	30	5,1
HARGHITA	590	100,0	111	18,8	388	65,8	91	15,4
HUNEDOARA	949	100,0	182	19,2	700	73,8	67	7,1
IALOMITA	495	100,0	80	16,2	367	74,1	48	9,7
IASI	2557	100,0	425	16,6	1947	76,1	185	7,2
MARAMURES	1230	100,0	247	20,1	931	75,7	52	4,2
MEHEDINTI	318	100,0	80	25,2	215	67,6	23	7,2
MURES	1136	100,0	180	15,8	874	76,9	82	7,2
NEAMT	893	100,0	166	18,6	649	72,7	78	8,7
OLT	563	100,0	128	22,7	400	71,0	35	6,2
PRAHOVA	1703	100,0	330	19,4	1251	73,5	122	7,2
SALAJ	452	100,0	82	18,1	347	76,8	23	5,1
SATU MARE	821	100,0	126	15,3	636	77,5	59	7,2
SIBIU	1249	100,0	190	15,2	943	75,5	116	9,3
SUCEAVA	1124	100,0	177	15,7	849	75,5	98	8,7
TELEORMAN	484	100,0	102	21,1	357	73,8	25	5,2
TIMIS	2152	100,0	379	17,6	1653	76,8	120	5,6
TULCEA	516	100,0	100	19,4	367	71,1	49	9,5
VASLUI	397	100,0	85	21,4	289	72,8	23	5,8
VALCEA	802	100,0	154	19,2	594	74,1	54	6,7
VRANCEA	510	100,0	82	16,1	375	73,5	53	10,4
MUN. BUCURESTI	13236	100,0	1660	12,5	9943	75,1	1633	12,3
ILFOV	1792	100,0	342	19,1	1369	76,4	81	4,5

*) by effect of implementation of Law no. 314/2001, art.1 and art. 6

Table no.7

Number of incorporations in the trade registers by counties and business categories in the month of September 2011

County	Total		out of which:							
			PF	companies: 5094				RA	SC	APJ
	SNC	SCS		SRL	SA					
	No.	%	No.	No.	No.	No.	No.	No.	No.	
0	1	2	3	4	5	6	7	8	9	
Total ROMÂNIA	9209	100,0	4098		4	5065	25		9	8
ALBA	151	1,6	90			61				
ARAD	209	2,3	97			111			1	
ARGES	252	2,7	117			135				
BACAU	213	2,3	108			103	2			
BIHOR	268	2,9	132			135	1			
BISTRITA-NASAUD	120	1,3	58		3	58				1
BOTOSANI	73	0,8	52			21				
BRASOV	283	3,1	131			152				
BRAILA	128	1,4	65			63				
BUZAU	178	1,9	67			111				
CARAS-SEVERIN	112	1,2	50			62				
CALARASI	88	1,0	53			34				1
CLUJ	457	5,0	234			221	2			
CONSTANTA	350	3,8	138			211			1	
COVASNA	85	0,9	52			32				1
DAMBOVITA	146	1,6	89			57				
DOLJ	260	2,8	104			154	2			
GALATI	224	2,4	113			111				
GIURGIU	82	0,9	27			54				1
GORJ	122	1,3	61			61				
HARGHITA	111	1,2	66			44				1
HUNEDOARA	182	2,0	85			97				
IALOMITA	80	0,9	43			37				
IASI	425	4,6	220			202	2			1
MARAMURES	247	2,7	149			97	1			
MEHEDINTI	80	0,9	45			35				
MURES	180	2,0	107			72	1			
NEAMT	166	1,8	107			59				
OLT	128	1,4	49			79				
PRAHOVA	330	3,6	170			159	1			
SALAJ	82	0,9	53			29				
SATU MARE	126	1,4	56			69	1			
SIBIU	190	2,1	90		1	98	1			
SUCEAVA	177	1,9	92			84				1
TELEORMAN	102	1,1	46			56				
TIMIS	379	4,1	188			191				
TULCEA	100	1,1	42			58				
VASLUI	85	0,9	58			27				
VALCEA	154	1,7	89			57			7	1
VRANCEA	82	0,9	42			40				
MUN. BUCURESTI	1660	18,0	397			1257	6			
ILFOV	342	3,7	66			271	5			

Table no.8

Number of incorporations in the trade registers by counties and capital sources in the month of September 2011

County	Total		out of which:						Rnking by: *	
			Private capital				State majority capital			Mixed capital (state+private)
			out of which:				out of which:			Companies
			PF	Companies	SC	APJ	RA	Companies		Companies
No.	%	No.	No.	No.		No.	No.	No.		
0	1	2	3	4	5	6	7	8	9	
Total ROMÂNIA	9209	100,0	4098	5092	9	8		2		X
ALBA	151	1,6	90	61						23
ARAD	209	2,3	97	111	1					15
ARGES	252	2,7	117	135						11
BACAU	213	2,3	108	105						14
BIHOR	268	2,9	132	136						9
BISTRITA-NASAUD	120	1,3	58	61		1				29
BOTOSANI	73	0,8	52	21						42
BRASOV	283	3,1	131	152						8
BRAILA	128	1,4	65	63						25
BUZAU	178	1,9	67	111						19
CARAS-SEVERIN	112	1,2	50	62						30
CALARASI	88	1,0	53	34		1				34
CLUJ	457	5,0	234	222				1		2
CONSTANTA	350	3,8	138	211	1					5
COVASNA	85	0,9	52	32		1				35
DAMBOVITA	146	1,6	89	57						24
DOLJ	260	2,8	104	156						10
GALATI	224	2,4	113	111						13
GIURGIU	82	0,9	27	54		1				37
GORJ	122	1,3	61	61						28
HARGHITA	111	1,2	66	44		1				31
HUNEDOARA	182	2,0	85	97						17
IALOMITA	80	0,9	43	37						40
IASI	425	4,6	220	203		1		1		3
MARAMURES	247	2,7	149	98						12
MEHEDINTI	80	0,9	45	35						41
MURES	180	2,0	107	73						18
NEAMT	166	1,8	107	59						21
OLT	128	1,4	49	79						26
PRAHOVA	330	3,6	170	160						7
SALAJ	82	0,9	53	29						38
SATU MARE	126	1,4	56	70						27
SIBIU	190	2,1	90	100						16
SUCEAVA	177	1,9	92	84		1				20
TELEORMAN	102	1,1	46	56						32
TIMIS	379	4,1	188	191						4
TULCEA	100	1,1	42	58						33
VASLUI	85	0,9	58	27						36
VALCEA	154	1,7	89	57	7	1				22
VRANCEA	82	0,9	42	40						39
MUN. BUCURESTI	1660	18,0	397	1263						1
ILFOV	342	3,7	66	276						6

*) The total number of incorporations (col 1)

*** Less than 0,01%

Table no. 10

Number of incorporated trading companies and the value of the subscribed share capital, by counties, in the month of September 2011

County	Total registered companies		Subscribed capital		Average subscribed capital on company
	No.	%	thousand Lei	%	thousand Lei
0	1	2	3	4	5
Total ROMÂNIA	5094	100,0	122596,5	100,0	24,1
ALBA	61	1,2	12,2	***	0,2
ARAD	111	2,2	85,0	0,1	0,8
ARGES	135	2,7	70,5	0,1	0,5
BACAU	105	2,1	3781,7	3,1	36,7
BIHOR	136	2,7	2573,4	2,1	19,1
BISTRITA-NASAUD	61	1,2	22,3	0,0	0,4
BOTOSANI	21	0,4	8,2	***	0,4
BRASOV	152	3,0	510,7	0,4	3,4
BRAILA	63	1,2	417,6	0,3	6,6
BUZAU	111	2,2	560,5	0,5	5,0
CARAS-SEVERIN	62	1,2	343,3	0,3	5,5
CALARASI	34	0,7	1840,8	1,5	54,1
CLUJ	223	4,4	650,1	0,5	2,9
CONSTANTA	211	4,1	89,3	0,1	0,4
COVASNA	32	0,6	7,5	***	0,2
DAMBOVITA	57	1,1	58,6	0,0	1,0
DOLJ	156	3,1	269,5	0,2	1,7
GALATI	111	2,2	2935,1	2,4	26,4
GIURGIU	54	1,1	18205,4	14,8	337,1
GORJ	61	1,2	62,5	0,1	1,0
HARGHITA	44	0,9	12,1	***	0,3
HUNEDOARA	97	1,9	245,0	0,2	2,5
IALOMITA	37	0,7	11,0	***	0,3
IASI	204	4,0	468,2	0,4	2,3
MARAMURES	98	1,9	3371,7	2,8	34,4
MEHEDINTI	35	0,7	7,5	***	0,2
MURES	73	1,4	3807,7	3,1	52,2
NEAMT	59	1,2	32,4	0,0	0,5
OLT	79	1,6	554,4	0,5	7,0
PRAHOVA	160	3,1	373,6	0,3	2,3
SALAJ	29	0,6	6,1	***	0,2
SATU MARE	70	1,4	23,6	0,0	0,3
SIBIU	100	2,0	21038,3	17,2	210,4
SUCEAVA	84	1,6	147,0	0,1	1,8
TELEORMAN	56	1,1	13,0	0,0	0,2
TIMIS	191	3,7	769,9	0,6	4,0
TULCEA	58	1,1	393,3	0,3	6,8
VASLUI	27	0,5	5,6	***	0,2
VALCEA	57	1,1	22,5	0,0	0,4
VRANCEA	40	0,8	11,1	***	0,3
MUN. BUCURESTI	1263	24,8	15163,9	12,4	12,1
ILFOV	276	5,4	43614,5	35,6	158,0

Note: The average does not include filials because according to the Law no.31/1990 they are not juridical persons

*** Less than 0,01%

Table no. 11

Number of incorporated trading companies and the value of the subscribed share capital by legal forms, in the month of September 2011

Company type	Total registered companies		Subscribed capital		Average subscribed capital on company
	No.	%	thousand Lei	%	thousand Lei
0	1	2	3	4	5
Total ROMANIA	5094	100,0	122596,5	100,0	24,1
SNC					
SCS	4	0,1	18043,1	14,7	
SA	25	0,5	56349,7	46,0	3130,5
SRL	5065	99,4	48203,7	39,3	9,5

Note: The average does not include filials because according to the Law no.31/1990 they are not juridical persons

*** Less than 0,01%

Diagram no.5

