



MINISTRY OF JUSTICE

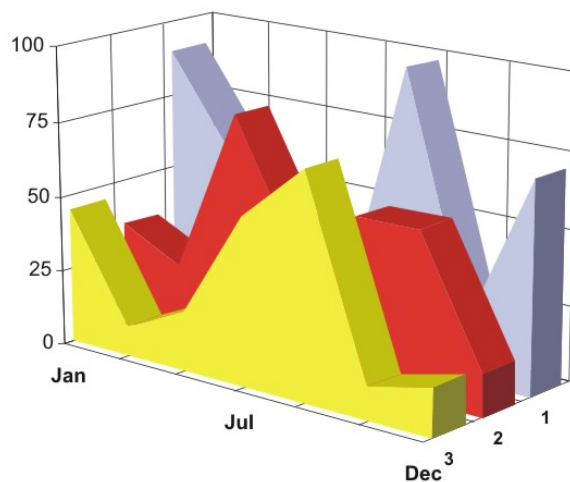
THE NATIONAL TRADE REGISTER OFFICE

București, Bd. Unirii nr. 74, Bl. J3b, tronson II+III, sector 3; Telefon: +40 21 316.08.04, 316.08.10; Fax: +40 21 316.08.03; Cod poștal: 030837
Website: www.onrc.ro; E-mail: onrc@onrc.ro; Cod identificare Fiscală: 14942091

OPERATIONS IN THE CENTRAL TRADE REGISTER

STATISTIC SYNTHESIS

OF RECORDS IN THE CENTRAL TRADE REGISTER - 31th August 2011 - provisional data -



- ISSUE No. 237 -

MINISTRY OF JUSTICE

THE NATIONAL TRADE REGISTER OFFICE

- Operations such as incorporation of trading companies, submission of changes, and strike-off are carried out based on Law No.26/1990, as republished, Law No.31/1990, as republished and on the Methodological Norms no. P/608/1998.
- This work reflects the evolution of the operations with the Trade Register Office attached to Bucharest Law Court and the Trade Register Offices attached to County Law Courts.
- The data contained in the Central Trade Register refer to operations for which law sets out the obligation of being registered in the trade registers kept by the 42 trade register offices attached to law courts.

• The content of this publication shall not be reproduced, partly or entirely, in original or modified form, and shall not be stored in a recovery system and shall not be transmitted in any form or by any means without prior written authorization of the Ministry of Justice – The National Trade Register Office.

• The content of this publication December be used in articles, studies, books, as supporting or explanatory data only by clearly and accurately indicating the source.

CONTENTS

Page

1	Definitions	1
2.1	Data related to the period December 1990 – August 2011	3
	Table no. 1 – Operations performed in the trade registers by categories of registration during December 1990 –August 2011, total by country and by counties, shares of counties in the total by country	3
	Table no. 2 – Operations performed in the trade registers by categories of registration during 1990 –August 2011, total by country and counties, share of categories of operations in the total of each county	4
	Table no. 3 – Number and structure of incorporations in the trade registers during 1990-August 2011	5
	Chart no. 1 – Structure by years of incorporations in the trade register	
	Table no. 4 – Number of incorporations in the trade registers by counties and capital sources during 1990 - August 2011	6
	Table no. 5 – Number of incorporations in the trade registers by counties and business categories during 1990 –August 2011	7
2.2	Data related to August 2011	8
	Table no. 6 – Operations performed in the trade registers by counties and categories of registrations in the month of August 2011	8
	Table no. 7 – Number of incorporations in the trade registers by counties and capital sources in the month of August 2011	9
	Table no. 8 – Number of incorporations in the trade registers by counties and business categories in the month of August 2011	10
	Table no. 9 –Number of incorporations in the trade registers by domains of activity and business categories in the month of August 2011	11-12
	Table no. 10 – Number of incorporated trading companies and the value of subscribed share capital, by counties, in the month of August 2011	13
	Table no. 11– Number of incorporated trading companies and the value of subscribed share capital by legal forms, in the month of August 2011	14
	Chart no. 5 – Average value of subscribed share capital by types of trading companies in the month of August 2011	14

Definitions

The Trade Register Office was established based on Law No. 26/1990, as republished and subsequently amended and supplemented, operates as an active institution since 1990 and is twofold structured:

- at national level, represented by the National Trade Register Office organized under the authority of the Ministry of Justice
- at local level, represented by the 42 Trade Register Offices attached to Law Courts, organized under the subordination of the National Trade Register Office

Categories of persons liable to registration in the trade register:

- natural persons: authorized natural persons, individual enterprises and family enterprises currently carrying on trading activities;

- legal persons represented by: Trading Companies, National Societies and Companies, National R&D Institutes, Autonomous Administrations, Co-operative Societies, Agricultural Co-operatives, Co-operative Organizations, Economic Interest Groupings, European Economic Interest Groupings, European Societies, European Co-operative Societies, branches of trading companies with legal establishment, operation and incorporation regime of trading company legal form under which they were incorporated.

- **Terms used in tables and charts**

- **Number of companies**, depending on the table, represents the number of trading companies incorporated during the reference period, the number of trading companies struck-off from the trade register. The following forms of organization are included: limited liability companies, joint-stock companies, limited partnerships by share, limited partnerships, general partnerships, and branches thereof.

- **Value of subscribed share capital:**

- **total, expressed in national currency:** the share capital value resulted by adding up the subscribed values (in cash and in kind) in national currency (lei)

- **Regions of economic development:**

<i>North-East:</i>	Suceava, Botoșani, Neamț, Iași, Bacău, Vaslui.
<i>South-East:</i>	Vrancea, Galați, Buzău, Brăila, Tulcea, Constanța.
<i>South-Muntenia:</i>	Argeș, Dâmbovița, Prahova, Teleorman, Giurgiu, Călărași, Ialomița.
<i>South-West Oltenia:</i>	Gorj, Vâlcea, Dolj, Mehedinți, Olt.
<i>West:</i>	Arad, Caraș-Severin, Hunedoara, Timiș.
<i>North-West:</i>	Bihor, Bistrița, Cluj, Satu Mare, Sălaj, Maramureș.
<i>Center:</i>	Alba, Brașov, Covasna, Harghita, Mureș, Sibiu.
<i>Bucharest-</i>	București, Ilfov.

Ifov:

NACE Code – The classification of economic activities in the national economy was approved by GO No. 656/1997, amended by Order No 601/2002 and Order no. 337/2007 of the President of the National Institute of Statistics, and complies with the international classification used in statistic reports and official documents. The activities are ranked by the harmonization principle, by sections, divisions, groups and classes.

Abbreviations

- **PF** - Natural Person; the following forms of organization are included in this category: natural persons and family associations registered until 25.04.2008, authorized natural persons, individual enterprises and family enterprises.
- **SNC** - General Partnership
- **SCS** - Limited Partnership
- **SCA** - Limited Partnership by Share
- **SA** - Joint-Stock Company
- **SRL** - Limited Liability Company
- **RA** - Autonomous Administration
- **APJ** - Other legal persons having the obligation to register in the trade register: National R&D Institutes, Economic Interest Groupings, European Economic Interest Groupings, European Societies, European Co-operative Societies, Agricultural Co-operatives, Co-operative Organizations.

Sources of Information:

The integrated IT system of the trade register is designed by The National Trade Register Office in compliance with the provisions of the related legislation in force. The source of information consists of the trade registers organized in computerized system, kept by the trade register offices attached to law courts.

Table no. 1

**Operations performed in the trade registers by categories of registration during
December 1990 – August 2011, total by country and by counties, share of counties
in the total by country**

Counties	Total of registered operations		out of which :					
			Registered companies		Changes in statutory documents		Strike off companies	
	No.	%	No.	%	No.	%	No.	%
0	1	2	3	4	7	8	9	10
Total ROMÂNIA	15103877	100,0	2183892	100,0	12063919	100,0	856066	100,0
ALBA	229223	1,5	37843	1,7	179151	1,5	12229	1,4
ARAD	356493	2,4	53097	2,4	281663	2,3	21733	2,5
ARGES	364853	2,4	56250	2,6	291504	2,4	17099	2,0
BACAU	349674	2,3	54328	2,5	271765	2,3	23581	2,8
BIHOR	457647	3,0	68210	3,1	366066	3,0	23371	2,7
BISTRITA-NASAUD	184271	1,2	28936	1,3	144452	1,2	10883	1,3
BOTOSANI	142059	0,9	26881	1,2	103759	0,9	11419	1,3
BRASOV	583011	3,9	66933	3,1	492691	4,1	23387	2,7
BRAILA	229996	1,5	30570	1,4	190131	1,6	9295	1,1
BUZAU	262189	1,7	39111	1,8	205897	1,7	17181	2,0
CARAS-SEVERIN	174092	1,2	26434	1,2	135067	1,1	12591	1,5
CALARASI	137617	0,9	22003	1,0	106226	0,9	9388	1,1
CLUJ	667418	4,4	100118	4,6	534397	4,4	32903	3,8
CONSTANTA	650087	4,3	89620	4,1	522747	4,3	37720	4,4
COVASNA	129455	0,9	18632	0,9	103233	0,9	7590	0,9
DAMBOVITA	217208	1,4	41347	1,9	156410	1,3	19451	2,3
DOLJ	409965	2,7	58216	2,7	328475	2,7	23274	2,7
GALATI	383899	2,5	51978	2,4	310059	2,6	21862	2,6
GIURGIU	120855	0,8	18583	0,9	94658	0,8	7614	0,9
GORJ	228347	1,5	26023	1,2	192008	1,6	10316	1,2
HARGHITA	225654	1,5	34005	1,6	180206	1,5	11443	1,3
HUNEDOARA	302487	2,0	44586	2,0	239389	2,0	18512	2,2
IALOMITA	138507	0,9	20182	0,9	108353	0,9	9972	1,2
IASI	501471	3,3	72934	3,3	403028	3,3	25509	3,0
MARAMURES	321898	2,1	55037	2,5	242853	2,0	24008	2,8
MEHEDINTI	154212	1,0	24747	1,1	118578	1,0	10887	1,3
MURES	414467	2,7	53989	2,5	338272	2,8	22206	2,6
NEAMT	318722	2,1	46074	2,1	251693	2,1	20955	2,4
OLT	180023	1,2	30559	1,4	136400	1,1	13064	1,5
PRAHOVA	507840	3,4	72288	3,3	406545	3,4	29007	3,4
SALAJ	136340	0,9	22359	1,0	104938	0,9	9043	1,1
SATU MARE	236900	1,6	37351	1,7	183490	1,5	16059	1,9
SIBIU	329226	2,2	42916	2,0	270007	2,2	16303	1,9
SUCEAVA	355530	2,4	54047	2,5	275543	2,3	25940	3,0
TELEORMAN	161218	1,1	25633	1,2	126156	1,0	9429	1,1
TIMIS	506246	3,4	77081	3,5	402862	3,3	26303	3,1
TULCEA	177454	1,2	22183	1,0	145533	1,2	9738	1,1
VASLUI	186767	1,2	26956	1,2	146424	1,2	13387	1,6
VALCEA	231401	1,5	35175	1,6	180075	1,5	16151	1,9
VRANCEA	184852	1,2	27098	1,2	149083	1,2	8671	1,0
MUN. BUCURESTI	3000599	19,9	399661	18,3	2445781	20,3	155157	18,1
ILFOV	253703	1,7	43917	2,0	198351	1,6	11435	1,3

*** Less 0,01%

Table no. 2

**Operations performed in the trade registers during December 1990 – August 2011,
total by country and counties, share of categories of operations in the total of each
county**

Counties	Total of registered operations		out of which :					
			Registered companies		Changes in statutory documents		Strike off companies	
	No.	%	No.	%	No.	%	No.	%
0	1	2	3	4	7	8	11	12
Total ROMANIA	15103877	100,0	2183892	14,5	12063919	79,9	856066	5,7
ALBA	229223	100,0	37843	16,5	179151	78,2	12229	5,3
ARAD	356493	100,0	53097	14,9	281663	79,0	21733	6,1
ARGES	364853	100,0	56250	15,4	291504	79,9	17099	4,7
BACAU	349674	100,0	54328	15,5	271765	77,7	23581	6,7
BIHOR	457647	100,0	68210	14,9	366066	80,0	23371	5,1
BISTRITA-NASAUD	184271	100,0	28936	15,7	144452	78,4	10883	5,9
BOTOSANI	142059	100,0	26881	18,9	103759	73,0	11419	8,0
BRASOV	583011	100,0	66933	11,5	492691	84,5	23387	4,0
BRAILA	229996	100,0	30570	13,3	190131	82,7	9295	4,0
BUZAU	262189	100,0	39111	14,9	205897	78,5	17181	6,6
CARAS-SEVERIN	174092	100,0	26434	15,2	135067	77,6	12591	7,2
CALARASI	137617	100,0	22003	16,0	106226	77,2	9388	6,8
CLUJ	667418	100,0	100118	15,0	534397	80,1	32903	4,9
CONSTANTA	650087	100,0	89620	13,8	522747	80,4	37720	5,8
COVASNA	129455	100,0	18632	14,4	103233	79,7	7590	5,9
DAMBOVITA	217208	100,0	41347	19,0	156410	72,0	19451	9,0
DOLJ	409965	100,0	58216	14,2	328475	80,1	23274	5,7
GALATI	383899	100,0	51978	13,5	310059	80,8	21862	5,7
GIURGIU	120855	100,0	18583	15,4	94658	78,3	7614	6,3
GORJ	228347	100,0	26023	11,4	192008	84,1	10316	4,5
HARGHITA	225654	100,0	34005	15,1	180206	79,9	11443	5,1
HUNEDOARA	302487	100,0	44586	14,7	239389	79,1	18512	6,1
IALOMITA	138507	100,0	20182	14,6	108353	78,2	9972	7,2
IASI	501471	100,0	72934	14,5	403028	80,4	25509	5,1
MARAMURES	321898	100,0	55037	17,1	242853	75,4	24008	7,5
MEHEDINTI	154212	100,0	24747	16,0	118578	76,9	10887	7,1
MURES	414467	100,0	53989	13,0	338272	81,6	22206	5,4
NEAMT	318722	100,0	46074	14,5	251693	79,0	20955	6,6
OLT	180023	100,0	30559	17,0	136400	75,8	13064	7,3
PRAHOVA	507840	100,0	72288	14,2	406545	80,1	29007	5,7
SALAJ	136340	100,0	22359	16,4	104938	77,0	9043	6,6
SATU MARE	236900	100,0	37351	15,8	183490	77,5	16059	6,8
SIBIU	329226	100,0	42916	13,0	270007	82,0	16303	5,0
SUCEAVA	355530	100,0	54047	15,2	275543	77,5	25940	7,3
TELEORMAN	161218	100,0	25633	15,9	126156	78,3	9429	5,8
TIMIS	506246	100,0	77081	15,2	402862	79,6	26303	5,2
TULCEA	177454	100,0	22183	12,5	145533	82,0	9738	5,5
VASLUI	186767	100,0	26956	14,4	146424	78,4	13387	7,2
VALCEA	231401	100,0	35175	15,2	180075	77,8	16151	7,0
VRANCEA	184852	100,0	27098	14,7	149083	80,6	8671	4,7
MUN. BUCURESTI	3000599	100,0	399661	13,3	2445781	81,5	155157	5,2
ILFOV	253703	100,0	43917	17,3	198351	78,2	11435	4,5

Table no.3

**Number and structure of incorporations in the trade registers during December 1990
- August 2011**

Period (year, month)	Registered companies		Percentage	
	No.	%	%	
0	1	2	3	
Total, 31 August 2010, out of which Period 1990 - 2000	2183892	100,00		
Year 2001	849469	38,9		
Year 2002	61265	2,8		
Year 2003	84780	3,9		
Year 2004	123582	5,7		
Year 2005	144284	6,6		
Year 2006	159464	7,3		
Year 2007	135371	6,2		
Year 2008	144728	6,6		
Year 2009	144173	6,6		
Year 2010	116031	5,3		
Year 2010	122831	5,6		
Year 2011 (I - XII) out of which :	97916	4,5		100,0
January	7783			7,9
February	10877			11,1
March	14482			14,8
April	10436			10,7
May	13114			13,4
June	15750			16,1
July	16462			16,8
August	9012			9,2

Note: Column 2 reveals the annual structure of incorporations; column 3 reveals the structure by months during the current year.

Diagram no.1

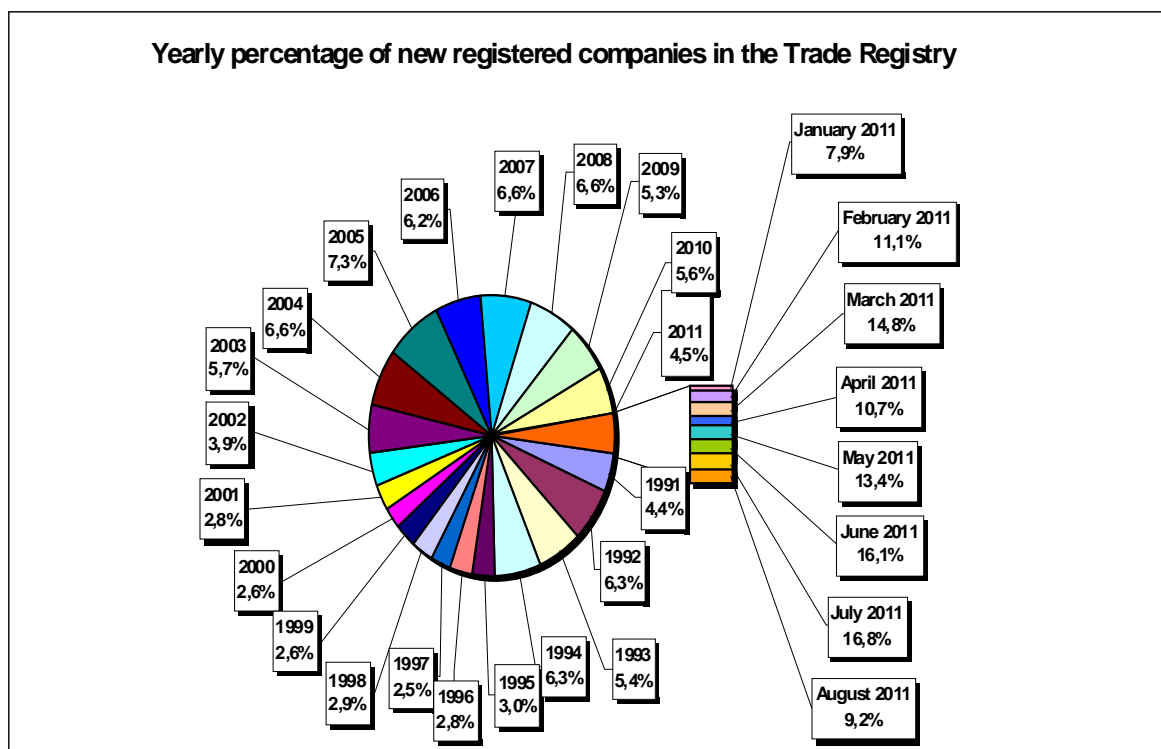


Table no. 4

**Number of incorporations in the trade registers by counties and capital sources during
December 1990 - August 2011**

Counties	Total		out of which:						Mixed capital (state+private)	Ranking by: *
			Private capital				State majority capital			
			out of which:				out of which:			
			PF	Companies	SC	APJ	RA	Companie s		
No.	%	No.	No.	No.	No.	No.	No.	No.		
0	1	2	3	4	5	6	7	8	9	
Total ROMANIA	2183892	100,0	664126	1499471	2041	5772	1395	2418	8676	X
ALBA	37843	1,7	16464	20939	36	149	38	47	170	23
ARAD	53098	2,4	21563	30896	60	171	30	43	336	15
ARGES	56249	2,6	20037	35771	48	177	31	32	153	10
BACAU	54328	2,5	20361	33348	151	162	35	46	226	12
BIHOR	68210	3,1	20780	46803	63	153	40	62	309	7
BISTRITA-NASAUD	28936	1,3	12574	16049	46	100	29	29	109	29
BOTOSANI	26881	1,2	13515	12825	40	185	21	176	119	32
BRASOV	66967	3,1	17139	49336	58	126	49	87	172	8
BRAILA	30536	1,4	9861	20288	42	102	30	46	167	28
BUZAU	39111	1,8	12919	25791	46	154	28	42	131	22
CARAS-SEVERIN	26434	1,2	10032	16010	42	108	39	65	138	33
CALARASI	22003	1,0	7607	14087	22	92	18	77	100	39
CLUJ	100118	4,6	29371	70165	62	162	52	42	264	2
CONSTANTA	89620	4,1	20585	68091	87	212	51	51	543	3
COVASNA	18632	0,9	7640	10715	41	71	24	32	109	41
DAMBOVITA	41347	1,9	20306	20607	32	141	30	75	156	21
DOLJ	58216	2,7	15383	42320	39	172	40	58	204	9
GALATI	51978	2,4	13991	37588	35	140	30	51	143	16
GIURGIU	18584	0,9	4994	13247	15	84	23	110	111	42
GORJ	26022	1,2	8016	17562	26	184	51	83	100	34
HARGHITA	34005	1,6	15797	17749	64	96	24	43	232	26
HUNEDOARA	44586	2,0	14012	30031	33	85	42	96	287	18
IALOMITA	20182	0,9	8173	11747	27	83	15	46	91	40
IASI	72934	3,3	25361	46863	87	170	34	77	344	5
MARAMURES	55037	2,5	24002	30661	43	129	38	41	124	11
MEHEDINTI	24747	1,1	9766	14728	19	89	19	27	99	36
MURES	53989	2,5	21927	31601	68	160	30	34	169	14
NEAMT	46074	2,1	18409	27205	66	168	30	30	166	17
OLT	30559	1,4	12792	17361	27	166	26	64	123	27
PRAHOVA	72288	3,3	24994	46645	67	184	52	74	272	6
SALAJ	22359	1,0	9943	12153	41	111	19	28	64	37
SATU MARE	37351	1,7	14123	22889	41	101	21	42	135	24
SIBIU	42916	2,0	13316	29136	37	121	35	110	161	20
SUCEAVA	54047	2,5	26854	26583	73	218	31	67	221	13
TELEORMAN	25633	1,2	10067	15117	33	165	21	46	184	35
TIMIS	77081	3,5	15863	60536	69	155	38	69	351	4
TULCEA	22183	1,0	8687	13120	36	67	19	42	212	38
VASLUI	26956	1,2	13729	12896	22	116	16	41	136	31
VALCEA	35175	1,6	15381	19358	66	173	42	40	115	25
VRANCEA	27098	1,2	9786	17003	35	115	17	28	114	30
MUN. BUCURESTI	399661	18,3	41438	356639	64	157	116	106	1142	1
ILFOV	43917	2,0	6568	37012	31	98	21	13	174	19

*) The total number of incorporations (col 1)

Table no. 5

**Number of incorporations in the trade registers by counties and business categories
during December 1990 – August 2011**

County	Total		out of which:							
			PF	companies: 1510565				RA	SC	APJ
	SNC	SCS		SRL	SA					
	No.	%	No.	No.	No.	No.	No.	No.	No.	
0	1	2	3	4	5	6	7	8	9	10
Total ROMÂNIA	21 83892	100,0	664126	32683	1626	1442044	34205	1395	2041	5772
ALBA	37843	1,7	16464	890	11	19679	576	38	36	149
ARAD	53097	2,4	21563	54	13	30490	716	30	60	171
ARGES	56250	2,6	20037	107	15	34989	846	31	48	177
BACAU	54328	2,5	20361	1299	4	31557	759	35	151	162
BIHOR	68210	3,1	20780	127	48	46061	938	40	63	153
BISTRITA-NASAUD	28936	1,3	12574	146	23	15582	436	29	46	100
BOTOSANI	26881	1,2	13515	468	1	12188	463	21	40	185
BRASOV	66933	3,1	17139	239	21	48395	906	49	58	126
BRAILA	30570	1,4	9861	376	12	19604	543	30	42	102
BUZAU	39111	1,8	12919	3747	46	21575	596	28	46	154
CARAS-SEVERIN	26434	1,2	10032	118	9	15609	477	39	42	108
CALARASI	22003	1,0	7607	609	3	13286	366	18	22	92
CLUJ	100118	4,6	29371	2112	21	66964	1374	52	62	162
CONSTANTA	89620	4,1	20585	311	23	66810	1541	51	87	212
COVASNA	18632	0,9	7640	148	4	10390	314	24	41	71
DAMBOVITA	41347	1,9	20306	60	8	20262	508	30	32	141
DOLJ	58216	2,7	15383	1560	8	40088	926	40	39	172
GALATI	51978	2,4	13991	1574	6	35329	873	30	35	140
GIURGIU	18583	0,9	4994	35	8	13087	337	23	15	84
GORJ	26023	1,2	8016	29	1	17208	508	51	26	184
HARGHITA	34005	1,6	15797	62	7	17450	505	24	64	96
HUNEDOARA	44586	2,0	14012	1166	98	28451	699	42	33	85
IALOMITA	20182	0,9	8173	269	12	11248	355	15	27	83
IASI	72934	3,3	25361	508	112	45612	1050	34	87	170
MARAMURES	55037	2,5	24002	1928	23	28258	616	38	43	129
MEHEDINTI	24747	1,1	9766	427	3	14078	346	19	19	89
MURES	53989	2,5	21927	37	34	31040	693	30	68	160
NEAMT	46074	2,1	18409	3293	30	23391	687	30	66	168
OLT	30559	1,4	12792	1611	1	15430	506	26	27	166
PRAHOVA	72288	3,3	24994	3122	15	42908	946	52	67	184
SALAJ	22359	1,0	9943	600	4	11340	301	19	41	111
SATU MARE	37351	1,7	14123	283	10	22288	484	21	41	101
SIBIU	42916	2,0	13316	778	49	27890	690	35	37	121
SUCEAVA	54047	2,5	26854	438	8	25820	605	31	73	218
TELEORMAN	25633	1,2	10067	272	399	14239	437	21	33	165
TIMIS	77081	3,5	15863	617	35	59002	1302	38	69	155
TULCEA	22183	1,0	8687	1363	114	11411	486	19	36	67
VASLUI	26956	1,2	13729	90	13	12543	427	16	22	116
VALCEA	35175	1,6	15381	364	6	18631	512	42	66	173
VRANCEA	27098	1,2	9786	357	10	16309	469	17	35	115
MUN. BUCURESTI	399661	18,3	41438	1039	323	349143	7381	116	64	157
ILFOV	43917	2,0	6568	50	35	36409	705	21	31	98

Table no. 6

Operations performed in the trade registers by counties and categories of registration in the month of August 2011

County	Total of operations carried on		out of which:					
			New incorporations		Changes in statutory documents		Strike off companies	
	No.	%	No.	%	No.	%	No.	%
0	1	2	3	4	5	6	9	10
Total ROMÂNIA	52723	100,0	9012	17,1	39098	74,2	4613	8,7
ALBA	695	100,0	167	24,0	480	69,1	48	6,9
ARAD	1187	100,0	224	18,9	902	76,0	61	5,1
ARGES	1074	100,0	238	22,2	780	72,6	56	5,2
BACAU	1166	100,0	223	19,1	826	70,8	117	10,0
BIHOR	1281	100,0	247	19,3	967	75,5	67	5,2
BISTRITA-NASAUD	766	100,0	147	19,2	565	73,8	54	7,0
BOTOSANI	403	100,0	87	21,6	295	73,2	21	5,2
BRASOV	1602	100,0	275	17,2	1239	77,3	88	5,5
BRAILA	541	100,0	128	23,7	344	63,6	69	12,8
BUZAU	636	100,0	146	23,0	439	69,0	51	8,0
CARAS-SEVERIN	416	100,0	101	24,3	264	63,5	51	12,3
CALARASI	379	100,0	86	22,7	271	71,5	22	5,8
CLUJ	1889	100,0	406	21,5	1343	71,1	140	7,4
CONSTANTA	2808	100,0	361	12,9	2318	82,5	129	4,6
COVASNA	407	100,0	83	20,4	301	74,0	23	5,7
DAMBOVITA	675	100,0	172	25,5	447	66,2	56	8,3
DOLJ	1916	100,0	263	13,7	1601	83,6	52	2,7
GALATI	1186	100,0	223	18,8	874	73,7	89	7,5
GIURGIU	712	100,0	93	13,1	580	81,5	39	5,5
GORJ	552	100,0	106	19,2	428	77,5	18	3,3
HARGHITA	482	100,0	90	18,7	351	72,8	41	8,5
HUNEDOARA	793	100,0	174	21,9	570	71,9	49	6,2
IALOMITA	336	100,0	73	21,7	248	73,8	15	4,5
IASI	2295	100,0	320	13,9	1696	73,9	279	12,2
MARAMURES	1047	100,0	246	23,5	750	71,6	51	4,9
MEHEDINTI	319	100,0	91	28,5	207	64,9	21	6,6
MURES	1056	100,0	217	20,5	761	72,1	78	7,4
NEAMT	944	100,0	180	19,1	704	74,6	60	6,4
OLT	565	100,0	108	19,1	435	77,0	22	3,9
PRAHOVA	1317	100,0	289	21,9	904	68,6	124	9,4
SALAJ	461	100,0	99	21,5	320	69,4	42	9,1
SATU MARE	739	100,0	122	16,5	536	72,5	81	11,0
SIBIU	1315	100,0	243	18,5	749	57,0	323	24,6
SUCEAVA	1058	100,0	179	16,9	795	75,1	84	7,9
TELEORMAN	472	100,0	100	21,2	352	74,6	20	4,2
TIMIS	2072	100,0	351	16,9	1573	75,9	148	7,1
TULCEA	461	100,0	88	19,1	330	71,6	43	9,3
VASLUI	430	100,0	90	20,9	326	75,8	14	3,3
VALCEA	650	100,0	120	18,5	487	74,9	43	6,6
VRANCEA	439	100,0	93	21,2	310	70,6	36	8,2
MUN. BUCURESTI	13154	100,0	1608	12,2	9856	74,9	1690	12,8
ILFOV	2027	100,0	355	17,5	1574	77,7	98	4,8

*) by effect of implementation of Law no. 314/2001, art.1 and art. 6

Table no.7

Number of incorporations in the trade registers by counties and business categories in the month of August 2011

County	Total		out of which:							
			PF	companies: 4946				RA	SC	APJ
				SNC	SCS	SRL	SA			
				No.	No.	No.	No.			
0	1	2	3	4	5	6	7	8	9	
Total ROMÂNIA	9012	100,0	4060	1	2	4896	47		2	4
ALBA	167	1,9	105			60	1			1
ARAD	224	2,5	102			120	2			
ARGES	238	2,6	114			124				
BACAU	223	2,5	145			77	1			
BIHOR	247	2,7	111			136				
BISTRITA-NASAUD	147	1,6	87			47	13			
BOTOSANI	87	1,0	55			32				
BRASOV	275	3,1	117			157	1			
BRAILA	128	1,4	79			48	1			
BUZAU	146	1,6	59			87				
CARAS-SEVERIN	101	1,1	45			56				
CALARASI	86	1,0	44			42				
CLUJ	406	4,5	185			219	2			
CONSTANTA	361	4,0	138			218	5			
COVASNA	83	0,9	55			28				
DAMBOVITA	172	1,9	111			61				
DOLJ	263	2,9	111			151	1			
GALATI	223	2,5	110			113				
GIURGIU	93	1,0	30			63				
GORJ	106	1,2	63			43				
HARGHITA	90	1,0	56			33				1
HUNEDOARA	174	1,9	84			90				
IALOMITA	73	0,8	36			37				
IASI	320	3,6	186		1	132	1			
MARAMURES	246	2,7	158	1		86	1			
MEHEDINTI	91	1,0	48			42	1			
MURES	217	2,4	113			104				
NEAMT	180	2,0	110			70				
OLT	108	1,2	57			51				
PRAHOVA	289	3,2	158			130	1			
SALAJ	99	1,1	53			46				
SATU MARE	122	1,4	51			71				
SIBIU	243	2,7	129			114				
SUCEAVA	179	2,0	91			88				
TELEORMAN	100	1,1	39			61				
TIMIS	351	3,9	144			205	2			
TULCEA	88	1,0	30			58				
VASLUI	90	1,0	60			30				
VALCEA	120	1,3	72			44			2	2
VRANCEA	93	1,0	50			43				
MUN. BUCURESTI	1608	17,8	394			1200	14			
ILFOV	355	3,9	75		1	279				

Table no.8

Number of incorporations in the trade registers by counties and capital sources in the month of August 2011

County	Total		out of which:						Rnking by: *	
			Private capital			State majority capital		Mixed capital (state+private)		
			out of which:			out of which:				
			PF	Companies	SC	APJ	RA	Companies		Companies
			No.	No.	No.		No.	No.		No.
0	1	2	3	4	5	6	7	8	9	
Total ROMÂNIA	9012	100,0	4060	4946	2	4				X
ALBA	167	1,9	105	61		1				22
ARAD	224	2,5	102	122						14
ARGES	238	2,6	114	124						13
BACAU	223	2,5	145	78						15
BIHOR	247	2,7	111	136						10
BISTRITA-NASAUD	147	1,6	87	60						23
BOTOSANI	87	1,0	55	32						39
BRASOV	275	3,1	117	158						8
BRAILA	128	1,4	79	49						25
BUZAU	146	1,6	59	87						24
CARAS-SEVERIN	101	1,1	45	56						30
CALARASI	86	1,0	44	42						40
CLUJ	406	4,5	185	221						2
CONSTANTA	361	4,0	138	223						3
COVASNA	83	0,9	55	28						41
DAMBOVITA	172	1,9	111	61						21
DOLJ	263	2,9	111	152						9
GALATI	223	2,5	110	113						16
GIURGIU	93	1,0	30	63						33
GORJ	106	1,2	63	43						29
HARGHITA	90	1,0	56	33		1				36
HUNEDOARA	174	1,9	84	90						20
IALOMITA	73	0,8	36	37						42
IASI	320	3,6	186	134						6
MARAMURES	246	2,7	158	88						11
MEHEDINTI	91	1,0	48	43						35
MURES	217	2,4	113	104						17
NEAMT	180	2,0	110	70						18
OLT	108	1,2	57	51						28
PRAHOVA	289	3,2	158	131						7
SALAJ	99	1,1	53	46						32
SATU MARE	122	1,4	51	71						26
SIBIU	243	2,7	129	114						12
SUCEAVA	179	2,0	91	88						19
TELEORMAN	100	1,1	39	61						31
TIMIS	351	3,9	144	207						5
TULCEA	88	1,0	30	58						38
VASLUI	90	1,0	60	30						37
VALCEA	120	1,3	72	44	2	2				27
VRANCEA	93	1,0	50	43						34
MUN. BUCURESTI	1608	17,8	394	1214						1
ILFOV	355	3,9	75	280						4

*) The total number of incorporations (col 1)

*** Less than 0,01%

Table no. 9

Number of incorporations in the trade registers by domains of activity and business categories in the month of August 2011

CAEN segment	Field of activity	Total		out of which:							
				PF	companies: 4946				RA	SC	APJ
		SNC	SCS		SRL	SA					
		No.	%	No.	No.	No.	No.	No.	No.	No.	
0	1	2	3	4	5	6	7	8	9	10	11
	Total ROMÂNIA	9012	100.0	4060	1	2	4896	47		2	4
1	Agriculture, hunting and related service activities	330	3.7	228			99	2			1
2	Forestry and logging	39	0.4	11			28				
3	Fishing and aquaculture	22	0.2	14			8				
5	Mining of hard and brown coal										
6	Extraction of crude petroleum and natural gas	1	0.0				1				
7	Mining of metal ores	1	0.0				1				
8	Other mining and quarrying	7	0.1				7				
9	Mining support service activities	1	0.0				1				
10	Manufacture of food products	114	1.3	29			82				3
11	Manufacture of beverages	12	0.1	9			3				
12	Manufacture of tobacco products										
13	Manufacture of textiles	16	0.2	10			6				
14	Manufacture of wearing apparel	52	0.6	22			30				
15	Tanning and dressing of leather; manufacture of luggage, handbags, saddlery, harness and footwear; dressing and dyeing of fur	12	0.1	4			8				
16	Manufacture of wood and of products of wood and cork, except furniture; manufacture of articles of straw and plaiting materials	50	0.6	19			31				
17	Manufacture of paper and paper products	4	0.0	2			2				
18	Printing and reproduction of recorded media	16	0.2	5			11				
19	Manufacture of coke and refined petroleum products	1	0.0				1				
20	Manufacture of chemicals and chemical products	7	0.1				7				
21	Manufacture of basic pharmaceutical products and pharmaceutical preparations										
22	Manufacture of rubber and plastic products	25	0.3	3			22				
23	Manufacture of other non-metallic mineral products	22	0.2	11			10	1			
24	Manufacture of basic metals	1	0.0				1				
25	Manufacture of fabricated metal products, except machinery and equipment	73	0.8	35			38				
26	Manufacture of computer, electronic and optical products	3	0.0			1	2				
27	Manufacture of electrical equipment	6	0.1	1			5				
28	Manufacture of machinery and equipment n.e.c.	6	0.1				6				
29	Manufacture of motor vehicles, trailers and semi-trailers	4	0.0				4				
30	Manufacture of other transport equipment	4	0.0	1			3				
31	Manufacture of furniture	21	0.2	5			15			1	
32	Other manufacturing	30	0.3	21			9				
33	Repair and installation of machinery and equipment	36	0.4	13			22	1			
35	Electricity, gas, steam and air conditioning supply	91	1.0				81	10			
36	Water collection, treatment and supply	2	0.0				2				
37	Sewerage										
38	Waste collection, treatment and disposal activities; materials recovery	12	0.1	12							
39	Remediation activities and other waste management services										
41	Construction of buildings	503	5.6	503							
42	Civil engineering	6	0.1	6							
43	Specialised construction activities	836	9.3	836							
45	Wholesale and retail trade and repair of motor vehicles and motorcycles	116	1.3	116							
46	Wholesale trade, except of motor vehicles and motorcycles	200	2.2	200							
47	Retail trade, except of motor vehicles and motorcycles	1151	12.8	1151							
49	Land transport and transport via pipelines	180	2.0	180							
50	Water transport	2	0.0	2							

Table no. 10

Number of incorporated trading companies and the value of the subscribed share capital, by counties, in the month of August 2011

County	Total registered companies		Subscribed capital		Average subscribed capital on company
	No.	%	thousand Lei	%	thousand Lei
0	1	2	3	4	5
Total ROMÂNIA	4946	100,0	128870,4	100,0	26,2
ALBA	61	1,2	1802,5	1,4	29,5
ARAD	122	2,5	606,9	0,5	5,0
ARGES	124	2,5	146,9	0,1	1,2
BACAU	78	1,6	56,3	0,0	0,7
BIHOR	136	2,7	508,8	0,4	3,8
BISTRITA-NASAUD	60	1,2	10842,7	8,4	180,7
BOTOSANI	32	0,6	23,9	0,0	0,7
BRASOV	158	3,2	3100,6	2,4	19,7
BRAILA	49	1,0	10,9	***	0,2
BUZAU	87	1,8	169,4	0,1	1,9
CARAS-SEVERIN	56	1,1	559,8	0,4	10,0
CALARASI	42	0,8	60,1	0,0	1,4
CLUJ	221	4,5	3041,7	2,4	13,8
CONSTANTA	223	4,5	27700,2	21,5	125,9
COVASNA	28	0,6	18,7	0,0	0,7
DAMBOVITA	61	1,2	528,4	0,4	8,7
DOLJ	152	3,1	149,0	0,1	1,0
GALATI	113	2,3	96,6	0,1	0,9
GIURGIU	63	1,3	57,3	0,0	0,9
GORJ	43	0,9	15,1	0,0	0,4
HARGHITA	33	0,7	10,0	***	0,3
HUNEDOARA	90	1,8	49,6	0,0	0,6
IALOMITA	37	0,7	304,0	0,2	8,2
IASI	134	2,7	1545,0	1,2	11,7
MARAMURES	88	1,8	455,6	0,4	5,2
MEHEDINTI	43	0,9	269,9	0,2	6,3
MURES	104	2,1	636,9	0,5	6,1
NEAMT	70	1,4	378,3	0,3	5,4
OLT	51	1,0	14,1	0,0	0,3
PRAHOVA	131	2,6	16681,3	12,9	128,3
SALAJ	46	0,9	3866,1	3,0	84,0
SATU MARE	71	1,4	15,0	0,0	0,2
SIBIU	114	2,3	1288,6	1,0	11,3
SUCEAVA	88	1,8	53,2	0,0	0,6
TELEORMAN	61	1,2	25,6	0,0	0,4
TIMIS	207	4,2	509,7	0,4	2,5
TULCEA	58	1,2	38,6	0,0	0,7
VASLUI	30	0,6	6,3	***	0,2
VALCEA	44	0,9	65,3	0,1	1,5
VRANCEA	43	0,9	12,0	***	0,3
MUN. BUCURESTI	1214	24,5	28889,8	22,4	24,0
ILFOV	280	5,7	24259,8	18,8	86,6

Note: The average does not include filials because according to the Law no.31/1990 they are not juridical persons

**** Less than 0,01%*

Table no. 11

Number of incorporated trading companies and the value of the subscribed share capital by legal forms, in the month of August 2011

Company type	Total registered companies		Subscribed capital		Average subscribed capital on company
	No.	%	thousand Lei	%	thousand Lei
0	1	2	3	4	5
Total ROMÂNIA	4946	100,0	128870,4	100,0	26,2
SNC	1	0,0	0,2	***	
SCS	2	0,0	111,6	0,1	
SA	47	1,0	58494,2	45,4	2017,0
SRL	4896	99,0	70264,3	54,5	14,4

Note: The average does not include filials because according to the Law no.31/1990 they are not juridical persons

*** Less than 0,01%

Diagram no.5

