



MINISTRY OF JUSTICE

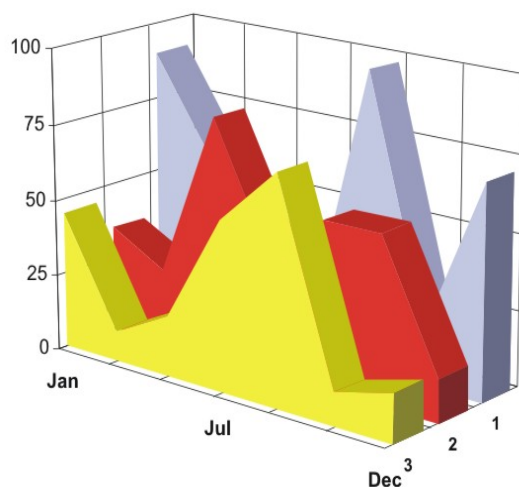
THE NATIONAL TRADE REGISTER OFFICE

București, Bd. Unirii nr. 74, Bl. J3b, tronson II+III, sector 3; Telefon: +40 21 316.08.04, 316.08.10; Fax: +40 21 316.08.03; Cod poștal: 030837
Website: www.onrc.ro; E-mail: onrc@onrc.ro; Cod identificare Fiscală: 14942091

OPERATIONS IN THE CENTRAL TRADE REGISTER

STATISTIC SYNTHESIS

OF RECORDS IN THE CENTRAL TRADE REGISTER - 31th July 2011 - provisional data -



- ISSUE No. 236 -

MINISTRY OF JUSTICE

THE NATIONAL TRADE REGISTER OFFICE

- Operations such as incorporation of trading companies, submission of changes, and strike-off are carried out based on Law No.26/1990, as republished, Law No.31/1990, as republished and on the Methodological Norms no. P/608/1998.
- This work reflects the evolution of the operations with the Trade Register Office attached to Bucharest Law Court and the Trade Register Offices attached to County Law Courts.
- The data contained in the Central Trade Register refer to operations for which law sets out the obligation of being registered in the trade registers kept by the 42 trade register offices attached to law courts.

• The content of this publication shall not be reproduced, partly or entirely, in original or modified form, and shall not be stored in a recovery system and shall not be transmitted in any form or by any means without prior written authorization of the Ministry of Justice – The National Trade Register Office.

• The content of this publication December be used in articles, studies, books, as supporting or explanatory data only by clearly and accurately indicating the source.

CONTENTS

Page

1 Definitions	1
2.1 Data related to the period December 1990 – July 2011	3
Table no. 1 – Operations performed in the trade registers by categories of registration during December 1990 –July 2011, total by country and by counties, shares of counties in the total by country	3
Table no. 2 – Operations performed in the trade registers by categories of registration during 1990 –July 2011, total by country and counties, share of categories of operations in the total of each county	4
Table no. 3 – Number and structure of incorporations in the trade registers during 1990-July 2011	5
Chart no. 1 – Structure by years of incorporations in the trade register	
Table no. 4 – Number of incorporations in the trade registers by counties and capital sources during 1990 - July 2011	6
Table no. 5 – Number of incorporations in the trade registers by counties and business categories during 1990 –July 2011	7
2.2 Data related to July 2011	8
Table no. 6 – Operations performed in the trade registers by counties and categories of registrations in the month of July 2011	8
Table no. 7 – Number of incorporations in the trade registers by counties and capital sources in the month of July 2011	9
Table no. 8 – Number of incorporations in the trade registers by counties and business categories in the month of July 2011	10
Table no. 9 –Number of incorporations in the trade registers by domains of activity and business categories in the month of July 2011	11-12
Table no. 10 – Number of incorporated trading companies and the value of subscribed share capital, by counties, in the month of July 2011	13
Table no. 11– Number of incorporated trading companies and the value of subscribed share capital by legal forms, in the month of July 2011	14
Chart no. 5 – Average value of subscribed share capital by types of trading companies in the month of July 2011	14

Definitions

The Trade Register Office was established based on Law No. 26/1990, as republished and subsequently amended and supplemented, operates as an active institution since 1990 and is twofold structured:

- at national level, represented by the National Trade Register Office organized under the authority of the Ministry of Justice
- at local level, represented by the 42 Trade Register Offices attached to Law Courts, organized under the subordination of the National Trade Register Office

Categories of persons liable to registration in the trade register:

- natural persons: authorized natural persons, individual enterprises and family enterprises currently carrying on trading activities;

- legal persons represented by: Trading Companies, National Societies and Companies, National R&D Institutes, Autonomous Administrations, Co-operative Societies, Agricultural Co-operatives, Co-operative Organizations, Economic Interest Groupings, European Economic Interest Groupings, European Societies, European Co-operative Societies, branches of trading companies with legal establishment, operation and incorporation regime of trading company legal form under which they were incorporated.

- **Terms used in tables and charts**

- **Number of companies**, depending on the table, represents the number of trading companies incorporated during the reference period, the number of trading companies struck-off from the trade register. The following forms of organization are included: limited liability companies, joint-stock companies, limited partnerships by share, limited partnerships, general partnerships, and branches thereof.

- **Value of subscribed share capital:**

- **total, expressed in national currency:** the share capital value resulted by adding up the subscribed values (in cash and in kind) in national currency (lei)

- **Regions of economic development:**

<i>North-East:</i>	Suceava, Botoșani, Neamț, Iași, Bacău, Vaslui.
<i>South-East:</i>	Vrancea, Galați, Buzău, Brăila, Tulcea, Constanța.
<i>South-Muntenia:</i>	Argeș, Dâmbovița, Prahova, Teleorman, Giurgiu, Călărași, Ialomița.
<i>South-West Oltenia:</i>	Gorj, Vâlcea, Dolj, Mehedinți, Olt.
<i>West:</i>	Arad, Caraș-Severin, Hunedoara, Timiș.
<i>North-West:</i>	Bihor, Bistrița, Cluj, Satu Mare, Sălaj, Maramureș.
<i>Center:</i>	Alba, Brașov, Covasna, Harghita, Mureș, Sibiu.
<i>Bucharest-Ilfov:</i>	București, Ilfov.

NACE Code – The classification of economic activities in the national economy was approved by GO No. 656/1997, amended by Order No 601/2002 and Order no. 337/2007 of the President of the National Institute of Statistics, and complies with the international classification used in statistic reports and official documents. The activities are ranked by the harmonization principle, by sections, divisions, groups and classes.

Abbreviations

- **PF** - Natural Person; the following forms of organization are included in this category: natural persons and family associations registered until 25.04.2008, authorized natural persons, individual enterprises and family enterprises.
- **SNC** - General Partnership
- **SCS** - Limited Partnership
- **SCA** - Limited Partnership by Share
- **SA** - Joint-Stock Company
- **SRL** - Limited Liability Company
- **RA** - Autonomous Administration
- **APJ** - Other legal persons having the obligation to register in the trade register: National R&D Institutes, Economic Interest Groupings, European Economic Interest Groupings, European Societies, European Co-operative Societies, Agricultural Co-operatives, Co-operative Organizations.

Sources of Information:

The integrated IT system of the trade register is designed by The National Trade Register Office in compliance with the provisions of the related legislation in force. The source of information consists of the trade registers organized in computerized system, kept by the trade register offices attached to law courts.

Table no. 1

**Operations performed in the trade registers by categories of registration during
December 1990 – July 2011, total by country and by counties, share of counties in
the total by country**

Counties	Total of registered operations		out of which :					
			Registered companies		Changes in statutory documents		Strike off companies	
	No.	%	No.	%	No.	%	No.	%
0	1	2	3	4	5	6	7	8
Total ROMÂNIA	15051154	100,0	2174880	100,0	12024821	100,0	851453	100,0
ALBA	228528	1,5	37676	1,7	178671	1,5	12181	1,4
ARAD	355306	2,4	52873	2,4	280761	2,3	21672	2,5
ARGES	363779	2,4	56012	2,6	290724	2,4	17043	2,0
BACAU	348508	2,3	54105	2,5	270939	2,3	23464	2,8
BIHOR	456366	3,0	67963	3,1	365099	3,0	23304	2,7
BISTRITA-NASAUD	183505	1,2	28789	1,3	143887	1,2	10829	1,3
BOTOSANI	141656	0,9	26794	1,2	103464	0,9	11398	1,3
BRASOV	581409	3,9	66658	3,1	491452	4,1	23299	2,7
BRAILA	229455	1,5	30442	1,4	189787	1,6	9226	1,1
BUZAU	261553	1,7	38965	1,8	205458	1,7	17130	2,0
CARAS-SEVERIN	173676	1,2	26333	1,2	134803	1,1	12540	1,5
CALARASI	137238	0,9	21917	1,0	105955	0,9	9366	1,1
CLUJ	665529	4,4	99712	4,6	533054	4,4	32763	3,8
CONSTANTA	647279	4,3	89259	4,1	520429	4,3	37591	4,4
COVASNA	129048	0,9	18549	0,9	102932	0,9	7567	0,9
DAMBOVITA	216533	1,4	41175	1,9	155963	1,3	19395	2,3
DOLJ	408049	2,7	57953	2,7	326874	2,7	23222	2,7
GALATI	382713	2,5	51755	2,4	309185	2,6	21773	2,6
GIURGIU	120143	0,8	18490	0,9	94078	0,8	7575	0,9
GORJ	227795	1,5	25917	1,2	191580	1,6	10298	1,2
HARGHITA	225172	1,5	33915	1,6	179855	1,5	11402	1,3
HUNEDOARA	301694	2,0	44412	2,0	238819	2,0	18463	2,2
IALOMITA	138171	0,9	20109	0,9	108105	0,9	9957	1,2
IASI	499176	3,3	72614	3,3	401332	3,3	25230	3,0
MARAMURES	320852	2,1	54792	2,5	242103	2,0	23957	2,8
MEHEDINTI	153893	1,0	24656	1,1	118371	1,0	10866	1,3
MURES	413411	2,7	53772	2,5	337511	2,8	22128	2,6
NEAMT	317778	2,1	45894	2,1	250989	2,1	20895	2,5
OLT	179458	1,2	30451	1,4	135965	1,1	13042	1,5
PRAHOVA	506523	3,4	71999	3,3	405641	3,4	28883	3,4
SALAJ	135879	0,9	22260	1,0	104618	0,9	9001	1,1
SATU MARE	236161	1,6	37229	1,7	182954	1,5	15978	1,9
SIBIU	327911	2,2	42673	2,0	269258	2,2	15980	1,9
SUCEAVA	354472	2,4	53868	2,5	274748	2,3	25856	3,0
TELEORMAN	160746	1,1	25533	1,2	125804	1,0	9409	1,1
TIMIS	504174	3,3	76730	3,5	401289	3,3	26155	3,1
TULCEA	176993	1,2	22095	1,0	145203	1,2	9695	1,1
VASLUI	186337	1,2	26866	1,2	146098	1,2	13373	1,6
VALCEA	230751	1,5	35055	1,6	179588	1,5	16108	1,9
VRANCEA	184413	1,2	27005	1,2	148773	1,2	8635	1,0
MUN. BUCURESTI	2987444	19,8	398052	18,3	2435925	20,3	153467	18,0
ILFOV	251676	1,7	43562	2,0	196777	1,6	11337	1,3

*** Less 0,01%

Table no. 2

Operations performed in the trade registers during December 1990 – July 2011, total by country and counties, share of categories of operations in the total of each county

Counties	Total of registered operations		out of which :					
			Registered companies		Changes in statutory documents		Strike off companies	
	No.	%	No.	%	No.	%	No.	%
0	1	2	3	4	5	6	7	8
Total ROMÂNIA	15051154	100,0	2174880	14,4	12024821	79,9	851453	5,7
ALBA	228528	100,0	37676	16,5	178671	78,2	12181	5,3
ARAD	355306	100,0	52873	14,9	280761	79,0	21672	6,1
ARGES	363779	100,0	56012	15,4	290724	79,9	17043	4,7
BACAU	348508	100,0	54105	15,5	270939	77,7	23464	6,7
BIHOR	456366	100,0	67963	14,9	365099	80,0	23304	5,1
BISTRITA-NASAUD	183505	100,0	28789	15,7	143887	78,4	10829	5,9
BOTOSANI	141656	100,0	26794	18,9	103464	73,0	11398	8,0
BRASOV	581409	100,0	66658	11,5	491452	84,5	23299	4,0
BRAILA	229455	100,0	30442	13,3	189787	82,7	9226	4,0
BUZAU	261553	100,0	38965	14,9	205458	78,6	17130	6,5
CARAS-SEVERIN	173676	100,0	26333	15,2	134803	77,6	12540	7,2
CALARASI	137238	100,0	21917	16,0	105955	77,2	9366	6,8
CLUJ	665529	100,0	99712	15,0	533054	80,1	32763	4,9
CONSTANTA	647279	100,0	89259	13,8	520429	80,4	37591	5,8
COVASNA	129048	100,0	18549	14,4	102932	79,8	7567	5,9
DAMBOVITA	216533	100,0	41175	19,0	155963	72,0	19395	9,0
DOLJ	408049	100,0	57953	14,2	326874	80,1	23222	5,7
GALATI	382713	100,0	51755	13,5	309185	80,8	21773	5,7
GIURGIU	120143	100,0	18490	15,4	94078	78,3	7575	6,3
GORJ	227795	100,0	25917	11,4	191580	84,1	10298	4,5
HARGHITA	225172	100,0	33915	15,1	179855	79,9	11402	5,1
HUNEDOARA	301694	100,0	44412	14,7	238819	79,2	18463	6,1
IALOMITA	138171	100,0	20109	14,6	108105	78,2	9957	7,2
IASI	499176	100,0	72614	14,5	401332	80,4	25230	5,1
MARAMURES	320852	100,0	54792	17,1	242103	75,5	23957	7,5
MEHEDINTI	153893	100,0	24656	16,0	118371	76,9	10866	7,1
MURES	413411	100,0	53772	13,0	337511	81,6	22128	5,4
NEAMT	317778	100,0	45894	14,4	250989	79,0	20895	6,6
OLT	179458	100,0	30451	17,0	135965	75,8	13042	7,3
PRAHOVA	506523	100,0	71999	14,2	405641	80,1	28883	5,7
SALAJ	135879	100,0	22260	16,4	104618	77,0	9001	6,6
SATU MARE	236161	100,0	37229	15,8	182954	77,5	15978	6,8
SIBIU	327911	100,0	42673	13,0	269258	82,1	15980	4,9
SUCEAVA	354472	100,0	53868	15,2	274748	77,5	25856	7,3
TELEORMAN	160746	100,0	25533	15,9	125804	78,3	9409	5,9
TIMIS	504174	100,0	76730	15,2	401289	79,6	26155	5,2
TULCEA	176993	100,0	22095	12,5	145203	82,0	9695	5,5
VASLUI	186337	100,0	26866	14,4	146098	78,4	13373	7,2
VALCEA	230751	100,0	35055	15,2	179588	77,8	16108	7,0
VRANCEA	184413	100,0	27005	14,6	148773	80,7	8635	4,7
MUN. BUCURESTI	2987444	100,0	398052	13,3	2435925	81,5	153467	5,1
ILFOV	251676	100,0	43562	17,3	196777	78,2	11337	4,5

Table no.3

Number and structure of incorporations in the trade registers during December 1990 - July 2011

Period (year, month)	Registered companies		Percentage	
	No.	%	%	
0	1	2	3	
Total, july 2010, out of which	2174880	100,00		
Period 1990 - 2000	849469	38,9		
Year 2001	61265	2,8		
Year 2002	84780	3,9		
Year 2003	123582	5,7		
Year 2004	144284	6,6		
Year 2005	159464	7,3		
Year 2006	135371	6,2		
Year 2007	144728	6,7		
Year 2008	144173	6,6		
Year 2009	116031	5,3		
Year 2010	122831	5,6		
Year 2011 (I - XII) out of which :	88904	4,1	100,0	
January	7783			8,8
February	10877			12,2
March	14482			16,3
April	10436			11,7
May	13114			14,8
June	15750			17,7
July	16462			18,5

Note: Column 2 reveals the annual structure of incorporations; column 3 reveals the structure by months during the current year.

Diagram no.1

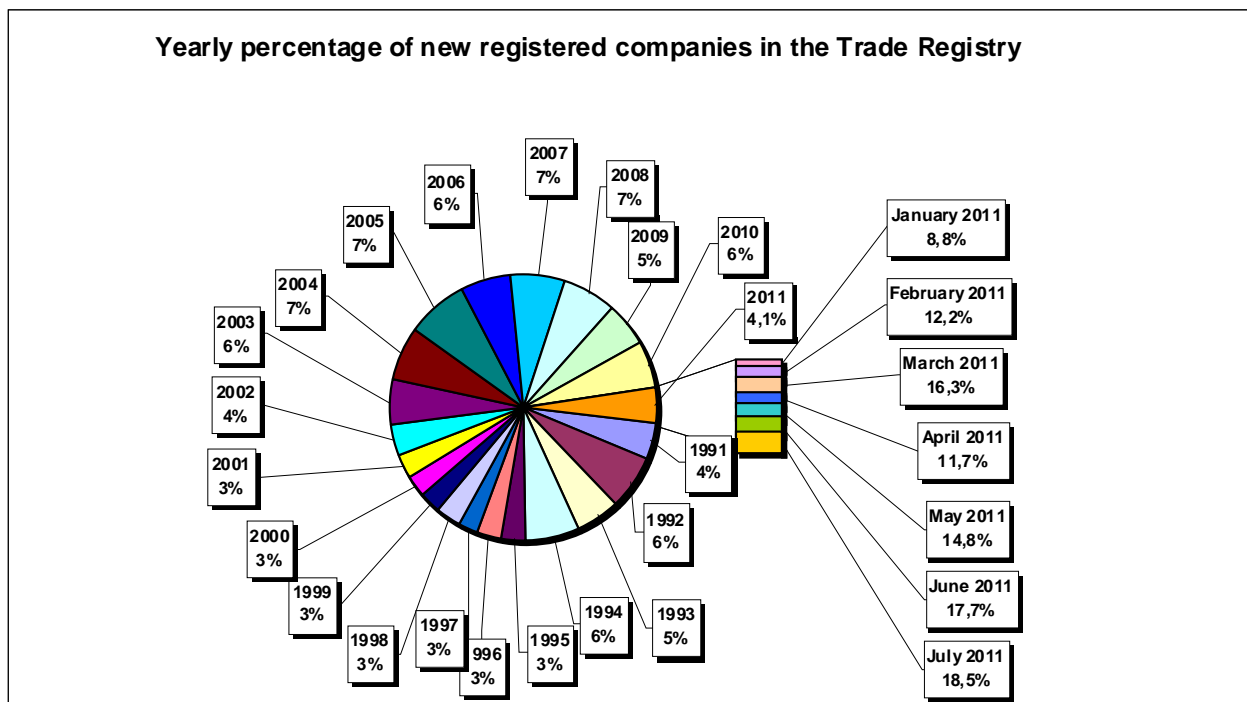


Table no. 4

**Number of incorporations in the trade registers by counties and capital sources during
December 1990 - July 2011**

Counties	Total		out of which:						Ranking by: *	
			Private capital				State majority capital			Mixed capital (state+private)
			out of which:				out of which:			
			PF	Companies	SC	APJ	RA	Companies		Companies
No.	%	No.	No.	No.	No.	No.	No.	No.		
0	1	2	3	4	5	6	6	7	8	9
Total ROMANIA	2174880	100,0	660065	1494525	2040	5768	1395	2418	8676	X
ALBA	37676	1,7	16359	20878	36	148	38	47	170	23
ARAD	52874	2,4	21461	30774	60	171	30	43	336	15
ARGES	56011	2,6	19923	35647	48	177	31	32	153	10
BACAU	54105	2,5	20216	33270	151	162	35	46	226	12
BIHOR	67963	3,1	20669	46667	63	153	40	62	309	7
BISTRITA-NASAUD	28789	1,3	12487	15989	46	100	29	29	109	29
BOTOSANI	26794	1,2	13460	12793	40	185	21	176	119	32
BRASOV	66692	3,1	17022	49178	58	126	49	87	172	8
BRAILA	30408	1,4	9782	20239	42	102	30	46	167	28
BUZAU	38965	1,8	12860	25704	46	154	28	42	131	22
CARAS-SEVERIN	26333	1,2	9987	15954	42	108	39	65	138	33
CALARASI	21917	1,0	7563	14045	22	92	18	77	100	39
CLUJ	99712	4,6	29186	69944	62	162	52	42	264	2
CONSTANTA	89259	4,1	20447	67868	87	212	51	51	543	3
COVASNA	18549	0,9	7585	10687	41	71	24	32	109	41
DAMBOVITA	41175	1,9	20195	20546	32	141	30	75	156	21
DOLJ	57953	2,7	15272	42168	39	172	40	58	204	9
GALATI	51755	2,4	13881	37475	35	140	30	51	143	16
GIURGIU	18491	0,9	4964	13184	15	84	23	110	111	42
GORJ	25916	1,2	7953	17519	26	184	51	83	100	34
HARGHITA	33915	1,6	15741	17716	64	95	24	43	232	26
HUNEDOARA	44412	2,0	13928	29941	33	85	42	96	287	18
IALOMITA	20109	0,9	8137	11710	27	83	15	46	91	40
IASI	72614	3,3	25175	46729	87	170	34	77	344	5
MARAMURES	54792	2,5	23844	30573	44	129	38	41	124	11
MEHEDINTI	24656	1,1	9718	14685	19	89	19	27	99	36
MURES	53772	2,5	21814	31497	68	160	30	34	169	14
NEAMT	45894	2,1	18299	27135	66	168	30	30	166	17
OLT	30451	1,4	12735	17310	27	166	26	64	123	27
PRAHOVA	71999	3,3	24836	46514	67	184	52	74	272	6
SALAJ	22260	1,0	9890	12107	41	111	19	28	64	37
SATU MARE	37229	1,7	14072	22818	41	101	21	42	135	24
SIBIU	42673	2,0	13187	29022	37	121	35	110	161	20
SUCEAVA	53868	2,5	26763	26495	73	218	31	67	221	13
TELEORMAN	25533	1,2	10028	15056	33	165	21	46	184	35
TIMIS	76730	3,5	15719	60329	69	155	38	69	351	4
TULCEA	22095	1,0	8657	13062	36	67	19	42	212	38
VASLUI	26866	1,2	13669	12866	22	116	16	41	136	31
VALCEA	35055	1,6	15309	19314	64	171	42	40	115	25
VRANCEA	27005	1,2	9736	16960	35	115	17	28	114	30
MUN. BUCURESTI	398052	18,3	41043	355425	64	157	116	106	1142	1
ILFOV	43562	2,0	6493	36732	31	98	21	13	174	19

*) The total number of incorporations (col 1)

Table no. 5

Number of incorporations in the trade registers by counties and business categories during December 1990 – July 2011

County	Total		out of which:							
			PF	companies: 1505619				RA	SC	APJ
	SNC	SCS		SRL	SA					
	No.	%	No.	No.	No.	No.	No.	No.	No.	
0	1	2	3	4	5	6	7	8	9	10
Total ROMÂNIA	2174880	100,0	660065	32682	1624	1437148	34158	1395	2040	5768
ALBA	37676	1,7	16359	890	11	19619	575	38	36	148
ARAD	52873	2,4	21461	54	13	30370	714	30	60	171
ARGES	56012	2,6	19923	107	15	34865	846	31	48	177
BACAU	54105	2,5	20216	1299	4	31480	758	35	151	162
BIHOR	67963	3,1	20669	127	48	45925	938	40	63	153
BISTRITA-NASAUD	28789	1,3	12487	146	23	15535	423	29	46	100
BOTOSANI	26794	1,2	13460	468	1	12156	463	21	40	185
BRASOV	66658	3,1	17022	239	21	48238	905	49	58	126
BRAILA	30442	1,4	9782	376	12	19556	542	30	42	102
BUZAU	38965	1,8	12860	3747	46	21488	596	28	46	154
CARAS-SEVERIN	26333	1,2	9987	118	9	15553	477	39	42	108
CALARASI	21917	1,0	7563	609	3	13244	366	18	22	92
CLUJ	99712	4,6	29186	2112	21	66745	1372	52	62	162
CONSTANTA	89259	4,1	20447	311	23	66592	1536	51	87	212
COVASNA	18549	0,9	7585	148	4	10362	314	24	41	71
DAMBOVITA	41175	1,9	20195	60	8	20201	508	30	32	141
DOLJ	57953	2,7	15272	1560	8	39937	925	40	39	172
GALATI	51755	2,4	13881	1574	6	35216	873	30	35	140
GIURGIU	18490	0,9	4964	35	8	13024	337	23	15	84
GORJ	25917	1,2	7953	29	1	17165	508	51	26	184
HARGHITA	33915	1,6	15741	62	7	17417	505	24	64	95
HUNEDOARA	44412	2,0	13928	1166	98	28361	699	42	33	85
IALOMITA	20109	0,9	8137	269	12	11211	355	15	27	83
IASI	72614	3,3	25175	508	111	45480	1049	34	87	170
MARAMURES	54792	2,5	23844	1927	23	28172	615	38	44	129
MEHEDINTI	24656	1,1	9718	427	3	14036	345	19	19	89
MURES	53772	2,5	21814	37	34	30936	693	30	68	160
NEAMT	45894	2,1	18299	3293	30	23321	687	30	66	168
OLT	30451	1,4	12735	1611	1	15379	506	26	27	166
PRAHOVA	71999	3,3	24836	3122	15	42778	945	52	67	184
SALAJ	22260	1,0	9890	600	4	11294	301	19	41	111
SATU MARE	37229	1,7	14072	283	10	22217	484	21	41	101
SIBIU	42673	2,0	13187	778	49	27776	690	35	37	121
SUCEAVA	53868	2,5	26763	438	8	25732	605	31	73	218
TELEORMAN	25533	1,2	10028	272	399	14178	437	21	33	165
TIMIS	76730	3,5	15719	617	35	58797	1300	38	69	155
TULCEA	22095	1,0	8657	1363	114	11353	486	19	36	67
VASLUI	26866	1,2	13669	90	13	12513	427	16	22	116
VALCEA	35055	1,6	15309	364	6	18587	512	42	64	171
VRANCEA	27005	1,2	9736	357	10	16266	469	17	35	115
MUN. BUCURESTI	398052	18,3	41043	1039	323	347943	7367	116	64	157
ILFOV	43562	2,0	6493	50	34	36130	705	21	31	98

Table no. 6

Operations performed in the trade registers by counties and categories of registration in the month of July 2011

County	Total of operations carried on		out of which:					
			New incorporations		Changes in statutory documents		Strike off companies	
	No.	%	No.	%	No.	%	No.	%
0	1	2	3	4	5	6	7	8
Total ROMÂNIA	66330	100,0	16462	24,8	43764	66,0	6104	9,2
ALBA	1586	100,0	1043	65,8	481	30,3	62	3,9
ARAD	1538	100,0	398	25,9	914	59,4	226	14,7
ARGES	1628	100,0	468	28,7	1002	61,5	158	9,7
BACAU	1287	100,0	338	26,3	778	60,5	171	13,3
BIHOR	1911	100,0	524	27,4	1190	62,3	197	10,3
BISTRITA-NASAUD	1321	100,0	703	53,2	554	41,9	64	4,8
BOTOSANI	586	100,0	185	31,6	324	55,3	77	13,1
BRASOV	1692	100,0	300	17,7	1191	70,4	201	11,9
BRAILA	649	100,0	169	26,0	404	62,2	76	11,7
BUZAU	1281	100,0	242	18,9	902	70,4	137	10,7
CARAS-SEVERIN	691	100,0	362	52,4	278	40,2	51	7,4
CALARASI	516	100,0	131	25,4	344	66,7	41	7,9
CLUJ	2803	100,0	748	26,7	1815	64,8	240	8,6
CONSTANTA	3414	100,0	539	15,8	2636	77,2	239	7,0
COVASNA	347	100,0	104	30,0	213	61,4	30	8,6
DAMBOVITA	1095	100,0	476	43,5	520	47,5	99	9,0
DOLJ	2143	100,0	516	24,1	1397	65,2	230	10,7
GALATI	1892	100,0	347	18,3	1346	71,1	199	10,5
GIURGIU	788	100,0	114	14,5	642	81,5	32	4,1
GORJ	681	100,0	254	37,3	363	53,3	64	9,4
HARGHITA	812	100,0	276	34,0	457	56,3	79	9,7
HUNEDOARA	1270	100,0	379	29,8	824	64,9	67	5,3
IALOMITA	349	100,0	73	20,9	251	71,9	25	7,2
IASI	2463	100,0	489	19,9	1706	69,3	268	10,9
MARAMURES	1751	100,0	584	33,4	1043	59,6	124	7,1
MEHEDINTI	649	100,0	337	51,9	262	40,4	50	7,7
MURES	1259	100,0	285	22,6	813	64,6	161	12,8
NEAMT	881	100,0	206	23,4	628	71,3	47	5,3
OLT	760	100,0	414	54,5	293	38,6	53	7,0
PRAHOVA	1650	100,0	336	20,4	1087	65,9	227	13,8
SALAJ	904	100,0	306	33,8	477	52,8	121	13,4
SATU MARE	1102	100,0	380	34,5	629	57,1	93	8,4
SIBIU	1453	100,0	265	18,2	959	66,0	229	15,8
SUCEAVA	1439	100,0	511	35,5	848	58,9	80	5,6
TELEORMAN	659	100,0	266	40,4	347	52,7	46	7,0
TIMIS	2066	100,0	416	20,1	1487	72,0	163	7,9
TULCEA	663	100,0	113	17,0	490	73,9	60	9,0
VASLUI	729	100,0	353	48,4	290	39,8	86	11,8
VALCEA	898	100,0	230	25,6	583	64,9	85	9,5
VRANCEA	866	100,0	259	29,9	490	56,6	117	13,5
MUN. BUCURESTI	13904	100,0	1648	11,9	11036	79,4	1220	8,8
ILFOV	1954	100,0	375	19,2	1470	75,2	109	5,6

*) by effect of implementation of Law no. 314/2001, art.1 and art. 6

Table no.7

Number of incorporations in the trade registers by counties and business categories in the month of July 2011

County	Total		out of which:						RA	SC	APJ
			PF	companies: 4885							
	SNC	SCS		SRL	SA						
	No.	%	No.	No.	No.	No.	No.	No.			
0	1	2	3	4	5	6	7	8	9		
Total ROMÂNIA	16462	100,0	11570			4861	24		1	6	
ALBA	1043	6,3	985			58					
ARAD	398	2,4	272			124	2				
ARGES	468	2,8	358			110					
BACAU	338	2,1	242			96					
BIHOR	524	3,2	381			143					
BISTRITA-NASAUD	703	4,3	641			62					
BOTOSANI	185	1,1	159			26					
BRASOV	300	1,8	172			128					
BRAILA	169	1,0	109			59	1				
BUZAU	242	1,5	166			76					
CARAS-SEVERIN	362	2,2	315			46	1				
CALARASI	131	0,8	78			52	1				
CLUJ	748	4,5	474			273				1	
CONSTANTA	539	3,3	326			213					
COVASNA	104	0,6	72			32					
DAMBOVITA	476	2,9	411			65					
DOLJ	516	3,1	357			159					
GALATI	347	2,1	217			130					
GIURGIU	114	0,7	56			57	1				
GORJ	254	1,5	200			54					
HARGHITA	276	1,7	245			31					
HUNEDOARA	379	2,3	279			99	1				
IALOMITA	73	0,4	43			30					
IASI	489	3,0	342			146	1				
MARAMURES	584	3,5	522			60	1		1		
MEHEDINTI	337	2,0	297			40					
MURES	285	1,7	215			68	2				
NEAMT	206	1,3	144			60				2	
OLT	414	2,5	352			61	1				
PRAHOVA	336	2,0	201			135					
SALAJ	306	1,9	265			41					
SATU MARE	380	2,3	336			43				1	
SIBIU	265	1,6	180			85					
SUCEAVA	511	3,1	430			81					
TELEORMAN	266	1,6	223			43					
TIMIS	416	2,5	210			205	1				
TULCEA	113	0,7	64			49					
VASLUI	353	2,1	320			31				2	
VALCEA	230	1,4	186			44					
VRANCEA	259	1,6	224			35					
MUN. BUCURESTI	1648	10,0	411			1227	10				
ILFOV	375	2,3	90			284	1				

Table no.8

Number of incorporations in the trade registers by counties and capital sources in the month of July 2011

County	Total		out of which:						Rnking by: *	
			Private capital			State majority capital		Mixed capital (state+private)		
			out of which:			out of which:		Companies		
			PF	Companies	SC	APJ	RA	Companies		Companies
No.	%	No.	No.	No.		No.	No.	No.		
0	1	2	3	4	5	6	7	8	9	
Total ROMÂNIA	16462	100,0	11570	4884	1	6		1		X
ALBA	1043	6,3	985	58						2
ARAD	398	2,4	272	126						15
ARGES	468	2,8	358	110						12
BACAU	338	2,1	242	96						22
BIHOR	524	3,2	381	143						7
BISTRITA-NASAUD	703	4,3	641	62						4
BOTOSANI	185	1,1	159	26						36
BRASOV	300	1,8	172	128						26
BRAILA	169	1,0	109	60						37
BUZAU	242	1,5	166	76						33
CARAS-SEVERIN	362	2,2	315	47						19
CALARASI	131	0,8	78	53						38
CLUJ	748	4,5	474	273		1				3
CONSTANTA	539	3,3	326	213						6
COVASNA	104	0,6	72	32						41
DAMBOVITA	476	2,9	411	65						11
DOLJ	516	3,1	357	159						8
GALATI	347	2,1	217	130						21
GIURGIU	114	0,7	56	58						39
GORJ	254	1,5	200	54						32
HARGHITA	276	1,7	245	31						28
HUNEDOARA	379	2,3	279	99				1		17
IALOMITA	73	0,4	43	30						42
IASI	489	3,0	342	147						10
MARAMURES	584	3,5	522	61	1					5
MEHEDINTI	337	2,0	297	40						23
MURES	285	1,7	215	70						27
NEAMT	206	1,3	144	60		2				35
OLT	414	2,5	352	62						14
PRAHOVA	336	2,0	201	135						24
SALAJ	306	1,9	265	41						25
SATU MARE	380	2,3	336	43		1				16
SIBIU	265	1,6	180	85						30
SUCEAVA	511	3,1	430	81						9
TELEORMAN	266	1,6	223	43						29
TIMIS	416	2,5	210	206						13
TULCEA	113	0,7	64	49						40
VASLUI	353	2,1	320	31		2				20
VALCEA	230	1,4	186	44						34
VRANCEA	259	1,6	224	35						31
MUN. BUCURESTI	1648	10,0	411	1237						1
ILFOV	375	2,3	90	285						18

*) The total number of incorporations (col 1)

*** Less than 0,01%

Table no. 10

Number of incorporated trading companies and the value of the subscribed share capital, by counties, in the month of July 2011

County	Total registered companies		Subscribed capital		Average subscribed capital on company
	No.	%	thousand Lei	%	thousand Lei
0	1	2	3	4	5
Total ROMÂNIA	4885	100,0	549 627,9	100,0	112,9
ALBA	58	1,2	47,3	***	0,8
ARAD	126	2,6	13035,5	2,4	103,5
ARGES	110	2,3	88,0	0,0	0,8
BACAU	96	2,0	55,1	0,0	0,6
BIHOR	143	2,9	691,4	0,1	4,9
BISTRITA-NASAUD	62	1,3	14,7	***	0,2
BOTOSANI	26	0,5	219,4	0,0	8,4
BRASOV	128	2,6	531,7	0,1	4,2
BRAILA	60	1,2	26751,9	4,9	445,9
BUZAU	76	1,6	13900,8	2,5	182,9
CARAS-SEVERIN	47	1,0	825,7	0,2	17,6
CALARASI	53	1,1	100,9	0,0	1,9
CLUJ	273	5,6	282,3	0,1	1,0
CONSTANTA	213	4,4	194,9	0,0	0,9
COVASNA	32	0,7	26,4	***	0,8
DAMBOVITA	65	1,3	3403,0	0,6	53,2
DOLJ	159	3,3	261,1	0,0	1,6
GALATI	130	2,7	43,5	***	0,3
GIURGIU	58	1,2	8901,4	1,6	153,5
GORJ	54	1,1	15,2	***	0,3
HARGHITA	31	0,6	11,0	***	0,4
HUNEDOARA	100	2,0	86093,6	15,7	860,9
IALOMITA	30	0,6	7,2	***	0,2
IASI	147	3,0	1398,6	0,3	9,5
MARAMURES	61	1,2	42,4	***	0,7
MEHEDINTI	40	0,8	16,2	***	0,4
MURES	70	1,4	3909,9	0,7	56,7
NEAMT	60	1,2	30,2	***	0,5
OLT	62	1,3	129,1	0,0	2,1
PRAHOVA	135	2,8	62,2	0,0	0,5
SALAJ	41	0,8	9,3	***	0,2
SATU MARE	43	0,9	158,1	0,0	3,7
SIBIU	85	1,7	74,4	0,0	0,9
SUCEAVA	81	1,7	96,3	0,0	1,2
TELEORMAN	43	0,9	294,4	0,1	6,8
TIMIS	206	4,2	392,8	0,1	1,9
TULCEA	49	1,0	13,4	***	0,3
VASLUI	31	0,6	9,8	***	0,3
VALCEA	44	0,9	340,4	0,1	7,7
VRANCEA	35	0,7	1346,6	0,2	38,5
MUN. BUCURESTI	1237	25,3	378230,4	68,8	307,5
ILFOV	285	5,8	7571,6	1,4	26,8

Note: The average does not include filials because according to the Law no.31/1990 they are not juridical persons

*** Less than 0,01%

Table no. 11

Number of incorporated trading companies and the value of the subscribed share capital by legal forms, in the month of July 2011

Company type	Total registered companies		Subscribed capital		Average subscribed capital on company
	No.	%	thousand Lei	%	thousand Lei
0	1	2	3	4	5
Total ROMANIA	4885	100,0	549627,9	100,0	112,9
SNC					
SCS					
SA	24	0,5	429115,7	78,1	25242,1
SRL	4861	99,5	120512,2	21,9	24,8

Note: The average does not include filials because according to the Law no.31/1990 they are not juridical persons

*** Less than 0,01%

Diagram no.5

