



MINISTRY OF JUSTICE

THE NATIONAL TRADE REGISTER OFFICE

București, Bd. Unirii nr. 74, Bl. J3b, tronson II+III, sector 3; Telefon: +40 21 316.08.04, 316.08.10; Fax: +40 21 316.08.03; Cod poștal: 030837
Website: www.onrc.ro; E-mail: onrc@onrc.ro; Cod identificare Fiscală: 14942091

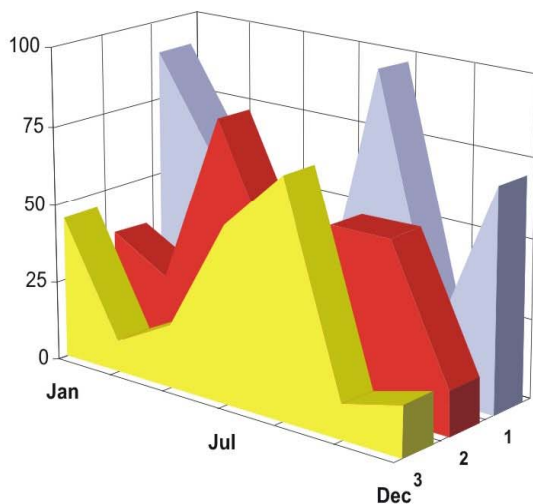
OPERATIONS IN THE CENTRAL TRADE REGISTER

STATISTIC SYNTHESIS

OF

RECORDS IN THE CENTRAL TRADE REGISTER

- 30th April 2011 - provisional data -



- ISSUE No. 233 -

MINISTRY OF JUSTICE

THE NATIONAL TRADE REGISTER OFFICE

- Operations such as incorporation of trading companies, submission of changes, and strike-off are carried out based on Law No.26/1990, as republished, Law No.31/1990, as republished and on the Methodological Norms no. P/608/1998.
- This work reflects the evolution of the operations with the Trade Register Office attached to Bucharest Law Court and the Trade Register Offices attached to County Law Courts.
- The data contained in the Central Trade Register refer to operations for which law sets out the obligation of being registered in the trade registers kept by the 42 trade register offices attached to law courts.

• The content of this publication shall not be reproduced, partly or entirely, in original or modified form, and shall not be stored in a recovery system and shall not be transmitted in any form or by any means without prior written authorization of the Ministry of Justice – The National Trade Register Office.

• The content of this publication December be used in articles, studies, books, as supporting or explanatory data only by clearly and accurately indicating the source.

CONTENTS

Page

1 Definitions	1
2.1 Data related to the period December 1990 –April 2011	3
Table no. 1 – Operations performed in the trade registers by categories of registration during December 1990 –April 2011, total by country and by counties, shares of counties in the total by country	3
Table no. 2 – Operations performed in the trade registers by categories of registration during 1990 –April 2011, total by country and counties, share of categories of operations in the total of each county	4
Table no. 3 – Number and structure of incorporations in the trade registers during 1990-April 2011	5
Chart no. 1 – Structure by years of incorporations in the trade register	
Table no. 4 – Number of incorporations in the trade registers by counties and capital sources during 1990 - April 2011	6
Table no. 5 – Number of incorporations in the trade registers by counties and business categories during 1990 –April 2011	7
2.2 Data related to April 2011	8
Table no. 6 – Operations performed in the trade registers by counties and categories of registrations in the month of April 2011	8
Table no. 7 – Number of incorporations in the trade registers by counties and capital sources in the month of April 2011	9
Table no. 8 – Number of incorporations in the trade registers by counties and business categories in the month of April 2011	10
Table no. 9 –Number of incorporations in the trade registers by domains of activity and business categories in the month of April 2011	11-12
Table no. 10 – Number of incorporated trading companies and the value of subscribed share capital, by counties, in the month of April 2011	13
Table no. 11– Number of incorporated trading companies and the value of subscribed share capital by legal forms, in the month of April 2011	14
Chart no. 5 – Average value of subscribed share capital by types of trading companies in the month of April 2011	14

Definitions

The Trade Register Office was established based on Law No. 26/1990, as republished and subsequently amended and supplemented, operates as an active institution since 1990 and is twofold structured:

- at national level, represented by the National Trade Register Office organized under the authority of the Ministry of Justice
- at local level, represented by the 42 Trade Register Offices attached to Law Courts, organized under the subordination of the National Trade Register Office

Categories of persons liable to registration in the trade register:

- natural persons: authorized natural persons, individual enterprises and family enterprises currently carrying on trading activities;

- legal persons represented by: Trading Companies, National Societies and Companies, National R&D Institutes, Autonomous Administrations, Co-operative Societies, Agricultural Co-operatives, Co-operative Organizations, Economic Interest Groupings, European Economic Interest Groupings, European Societies, European Co-operative Societies, branches of trading companies with legal establishment, operation and incorporation regime of trading company legal form under which they were incorporated.

- **Terms used in tables and charts**

- **Number of companies**, depending on the table, represents the number of trading companies incorporated during the reference period, the number of trading companies struck-off from the trade register. The following forms of organization are included: limited liability companies, joint-stock companies, limited partnerships by share, limited partnerships, general partnerships, and branches thereof.

- **Value of subscribed share capital:**

- **total, expressed in national currency:** the share capital value resulted by adding up the subscribed values (in cash and in kind) in national currency (lei)

- **Regions of economic development:**

<i>North-East:</i>	Suceava, Botoșani, Neamț, Iași, Bacău, Vaslui.
<i>South-East:</i>	Vrancea, Galați, Buzău, Brăila, Tulcea, Constanța.
<i>South-Muntenia:</i>	Argeș, Dâmbovița, Prahova, Teleorman, Giurgiu, Călărași, Ialomița.
<i>South-West Oltenia:</i>	Gorj, Vâlcea, Dolj, Mehedinți, Olt.
<i>West:</i>	Arad, Caraș-Severin, Hunedoara, Timiș.
<i>North-West:</i>	Bihor, Bistrița, Cluj, Satu Mare, Sălaj, Maramureș.
<i>Center:</i>	Alba, Brașov, Covasna, Harghita, Mureș, Sibiu.
<i>Bucharest-Ilfov:</i>	București, Ilfov.

NACE Code – The classification of economic activities in the national economy was approved by GO No. 656/1997, amended by Order No 601/2002 and Order no. 337/2007 of the President of the National Institute of Statistics, and complies with the international classification used in statistic reports and official documents. The activities are ranked by the harmonization principle, by sections, divisions, groups and classes.

Abbreviations

- **PF** - Natural Person; the following forms of organization are included in this category: natural persons and family associations registered until 25.04.2008, authorized natural persons, individual enterprises and family enterprises.
- **SNC** - General Partnership
- **SCS** - Limited Partnership
- **SCA** - Limited Partnership by Share
- **SA** - Joint-Stock Company
- **SRL** - Limited Liability Company
- **RA** - Autonomous Administration
- **APJ** - Other legal persons having the obligation to register in the trade register: National R&D Institutes, Economic Interest Groupings, European Economic Interest Groupings, European Societies, European Co-operative Societies, Agricultural Co-operatives, Co-operative Organizations.

Sources of Information:

The integrated IT system of the trade register is designed by The National Trade Register Office in compliance with the provisions of the related legislation in force. The source of information consists of the trade registers organized in computerized system, kept by the trade register offices attached to law courts.

Table no. 1

**Operations performed in the trade registers by categories of registration during
December 1990 – April 2011, total by country and by counties, share of counties in
the total by country**

Counties	Total of registered operations		out of which :					
			Registered companies		Changes in statutory documents		Strike off companies	
	No.	%	No.	%	No.	%	No.	%
0	1	2	3	4	7	8	9	10
Total ROMÂNIA	14839385	100,0	2129555	100,0	11876451	100,0	833379	100,0
ALBA	224744	1,5	35863	1,7	176944	1,5	11937	1,4
ARAD	350652	2,4	51830	2,4	277615	2,3	21207	2,5
ARGES	358602	2,4	54634	2,6	287354	2,4	16614	2,0
BACAU	344313	2,3	53048	2,5	268276	2,3	22989	2,8
BIHOR	450320	3,0	66484	3,1	361091	3,0	22745	2,7
BISTRITA-NASAUD	180021	1,2	27581	1,3	141796	1,2	10644	1,3
BOTOSANI	139483	0,9	26092	1,2	102173	0,9	11218	1,3
BRASOV	575119	3,9	65582	3,1	486816	4,1	22721	2,7
BRAILA	227207	1,5	29833	1,4	188424	1,6	8950	1,1
BUZAU	257510	1,7	38308	1,8	202337	1,7	16865	2,0
CARAS-SEVERIN	171862	1,2	25716	1,2	133808	1,1	12338	1,5
CALARASI	135569	0,9	21500	1,0	104890	0,9	9179	1,1
CLUJ	656900	4,4	97714	4,6	527149	4,4	32037	3,8
CONSTANTA	635162	4,3	87380	4,1	511021	4,3	36761	4,4
COVASNA	127927	0,9	18227	0,9	102261	0,9	7439	0,9
DAMBOVITA	213317	1,4	39846	1,9	154336	1,3	19135	2,3
DOLJ	401002	2,7	56588	2,7	322142	2,7	22272	2,7
GALATI	376750	2,5	50675	2,4	304962	2,6	21113	2,5
GIURGIU	117622	0,8	17976	0,8	92185	0,8	7461	0,9
GORJ	225335	1,5	25199	1,2	190173	1,6	9963	1,2
HARGHITA	222593	1,5	33268	1,6	178182	1,5	11143	1,3
HUNEDOARA	297595	2,0	43412	2,0	235975	2,0	18208	2,2
IALOMITA	136668	0,9	19768	0,9	107048	0,9	9852	1,2
IASI	491514	3,3	71141	3,3	395796	3,3	24577	2,9
MARAMURES	315521	2,1	53573	2,5	238395	2,0	23553	2,8
MEHEDINTI	152008	1,0	23874	1,1	117404	1,0	10730	1,3
MURES	409088	2,8	52889	2,5	334509	2,8	21690	2,6
NEAMT	314296	2,1	45030	2,1	248673	2,1	20593	2,5
OLT	177105	1,2	29411	1,4	134798	1,1	12896	1,5
PRAHOVA	500780	3,4	70938	3,3	401700	3,4	28142	3,4
SALAJ	133243	0,9	21524	1,0	102988	0,9	8731	1,0
SATU MARE	232310	1,6	36277	1,7	180479	1,5	15554	1,9
SIBIU	323223	2,2	41914	2,0	265853	2,2	15456	1,9
SUCEAVA	350211	2,4	52525	2,5	272075	2,3	25611	3,1
TELEORMAN	158510	1,1	24723	1,2	124488	1,0	9299	1,1
TIMIS	496912	3,3	75406	3,5	395883	3,3	25623	3,1
TULCEA	174957	1,2	21692	1,0	143740	1,2	9525	1,1
VASLUI	184347	1,2	26290	1,2	145165	1,2	12892	1,5
VALCEA	227639	1,5	34258	1,6	177494	1,5	15887	1,9
VRANCEA	181805	1,2	26328	1,2	147197	1,2	8280	1,0
MUN. BUCURESTI	2944273	19,8	392779	18,4	2400863	20,2	150631	18,1
ILFOV	245369	1,7	42458	2,0	191993	1,6	10918	1,3

*** Less 0,01%

Table no. 2

Operations performed in the trade registers during December 1990 – April 2011, total by country and counties, share of categories of operations in the total of each county

Counties	Total of registered operations		out of which :					
			Registered companies		Changes in statutory documents		Strike off companies	
	No.	%	No.	%	No.	%	No.	%
0	1	2	3	4	7	8	11	12
Total ROMÂNIA	14839385	100,0	2129555	14,4	11876451	80,0	833379	5,6
ALBA	224744	100,0	35863	16,0	176944	78,7	11937	5,3
ARAD	350652	100,0	51830	14,8	277615	79,2	21207	6,0
ARGES	358602	100,0	54634	15,2	287354	80,1	16614	4,6
BACAU	344313	100,0	53048	15,4	268276	77,9	22989	6,7
BIHOR	450320	100,0	66484	14,8	361091	80,2	22745	5,1
BISTRITA-NASAUD	180021	100,0	27581	15,3	141796	78,8	10644	5,9
BOTOSANI	139483	100,0	26092	18,7	102173	73,3	11218	8,0
BRASOV	575119	100,0	65582	11,4	486816	84,6	22721	4,0
BRAILA	227207	100,0	29833	13,1	188424	82,9	8950	3,9
BUZAU	257510	100,0	38308	14,9	202337	78,6	16865	6,5
CARAS-SEVERIN	171862	100,0	25716	15,0	133808	77,9	12338	7,2
CALARASI	135569	100,0	21500	15,9	104890	77,4	9179	6,8
CLUJ	656900	100,0	97714	14,9	527149	80,2	32037	4,9
CONSTANTA	635162	100,0	87380	13,8	511021	80,5	36761	5,8
COVASNA	127927	100,0	18227	14,2	102261	79,9	7439	5,8
DAMBOVITA	213317	100,0	39846	18,7	154336	72,4	19135	9,0
DOLJ	401002	100,0	56588	14,1	322142	80,3	22272	5,6
GALATI	376750	100,0	50675	13,5	304962	80,9	21113	5,6
GIURGIU	117622	100,0	17976	15,3	92185	78,4	7461	6,3
GORJ	225335	100,0	25199	11,2	190173	84,4	9963	4,4
HARGHITA	222593	100,0	33268	14,9	178182	80,0	11143	5,0
HUNEDOARA	297595	100,0	43412	14,6	235975	79,3	18208	6,1
IALOMITA	136668	100,0	19768	14,5	107048	78,3	9852	7,2
IASI	491514	100,0	71141	14,5	395796	80,5	24577	5,0
MARAMURES	315521	100,0	53573	17,0	238395	75,6	23553	7,5
MEHEDINTI	152008	100,0	23874	15,7	117404	77,2	10730	7,1
MURES	409088	100,0	52889	12,9	334509	81,8	21690	5,3
NEAMT	314296	100,0	45030	14,3	248673	79,1	20593	6,6
OLT	177105	100,0	29411	16,6	134798	76,1	12896	7,3
PRAHOVA	500780	100,0	70938	14,2	401700	80,2	28142	5,6
SALAJ	133243	100,0	21524	16,2	102988	77,3	8731	6,6
SATU MARE	232310	100,0	36277	15,6	180479	77,7	15554	6,7
SIBIU	323223	100,0	41914	13,0	265853	82,3	15456	4,8
SUCEAVA	350211	100,0	52525	15,0	272075	77,7	25611	7,3
TELEORMAN	158510	100,0	24723	15,6	124488	78,5	9299	5,9
TIMIS	496912	100,0	75406	15,2	395883	79,7	25623	5,2
TULCEA	174957	100,0	21692	12,4	143740	82,2	9525	5,4
VASLUI	184347	100,0	26290	14,3	145165	78,7	12892	7,0
VALCEA	227639	100,0	34258	15,0	177494	78,0	15887	7,0
VRANCEA	181805	100,0	26328	14,5	147197	81,0	8280	4,6
MUN. BUCURESTI	2944273	100,0	392779	13,3	2400863	81,5	150631	5,1
ILFOV	245369	100,0	42458	17,3	191993	78,2	10918	4,4

Table no.3

Number and structure of incorporations in the trade registers during December 1990 - April 2011

Period (year, month)	Registered companies	Percentage	
	No.	%	%
0	1	2	3
Total, 30 April 2010, out of which	2129555	100,00	
Period 1990 - 2000	849469	38,9	
Year 2001	61265	2,7	
Year 2002	84780	2,9	
Year 2003	123582	4,0	
Year 2004	144284	5,8	
Year 2005	159464	6,8	
Year 2006	135371	7,5	
Year 2007	144728	6,4	
Year 2008	144173	6,8	
Year 2009	116031	6,8	
Year 2010	122831	5,4	
Year 2011 (I - XII) out of which :	43578	2,0	100,0
January	7783		17,9
February	10877		25,0
March	14482		33,2
April	10436		23,9

Note: Column 2 reveals the annual structure of incorporations; column 3 reveals the structure by months during the current year.

Diagram no.1

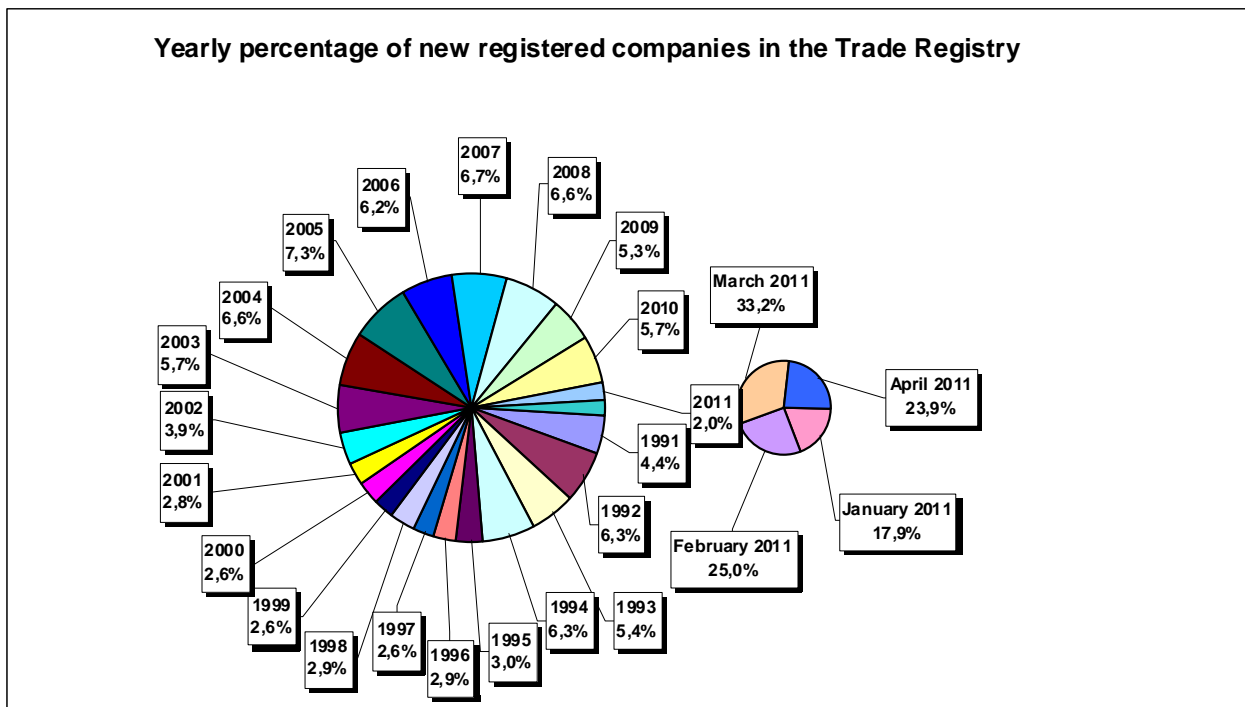


Table no. 4

**Number of incorporations in the trade registers by counties and capital sources during
December 1990 - April 2011**

Counties	Total		out of which:						Ranking by: *	
			Private capital				State majority capital			Mixed capital (state+private)
			out of which:				out of which:			
			PF	Companies	SC	APJ	RA	Companies		Companies
No.	%	No.	No.	No.	No.	No.	No.			
0	1	2	3	4	5	6	6	7	8	9
Total ROMANIA	2129555	100,0	631865	1477411	2049	5753	1394	2416	8674	X
ALBA	35863	1,7	14779	20645	36	148	38	47	170	24
ARAD	51830	2,4	20845	30347	60	170	30	43	336	15
ARGES	54634	2,6	18965	35229	48	176	31	32	153	10
BACAU	53048	2,5	19479	32949	153	162	35	45	226	12
BIHOR	66484	3,1	19786	46072	63	152	40	62	309	7
BISTRITA-NASAUD	27581	1,3	11484	15784	47	99	29	29	109	29
BOTOSANI	26092	1,2	12861	12690	40	185	21	176	119	32
BRASOV	65616	3,1	16479	48645	58	126	49	87	172	8
BRAILA	29799	1,4	9395	20017	42	102	30	46	167	27
BUZAU	38308	1,8	12468	25439	46	154	28	42	131	22
CARAS-SEVERIN	25716	1,2	9523	15801	42	108	39	65	138	33
CALARASI	21500	1,0	7292	13899	22	92	18	77	100	39
CLUJ	97714	4,6	28022	69111	62	161	52	42	264	2
CONSTANTA	87380	4,1	19347	67089	87	212	51	51	543	3
COVASNA	18227	0,9	7347	10603	41	71	24	32	109	41
DAMBOVITA	39846	1,9	19080	20332	32	141	30	75	156	21
DOLJ	56588	2,7	14482	41595	39	170	40	58	204	9
GALATI	50675	2,4	13247	37029	35	140	30	51	143	16
GIURGIU	17977	0,8	4690	12944	15	84	23	110	111	42
GORJ	25198	1,2	7394	17360	26	184	51	83	100	34
HARGHITA	33268	1,6	15221	17589	64	95	24	43	232	26
HUNEDOARA	43412	2,0	13248	29623	33	84	42	95	287	18
IALOMITA	19768	0,9	7926	11580	27	83	15	46	91	40
IASI	71141	3,3	24294	46130	94	170	34	77	344	5
MARAMURES	53573	2,5	22876	30323	43	129	38	41	124	11
MEHEDINTI	23874	1,1	9087	14534	19	89	19	27	99	36
MURES	52889	2,5	21226	31202	68	160	30	34	169	13
NEAMT	45030	2,1	17677	26895	66	166	30	30	166	17
OLT	29411	1,4	11926	17079	27	166	26	64	123	28
PRAHOVA	70938	3,3	24247	46042	67	184	52	74	272	6
SALAJ	21524	1,0	9310	11951	41	111	19	28	64	38
SATU MARE	36277	1,7	13370	22570	41	100	21	42	134	23
SIBIU	41914	2,0	12723	28728	37	121	34	110	161	20
SUCEAVA	52525	2,5	25704	26211	73	218	31	67	221	14
TELEORMAN	24723	1,2	9438	14836	33	165	21	46	184	35
TIMIS	75406	3,5	15148	59576	69	155	38	69	351	4
TULCEA	21692	1,0	8409	12907	36	67	19	42	212	37
VASLUI	26290	1,2	13203	12759	22	113	16	41	136	31
VALCEA	34258	1,6	14670	19156	64	171	42	40	115	25
VRANCEA	26328	1,2	9220	16799	35	115	17	28	114	30
MUN. BUCURESTI	392779	18,4	39735	351461	64	156	116	106	1142	1
ILFOV	42458	2,0	6242	35880	31	98	21	13	173	19

*) The total number of incorporations (col 1)

Table no. 5

**Number of incorporations in the trade registers by counties and business categories
during December 1990 – April 2011**

County	Total		out of which:							
			PF	companies: 1488501				RA	SC	APJ
				SNC	SCS	SRL	SA			
				No.	No.	No.	No.			
0	1	2	3	4	5	6	7	8	9	10
Total ROMÂNIA	2129555	100,0	631865	32681	1622	1420110	34081	1394	2049	5753
ALBA	35863	1,7	14779	890	11	19386	575	38	36	148
ARAD	51830	2,4	20845	54	13	29946	712	30	60	170
ARGES	54634	2,6	18965	107	15	34447	845	31	48	176
BACAU	53048	2,5	19479	1299	4	31160	756	35	153	162
BIHOR	66484	3,1	19786	127	48	45330	938	40	63	152
BISTRITA-NASAUD	27581	1,3	11484	146	22	15331	423	29	47	99
BOTOSANI	26092	1,2	12861	468	1	12053	463	21	40	185
BRASOV	65582	3,1	16479	239	21	47709	901	49	58	126
BRAILA	29833	1,4	9395	376	12	19335	541	30	42	102
BUZAU	38308	1,8	12468	3747	46	21223	596	28	46	154
CARAS-SEVERIN	25716	1,2	9523	118	9	15401	476	39	42	108
CALARASI	21500	1,0	7292	609	3	13099	365	18	22	92
CLUJ	97714	4,6	28022	2112	21	65918	1366	52	62	161
CONSTANTA	87380	4,1	19347	311	23	65814	1535	51	87	212
COVASNA	18227	0,9	7347	148	4	10278	314	24	41	71
DAMBOVITA	39846	1,9	19080	60	8	19987	508	30	32	141
DOLJ	56588	2,7	14482	1560	8	39365	924	40	39	170
GALATI	50675	2,4	13247	1574	6	34772	871	30	35	140
GIURGIU	17976	0,8	4690	35	8	12786	335	23	15	84
GORJ	25199	1,2	7394	29	1	17006	508	51	26	184
HARGHITA	33268	1,6	15221	62	7	17291	504	24	64	95
HUNEDOARA	43412	2,0	13248	1166	98	28044	697	42	33	84
IALOMITA	19768	0,9	7926	269	12	11081	355	15	27	83
IASI	71141	3,3	24294	508	111	44884	1046	34	94	170
MARAMURES	53573	2,5	22876	1927	23	27923	614	38	43	129
MEHEDINTI	23874	1,1	9087	427	3	13885	345	19	19	89
MURES	52889	2,5	21226	37	34	30644	690	30	68	160
NEAMT	45030	2,1	17677	3293	30	23081	687	30	66	166
OLT	29411	1,4	11926	1611	1	15149	505	26	27	166
PRAHOVA	70938	3,3	24247	3122	15	42306	945	52	67	184
SALAJ	21524	1,0	9310	600	4	11138	301	19	41	111
SATU MARE	36277	1,7	13370	283	9	21970	483	21	41	100
SIBIU	41914	2,0	12723	778	49	27485	687	34	37	121
SUCEAVA	52525	2,5	25704	438	8	25448	605	31	73	218
TELEORMAN	24723	1,2	9438	272	399	13958	437	21	33	165
TIMIS	75406	3,5	15148	616	35	58047	1298	38	69	155
TULCEA	21692	1,0	8409	1363	114	11198	486	19	36	67
VASLUI	26290	1,2	13203	90	13	12406	427	16	22	113
VALCEA	34258	1,6	14670	364	6	18430	511	42	64	171
VRANCEA	26328	1,2	9220	357	10	16105	469	17	35	115
MUN. BUCURESTI	392779	18,4	39735	1039	323	344007	7339	116	64	156
ILFOV	42458	2,0	6242	50	34	35284	698	21	31	98

Table no. 6

Operations performed in the trade registers by counties and categories of registration in the month of April 2011

County	Total of operations carried on		out of which:					
			New incorporations		Changes in statutory documents		Strike off companies	
	No.	%	No.	%	No.	%	No.	%
0	1	2	3	4	5	6	9	10
Total ROMÂNIA	61484	100,0	10436	17,0	45705	74,3	5343	8,7
ALBA	860	100,0	200	23,3	618	71,9	42	4,9
ARAD	1565	100,0	218	13,9	972	62,1	375	24,0
ARGES	1354	100,0	297	21,9	989	73,0	68	5,0
BACAU	1323	100,0	241	18,2	990	74,8	92	7,0
BIHOR	1969	100,0	450	22,9	1317	66,9	202	10,3
BISTRITA-NASAUD	637	100,0	139	21,8	390	61,2	108	17,0
BOTOSANI	621	100,0	109	17,6	457	73,6	55	8,9
BRASOV	1771	100,0	277	15,6	1243	70,2	251	14,2
BRAILA	629	100,0	137	21,8	395	62,8	97	15,4
BUZAU	1452	100,0	177	12,2	1149	79,1	126	8,7
CARAS-SEVERIN	384	100,0	107	27,9	250	65,1	27	7,0
CALARASI	579	100,0	106	18,3	420	72,5	53	9,2
CLUJ	2509	100,0	526	21,0	1542	61,5	441	17,6
CONSTANTA	3163	100,0	400	12,6	2589	81,9	174	5,5
COVASNA	560	100,0	82	14,6	435	77,7	43	7,7
DAMBOVITA	805	100,0	155	19,3	581	72,2	69	8,6
DOLJ	1995	100,0	383	19,2	1434	71,9	178	8,9
GALATI	1839	100,0	254	13,8	1429	77,7	156	8,5
GIURGIU	639	100,0	124	19,4	496	77,6	19	3,0
GORJ	698	100,0	112	16,0	547	78,4	39	5,6
HARGHITA	803	100,0	151	18,8	579	72,1	73	9,1
HUNEDOARA	1269	100,0	174	13,7	1037	81,7	58	4,6
IALOMITA	579	100,0	107	18,5	446	77,0	26	4,5
IASI	2138	100,0	433	20,3	1524	71,3	181	8,5
MARAMURES	1328	100,0	247	18,6	991	74,6	90	6,8
MEHEDINTI	1284	100,0	97	7,6	1148	89,4	39	3,0
MURES	1516	100,0	239	15,8	1098	72,4	179	11,8
NEAMT	1117	100,0	220	19,7	848	75,9	49	4,4
OLT	522	100,0	112	21,5	369	70,7	41	7,9
PRAHOVA	1824	100,0	359	19,7	1231	67,5	234	12,8
SALAJ	655	100,0	102	15,6	502	76,6	51	7,8
SATU MARE	992	100,0	173	17,4	692	69,8	127	12,8
SIBIU	1115	100,0	198	17,8	840	75,3	77	6,9
SUCEAVA	1197	100,0	226	18,9	856	71,5	115	9,6
TELEORMAN	555	100,0	127	22,9	396	71,4	32	5,8
TIMIS	2031	100,0	408	20,1	1464	72,1	159	7,8
TULCEA	627	100,0	114	18,2	478	76,2	35	5,6
VASLUI	461	100,0	100	21,7	297	64,4	64	13,9
VALCEA	896	100,0	160	17,9	667	74,4	69	7,7
VRANCEA	790	100,0	109	13,8	624	79,0	57	7,2
MUN. BUCURESTI	12704	100,0	1717	13,5	10142	79,8	845	6,7
ILFOV	1729	100,0	369	21,3	1233	71,3	127	7,3

*) by effect of implementation of Law no. 314/2001, art.1 and art. 6

Table no.7

Number of incorporations in the trade registers by counties and capital sources in the month of April 2011

County	Total		out of which:						Rnking by: *	
			Private capital			State majority capital		Mixed capital (state+private)		
			out of which:			out of which:				
			PF	Companies	SC	APJ	RA	Companies		Companies
No.	%	No.	No.	No.		No.	No.	No.		
0	1	2	3	4	5		6	7	8	9
Total ROMÂNIA	10436	100,0	4209	6207	10	10				X
ALBA	200	1,9	106	94						19
ARAD	218	2,1	112	106						18
ARGES	297	2,8	138	159						10
BACAU	241	2,3	112	126	2	1				14
BIHOR	450	4,3	197	253						3
BISTRITA-NASAUD	139	1,3	67	71	1					27
BOTOSANI	109	1,0	58	50		1				34
BRASOV	277	2,7	105	172						11
BRAILA	137	1,3	64	73						28
BUZAU	177	1,7	70	107						21
CARAS-SEVERIN	107	1,0	45	62						36
CALARASI	106	1,0	61	45						38
CLUJ	526	5,0	183	341		2				2
CONSTANTA	400	3,8	157	242		1				6
COVASNA	82	0,8	47	35						42
DAMBOVITA	155	1,5	82	72		1				25
DOLJ	383	3,7	133	250						7
GALATI	254	2,4	101	153						12
GIURGIU	124	1,2	34	90						30
GORJ	112	1,1	63	49						32
HARGHITA	151	1,4	79	70		2				26
HUNEDOARA	174	1,7	80	94						22
IALOMITA	107	1,0	57	50						37
IASI	433	4,1	222	204	7					4
MARAMURES	247	2,4	129	118						13
MEHEDINTI	97	0,9	59	38						41
MURES	239	2,3	109	130						15
NEAMT	220	2,1	128	92						17
OLT	112	1,1	44	68						33
PRAHOVA	359	3,4	159	200						9
SALAJ	102	1,0	45	56		1				39
SATU MARE	173	1,7	69	104						23
SIBIU	198	1,9	94	104						20
SUCEAVA	226	2,2	130	96						16
TELEORMAN	127	1,2	44	82		1				29
TIMIS	408	3,9	137	271						5
TULCEA	114	1,1	55	59						31
VASLUI	100	1,0	46	54						40
VALCEA	160	1,5	97	63						24
VRANCEA	109	1,0	49	60						35
MUN. BUCURESTI	1717	16,5	370	1347						1
ILFOV	369	3,5	72	297						8

*) The total number of incorporations (col 1)

*** Less than 0,01%

Table no.8

Number of incorporations in the trade registers by counties and business categories in the month of April 2011

County	Total		out of which:							
			PF	companies: 6207				RA	SC	APJ
	SNC	SCS		SRL	SA					
	No.	%	No.	No.	No.	No.	No.	No.		
0	1	2	3	4	5	6	7	8	9	
Total ROMÂNIA	10436	100,0	4209	1	1	6175	30		10	10
ALBA	200	1,9	106			94				
ARAD	218	2,1	112			105	1			
ARGES	297	2,8	138			159				
BACAU	241	2,3	112			125	1		2	1
BIHOR	450	4,3	197			250	3			
BISTRITA-NASAUD	139	1,3	67			71			1	
BOTOSANI	109	1,0	58			50				1
BRASOV	277	2,7	105			170	2			
BRAILA	137	1,3	64			73				
BUZAU	177	1,7	70			106	1			
CARAS-SEVERIN	107	1,0	45			62				
CALARASI	106	1,0	61			45				
CLUJ	526	5,0	183			341				2
CONSTANTA	400	3,8	157			241	1			1
COVASNA	82	0,8	47			35				
DAMBOVITA	155	1,5	82			72				1
DOLJ	383	3,7	133			249	1			
GALATI	254	2,4	101			151	2			
GIURGIU	124	1,2	34			90				
GORJ	112	1,1	63			49				
HARGHITA	151	1,4	79			70				2
HUNEDOARA	174	1,7	80			94				
IALOMITA	107	1,0	57			50				
IASI	433	4,1	222			204			7	
MARAMURES	247	2,4	129			118				
MEHEDINTI	97	0,9	59			38				
MURES	239	2,3	109			130				
NEAMT	220	2,1	128			92				
OLT	112	1,1	44			68				
PRAHOVA	359	3,4	159			200				
SALAJ	102	1,0	45			56				1
SATU MARE	173	1,7	69			104				
SIBIU	198	1,9	94			103	1			
SUCEAVA	226	2,2	130			96				
TELEORMAN	127	1,2	44			82				1
TIMIS	408	3,9	137			268	3			
TULCEA	114	1,1	55			59				
VASLUI	100	1,0	46			54				
VALCEA	160	1,5	97			62	1			
VRANCEA	109	1,0	49	1		58	1			
MUN. BUCURESTI	1717	16,5	370		1	1335	11			
ILFOV	369	3,5	72			296	1			

Table no. 9

Number of incorporations in the trade registers by domains of activity and business categories in the month of April 2011

CAEN segment	Field of activity	Total		out of which:							
				PF	companies: 6207				RA	SC	APJ
		No.	%		No.	SNC	SCS	SRL			
				No.		No.	No.	No.	No.	No.	No.
0	1	2	3	4	5	6	7	8	9	10	11
	Total ROMÂNIA	10436	100,0	4209	1	1	6175	30		10	10
1	Agriculture, hunting and related service activities	737	7,1	512			219	1			5
2	Forestry and logging	68	0,7	23			45				
3	Fishing and aquaculture	70	0,7	52			18				
5	Mining of hard and brown coal	1	0,0				1				
6	Extraction of crude petroleum and natural gas	1	0,0				1				
7	Mining of metal ores										
8	Other mining and quarrying	14	0,1				14				
9	Mining support service activities	1	0,0				1				
10	Manufacture of food products	162	1,6	46			114				2
11	Manufacture of beverages	14	0,1	4			10				
12	Manufacture of tobacco products	1	0,0				1				
13	Manufacture of textiles	12	0,1	1			11				
14	Manufacture of wearing apparel	77	0,7	24			53				
15	Tanning and dressing of leather; manufacture of luggage, handbags, saddlery, harness and footwear; dressing and dyeing of fur	23	0,2	6			16			1	
16	Manufacture of wood and of products of wood and cork, except furniture; manufacture of articles of straw and plaiting materials	142	1,4	38			104				
17	Manufacture of paper and paper products	11	0,1	1			10				
18	Printing and reproduction of recorded media	19	0,2	2			17				
19	Manufacture of coke and refined petroleum products										
20	Manufacture of chemicals and chemical products	13	0,1	1			12				
21	Manufacture of basic pharmaceutical products and pharmaceutical preparations	1	0,0				1				
22	Manufacture of rubber and plastic products	30	0,3	2			27	1			
23	Manufacture of other non-metallic mineral products	61	0,6	21			40				
24	Manufacture of basic metals	7	0,1				7				
25	Manufacture of fabricated metal products, except machinery and equipment	110	1,1	50			60				
26	Manufacture of computer, electronic and optical products	7	0,1	1			6				
27	Manufacture of electrical equipment	4	0,0	1			3				
28	Manufacture of machinery and equipment n.e.c.	11	0,1				11				
29	Manufacture of motor vehicles, trailers and semi-trailers	1	0,0					1			
30	Manufacture of other transport equipment	5	0,0				5				
31	Manufacture of furniture	42	0,4	10			32				
32	Other manufacturing	36	0,3	21			15				
33	Repair and installation of machinery and equipment	32	0,3	9			23				
35	Electricity, gas, steam and air conditioning supply	65	0,6	1		1	61	2			
36	Water collection, treatment and supply	6	0,1				5	1			
37	Sewerage	6	0,1	1			5				
38	Waste collection, treatment and disposal activities; materials recovery	28	0,3	1			27				
39	Remediation activities and other waste management services										
41	Construction of buildings	777	7,4	52			723	2			
42	Civil engineering	53	0,5	2			51				
43	Specialised construction activities	526	5,0	122			403	1			
45	Wholesale and retail trade and repair of motor vehicles and motorcycles	270	2,6	39			231				
46	Wholesale trade, except of motor vehicles and motorcycles	1057	10,1	207			850				
47	Retail trade, except of motor vehicles and motorcycles	1759	16,9	590			1165	3		1	
49	Land transport and transport via pipelines	551	5,3	198			353				
50	Water transport	5	0,0	1			4				

Table no. 10

Number of incorporated trading companies and the value of the subscribed share capital, by counties, in the month of April 2011

County	Total registered companies		Subscribed capital		Average subscribed capital on company
	No.	%	thousand Lei	%	thousand Lei
0	1	2	3	4	5
Total ROMÂNIA	6207	100,0	193497,8	100,0	31,2
ALBA	94	1,5	114,4	0,1	1,2
ARAD	106	1,7	752,6	0,4	7,1
ARGES	159	2,6	50,5	0,0	0,3
BACAU	126	2,0	1249,2	0,6	9,9
BIHOR	253	4,1	796,3	0,4	3,1
BISTRITA-NASAUD	71	1,1	94,8	0,0	1,3
BOTOSANI	50	0,8	13,7	***	0,3
BRASOV	172	2,8	119889,4	62,0	697,0
BRAILA	73	1,2	227,3	0,1	3,1
BUZAU	107	1,7	1252,4	0,6	11,7
CARAS-SEVERIN	62	1,0	20,6	0,0	0,3
CALARASI	45	0,7	58,6	0,0	1,3
CLUJ	341	5,5	447,9	0,2	1,3
CONSTANTA	242	3,9	210,1	0,1	0,9
COVASNA	35	0,6	51,3	0,0	1,5
DAMBOVITA	72	1,2	18,2	***	0,3
DOLJ	250	4,0	280,6	0,1	1,1
GALATI	153	2,5	1287,8	0,7	8,4
GIURGIU	90	1,4	68,7	0,0	0,8
GORJ	49	0,8	11,5	***	0,2
HARGHITA	70	1,1	1750,3	0,9	25,0
HUNEDOARA	94	1,5	152,9	0,1	1,6
IALOMITA	50	0,8	35,2	0,0	0,7
IASI	204	3,3	300,6	0,2	1,5
MARAMURES	118	1,9	7,2	***	0,1
MEHEDINTI	38	0,6	10,8	***	0,3
MURES	130	2,1	355,3	0,2	2,7
NEAMT	92	1,5	27,2	0,0	0,3
OLT	68	1,1	19,7	0,0	0,3
PRAHOVA	200	3,2	700,3	0,4	3,5
SALAJ	56	0,9	42,4	0,0	0,8
SATU MARE	104	1,7	33,5	0,0	0,3
SIBIU	104	1,7	884,7	0,5	8,5
SUCEAVA	96	1,5	2297,2	1,2	23,9
TELEORMAN	82	1,3	88,0	0,0	1,1
TIMIS	271	4,4	1154,9	0,6	4,3
TULCEA	59	1,0	74,8	0,0	1,3
VASLUI	54	0,9	28,5	0,0	0,5
VALCEA	63	1,0	115,3	0,1	1,8
VRANCEA	60	1,0	128,4	0,1	2,1
MUN. BUCURESTI	1347	21,7	46012,7	23,8	34,2
ILFOV	297	4,8	12382,1	6,4	41,7

Note: The average does not include filials because according to the Law no.31/1990 they are not juridical persons

*** Less than 0,01%

Table no. 11

Number of incorporated trading companies and the value of the subscribed share capital by legal forms, in the month of April 2011

Company type	Total registered companies		Subscribed capital		Average subscribed capital on company
	No.	%	thousand Lei	%	thousand Lei
0	1	2	3	4	5
Total ROMÂNIA	6207	100,0	193497,8	100,0	31,2
SNC	1	0,0	0,3	***	
SCS	1	0,0	18040,1	9,3	
SA	30	0,5	136116,5	70,3	5918,1
SRL	6175	99,5	39341,0	20,3	6,4

Note: The average does not include filials because according to the Law no.31/1990 they are not juridical persons

*** Less than 0,01%

Diagram no.5

