



MINISTRY OF JUSTICE

THE NATIONAL TRADE REGISTER OFFICE

București, Bd. Unirii nr. 74, Bl. J3b, tronson II+III, sector 3; Telefon: +40 21 316.08.04, 316.08.10; Fax: +40 21 316.08.03; Cod poștal: 030837  
Website: [www.onrc.ro](http://www.onrc.ro); E-mail: [onrc@onrc.ro](mailto:onrc@onrc.ro); Cod identificare Fiscală: 14942091

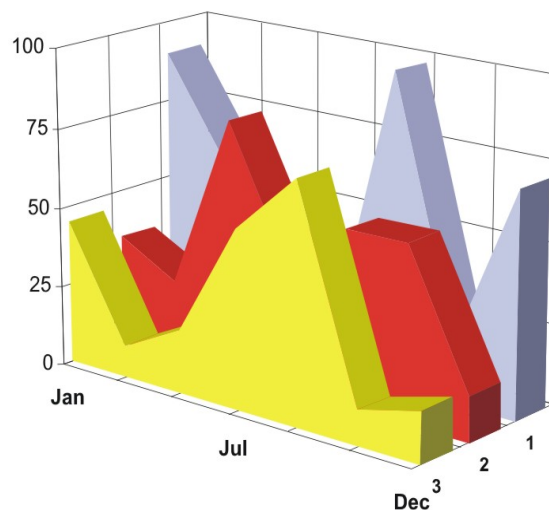
# OPERATIONS IN THE CENTRAL TRADE REGISTER

## STATISTIC SYNTHESIS

OF

**RECORDS IN THE CENTRAL TRADE REGISTER**

**- 31<sup>st</sup> March 2011 - provisional data -**



- ISSUE No. 232 -

## MINISTRY OF JUSTICE THE NATIONAL TRADE REGISTER OFFICE

---

- Operations such as incorporation of trading companies, submission of changes, and strike-off are carried out based on Law No.26/1990, as republished, Law No.31/1990, as republished and on the Methodological Norms no. P/608/1998.
- This work reflects the evolution of the operations with the Trade Register Office attached to Bucharest Law Court and the Trade Register Offices attached to County Law Courts.
- The data contained in the Central Trade Register refer to operations for which law sets out the obligation of being registered in the trade registers kept by the 42 trade register offices attached to law courts.

*• The content of this publication shall not be reproduced, partly or entirely, in original or modified form, and shall not be stored in a recovery system and shall not be transmitted in any form or by any means without prior written authorization of the Ministry of Justice – The National Trade Register Office.*

*• The content of this publication shall not be used in articles, studies, books, as supporting or explanatory data only by clearly and accurately indicating the source.*

# CONTENTS

Page

<b>1</b>	<b>Definitions</b>	<b>1</b>
<b>2.1</b>	<b>Data related to the period December 1990 –March 2011</b>	<b>3</b>
	<b>Table no. 1 – Operations performed in the trade registers by categories of registration during December 1990 –March 2011, total by country and by counties, shares of counties in the total by country</b>	<b>3</b>
	<b>Table no. 2 – Operations performed in the trade registers by categories of registration during 1990 –March 2011, total by country and counties, share of categories of operations in the total of each county</b>	<b>4</b>
	<b>Table no. 3 – Number and structure of incorporations in the trade registers during 1990-March 2011</b>	<b>5</b>
	<b>Chart no. 1 – Structure by years of incorporations in the trade register</b>	
	<b>Table no. 4 – Number of incorporations in the trade registers by counties and capital sources during 1990 - March 2011</b>	<b>6</b>
	<b>Table no. 5 – Number of incorporations in the trade registers by counties and business categories during 1990 –March 2011</b>	<b>7</b>
<b>2.2</b>	<b>Data related to March 2011</b>	<b>8</b>
	<b>Table no. 6 – Operations performed in the trade registers by counties and categories of registrations in the month of March 2011</b>	<b>8</b>
	<b>Table no. 7 – Number of incorporations in the trade registers by counties and capital sources in the month of March 2011</b>	<b>9</b>
	<b>Table no. 8 – Number of incorporations in the trade registers by counties and business categories in the month of March 2011</b>	<b>10</b>
	<b>Table no. 9 –Number of incorporations in the trade registers by domains of activity and business categories in the month of March 2011</b>	<b>11-12</b>
	<b>Table no. 10 – Number of incorporated trading companies and the value of subscribed share capital, by counties, in the month of March 2011</b>	<b>13</b>
	<b>Table no. 11– Number of incorporated trading companies and the value of subscribed share capital by legal forms, in the month of March 2011</b>	<b>14</b>
	<b>Chart no. 5 – Average value of subscribed share capital by types of trading companies in the month of March 2011</b>	<b>14</b>

## Definitions

The Trade Register Office was established based on Law No. 26/1990, as republished and subsequently amended and supplemented, operates as an active institution since 1990 and is twofold structured:

- at national level, represented by the National Trade Register Office organized under the authority of the Ministry of Justice
- at local level, represented by the 42 Trade Register Offices attached to Law Courts, organized under the subordination of the National Trade Register Office

Categories of persons liable to registration in the trade register:

- natural persons: authorized natural persons, individual enterprises and family enterprises currently carrying on trading activities;

- legal persons represented by: Trading Companies, National Societies and Companies, National R&D Institutes, Autonomous Administrations, Co-operative Societies, Agricultural Co-operatives, Co-operative Organizations, Economic Interest Groupings, European Economic Interest Groupings, European Societies, European Co-operative Societies, branches of trading companies with legal establishment, operation and incorporation regime of trading company legal form under which they were incorporated.

### • Terms used in tables and charts

➤ **Number of companies**, depending on the table, represents the number of trading companies incorporated during the reference period, the number of trading companies struck-off from the trade register. The following forms of organization are included: limited liability companies, joint-stock companies, limited partnerships by share, limited partnerships, general partnerships, and branches thereof.

### ➤ **Value of subscribed share capital:**

- **total, expressed in national currency:** the share capital value resulted by adding up the subscribed values (in cash and in kind) in national currency (lei)

### ➤ **Regions of economic development:**

<i>North-East:</i>	Suceava, Botoșani, Neamț, Iași, Bacău, Vaslui.
<i>South-East:</i>	Vrancea, Galați, Buzău, Brăila, Tulcea, Constanța.
<i>South-Muntenia:</i>	Argeș, Dâmbovița, Prahova, Teleorman, Giurgiu, Călărași, Ialomița.
<i>South-West Oltenia:</i>	Gorj, Vâlcea, Dolj, Mehedinți, Olt.
<i>West:</i>	Arad, Caraș-Severin, Hunedoara, Timiș.
<i>North-West:</i>	Bihor, Bistrița, Cluj, Satu Mare, Sălaj, Maramureș.
<i>Center:</i>	Alba, Brașov, Covasna, Harghita, Mureș, Sibiu.
<i>Bucharest-Ilfov:</i>	București, Ilfov.

NACE Code – The classification of economic activities in the national economy was approved by GO No. 656/1997, amended by Order No 601/2002 and Order no. 337/2007 of the President of the National Institute of Statistics, and complies with the international classification used in statistic reports and official documents. The activities are ranked by the harmonization principle, by sections, divisions, groups and classes.

### Abbreviations

- **PF** - Natural Person; the following forms of organization are included in this category: natural persons and family associations registered until 25.04.2008, authorized natural persons, individual enterprises and family enterprises.
- **SNC** - General Partnership
- **SCS** - Limited Partnership
- **SCA** - Limited Partnership by Share
- **SA** - Joint-Stock Company
- **SRL** - Limited Liability Company
- **RA** - Autonomous Administration
- **APJ** - Other legal persons having the obligation to register in the trade register: National R&D Institutes, Economic Interest Groupings, European Economic Interest Groupings, European Societies, European Co-operative Societies, Agricultural Co-operatives, Co-operative Organizations.

### Sources of Information:

The integrated IT system of the trade register is designed by The National Trade Register Office in compliance with the provisions of the related legislation in force. The source of information consists of the trade registers organized in computerized system, kept by the trade register offices attached to law courts.

Table no. 1

**Operations performed in the trade registers by categories of registration during  
December 1990 – March 2011, total by country and by counties, share of counties  
in the total by country**

Counties	Total of registered operations		out of which :					
			Registered companies		Changes in statutory documents		Strike off companies	
	No.	%	No.	%	No.	%	No.	%
0	1	2	3	4	5	6	7	8
<b>Total ROMÂNIA</b>	<b>14777902</b>	<b>100,0</b>	<b>2119120</b>	<b>100,0</b>	<b>11830746</b>	<b>100,0</b>	<b>828036</b>	<b>100,0</b>
ALBA	223884	1,5	35663	1,7	176326	1,5	11895	1,4
ARAD	349087	2,4	51612	2,4	276643	2,3	20832	2,5
ARGES	357248	2,4	54337	2,6	286365	2,4	16546	2,0
BACAU	342990	2,3	52807	2,5	267286	2,3	22897	2,8
BIHOR	448351	3,0	66034	3,1	359774	3,0	22543	2,7
BISTRITA-NASAUD	179384	1,2	27442	1,3	141406	1,2	10536	1,3
BOTOSANI	138862	0,9	25983	1,2	101716	0,9	11163	1,3
BRASOV	573348	3,9	65305	3,1	485573	4,1	22470	2,7
BRAILA	226578	1,5	29696	1,4	188029	1,6	8853	1,1
BUZAU	256058	1,7	38131	1,8	201188	1,7	16739	2,0
CARAS-SEVERIN	171478	1,2	25609	1,2	133558	1,1	12311	1,5
CALARASI	134990	0,9	21394	1,0	104470	0,9	9126	1,1
CLUJ	654391	4,4	97188	4,6	525607	4,4	31596	3,8
CONSTANTA	632000	4,3	86981	4,1	508432	4,3	36587	4,4
COVASNA	127367	0,9	18145	0,9	101826	0,9	7396	0,9
DAMBOVITA	212512	1,4	39691	1,9	153755	1,3	19066	2,3
DOLJ	399007	2,7	56205	2,7	320708	2,7	22094	2,7
GALATI	374911	2,5	50421	2,4	303533	2,6	20957	2,5
GIURGIU	116983	0,8	17852	0,8	91689	0,8	7442	0,9
GORJ	224637	1,5	25087	1,2	189626	1,6	9924	1,2
HARGHITA	221790	1,5	33117	1,6	177603	1,5	11070	1,3
HUNEDOARA	296326	2,0	43238	2,0	234938	2,0	18150	2,2
IALOMITA	136089	0,9	19661	0,9	106602	0,9	9826	1,2
IASI	489376	3,3	70708	3,3	394272	3,3	24396	2,9
MARAMURES	314193	2,1	53326	2,5	237404	2,0	23463	2,8
MEHEDINTI	150724	1,0	23777	1,1	116256	1,0	10691	1,3
MURES	407572	2,8	52650	2,5	333411	2,8	21511	2,6
NEAMT	313179	2,1	44810	2,1	247825	2,1	20544	2,5
OLT	176583	1,2	29299	1,4	134429	1,1	12855	1,6
PRAHOVA	498956	3,4	70579	3,3	400469	3,4	27908	3,4
SALAJ	132588	0,9	21422	1,0	102486	0,9	8680	1,0
SATU MARE	231318	1,6	36104	1,7	179787	1,5	15427	1,9
SIBIU	322108	2,2	41716	2,0	265013	2,2	15379	1,9
SUCEAVA	349014	2,4	52299	2,5	271219	2,3	25496	3,1
TELEORMAN	157955	1,1	24596	1,2	124092	1,0	9267	1,1
TIMIS	494881	3,3	74998	3,5	394419	3,3	25464	3,1
TULCEA	174330	1,2	21578	1,0	143262	1,2	9490	1,1
VASLUI	183886	1,2	26190	1,2	144868	1,2	12828	1,5
VALCEA	226743	1,5	34098	1,6	176827	1,5	15818	1,9
VRANCEA	181015	1,2	26219	1,2	146573	1,2	8223	1,0
MUN. BUCURESTI	2931569	19,8	391062	18,5	2390721	20,2	149786	18,1
ILFOV	243640	1,6	42089	2,0	190760	1,6	10791	1,3

\*\*\* Less 0,01%

Table no. 2

**Operations performed in the trade registers during December 1990 – March 2011, total by country and counties, share of categories of operations in the total of each county**

Counties	Total of registered operations		out of which :					
			Registered companies		Changes in statutory documents		Strike off companies	
	No.	%	No.	%	No.	%	No.	%
0	1	2	3	4	5	6	7	8
<b>Total ROMÂNIA</b>	<b>14777902</b>	<b>100,0</b>	<b>2119120</b>	<b>14,3</b>	<b>11830746</b>	<b>80,1</b>	<b>828036</b>	<b>5,6</b>
ALBA	223884	100,0	35663	15,9	176326	78,8	11895	5,3
ARAD	349087	100,0	51612	14,8	276643	79,2	20832	6,0
ARGES	357248	100,0	54337	15,2	286365	80,2	16546	4,6
BACAU	342990	100,0	52807	15,4	267286	77,9	22897	6,7
BIHOR	448351	100,0	66034	14,7	359774	80,2	22543	5,0
BISTRITA-NASAUD	179384	100,0	27442	15,3	141406	78,8	10536	5,9
BOTOSANI	138862	100,0	25983	18,7	101716	73,2	11163	8,0
BRASOV	573348	100,0	65305	11,4	485573	84,7	22470	3,9
BRAILA	226578	100,0	29696	13,1	188029	83,0	8853	3,9
BUZAU	256058	100,0	38131	14,9	201188	78,6	16739	6,5
CARAS-SEVERIN	171478	100,0	25609	14,9	133558	77,9	12311	7,2
CALARASI	134990	100,0	21394	15,8	104470	77,4	9126	6,8
CLUJ	654391	100,0	97188	14,9	525607	80,3	31596	4,8
CONSTANTA	632000	100,0	86981	13,8	508432	80,4	36587	5,8
COVASNA	127367	100,0	18145	14,2	101826	79,9	7396	5,8
DAMBOVITA	212512	100,0	39691	18,7	153755	72,4	19066	9,0
DOLJ	399007	100,0	56205	14,1	320708	80,4	22094	5,5
GALATI	374911	100,0	50421	13,4	303533	81,0	20957	5,6
GIURGIU	116983	100,0	17852	15,3	91689	78,4	7442	6,4
GORJ	224637	100,0	25087	11,2	189626	84,4	9924	4,4
HARGHITA	221790	100,0	33117	14,9	177603	80,1	11070	5,0
HUNEDOARA	296326	100,0	43238	14,6	234938	79,3	18150	6,1
IALOMITA	136089	100,0	19661	14,4	106602	78,3	9826	7,2
IASI	489376	100,0	70708	14,4	394272	80,6	24396	5,0
MARAMURES	314193	100,0	53326	17,0	237404	75,6	23463	7,5
MEHEDINTI	150724	100,0	23777	15,8	116256	77,1	10691	7,1
MURES	407572	100,0	52650	12,9	333411	81,8	21511	5,3
NEAMT	313179	100,0	44810	14,3	247825	79,1	20544	6,6
OLT	176583	100,0	29299	16,6	134429	76,1	12855	7,3
PRAHOVA	498956	100,0	70579	14,1	400469	80,3	27908	5,6
SALAJ	132588	100,0	21422	16,2	102486	77,3	8680	6,5
SATU MARE	231318	100,0	36104	15,6	179787	77,7	15427	6,7
SIBIU	322108	100,0	41716	13,0	265013	82,3	15379	4,8
SUCEAVA	349014	100,0	52299	15,0	271219	77,7	25496	7,3
TELEORMAN	157955	100,0	24596	15,6	124092	78,6	9267	5,9
TIMIS	494881	100,0	74998	15,2	394419	79,7	25464	5,1
TULCEA	174330	100,0	21578	12,4	143262	82,2	9490	5,4
VASLUI	183886	100,0	26190	14,2	144868	78,8	12828	7,0
VALCEA	226743	100,0	34098	15,0	176827	78,0	15818	7,0
VRANCEA	181015	100,0	26219	14,5	146573	81,0	8223	4,5
MUN. BUCURESTI	2931569	100,0	391062	13,3	2390721	81,6	149786	5,1
ILFOV	243640	100,0	42089	17,3	190760	78,3	10791	4,4

Table no.3

Number and structure of incorporations in the trade registers during December 1990 - March 2011

Period (year, month)	Registered companies	Percentage	
	No.	%	%
0	1	2	3
Total, March 2011, out of which	21 19120	100,00	
Year 1990 - 2000	849469	40,09	
Year 2001	61265	2,89	
Year 2002	84780	4,00	
Year 2003	123582	5,83	
Year 2004	144284	6,81	
Year 2005	159464	7,53	
Year 2006	135371	6,39	
Year 2007	144728	6,83	
Year 2008	144173	6,80	
Year 2009	116031	5,48	
Year 2010	122831	5,80	
Year 2011 (I - XII) out of which :	33142	1,56	100,0
January	7783		23,5
February	10877		32,8
March	14482		43,7

Note: Column 2 reveals the annual structure of incorporations; column 3 reveals the structure by months during the current year.

Diagram no.1

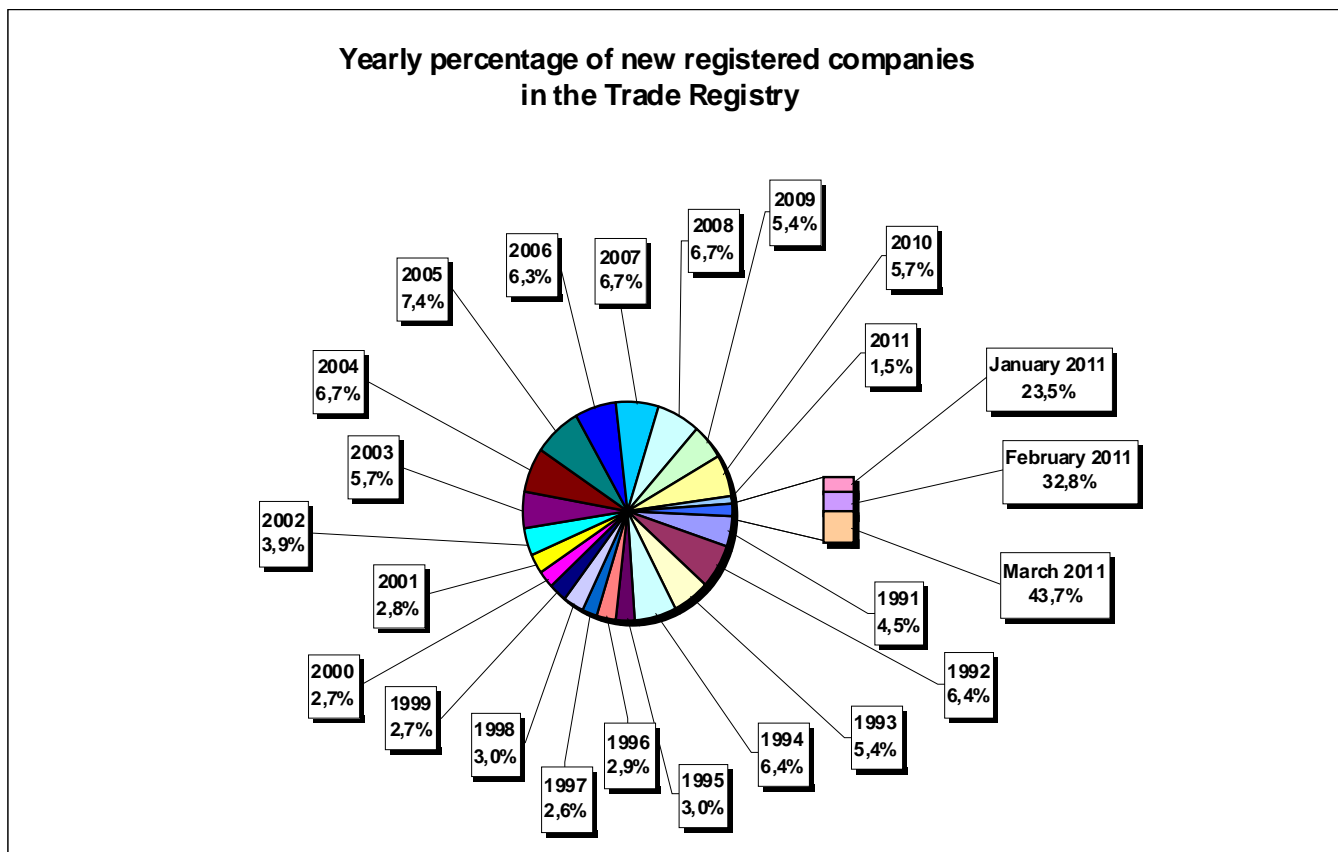


Table no. 4

**Number of incorporations in the trade registers by counties and capital sources during  
December 1990 - March 2011**

Counties	Total		out of which:						Ranking by: *	
			Private capital				State majority capital			Mixed capital (state+private)
			out of which:				out of which:			
			PF	Companies	SC	APJ	RA	Companies		Companies
No.	%	No.	No.	No.	No.	No.	No.			
0	1	2	3	4	5	6	7	8	9	10
<b>Total ROMÂNIA</b>	<b>2119120</b>	<b>100,0</b>	<b>627656</b>	<b>1471204</b>	<b>2040</b>	<b>5743</b>	<b>1394</b>	<b>2416</b>	<b>8674</b>	<b>X</b>
ALBA	35663	1,7	14673	20551	36	148	38	47	170	24
ARAD	51612	2,4	20733	30241	60	170	30	43	336	15
ARGES	54337	2,6	18827	35070	48	176	31	32	153	10
BACAU	52807	2,5	19367	32823	151	161	35	45	226	12
BIHOR	66034	3,1	19589	45819	63	152	40	62	309	7
BISTRITA-NASAUD	27442	1,3	11417	15713	46	99	29	29	109	29
BOTOSANI	25983	1,2	12803	12640	40	184	21	176	119	32
BRASOV	65339	3,1	16374	48473	58	126	49	87	172	8
BRAILA	29662	1,4	9331	19944	42	102	30	46	167	27
BUZAU	38131	1,8	12398	25332	46	154	28	42	131	22
CARAS-SEVERIN	25609	1,2	9478	15739	42	108	39	65	138	33
CALARASI	21394	1,0	7231	13854	22	92	18	77	100	39
CLUJ	97188	4,6	27839	68770	62	159	52	42	264	2
CONSTANTA	86981	4,1	19190	66847	88	211	51	51	543	3
COVASNA	18145	0,9	7300	10568	41	71	24	32	109	41
DAMBOVITA	39691	1,9	18998	20260	32	140	30	75	156	21
DOLJ	56205	2,7	14349	41345	39	170	40	58	204	9
GALATI	50421	2,4	13146	36876	35	140	30	51	143	16
GIURGIU	17853	0,8	4656	12854	15	84	23	110	111	42
GORJ	25086	1,2	7331	17311	26	184	51	83	100	34
HARGHITA	33117	1,6	15142	17519	64	93	24	43	232	26
HUNEDOARA	43238	2,0	13168	29529	33	84	42	95	287	18
IALOMITA	19661	0,9	7869	11530	27	83	15	46	91	40
IASI	70708	3,3	24072	45926	87	170	34	77	344	5
MARAMURES	53326	2,5	22747	30205	43	129	38	41	124	11
MEHEDINTI	23777	1,1	9028	14496	19	89	19	27	99	36
MURES	52650	2,5	21117	31072	68	160	30	34	169	13
NEAMT	44810	2,1	17549	26803	66	166	30	30	166	17
OLT	29299	1,4	11882	17011	27	166	26	64	123	28
PRAHOVA	70579	3,3	24088	45842	67	184	52	74	272	6
SALAJ	21422	1,0	9265	11895	41	110	19	28	64	38
SATU MARE	36104	1,7	13301	22466	41	100	21	42	134	23
SIBIU	41716	2,0	12629	28624	37	121	34	110	161	20
SUCEAVA	52299	2,5	25574	26115	73	218	31	67	221	14
TELEORMAN	24596	1,2	9394	14754	33	164	21	46	184	35
TIMIS	74998	3,5	15011	59305	69	155	38	69	351	4
TULCEA	21578	1,0	8354	12848	36	67	19	42	212	37
VASLUI	26190	1,2	13157	12705	22	113	16	41	136	31
VALCEA	34098	1,6	14573	19093	64	171	42	40	115	25
VRANCEA	26219	1,2	9171	16739	35	115	17	28	114	30
MUN. BUCURESTI	391062	18,5	39365	350114	64	156	116	106	1142	1
ILFOV	42089	2,0	6170	35583	31	98	21	13	173	19

\*) The total number of incorporations (col 1)

Table no. 5

**Number of incorporations in the trade registers by counties and business categories during December 1990 – March 2011**

County	Total		out of which:							
			PF	companies: 1482294				RA	SC	APJ
	SNC	SCS		SRL	SA					
	No.	%	No.	No.	No.	No.	No.	No.	No.	
0	1	2	3	4	5	6	7	8	9	10
<b>Total ROMANIA</b>	<b>2119120</b>	<b>100,0</b>	<b>627656</b>	<b>32680</b>	<b>1621</b>	<b>1413935</b>	<b>34051</b>	<b>1394</b>	<b>2040</b>	<b>5743</b>
ALBA	35663	1,7	14673	890	11	19292	575	38	36	148
ARAD	51612	2,4	20733	54	13	29841	711	30	60	170
ARGES	54337	2,6	18827	107	15	34288	845	31	48	176
BACAU	52807	2,5	19367	1299	4	31035	755	35	151	161
BIHOR	66034	3,1	19589	127	48	45080	935	40	63	152
BISTRITA-NASAUD	27442	1,3	11417	146	22	15260	423	29	46	99
BOTOSANI	25983	1,2	12803	468	1	12003	463	21	40	184
BRASOV	65305	3,1	16374	239	21	47539	899	49	58	126
BRAILA	29696	1,4	9331	376	12	19262	541	30	42	102
BUZAU	38131	1,8	12398	3747	46	21117	595	28	46	154
CARAS-SEVERIN	25609	1,2	9478	118	9	15339	476	39	42	108
CALARASI	21394	1,0	7231	609	3	13054	365	18	22	92
CLUJ	97188	4,6	27839	2112	21	65577	1366	52	62	159
CONSTANTA	86981	4,1	19190	311	23	65573	1534	51	88	211
COVASNA	18145	0,9	7300	148	4	10243	314	24	41	71
DAMBOVITA	39691	1,9	18998	60	8	19915	508	30	32	140
DOLJ	56205	2,7	14349	1560	8	39116	923	40	39	170
GALATI	50421	2,4	13146	1574	6	34621	869	30	35	140
GIURGIU	17852	0,8	4656	35	8	12696	335	23	15	84
GORJ	25087	1,2	7331	29	1	16957	508	51	26	184
HARGHITA	33117	1,6	15142	62	7	17221	504	24	64	93
HUNEDOARA	43238	2,0	13168	1166	98	27950	697	42	33	84
IALOMITA	19661	0,9	7869	269	12	11031	355	15	27	83
IASI	70708	3,3	24072	508	111	44680	1046	34	87	170
MARAMURES	53326	2,5	22747	1927	23	27805	614	38	43	129
MEHEDINTI	23777	1,1	9028	427	3	13847	345	19	19	89
MURES	52650	2,5	21117	37	34	30514	690	30	68	160
NEAMT	44810	2,1	17549	3293	30	22989	687	30	66	166
OLT	29299	1,4	11882	1611	1	15081	505	26	27	166
PRAHOVA	70579	3,3	24088	3122	15	42106	945	52	67	184
SALAJ	21422	1,0	9265	600	4	11082	301	19	41	110
SATU MARE	36104	1,7	13301	283	9	21866	483	21	41	100
SIBIU	41716	2,0	12629	778	49	27382	686	34	37	121
SUCEAVA	52299	2,5	25574	438	8	25352	605	31	73	218
TELEORMAN	24596	1,2	9394	272	399	13876	437	21	33	164
TIMIS	74998	3,5	15011	616	35	57779	1295	38	69	155
TULCEA	21578	1,0	8354	1363	114	11139	486	19	36	67
VASLUI	26190	1,2	13157	90	13	12352	427	16	22	113
VALCEA	34098	1,6	14573	364	6	18368	510	42	64	171
VRANCEA	26219	1,2	9171	356	10	16047	468	17	35	115
MUN. BUCURESTI	391062	18,5	39365	1039	322	342672	7328	116	64	156
ILFOV	42089	2,0	6170	50	34	34988	697	21	31	98

Table no. 6

**Operations performed in the trade registers by counties and categories of registration in the month of March 2011**

County	Total of operations carried on		out of which:					
			New incorporations		Changes in statutory documents		Strike off companies	
	No.	%	No.	%	No.	%	No.	%
0	1	2	3	4	5	6	7	8
<b>Total ROMÂNIA</b>	<b>87413</b>	<b>100,0</b>	<b>14482</b>	<b>16,6</b>	<b>65994</b>	<b>75,5</b>	<b>6937</b>	<b>7,9</b>
ALBA	1356	100,0	310	22,9	936	69,0	110	8,1
ARAD	1895	100,0	418	22,1	1313	69,3	164	8,7
ARGES	1971	100,0	389	19,7	1423	72,2	159	8,1
BACAU	1514	100,0	343	22,7	1020	67,4	151	10,0
BIHOR	2795	100,0	548	19,6	1991	71,2	256	9,2
BISTRITA-NASAUD	1068	100,0	172	16,1	817	76,5	79	7,4
BOTOSANI	940	100,0	153	16,3	686	73,0	101	10,7
BRASOV	3118	100,0	458	14,7	2478	79,5	182	5,8
BRAILA	967	100,0	220	22,8	634	65,6	113	11,7
BUZAU	1980	100,0	261	13,2	1409	71,2	310	15,7
CARAS-SEVERIN	773	100,0	154	19,9	489	63,3	130	16,8
CALARASI	777	100,0	161	20,7	524	67,4	92	11,8
CLUJ	3713	100,0	692	18,6	2610	70,3	411	11,1
CONSTANTA	4190	100,0	477	11,4	3471	82,8	242	5,8
COVASNA	756	100,0	133	17,6	469	62,0	154	20,4
DAMBOVITA	1023	100,0	247	24,1	675	66,0	101	9,9
DOLJ	3184	100,0	483	15,2	2454	77,1	247	7,8
GALATI	2290	100,0	363	15,9	1663	72,6	264	11,5
GIURGIU	694	100,0	139	20,0	525	75,6	30	4,3
GORJ	847	100,0	192	22,7	597	70,5	58	6,8
HARGHITA	1185	100,0	192	16,2	861	72,7	132	11,1
HUNEDOARA	1855	100,0	283	15,3	1459	78,7	113	6,1
IALOMITA	661	100,0	136	20,6	482	72,9	43	6,5
IASI	3162	100,0	564	17,8	2305	72,9	293	9,3
MARAMURES	1688	100,0	333	19,7	1242	73,6	113	6,7
MEHEDINTI	1058	100,0	169	16,0	832	78,6	57	5,4
MURES	2057	100,0	336	16,3	1507	73,3	214	10,4
NEAMT	1438	100,0	258	17,9	1081	75,2	99	6,9
OLT	988	100,0	181	18,3	736	74,5	71	7,2
PRAHOVA	2685	100,0	435	16,2	2015	75,0	235	8,8
SALAJ	905	100,0	189	20,9	660	72,9	56	6,2
SATU MARE	1670	100,0	269	16,1	1232	73,8	169	10,1
SIBIU	1954	100,0	294	15,0	1560	79,8	100	5,1
SUCEAVA	1798	100,0	341	19,0	1318	73,3	139	7,7
TELEORMAN	759	100,0	189	24,9	514	67,7	56	7,4
TIMIS	3284	100,0	552	16,8	2559	77,9	173	5,3
TULCEA	951	100,0	203	21,3	677	71,2	71	7,5
VASLUI	1102	100,0	164	14,9	794	72,1	144	13,1
VALCEA	1386	100,0	262	18,9	1002	72,3	122	8,8
VRANCEA	1086	100,0	193	17,8	805	74,1	88	8,1
MUN. BUCURESTI	17370	100,0	2178	12,5	14204	81,8	988	5,7
ILFOV	2520	100,0	448	17,8	1965	78,0	107	4,2

\*) by effect of implementation of Law no. 314/2001, art.1 and art. 6

Table no.7

**Number of incorporations in the trade registers by counties and capital sources in the month of March 2011**

County	Total		out of which:						Rnking by: *	
			Private capital				State majority capital			Mixed capital (state+privat e)
			out of which:				out of which:			
			PF	Companies	SC	APJ	RA	Companies		Companies
No.	%	No.	No.	No.		No.	No.	No.		
0	1	2	3	4	5		6	7	8	9
<b>Total ROMÂNIA</b>	<b>14482</b>	<b>100,0</b>	<b>6729</b>	<b>7736</b>	<b>1</b>	<b>16</b>				<b>X</b>
ALBA	310	2,1	197	113						18
ARAD	418	2,9	228	190						11
ARGES	389	2,7	198	190		1				12
BACAU	343	2,4	160	183						14
BIHOR	548	3,8	288	260						5
BISTRITA-NASAUD	172	1,2	88	84						34
BOTOSANI	153	1,1	94	57		2				39
BRASOV	458	3,2	164	294						8
BRAILA	220	1,5	118	100		2				26
BUZAU	261	1,8	121	140						23
CARAS-SEVERIN	154	1,1	75	79						38
CALARASI	161	1,1	94	66		1				37
CLUJ	692	4,8	291	400		1				2
CONSTANTA	477	3,3	187	289	1					7
COVASNA	133	0,9	78	54		1				42
DAMBOVITA	247	1,7	158	89						25
DOLJ	483	3,3	231	251		1				6
GALATI	363	2,5	209	154						13
GIURGIU	139	1,0	63	76						40
GORJ	192	1,3	109	83						29
HARGHITA	192	1,3	115	76		1				30
HUNEDOARA	283	2,0	131	152						20
IALOMITA	136	0,9	68	68						41
IASI	564	3,9	297	266		1				3
MARAMURES	333	2,3	188	144		1				17
MEHEDINTI	169	1,2	112	57						35
MURES	336	2,3	155	181						16
NEAMT	258	1,8	156	102						24
OLT	181	1,2	88	93						33
PRAHOVA	435	3,0	193	242						10
SALAJ	189	1,3	118	71						31
SATU MARE	269	1,9	135	132		2				21
SIBIU	294	2,0	146	148						19
SUCEAVA	341	2,4	198	142		1				15
TELEORMAN	189	1,3	111	78						32
TIMIS	552	3,8	233	319						4
TULCEA	203	1,4	136	67						27
VASLUI	164	1,1	100	64						36
VALCEA	262	1,8	187	75						22
VRANCEA	193	1,3	100	93						28
MUN. BUCURESTI	2178	15,0	520	1657		1				1
ILFOV	448	3,1	91	357						9

\*) The total number of incorporations (col 1)

\*\*\* Less than 0,01%

Table no.8

**Number of incorporations in the trade registers by counties and business categories in the month of March 2011**

County	Total		out of which:							
			PF	companies: 7736				RA	SC	APJ
	SNC	SCS		SRL	SA					
	No.	%	No.	No.	No.	No.	No.	No.		
0	1	2	3	4	5	6	7	8	9	10
<b>Total ROMÂNIA</b>	<b>14482</b>	<b>100,0</b>	<b>6729</b>		<b>1</b>	<b>7715</b>	<b>20</b>		<b>1</b>	<b>16</b>
ALBA	310	2,1	197			113				
ARAD	418	2,9	228			188	2			
ARGES	389	2,7	198			190				1
BACAU	343	2,4	160			183				
BIHOR	548	3,8	288			260				
BISTRITA-NASAUD	172	1,2	88			84				
BOTOSANI	153	1,1	94			57				2
BRASOV	458	3,2	164			293	1			
BRAILA	220	1,5	118			100				2
BUZAU	261	1,8	121			140				
CARAS-SEVERIN	154	1,1	75			78	1			
CALARASI	161	1,1	94			66				1
CLUJ	692	4,8	291			399	1			1
CONSTANTA	477	3,3	187			288	1		1	
COVASNA	133	0,9	78			52	2			1
DAMBOVITA	247	1,7	158			89				
DOLJ	483	3,3	231			251				1
GALATI	363	2,5	209			154				
GIURGIU	139	1,0	63			76				
GORJ	192	1,3	109			83				
HARGHITA	192	1,3	115			76				1
HUNEDOARA	283	2,0	131			152				
IALOMITA	136	0,9	68			68				
IASI	564	3,9	297			266				1
MARAMURES	333	2,3	188			142	2			1
MEHEDINTI	169	1,2	112			57				
MURES	336	2,3	155			181				
NEAMT	258	1,8	156			102				
OLT	181	1,2	88			93				
PRAHOVA	435	3,0	193			241	1			
SALAJ	189	1,3	118			71				
SATU MARE	269	1,9	135			131	1			2
SIBIU	294	2,0	146			147	1			
SUCEAVA	341	2,4	198			142				1
TELEORMAN	189	1,3	111			78				
TIMIS	552	3,8	233		1	318				
TULCEA	203	1,4	136			67				
VASLUI	164	1,1	100			64				
VALCEA	262	1,8	187			74	1			
VRANCEA	193	1,3	100			93				
MUN. BUCURESTI	2178	15,0	520			1652	5			1
ILFOV	448	3,1	91			356	1			

Table no. 9

**Number of incorporations in the trade registers by domains of activity and business categories in the month of March 2011**

CAEN segment	Field of activity	Total		out of which:								
				PF	companies: 7736				RA	SC	APJ	
		No.	%		No.	SNC	SCS	SRL				SA
				No.		No.	No.	No.	No.	No.	No.	
0	1	2	3	4	5	6	7	8	9	10	11	
	<b>Total ROMÂNIA</b>	<b>14482</b>	<b>100,0</b>	<b>6729</b>		<b>1</b>	<b>7715</b>	<b>20</b>			<b>1</b>	<b>16</b>
1	Agriculture, hunting and related service activities	1457	10,1	1221			228	1				7
2	Forestry and logging	144	1,0	47			97					
3	Fishing and aquaculture	68	0,5	57			11					
5	Mining of hard and brown coal	1	0,0				1					
6	Extraction of crude petroleum and natural gas											
7	Mining of metal ores	1	0,0				1					
8	Other mining and quarrying	19	0,1				19					
9	Mining support service activities											
10	Manufacture of food products	236	1,6	62			170					4
11	Manufacture of beverages	24	0,2	13			11					
12	Manufacture of tobacco products	1	0,0				1					
13	Manufacture of textiles	19	0,1	9			10					
14	Manufacture of wearing apparel	97	0,7	34			63					
15	Tanning and dressing of leather; manufacture of luggage, handbags, saddlery, harness and footwear; dressing and dyeing of fur	18	0,1	4			14					
16	Manufacture of wood and of products of wood and cork, except furniture; manufacture of articles of straw and plaiting materials	194	1,3	77			117					
17	Manufacture of paper and paper products	10	0,1	1			9					
18	Printing and reproduction of recorded media	35	0,2	11			24					
19	Manufacture of coke and refined petroleum products	1	0,0				1					
20	Manufacture of chemicals and chemical products	16	0,1	1			15					
21	Manufacture of basic pharmaceutical products and pharmaceutical preparations	3	0,0				3					
22	Manufacture of rubber and plastic products	52	0,4	10			41					1
23	Manufacture of other non-metallic mineral products	80	0,6	37			42	1				
24	Manufacture of basic metals	4	0,0	1			3					
25	Manufacture of fabricated metal products, except machinery and equipment	157	1,1	86			71					
26	Manufacture of computer, electronic and optical products	4	0,0	2			2					
27	Manufacture of electrical equipment	10	0,1				10					
28	Manufacture of machinery and equipment n.e.c.	11	0,1	1			9	1				
29	Manufacture of motor vehicles, trailers and semi-trailers	2	0,0				2					
30	Manufacture of other transport equipment	9	0,1				9					
31	Manufacture of furniture	73	0,5	21			52					
32	Other manufacturing	59	0,4	31			28					
33	Repair and installation of machinery and equipment	54	0,4	20			33	1				
35	Electricity, gas, steam and air conditioning supply	81	0,6				80	1				
36	Water collection, treatment and supply	7	0,0				7					
37	Sewerage	6	0,0	1			5					
38	Waste collection, treatment and disposal activities; materials recovery	28	0,2	1			27					
39	Remediation activities and other waste management services											
41	Construction of buildings	777	5,4	52			723	2				
42	Civil engineering	53	0,4	2			51					
43	Specialised construction activities	526	3,6	122			403	1				
45	Wholesale and retail trade and repair of motor vehicles and motorcycles	270	1,9	39			231					1
46	Wholesale trade, except of motor vehicles and motorcycles	1057	7,3	207			850					3
47	Retail trade, except of motor vehicles and motorcycles	1759	12,1	590			1165	3		1		
49	Land transport and transport via pipelines	551	3,8	198			353					
50	Water transport	5	0,0	1			4					



Table no. 10

**Number of incorporated trading companies and the value of the subscribed share capital, by counties, in the month of March 2011**

County	Total registered companies		Subscribed capital		Average subscribed capital on company
	No.	%	thousand Lei	%	thousand Lei
0	1	2	3	4	5
Total ROMÂNIA	7736	100,0	317610,0	100,0	41,1
ALBA	113	1,5	24,1	***	0,2
ARAD	190	2,5	149,9	0,0	0,8
ARGES	190	2,5	221,2	0,1	1,2
BACAU	183	2,4	403,9	0,1	2,2
BIHOR	260	3,4	1551,5	0,5	6,0
BISTRITA-NASAUD	84	1,1	22,6	***	0,3
BOTOSANI	57	0,7	13,9	***	0,2
BRASOV	294	3,8	441,4	0,1	1,5
BRAILA	100	1,3	20,5	***	0,2
BUZAU	140	1,8	101,8	0,0	0,7
CARAS-SEVERIN	79	1,0	500,6	0,2	6,3
CALARASI	66	0,9	86,6	0,0	1,3
CLUJ	400	5,2	818,5	0,3	2,0
CONSTANTA	289	3,7	7777,4	2,4	26,9
COVASNA	54	0,7	957,7	0,3	17,7
DAMBOVITA	89	1,2	235,9	0,1	2,7
DOLJ	251	3,2	156,3	0,0	0,6
GALATI	154	2,0	1874,6	0,6	12,2
GIURGIU	76	1,0	210081,5	66,1	2764,2
GORJ	83	1,1	19,7	***	0,2
HARGHITA	76	1,0	62,0	0,0	0,8
HUNEDOARA	152	2,0	43,6	0,0	0,3
IALOMITA	68	0,9	37,6	0,0	0,6
IASI	266	3,4	191,9	0,1	0,7
MARAMURES	144	1,9	11125,2	3,5	77,3
MEHEDINTI	57	0,7	22,5	***	0,4
MURES	181	2,3	45,8	0,0	0,3
NEAMT	102	1,3	432,8	0,1	4,2
OLT	93	1,2	41,0	0,0	0,4
PRAHOVA	242	3,1	1413,5	0,4	5,8
SALAJ	71	0,9	91,8	0,0	1,3
SATU MARE	132	1,7	38,9	0,0	0,3
SIBIU	148	1,9	440,1	0,1	3,0
SUCEAVA	142	1,8	47,4	0,0	0,3
TELEORMAN	78	1,0	39,2	0,0	0,5
TIMIS	319	4,1	364,5	0,1	1,1
TULCEA	67	0,9	15,7	***	0,2
VASLUI	64	0,8	319,0	0,1	5,0
VALCEA	75	1,0	55,3	0,0	0,7
VRANCEA	93	1,2	79,2	0,0	0,9
MUN. BUCURESTI	1657	21,4	54303,8	17,1	32,8
ILFOV	357	4,6	22939,9	7,2	64,3

*Note: The average does not include filials because according to the Law no. 31/1990 they are not juridical persons*

\*\*\* Less than 0,01%

Table no. 11

**Number of incorporated trading companies and the value of the subscribed share capital by legal forms, in the month of March 2011**

Company type	Total registered companies		Subscribed capital		Average subscribed capital on company
	No.	%	thousand Lei	%	thousand Lei
0	1	2	3	4	5
<b>Total ROMANIA</b>	<b>7736</b>	<b>100,0</b>	<b>317610,0</b>	<b>100,0</b>	<b>41,1</b>
<b>SNC</b>					
<b>SCS</b>	1	0,0	0,2	***	
<b>SA</b>	20	0,3	46720,4	14,7	3337,2
<b>SRL</b>	7715	99,7	270889,4	85,3	35,1

**Note:** The average does not include filials because according to the Law no. 31/1990 they are not juridical persons

\*\*\* Less than 0,01%

Diagram no.5

