



MINISTRY OF JUSTICE

THE NATIONAL TRADE REGISTER OFFICE

București, Bd. Unirii nr. 74, Bl. J3b, tronson II+III, sector 3; Telefon: +40 21 316.08.04, 316.08.10; Fax: +40 21 316.08.03; Cod poștal: 030837
Website: www.onrc.ro; E-mail: onrc@onrc.ro; Cod identificare Fiscală: 14942091

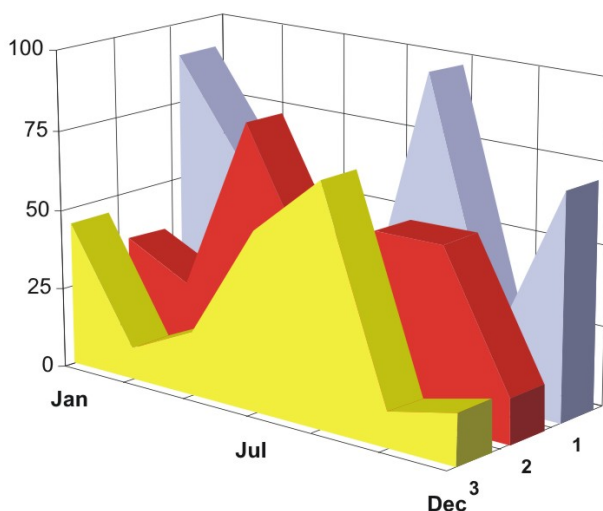
OPERATIONS IN THE CENTRAL TRADE REGISTER

STATISTIC SYNTHESIS

OF

RECORDS IN THE CENTRAL TRADE REGISTER

- 28th February 2011 - provisional data -



- ISSUE No. 231 -

**MINISTRY OF JUSTICE
THE NATIONAL TRADE REGISTER OFFICE**

- Operations such as incorporation of trading companies, submission of changes, and strike-off are carried out based on Law No.26/1990, as republished, Law No.31/1990, as republished and on the Methodological Norms no. P/608/1998.

- This work reflects the evolution of the operations with the Trade Register Office attached to Bucharest Law Court and the Trade Register Offices attached to County Law Courts.

- The data contained in the Central Trade Register refer to operations for which law sets out the obligation of being registered in the trade registers kept by the 42 trade register offices attached to law courts.

<ul style="list-style-type: none">• <i>The content of this publication shall not be reproduced, partly or entirely, in original or modified form, and shall not be stored in a recovery system and shall not be transmitted in any form or by any means without prior written authorization of the Ministry of Justice – The National Trade Register Office.</i>• <i>The content of this publication December be used in articles, studies, books, as supporting or explanatory data only by clearly and accurately indicating the source.</i>

CONTENTS

Page

1	Definitions	1
2.1	Data related to the period December 1990 –February 2011	3
	Table no. 1 – Operations performed in the trade registers by categories of registration during December 1990 –February 2011, total by country and by counties, shares of counties in the total by country	3
	Table no. 2 – Operations performed in the trade registers by categories of registration during 1990 –February 2011, total by country and counties, share of categories of operations in the total of each county	4
	Table no. 3 – Number and structure of incorporations in the trade registers during 1990-February 2011	5
	Chart no. 1 – Structure by years of incorporations in the trade register	
	Table no. 4 – Number of incorporations in the trade registers by counties and capital sources during 1990 - February 2011	6
	Table no. 5 – Number of incorporations in the trade registers by counties and business categories during 1990 –February 2011	7
2.2	Data related to February 2011	8
	Table no. 6 – Operations performed in the trade registers by counties and categories of registrations in the month of February 2011	8
	Table no. 7 – Number of incorporations in the trade registers by counties and capital sources in the month of February 2011	9
	Table no. 8 – Number of incorporations in the trade registers by counties and business categories in the month of February 2011	10
	Table no. 9 –Number of incorporations in the trade registers by domains of activity and business categories in the month of February 2011	11-12
	Table no. 10 – Number of incorporated trading companies and the value of subscribed share capital, by counties, in the month of February 2011	13
	Table no. 11– Number of incorporated trading companies and the value of subscribed share capital by legal forms, in the month of February 2011	14
	Chart no. 5 – Average value of subscribed share capital by types of trading companies in the month of February 2011	14

Definitions

The Trade Register Office was established based on Law No. 26/1990, as republished and subsequently amended and supplemented, operates as an active institution since 1990 and is twofold structured:

- at national level, represented by the National Trade Register Office organized under the authority of the Ministry of Justice
- at local level, represented by the 42 Trade Register Offices attached to Law Courts, organized under the subordination of the National Trade Register Office

Categories of persons liable to registration in the trade register:

- natural persons: authorized natural persons, individual enterprises and family enterprises currently carrying on trading activities;
- legal persons represented by: Trading Companies, National Societies and Companies, National R&D Institutes, Autonomous Administrations, Co-operative Societies, Agricultural Co-operatives, Co-operative Organizations, Economic Interest Groupings, European Economic Interest Groupings, European Societies, European Co-operative Societies, branches of trading companies with legal establishment, operation and incorporation regime of trading company legal form under which they were incorporated.

• Terms used in tables and charts

➤ **Number of companies**, depending on the table, represents the number of trading companies incorporated during the reference period, the number of trading companies struck-off from the trade register. The following forms of organization are included: limited liability companies, joint-stock companies, limited partnerships by share, limited partnerships, general partnerships, and branches thereof.

➤ **Value of subscribed share capital:**

- **total, expressed in national currency:** the share capital value resulted by adding up the subscribed values (in cash and in kind) in national currency (lei)

➤ **Regions of economic development:**

North-East: Suceava, Botoșani, Neamț, Iași, Bacău, Vaslui.

South-East: Vrancea, Galați, Buzău, Brăila, Tulcea, Constanța.

South-Muntenia: Argeș, Dâmbovița, Prahova, Teleorman, Giurgiu, Călărași, Ialomița.

South-West Oltenia: Gorj, Vâlcea, Dolj, Mehedinți, Olt.

West: Arad, Caraș-Severin, Hunedoara, Timiș.

North-West: Bihor, Bistrița, Cluj, Satu Mare, Sălaj, Maramureș.

Center: Alba, Brașov, Covasna, Harghita, Mureș, Sibiu.

Bucharest-Ilfov: București, Ilfov.

NACE Code – The classification of economic activities in the national economy was approved by GO No. 656/1997, amended by Order No 601/2002 and Order no. 337/2007 of the President of the National Institute of Statistics, and complies with the international classification used in statistic reports and official documents. The activities are ranked by the harmonization principle, by sections, divisions, groups and classes.

Abbreviations

- **PF** - Natural Person; the following forms of organization are included in this category: natural persons and family associations registered until 25.04.2008, authorized natural persons, individual enterprises and family enterprises.
- **SNC** - General Partnership
- **SCS** - Limited Partnership
- **SCA** - Limited Partnership by Share
- **SA** - Joint-Stock Company
- **SRL** - Limited Liability Company
- **RA** - Autonomous Administration
- **APJ** - Other legal persons having the obligation to register in the trade register: National R&D Institutes, Economic Interest Groupings, European Economic Interest Groupings, European Societies, European Co-operative Societies, Agricultural Co-operatives, Co-operative Organizations.

Sources of Information:

The integrated IT system of the trade register is designed by The National Trade Register Office in compliance with the provisions of the related legislation in force. The source of information consists of the trade registers organized in computerized system, kept by the trade register offices attached to law courts.

Table no. 1

**Operations performed in the trade registers by categories of registration during
December 1990 – February 2011, total by country and by counties, share of
counties in the total by country**

Counties	Total of registered operations		out of which :					
			Registered companies		Changes in statutory documents		Strike off companies	
	No.	%	No.	%	No.	%	No.	%
0	1	2	3	4	5	6	7	8
Total ROMÂNIA	14690470	100,0	2104623	100,0	11764752	100,0	821095	100,0
ALBA	222528	1,5	35353	1,7	175390	1,5	11785	1,4
ARAD	347191	2,4	51194	2,4	275330	2,3	20667	2,5
ARGES	355277	2,4	53948	2,6	284942	2,4	16387	2,0
BACAU	341477	2,3	52465	2,5	266266	2,3	22746	2,8
BIHOR	445556	3,0	65486	3,1	357783	3,0	22287	2,7
BISTRITA-NASAUD	178317	1,2	27271	1,3	140589	1,2	10457	1,3
BOTOSANI	137922	0,9	25830	1,2	101030	0,9	11062	1,3
BRASOV	570230	3,9	64847	3,1	483095	4,1	22288	2,7
BRAILA	225611	1,5	29476	1,4	187395	1,6	8740	1,1
BUZAU	254078	1,7	37870	1,8	199779	1,7	16429	2,0
CARAS-SEVERIN	170705	1,2	25455	1,2	133069	1,1	12181	1,5
CALARASI	134212	0,9	21233	1,0	103946	0,9	9033	1,1
CLUJ	650678	4,4	96496	4,6	522997	4,4	31185	3,8
CONSTANTA	627810	4,3	86504	4,1	504961	4,3	36345	4,4
COVASNA	126611	0,9	18012	0,9	101357	0,9	7242	0,9
DAMBOVITA	211489	1,4	39444	1,9	153080	1,3	18965	2,3
DOLJ	395823	2,7	55722	2,6	318254	2,7	21847	2,7
GALATI	372621	2,5	50058	2,4	301870	2,6	20693	2,5
GIURGIU	116289	0,8	17713	0,8	91164	0,8	7412	0,9
GORJ	223790	1,5	24895	1,2	189029	1,6	9866	1,2
HARGHITA	220605	1,5	32925	1,6	176742	1,5	10938	1,3
HUNEDOARA	294471	2,0	42955	2,0	233479	2,0	18037	2,2
IALOMITA	135428	0,9	19525	0,9	106120	0,9	9783	1,2
IASI	486214	3,3	70144	3,3	391967	3,3	24103	2,9
MARAMURES	312505	2,1	52993	2,5	236162	2,0	23350	2,8
MEHEDINTI	149666	1,0	23608	1,1	115424	1,0	10634	1,3
MURES	405515	2,8	52314	2,5	331904	2,8	21297	2,6
NEAMT	311741	2,1	44552	2,1	246744	2,1	20445	2,5
OLT	175595	1,2	29118	1,4	133693	1,1	12784	1,6
PRAHOVA	496271	3,4	70144	3,3	398454	3,4	27673	3,4
SALAJ	131683	0,9	21233	1,0	101826	0,9	8624	1,1
SATU MARE	229648	1,6	35835	1,7	178555	1,5	15258	1,9
SIBIU	320155	2,2	41423	2,0	263453	2,2	15279	1,9
SUCEAVA	347216	2,4	51958	2,5	269901	2,3	25357	3,1
TELEORMAN	157196	1,1	24407	1,2	123578	1,1	9211	1,1
TIMIS	491596	3,3	74446	3,5	391860	3,3	25290	3,1
TULCEA	173379	1,2	21375	1,0	142585	1,2	9419	1,1
VASLUI	182784	1,2	26026	1,2	144074	1,2	12684	1,5
VALCEA	225357	1,5	33836	1,6	175825	1,5	15696	1,9
VRANCEA	179929	1,2	26026	1,2	145768	1,2	8135	1,0
MUN. BUCURESTI	2914188	19,8	388874	18,5	2376517	20,2	148797	18,1
ILFOV	241113	1,6	41634	2,0	188795	1,6	10684	1,3

*** Less 0,01%

Table no. 2

Operations performed in the trade registers during December 1990 – February 2011, total by country and counties, share of categories of operations in the total of each county

Counties	Total of registered operations		out of which :					
			Registered companies		Changes in statutory documents		Strike off companies	
	No.	%	No.	%	No.	%	No.	%
0	1	2	3	4	5	6	7	8
Total ROMANIA	14690470	100,0	2104623	14,3	11764752	80,1	821095	5,6
ALBA	222528	100,0	35353	15,9	175390	78,8	11785	5,3
ARAD	347191	100,0	51194	14,7	275330	79,3	20667	6,0
ARGES	355277	100,0	53948	15,2	284942	80,2	16387	4,6
BACAU	341477	100,0	52465	15,4	266266	78,0	22746	6,7
BIHOR	445556	100,0	65486	14,7	357783	80,3	22287	5,0
BISTRITA-NASAUD	178317	100,0	27271	15,3	140589	78,8	10457	5,9
BOTOSANI	137922	100,0	25830	18,7	101030	73,3	11062	8,0
BRASOV	570230	100,0	64847	11,4	483095	84,7	22288	3,9
BRAILA	225611	100,0	29476	13,1	187395	83,1	8740	3,9
BUZAU	254078	100,0	37870	14,9	199779	78,6	16429	6,5
CARAS-SEVERIN	170705	100,0	25455	14,9	133069	78,0	12181	7,1
CALARASI	134212	100,0	21233	15,8	103946	77,4	9033	6,7
CLUJ	650678	100,0	96496	14,8	522997	80,4	31185	4,8
CONSTANTA	627810	100,0	86504	13,8	504961	80,4	36345	5,8
COVASNA	126611	100,0	18012	14,2	101357	80,1	7242	5,7
DAMBOVITA	211489	100,0	39444	18,7	153080	72,4	18965	9,0
DOLJ	395823	100,0	55722	14,1	318254	80,4	21847	5,5
GALATI	372621	100,0	50058	13,4	301870	81,0	20693	5,6
GIURGIU	116289	100,0	17713	15,2	91164	78,4	7412	6,4
GORJ	223790	100,0	24895	11,1	189029	84,5	9866	4,4
HARGHITA	220605	100,0	32925	14,9	176742	80,1	10938	5,0
HUNEDOARA	294471	100,0	42955	14,6	233479	79,3	18037	6,1
IALOMITA	135428	100,0	19525	14,4	106120	78,4	9783	7,2
IASI	486214	100,0	70144	14,4	391967	80,6	24103	5,0
MARAMURES	312505	100,0	52993	17,0	236162	75,6	23350	7,5
MEHEDINTI	149666	100,0	23608	15,8	115424	77,1	10634	7,1
MURES	405515	100,0	52314	12,9	331904	81,8	21297	5,3
NEAMT	311741	100,0	44552	14,3	246744	79,2	20445	6,6
OLT	175595	100,0	29118	16,6	133693	76,1	12784	7,3
PRAHOVA	496271	100,0	70144	14,1	398454	80,3	27673	5,6
SALAJ	131683	100,0	21233	16,1	101826	77,3	8624	6,5
SATU MARE	229648	100,0	35835	15,6	178555	77,8	15258	6,6
SIBIU	320155	100,0	41423	12,9	263453	82,3	15279	4,8
SUCEAVA	347216	100,0	51958	15,0	269901	77,7	25357	7,3
TELEORMAN	157196	100,0	24407	15,5	123578	78,6	9211	5,9
TIMIS	491596	100,0	74446	15,1	391860	79,7	25290	5,1
TULCEA	173379	100,0	21375	12,3	142585	82,2	9419	5,4
VASLUI	182784	100,0	26026	14,2	144074	78,8	12684	6,9
VALCEA	225357	100,0	33836	15,0	175825	78,0	15696	7,0
VRANCEA	179929	100,0	26026	14,5	145768	81,0	8135	4,5
MUN. BUCURESTI	2914188	100,0	388874	13,3	2376517	81,5	148797	5,1
ILFOV	241113	100,0	41634	17,3	188795	78,3	10684	4,4

Table no.3

Number and structure of incorporations in the trade registers during December 1990 - February 2011

Period (year, month)	Registered companies	Percentage	
	No.	%	%
0	1	2	3
Total, 28 February 2011, out of which	2104632	100,00	
Year 1990 - 2000	849469	40,36	
Year 2001	61265	2,91	
Year 2002	84780	4,03	
Year 2003	123582	5,87	
Year 2004	144284	6,86	
Year 2005	159464	7,58	
Year 2006	135371	6,43	
Year 2007	144728	6,88	
Year 2008	144173	6,85	
Year 2009	116031	5,51	
Year 2010	122831	5,84	
Year 2011 (I - XII) out of which :	18660	0,89	100,0
January	7783		41,71
February	10877		58,29

Note: Column 2 reveals the annual structure of incorporations; column 3 reveals the structure by months during the current year.

Diagram no.1

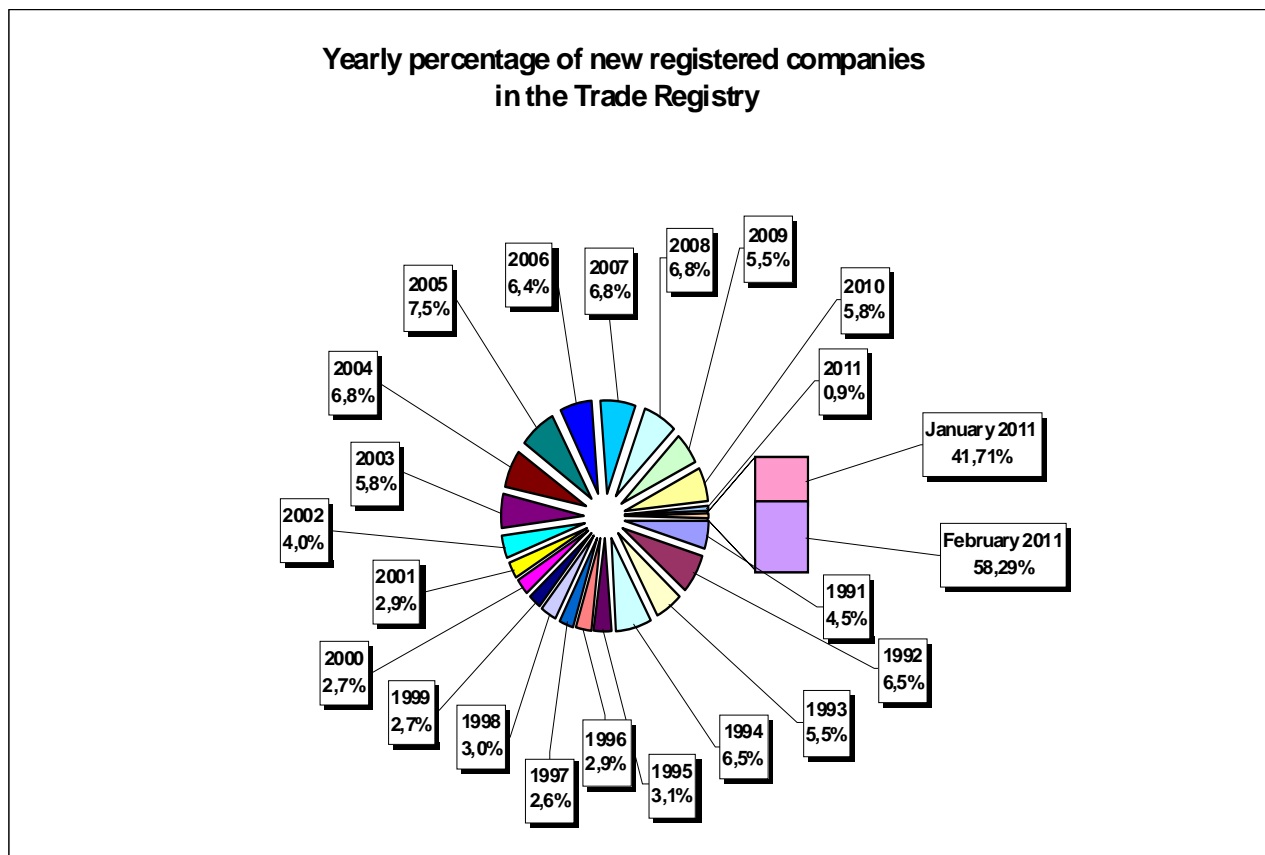


Table no. 4

**Number of incorporations in the trade registers by counties and capital sources during
December 1990 - February 2011**

Counties	Total		out of which:						Ranking by: *	
			Private capital				State majority capital			Mixed capital (state+private)
			out of which:				out of which:			
			PF	Companies	SC	APJ	RA	Companies		Companies
			No.	No.	No.	No.	No.	No.		No.
0	1	2	3	4	5	6	7	8	9	10
Total ROMÂNIA	2104623	100,0	620910	1463468	2041	5727	1394	2416	8674	X
ALBA	35353	1,7	14476	20438	36	148	38	47	170	24
ARAD	51194	2,4	20505	30051	60	170	30	43	336	15
ARGES	53948	2,6	18629	34880	48	175	31	32	153	10
BACAU	52465	2,5	19207	32640	152	161	35	45	226	12
BIHOR	65486	3,1	19301	45559	63	152	40	62	309	7
BISTRITA-NASAUD	27271	1,3	11329	15629	47	99	29	29	109	29
BOTOSANI	25830	1,2	12709	12583	40	182	21	176	119	32
BRASOV	64881	3,1	16210	48179	58	126	49	87	172	8
BRAILA	29442	1,4	9213	19844	42	100	30	46	167	27
BUZAU	37870	1,8	12277	25192	46	154	28	42	131	22
CARAS-SEVERIN	25455	1,2	9403	15660	42	108	39	65	138	33
CALARASI	21233	1,0	7137	13788	22	91	18	77	100	39
CLUJ	96496	4,6	27548	68370	62	158	52	42	264	2
CONSTANTA	86504	4,1	19003	66558	87	211	51	51	543	3
COVASNA	18012	0,9	7222	10514	41	70	24	32	109	41
DAMBOVITA	39444	1,9	18840	20171	32	140	30	75	156	21
DOLJ	55722	2,6	14118	41094	39	169	40	58	204	9
GALATI	50058	2,4	12937	36722	35	140	30	51	143	16
GIURGIU	17714	0,8	4593	12778	15	84	23	110	111	42
GORJ	24894	1,2	7222	17228	26	184	51	83	100	34
HARGHITA	32925	1,6	15027	17443	64	92	24	43	232	26
HUNEDOARA	42955	2,0	13037	29377	33	84	42	95	287	18
IALOMITA	19525	0,9	7801	11462	27	83	15	46	91	40
IASI	70144	3,3	23775	45660	87	169	34	77	344	6
MARAMURES	52993	2,5	22559	30061	43	128	38	41	124	11
MEHEDINTI	23608	1,1	8916	14439	19	89	19	27	99	36
MURES	52314	2,5	20962	30891	68	160	30	34	169	13
NEAMT	44552	2,1	17393	26701	66	166	30	30	166	17
OLT	29118	1,4	11794	16918	27	166	26	64	123	28
PRAHOVA	70144	3,3	23895	45600	67	184	52	74	272	5
SALAJ	21233	1,0	9147	11824	41	110	19	28	64	38
SATU MARE	35835	1,7	13166	22334	41	98	21	42	134	23
SIBIU	41423	2,0	12483	28476	38	121	34	110	161	20
SUCEAVA	51958	2,5	25376	25973	73	217	31	67	221	14
TELEORMAN	24407	1,2	9283	14676	33	164	21	46	184	35
TIMIS	74446	3,5	14778	58986	69	155	38	69	351	4
TULCEA	21375	1,0	8218	12781	36	67	19	42	212	37
VASLUI	26026	1,2	13057	12641	22	113	16	41	136	30
VALCEA	33836	1,6	14386	19018	64	171	42	40	115	25
VRANCEA	26026	1,2	9071	16646	35	115	17	28	114	31
MUN. BUCURESTI	388874	18,5	38835	348457	64	155	116	106	1142	1
ILFOV	41634	2,0	6072	35226	31	98	21	13	173	19

*) The total number of incorporations (col 1)

Table no. 5

**Number of incorporations in the trade registers by counties and business categories
during December 1990 – February 2011**

County	Total		out of which:							
			PF	companies: 1474558				RA	SC	APJ
	SNC	SCS		SRL	SA					
	No.	%	No.	No.	No.	No.	No.	No.	No.	
0	1	2	3	4	5	6	7	8	9	10
Total ROMANIA	2104623	100,0	620910	32680	1620	1406220	34031	1394	2041	5727
ALBA	35353	1,7	14476	890	11	19179	575	38	36	148
ARAD	51194	2,4	20505	54	13	29653	709	30	60	170
ARGES	53948	2,6	18629	107	15	34098	845	31	48	175
BACAU	52465	2,5	19207	1299	4	30852	755	35	152	161
BIHOR	65486	3,1	19301	127	48	44820	935	40	63	152
BISTRITA-NASAUD	27271	1,3	11329	146	22	15176	423	29	47	99
BOTOSANI	25830	1,2	12709	468	1	11946	463	21	40	182
BRASOV	64847	3,1	16210	239	21	47246	898	49	58	126
BRAILA	29476	1,4	9213	376	12	19162	541	30	42	100
BUZAU	37870	1,8	12277	3747	46	20977	595	28	46	154
CARAS-SEVERIN	25455	1,2	9403	118	9	15261	475	39	42	108
CALARASI	21233	1,0	7137	609	3	12988	365	18	22	91
CLUJ	96496	4,6	27548	2112	21	65178	1365	52	62	158
CONSTANTA	86504	4,1	19003	311	23	65285	1533	51	87	211
COVASNA	18012	0,9	7222	148	4	10191	312	24	41	70
DAMBOVITA	39444	1,9	18840	60	8	19826	508	30	32	140
DOLJ	55722	2,6	14118	1560	8	38865	923	40	39	169
GALATI	50058	2,4	12937	1574	6	34467	869	30	35	140
GIURGIU	17713	0,8	4593	35	8	12620	335	23	15	84
GORJ	24895	1,2	7222	29	1	16874	508	51	26	184
HARGHITA	32925	1,6	15027	62	7	17145	504	24	64	92
HUNEDOARA	42955	2,0	13037	1166	98	27798	697	42	33	84
IALOMITA	19525	0,9	7801	269	12	10963	355	15	27	83
IASI	70144	3,3	23775	508	111	44414	1046	34	87	169
MARAMURES	52993	2,5	22559	1927	23	27663	612	38	43	128
MEHEDINTI	23608	1,1	8916	427	3	13790	345	19	19	89
MURES	52314	2,5	20962	37	34	30333	690	30	68	160
NEAMT	44552	2,1	17393	3293	30	22887	687	30	66	166
OLT	29118	1,4	11794	1611	1	14988	505	26	27	166
PRAHOVA	70144	3,3	23895	3122	15	41865	944	52	67	184
SALAJ	21233	1,0	9147	600	4	11011	301	19	41	110
SATU MARE	35835	1,7	13166	283	9	21735	482	21	41	98
SIBIU	41423	2,0	12483	778	49	27235	685	34	38	121
SUCEAVA	51958	2,5	25376	438	8	25210	605	31	73	217
TELEORMAN	24407	1,2	9283	272	399	13798	437	21	33	164
TIMIS	74446	3,5	14778	616	34	57461	1295	38	69	155
TULCEA	21375	1,0	8218	1363	114	11072	486	19	36	67
VASLUI	26026	1,2	13057	90	13	12288	427	16	22	113
VALCEA	33836	1,6	14386	364	6	18294	509	42	64	171
VRANCEA	26026	1,2	9071	356	10	15954	468	17	35	115
MUN. BUCURESTI	388874	18,5	38835	1039	322	341020	7323	116	64	155
ILFOV	41634	2,0	6072	50	34	34632	696	21	31	98

Table no. 6

Operations performed in the trade registers by counties and categories of registration in the month of February 2011

County	Total of operations carried on		out of which:					
			New incorporations		Changes in statutory documents		Strike off companies	
	No.	%	No.	%	No.	%	No.	%
0	1	2	3	4	5	6	7	8
Total ROMÂNIA	63892	100,0	10877	17,0	46845	73,3	6170	9,7
ALBA	926	100,0	166	17,9	693	74,8	67	7,2
ARAD	1500	100,0	219	14,6	1122	74,8	159	10,6
ARGES	1539	100,0	327	21,2	1106	71,9	106	6,9
BACAU	1280	100,0	275	21,5	910	71,1	95	7,4
BIHOR	2104	100,0	406	19,3	1496	71,1	202	9,6
BISTRITA-NASAUD	840	100,0	131	15,6	634	75,5	75	8,9
BOTOSANI	736	100,0	133	18,1	495	67,3	108	14,7
BRASOV	1741	100,0	277	15,9	1304	74,9	160	9,2
BRAILA	701	100,0	150	21,4	443	63,2	108	15,4
BUZAU	1135	100,0	193	17,0	756	66,6	186	16,4
CARAS-SEVERIN	605	100,0	124	20,5	308	50,9	173	28,6
CALARASI	499	100,0	118	23,6	326	65,3	55	11,0
CLUJ	2817	100,0	447	15,9	2137	75,9	233	8,3
CONSTANTA	3177	100,0	451	14,2	2567	80,8	159	5,0
COVASNA	448	100,0	94	21,0	253	56,5	101	22,5
DAMBOVITA	815	100,0	191	23,4	555	68,1	69	8,5
DOLJ	2510	100,0	389	15,5	1895	75,5	226	9,0
GALATI	1505	100,0	302	20,1	1060	70,4	143	9,5
GIURGIU	466	100,0	99	21,2	349	74,9	18	3,9
GORJ	668	100,0	121	18,1	504	75,4	43	6,4
HARGHITA	808	100,0	158	19,6	563	69,7	87	10,8
HUNEDOARA	1201	100,0	233	19,4	866	72,1	102	8,5
IALOMITA	472	100,0	86	18,2	335	71,0	51	10,8
IASI	2394	100,0	471	19,7	1702	71,1	221	9,2
MARAMURES	1383	100,0	235	17,0	1076	77,8	72	5,2
MEHEDINTI	636	100,0	133	20,9	409	64,3	94	14,8
MURES	1441	100,0	244	16,9	1058	73,4	139	9,6
NEAMT	1043	100,0	211	20,2	674	64,6	158	15,1
OLT	724	100,0	140	19,3	425	58,7	159	22,0
PRAHOVA	1989	100,0	372	18,7	1373	69,0	244	12,3
SALAJ	972	100,0	100	10,3	785	80,8	87	9,0
SATU MARE	1175	100,0	171	14,6	807	68,7	197	16,8
SIBIU	1389	100,0	209	15,0	1008	72,6	172	12,4
SUCEAVA	1601	100,0	253	15,8	1139	71,1	209	13,1
TELEORMAN	682	100,0	131	19,2	505	74,0	46	6,7
TIMIS	2449	100,0	429	17,5	1878	76,7	142	5,8
TULCEA	762	100,0	102	13,4	622	81,6	38	5,0
VASLUI	587	100,0	120	20,4	432	73,6	35	6,0
VALCEA	1046	100,0	169	16,2	742	70,9	135	12,9
VRANCEA	781	100,0	131	16,8	535	68,5	115	14,7
MUN. BUCURESTI	12677	100,0	1786	14,1	9835	77,6	1056	8,3
ILFOV	1668	100,0	380	22,8	1163	69,7	125	7,5

*) by effect of implementation of Law no. 314/2001, art.1 and art. 6

Table no.7

Number of incorporations in the trade registers by counties and capital sources in the month of February 2011

County	Total		out of which:						Ranking by: *	
			Private capital			State majority capital		Mixed capital (state+private)		
			out of which:			out of which:		Companies		
			PF	Companies	SC	APJ	RA	Companies		Companies
No.	%	No.	No.	No.		No.	No.	No.		
0	1	2	3	4	5		6	7	8	9
Total ROMÂNIA	10877	100,0	4798	6063	3	13				X
ALBA	166	1,5	95	71						25
ARAD	219	2,0	111	108						18
ARGES	327	3,0	143	184						10
BACAU	275	2,5	138	136	1					13
BIHOR	406	3,7	193	213						6
BISTRITA-NASAUD	131	1,2	56	74	1					31
BOTOSANI	133	1,2	75	55		3				29
BRASOV	277	2,5	102	174		1				12
BRAILA	150	1,4	84	66						27
BUZAU	193	1,8	85	107		1				21
CARAS-SEVERIN	124	1,1	59	65						34
CALARASI	118	1,1	70	48						37
CLUJ	447	4,1	170	277						4
CONSTANTA	451	4,1	150	300		1				3
COVASNA	94	0,9	70	24						41
DAMBOVITA	191	1,8	96	95						22
DOLJ	389	3,6	197	192						7
GALATI	302	2,8	162	140						11
GIURGIU	99	0,9	34	65						40
GORJ	121	1,1	65	56						35
HARGHITA	158	1,5	98	60						26
HUNEDOARA	233	2,1	109	124						17
IALOMITA	86	0,8	45	41						42
IASI	471	4,3	253	218						2
MARAMURES	235	2,2	126	109						16
MEHEDINTI	133	1,2	84	49						30
MURES	244	2,2	123	120		1				15
NEAMT	211	1,9	127	84						19
OLT	140	1,3	81	59						28
PRAHOVA	372	3,4	205	167						9
SALAJ	100	0,9	57	43						39
SATU MARE	171	1,6	81	90						23
SIBIU	209	1,9	100	108	1					20
SUCEAVA	253	2,3	134	114		5				14
TELEORMAN	131	1,2	62	68		1				32
TIMIS	429	3,9	187	242						5
TULCEA	102	0,9	60	42						38
VASLUI	120	1,1	74	46						36
VALCEA	169	1,6	104	65						24
VRANCEA	131	1,2	65	66						33
MUN. BUCURESTI	1786	16,4	396	1390						1
ILFOV	380	3,5	72	308						8

*) The total number of incorporations (col 1)

*** Less than 0,01%

Table no.8

Number of incorporations in the trade registers by counties and business categories in the month of February 2011

County	Total		out of which:						APJ	
			PF	companies: 6063				RA		SC
	SNC	SCS		SRL	SA					
	No.	%	No.	No.	No.	No.	No.	No.		
0	1	2	3	4	5	6	7	8	9	10
Total ROMÂNIA	10877	100,0	4798		1	6043	19		3	13
ALBA	166	1,5	95			71				
ARAD	219	2,0	111			108				
ARGES	327	3,0	143			184				
BACAU	275	2,5	138			135	1		1	
BIHOR	406	3,7	193			213				
BISTRITA-NASAUD	131	1,2	56			74			1	
BOTOSANI	133	1,2	75			55				3
BRASOV	277	2,5	102			172	2			1
BRAILA	150	1,4	84			66				
BUZAU	193	1,8	85			107				1
CARAS-SEVERIN	124	1,1	59			65				
CALARASI	118	1,1	70			48				
CLUJ	447	4,1	170			275	2			
CONSTANTA	451	4,1	150			300				1
COVASNA	94	0,9	70			24				
DAMBOVITA	191	1,8	96			93	2			
DOLJ	389	3,6	197			191	1			
GALATI	302	2,8	162			140				
GIURGIU	99	0,9	34			65				
GORJ	121	1,1	65			56				
HARGHITA	158	1,5	98			60				
HUNEDOARA	233	2,1	109			124				
IALOMITA	86	0,8	45			41				
IASI	471	4,3	253			218				
MARAMURES	235	2,2	126			109				
MEHEDINTI	133	1,2	84			48	1			
MURES	244	2,2	123			120				1
NEAMT	211	1,9	127			84				
OLT	140	1,3	81			59				
PRAHOVA	372	3,4	205			166	1			
SALAJ	100	0,9	57			43				
SATU MARE	171	1,6	81			90				
SIBIU	209	1,9	100			108			1	
SUCEAVA	253	2,3	134			114				5
TELEORMAN	131	1,2	62			68				1
TIMIS	429	3,9	187			242				
TULCEA	102	0,9	60			42				
VASLUI	120	1,1	74			46				
VALCEA	169	1,6	104			65				
VRANCEA	131	1,2	65			66				
MUN. BUCURESTI	1786	16,4	396		1	1382	7			
ILFOV	380	3,5	72			306	2			

Table no. 9

**Number of incorporations in the trade registers by domains of activity and business categories in
the month of February 2011**

CAEN segment	Field of activity	Total		out of which:								
				PF	companies: 6063				RA	SC	APJ	
					SNC	SCS	SRL	SA				
					No.	No.	No.	No.				
0	1	2	3	4	5	6	7	8	9	10	11	
	Total ROMÂNIA	10877	100,0	4798		1	6043	19			3	13
1	Agriculture, hunting and related service activities	501	4,6	324			169					8
2	Forestry and logging	72	0,7	14			58					
3	Fishing and aquaculture	52	0,5	35			17					
5	Mining of hard and brown coal											
6	Extraction of crude petroleum and natural gas	1	0,0				1					
7	Mining of metal ores											
8	Other mining and quarrying	7	0,1				7					
9	Mining support service activities	2	0,0				1	1				
10	Manufacture of food products	195	1,8	76			119					
11	Manufacture of beverages	13	0,1	8			5					
12	Manufacture of tobacco products											
13	Manufacture of textiles	13	0,1	3			10					
14	Manufacture of wearing apparel	72	0,7	29			43					
15	Tanning and dressing of leather; manufacture of luggage, handbags, saddlery, harness and footwear; dressing and dyeing of fur	23	0,2	6			17					
16	Manufacture of wood and of products of wood and cork, except furniture; manufacture of articles of straw and plaiting materials	99	0,9	44			55					
17	Manufacture of paper and paper products	8	0,1	2			6					
18	Printing and reproduction of recorded media	19	0,2	8			11					
19	Manufacture of coke and refined petroleum products											
20	Manufacture of chemicals and chemical products	7	0,1	2			4	1				
21	Manufacture of basic pharmaceutical products and pharmaceutical preparations											
22	Manufacture of rubber and plastic products	31	0,3	4			26	1				
23	Manufacture of other non-metallic mineral products	39	0,4	18			21					
24	Manufacture of basic metals	2	0,0				2					
25	Manufacture of fabricated metal products, except machinery and equipment	112	1,0	81			31					
26	Manufacture of computer, electronic and optical products	10	0,1				10					
27	Manufacture of electrical equipment	8	0,1				7	1				
28	Manufacture of machinery and equipment n.e.c.	9	0,1	2			7					
29	Manufacture of motor vehicles, trailers and semi-trailers	3	0,0				3					
30	Manufacture of other transport equipment	14	0,1				14					
31	Manufacture of furniture	51	0,5	20			31					
32	Other manufacturing	58	0,5	30			28					
33	Repair and installation of machinery and equipment	36	0,3	12			24					
35	Electricity, gas, steam and air conditioning supply	46	0,4				46					
36	Water collection, treatment and supply	2	0,0				2					
37	Sewerage	6	0,1	1			5					
38	Waste collection, treatment and disposal activities; materials recovery	28	0,3	1			27					
39	Remediation activities and other waste management services											
41	Construction of buildings	777	7,1	52			723	2				
42	Civil engineering	53	0,5	2			51					
43	Specialised construction activities	526	4,8	122			403	1				
45	Wholesale and retail trade and repair of motor vehicles and motorcycles	270	2,5	39			231					
46	Wholesale trade, except of motor vehicles and motorcycles	1057	9,7	207			850					5
47	Retail trade, except of motor vehicles and motorcycles	1759	16,2	590			1165	3		1		
49	Land transport and transport via pipelines	551	5,1	198			353					
50	Water transport	5	0,0	1			4					

Table no. 10

Number of incorporated trading companies and the value of the subscribed share capital, by counties, in the month of February 2011

County	Total registered companies		Subscribed capital		Average subscribed capital on company
	No.	%	thousand Lei	%	thousand Lei
0	1	2	3	4	5
Total ROMÂNIA	6063	100,0	175 229,6	100,0	28,9
ALBA	71	1,2	14,5	***	0,2
ARAD	108	1,8	56,1	0,0	0,5
ARGES	184	3,0	117,1	0,1	0,6
BACAU	136	2,2	162,4	0,1	1,2
BIHOR	213	3,5	14670,3	8,4	68,9
BISTRITA-NASAUD	74	1,2	73,5	0,0	1,0
BOTOSANI	55	0,9	11,9	***	0,2
BRASOV	174	2,9	2023,8	1,2	11,6
BRAILA	66	1,1	16,2	***	0,2
BUZAU	107	1,8	1221,5	0,7	11,4
CARAS-SEVERIN	65	1,1	1304,6	0,7	20,1
CALARASI	48	0,8	12,2	***	0,3
CLUJ	277	4,6	308,0	0,2	1,1
CONSTANTA	300	4,9	631,8	0,4	2,1
COVASNA	24	0,4	276,8	0,2	11,5
DAMBOVITA	95	1,6	7122,5	4,1	75,0
DOLJ	192	3,2	123,7	0,1	0,6
GALATI	140	2,3	139,0	0,1	1,0
GIURGIU	65	1,1	3020,0	1,7	46,5
GORJ	56	0,9	26,6	0,0	0,5
HARGHITA	60	1,0	31,9	0,0	0,5
HUNEDOARA	124	2,0	35,5	0,0	0,3
IALOMITA	41	0,7	22,4	0,0	0,5
IASI	218	3,6	112,4	0,1	0,5
MARAMURES	109	1,8	40,7	0,0	0,4
MEHEDINTI	49	0,8	35851,8	20,5	731,7
MURES	120	2,0	46,8	0,0	0,4
NEAMT	84	1,4	43,6	0,0	0,5
OLT	59	1,0	81,4	0,0	1,4
PRAHOVA	167	2,8	35954,6	20,5	215,3
SALAJ	43	0,7	11,8	***	0,3
SATU MARE	90	1,5	33,9	0,0	0,4
SIBIU	108	1,8	28,9	0,0	0,3
SUCEAVA	114	1,9	69,9	0,0	0,6
TELEORMAN	68	1,1	174,6	0,1	2,6
TIMIS	242	4,0	631,4	0,4	2,6
TULCEA	42	0,7	12,2	***	0,3
VASLUI	46	0,8	225,3	0,1	4,9
VALCEA	65	1,1	2312,0	1,3	35,6
VRANCEA	66	1,1	23,9	0,0	0,4
MUN. BUCURESTI	1390	22,9	43547,3	24,9	31,3
ILFOV	308	5,1	24604,5	14,0	79,9

Note: The average does not include filials because according to the Law no.31/1990 they are not juridical persons

*** Less than 0,01%

Table no. 11

Number of incorporated trading companies and the value of the subscribed share capital by legal forms, in the month of February 2011

Company type	Total registered companies		Subscribed capital		Average subscribed capital on company
	No.	%	thousand Lei	%	thousand Lei
0	1	2	3	4	5
Total ROMANIA	6063	100,0	175229,6	100,0	29,0
SNC					
SCS	1	0,0			
SA	19	0,3	91332,1	52,1	6088,8
SRL	6043	99,7	83897,5	47,9	13,9

Note: The average does not include filials because according to the Law no.31/1990 they are not juridical persons

***Less than 0,01%

Diagram no.5

