



MINISTRY OF JUSTICE

THE NATIONAL TRADE REGISTER OFFICE

București, Bd. Unirii nr. 74, Bl. J3b, tronson II+III, sector 3; Telefon: +40 21 316.08.04, 316.08.10; Fax: +40 21 316.08.03; Cod poștal: 030837
Website: www.onrc.ro; E-mail: onrc@onrc.ro; Cod identificare Fiscală: 14942091

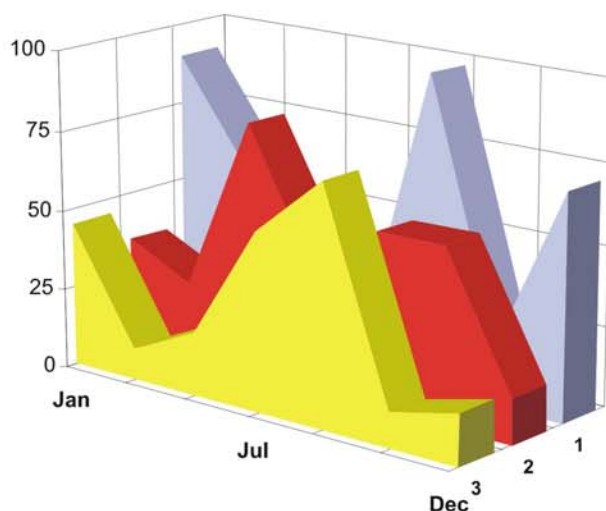
OPERATIONS IN THE CENTRAL TRADE REGISTER

STATISTIC SYNTHESIS

OF

RECORDS IN THE CENTRAL TRADE REGISTER

- 31th January 2011 - provisional data -



- ISSUE No. 230 -

**MINISTRY OF JUSTICE
THE NATIONAL TRADE REGISTER OFFICE**

- Operations such as incorporation of trading companies, submission of changes, and strike-off are carried out based on Law No.26/1990, as republished, Law No.31/1990, as republished and on the Methodological Norms no. P/608/1998.

- This work reflects the evolution of the operations with the Trade Register Office attached to Bucharest Law Court and the Trade Register Offices attached to County Law Courts.

- The data contained in the Central Trade Register refer to operations for which law sets out the obligation of being registered in the trade registers kept by the 42 trade register offices attached to law courts.

• The content of this publication shall not be reproduced, partly or entirely, in original or modified form, and shall not be stored in a recovery system and shall not be transmitted in any form or by any means without prior written authorization of the Ministry of Justice – The National Trade Register Office.

• The content of this publication shall not be used in articles, studies, books, as supporting or explanatory data only by clearly and accurately indicating the source.

CONTENTS

Page

1	Definitions	1
2.1	Data related to the period December 1990 –January 2011	3
	Table no. 1 – Operations performed in the trade registers by categories of registration during December 1990 –January 2011, total by country and by counties, shares of counties in the total by country	3
	Table no. 2 – Operations performed in the trade registers by categories of registration during 1990 –January 2011, total by country and counties, share of categories of operations in the total of each county	4
	Table no. 3 – Number and structure of incorporations in the trade registers during 1990-January 2011	5
	Chart no. 1 – Structure by years of incorporations in the trade register	
	Table no. 4 – Number of incorporations in the trade registers by counties and capital sources during 1990 - January 2011	6
	Table no. 5 – Number of incorporations in the trade registers by counties and business categories during 1990 –January 2011	7
2.2	Data related to January 2011	8
	Table no. 6 – Operations performed in the trade registers by counties and categories of registrations in the month of January 2011	8
	Table no. 7 – Number of incorporations in the trade registers by counties and capital sources in the month of January 2011	9
	Table no. 8 – Number of incorporations in the trade registers by counties and business categories in the month of January 2011	10
	Table no. 9 –Number of incorporations in the trade registers by domains of activity and business categories in the month of January 2011	11-12
	Table no. 10 – Number of incorporated trading companies and the value of subscribed share capital, by counties, in the month of January 2011	13
	Table no. 11– Number of incorporated trading companies and the value of subscribed share capital by legal forms, in the month of January 2011	14
	Chart no. 5 – Average value of subscribed share capital by types of trading companies in the month of January 2011	14

Definitions

The Trade Register Office was established based on Law No. 26/1990, as republished and subsequently amended and supplemented, operates as an active institution since 1990 and is twofold structured:

- at national level, represented by the National Trade Register Office organized under the authority of the Ministry of Justice
- at local level, represented by the 42 Trade Register Offices attached to Law Courts, organized under the subordination of the National Trade Register Office

Categories of persons liable to registration in the trade register:

- natural persons: authorized natural persons, individual enterprises and family enterprises currently carrying on trading activities;
- legal persons represented by: Trading Companies, National Societies and Companies, National R&D Institutes, Autonomous Administrations, Co-operative Societies, Agricultural Co-operatives, Co-operative Organizations, Economic Interest Groupings, European Economic Interest Groupings, European Societies, European Co-operative Societies, branches of trading companies with legal establishment, operation and incorporation regime of trading company legal form under which they were incorporated.

• Terms used in tables and charts

➤ **Number of companies**, depending on the table, represents the number of trading companies incorporated during the reference period, the number of trading companies struck-off from the trade register. The following forms of organization are included: limited liability companies, joint-stock companies, limited partnerships by share, limited partnerships, general partnerships, and branches thereof.

➤ **Value of subscribed share capital:**

- **total, expressed in national currency:** the share capital value resulted by adding up the subscribed values (in cash and in kind) in national currency (lei)

➤ **Regions of economic development:**

<i>North-East:</i>	Suceava, Botoșani, Neamț, Iași, Bacău, Vaslui.
<i>South-East:</i>	Vrancea, Galați, Buzău, Brăila, Tulcea, Constanța.
<i>South-Muntenia:</i>	Argeș, Dâmbovița, Prahova, Teleorman, Giurgiu, Călărași, Ialomița.
<i>South-West Oltenia:</i>	Gorj, Vâlcea, Dolj, Mehedinți, Olt.
<i>West:</i>	Arad, Caraș-Severin, Hunedoara, Timiș.
<i>North-West:</i>	Bihor, Bistrița, Cluj, Satu Mare, Sălaj, Maramureș.
<i>Center:</i>	Alba, Brașov, Covasna, Harghita, Mureș, Sibiu.
<i>Bucharest-Ilfov:</i>	București, Ilfov.

NACE Code – The classification of economic activities in the national economy was approved by GO No. 656/1997, amended by Order No 601/2002 and Order no. 337/2007 of the President of the National Institute of Statistics, and complies with the international classification used in statistic reports and official documents. The activities are ranked by the harmonization principle, by sections, divisions, groups and classes.

Abbreviations

- **PF** - Natural Person; the following forms of organization are included in this category: natural persons and family associations registered until 25.04.2008, authorized natural persons, individual enterprises and family enterprises.
- **SNC** - General Partnership
- **SCS** - Limited Partnership
- **SCA** - Limited Partnership by Share
- **SA** - Joint-Stock Company
- **SRL** - Limited Liability Company
- **RA** - Autonomous Administration
- **APJ** - Other legal persons having the obligation to register in the trade register: National R&D Institutes, Economic Interest Groupings, European Economic Interest Groupings, European Societies, European Co-operative Societies, Agricultural Co-operatives, Co-operative Organizations.

Sources of Information:

The integrated IT system of the trade register is designed by The National Trade Register Office in compliance with the provisions of the related legislation in force. The source of information consists of the trade registers organized in computerized system, kept by the trade register offices attached to law courts.

Table no. 1

**Operations performed in the trade registers by categories of registration during
December 1990 – January 2011, total by country and by counties, share of
counties in the total by country**

Counties	Total of registered operations		out of which :					
			Registered companies		Changes in statutory documents		Strike off companies	
	No.	%	No.	%	No.	%	No.	%
0	1	2	3	4	7	8	9	10
Total ROMÂNIA	14626574	100,0	2093755	100,0	11717907	100,0	814912	100,0
ALBA	221602	1,5	35187	1,7	174697	1,5	11718	1,4
ARAD	345688	2,4	50975	2,4	274208	2,3	20505	2,5
ARGES	353738	2,4	53621	2,6	283836	2,4	16281	2,0
BACAU	340197	2,3	52190	2,5	265356	2,3	22651	2,8
BIHOR	443452	3,0	65080	3,1	356287	3,0	22085	2,7
BISTRITA-NASAUD	177476	1,2	27140	1,3	139955	1,2	10381	1,3
BOTOSANI	137185	0,9	25697	1,2	100535	0,9	10953	1,3
BRASOV	568488	3,9	64570	3,1	481791	4,1	22127	2,7
BRAILA	224910	1,5	29326	1,4	186952	1,6	8632	1,1
BUZAU	252944	1,7	37677	1,8	199023	1,7	16244	2,0
CARAS-SEVERIN	170100	1,2	25331	1,2	132761	1,1	12008	1,5
CALARASI	133710	0,9	21115	1,0	103620	0,9	8975	1,1
CLUJ	647860	4,4	96049	4,6	520860	4,4	30951	3,8
CONSTANTA	624633	4,3	86053	4,1	502394	4,3	36186	4,4
COVASNA	126163	0,9	17918	0,9	101104	0,9	7141	0,9
DAMBOVITA	210674	1,4	39253	1,9	152525	1,3	18896	2,3
DOLJ	393313	2,7	55333	2,6	316359	2,7	21621	2,7
GALATI	371116	2,5	49756	2,4	300810	2,6	20550	2,5
GIURGIU	115823	0,8	17614	0,8	90815	0,8	7394	0,9
GORJ	223122	1,5	24774	1,2	188525	1,6	9823	1,2
HARGHITA	219797	1,5	32767	1,6	176179	1,5	10851	1,3
HUNEDOARA	293270	2,0	42722	2,0	232613	2,0	17935	2,2
IALOMITA	134956	0,9	19439	0,9	105785	0,9	9732	1,2
IASI	483820	3,3	69673	3,3	390265	3,3	23882	2,9
MARAMURES	311122	2,1	52758	2,5	235086	2,0	23278	2,9
MEHEDINTI	149030	1,0	23475	1,1	115015	1,0	10540	1,3
MURES	404074	2,8	52070	2,5	330846	2,8	21158	2,6
NEAMT	310698	2,1	44341	2,1	246070	2,1	20287	2,5
OLT	174871	1,2	28978	1,4	133268	1,1	12625	1,5
PRAHOVA	494282	3,4	69772	3,3	397081	3,4	27429	3,4
SALAJ	130711	0,9	21133	1,0	101041	0,9	8537	1,0
SATU MARE	228473	1,6	35664	1,7	177748	1,5	15061	1,8
SIBIU	318766	2,2	41214	2,0	262445	2,2	15107	1,9
SUCEAVA	345613	2,4	51703	2,5	268762	2,3	25148	3,1
TELEORMAN	156514	1,1	24276	1,2	123073	1,1	9165	1,1
TIMIS	489143	3,3	74017	3,5	389982	3,3	25144	3,1
TULCEA	172617	1,2	21273	1,0	141963	1,2	9381	1,2
VASLUI	182197	1,2	25906	1,2	143642	1,2	12649	1,6
VALCEA	224311	1,5	33667	1,6	175083	1,5	15561	1,9
VRANCEA	179148	1,2	25895	1,2	145233	1,2	8020	1,0
MUN. BUCURESTI	2901522	19,8	387099	18,5	2366682	20,2	147741	18,1
ILFOV	239445	1,6	41254	2,0	187632	1,6	10559	1,3

*** Less 0,01%

Table no. 2

Operations performed in the trade registers during December 1990 – January 2011, total by country and counties, share of categories of operations in the total of each county

Counties	Total of registered operations		out of which :					
			Registered companies		Changes in statutory documents		Strike off companies	
	No.	%	No.	%	No.	%	No.	%
0	1	2	3	4	7	8	11	12
Total ROMÂNIA	14626574	100,0	2093755	14,3	11717907	80,1	814912	5,6
ALBA	221602	100,0	35187	15,9	174697	78,8	11718	5,3
ARAD	345688	100,0	50975	14,7	274208	79,3	20505	5,9
ARGES	353738	100,0	53621	15,2	283836	80,2	16281	4,6
BACAU	340197	100,0	52190	15,3	265356	78,0	22651	6,7
BIHOR	443452	100,0	65080	14,7	356287	80,3	22085	5,0
BISTRITA-NASAUD	177476	100,0	27140	15,3	139955	78,9	10381	5,8
BOTOSANI	137185	100,0	25697	18,7	100535	73,3	10953	8,0
BRASOV	568488	100,0	64570	11,4	481791	84,7	22127	3,9
BRAILA	224910	100,0	29326	13,0	186952	83,1	8632	3,8
BUZAU	252944	100,0	37677	14,9	199023	78,7	16244	6,4
CARAS-SEVERIN	170100	100,0	25331	14,9	132761	78,0	12008	7,1
CALARASI	133710	100,0	21115	15,8	103620	77,5	8975	6,7
CLUJ	647860	100,0	96049	14,8	520860	80,4	30951	4,8
CONSTANTA	624633	100,0	86053	13,8	502394	80,4	36186	5,8
COVASNA	126163	100,0	17918	14,2	101104	80,1	7141	5,7
DAMBOVITA	210674	100,0	39253	18,6	152525	72,4	18896	9,0
DOLJ	393313	100,0	55333	14,1	316359	80,4	21621	5,5
GALATI	371116	100,0	49756	13,4	300810	81,1	20550	5,5
GIURGIU	115823	100,0	17614	15,2	90815	78,4	7394	6,4
GORJ	223122	100,0	24774	11,1	188525	84,5	9823	4,4
HARGHITA	219797	100,0	32767	14,9	176179	80,2	10851	4,9
HUNEDOARA	293270	100,0	42722	14,6	232613	79,3	17935	6,1
IALOMITA	134956	100,0	19439	14,4	105785	78,4	9732	7,2
IASI	483820	100,0	69673	14,4	390265	80,7	23882	4,9
MARAMURES	311122	100,0	52758	17,0	235086	75,6	23278	7,5
MEHEDINTI	149030	100,0	23475	15,8	115015	77,2	10540	7,1
MURES	404074	100,0	52070	12,9	330846	81,9	21158	5,2
NEAMT	310698	100,0	44341	14,3	246070	79,2	20287	6,5
OLT	174871	100,0	28978	16,6	133268	76,2	12625	7,2
PRAHOVA	494282	100,0	69772	14,1	397081	80,3	27429	5,5
SALAJ	130711	100,0	21133	16,2	101041	77,3	8537	6,5
SATU MARE	228473	100,0	35664	15,6	177748	77,8	15061	6,6
SIBIU	318766	100,0	41214	12,9	262445	82,3	15107	4,7
SUCEAVA	345613	100,0	51703	15,0	268762	77,8	25148	7,3
TELEORMAN	156514	100,0	24276	15,5	123073	78,6	9165	5,9
TIMIS	489143	100,0	74017	15,1	389982	79,7	25144	5,1
TULCEA	172617	100,0	21273	12,3	141963	82,2	9381	5,4
VASLUI	182197	100,0	25906	14,2	143642	78,8	12649	6,9
VALCEA	224311	100,0	33667	15,0	175083	78,1	15561	6,9
VRANCEA	179148	100,0	25895	14,5	145233	81,1	8020	4,5
MUN. BUCURESTI	2901522	100,0	387099	13,3	2366682	81,6	147741	5,1
ILFOV	239445	100,0	41254	17,2	187632	78,4	10559	4,4

Table no.3

**Number and structure of incorporations in the trade registers during December 1990
- January 2011**

Period (year, month)	Registered companies		Percentage	
	No.	%	%	
0	1	2	3	
Total, 31 January 2011, out of which	2093755	100,00		
Year 1990	81	0,00		
Year 1991	95840	4,58		
Year 1992	137456	6,57		
Year 1993	117078	5,59		
Year 1994	137445	6,56		
Year 1995	65479	3,13		
Year 1996	62089	2,97		
Year 1997	55663	2,66		
Year 1998	63873	3,05		
Year 1999	57197	2,73		
Year 2000	57268	2,74		
Year 2001	61265	2,93		
Year 2002	84780	4,05		
Year 2003	123582	5,90		
Year 2004	144284	6,89		
Year 2005	159464	7,62		
Year 2006	135371	6,47		
Year 2007	144728	6,91		
Year 2008	144173	6,89		
Year 2009	116031	5,54		
Year 2010	122831	5,87		
Year 2011 (I - XII) out of which :	7783	0,37		
January	7783		100,0	

Note: Column 2 reveals the annual structure of incorporations; column 3 reveals the structure by months during the current year.

Diagram no.1

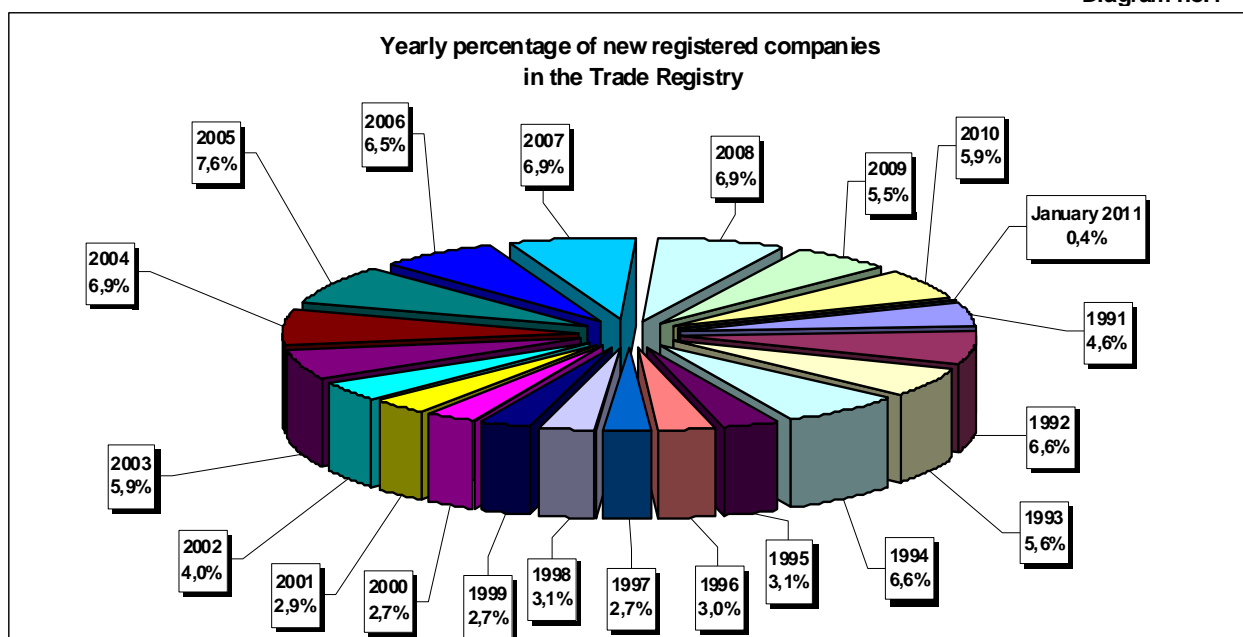


Table no. 4

**Number of incorporations in the trade registers by counties and capital sources during
December 1990 - January 2011**

Counties	Total		out of which:						Ranking by: *	
			Private capital				State majority capital			Mixed capital (state+private)
			out of which:				out of which:			
			FF	Companies	SC	APJ	RA	Companies		Companies
No.	%	No.	No.	No.	No.	No.	No.	No.		
0	1	2	3	4	5	6	6	7	8	9
Total ROMÂNIA	2093755	100,0	616123	1457405	2038	5712	1394	2416	8674	X
ALBA	35187	1,7	14381	20367	36	148	38	47	170	24
ARAD	50975	2,4	20394	29943	60	170	30	43	336	15
ARGES	53621	2,6	18486	34696	48	175	31	32	153	10
BACAU	52190	2,5	19069	32504	151	161	35	45	226	12
BIHOR	65080	3,1	19108	45346	63	152	40	62	309	7
BISTRITA-NASAUD	27140	1,3	11273	15555	46	99	29	29	109	29
BOTOSANI	25697	1,2	12634	12528	40	179	21	176	119	32
BRASOV	64604	3,1	16108	48005	58	125	49	87	172	8
BRAILA	29292	1,4	9129	19778	42	100	30	46	167	27
BUZAU	37677	1,8	12192	25085	46	153	28	42	131	22
CARAS-SEVERIN	25331	1,2	9344	15595	42	108	39	65	138	33
CALARASI	21115	1,0	7067	13740	22	91	18	77	100	39
CLUJ	96049	4,6	27378	68093	62	158	52	42	264	2
CONSTANTA	86053	4,1	18853	66258	87	210	51	51	543	3
COVASNA	17918	0,9	7152	10490	41	70	24	32	109	41
DAMBOVITA	39253	1,9	18744	20076	32	140	30	75	156	21
DOLJ	55333	2,6	13921	40902	39	169	40	58	204	9
GALATI	49756	2,4	12775	36582	35	140	30	51	143	16
GIURGIU	17615	0,8	4559	12713	15	84	23	110	111	42
GORJ	24773	1,2	7157	17172	26	184	51	83	100	34
HARGHITA	32767	1,6	14929	17383	64	92	24	43	232	26
HUNEDOARA	42722	2,0	12928	29253	33	84	42	95	287	18
IALOMITA	19439	0,9	7756	11421	27	83	15	46	91	40
IASI	69673	3,3	23522	45442	87	169	34	77	344	6
MARAMURES	52758	2,5	22433	29952	43	128	38	41	124	11
MEHEDINTI	23475	1,1	8832	14390	19	89	19	27	99	36
MURES	52070	2,5	20839	30771	68	159	30	34	169	13
NEAMT	44341	2,1	17266	26617	66	166	30	30	166	17
OLT	28978	1,4	11713	16859	27	166	26	64	123	28
PRAHOVA	69772	3,3	23690	45433	67	184	52	74	272	5
SALAJ	21133	1,0	9090	11781	41	110	19	28	64	38
SATU MARE	35664	1,7	13085	22244	41	98	21	42	134	23
SIBIU	41214	2,0	12383	28368	37	121	34	110	161	20
SUCEAVA	51703	2,5	25242	25859	73	210	31	67	221	14
TELEORMAN	24276	1,2	9221	14608	33	163	21	46	184	35
TIMIS	74017	3,5	14591	58744	69	155	38	69	351	4
TULCEA	21273	1,0	8158	12739	36	67	19	42	212	37
VASLUI	25906	1,2	12983	12595	22	113	16	41	136	30
VALCEA	33667	1,6	14282	18953	64	171	42	40	115	25
VRANCEA	25895	1,2	9006	16580	35	115	17	28	114	31
MUN. BUCURESTI	387099	18,5	38450	347067	64	155	116	106	1142	1
ILFOV	41254	2,0	6000	34918	31	98	21	13	173	19

*) The total number of incorporations (col 1)

Table no. 5

**Number of incorporations in the trade registers by counties and business categories
during December 1990 – January 2011**

County	Total		out of which:							
			PF	companies: 1468495				RA	SC	APJ
				SNC	SCS	SRL	SA			
				No.	No.	No.	No.			
0	1	2	3	4	5	6	7	8	9	10
Total ROMÂNIA	2093755	100,0	616123	32680	1619	1400177	34012	1394	2038	5712
ALBA	35187	1,7	14381	890	11	19108	575	38	36	148
ARAD	50975	2,4	20394	54	13	29545	709	30	60	170
ARGES	53621	2,6	18486	107	15	33914	845	31	48	175
BACAU	52190	2,5	19069	1299	4	30717	754	35	151	161
BIHOR	65080	3,1	19108	127	48	44607	935	40	63	152
BISTRITA-NASAUD	27140	1,3	11273	146	22	15102	423	29	46	99
BOTOSANI	25697	1,2	12634	468	1	11891	463	21	40	179
BRASOV	64570	3,1	16108	239	21	47074	896	49	58	125
BRAILA	29326	1,4	9129	376	12	19096	541	30	42	100
BUZAU	37677	1,8	12192	3747	46	20870	595	28	46	153
CARAS-SEVERIN	25331	1,2	9344	118	9	15196	475	39	42	108
CALARASI	21115	1,0	7067	609	3	12940	365	18	22	91
CLUJ	96049	4,6	27378	2112	21	64903	1363	52	62	158
CONSTANTA	86053	4,1	18853	311	23	64985	1533	51	87	210
COVASNA	17918	0,9	7152	148	4	10167	312	24	41	70
DAMBOVITA	39253	1,9	18744	60	8	19733	506	30	32	140
DOLJ	55333	2,6	13921	1560	8	38674	922	40	39	169
GALATI	49756	2,4	12775	1574	6	34327	869	30	35	140
GIURGIU	17614	0,8	4559	35	8	12555	335	23	15	84
GORJ	24774	1,2	7157	29	1	16818	508	51	26	184
HARGHITA	32767	1,6	14929	62	7	17085	504	24	64	92
HUNEDOARA	42722	2,0	12928	1166	98	27674	697	42	33	84
IALOMITA	19439	0,9	7756	269	12	10922	355	15	27	83
IASI	69673	3,3	23522	508	111	44196	1046	34	87	169
MARAMURES	52758	2,5	22433	1927	23	27554	612	38	43	128
MEHEDINTI	23475	1,1	8832	427	3	13742	344	19	19	89
MURES	52070	2,5	20839	37	34	30213	690	30	68	159
NEAMT	44341	2,1	17266	3293	30	22803	687	30	66	166
OLT	28978	1,4	11713	1611	1	14929	505	26	27	166
PRAHOVA	69772	3,3	23690	3122	15	41699	943	52	67	184
SALAJ	21133	1,0	9090	600	4	10968	301	19	41	110
SATU MARE	35664	1,7	13085	283	9	21645	482	21	41	98
SIBIU	41214	2,0	12383	778	49	27127	685	34	37	121
SUCEAVA	51703	2,5	25242	438	8	25096	605	31	73	210
TELEORMAN	24276	1,2	9221	272	399	13730	437	21	33	163
TIMIS	74017	3,5	14591	616	34	57219	1295	38	69	155
TULCEA	21273	1,0	8158	1363	114	11030	486	19	36	67
VASLUI	25906	1,2	12983	90	13	12242	427	16	22	113
VALCEA	33667	1,6	14282	364	6	18229	509	42	64	171
VRANCEA	25895	1,2	9006	356	10	15888	468	17	35	115
MUN. BUCURESTI	387099	18,5	38450	1039	321	339638	7316	116	64	155
ILFOV	41254	2,0	6000	50	34	34326	694	21	31	98

Table no. 6

Operations performed in the trade registers by counties and categories of registration in the month of January 2011

County	Total of operations carried on		out of which:					
			New incorporations		Changes in statutory documents		Strike off companies	
	No.	%	No.	%	No.	%	No.	%
0	1	2	3	4	5	6	9	10
Total ROMÂNIA	60045	100,0	7783	13,0	46320	77,1	5942	9,9
ALBA	973	100,0	132	13,6	762	78,3	79	8,1
ARAD	1444	100,0	217	15,0	1085	75,1	142	9,8
ARGES	1653	100,0	250	15,1	1280	77,4	123	7,4
BACAU	1487	100,0	233	15,7	1020	68,6	234	15,7
BIHOR	1856	100,0	270	14,5	1383	74,5	203	10,9
BISTRITA-NASAUD	683	100,0	103	15,1	526	77,0	54	7,9
BOTOSANI	525	100,0	91	17,3	360	68,6	74	14,1
BRASOV	1948	100,0	133	6,8	1606	82,4	209	10,7
BRAILA	759	100,0	177	23,3	463	61,0	119	15,7
BUZAU	1147	100,0	151	13,2	878	76,5	118	10,3
CARAS-SEVERIN	504	100,0	82	16,3	273	54,2	149	29,6
CALARASI	455	100,0	73	16,0	330	72,5	52	11,4
CLUJ	2896	100,0	263	9,1	2464	85,1	169	5,8
CONSTANTA	2823	100,0	290	10,3	2349	83,2	184	6,5
COVASNA	647	100,0	74	11,4	423	65,4	150	23,2
DAMBOVITA	722	100,0	163	22,6	478	66,2	81	11,2
DOLJ	1509	100,0	289	19,2	1114	73,8	106	7,0
GALATI	1678	100,0	201	12,0	1300	77,5	177	10,5
GIURGIU	617	100,0	69	11,2	526	85,3	22	3,6
GORJ	604	100,0	95	15,7	471	78,0	38	6,3
HARGHITA	962	100,0	86	8,9	759	78,9	117	12,2
HUNEDOARA	1078	100,0	171	15,9	815	75,6	92	8,5
IALOMITA	394	100,0	84	21,3	263	66,8	47	11,9
IASI	2247	100,0	336	15,0	1631	72,6	280	12,5
MARAMURES	1081	100,0	172	15,9	852	78,8	57	5,3
MEHEDINTI	840	100,0	90	10,7	711	84,6	39	4,6
MURES	1338	100,0	171	12,8	1007	75,3	160	12,0
NEAMT	1089	100,0	119	10,9	806	74,0	164	15,1
OLT	549	100,0	94	17,1	361	65,8	94	17,1
PRAHOVA	1936	100,0	275	14,2	1474	76,1	187	9,7
SALAJ	826	100,0	80	9,7	662	80,1	84	10,2
SATU MARE	1279	100,0	141	11,0	1000	78,2	138	10,8
SIBIU	1322	100,0	168	12,7	1041	78,7	113	8,5
SUCEAVA	1239	100,0	205	16,5	855	69,0	179	14,4
TELEORMAN	595	100,0	106	17,8	440	73,9	49	8,2
TIMIS	2303	100,0	274	11,9	1820	79,0	209	9,1
TULCEA	545	100,0	62	11,4	429	78,7	54	9,9
VASLUI	574	100,0	79	13,8	443	77,2	52	9,1
VALCEA	965	100,0	114	11,8	744	77,1	107	11,1
VRANCEA	686	100,0	88	12,8	520	75,8	78	11,4
MUN. BUCURESTI	11617	100,0	1250	10,8	9312	80,2	1055	9,1
ILFOV	1650	100,0	262	15,9	1284	77,8	104	6,3

*) by effect of implementation of Law no. 314/2001, art.1 and art. 6

Table no.7

Number of incorporations in the trade registers by counties and capital sources in the month of January 2011

County	Total		out of which:						Ranking by: *	
			Private capital			State majority capital		Mixed capital (state+private)		
			out of which:			out of which:				
			PF	Companies	SC	APJ	RA	Companies		Companies
			No.	%	No.	No.	No.	No.		No.
0	1	2	3	4	5	6	7	8	9	
Total ROMÂNIA	7783	100,0	3670	4111		1	1	1		X
ALBA	132	1,7	80	52						24
ARAD	217	2,8	128	89						12
ARGES	250	3,2	127	123						10
BACAU	233	3,0	134	99						11
BIHOR	270	3,5	147	123						7
BISTRITA-NASAUD	103	1,3	55	47			1	1		28
BOTOSANI	91	1,2	67	24						31
BRASOV	175	2,2	75	100						15
BRAILA	135	1,7	77	58						23
BUZAU	151	1,9	81	70						21
CARAS-SEVERIN	82	1,1	38	44						36
CALARASI	73	0,9	43	30						40
CLUJ	263	3,4	111	152						8
CONSTANTA	290	3,7	104	186						3
COVASNA	74	1,0	55	19						39
DAMBOVITA	163	2,1	95	68						20
DOLJ	289	3,7	161	128						4
GALATI	201	2,6	90	111						14
GIURGIU	69	0,9	22	47						41
GORJ	95	1,2	41	54						29
HARGHITA	86	1,1	51	35						34
HUNEDOARA	171	2,2	78	93						17
IALOMITA	84	1,1	51	33						35
IASI	336	4,3	185	151						2
MARAMURES	172	2,2	107	65						16
MEHEDINTI	90	1,2	59	31						32
MURES	171	2,2	95	76						18
NEAMT	119	1,5	67	52						25
OLT	94	1,2	37	57						30
PRAHOVA	275	3,5	160	115						5
SALAJ	80	1,0	42	38						37
SATU MARE	141	1,8	87	54						22
SIBIU	168	2,2	97	71						19
SUCEAVA	205	2,6	113	92						13
TELEORMAN	106	1,4	55	51						27
TIMIS	274	3,5	96	178						6
TULCEA	62	0,8	29	33						42
VASLUI	79	1,0	53	26						38
VALCEA	114	1,5	65	49						26
VRANCEA	88	1,1	31	57						33
MUN. BUCURESTI	1250	16,1	332	917		1				1
ILFOV	262	3,4	49	213						9

*) The total number of incorporations (col 1)

*** Less than 0,01%

Table no.8

Number of incorporations in the trade registers by counties and business categories in the month of January 2011

County	Total		out of which:						APJ	
			PF	companies: 4111				RA		SC
	SNC	SCS		SRL	SA					
	No.	%	No.	No.	No.	No.	No.	No.		
0	1	2	3	4	5	6	7	8	9	
Total ROMÂNIA	7783	100,0	3670			4093	18	1		1
ALBA	132	1,7	80			52				
ARAD	217	2,8	128			89				
ARGES	250	3,2	127			123				
BACAU	233	3,0	134			99				
BIHOR	270	3,5	147			122	1			
BISTRITA-NASAUD	103	1,3	55			47		1		
BOTOSANI	91	1,2	67			22	2			
BRASOV	133	1,7	75			58				
BRAILA	177	2,3	77			100				
BUZAU	151	1,9	81			70				
CARAS-SEVERIN	82	1,1	38			44				
CALARASI	73	0,9	43			30				
CLUJ	263	3,4	111			151	1			
CONSTANTA	290	3,7	104			182	4			
COVASNA	74	1,0	55			19				
DAMBOVITA	163	2,1	95			68				
DOLJ	289	3,7	161			126	2			
GALATI	201	2,6	90			110	1			
GIURGIU	69	0,9	22			47				
GORJ	95	1,2	41			54				
HARGHITA	86	1,1	51			35				
HUNEDOARA	171	2,2	78			93				
IALOMITA	84	1,1	51			33				
IASI	336	4,3	185			151				
MARAMURES	172	2,2	107			64	1			
MEHEDINTI	90	1,2	59			31				
MURES	171	2,2	95			75	1			
NEAMT	119	1,5	67			52				
OLT	94	1,2	37			57				
PRAHOVA	275	3,5	160			115				
SALAJ	80	1,0	42			38				
SATU MARE	141	1,8	87			54				
SIBIU	168	2,2	97			71				
SUCEAVA	205	2,6	113			91	1			
TELEORMAN	106	1,4	55			51				
TIMIS	274	3,5	96			178				
TULCEA	62	0,8	29			33				
VASLUI	79	1,0	53			25	1			
VALCEA	114	1,5	65			49				
VRANCEA	88	1,1	31			57				
MUN. BUCURESTI	1250	16,1	332			914	3			1
ILFOV	262	3,4	49			213				

Table no. 9

Number of incorporations in the trade registers by domains of activity and business categories in the month of January 2011

CAEN segment	Field of activity	Total		out of which:							
				PF	companies: 4111				RA	SC	APJ
		SNC	SCS		SRL	SA					
		No.	%	No.	No.	No.	No.	No.	No.	No.	
0	1	2	3	4	5	6	7	8	9	10	11
	Total ROMANIA	7783	100,0	3670			4093	18	1		1
1	Agriculture, hunting and related service activities	468	6,0	386			82				
2	Forestry and logging	47	0,6	12			34		1		
3	Fishing and aquaculture	42	0,5	36			6				
5	Mining of hard and brown coal										
6	Extraction of crude petroleum and natural gas										
7	Mining of metal ores	2	0,0	1			1				
8	Other mining and quarrying	11	0,1	1			10				
9	Mining support service activities	1	0,0				1				
10	Manufacture of food products	118	1,5	40			78				
11	Manufacture of beverages	15	0,2	10			5				
12	Manufacture of tobacco products										
13	Manufacture of textiles	9	0,1	1			8				
14	Manufacture of wearing apparel	90	1,2	58			32				
15	Tanning and dressing of leather; manufacture of luggage, handbags, saddlery, harness and footwear; dressing and dyeing of fur	13	0,2				13				
16	Manufacture of wood and of products of wood and cork, except furniture; manufacture of articles of straw and plaiting materials	59	0,8	28			31				
17	Manufacture of paper and paper products	3	0,0				3				
18	Printing and reproduction of recorded media	21	0,3	6			15				
19	Manufacture of coke and refined petroleum products	1	0,0				1				
20	Manufacture of chemicals and chemical products	3	0,0				3				
21	Manufacture of basic pharmaceutical products and pharmaceutical preparations										
22	Manufacture of rubber and plastic products	17	0,2	7			10				
23	Manufacture of other non-metallic mineral products	27	0,3	12			15				
24	Manufacture of basic metals	3	0,0				3				
25	Manufacture of fabricated metal products, except machinery and equipment	62	0,8	43			19				
26	Manufacture of computer, electronic and optical products	1	0,0				1				
27	Manufacture of electrical equipment	1	0,0				1				
28	Manufacture of machinery and equipment n.e.c.	5	0,1				5				
29	Manufacture of motor vehicles, trailers and semi-trailers	2	0,0				1	1			
30	Manufacture of other transport equipment	7	0,1	1			6				
31	Manufacture of furniture	26	0,3	17			9				
32	Other manufacturing	41	0,5	32			9				
33	Repair and installation of machinery and equipment	29	0,4	14			15				
35	Electricity, gas, steam and air conditioning supply	34	0,4				34				
36	Water collection, treatment and supply	6	0,1				3	3			
37	Sewerage	6	0,1	1			5				
38	Waste collection, treatment and disposal activities; materials recovery	28	0,4	1			27				
39	Remediation activities and other waste management services										
41	Construction of buildings	777	10,0	52			723	2			
42	Civil engineering	53	0,7	2			51				1
43	Specialised construction activities	526	6,8	122			403	1			
45	Wholesale and retail trade and repair of motor vehicles and motorcycles	270	3,5	39			231				
46	Wholesale trade, except of motor vehicles and motorcycles	1057	13,6	207			850				
47	Retail trade, except of motor vehicles and motorcycles	1759	22,6	590			1165	3		1	
49	Land transport and transport via pipelines	551	7,1	198			353				
50	Water transport	5	0,1	1			4				

Table no. 10

Number of incorporated trading companies and the value of the subscribed share capital, by counties, in the month of January 2011

County	Total registered companies		Subscribed capital		Average subscribed capital on company
	No.	%	thousand Lei	%	thousand Lei
0	1	2	3	4	5
Total ROMÂNIA	4111	100,0	135265,9	100,0	32,9
ALBA	52	1,3	859,2	0,6	16,5
ARAD	89	2,2	16067,5	11,9	180,5
ARGES	123	3,0	149,1	0,1	1,2
BACAU	99	2,4	25,5	0,0	0,3
BIHOR	123	3,0	216,1	0,2	1,8
BISTRITA-NASAUD	47	1,1	34,2	0,0	0,7
BOTOSANI	24	0,6	5,2	***	0,2
BRASOV	58	1,4	257,7	0,2	4,4
BRAILA	100	2,4	42,8	0,0	0,4
BUZAU	70	1,7	31,8	0,0	0,5
CARAS-SEVERIN	44	1,1	318,9	0,2	7,2
CALARASI	30	0,7	9,6	***	0,3
CLUJ	152	3,7	244,5	0,2	1,6
CONSTANTA	186	4,5	1786,4	1,3	9,6
COVASNA	19	0,5	28,2	0,0	1,5
DAMBOVITA	68	1,7	361,2	0,3	5,3
DOLJ	128	3,1	2656,5	2,0	20,8
GALATI	111	2,7	3063,8	2,3	27,6
GIURGIU	47	1,1	46,9	0,0	1,0
GORJ	54	1,3	83,6	0,1	1,5
HARGHITA	35	0,9	10,7	***	0,3
HUNEDOARA	93	2,3	46,8	0,0	0,5
IALOMITA	33	0,8	39,9	0,0	1,2
IASI	151	3,7	52,9	0,0	0,4
MARAMURES	65	1,6	109,4	0,1	1,7
MEHEDINTI	31	0,8	6,5	***	0,2
MURES	76	1,8	693,8	0,5	9,1
NEAMT	52	1,3	12,8	***	0,2
OLT	57	1,4	18,0	0,0	0,3
PRAHOVA	115	2,8	456,2	0,3	4,0
SALAJ	38	0,9	40,4	0,0	1,1
SATU MARE	54	1,3	139,6	0,1	2,6
SIBIU	71	1,7	28,1	0,0	0,4
SUCEAVA	92	2,2	319,0	0,2	3,5
TELEORMAN	51	1,2	26,0	0,0	0,5
TIMIS	178	4,3	650,3	0,5	3,7
TULCEA	33	0,8	47,3	0,0	1,4
VASLUI	26	0,6	5,4	***	0,2
VALCEA	49	1,2	12,7	***	0,3
VRANCEA	57	1,4	132,2	0,1	2,3
MUN. BUCURESTI	917	22,3	19751,3	14,6	21,5
ILFOV	213	5,2	86378,0	63,9	405,5

Note: The average does not include filials because according to the Law no.31/1990 they are not juridical persons

*** Less than 0,01%

Table no. 11

Number of incorporated trading companies and the value of the subscribed share capital by legal forms, in the month of January 2011

Company type	Total registered companies		Subscribed capital		Average subscribed capital on company
	No.	%	thousand Lei	%	thousand Lei
0	1	2	3	4	5
Total ROMANIA	4111	100,0	135265,9	100,0	33,1
SNC					
SCS					
SA	18	0,4	7286,8	5,4	910,9
SRL	4093	99,6	127979,1	94,6	31,3

Note: The average does not include filials because according to the Law no.31/1990 they are not juridical persons

*** Less than 0,01%

Diagram no.5

