



MINISTRY OF JUSTICE

THE NATIONAL TRADE REGISTER OFFICE

București, Bd. Unirii nr. 74, Bl. J3b, tronson II+III, sector 3; Telefon: +40 21 316.08.04, 316.08.10; Fax: +40 21 316.08.03; Cod poștal: 030837  
Website: [www.onrc.ro](http://www.onrc.ro); E-mail: [onrc@onrc.ro](mailto:onrc@onrc.ro); Cod Identificare Fiscală: 14942091

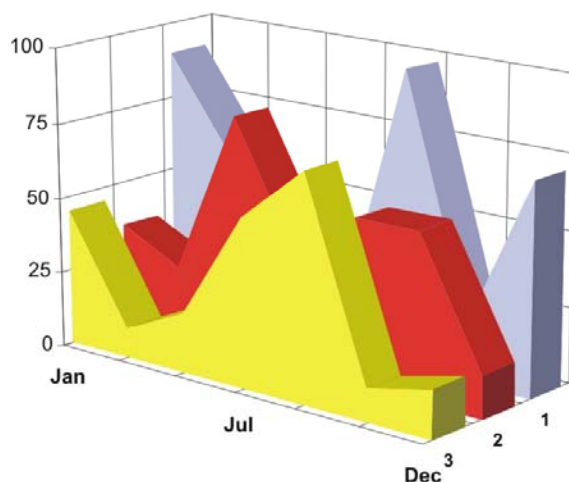
# OPERATIONS IN THE CENTRAL TRADE REGISTER

## STATISTIC SYNTHESIS

OF

**RECORDS IN THE CENTRAL TRADE REGISTER**

**- 31<sup>th</sup> December 2010 - provisional data -**



- ISSUE No. 229 -

## MINISTRY OF JUSTICE THE NATIONAL TRADE REGISTER OFFICE

- Operations such as incorporation of trading companies, submission of changes, and strike-off are carried out based on Law No.26/1990, as republished, Law No.31/1990, as republished and on the Methodological Norms no. P/608/1998.
- This work reflects the evolution of the operations with the Trade Register Office attached to Bucharest Law Court and the Trade Register Offices attached to County Law Courts.
- The data contained in the Central Trade Register refer to operations for which law sets out the obligation of being registered in the trade registers kept by the 42 trade register offices attached to law courts.

*• The content of this publication shall not be reproduced, partly or entirely, in original or modified form, and shall not be stored in a recovery system and shall not be transmitted in any form or by any means without prior written authorization of the Ministry of Justice – The National Trade Register Office.*

*• The content of this publication December be used in articles, studies, books, as supporting or explanatory data only by clearly and accurately indicating the source.*

<b>1 Definitions</b>	<b>1</b>
<b>2.1 Data related to the period December 1990 – December 2010</b>	<b>3</b>
Table no. 1 – Operations performed in the trade registers by categories of registration during December 1990 – December 2010, total by country and by counties, shares of counties in the total by country	3
Table no. 2 – Operations performed in the trade registers by categories of registration during 1990 – December 2010, total by country and counties, share of categories of operations in the total of each county	4
Table no. 3 – Number and structure of incorporations in the trade registers during 1990-December 2010	5
Chart no. 1 – Structure by years of incorporations in the trade register	
Table no. 4 – Number of incorporations in the trade registers by counties and capital sources during 1990 - December 2010	6
Table no. 5 – Number of incorporations in the trade registers by counties and business categories during 1990 –December 2010	7
<b>2.2 Data related to December 2010</b>	<b>8</b>
Table no. 6 – Operations performed in the trade registers by counties and categories of registrations in the month of December 2010	8
Table no. 7 – Number of incorporations in the trade registers by counties and capital sources in the month of December 2010	9
Table no. 8 – Number of incorporations in the trade registers by counties and business categories in the month of December 2010	10
Table no. 9 –Number of incorporations in the trade registers by domains of activity and business categories in the month of December 2010	11-12
Table no. 10 – Number of incorporated trading companies and the value of subscribed share capital, by counties, in the month of December 2010	13
Table no. 11– Number of incorporated trading companies and the value of subscribed share capital by legal forms, in the month of December 2010	14
Chart no. 5 – Average value of subscribed share capital by types of trading companies in the month of December 2010	14

## Definitions

The Trade Register Office was established based on Law No. 26/1990, as republished and subsequently amended and supplemented, operates as an active institution since 1990 and is twofold structured:

- at national level, represented by the National Trade Register Office organized under the authority of the Ministry of Justice
- at local level, represented by the 42 Trade Register Offices attached to Law Courts, organized under the subordination of the National Trade Register Office

Categories of persons liable to registration in the trade register:

- natural persons: authorized natural persons, individual enterprises and family enterprises currently carrying on trading activities;
- legal persons represented by: Trading Companies, National Societies and Companies, National R&D Institutes, Autonomous Administrations, Co-operative Societies, Agricultural Co-operatives, Co-operative Organizations, Economic Interest Groupings, European Economic Interest Groupings, European Societies, European Co-operative Societies, branches of trading companies with legal establishment, operation and incorporation regime of trading company legal form under which they were incorporated.

- **Terms used in tables and charts**

➤ **Number of companies**, depending on the table, represents the number of trading companies incorporated during the reference period, the number of trading companies struck-off from the trade register. The following forms of organization are included: limited liability companies, joint-stock companies, limited partnerships by share, limited partnerships, general partnerships, and branches thereof.

➤ **Value of subscribed share capital:**

- **total, expressed in national currency:** the share capital value resulted by adding up the subscribed values (in cash and in kind) in national currency (lei)

➤ **Regions of economic development:**

<i>North-East:</i>	Suceava, Botoșani, Neamț, Iași, Bacău, Vaslui.
<i>South-East:</i>	Vrancea, Galați, Buzău, Brăila, Tulcea, Constanța.
<i>South-Muntenia:</i>	Argeș, Dâmbovița, Prahova, Teleorman, Giurgiu, Călărași, Ialomița.
<i>South-West Oltenia:</i>	Gorj, Vâlcea, Dolj, Mehedinți, Olt.
<i>West:</i>	Arad, Caraș-Severin, Hunedoara, Timiș.
<i>North-West:</i>	Bihor, Bistrița, Cluj, Satu Mare, Sălaj, Maramureș.
<i>Center:</i>	Alba, Brașov, Covasna, Harghita, Mureș, Sibiu.
<i>Bucharest-Ilfov:</i>	București, Ilfov.

NACE Code – The classification of economic activities in the national economy was approved by GO No. 656/1997, amended by Order No 601/2002 and Order no. 337/2007 of the President of the National Institute of Statistics, and complies with the international classification used in statistic reports and official documents. The activities are ranked by the harmonization principle, by sections, divisions, groups and classes.

#### Abbreviations

- **PF** - Natural Person; the following forms of organization are included in this category: natural persons and family associations registered until 25.04.2008, authorized natural persons, individual enterprises and family enterprises.
- **SNC** - General Partnership
- **SCS** - Limited Partnership
- **SCA** - Limited Partnership by Share
- **SA** - Joint-Stock Company
- **SRL** - Limited Liability Company
- **RA** - Autonomous Administration
- **APJ** - Other legal persons having the obligation to register in the trade register: National R&D Institutes, Economic Interest Groupings, European Economic Interest Groupings, European Societies, European Co-operative Societies, Agricultural Co-operatives, Co-operative Organizations.

#### Sources of Information:

The integrated IT system of the trade register is designed by The National Trade Register Office in compliance with the provisions of the related legislation in force. The source of information consists of the trade registers organized in computerized system, kept by the trade register offices attached to law courts.

Table no. 1

**Operations performed in the trade registers by categories of registration  
during December 1990 – December 2010, total by country and by counties,  
share of counties in the total by country**

Counties	Total of registered operations		out of which :					
			Registered companies		Changes in statutory documents		Strike off companies	
	No.	%	No.	%	No.	%	No.	%
0	1	2	3	4	7	8	11	12
<b>Total ROMÂNIA</b>	<b>14566529</b>	<b>100,0</b>	<b>2085972</b>	<b>100,0</b>	<b>11671587</b>	<b>100,0</b>	<b>808970</b>	<b>100,0</b>
ALBA	220629	1,5	35055	1,7	173935	1,5	11639	1,4
ARAD	344244	2,4	50758	2,4	273123	2,3	20363	2,5
ARGES	352085	2,4	53371	2,6	282556	2,4	16158	2,0
BACAU	338710	2,3	51957	2,5	264336	2,3	22417	2,8
BIHOR	441596	3,0	64810	3,1	354904	3,0	21882	2,7
BISTRITA-NASAUD	176793	1,2	27037	1,3	139429	1,2	10327	1,3
BOTOSANI	136660	0,9	25606	1,2	100175	0,9	10879	1,3
BRASOV	566540	3,9	64437	3,1	480185	4,1	21918	2,7
BRAILA	224151	1,5	29149	1,4	186489	1,6	8513	1,1
BUZAU	251797	1,7	37526	1,8	198145	1,7	16126	2,0
CARAS-SEVERIN	169596	1,2	25249	1,2	132488	1,1	11859	1,5
CALARASI	133255	0,9	21042	1,0	103290	0,9	8923	1,1
CLUJ	644964	4,4	95786	4,6	518396	4,4	30782	3,8
CONSTANTA	621810	4,3	85763	4,1	500045	4,3	36002	4,5
COVASNA	125516	0,9	17844	0,9	100681	0,9	6991	0,9
DAMBOVITA	209952	1,4	39090	1,9	152047	1,3	18815	2,3
DOLJ	391804	2,7	55044	2,6	315245	2,7	21515	2,7
GALATI	369438	2,5	49555	2,4	299510	2,6	20373	2,5
GIURGIU	115206	0,8	17545	0,8	90289	0,8	7372	0,9
GORJ	222518	1,5	24679	1,2	188054	1,6	9785	1,2
HARGHITA	218835	1,5	32681	1,6	175420	1,5	10734	1,3
HUNEDOARA	292192	2,0	42551	2,0	231798	2,0	17843	2,2
IALOMITA	134562	0,9	19355	0,9	105522	0,9	9685	1,2
IASI	481573	3,3	69337	3,3	388634	3,3	23602	2,9
MARAMURES	310041	2,1	52586	2,5	234234	2,0	23221	2,9
MEHEDINTI	148190	1,0	23385	1,1	114304	1,0	10501	1,3
MURES	402736	2,8	51899	2,5	329839	2,8	20998	2,6
NEAMT	309609	2,1	44222	2,1	245264	2,1	20123	2,5
OLT	174322	1,2	28884	1,4	132907	1,1	12531	1,5
PRAHOVA	492346	3,4	69497	3,3	395607	3,4	27242	3,4
SALAJ	129885	0,9	21053	1,0	100379	0,9	8453	1,0
SATU MARE	227194	1,6	35523	1,7	176748	1,5	14923	1,8
SIBIU	317444	2,2	41046	2,0	261404	2,2	14994	1,9
SUCEAVA	344374	2,4	51498	2,5	267907	2,3	24969	3,1
TELEORMAN	155919	1,1	24170	1,2	122633	1,1	9116	1,1
TIMIS	486840	3,3	73743	3,5	388162	3,3	24935	3,1
TULCEA	172072	1,2	21211	1,0	141534	1,2	9327	1,2
VASLUI	181623	1,2	25827	1,2	143199	1,2	12597	1,6
VALCEA	223346	1,5	33553	1,6	174339	1,5	15454	1,9
VRANCEA	178462	1,2	25807	1,2	144713	1,2	7942	1,0
MUN. BUCURESTI	2889905	19,8	385849	18,5	2357370	20,2	146686	18,1
ILFOV	237795	1,6	40992	2,0	186348	1,6	10455	1,3

Table no. 2

**Operations performed in the trade registers during December 1990 –  
December 2010, total by country and counties, share of categories of  
operations in the total of each county**

Counties	Total of registered operations		out of which :					
			Registered companies		Changes in statutory documents		Strike off companies	
	No.	%	No.	%	No.	%	No.	%
0	1	2	3	4	7	8	11	12
<b>Total ROMÂNIA</b>	<b>14566529</b>	<b>100,0</b>	<b>2085972</b>	<b>14,3</b>	<b>11671587</b>	<b>80,1</b>	<b>808970</b>	<b>5,6</b>
ALBA	220629	100,0	35055	15,9	173935	78,8	11639	5,3
ARAD	344244	100,0	50758	14,7	273123	79,3	20363	5,9
ARGES	352085	100,0	53371	15,2	282556	80,3	16158	4,6
BACAU	338710	100,0	51957	15,3	264336	78,0	22417	6,6
BIHOR	441596	100,0	64810	14,7	354904	80,4	21882	5,0
BISTRITA-NASAUD	176793	100,0	27037	15,3	139429	78,9	10327	5,8
BOTOSANI	136660	100,0	25606	18,7	100175	73,3	10879	8,0
BRASOV	566540	100,0	64437	11,4	480185	84,8	21918	3,9
BRAILA	224151	100,0	29149	13,0	186489	83,2	8513	3,8
BUZAU	251797	100,0	37526	14,9	198145	78,7	16126	6,4
CARAS-SEVERIN	169596	100,0	25249	14,9	132488	78,1	11859	7,0
CALARASI	133255	100,0	21042	15,8	103290	77,5	8923	6,7
CLUJ	644964	100,0	95786	14,9	518396	80,4	30782	4,8
CONSTANTA	621810	100,0	85763	13,8	500045	80,4	36002	5,8
COVASNA	125516	100,0	17844	14,2	100681	80,2	6991	5,6
DAMBOVITA	209952	100,0	39090	18,6	152047	72,4	18815	9,0
DOLJ	391804	100,0	55044	14,0	315245	80,5	21515	5,5
GALATI	369438	100,0	49555	13,4	299510	81,1	20373	5,5
GIURGIU	115206	100,0	17545	15,2	90289	78,4	7372	6,4
GORJ	222518	100,0	24679	11,1	188054	84,5	9785	4,4
HARGHITA	218835	100,0	32681	14,9	175420	80,2	10734	4,9
HUNEDOARA	292192	100,0	42551	14,6	231798	79,3	17843	6,1
IALOMITA	134562	100,0	19355	14,4	105522	78,4	9685	7,2
IASI	481573	100,0	69337	14,4	388634	80,7	23602	4,9
MARAMURES	310041	100,0	52586	17,0	234234	75,5	23221	7,5
MEHEDINTI	148190	100,0	23385	15,8	114304	77,1	10501	7,1
MURES	402736	100,0	51899	12,9	329839	81,9	20998	5,2
NEAMT	309609	100,0	44222	14,3	245264	79,2	20123	6,5
OLT	174322	100,0	28884	16,6	132907	76,2	12531	7,2
PRAHOVA	492346	100,0	69497	14,1	395607	80,4	27242	5,5
SALAJ	129885	100,0	21053	16,2	100379	77,3	8453	6,5
SATU MARE	227194	100,0	35523	15,6	176748	77,8	14923	6,6
SIBIU	317444	100,0	41046	12,9	261404	82,3	14994	4,7
SUCEAVA	344374	100,0	51498	15,0	267907	77,8	24969	7,3
TELEORMAN	155919	100,0	24170	15,5	122633	78,7	9116	5,8
TIMIS	486840	100,0	73743	15,1	388162	79,7	24935	5,1
TULCEA	172072	100,0	21211	12,3	141534	82,3	9327	5,4
VASLUI	181623	100,0	25827	14,2	143199	78,8	12597	6,9
VALCEA	223346	100,0	33553	15,0	174339	78,1	15454	6,9
VRANCEA	178462	100,0	25807	14,5	144713	81,1	7942	4,5
MUN. BUCURESTI	2889905	100,0	385849	13,4	2357370	81,6	146686	5,1
ILFOV	237795	100,0	40992	17,2	186348	78,4	10455	4,4

Table no.3

Number and structure of incorporations in the trade registers during December 1990 - December 2010

Period (year, month)	Registered companies		Percentage	
	No.	%	%	%
0	1	2	3	
<b>Total, 30 December 2010, out of which</b>	<b>2085972</b>	<b>100,00</b>		
Year 1990	81	0,00		
Year 1991	95840	4,59		
Year 1992	137456	6,59		
Year 1993	117078	5,61		
Year 1994	137445	6,59		
Year 1995	65479	3,14		
Year 1996	62089	2,98		
Year 1997	55663	2,67		
Year 1998	63873	3,06		
Year 1999	57197	2,74		
Year 2000	57268	2,75		
Year 2001	61265	2,94		
Year 2002	84780	4,06		
Year 2003	123582	5,92		
Year 2004	144284	6,92		
Year 2005	159464	7,64		
Year 2006	135371	6,49		
Year 2007	144728	6,94		
Year 2008	144173	6,91		
Year 2009	116037	5,56		
<b>Year 2010 (I - XII) out of which :</b>	<b>122831</b>			<b>100,0</b>
January	7739			6,3
February	9623			7,8
March	11893			9,1
April	10273			11,3
May	11306			9,7
June	10197			10,7
July	8934			9,7
August	8283			8,5
September	9129			7,9
October	18022			8,7
November	9192			17,1
December	8240			7,4

Note: Column 2 reveals the annual structure of incorporations; column 3 reveals the structure by months during the current year.

Diagram no.1

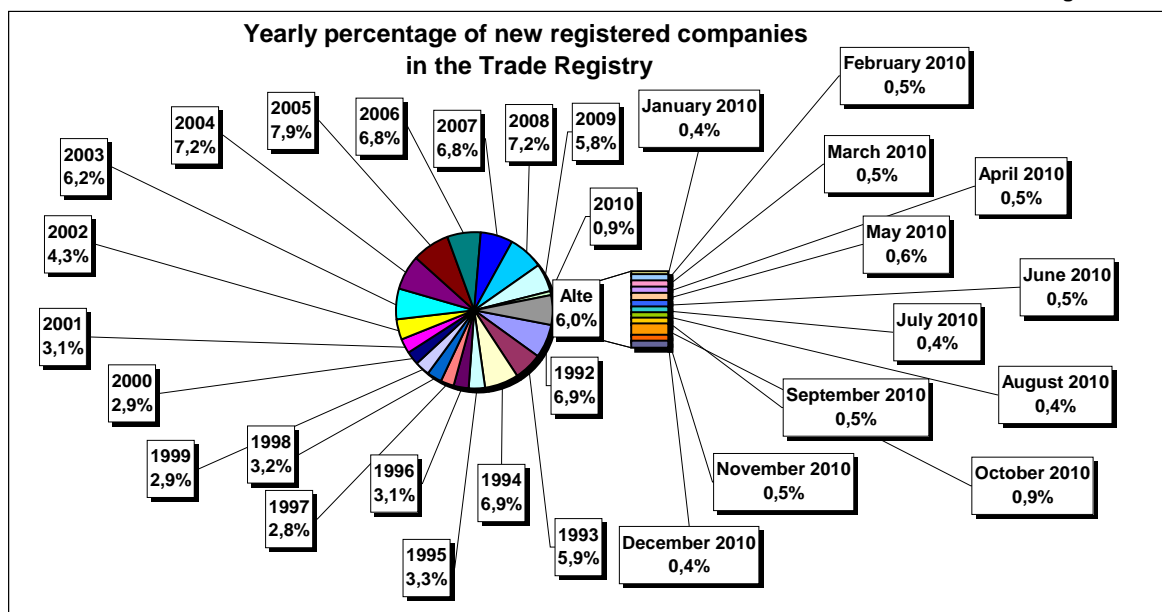


Table no. 4

**Number of incorporations in the trade registers by counties and capital sources during December 1990 - December 2010**

Counties	Total		out of which:							Ranking by: *
			Private capital				State majority capital		Mixed capital (state+private)	
			out of which:				out of which:			
			PF	Companies	SC	APJ	RA	Companies	Companies	
			No.	No.	No.	No.	No.	No.	No.	
0	1	2	3	4	5	6	7	8	9	
<b>Total ROMÂNIA</b>	<b>2085972</b>	<b>100,0</b>	<b>612453</b>	<b>1453294</b>	<b>2038</b>	<b>5711</b>	<b>1393</b>	<b>2416</b>	<b>8674</b>	<b>X</b>
ALBA	35055	1,7	14301	20315	36	148	38	47	170	24
ARAD	50758	2,4	20266	29854	60	170	30	43	336	15
ARGES	53371	2,6	18359	34573	48	175	31	32	153	10
BACAU	51957	2,5	18935	32405	151	161	35	45	226	12
BIHOR	64810	3,1	18961	45223	63	152	40	62	309	7
BISTRITA-NASAUD	27037	1,3	11218	15508	46	99	28	29	109	29
BOTOSANI	25606	1,2	12567	12504	40	179	21	176	119	32
BRASOV	64429	3,1	16033	47905	58	125	49	87	172	8
BRAILA	29157	1,4	9052	19720	42	100	30	46	167	27
BUZAU	37526	1,8	12111	25015	46	153	28	42	131	22
CARAS-SEVERIN	25249	1,2	9306	15551	42	108	39	65	138	33
CALARASI	21042	1,0	7024	13710	22	91	18	77	100	39
CLUJ	95786	4,6	27267	67941	62	158	52	42	264	2
CONSTANTA	85763	4,1	18749	66072	87	210	51	51	543	3
COVASNA	17844	0,9	7097	10471	41	70	24	32	109	41
DAMBOVITA	39090	1,9	18649	20008	32	140	30	75	156	21
DOLJ	55044	2,6	13760	40774	39	169	40	58	204	9
GALATI	49555	2,4	12685	36471	35	140	30	51	143	16
GIURGIU	17546	0,8	4537	12666	15	84	23	110	111	42
GORJ	24678	1,2	7116	17118	26	184	51	83	100	34
HARGHITA	32681	1,6	14878	17348	64	92	24	43	232	26
HUNEDOARA	42551	2,0	12850	29160	33	84	42	95	287	18
IALOMITA	19355	0,9	7705	11388	27	83	15	46	91	40
IASI	69337	3,3	23337	45291	87	169	34	77	344	6
MARAMURES	52586	2,5	22326	29887	43	128	38	41	124	11
MEHEDINTI	23385	1,1	8773	14359	19	89	19	27	99	36
MURES	51899	2,5	20744	30695	68	159	30	34	169	13
NEAMT	44222	2,1	17199	26565	66	166	30	30	166	17
OLT	28884	1,4	11676	16802	27	166	26	64	123	28
PRAHOVA	69497	3,3	23530	45318	67	184	52	74	272	5
SALAJ	21053	1,0	9048	11743	41	110	19	28	64	38
SATU MARE	35523	1,7	12998	22190	41	98	21	42	134	23
SIBIU	41046	2,0	12286	28297	37	121	34	110	161	19
SUCEAVA	51498	2,5	25129	25767	73	210	31	67	221	14
TELEORMAN	24170	1,2	9166	14557	33	163	21	46	184	35
TIMIS	73743	3,5	14495	58566	69	155	38	69	351	4
TULCEA	21211	1,0	8129	12706	36	67	19	42	212	37
VASLUI	25827	1,2	12930	12569	22	113	16	41	136	30
VALCEA	33553	1,6	14217	18904	64	171	42	40	115	25
VRANCEA	25807	1,2	8975	16523	35	115	17	28	114	31
MUN. BUCURESTI	385849	18,5	38118	346150	64	154	116	106	1142	1
ILFOV	40992	2,0	5951	34705	31	98	21	13	173	20

\*) The total number of incorporations (col 1)

Table no. 5

**Number of incorporations in the trade registers by counties and business categories during  
December 1990 – December 2010**

County	Total		out of which:							
			PF	companies: 1464384				RA	SC	APJ
	SNC	SCS		SRL	SA					
	No.	%	No.	No.	No.	No.	No.	No.	No.	
0	1	2	3	4	5	6	7	8	9	10
<b>Total ROMÂNIA</b>	<b>2085972</b>	<b>100,0</b>	<b>612453</b>	<b>32680</b>	<b>1619</b>	<b>1396084</b>	<b>33994</b>	<b>1393</b>	<b>2038</b>	<b>5711</b>
ALBA	35055	1,7	14301	890	11	19056	575	38	36	148
ARAD	50758	2,4	20266	54	13	29456	709	30	60	170
ARGES	53371	2,6	18359	107	15	33791	845	31	48	175
BACAU	51957	2,5	18935	1299	4	30618	754	35	151	161
BIHOR	64810	3,1	18961	127	48	44485	934	40	63	152
BISTRITA-NASAUD	27037	1,3	11218	146	22	15055	423	28	46	99
BOTOSANI	25606	1,2	12567	468	1	11869	461	21	40	179
BRASOV	64437	3,1	16033	239	21	47016	896	49	58	125
BRAILA	29149	1,4	9052	376	12	18996	541	30	42	100
BUZAU	37526	1,8	12111	3747	46	20800	595	28	46	153
CARAS-SEVERIN	25249	1,2	9306	118	9	15152	475	39	42	108
CALARASI	21042	1,0	7024	609	3	12910	365	18	22	91
CLUJ	95786	4,6	27267	2112	21	64752	1362	52	62	158
CONSTANTA	85763	4,1	18749	311	23	64803	1529	51	87	210
COVASNA	17844	0,9	7097	148	4	10148	312	24	41	70
DAMBOVITA	39090	1,9	18649	60	8	19665	506	30	32	140
DOLJ	55044	2,6	13760	1560	8	38548	920	40	39	169
GALATI	49555	2,4	12685	1574	6	34217	868	30	35	140
GIURGIU	17545	0,8	4537	35	8	12508	335	23	15	84
GORJ	24679	1,2	7116	29	1	16764	508	51	26	184
HARGHITA	32681	1,6	14878	62	7	17050	504	24	64	92
HUNEDOARA	42551	2,0	12850	1166	98	27581	697	42	33	84
IALOMITA	19355	0,9	7705	269	12	10889	355	15	27	83
IASI	69337	3,3	23337	508	111	44045	1046	34	87	169
MARAMURES	52586	2,5	22326	1927	23	27490	611	38	43	128
MEHEDINTI	23385	1,1	8773	427	3	13711	344	19	19	89
MURES	51899	2,5	20744	37	34	30138	689	30	68	159
NEAMT	44222	2,1	17199	3293	30	22751	687	30	66	166
OLT	28884	1,4	11676	1611	1	14872	505	26	27	166
PRAHOVA	69497	3,3	23530	3122	15	41584	943	52	67	184
SALAJ	21053	1,0	9048	600	4	10930	301	19	41	110
SATU MARE	35523	1,7	12998	283	9	21591	482	21	41	98
SIBIU	41046	2,0	12286	778	49	27056	685	34	37	121
SUCEAVA	51498	2,5	25129	438	8	25005	604	31	73	210
TELEORMAN	24170	1,2	9166	272	399	13679	437	21	33	163
TIMIS	73743	3,5	14495	616	34	57041	1295	38	69	155
TULCEA	21211	1,0	8129	1363	114	10997	486	19	36	67
VASLUI	25827	1,2	12930	90	13	12217	426	16	22	113
VALCEA	33553	1,6	14217	364	6	18180	509	42	64	171
VRANCEA	25807	1,2	8975	356	10	15831	468	17	35	115
MUN. BUCURESTI	385849	18,5	38118	1039	321	338724	7313	116	64	154
ILFOV	40992	2,0	5951	50	34	34113	694	21	31	98

Table no. 6

**Operations performed in the trade registers by counties and categories of registration  
in the month of December 2010**

County	Total of operations carried on		out of which:					
			New incorporations		Changes in statutory documents		Strike off companies	
	No.	%	No.	%	No.	%	No.	%
0	1	2	3	4	5	6	9	10
<b>Total ROMÂNIA</b>	<b>72379</b>	<b>100,0</b>	<b>8240</b>	<b>11,4</b>	<b>59276</b>	<b>81,9</b>	<b>4863</b>	<b>6,7</b>
ALBA	1036	100,0	198	19,1	736	71,0	102	9,8
ARAD	2042	100,0	295	14,4	1625	79,6	122	6,0
ARGES	1541	100,0	186	12,1	1238	80,3	117	7,6
BACAU	1582	100,0	160	10,1	1196	75,6	226	14,3
BIHOR	1938	100,0	301	15,5	1528	78,8	109	5,6
BISTRITA-NASAUD	932	100,0	82	8,8	804	86,3	46	4,9
BOTOSANI	621	100,0	81	13,0	500	80,5	40	6,4
BRASOV	2391	100,0	207	8,7	2053	85,9	131	5,5
BRAILA	777	100,0	116	14,9	566	72,8	95	12,2
BUZAU	910	100,0	126	13,8	734	80,7	50	5,5
CARAS-SEVERIN	1040	100,0	120	11,5	894	86,0	26	2,5
CALARASI	496	100,0	97	19,6	366	73,8	33	6,7
CLUJ	3544	100,0	312	8,8	2983	84,2	249	7,0
CONSTANTA	3366	100,0	287	8,5	2944	87,5	135	4,0
COVASNA	630	100,0	79	12,5	491	77,9	60	9,5
DAMBOVITA	929	100,0	189	20,3	671	72,2	69	7,4
DOLJ	2630	100,0	317	12,1	2205	83,8	108	4,1
GALATI	1384	100,0	229	16,5	1059	76,5	96	6,9
GIURGIU	820	100,0	84	10,2	699	85,2	37	4,5
GORJ	1043	100,0	132	12,7	875	83,9	36	3,5
HARGHITA	1118	100,0	81	7,2	892	79,8	145	13,0
HUNEDOARA	982	100,0	123	12,5	770	78,4	89	9,1
IALOMITA	474	100,0	74	15,6	364	76,8	36	7,6
IASI	2401	100,0	319	13,3	1852	77,1	230	9,6
MARAMURES	1356	100,0	149	11,0	1120	82,6	87	6,4
MEHEDINTI	834	100,0	102	12,2	698	83,7	34	4,1
MURES	1452	100,0	146	10,1	1217	83,8	89	6,1
NEAMT	1121	100,0	110	9,8	887	79,1	124	11,1
OLT	744	100,0	156	21,0	559	75,1	29	3,9
PRAHOVA	2105	100,0	275	13,1	1669	79,3	161	7,6
SALAJ	908	100,0	87	9,6	762	83,9	59	6,5
SATU MARE	1371	100,0	135	9,8	1181	86,1	55	4,0
SIBIU	1644	100,0	163	9,9	1271	77,3	210	12,8
SUCEAVA	1232	100,0	127	10,3	1001	81,3	104	8,4
TELEORMAN	638	100,0	99	15,5	458	71,8	81	12,7
TIMIS	3187	100,0	304	9,5	2649	83,1	234	7,3
TULCEA	694	100,0	100	14,4	547	78,8	47	6,8
VASLUI	678	100,0	74	10,9	583	86,0	21	3,1
VALCEA	1189	100,0	91	7,7	1006	84,6	92	7,7
VRANCEA	862	100,0	98	11,4	696	80,7	68	7,9
MUN. BUCURESTI	15704	100,0	1500	9,6	13305	84,7	899	5,7
ILFOV	2033	100,0	329	16,2	1622	79,8	82	4,0

\*) by effect of implementation of Law no. 314/2001, art.1 and art. 6

Table no.7

**Number of incorporations in the trade registers by counties and capital sources in the month of December 2010**

County	Total		out of which:						Rnking by: *	
			Private capital				State majority capital			Mixed capital (state+private)
			out of which:				out of which:			
			PF	Companies	SC	APJ	RA	Compani es		Companies
No.	%	No.	No.	No.		No.	No.	No.		
0	1	2	3	4	5		6	7	8	9
<b>Total ROMÂNIA</b>	<b>8240</b>	<b>100,0</b>	<b>3915</b>	<b>4321</b>		<b>3</b>			<b>1</b>	<b>X</b>
ALBA	198	2,4	116	82						13
ARAD	295	3,6	185	110						8
ARGES	186	2,3	98	88						15
BACAU	160	1,9	93	67						17
BIHOR	301	3,7	164	137						7
BISTRITA-NASAUD	82	1,0	54	28						37
BOTOSANI	81	1,0	54	27						38
BRASOV	207	2,5	97	110						12
BRAILA	116	1,4	55	61						27
BUZAU	126	1,5	76	50						24
CARAS-SEVERIN	120	1,5	64	56						26
CALARASI	97	1,2	53	44						33
CLUJ	312	3,8	131	181						5
CONSTANTA	287	3,5	87	200						9
COVASNA	79	1,0	58	21						40
DAMBOVITA	189	2,3	135	54						14
DOLJ	317	3,8	182	135						4
GALATI	229	2,8	141	88						11
GIURGIU	84	1,0	35	49						36
GORJ	132	1,6	89	43						22
HARGHITA	81	1,0	43	38						39
HUNEDOARA	123	1,5	69	54						25
IALOMITA	74	0,9	49	25						41
IASI	319	3,9	155	164						3
MARAMURES	149	1,8	82	67						19
MEHEDINTI	102	1,2	78	23		1				29
MURES	146	1,8	76	70						20
NEAMT	110	1,3	63	46		1				28
OLT	156	1,9	110	46						18
PRAHOVA	275	3,3	132	143						10
SALAJ	87	1,1	53	34						35
SATU MARE	135	1,6	91	44						21
SIBIU	163	2,0	101	62						16
SUCEAVA	127	1,5	78	48		1				23
TELEORMAN	99	1,2	56	43						31
TIMIS	304	3,7	129	175						6
TULCEA	100	1,2	65	35						30
VASLUI	74	0,9	51	23						42
VALCEA	91	1,1	56	35						34
VRANCEA	98	1,2	62	36						32
MUN. BUCURESTI	1500	18,2	292	1207					1	1
ILFOV	329	4,0	57	272						2

\*) The total number of incorporations (col 1)

\*\*\* Less than 0,01%

Table no.8

**Number of incorporations in the trade registers by counties and business categories in the month of December 2010**

County	Total		out of which:							
			PF	companies: 4322				RA	SC	APJ
	SNC	SCS		SRL	SA					
	No.	%	No.	No.	No.	No.	No.	No.	No.	
0	1	2	3	4	5	6	7	8	9	10
<b>Total ROMÂNIA</b>	<b>8240</b>	<b>100,0</b>	<b>3915</b>			<b>4265</b>	<b>57</b>			<b>3</b>
ALBA	198	2,4	116			82				
ARAD	295	3,6	185			108	2			
ARGES	186	2,3	98			87	1			
BACAU	160	1,9	93			66	1			
BIHOR	301	3,7	164			137				
BISTRITA-NASAUD	82	1,0	54			28				
BOTOSANI	81	1,0	54			27				
BRASOV	207	2,5	97			108	2			
BRAILA	116	1,4	55			60	1			
BUZAU	126	1,5	76			50				
CARAS-SEVERIN	120	1,5	64			56				
CALARASI	97	1,2	53			42	2			
CLUJ	312	3,8	131			176	5			
CONSTANTA	287	3,5	87			198	2			
COVASNA	79	1,0	58			21				
DAMBOVITA	189	2,3	135			54				
DOLJ	317	3,8	182			133	2			
GALATI	229	2,8	141			87	1			
GIURGIU	84	1,0	35			48	1			
GORJ	132	1,6	89			43				
HARGHITA	81	1,0	43			37	1			
HUNEDOARA	123	1,5	69			54				
IALOMITA	74	0,9	49			25				
IASI	319	3,9	155			162	2			
MARAMURES	149	1,8	82			67				
MEHEDINTI	102	1,2	78			23				1
MURES	146	1,8	76			68	2			
NEAMT	110	1,3	63			46				1
OLT	156	1,9	110			46				
PRAHOVA	275	3,3	132			139	4			
SALAJ	87	1,1	53			34				
SATU MARE	135	1,6	91			44				
SIBIU	163	2,0	101			59	3			
SUCEAVA	127	1,5	78			47	1			1
TELEORMAN	99	1,2	56			43				
TIMIS	304	3,7	129			173	2			
TULCEA	100	1,2	65			34	1			
VASLUI	74	0,9	51			23				
VALCEA	91	1,1	56			35				
VRANCEA	98	1,2	62			35	1			
MUN. BUCURESTI	1500	18,2	292			1191	17			
ILFOV	329	4,0	57			269	3			

Table no. 9

**Number of incorporations in the trade registers by domains of activity and business categories in the month of December 2010**

CAEN seg.	Field of activity	Total		out of which:							
				PF	companies: 4322				RA	SC	APJ
		No.	%		No.	SNC	SCS	SRL			
				No.		No.	No.	No.	No.	No.	No.
0	1	2	3	4	5	6	7	8	9	10	11
	<b>Total ROMÂNIA</b>	<b>8240</b>	<b>100,0</b>	<b>3915</b>			<b>4265</b>	<b>57</b>			<b>3</b>
1	Agriculture, hunting and related service activities	1333	16,2	1218			112				3
2	Forestry and logging	25	0,3	2			23				
3	Fishing and aquaculture	41	0,5	26			15				
5	Mining of hard and brown coal	1	0,0				1				
6	Extraction of crude petroleum and natural gas										
7	Mining of metal ores										
8	Other mining and quarrying	9	0,1	1			8				
9	Mining support service activities	2	0,0	1			1				
10	Manufacture of food products	117	1,4	38			79				
11	Manufacture of beverages	13	0,2	8			5				
12	Manufacture of tobacco products										
13	Manufacture of textiles	17	0,2	4			11	2			
14	Manufacture of wearing apparel	48	0,6	10			36	2			
15	Tanning and dressing of leather; manufacture of luggage, handbags, saddlery, harness and footwear; dressing and dyeing of fur	18	0,2	2			16				
16	Manufacture of wood and of products of wood and cork, except furniture; manufacture of articles of straw and plaiting materials	51	0,6	20			31				
17	Manufacture of paper and paper products	6	0,1				6				
18	Printing and reproduction of recorded media	12	0,1	3			9				
19	Manufacture of coke and refined petroleum products	1	0,0				1				
20	Manufacture of chemicals and chemical products	4	0,0	1			3				
21	Manufacture of basic pharmaceutical products and pharmaceutical preparations										
22	Manufacture of rubber and plastic products	20	0,2	1			19				
23	Manufacture of other non-metallic mineral products	15	0,2	6			9				
24	Manufacture of basic metals	1	0,0				1				
25	Manufacture of fabricated metal products, except machinery and equipment	45	0,5	21			24				
26	Manufacture of computer, electronic and optical products	5	0,1				5				
27	Manufacture of electrical equipment	4	0,0	1			3				
28	Manufacture of machinery and equipment n.e.c.	10	0,1	1			9				
29	Manufacture of motor vehicles, trailers and semi-trailers	4	0,0				4				
30	Manufacture of other transport equipment	4	0,0	1			3				
31	Manufacture of furniture	31	0,4	8			23				
32	Other manufacturing	32	0,4	18			14				
33	Repair and installation of machinery and equipment	30	0,4	15			15				
35	Electricity, gas, steam and air conditioning supply	81	1,0				79	2			
36	Water collection, treatment and supply	7	0,1				6	1			
37	Sewerage	5	0,1	3			2				
38	Waste collection, treatment and disposal activities; materials recovery	58	0,7	7			49	2			
39	Remediation activities and other waste management services	1	0,0				1				
41	Construction of buildings	263	3,2	19			243	1			
42	Civil engineering	30	0,4	2			28				
43	Specialised construction activities	189	2,3	73			115	1			
45	Wholesale and retail trade and repair of motor vehicles and motorcycles	180	2,2	51			129				
46	Wholesale trade, except of motor vehicles and motorcycles	776	9,4	142			631	3			
47	Retail trade, except of motor vehicles and motorcycles	1524	18,5	764			760				
49	Land transport and transport via pipelines	449	5,4	159			287	3			
50	Water transport	3	0,0				3				



Table no. 10

**Number of incorporated trading companies and the value of the subscribed share capital, by counties, in the month of December 2010**

County	Total registered companies		Subscribed capital		Average subscribed capital on company
	No.	%	thousand Lei	%	thousand Lei
0	1	2	3	4	5
<b>Total ROMÂNIA</b>	<b>4322</b>	<b>100,0</b>	<b>153985,8</b>	<b>100,0</b>	<b>36,0</b>
ALBA	82	1,9	26,4	0,0	0,3
ARAD	110	2,5	3908,3	2,5	35,5
ARGES	88	2,0	43,0	0,0	0,5
BACAU	67	1,6	133,6	0,1	2,1
BIHOR	137	3,2	484,0	0,3	3,5
BISTRITA-NASAUD	28	0,6	8,8	***	0,3
BOTOSANI	27	0,6	7,9	***	0,3
BRASOV	110	2,5	9756,7	6,3	90,3
BRAILA	61	1,4	4146,1	2,7	68,0
BUZAU	50	1,2	241,6	0,2	4,8
CARAS-SEVERIN	56	1,3	891,5	0,6	15,9
CALARASI	44	1,0	18,5	0,0	0,5
CLUJ	181	4,2	1474,3	1,0	8,2
CONSTANTA	200	4,6	880,3	0,6	4,5
COVASNA	21	0,5	327,6	0,2	15,6
DAMBOVITA	54	1,2	125,4	0,1	2,3
DOLJ	135	3,1	162,0	0,1	1,2
GALATI	88	2,0	59,9	0,0	0,7
GIURGIU	49	1,1	21145,6	13,7	431,5
GORJ	43	1,0	10,5	***	0,2
HARGHITA	38	0,9	94,5	0,1	2,6
HUNEDOARA	54	1,2	366,4	0,2	6,8
IALOMITA	25	0,6	173,0	0,1	6,9
IASI	164	3,8	429,9	0,3	2,7
MARAMURES	67	1,6	80,5	0,1	1,2
MEHEDINTI	23	0,5	245,9	0,2	10,7
MURES	70	1,6	344,9	0,2	5,1
NEAMT	46	1,1	66,2	0,0	1,4
OLT	46	1,1	23,7	0,0	0,5
PRAHOVA	143	3,3	19707,9	12,8	140,8
SALAJ	34	0,8	268,4	0,2	7,9
SATU MARE	44	1,0	13,0	***	0,3
SIBIU	62	1,4	127,6	0,1	2,1
SUCEAVA	48	1,1	151,0	0,1	3,1
TELEORMAN	43	1,0	9,6	***	0,2
TIMIS	175	4,0	833,4	0,5	4,8
TULCEA	35	0,8	383,1	0,2	10,9
VASLUI	23	0,5	54,7	0,0	2,4
VALCEA	35	0,8	19,3	0,0	0,6
VRANCEA	36	0,8	1124,5	0,7	31,2
MUN. BUCURESTI	1208	28,0	75643,8	49,1	63,5
ILFOV	272	6,3	9972,8	6,5	36,7

*Note: The average does not include filials because according to the Law no.31/1990 they are not juridical persons*

*\*\*\* Less than 0,01%*

Table no. 11

**Number of incorporated trading companies and the value of the subscribed share capital by legal forms, in the month of December 2010**

Company type	Total registered companies		Subscribed capital		Average subscribed capital on company
	No.	%	thousand Lei	%	thousand Lei
0	1	2	3	4	5
<b>Total ROMÂNIA</b>	4322	100,0	153985,8	100,0	36,0
SNC					
SCS					
SA	57	1,3	99464,4	64,6	3683,9
SRL	4265	98,7	54521,3	35,4	12,8

*Note: The average does not include filials because according to the Law no.31/1990 they are not juridical persons*

\*\*\* Less than 0,01%

Diagram no.5

