



MINISTRY OF JUSTICE

THE NATIONAL TRADE REGISTER OFFICE

București, Bd. Unirii nr. 74, Bl. J3b, tronson II+III, sector 3; Telefon: +40 21 316.08.04, 316.08.10; Fax: +40 21 316.08.03; Cod poștal: 030837  
Website: [www.onrc.ro](http://www.onrc.ro); E-mail: [onrc@onrc.ro](mailto:onrc@onrc.ro); Cod Identificare Fiscală: 14942091

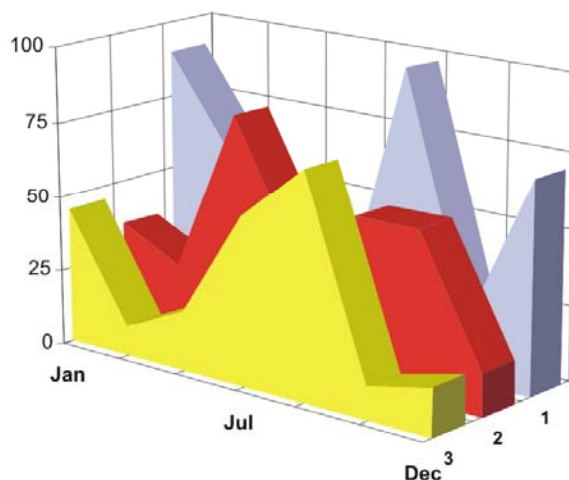
# OPERATIONS IN THE CENTRAL TRADE REGISTER

## STATISTIC SYNTHESIS

OF

**RECORDS IN THE CENTRAL TRADE REGISTER**

**- 30<sup>th</sup> November 2010 - provisional data -**



- ISSUE No. 228 -

## MINISTRY OF JUSTICE THE NATIONAL TRADE REGISTER OFFICE

- Operations such as incorporation of trading companies, submission of changes, and strike-off are carried out based on Law No.26/1990, as republished, Law No.31/1990, as republished and on the Methodological Norms no. P/608/1998.
- This work reflects the evolution of the operations with the Trade Register Office attached to Bucharest Law Court and the Trade Register Offices attached to County Law Courts.
- The data contained in the Central Trade Register refer to operations for which law sets out the obligation of being registered in the trade registers kept by the 42 trade register offices attached to law courts.

*• The content of this publication shall not be reproduced, partly or entirely, in original or modified form, and shall not be stored in a recovery system and shall not be transmitted in any form or by any means without prior written authorization of the Ministry of Justice – The National Trade Register Office.*

*• The content of this publication December be used in articles, studies, books, as supporting or explanatory data only by clearly and accurately indicating the source.*

<b>CONTENTS</b>	<b>Page</b>
<b>1 Definitions</b>	<b>1</b>
<b>2.1 Data related to the period December 1990 – November 2010</b>	<b>3</b>
Table no. 1 – Operations performed in the trade registers by categories of registration during December 1990 – November 2010, total by country and by counties, shares of counties in the total by country	3
Table no. 2 – Operations performed in the trade registers by categories of registration during 1990 – November 2010, total by country and counties, share of categories of operations in the total of each county	4
Table no. 3 – Number and structure of incorporations in the trade registers during 1990-November 2010	5
Chart no. 1 – Structure by years of incorporations in the trade register	
Table no. 4 – Number of incorporations in the trade registers by counties and capital sources during 1990 - November 2010	6
Table no. 5 – Number of incorporations in the trade registers by counties and business categories during 1990 –November 2010	7
<b>2.2 Data related to November 2010</b>	<b>8</b>
Table no. 6 – Operations performed in the trade registers by counties and categories of registrations in the month of November 2010	8
Table no. 7 – Number of incorporations in the trade registers by counties and capital sources in the month of November 2010	9
Table no. 8 – Number of incorporations in the trade registers by counties and business categories in the month of November 2010	10
Table no. 9 –Number of incorporations in the trade registers by domains of activity and business categories in the month of November 2010	11-12
Table no. 10 – Number of incorporated trading companies and the value of subscribed share capital, by counties, in the month of November 2010	13
Table no. 11– Number of incorporated trading companies and the value of subscribed share capital by legal forms, in the month of November 2010	14
Chart no. 5 – Average value of subscribed share capital by types of trading companies in the month of November 2010	14

## Definitions

The Trade Register Office was established based on Law No. 26/1990, as republished and subsequently amended and supplemented, operates as an active institution since 1990 and is twofold structured:

- at national level, represented by the National Trade Register Office organized under the authority of the Ministry of Justice
- at local level, represented by the 42 Trade Register Offices attached to Law Courts, organized under the subordination of the National Trade Register Office

Categories of persons liable to registration in the trade register:

- natural persons: authorized natural persons, individual enterprises and family enterprises currently carrying on trading activities;
  - legal persons represented by: Trading Companies, National Societies and Companies, National R&D Institutes, Autonomous Administrations, Co-operative Societies, Agricultural Co-operatives, Co-operative Organizations, Economic Interest Groupings, European Economic Interest Groupings, European Societies, European Co-operative Societies, branches of trading companies with legal establishment, operation and incorporation regime of trading company legal form under which they were incorporated.
- **Terms used in tables and charts**
    - **Number of companies**, depending on the table, represents the number of trading companies incorporated during the reference period, the number of trading companies struck-off from the trade register. The following forms of organization are included: limited liability companies, joint-stock companies, limited partnerships by share, limited partnerships, general partnerships, and branches thereof.
    - **Value of subscribed share capital:**
      - **total, expressed in national currency:** the share capital value resulted by adding up the subscribed values (in cash and in kind) in national currency (lei)

- **Regions of economic development:**

<i>North-East:</i>	Suceava, Botoșani, Neamț, Iași, Bacău, Vaslui.
<i>South-East:</i>	Vrancea, Galați, Buzău, Brăila, Tulcea, Constanța.
<i>South-Muntenia:</i>	Argeș, Dâmbovița, Prahova, Teleorman, Giurgiu, Călărași, Ialomița.
<i>South-West Oltenia:</i>	Gorj, Vâlcea, Dolj, Mehedinți, Olt.
<i>West:</i>	Arad, Caraș-Severin, Hunedoara, Timiș.
<i>North-West:</i>	Bihor, Bistrița, Cluj, Satu Mare, Sălaj, Maramureș.
<i>Center:</i>	Alba, Brașov, Covasna, Harghita, Mureș, Sibiu.
<i>Bucharest-Ilfov:</i>	București, Ilfov.

NACE Code – The classification of economic activities in the national economy was approved by GO No. 656/1997, amended by Order No 601/2002 and Order no. 337/2007 of the President of the National Institute of Statistics, and complies with the international classification used in statistic reports and official documents. The activities are ranked by the harmonization principle, by sections, divisions, groups and classes.

### Abbreviations

- **PF** - Natural Person; the following forms of organization are included in this category: natural persons and family associations registered until 25.04.2008, authorized natural persons, individual enterprises and family enterprises.
- **SNC** - General Partnership
- **SCS** - Limited Partnership
- **SCA** - Limited Partnership by Share
- **SA** - Joint-Stock Company
- **SRL** - Limited Liability Company
- **RA** - Autonomous Administration
- **APJ** - Other legal persons having the obligation to register in the trade register: National R&D Institutes, Economic Interest Groupings, European Economic Interest Groupings, European Societies, European Co-operative Societies, Agricultural Co-operatives, Co-operative Organizations.

### Sources of Information:

The integrated IT system of the trade register is designed by The National Trade Register Office in compliance with the provisions of the related legislation in force. The source of information consists of the trade registers organized in computerized system, kept by the trade register offices attached to law courts.



Table no. 1

**Operations performed in the trade registers by categories of registration  
during December 1990 – November 2010, total by country and by counties,  
share of counties in the total by country**

Counties	Total of registered operations		out of which :					
			Registered companies		Changes in statutory documents		Strike off companies	
	No.	%	No.	%	No.	%	No.	%
0	1	2	3	4	7	8	11	12
<b>Total ROMÂNIA</b>	<b>14494151</b>	<b>100,0</b>	<b>2077733</b>	<b>100,0</b>	<b>11612311</b>	<b>100,0</b>	<b>804107</b>	<b>100,0</b>
ALBA	219593	1,5	34857	1,7	173199	1,5	11537	1,4
ARAD	342202	2,4	50463	2,4	271498	2,3	20241	2,5
ARGES	350544	2,4	53185	2,6	281318	2,4	16041	2,0
BACAU	337128	2,3	51797	2,5	263140	2,3	22191	2,8
BIHOR	439658	3,0	64509	3,1	353376	3,0	21773	2,7
BISTRITA-NASAUD	175861	1,2	26955	1,3	138625	1,2	10281	1,3
BOTOSANI	136039	0,9	25525	1,2	99675	0,9	10839	1,3
BRASOV	564149	3,9	64230	3,1	478132	4,1	21787	2,7
BRAILA	223374	1,5	29033	1,4	185923	1,6	8418	1,0
BUZAU	250887	1,7	37400	1,8	197411	1,7	16076	2,0
CARAS-SEVERIN	168556	1,2	25129	1,2	131594	1,1	11833	1,5
CALARASI	132759	0,9	20945	1,0	102924	0,9	8890	1,1
CLUJ	641420	4,4	95474	4,6	515413	4,4	30533	3,8
CONSTANTA	618444	4,3	85476	4,1	497101	4,3	35867	4,5
COVASNA	124886	0,9	17765	0,9	100190	0,9	6931	0,9
DAMBOVITA	209023	1,4	38901	1,9	151376	1,3	18746	2,3
DOLJ	389174	2,7	54727	2,6	313040	2,7	21407	2,7
GALATI	368054	2,5	49326	2,4	298451	2,6	20277	2,5
GIURGIU	114386	0,8	17461	0,8	89590	0,8	7335	0,9
GORJ	221475	1,5	24547	1,2	187179	1,6	9749	1,2
HARGHITA	217717	1,5	32600	1,6	174528	1,5	10589	1,3
HUNEDOARA	291210	2,0	42428	2,0	231028	2,0	17754	2,2
IALOMITA	134088	0,9	19281	0,9	105158	0,9	9649	1,2
IASI	479172	3,3	69018	3,3	386782	3,3	23372	2,9
MARAMURES	308685	2,1	52437	2,5	233114	2,0	23134	2,9
MEHEDINTI	147356	1,0	23283	1,1	113606	1,0	10467	1,3
MURES	401284	2,8	51753	2,5	328622	2,8	20909	2,6
NEAMT	308488	2,1	44112	2,1	244377	2,1	19999	2,5
OLT	173578	1,2	28728	1,4	132348	1,1	12502	1,6
PRAHOVA	490241	3,4	69222	3,3	393938	3,4	27081	3,4
SALAJ	128977	0,9	20966	1,0	99617	0,9	8394	1,0
SATU MARE	225823	1,6	35388	1,7	175567	1,5	14868	1,8
SIBIU	315800	2,2	40883	2,0	260133	2,2	14784	1,8
SUCEAVA	343142	2,4	51371	2,5	266906	2,3	24865	3,1
TELEORMAN	155281	1,1	24071	1,2	122175	1,1	9035	1,1
TIMIS	483653	3,3	73439	3,5	385513	3,3	24701	3,1
TULCEA	171378	1,2	21111	1,0	140987	1,2	9280	1,2
VASLUI	180945	1,2	25753	1,2	142616	1,2	12576	1,6
VALCEA	222157	1,5	33462	1,6	173333	1,5	15362	1,9
VRANCEA	177600	1,2	25709	1,2	144017	1,2	7874	1,0
MUN. BUCURESTI	2874202	19,8	384350	18,5	2344065	20,2	145787	18,1
ILFOV	235762	1,6	40663	2,0	184726	1,6	10373	1,3



Table no. 2

**Operations performed in the trade registers during December 1990 –  
November 2010, total by country and counties, share of categories of  
operations in the total of each county**

Counties	Total of registered operations		out of which :					
			Registered companies		Changes in statutory documents		Strike off companies	
	No.	%	No.	%	No.	%	No.	%
0	1	2	3	4	7	8	11	12
<b>Total ROMÂNIA</b>	<b>14494151</b>	<b>100,0</b>	<b>2077733</b>	<b>14,3</b>	<b>11612311</b>	<b>80,1</b>	<b>804107</b>	<b>5,5</b>
ALBA	219593	100,0	34857	15,9	173199	78,9	11537	5,3
ARAD	342202	100,0	50463	14,7	271498	79,3	20241	5,9
ARGES	350544	100,0	53185	15,2	281318	80,3	16041	4,6
BACAU	337128	100,0	51797	15,4	263140	78,1	22191	6,6
BIHOR	439658	100,0	64509	14,7	353376	80,4	21773	5,0
BISTRITA-NASAUD	175861	100,0	26955	15,3	138625	78,8	10281	5,8
BOTOSANI	136039	100,0	25525	18,8	99675	73,3	10839	8,0
BRASOV	564149	100,0	64230	11,4	478132	84,8	21787	3,9
BRAILA	223374	100,0	29033	13,0	185923	83,2	8418	3,8
BUZAU	250887	100,0	37400	14,9	197411	78,7	16076	6,4
CARAS-SEVERIN	168556	100,0	25129	14,9	131594	78,1	11833	7,0
CALARASI	132759	100,0	20945	15,8	102924	77,5	8890	6,7
CLUJ	641420	100,0	95474	14,9	515413	80,4	30533	4,8
CONSTANTA	618444	100,0	85476	13,8	497101	80,4	35867	5,8
COVASNA	124886	100,0	17765	14,2	100190	80,2	6931	5,5
DAMBOVITA	209023	100,0	38901	18,6	151376	72,4	18746	9,0
DOLJ	389174	100,0	54727	14,1	313040	80,4	21407	5,5
GALATI	368054	100,0	49326	13,4	298451	81,1	20277	5,5
GIURGIU	114386	100,0	17461	15,3	89590	78,3	7335	6,4
GORJ	221475	100,0	24547	11,1	187179	84,5	9749	4,4
HARGHITA	217717	100,0	32600	15,0	174528	80,2	10589	4,9
HUNEDOARA	291210	100,0	42428	14,6	231028	79,3	17754	6,1
IALOMITA	134088	100,0	19281	14,4	105158	78,4	9649	7,2
IASI	479172	100,0	69018	14,4	386782	80,7	23372	4,9
MARAMURES	308685	100,0	52437	17,0	233114	75,5	23134	7,5
MEHEDINTI	147356	100,0	23283	15,8	113606	77,1	10467	7,1
MURES	401284	100,0	51753	12,9	328622	81,9	20909	5,2
NEAMT	308488	100,0	44112	14,3	244377	79,2	19999	6,5
OLT	173578	100,0	28728	16,6	132348	76,2	12502	7,2
PRAHOVA	490241	100,0	69222	14,1	393938	80,4	27081	5,5
SALAJ	128977	100,0	20966	16,3	99617	77,2	8394	6,5
SATU MARE	225823	100,0	35388	15,7	175567	77,7	14868	6,6
SIBIU	315800	100,0	40883	12,9	260133	82,4	14784	4,7
SUCEAVA	343142	100,0	51371	15,0	266906	77,8	24865	7,2
TELEORMAN	155281	100,0	24071	15,5	122175	78,7	9035	5,8
TIMIS	483653	100,0	73439	15,2	385513	79,7	24701	5,1
TULCEA	171378	100,0	21111	12,3	140987	82,3	9280	5,4
VASLUI	180945	100,0	25753	14,2	142616	78,8	12576	7,0
VALCEA	222157	100,0	33462	15,1	173333	78,0	15362	6,9
VRANCEA	177600	100,0	25709	14,5	144017	81,1	7874	4,4
MUN. BUCURESTI	2874202	100,0	384350	13,4	2344065	81,6	145787	5,1
ILFOV	235762	100,0	40663	17,2	184726	78,4	10373	4,4

Table no.3

Number and structure of incorporations in the trade registers during December 1990 - November 2010

Period (year, month)	Registered companies		Percentage	
	No.	%	%	%
0	1	2	3	
<b>Total, 30 November 2010, out of which</b>	<b>2077733</b>	<b>100,00</b>		
Year 1990	81	0,00		
Year 1991	95840	4,61		
Year 1992	137456	6,62		
Year 1993	117078	5,63		
Year 1994	137445	6,62		
Year 1995	65479	3,15		
Year 1996	62089	2,99		
Year 1997	55663	2,68		
Year 1998	63873	3,07		
Year 1999	57197	2,75		
Year 2000	57268	2,76		
Year 2001	61265	2,95		
Year 2002	84780	4,08		
Year 2003	123582	5,95		
Year 2004	144284	6,94		
Year 2005	159464	7,67		
Year 2006	135371	6,52		
Year 2007	144728	6,97		
Year 2008	144173	6,94		
Year 2009	116037	5,58		
<b>Year 2010 (I - XII) out of which :</b>	<b>114591</b>		<b>100,0</b>	
January	7739			6,8
February	9623			8,4
March	11893			10,3
April	10273			8,9
May	11306			9,8
June	10197			8,9
July	8934			7,8
August	8283			7,2
September	9129			8,0
October	18022			15,7
November	9192			8,0

Note: Column 2 reveals the annual structure of incorporations; column 3 reveals the structure by months during the current year.

Diagram no.1

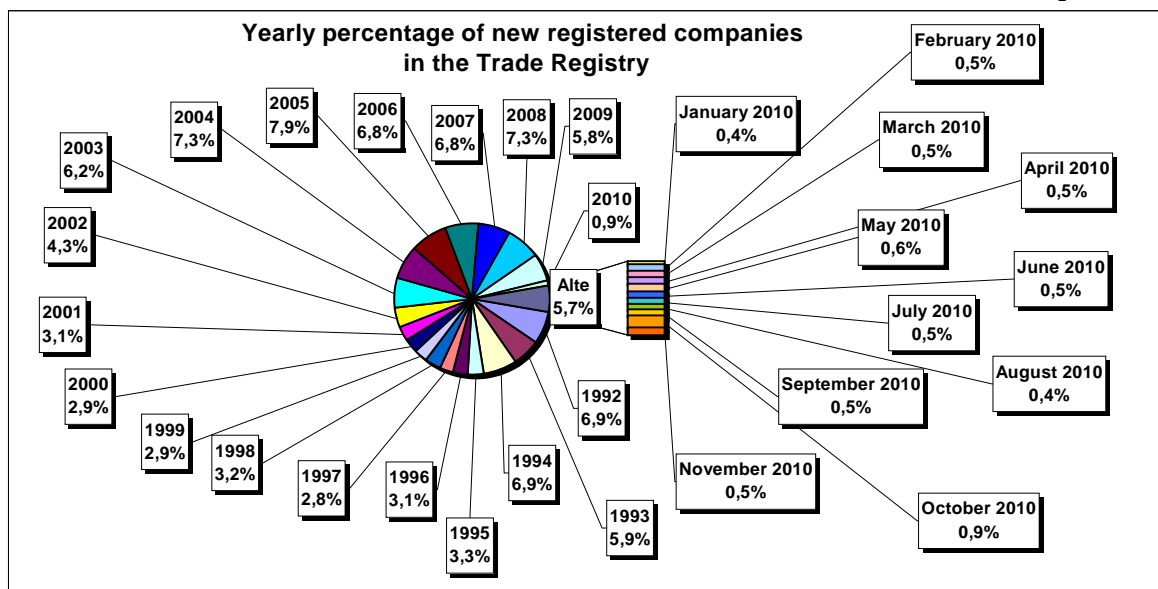


Table no. 4

**Number of incorporations in the trade registers by counties and capital sources during December 1990 - November 2010**

Counties	Total		out of which:						Ranking by: *	
			Private capital				State majority capital			Mixed capital (state+private)
			out of which:				out of which:			
			PF	Companies	SC	APJ	RA	Companies		Companies
No.	%	No.	No.	No.	No.	No.	No.	No.		
0	1	2	3	4	5	6	6	7	8	9
<b>Total ROMÂNIA</b>	<b>2077733</b>	<b>100,0</b>	<b>608538</b>	<b>1448973</b>	<b>2039</b>	<b>5708</b>	<b>1393</b>	<b>2416</b>	<b>8673</b>	<b>X</b>
ALBA	34857	1,7	14185	20233	36	148	38	47	170	24
ARAD	50463	2,4	20081	29744	60	170	30	43	336	15
ARGES	53185	2,6	18261	34485	48	175	31	32	153	10
BACAU	51797	2,5	18842	32338	151	161	35	45	226	12
BIHOR	64509	3,1	18797	45086	63	152	40	62	309	7
BISTRITA-NASAUD	26955	1,3	11164	15480	46	99	28	29	109	29
BOTOSANI	25525	1,2	12513	12477	40	179	21	176	119	32
BRASOV	64222	3,1	15936	47795	58	125	49	87	172	8
BRAILA	29041	1,4	8997	19659	42	100	30	46	167	27
BUZAU	37400	1,8	12035	24965	46	153	28	42	131	22
CARAS-SEVERIN	25129	1,2	9242	15495	42	108	39	65	138	33
CALARASI	20945	1,0	6971	13666	22	91	18	77	100	39
CLUJ	95474	4,6	27136	67760	62	158	52	42	264	2
CONSTANTA	85476	4,1	18662	65872	87	210	51	51	543	3
COVASNA	17765	0,9	7039	10450	41	70	24	32	109	41
DAMBOVITA	38901	1,9	18514	19954	32	140	30	75	156	21
DOLJ	54727	2,6	13578	40639	39	169	40	58	204	9
GALATI	49326	2,4	12544	36383	35	140	30	51	143	16
GIURGIU	17462	0,8	4502	12617	15	84	23	110	111	42
GORJ	24546	1,2	7027	17075	26	184	51	83	100	34
HARGHITA	32600	1,6	14835	17310	64	92	24	43	232	26
HUNEDOARA	42428	2,0	12781	29106	33	84	42	95	287	18
IALOMITA	19281	0,9	7656	11363	27	83	15	46	91	40
IASI	69018	3,3	23182	45127	87	169	34	77	344	6
MARAMURES	52437	2,5	22244	29820	43	128	38	41	124	11
MEHEDINTI	23283	1,1	8695	14336	19	88	19	27	99	36
MURES	51753	2,5	20668	30625	68	159	30	34	169	13
NEAMT	44112	2,1	17136	26519	66	165	30	30	166	17
OLT	28728	1,4	11566	16756	27	166	26	64	123	28
PRAHOVA	69222	3,3	23398	45175	67	184	52	74	272	5
SALAJ	20966	1,0	8995	11709	41	110	19	28	64	38
SATU MARE	35388	1,7	12907	22146	41	98	21	42	134	23
SIBIU	40883	2,0	12185	28235	37	121	34	110	161	19
SUCEAVA	51371	2,5	25051	25719	73	209	31	67	221	14
TELEORMAN	24071	1,2	9110	14514	33	163	21	46	184	35
TIMIS	73439	3,5	14366	58391	69	155	38	69	351	4
TULCEA	21111	1,0	8064	12671	36	67	19	42	212	37
VASLUI	25753	1,2	12879	12546	22	113	16	41	136	30
VALCEA	33462	1,6	14161	18869	64	171	42	40	115	25
VRANCEA	25709	1,2	8913	16487	35	115	17	28	114	31
MUN. BUCURESTI	384350	18,5	37826	344943	65	154	116	106	1141	1
ILFOV	40663	2,0	5894	34433	31	98	21	13	173	20

\*) The total number of incorporations (col 1)

Table no. 5

**Number of incorporations in the trade registers by counties and business categories during  
December 1990 – November 2010**

County	Total		out of which:						RA	SC	APJ
			PF	companies: 1460062							
	SNC	SCS		SRL	SA	No.	No.	No.			
	No.	%	No.	No.	No.				No.	No.	No.
0	1	2	3	4	5	6	7	8	9	10	
<b>Total ROMÂNIA</b>	<b>2077733</b>	<b>100,0</b>	<b>608538</b>	<b>32680</b>	<b>1619</b>	<b>1391819</b>	<b>33937</b>	<b>1393</b>	<b>2039</b>	<b>5708</b>	
ALBA	34857	1,7	14185	890	11	18974	575	38	36	148	
ARAD	50463	2,4	20081	54	13	29348	707	30	60	170	
ARGES	53185	2,6	18261	107	15	33704	844	31	48	175	
BACAU	51797	2,5	18842	1299	4	30552	753	35	151	161	
BIHOR	64509	3,1	18797	127	48	44348	934	40	63	152	
BISTRITA-NASAUD	26955	1,3	11164	146	22	15027	423	28	46	99	
BOTOSANI	25525	1,2	12513	468	1	11842	461	21	40	179	
BRASOV	64230	3,1	15936	239	21	46908	894	49	58	125	
BRAILA	29033	1,4	8997	376	12	18936	540	30	42	100	
BUZAU	37400	1,8	12035	3747	46	20750	595	28	46	153	
CARAS-SEVERIN	25129	1,2	9242	118	9	15096	475	39	42	108	
CALARASI	20945	1,0	6971	609	3	12868	363	18	22	91	
CLUJ	95474	4,6	27136	2112	21	64576	1357	52	62	158	
CONSTANTA	85476	4,1	18662	311	23	64605	1527	51	87	210	
COVASNA	17765	0,9	7039	148	4	10127	312	24	41	70	
DAMBOVITA	38901	1,9	18514	60	8	19611	506	30	32	140	
DOLJ	54727	2,6	13578	1560	8	38415	918	40	39	169	
GALATI	49326	2,4	12544	1574	6	34130	867	30	35	140	
GIURGIU	17461	0,8	4502	35	8	12460	334	23	15	84	
GORJ	24547	1,2	7027	29	1	16721	508	51	26	184	
HARGHITA	32600	1,6	14835	62	7	17013	503	24	64	92	
HUNEDOARA	42428	2,0	12781	1166	98	27527	697	42	33	84	
IALOMITA	19281	0,9	7656	269	12	10864	355	15	27	83	
IASI	69018	3,3	23182	508	111	43883	1044	34	87	169	
MARAMURES	52437	2,5	22244	1927	23	27423	611	38	43	128	
MEHEDINTI	23283	1,1	8695	427	3	13688	344	19	19	88	
MURES	51753	2,5	20668	37	34	30070	687	30	68	159	
NEAMT	44112	2,1	17136	3293	30	22705	687	30	66	165	
OLT	28728	1,4	11566	1611	1	14826	505	26	27	166	
PRAHOVA	69222	3,3	23398	3122	15	41445	939	52	67	184	
SALAJ	20966	1,0	8995	600	4	10896	301	19	41	110	
SATU MARE	35388	1,7	12907	283	9	21547	482	21	41	98	
SIBIU	40883	2,0	12185	778	49	26997	682	34	37	121	
SUCEAVA	51371	2,5	25051	438	8	24958	603	31	73	209	
TELEORMAN	24071	1,2	9110	272	399	13636	437	21	33	163	
TIMIS	73439	3,5	14366	616	34	56868	1293	38	69	155	
TULCEA	21111	1,0	8064	1363	114	10963	485	19	36	67	
VASLUI	25753	1,2	12879	90	13	12194	426	16	22	113	
VALCEA	33462	1,6	14161	364	6	18145	509	42	64	171	
VRANCEA	25709	1,2	8913	356	10	15796	467	17	35	115	
MUN. BUCURESTI	384350	18,5	37826	1039	321	337533	7296	116	65	154	
ILFOV	40663	2,0	5894	50	34	33844	691	21	31	98	

Table no. 6

**Operations performed in the trade registers by counties and categories of registration  
in the month of November 2010**

County	Total of operations carried on		out of which:					
			New incorporations		Changes in statutory documents		Strike off companies	
	No.	%	No.	%	No.	%	No.	%
0	1	2	3	4	5	6	9	10
<b>Total ROMÂNIA</b>	<b>74813</b>	<b>100,0</b>	<b>9192</b>	<b>12,3</b>	<b>61259</b>	<b>81,9</b>	<b>4362</b>	<b>5,8</b>
ALBA	1129	100,0	248	22,0	809	71,7	72	6,4
ARAD	2011	100,0	206	10,2	1570	78,1	235	11,7
ARGES	1471	100,0	217	14,8	1180	80,2	74	5,0
BACAU	1811	100,0	221	12,2	1490	82,3	100	5,5
BIHOR	1928	100,0	342	17,7	1480	76,8	106	5,5
BISTRITA-NASAUD	1242	100,0	151	12,2	1058	85,2	33	2,7
BOTOSANI	679	100,0	107	15,8	536	78,9	36	5,3
BRASOV	897	100,0	128	14,3	624	69,6	145	16,2
BRAILA	2267	100,0	241	10,6	1960	86,5	66	2,9
BUZAU	1061	100,0	132	12,4	853	80,4	76	7,2
CARAS-SEVERIN	1027	100,0	92	9,0	911	88,7	24	2,3
CALARASI	603	100,0	91	15,1	421	69,8	91	15,1
CLUJ	3182	100,0	395	12,4	2617	82,2	170	5,3
CONSTANTA	3899	100,0	354	9,1	3220	82,6	325	8,3
COVASNA	448	100,0	72	16,1	341	76,1	35	7,8
DAMBOVITA	804	100,0	164	20,4	590	73,4	50	6,2
DOLJ	2512	100,0	309	12,3	1967	78,3	236	9,4
GALATI	1737	100,0	230	13,2	1420	81,8	87	5,0
GIURGIU	692	100,0	93	13,4	581	84,0	18	2,6
GORJ	1063	100,0	89	8,4	927	87,2	47	4,4
HARGHITA	1401	100,0	145	10,3	1182	84,4	74	5,3
HUNEDOARA	1222	100,0	231	18,9	915	74,9	76	6,2
IALOMITA	669	100,0	73	10,9	525	78,5	71	10,6
IASI	2714	100,0	358	13,2	2190	80,7	166	6,1
MARAMURES	1374	100,0	203	14,8	1062	77,3	109	7,9
MEHEDINTI	846	100,0	116	13,7	702	83,0	28	3,3
MURES	1806	100,0	196	10,9	1509	83,6	101	5,6
NEAMT	1218	100,0	157	12,9	1003	82,3	58	4,8
OLT	953	100,0	116	12,2	800	83,9	37	3,9
PRAHOVA	2196	100,0	331	15,1	1708	77,8	157	7,1
SALAJ	831	100,0	100	12,0	669	80,5	62	7,5
SATU MARE	1117	100,0	134	12,0	937	83,9	46	4,1
SIBIU	1752	100,0	192	11,0	1476	84,2	84	4,8
SUCEAVA	1653	100,0	185	11,2	1412	85,4	56	3,4
TELEORMAN	606	100,0	102	16,8	478	78,9	26	4,3
TIMIS	2976	100,0	324	10,9	2475	83,2	177	5,9
TULCEA	753	100,0	62	8,2	603	80,1	88	11,7
VASLUI	1003	100,0	107	10,7	866	86,3	30	3,0
VALCEA	1030	100,0	116	11,3	841	81,7	73	7,1
VRANCEA	933	100,0	119	12,8	771	82,6	43	4,6
MUN. BUCURESTI	15325	100,0	1609	10,5	13012	84,9	704	4,6
ILFOV	1972	100,0	334	16,9	1568	79,5	70	3,5

\*) by effect of implementation of Law no. 314/2001, art.1 and art. 6

Table no.7

**Number of incorporations in the trade registers by counties and capital sources in the month of November 2010**

County	Total		out of which:						Rnking by: *
			Private capital			State majority capital		Mixed capital (state+private)	
			out of which:			out of which:		Companies	
			PF	Companies	SC	APJ	RA	Compani es	
No.	%	No.	No.	No.		No.	No.	No.	
0	1	2	3	4	5	6	7	8	9
<b>Total ROMÂNIA</b>	<b>9192</b>	<b>100,0</b>	<b>4439</b>	<b>4752</b>	<b>1</b>				<b>X</b>
ALBA	248	2,7	190	58					10
ARAD	206	2,2	133	73					16
ARGES	217	2,4	108	109					15
BACAU	221	2,4	132	89					14
BIHOR	342	3,7	199	143					5
BISTRITA-NASAUD	151	1,6	101	50					23
BOTOSANI	107	1,2	79	28					32
BRASOV	128	1,4	78	50					27
BRAILA	241	2,6	114	127					11
BUZAU	132	1,4	60	72					26
CARAS-SEVERIN	92	1,0	47	45					37
CALARASI	91	1,0	50	41					38
CLUJ	395	4,3	145	250					2
CONSTANTA	354	3,9	142	212					4
COVASNA	72	0,8	43	29					41
DAMBOVITA	164	1,8	125	39					21
DOLJ	309	3,4	145	164					9
GALATI	230	2,5	109	121					13
GIURGIU	93	1,0	28	65					36
GORJ	89	1,0	51	38					39
HARGHITA	145	1,6	103	42					24
HUNEDOARA	231	2,5	152	79					12
IALOMITA	73	0,8	28	45					40
IASI	358	3,9	211	147					3
MARAMURES	203	2,2	122	81					17
MEHEDINTI	116	1,3	84	32					29
MURES	196	2,1	109	87					18
NEAMT	157	1,7	101	56					22
OLT	116	1,3	55	61					30
PRAHOVA	331	3,6	171	160					7
SALAJ	100	1,1	66	34					35
SATU MARE	134	1,5	83	51					25
SIBIU	192	2,1	109	83					19
SUCEAVA	185	2,0	116	69					20
TELEORMAN	102	1,1	57	45					34
TIMIS	324	3,5	121	203					8
TULCEA	62	0,7	37	25					42
VASLUI	107	1,2	71	36					33
VALCEA	116	1,3	71	45					31
VRANCEA	119	1,3	66	53					28
MUN. BUCURESTI	1609	17,5	361	1247	1				1
ILFOV	334	3,6	66	268					6

\*) The total number of incorporations (col 1)

\*\*\* Less than 0,01%

Table no.8

**Number of incorporations in the trade registers by counties and business categories in the month of November 2010**

County	Total		out of which:							
			PF	companies: 4752				RA	SC	APJ
	SNC	SCS		SRL	SA					
	No.	%	No.	No.	No.	No.	No.	No.	No.	
0	1	2	3	4	5	6	7	8	9	10
<b>Total ROMÂNIA</b>	<b>9192</b>	<b>100,0</b>	<b>4439</b>			<b>4733</b>	<b>19</b>		<b>1</b>	
ALBA	248	2,7	190			58				
ARAD	206	2,2	133			73				
ARGES	217	2,4	108			109				
BACAU	221	2,4	132			88	1			
BIHOR	342	3,7	199			143				
BISTRITA-NASAUD	151	1,6	101			50				
BOTOSANI	107	1,2	79			28				
BRASOV	128	1,4	78			49	1			
BRAILA	241	2,6	114			125	2			
BUZAU	132	1,4	60			72				
CARAS-SEVERIN	92	1,0	47			45				
CALARASI	91	1,0	50			40	1			
CLUJ	395	4,3	145			250				
CONSTANTA	354	3,9	142			211	1			
COVASNA	72	0,8	43			29				
DAMBOVITA	164	1,8	125			39				
DOLJ	309	3,4	145			163	1			
GALATI	230	2,5	109			121				
GIURGIU	93	1,0	28			65				
GORJ	89	1,0	51			38				
HARGHITA	145	1,6	103			42				
HUNEDOARA	231	2,5	152			79				
IALOMITA	73	0,8	28			45				
IASI	358	3,9	211			147				
MARAMURES	203	2,2	122			81				
MEHEDINTI	116	1,3	84			32				
MURES	196	2,1	109			85	2			
NEAMT	157	1,7	101			56				
OLT	116	1,3	55			61				
PRAHOVA	331	3,6	171			159	1			
SALAJ	100	1,1	66			34				
SATU MARE	134	1,5	83			51				
SIBIU	192	2,1	109			83				
SUCEAVA	185	2,0	116			68	1			
TELEORMAN	102	1,1	57			45				
TIMIS	324	3,5	121			203				
TULCEA	62	0,7	37			25				
VASLUI	107	1,2	71			36				
VALCEA	116	1,3	71			44	1			
VRANCEA	119	1,3	66			53				
MUN. BUCURESTI	1609	17,5	361			1242	5		1	
ILFOV	334	3,6	66			266	2			

Table no. 9

**Number of incorporations in the trade registers by domains of activity and business categories in the month of November 2010**

CAEN seg.	Field of activity	Total		out of which:							
				PF	companies: 4752				RA	SC	APJ
		SNC	SCS		SRL	SA					
		No.	%	No.	No.	No.	No.	No.	No.	No.	
0	1	2	3	4	5	6	7	8	9	10	11
	<b>Total ROMÂNIA</b>	<b>9192</b>	<b>100,0</b>	<b>4439</b>			<b>4733</b>	<b>19</b>			<b>1</b>
1	Agriculture, hunting and related service activities	819	8,9	754			65				
2	Forestry and logging	51	0,6	10			41				
3	Fishing and aquaculture	41	0,4	26			15				
5	Mining of hard and brown coal										
6	Extraction of crude petroleum and natural gas	2	0,0				2				
7	Mining of metal ores										
8	Other mining and quarrying	12	0,1				12				
9	Mining support service activities	2	0,0	1			1				
10	Manufacture of food products	108	1,2	46			61	1			
11	Manufacture of beverages	23	0,3	22			1				
12	Manufacture of tobacco products										
13	Manufacture of textiles	11	0,1	6			5				
14	Manufacture of wearing apparel	60	0,7	26			34				
15	Tanning and dressing of leather; manufacture of luggage, handbags, saddlery, harness and footwear; dressing and dyeing of fur	16	0,2	4			12				
16	Manufacture of wood and of products of wood and cork, except furniture; manufacture of articles of straw and plaiting materials	52	0,6	24			28				
17	Manufacture of paper and paper products	5	0,1	2			3				
18	Printing and reproduction of recorded media	17	0,2	7			10				
19	Manufacture of coke and refined petroleum products										
20	Manufacture of chemicals and chemical products	8	0,1				8				
21	Manufacture of basic pharmaceutical products and pharmaceutical preparations	4	0,0				3	1			
22	Manufacture of rubber and plastic products	22	0,2	3			19				
23	Manufacture of other non-metallic mineral products	12	0,1	3			9				
24	Manufacture of basic metals	1	0,0	1							
25	Manufacture of fabricated metal products, except machinery and equipment	56	0,6	36			19	1			
26	Manufacture of computer, electronic and optical products	1	0,0				1				
27	Manufacture of electrical equipment	2	0,0				2				
28	Manufacture of machinery and equipment n.e.c.	5	0,1	1			4				
29	Manufacture of motor vehicles, trailers and semi-trailers	4	0,0				4				
30	Manufacture of other transport equipment	7	0,1				6	1			
31	Manufacture of furniture	30	0,3	16			14				
32	Other manufacturing	36	0,4	23			13				
33	Repair and installation of machinery and equipment	28	0,3	9			19				
35	Electricity, gas, steam and air conditioning supply	53	0,6	1			52				
36	Water collection, treatment and supply	7	0,1				6	1			
37	Sewerage	3	0,0	1			2				
38	Waste collection, treatment and disposal activities; materials recovery	46	0,5	4			41	1			
39	Remediation activities and other waste management services										
41	Construction of buildings	279	3,0	24			253	1			1
42	Civil engineering	28	0,3	4			24				
43	Specialised construction activities	239	2,6	122			117				
45	Wholesale and retail trade and repair of motor vehicles and motorcycles	209	2,3	64			145				
46	Wholesale trade, except of motor vehicles and motorcycles	938	10,2	196			741	1			
47	Retail trade, except of motor vehicles and motorcycles	2173	23,6	1188			984	1			
49	Land transport and transport via pipelines	509	5,5	188			321				
50	Water transport	2	0,0	1			1				



Table no. 10

**Number of incorporated trading companies and the value of the subscribed share capital, by counties, in the month of November 2010**

County	Total registered companies		Subscribed capital		Average subscribed capital on company
	No.	%	thousand Lei	%	thousand Lei
0	1	2	3	4	5
<b>Total ROMÂNIA</b>	<b>4752</b>	<b>100,0</b>	<b>271743,4</b>	<b>100,0</b>	<b>57,4</b>
ALBA	58	1,2	9924,5	3,7	171,1
ARAD	73	1,5	1624,4	0,6	22,3
ARGES	109	2,3	1357,2	0,5	12,5
BACAU	89	1,9	154,6	0,1	1,8
BIHOR	143	3,0	963,3	0,4	6,7
BISTRITA-NASAUD	50	1,1	24,6	***	0,5
BOTOSANI	28	0,6	142,5	0,1	5,1
BRASOV	50	1,1	303,3	0,1	6,1
BRAILA	127	2,7	427,2	0,2	3,4
BUZAU	72	1,5	36,7	0,0	0,5
CARAS-SEVERIN	45	0,9	32,5	0,0	0,7
CALARASI	41	0,9	290,7	0,1	7,3
CLUJ	250	5,3	624,4	0,2	2,5
CONSTANTA	212	4,5	513,4	0,2	2,4
COVASNA	29	0,6	345,9	0,1	11,9
DAMBOVITA	39	0,8	24,6	***	0,6
DOLJ	164	3,5	3102,3	1,1	18,9
GALATI	121	2,5	47,1	0,0	0,4
GIURGIU	65	1,4	245,3	0,1	3,8
GORJ	38	0,8	58,0	0,0	1,5
HARGHITA	42	0,9	34,9	0,0	0,8
HUNEDOARA	79	1,7	28,1	0,0	0,4
IALOMITA	45	0,9	715,9	0,3	15,9
IASI	147	3,1	532,6	0,2	3,6
MARAMURES	81	1,7	1154,1	0,4	14,2
MEHEDINTI	32	0,7	6,4	***	0,2
MURES	87	1,8	22537,9	8,3	268,3
NEAMT	56	1,2	22,7	***	0,4
OLT	61	1,3	727,9	0,3	11,9
PRAHOVA	160	3,4	2033,6	0,7	12,7
SALAJ	34	0,7	9,6	***	0,3
SATU MARE	51	1,1	25,5	***	0,5
SIBIU	83	1,7	125,5	0,0	1,5
SUCEAVA	69	1,5	757,6	0,3	11,0
TELEORMAN	45	0,9	2109,9	0,8	46,9
TIMIS	203	4,3	2014,7	0,7	9,9
TULCEA	25	0,5	5,8	***	0,2
VASLUI	36	0,8	206,0	0,1	5,7
VALCEA	45	0,9	153,4	0,1	3,5
VRANCEA	53	1,1	56,2	0,0	1,1
MUN. BUCURESTI	1247	26,2	99135,2	36,5	79,8
ILFOV	268	5,6	119107,6	43,8	444,4

Note: The average does not include filials because according to the Law no.31/1990 they are not juridical persons

\*\*\* Less than 0,01%

Table no. 11

**Number of incorporated trading companies and the value of the subscribed share capital by legal forms, in the month of November 2010**

Company type	Total registered companies		Subscribed capital		Average subscribed capital on company
	No.	%	thousand Lei	%	thousand Lei
0	1	2	3	4	5
<b>Total ROMÂNIA</b>	<b>4752</b>	<b>100,0</b>	<b>271743,4</b>	<b>100,0</b>	<b>57,4</b>
SNC					
SCS					
SA	19	0,4	26653,6	9,8	3331,7
SRL	4733	99,6	245089,9	90,2	51,8

**Note:** The average does not include filials because according to the Law no.31/1990 they are not juridical persons

\*\*\* Less than 0,01%

Diagram no.5

