



MINISTRY OF JUSTICE

THE NATIONAL TRADE REGISTER OFFICE

București, Bd. Unirii nr. 74, Bl. J3b, tronson II+III, sector 3; Telefon: +40 21 316.08.04, 316.08.10; Fax: +40 21 316.08.03; Cod poștal: 030837
Website: www.onrc.ro; E-mail: onrc@onrc.ro; Cod identificare Fiscală: 14942091

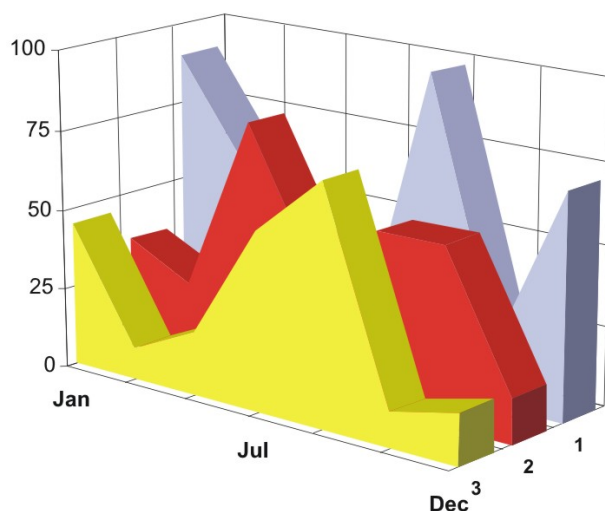
OPERATIONS IN THE CENTRAL TRADE REGISTER

STATISTIC SYNTHESIS

OF

RECORDS IN THE CENTRAL TRADE REGISTER

- 31th October 2010 - provisional data -



- ISSUE No. 227 -

**MINISTRY OF JUSTICE
THE NATIONAL TRADE REGISTER OFFICE**

- Operations such as incorporation of trading companies, submission of changes, and strike-off are carried out based on Law No.26/1990, as republished, Law No.31/1990, as republished and on the Methodological Norms no. P/608/1998.

- This work reflects the evolution of the operations with the Trade Register Office attached to Bucharest Law Court and the Trade Register Offices attached to County Law Courts.

- The data contained in the Central Trade Register refer to operations for which law sets out the obligation of being registered in the trade registers kept by the 42 trade register offices attached to law courts.

• The content of this publication shall not be reproduced, partly or entirely, in original or modified form, and shall not be stored in a recovery system and shall not be transmitted in any form or by any means without prior written authorization of the Ministry of Justice – The National Trade Register Office.

• The content of this publication shall not be used in articles, studies, books, as supporting or explanatory data only by clearly and accurately indicating the source.

CONTENTS

Page

1 Definitions	1
2.1 Data related to the period December 1990 – October 2010	3
Table no. 1 – Operations performed in the trade registers by categories of registration during December 1990 – October 2010, total by country and by counties, shares of counties in the total by country	3
Table no. 2 – Operations performed in the trade registers by categories of registration during 1990 – October 2010, total by country and counties, share of categories of operations in the total of each county	4
Table no. 3 – Number and structure of incorporations in the trade registers during 1990-October 2010	5
Chart no. 1 – Structure by years of incorporations in the trade register	
Table no. 4 – Number of incorporations in the trade registers by counties and capital sources during 1990 - October 2010	6
Table no. 5 – Number of incorporations in the trade registers by counties and business categories during 1990 –October 2010	7
2.2 Data related to October 2010	8
Table no. 6 – Operations performed in the trade registers by counties and categories of registrations in the month of October 2010	8
Table no. 7 – Number of incorporations in the trade registers by counties and capital sources in the month of October 2010	9
Table no. 8 – Number of incorporations in the trade registers by counties and business categories in the month of October 2010	10
Table no. 9 –Number of incorporations in the trade registers by domains of activity and business categories in the month of October 2010	11-12
Table no. 10 – Number of incorporated trading companies and the value of subscribed share capital, by counties, in the month of October 2010	13
Table no. 11– Number of incorporated trading companies and the value of subscribed share capital by legal forms, in the month of October 2010	14
Chart no. 5 – Average value of subscribed share capital by types of trading companies in the month of October 2010	14

Definitions

The Trade Register Office was established based on Law No. 26/1990, as republished and subsequently amended and supplemented, operates as an active institution since 1990 and is twofold structured:

- at national level, represented by the National Trade Register Office organized under the authority of the Ministry of Justice
- at local level, represented by the 42 Trade Register Offices attached to Law Courts, organized under the subordination of the National Trade Register Office

Categories of persons liable to registration in the trade register:

- natural persons: authorized natural persons, individual enterprises and family enterprises currently carrying on trading activities;
- legal persons represented by: Trading Companies, National Societies and Companies, National R&D Institutes, Autonomous Administrations, Co-operative Societies, Agricultural Co-operatives, Co-operative Organizations, Economic Interest Groupings, European Economic Interest Groupings, European Societies, European Co-operative Societies, branches of trading companies with legal establishment, operation and incorporation regime of trading company legal form under which they were incorporated.

• Terms used in tables and charts

➤ **Number of companies**, depending on the table, represents the number of trading companies incorporated during the reference period, the number of trading companies struck-off from the trade register. The following forms of organization are included: limited liability companies, joint-stock companies, limited partnerships by share, limited partnerships, general partnerships, and branches thereof.

➤ **Value of subscribed share capital:**

- **total, expressed in national currency:** the share capital value resulted by adding up the subscribed values (in cash and in kind) in national currency (lei)

➤ **Regions of economic development:**

<i>North-East:</i>	Suceava, Botoșani, Neamț, Iași, Bacău, Vaslui.
<i>South-East:</i>	Vrancea, Galați, Buzău, Brăila, Tulcea, Constanța.
<i>South-Muntenia:</i>	Argeș, Dâmbovița, Prahova, Teleorman, Giurgiu, Călărași, Ialomița.
<i>South-West Oltenia:</i>	Gorj, Vâlcea, Dolj, Mehedinți, Olt.
<i>West:</i>	Arad, Caraș-Severin, Hunedoara, Timiș.
<i>North-West:</i>	Bihor, Bistrița, Cluj, Satu Mare, Sălaj, Maramureș.
<i>Center:</i>	Alba, Brașov, Covasna, Harghita, Mureș, Sibiu.
<i>Bucharest-Ilfov:</i>	București, Ilfov.

NACE Code – The classification of economic activities in the national economy was approved by GO No. 656/1997, amended by Order No 601/2002 and Order no. 337/2007 of the President of the

National Institute of Statistics, and complies with the international classification used in statistic reports and official documents. The activities are ranked by the harmonization principle, by sections, divisions, groups and classes.

Abbreviations

- **PF** - Natural Person; the following forms of organization are included in this category: natural persons and family associations registered until 25.04.2008, authorized natural persons, individual enterprises and family enterprises.
- **SNC** - General Partnership
- **SCS** - Limited Partnership
- **SCA** - Limited Partnership by Share
- **SA** - Joint-Stock Company
- **SRL** - Limited Liability Company
- **RA** - Autonomous Administration
- **APJ** - Other legal persons having the obligation to register in the trade register: National R&D Institutes, Economic Interest Groupings, European Economic Interest Groupings, European Societies, European Co-operative Societies, Agricultural Co-operatives, Co-operative Organizations.

Sources of Information:

The integrated IT system of the trade register is designed by The National Trade Register Office in compliance with the provisions of the related legislation in force. The source of information consists of the trade registers organized in computerized system, kept by the trade register offices attached to law courts.

Table no. 1

Operations performed in the trade registers by categories of registration during December 1990 – October 2010, total by country and by counties, share of counties in the total by country

Counties	Total of registered operations		out of which :					
			Registered companies		Changes in statutory documents		Strike off companies	
	No.	%	No.	%	No.	%	No.	%
0	1	2	3	4	7	8	11	12
Total ROMÂNIA	14419343	100,0	2068546	100,0	11551052	100,0	799745	100,0
ALBA	218464	1,5	34609	1,7	172390	1,5	11465	1,4
ARAD	340191	2,4	50257	2,4	269928	2,3	20006	2,5
ARGES	349073	2,4	52968	2,6	280138	2,4	15967	2,0
BACAU	335317	2,3	51576	2,5	261650	2,3	22091	2,8
BIHOR	437730	3,0	64167	3,1	351896	3,0	21667	2,7
BISTRITA-NASAUD	174619	1,2	26804	1,3	137567	1,2	10248	1,3
BOTOSANI	135360	0,9	25418	1,2	99139	0,9	10803	1,4
BRASOV	563252	3,9	64102	3,1	477508	4,1	21642	2,7
BRAILA	221107	1,5	28792	1,4	183963	1,6	8352	1,0
BUZAU	249826	1,7	37268	1,8	196558	1,7	16000	2,0
CARAS-SEVERIN	167529	1,2	25037	1,2	130683	1,1	11809	1,5
CALARASI	132156	0,9	20854	1,0	102503	0,9	8799	1,1
CLUJ	638238	4,4	95079	4,6	512796	4,4	30363	3,8
CONSTANTA	614549	4,3	85126	4,1	493881	4,3	35542	4,4
COVASNA	124438	0,9	17693	0,9	99849	0,9	6896	0,9
DAMBOVITA	208219	1,4	38737	1,9	150786	1,3	18696	2,3
DOLJ	386662	2,7	54418	2,6	311073	2,7	21171	2,6
GALATI	366317	2,5	49096	2,4	297031	2,6	20190	2,5
GIURGIU	113694	0,8	17368	0,8	89009	0,8	7317	0,9
GORJ	220412	1,5	24458	1,2	186252	1,6	9702	1,2
HARGHITA	216316	1,5	32455	1,6	173346	1,5	10515	1,3
HUNEDOARA	289988	2,0	42197	2,0	230113	2,0	17678	2,2
IALOMITA	133419	0,9	19208	0,9	104633	0,9	9578	1,2
IASI	476458	3,3	68660	3,3	384592	3,3	23206	2,9
MARAMURES	307311	2,1	52234	2,5	232052	2,0	23025	2,9
MEHEDINTI	146510	1,0	23167	1,1	112904	1,0	10439	1,3
MURES	399478	2,8	51557	2,5	327113	2,8	20808	2,6
NEAMT	307270	2,1	43955	2,1	243374	2,1	19941	2,5
OLT	172625	1,2	28612	1,4	131548	1,1	12465	1,6
PRAHOVA	488045	3,4	68891	3,3	392230	3,4	26924	3,4
SALAJ	128146	0,9	20866	1,0	98948	0,9	8332	1,0
SATU MARE	224706	1,6	35254	1,7	174630	1,5	14822	1,9
SIBIU	314048	2,2	40691	2,0	258657	2,2	14700	1,8
SUCEAVA	341489	2,4	51186	2,5	265494	2,3	24809	3,1
TELEORMAN	154675	1,1	23969	1,2	121697	1,1	9009	1,1
TIMIS	480677	3,3	73115	3,5	383038	3,3	24524	3,1
TULCEA	170625	1,2	21049	1,0	140384	1,2	9192	1,1
VASLUI	179942	1,2	25646	1,2	141750	1,2	12546	1,6
VALCEA	221127	1,5	33346	1,6	172492	1,5	15289	1,9
VRANCEA	176667	1,2	25590	1,2	143246	1,2	7831	1,0
MUN. BUCURESTI	2858877	19,8	382741	18,5	2331053	20,2	145083	18,1
ILFOV	233790	1,6	40329	1,9	183158	1,6	10303	1,3

Table no. 2

**Operations performed in the trade registers during December 1990 –
October 2010, total by country and counties, share of categories of
operations in the total of each county**

Counties	Total of registered operations		out of which :					
			Registered companies		Changes in statutory documents		Strike off companies	
	No.	%	No.	%	No.	%	No.	%
0	1	2	3	4	7	8	11	12
Total ROMÂNIA	14419343	100,0	2068546	14,3	11551052	80,1	799745	5,5
ALBA	218464	100,0	34609	15,8	172390	78,9	11465	5,2
ARAD	340191	100,0	50257	14,8	269928	79,3	20006	5,9
ARGES	349073	100,0	52968	15,2	280138	80,3	15967	4,6
BACAU	335317	100,0	51576	15,4	261650	78,0	22091	6,6
BIHOR	437730	100,0	64167	14,7	351896	80,4	21667	4,9
BISTRITA-NASAUD	174619	100,0	26804	15,3	137567	78,8	10248	5,9
BOTOSANI	135360	100,0	25418	18,8	99139	73,2	10803	8,0
BRASOV	563252	100,0	64102	11,4	477508	84,8	21642	3,8
BRAILA	221107	100,0	28792	13,0	183963	83,2	8352	3,8
BUZAU	249826	100,0	37268	14,9	196558	78,7	16000	6,4
CARAS-SEVERIN	167529	100,0	25037	14,9	130683	78,0	11809	7,0
CALARASI	132156	100,0	20854	15,8	102503	77,6	8799	6,7
CLUJ	638238	100,0	95079	14,9	512796	80,3	30363	4,8
CONSTANTA	614549	100,0	85126	13,9	493881	80,4	35542	5,8
COVASNA	124438	100,0	17693	14,2	99849	80,2	6896	5,5
DAMBOVITA	208219	100,0	38737	18,6	150786	72,4	18696	9,0
DOLJ	386662	100,0	54418	14,1	311073	80,5	21171	5,5
GALATI	366317	100,0	49096	13,4	297031	81,1	20190	5,5
GIURGIU	113694	100,0	17368	15,3	89009	78,3	7317	6,4
GORJ	220412	100,0	24458	11,1	186252	84,5	9702	4,4
HARGHITA	216316	100,0	32455	15,0	173346	80,1	10515	4,9
HUNEDOARA	289988	100,0	42197	14,6	230113	79,4	17678	6,1
IALOMITA	133419	100,0	19208	14,4	104633	78,4	9578	7,2
IASI	476458	100,0	68660	14,4	384592	80,7	23206	4,9
MARAMURES	307311	100,0	52234	17,0	232052	75,5	23025	7,5
MEHEDINTI	146510	100,0	23167	15,8	112904	77,1	10439	7,1
MURES	399478	100,0	51557	12,9	327113	81,9	20808	5,2
NEAMT	307270	100,0	43955	14,3	243374	79,2	19941	6,5
OLT	172625	100,0	28612	16,6	131548	76,2	12465	7,2
PRAHOVA	488045	100,0	68891	14,1	392230	80,4	26924	5,5
SALAJ	128146	100,0	20866	16,3	98948	77,2	8332	6,5
SATU MARE	224706	100,0	35254	15,7	174630	77,7	14822	6,6
SIBIU	314048	100,0	40691	13,0	258657	82,4	14700	4,7
SUCEAVA	341489	100,0	51186	15,0	265494	77,7	24809	7,3
TELEORMAN	154675	100,0	23969	15,5	121697	78,7	9009	5,8
TIMIS	480677	100,0	73115	15,2	383038	79,7	24524	5,1
TULCEA	170625	100,0	21049	12,3	140384	82,3	9192	5,4
VASLUI	179942	100,0	25646	14,3	141750	78,8	12546	7,0
VALCEA	221127	100,0	33346	15,1	172492	78,0	15289	6,9
VRANCEA	176667	100,0	25590	14,5	143246	81,1	7831	4,4
MUN. BUCURESTI	2858877	100,0	382741	13,4	2331053	81,5	145083	5,1
ILFOV	233790	100,0	40329	17,3	183158	78,3	10303	4,4

Table no.3

Number and structure of incorporations in the trade registers during December 1990 - October 2010

Period (year, month)	Registered companies		Percentage	
	No.	%	%	
0	1	2	3	
Total, 31 October 2010, out of which	2068546	100,00		
Year 1990	81	0,00		
Year 1991	95840	4,63		
Year 1992	137456	6,65		
Year 1993	117078	5,66		
Year 1994	137445	6,64		
Year 1995	65479	3,17		
Year 1996	62089	3,00		
Year 1997	55663	2,69		
Year 1998	63873	3,09		
Year 1999	57197	2,77		
Year 2000	57268	2,77		
Year 2001	61265	2,96		
Year 2002	84780	4,10		
Year 2003	123582	5,97		
Year 2004	144284	6,98		
Year 2005	159464	7,71		
Year 2006	135371	6,54		
Year 2007	144728	7,00		
Year 2008	144173	6,97		
Year 2009	116037	5,61		
Year 2010 (I - XII) out of which :	105399		100,0	
January	7739	7,3		
February	9623	9,1		
March	11893	11,3		
April	10273	9,7		
May	11306	10,7		
June	10197	9,7		
July	8934	8,5		
August	8283	7,9		
September	9129	8,7		
October	18022	17,1		

Note: Column 2 reveals the annual structure of incorporations; column 3 reveals the structure by months during the current year.

Diagram no.1

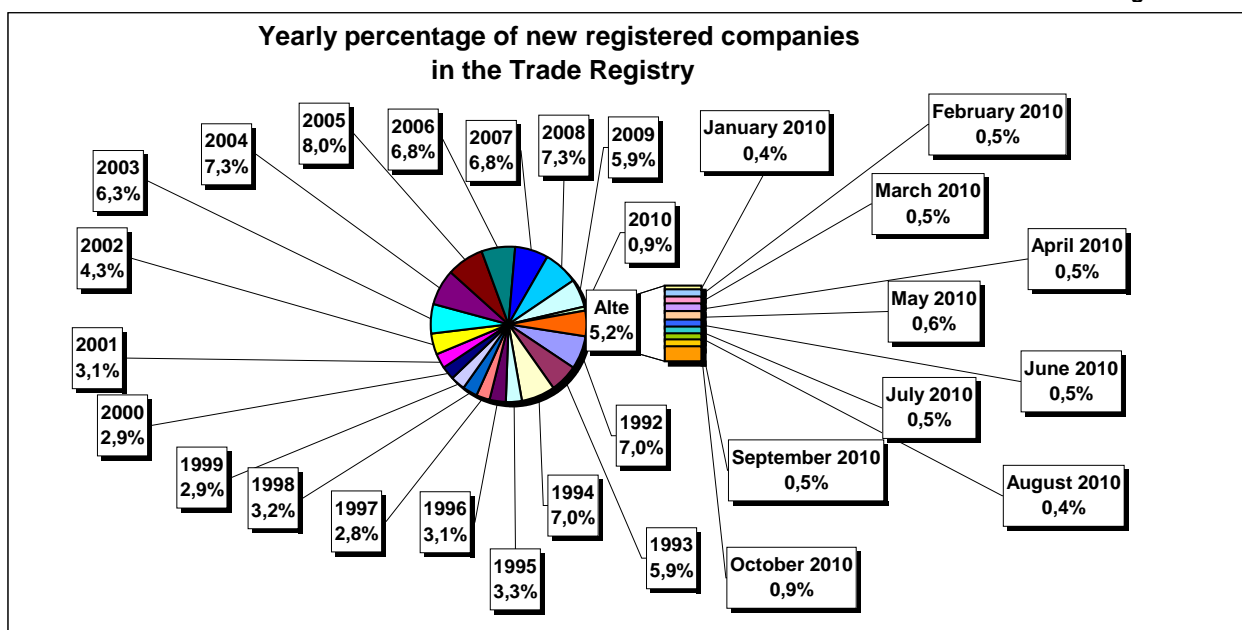


Table no. 4

**Number of incorporations in the trade registers by counties and capital sources during
December 1990 - October 2010**

Counties	Total		out of which:							Ranking by: *
			Private capital				State majority capital		Mixed capital (state+private)	
			out of which:				out of which:		Companies	
			PF	Companies	SC	APJ	RA	Companies	Companies	
No.	%	No.	No.	No.	No.	No.	No.	No.		
0	1	2	3	4	5	6	6	7	8	9
Total ROMÂNIA	2068546	100,0	604099	1444221	2043	5708	1393	2416	8673	X
ALBA	34609	1,7	13995	20175	36	148	38	47	170	24
ARAD	50257	2,4	19948	29671	60	170	30	43	336	15
ARGES	52968	2,6	18153	34376	48	175	31	32	153	10
BACAU	51576	2,5	18710	32249	151	161	35	45	226	12
BIHOR	64167	3,1	18598	44943	63	152	40	62	309	7
BISTRITA-NASAUD	26804	1,3	11063	15430	46	99	28	29	109	29
BOTOSANI	25418	1,2	12434	12449	40	179	21	176	119	32
BRASOV	64094	3,1	15858	47745	58	125	49	87	172	8
BRAILA	28800	1,4	8883	19532	42	100	30	46	167	27
BUZAU	37268	1,8	11975	24893	46	153	28	42	131	22
CARAS-SEVERIN	25037	1,2	9195	15450	42	108	39	65	138	33
CALARASI	20854	1,0	6921	13625	22	91	18	77	100	39
CLUJ	95079	4,6	26991	67510	62	158	52	42	264	2
CONSTANTA	85126	4,1	18520	65660	91	210	51	51	543	3
COVASNA	17693	0,9	6996	10421	41	70	24	32	109	41
DAMBOVITA	38737	1,9	18389	19915	32	140	30	75	156	21
DOLJ	54418	2,6	13433	40475	39	169	40	58	204	9
GALATI	49096	2,4	12435	36262	35	140	30	51	143	16
GIURGIU	17369	0,8	4474	12552	15	84	23	110	111	42
GORJ	24457	1,2	6976	17037	26	184	51	83	100	34
HARGHITA	32455	1,6	14732	17268	64	92	24	43	232	26
HUNEDOARA	42197	2,0	12629	29027	33	84	42	95	287	18
IALOMITA	19208	0,9	7628	11318	27	83	15	46	91	40
IASI	68660	3,3	22971	44980	87	169	34	77	344	6
MARAMURES	52234	2,5	22122	29739	43	128	38	41	124	11
MEHEDINTI	23167	1,1	8611	14304	19	88	19	27	99	36
MURES	51557	2,5	20559	30538	68	159	30	34	169	13
NEAMT	43955	2,1	17035	26463	66	165	30	30	166	17
OLT	28612	1,4	11511	16695	27	166	26	64	123	28
PRAHOVA	68891	3,3	23227	45015	67	184	52	74	272	5
SALAJ	20866	1,0	8929	11675	41	110	19	28	64	38
SATU MARE	35254	1,7	12824	22095	41	98	21	42	134	23
SIBIU	40691	2,0	12076	28152	37	121	34	110	161	19
SUCEAVA	51186	2,5	24935	25650	73	209	31	67	221	14
TELEORMAN	23969	1,2	9053	14469	33	163	21	46	184	35
TIMIS	73115	3,5	14245	58188	69	155	38	69	351	4
TULCEA	21049	1,0	8027	12646	36	67	19	42	212	37
VASLUI	25646	1,2	12808	12510	22	113	16	41	136	30
VALCEA	33346	1,6	14090	18824	64	171	42	40	115	25
VRANCEA	25590	1,2	8847	16434	35	115	17	28	114	31
MUN. BUCURESTI	382741	18,5	37465	343696	64	154	116	106	1141	1
ILFOV	40329	1,9	5828	34165	31	98	21	13	173	20

*) The total number of incorporations (col 1)

Table no. 5

**Number of incorporations in the trade registers by counties and business categories
during December 1990 – October 2010**

County	Total		out of which:							
			PF	companies: 1455310				RA	SC	APJ
	SNC	SCS		SRL	SA					
	No.	%	No.	No.	No.	No.	No.	No.	No.	
0	1	2	3	4	5	6	7	8	9	10
Total ROMÂNIA	2068546	100,0	604099	32680	1619	1387086	33918	1393	2043	5708
ALBA	34609	1,7	13995	890	11	18916	575	38	36	148
ARAD	50257	2,4	19948	54	13	29275	707	30	60	170
ARGES	52968	2,6	18153	107	15	33595	844	31	48	175
BACAU	51576	2,5	18710	1299	4	30464	752	35	151	161
BIHOR	64167	3,1	18598	127	48	44205	934	40	63	152
BISTRITA-NASAUD	26804	1,3	11063	146	22	14977	423	28	46	99
BOTOSANI	25418	1,2	12434	468	1	11814	461	21	40	179
BRASOV	64102	3,1	15858	239	21	46859	893	49	58	125
BRAILA	28792	1,4	8883	376	12	18811	538	30	42	100
BUZAU	37268	1,8	11975	3747	46	20678	595	28	46	153
CARAS-SEVERIN	25037	1,2	9195	118	9	15051	475	39	42	108
CALARASI	20854	1,0	6921	609	3	12828	362	18	22	91
CLUJ	95079	4,6	26991	2112	21	64326	1357	52	62	158
CONSTANTA	85126	4,1	18520	311	23	64394	1526	51	91	210
COVASNA	17693	0,9	6996	148	4	10098	312	24	41	70
DAMBOVITA	38737	1,9	18389	60	8	19572	506	30	32	140
DOLJ	54418	2,6	13433	1560	8	38252	917	40	39	169
GALATI	49096	2,4	12435	1574	6	34009	867	30	35	140
GIURGIU	17368	0,8	4474	35	8	12395	334	23	15	84
GORJ	24458	1,2	6976	29	1	16683	508	51	26	184
HARGHITA	32455	1,6	14732	62	7	16971	503	24	64	92
HUNEDOARA	42197	2,0	12629	1166	98	27448	697	42	33	84
IALOMITA	19208	0,9	7628	269	12	10819	355	15	27	83
IASI	68660	3,3	22971	508	111	43736	1044	34	87	169
MARAMURES	52234	2,5	22122	1927	23	27342	611	38	43	128
MEHEDINTI	23167	1,1	8611	427	3	13656	344	19	19	88
MURES	51557	2,5	20559	37	34	29985	685	30	68	159
NEAMT	43955	2,1	17035	3293	30	22649	687	30	66	165
OLT	28612	1,4	11511	1611	1	14765	505	26	27	166
PRAHOVA	68891	3,3	23227	3122	15	41286	938	52	67	184
SALAJ	20866	1,0	8929	600	4	10862	301	19	41	110
SATU MARE	35254	1,7	12824	283	9	21496	482	21	41	98
SIBIU	40691	2,0	12076	778	49	26914	682	34	37	121
SUCEAVA	51186	2,5	24935	438	8	24890	602	31	73	209
TELEORMAN	23969	1,2	9053	272	399	13591	437	21	33	163
TIMIS	73115	3,5	14245	616	34	56665	1293	38	69	155
TULCEA	21049	1,0	8027	1363	114	10938	485	19	36	67
VASLUI	25646	1,2	12808	90	13	12158	426	16	22	113
VALCEA	33346	1,6	14090	364	6	18101	508	42	64	171
VRANCEA	25590	1,2	8847	356	10	15743	467	17	35	115
MUN. BUCURESTI	382741	18,5	37465	1039	321	336291	7291	116	64	154
ILFOV	40329	1,9	5828	50	34	33578	689	21	31	98

Table no. 6

Operations performed in the trade registers by counties and categories of registration in the month of October 2010

County	Total of operations carried on		out of which:					
			New incorporations		Changes in statutory documents		Strike off companies	
	No.	%	No.	%	No.	%	No.	%
0	1	2	3	4	5	6	9	10
Total ROMÂNIA	78223	100,0	18022	23,0	55645	71,1	4556	5,8
ALBA	1863	100,0	1315	70,6	512	27,5	36	1,9
ARAD	1680	100,0	310	18,5	1258	74,9	112	6,7
ARGES	1947	100,0	589	30,3	1248	64,1	110	5,6
BACAU	2107	100,0	445	21,1	1553	73,7	109	5,2
BIHOR	2071	100,0	499	24,1	1413	68,2	159	7,7
BISTRITA-NASAUD	2047	100,0	1214	59,3	805	39,3	28	1,4
BOTOSANI	841	100,0	325	38,6	479	57,0	37	4,4
BRASOV	2191	100,0	305	13,9	1748	79,8	138	6,3
BRAILA	875	100,0	162	18,5	633	72,3	80	9,1
BUZAU	1181	100,0	306	25,9	792	67,1	83	7,0
CARAS-SEVERIN	842	100,0	333	39,5	449	53,3	60	7,1
CALARASI	654	100,0	119	18,2	454	69,4	81	12,4
CLUJ	4453	100,0	728	16,3	3475	78,0	250	5,6
CONSTANTA	3787	100,0	406	10,7	3177	83,9	204	5,4
COVASNA	422	100,0	94	22,3	307	72,7	21	5,0
DAMBOVITA	1223	100,0	557	45,5	601	49,1	65	5,3
DOLJ	2972	100,0	446	15,0	2178	73,3	348	11,7
GALATI	1787	100,0	379	21,2	1298	72,6	110	6,2
GIURGIU	548	100,0	169	30,8	363	66,2	16	2,9
GORJ	1160	100,0	255	22,0	882	76,0	23	2,0
HARGHITA	1657	100,0	459	27,7	1133	68,4	65	3,9
HUNEDOARA	1606	100,0	592	36,9	942	58,7	72	4,5
IALOMITA	644	100,0	84	13,0	479	74,4	81	12,6
IASI	2449	100,0	451	18,4	1843	75,3	155	6,3
MARAMURES	2002	100,0	551	27,5	1391	69,5	60	3,0
MEHEDINTI	756	100,0	323	42,7	402	53,2	31	4,1
MURES	1793	100,0	393	21,9	1281	71,4	119	6,6
NEAMT	1136	100,0	240	21,1	842	74,1	54	4,8
OLT	735	100,0	336	45,7	374	50,9	25	3,4
PRAHOVA	2034	100,0	316	15,5	1527	75,1	191	9,4
SALAJ	1217	100,0	367	30,2	777	63,8	73	6,0
SATU MARE	1545	100,0	413	26,7	1078	69,8	54	3,5
SIBIU	1437	100,0	264	18,4	1090	75,9	83	5,8
SUCEAVA	1675	100,0	532	31,8	1064	63,5	79	4,7
TELEORMAN	1020	100,0	384	37,6	520	51,0	116	11,4
TIMIS	2595	100,0	349	13,4	2009	77,4	237	9,1
TULCEA	777	100,0	129	16,6	602	77,5	46	5,9
VASLUI	877	100,0	185	21,1	675	77,0	17	1,9
VALCEA	1102	100,0	327	29,7	720	65,3	55	5,0
VRANCEA	1301	100,0	617	47,4	642	49,3	42	3,2
MUN. BUCURESTI	13561	100,0	1390	10,2	11414	84,2	757	5,6
ILFOV	1653	100,0	364	22,0	1215	73,5	74	4,5

*) by effect of implementation of Law no. 314/2001, art.1 and art. 6

Table no.7

Number of incorporations in the trade registers by counties and capital sources in the month of October 2010

County	Total		out of which:						Ranking by: *	
			Private capital				State majority capital			Mixed capital (state+private)
			out of which:				out of which:			
			PF	Companies	SC	APJ	RA	Companies		Companies
No.	%	No.	No.	No.		No.	No.	No.		
0	1	2	3	4	5	6	7	8	9	
Total ROMÂNIA	18022	100,0	13619	4396	4	1	2	2	X	
ALBA	1315	7,3	1255	60					2	
ARAD	310	1,7	219	91					30	
ARGES	589	3,3	473	114			2	2	7	
BACAU	445	2,5	360	85					15	
BIHOR	499	2,8	341	158					11	
BISTRITA-NASAUD	1214	6,7	1178	36					3	
BOTOSANI	325	1,8	294	31					27	
BRASOV	305	1,7	177	128					32	
BRAILA	162	0,9	115	47					38	
BUZAU	306	1,7	242	64					31	
CARAS-SEVERIN	333	1,8	283	50					25	
CALARASI	119	0,7	87	32					40	
CLUJ	728	4,0	515	213					4	
CONSTANTA	406	2,3	194	208	4				17	
COVASNA	94	0,5	69	25					41	
DAMBOVITA	557	3,1	503	53		1			8	
DOLJ	446	2,5	317	129					14	
GALATI	379	2,1	285	94					20	
GIURGIU	169	0,9	124	45					37	
GORJ	255	1,4	223	32					34	
HARGHITA	459	2,5	412	47					12	
HUNEDOARA	592	3,3	526	66					6	
IALOMITA	84	0,5	62	22					42	
IASI	451	2,5	289	162					13	
MARAMURES	551	3,1	486	65					9	
MEHEDINTI	323	1,8	292	31					28	
MURES	393	2,2	323	70					18	
NEAMT	240	1,3	179	61					35	
OLT	336	1,9	288	48					24	
PRAHOVA	316	1,8	177	139					29	
SALAJ	367	2,0	343	24					21	
SATU MARE	413	2,3	355	58					16	
SIBIU	264	1,5	183	81					33	
SUCEAVA	532	3,0	463	69					10	
TELEORMAN	384	2,1	325	59					19	
TIMIS	349	1,9	172	177					23	
TULCEA	129	0,7	106	23					39	
VASLUI	185	1,0	160	25					36	
VALCEA	327	1,8	286	41					26	
VRANCEA	617	3,4	577	40					5	
MUN. BUCURESTI	1390	7,7	278	1112					1	
ILFOV	364	2,0	83	281					22	

*) The total number of incorporations (col 1)

*** Less than 0,01%

Table no.8

**Number of incorporations in the trade registers by counties and
business categories in the month of October 2010**

County	Total		out of which:							
			PF	companies: 4396				RA	SC	APJ
				SNC	SCS	SRL	SA			
				No.	No.	No.	No.			
0	1	2	3	4	5	6	7	8	9	
Total ROMÂNIA	18022	100,0	13619		1	4366	29	2	4	1
ALBA	1315	7,3	1255			60				
ARAD	310	1,7	219			91				
ARGES	589	3,3	473			114		2		
BACAU	445	2,5	360			85				
BIHOR	499	2,8	341			156	2			
BISTRITA-NASAUD	1214	6,7	1178			36				
BOTOSANI	325	1,8	294			31				
BRASOV	305	1,7	177			128				
BRAILA	162	0,9	115			47				
BUZAU	306	1,7	242			64				
CARAS-SEVERIN	333	1,8	283			50				
CALARASI	119	0,7	87			32				
CLUJ	728	4,0	515			211	2			
CONSTANTA	406	2,3	194			208			4	
COVASNA	94	0,5	69			23	2			
DAMBOVITA	557	3,1	503			53				1
DOLJ	446	2,5	317			128	1			
GALATI	379	2,1	285			93	1			
GIURGIU	169	0,9	124			44	1			
GORJ	255	1,4	223			32				
HARGHITA	459	2,5	412			47				
HUNEDOARA	592	3,3	526			66				
IALOMITA	84	0,5	62			22				
IASI	451	2,5	289			161	1			
MARAMURES	551	3,1	486			65				
MEHEDINTI	323	1,8	292			31				
MURES	393	2,2	323			70				
NEAMT	240	1,3	179			61				
OLT	336	1,9	288			48				
PRAHOVA	316	1,8	177			139				
SALAJ	367	2,0	343			24				
SATU MARE	413	2,3	355			57	1			
SIBIU	264	1,5	183			81				
SUCEAVA	532	3,0	463			69				
TELEORMAN	384	2,1	325			58	1			
TIMIS	349	1,9	172			177				
TULCEA	129	0,7	106			23				
VASLUI	185	1,0	160			24	1			
VALCEA	327	1,8	286			41				
VRANCEA	617	3,4	577			40				
MUN. BUCURESTI	1390	7,7	278			1097	15			
ILFOV	364	2,0	83		1	279	1			

Table no. 9

Number of incorporations in the trade registers by domains of activity and business categories in the month of October 2010

CAEN seg.	Field of activity	Total		out of which:								
				PF	companies: 4396				RA	SC	APJ	
					SNC	SCS	SRL	SA				
					No.	No.	No.	No.				
0	1	2	3	4	5	6	7	8	9	10	11	
	Total ROMÂNIA	18022	100,0	13619		1	4366	29		2	4	1
1	Agriculture, hunting and related service activities	10413	57,8	10290			120	2				1
2	Forestry and logging	38	0,2	4			34					
3	Fishing and aquaculture	31	0,2	18			13					
5	Mining of hard and brown coal											
6	Extraction of crude petroleum and natural gas	1	0,0				1					
7	Mining of metal ores											
8	Other mining and quarrying	8	0,0				8					
9	Mining support service activities	3	0,0				3					
10	Manufacture of food products	133	0,7	44			89					
11	Manufacture of beverages	20	0,1	15			5					
12	Manufacture of tobacco products	1	0,0				1					
13	Manufacture of textiles	6	0,0	2			4					
14	Manufacture of wearing apparel	55	0,3	26			29					
15	Tanning and dressing of leather; manufacture of luggage, handbags, saddlery, harness and footwear; dressing and dyeing of fur	18	0,1	4			14					
16	Manufacture of wood and of products of wood and cork, except furniture; manufacture of articles of straw and plaiting materials	56	0,3	28			28					
17	Manufacture of paper and paper products	10	0,1	2			7	1				
18	Printing and reproduction of recorded media	13	0,1	5			8					
19	Manufacture of coke and refined petroleum products											
20	Manufacture of chemicals and chemical products	7	0,0	2			5					
21	Manufacture of basic pharmaceutical products and pharmaceutical preparations	1	0,0				1					
22	Manufacture of rubber and plastic products	23	0,1	8			15					
23	Manufacture of other non-metallic mineral products	18	0,1	9			9					
24	Manufacture of basic metals	5	0,0	3			2					
25	Manufacture of fabricated metal products, except machinery and equipment	70	0,4	50			20					
26	Manufacture of computer, electronic and optical products	5	0,0				5					
27	Manufacture of electrical equipment	2	0,0				2					
28	Manufacture of machinery and equipment n.e.c.	3	0,0	1			2					
29	Manufacture of motor vehicles, trailers and semi-trailers											
30	Manufacture of other transport equipment	5	0,0				5					
31	Manufacture of furniture	31	0,2	13			17	1				
32	Other manufacturing	24	0,1	16			8					
33	Repair and installation of machinery and equipment	26	0,1	13			13					
35	Electricity, gas, steam and air conditioning supply	65	0,4				65					
36	Water collection, treatment and supply	3	0,0				2	1				
37	Sewerage	2	0,0				2					
38	Waste collection, treatment and disposal activities; materials recovery	53	0,3	9			42	2				
39	Remediation activities and other waste management services											
41	Construction of buildings	266	1,5	29		1	236					
42	Civil engineering	35	0,2				34		1			
43	Specialised construction activities	231	1,3	116			115					
45	Wholesale and retail trade and repair of motor vehicles and motorcycles	203	1,1	68			135					
46	Wholesale trade, except of motor vehicles and motorcycles	863	4,8	190			673					
47	Retail trade, except of motor vehicles and motorcycles	1774	9,8	1000			774					
49	Land transport and transport via pipelines	449	2,5	179			270					
50	Water transport	2	0,0	1			1					

Table no. 10

Number of incorporated trading companies and the value of the subscribed share capital, by counties, in the month of October 2010

County	Total registered companies		Subscribed capital		Average subscribed capital on company
	No.	%	thousand Lei	%	thousand Lei
0	1	2	3	4	5
Total ROMÂNIA	4396	100,0	140927,0	100,0	32,2
ALBA	60	1,4	13,3	***	0,2
ARAD	91	2,1	250,0	0,2	2,7
ARGES	114	2,6	237,5	0,2	2,1
BACAU	85	1,9	341,0	0,2	4,0
BIHOR	158	3,6	1642,7	1,2	10,5
BISTRITA-NASAUD	36	0,8	30,5	0,0	0,8
BOTOSANI	31	0,7	196,1	0,1	6,3
BRASOV	128	2,9	231,0	0,2	1,8
BRAILA	47	1,1	20,0	0,0	0,4
BUZAU	64	1,5	48,9	0,0	0,8
CARAS-SEVERIN	50	1,1	26,3	0,0	0,5
CALARASI	32	0,7	7,2	***	0,2
CLUJ	213	4,8	40611,0	28,8	192,5
CONSTANTA	208	4,7	766,2	0,5	3,7
COVASNA	25	0,6	20,9	0,0	0,9
DAMBOVITA	53	1,2	1406,0	1,0	26,5
DOLJ	129	2,9	3641,5	2,6	28,2
GALATI	94	2,1	160,0	0,1	1,7
GIURGIU	45	1,0	9,7	***	0,2
GORJ	32	0,7	6,4	***	0,2
HARGHITA	47	1,1	558,9	0,4	12,2
HUNEDOARA	66	1,5	175,9	0,1	2,7
IALOMITA	22	0,5	11743,1	8,3	559,2
IASI	162	3,7	183,1	0,1	1,1
MARAMURES	65	1,5	32,5	0,0	0,5
MEHEDINTI	31	0,7	7,3	***	0,2
MURES	70	1,6	214,9	0,2	3,1
NEAMT	61	1,4	1009,5	0,7	16,5
OLT	48	1,1	409,6	0,3	8,5
PRAHOVA	139	3,2	297,1	0,2	2,1
SALAJ	24	0,5	6,0	***	0,3
SATU MARE	58	1,3	295,7	0,2	5,2
SIBIU	81	1,8	37,3	0,0	0,5
SUCEAVA	69	1,6	16,9	0,0	0,2
TELEORMAN	59	1,3	218,1	0,2	3,8
TIMIS	177	4,0	2514,0	1,8	14,2
TULCEA	23	0,5	10,2	***	0,4
VASLUI	25	0,6	5,1	***	0,2
VALCEA	41	0,9	147,8	0,1	3,6
VRANCEA	40	0,9	1141,3	0,8	28,5
MUN. BUCURESTI	1112	25,3	59436,0	42,2	53,7
ILFOV	281	6,4	12800,4	9,1	45,6

Note: The average does not include filials because according to the Law no.31/1990 they are not juridical persons

*** Less than 0,01%

Table no. 11

Number of incorporated trading companies and the value of the subscribed share capital by legal forms, in the month of October 2010

Company type	Total registered companies		Subscribed capital		Average subscribed capital on company
	No.	%	thousand Lei	%	thousand Lei
0	1	2	3	4	5
Total ROMÂNIA	4396	100,0	140927,0	100,0	32,2
SNC					
SCS	1	0,0	33,2	0,0	
SA	29	0,7	11378,7	8,1	598,9
SRL	4366	99,3	129515,1	91,9	29,7

Note: The average does not include filials because according to the Law no.31/1990 they are not juridical persons

*** Less than 0,01%

Diagram no.5

