



MINISTRY OF JUSTICE

THE NATIONAL TRADE REGISTER OFFICE

București, Bd. Unirii nr. 74, Bl. J3b, tronson II+III, sector 3; Telefon: +40 21 316.08.04, 316.08.10; Fax: +40 21 316.08.03; Cod poștal: 030837  
Website: [www.onrc.ro](http://www.onrc.ro); E-mail: [onrc@onrc.ro](mailto:onrc@onrc.ro); Cod identificare Fiscală: 14942091

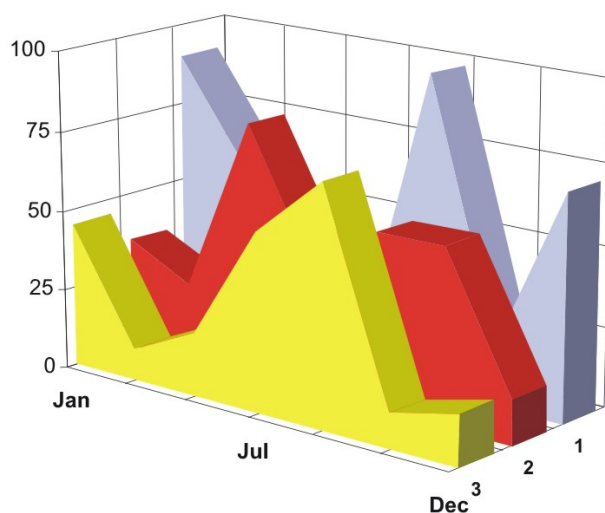
# OPERATIONS IN THE CENTRAL TRADE REGISTER

## STATISTIC SYNTHESIS

OF

**RECORDS IN THE CENTRAL TRADE REGISTER**

**- 30<sup>th</sup> September 2010 - provisional data -**



- ISSUE No. 226 -

**MINISTRY OF JUSTICE  
THE NATIONAL TRADE REGISTER OFFICE**

---

- Operations such as incorporation of trading companies, submission of changes, and strike-off are carried out based on Law No.26/1990, as republished, Law No.31/1990, as republished and on the Methodological Norms no. P/608/1998.
  
- This work reflects the evolution of the operations with the Trade Register Office attached to Bucharest Law Court and the Trade Register Offices attached to County Law Courts.
  
- The data contained in the Central Trade Register refer to operations for which law sets out the obligation of being registered in the trade registers kept by the 42 trade register offices attached to law courts.

*• The content of this publication shall not be reproduced, partly or entirely, in original or modified form, and shall not be stored in a recovery system and shall not be transmitted in any form or by any means without prior written authorization of the Ministry of Justice – The National Trade Register Office.*

*• The content of this publication shall not be used in articles, studies, books, as supporting or explanatory data only by clearly and accurately indicating the source.*

# CONTENTS

Page

<b>1 Definitions</b>	<b>1</b>
<b>2.1 Data related to the period December 1990 –September 2010</b>	<b>3</b>
Table no. 1 – Operations performed in the trade registers by categories of registration during December 1990 –September 2010, total by country and by counties, shares of counties in the total by country	3
Table no. 2 – Operations performed in the trade registers by categories of registration during 1990 –September 2010, total by country and counties, share of categories of operations in the total of each county	4
Table no. 3 – Number and structure of incorporations in the trade registers during 1990-September 2010	5
Chart no. 1 – Structure by years of incorporations in the trade register	
Table no. 4 – Number of incorporations in the trade registers by counties and capital sources during 1990 - September 2010	6
Table no. 5 – Number of incorporations in the trade registers by counties and business categories during 1990 –September 2010	7
<b>2.2 Data related to September 2010</b>	<b>8</b>
Table no. 6 – Operations performed in the trade registers by counties and categories of registrations in the month of September 2010	8
Table no. 7 – Number of incorporations in the trade registers by counties and capital sources in the month of September 2010	9
Table no. 8 – Number of incorporations in the trade registers by counties and business categories in the month of September 2010	10
Table no. 9 –Number of incorporations in the trade registers by domains of activity and business categories in the month of September 2010	11-12
Table no. 10 – Number of incorporated trading companies and the value of subscribed share capital, by counties, in the month of September 2010	13
Table no. 11– Number of incorporated trading companies and the value of subscribed share capital by legal forms, in the month of September 2010	14
Chart no. 5 – Average value of subscribed share capital by types of trading companies in the month of September 2010	14

## Definitions

The Trade Register Office was established based on Law No. 26/1990, as republished and subsequently amended and supplemented, operates as an active institution since 1990 and is twofold structured:

- at national level, represented by the National Trade Register Office organized under the authority of the Ministry of Justice
- at local level, represented by the 42 Trade Register Offices attached to Law Courts, organized under the subordination of the National Trade Register Office

Categories of persons liable to registration in the trade register:

- natural persons: authorized natural persons, individual enterprises and family enterprises currently carrying on trading activities;
- legal persons represented by: Trading Companies, National Societies and Companies, National R&D Institutes, Autonomous Administrations, Co-operative Societies, Agricultural Co-operatives, Co-operative Organizations, Economic Interest Groupings, European Economic Interest Groupings, European Societies, European Co-operative Societies, branches of trading companies with legal establishment, operation and incorporation regime of trading company legal form under which they were incorporated.

### • Terms used in tables and charts

➤ **Number of companies**, depending on the table, represents the number of trading companies incorporated during the reference period, the number of trading companies struck-off from the trade register. The following forms of organization are included: limited liability companies, joint-stock companies, limited partnerships by share, limited partnerships, general partnerships, and branches thereof.

#### ➤ **Value of subscribed share capital:**

- **total, expressed in national currency:** the share capital value resulted by adding up the subscribed values (in cash and in kind) in national currency (lei)

#### ➤ **Regions of economic development:**

<i>North-East:</i>	Suceava, Botoșani, Neamț, Iași, Bacău, Vaslui.
<i>South-East:</i>	Vrancea, Galați, Buzău, Brăila, Tulcea, Constanța.
<i>South-Muntenia:</i>	Argeș, Dâmbovița, Prahova, Teleorman, Giurgiu, Călărași, Ialomița.
<i>South-West Oltenia:</i>	Gorj, Vâlcea, Dolj, Mehedinți, Olt.
<i>West:</i>	Arad, Caraș-Severin, Hunedoara, Timiș.
<i>North-West:</i>	Bihor, Bistrița, Cluj, Satu Mare, Sălaj, Maramureș.
<i>Center:</i>	Alba, Brașov, Covasna, Harghita, Mureș, Sibiu.
<i>Bucharest-Ilfov:</i>	București, Ilfov.

NACE Code – The classification of economic activities in the national economy was approved by GO No. 656/1997, amended by Order No 601/2002 and Order no. 337/2007 of the President of the

National Institute of Statistics, and complies with the international classification used in statistic reports and official documents. The activities are ranked by the harmonization principle, by sections, divisions, groups and classes.

### Abbreviations

- **PF** - Natural Person; the following forms of organization are included in this category: natural persons and family associations registered until 25.04.2008, authorized natural persons, individual enterprises and family enterprises.
- **SNC** - General Partnership
- **SCS** - Limited Partnership
- **SCA** - Limited Partnership by Share
- **SA** - Joint-Stock Company
- **SRL** - Limited Liability Company
- **RA** - Autonomous Administration
- **APJ** - Other legal persons having the obligation to register in the trade register: National R&D Institutes, Economic Interest Groupings, European Economic Interest Groupings, European Societies, European Co-operative Societies, Agricultural Co-operatives, Co-operative Organizations.

### Sources of Information:

The integrated IT system of the trade register is designed by The National Trade Register Office in compliance with the provisions of the related legislation in force. The source of information consists of the trade registers organized in computerized system, kept by the trade register offices attached to law courts.

Table no. 1

**Operations performed in the trade registers by categories of registration during  
December 1990 – September 2010, total by country and by counties, share of  
counties in the total by country**

Counties	Total of registered operations		out of which :					
			Registered companies		Changes in statutory documents		Strike off companies	
	No.	%	No.	%	No.	%	No.	%
0	1	2	3	4	7	8	11	12
<b>Total ROMÂNIA</b>	<b>14341125</b>	<b>100,0</b>	<b>2050529</b>	<b>100,0</b>	<b>11495407</b>	<b>100,0</b>	<b>795189</b>	<b>100,0</b>
ALBA	216601	1,5	33294	1,6	171878	1,5	11429	1,4
ARAD	338511	2,4	49947	2,4	268670	2,3	19894	2,5
ARGES	347126	2,4	52379	2,6	278890	2,4	15857	2,0
BACAU	333216	2,3	51137	2,5	260097	2,3	21982	2,8
BIHOR	435659	3,0	63668	3,1	350483	3,0	21508	2,7
BISTRITA-NASAUD	172572	1,2	25590	1,2	136762	1,2	10220	1,3
BOTOSANI	134519	0,9	25093	1,2	98660	0,9	10766	1,4
BRASOV	561061	3,9	63797	3,1	475760	4,1	21504	2,7
BRAILA	220232	1,5	28630	1,4	183330	1,6	8272	1,0
BUZAU	248645	1,7	36962	1,8	195766	1,7	15917	2,0
CARAS-SEVERIN	166687	1,2	24704	1,2	130234	1,1	11749	1,5
CALARASI	131502	0,9	20735	1,0	102049	0,9	8718	1,1
CLUJ	633785	4,4	94351	4,6	509321	4,4	30113	3,8
CONSTANTA	610762	4,3	84720	4,1	490704	4,3	35338	4,4
COVASNA	124016	0,9	17599	0,9	99542	0,9	6875	0,9
DAMBOVITA	206996	1,4	38180	1,9	150185	1,3	18631	2,3
DOLJ	383690	2,7	53972	2,6	308895	2,7	20823	2,6
GALATI	364530	2,5	48717	2,4	295733	2,6	20080	2,5
GIURGIU	113146	0,8	17199	0,8	88646	0,8	7301	0,9
GORJ	219252	1,5	24203	1,2	185370	1,6	9679	1,2
HARGHITA	214659	1,5	31996	1,6	172213	1,5	10450	1,3
HUNEDOARA	288382	2,0	41605	2,0	229171	2,0	17606	2,2
IALOMITA	132775	0,9	19124	0,9	104154	0,9	9497	1,2
IASI	474009	3,3	68209	3,3	382749	3,3	23051	2,9
MARAMURES	305309	2,1	51683	2,5	230661	2,0	22965	2,9
MEHEDINTI	145754	1,0	22844	1,1	112502	1,0	10408	1,3
MURES	397685	2,8	51164	2,5	325832	2,8	20689	2,6
NEAMT	306134	2,1	43715	2,1	242532	2,1	19887	2,5
OLT	171890	1,2	28276	1,4	131174	1,1	12440	1,6
PRAHOVA	486011	3,4	68575	3,3	390703	3,4	26733	3,4
SALAJ	126929	0,9	20499	1,0	98171	0,9	8259	1,0
SATU MARE	223161	1,6	34841	1,7	173552	1,5	14768	1,9
SIBIU	312611	2,2	40427	2,0	257567	2,2	14617	1,8
SUCEAVA	339814	2,4	50654	2,5	264430	2,3	24730	3,1
TELEORMAN	153655	1,1	23585	1,2	121177	1,1	8893	1,1
TIMIS	478082	3,3	72766	3,5	381029	3,3	24287	3,1
TULCEA	169848	1,2	20920	1,0	139782	1,2	9146	1,2
VASLUI	179065	1,2	25461	1,2	141075	1,2	12529	1,6
VALCEA	220025	1,5	33019	1,6	171772	1,5	15234	1,9
VRANCEA	175366	1,2	24973	1,2	142604	1,2	7789	1,0
MUN. BUCURESTI	2845316	19,8	381351	18,6	2319639	20,2	144326	18,1
ILFOV	232137	1,6	39965	1,9	181943	1,6	10229	1,3

Table no. 2

**Operations performed in the trade registers during December 1990 –  
September 2010, total by country and counties, share of categories of  
operations in the total of each county**

Counties	Total of registered operations		out of which :					
			Registered companies		Changes in statutory documents		Strike off companies	
	No.	%	No.	%	No.	%	No.	%
0	1	2	3	4	7	8	11	12
<b>Total ROMÂNIA</b>	<b>14341125</b>	<b>100,0</b>	<b>2050529</b>	<b>14,3</b>	<b>11495407</b>	<b>80,2</b>	<b>795189</b>	<b>5,5</b>
ALBA	216601	100,0	33294	15,4	171878	79,4	11429	5,3
ARAD	338511	100,0	49947	14,8	268670	79,4	19894	5,9
ARGES	347126	100,0	52379	15,1	278890	80,3	15857	4,6
BACAU	333216	100,0	51137	15,3	260097	78,1	21982	6,6
BIHOR	435659	100,0	63668	14,6	350483	80,4	21508	4,9
BISTRITA-NASAUD	172572	100,0	25590	14,8	136762	79,2	10220	5,9
BOTOSANI	134519	100,0	25093	18,7	98660	73,3	10766	8,0
BRASOV	561061	100,0	63797	11,4	475760	84,8	21504	3,8
BRAILA	220232	100,0	28630	13,0	183330	83,2	8272	3,8
BUZAU	248645	100,0	36962	14,9	195766	78,7	15917	6,4
CARAS-SEVERIN	166687	100,0	24704	14,8	130234	78,1	11749	7,0
CALARASI	131502	100,0	20735	15,8	102049	77,6	8718	6,6
CLUJ	633785	100,0	94351	14,9	509321	80,4	30113	4,8
CONSTANTA	610762	100,0	84720	13,9	490704	80,3	35338	5,8
COVASNA	124016	100,0	17599	14,2	99542	80,3	6875	5,5
DAMBOVITA	206996	100,0	38180	18,4	150185	72,6	18631	9,0
DOLJ	383690	100,0	53972	14,1	308895	80,5	20823	5,4
GALATI	364530	100,0	48717	13,4	295733	81,1	20080	5,5
GIURGIU	113146	100,0	17199	15,2	88646	78,3	7301	6,5
GORJ	219252	100,0	24203	11,0	185370	84,5	9679	4,4
HARGHITA	214659	100,0	31996	14,9	172213	80,2	10450	4,9
HUNEDOARA	288382	100,0	41605	14,4	229171	79,5	17606	6,1
IALOMITA	132775	100,0	19124	14,4	104154	78,4	9497	7,2
IASI	474009	100,0	68209	14,4	382749	80,7	23051	4,9
MARAMURES	305309	100,0	51683	16,9	230661	75,6	22965	7,5
MEHEDINTI	145754	100,0	22844	15,7	112502	77,2	10408	7,1
MURES	397685	100,0	51164	12,9	325832	81,9	20689	5,2
NEAMT	306134	100,0	43715	14,3	242532	79,2	19887	6,5
OLT	171890	100,0	28276	16,5	131174	76,3	12440	7,2
PRAHOVA	486011	100,0	68575	14,1	390703	80,4	26733	5,5
SALAJ	126929	100,0	20499	16,1	98171	77,3	8259	6,5
SATU MARE	223161	100,0	34841	15,6	173552	77,8	14768	6,6
SIBIU	312611	100,0	40427	12,9	257567	82,4	14617	4,7
SUCEAVA	339814	100,0	50654	14,9	264430	77,8	24730	7,3
TELEORMAN	153655	100,0	23585	15,3	121177	78,9	8893	5,8
TIMIS	478082	100,0	72766	15,2	381029	79,7	24287	5,1
TULCEA	169848	100,0	20920	12,3	139782	82,3	9146	5,4
VASLUI	179065	100,0	25461	14,2	141075	78,8	12529	7,0
VALCEA	220025	100,0	33019	15,0	171772	78,1	15234	6,9
VRANCEA	175366	100,0	24973	14,2	142604	81,3	7789	4,4
MUN. BUCURESTI	2845316	100,0	381351	13,4	2319639	81,5	144326	5,1
ILFOV	232137	100,0	39965	17,2	181943	78,4	10229	4,4

Table no.3

Number and structure of incorporations in the trade registers during December 1990 - September 2010

Period (year, month)	Registered companies		Percentage	
	No.	%	%	
0	1	2	3	
<b>Total, 30 September 2010, out of which</b>	<b>2050529</b>	<b>100,00</b>		
Year 1990	81	0,00		
Year 1991	95840	4,67		
Year 1992	137456	6,70		
Year 1993	117078	5,71		
Year 1994	137445	6,70		
Year 1995	65479	3,19		
Year 1996	62089	3,03		
Year 1997	55663	2,71		
Year 1998	63878	3,12		
Year 1999	57197	2,79		
Year 2000	57268	2,79		
Year 2001	61265	2,99		
Year 2002	84780	4,13		
Year 2003	123582	6,03		
Year 2004	144284	7,04		
Year 2005	159464	7,78		
Year 2006	135371	6,60		
Year 2007	144728	7,06		
Year 2008	144173	7,03		
Year 2009	116037	5,66		
<b>Year 2010 (I - XII) out of which :</b>	<b>87377</b>			<b>100,0</b>
January	7739			8,90
February	9623			11,01
March	11893			13,61
April	10273			11,76
May	11306			12,94
June	10197			11,67
July	8934			10,22
August	8283			9,48
September	9129			10,45

Note: Column 2 reveals the annual structure of incorporations; column 3 reveals the structure by months during the current year.

Diagram no.1

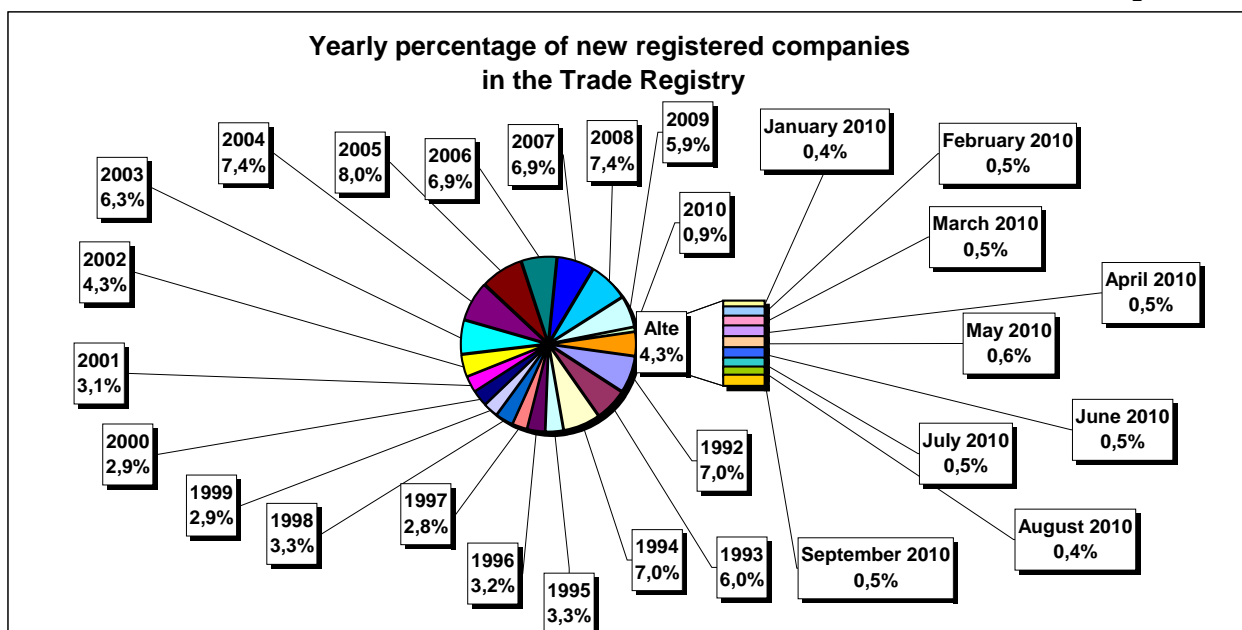


Table no. 4

**Number of incorporations in the trade registers by counties and capital sources during  
December 1990 - September 2010**

Counties	Total		out of which:						Ranking by: *	
			Private capital				State majority capital			Mixed capital (state+private)
			out of which:				out of which:			
			PF	Companies	SC	APJ	RA	Companies		Companies
No.	%	No.	No.	No.	No.	No.	No.	No.		
0	1	2	3	4	5	6	6	7	8	9
<b>Total ROMÂNIA</b>	<b>2050529</b>	<b>100,0</b>	<b>590480</b>	<b>1439825</b>	<b>2044</b>	<b>5707</b>	<b>1391</b>	<b>2416</b>	<b>8673</b>	<b>X</b>
ALBA	33294	1,6	12740	20115	36	148	38	47	170	24
ARAD	49947	2,4	19729	29580	60	170	30	43	336	15
ARGES	52379	2,6	17680	34262	48	175	29	32	153	10
BACAU	51137	2,5	18350	32164	157	161	35	45	226	13
BIHOR	63668	3,1	18257	44785	63	152	40	62	309	8
BISTRITA-NASAUD	25590	1,2	9885	15394	46	99	28	29	109	29
BOTOSANI	25093	1,2	12140	12418	40	179	21	176	119	31
BRASOV	63789	3,1	15681	47617	58	125	49	87	172	7
BRAILA	28638	1,4	8768	19485	42	100	30	46	167	27
BUZAU	36962	1,8	11733	24829	46	153	28	42	131	22
CARAS-SEVERIN	24704	1,2	8912	15400	42	108	39	65	138	33
CALARASI	20735	1,0	6834	13593	22	91	18	77	100	38
CLUJ	94351	4,6	26476	67297	62	158	52	42	264	2
CONSTANTA	84720	4,1	18326	65452	87	210	51	51	543	3
COVASNA	17599	0,9	6927	10396	41	70	24	32	109	41
DAMBOVITA	38180	1,9	17886	19862	32	139	30	75	156	21
DOLJ	53972	2,6	13116	40346	39	169	40	58	204	9
GALATI	48717	2,4	12150	36168	35	140	30	51	143	16
GIURGIU	17200	0,8	4350	12507	15	84	23	110	111	42
GORJ	24202	1,2	6753	17005	26	184	51	83	100	34
HARGHITA	31996	1,6	14320	17221	64	92	24	43	232	26
HUNEDOARA	41605	2,0	12103	28961	33	84	42	95	287	18
IALOMITA	19124	0,9	7566	11296	27	83	15	46	91	40
IASI	68209	3,3	22682	44818	87	169	34	77	344	6
MARAMURES	51683	2,5	21636	29674	43	128	38	41	124	11
MEHEDINTI	22844	1,1	8319	14273	19	88	19	27	99	36
MURES	51164	2,5	20236	30468	68	159	30	34	169	12
NEAMT	43715	2,1	16856	26402	66	165	30	30	166	17
OLT	28276	1,4	11223	16647	27	166	26	64	123	28
PRAHOVA	68575	3,3	23050	44876	67	184	52	74	272	5
SALAJ	20499	1,0	8586	11651	41	110	19	28	64	39
SATU MARE	34841	1,7	12469	22037	41	98	21	42	134	23
SIBIU	40427	2,0	11893	28071	37	121	34	110	161	19
SUCEAVA	50654	2,5	24472	25581	73	209	31	67	221	14
TELEORMAN	23585	1,2	8728	14410	33	163	21	46	184	35
TIMIS	72766	3,5	14073	58011	69	155	38	69	351	4
TULCEA	20920	1,0	7921	12623	36	67	19	42	212	37
VASLUI	25461	1,2	12648	12485	22	113	16	41	136	30
VALCEA	33019	1,6	13804	18783	64	171	42	40	115	25
VRANCEA	24973	1,2	8270	16394	35	115	17	28	114	32
MUN. BUCURESTI	381351	18,6	37187	342584	64	154	116	106	1141	1
ILFOV	39965	1,9	5745	33884	31	98	21	13	173	20

\*) The total number of incorporations (col 1)

Table no. 5

**Number of incorporations in the trade registers by counties and business categories  
during December 1990 – September 2010**

County	Total		out of which:							
			PF	companies: 1450914				RA	SC	APJ
	SNC	SCS		SRL	SA					
	No.	%	No.	No.	No.	No.	No.	No.	No.	
0	1	2	3	4	5	6	7	8	9	10
<b>Total ROMÂNIA</b>	<b>2050529</b>	<b>100,0</b>	<b>590480</b>	<b>32680</b>	<b>1618</b>	<b>1382720</b>	<b>33889</b>	<b>1391</b>	<b>2044</b>	<b>5707</b>
ALBA	33294	1,6	12740	890	11	18856	575	38	36	148
ARAD	49947	2,4	19729	54	13	29184	707	30	60	170
ARGES	52379	2,6	17680	107	15	33481	844	29	48	175
BACAU	51137	2,5	18350	1299	4	30379	752	35	157	161
BIHOR	63668	3,1	18257	127	48	44049	932	40	63	152
BISTRITA-NASAUD	25590	1,2	9885	146	22	14941	423	28	46	99
BOTOSANI	25093	1,2	12140	468	1	11783	461	21	40	179
BRASOV	63797	3,1	15681	239	21	46731	893	49	58	125
BRAILA	28630	1,4	8768	376	12	18764	538	30	42	100
BUZAU	36962	1,8	11733	3747	46	20614	595	28	46	153
CARAS-SEVERIN	24704	1,2	8912	118	9	15001	475	39	42	108
CALARASI	20735	1,0	6834	609	3	12796	362	18	22	91
CLUJ	94351	4,6	26476	2112	21	64115	1355	52	62	158
CONSTANTA	84720	4,1	18326	311	23	64186	1526	51	87	210
COVASNA	17599	0,9	6927	148	4	10075	310	24	41	70
DAMBOVITA	38180	1,9	17886	60	8	19519	506	30	32	139
DOLJ	53972	2,6	13116	1560	8	38124	916	40	39	169
GALATI	48717	2,4	12150	1574	6	33916	866	30	35	140
GIURGIU	17199	0,8	4350	35	8	12351	333	23	15	84
GORJ	24203	1,2	6753	29	1	16651	508	51	26	184
HARGHITA	31996	1,6	14320	62	7	16924	503	24	64	92
HUNEDOARA	41605	2,0	12103	1166	98	27382	697	42	33	84
IALOMITA	19124	0,9	7566	269	12	10797	355	15	27	83
IASI	68209	3,3	22682	508	111	43575	1043	34	87	169
MARAMURES	51683	2,5	21636	1927	23	27277	611	38	43	128
MEHEDINTI	22844	1,1	8319	427	3	13625	344	19	19	88
MURES	51164	2,5	20236	37	34	29915	685	30	68	159
NEAMT	43715	2,1	16856	3293	30	22588	687	30	66	165
OLT	28276	1,4	11223	1611	1	14717	505	26	27	166
PRAHOVA	68575	3,3	23050	3122	15	41147	938	52	67	184
SALAJ	20499	1,0	8586	600	4	10838	301	19	41	110
SATU MARE	34841	1,7	12469	283	9	21439	481	21	41	98
SIBIU	40427	2,0	11893	778	49	26833	682	34	37	121
SUCEAVA	50654	2,5	24472	438	8	24821	602	31	73	209
TELEORMAN	23585	1,2	8728	272	399	13533	436	21	33	163
TIMIS	72766	3,5	14073	616	34	56488	1293	38	69	155
TULCEA	20920	1,0	7921	1363	114	10915	485	19	36	67
VASLUI	25461	1,2	12648	90	13	12134	425	16	22	113
VALCEA	33019	1,6	13804	364	6	18060	508	42	64	171
VRANCEA	24973	1,2	8270	356	10	15703	467	17	35	115
MUN. BUCURESTI	381351	18,6	37187	1039	321	335194	7276	116	64	154
ILFOV	39965	1,9	5745	50	33	33299	688	21	31	98

Table no. 6

**Operations performed in the trade registers by counties and categories of registration in the month of September 2010**

County	Total of operations carried on		out of which:					
			New incorporations		Changes in statutory documents		Strike off companies	
	No.	%	No.	%	No.	%	No.	%
0	1	2	3	4	5	6	9	10
<b>Total ROMÂNIA</b>	<b>79590</b>	<b>100,0</b>	<b>9129</b>	<b>11,5</b>	<b>59414</b>	<b>74,7</b>	<b>11047</b>	<b>13,9</b>
ALBA	971	100,0	243	25,0	632	65,1	96	9,9
ARAD	1381	100,0	190	13,8	1102	79,8	89	6,4
ARGES	1579	100,0	295	18,7	1157	73,3	127	8,0
BACAU	1795	100,0	250	13,9	1358	75,7	187	10,4
BIHOR	2132	100,0	315	14,8	1652	77,5	165	7,7
BISTRITA-NASAUD	1092	100,0	211	19,3	837	76,6	44	4,0
BOTOSANI	618	100,0	113	18,3	431	69,7	74	12,0
BRASOV	2410	100,0	255	10,6	1978	82,1	177	7,3
BRAILA	943	100,0	130	13,8	682	72,3	131	13,9
BUZAU	1184	100,0	170	14,4	848	71,6	166	14,0
CARAS-SEVERIN	603	100,0	96	15,9	426	70,6	81	13,4
CALARASI	585	100,0	80	13,7	440	75,2	65	11,1
CLUJ	4260	100,0	372	8,7	3466	81,4	422	9,9
CONSTANTA	3927	100,0	367	9,3	3348	85,3	212	5,4
COVASNA	2141	100,0	53	2,5	1239	57,9	849	39,7
DAMBOVITA	922	100,0	129	14,0	665	72,1	128	13,9
DOLJ	1916	100,0	244	12,7	1481	77,3	191	10,0
GALATI	1661	100,0	238	14,3	1312	79,0	111	6,7
GIURGIU	613	100,0	107	17,5	468	76,3	38	6,2
GORJ	1107	100,0	94	8,5	888	80,2	125	11,3
HARGHITA	1213	100,0	146	12,0	898	74,0	169	13,9
HUNEDOARA	1416	100,0	253	17,9	1065	75,2	98	6,9
IALOMITA	784	100,0	77	9,8	530	67,6	177	22,6
IASI	860	100,0	321	37,3	238	27,7	301	35,0
MARAMURES	1319	100,0	202	15,3	1032	78,2	85	6,4
MEHEDINTI	592	100,0	134	22,6	418	70,6	40	6,8
MURES	2005	100,0	206	10,3	1610	80,3	189	9,4
NEAMT	1169	100,0	184	15,7	884	75,6	101	8,6
OLT	583	100,0	91	15,6	476	81,6	16	2,7
PRAHOVA	2367	100,0	306	12,9	1790	75,6	271	11,4
SALAJ	902	100,0	99	11,0	716	79,4	87	9,6
SATU MARE	1180	100,0	160	13,6	943	79,9	77	6,5
SIBIU	4922	100,0	226	4,6	2764	56,2	1932	39,3
SUCEAVA	1630	100,0	227	13,9	1254	76,9	149	9,1
TELEORMAN	689	100,0	118	17,1	462	67,1	109	15,8
TIMIS	6912	100,0	271	3,9	4236	61,3	2405	34,8
TULCEA	715	100,0	136	19,0	551	77,1	28	3,9
VASLUI	806	100,0	90	11,2	656	81,4	60	7,4
VALCEA	855	100,0	136	15,9	634	74,2	85	9,9
VRANCEA	725	100,0	94	13,0	568	78,3	63	8,7
MUN. BUCURESTI	14245	100,0	1377	9,7	11868	83,3	1000	7,0
ILFOV	1861	100,0	323	17,4	1411	75,8	127	6,8

\*) by effect of implementation of Law no. 314/2001, art.1 and art. 6

Table no.7

**Number of incorporations in the trade registers by counties and capital sources in the month of September 2010**

County	Total		out of which:						Ranking by: *	
			Private capital				State majority capital			Mixed capital (state+private)
			out of which:				out of which:			
			PF	Companies	SC	APJ	RA	Companies		Companies
No.	%	No.	No.	No.		No.	No.	No.		
0	1	2	3	4	5	6	7	8	9	
<b>Total ROMÂNIA</b>	<b>9129</b>	<b>100,0</b>	<b>4757</b>	<b>4351</b>	<b>6</b>	<b>5</b>	<b>1</b>	<b>8</b>	<b>2</b>	<b>X</b>
ALBA	243	2,7	185	58						29
ARAD	190	2,1	120	69				1		22
ARGES	295	3,2	154	138		1		2		35
BACAU	250	2,7	159	84	6			1		31
BIHOR	315	3,5	191	124						37
BISTRITA-NASAUD	211	2,3	180	31						25
BOTOSANI	113	1,2	81	30		2				11
BRASOV	255	2,8	118	137						33
BRAILA	130	1,4	82	47				1		14
BUZAU	170	1,9	92	78						20
CARAS-SEVERIN	96	1,1	51	45						8
CALARASI	80	0,9	49	31						3
CLUJ	372	4,1	179	193						41
CONSTANTA	367	4,0	139	228						40
COVASNA	53	0,6	41	12						1
DAMBOVITA	129	1,4	80	49						13
DOLJ	244	2,7	118	126						30
GALATI	238	2,6	134	104						28
GIURGIU	108	1,2	38	69					1	10
GORJ	93	1,0	64	29						6
HARGHITA	146	1,6	108	38						18
HUNEDOARA	253	2,8	175	77					1	32
IALOMITA	77	0,8	47	30						2
IASI	321	3,5	181	139				1		38
MARAMURES	202	2,2	118	84						23
MEHEDINTI	134	1,5	107	27						15
MURES	206	2,3	131	75						24
NEAMT	184	2,0	121	63						21
OLT	91	1,0	46	45						5
PRAHOVA	306	3,4	184	122						36
SALAJ	99	1,1	65	34						9
SATU MARE	160	1,8	98	61			1	1		19
SIBIU	226	2,5	124	102						26
SUCEAVA	227	2,5	155	72						27
TELEORMAN	118	1,3	61	57						12
TIMIS	271	3,0	104	166		1				34
TULCEA	136	1,5	94	42						16
VASLUI	90	1,0	70	19		1				4
VALCEA	136	1,5	102	34						17
VRANCEA	94	1,0	50	43				1		7
MUN. BUCURESTI	1377	15,1	292	1085						42
ILFOV	323	3,5	69	254						39

\*) The total number of incorporations (col 1)

\*\*\* Less than 0,01%

Table no.8

**Number of incorporations in the trade registers by counties and  
business categories in the month of September 2010**

County	Total		out of which:							
			PF	companies: 4360				RA	SC	APJ
	SNC	SCS		SRL	SA					
	No.	%	No.	No.	No.	No.	No.	No.		
0	1	2	3	4	5	6	7	8	9	
<b>Total ROMÂNIA</b>	<b>9129</b>	<b>100,0</b>	<b>4757</b>			<b>4331</b>	<b>29</b>	<b>1</b>	<b>6</b>	<b>5</b>
ALBA	243	2,7	185			58				
ARAD	190	2,1	120			67	3			
ARGES	295	3,2	154			137	3			1
BACAU	250	2,7	159			84	1		6	
BIHOR	315	3,5	191			124				
BISTRITA-NASAUD	211	2,3	180			31				
BOTOSANI	113	1,2	81			30				2
BRASOV	255	2,8	118			137				
BRAILA	130	1,4	82			47	1			
BUZAU	170	1,9	92			77	1			
CARAS-SEVERIN	96	1,1	51			45				
CALARASI	80	0,9	49			31				
CLUJ	372	4,1	179			191	2			
CONSTANTA	367	4,0	139			228				
COVASNA	53	0,6	41			12				
DAMBOVITA	129	1,4	80			48	1			
DOLJ	244	2,7	118			125	1			
GALATI	238	2,6	134			104				
GIURGIU	107	1,2	38			68	1			
GORJ	94	1,0	64			29	1			
HARGHITA	146	1,6	108			37	1			
HUNEDOARA	253	2,8	175			77	1			
IALOMITA	77	0,8	47			30				
IASI	321	3,5	181			139	1			
MARAMURES	202	2,2	118			83	1			
MEHEDINTI	134	1,5	107			27				
MURES	206	2,3	131			75				
NEAMT	184	2,0	121			63				
OLT	91	1,0	46			45				
PRAHOVA	306	3,4	184			121	1			
SALAJ	99	1,1	65			34				
SATU MARE	160	1,8	98			61		1		
SIBIU	226	2,5	124			101	1			
SUCEAVA	227	2,5	155			72				
TELEORMAN	118	1,3	61			57				
TIMIS	271	3,0	104			166				1
TULCEA	136	1,5	94			42				
VASLUI	90	1,0	70			19				1
VALCEA	136	1,5	102			34				
VRANCEA	94	1,0	50			43	1			
MUN. BUCURESTI	1377	15,1	292			1079	6			
ILFOV	323	3,5	69			253	1			

Table no. 9

**Number of incorporations in the trade registers by domains of activity and business categories in  
the month of September 2010**

CAEN seg.	Field of activity	Total		out of which:							
				PF	companies: 4360				RA	SC	APJ
					SNC	SCS	SRL	SA			
					No.	No.	No.	No.			
0	1	2	3	4	5	6	7	8	9	10	11
	<b>Total ROMÂNIA</b>	<b>9129</b>	<b>100,0</b>	<b>4757</b>			<b>4331</b>	<b>29</b>	<b>1</b>	<b>6</b>	<b>5</b>
1	Agriculture, hunting and related service activities	1094	12,0	982			109				3
2	Forestry and logging	43	0,5	4			38		1		
3	Fishing and aquaculture	44	0,5	34			10				
5	Mining of hard and brown coal	1	0,0				1				
6	Extraction of crude petroleum and natural gas	2	0,0				2				
7	Mining of metal ores	1	0,0				1				
8	Other mining and quarrying	9	0,1				8	1			
9	Mining support service activities	5	0,1	1			4				
10	Manufacture of food products	123	1,3	53			70				
11	Manufacture of beverages	20	0,2	18			2				
12	Manufacture of tobacco products										
13	Manufacture of textiles	14	0,2	4			10				
14	Manufacture of wearing apparel	70	0,8	24			45	1			
15	Tanning and dressing of leather; manufacture of luggage, handbags, saddlery, harness and footwear; dressing and dyeing of fur	14	0,2	4			9			1	
16	Manufacture of wood and of products of wood and cork, except furniture; manufacture of articles of straw and plaiting materials	58	0,6	28			30				
17	Manufacture of paper and paper products	6	0,1	1			5				
18	Printing and reproduction of recorded media	16	0,2	4			12				
19	Manufacture of coke and refined petroleum products	1	0,0				1				
20	Manufacture of chemicals and chemical products	4	0,0				4				
21	Manufacture of basic pharmaceutical products and pharmaceutical preparations										
22	Manufacture of rubber and plastic products	24	0,3	7			17				
23	Manufacture of other non-metallic mineral products	21	0,2	16			5				
24	Manufacture of basic metals	6	0,1	3			3				
25	Manufacture of fabricated metal products, except machinery and equipment	63	0,7	35			28				
26	Manufacture of computer, electronic and optical products	3	0,0				3				
27	Manufacture of electrical equipment	2	0,0				2				
28	Manufacture of machinery and equipment n.e.c.	7	0,1				7				
29	Manufacture of motor vehicles, trailers and semi-trailers	3	0,0				3				
30	Manufacture of other transport equipment	4	0,0				4				
31	Manufacture of furniture	27	0,3	14			13				
32	Other manufacturing	43	0,5	29			14				
33	Repair and installation of machinery and equipment	21	0,2	11			10				
35	Electricity, gas, steam and air conditioning supply	38	0,4				33	5			
36	Water collection, treatment and supply	14	0,2				11	3			
37	Sewerage	4	0,0	1			3				
38	Waste collection, treatment and disposal activities; materials recovery	62	0,7	10			50	2			
39	Remediation activities and other waste management services	1	0,0				1				
41	Construction of buildings	287	3,1	55			227	5			
42	Civil engineering	23	0,3				23				
43	Specialised construction activities	263	2,9	158			105				
45	Wholesale and retail trade and repair of motor vehicles and motorcycles	239	2,6	86			153				
46	Wholesale trade, except of motor vehicles and motorcycles	883	9,7	209			672				2
47	Retail trade, except of motor vehicles and motorcycles	2045	22,4	1247			797	1			
49	Land transport and transport via pipelines	454	5,0	183			271				
50	Water transport	2	0,0				2				



Table no. 10

**Number of incorporated trading companies and the value of the subscribed share capital, by counties, in the month of September 2010**

County	Total registered companies		Subscribed capital		Average subscribed capital on company
	No.	%	thousand Lei	%	thousand Lei
0	1	2	3	4	5
<b>Total ROMÂNIA</b>	<b>4360</b>	<b>100,0</b>	<b>116593,4</b>	<b>100,0</b>	<b>26,8</b>
ALBA	58	1,3	348,4	0,3	6,0
ARAD	70	1,6	1665,4	1,4	23,8
ARGES	140	3,2	2541,1	2,2	18,2
BACAU	85	1,9	24076,6	20,7	283,3
BIHOR	124	2,8	1776,4	1,5	14,4
BISTRITA-NASAUD	31	0,7	33,6	0,0	1,1
BOTOSANI	30	0,7	6,0	***	0,2
BRASOV	137	3,1	113,7	0,1	0,8
BRAILA	48	1,1	114,1	0,1	2,4
BUZAU	78	1,8	265,2	0,2	3,4
CARAS-SEVERIN	45	1,0	93,4	0,1	2,1
CALARASI	31	0,7	1908,8	1,6	61,6
CLUJ	193	4,4	588,3	0,5	3,1
CONSTANTA	228	5,2	7845,2	6,7	34,6
COVASNA	12	0,3	38,6	0,0	3,2
DAMBOVITA	49	1,1	24,7	0,0	0,5
DOLJ	126	2,9	205,2	0,2	1,6
GALATI	104	2,4	324,7	0,3	3,1
GIURGIU	69	1,6	225,6	0,2	3,3
GORJ	30	0,7	7,0	***	0,2
HARGHITA	38	0,9	330,9	0,3	8,7
HUNEDOARA	78	1,8	472,8	0,4	6,1
IALOMITA	30	0,7	19,2	0,0	0,6
IASI	140	3,2	434,2	0,4	3,1
MARAMURES	84	1,9	2835,9	2,4	34,2
MEHEDINTI	27	0,6	500,2	0,4	18,5
MURES	75	1,7	1036,1	0,9	13,8
NEAMT	63	1,4	7514,0	6,4	119,3
OLT	45	1,0	36,2	0,0	0,8
PRAHOVA	122	2,8	1887,9	1,6	15,5
SALAJ	34	0,8	6,8	***	0,2
SATU MARE	61	1,4	16,1	0,0	0,3
SIBIU	102	2,3	325,4	0,3	3,2
SUCEAVA	72	1,7	72,9	0,1	1,0
TELEORMAN	57	1,3	63,8	0,1	1,1
TIMIS	166	3,8	741,8	0,6	4,5
TULCEA	42	1,0	10,6	***	0,3
VASLUI	19	0,4	3,8	***	0,2
VALCEA	34	0,8	14,0	0,0	0,4
VRANCEA	44	1,0	121,6	0,1	2,8
MUN. BUCURESTI	1085	24,9	54966,4	47,1	50,8
ILFOV	254	5,8	2980,6	2,6	11,7

*Note: The average does not include filials because according to the Law no.31/1990 they are not juridical persons*

\*\*\* Less than 0,01%

Table no. 11

**Number of incorporated trading companies and the value of the subscribed share capital by legal forms, in the month of September 2010**

Company type	Total registered companies		Subscribed capital		Average subscribed capital on company
	No.	%	thousand Lei	%	thousand Lei
0	1	2	3	4	5
<b>Total ROMÂNIA</b>	<b>4360</b>	<b>100,0</b>	<b>116593,4</b>	<b>100,0</b>	<b>26,8</b>
<b>SNC</b>					
<b>SCS</b>					
<b>SA</b>	29	0,7	35707,7	30,6	1373,4
<b>SRL</b>	4331	99,3	80885,7	69,4	18,7

*Note: The average does not include filials because according to the Law no.31/1990 they are not juridical persons*

\*\*\* Less than 0,01%

Diagram no.5

