



MINISTRY OF JUSTICE

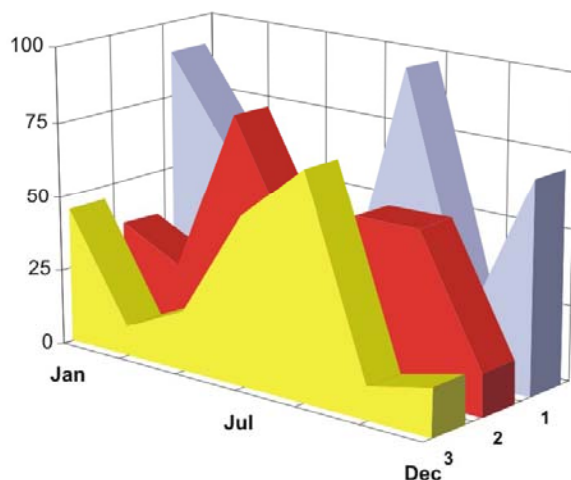
THE NATIONAL TRADE REGISTER OFFICE

București, Bd. Unirii nr. 74, Bl. J3b, tronson II+III, sector 3; Telefon: +40 21 316.08.04, 316.08.10; Fax: +40 21 316.08.03; Cod poștal: 030837
Website: www.onrc.ro; E-mail: onrc@onrc.ro; Cod Identificare Fiscală: 14942091

OPERATIONS IN THE CENTRAL TRADE REGISTER

STATISTIC SYNTHESIS

OF RECORDS IN THE CENTRAL TRADE REGISTER - 31th August 2010 - provisional data -



- ISSUE No. 225 -

MINISTRY OF JUSTICE THE NATIONAL TRADE REGISTER OFFICE

- Operations such as incorporation of trading companies, submission of changes, and strike-off are carried out based on Law No.26/1990, as republished, Law No.31/1990, as republished and on the Methodological Norms no. P/608/1998.
- This work reflects the evolution of the operations with the Trade Register Office attached to Bucharest Law Court and the Trade Register Offices attached to County Law Courts.
- The data contained in the Central Trade Register refer to operations for which law sets out the obligation of being registered in the trade registers kept by the 42 trade register offices attached to law courts.

• The content of this publication shall not be reproduced, partly or entirely, in original or modified form, and shall not be stored in a recovery system and shall not be transmitted in any form or by any means without prior written authorization of the Ministry of Justice – The National Trade Register Office.

• The content of this publication December be used in articles, studies, books, as supporting or explanatory data only by clearly and accurately indicating the source.

CONTENTS

Page

1	Definitions	1
2.1	Data related to the period December 1990 –August 2010	3
<hr/>		
	Table no. 1 – Operations performed in the trade registers by categories of registration during December 1990 –August 2010, total by country and by counties, shares of counties in the total by country	3
	Table no. 2 – Operations performed in the trade registers by categories of registration during 1990 –August 2010, total by country and counties, share of categories of operations in the total of each county	4
	Table no. 3 – Number and structure of incorporations in the trade registers during 1990-August 2010	5
	Chart no. 1 – Structure by years of incorporations in the trade register	
	Table no. 4 – Number of incorporations in the trade registers by counties and capital sources during 1990 - August 2010	6
	Table no. 5 – Number of incorporations in the trade registers by counties and business categories during 1990 –August 2010	7
<hr/>		
2.2	Data related to August 2010	8
<hr/>		
	Table no. 6 – Operations performed in the trade registers by counties and categories of registrations in the month of August 2010	8
	Table no. 7 – Number of incorporations in the trade registers by counties and capital sources in the month of August 2010	9
	Table no. 8 – Number of incorporations in the trade registers by counties and business categories in the month of August 2010	10
	Table no. 9 –Number of incorporations in the trade registers by domains of activity and business categories in the month of August 2010	11-12
	Table no. 10 – Number of incorporated trading companies and the value of subscribed share capital, by counties, in the month of August 2010	13
	Table no. 11– Number of incorporated trading companies and the value of subscribed share capital by legal forms, in the month of August 2010	14
	Chart no. 5 – Average value of subscribed share capital by types of trading companies in the month of August 2010	14

Definitions

The Trade Register Office was established based on Law No. 26/1990, as republished and subsequently amended and supplemented, operates as an active institution since 1990 and is twofold structured:

- at national level, represented by the National Trade Register Office organized under the authority of the Ministry of Justice
- at local level, represented by the 42 Trade Register Offices attached to Law Courts, organized under the subordination of the National Trade Register Office

Categories of persons liable to registration in the trade register:

- natural persons: authorized natural persons, individual enterprises and family enterprises currently carrying on trading activities;
 - legal persons represented by: Trading Companies, National Societies and Companies, National R&D Institutes, Autonomous Administrations, Co-operative Societies, Agricultural Co-operatives, Co-operative Organizations, Economic Interest Groupings, European Economic Interest Groupings, European Societies, European Co-operative Societies, branches of trading companies with legal establishment, operation and incorporation regime of trading company legal form under which they were incorporated.
- **Terms used in tables and charts**
 - **Number of companies**, depending on the table, represents the number of trading companies incorporated during the reference period, the number of trading companies struck-off from the trade register. The following forms of organization are included: limited liability companies, joint-stock companies, limited partnerships by share, limited partnerships, general partnerships, and branches thereof.
 - **Value of subscribed share capital:**
 - **total, expressed in national currency:** the share capital value resulted by adding up the subscribed values (in cash and in kind) in national currency (lei)

- **Regions of economic development:**

<i>North-East:</i>	Suceava, Botoșani, Neamț, Iași, Bacău, Vaslui.
<i>South-East:</i>	Vrancea, Galați, Buzău, Brăila, Tulcea, Constanța.
<i>South-Muntenia:</i>	Argeș, Dâmbovița, Prahova, Teleorman, Giurgiu, Călărași, Ialomița.
<i>South-West Oltenia:</i>	Gorj, Vâlcea, Dolj, Mehedinți, Olt.
<i>West:</i>	Arad, Caraș-Severin, Hunedoara, Timiș.
<i>North-West:</i>	Bihor, Bistrița, Cluj, Satu Mare, Sălaj, Maramureș.
<i>Center:</i>	Alba, Brașov, Covasna, Harghita, Mureș, Sibiu.
<i>Bucharest-Ilfov:</i>	București, Ilfov.

NACE Code – The classification of economic activities in the national economy was approved by GO No. 656/1997, amended by Order No 601/2002 and Order no. 337/2007 of the President of the National Institute of Statistics, and complies with the international classification used in statistic reports and official documents. The activities are ranked by the harmonization principle, by sections, divisions, groups and classes.

Abbreviations

- **PF** - Natural Person; the following forms of organization are included in this category: natural persons and family associations registered until 25.04.2008, authorized natural persons, individual enterprises and family enterprises.
- **SNC** - General Partnership
- **SCS** - Limited Partnership
- **SCA** - Limited Partnership by Share
- **SA** - Joint-Stock Company
- **SRL** - Limited Liability Company
- **RA** - Autonomous Administration
- **APJ** - Other legal persons having the obligation to register in the trade register: National R&D Institutes, Economic Interest Groupings, European Economic Interest Groupings, European Societies, European Co-operative Societies, Agricultural Co-operatives, Co-operative Organizations.

Sources of Information:

The integrated IT system of the trade register is designed by The National Trade Register Office in compliance with the provisions of the related legislation in force. The source of information consists of the trade registers organized in computerized system, kept by the trade register offices attached to law courts.

Table no. 1

**Operations performed in the trade registers by categories of registration during
December 1990 – August 2010, total by country and by counties, share of counties
in the total by country**

Counties	Total of registered operations		out of which :					
			Registered companies		Changes in statutory documents		Strike off companies	
	No.	%	No.	%	No.	%	No.	%
0	1	2	3	4	7	8	11	12
Total ROMÂNIA	14261535	100,0	2041400	100,0	11435993	100,0	784142	100,0
ALBA	215630	1,5	33051	1,6	171246	1,5	11333	1,4
ARAD	337130	2,4	49757	2,4	267568	2,3	19805	2,5
ARGES	345547	2,4	52084	2,6	277733	2,4	15730	2,0
BACAU	331421	2,3	50887	2,5	258739	2,3	21795	2,8
BIHOR	433527	3,0	63353	3,1	348831	3,1	21343	2,7
BISTRITA-NASAUD	171480	1,2	25379	1,2	135925	1,2	10176	1,3
BOTOSANI	133901	0,9	24980	1,2	98229	0,9	10692	1,4
BRASOV	558651	3,9	63542	3,1	473782	4,1	21327	2,7
BRAILA	219289	1,5	28500	1,4	182648	1,6	8141	1,0
BUZAU	247461	1,7	36792	1,8	194918	1,7	15751	2,0
CARAS-SEVERIN	166084	1,2	24608	1,2	129808	1,1	11668	1,5
CALARASI	130917	0,9	20655	1,0	101609	0,9	8653	1,1
CLUJ	629525	4,4	93979	4,6	505855	4,4	29691	3,8
CONSTANTA	606835	4,3	84353	4,1	487356	4,3	35126	4,5
COVASNA	121875	0,9	17546	0,9	98303	0,9	6026	0,8
DAMBOVITA	206074	1,4	38051	1,9	149520	1,3	18503	2,4
DOLJ	381774	2,7	53728	2,6	307414	2,7	20632	2,6
GALATI	362869	2,5	48479	2,4	294421	2,6	19969	2,5
GIURGIU	112533	0,8	17092	0,8	88178	0,8	7263	0,9
GORJ	218145	1,5	24109	1,2	184482	1,6	9554	1,2
HARGHITA	213446	1,5	31850	1,6	171315	1,5	10281	1,3
HUNEDOARA	286966	2,0	41352	2,0	228106	2,0	17508	2,2
IALOMITA	131991	0,9	19047	0,9	103624	0,9	9320	1,2
IASI	473149	3,3	67888	3,3	382511	3,3	22750	2,9
MARAMURES	303990	2,1	51481	2,5	229629	2,0	22880	2,9
MEHEDINTI	145162	1,0	22710	1,1	112084	1,0	10368	1,3
MURES	395680	2,8	50958	2,5	324222	2,8	20500	2,6
NEAMT	304965	2,1	43531	2,1	241648	2,1	19786	2,5
OLT	171307	1,2	28185	1,4	130698	1,1	12424	1,6
PRAHOVA	483644	3,4	68269	3,3	388913	3,4	26462	3,4
SALAJ	126027	0,9	20400	1,0	97455	0,9	8172	1,0
SATU MARE	221981	1,6	34681	1,7	172609	1,5	14691	1,9
SIBIU	307689	2,2	40201	2,0	254803	2,2	12685	1,6
SUCEAVA	338184	2,4	50427	2,5	263176	2,3	24581	3,1
TELEORMAN	152966	1,1	23467	1,1	120715	1,1	8784	1,1
TIMIS	471170	3,3	72495	3,6	376793	3,3	21882	2,8
TULCEA	169133	1,2	20784	1,0	139231	1,2	9118	1,2
VASLUI	178259	1,2	25371	1,2	140419	1,2	12469	1,6
VALCEA	219170	1,5	32883	1,6	171138	1,5	15149	1,9
VRANCEA	174641	1,2	24879	1,2	142036	1,2	7726	1,0
MUN. BUCURESTI	2831070	19,9	379973	18,6	2307771	20,2	143326	18,3
ILFOV	230276	1,6	39642	1,9	180532	1,6	10102	1,3

Table no. 2

Operations performed in the trade registers during December 1990 – August 2010, total by country and counties, share of categories of operations in the total of each county

Counties	Total of registered operations		out of which :					
			Registered companies		Changes in statutory documents		Strike off companies	
	No.	%	No.	%	No.	%	No.	%
0	1	2	3	4	7	8	11	12
Total ROMÂNIA	14261535	100,0	2041400	14,3	11435993	80,2	784142	5,5
ALBA	215630	100,0	33051	15,3	171246	79,4	11333	5,3
ARAD	337130	100,0	49757	14,8	267568	79,4	19805	5,9
ARGES	345547	100,0	52084	15,1	277733	80,4	15730	4,6
BACAU	331421	100,0	50887	15,4	258739	78,1	21795	6,6
BIHOR	433527	100,0	63353	14,6	348831	80,5	21343	4,9
BISTRITA-NASAUD	171480	100,0	25379	14,8	135925	79,3	10176	5,9
BOTOSANI	133901	100,0	24980	18,7	98229	73,4	10692	8,0
BRASOV	558651	100,0	63542	11,4	473782	84,8	21327	3,8
BRAILA	219289	100,0	28500	13,0	182648	83,3	8141	3,7
BUZAU	247461	100,0	36792	14,9	194918	78,8	15751	6,4
CARAS-SEVERIN	166084	100,0	24608	14,8	129808	78,2	11668	7,0
CALARASI	130917	100,0	20655	15,8	101609	77,6	8653	6,6
CLUJ	629525	100,0	93979	14,9	505855	80,4	29691	4,7
CONSTANTA	606835	100,0	84353	13,9	487356	80,3	35126	5,8
COVASNA	121875	100,0	17546	14,4	98303	80,7	6026	4,9
DAMBOVITA	206074	100,0	38051	18,5	149520	72,6	18503	9,0
DOLJ	381774	100,0	53728	14,1	307414	80,5	20632	5,4
GALATI	362869	100,0	48479	13,4	294421	81,1	19969	5,5
GIURGIU	112533	100,0	17092	15,2	88178	78,4	7263	6,5
GORJ	218145	100,0	24109	11,1	184482	84,6	9554	4,4
HARGHITA	213446	100,0	31850	14,9	171315	80,3	10281	4,8
HUNEDOARA	286966	100,0	41352	14,4	228106	79,5	17508	6,1
IALOMITA	131991	100,0	19047	14,4	103624	78,5	9320	7,1
IASI	473149	100,0	67888	14,3	382511	80,8	22750	4,8
MARAMURES	303990	100,0	51481	16,9	229629	75,5	22880	7,5
MEHEDINTI	145162	100,0	22710	15,6	112084	77,2	10368	7,1
MURES	395680	100,0	50958	12,9	324222	81,9	20500	5,2
NEAMT	304965	100,0	43531	14,3	241648	79,2	19786	6,5
OLT	171307	100,0	28185	16,5	130698	76,3	12424	7,3
PRAHOVA	483644	100,0	68269	14,1	388913	80,4	26462	5,5
SALAJ	126027	100,0	20400	16,2	97455	77,3	8172	6,5
SATU MARE	221981	100,0	34681	15,6	172609	77,8	14691	6,6
SIBIU	307689	100,0	40201	13,1	254803	82,8	12685	4,1
SUCEAVA	338184	100,0	50427	14,9	263176	77,8	24581	7,3
TELEORMAN	152966	100,0	23467	15,3	120715	78,9	8784	5,7
TIMIS	471170	100,0	72495	15,4	376793	80,0	21882	4,6
TULCEA	169133	100,0	20784	12,3	139231	82,3	9118	5,4
VASLUI	178259	100,0	25371	14,2	140419	78,8	12469	7,0
VALCEA	219170	100,0	32883	15,0	171138	78,1	15149	6,9
VRANCEA	174641	100,0	24879	14,2	142036	81,3	7726	4,4
MUN. BUCURESTI	2831070	100,0	379973	13,4	2307771	81,5	143326	5,1
ILFOV	230276	100,0	39642	17,2	180532	78,4	10102	4,4

Table no.3

**Number and structure of incorporations in the trade registers during December 1990
- August 2010**

Period (year, month)	Registered companies		Percentage	
	No.	%	%	
0	1	2	3	
Total, 30 August 2010, out of which	2041400	100,00		
Year 1990	81	0,00		
Year 1991	95840	4,69		
Year 1992	137456	6,73		
Year 1993	117078	5,74		
Year 1994	137445	6,73		
Year 1995	65479	3,21		
Year 1996	62089	3,04		
Year 1997	55663	2,73		
Year 1998	63878	3,13		
Year 1999	57197	2,80		
Year 2000	57268	2,81		
Year 2001	61265	3,00		
Year 2002	84780	4,15		
Year 2003	123582	6,05		
Year 2004	144284	7,07		
Year 2005	159464	7,81		
Year 2006	135371	6,63		
Year 2007	144728	7,09		
Year 2008	144173	7,06		
Year 2009	116037	5,68		
Year 2010 (I - XII) out of which :	78248		100,0	
January	7739		9,9	
February	9623		12,3	
March	11893		15,2	
April	10273		13,1	
May	11306		14,5	
June	10197		13,0	
July	8934		11,4	
August	8283		10,6	

Note: Column 2 reveals the annual structure of incorporations; column 3 reveals the structure by months during the current year.

Diagram no.1

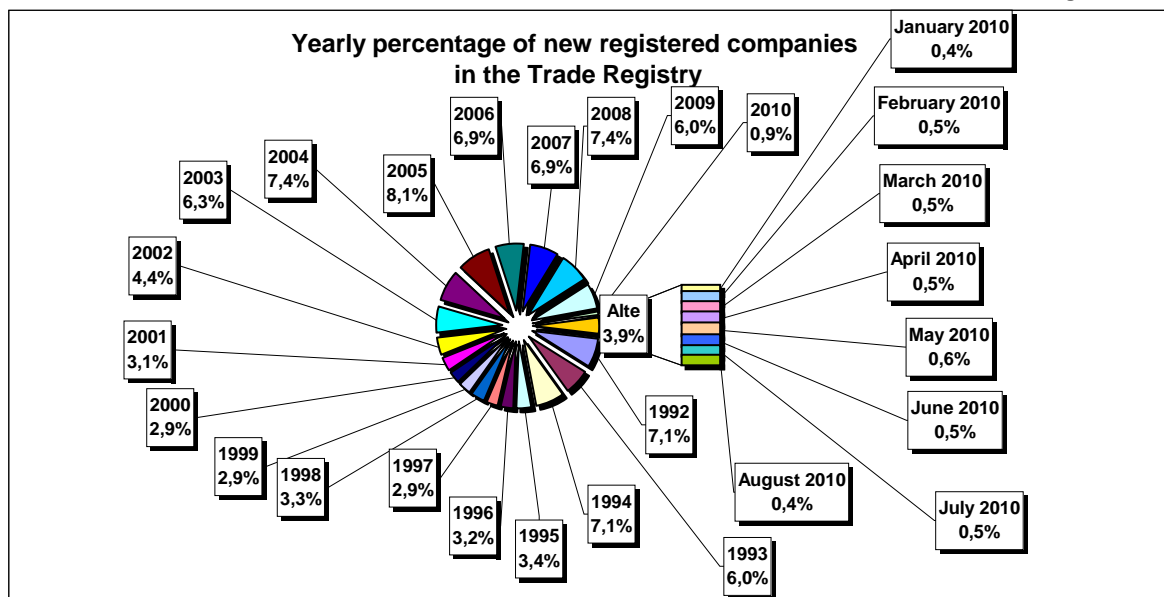


Table no. 4

**Number of incorporations in the trade registers by counties and capital sources during
December 1990 - August 2010**

Counties	Total		out of which:						Ranking by: *	
			Private capital				State majority capital			Mixed capital (state+private)
			out of which:				out of which:			
			PF	Companies	SC	APJ	RA	Companies		Companies
No.	%	No.	No.	No.	No.	No.	No.			
0	1	2	3	4	5	6	7	8	9	
Total ROMÂNIA	2041400	100,0	585722	1435474	2039	5702	1390	2409	8671	X
ALBA	33051	1,6	12555	20057	36	148	38	47	170	24
ARAD	49757	2,4	19609	29511	60	170	30	42	336	15
ARGES	52084	2,6	17526	34124	48	174	29	30	153	10
BACAU	50887	2,5	18191	32080	151	161	35	44	226	13
BIHOR	63353	3,1	18066	44661	63	152	40	62	309	8
BISTRITA-NASAUD	25379	1,2	9705	15363	46	99	28	29	109	29
BOTOSANI	24980	1,2	12059	12388	40	177	21	176	119	31
BRASOV	63534	3,1	15563	47480	58	125	49	87	172	7
BRAILA	28508	1,4	8686	19438	42	100	30	45	167	27
BUZAU	36792	1,8	11641	24751	46	153	28	42	131	22
CARAS-SEVERIN	24608	1,2	8861	15355	42	108	39	65	138	33
CALARASI	20655	1,0	6785	13562	22	91	18	77	100	38
CLUJ	93979	4,6	26297	67104	62	158	52	42	264	2
CONSTANTA	84353	4,1	18187	65224	87	210	51	51	543	3
COVASNA	17546	0,9	6886	10384	41	70	24	32	109	41
DAMBOVITA	38051	1,9	17806	19813	32	139	30	75	156	21
DOLJ	53728	2,6	12998	40220	39	169	40	58	204	9
GALATI	48479	2,4	12016	36064	35	140	30	51	143	16
GIURGIU	17092	0,8	4312	12438	15	84	23	110	110	42
GORJ	24109	1,2	6689	16976	26	184	51	83	100	34
HARGHITA	31850	1,6	14212	17183	64	92	24	43	232	26
HUNEDOARA	41352	2,0	11928	28884	33	84	42	95	286	18
IALOMITA	19047	0,9	7519	11266	27	83	15	46	91	40
IASI	67888	3,3	22501	44679	87	169	34	76	344	6
MARAMURES	51481	2,5	21518	29590	43	128	38	41	124	11
MEHEDINTI	22710	1,1	8212	14246	19	88	19	27	99	36
MURES	50958	2,5	20105	30393	68	159	30	34	169	12
NEAMT	43531	2,1	16735	26339	66	165	30	30	166	17
OLT	28185	1,4	11177	16602	27	166	26	64	123	28
PRAHOVA	68269	3,3	22866	44754	67	184	52	74	272	5
SALAJ	20400	1,0	8521	11617	41	110	19	28	64	39
SATU MARE	34681	1,7	12371	21976	41	98	20	42	134	23
SIBIU	40201	2,0	11769	27969	37	121	34	110	161	19
SUCEAVA	50427	2,5	24317	25509	73	209	31	67	221	14
TELEORMAN	23467	1,1	8667	14353	33	163	21	46	184	35
TIMIS	72495	3,6	13969	57845	69	154	38	69	351	4
TULCEA	20784	1,0	7827	12581	36	67	19	42	212	37
VASLUI	25371	1,2	12578	12466	22	112	16	41	136	30
VALCEA	32883	1,6	13702	18749	64	171	42	40	115	25
VRANCEA	24879	1,2	8220	16351	35	115	17	27	114	32
MUN. BUCURESTI	379973	18,6	36894	341499	64	154	116	106	1141	1
ILFOV	39642	1,9	5676	33630	31	98	21	13	173	20

*) The total number of incorporations (col 1)

Table no. 5

**Number of incorporations in the trade registers by counties and business categories
during December 1990 – August 2010**

County	Total		out of which:							
			PF	companies: 1446554				RA	SC	APJ
	SNC	SCS		SRL	SA					
	No.	%	No.	No.	No.	No.	No.	No.	No.	
0	1	2	3	4	5	6	7	8	9	10
Total ROMÂNIA	2041400	100,0	585722	32680	1618	1378389	33860	1390	2039	5702
ALBA	33051	1,6	12555	890	11	18798	575	38	36	148
ARAD	49757	2,4	19609	54	13	29117	704	30	60	170
ARGES	52084	2,6	17526	107	15	33344	841	29	48	174
BACAU	50887	2,5	18191	1299	4	30295	751	35	151	161
BIHOR	63353	3,1	18066	127	48	43925	932	40	63	152
BISTRITA-NASAUD	25379	1,2	9705	146	22	14910	423	28	46	99
BOTOSANI	24980	1,2	12059	468	1	11753	461	21	40	177
BRASOV	63542	3,1	15563	239	21	46594	893	49	58	125
BRAILA	28500	1,4	8686	376	12	18717	537	30	42	100
BUZAU	36792	1,8	11641	3747	46	20537	594	28	46	153
CARAS-SEVERIN	24608	1,2	8861	118	9	14956	475	39	42	108
CALARASI	20655	1,0	6785	609	3	12765	362	18	22	91
CLUJ	93979	4,6	26297	2112	21	63924	1353	52	62	158
CONSTANTA	84353	4,1	18187	311	23	63958	1526	51	87	210
COVASNA	17546	0,9	6886	148	4	10063	310	24	41	70
DAMBOVITA	38051	1,9	17806	60	8	19471	505	30	32	139
DOLJ	53728	2,6	12998	1560	8	37999	915	40	39	169
GALATI	48479	2,4	12016	1574	6	33812	866	30	35	140
GIURGIU	17092	0,8	4312	35	8	12283	332	23	15	84
GORJ	24109	1,2	6689	29	1	16622	507	51	26	184
HARGHITA	31850	1,6	14212	62	7	16887	502	24	64	92
HUNEDOARA	41352	2,0	11928	1166	98	27305	696	42	33	84
IALOMITA	19047	0,9	7519	269	12	10767	355	15	27	83
IASI	67888	3,3	22501	508	111	43436	1042	34	87	169
MARAMURES	51481	2,5	21518	1927	23	27194	610	38	43	128
MEHEDINTI	22710	1,1	8212	427	3	13598	344	19	19	88
MURES	50958	2,5	20105	37	34	29840	685	30	68	159
NEAMT	43531	2,1	16735	3293	30	22525	687	30	66	165
OLT	28185	1,4	11177	1611	1	14672	505	26	27	166
PRAHOVA	68269	3,3	22866	3122	15	41026	937	52	67	184
SALAJ	20400	1,0	8521	600	4	10804	301	19	41	110
SATU MARE	34681	1,7	12371	283	9	21378	481	20	41	98
SIBIU	40201	2,0	11769	778	49	26732	681	34	37	121
SUCEAVA	50427	2,5	24317	438	8	24749	602	31	73	209
TELEORMAN	23467	1,1	8667	272	399	13476	436	21	33	163
TIMIS	72495	3,6	13969	616	34	56322	1293	38	69	154
TULCEA	20784	1,0	7827	1363	114	10873	485	19	36	67
VASLUI	25371	1,2	12578	90	13	12115	425	16	22	112
VALCEA	32883	1,6	13702	364	6	18026	508	42	64	171
VRANCEA	24879	1,2	8220	356	10	15660	466	17	35	115
MUN. BUCURESTI	379973	18,6	36894	1039	321	334115	7270	116	64	154
ILFOV	39642	1,9	5676	50	33	33046	687	21	31	98

Table no. 6

Operations performed in the trade registers by counties and categories of registration in the month of August 2010

County	Total of operations carried on		out of which:					
			New incorporations		Changes in statutory documents		Strike off companies	
	No.	%	No.	%	No.	%	No.	%
0	1	2	3	4	5	6	9	10
Total ROMÂNIA	89705	100,0	8283	9,2	58991	65,8	22431	25,0
ALBA	3733	100,0	212	5,7	604	16,2	2917	78,1
ARAD	1433	100,0	191	13,3	1049	73,2	193	13,5
ARGES	2542	100,0	254	10,0	1112	43,7	1176	46,3
BACAU	1605	100,0	223	13,9	1171	73,0	211	13,1
BIHOR	2037	100,0	255	12,5	1677	82,3	105	5,2
BISTRITA-NASAUD	893	100,0	178	19,9	691	77,4	24	2,7
BOTOSANI	2958	100,0	103	3,5	1964	66,4	891	30,1
BRASOV	2307	100,0	217	9,4	1695	73,5	395	17,1
BRAILA	934	100,0	108	11,6	729	78,1	97	10,4
BUZAU	943	100,0	150	15,9	723	76,7	70	7,4
CARAS-SEVERIN	1859	100,0	79	4,2	432	23,2	1348	72,5
CALARASI	3044	100,0	115	3,8	397	13,0	2532	83,2
CLUJ	3300	100,0	312	9,5	2742	83,1	246	7,5
CONSTANTA	3388	100,0	331	9,8	2902	85,7	155	4,6
COVASNA	550	100,0	62	11,3	428	77,8	60	10,9
DAMBOVITA	780	100,0	162	20,8	552	70,8	66	8,5
DOLJ	2041	100,0	230	11,3	1733	84,9	78	3,8
GALATI	3464	100,0	230	6,6	1331	38,4	1903	54,9
GIURGIU	555	100,0	90	16,2	408	73,5	57	10,3
GORJ	694	100,0	132	19,0	494	71,2	68	9,8
HARGHITA	923	100,0	119	12,9	696	75,4	108	11,7
HUNEDOARA	1127	100,0	160	14,2	921	81,7	46	4,1
IALOMITA	453	100,0	79	17,4	343	75,7	31	6,8
IASI	2006	100,0	300	15,0	1566	78,1	140	7,0
MARAMURES	6716	100,0	175	2,6	1866	27,8	4675	69,6
MEHEDINTI	495	100,0	111	22,4	351	70,9	33	6,7
MURES	1890	100,0	196	10,4	1431	75,7	263	13,9
NEAMT	1125	100,0	124	11,0	938	83,4	63	5,6
OLT	530	100,0	116	21,9	384	72,5	30	5,7
PRAHOVA	4489	100,0	265	5,9	1393	31,0	2831	63,1
SALAJ	876	100,0	86	9,8	708	80,8	82	9,4
SATU MARE	924	100,0	127	13,7	720	77,9	77	8,3
SIBIU	1904	100,0	141	7,4	1615	84,8	148	7,8
SUCEAVA	1302	100,0	177	13,6	1035	79,5	90	6,9
TELEORMAN	3621	100,0	122	3,4	3403	94,0	96	2,7
TIMIS	2505	100,0	293	11,7	2040	81,4	172	6,9
TULCEA	689	100,0	103	14,9	559	81,1	27	3,9
VASLUI	617	100,0	85	13,8	519	84,1	13	2,1
VALCEA	904	100,0	122	13,5	724	80,1	58	6,4
VRANCEA	602	100,0	79	13,1	491	81,6	32	5,3
MUN. BUCURESTI	15318	100,0	1366	8,9	13197	86,2	755	4,9
ILFOV	1629	100,0	303	18,6	1257	77,2	69	4,2

*) by effect of implementation of Law no. 314/2001, art.1 and art. 6

Table no.7

Number of incorporations in the trade registers by counties and capital sources in the month of August 2010

County	Total		out of which:						Ranking by: *	
			Private capital				State majority capital			Mixed capital (state+private)
			out of which:				out of which:			Companies
			PF	Companies	SC	APJ	RA	Companies		Companies
No.	%	No.	No.	No.		No.	No.	No.		
0	1	2	3	4	5	6	7	8	9	
Total ROMÂNIA	8283	100,0	4381	3887		3		8	4	X
ALBA	212	2,6	149	63						14
ARAD	191	2,3	124	67						16
ARGES	254	3,1	144	110						9
BACAU	223	2,7	140	82				1		12
BIHOR	255	3,1	154	101						8
BISTRITA-NASAUD	178	2,1	152	26						17
BOTOSANI	103	1,2	70	33						34
BRASOV	217	2,6	126	91						13
BRAILA	108	1,3	66	42						33
BUZAU	150	1,8	75	75						22
CARAS-SEVERIN	79	1,0	42	37						39
CALARASI	115	1,4	83	32						31
CLUJ	312	3,8	151	161						3
CONSTANTA	331	4,0	145	186						2
COVASNA	62	0,7	48	14						42
DAMBOVITA	162	2,0	124	38						20
DOLJ	230	2,8	121	108					1	10
GALATI	230	2,8	133	97						11
GIURGIU	90	1,1	42	47				1		36
GORJ	132	1,6	86	46						24
HARGHITA	119	1,4	90	29						29
HUNEDOARA	160	1,9	94	66						21
IALOMITA	79	1,0	46	33						40
IASI	300	3,6	174	124				2		5
MARAMURES	175	2,1	108	67						19
MEHEDINTI	111	1,3	80	30					1	32
MURES	196	2,4	123	73						15
NEAMT	124	1,5	78	46						26
OLT	116	1,4	60	56						30
PRAHOVA	265	3,2	146	119						7
SALAJ	86	1,0	55	31						37
SATU MARE	127	1,5	64	63						25
SIBIU	141	1,7	85	55				1		23
SUCEAVA	177	2,1	126	49				2		18
TELEORMAN	122	1,5	60	59		1			2	27
TIMIS	293	3,5	109	184						6
TULCEA	103	1,2	67	36						35
VASLUI	85	1,0	62	23						38
VALCEA	122	1,5	80	40		1		1		28
VRANCEA	79	1,0	49	29		1				41
MUN. BUCURESTI	1366	16,5	376	990						1
ILFOV	303	3,7	74	229						4

*) The total number of incorporations (col 1)

*** Less than 0,01%

Table no.8

**Number of incorporations in the trade registers by counties and
business categories in the month of August 2010**

County	Total		out of which:						RA	SC	APJ
			PF	companies: 3899							
	SNC	SCS		SRL	SA						
	No.	%	No.	No.	No.	No.	No.	No.			
0	1	2	3	4	5	6	7	8	9		
Total ROMÂNIA	8283	100,0	4381			3867	32			3	
ALBA	212	2,6	149			62	1				
ARAD	191	2,3	124			66	1				
ARGES	254	3,1	144			110					
BACAU	223	2,7	140			81	2				
BIHOR	255	3,1	154			101					
BISTRITA-NASAUD	178	2,1	152			26					
BOTOSANI	103	1,2	70			33					
BRASOV	217	2,6	126			91					
BRAILA	108	1,3	66			42					
BUZAU	150	1,8	75			75					
CARAS-SEVERIN	79	1,0	42			37					
CALARASI	115	1,4	83			32					
CLUJ	312	3,8	151			161					
CONSTANTA	331	4,0	145			186					
COVASNA	62	0,7	48			14					
DAMBOVITA	162	2,0	124			38					
DOLJ	230	2,8	121			107	2				
GALATI	230	2,8	133			97					
GIURGIU	90	1,1	42			47	1				
GORJ	132	1,6	86			45	1				
HARGHITA	119	1,4	90			28	1				
HUNEDOARA	160	1,9	94			66					
IALOMITA	79	1,0	46			33					
IASI	300	3,6	174			122	4				
MARAMURES	175	2,1	108			66	1				
MEHEDINTI	111	1,3	80			30	1				
MURES	196	2,4	123			72	1				
NEAMT	124	1,5	78			46					
OLT	116	1,4	60			56					
PRAHOVA	265	3,2	146			119					
SALAJ	86	1,0	55			30	1				
SATU MARE	127	1,5	64			63					
SIBIU	141	1,7	85			55	1				
SUCEAVA	177	2,1	126			48	3				
TELEORMAN	122	1,5	60			59	2			1	
TIMIS	293	3,5	109			183	1				
TULCEA	103	1,2	67			36					
VASLUI	85	1,0	62			23					
VALCEA	122	1,5	80			40	1			1	
VRANCEA	79	1,0	49			29				1	
MUN. BUCURESTI	1366	16,5	376			983	7				
ILFOV	303	3,7	74			229					

Table no. 9

**Number of incorporations in the trade registers by domains of activity and business categories in
the month of August 2010**

CAEN seg.	Field of activity	Total		out of which:							
				PF	companies: 3899				RA	SC	APJ
		SNC	SCS		SRL	SA					
0	1	No.	%	No.	No.	No.	No.	No.	No.	No.	
	Total ROMÂNIA	8283	100,0	4381			3867	32			3
1	Agriculture, hunting and related service activities	655	7,9	581			72				2
2	Forestry and logging	44	0,5	12			31	1			
3	Fishing and aquaculture	47	0,6	37			10				
5	Mining of hard and brown coal	2	0,0				2				
6	Extraction of crude petroleum and natural gas										
7	Mining of metal ores										
8	Other mining and quarrying	5	0,1				5				
9	Mining support service activities	2	0,0				2				
10	Manufacture of food products	102	1,2	45			57				
11	Manufacture of beverages	20	0,2	16			4				
12	Manufacture of tobacco products										
13	Manufacture of textiles	12	0,1	4			8				
14	Manufacture of wearing apparel	52	0,6	24			28				
15	Tanning and dressing of leather; manufacture of luggage, handbags, saddlery, harness and footwear; dressing and dyeing of fur	15	0,2	3			12				
16	Manufacture of wood and of products of wood and cork, except furniture; manufacture of articles of straw and plaiting materials	67	0,8	40			27				
17	Manufacture of paper and paper products	7	0,1	3			4				
18	Printing and reproduction of recorded media	14	0,2	5			9				
19	Manufacture of coke and refined petroleum products	2	0,0				2				
20	Manufacture of chemicals and chemical products	7	0,1	1			6				
21	Manufacture of basic pharmaceutical products and pharmaceutical preparations										
22	Manufacture of rubber and plastic products	16	0,2	7			9				
23	Manufacture of other non-metallic mineral products	22	0,3	10			12				
24	Manufacture of basic metals	3	0,0	1			2				
25	Manufacture of fabricated metal products, except machinery and equipment	84	1,0	50			34				
26	Manufacture of computer, electronic and optical products	4	0,0	1			3				
27	Manufacture of electrical equipment	1	0,0				1				
28	Manufacture of machinery and equipment n.e.c.	5	0,1				5				
29	Manufacture of motor vehicles, trailers and semi-trailers	2	0,0				2				
30	Manufacture of other transport equipment	6	0,1				6				
31	Manufacture of furniture	30	0,4	15			15				
32	Other manufacturing	27	0,3	18			9				
33	Repair and installation of machinery and equipment	17	0,2	11			6				
35	Electricity, gas, steam and air conditioning supply	40	0,5				36	4			
36	Water collection, treatment and supply	25	0,3				24	1			
37	Sewerage	5	0,1	2			3				
38	Waste collection, treatment and disposal activities; materials recovery	68	0,8	7			55	6			
39	Remediation activities and other waste management services	2	0,0				2				
41	Construction of buildings	284	3,4	67			216	1			
42	Civil engineering	27	0,3	2			24	1			
43	Specialised construction activities	280	3,4	143			137				
45	Wholesale and retail trade and repair of motor vehicles and motorcycles	219	2,6	78			140	1			
46	Wholesale trade, except of motor vehicles and motorcycles	762	9,2	191			569	1			1
47	Retail trade, except of motor vehicles and motorcycles	1964	23,7	1298			666				
49	Land transport and transport via pipelines	435	5,3	188			247				
50	Water transport	3	0,0	1			2				

Table no. 10

Number of incorporated trading companies and the value of the subscribed share capital, by counties, in the month of August 2010

County	Total registered companies		Subscribed capital		Average subscribed capital on company
	No.	%	thousand Lei	%	thousand Lei
0	1	2	3	4	5
Total ROMÂNIA	3899	100,0	213181,7	100,0	54,8
ALBA	63	1,6	500,4	0,2	8,1
ARAD	67	1,7	61,8	0,0	1,0
ARGES	110	2,8	1057,5	0,5	9,6
BACAU	83	2,1	1717,1	0,8	20,7
BIHOR	101	2,6	69,4	0,0	0,7
BISTRITA-NASAUD	26	0,7	1064,9	0,5	41,0
BOTOSANI	33	0,8	14,1	***	0,4
BRASOV	91	2,3	4359,1	2,0	47,9
BRAILA	42	1,1	9,3	***	0,2
BUZAU	75	1,9	128,3	0,1	1,7
CARAS-SEVERIN	37	0,9	361,8	0,2	9,8
CALARASI	32	0,8	17,1	***	0,5
CLUJ	161	4,1	152,2	0,1	1,0
CONSTANTA	186	4,8	138,4	0,1	0,7
COVASNA	14	0,4	90,9	0,0	6,5
DAMBOVITA	38	1,0	83,7	0,0	2,2
DOLJ	109	2,8	529,8	0,2	4,9
GALATI	97	2,5	1373,7	0,6	14,2
GIURGIU	48	1,2	118,1	0,1	2,5
GORJ	46	1,2	2119,3	1,0	46,1
HARGHITA	29	0,7	457,2	0,2	16,3
HUNEDOARA	66	1,7	5,5	***	0,1
IALOMITA	33	0,8	12,8	***	0,4
IASI	126	3,2	465,6	0,2	3,7
MARAMURES	67	1,7	949,3	0,4	14,4
MEHEDINTI	31	0,8	115,1	0,1	3,7
MURES	73	1,9	278,3	0,1	3,9
NEAMT	46	1,2	431,7	0,2	9,4
OLT	56	1,4	26,1	0,0	0,5
PRAHOVA	119	3,1	5681,6	2,7	47,7
SALAJ	31	0,8	1096,9	0,5	35,4
SATU MARE	63	1,6	868,3	0,4	13,8
SIBIU	56	1,4	372,6	0,2	6,7
SUCEAVA	51	1,3	886,9	0,4	17,4
TELEORMAN	61	1,6	716,6	0,3	11,7
TIMIS	184	4,7	24427,4	11,5	132,8
TULCEA	36	0,9	55,0	0,0	1,5
VASLUI	23	0,6	2064,3	1,0	89,8
VALCEA	41	1,1	667,3	0,3	16,3
VRANCEA	29	0,7	9,0	***	0,3
MUN. BUCURESTI	990	25,4	22067,8	10,4	22,3
ILFOV	229	5,9	137559,8	64,5	600,7

Note: The average does not include filials because according to the

*** Less than 0,01%

Law no.31/1990 they are not juridical persons

Table no. 11

Number of incorporated trading companies and the value of the subscribed share capital by legal forms, in the month of August 2010

Company type	Total registered companies		Subscribed capital		Average subscribed capital on company
	No.	%	thousand Lei	%	thousand Lei
0	1	2	3	4	5
Total ROMÂNIA	3899	100,0	213181,7	100,0	54,8
SNC					
SCS					
SA	32	0,8	5603,9	2,6	200,1
SRL	3867	99,2	207577,8	97,4	53,8

Note: The average does not include filials because according to the Law no.31/1990 they are not juridical persons

*** Less than 0,01%

Diagram no.5

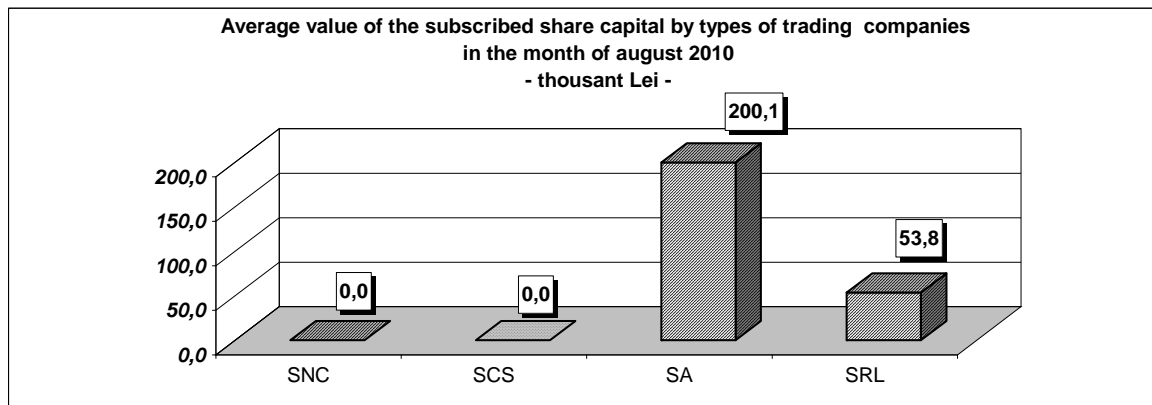


Table no. 10

Number of incorporated trading companies and the value of the subscribed share capital, by counties, in the month of June 2010

County	Total registered companies		Subscribed capital		Average subscribed capital on company
	No.	%	thousand Lei	%	thousand Lei
0	1	2	3	4	5
Total ROMÂNIA	4159	100,0	556365,0	100,0	134,3
ALBA	65	1,6	592,4	0,1	9,1
ARAD	81	1,9	480,5	0,1	5,9
ARGES	100	2,4	91,4	0,0	0,9
BACAU	72	1,7	165,7	0,0	2,3
BIHOR	139	3,3	120,1	0,0	0,9
BISTRITA-NASAUD	24	0,6	37,1	***	1,6
BOTOSANI	31	0,7	28,1	***	0,9
BRASOV	132	3,2	855,2	0,2	6,5
BRAILA	76	1,8	17,6	***	0,2
BUZAU	67	1,6	147,7	0,0	2,2
CARAS-SEVERIN	33	0,8	17,7	***	0,5
CALARASI	35	0,8	206,9	0,0	5,9
CLUJ	173	4,2	10749,5	1,9	62,1
CONSTANTA	196	4,7	113,8	0,0	0,6
COVASNA	23	0,6	96,3	0,0	4,4
DAMBOVITA	68	1,6	3361,3	0,6	49,4
DOLJ	116	2,8	827,9	0,1	7,1
GALATI	97	2,3	39,6	***	0,4
GIURGIU	59	1,4	461,9	0,1	8,0
GORJ	30	0,7	30,8	***	1,0
HARGHITA	28	0,7	9,3	***	0,3
HUNEDOARA	74	1,8	68,7	0,0	0,9
IALOMITA	47	1,1	375,6	0,1	8,0
IASI	145	3,5	8033,3	1,4	56,2
MARAMURES	62	1,5	86,5	0,0	1,4
MEHEDINTI	28	0,7	9721,5	1,7	347,2
MURES	70	1,7	50,9	***	0,7
NEAMT	77	1,9	136,4	0,0	1,8
OLT	46	1,1	163,0	0,0	3,5
PRAHOVA	135	3,2	2856,2	0,5	21,3
SALAJ	36	0,9	150,7	0,0	4,2
SATU MARE	57	1,4	2283,9	0,4	40,1
SIBIU	61	1,5	21,4	***	0,4
SUCEAVA	54	1,3	567,7	0,1	10,5
TELEORMAN	67	1,6	951,1	0,2	14,2
TIMIS	177	4,3	771,2	0,1	4,4
TULCEA	49	1,2	113,0	0,0	2,4
VASLUI	22	0,5	10,7	***	0,5
VALCEA	35	0,8	8,2	***	0,2
VRANCEA	46	1,1	11,5	***	0,2
MUN. BUCURESTI	967	23,3	443953,5	79,8	462,0
ILFOV	259	6,2	67579,0	12,1	260,9

Note: The average does not include filials because according to the Law no.31/1990 they are not juridical persons

**** Less than 0,01%*

