



MINISTRY OF JUSTICE

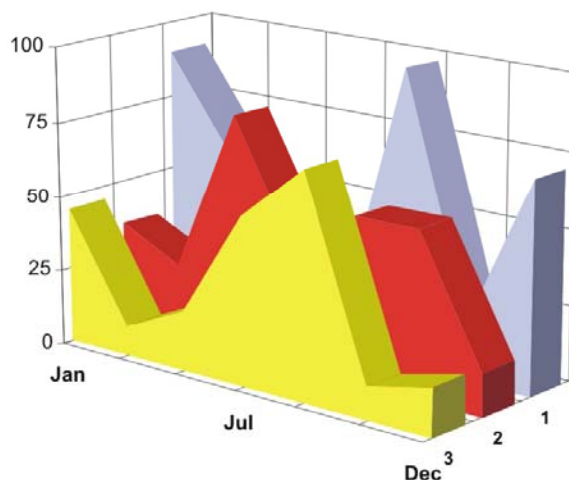
THE NATIONAL TRADE REGISTER OFFICE

București, Bd. Unirii nr. 74, Bl. J3b, tronson II+III, sector 3; Telefon: +40 21 316.08.04, 316.08.10; Fax: +40 21 316.08.03; Cod poștal: 030837  
Website: [www.onrc.ro](http://www.onrc.ro); E-mail: [onrc@onrc.ro](mailto:onrc@onrc.ro); Cod Identificare Fiscală: 14942091

# OPERATIONS IN THE CENTRAL TRADE REGISTER

## STATISTIC SYNTHESIS

### OF RECORDS IN THE CENTRAL TRADE REGISTER - 31<sup>th</sup> July 2010 - provisional data -



- ISSUE No. 224 -

## MINISTRY OF JUSTICE THE NATIONAL TRADE REGISTER OFFICE

- Operations such as incorporation of trading companies, submission of changes, and strike-off are carried out based on Law No.26/1990, as republished, Law No.31/1990, as republished and on the Methodological Norms no. P/608/1998.
- This work reflects the evolution of the operations with the Trade Register Office attached to Bucharest Law Court and the Trade Register Offices attached to County Law Courts.
- The data contained in the Central Trade Register refer to operations for which law sets out the obligation of being registered in the trade registers kept by the 42 trade register offices attached to law courts.

*• The content of this publication shall not be reproduced, partly or entirely, in original or modified form, and shall not be stored in a recovery system and shall not be transmitted in any form or by any means without prior written authorization of the Ministry of Justice – The National Trade Register Office.*

*• The content of this publication December be used in articles, studies, books, as supporting or explanatory data only by clearly and accurately indicating the source.*

<b>CONTENTS</b>		Page
<b>1</b>	<b>Definitions</b>	<b>1</b>
<hr/>		
<b>2.1</b>	<b>Data related to the period December 1990 –July 2010</b>	<b>3</b>
<hr/>		
	<b>Table no. 1 – Operations performed in the trade registers by categories of registration during December 1990 –July 2010, total by country and by counties, shares of counties in the total by country</b>	3
	<b>Table no. 2 – Operations performed in the trade registers by categories of registration during 1990 –July 2010, total by country and counties, share of categories of operations in the total of each county</b>	4
	<b>Table no. 3 – Number and structure of incorporations in the trade registers during 1990- July 2010</b>	5
	<b>Chart no. 1 – Structure by years of incorporations in the trade register</b>	
	<b>Table no. 4 – Number of incorporations in the trade registers by counties and capital sources during 1990 - July 2010</b>	6
	<b>Table no. 5 – Number of incorporations in the trade registers by counties and business categories during 1990 –July 2010</b>	7
<hr/>		
<b>2.2</b>	<b>Data related to July 2010</b>	<b>8</b>
<hr/>		
	<b>Table no. 6 – Operations performed in the trade registers by counties and categories of registrations in the month of July 2010</b>	8
	<b>Table no. 7 – Number of incorporations in the trade registers by counties and capital sources in the month of July 2010</b>	9
	<b>Table no. 8 – Number of incorporations in the trade registers by counties and business categories in the month of July 2010</b>	10
	<b>Table no. 9 –Number of incorporations in the trade registers by domains of activity and business categories in the month of July 2010</b>	11-12
	<b>Table no. 10 – Number of incorporated trading companies and the value of subscribed share capital, by counties, in the month of July 2010</b>	13
	<b>Table no. 11– Number of incorporated trading companies and the value of subscribed share capital by legal forms, in the month of July 2010</b>	14
	<b>Chart no. 5 – Average value of subscribed share capital by types of trading companies in the month of July 2010</b>	14

## Definitions

The Trade Register Office was established based on Law No. 26/1990, as republished and subsequently amended and supplemented, operates as an active institution since 1990 and is twofold structured:

- at national level, represented by the National Trade Register Office organized under the authority of the Ministry of Justice
- at local level, represented by the 42 Trade Register Offices attached to Law Courts, organized under the subordination of the National Trade Register Office

Categories of persons liable to registration in the trade register:

- natural persons: authorized natural persons, individual enterprises and family enterprises currently carrying on trading activities;
  - legal persons represented by: Trading Companies, National Societies and Companies, National R&D Institutes, Autonomous Administrations, Co-operative Societies, Agricultural Co-operatives, Co-operative Organizations, Economic Interest Groupings, European Economic Interest Groupings, European Societies, European Co-operative Societies, branches of trading companies with legal establishment, operation and incorporation regime of trading company legal form under which they were incorporated.
- **Terms used in tables and charts**
    - **Number of companies**, depending on the table, represents the number of trading companies incorporated during the reference period, the number of trading companies struck-off from the trade register. The following forms of organization are included: limited liability companies, joint-stock companies, limited partnerships by share, limited partnerships, general partnerships, and branches thereof.
    - **Value of subscribed share capital:**
      - **total, expressed in national currency:** the share capital value resulted by adding up the subscribed values (in cash and in kind) in national currency (lei)

- **Regions of economic development:**

<i>North-East:</i>	Suceava, Botoșani, Neamț, Iași, Bacău, Vaslui.
<i>South-East:</i>	Vrancea, Galați, Buzău, Brăila, Tulcea, Constanța.
<i>South-Muntenia:</i>	Argeș, Dâmbovița, Prahova, Teleorman, Giurgiu, Călărași, Ialomița.
<i>South-West Oltenia:</i>	Gorj, Vâlcea, Dolj, Mehedinți, Olt.
<i>West:</i>	Arad, Caraș-Severin, Hunedoara, Timiș.
<i>North-West:</i>	Bihor, Bistrița, Cluj, Satu Mare, Sălaj, Maramureș.
<i>Center:</i>	Alba, Brașov, Covasna, Harghita, Mureș, Sibiu.
<i>Bucharest-Ilfov:</i>	București, Ilfov.

NACE Code – The classification of economic activities in the national economy was approved by GO No. 656/1997, amended by Order No 601/2002 and Order no. 337/2007 of the President of the National Institute of Statistics, and complies with the international classification used in statistic reports and official documents. The activities are ranked by the harmonization principle, by sections, divisions, groups and classes.

### Abbreviations

- **PF** - Natural Person; the following forms of organization are included in this category: natural persons and family associations registered until 25.04.2008, authorized natural persons, individual enterprises and family enterprises.
- **SNC** - General Partnership
- **SCS** - Limited Partnership
- **SCA** - Limited Partnership by Share
- **SA** - Joint-Stock Company
- **SRL** - Limited Liability Company
- **RA** - Autonomous Administration
- **APJ** - Other legal persons having the obligation to register in the trade register: National R&D Institutes, Economic Interest Groupings, European Economic Interest Groupings, European Societies, European Co-operative Societies, Agricultural Co-operatives, Co-operative Organizations.

### Sources of Information:

The integrated IT system of the trade register is designed by The National Trade Register Office in compliance with the provisions of the related legislation in force. The source of information consists of the trade registers organized in computerized system, kept by the trade register offices attached to law courts.

Table no. 1

**Operations performed in the trade registers by categories of registration during  
December 1990 – July 2010, total by country and by counties, share of counties in  
the total by country**

Counties	Total of registered operations		out of which :					
			Registered companies		Changes in statutory documents		Strike off companies	
	No.	%	No.	%	No.	%	No.	%
0	1	2	3	4	7	8	11	12
<b>Total ROMÂNIA</b>	<b>14183294</b>	<b>100,0</b>	<b>2033117</b>	<b>100,0</b>	<b>11377002</b>	<b>100,0</b>	<b>773175</b>	<b>100,0</b>
ALBA	214754	1,5	32839	1,6	170642	1,5	11273	1,5
ARAD	335684	2,4	49566	2,4	266519	2,3	19599	2,5
ARGES	344087	2,4	51830	2,5	276621	2,4	15636	2,0
BACAU	329873	2,3	50673	2,5	257568	2,3	21632	2,8
BIHOR	431473	3,0	63098	3,1	347154	3,1	21221	2,7
BISTRITA-NASAUD	170556	1,2	25201	1,2	135234	1,2	10121	1,3
BOTOSANI	130357	0,9	24877	1,2	96265	0,8	9215	1,2
BRASOV	556570	3,9	63325	3,1	472087	4,1	21158	2,7
BRAILA	218355	1,5	28392	1,4	181919	1,6	8044	1,0
BUZAU	246497	1,7	36642	1,8	194195	1,7	15660	2,0
CARAS-SEVERIN	165542	1,2	24529	1,2	129376	1,1	11637	1,5
CALARASI	130362	0,9	20540	1,0	101212	0,9	8610	1,1
CLUJ	626001	4,4	93667	4,6	503113	4,4	29221	3,8
CONSTANTA	603378	4,3	84022	4,1	484454	4,3	34902	4,5
COVASNA	121329	0,9	17484	0,9	97875	0,9	5970	0,8
DAMBOVITA	205281	1,4	37889	1,9	148968	1,3	18424	2,4
DOLJ	379673	2,7	53498	2,6	305681	2,7	20494	2,7
GALATI	361184	2,5	48249	2,4	293090	2,6	19845	2,6
GIURGIU	111987	0,8	17002	0,8	87770	0,8	7215	0,9
GORJ	217466	1,5	23977	1,2	183988	1,6	9501	1,2
HARGHITA	212539	1,5	31731	1,6	170619	1,5	10189	1,3
HUNEDOARA	285809	2,0	41192	2,0	227185	2,0	17432	2,3
IALOMITA	131527	0,9	18968	0,9	103281	0,9	9278	1,2
IASI	471010	3,3	67588	3,3	380945	3,3	22477	2,9
MARAMURES	301131	2,1	51306	2,5	227763	2,0	22062	2,9
MEHEDINTI	144656	1,0	22599	1,1	111733	1,0	10324	1,3
MURES	393947	2,8	50762	2,5	322791	2,8	20394	2,6
NEAMT	303850	2,1	43407	2,1	240710	2,1	19733	2,6
OLT	170784	1,2	28069	1,4	130314	1,1	12401	1,6
PRAHOVA	481782	3,4	68004	3,3	387520	3,4	26258	3,4
SALAJ	125152	0,9	20314	1,0	96747	0,9	8091	1,0
SATU MARE	221076	1,6	34554	1,7	171889	1,5	14633	1,9
SIBIU	305183	2,2	40060	2,0	253188	2,2	11935	1,5
SUCEAVA	336885	2,4	50250	2,5	262141	2,3	24494	3,2
TELEORMAN	146475	1,0	23345	1,1	117312	1,0	5818	0,8
TIMIS	468598	3,3	72202	3,6	374753	3,3	21643	2,8
TULCEA	168437	1,2	20681	1,0	138672	1,2	9084	1,2
VASLUI	177639	1,3	25286	1,2	139900	1,2	12453	1,6
VALCEA	218237	1,5	32761	1,6	170414	1,5	15062	1,9
VRANCEA	174031	1,2	24800	1,2	141545	1,2	7686	1,0
MUN. BUCURESTI	2815500	19,9	378598	18,6	2294574	20,2	142328	18,4
ILFOV	228636	1,6	39339	1,9	179275	1,6	10022	1,3

Table no. 2

**Operations performed in the trade registers during December 1990 – July 2010,  
total by country and counties, share of categories of operations in the total of  
each county**

Counties	Total of registered operations		out of which :					
			Registered companies		Changes in statutory documents		Strike off companies	
	No.	%	No.	%	No.	%	No.	%
0	1	2	3	4	7	8	11	12
<b>Total ROMÂNIA</b>	<b>14183294</b>	<b>100,0</b>	<b>2033117</b>	<b>14,3</b>	<b>11377002</b>	<b>80,2</b>	<b>773175</b>	<b>5,5</b>
ALBA	214754	100,0	32839	15,3	170642	79,5	11273	5,2
ARAD	335684	100,0	49566	14,8	266519	79,4	19599	5,8
ARGES	344087	100,0	51830	15,1	276621	80,4	15636	4,5
BACAU	329873	100,0	50673	15,4	257568	78,1	21632	6,6
BIHOR	431473	100,0	63098	14,6	347154	80,5	21221	4,9
BISTRITA-NASAUD	170556	100,0	25201	14,8	135234	79,3	10121	5,9
BOTOSANI	130357	100,0	24877	19,1	96265	73,8	9215	7,1
BRASOV	556570	100,0	63325	11,4	472087	84,8	21158	3,8
BRAILA	218355	100,0	28392	13,0	181919	83,3	8044	3,7
BUZAU	246497	100,0	36642	14,9	194195	78,8	15660	6,4
CARAS-SEVERIN	165542	100,0	24529	14,8	129376	78,2	11637	7,0
CALARASI	130362	100,0	20540	15,8	101212	77,6	8610	6,6
CLUJ	626001	100,0	93667	15,0	503113	80,4	29221	4,7
CONSTANTA	603378	100,0	84022	13,9	484454	80,3	34902	5,8
COVASNA	121329	100,0	17484	14,4	97875	80,7	5970	4,9
DAMBOVITA	205281	100,0	37889	18,5	148968	72,6	18424	9,0
DOLJ	379673	100,0	53498	14,1	305681	80,5	20494	5,4
GALATI	361184	100,0	48249	13,4	293090	81,1	19845	5,5
GIURGIU	111987	100,0	17002	15,2	87770	78,4	7215	6,4
GORJ	217466	100,0	23977	11,0	183988	84,6	9501	4,4
HARGHITA	212539	100,0	31731	14,9	170619	80,3	10189	4,8
HUNEDOARA	285809	100,0	41192	14,4	227185	79,5	17432	6,1
IALOMITA	131527	100,0	18968	14,4	103281	78,5	9278	7,1
IASI	471010	100,0	67588	14,3	380945	80,9	22477	4,8
MARAMURES	301131	100,0	51306	17,0	227763	75,6	22062	7,3
MEHEDINTI	144656	100,0	22599	15,6	111733	77,2	10324	7,1
MURES	393947	100,0	50762	12,9	322791	81,9	20394	5,2
NEAMT	303850	100,0	43407	14,3	240710	79,2	19733	6,5
OLT	170784	100,0	28069	16,4	130314	76,3	12401	7,3
PRAHOVA	481782	100,0	68004	14,1	387520	80,4	26258	5,5
SALAJ	125152	100,0	20314	16,2	96747	77,3	8091	6,5
SATU MARE	221076	100,0	34554	15,6	171889	77,8	14633	6,6
SIBIU	305183	100,0	40060	13,1	253188	83,0	11935	3,9
SUCEAVA	336885	100,0	50250	14,9	262141	77,8	24494	7,3
TELEORMAN	146475	100,0	23345	15,9	117312	80,1	5818	4,0
TIMIS	468598	100,0	72202	15,4	374753	80,0	21643	4,6
TULCEA	168437	100,0	20681	12,3	138672	82,3	9084	5,4
VASLUI	177639	100,0	25286	14,2	139900	78,8	12453	7,0
VALCEA	218237	100,0	32761	15,0	170414	78,1	15062	6,9
VRANCEA	174031	100,0	24800	14,3	141545	81,3	7686	4,4
MUN. BUCURESTI	2815500	100,0	378598	13,4	2294574	81,5	142328	5,1
ILFOV	228636	100,0	39339	17,2	179275	78,4	10022	4,4

Table no.3

**Number and structure of incorporations in the trade registers during December 1990  
- July 2010**

Period (year, month)	Registered companies		Percentage	
	No.	%	%	
0	1	2	3	
<b>Total, 31 July 2010, out of which</b>	<b>2033117</b>	<b>100,00</b>		
Year 1990	81	0,00		
Year 1991	95840	4,71		
Year 1992	137456	6,76		
Year 1993	117078	5,76		
Year 1994	137445	6,76		
Year 1995	65479	3,22		
Year 1996	62089	3,05		
Year 1997	55663	2,74		
Year 1998	63878	3,14		
Year 1999	57197	2,81		
Year 2000	57268	2,82		
Year 2001	61265	3,01		
Year 2002	84780	4,17		
Year 2003	123582	6,08		
Year 2004	144284	7,10		
Year 2005	159464	7,84		
Year 2006	135371	6,66		
Year 2007	144728	7,12		
Year 2008	144173	7,09		
Year 2009	116037	5,71		
<b>Year 2010 (I - XII) out of which :</b>	<b>69965</b>		<b>100,0</b>	
January	7739		11,1	
February	9623		13,8	
March	11893		17,0	
April	10273		14,7	
May	11306		16,2	
June	10197		14,6	
July	8934		12,8	

*Note: Column 2 reveals the annual structure of incorporations; column 3 reveals the structure by months during the current year.*

Diagram no.1

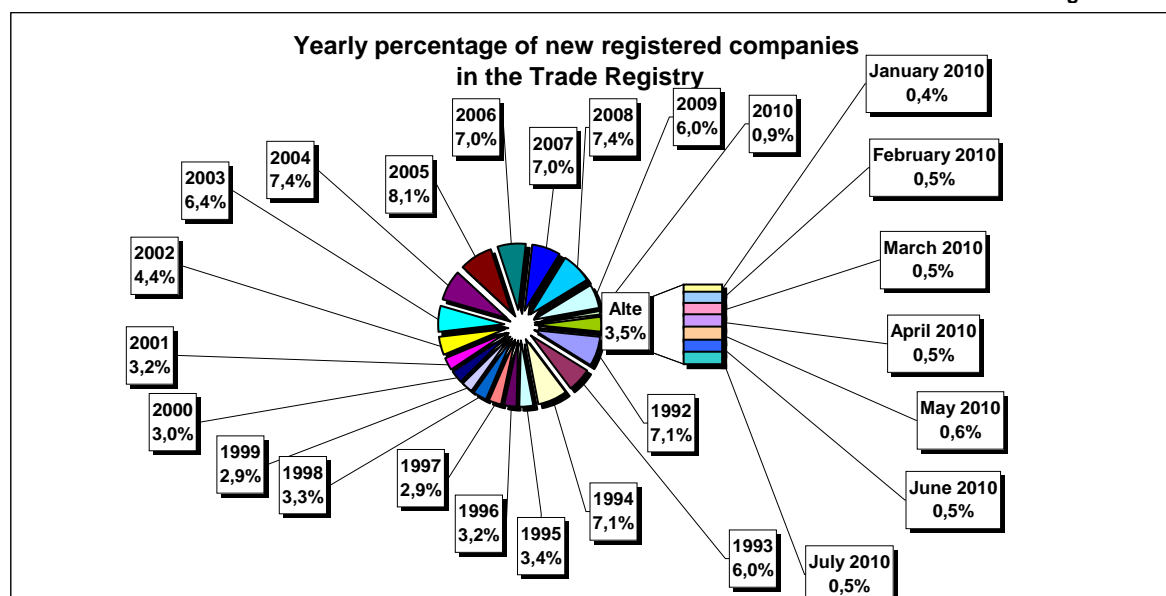


Table no. 4

**Number of incorporations in the trade registers by counties and capital sources during  
December 1990 - July 2010**

Counties	Total		out of which:						Ranking by: *	
			Private capital				State majority capital			Mixed capital (state+private)
			out of which:				out of which:			
			PF	Companies	SC	APJ	RA	Companies		Companies
No.	%	No.	No.	No.	No.	No.	No.			
0	1	2	3	4	5	6	6	7	8	9
<b>Total ROMÂNIA</b>	<b>2033117</b>	<b>100,0</b>	<b>581331</b>	<b>1431587</b>	<b>2049</b>	<b>5699</b>	<b>1390</b>	<b>2401</b>	<b>8667</b>	<b>X</b>
ALBA	32839	1,6	12406	19994	36	148	38	47	170	24
ARAD	49566	2,4	19485	29444	60	170	30	42	336	15
ARGES	51830	2,5	17382	34014	48	174	29	30	153	10
BACAU	50673	2,5	18051	31998	160	161	35	43	226	13
BIHOR	63098	3,1	17912	44560	63	152	40	62	309	8
BISTRITA-NASAUD	25201	1,2	9553	15337	46	99	28	29	109	30
BOTOSANI	24877	1,2	11989	12355	40	177	21	176	119	31
BRASOV	63317	3,1	15437	47389	58	125	49	87	172	7
BRAILA	28400	1,4	8620	19396	42	100	30	45	167	27
BUZAU	36642	1,8	11566	24676	46	153	28	42	131	22
CARAS-SEVERIN	24529	1,2	8819	15318	42	108	39	65	138	33
CALARASI	20540	1,0	6702	13530	22	91	18	77	100	38
CLUJ	93667	4,6	26146	66943	62	158	52	42	264	2
CONSTANTA	84022	4,1	18042	65038	87	210	51	51	543	3
COVASNA	17484	0,9	6838	10370	41	70	24	32	109	41
DAMBOVITA	37889	1,9	17682	19775	32	139	30	75	156	21
DOLJ	53498	2,6	12877	40112	39	169	40	58	203	9
GALATI	48249	2,4	11883	35967	35	140	30	51	143	16
GIURGIU	17002	0,8	4270	12391	15	84	23	109	110	42
GORJ	23977	1,2	6603	16930	26	184	51	83	100	34
HARGHITA	31731	1,6	14122	17154	64	92	24	43	232	26
HUNEDOARA	41192	2,0	11834	28818	33	84	42	95	286	18
IALOMITA	18968	0,9	7473	11233	27	83	15	46	91	40
IASI	67588	3,3	22327	44555	87	169	34	74	344	6
MARAMURES	51306	2,5	21410	29523	43	128	38	41	124	11
MEHEDINTI	22599	1,1	8132	14216	19	88	19	27	98	36
MURES	50762	2,5	19982	30320	68	159	30	34	169	12
NEAMT	43407	2,1	16657	26293	66	165	30	30	166	17
OLT	28069	1,4	11117	16546	27	166	26	64	123	28
PRAHOVA	68004	3,3	22720	44635	67	184	52	74	272	5
SALAJ	20314	1,0	8466	11586	41	110	19	28	64	39
SATU MARE	34554	1,7	12307	21913	41	98	20	42	134	23
SIBIU	40060	2,0	11684	27914	37	121	34	109	161	19
SUCEAVA	50250	2,5	24191	25460	73	209	31	65	221	14
TELEORMAN	23345	1,1	8607	14294	33	162	21	46	182	35
TIMIS	72202	3,6	13860	57661	69	154	38	69	351	4
TULCEA	20681	1,0	7760	12545	36	67	19	42	212	37
VASLUI	25286	1,2	12516	12443	22	112	16	41	136	29
VALCEA	32761	1,6	13622	18709	64	170	42	39	115	25
VRANCEA	24800	1,2	8171	16322	35	114	17	27	114	32
MUN. BUCURESTI	378598	18,6	36508	340509	65	154	116	106	1141	1
ILFOV	39339	1,9	5602	33401	31	98	21	13	173	20

\*) The total number of incorporations (col 1)

Table no. 5

**Number of incorporations in the trade registers by counties and business categories  
during December 1990 – July 2010**

County	Total		out of which:							
			PF	companies: 1442655				RA	SC	APJ
	SNC	SCS		SRL	SA					
	No.	%	No.	No.	No.	No.	No.	No.	No.	
0	1	2	3	4	5	6	7	8	9	10
<b>Total ROMÂNIA</b>	<b>2033117</b>	<b>100,0</b>	<b>581331</b>	<b>32680</b>	<b>1618</b>	<b>1374522</b>	<b>33828</b>	<b>1390</b>	<b>2049</b>	<b>5699</b>
ALBA	32839	1,6	12406	890	11	18736	574	38	36	148
ARAD	49566	2,4	19485	54	13	29051	703	30	60	170
ARGES	51830	2,5	17382	107	15	33234	841	29	48	174
BACAU	50673	2,5	18051	1299	4	30214	749	35	160	161
BIHOR	63098	3,1	17912	127	48	43824	932	40	63	152
BISTRITA-NASAUD	25201	1,2	9553	146	22	14884	423	28	46	99
BOTOSANI	24877	1,2	11989	468	1	11720	461	21	40	177
BRASOV	63325	3,1	15437	239	21	46503	893	49	58	125
BRAILA	28392	1,4	8620	376	12	18675	537	30	42	100
BUZAU	36642	1,8	11566	3747	46	20462	594	28	46	153
CARAS-SEVERIN	24529	1,2	8819	118	9	14919	475	39	42	108
CALARASI	20540	1,0	6702	609	3	12733	362	18	22	91
CLUJ	93667	4,6	26146	2112	21	63763	1353	52	62	158
CONSTANTA	84022	4,1	18042	311	23	63772	1526	51	87	210
COVASNA	17484	0,9	6838	148	4	10049	310	24	41	70
DAMBOVITA	37889	1,9	17682	60	8	19433	505	30	32	139
DOLJ	53498	2,6	12877	1560	8	37892	913	40	39	169
GALATI	48249	2,4	11883	1574	6	33715	866	30	35	140
GIURGIU	17002	0,8	4270	35	8	12236	331	23	15	84
GORJ	23977	1,2	6603	29	1	16577	506	51	26	184
HARGHITA	31731	1,6	14122	62	7	16859	501	24	64	92
HUNEDOARA	41192	2,0	11834	1166	98	27239	696	42	33	84
IALOMITA	18968	0,9	7473	269	12	10734	355	15	27	83
IASI	67588	3,3	22327	508	111	43314	1038	34	87	169
MARAMURES	51306	2,5	21410	1927	23	27128	609	38	43	128
MEHEDINTI	22599	1,1	8132	427	3	13568	343	19	19	88
MURES	50762	2,5	19982	37	34	29768	684	30	68	159
NEAMT	43407	2,1	16657	3293	30	22479	687	30	66	165
OLT	28069	1,4	11117	1611	1	14616	505	26	27	166
PRAHOVA	68004	3,3	22720	3122	15	40907	937	52	67	184
SALAJ	20314	1,0	8466	600	4	10774	300	19	41	110
SATU MARE	34554	1,7	12307	283	9	21315	481	20	41	98
SIBIU	40060	2,0	11684	778	49	26677	680	34	37	121
SUCEAVA	50250	2,5	24191	438	8	24701	599	31	73	209
TELEORMAN	23345	1,1	8607	272	399	13417	434	21	33	162
TIMIS	72202	3,6	13860	616	34	56139	1292	38	69	154
TULCEA	20681	1,0	7760	1363	114	10837	485	19	36	67
VASLUI	25286	1,2	12516	90	13	12092	425	16	22	112
VALCEA	32761	1,6	13622	364	6	17986	507	42	64	170
VRANCEA	24800	1,2	8171	356	10	15631	466	17	35	114
MUN. BUCURESTI	378598	18,6	36508	1039	321	333132	7263	116	65	154
ILFOV	39339	1,9	5602	50	33	32817	687	21	31	98

Table no. 6

**Operations performed in the trade registers by counties and categories of registration in the month of July 2010**

County	Total of operations carried on		out of which:					
			New incorporations		Changes in statutory documents		Strike off companies	
	No.	%	No.	%	No.	%	No.	%
0	1	2	3	4	5	6	9	10
<b>Total ROMÂNIA</b>	<b>116913</b>	<b>100,0</b>	<b>8934</b>	<b>7,6</b>	<b>85548</b>	<b>73,2</b>	<b>22431</b>	<b>19,2</b>
ALBA	6681	100,0	209	3,1	3555	53,2	2917	43,7
ARAD	1795	100,0	197	11,0	1405	78,3	193	10,8
ARGES	3777	100,0	268	7,1	2333	61,8	1176	31,1
BACAU	1938	100,0	231	11,9	1496	77,2	211	10,9
BIHOR	2264	100,0	327	14,4	1832	80,9	105	4,6
BISTRITA-NASAUD	932	100,0	108	11,6	800	85,8	24	2,6
BOTOSANI	2441	100,0	113	4,6	1437	58,9	891	36,5
BRASOV	3096	100,0	262	8,5	2439	78,8	395	12,8
BRAILA	1200	100,0	156	13,0	947	78,9	97	8,1
BUZAU	1369	100,0	185	13,5	1114	81,4	70	5,1
CARAS-SEVERIN	3411	100,0	98	2,9	1965	57,6	1348	39,5
CALARASI	5640	100,0	109	1,9	2999	53,2	2532	44,9
CLUJ	3670	100,0	359	9,8	3065	83,5	246	6,7
CONSTANTA	3968	100,0	343	8,6	3470	87,4	155	3,9
COVASNA	564	100,0	73	12,9	431	76,4	60	10,6
DAMBOVITA	1031	100,0	200	19,4	765	74,2	66	6,4
DOLJ	2100	100,0	284	13,5	1738	82,8	78	3,7
GALATI	5953	100,0	227	3,8	3823	64,2	1903	32,0
GIURGIU	773	100,0	125	16,2	591	76,5	57	7,4
GORJ	812	100,0	126	15,5	618	76,1	68	8,4
HARGHITA	1520	100,0	135	8,9	1277	84,0	108	7,1
HUNEDOARA	1632	100,0	169	10,4	1417	86,8	46	2,8
IALOMITA	531	100,0	83	15,6	417	78,5	31	5,8
IASI	2928	100,0	342	11,7	2446	83,5	140	4,8
MARAMURES	10693	100,0	194	1,8	5824	54,5	4675	43,7
MEHEDINTI	552	100,0	102	18,5	417	75,5	33	6,0
MURES	1933	100,0	207	10,7	1463	75,7	263	13,6
NEAMT	1371	100,0	155	11,3	1153	84,1	63	4,6
OLT	700	100,0	132	18,9	538	76,9	30	4,3
PRAHOVA	7839	100,0	343	4,4	4665	59,5	2831	36,1
SALAJ	965	100,0	122	12,6	761	78,9	82	8,5
SATU MARE	1197	100,0	149	12,4	971	81,1	77	6,4
SIBIU	1434	100,0	150	10,5	1136	79,2	148	10,3
SUCEAVA	1405	100,0	206	14,7	1109	78,9	90	6,4
TELEORMAN	752	100,0	129	17,2	527	70,1	96	12,8
TIMIS	3096	100,0	294	9,5	2630	84,9	172	5,6
TULCEA	638	100,0	91	14,3	520	81,5	27	4,2
VASLUI	5300	100,0	107	2,0	5180	97,7	13	0,2
VALCEA	1050	100,0	135	12,9	857	81,6	58	5,5
VRANCEA	769	100,0	121	15,7	616	80,1	32	4,2
MUN. BUCURESTI	15329	100,0	1250	8,2	13324	86,9	755	4,9
ILFOV	1864	100,0	318	17,1	1477	79,2	69	3,7

\*) by effect of implementation of Law no. 314/2001, art.1 and art. 6

Table no.7

**Number of incorporations in the trade registers by counties and capital sources in the month of July 2010**

County	Total		out of which:						Rnking by: *	
			Private capital				State majority capital			Mixed capital (state+private)
			out of which:				out of which:			
			PF	Companies	SC	APJ	RA	Compani es		Companies
No.	%	No.	No.	No.		No.	No.	No.		
0	1	2	3	4	5		6	7	8	9
<b>Total ROMÂNIA</b>	<b>8934</b>	<b>100,0</b>	<b>5037</b>	<b>3876</b>	<b>11</b>	<b>9</b>		<b>1</b>		<b>X</b>
ALBA	209	2,3	137	72						14
ARAD	197	2,2	119	78						18
ARGES	268	3,0	170	98						10
BACAU	231	2,6	137	82	10	1		1		12
BIHOR	327	3,7	164	163						6
BISTRITA-NASAUD	108	1,2	70	38						36
BOTOSANI	113	1,3	79	33		1				34
BRASOV	262	2,9	152	110						11
BRAILA	156	1,7	88	68						22
BUZAU	185	2,1	104	81						20
CARAS-SEVERIN	98	1,1	49	49						39
CALARASI	109	1,2	69	40						35
CLUJ	359	4,0	180	179						2
CONSTANTA	343	3,8	167	176						3
COVASNA	73	0,8	49	24						42
DAMBOVITA	200	2,2	164	36						17
DOLJ	284	3,2	149	134		1				9
GALATI	227	2,5	141	85		1				13
GIURGIU	125	1,4	50	75						31
GORJ	126	1,4	87	39						30
HARGHITA	135	1,5	95	39		1				26
HUNEDOARA	169	1,9	92	77						21
IALOMITA	83	0,9	43	40						41
IASI	342	3,8	228	114						5
MARAMURES	194	2,2	140	54						19
MEHEDINTI	102	1,1	82	20						38
MURES	207	2,3	147	60						15
NEAMT	155	1,7	106	49						23
OLT	132	1,5	78	54						28
PRAHOVA	343	3,8	215	128						4
SALAJ	122	1,4	82	40						32
SATU MARE	149	1,7	97	52						25
SIBIU	150	1,7	90	60						24
SUCEAVA	206	2,3	154	52						16
TELEORMAN	129	1,4	61	66		2				29
TIMIS	294	3,3	124	170						8
TULCEA	91	1,0	56	35						40
VASLUI	107	1,2	79	27		1				37
VALCEA	135	1,5	94	41						27
VRANCEA	121	1,4	80	41						33
MUN. BUCURESTI	1250	14,0	473	776	1					1
ILFOV	318	3,6	96	221		1				7

\*) The total number of incorporations (col 1)

\*\*\* Less than 0,01%

Table no.8

**Number of incorporations in the trade registers by counties and  
business categories in the month of July 2010**

County	Total		out of which:						APJ	
			PF	companies: 3877				RA		SC
	No.	%		No.	SNC	SCS	SRL			
			No.		No.	No.	No.	No.		No.
0	1	2	3	4	5	6	7	8	9	
<b>Total ROMÂNIA</b>	<b>8934</b>	<b>100,0</b>	<b>5037</b>	<b>1</b>	<b>8</b>	<b>3847</b>	<b>21</b>		<b>11</b>	<b>9</b>
ALBA	209	2,3	137			72				
ARAD	197	2,2	119			78				
ARGES	268	3,0	170			98				
BACAU	231	2,6	137			82	1		10	1
BIHOR	327	3,7	164			161	2			
BISTRITA-NASAUD	108	1,2	70			38				
BOTOSANI	113	1,3	79			33				1
BRASOV	262	2,9	152		1	109				
BRAILA	156	1,7	88			68				
BUZAU	185	2,1	104			80	1			
CARAS-SEVERIN	98	1,1	49			49				
CALARASI	109	1,2	69			40				
CLUJ	359	4,0	180			176	3			
CONSTANTA	343	3,8	167			176				
COVASNA	73	0,8	49			24				
DAMBOVITA	200	2,2	164			36				
DOLJ	284	3,2	149			134				1
GALATI	227	2,5	141			84	1			1
GIURGIU	125	1,4	50			75				
GORJ	126	1,4	87			39				
HARGHITA	135	1,5	95			39				1
HUNEDOARA	169	1,9	92			77				
IALOMITA	83	0,9	43			40				
IASI	342	3,8	228			114				
MARAMURES	194	2,2	140			53	1			
MEHEDINTI	102	1,1	82			20				
MURES	207	2,3	147			60				
NEAMT	155	1,7	106			49				
OLT	132	1,5	78			53	1			
PRAHOVA	343	3,8	215			128				
SALAJ	122	1,4	82			40				
SATU MARE	149	1,7	97			52				
SIBIU	150	1,7	90			60				
SUCEAVA	206	2,3	154			52				
TELEORMAN	129	1,4	61			66				2
TIMIS	294	3,3	124			170				
TULCEA	91	1,0	56			35				
VASLUI	107	1,2	79			26	1			1
VALCEA	135	1,5	94			41				
VRANCEA	121	1,4	80			41				
MUN. BUCURESTI	1250	14,0	473	1	7	761	7		1	
ILFOV	318	3,6	96			218	3			1





Table no. 10

**Number of incorporated trading companies and the value of the subscribed share capital, by counties, in the month of July 2010**

County	Total registered companies		Subscribed capital		Average subscribed capital on company
	No.	%	thousand Lei	%	thousand Lei
0	1	2	3	4	5
<b>Total ROMÂNIA</b>	<b>3877</b>	<b>100,0</b>	<b>362735,9</b>	<b>100,0</b>	<b>93,7</b>
ALBA	72	1,9	15,9	***	0,2
ARAD	78	2,0	72,9	0,0	0,9
ARGES	98	2,5	7660,2	2,1	78,2
BACAU	83	2,1	487,1	0,1	5,9
BIHOR	163	4,2	1752,8	0,5	10,8
BISTRITA-NASAUD	38	1,0	338,3	0,1	8,9
BOTOSANI	33	0,9	6,6	***	0,2
BRASOV	110	2,8	1385,3	0,4	12,6
BRAILA	68	1,8	16,2	***	0,2
BUZAU	81	2,1	464,4	0,1	5,7
CARAS-SEVERIN	49	1,3	70,5	0,0	1,4
CALARASI	40	1,0	2918,2	0,8	73,0
CLUJ	179	4,6	4713,7	1,3	26,3
CONSTANTA	176	4,5	195,8	0,1	1,1
COVASNA	24	0,6	6,2	***	0,3
DAMBOVITA	36	0,9	19,2	***	0,5
DOLJ	134	3,5	60,8	0,0	0,5
GALATI	85	2,2	279,2	0,1	3,3
GIURGIU	75	1,9	43,5	0,0	0,6
GORJ	39	1,0	348,9	0,1	9,2
HARGHITA	39	1,0	40,9	0,0	1,0
HUNEDOARA	77	2,0	1052,6	0,3	13,7
IALOMITA	40	1,0	60,8	0,0	1,5
IASI	114	2,9	52,1	0,0	0,5
MARAMURES	54	1,4	51,2	0,0	1,0
MEHEDINTI	20	0,5	14,7	***	0,7
MURES	60	1,5	104,5	0,0	1,7
NEAMT	49	1,3	31,5	***	0,6
OLT	54	1,4	135,7	0,0	2,5
PRAHOVA	128	3,3	16090,3	4,4	125,7
SALAJ	40	1,0	9,8	***	0,2
SATU MARE	52	1,3	92,7	0,0	1,8
SIBIU	60	1,5	38,8	0,0	0,6
SUCEAVA	52	1,3	13776,8	3,8	264,9
TELEORMAN	66	1,7	49,6	0,0	0,8
TIMIS	170	4,4	189,7	0,1	1,1
TULCEA	35	0,9	18,1	***	0,5
VASLUI	27	0,7	105,7	0,0	3,9
VALCEA	41	1,1	20,9	***	0,5
VRANCEA	41	1,1	10,3	***	0,3
MUN. BUCURESTI	776	20,0	302759,8	83,5	391,2
ILFOV	221	5,7	7173,8	2,0	32,5

Note: The average does not include filials because according to the

\*\*\* Less than 0,01%

Law no.31/1990 they are not juridical persons

Table no. 11

**Number of incorporated trading companies and the value of the subscribed share capital by legal forms, in the month of July 2010**

Company type	Total registered companies		Subscribed capital		Average subscribed capital on company
	No.	%	thousant Lei	%	thousant Lei
0	1	2	3	4	5
<b>Total ROMÂNIA</b>	<b>3877</b>	<b>100,0</b>	<b>362735,9</b>	<b>100,0</b>	<b>93,7</b>
<b>SNC</b>	1	0,0	0,2	***	
<b>SCS</b>	8	0,2	12,0	***	
<b>SA</b>	21	0,5	297500,7	82,0	15657,9
<b>SRL</b>	3847	99,2	65223,0	18,0	17,0

*Note: The average does not include filials because according to the Law no.31/1990 they are not juridical persons*

\*\*\* Less than 0,01%

Diagram no.5

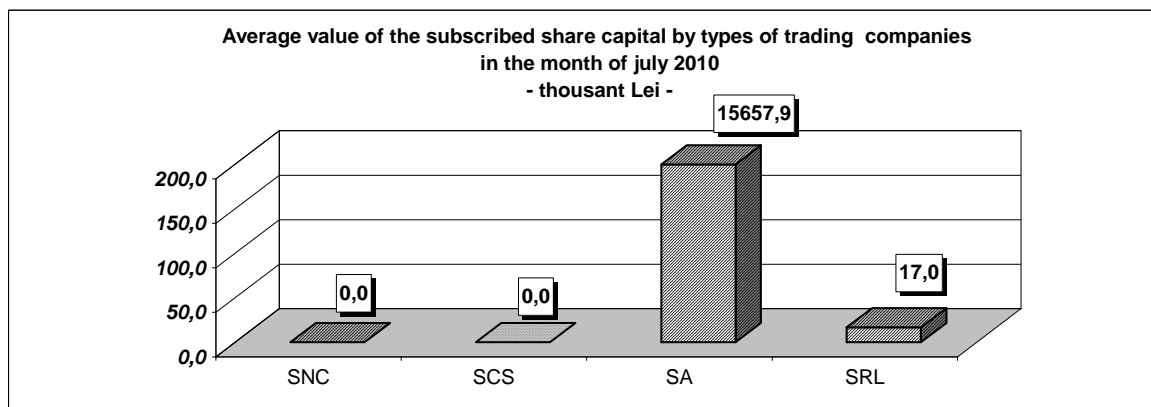




Table no. 10

**Number of incorporated trading companies and the value of the subscribed share capital, by counties, in the month of June 2010**

County	Total registered companies		Subscribed capital		Average subscribed capital on company
	No.	%	thousand Lei	%	thousand Lei
0	1	2	3	4	5
<b>Total ROMÂNIA</b>	4159	100,0	556365,0	100,0	134,3
ALBA	65	1,6	592,4	0,1	9,1
ARAD	81	1,9	480,5	0,1	5,9
ARGES	100	2,4	91,4	0,0	0,9
BACAU	72	1,7	165,7	0,0	2,3
BIHOR	139	3,3	120,1	0,0	0,9
BISTRITA-NASAUD	24	0,6	37,1	***	1,6
BOTOSANI	31	0,7	28,1	***	0,9
BRASOV	132	3,2	855,2	0,2	6,5
BRAILA	76	1,8	17,6	***	0,2
BUZAU	67	1,6	147,7	0,0	2,2
CARAS-SEVERIN	33	0,8	17,7	***	0,5
CALARASI	35	0,8	206,9	0,0	5,9
CLUJ	173	4,2	10749,5	1,9	62,1
CONSTANTA	196	4,7	113,8	0,0	0,6
COVASNA	23	0,6	96,3	0,0	4,4
DAMBOVITA	68	1,6	3361,3	0,6	49,4
DOLJ	116	2,8	827,9	0,1	7,1
GALATI	97	2,3	39,6	***	0,4
GIURGIU	59	1,4	461,9	0,1	8,0
GORJ	30	0,7	30,8	***	1,0
HARGHITA	28	0,7	9,3	***	0,3
HUNEDOARA	74	1,8	68,7	0,0	0,9
IALOMITA	47	1,1	375,6	0,1	8,0
IASI	145	3,5	8033,3	1,4	56,2
MARAMURES	62	1,5	86,5	0,0	1,4
MEHEDINTI	28	0,7	9721,5	1,7	347,2
MURES	70	1,7	50,9	***	0,7
NEAMT	77	1,9	136,4	0,0	1,8
OLT	46	1,1	163,0	0,0	3,5
PRAHOVA	135	3,2	2856,2	0,5	21,3
SALAJ	36	0,9	150,7	0,0	4,2
SATU MARE	57	1,4	2283,9	0,4	40,1
SIBIU	61	1,5	21,4	***	0,4
SUCEAVA	54	1,3	567,7	0,1	10,5
TELEORMAN	67	1,6	951,1	0,2	14,2
TIMIS	177	4,3	771,2	0,1	4,4
TULCEA	49	1,2	113,0	0,0	2,4
VASLUI	22	0,5	10,7	***	0,5
VALCEA	35	0,8	8,2	***	0,2
VRANCEA	46	1,1	11,5	***	0,2
MUN. BUCURESTI	967	23,3	443953,5	79,8	462,0
ILFOV	259	6,2	67579,0	12,1	260,9

Note: The average does not include filials because according to the Law no.31/1990 they are not juridical persons

\*\*\* Less than 0,01%

