



MINISTRY OF JUSTICE

THE NATIONAL TRADE REGISTER OFFICE

București, Bd. Unirii nr. 74, Bl. J3b, tronson II+III, sector 3; Telefon: +40 21 316.08.04, 316.08.10; Fax: +40 21 316.08.03; Cod poștal: 030837
Website: www.onrc.ro; E-mail: onrc@onrc.ro; Cod identificare Fiscală: 14942091

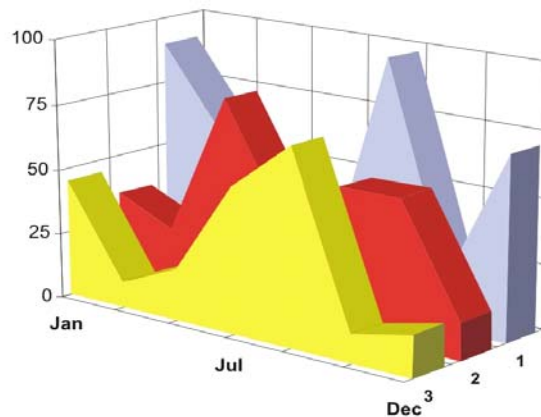
OPERATIONS IN THE CENTRAL TRADE REGISTER

STATISTIC SYNTHESIS

OF

RECORDS IN THE CENTRAL TRADE REGISTER

- 30th June 2010 - provisional data -



- ISSUE No. 223 -

MINISTRY OF JUSTICE THE NATIONAL TRADE REGISTER OFFICE

- Operations such as incorporation of trading companies, submission of changes, and strike-off are carried out based on Law No.26/1990, as republished, Law No.31/1990, as republished and on the Methodological Norms no. P/608/1998.
- This work reflects the evolution of the operations with the Trade Register Office attached to Bucharest Law Court and the Trade Register Offices attached to County Law Courts.
- The data contained in the Central Trade Register refer to operations for which law sets out the obligation of being registered in the trade registers kept by the 42 trade register offices attached to law courts.

• The content of this publication shall not be reproduced, partly or entirely, in original or modified form, and shall not be stored in a recovery system and shall not be transmitted in any form or by any means without prior written authorization of the Ministry of Justice – The National Trade Register Office.

• The content of this publication December be used in articles, studies, books, as supporting or explanatory data only by clearly and accurately indicating the source.

CONTENTS		Page
1	Definitions	1
<hr/>		
2.1	Data related to the period December 1990 –June 2010	3
<hr/>		
	Table no. 1 – Operations performed in the trade registers by categories of registration during December 1990 –June 2010, total by country and by counties, shares of counties in the total by country	3
	Table no. 2 – Operations performed in the trade registers by categories of registration during 1990 –June 2010, total by country and counties, share of categories of operations in the total of each county	4
	Table no. 3 – Number and structure of incorporations in the trade registers during 1990-June 2010	5
	Chart no. 1 – Structure by years of incorporations in the trade register	
	Table no. 4 – Number of incorporations in the trade registers by counties and capital sources during 1990 - June 2010	6
	Table no. 5 – Number of incorporations in the trade registers by counties and business categories during 1990 –June 2010	7
<hr/>		
2.2	Data related to June 2010	8
<hr/>		
	Table no. 6 – Operations performed in the trade registers by counties and categories of registrations in the month of June 2010	8
	Table no. 7 – Number of incorporations in the trade registers by counties and capital sources in the month of June 2010	9
	Table no. 8 – Number of incorporations in the trade registers by counties and business categories in the month of June 2010	10
	Table no. 9 –Number of incorporations in the trade registers by domains of activity and business categories in the month of June 2010	11-12
	Table no. 10 – Number of incorporated trading companies and the value of subscribed share capital, by counties, in the month of June 2010	13
	Table no. 11– Number of incorporated trading companies and the value of subscribed share capital by legal forms, in the month of June 2010	14
	Chart no. 5 – Average value of subscribed share capital by types of trading companies in the month of June 2010	14

Definitions

The Trade Register Office was established based on Law No. 26/1990, as republished and subsequently amended and supplemented, operates as an active institution since 1990 and is twofold structured:

- at national level, represented by the National Trade Register Office organized under the authority of the Ministry of Justice
- at local level, represented by the 42 Trade Register Offices attached to Law Courts, organized under the subordination of the National Trade Register Office

Categories of persons liable to registration in the trade register:

- natural persons: authorized natural persons, individual enterprises and family enterprises currently carrying on trading activities;
 - legal persons represented by: Trading Companies, National Societies and Companies, National R&D Institutes, Autonomous Administrations, Co-operative Societies, Agricultural Co-operatives, Co-operative Organizations, Economic Interest Groupings, European Economic Interest Groupings, European Societies, European Co-operative Societies, branches of trading companies with legal establishment, operation and incorporation regime of trading company legal form under which they were incorporated.
- **Terms used in tables and charts**
 - **Number of companies**, depending on the table, represents the number of trading companies incorporated during the reference period, the number of trading companies struck-off from the trade register. The following forms of organization are included: limited liability companies, joint-stock companies, limited partnerships by share, limited partnerships, general partnerships, and branches thereof.
 - **Value of subscribed share capital:**
 - **total, expressed in national currency:** the share capital value resulted by adding up the subscribed values (in cash and in kind) in national currency (lei)

- **Regions of economic development:**

<i>North-East:</i>	Suceava, Botoșani, Neamț, Iași, Bacău, Vaslui.
<i>South-East:</i>	Vrancea, Galați, Buzău, Brăila, Tulcea, Constanța.
<i>South-Muntenia:</i>	Argeș, Dâmbovița, Prahova, Teleorman, Giurgiu, Călărași, Ialomița.
<i>South-West Oltenia:</i>	Gorj, Vâlcea, Dolj, Mehedinți, Olt.
<i>West:</i>	Arad, Caraș-Severin, Hunedoara, Timiș.
<i>North-West:</i>	Bihor, Bistrița, Cluj, Satu Mare, Sălaj, Maramureș.
<i>Center:</i>	Alba, Brașov, Covasna, Harghita, Mureș, Sibiu.
<i>Bucharest-Ilfov:</i>	București, Ilfov.

NACE Code – The classification of economic activities in the national economy was approved by GO No. 656/1997, amended by Order No 601/2002 and Order no. 337/2007 of the President of the National Institute of Statistics, and complies with the international classification used in statistic reports and official documents. The activities are ranked by the harmonization principle, by sections, divisions, groups and classes.

Abbreviations

- **PF** - Natural Person; the following forms of organization are included in this category: natural persons and family associations registered until 25.04.2008, authorized natural persons, individual enterprises and family enterprises.
- **SNC** - General Partnership
- **SCS** - Limited Partnership
- **SCA** - Limited Partnership by Share
- **SA** - Joint-Stock Company
- **SRL** - Limited Liability Company
- **RA** - Autonomous Administration
- **APJ** - Other legal persons having the obligation to register in the trade register: National R&D Institutes, Economic Interest Groupings, European Economic Interest Groupings, European Societies, European Co-operative Societies, Agricultural Co-operatives, Co-operative Organizations.

Sources of Information:

The integrated IT system of the trade register is designed by The National Trade Register Office in compliance with the provisions of the related legislation in force. The source of information consists of the trade registers organized in computerized system, kept by the trade register offices attached to law courts.

Table no. 1

**Operations performed in the trade registers by categories of registration during
December 1990 – June 2010, total by country and by counties, share of counties in
the total by country**

Counties	Total of registered operations		out of which :					
			Registered companies		Changes in statutory documents		Strike off companies	
	No.	%	No.	%	No.	%	No.	%
0	1	2	3	4	7	8	11	12
Total ROMÂNIA	14066387	100,0	2024189	100,0	11291454	100,0	750744	100,0
ALBA	208073	1,5	32630	1,6	167087	1,5	8356	1,1
ARAD	333889	2,4	49369	2,4	265114	2,3	19406	2,6
ARGES	340310	2,4	51562	2,5	274288	2,4	14460	1,9
BACAU	327935	2,3	50442	2,5	256072	2,3	21421	2,9
BIHOR	429209	3,1	62771	3,1	345322	3,1	21116	2,8
BISTRITA-NASAUD	169624	1,2	25093	1,2	134434	1,2	10097	1,3
BOTOSANI	127916	0,9	24764	1,2	94828	0,8	8324	1,1
BRASOV	553475	3,9	63064	3,1	469648	4,2	20763	2,8
BRAILA	217155	1,5	28236	1,4	180972	1,6	7947	1,1
BUZAU	245128	1,7	36457	1,8	193081	1,7	15590	2,1
CARAS-SEVERIN	162131	1,2	24431	1,2	127411	1,1	10289	1,4
CALARASI	124722	0,9	20431	1,0	98213	0,9	6078	0,8
CLUJ	622331	4,4	93308	4,6	500048	4,4	28975	3,9
CONSTANTA	599411	4,3	83680	4,1	480984	4,3	34747	4,6
COVASNA	120765	0,9	17411	0,9	97444	0,9	5910	0,8
DAMBOVITA	204250	1,5	37689	1,9	148203	1,3	18358	2,4
DOLJ	377573	2,7	53214	2,6	303943	2,7	20416	2,7
GALATI	355231	2,5	48022	2,4	289267	2,6	17942	2,4
GIURGIU	111214	0,8	16877	0,8	87179	0,8	7158	1,0
GORJ	216654	1,5	23851	1,2	183370	1,6	9433	1,3
HARGHITA	211019	1,5	31596	1,6	169342	1,5	10081	1,3
HUNEDOARA	284177	2,0	41023	2,0	225768	2,0	17386	2,3
IALOMITA	130996	0,9	18885	0,9	102864	0,9	9247	1,2
IASI	468082	3,3	67246	3,3	378499	3,4	22337	3,0
MARAMURES	290438	2,1	51112	2,5	221939	2,0	17387	2,3
MEHEDINTI	144104	1,0	22497	1,1	111316	1,0	10291	1,4
MURES	392014	2,8	50555	2,5	321328	2,8	20131	2,7
NEAMT	302479	2,2	43252	2,1	239557	2,1	19670	2,6
OLT	170084	1,2	27937	1,4	129776	1,1	12371	1,6
PRAHOVA	473943	3,4	67661	3,3	382855	3,4	23427	3,1
SALAJ	124187	0,9	20192	1,0	95986	0,9	8009	1,1
SATU MARE	219879	1,6	34405	1,7	170918	1,5	14556	1,9
SIBIU	303749	2,2	39910	2,0	252052	2,2	11787	1,6
SUCEAVA	335480	2,4	50044	2,5	261032	2,3	24404	3,3
TELEORMAN	145723	1,0	23216	1,1	116785	1,0	5722	0,8
TIMIS	465502	3,3	71908	3,6	372123	3,3	21471	2,9
TULCEA	167799	1,2	20590	1,0	138152	1,2	9057	1,2
VASLUI	172339	1,2	25179	1,2	134720	1,2	12440	1,7
VALCEA	217187	1,5	32626	1,6	169557	1,5	15004	2,0
VRANCEA	173262	1,2	24679	1,2	140929	1,2	7654	1,0
MUN. BUCURESTI	2800175	19,9	377352	18,6	2281250	20,2	141573	18,9
ILFOV	226772	1,6	39021	1,9	177798	1,6	9953	1,3

Table no. 2

Operations performed in the trade registers during December 1990 – June 2010, total by country and counties, share of categories of operations in the total of each county

Counties	Total of registered operations		out of which :					
			Registered companies		Changes in statutory documents		Strike off companies	
	No.	%	No.	%	No.	%	No.	%
0	1	2	3	4	7	8	11	12
Total ROMÂNIA	14066387	100,0	2024189	14,4	11291454	80,3	750744	5,3
ALBA	208073	100,0	32630	15,7	167087	80,3	8356	4,0
ARAD	333889	100,0	49369	14,8	265114	79,4	19406	5,8
ARGES	340310	100,0	51562	15,2	274288	80,6	14460	4,2
BACAU	327935	100,0	50442	15,4	256072	78,1	21421	6,5
BIHOR	429209	100,0	62771	14,6	345322	80,5	21116	4,9
BISTRITA-NASAUD	169624	100,0	25093	14,8	134434	79,3	10097	6,0
BOTOSANI	127916	100,0	24764	19,4	94828	74,1	8324	6,5
BRASOV	553475	100,0	63064	11,4	469648	84,9	20763	3,8
BRAILA	217155	100,0	28236	13,0	180972	83,3	7947	3,7
BUZAU	245128	100,0	36457	14,9	193081	78,8	15590	6,4
CARAS-SEVERIN	162131	100,0	24431	15,1	127411	78,6	10289	6,3
CALARASI	124722	100,0	20431	16,4	98213	78,7	6078	4,9
CLUJ	622331	100,0	93308	15,0	500048	80,4	28975	4,7
CONSTANTA	599411	100,0	83680	14,0	480984	80,2	34747	5,8
COVASNA	120765	100,0	17411	14,4	97444	80,7	5910	4,9
DAMBOVITA	204250	100,0	37689	18,5	148203	72,6	18358	9,0
DOLJ	377573	100,0	53214	14,1	303943	80,5	20416	5,4
GALATI	355231	100,0	48022	13,5	289267	81,4	17942	5,1
GIURGIU	111214	100,0	16877	15,2	87179	78,4	7158	6,4
GORJ	216654	100,0	23851	11,0	183370	84,6	9433	4,4
HARGHITA	211019	100,0	31596	15,0	169342	80,2	10081	4,8
HUNEDOARA	284177	100,0	41023	14,4	225768	79,4	17386	6,1
IALOMITA	130996	100,0	18885	14,4	102864	78,5	9247	7,1
IASI	468082	100,0	67246	14,4	378499	80,9	22337	4,8
MARAMURES	290438	100,0	51112	17,6	221939	76,4	17387	6,0
MEHEDINTI	144104	100,0	22497	15,6	111316	77,2	10291	7,1
MURES	392014	100,0	50555	12,9	321328	82,0	20131	5,1
NEAMT	302479	100,0	43252	14,3	239557	79,2	19670	6,5
OLT	170084	100,0	27937	16,4	129776	76,3	12371	7,3
PRAHOVA	473943	100,0	67661	14,3	382855	80,8	23427	4,9
SALAJ	124187	100,0	20192	16,3	95986	77,3	8009	6,4
SATU MARE	219879	100,0	34405	15,6	170918	77,7	14556	6,6
SIBIU	303749	100,0	39910	13,1	252052	83,0	11787	3,9
SUCEAVA	335480	100,0	50044	14,9	261032	77,8	24404	7,3
TELEORMAN	145723	100,0	23216	15,9	116785	80,1	5722	3,9
TIMIS	465502	100,0	71908	15,4	372123	79,9	21471	4,6
TULCEA	167799	100,0	20590	12,3	138152	82,3	9057	5,4
VASLUI	172339	100,0	25179	14,6	134720	78,2	12440	7,2
VALCEA	217187	100,0	32626	15,0	169557	78,1	15004	6,9
VRANCEA	173262	100,0	24679	14,2	140929	81,3	7654	4,4
MUN. BUCURESTI	2800175	100,0	377352	13,5	2281250	81,5	141573	5,1
ILFOV	226772	100,0	39021	17,2	177798	78,4	9953	4,4

Table no.3

Number and structure of incorporations in the trade registers during December 1990 - June 2010

Period (year, month)	Registered companies		Percentage	
	No.	%	%	
0	1	2	3	
Total, 30 June 2010, out of which	2024189	100,00		
Year 1990	81	0,00		
Year 1991	95840	4,73		
Year 1992	137456	6,79		
Year 1993	117078	5,78		
Year 1994	137445	6,79		
Year 1995	65479	3,23		
Year 1996	62089	3,07		
Year 1997	55663	2,75		
Year 1998	63878	3,16		
Year 1999	57197	2,83		
Year 2000	57268	2,83		
Year 2001	61265	3,03		
Year 2002	84780	4,19		
Year 2003	123582	6,11		
Year 2004	144284	7,13		
Year 2005	159464	7,88		
Year 2006	135371	6,69		
Year 2007	144728	7,15		
Year 2008	144173	7,12		
Year 2009	116037	5,73		
Year 2010 (I - XII) out of which :	61031			100,0
January	7739			12,7
February	9623			15,8
March	11893			19,5
April	10273			16,8
May	11306			18,5
June	10197			16,7

Note: Column 2 reveals the annual structure of incorporations; column 3 reveals the structure by months during the current year.

Diagram no.1

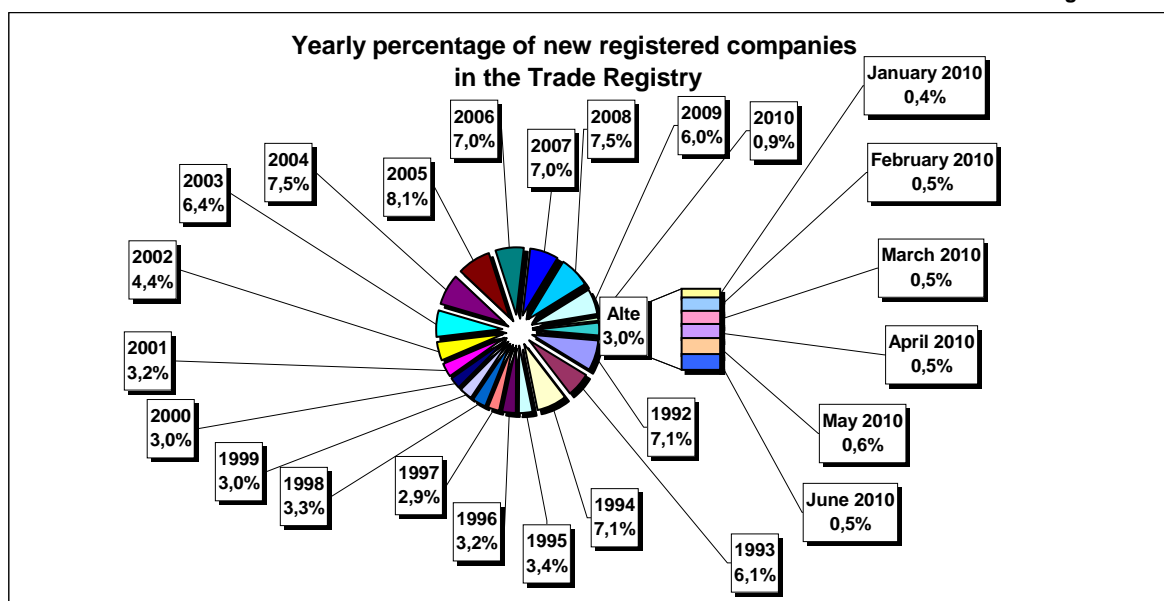


Table no. 4

**Number of incorporations in the trade registers by counties and capital sources during
December 1990 - June 2010**

Counties	Total		out of which:						Ranking by: *	
			Private capital				State majority capital			Mixed capital (state+private)
			out of which:				out of which:			Companies
			PF	Companies	SC	APJ	RA	Companies		Companies
No.	%	No.	No.	No.	No.	No.	No.	No.		
0	1	2	3	4	5	6	6	7	8	9
Total ROMÂNIA	2024189	100,0	576298	1427711	2040	5690	1390	2400	8667	X
ALBA	32630	1,6	12269	19922	36	148	38	47	170	24
ARAD	49369	2,4	19366	29366	60	170	30	42	336	15
ARGES	51562	2,5	17212	33916	48	174	29	30	153	10
BACAU	50442	2,5	17914	31916	150	160	35	42	226	13
BIHOR	62771	3,1	17748	44397	63	152	40	62	309	8
BISTRITA-NASAUD	25093	1,2	9483	15299	46	99	28	29	109	30
BOTOSANI	24764	1,2	11910	12322	40	176	21	176	119	31
BRASOV	63056	3,1	15285	47279	59	125	49	87	172	7
BRAILA	28244	1,4	8532	19328	42	100	30	45	167	27
BUZAU	36457	1,8	11462	24595	46	153	28	42	131	22
CARAS-SEVERIN	24431	1,2	8770	15269	42	108	39	65	138	33
CALARASI	20431	1,0	6633	13490	22	91	18	77	100	38
CLUJ	93308	4,6	25966	66764	62	158	52	42	264	2
CONSTANTA	83680	4,1	17875	64862	88	210	51	51	543	3
COVASNA	17411	0,9	6789	10346	41	70	24	32	109	41
DAMBOVITA	37689	1,9	17518	19739	32	139	30	75	156	21
DOLJ	53214	2,6	12728	39978	39	168	40	58	203	9
GALATI	48022	2,4	11742	35882	35	139	30	51	143	16
GIURGIU	16877	0,8	4220	12316	15	84	23	109	110	42
GORJ	23851	1,2	6516	16891	26	184	51	83	100	34
HARGHITA	31596	1,6	14027	17115	64	91	24	43	232	26
HUNEDOARA	41023	2,0	11742	28741	33	84	42	95	286	18
IALOMITA	18885	0,9	7430	11193	27	83	15	46	91	40
IASI	67246	3,3	22099	44441	87	169	34	74	344	6
MARAMURES	51112	2,5	21270	29469	43	128	38	41	124	11
MEHEDINTI	22497	1,1	8050	14196	19	88	19	27	98	36
MURES	50555	2,5	19835	30260	68	159	30	34	169	12
NEAMT	43252	2,1	16551	26244	66	165	30	30	166	17
OLT	27937	1,4	11039	16492	27	166	26	64	123	28
PRAHOVA	67661	3,3	22505	44507	67	184	52	74	272	5
SALAJ	20192	1,0	8384	11546	41	110	19	28	64	39
SATU MARE	34405	1,7	12210	21861	41	98	20	42	134	23
SIBIU	39910	2,0	11594	27854	37	121	34	109	161	19
SUCEAVA	50044	2,5	24037	25408	73	209	31	65	221	14
TELEORMAN	23216	1,1	8546	14228	33	160	21	46	182	35
TIMIS	71908	3,6	13736	57491	69	154	38	69	351	4
TULCEA	20590	1,0	7704	12510	36	67	19	42	212	37
VASLUI	25179	1,2	12437	12416	22	111	16	41	136	29
VALCEA	32626	1,6	13528	18668	64	170	42	39	115	25
VRANCEA	24679	1,2	8091	16281	35	114	17	27	114	32
MUN. BUCURESTI	377352	18,6	36039	339733	64	154	116	106	1141	1
ILFOV	39021	1,9	5506	33180	31	97	21	13	173	20

*) The total number of incorporations (col 1)

Table no. 5

**Number of incorporations in the trade registers by counties and business categories
during December 1990 – June 2010**

County	Total		out of which:							
			PF	companies: 1438778				RA	SC	APJ
	SNC	SCS		SRL	SA					
	No.	%	No.	No.	No.	No.	No.	No.	No.	
0	1	2	3	4	5	6	7	8	9	10
Total ROMÂNIA	2024189	100,0	576298	32679	1610	1370675	33807	1390	2040	5690
ALBA	32630	1,6	12269	890	11	18664	574	38	36	148
ARAD	49369	2,4	19366	54	13	28973	703	30	60	170
ARGES	51562	2,5	17212	107	15	33136	841	29	48	174
BACAU	50442	2,5	17914	1299	4	30132	748	35	150	160
BIHOR	62771	3,1	17748	127	48	43663	930	40	63	152
BISTRITA-NASAUD	25093	1,2	9483	146	22	14846	423	28	46	99
BOTOSANI	24764	1,2	11910	468	1	11687	461	21	40	176
BRASOV	63064	3,1	15285	239	20	46394	893	49	59	125
BRAILA	28236	1,4	8532	376	12	18607	537	30	42	100
BUZAU	36457	1,8	11462	3747	46	20382	593	28	46	153
CARAS-SEVERIN	24431	1,2	8770	118	9	14870	475	39	42	108
CALARASI	20431	1,0	6633	609	3	12693	362	18	22	91
CLUJ	93308	4,6	25966	2112	21	63587	1350	52	62	158
CONSTANTA	83680	4,1	17875	311	23	63596	1526	51	88	210
COVASNA	17411	0,9	6789	148	4	10025	310	24	41	70
DAMBOVITA	37689	1,9	17518	60	8	19397	505	30	32	139
DOLJ	53214	2,6	12728	1560	8	37758	913	40	39	168
GALATI	48022	2,4	11742	1574	6	33631	865	30	35	139
GIURGIU	16877	0,8	4220	35	8	12161	331	23	15	84
GORJ	23851	1,2	6516	29	1	16538	506	51	26	184
HARGHITA	31596	1,6	14027	62	7	16820	501	24	64	91
HUNEDOARA	41023	2,0	11742	1166	98	27162	696	42	33	84
IALOMITA	18885	0,9	7430	269	12	10694	355	15	27	83
IASI	67246	3,3	22099	508	111	43200	1038	34	87	169
MARAMURES	51112	2,5	21270	1927	23	27075	608	38	43	128
MEHEDINTI	22497	1,1	8050	427	3	13548	343	19	19	88
MURES	50555	2,5	19835	37	34	29708	684	30	68	159
NEAMT	43252	2,1	16551	3293	30	22430	687	30	66	165
OLT	27937	1,4	11039	1611	1	14563	504	26	27	166
PRAHOVA	67661	3,3	22505	3122	15	40779	937	52	67	184
SALAJ	20192	1,0	8384	600	4	10734	300	19	41	110
SATU MARE	34405	1,7	12210	283	9	21263	481	20	41	98
SIBIU	39910	2,0	11594	778	49	26617	680	34	37	121
SUCEAVA	50044	2,5	24037	438	8	24649	599	31	73	209
TELEORMAN	23216	1,1	8546	272	399	13351	434	21	33	160
TIMIS	71908	3,6	13736	616	34	55969	1292	38	69	154
TULCEA	20590	1,0	7704	1363	114	10802	485	19	36	67
VASLUI	25179	1,2	12437	90	13	12066	424	16	22	111
VALCEA	32626	1,6	13528	364	6	17945	507	42	64	170
VRANCEA	24679	1,2	8091	356	10	15590	466	17	35	114
MUN. BUCURESTI	377352	18,6	36039	1038	314	332371	7256	116	64	154
ILFOV	39021	1,9	5506	50	33	32599	684	21	31	97

Table no. 6

Operations performed in the trade registers by counties and categories of registration in the month of June 2010

County	Total of operations carried on		out of which:					
			New incorporations		Changes in statutory documents		Strike off companies	
	No.	%	No.	%	No.	%	No.	%
0	1	2	3	4	5	6	9	10
Total ROMÂNIA	178591	100,0	10197	5,7	131079	73,4	37315	20,9
ALBA	1705	100,0	171	10,0	1296	76,0	238	14,0
ARAD	2049	100,0	220	10,7	1683	82,1	146	7,1
ARGES	4986	100,0	275	5,5	3393	68,1	1318	26,4
BACAU	4953	100,0	252	5,1	4528	91,4	173	3,5
BIHOR	7825	100,0	350	4,5	5244	67,0	2231	28,5
BISTRITA-NASAUD	3181	100,0	122	3,8	2074	65,2	985	31,0
BOTOSANI	3100	100,0	127	4,1	1922	62,0	1051	33,9
BRASOV	4379	100,0	309	7,1	3657	83,5	413	9,4
BRAILA	3770	100,0	182	4,8	2263	60,0	1325	35,1
BUZAU	1854	100,0	200	10,8	1614	87,1	40	2,2
CARAS-SEVERIN	1428	100,0	95	6,7	1231	86,2	102	7,1
CALARASI	1930	100,0	132	6,8	1744	90,4	54	2,8
CLUJ	18360	100,0	373	2,0	10872	59,2	7115	38,8
CONSTANTA	5235	100,0	430	8,2	4648	88,8	157	3,0
COVASNA	669	100,0	82	12,3	531	79,4	56	8,4
DAMBOVITA	1664	100,0	237	14,2	1368	82,2	59	3,5
DOLJ	3436	100,0	291	8,5	2638	76,8	507	14,8
GALATI	2821	100,0	249	8,8	2440	86,5	132	4,7
GIURGIU	2988	100,0	98	3,3	1744	58,4	1146	38,4
GORJ	2485	100,0	135	5,4	1748	70,3	602	24,2
HARGHITA	1901	100,0	146	7,7	1704	89,6	51	2,7
HUNEDOARA	2278	100,0	203	8,9	1960	86,0	115	5,0
IALOMITA	5151	100,0	97	1,9	2834	55,0	2220	43,1
IASI	4115	100,0	454	11,0	3497	85,0	164	4,0
MARAMURES	7276	100,0	194	2,7	4520	62,1	2562	35,2
MEHEDINTI	815	100,0	114	14,0	663	81,3	38	4,7
MURES	2736	100,0	247	9,0	2297	84,0	192	7,0
NEAMT	2457	100,0	221	9,0	2172	88,4	64	2,6
OLT	1014	100,0	132	13,0	837	82,5	45	4,4
PRAHOVA	6254	100,0	384	6,1	4186	66,9	1684	26,9
SALAJ	1475	100,0	114	7,7	1266	85,8	95	6,4
SATU MARE	5908	100,0	170	2,9	3422	57,9	2316	39,2
SIBIU	1851	100,0	196	10,6	1506	81,4	149	8,0
SUCEAVA	10874	100,0	265	2,4	6192	56,9	4417	40,6
TELEORMAN	861	100,0	121	14,1	708	82,2	32	3,7
TIMIS	4317	100,0	352	8,2	3762	87,1	203	4,7
TULCEA	1049	100,0	104	9,9	792	75,5	153	14,6
VASLUI	1031	100,0	108	10,5	889	86,2	34	3,3
VALCEA	1404	100,0	168	12,0	1177	83,8	59	4,2
VRANCEA	1422	100,0	146	10,3	1189	83,6	87	6,1
MUN. BUCURESTI	32560	100,0	1555	4,8	26335	80,9	4670	14,3
ILFOV	3024	100,0	376	12,4	2533	83,8	115	3,8

*) by effect of implementation of Law no. 314/2001, art. 1 and art. 6

Table no.7

Number of incorporations in the trade registers by counties and capital sources in the month of June 2010

County	Total		out of which:						Rnking by: *	
			Private capital				State majority capital			Mixed capital (state+private)
			out of which:				out of which:			
			PF	Companies	SC	APJ	RA	Compani es		Companies
No.	%	No.	No.	No.		No.	No.	No.		
0	1	2	3	4	5	6	7	8	9	
Total ROMÂNIA	10197	100,0	6022	4155	2	14		3	1	X
ALBA	171	1,7	106	65						24
ARAD	220	2,2	139	81						18
ARGES	275	2,7	175	100						11
BACAU	252	2,5	180	72						13
BIHOR	350	3,4	211	139						8
BISTRITA-NASAUD	122	1,2	98	24						33
BOTOSANI	127	1,2	92	31		4				32
BRASOV	309	3,0	176	132	1					9
BRAILA	182	1,8	106	76						23
BUZAU	200	2,0	133	67						20
CARAS-SEVERIN	95	0,9	60	33		2				41
CALARASI	132	1,3	95	35		2				30
CLUJ	373	3,7	200	173						6
CONSTANTA	430	4,2	233	196	1					3
COVASNA	82	0,8	59	23						42
DAMBOVITA	237	2,3	168	67		1			1	16
DOLJ	291	2,9	175	116						10
GALATI	249	2,4	152	97						14
GIURGIU	98	1,0	39	59						39
GORJ	135	1,3	105	30						29
HARGHITA	146	1,4	118	28						27
HUNEDOARA	203	2,0	129	74						19
IALOMITA	97	1,0	50	47						40
IASI	454	4,5	308	142		1		3		2
MARAMURES	194	1,9	132	62						22
MEHEDINTI	114	1,1	86	28						35
MURES	247	2,4	177	70						15
NEAMT	221	2,2	144	77						17
OLT	132	1,3	86	46						31
PRAHOVA	384	3,8	249	135						4
SALAJ	114	1,1	78	36						36
SATU MARE	170	1,7	113	57						25
SIBIU	196	1,9	134	61		1				21
SUCEAVA	265	2,6	210	54		1				12
TELEORMAN	121	1,2	54	67						34
TIMIS	352	3,5	175	177						7
TULCEA	104	1,0	55	49						38
VASLUI	108	1,1	85	22		1				37
VALCEA	168	1,6	133	35						26
VRANCEA	146	1,4	100	46						28
MUN. BUCURESTI	1555	15,2	587	967		1				1
ILFOV	376	3,7	117	259						5

*) The total number of incorporations (col 1)

*** Less than 0,01%

Table no.8

**Number of incorporations in the trade registers by counties and
business categories in the month of June 2010**

County	Total		out of which:						APJ	
			PF	companies: 4159				RA		SC
	SNC	SCS		SRL	SA					
	No.	%	No.	No.	No.	No.	No.	No.		
0	1	2	3	4	5	6	7	8	9	
Total ROMÂNIA	10197	100,0	6022		1	4132	26		2	14
ALBA	171	1,7	106			65				
ARAD	220	2,2	139			80	1			
ARGES	275	2,7	175			100				
BACAU	252	2,5	180			71	1			
BIHOR	350	3,4	211		1	138				
BISTRITA-NASAUD	122	1,2	98			23	1			
BOTOSANI	127	1,2	92			31				4
BRASOV	309	3,0	176			132			1	
BRAILA	182	1,8	106			76				
BUZAU	200	2,0	133			67				
CARAS-SEVERIN	95	0,9	60			33				2
CALARASI	132	1,3	95			35				2
CLUJ	373	3,7	200			171	2			
CONSTANTA	430	4,2	233			196			1	
COVASNA	82	0,8	59			22	1			
DAMBOVITA	237	2,3	168			67	1			1
DOLJ	291	2,9	175			115	1			
GALATI	249	2,4	152			97				
GIURGIU	98	1,0	39			58	1			
GORJ	135	1,3	105			30				
HARGHITA	146	1,4	118			28				
HUNEDOARA	203	2,0	129			74				
IALOMITA	97	1,0	50			47				
IASI	454	4,5	308			142	3			1
MARAMURES	194	1,9	132			62				
MEHEDINTI	114	1,1	86			27	1			
MURES	247	2,4	177			70				
NEAMT	221	2,2	144			77				
OLT	132	1,3	86			45	1			
PRAHOVA	384	3,8	249			135				
SALAJ	114	1,1	78			36				
SATU MARE	170	1,7	113			57				
SIBIU	196	1,9	134			61				1
SUCEAVA	265	2,6	210			54				1
TELEORMAN	121	1,2	54			67				
TIMIS	352	3,5	175			177				
TULCEA	104	1,0	55			48	1			
VASLUI	108	1,1	85			22				1
VALCEA	168	1,6	133			35				
VRANCEA	146	1,4	100			46				
MUN. BUCURESTI	1555	15,2	587			960	7			1
ILFOV	376	3,7	117			255	4			

Table no. 10

Number of incorporated trading companies and the value of the subscribed share capital, by counties, in the month of June 2010

County	Total registered companies		Subscribed capital		Average subscribed capital on company
	No.	%	thousand Lei	%	thousand Lei
0	1	2	3	4	5
Total ROMÂNIA	4159	100,0	556365,0	100,0	134,3
ALBA	65	1,6	592,4	0,1	9,1
ARAD	81	1,9	480,5	0,1	5,9
ARGES	100	2,4	91,4	0,0	0,9
BACAU	72	1,7	165,7	0,0	2,3
BIHOR	139	3,3	120,1	0,0	0,9
BISTRITA-NASAUD	24	0,6	37,1	***	1,6
BOTOSANI	31	0,7	28,1	***	0,9
BRASOV	132	3,2	855,2	0,2	6,5
BRAILA	76	1,8	17,6	***	0,2
BUZAU	67	1,6	147,7	0,0	2,2
CARAS-SEVERIN	33	0,8	17,7	***	0,5
CALARASI	35	0,8	206,9	0,0	5,9
CLUJ	173	4,2	10749,5	1,9	62,1
CONSTANTA	196	4,7	113,8	0,0	0,6
COVASNA	23	0,6	96,3	0,0	4,4
DAMBOVITA	68	1,6	3361,3	0,6	49,4
DOLJ	116	2,8	827,9	0,1	7,1
GALATI	97	2,3	39,6	***	0,4
GIURGIU	59	1,4	461,9	0,1	8,0
GORJ	30	0,7	30,8	***	1,0
HARGHITA	28	0,7	9,3	***	0,3
HUNEDOARA	74	1,8	68,7	0,0	0,9
IALOMITA	47	1,1	375,6	0,1	8,0
IASI	145	3,5	8033,3	1,4	56,2
MARAMURES	62	1,5	86,5	0,0	1,4
MEHEDINTI	28	0,7	9721,5	1,7	347,2
MURES	70	1,7	50,9	***	0,7
NEAMT	77	1,9	136,4	0,0	1,8
OLT	46	1,1	163,0	0,0	3,5
PRAHOVA	135	3,2	2856,2	0,5	21,3
SALAJ	36	0,9	150,7	0,0	4,2
SATU MARE	57	1,4	2283,9	0,4	40,1
SIBIU	61	1,5	21,4	***	0,4
SUCEAVA	54	1,3	567,7	0,1	10,5
TELEORMAN	67	1,6	951,1	0,2	14,2
TIMIS	177	4,3	771,2	0,1	4,4
TULCEA	49	1,2	113,0	0,0	2,4
VASLUI	22	0,5	10,7	***	0,5
VALCEA	35	0,8	8,2	***	0,2
VRANCEA	46	1,1	11,5	***	0,2
MUN. BUCURESTI	967	23,3	443953,5	79,8	462,0
ILFOV	259	6,2	67579,0	12,1	260,9

Note: The average does not include filials because according to the

*** Less than 0,01%

Law no.31/1990 they are not juridical persons

Table no. 11

Number of incorporated trading companies and the value of the subscribed share capital by legal forms, in the month of June 2010

Company type	Total registered companies		Subscribed capital		Average subscribed capital on company
	No.	%	thousant Lei	%	thousant Lei
0	1	2	3	4	5
Total ROMÂNIA	4159	100,0	556365,0	100,0	134,3
SNC					
SCS	1	0,0			
SA	26	0,6	373968,7	67,2	19682,6
SRL	4132	99,4	182396,3	32,8	44,2

Note: The average does not include filials because according to the Law no.31/1990 they are not juridical persons

*** Less than 0,01%

Diagram no.5

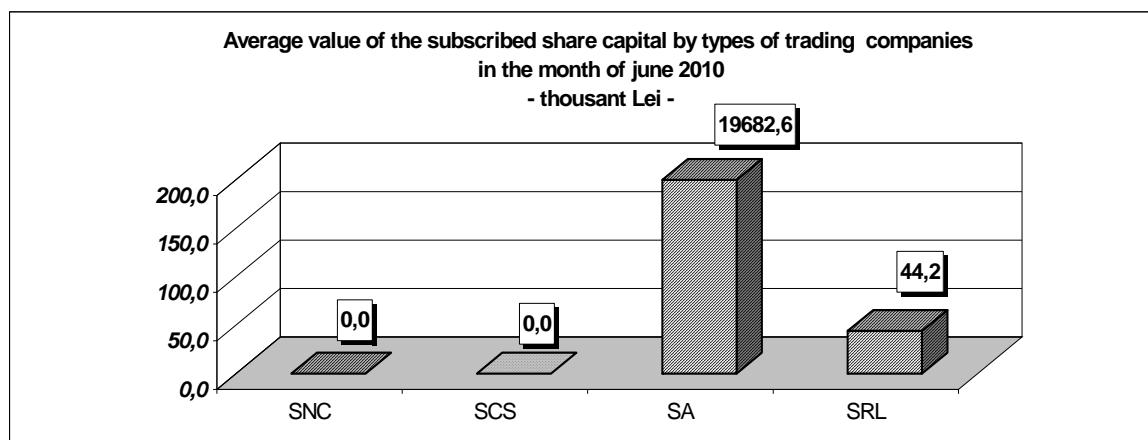


Table no. 10

Number of incorporated trading companies and the value of the subscribed share capital, by counties, in the month of June 2010

County	Total registered companies		Subscribed capital		Average subscribed capital on company
	No.	%	thousand Lei	%	thousand Lei
0	1	2	3	4	5
Total ROMÂNIA	4159	100,0	556365,0	100,0	134,3
ALBA	65	1,6	592,4	0,1	9,1
ARAD	81	1,9	480,5	0,1	5,9
ARGES	100	2,4	91,4	0,0	0,9
BACAU	72	1,7	165,7	0,0	2,3
BIHOR	139	3,3	120,1	0,0	0,9
BISTRITA-NASAUD	24	0,6	37,1	***	1,6
BOTOSANI	31	0,7	28,1	***	0,9
BRASOV	132	3,2	855,2	0,2	6,5
BRAILA	76	1,8	17,6	***	0,2
BUZAU	67	1,6	147,7	0,0	2,2
CARAS-SEVERIN	33	0,8	17,7	***	0,5
CALARASI	35	0,8	206,9	0,0	5,9
CLUJ	173	4,2	10749,5	1,9	62,1
CONSTANTA	196	4,7	113,8	0,0	0,6
COVASNA	23	0,6	96,3	0,0	4,4
DAMBOVITA	68	1,6	3361,3	0,6	49,4
DOLJ	116	2,8	827,9	0,1	7,1
GALATI	97	2,3	39,6	***	0,4
GIURGIU	59	1,4	461,9	0,1	8,0
GORJ	30	0,7	30,8	***	1,0
HARGHITA	28	0,7	9,3	***	0,3
HUNEDOARA	74	1,8	68,7	0,0	0,9
IALOMITA	47	1,1	375,6	0,1	8,0
IASI	145	3,5	8033,3	1,4	56,2
MARAMURES	62	1,5	86,5	0,0	1,4
MEHEDINTI	28	0,7	9721,5	1,7	347,2
MURES	70	1,7	50,9	***	0,7
NEAMT	77	1,9	136,4	0,0	1,8
OLT	46	1,1	163,0	0,0	3,5
PRAHOVA	135	3,2	2856,2	0,5	21,3
SALAJ	36	0,9	150,7	0,0	4,2
SATU MARE	57	1,4	2283,9	0,4	40,1
SIBIU	61	1,5	21,4	***	0,4
SUCEAVA	54	1,3	567,7	0,1	10,5
TELEORMAN	67	1,6	951,1	0,2	14,2
TIMIS	177	4,3	771,2	0,1	4,4
TULCEA	49	1,2	113,0	0,0	2,4
VASLUI	22	0,5	10,7	***	0,5
VALCEA	35	0,8	8,2	***	0,2
VRANCEA	46	1,1	11,5	***	0,2
MUN. BUCURESTI	967	23,3	443953,5	79,8	462,0
ILFOV	259	6,2	67579,0	12,1	260,9

Note: The average does not include filials because according to the Law no.31/1990 they are not juridical persons

*** Less than 0,01%

