



MINISTRY OF JUSTICE

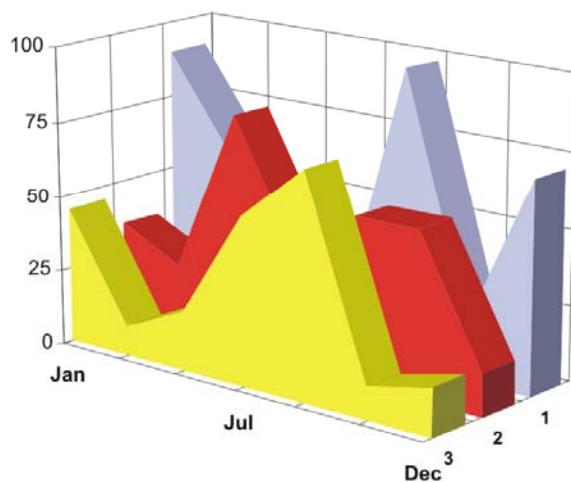
THE NATIONAL TRADE REGISTER OFFICE

București, Bd. Unirii nr. 74, Bl. J3b, tronson II+III, sector 3; Telefon: +40 21 316.08.04, 316.08.10; Fax: +40 21 316.08.03; Cod poștal: 030837
Website: www.onrc.ro; E-mail: onrc@onrc.ro; Cod Identificare Fiscală: 14942091

OPERATIONS IN THE CENTRAL TRADE REGISTER

STATISTIC SYNTHESIS

OF RECORDS IN THE CENTRAL TRADE REGISTER - 31th May 2010 - provisional data -



- ISSUE No. 222 -

MINISTRY OF JUSTICE THE NATIONAL TRADE REGISTER OFFICE

- Operations such as incorporation of trading companies, submission of changes, and strike-off are carried out based on Law No.26/1990, as republished, Law No.31/1990, as republished and on the Methodological Norms no. P/608/1998.
- This work reflects the evolution of the operations with the Trade Register Office attached to Bucharest Law Court and the Trade Register Offices attached to County Law Courts.
- The data contained in the Central Trade Register refer to operations for which law sets out the obligation of being registered in the trade registers kept by the 42 trade register offices attached to law courts.

• The content of this publication shall not be reproduced, partly or entirely, in original or modified form, and shall not be stored in a recovery system and shall not be transmitted in any form or by any means without prior written authorization of the Ministry of Justice – The National Trade Register Office.

• The content of this publication December be used in articles, studies, books, as supporting or explanatory data only by clearly and accurately indicating the source.

CONTENTS		Page
1	Definitions	1
<hr/>		
2.1	Data related to the period December 1990 –May 2010	3
<hr/>		
	Table no. 1 – Operations performed in the trade registers by categories of registration during December 1990 –May 2010, total by country and by counties, shares of counties in the total by country	3
	Table no. 2 – Operations performed in the trade registers by categories of registration during 1990 –May 2010, total by country and counties, share of categories of operations in the total of each county	4
	Table no. 3 – Number and structure of incorporations in the trade registers during 1990-May 2010	5
	Chart no. 1 – Structure by years of incorporations in the trade register	
	Table no. 4 – Number of incorporations in the trade registers by counties and capital sources during 1990 - May 2010	6
	Table no. 5 – Number of incorporations in the trade registers by counties and business categories during 1990 –May 2010	7
<hr/>		
2.2	Data related to May 2010	8
<hr/>		
	Table no. 6 – Operations performed in the trade registers by counties and categories of registrations in the month of May 2010	8
	Table no. 7 – Number of incorporations in the trade registers by counties and capital sources in the month of May 2010	9
	Table no. 8 – Number of incorporations in the trade registers by counties and business categories in the month of May 2010	10
	Table no. 9 –Number of incorporations in the trade registers by domains of activity and business categories in the month of May 2010	11-12
	Table no. 10 – Number of incorporated trading companies and the value of subscribed share capital, by counties, in the month of May 2010	13
	Table no. 11– Number of incorporated trading companies and the value of subscribed share capital by legal forms, in the month of May 2010	14
	Chart no. 5 – Average value of subscribed share capital by types of trading companies in the month of May 2010	14

Definitions

The Trade Register Office was established based on Law No. 26/1990, as republished and subsequently amended and supplemented, operates as an active institution since 1990 and is twofold structured:

- at national level, represented by the National Trade Register Office organized under the authority of the Ministry of Justice
- at local level, represented by the 42 Trade Register Offices attached to Law Courts, organized under the subordination of the National Trade Register Office

Categories of persons liable to registration in the trade register:

- natural persons: authorized natural persons, individual enterprises and family enterprises currently carrying on trading activities;
 - legal persons represented by: Trading Companies, National Societies and Companies, National R&D Institutes, Autonomous Administrations, Co-operative Societies, Agricultural Co-operatives, Co-operative Organizations, Economic Interest Groupings, European Economic Interest Groupings, European Societies, European Co-operative Societies, branches of trading companies with legal establishment, operation and incorporation regime of trading company legal form under which they were incorporated.
- **Terms used in tables and charts**
 - **Number of companies**, depending on the table, represents the number of trading companies incorporated during the reference period, the number of trading companies struck-off from the trade register. The following forms of organization are included: limited liability companies, joint-stock companies, limited partnerships by share, limited partnerships, general partnerships, and branches thereof.
 - **Value of subscribed share capital:**
 - **total, expressed in national currency:** the share capital value resulted by adding up the subscribed values (in cash and in kind) in national currency (lei)

- **Regions of economic development:**

<i>North-East:</i>	Suceava, Botoșani, Neamț, Iași, Bacău, Vaslui.
<i>South-East:</i>	Vrancea, Galați, Buzău, Brăila, Tulcea, Constanța.
<i>South-Muntenia:</i>	Argeș, Dâmbovița, Prahova, Teleorman, Giurgiu, Călărași, Ialomița.
<i>South-West Oltenia:</i>	Gorj, Vâlcea, Dolj, Mehedinți, Olt.
<i>West:</i>	Arad, Caraș-Severin, Hunedoara, Timiș.
<i>North-West:</i>	Bihor, Bistrița, Cluj, Satu Mare, Sălaj, Maramureș.
<i>Center:</i>	Alba, Brașov, Covasna, Harghita, Mureș, Sibiu.
<i>Bucharest-Ilfov:</i>	București, Ilfov.

NACE Code – The classification of economic activities in the national economy was approved by GO No. 656/1997, amended by Order No 601/2002 and Order no. 337/2007 of the President of the National Institute of Statistics, and complies with the international classification used in statistic reports and official documents. The activities are ranked by the harmonization principle, by sections, divisions, groups and classes.

Abbreviations

- **PF** - Natural Person; the following forms of organization are included in this category: natural persons and family associations registered until 25.04.2008, authorized natural persons, individual enterprises and family enterprises.
- **SNC** - General Partnership
- **SCS** - Limited Partnership
- **SCA** - Limited Partnership by Share
- **SA** - Joint-Stock Company
- **SRL** - Limited Liability Company
- **RA** - Autonomous Administration
- **APJ** - Other legal persons having the obligation to register in the trade register: National R&D Institutes, Economic Interest Groupings, European Economic Interest Groupings, European Societies, European Co-operative Societies, Agricultural Co-operatives, Co-operative Organizations.

Sources of Information:

The integrated IT system of the trade register is designed by The National Trade Register Office in compliance with the provisions of the related legislation in force. The source of information consists of the trade registers organized in computerized system, kept by the trade register offices attached to law courts.

Table no. 1

**Operations performed in the trade registers by categories of registration during
December 1990 – May 2010, total by country and by counties, share of counties in
the total by country**

Counties	Total of registered operations		out of which :					
			Registered companies		Changes in statutory documents		Strike off companies	
	No.	%	No.	%	No.	%	No.	%
0	1	2	3	4	7	8	11	12
Total ROMÂNIA	13887796	100,0	2013992	100,0	11160375	100,0	713429	100,0
ALBA	206368	1,5	32459	1,6	165791	1,5	8118	1,1
ARAD	331840	2,4	49149	2,4	263431	2,4	19260	2,7
ARGES	335324	2,4	51287	2,5	270895	2,4	13142	1,8
BACAU	322982	2,3	50190	2,5	251544	2,3	21248	3,0
BIHOR	421384	3,0	62421	3,1	340078	3,0	18885	2,6
BISTRITA-NASAUD	166443	1,2	24971	1,2	132360	1,2	9112	1,3
BOTOSANI	124816	0,9	24637	1,2	92906	0,8	7273	1,0
BRASOV	549096	4,0	62755	3,1	465991	4,2	20350	2,9
BRAILA	213385	1,5	28054	1,4	178709	1,6	6622	0,9
BUZAU	243274	1,8	36257	1,8	191467	1,7	15550	2,2
CARAS-SEVERIN	160703	1,2	24336	1,2	126180	1,1	10187	1,4
CALARASI	122792	0,9	20299	1,0	96469	0,9	6024	0,8
CLUJ	603971	4,3	92935	4,6	489176	4,4	21860	3,1
CONSTANTA	594176	4,3	83250	4,1	476336	4,3	34590	4,8
COVASNA	120096	0,9	17329	0,9	96913	0,9	5854	0,8
DAMBOVITA	202586	1,5	37452	1,9	146835	1,3	18299	2,6
DOLJ	374137	2,7	52923	2,6	301305	2,7	19909	2,8
GALATI	352410	2,5	47773	2,4	286827	2,6	17810	2,5
GIURGIU	108226	0,8	16779	0,8	85435	0,8	6012	0,8
GORJ	214169	1,5	23716	1,2	181622	1,6	8831	1,2
HARGHITA	209118	1,5	31450	1,6	167638	1,5	10030	1,4
HUNEDOARA	281899	2,0	40820	2,0	223808	2,0	17271	2,4
IALOMITA	125845	0,9	18788	0,9	100030	0,9	7027	1,0
IASI	463967	3,3	66792	3,3	375002	3,4	22173	3,1
MARAMURES	283162	2,0	50918	2,5	217419	1,9	14825	2,1
MEHEDINTI	143289	1,0	22383	1,1	110653	1,0	10253	1,4
MURES	389278	2,8	50308	2,5	319031	2,9	19939	2,8
NEAMT	300022	2,2	43031	2,1	237385	2,1	19606	2,7
OLT	169070	1,2	27805	1,4	128939	1,2	12326	1,7
PRAHOVA	467689	3,4	67277	3,3	378669	3,4	21743	3,0
SALAJ	122712	0,9	20078	1,0	94720	0,8	7914	1,1
SATU MARE	213971	1,5	34235	1,7	167496	1,5	12240	1,7
SIBIU	301898	2,2	39714	2,0	250546	2,2	11638	1,6
SUCEAVA	324606	2,3	49779	2,5	254840	2,3	19987	2,8
TELEORMAN	144862	1,0	23095	1,1	116077	1,0	5690	0,8
TIMIS	461185	3,3	71556	3,6	368361	3,3	21268	3,0
TULCEA	166750	1,2	20486	1,0	137360	1,2	8904	1,2
VASLUI	171308	1,2	25071	1,2	133831	1,2	12406	1,7
VALCEA	215783	1,6	32458	1,6	168380	1,5	14945	2,1
VRANCEA	171840	1,2	24533	1,2	139740	1,3	7567	1,1
MUN. BUCURESTI	2767615	19,9	375797	18,7	2254915	20,2	136903	19,2
ILFOV	223748	1,6	38645	1,9	175265	1,6	9838	1,4

Table no. 2

**Operations performed in the trade registers during December 1990 – May 2010,
total by country and counties, share of categories of operations in the total of
each county**

Counties	Total of registered operations		out of which :					
			Registered companies		Changes in statutory documents		Strike off companies	
	No.	%	No.	%	No.	%	No.	%
0	1	2	3	4	7	8	11	12
Total ROMÂNIA	13887796	100,0	2013992	14,5	11160375	80,4	713429	5,1
ALBA	206368	100,0	32459	15,7	165791	80,3	8118	3,9
ARAD	331840	100,0	49149	14,8	263431	79,4	19260	5,8
ARGES	335324	100,0	51287	15,3	270895	80,8	13142	3,9
BACAU	322982	100,0	50190	15,5	251544	77,9	21248	6,6
BIHOR	421384	100,0	62421	14,8	340078	80,7	18885	4,5
BISTRITA-NASAUD	166443	100,0	24971	15,0	132360	79,5	9112	5,5
BOTOSANI	124816	100,0	24637	19,7	92906	74,4	7273	5,8
BRASOV	549096	100,0	62755	11,4	465991	84,9	20350	3,7
BRAILA	213385	100,0	28054	13,1	178709	83,7	6622	3,1
BUZAU	243274	100,0	36257	14,9	191467	78,7	15550	6,4
CARAS-SEVERIN	160703	100,0	24336	15,1	126180	78,5	10187	6,3
CALARASI	122792	100,0	20299	16,5	96469	78,6	6024	4,9
CLUJ	603971	100,0	92935	15,4	489176	81,0	21860	3,6
CONSTANTA	594176	100,0	83250	14,0	476336	80,2	34590	5,8
COVASNA	120096	100,0	17329	14,4	96913	80,7	5854	4,9
DAMBOVITA	202586	100,0	37452	18,5	146835	72,5	18299	9,0
DOLJ	374137	100,0	52923	14,1	301305	80,5	19909	5,3
GALATI	352410	100,0	47773	13,6	286827	81,4	17810	5,1
GIURGIU	108226	100,0	16779	15,5	85435	78,9	6012	5,6
GORJ	214169	100,0	23716	11,1	181622	84,8	8831	4,1
HARGHITA	209118	100,0	31450	15,0	167638	80,2	10030	4,8
HUNEDOARA	281899	100,0	40820	14,5	223808	79,4	17271	6,1
IALOMITA	125845	100,0	18788	14,9	100030	79,5	7027	5,6
IASI	463967	100,0	66792	14,4	375002	80,8	22173	4,8
MARAMURES	283162	100,0	50918	18,0	217419	76,8	14825	5,2
MEHEDINTI	143289	100,0	22383	15,6	110653	77,2	10253	7,2
MURES	389278	100,0	50308	12,9	319031	82,0	19939	5,1
NEAMT	300022	100,0	43031	14,3	237385	79,1	19606	6,5
OLT	169070	100,0	27805	16,4	128939	76,3	12326	7,3
PRAHOVA	467689	100,0	67277	14,4	378669	81,0	21743	4,6
SALAJ	122712	100,0	20078	16,4	94720	77,2	7914	6,4
SATU MARE	213971	100,0	34235	16,0	167496	78,3	12240	5,7
SIBIU	301898	100,0	39714	13,2	250546	83,0	11638	3,9
SUCEAVA	324606	100,0	49779	15,3	254840	78,5	19987	6,2
TELEORMAN	144862	100,0	23095	15,9	116077	80,1	5690	3,9
TIMIS	461185	100,0	71556	15,5	368361	79,9	21268	4,6
TULCEA	166750	100,0	20486	12,3	137360	82,4	8904	5,3
VASLUI	171308	100,0	25071	14,6	133831	78,1	12406	7,2
VALCEA	215783	100,0	32458	15,0	168380	78,0	14945	6,9
VRANCEA	171840	100,0	24533	14,3	139740	81,3	7567	4,4
MUN. BUCURESTI	2767615	100,0	375797	13,6	2254915	81,5	136903	4,9
ILFOV	223748	100,0	38645	17,3	175265	78,3	9838	4,4

Table no.3

Number and structure of incorporations in the trade registers during December 1990 - May 2010

Period (year, month)	Registered companies		Percentage	
	No.	%	%	
0	1	2	3	
Total, 31 May 2010, out of which	2013992	100,00		
Year 1990	81	0,00		
Year 1991	95840	4,76		
Year 1992	137456	6,83		
Year 1993	117078	5,81		
Year 1994	137445	6,82		
Year 1995	65479	3,25		
Year 1996	62089	3,08		
Year 1997	55663	2,76		
Year 1998	63878	3,17		
Year 1999	57197	2,84		
Year 2000	57268	2,84		
Year 2001	61265	3,04		
Year 2002	84780	4,21		
Year 2003	123582	6,14		
Year 2004	144284	7,16		
Year 2005	159464	7,92		
Year 2006	135371	6,72		
Year 2007	144728	7,19		
Year 2008	144173	7,16		
Year 2009	116037	5,76		
Year 2010 (I - XII) out of which :	50834		100,0	
January	7739		15,22	
February	9623		18,93	
March	11893		23,40	
April	10273		20,21	
May	11306		22,24	

Note: Column 2 reveals the annual structure of incorporations; column 3 reveals the structure by months during the current year.

Diagram no.1

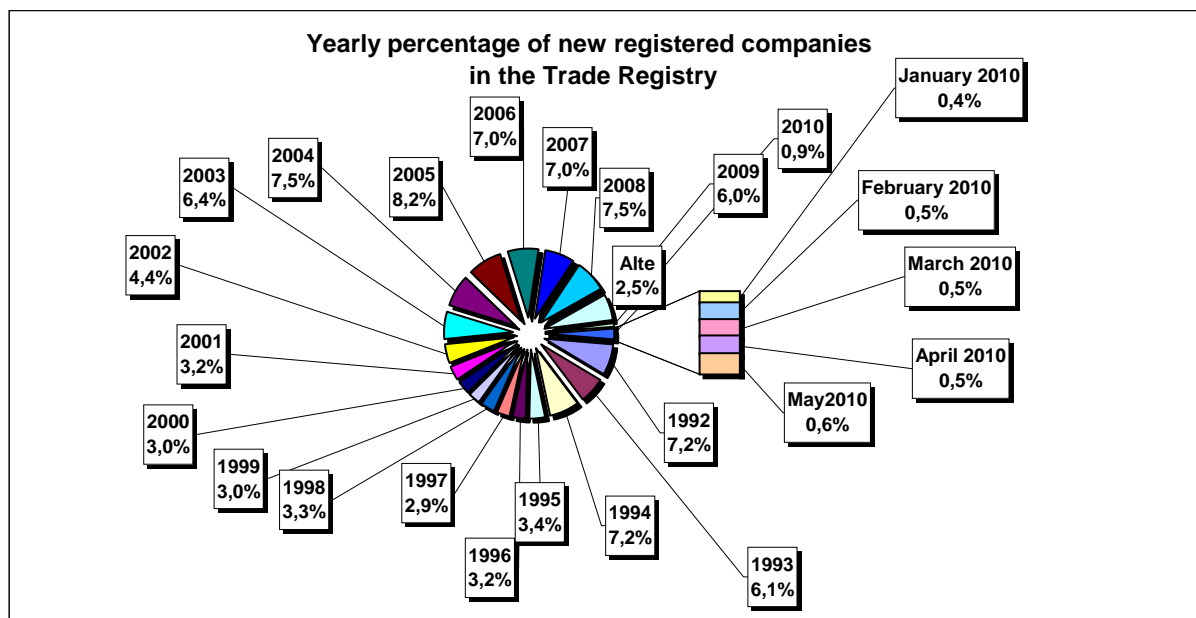


Table no. 4

**Number of incorporations in the trade registers by counties and capital sources during
December 1990 - May 2010**

Counties	Total		out of which:						Ranking by: *	
			Private capital				State majority capital			Mixed capital (state+private)
			out of which:				out of which:			
			PF	Companies	SC	APJ	RA	Companies		Companies
No.	%	No.	No.	No.	No.	No.	No.	No.		
0	1	2	3	4	5	6	6	7	8	9
Total ROMÂNIA	2013992	100,0	570276	1423556	2038	5676	1390	2397	8666	X
ALBA	32459	1,6	12163	19857	36	148	38	47	170	24
ARAD	49149	2,4	19227	29285	60	170	30	42	336	15
ARGES	51287	2,5	17037	33816	48	174	29	30	153	10
BACAU	50190	2,5	17734	31844	150	160	35	42	226	13
BIHOR	62421	3,1	17537	44258	63	152	40	62	309	8
BISTRITA-NASAUD	24971	1,2	9385	15275	46	99	28	29	109	30
BOTOSANI	24637	1,2	11818	12291	40	172	21	176	119	31
BRASOV	62747	3,1	15109	47147	58	125	49	87	172	7
BRAILA	28062	1,4	8426	19252	42	100	30	45	167	27
BUZAU	36257	1,8	11329	24528	46	153	28	42	131	22
CARAS-SEVERIN	24336	1,2	8710	15236	42	106	39	65	138	33
CALARASI	20299	1,0	6538	13455	22	89	18	77	100	38
CLUJ	92935	4,6	25766	66591	62	158	52	42	264	2
CONSTANTA	83250	4,1	17642	64666	87	210	51	51	543	3
COVASNA	17329	0,9	6730	10323	41	70	24	32	109	41
DAMBOVITA	37452	1,9	17350	19672	32	138	30	75	155	21
DOLJ	52923	2,6	12553	39862	39	168	40	58	203	9
GALATI	47773	2,4	11590	35785	35	139	30	51	143	16
GIURGIU	16779	0,8	4181	12257	15	84	23	109	110	42
GORJ	23716	1,2	6411	16861	26	184	51	83	100	34
HARGHITA	31450	1,6	13909	17087	64	91	24	43	232	26
HUNEDOARA	40820	2,0	11613	28667	33	84	42	95	286	18
IALOMITA	18788	0,9	7380	11146	27	83	15	46	91	40
IASI	66792	3,3	21791	44299	87	168	34	71	344	6
MARAMURES	50918	2,5	21138	29407	43	128	38	41	124	11
MEHEDINTI	22383	1,1	7964	14168	19	88	19	27	98	36
MURES	50308	2,5	19658	30190	68	159	30	34	169	12
NEAMT	43031	2,1	16407	26167	66	165	30	30	166	17
OLT	27805	1,4	10953	16446	27	166	26	64	123	28
PRAHOVA	67277	3,3	22256	44372	67	184	52	74	272	5
SALAJ	20078	1,0	8306	11510	41	110	19	28	64	39
SATU MARE	34235	1,7	12097	21804	41	98	20	42	134	23
SIBIU	39714	2,0	11460	27793	37	120	34	109	161	19
SUCEAVA	49779	2,5	23827	25354	73	208	31	65	221	14
TELEORMAN	23095	1,1	8492	14161	33	160	21	46	182	35
TIMIS	71556	3,6	13561	57314	69	154	38	69	351	4
TULCEA	20486	1,0	7649	12461	36	67	19	42	212	37
VASLUI	25071	1,2	12352	12394	22	110	16	41	136	29
VALCEA	32458	1,6	13395	18633	64	170	42	39	115	25
VRANCEA	24533	1,2	7991	16235	35	114	17	27	114	32
MUN. BUCURESTI	375797	18,7	35452	338766	64	153	116	106	1141	1
ILFOV	38645	1,9	5389	32921	31	97	21	13	173	20

*) The total number of incorporations (col 1)

Table no. 5

**Number of incorporations in the trade registers by counties and business categories
during December 1990 – May 2010**

County	Total		out of which:							
			PF	companies: 1434619				RA	SC	APJ
	SNC	SCS		SRL	SA					
	No.	%	No.	No.	No.	No.	No.	No.	No.	
0	1	2	3	4	5	6	7	8	9	10
Total ROMÂNIA	2013992	100,0	570276	32679	1609	1366543	33781	1390	2038	5676
ALBA	32459	1,6	12163	890	11	18599	574	38	36	148
ARAD	49149	2,4	19227	54	13	28893	702	30	60	170
ARGES	51287	2,5	17037	107	15	33036	841	29	48	174
BACAU	50190	2,5	17734	1299	4	30061	747	35	150	160
BIHOR	62421	3,1	17537	127	47	43525	930	40	63	152
BISTRITA-NASAUD	24971	1,2	9385	146	22	14823	422	28	46	99
BOTOSANI	24637	1,2	11818	468	1	11656	461	21	40	172
BRASOV	62755	3,1	15109	239	20	46262	893	49	58	125
BRAILA	28054	1,4	8426	376	12	18531	537	30	42	100
BUZAU	36257	1,8	11329	3747	46	20315	593	28	46	153
CARAS-SEVERIN	24336	1,2	8710	118	9	14837	475	39	42	106
CALARASI	20299	1,0	6538	609	3	12658	362	18	22	89
CLUJ	92935	4,6	25766	2112	21	63416	1348	52	62	158
CONSTANTA	83250	4,1	17642	311	23	63400	1526	51	87	210
COVASNA	17329	0,9	6730	148	4	10003	309	24	41	70
DAMBOVITA	37452	1,9	17350	60	8	19330	504	30	32	138
DOLJ	52923	2,6	12553	1560	8	37643	912	40	39	168
GALATI	47773	2,4	11590	1574	6	33534	865	30	35	139
GIURGIU	16779	0,8	4181	35	8	12103	330	23	15	84
GORJ	23716	1,2	6411	29	1	16508	506	51	26	184
HARGHITA	31450	1,6	13909	62	7	16792	501	24	64	91
HUNEDOARA	40820	2,0	11613	1166	98	27088	696	42	33	84
IALOMITA	18788	0,9	7380	269	12	10647	355	15	27	83
IASI	66792	3,3	21791	508	111	43058	1035	34	87	168
MARAMURES	50918	2,5	21138	1927	23	27013	608	38	43	128
MEHEDINTI	22383	1,1	7964	427	3	13521	342	19	19	88
MURES	50308	2,5	19658	37	34	29638	684	30	68	159
NEAMT	43031	2,1	16407	3293	30	22353	687	30	66	165
OLT	27805	1,4	10953	1611	1	14518	503	26	27	166
PRAHOVA	67277	3,3	22256	3122	15	40644	937	52	67	184
SALAJ	20078	1,0	8306	600	4	10698	300	19	41	110
SATU MARE	34235	1,7	12097	283	9	21206	481	20	41	98
SIBIU	39714	2,0	11460	778	49	26556	680	34	37	120
SUCEAVA	49779	2,5	23827	438	8	24595	599	31	73	208
TELEORMAN	23095	1,1	8492	272	399	13284	434	21	33	160
TIMIS	71556	3,6	13561	616	34	55792	1292	38	69	154
TULCEA	20486	1,0	7649	1363	114	10754	484	19	36	67
VASLUI	25071	1,2	12352	90	13	12044	424	16	22	110
VALCEA	32458	1,6	13395	364	6	17910	507	42	64	170
VRANCEA	24533	1,2	7991	356	10	15544	466	17	35	114
MUN. BUCURESTI	375797	18,7	35452	1038	314	331411	7249	116	64	153
ILFOV	38645	1,9	5389	50	33	32344	680	21	31	97

Table no. 6

Operations performed in the trade registers by counties and categories of registration in the month of May 2010

County	Total of operations carried on		out of which:					
			New incorporations		Changes in statutory documents		Strike off companies	
	No.	%	No.	%	No.	%	No.	%
0	1	2	3	4	5	6	9	10
Total ROMÂNIA	596250	100,0	11306	1,9	513614	86,1	71330	12,0
ALBA	7304	100,0	259	3,5	6956	95,2	89	1,2
ARAD	23228	100,0	332	1,4	17015	73,3	5881	25,3
ARGES	12803	100,0	280	2,2	11877	92,8	646	5,0
BACAU	19858	100,0	268	1,3	13472	67,8	6118	30,8
BIHOR	16633	100,0	416	2,5	16067	96,6	150	0,9
BISTRITA-NASAUD	7194	100,0	165	2,3	5993	83,3	1036	14,4
BOTOSANI	3108	100,0	169	5,4	2832	91,1	107	3,4
BRASOV	26468	100,0	291	1,1	21766	82,2	4411	16,7
BRAILA	6394	100,0	170	2,7	5746	89,9	478	7,5
BUZAU	11147	100,0	173	1,6	8648	77,6	2326	20,9
CARAS-SEVERIN	4688	100,0	124	2,6	4480	95,6	84	1,8
CALARASI	3631	100,0	140	3,9	3438	94,7	53	1,5
CLUJ	13765	100,0	528	3,8	12935	94,0	302	2,2
CONSTANTA	29747	100,0	422	1,4	25243	84,9	4082	13,7
COVASNA	4354	100,0	122	2,8	4169	95,8	63	1,4
DAMBOVITA	10561	100,0	218	2,1	8066	76,4	2277	21,6
DOLJ	19507	100,0	386	2,0	15466	79,3	3655	18,7
GALATI	11672	100,0	286	2,5	11286	96,7	100	0,9
GIURGIU	3962	100,0	109	2,8	3818	96,4	35	0,9
GORJ	7368	100,0	178	2,4	6186	84,0	1004	13,6
HARGHITA	10703	100,0	166	1,6	8012	74,9	2525	23,6
HUNEDOARA	12389	100,0	236	1,9	10431	84,2	1722	13,9
IALOMITA	3705	100,0	142	3,8	3515	94,9	48	1,3
IASI	22675	100,0	501	2,2	17843	78,7	4331	19,1
MARAMURES	11305	100,0	253	2,2	9469	83,8	1583	14,0
MEHEDINTI	6409	100,0	106	1,7	4941	77,1	1362	21,3
MURES	18964	100,0	261	1,4	15563	82,1	3140	16,6
NEAMT	12231	100,0	197	1,6	9497	77,6	2537	20,7
OLT	9177	100,0	146	1,6	7497	81,7	1534	16,7
PRAHOVA	16390	100,0	401	2,4	14886	90,8	1103	6,7
SALAJ	6364	100,0	128	2,0	4955	77,9	1281	20,1
SATU MARE	7065	100,0	186	2,6	6827	96,6	52	0,7
SIBIU	11391	100,0	221	1,9	11063	97,1	107	0,9
SUCEAVA	9298	100,0	266	2,9	8930	96,0	102	1,1
TELEORMAN	3602	100,0	139	3,9	3433	95,3	30	0,8
TIMIS	21721	100,0	346	1,6	21192	97,6	183	0,8
TULCEA	9223	100,0	101	1,1	6686	72,5	2436	26,4
VASLUI	8910	100,0	108	1,2	6209	69,7	2593	29,1
VALCEA	14019	100,0	168	1,2	10411	74,3	3440	24,5
VRANCEA	8037	100,0	106	1,3	6548	81,5	1383	17,2
MUN. BUCURESTI	118941	100,0	1686	1,4	111675	93,9	5580	4,7
ILFOV	10339	100,0	406	3,9	8572	82,9	1361	13,2

*) by effect of implementation of Law no. 314/2001, art.1 and art. 6

Table no.7

Number of incorporations in the trade registers by counties and capital sources in the month of May 2010

County	Total		out of which:						Rnking by: *	
			Private capital				State majority capital			Mixed capital (state+private)
			out of which:				out of which:			
			PF	Companies	SC	APJ	RA	Compani es		Companies
No.	%	No.	No.	No.		No.	No.	No.		
0	1	2	3	4	5	6	7	8	9	
Total ROMÂNIA	11306	100,0	7049	4227		28		2		X
ALBA	259	2,3	194	65						17
ARAD	332	2,9	257	75						10
ARGES	280	2,5	177	103						13
BACAU	268	2,4	193	75						14
BIHOR	416	3,7	299	116		1				5
BISTRITA-NASAUD	165	1,5	97	68						30
BOTOSANI	169	1,5	131	29		8		1		27
BRASOV	291	2,6	180	109		2				11
BRAILA	170	1,5	112	58						26
BUZAU	173	1,5	113	59		1				25
CARAS-SEVERIN	124	1,1	73	51						36
CALARASI	140	1,2	90	49		1				33
CLUJ	528	4,7	356	172						2
CONSTANTA	422	3,7	229	192		1				4
COVASNA	122	1,1	96	26						37
DAMBOVITA	218	1,9	163	55						21
DOLJ	386	3,4	263	122		1				8
GALATI	286	2,5	191	95						12
GIURGIU	109	1,0	52	57						38
GORJ	178	1,6	142	36						24
HARGHITA	166	1,5	139	27						29
HUNEDOARA	236	2,1	153	82		1				19
IALOMITA	142	1,3	86	56						32
IASI	501	4,4	354	145		2				3
MARAMURES	253	2,2	191	60		2				18
MEHEDINTI	106	0,9	74	31		1				40
MURES	261	2,3	201	60						16
NEAMT	197	1,7	148	49						22
OLT	146	1,3	92	54						31
PRAHOVA	401	3,5	261	140						7
SALAJ	128	1,1	104	24						35
SATU MARE	186	1,6	128	56		2				23
SIBIU	221	2,0	152	69						20
SUCEAVA	266	2,4	177	85		4				15
TELEORMAN	139	1,2	94	45						34
TIMIS	346	3,1	188	158						9
TULCEA	101	0,9	57	44						42
VASLUI	108	1,0	89	19						39
VALCEA	168	1,5	129	39						28
VRANCEA	106	0,9	66	40						41
MUN. BUCURESTI	1686	14,9	648	1037				1		1
ILFOV	406	3,6	110	295		1				6

*) The total number of incorporations (col 1)

*** Less than 0,01%

Table no.8

**Number of incorporations in the trade registers by counties and
business categories in the month of May 2010**

County	Total		out of which:						APJ	
			PF	companies: 4229				RA		SC
	SNC	SCS		SRL	SA	No.	No.			
	No.	%	No.	No.	No.			No.		No.
0	1	2	3	4	5	6	7	8	9	
Total ROMÂNIA	11306	100,0	7049	1	1	4206	21			28
ALBA	259	2,3	194			65				
ARAD	332	2,9	257			75				
ARGES	280	2,5	177			103				
BACAU	268	2,4	193			75				
BIHOR	416	3,7	299			116				1
BISTRITA-NASAUD	165	1,5	97			68				
BOTOSANI	169	1,5	131			29	1			8
BRASOV	291	2,6	180			108	1			2
BRAILA	170	1,5	112			58				
BUZAU	173	1,5	113			59				1
CARAS-SEVERIN	124	1,1	73			51				
CALARASI	140	1,2	90			48	1			1
CLUJ	528	4,7	356			171	1			
CONSTANTA	422	3,7	229			192				1
COVASNA	122	1,1	96			26				
DAMBOVITA	218	1,9	163			55				
DOLJ	386	3,4	263			122				1
GALATI	286	2,5	191			95				
GIURGIU	109	1,0	52			57				
GORJ	178	1,6	142			36				
HARGHITA	166	1,5	139			26	1			
HUNEDOARA	236	2,1	153			82				1
IALOMITA	142	1,3	86			56				
IASI	501	4,4	354			145				2
MARAMURES	253	2,2	191			60				2
MEHEDINTI	106	0,9	74			31				1
MURES	261	2,3	201			60				
NEAMT	197	1,7	148			49				
OLT	146	1,3	92			54				
PRAHOVA	401	3,5	261			138	2			
SALAJ	128	1,1	104			24				
SATU MARE	186	1,6	128			56				2
SIBIU	221	2,0	152			69				
SUCEAVA	266	2,4	177			85				4
TELEORMAN	139	1,2	94			45				
TIMIS	346	3,1	188		1	156	1			
TULCEA	101	0,9	57			44				
VASLUI	108	1,0	89			19				
VALCEA	168	1,5	129			39				
VRANCEA	106	0,9	66			40				
MUN. BUCURESTI	1686	14,9	648			1026	12			
ILFOV	406	3,6	110	1		293	1			1

Table no. 9

**Number of incorporations in the trade registers by domains of activity and business categories in
the month of May 2010**

CAEN seg.	Field of activity	Total		out of which:							
				PF	companies: 4229				RA	SC	APJ
		No.	%		SNC	SCS	SRL	SA			
				No.	No.	No.	No.	No.	No.	No.	
0	1	2	3	4	5	6	7	8	9	10	11
	Total ROMÂNIA	11306	100,0	7049	1	1	4206	21			28
1	Agriculture, hunting and related service activities	1678	14,8	1414			245	1			18
2	Forestry and logging	57	0,5	16		1	40				
3	Fishing and aquaculture	99	0,9	87			12				
5	Mining of hard and brown coal										
6	Extraction of crude petroleum and natural gas	3	0,0				3				
7	Mining of metal ores										
8	Other mining and quarrying	11	0,1	1			9	1			
9	Mining support service activities	1	0,0	1							
10	Manufacture of food products	133	1,2	59			73				1
11	Manufacture of beverages	18	0,2	14			4				
12	Manufacture of tobacco products										
13	Manufacture of textiles	12	0,1	5			7				
14	Manufacture of wearing apparel	58	0,5	31			27				
15	Tanning and dressing of leather; manufacture of luggage, handbags, saddlery, harness and footwear; dressing and dyeing of fur	27	0,2	12			15				
16	Manufacture of wood and of products of wood and cork, except furniture; manufacture of articles of straw and plaiting materials	98	0,9	53			45				
17	Manufacture of paper and paper products	13	0,1	1			12				
18	Printing and reproduction of recorded media	11	0,1	7			4				
19	Manufacture of coke and refined petroleum products	2	0,0	1			1				
20	Manufacture of chemicals and chemical products	7	0,1	2			5				
21	Manufacture of basic pharmaceutical products and pharmaceutical preparations	1	0,0				1				
22	Manufacture of rubber and plastic products	31	0,3	14			17				
23	Manufacture of other non-metallic mineral products	48	0,4	34			14				
24	Manufacture of basic metals	7	0,1	1			6				
25	Manufacture of fabricated metal products, except machinery and equipment	107	0,9	67			40				
26	Manufacture of computer, electronic and optical products	2	0,0				2				
27	Manufacture of electrical equipment	2	0,0				2				
28	Manufacture of machinery and equipment n.e.c.	8	0,1				8				
29	Manufacture of motor vehicles, trailers and semi-trailers	5	0,0	2			3				
30	Manufacture of other transport equipment	2	0,0				2				
31	Manufacture of furniture	41	0,4	21			20				
32	Other manufacturing	36	0,3	27			9				
33	Repair and installation of machinery and equipment	32	0,3	18			14				
35	Electricity, gas, steam and air conditioning supply	22	0,2				21	1			
36	Water collection, treatment and supply	3	0,0				3				
37	Sewerage	2	0,0				2				
38	Waste collection, treatment and disposal activities; materials recovery	48	0,4	7			41				
39	Remediation activities and other waste management services	1	0,0				1				
41	Construction of buildings	372	3,3	106			266				
42	Civil engineering	38	0,3	1			36	1			
43	Specialised construction activities	423	3,7	299			124				
45	Wholesale and retail trade and repair of motor vehicles and motorcycles	241	2,1	105			135	1			
46	Wholesale trade, except of motor vehicles and motorcycles	902	8,0	282			611				9
47	Retail trade, except of motor vehicles and motorcycles	2425	21,4	1705			719	1			
49	Land transport and transport via pipelines	418	3,7	207			211				
50	Water transport	6	0,1	4			2				

Table no. 10

Number of incorporated trading companies and the value of the subscribed share capital, by counties, in the month of May 2010

County	Total registered companies		Subscribed capital		Average subscribed capital on company
	No.	%	thousand Lei	%	thousand Lei
0	1	2	3	4	5
Total ROMÂNIA	4229	100,0	128300,9	100,0	30,4
ALBA	65	1,5	180,8	0,1	2,8
ARAD	75	1,8	198,5	0,2	2,6
ARGES	103	2,4	218,1	0,2	2,1
BACAU	75	1,8	67,4	0,1	0,9
BIHOR	116	2,7	4979,0	3,9	42,9
BISTRITA-NASAUD	68	1,6	62,5	0,0	0,9
BOTOSANI	30	0,7	148,4	0,1	4,9
BRASOV	109	2,6	1158,1	0,9	10,6
BRAILA	58	1,4	15,5	0,0	0,3
BUZAU	59	1,4	178,1	0,1	3,0
CARAS-SEVERIN	51	1,2	29,6	0,0	0,6
CALARASI	49	1,2	111,5	0,1	2,3
CLUJ	172	4,1	2337,8	1,8	13,7
CONSTANTA	192	4,5	6843,4	5,3	35,6
COVASNA	26	0,6	8,4	***	0,3
DAMBOVITA	55	1,3	45,2	0,0	0,8
DOLJ	122	2,9	363,7	0,3	3,0
GALATI	95	2,2	152,4	0,1	1,6
GIURGIU	57	1,3	380,1	0,3	6,7
GORJ	36	0,9	18,6	0,0	0,5
HARGHITA	27	0,6	906,9	0,7	33,6
HUNEDOARA	82	1,9	28,3	0,0	0,3
IALOMITA	56	1,3	534,9	0,4	9,7
IASI	145	3,4	209,2	0,2	1,4
MARAMURES	60	1,4	1111,6	0,9	18,5
MEHEDINTI	31	0,7	308,5	0,2	10,0
MURES	60	1,4	30,8	0,0	0,5
NEAMT	49	1,2	917,0	0,7	18,7
OLT	54	1,3	87,8	0,1	1,6
PRAHOVA	140	3,3	29451,1	23,0	210,4
SALAJ	24	0,6	35,9	0,0	1,5
SATU MARE	56	1,3	81,6	0,1	1,5
SIBIU	69	1,6	170,6	0,1	2,5
SUCEAVA	85	2,0	387,3	0,3	4,6
TELEORMAN	45	1,1	4236,0	3,3	94,1
TIMIS	158	3,7	1123,6	0,9	7,1
TULCEA	44	1,0	19,0	0,0	0,4
VASLUI	19	0,4	4,6	***	0,2
VALCEA	39	0,9	142,5	0,1	3,7
VRANCEA	40	0,9	12,8	***	0,3
MUN. BUCURESTI	1038	24,5	62016,3	48,3	60,3
ILFOV	295	7,0	8987,5	7,0	30,6

Note: The average does not include filials because according to the Law no.31/1990 they are not juridical persons

*** Less than 0,01%

Table no. 11

Number of incorporated trading companies and the value of the subscribed share capital by legal forms, in the month of May 2010

Company type	Total registered companies		Subscribed capital		Average subscribed capital on company
	No.	%	thousant Lei	%	thousant Lei
0	1	2	3	4	5
Total ROMÂNIA	4229	100,0	128300,9	100,0	30,4
SNC	1	0,0	0,2	***	
SCS	1	0,0	2,0	***	
SA	21	0,5	69455,0	54,1	5787,9
SRL	4206	99,5	58843,7	45,9	14,0

Note: The average does not include filials because according to the Law no.31/1990 they are not juridical persons

*** Less than 0,01%

Diagram no.5

