



MINISTRY OF JUSTICE

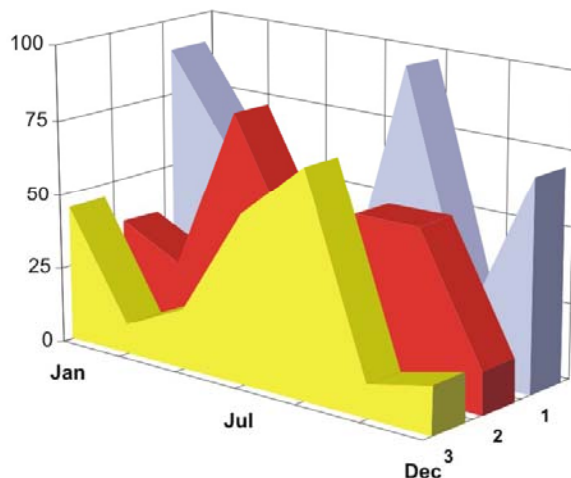
THE NATIONAL TRADE REGISTER OFFICE

București, Bd. Unirii nr. 74, Bl. J3b, tronson II+III, sector 3; Telefon: +40 21 316.08.04, 316.08.10; Fax: +40 21 316.08.03; Cod poștal: 030837
Website: www.onrc.ro; E-mail: onrc@onrc.ro; Cod Identificare Fiscală: 14942091

OPERATIONS IN THE CENTRAL TRADE REGISTER

STATISTIC SYNTHESIS

OF RECORDS IN THE CENTRAL TRADE REGISTER - 30th April 2010 - provisional data -



- ISSUE No. 221 -

MINISTRY OF JUSTICE THE NATIONAL TRADE REGISTER OFFICE

- Operations such as incorporation of trading companies, submission of changes, and strike-off are carried out based on Law No.26/1990, as republished, Law No.31/1990, as republished and on the Methodological Norms no. P/608/1998.
- This work reflects the evolution of the operations with the Trade Register Office attached to Bucharest Law Court and the Trade Register Offices attached to County Law Courts.
- The data contained in the Central Trade Register refer to operations for which law sets out the obligation of being registered in the trade registers kept by the 42 trade register offices attached to law courts.

• The content of this publication shall not be reproduced, partly or entirely, in original or modified form, and shall not be stored in a recovery system and shall not be transmitted in any form or by any means without prior written authorization of the Ministry of Justice – The National Trade Register Office.

• The content of this publication December be used in articles, studies, books, as supporting or explanatory data only by clearly and accurately indicating the source.

CONTENTS

Page

1	Definitions	1
2.1	Data related to the period December 1990 –April 2010	3
Table no. 1 – Operations performed in the trade registers by categories of registration during December 1990 –April 2010, total by country and by counties, shares of counties in the total by country		3
Table no. 2 – Operations performed in the trade registers by categories of registration during 1990 –April 2010, total by country and counties, share of categories of operations in the total of each county		4
Table no. 3 – Number and structure of incorporations in the trade registers during 1990-April 2010		5
Chart no. 1 – Structure by years of incorporations in the trade register		
Table no. 4 – Number of incorporations in the trade registers by counties and capital sources during 1990 - April 2010		6
Table no. 5 – Number of incorporations in the trade registers by counties and business categories during 1990 –April 2010		7
2.2 Data related to April 2010		8
Table no. 6 – Operations performed in the trade registers by counties and categories of registrations in the month of April 2010		8
Table no. 7 – Number of incorporations in the trade registers by counties and capital sources in the month of April 2010		9
Table no. 8 – Number of incorporations in the trade registers by counties and business categories in the month of April 2010		10
Table no. 9 –Number of incorporations in the trade registers by domains of activity and business categories in the month of April 2010		11-12
Table no. 10 – Number of incorporated trading companies and the value of subscribed share capital, by counties, in the month of April 2010		13
Table no. 11– Number of incorporated trading companies and the value of subscribed share capital by legal forms, in the month of April 2010		14
Chart no. 5 – Average value of subscribed share capital by types of trading companies in the month of April 2010		14

Definitions

The Trade Register Office was established based on Law No. 26/1990, as republished and subsequently amended and supplemented, operates as an active institution since 1990 and is twofold structured:

- at national level, represented by the National Trade Register Office organized under the authority of the Ministry of Justice
- at local level, represented by the 42 Trade Register Offices attached to Law Courts, organized under the subordination of the National Trade Register Office

Categories of persons liable to registration in the trade register:

- natural persons: authorized natural persons, individual enterprises and family enterprises currently carrying on trading activities;
 - legal persons represented by: Trading Companies, National Societies and Companies, National R&D Institutes, Autonomous Administrations, Co-operative Societies, Agricultural Co-operatives, Co-operative Organizations, Economic Interest Groupings, European Economic Interest Groupings, European Societies, European Co-operative Societies, branches of trading companies with legal establishment, operation and incorporation regime of trading company legal form under which they were incorporated.
- **Terms used in tables and charts**
 - **Number of companies**, depending on the table, represents the number of trading companies incorporated during the reference period, the number of trading companies struck-off from the trade register. The following forms of organization are included: limited liability companies, joint-stock companies, limited partnerships by share, limited partnerships, general partnerships, and branches thereof.
 - **Value of subscribed share capital:**
 - **total, expressed in national currency:** the share capital value resulted by adding up the subscribed values (in cash and in kind) in national currency (lei)

- **Regions of economic development:**

<i>North-East:</i>	Suceava, Botoșani, Neamț, Iași, Bacău, Vaslui.
<i>South-East:</i>	Vrancea, Galați, Buzău, Brăila, Tulcea, Constanța.
<i>South-Muntenia:</i>	Argeș, Dâmbovița, Prahova, Teleorman, Giurgiu, Călărași, Ialomița.
<i>South-West Oltenia:</i>	Gorj, Vâlcea, Dolj, Mehedinți, Olt.
<i>West:</i>	Arad, Caraș-Severin, Hunedoara, Timiș.
<i>North-West:</i>	Bihor, Bistrița, Cluj, Satu Mare, Sălaj, Maramureș.
<i>Center:</i>	Alba, Brașov, Covasna, Harghita, Mureș, Sibiu.
<i>Bucharest-Ilfov:</i>	București, Ilfov.

NACE Code – The classification of economic activities in the national economy was approved by GO No. 656/1997, amended by Order No 601/2002 and Order no. 337/2007 of the President of the National Institute of Statistics, and complies with the international classification used in statistic reports and official documents. The activities are ranked by the harmonization principle, by sections, divisions, groups and classes.

Abbreviations

- **PF** - Natural Person; the following forms of organization are included in this category: natural persons and family associations registered until 25.04.2008, authorized natural persons, individual enterprises and family enterprises.
- **SNC** - General Partnership
- **SCS** - Limited Partnership
- **SCA** - Limited Partnership by Share
- **SA** - Joint-Stock Company
- **SRL** - Limited Liability Company
- **RA** - Autonomous Administration
- **APJ** - Other legal persons having the obligation to register in the trade register: National R&D Institutes, Economic Interest Groupings, European Economic Interest Groupings, European Societies, European Co-operative Societies, Agricultural Co-operatives, Co-operative Organizations.

Sources of Information:

The integrated IT system of the trade register is designed by The National Trade Register Office in compliance with the provisions of the related legislation in force. The source of information consists of the trade registers organized in computerized system, kept by the trade register offices attached to law courts.

Table no. 1

**Operations performed in the trade registers by categories of registration during
December 1990 – April 2010, total by country and by counties, share of counties in
the total by country**

Counties	Total of registered operations		out of which :					
			Registered companies		Changes in statutory documents		Strike off companies	
	No.	%	No.	%	No.	%	No.	%
0	1	2	3	4	7	8	11	12
Total ROMÂNIA	13291467	100,0	2002686	100,0	10646761	100,0	642020	100,0
ALBA	199064	1,5	32200	1,6	158835	1,5	8029	1,3
ARAD	308612	2,3	48817	2,4	246416	2,3	13379	2,1
ARGES	322521	2,4	51007	2,5	259018	2,4	12496	1,9
BACAU	303124	2,3	49922	2,5	238072	2,2	15130	2,4
BIHOR	404752	3,0	62006	3,1	324011	3,0	18735	2,9
BISTRITA-NASAUD	159249	1,2	24806	1,2	126367	1,2	8076	1,3
BOTOSANI	121708	0,9	24468	1,2	90074	0,8	7166	1,1
BRASOV	522628	3,9	62464	3,1	444225	4,2	15939	2,5
BRAILA	206991	1,6	27884	1,4	172963	1,6	6144	1,0
BUZAU	232127	1,7	36084	1,8	182819	1,7	13224	2,1
CARAS-SEVERIN	156015	1,2	24212	1,2	121700	1,1	10103	1,6
CALARASI	119161	0,9	20159	1,0	93031	0,9	5971	0,9
CLUJ	590206	4,4	92407	4,6	476241	4,5	21558	3,4
CONSTANTA	564432	4,2	82831	4,1	451093	4,2	30508	4,8
COVASNA	115742	0,9	17207	0,9	92744	0,9	5791	0,9
DAMBOVITA	192025	1,4	37234	1,9	138769	1,3	16022	2,5
DOLJ	354630	2,7	52537	2,6	285839	2,7	16254	2,5
GALATI	340738	2,6	47487	2,4	275541	2,6	17710	2,8
GIURGIU	104264	0,8	16670	0,8	81617	0,8	5977	0,9
GORJ	206801	1,6	23538	1,2	175436	1,6	7827	1,2
HARGHITA	198415	1,5	31284	1,6	159626	1,5	7505	1,2
HUNEDOARA	269510	2,0	40584	2,0	213377	2,0	15549	2,4
IALOMITA	122140	0,9	18646	0,9	96515	0,9	6979	1,1
IASI	441292	3,3	66291	3,3	357159	3,4	17842	2,8
MARAMURES	271857	2,0	50665	2,5	207950	2,0	13242	2,1
MEHEDINTI	136880	1,0	22277	1,1	105712	1,0	8891	1,4
MURES	370314	2,8	50047	2,5	303468	2,9	16799	2,6
NEAMT	287791	2,2	42834	2,1	227888	2,1	17069	2,7
OLT	159893	1,2	27659	1,4	121442	1,1	10792	1,7
PRAHOVA	451299	3,4	66876	3,3	363783	3,4	20640	3,2
SALAJ	116348	0,9	19950	1,0	89765	0,8	6633	1,0
SATU MARE	206906	1,6	34049	1,7	160669	1,5	12188	1,9
SIBIU	290507	2,2	39493	2,0	239483	2,2	11531	1,8
SUCEAVA	315308	2,4	49513	2,5	245910	2,3	19885	3,1
TELEORMAN	141260	1,1	22956	1,1	112644	1,1	5660	0,9
TIMIS	439464	3,3	71210	3,6	347169	3,3	21085	3,3
TULCEA	157527	1,2	20385	1,0	130674	1,2	6468	1,0
VASLUI	162398	1,2	24963	1,2	127622	1,2	9813	1,5
VALCEA	201764	1,5	32290	1,6	157969	1,5	11505	1,8
VRANCEA	163803	1,2	24427	1,2	133192	1,3	6184	1,0
MUN. BUCURESTI	2648670	19,9	374107	18,7	2143240	20,1	131323	20,5
ILFOV	213330	1,6	38239	1,9	166693	1,6	8398	1,3

Table no. 2

Operations performed in the trade registers during December 1990 – April 2010, total by country and counties, share of categories of operations in the total of each county

Counties	Total of registered operations		out of which :					
			Registered companies		Changes in statutory documents		Strike off companies	
	No.	%	No.	%	No.	%	No.	%
0	1	2	3	4	7	8	11	12
Total ROMÂNIA	13291467	100,0	2002686	15,1	10646761	80,1	642020	4,8
ALBA	199064	100,0	32200	16,2	158835	79,8	8029	4,0
ARAD	308612	100,0	48817	15,8	246416	79,8	13379	4,3
ARGES	322521	100,0	51007	15,8	259018	80,3	12496	3,9
BACAU	303124	100,0	49922	16,5	238072	78,5	15130	5,0
BIHOR	404752	100,0	62006	15,3	324011	80,1	18735	4,6
BISTRITA-NASAUD	159249	100,0	24806	15,6	126367	79,4	8076	5,1
BOTOSANI	121708	100,0	24468	20,1	90074	74,0	7166	5,9
BRASOV	522628	100,0	62464	12,0	444225	85,0	15939	3,0
BRAILA	206991	100,0	27884	13,5	172963	83,6	6144	3,0
BUZAU	232127	100,0	36084	15,5	182819	78,8	13224	5,7
CARAS-SEVERIN	156015	100,0	24212	15,5	121700	78,0	10103	6,5
CALARASI	119161	100,0	20159	16,9	93031	78,1	5971	5,0
CLUJ	590206	100,0	92407	15,7	476241	80,7	21558	3,7
CONSTANTA	564432	100,0	82831	14,7	451093	79,9	30508	5,4
COVASNA	115742	100,0	17207	14,9	92744	80,1	5791	5,0
DAMBOVITA	192025	100,0	37234	19,4	138769	72,3	16022	8,3
DOLJ	354630	100,0	52537	14,8	285839	80,6	16254	4,6
GALATI	340738	100,0	47487	13,9	275541	80,9	17710	5,2
GIURGIU	104264	100,0	16670	16,0	81617	78,3	5977	5,7
GORJ	206801	100,0	23538	11,4	175436	84,8	7827	3,8
HARGHITA	198415	100,0	31284	15,8	159626	80,5	7505	3,8
HUNEDOARA	269510	100,0	40584	15,1	213377	79,2	15549	5,8
IALOMITA	122140	100,0	18646	15,3	96515	79,0	6979	5,7
IASI	441292	100,0	66291	15,0	357159	80,9	17842	4,0
MARAMURES	271857	100,0	50665	18,6	207950	76,5	13242	4,9
MEHEDINTI	136880	100,0	22277	16,3	105712	77,2	8891	6,5
MURES	370314	100,0	50047	13,5	303468	81,9	16799	4,5
NEAMT	287791	100,0	42834	14,9	227888	79,2	17069	5,9
OLT	159893	100,0	27659	17,3	121442	76,0	10792	6,7
PRAHOVA	451299	100,0	66876	14,8	363783	80,6	20640	4,6
SALAJ	116348	100,0	19950	17,1	89765	77,2	6633	5,7
SATU MARE	206906	100,0	34049	16,5	160669	77,7	12188	5,9
SIBIU	290507	100,0	39493	13,6	239483	82,4	11531	4,0
SUCEAVA	315308	100,0	49513	15,7	245910	78,0	19885	6,3
TELEORMAN	141260	100,0	22956	16,3	112644	79,7	5660	4,0
TIMIS	439464	100,0	71210	16,2	347169	79,0	21085	4,8
TULCEA	157527	100,0	20385	12,9	130674	83,0	6468	4,1
VASLUI	162398	100,0	24963	15,4	127622	78,6	9813	6,0
VALCEA	201764	100,0	32290	16,0	157969	78,3	11505	5,7
VRANCEA	163803	100,0	24427	14,9	133192	81,3	6184	3,8
MUN. BUCURESTI	2648670	100,0	374107	14,1	2143240	80,9	131323	5,0
ILFOV	213330	100,0	38239	17,9	166693	78,1	8398	3,9

Table no.3

Number and structure of incorporations in the trade registers during December 1990
- April 2010

Period (year, month)	Registered companies		Percentage	
	No.	%	%	
0	1	2	3	
Total, 30 April 2010, out of which	2002686	100,00		
Year 1990	81	0,00		
Year 1991	95840	4,79		
Year 1992	137456	6,86		
Year 1993	117078	5,85		
Year 1994	137445	6,86		
Year 1995	65479	3,27		
Year 1996	62089	3,10		
Year 1997	55663	2,78		
Year 1998	63878	3,19		
Year 1999	57197	2,86		
Year 2000	57268	2,86		
Year 2001	61265	3,06		
Year 2002	84780	4,23		
Year 2003	123582	6,17		
Year 2004	144284	7,20		
Year 2005	159464	7,96		
Year 2006	135371	6,76		
Year 2007	144728	7,23		
Year 2008	144173	7,20		
Year 2009	116037	5,79		
Year 2010 (I - XII) out of which :	39528		100,0	
January	7739		19,58	
February	9623		24,32	
March	11893		30,09	
April	10273		25,99	

Note: Column 2 reveals the annual structure of incorporations; column 3 reveals the structure by months during the current year.

Diagram no.1

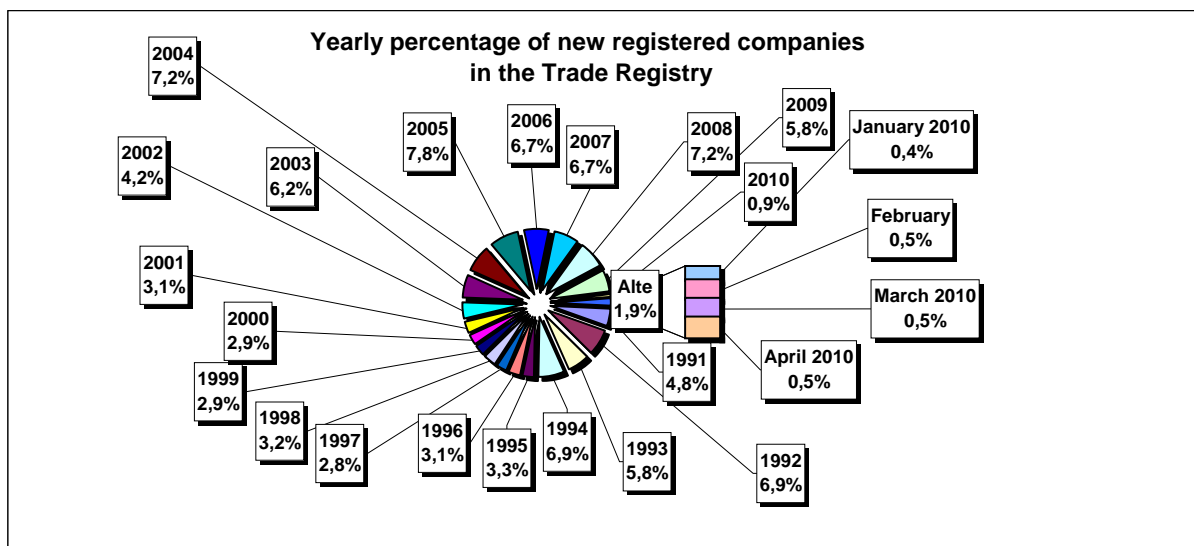


Table no. 4

**Number of incorporations in the trade registers by counties and capital sources during
December 1990 - April 2010**

Counties	Total		out of which:						Ranking by: *	
			Private capital				State majority capital			Mixed capital (state+private)
			out of which:				out of which:			
			PF	Companies	SC	APJ	RA	Companies		Companies
No.	%	No.	No.	No.	No.	No.	No.	No.		
0	1	2	3	4	5	6	6	7	8	9
Total ROMÂNIA	2002686	100,0	563223	1419308	2042	5648	1390	2416	8666	X
ALBA	32200	1,6	11969	19792	36	148	38	47	170	25
ARAD	48817	2,4	18970	29210	60	170	30	42	336	15
ARGES	51007	2,5	16860	33710	48	174	29	33	153	10
BACAU	49922	2,5	17541	31769	150	160	35	42	226	13
BIHOR	62006	3,1	17238	44142	64	151	40	62	309	8
BISTRITA-NASAUD	24806	1,2	9288	15207	46	99	28	29	109	30
BOTOSANI	24468	1,2	11687	12262	40	164	21	175	119	31
BRASOV	62456	3,1	14929	47038	58	123	49	87	172	7
BRAILA	27892	1,4	8314	19194	42	100	30	45	167	27
BUZAU	36084	1,8	11216	24469	46	152	28	42	131	22
CARAS-SEVERIN	24212	1,2	8637	15185	42	106	39	65	138	33
CALARASI	20159	1,0	6448	13402	22	88	18	81	100	38
CLUJ	92407	4,6	25410	66419	62	158	52	42	264	2
CONSTANTA	82831	4,1	17413	64474	90	209	51	51	543	3
COVASNA	17207	0,9	6634	10297	41	70	24	32	109	41
DAMBOVITA	37234	1,9	17187	19617	32	138	30	75	155	21
DOLJ	52537	2,6	12290	39740	39	167	40	58	203	9
GALATI	47487	2,4	11399	35690	35	139	30	51	143	16
GIURGIU	16670	0,8	4129	12200	15	84	23	109	110	42
GORJ	23538	1,2	6269	16825	26	184	51	83	100	34
HARGHITA	31284	1,6	13770	17059	64	91	24	44	232	26
HUNEDOARA	40584	2,0	11460	28585	33	83	42	95	286	18
IALOMITA	18646	0,9	7294	11090	27	83	15	46	91	40
IASI	66291	3,3	21437	44154	87	166	34	71	344	6
MARAMURES	50665	2,5	20947	29346	43	126	38	42	124	11
MEHEDINTI	22277	1,1	7890	14137	19	87	19	27	98	36
MURES	50047	2,5	19457	30121	68	159	30	43	169	12
NEAMT	42834	2,1	16259	26118	66	165	30	30	166	17
OLT	27659	1,4	10861	16392	27	166	26	64	123	28
PRAHOVA	66876	3,3	21995	44230	67	184	52	76	272	5
SALAJ	19950	1,0	8202	11486	41	110	19	28	64	39
SATU MARE	34049	1,7	11969	21748	41	96	20	42	134	23
SIBIU	39493	2,0	11308	27724	37	120	34	109	161	19
SUCEAVA	49513	2,5	23650	25269	73	204	31	65	221	14
TELEORMAN	22956	1,1	8398	14116	33	160	21	46	182	35
TIMIS	71210	3,6	13373	57155	69	154	38	70	351	4
TULCEA	20385	1,0	7592	12417	36	67	19	42	212	37
VASLUI	24963	1,2	12263	12375	22	110	16	41	136	29
VALCEA	32290	1,6	13266	18594	64	170	42	39	115	24
VRANCEA	24427	1,2	7925	16195	35	114	17	27	114	32
MUN. BUCURESTI	374107	18,7	34800	337729	64	153	116	105	1141	1
ILFOV	38239	1,9	5279	32626	31	96	21	13	173	20

*) The total number of incorporations (col 1)

Table no. 5

**Number of incorporations in the trade registers by counties and business categories
during December 1990 – April 2010**

County	Total		out of which:							APJ
			PF	companies: 1430390				RA	SC	
				SNC	SCS	SRL	SA			
				No.	No.	No.	No.			
0	1	2	3	4	5	6	7	8	9	10
Total ROMÂNIA	2002686	100,0	563223	32678	1608	1362337	33760	1390	2042	5648
ALBA	32200	1,6	11969	890	11	18534	574	38	36	148
ARAD	48817	2,4	18970	54	13	28818	702	30	60	170
ARGES	51007	2,5	16860	107	15	32933	841	29	48	174
BACAU	49922	2,5	17541	1299	4	29986	747	35	150	160
BIHOR	62006	3,1	17238	127	47	43409	930	40	64	151
BISTRITA-NASAUD	24806	1,2	9288	146	22	14755	422	28	46	99
BOTOSANI	24468	1,2	11687	468	1	11627	460	21	40	164
BRASOV	62464	3,1	14929	239	20	46154	892	49	58	123
BRAILA	27884	1,4	8314	376	12	18473	537	30	42	100
BUZAU	36084	1,8	11216	3747	46	20256	593	28	46	152
CARAS-SEVERIN	24212	1,2	8637	118	9	14786	475	39	42	106
CALARASI	20159	1,0	6448	609	3	12610	361	18	22	88
CLUJ	92407	4,6	25410	2112	21	63245	1347	52	62	158
CONSTANTA	82831	4,1	17413	311	23	63208	1526	51	90	209
COVASNA	17207	0,9	6634	148	4	9977	309	24	41	70
DAMBOVITA	37234	1,9	17187	60	8	19275	504	30	32	138
DOLJ	52537	2,6	12290	1560	8	37521	912	40	39	167
GALATI	47487	2,4	11399	1574	6	33439	865	30	35	139
GIURGIU	16670	0,8	4129	35	8	12046	330	23	15	84
GORJ	23538	1,2	6269	29	1	16472	506	51	26	184
HARGHITA	31284	1,6	13770	62	7	16766	500	24	64	91
HUNEDOARA	40584	2,0	11460	1166	98	27006	696	42	33	83
IALOMITA	18646	0,9	7294	269	12	10591	355	15	27	83
IASI	66291	3,3	21437	508	111	42913	1035	34	87	166
MARAMURES	50665	2,5	20947	1927	23	26953	608	38	43	126
MEHEDINTI	22277	1,1	7890	427	3	13490	342	19	19	87
MURES	50047	2,5	19457	37	34	29578	684	30	68	159
NEAMT	42834	2,1	16259	3293	30	22304	687	30	66	165
OLT	27659	1,4	10861	1611	1	14464	503	26	27	166
PRAHOVA	66876	3,3	21995	3122	15	40506	935	52	67	184
SALAJ	19950	1,0	8202	600	4	10674	300	19	41	110
SATU MARE	34049	1,7	11969	283	9	21150	481	20	41	96
SIBIU	39493	2,0	11308	778	49	26487	680	34	37	120
SUCEAVA	49513	2,5	23650	438	8	24510	599	31	73	204
TELEORMAN	22956	1,1	8398	272	399	13239	434	21	33	160
TIMIS	71210	3,6	13373	616	33	55636	1291	38	69	154
TULCEA	20385	1,0	7592	1363	114	10710	484	19	36	67
VASLUI	24963	1,2	12263	90	13	12025	424	16	22	110
VALCEA	32290	1,6	13266	364	6	17871	507	42	64	170
VRANCEA	24427	1,2	7925	356	10	15504	466	17	35	114
MUN. BUCURESTI	374107	18,7	34800	1038	314	330385	7237	116	64	153
ILFOV	38239	1,9	5279	49	33	32051	679	21	31	96

Table no. 6

Operations performed in the trade registers by counties and categories of registration in the month of April 2010

County	Total of operations carried on		out of which:					
			New incorporations		Changes in statutory documents		Strike off companies	
	No.	%	No.	%	No.	%	No.	%
0	1	2	3	4	5	6	9	10
Total ROMÂNIA	175717	100,0	10273	5,8	161789	92,1	3655	2,1
ALBA	2610	100,0	202	7,7	2330	89,3	78	3,0
ARAD	4535	100,0	228	5,0	4187	92,3	120	2,6
ARGES	4616	100,0	204	4,4	4311	93,4	101	2,2
BACAU	4278	100,0	256	6,0	3922	91,7	100	2,3
BIHOR	6139	100,0	428	7,0	5593	91,1	118	1,9
BISTRITA-NASAUD	2432	100,0	126	5,2	2256	92,8	50	2,1
BOTOSANI	2050	100,0	162	7,9	1846	90,0	42	2,0
BRASOV	6073	100,0	273	4,5	5697	93,8	103	1,7
BRAILA	2607	100,0	185	7,1	2325	89,2	97	3,7
BUZAU	4002	100,0	153	3,8	3770	94,2	79	2,0
CARAS-SEVERIN	1725	100,0	98	5,7	1595	92,5	32	1,9
CALARASI	1596	100,0	93	5,8	1459	91,4	44	2,8
CLUJ	2208	100,0	450	20,4	1595	72,2	163	7,4
CONSTANTA	9277	100,0	384	4,1	8770	94,5	123	1,3
COVASNA	1794	100,0	101	5,6	1632	91,0	61	3,4
DAMBOVITA	2675	100,0	209	7,8	2415	90,3	51	1,9
DOLJ	5206	100,0	242	4,6	4886	93,9	78	1,5
GALATI	3665	100,0	265	7,2	3328	90,8	72	2,0
GIURGIU	1296	100,0	85	6,6	1187	91,6	24	1,9
GORJ	2308	100,0	128	5,5	2157	93,5	23	1,0
HARGHITA	3845	100,0	269	7,0	3411	88,7	165	4,3
HUNEDOARA	3608	100,0	205	5,7	3321	92,0	82	2,3
IALOMITA	1254	100,0	80	6,4	1150	91,7	24	1,9
IASI	6275	100,0	481	7,7	5652	90,1	142	2,3
MARAMURES	3762	100,0	196	5,2	3482	92,6	84	2,2
MEHEDINTI	1234	100,0	92	7,5	1116	90,4	26	2,1
MURES	4630	100,0	211	4,6	4304	93,0	115	2,5
NEAMT	3447	100,0	179	5,2	3191	92,6	77	2,2
OLT	2052	100,0	124	6,0	1888	92,0	40	1,9
PRAHOVA	6389	100,0	326	5,1	5904	92,4	159	2,5
SALAJ	1823	100,0	152	8,3	1645	90,2	26	1,4
SATU MARE	2837	100,0	185	6,5	2613	92,1	39	1,4
SIBIU	3566	100,0	218	6,1	3272	91,8	76	2,1
SUCEAVA	3101	100,0	201	6,5	2818	90,9	82	2,6
TELEORMAN	1907	100,0	123	6,4	1753	91,9	31	1,6
TIMIS	5766	100,0	355	6,2	5296	91,8	115	2,0
TULCEA	2083	100,0	117	5,6	1931	92,7	35	1,7
VASLUI	1996	100,0	92	4,6	1875	93,9	29	1,5
VALCEA	2810	100,0	173	6,2	2562	91,2	75	2,7
VRANCEA	2659	100,0	121	4,6	2468	92,8	70	2,6
MUN. BUCURESTI	35650	100,0	1676	4,7	33370	93,6	604	1,7
ILFOV	3931	100,0	425	10,8	3506	89,2		

*) by effect of implementation of Law no. 314/2001, art.1 and art. 6

Table no.7

Number of incorporations in the trade registers by counties and capital sources in the month of April 2010

County	Total		out of which:						Ranking by: *	
			Private capital				State majority capital			Mixed capital (state+private)
			out of which:				out of which:			
			PF	Companies	SC	APJ	RA	Companies		Companies
No.	%	No.	No.	No.		No.	No.	No.		
0	1	2	3	4	5	6	7	8	9	
Total ROMÂNIA	10273	100,0	6015	4225	4	20		4	5	X
ALBA	202	2,0	145	55						20
ARAD	228	2,2	169	59						14
ARGES	204	2,0	112	91						19
BACAU	256	2,5	160	96						12
BIHOR	428	4,2	285	142	1					4
BISTRITA-NASAUD	126	1,2	93	33						31
BOTOSANI	162	1,6	116	34						27
BRASOV	273	2,7	179	94						9
BRAILA	185	1,8	119	66						23
BUZAU	153	1,5	93	60						28
CARAS-SEVERIN	98	1,0	50	48						37
CALARASI	93	0,9	53	39					1	3
CLUJ	450	4,4	270	180						6
CONSTANTA	384	3,7	192	189	3					36
COVASNA	101	1,0	78	23						17
DAMBOVITA	209	2,0	154	55						13
DOLJ	242	2,4	142	100						41
GALATI	265	2,6	165	100						30
GIURGIU	85	0,8	23	62						10
GORJ	128	1,2	81	47						18
HARGHITA	269	2,6	234	34				1		42
HUNEDOARA	205	2,0	126	79						2
IALOMITA	80	0,8	38	42						5
IASI	481	4,7	324	157						22
MARAMURES	196	1,9	123	72				1		39
MEHEDINTI	92	0,9	57	35						16
MURES	211	2,1	138	70				1	1	25
NEAMT	179	1,7	123	56						32
OLT	124	1,2	64	60						8
PRAHOVA	326	3,2	197	128						24
SALAJ	152	1,5	126	26						29
SATU MARE	185	1,8	124	61						15
SIBIU	218	2,1	148	70						21
SUCEAVA	201	2,0	147	54						33
TELEORMAN	123	1,2	77	45						7
TIMIS	355	3,5	192	162				1		35
TULCEA	117	1,1	80	37						40
VASLUI	92	0,9	74	18						26
VALCEA	173	1,7	137	36						34
VRANCEA	121	1,2	75	46						1
MUN. BUCURESTI	1676	16,3	634	1038					3	38
ILFOV	425	4,1	98	326						11

*) The total number of incorporations (col 1)

*** Less than 0,01%

Table no.8

**Number of incorporations in the trade registers by counties and
business categories in the month of April 2010**

County	Total		out of which:						APJ	
			PF	companies: 4234				RA		SC
	SNC	SCS		SRL	SA					
	No.	%	No.	No.	No.	No.	No.	No.		
0	1	2	3	4	5	6	7	8	9	
Total ROMÂNIA	10273	100,0	6015		1	4219	14		4	20
ALBA	202	2,0	145			55				2
ARAD	228	2,2	169			59				
ARGES	204	2,0	112			91				1
BACAU	256	2,5	160			96				
BIHOR	428	4,2	285			142			1	
BISTRITA-NASAUD	126	1,2	93			33				
BOTOSANI	162	1,6	116			34				12
BRASOV	273	2,7	179			93	1			
BRAILA	185	1,8	119			66				
BUZAU	153	1,5	93			60				
CARAS-SEVERIN	98	1,0	50			48				
CALARASI	93	0,9	53			40				
CLUJ	450	4,4	270			178	2			
CONSTANTA	384	3,7	192			189			3	
COVASNA	101	1,0	78			23				
DAMBOVITA	209	2,0	154			53	2			
DOLJ	242	2,4	142			100				
GALATI	265	2,6	165			100				
GIURGIU	85	0,8	23			62				
GORJ	128	1,2	81			47				
HARGHITA	269	2,6	234			35				
HUNEDOARA	205	2,0	126			79				
IALOMITA	80	0,8	38			42				
IASI	481	4,7	324			157				
MARAMURES	196	1,9	123			73				
MEHEDINTI	92	0,9	57			35				
MURES	211	2,1	138			72				1
NEAMT	179	1,7	123			55	1			
OLT	124	1,2	64			60				
PRAHOVA	326	3,2	197			127	1			1
SALAJ	152	1,5	126			26				
SATU MARE	185	1,8	124			61				
SIBIU	218	2,1	148			70				
SUCEAVA	201	2,0	147			54				
TELEORMAN	123	1,2	77			45				1
TIMIS	355	3,5	192			163				
TULCEA	117	1,1	80			37				
VASLUI	92	0,9	74			18				
VALCEA	173	1,7	137			35	1			
VRANCEA	121	1,2	75			46				
MUN. BUCURESTI	1676	16,3	634		1	1036	4			1
ILFOV	425	4,1	98			324	2			1

Table no. 9

Number of incorporations in the trade registers by domains of activity and business categories in the month of March 2010

CAEN seg.	Field of activity	Total		out of which:								
				PF	companies: 4234				RA	SC	APJ	
					SNC	SCS	SRL	SA				
					No.	No.	No.	No.				
0	1	2	3	4	5	6	7	8	9	10	11	
	Total ROMANIA	10273	100,0	6015		1	4219	14			4	20
1	Agriculture, hunting and related service activities	1262	12,3	1100			157					5
2	Forestry and logging	57	0,6	32			25					
3	Fishing and aquaculture	48	0,5	37			11					
5	Mining of hard and brown coal											
6	Extraction of crude petroleum and natural gas	1	0,0				1					
7	Mining of metal ores											
8	Other mining and quarrying	10	0,1				10					
9	Mining support service activities	1	0,0				1					
10	Manufacture of food products	104	1,0	45			58					1
11	Manufacture of beverages	13	0,1	7			6					
12	Manufacture of tobacco products											
13	Manufacture of textiles	16	0,2	7			9					
14	Manufacture of wearing apparel	49	0,5	25			24					
15	Tanning and dressing of leather; manufacture of luggage, handbags, saddlery, harness and footwear; dressing and dyeing of fur	17	0,2	6			11					
16	Manufacture of wood and of products of wood and cork, except furniture; manufacture of articles of straw and plaiting materials	80	0,8	37			42				1	
17	Manufacture of paper and paper products	5	0,0				5					
18	Printing and reproduction of recorded media	14	0,1	5			9					
19	Manufacture of coke and refined petroleum products	2	0,0				2					
20	Manufacture of chemicals and chemical products	4	0,0				4					
21	Manufacture of basic pharmaceutical products and pharmaceutical preparations	1	0,0				1					
22	Manufacture of rubber and plastic products	27	0,3	10			17					
23	Manufacture of other non-metallic mineral products	31	0,3	18			13					
24	Manufacture of basic metals	8	0,1	3			5					
25	Manufacture of fabricated metal products, except machinery and equipment	76	0,7	40			36					
26	Manufacture of computer, electronic and optical products	3	0,0				3					
27	Manufacture of electrical equipment	1	0,0				1					
28	Manufacture of machinery and equipment n.e.c.	9	0,1				9					
29	Manufacture of motor vehicles, trailers and semi-trailers	3	0,0				3					
30	Manufacture of other transport equipment	10	0,1	1			9					
31	Manufacture of furniture	20	0,2	10			10					
32	Other manufacturing	46	0,4	31			15					
33	Repair and installation of machinery and equipment	48	0,5	30			18					
35	Electricity, gas, steam and air conditioning supply	56	0,5				56					
36	Water collection, treatment and supply	2	0,0				2					
37	Sewerage											
38	Waste collection, treatment and disposal activities; materials recovery	41	0,4	4			36	1				
39	Remediation activities and other waste management services											
41	Construction of buildings	370	3,6	103			265	1			1	
42	Civil engineering	31	0,3	7			23	1				
43	Specialised construction activities	432	4,2	302			130					
45	Wholesale and retail trade and repair of motor vehicles and motorcycles	292	2,8	115			177					
46	Wholesale trade, except of motor vehicles and motorcycles	946	9,2	284			649					13
47	Retail trade, except of motor vehicles and motorcycles	2050	20,0	1327			722	1				
49	Land transport and transport via pipelines	371	3,6	151			220					
50	Water transport	1	0,0				1					

Table no. 10

Number of incorporated trading companies and the value of the subscribed share capital, by counties, in the month of April 2010

County	Total registered companies		Subscribed capital		Average subscribed capital on company
	No.	%	thousand Lei	%	thousand Lei
0	1	2	3	4	5
Total ROMÂNIA	4234	100,0	149573,7	100,0	35,5
ALBA	55	1,3	112,4	0,1	2,0
ARAD	59	1,4	30,9	0,0	0,5
ARGES	91	2,1	12757,4	8,5	141,7
BACAU	96	2,3	230,5	0,2	2,4
BIHOR	142	3,4	781,0	0,5	5,6
BISTRITA-NASAUD	33	0,8	9,7	***	0,3
BOTOSANI	34	0,8	9,7	***	0,3
BRASOV	94	2,2	174,8	0,1	1,9
BRAILA	66	1,6	16,5	0,0	0,3
BUZAU	60	1,4	76187,2	50,9	1269,8
CARAS-SEVERIN	48	1,1	32,8	0,0	0,7
CALARASI	40	0,9	76,4	0,1	1,9
CLUJ	180	4,3	35840,1	24,0	201,3
CONSTANTA	189	4,5	68,5	0,0	0,4
COVASNA	23	0,5	10,9	***	0,5
DAMBOVITA	55	1,3	145,8	0,1	2,7
DOLJ	100	2,4	38,5	0,0	0,4
GALATI	100	2,4	61,9	0,0	0,6
GIURGIU	62	1,5	110,1	0,1	1,8
GORJ	47	1,1	13,8	***	0,3
HARGHITA	35	0,8	116,0	0,1	3,3
HUNEDOARA	79	1,9	41,4	0,0	0,5
IALOMITA	42	1,0	296,4	0,2	7,1
IASI	157	3,7	344,8	0,2	2,2
MARAMURES	73	1,7	314,6	0,2	4,3
MEHEDINTI	35	0,8	107,9	0,1	3,1
MURES	72	1,7	344,3	0,2	4,8
NEAMT	56	1,3	115,1	0,1	2,1
OLT	60	1,4	384,0	0,3	6,4
PRAHOVA	128	3,0	5590,9	3,7	44,0
SALAJ	26	0,6	10,6	***	0,4
SATU MARE	61	1,4	91,3	0,1	1,5
SIBIU	70	1,7	623,0	0,4	8,9
SUCEAVA	54	1,3	56,7	0,0	1,1
TELEORMAN	45	1,1	163,6	0,1	3,6
TIMIS	163	3,8	1126,4	0,8	6,9
TULCEA	37	0,9	13,5	***	0,4
VASLUI	18	0,4	5,2	***	0,3
VALCEA	36	0,9	253,4	0,2	7,5
VRANCEA	46	1,1	18,4	0,0	0,4
MUN. BUCURESTI	1041	24,6	7996,2	5,3	7,7
ILFOV	326	7,7	4850,9	3,2	14,9

Note: The average does not include filials because according to the Law no.31/1990 they are not juridical persons

*** Less than 0,01%

Table no. 11

Number of incorporated trading companies and the value of the subscribed share capital by legal forms, in the month of April 2010

Company type	Total registered companies		Subscribed capital		Average subscribed capital on company
	No.	%	thousand Lei	%	thousand Lei
0	1	2	3	4	5
Total ROMÂNIA	4234	100,0	149573,7	100,0	35,5
SNC	1	0,0	0,2	***	
SCS	14	0,3	35635,5	23,8	3959,5
SRL	4219	99,6	113938,0	76,2	27,1

Note: The average does not include filials because according to the Law no.31/1990 they are not juridical persons

*** Less than 0,01%

Diagram no.5

