



MINISTRY OF JUSTICE

THE NATIONAL TRADE REGISTER OFFICE

București, Bd. Unirii nr. 74, Bl. J3b, tronson II+III, sector 3; Telefon: +40 21 316.08.04, 316.08.10; Fax: +40 21 316.08.03; Cod poștal: 030837
Website: www.onrc.ro; E-mail: onrc@onrc.ro; Cod identificare Fiscală: 14942091

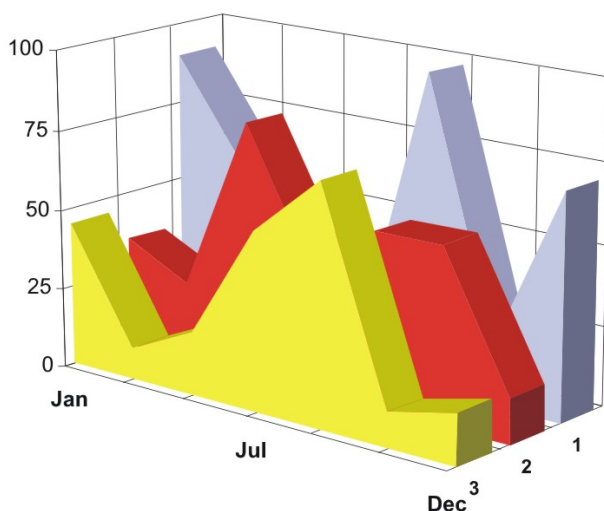
OPERATIONS IN THE CENTRAL TRADE REGISTER

STATISTIC SYNTHESIS

OF

RECORDS IN THE CENTRAL TRADE REGISTER

- 31st March 2010 - provisional data -



- ISSUE No. 220 -

**MINISTRY OF JUSTICE
THE NATIONAL TRADE REGISTER OFFICE**

- Operations such as incorporation of trading companies, submission of changes, and strike-off are carried out based on Law No.26/1990, as republished, Law No.31/1990, as republished and on the Methodological Norms no. P/608/1998.

- This work reflects the evolution of the operations with the Trade Register Office attached to Bucharest Law Court and the Trade Register Offices attached to County Law Courts.

- The data contained in the Central Trade Register refer to operations for which law sets out the obligation of being registered in the trade registers kept by the 42 trade register offices attached to law courts.

• The content of this publication shall not be reproduced, partly or entirely, in original or modified form, and shall not be stored in a recovery system and shall not be transmitted in any form or by any means without prior written authorization of the Ministry of Justice – The National Trade Register Office.

• The content of this publication shall not be used in articles, studies, books, as supporting or explanatory data only by clearly and accurately indicating the source.

CONTENTS

Page

1	Definitions	1
2.1	Data related to the period December 1990 –March 2010	3
<hr/>		
	Table no. 1 – Operations performed in the trade registers by categories of registration during December 1990 –March 2010, total by country and by counties, shares of counties in the total by country	3
	Table no. 2 – Operations performed in the trade registers by categories of registration during 1990 –March 2010, total by country and counties, share of categories of operations in the total of each county	4
	Table no. 3 – Number and structure of incorporations in the trade registers during 1990-March 2010	5
	Chart no. 1 – Structure by years of incorporations in the trade register	
	Table no. 4 – Number of incorporations in the trade registers by counties and capital sources during 1990 - March 2010	6
	Table no. 5 – Number of incorporations in the trade registers by counties and business categories during 1990 –March 2010	7
<hr/>		
2.2	Data related to March 2010	8
<hr/>		
	Table no. 6 – Operations performed in the trade registers by counties and categories of registrations in the month of March 2010	8
	Table no. 7 – Number of incorporations in the trade registers by counties and capital sources in the month of March 2010	9
	Table no. 8 – Number of incorporations in the trade registers by counties and business categories in the month of March 2010	10
	Table no. 9 –Number of incorporations in the trade registers by domains of activity and business categories in the month of March 2010	11-12
	Table no. 10 – Number of incorporated trading companies and the value of subscribed share capital, by counties, in the month of March 2010	13
	Table no. 11– Number of incorporated trading companies and the value of subscribed share capital by legal forms, in the month of March 2010	14
	Chart no. 5 – Average value of subscribed share capital by types of trading companies in the month of March 2010	14

Definitions

The Trade Register Office was established based on Law No. 26/1990, as republished and subsequently amended and supplemented, operates as an active institution since 1990 and is twofold structured:

- at national level, represented by the National Trade Register Office organized under the authority of the Ministry of Justice
- at local level, represented by the 42 Trade Register Offices attached to Law Courts, organized under the subordination of the National Trade Register Office

Categories of persons liable to registration in the trade register:

- natural persons: authorized natural persons, individual enterprises and family enterprises currently carrying on trading activities;
- legal persons represented by: Trading Companies, National Societies and Companies, National R&D Institutes, Autonomous Administrations, Co-operative Societies, Agricultural Co-operatives, Co-operative Organizations, Economic Interest Groupings, European Economic Interest Groupings, European Societies, European Co-operative Societies, branches of trading companies with legal establishment, operation and incorporation regime of trading company legal form under which they were incorporated.

• Terms used in tables and charts

➤ **Number of companies**, depending on the table, represents the number of trading companies incorporated during the reference period, the number of trading companies struck-off from the trade register. The following forms of organization are included: limited liability companies, joint-stock companies, limited partnerships by share, limited partnerships, general partnerships, and branches thereof.

➤ **Value of subscribed share capital:**

- **total, expressed in national currency:** the share capital value resulted by adding up the subscribed values (in cash and in kind) in national currency (lei)

➤ **Regions of economic development:**

<i>North-East:</i>	Suceava, Botoșani, Neamț, Iași, Bacău, Vaslui.
<i>South-East:</i>	Vrancea, Galați, Buzău, Brăila, Tulcea, Constanța.
<i>South-Muntenia:</i>	Argeș, Dâmbovița, Prahova, Teleorman, Giurgiu, Călărași, Ialomița.
<i>South-West Oltenia:</i>	Gorj, Vâlcea, Dolj, Mehedinți, Olt.
<i>West:</i>	Arad, Caraș-Severin, Hunedoara, Timiș.
<i>North-West:</i>	Bihor, Bistrița, Cluj, Satu Mare, Sălaj, Maramureș.
<i>Center:</i>	Alba, Brașov, Covasna, Harghita, Mureș, Sibiu.
<i>Bucharest-Ilfov:</i>	București, Ilfov.

NACE Code – The classification of economic activities in the national economy was approved by GO No. 656/1997, amended by Order No 601/2002 and Order no. 337/2007 of the President of the

National Institute of Statistics, and complies with the international classification used in statistic reports and official documents. The activities are ranked by the harmonization principle, by sections, divisions, groups and classes.

Abbreviations

- **PF** - Natural Person; the following forms of organization are included in this category: natural persons and family associations registered until 25.04.2008, authorized natural persons, individual enterprises and family enterprises.
- **SNC** - General Partnership
- **SCS** - Limited Partnership
- **SCA** - Limited Partnership by Share
- **SA** - Joint-Stock Company
- **SRL** - Limited Liability Company
- **RA** - Autonomous Administration
- **APJ** - Other legal persons having the obligation to register in the trade register: National R&D Institutes, Economic Interest Groupings, European Economic Interest Groupings, European Societies, European Co-operative Societies, Agricultural Co-operatives, Co-operative Organizations.

Sources of Information:

The integrated IT system of the trade register is designed by The National Trade Register Office in compliance with the provisions of the related legislation in force. The source of information consists of the trade registers organized in computerized system, kept by the trade register offices attached to law courts.

Table no. 1

**Operations performed in the trade registers by categories of registration during
December 1990 – March 2010, total by country and by counties, share of counties
in the total by country**

Counties	Total of registered operations		out of which :					
			Registered companies		Changes in statutory documents		Strike off companies	
	No.	%	No.	%	No.	%	No.	%
0	1	2	3	4	7	8	11	12
Total ROMÂNIA	13115748	100,0	1992411	100,0	10484972	100,0	638365	100,0
ALBA	196454	1,5	31998	1,6	156505	1,5	7951	1,2
ARAD	304077	2,3	48589	2,4	242229	2,3	13259	2,1
ARGES	317905	2,4	50803	2,5	254707	2,4	12395	1,9
BACAU	298846	2,3	49666	2,5	234150	2,2	15030	2,4
BIHOR	398613	3,0	61578	3,1	318418	3,0	18617	2,9
BISTRITA-NASAUD	156817	1,2	24680	1,2	124111	1,2	8026	1,3
BOTOSANI	119658	0,9	24306	1,2	88228	0,8	7124	1,1
BRASOV	516555	3,9	62191	3,1	438528	4,2	15836	2,5
BRAILA	204384	1,6	27699	1,4	170638	1,6	6047	0,9
BUZAU	228125	1,7	35931	1,8	179049	1,7	13145	2,1
CARAS-SEVERIN	154290	1,2	24114	1,2	120105	1,1	10071	1,6
CALARASI	117565	0,9	20066	1,0	91572	0,9	5927	0,9
CLUJ	587998	4,5	91957	4,6	474646	4,5	21395	3,4
CONSTANTA	555155	4,2	82447	4,1	442323	4,2	30385	4,8
COVASNA	113948	0,9	17106	0,9	91112	0,9	5730	0,9
DAMBOVITA	189350	1,4	37025	1,9	136354	1,3	15971	2,5
DOLJ	349425	2,7	52296	2,6	280953	2,7	16176	2,5
GALATI	337073	2,6	47222	2,4	272213	2,6	17638	2,8
GIURGIU	102969	0,8	16586	0,8	80430	0,8	5953	0,9
GORJ	204493	1,6	23410	1,2	173279	1,7	7804	1,2
HARGHITA	194570	1,5	31015	1,6	156215	1,5	7340	1,1
HUNEDOARA	265902	2,0	40379	2,0	210056	2,0	15467	2,4
IALOMITA	120886	0,9	18566	0,9	95365	0,9	6955	1,1
IASI	435017	3,3	65810	3,3	351507	3,4	17700	2,8
MARAMURES	268095	2,0	50469	2,5	204468	2,0	13158	2,1
MEHEDINTI	135646	1,0	22185	1,1	104596	1,0	8865	1,4
MURES	365684	2,8	49836	2,5	299164	2,9	16684	2,6
NEAMT	284344	2,2	42655	2,1	224697	2,1	16992	2,7
OLT	157841	1,2	27535	1,4	119554	1,1	10752	1,7
PRAHOVA	444910	3,4	66550	3,3	357879	3,4	20481	3,2
SALAJ	114525	0,9	19798	1,0	88120	0,8	6607	1,0
SATU MARE	204069	1,6	33864	1,7	158056	1,5	12149	1,9
SIBIU	286941	2,2	39275	2,0	236211	2,3	11455	1,8
SUCEAVA	312207	2,4	49312	2,5	243092	2,3	19803	3,1
TELEORMAN	139353	1,1	22833	1,1	110891	1,1	5629	0,9
TIMIS	433698	3,3	70855	3,6	341873	3,3	20970	3,3
TULCEA	155444	1,2	20268	1,0	128743	1,2	6433	1,0
VASLUI	160402	1,2	24871	1,2	125747	1,2	9784	1,5
VALCEA	198954	1,5	32117	1,6	155407	1,5	11430	1,8
VRANCEA	161144	1,2	24306	1,2	130724	1,2	6114	1,0
MUN. BUCURESTI	2613016	19,9	372427	18,7	2109870	20,1	130719	20,5
ILFOV	209399	1,6	37814	1,9	163187	1,6	8398	1,3

Table no. 2

Operations performed in the trade registers during December 1990 – March 2010, total by country and counties, share of categories of operations in the total of each county

Counties	Total of registered operations		out of which :					
			Registered companies		Changes in statutory documents		Strike off companies	
	No.	%	No.	%	No.	%	No.	%
0	1	2	3	4	7	8	11	12
Total ROMÂNIA	13115748	100,0	1992411	15,2	10484972	79,9	638365	4,9
ALBA	196454	100,0	31998	16,3	156505	79,7	7951	4,0
ARAD	304077	100,0	48589	16,0	242229	79,7	13259	4,4
ARGES	317905	100,0	50803	16,0	254707	80,1	12395	3,9
BACAU	298846	100,0	49666	16,6	234150	78,4	15030	5,0
BIHOR	398613	100,0	61578	15,4	318418	79,9	18617	4,7
BISTRITA-NASAUD	156817	100,0	24680	15,7	124111	79,1	8026	5,1
BOTOSANI	119658	100,0	24306	20,3	88228	73,7	7124	6,0
BRASOV	516555	100,0	62191	12,0	438528	84,9	15836	3,1
BRAILA	204384	100,0	27699	13,6	170638	83,5	6047	3,0
BUZAU	228125	100,0	35931	15,8	179049	78,5	13145	5,8
CARAS-SEVERIN	154290	100,0	24114	15,6	120105	77,8	10071	6,5
CALARASI	117565	100,0	20066	17,1	91572	77,9	5927	5,0
CLUJ	587998	100,0	91957	15,6	474646	80,7	21395	3,6
CONSTANTA	555155	100,0	82447	14,9	442323	79,7	30385	5,5
COVASNA	113948	100,0	17106	15,0	91112	80,0	5730	5,0
DAMBOVITA	189350	100,0	37025	19,6	136354	72,0	15971	8,4
DOLJ	349425	100,0	52296	15,0	280953	80,4	16176	4,6
GALATI	337073	100,0	47222	14,0	272213	80,8	17638	5,2
GIURGIU	102969	100,0	16586	16,1	80430	78,1	5953	5,8
GORJ	204493	100,0	23410	11,4	173279	84,7	7804	3,8
HARGHITA	194570	100,0	31015	15,9	156215	80,3	7340	3,8
HUNEDOARA	265902	100,0	40379	15,2	210056	79,0	15467	5,8
IALOMITA	120886	100,0	18566	15,4	95365	78,9	6955	5,8
IASI	435017	100,0	65810	15,1	351507	80,8	17700	4,1
MARAMURES	268095	100,0	50469	18,8	204468	76,3	13158	4,9
MEHEDINTI	135646	100,0	22185	16,4	104596	77,1	8865	6,5
MURES	365684	100,0	49836	13,6	299164	81,8	16684	4,6
NEAMT	284344	100,0	42655	15,0	224697	79,0	16992	6,0
OLT	157841	100,0	27535	17,4	119554	75,7	10752	6,8
PRAHOVA	444910	100,0	66550	15,0	357879	80,4	20481	4,6
SALAJ	114525	100,0	19798	17,3	88120	76,9	6607	5,8
SATU MARE	204069	100,0	33864	16,6	158056	77,5	12149	6,0
SIBIU	286941	100,0	39275	13,7	236211	82,3	11455	4,0
SUCEAVA	312207	100,0	49312	15,8	243092	77,9	19803	6,3
TELEORMAN	139353	100,0	22833	16,4	110891	79,6	5629	4,0
TIMIS	433698	100,0	70855	16,3	341873	78,8	20970	4,8
TULCEA	155444	100,0	20268	13,0	128743	82,8	6433	4,1
VASLUI	160402	100,0	24871	15,5	125747	78,4	9784	6,1
VALCEA	198954	100,0	32117	16,1	155407	78,1	11430	5,7
VRANCEA	161144	100,0	24306	15,1	130724	81,1	6114	3,8
MUN. BUCURESTI	2613016	100,0	372427	14,3	2109870	80,7	130719	5,0
ILFOV	209399	100,0	37814	18,1	163187	77,9	8398	4,0

Table no.3

Number and structure of incorporations in the trade registers during December 1990 - March 2010

Period (year, month)	Registered companies		Percentage	
	No.	%	%	%
0	1	2	3	
Total, 28 March 2010, out of which	1992411	100,00		
Year 1990	81	0,00		
Year 1991	95840	4,81		
Year 1992	137456	6,90		
Year 1993	117078	5,88		
Year 1994	137445	6,90		
Year 1995	65479	3,29		
Year 1996	62089	3,12		
Year 1997	55663	2,79		
Year 1998	63878	3,21		
Year 1999	57197	2,87		
Year 2000	57268	2,87		
Year 2001	61265	3,07		
Year 2002	84780	4,26		
Year 2003	123582	6,20		
Year 2004	144284	7,24		
Year 2005	159464	8,00		
Year 2006	135371	6,79		
Year 2007	144728	7,26		
Year 2008	144173	7,24		
Year 2009	116037	5,82		
Year 2010 (I - XII) out of which :	29255			100,0
January	7739			26,5
February	9623			32,89
March	11893			40,65

Note: Column 2 reveals the annual structure of incorporations; column 3 reveals the structure by months during the current year.

Diagram no.1

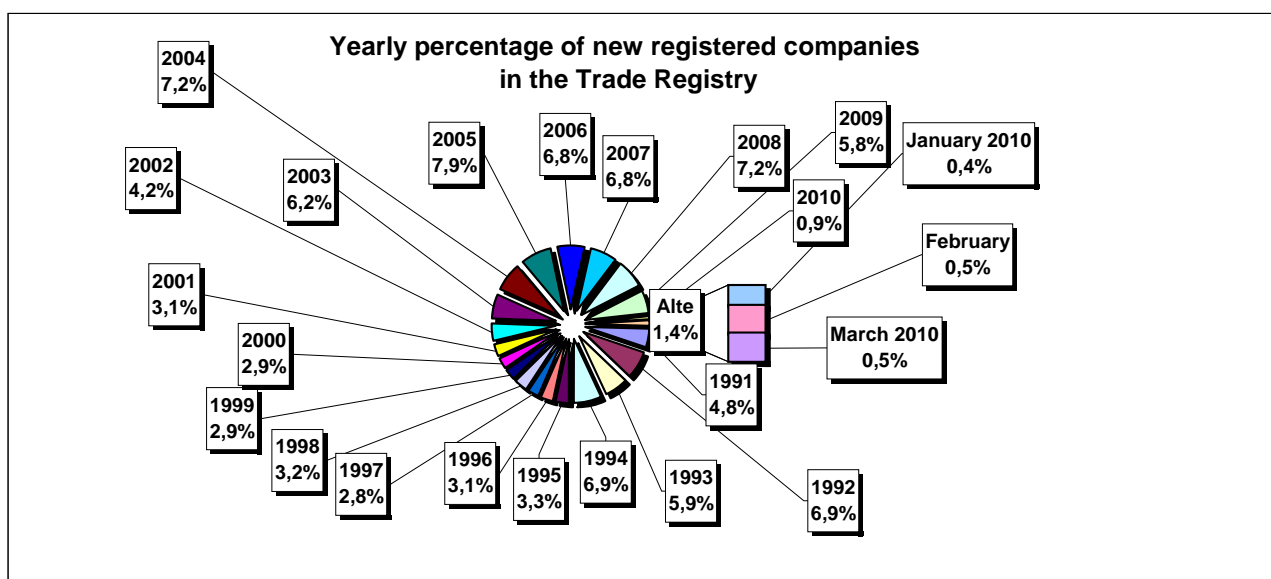


Table no. 4

**Number of incorporations in the trade registers by counties and capital sources during
December 1990 - March 2010**

Counties	Total		out of which:						Ranking by: *	
			Private capital				State majority capital			Mixed capital (state+private)
			out of which:				out of which:			
			PF	Companies	SC	APJ	RA	Companies		Companies
			No.	No.	No.	No.	No.	No.		No.
0	1	2	3	4	5	6	7	8	9	
Total ROMÂNIA	1992411	100,0	557204	1415083	2038	5630	1390	2412	8661	X
ALBA	31998	1,6	11824	19737	36	146	38	47	170	25
ARAD	48589	2,4	18801	29151	60	170	30	42	336	15
ARGES	50803	2,5	16748	33619	48	173	29	33	153	10
BACAU	49666	2,5	17381	31673	150	160	35	42	226	13
BIHOR	61578	3,1	16953	44000	63	151	40	62	309	8
BISTRITA-NASAUD	24680	1,2	9195	15174	46	99	28	29	109	30
BOTOSANI	24306	1,2	11571	12228	40	152	21	175	119	31
BRASOV	62183	3,1	14750	46944	58	123	49	87	172	7
BRAILA	27707	1,4	8195	19128	42	100	30	45	167	27
BUZAU	35931	1,8	11123	24409	46	152	28	42	131	22
CARAS-SEVERIN	24114	1,2	8587	15137	42	106	39	65	138	33
CALARASI	20066	1,0	6395	13363	22	88	18	81	99	38
CLUJ	91957	4,6	25140	66239	62	158	52	42	264	2
CONSTANTA	82447	4,1	17221	64285	87	209	51	51	543	3
COVASNA	17106	0,9	6556	10274	41	70	24	32	109	41
DAMBOVITA	37025	1,9	17033	19562	32	138	30	75	155	21
DOLJ	52296	2,6	12148	39640	39	168	40	58	203	9
GALATI	47222	2,4	11234	35590	35	139	30	51	143	16
GIURGIU	16586	0,8	4106	12138	15	85	23	109	110	42
GORJ	23410	1,2	6188	16778	26	184	51	83	100	34
HARGHITA	31015	1,6	13536	17025	64	91	24	43	232	26
HUNEDOARA	40379	2,0	11334	28506	33	83	42	95	286	18
IALOMITA	18566	0,9	7256	11048	27	83	15	46	91	40
IASI	65810	3,3	21113	43997	87	166	34	71	344	6
MARAMURES	50469	2,5	20824	29274	43	126	38	41	124	11
MEHEDINTI	22185	1,1	7833	14102	19	87	19	27	98	36
MURES	49836	2,5	19319	30051	68	158	30	42	168	12
NEAMT	42655	2,1	16136	26062	66	165	30	30	166	17
OLT	27535	1,4	10797	16332	27	166	26	64	123	28
PRAHOVA	66550	3,3	21798	44102	67	183	52	76	272	5
SALAJ	19798	1,0	8076	11460	41	110	19	28	64	39
SATU MARE	33864	1,7	11845	21687	41	96	20	42	134	23
SIBIU	39275	2,0	11160	27654	37	120	34	109	161	19
SUCEAVA	49312	2,5	23503	25215	73	204	31	65	221	14
TELEORMAN	22833	1,1	8321	14071	33	159	21	46	182	35
TIMIS	70855	3,6	13181	56993	69	154	38	69	351	4
TULCEA	20268	1,0	7512	12380	36	67	19	42	212	37
VASLUI	24871	1,2	12189	12357	22	110	16	41	136	29
VALCEA	32117	1,6	13129	18558	64	170	42	39	115	24
VRANCEA	24306	1,2	7850	16149	35	114	17	27	114	32
MUN. BUCURESTI	372427	18,7	34162	336691	64	152	116	105	1138	1
ILFOV	37814	1,9	5181	32300	31	95	21	13	173	20

*) The total number of incorporations (col 1)

Table no. 5

**Number of incorporations in the trade registers by counties and business categories
during December 1990 – March 2010**

County	Total		out of which:							
			PF	companies: 1426156				RA	SC	APJ
	SNC	SCS		SRL	SA					
	No.	%	No.	No.	No.	No.	No.	No.	No.	
0	1	2	3	4	5	6	7	8	9	10
Total ROMÂNIA	1992411	100,0	557204	32678	1607	1358118	33746	1390	2038	5630
ALBA	31998	1,6	11824	890	11	18479	574	38	36	146
ARAD	48589	2,4	18801	54	13	28759	702	30	60	170
ARGES	50803	2,5	16748	107	15	32842	841	29	48	173
BACAU	49666	2,5	17381	1299	4	29890	747	35	150	160
BIHOR	61578	3,1	16953	127	47	43267	930	40	63	151
BISTRITA-NASAUD	24680	1,2	9195	146	22	14722	422	28	46	99
BOTOSANI	24306	1,2	11571	468	1	11593	460	21	40	152
BRASOV	62191	3,1	14750	239	20	46061	891	49	58	123
BRAILA	27699	1,4	8195	376	12	18407	537	30	42	100
BUZAU	35931	1,8	11123	3747	46	20196	593	28	46	152
CARAS-SEVERIN	24114	1,2	8587	118	9	14738	475	39	42	106
CALARASI	20066	1,0	6395	609	3	12570	361	18	22	88
CLUJ	91957	4,6	25140	2112	21	63067	1345	52	62	158
CONSTANTA	82447	4,1	17221	311	23	63019	1526	51	87	209
COVASNA	17106	0,9	6556	148	4	9954	309	24	41	70
DAMBOVITA	37025	1,9	17033	60	8	19222	502	30	32	138
DOLJ	52296	2,6	12148	1560	8	37421	912	40	39	168
GALATI	47222	2,4	11234	1574	6	33339	865	30	35	139
GIURGIU	16586	0,8	4106	35	8	11984	330	23	15	85
GORJ	23410	1,2	6188	29	1	16425	506	51	26	184
HARGHITA	31015	1,6	13536	62	7	16731	500	24	64	91
HUNEDOARA	40379	2,0	11334	1166	98	26927	696	42	33	83
IALOMITA	18566	0,9	7256	269	12	10549	355	15	27	83
IASI	65810	3,3	21113	508	111	42756	1035	34	87	166
MARAMURES	50469	2,5	20824	1927	23	26880	608	38	43	126
MEHEDINTI	22185	1,1	7833	427	3	13455	342	19	19	87
MURES	49836	2,5	19319	37	34	29506	684	30	68	158
NEAMT	42655	2,1	16136	3293	30	22249	686	30	66	165
OLT	27535	1,4	10797	1611	1	14404	503	26	27	166
PRAHOVA	66550	3,3	21798	3122	15	40379	934	52	67	183
SALAJ	19798	1,0	8076	600	4	10648	300	19	41	110
SATU MARE	33864	1,7	11845	283	9	21089	481	20	41	96
SIBIU	39275	2,0	11160	778	49	26417	680	34	37	120
SUCEAVA	49312	2,5	23503	438	8	24456	599	31	73	204
TELEORMAN	22833	1,1	8321	272	399	13194	434	21	33	159
TIMIS	70855	3,6	13181	616	33	55473	1291	38	69	154
TULCEA	20268	1,0	7512	1363	114	10673	484	19	36	67
VASLUI	24871	1,2	12189	90	13	12007	424	16	22	110
VALCEA	32117	1,6	13129	364	6	17836	506	42	64	170
VRANCEA	24306	1,2	7850	356	10	15458	466	17	35	114
MUN. BUCURESTI	372427	18,7	34162	1038	313	329349	7233	116	64	152
ILFOV	37814	1,9	5181	49	33	31727	677	21	31	95

Table no. 6

Operations performed in the trade registers by counties and categories of registration in the month of March 2010

County	Total of operations carried on		out of which:					
			New incorporations		Changes in statutory documents		Strike off companies	
	No.	%	No.	%	No.	%	No.	%
0	1	2	3	4	5	6	9	10
Total ROMÂNIA	172625	100,0	11893	6,9	156317	90,6	4415	2,6
ALBA	2681	100,0	220	8,2	2365	88,2	96	3,6
ARAD	4190	100,0	270	6,4	3822	91,2	98	2,3
ARGES	4615	100,0	244	5,3	4239	91,9	132	2,9
BACAU	3906	100,0	268	6,9	3509	89,8	129	3,3
BIHOR	5953	100,0	450	7,6	5352	89,9	151	2,5
BISTRITA-NASAUD	1891	100,0	172	9,1	1684	89,1	35	1,9
BOTOSANI	899	100,0	144	16,0	710	79,0	45	5,0
BRASOV	5961	100,0	308	5,2	5537	92,9	116	1,9
BRAILA	2945	100,0	217	7,4	2587	87,8	141	4,8
BUZAU	3536	100,0	161	4,6	3296	93,2	79	2,2
CARAS-SEVERIN	1652	100,0	105	6,4	1506	91,2	41	2,5
CALARASI	1455	100,0	125	8,6	1299	89,3	31	2,1
CLUJ	9370	100,0	491	5,2	8613	91,9	266	2,8
CONSTANTA	7866	100,0	412	5,2	7295	92,7	159	2,0
COVASNA	1159	100,0	134	11,6	975	84,1	50	4,3
DAMBOVITA	2451	100,0	241	9,8	2137	87,2	73	3,0
DOLJ	4602	100,0	279	6,1	4209	91,5	114	2,5
GALATI	3885	100,0	312	8,0	3479	89,5	94	2,4
GIURGIU	1174	100,0	86	7,3	1064	90,6	24	2,0
GORJ	1924	100,0	151	7,8	1739	90,4	34	1,8
HARGHITA	3255	100,0	255	7,8	2851	87,6	149	4,6
HUNEDOARA	3360	100,0	239	7,1	3054	90,9	67	2,0
IALOMITA	1297	100,0	106	8,2	1163	89,7	28	2,2
IASI	6595	100,0	636	9,6	5791	87,8	168	2,5
MARAMURES	3958	100,0	251	6,3	3614	91,3	93	2,3
MEHEDINTI	1250	100,0	112	9,0	1099	87,9	39	3,1
MURES	3804	100,0	249	6,5	3453	90,8	102	2,7
NEAMT	3356	100,0	218	6,5	3030	90,3	108	3,2
OLT	934	100,0	133	14,2	750	80,3	51	5,5
PRAHOVA	6229	100,0	400	6,4	5625	90,3	204	3,3
SALAJ	1975	100,0	134	6,8	1790	90,6	51	2,6
SATU MARE	2855	100,0	220	7,7	2556	89,5	79	2,8
SIBIU	3286	100,0	247	7,5	2935	89,3	104	3,2
SUCEAVA	4141	100,0	218	5,3	3825	92,4	98	2,4
TELEORMAN	1710	100,0	140	8,2	1522	89,0	48	2,8
TIMIS	6951	100,0	439	6,3	6330	91,1	182	2,6
TULCEA	1520	100,0	147	9,7	1338	88,0	35	2,3
VASLUI	849	100,0	111	13,1	714	84,1	24	2,8
VALCEA	2693	100,0	159	5,9	2431	90,3	103	3,8
VRANCEA	2715	100,0	121	4,5	2540	93,6	54	2,0
MUN. BUCURESTI	33875	100,0	2106	6,2	31132	91,9	637	1,9
ILFOV	3902	100,0	462	11,8	3357	86,0	83	2,1

*) by effect of implementation of Law no. 314/2001, art.1 and art. 6

Table no.7

Number of incorporations in the trade registers by counties and capital sources in the month of March 2010

County	Total		out of which:						Rnking by: *	
			Private capital				State majority capital			Mixed capital (state+private)
			out of which:				out of which:			
			PF	Companies	SC	APJ	RA	Compani es		Companies
No.	%	No.	No.	No.		No.	No.	No.		
0	1	2	3	4	5	6	7	8	9	
Total ROMÂNIA	11893	100,0	6592	5249		26		9	17	X
ALBA	220	1,8	142	78						21
ARAD	270	2,3	171	98		1				12
ARGES	244	2,1	138	105				1		18
BACAU	268	2,3	160	108						13
BIHOR	450	3,8	257	193						5
BISTRITA-NASAUD	172	1,4	113	59						26
BOTOSANI	144	1,2	81	46		17				31
BRASOV	308	2,6	168	139		1				10
BRAILA	217	1,8	163	53		1				25
BUZAU	161	1,4	82	79						27
CARAS-SEVERIN	105	0,9	60	45						41
CALARASI	125	1,1	74	48					3	36
CLUJ	491	4,1	292	199						3
CONSTANTA	412	3,5	151	261						7
COVASNA	134	1,1	96	38						33
DAMBOVITA	241	2,0	166	75						19
DOLJ	279	2,3	155	124						11
GALATI	312	2,6	176	135		1				42
GIURGIU	86	0,7	34	52						9
GORJ	151	1,3	88	63						29
HARGHITA	255	2,1	212	42		1				14
HUNEDOARA	239	2,0	133	106						20
IALOMITA	106	0,9	65	41						40
IASI	636	5,3	444	192						2
MARAMURES	251	2,1	174	76					1	15
MEHEDINTI	112	0,9	84	28						38
MURES	249	2,1	157	86				6		16
NEAMT	218	1,8	138	80						23
OLT	133	1,1	74	58		1				35
PRAHOVA	400	3,4	244	154				2		8
SALAJ	134	1,1	94	40						34
SATU MARE	220	1,8	140	80						22
SIBIU	247	2,1	172	75						17
SUCEAVA	218	1,8	144	74						24
TELEORMAN	140	1,2	82	57		1				32
TIMIS	439	3,7	238	201						6
TULCEA	147	1,2	97	50						30
VASLUI	111	0,9	75	36						39
VALCEA	159	1,3	121	38						28
VRANCEA	121	1,0	61	60						37
MUN. BUCURESTI	2106	17,7	770	1322		2			12	1
ILFOV	462	3,9	106	355					1	4

*) The total number of incorporations (col 1)

*** Less than 0,01%

Table no.8

Number of incorporations in the trade registers by counties and business categories in the month of March 2010

County	Total		out of which:							
			PF	companies: 5275				RA	SC	APJ
	SNC	SCS		SRL	SA					
	No.	%	No.	No.	No.	No.	No.	No.		
0	1	2	3	4	5	6	7	8	9	
Total ROMÂNIA	11893	100,0	6592			5239	36			26
ALBA	220	1,8	142			78				
ARAD	270	2,3	171			97	1			1
ARGES	244	2,1	138			105	1			
BACAU	268	2,3	160			108				
BIHOR	450	3,8	257			192	1			
BISTRITA-NASAUD	172	1,4	113			59				
BOTOSANI	144	1,2	81			46				17
BRASOV	308	2,6	168			139				1
BRAILA	217	1,8	163			53				1
BUZAU	161	1,4	82			79				
CARAS-SEVERIN	105	0,9	60			45				
CALARASI	125	1,1	74			51				
CLUJ	491	4,1	292			198	1			
CONSTANTA	412	3,5	151			260	1			
COVASNA	134	1,1	96			35	3			
DAMBOVITA	241	2,0	166			74	1			
DOLJ	279	2,3	155			124				
GALATI	312	2,6	176			135				1
GIURGIU	86	0,7	34			52				
GORJ	151	1,3	88			63				
HARGHITA	255	2,1	212			42				1
HUNEDOARA	239	2,0	133			106				
IALOMITA	106	0,9	65			41				
IASI	636	5,3	444			190	2			
MARAMURES	251	2,1	174			76	1			
MEHEDINTI	112	0,9	84			28				
MURES	249	2,1	157			92				
NEAMT	218	1,8	138			80				
OLT	133	1,1	74			58				1
PRAHOVA	400	3,4	244			155	1			
SALAJ	134	1,1	94			40				
SATU MARE	220	1,8	140			80				
SIBIU	247	2,1	172			75				
SUCEAVA	218	1,8	144			74				
TELEORMAN	140	1,2	82			57				1
TIMIS	439	3,7	238			198	3			
TULCEA	147	1,2	97			50				
VASLUI	111	0,9	75			36				
VALCEA	159	1,3	121			38				
VRANCEA	121	1,0	61			60				
MUN. BUCURESTI	2106	17,7	770			1323	11			2
ILFOV	462	3,9	106			347	9			

Table no. 9

Number of incorporations in the trade registers by domains of activity and business categories in the month of March 2010

CAEN seg.	Field of activity	Total		out of which:							
				PF	companies: 5275				RA	SC	APJ
		SNC	SCS		SRL	SA					
		No.	%	No.	No.	No.	No.	No.	No.	No.	
0	1	2	3	4	5	6	7	8	9	10	11
	Total ROMÂNIA	11893	100,0	6592			5239	36			26
1	Agriculture, hunting and related service activities	686	5,8	496			178				12
2	Forestry and logging	55	0,5	28			27				
3	Fishing and aquaculture	127	1,1	110			17				
5	Mining of hard and brown coal										
6	Extraction of crude petroleum and natural gas	1	0,0				1				
7	Mining of metal ores	2	0,0				2				
8	Other mining and quarrying	8	0,1				8				
9	Mining support service activities	2	0,0				2				
10	Manufacture of food products	149	1,3	54			95				
11	Manufacture of beverages	10	0,1	7			2	1			
12	Manufacture of tobacco products										
13	Manufacture of textiles	7	0,1	2			5				
14	Manufacture of wearing apparel	79	0,7	41			38				
15	Tanning and dressing of leather; manufacture of luggage, handbags, saddlery, harness and footwear; dressing and dyeing of fur	20	0,2	10			10				
16	Manufacture of wood and of products of wood and cork, except furniture; manufacture of articles of straw and plaiting materials	100	0,8	55			45				
17	Manufacture of paper and paper products	9	0,1	3			6				
18	Printing and reproduction of recorded media	16	0,1	6			10				
19	Manufacture of coke and refined petroleum products										
20	Manufacture of chemicals and chemical products	9	0,1				9				
21	Manufacture of basic pharmaceutical products and pharmaceutical preparations	2	0,0				2				
22	Manufacture of rubber and plastic products	25	0,2	7			18				
23	Manufacture of other non-metallic mineral products	49	0,4	30			19				
24	Manufacture of basic metals	3	0,0	1			2				
25	Manufacture of fabricated metal products, except machinery and equipment	94	0,8	50			42	2			
26	Manufacture of computer, electronic and optical products	12	0,1	1			11				
27	Manufacture of electrical equipment	5	0,0	1			4				
28	Manufacture of machinery and equipment n.e.c.	8	0,1	1			6	1			
29	Manufacture of motor vehicles, trailers and semi-trailers	2	0,0				2				
30	Manufacture of other transport equipment	11	0,1				11				
31	Manufacture of furniture	36	0,3	20			16				
32	Other manufacturing	44	0,4	32			12				
33	Repair and installation of machinery and equipment	52	0,4	26			25	1			
35	Electricity, gas, steam and air conditioning supply	76	0,6				75	1			
36	Water collection, treatment and supply	5	0,0				2	3			
37	Sewerage	4	0,0	3			1				
38	Waste collection, treatment and disposal activities; materials recovery	48	0,4	7			40	1			
39	Remediation activities and other waste management services	1	0,0				1				
41	Construction of buildings	426	3,6	101			322	3			
42	Civil engineering	49	0,4	3			43	3			
43	Specialised construction activities	435	3,7	272			163				
45	Wholesale and retail trade and repair of motor vehicles and motorcycles	352	3,0	128			224				
46	Wholesale trade, except of motor vehicles and motorcycles	1219	10,2	404			799	3			13
47	Retail trade, except of motor vehicles and motorcycles	2643	22,2	1692			948	3			
49	Land transport and transport via pipelines	440	3,7	182			255	3			
50	Water transport	2	0,0	1			1				

Table no. 10

Number of incorporated trading companies and the value of the subscribed share capital, by counties, in the month of March 2010

County	Total registered companies		Subscribed capital		Average subscribed capital on company
	No.	%	thousand Lei	%	thousand Lei
0	1	2	3	4	5
Total ROMÂNIA	5275	100,0	1841032,4	100,0	350,6
ALBA	78	1,5	145,2	***	1,9
ARAD	98	1,9	424,3	0,0	4,3
ARGES	106	2,0	110,3	***	1,1
BACAU	108	2,0	535,5	0,0	5,0
BIHOR	193	3,7	2304,1	0,1	11,9
BISTRITA-NASAUD	59	1,1	313,7	0,0	5,3
BOTOSANI	46	0,9	11,2	***	0,2
BRASOV	139	2,6	1245,4	0,1	9,0
BRAILA	53	1,0	15,7	***	0,3
BUZAU	79	1,5	29,7	***	0,4
CARAS-SEVERIN	45	0,9	4046,2	0,2	89,9
CALARASI	51	1,0	321,6	0,0	6,3
CLUJ	199	3,8	693,9	0,0	3,5
CONSTANTA	261	4,9	2675,4	0,1	10,3
COVASNA	38	0,7	241,2	0,0	6,9
DAMBOVITA	75	1,4	416,3	0,0	5,6
DOLJ	124	2,4	88,8	***	0,7
GALATI	135	2,6	522,4	0,0	3,9
GIURGIU	52	1,0	175,5	***	3,4
GORJ	63	1,2	53,4	***	0,8
HARGHITA	42	0,8	10,4	***	0,2
HUNEDOARA	106	2,0	265,0	0,0	2,5
IALOMITA	41	0,8	49,1	***	1,2
IASI	192	3,6	546,7	0,0	2,8
MARAMURES	77	1,5	321,9	0,0	4,2
MEHEDINTI	28	0,5	7,7	***	0,3
MURES	92	1,7	34633,5	1,9	376,5
NEAMT	80	1,5	56,0	***	0,7
OLT	58	1,1	92,0	***	1,6
PRAHOVA	156	3,0	246,8	0,0	1,6
SALAJ	40	0,8	15,6	***	0,4
SATU MARE	80	1,5	29,9	***	0,4
SIBIU	75	1,4	64,2	***	0,9
SUCEAVA	74	1,4	66,9	***	0,9
TELEORMAN	57	1,1	5021,6	0,3	88,1
TIMIS	201	3,8	6876,1	0,4	34,2
TULCEA	50	0,9	71,0	***	1,4
VASLUI	36	0,7	40,4	***	1,1
VALCEA	38	0,7	19,4	***	0,5
VRANCEA	60	1,1	44,4	***	0,7
MUN. BUCURESTI	1334	25,3	1686469,2	91,6	1275,7
ILFOV	356	6,7	91714,9	5,0	261,3

Note: The average does not include filials because according to the Law no.31/1990 they are not juridical persons

*** Less than 0,01%

Table no. 11

Number of incorporated trading companies and the value of the subscribed share capital by legal forms, in the month of March 2010

Company type	Total registered companies		Subscribed capital		Average subscribed capital on company
	No.	%	thousand Lei	%	thousand Lei
0	1	2	3	4	5
Total ROMÂNIA	5275	100,0	1841032,4	100,0	350,6
SNC					
SCS					
SA	36	0,7	1144860,7	62,2	54517,2
SRL	5239	99,3	696171,7	37,8	133,1

Note: The average does not include filials because according to the Law no.31/1990 they are not juridical persons

*** Less than 0,01%

Diagram no.5

