



MINISTRY OF JUSTICE

THE NATIONAL TRADE REGISTER OFFICE

București, Bd. Unirii nr. 74, Bl. J3b, tronson II+III, sector 3; Telefon: +40 21 316.08.04, 316.08.10; Fax: +40 21 316.08.03; Cod poștal: 030837  
Website: [www.onrc.ro](http://www.onrc.ro); E-mail: [onrc@onrc.ro](mailto:onrc@onrc.ro); Cod identificare Fiscală: 14942091

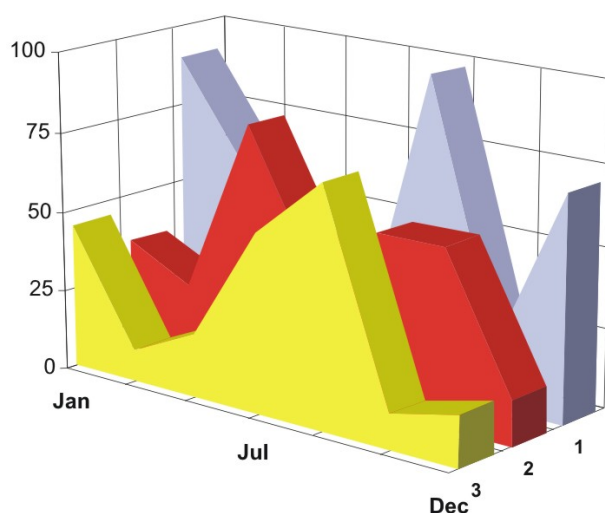
# OPERATIONS IN THE CENTRAL TRADE REGISTER

## STATISTIC SYNTHESIS

OF

**RECORDS IN THE CENTRAL TRADE REGISTER**

**- 28<sup>th</sup> February 2010 - provisional data -**



- ISSUE No. 219 -

**MINISTRY OF JUSTICE  
THE NATIONAL TRADE REGISTER OFFICE**

---

- Operations such as incorporation of trading companies, submission of changes, and strike-off are carried out based on Law No.26/1990, as republished, Law No.31/1990, as republished and on the Methodological Norms no. P/608/1998.
  
- This work reflects the evolution of the operations with the Trade Register Office attached to Bucharest Law Court and the Trade Register Offices attached to County Law Courts.
  
- The data contained in the Central Trade Register refer to operations for which law sets out the obligation of being registered in the trade registers kept by the 42 trade register offices attached to law courts.

<ul style="list-style-type: none"><li>• <i>The content of this publication shall not be reproduced, partly or entirely, in original or modified form, and shall not be stored in a recovery system and shall not be transmitted in any form or by any means without prior written authorization of the Ministry of Justice – The National Trade Register Office.</i></li><li>• <i>The content of this publication December be used in articles, studies, books, as supporting or explanatory data only by clearly and accurately indicating the source.</i></li></ul>
---

# CONTENTS

Page

<b>1</b>	<b>Definitions</b>	<b>1</b>
<b>2.1</b>	<b>Data related to the period December 1990 –February 2010</b>	<b>3</b>
<hr/>		
	<b>Table no. 1 – Operations performed in the trade registers by categories of registration during December 1990 –February 2010, total by country and by counties, shares of counties in the total by country</b>	<b>3</b>
	<b>Table no. 2 – Operations performed in the trade registers by categories of registration during 1990 –February 2010, total by country and counties, share of categories of operations in the total of each county</b>	<b>4</b>
	<b>Table no. 3 – Number and structure of incorporations in the trade registers during 1990-February 2010</b>	<b>5</b>
	<b>Chart no. 1 – Structure by years of incorporations in the trade register</b>	
	<b>Table no. 4 – Number of incorporations in the trade registers by counties and capital sources during 1990 - February 2010</b>	<b>6</b>
	<b>Table no. 5 – Number of incorporations in the trade registers by counties and business categories during 1990 –February 2010</b>	<b>7</b>
<hr/>		
<b>2.2</b>	<b>Data related to February 2010</b>	<b>8</b>
<hr/>		
	<b>Table no. 6 – Operations performed in the trade registers by counties and categories of registrations in the month of February 2010</b>	<b>8</b>
	<b>Table no. 7 – Number of incorporations in the trade registers by counties and capital sources in the month of February 2010</b>	<b>9</b>
	<b>Table no. 8 – Number of incorporations in the trade registers by counties and business categories in the month of February 2010</b>	<b>10</b>
	<b>Table no. 9 –Number of incorporations in the trade registers by domains of activity and business categories in the month of February 2010</b>	<b>11-12</b>
	<b>Table no. 10 – Number of incorporated trading companies and the value of subscribed share capital, by counties, in the month of February 2010</b>	<b>13</b>
	<b>Table no. 11– Number of incorporated trading companies and the value of subscribed share capital by legal forms, in the month of February 2010</b>	<b>14</b>
	<b>Chart no. 5 – Average value of subscribed share capital by types of trading companies in the month of February 2010</b>	<b>14</b>

## Definitions

The Trade Register Office was established based on Law No. 26/1990, as republished and subsequently amended and supplemented, operates as an active institution since 1990 and is twofold structured:

- at national level, represented by the National Trade Register Office organized under the authority of the Ministry of Justice
- at local level, represented by the 42 Trade Register Offices attached to Law Courts, organized under the subordination of the National Trade Register Office

Categories of persons liable to registration in the trade register:

- natural persons: authorized natural persons, individual enterprises and family enterprises currently carrying on trading activities;
- legal persons represented by: Trading Companies, National Societies and Companies, National R&D Institutes, Autonomous Administrations, Co-operative Societies, Agricultural Co-operatives, Co-operative Organizations, Economic Interest Groupings, European Economic Interest Groupings, European Societies, European Co-operative Societies, branches of trading companies with legal establishment, operation and incorporation regime of trading company legal form under which they were incorporated.

### • Terms used in tables and charts

➤ **Number of companies**, depending on the table, represents the number of trading companies incorporated during the reference period, the number of trading companies struck-off from the trade register. The following forms of organization are included: limited liability companies, joint-stock companies, limited partnerships by share, limited partnerships, general partnerships, and branches thereof.

#### ➤ **Value of subscribed share capital:**

- **total, expressed in national currency:** the share capital value resulted by adding up the subscribed values (in cash and in kind) in national currency (lei)

#### ➤ **Regions of economic development:**

<i>North-East:</i>	Suceava, Botoșani, Neamț, Iași, Bacău, Vaslui.
<i>South-East:</i>	Vrancea, Galați, Buzău, Brăila, Tulcea, Constanța.
<i>South-Muntenia:</i>	Argeș, Dâmbovița, Prahova, Teleorman, Giurgiu, Călărași, Ialomița.
<i>South-West Oltenia:</i>	Gorj, Vâlcea, Dolj, Mehedinți, Olt.
<i>West:</i>	Arad, Caraș-Severin, Hunedoara, Timiș.
<i>North-West:</i>	Bihor, Bistrița, Cluj, Satu Mare, Sălaj, Maramureș.
<i>Center:</i>	Alba, Brașov, Covasna, Harghita, Mureș, Sibiu.
<i>Bucharest-Ilfov:</i>	București, Ilfov.

NACE Code – The classification of economic activities in the national economy was approved by GO No. 656/1997, amended by Order No 601/2002 and Order no. 337/2007 of the President of the

National Institute of Statistics, and complies with the international classification used in statistic reports and official documents. The activities are ranked by the harmonization principle, by sections, divisions, groups and classes.

### Abbreviations

- **PF** - Natural Person; the following forms of organization are included in this category: natural persons and family associations registered until 25.04.2008, authorized natural persons, individual enterprises and family enterprises.
- **SNC** - General Partnership
- **SCS** - Limited Partnership
- **SCA** - Limited Partnership by Share
- **SA** - Joint-Stock Company
- **SRL** - Limited Liability Company
- **RA** - Autonomous Administration
- **APJ** - Other legal persons having the obligation to register in the trade register: National R&D Institutes, Economic Interest Groupings, European Economic Interest Groupings, European Societies, European Co-operative Societies, Agricultural Co-operatives, Co-operative Organizations.

### Sources of Information:

The integrated IT system of the trade register is designed by The National Trade Register Office in compliance with the provisions of the related legislation in force. The source of information consists of the trade registers organized in computerized system, kept by the trade register offices attached to law courts.

Table no. 1

**Operations performed in the trade registers by categories of registration during  
December 1990 – February 2010, total by country and by counties, share of  
counties in the total by country**

Counties	Total of registered operations		out of which :					
			Registered companies		Changes in statutory documents		Strike off companies	
	No.	%	No.	%	No.	%	No.	%
0	1	2	3	4	7	8	11	12
<b>Total ROMÂNIA</b>	<b>12943125</b>	<b>100,0</b>	<b>1980520</b>	<b>100,0</b>	<b>10328655</b>	<b>100,0</b>	<b>633950</b>	<b>100,0</b>
ALBA	193773	1,5	31778	1,6	154140	1,5	7855	1,2
ARAD	299887	2,3	48319	2,4	238407	2,3	13161	2,1
ARGES	313290	2,4	50559	2,6	250468	2,4	12263	1,9
BACAU	294940	2,3	49398	2,5	230641	2,2	14901	2,4
BIHOR	392660	3,0	61128	3,1	313066	3,0	18466	2,9
BISTRITA-NASAUD	154926	1,2	24508	1,2	122427	1,2	7991	1,3
BOTOSANI	118759	0,9	24162	1,2	87518	0,8	7079	1,1
BRASOV	510594	3,9	61883	3,1	432991	4,2	15720	2,5
BRAILA	201439	1,6	27482	1,4	168051	1,6	5906	0,9
BUZAU	224589	1,7	35770	1,8	175753	1,7	13066	2,1
CARAS-SEVERIN	152638	1,2	24009	1,2	118599	1,1	10030	1,6
CALARASI	116110	0,9	19941	1,0	90273	0,9	5896	0,9
CLUJ	578628	4,5	91466	4,6	466033	4,5	21129	3,3
CONSTANTA	547290	4,2	82036	4,1	435028	4,2	30226	4,8
COVASNA	112788	0,9	16971	0,9	90137	0,9	5680	0,9
DAMBOVITA	186899	1,4	36784	1,9	134217	1,3	15898	2,5
DOLJ	344822	2,7	52016	2,6	276744	2,7	16062	2,5
GALATI	333188	2,6	46910	2,4	268734	2,6	17544	2,8
GIURGIU	101795	0,8	16500	0,8	79366	0,8	5929	0,9
GORJ	202569	1,6	23259	1,2	171540	1,7	7770	1,2
HARGHITA	191315	1,5	30760	1,6	153364	1,5	7191	1,1
HUNEDOARA	262542	2,0	40140	2,0	207002	2,0	15400	2,4
IALOMITA	119589	0,9	18460	0,9	94202	0,9	6927	1,1
IASI	428422	3,3	65174	3,3	345716	3,3	17532	2,8
MARAMURES	264137	2,0	50218	2,5	200854	1,9	13065	2,1
MEHEDINTI	134396	1,0	22073	1,1	103497	1,0	8826	1,4
MURES	361881	2,8	49588	2,5	295711	2,9	16582	2,6
NEAMT	280988	2,2	42437	2,1	221667	2,1	16884	2,7
OLT	156907	1,2	27402	1,4	118804	1,2	10701	1,7
PRAHOVA	438681	3,4	66150	3,3	352254	3,4	20277	3,2
SALAJ	112550	0,9	19664	1,0	86330	0,8	6556	1,0
SATU MARE	201215	1,6	33645	1,7	155500	1,5	12070	1,9
SIBIU	283655	2,2	39028	2,0	233276	2,3	11351	1,8
SUCEAVA	308068	2,4	49096	2,5	239267	2,3	19705	3,1
TELEORMAN	137643	1,1	22693	1,1	109369	1,1	5581	0,9
TIMIS	426747	3,3	70416	3,6	335543	3,2	20788	3,3
TULCEA	153924	1,2	20121	1,0	127405	1,2	6398	1,0
VASLUI	159553	1,2	24760	1,3	125033	1,2	9760	1,5
VALCEA	196261	1,5	31958	1,6	152976	1,5	11327	1,8
VRANCEA	158429	1,2	24185	1,2	128184	1,2	6060	1,0
MUN. BUCURESTI	2579141	19,9	370321	18,7	2078738	20,1	130082	20,5
ILFOV	205497	1,6	37352	1,9	159830	1,5	8315	1,3

Table no. 2

**Operations performed in the trade registers during December 1990 – February 2010, total by country and counties, share of categories of operations in the total of each county**

Counties	Total of registered operations		out of which :					
			Registered companies		Changes in statutory documents		Strike off companies	
	No.	%	No.	%	No.	%	No.	%
0	1	2	3	4	7	8	11	12
<b>Total ROMÂNIA</b>	<b>12943125</b>	<b>100,0</b>	<b>1980520</b>	<b>15,3</b>	<b>10328655</b>	<b>79,8</b>	<b>633950</b>	<b>4,9</b>
ALBA	193773	100,0	31778	16,4	154140	79,5	7855	4,1
ARAD	299887	100,0	48319	16,1	238407	79,5	13161	4,4
ARGES	313290	100,0	50559	16,1	250468	79,9	12263	3,9
BACAU	294940	100,0	49398	16,7	230641	78,2	14901	5,1
BIHOR	392660	100,0	61128	15,6	313066	79,7	18466	4,7
BISTRITA-NASAUD	154926	100,0	24508	15,8	122427	79,0	7991	5,2
BOTOSANI	118759	100,0	24162	20,3	87518	73,7	7079	6,0
BRASOV	510594	100,0	61883	12,1	432991	84,8	15720	3,1
BRAILA	201439	100,0	27482	13,6	168051	83,4	5906	2,9
BUZAU	224589	100,0	35770	15,9	175753	78,3	13066	5,8
CARAS-SEVERIN	152638	100,0	24009	15,7	118599	77,7	10030	6,6
CALARASI	116110	100,0	19941	17,2	90273	77,7	5896	5,1
CLUJ	578628	100,0	91466	15,8	466033	80,5	21129	3,7
CONSTANTA	547290	100,0	82036	15,0	435028	79,5	30226	5,5
COVASNA	112788	100,0	16971	15,0	90137	79,9	5680	5,0
DAMBOVITA	186899	100,0	36784	19,7	134217	71,8	15898	8,5
DOLJ	344822	100,0	52016	15,1	276744	80,3	16062	4,7
GALATI	333188	100,0	46910	14,1	268734	80,7	17544	5,3
GIURGIU	101795	100,0	16500	16,2	79366	78,0	5929	5,8
GORJ	202569	100,0	23259	11,5	171540	84,7	7770	3,8
HARGHITA	191315	100,0	30760	16,1	153364	80,2	7191	3,8
HUNEDOARA	262542	100,0	40140	15,3	207002	78,8	15400	5,9
IALOMITA	119589	100,0	18460	15,4	94202	78,8	6927	5,8
IASI	428422	100,0	65174	15,2	345716	80,7	17532	4,1
MARAMURES	264137	100,0	50218	19,0	200854	76,0	13065	4,9
MEHEDINTI	134396	100,0	22073	16,4	103497	77,0	8826	6,6
MURES	361881	100,0	49588	13,7	295711	81,7	16582	4,6
NEAMT	280988	100,0	42437	15,1	221667	78,9	16884	6,0
OLT	156907	100,0	27402	17,5	118804	75,7	10701	6,8
PRAHOVA	438681	100,0	66150	15,1	352254	80,3	20277	4,6
SALAJ	112550	100,0	19664	17,5	86330	76,7	6556	5,8
SATU MARE	201215	100,0	33645	16,7	155500	77,3	12070	6,0
SIBIU	283655	100,0	39028	13,8	233276	82,2	11351	4,0
SUCEAVA	308068	100,0	49096	15,9	239267	77,7	19705	6,4
TELEORMAN	137643	100,0	22693	16,5	109369	79,5	5581	4,1
TIMIS	426747	100,0	70416	16,5	335543	78,6	20788	4,9
TULCEA	153924	100,0	20121	13,1	127405	82,8	6398	4,2
VASLUI	159553	100,0	24760	15,5	125033	78,4	9760	6,1
VALCEA	196261	100,0	31958	16,3	152976	77,9	11327	5,8
VRANCEA	158429	100,0	24185	15,3	128184	80,9	6060	3,8
MUN. BUCURESTI	2579141	100,0	370321	14,4	2078738	80,6	130082	5,0
ILFOV	205497	100,0	37352	18,2	159830	77,8	8315	4,0

Table no.3

Number and structure of incorporations in the trade registers during December 1990 - February 2010

Period (year, month)	Registered companies		Percentage	
	No.	%	%	
0	1	2	3	
<b>Total, 28 February 2010, out of which</b>	<b>1980520</b>	<b>100,00</b>		
Year 1990	81	0,00		
Year 1991	95840	4,84		
Year 1992	137456	6,94		
Year 1993	117078	5,91		
Year 1994	137445	6,94		
Year 1995	65479	3,31		
Year 1996	62089	3,13		
Year 1997	55663	2,81		
Year 1998	63878	3,23		
Year 1999	57197	2,89		
Year 2000	57268	2,89		
Year 2001	61265	3,09		
Year 2002	84780	4,28		
Year 2003	123582	6,24		
Year 2004	144284	7,29		
Year 2005	159464	8,05		
Year 2006	135371	6,84		
Year 2007	144728	7,31		
Year 2008	144173	7,28		
Year 2009	116037	5,86		
<b>Year 2010 (I - XII) out of which :</b>	<b>17362</b>			<b>100,0</b>
January	7739			44,6
February	9623			55,43

Note: Column 2 reveals the annual structure of incorporations; column 3 reveals the structure by months during the current year.

Diagram no.1

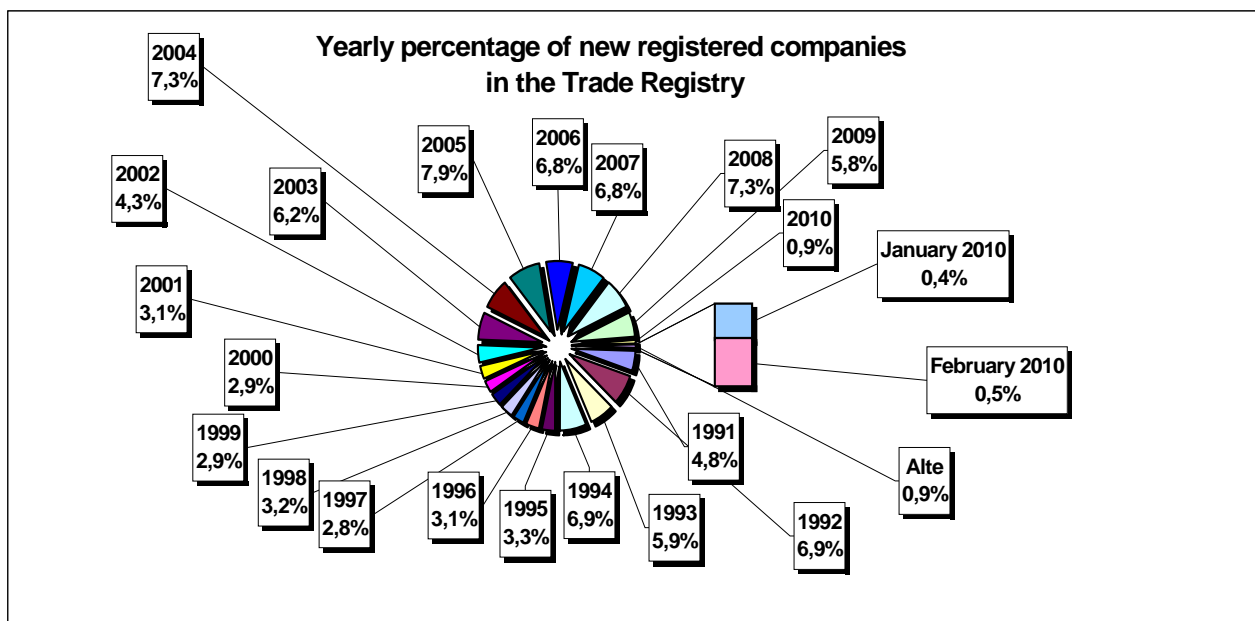


Table no. 4

**Number of incorporations in the trade registers by counties and capital sources during  
December 1990 - February 2010**

Counties	Total		out of which:						Ranking by: *	
			Private capital				State majority capital			Mixed capital (state+private)
			out of which:				out of which:			
			PF	Companies	SC	APJ	RA	Companie s		Companies
No.	%	No.	No.	No.	No.	No.	No.	No.		
0	1	2	3	4	5	6	6	7	8	9
<b>Total ROMÂNIA</b>	<b>1980520</b>	<b>100,0</b>	<b>550612</b>	<b>1409834</b>	<b>2040</b>	<b>5604</b>	<b>1390</b>	<b>2403</b>	<b>8644</b>	<b>X</b>
ALBA	31778	1,6	11682	19659	36	146	38	47	170	25
ARAD	48319	2,4	18630	29053	60	169	30	42	336	15
ARGES	50559	2,6	16610	33514	48	173	29	32	153	10
BACAU	49398	2,5	17221	31565	150	160	35	42	226	13
BIHOR	61128	3,1	16696	43807	63	151	40	62	309	8
BISTRITA-NASAUD	24508	1,2	9082	15115	46	99	28	29	109	30
BOTOSANI	24162	1,2	11490	12182	40	135	21	175	119	32
BRASOV	61875	3,1	14582	46805	58	122	49	87	172	7
BRAILA	27490	1,4	8032	19075	42	99	30	45	167	27
BUZAU	35770	1,8	11041	24330	46	152	28	42	131	22
CARAS-SEVERIN	24009	1,2	8527	15092	42	106	39	65	138	33
CALARASI	19941	1,0	6321	13315	22	88	18	81	96	38
CLUJ	91466	4,6	24848	66040	62	158	52	42	264	2
CONSTANTA	82036	4,1	17070	64024	88	209	51	51	543	3
COVASNA	16971	0,9	6460	10236	41	69	24	32	109	41
DAMBOVITA	36784	1,9	16867	19487	32	138	30	75	155	21
DOLJ	52016	2,6	11993	39516	39	167	40	58	203	9
GALATI	46910	2,4	11058	35455	35	138	30	51	143	16
GIURGIU	16500	0,8	4072	12086	15	85	23	109	110	42
GORJ	23259	1,2	6100	16715	26	184	51	83	100	34
HARGHITA	30760	1,6	13324	16983	64	90	24	43	232	26
HUNEDOARA	40140	2,0	11201	28400	33	83	42	95	286	18
IALOMITA	18460	0,9	7191	11007	27	83	15	46	91	40
IASI	65174	3,3	20669	43805	87	166	34	71	344	6
MARAMURES	50218	2,5	20650	29198	43	126	38	41	123	11
MEHEDINTI	22073	1,1	7749	14074	19	87	19	27	98	36
MURES	49588	2,5	19162	29965	69	158	30	36	168	12
NEAMT	42437	2,1	15998	25982	66	165	30	30	166	17
OLT	27402	1,4	10723	16274	27	165	26	64	123	28
PRAHOVA	66150	3,3	21554	43948	67	183	52	74	272	5
SALAJ	19664	1,0	7982	11420	41	110	19	28	64	39
SATU MARE	33645	1,7	11705	21607	42	96	20	42	134	23
SIBIU	39028	2,0	10988	27579	37	120	34	109	161	19
SUCEAVA	49096	2,5	23359	25141	73	206	31	65	221	14
TELEORMAN	22693	1,1	8239	14014	33	158	21	46	182	35
TIMIS	70416	3,6	12943	56792	69	154	38	69	351	4
TULCEA	20121	1,0	7415	12330	36	67	19	42	212	37
VASLUI	24760	1,3	12114	12321	22	110	16	41	136	29
VALCEA	31958	1,6	13008	18520	64	170	42	39	115	24
VRANCEA	24185	1,2	7789	16089	35	114	17	27	114	31
MUN. BUCURESTI	370321	18,7	33392	335369	64	150	116	105	1126	1
ILFOV	37352	1,9	5075	31945	31	95	21	13	172	20

\*) The total number of incorporations (col 1)

Table no. 5

**Number of incorporations in the trade registers by counties and business categories  
during December 1990 – February 2010**

County	Total		out of which:							
			PF	companies: 1420881				RA	SC	APJ
	SNC	SCS		SRL	SA					
	No.	%	No.	No.	No.	No.	No.	No.	No.	
0	1	2	3	4	5	6	7	8	9	10
<b>Total ROMÂNIA</b>	<b>1980520</b>	<b>100,0</b>	<b>550612</b>	<b>32678</b>	<b>1607</b>	<b>1352879</b>	<b>33710</b>	<b>1390</b>	<b>2040</b>	<b>5604</b>
ALBA	31778	1,6	11682	890	11	18401	574	38	36	146
ARAD	48319	2,4	18630	54	13	28662	701	30	60	169
ARGES	50559	2,6	16610	107	15	32737	840	29	48	173
BACAU	49398	2,5	17221	1299	4	29782	747	35	150	160
BIHOR	61128	3,1	16696	127	47	43075	929	40	63	151
BISTRITA-NASAUD	24508	1,2	9082	146	22	14663	422	28	46	99
BOTOSANI	24162	1,2	11490	468	1	11547	460	21	40	135
BRASOV	61883	3,1	14582	239	20	45922	891	49	58	122
BRAILA	27482	1,4	8032	376	12	18354	537	30	42	99
BUZAU	35770	1,8	11041	3747	46	20117	593	28	46	152
CARAS-SEVERIN	24009	1,2	8527	118	9	14693	475	39	42	106
CALARASI	19941	1,0	6321	609	3	12519	361	18	22	88
CLUJ	91466	4,6	24848	2112	21	62869	1344	52	62	158
CONSTANTA	82036	4,1	17070	311	23	62759	1525	51	88	209
COVASNA	16971	0,9	6460	148	4	9919	306	24	41	69
DAMBOVITA	36784	1,9	16867	60	8	19148	501	30	32	138
DOLJ	52016	2,6	11993	1560	8	37297	912	40	39	167
GALATI	46910	2,4	11058	1574	6	33204	865	30	35	138
GIURGIU	16500	0,8	4072	35	8	11932	330	23	15	85
GORJ	23259	1,2	6100	29	1	16362	506	51	26	184
HARGHITA	30760	1,6	13324	62	7	16689	500	24	64	90
HUNEDOARA	40140	2,0	11201	1166	98	26821	696	42	33	83
IALOMITA	18460	0,9	7191	269	12	10508	355	15	27	83
IASI	65174	3,3	20669	508	111	42566	1033	34	87	166
MARAMURES	50218	2,5	20650	1927	23	26804	607	38	43	126
MEHEDINTI	22073	1,1	7749	427	3	13427	342	19	19	87
MURES	49588	2,5	19162	37	34	29414	684	30	69	158
NEAMT	42437	2,1	15998	3293	30	22169	686	30	66	165
OLT	27402	1,4	10723	1611	1	14346	503	26	27	165
PRAHOVA	66150	3,3	21554	3122	15	40224	933	52	67	183
SALAJ	19664	1,0	7982	600	4	10608	300	19	41	110
SATU MARE	33645	1,7	11705	283	9	21009	481	20	42	96
SIBIU	39028	2,0	10988	778	49	26342	680	34	37	120
SUCEAVA	49096	2,5	23359	438	8	24382	599	31	73	206
TELEORMAN	22693	1,1	8239	272	399	13137	434	21	33	158
TIMIS	70416	3,6	12943	616	33	55275	1288	38	69	154
TULCEA	20121	1,0	7415	1363	114	10623	484	19	36	67
VASLUI	24760	1,3	12114	90	13	11971	424	16	22	110
VALCEA	31958	1,6	13008	364	6	17798	506	42	64	170
VRANCEA	24185	1,2	7789	356	10	15398	466	17	35	114
MUN. BUCURESTI	370321	18,7	33392	1038	313	328026	7222	116	64	150
ILFOV	37352	1,9	5075	49	33	31380	668	21	31	95

Table no. 6

**Operations performed in the trade registers by counties and categories of registration in the month of February 2010**

County	Total of operations carried on		out of which:					
			New incorporations		Changes in statutory documents		Strike off companies	
	No.	%	No.	%	No.	%	No.	%
0	1	2	3	4	5	6	9	10
<b>Total ROMÂNIA</b>	<b>120234</b>	<b>100,0</b>	<b>9623</b>	<b>8,0</b>	<b>106793</b>	<b>88,8</b>	<b>3818</b>	<b>3,2</b>
ALBA	1708	100,0	153	9,0	1472	86,2	83	4,9
ARAD	2674	100,0	230	8,6	2365	88,4	79	3,0
ARGES	2877	100,0	223	7,8	2567	89,2	87	3,0
BACAU	3014	100,0	258	8,6	2643	87,7	113	3,7
BIHOR	3807	100,0	385	10,1	3256	85,5	166	4,4
BISTRITA-NASAUD	1803	100,0	119	6,6	1644	91,2	40	2,2
BOTOSANI	754	100,0	105	13,9	597	79,2	52	6,9
BRASOV	3793	100,0	288	7,6	3405	89,8	100	2,6
BRAILA	1629	100,0	112	6,9	1440	88,4	77	4,7
BUZAU	2112	100,0	103	4,9	1927	91,2	82	3,9
CARAS-SEVERIN	937	100,0	88	9,4	819	87,4	30	3,2
CALARASI	844	100,0	93	11,0	714	84,6	37	4,4
CLUJ	6004	100,0	443	7,4	5349	89,1	212	3,5
CONSTANTA	4481	100,0	295	6,6	4096	91,4	90	2,0
COVASNA	903	100,0	95	10,5	761	84,3	47	5,2
DAMBOVITA	1569	100,0	135	8,6	1355	86,4	79	5,0
DOLJ	3712	100,0	270	7,3	3322	89,5	120	3,2
GALATI	2733	100,0	259	9,5	2390	87,4	84	3,1
GIURGIU	963	100,0	68	7,1	870	90,3	25	2,6
GORJ	1394	100,0	110	7,9	1212	86,9	72	5,2
HARGHITA	1973	100,0	116	5,9	1788	90,6	69	3,5
HUNEDOARA	2677	100,0	190	7,1	2420	90,4	67	2,5
IALOMITA	670	100,0	82	12,2	546	81,5	42	6,3
IASI	5107	100,0	490	9,6	4381	85,8	236	4,6
MARAMURES	2314	100,0	229	9,9	1991	86,0	94	4,1
MEHEDINTI	737	100,0	126	17,1	576	78,2	35	4,7
MURES	2509	100,0	223	8,9	2161	86,1	125	5,0
NEAMT	2316	100,0	190	8,2	2038	88,0	88	3,8
OLT	790	100,0	104	13,2	648	82,0	38	4,8
PRAHOVA	4365	100,0	293	6,7	3910	89,6	162	3,7
SALAJ	1054	100,0	111	10,5	898	85,2	45	4,3
SATU MARE	1831	100,0	160	8,7	1604	87,6	67	3,7
SIBIU	2324	100,0	223	9,6	2025	87,1	76	3,3
SUCEAVA	2805	100,0	208	7,4	2496	89,0	101	3,6
TELEORMAN	1018	100,0	102	10,0	891	87,5	25	2,5
TIMIS	5065	100,0	353	7,0	4567	90,2	145	2,9
TULCEA	1515	100,0	90	5,9	1396	92,1	29	1,9
VASLUI	749	100,0	106	14,2	607	81,0	36	4,8
VALCEA	2026	100,0	135	6,7	1809	89,3	82	4,0
VRANCEA	1904	100,0	105	5,5	1741	91,4	58	3,0
MUN. BUCURESTI	26818	100,0	1744	6,5	24604	91,7	470	1,8
ILFOV	1956	100,0	411	21,0	1492	76,3	53	2,7

\*) by effect of implementation of Law no. 314/2001, art.1 and art. 6

Table no.7

**Number of incorporations in the trade registers by counties and capital sources in the month of February 2010**

County	Total		out of which:						Ranking by: *	
			Private capital			State majority capital		Mixed capital (state+private)		
			out of which:			out of which:		Companies		
			PF	Companies	SC	APJ	RA	Companies		Companies
No.	%	No.	No.	No.		No.	No.	No.		
0	1	2	3	4	5		6	7	8	9
<b>Total ROMÂNIA</b>	<b>9623</b>	<b>100,0</b>	<b>5200</b>	<b>4410</b>	<b>3</b>	<b>2</b>		<b>5</b>	<b>3</b>	<b>X</b>
ALBA	153	1,6	114	39						22
ARAD	230	2,4	153	77						13
ARGES	223	2,3	109	112				2		15
BACAU	258	2,7	157	101						12
BIHOR	385	4,0	241	144						5
BISTRITA-NASAUD	119	1,2	77	42						26
BOTOSANI	105	1,1	78	27						32
BRASOV	288	3,0	155	133						9
BRAILA	112	1,2	76	36						28
BUZAU	103	1,1	52	51						35
CARAS-SEVERIN	88	0,9	37	51						40
CALARASI	93	1,0	54	38		1				38
CLUJ	443	4,6	248	195						3
CONSTANTA	295	3,1	129	165	1					7
COVASNA	95	1,0	68	27						37
DAMBOVITA	135	1,4	84	51						23
DOLJ	270	2,8	130	140						10
GALATI	259	2,7	164	94		1				11
GIURGIU	68	0,7	18	50						42
GORJ	110	1,1	54	56						30
HARGHITA	116	1,2	85	31						27
HUNEDOARA	190	2,0	111	79						19
IALOMITA	82	0,9	54	28						41
IASI	490	5,1	329	161						2
MARAMURES	229	2,4	158	71						14
MEHEDINTI	126	1,3	86	40						25
MURES	223	2,3	142	78	1			2		16
NEAMT	190	2,0	123	67						20
OLT	104	1,1	57	47						34
PRAHOVA	293	3,0	163	129				1		8
SALAJ	111	1,2	59	52						29
SATU MARE	160	1,7	105	54	1					21
SIBIU	223	2,3	144	79						17
SUCEAVA	208	2,2	127	81						18
TELEORMAN	102	1,1	45	57						36
TIMIS	353	3,7	175	178						6
TULCEA	90	0,9	56	34						39
VASLUI	106	1,1	73	33						31
VALCEA	135	1,4	104	31						24
VRANCEA	105	1,1	67	38						33
MUN. BUCURESTI	1744	18,1	641	1101					2	1
ILFOV	411	4,3	98	312					1	4

\*) The total number of incorporations (col 1)

\*\*\* Less than 0,01%



Table no.8

**Number of incorporations in the trade registers by counties and business categories in the month of February 2010**

County	Total		out of which:							
			PF	companies: 4418				RA	SC	APJ
				SNC	SCS	SRL	SA			
				No.	No.	No.	No.			
0	1	2	3	4	5	6	7	8	9	
<b>Total ROMÂNIA</b>	<b>9623</b>	<b>100,0</b>	<b>5200</b>	<b>1</b>		<b>4405</b>	<b>12</b>		<b>3</b>	<b>2</b>
ALBA	153	1,6	114			39				
ARAD	230	2,4	153			76	1			
ARGES	223	2,3	109			114				
BACAU	258	2,7	157			101				
BIHOR	385	4,0	241			144				
BISTRITA-NASAUD	119	1,2	77			42				
BOTOSANI	105	1,1	78			27				
BRASOV	288	3,0	155			133				
BRAILA	112	1,2	76			36				
BUZAU	103	1,1	52			51				
CARAS-SEVERIN	88	0,9	37	1		50				
CALARASI	93	1,0	54			38				1
CLUJ	443	4,6	248			194	1			
CONSTANTA	295	3,1	129			165			1	
COVASNA	95	1,0	68			27				
DAMBOVITA	135	1,4	84			51				
DOLJ	270	2,8	130			140				
GALATI	259	2,7	164			94				1
GIURGIU	68	0,7	18			50				
GORJ	110	1,1	54			56				
HARGHITA	116	1,2	85			31				
HUNEDOARA	190	2,0	111			78	1			
IALOMITA	82	0,9	54			28				
IASI	490	5,1	329			161				
MARAMURES	229	2,4	158			71				
MEHEDINTI	126	1,3	86			40				
MURES	223	2,3	142			80			1	
NEAMT	190	2,0	123			67				
OLT	104	1,1	57			47				
PRAHOVA	293	3,0	163			130				
SALAJ	111	1,2	59			52				
SATU MARE	160	1,7	105			54			1	
SIBIU	223	2,3	144			79				
SUCEAVA	208	2,2	127			80	1			
TELEORMAN	102	1,1	45			57				
TIMIS	353	3,7	175			178				
TULCEA	90	0,9	56			34				
VASLUI	106	1,1	73			33				
VALCEA	135	1,4	104			31				
VRANCEA	105	1,1	67			37	1			
MUN. BUCURESTI	1744	18,1	641			1101	2			
ILFOV	411	4,3	98			308	5			



Table no.8

**Number of incorporations in the trade registers by counties and business categories in the month of February 2010**

County	Total		out of which:							
			PF	companies: 4418				RA	SC	APJ
				SNC	SCS	SRL	SA			
				No.	No.	No.	No.			
0	1	2	3	4	5	6	7	8	9	
<b>Total ROMÂNIA</b>	<b>9623</b>	<b>100,0</b>	<b>5200</b>	<b>1</b>		<b>4405</b>	<b>12</b>		<b>3</b>	<b>2</b>
ALBA	153	1,6	114			39				
ARAD	230	2,4	153			76	1			
ARGES	223	2,3	109			114				
BACAU	258	2,7	157			101				
BIHOR	385	4,0	241			144				
BISTRITA-NASAUD	119	1,2	77			42				
BOTOSANI	105	1,1	78			27				
BRASOV	288	3,0	155			133				
BRAILA	112	1,2	76			36				
BUZAU	103	1,1	52			51				
CARAS-SEVERIN	88	0,9	37	1		50				
CALARASI	93	1,0	54			38				1
CLUJ	443	4,6	248			194	1			
CONSTANTA	295	3,1	129			165			1	
COVASNA	95	1,0	68			27				
DAMBOVITA	135	1,4	84			51				
DOLJ	270	2,8	130			140				
GALATI	259	2,7	164			94				1
GIURGIU	68	0,7	18			50				
GORJ	110	1,1	54			56				
HARGHITA	116	1,2	85			31				
HUNEDOARA	190	2,0	111			78	1			
IALOMITA	82	0,9	54			28				
IASI	490	5,1	329			161				
MARAMURES	229	2,4	158			71				
MEHEDINTI	126	1,3	86			40				
MURES	223	2,3	142			80			1	
NEAMT	190	2,0	123			67				
OLT	104	1,1	57			47				
PRAHOVA	293	3,0	163			130				
SALAJ	111	1,2	59			52				
SATU MARE	160	1,7	105			54			1	
SIBIU	223	2,3	144			79				
SUCEAVA	208	2,2	127			80	1			
TELEORMAN	102	1,1	45			57				
TIMIS	353	3,7	175			178				
TULCEA	90	0,9	56			34				
VASLUI	106	1,1	73			33				
VALCEA	135	1,4	104			31				
VRANCEA	105	1,1	67			37	1			
MUN. BUCURESTI	1744	18,1	641			1101	2			
ILFOV	411	4,3	98			308	5			





Table no. 10

**Number of incorporated trading companies and the value of the subscribed share capital, by counties, in the month of February 2010**

County	Total registered companies		Subscribed capital		Average subscribed capital on company
	No.	%	thousand Lei	%	thousand Lei
0	1	2	3	4	5
<b>Total ROMÂNIA</b>	<b>4418</b>	<b>100,0</b>	<b>288586,3</b>	<b>100,0</b>	<b>65,5</b>
ALBA	39	0,9	14,9	***	0,4
ARAD	77	1,7	849,4	0,3	11,0
ARGES	114	2,6	177,1	0,1	1,6
BACAU	101	2,3	314,4	0,1	3,1
BIHOR	144	3,3	167,3	0,1	1,2
BISTRITA-NASAUD	42	1,0	9,9	***	0,2
BOTOSANI	27	0,6	11,4	***	0,4
BRASOV	133	3,0	236,2	0,1	1,8
BRAILA	36	0,8	38,5	0,0	1,1
BUZAU	51	1,2	125,6	0,0	2,5
CARAS-SEVERIN	51	1,2	46,2	0,0	0,9
CALARASI	38	0,9	8,4	***	0,2
CLUJ	195	4,4	4775,4	1,7	24,7
CONSTANTA	165	3,7	205,2	0,1	1,2
COVASNA	27	0,6	30,2	0,0	1,1
DAMBOVITA	51	1,2	4005,2	1,4	78,5
DOLJ	140	3,2	174,7	0,1	1,2
GALATI	94	2,1	22,4	***	0,2
GIURGIU	50	1,1	24,0	***	0,5
GORJ	56	1,3	227,8	0,1	4,1
HARGHITA	31	0,7	37,7	0,0	1,2
HUNEDOARA	79	1,8	142,1	0,0	1,8
IALOMITA	28	0,6	7,9	***	0,3
IASI	161	3,6	102,1	0,0	0,6
MARAMURES	71	1,6	30,7	0,0	0,4
MEHEDINTI	40	0,9	8,7	***	0,2
MURES	80	1,8	4326,7	1,5	54,1
NEAMT	67	1,5	16,4	***	0,2
OLT	47	1,1	27,9	***	0,6
PRAHOVA	130	2,9	34717,3	12,0	269,1
SALAJ	52	1,2	43,6	0,0	0,8
SATU MARE	54	1,2	502,3	0,2	9,3
SIBIU	79	1,8	457,8	0,2	5,8
SUCEAVA	81	1,8	2652,7	0,9	32,7
TELEORMAN	57	1,3	14,6	***	0,3
TIMIS	178	4,0	16559,3	5,7	93,0
TULCEA	34	0,8	50,8	0,0	1,5
VASLUI	33	0,7	10,0	***	0,3
VALCEA	31	0,7	128,8	0,0	4,2
VRANCEA	38	0,9	346,0	0,1	9,1
MUN. BUCURESTI	1103	25,0	13659,0	4,7	12,4
ILFOV	313	7,1	203279,5	70,4	649,5

*Note: The average does not include filials because according to the Law no.31/1990 they are not juridical persons*

\*\*\* Less than 0,01%

Table no. 11

**Number of incorporated trading companies and the value of the subscribed share capital by legal forms, in the month of February 2010**

Company type	Total registered companies		Subscribed capital		Average subscribed capital on company
	No.	%	thousant Lei	%	thousant Lei
0	1	2	3	4	5
<b>Total ROMÂNIA</b>	<b>4418</b>	<b>100,0</b>	<b>288586,3</b>	<b>100,0</b>	<b>65,5</b>
<b>SNC</b>	1	0,0	0,2	***	
<b>SCS</b>					
<b>SA</b>	12	0,3	155358,7	53,8	14123,5
<b>SRL</b>	4405	99,7	133227,4	46,2	30,3

**Note:** The average does not include filials because according to the Law no.31/1990 they are not juridical persons

\*\*\* Less than 0,01%

Diagram no.5

