



MINISTRY OF JUSTICE

THE NATIONAL TRADE REGISTER OFFICE

București, Bd. Unirii nr. 74, Bl. J3b, tronson II+III, sector 3; Telefon: +40 21 316.08.04, 316.08.10; Fax: +40 21 316.08.03; Cod poștal: 030837
Website: www.onrc.ro; E-mail: onrc@onrc.ro; Cod identificare Fiscală: 14942091

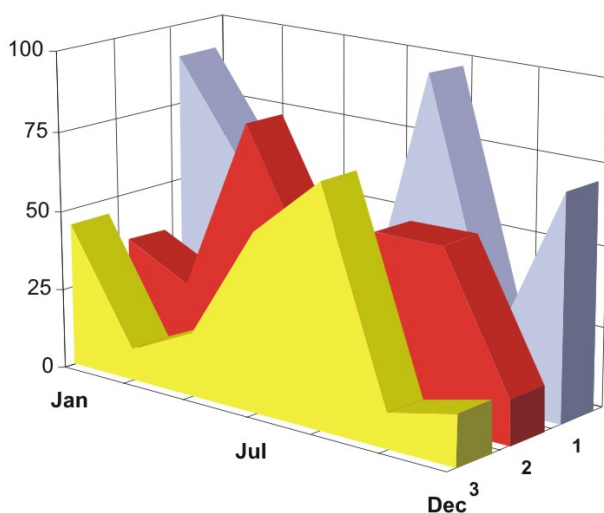
OPERATIONS IN THE CENTRAL TRADE REGISTER

STATISTIC SYNTHESIS

OF

RECORDS IN THE CENTRAL TRADE REGISTER

- 31st January 2010 - provisional data -



- ISSUE No. 218 -

**MINISTRY OF JUSTICE
THE NATIONAL TRADE REGISTER OFFICE**

- Operations such as incorporation of trading companies, submission of changes, and strike-off are carried out based on Law No.26/1990, as republished, Law No.31/1990, as republished and on the Methodological Norms no. P/608/1998.

- This work reflects the evolution of the operations with the Trade Register Office attached to Bucharest Law Court and the Trade Register Offices attached to County Law Courts.

- The data contained in the Central Trade Register refer to operations for which law sets out the obligation of being registered in the trade registers kept by the 42 trade register offices attached to law courts.

• The content of this publication shall not be reproduced, partly or entirely, in original or modified form, and shall not be stored in a recovery system and shall not be transmitted in any form or by any means without prior written authorization of the Ministry of Justice – The National Trade Register Office.

• The content of this publication shall not be used in articles, studies, books, as supporting or explanatory data only by clearly and accurately indicating the source.

CONTENTS

Page

1	Definitions	1
2.1	Data related to the period December 1990 –January 2010	3
<hr/>		
	Table no. 1 – Operations performed in the trade registers by categories of registration during December 1990 –January 2010, total by country and by counties, shares of counties in the total by country	3
	Table no. 2 – Operations performed in the trade registers by categories of registration during 1990 –January 2010, total by country and counties, share of categories of operations in the total of each county	4
	Table no. 3 – Number and structure of incorporations in the trade registers during 1990-January 2010	5
	Chart no. 1 – Structure by years of incorporations in the trade register	
	Table no. 4 – Number of incorporations in the trade registers by counties and capital sources during 1990 - January 2010	6
	Table no. 5 – Number of incorporations in the trade registers by counties and business categories during 1990 –January 2010	7
<hr/>		
2.2	Data related to January 2010	8
<hr/>		
	Table no. 6 – Operations performed in the trade registers by counties and categories of registrations in the month of January 2010	8
	Table no. 7 – Number of incorporations in the trade registers by counties and capital sources in the month of January 2010	9
	Table no. 8 – Number of incorporations in the trade registers by counties and business categories in the month of January 2010	10
	Table no. 9 –Number of incorporations in the trade registers by domains of activity and business categories in the month of January 2010	11-12
	Table no. 10 – Number of incorporated trading companies and the value of subscribed share capital, by counties, in the month of January 2010	13
	Table no. 11– Number of incorporated trading companies and the value of subscribed share capital by legal forms, in the month of January 2010	14
	Chart no. 5 – Average value of subscribed share capital by types of trading companies in the month of January 2010	14

Definitions

The Trade Register Office was established based on Law No. 26/1990, as republished and subsequently amended and supplemented, operates as an active institution since 1990 and is twofold structured:

- at national level, represented by the National Trade Register Office organized under the authority of the Ministry of Justice
- at local level, represented by the 42 Trade Register Offices attached to Law Courts, organized under the subordination of the National Trade Register Office

Categories of persons liable to registration in the trade register:

- natural persons: authorized natural persons, individual enterprises and family enterprises currently carrying on trading activities;
- legal persons represented by: Trading Companies, National Societies and Companies, National R&D Institutes, Autonomous Administrations, Co-operative Societies, Agricultural Co-operatives, Co-operative Organizations, Economic Interest Groupings, European Economic Interest Groupings, European Societies, European Co-operative Societies, branches of trading companies with legal establishment, operation and incorporation regime of trading company legal form under which they were incorporated.

• Terms used in tables and charts

➤ **Number of companies**, depending on the table, represents the number of trading companies incorporated during the reference period, the number of trading companies struck-off from the trade register. The following forms of organization are included: limited liability companies, joint-stock companies, limited partnerships by share, limited partnerships, general partnerships, and branches thereof.

➤ **Value of subscribed share capital:**

- **total, expressed in national currency:** the share capital value resulted by adding up the subscribed values (in cash and in kind) in national currency (lei)

➤ **Regions of economic development:**

North-East: Suceava, Botoșani, Neamț, Iași, Bacău, Vaslui.

South-East: Vrancea, Galați, Buzău, Brăila, Tulcea, Constanța.

South-Muntenia: Argeș, Dâmbovița, Prahova, Teleorman, Giurgiu, Călărași, Ialomița.

South-West Oltenia: Gorj, Vâlcea, Dolj, Mehedinți, Olt.

West: Arad, Caraș-Severin, Hunedoara, Timiș.

North-West: Bihor, Bistrița, Cluj, Satu Mare, Sălaj, Maramureș.

Center: Alba, Brașov, Covasna, Harghita, Mureș, Sibiu.

Bucharest-Ilfov: București, Ilfov.

NACE Code – The classification of economic activities in the national economy was approved by GO No. 656/1997, amended by Order No 601/2002 and Order no. 337/2007 of the President of the National Institute of Statistics, and complies with the international classification used in statistic reports and official documents. The activities are ranked by the harmonization principle, by sections, divisions, groups and classes.

Abbreviations

- **PF** - Natural Person; the following forms of organization are included in this category: natural persons and family associations registered until 25.04.2008, authorized natural persons, individual enterprises and family enterprises.
- **SNC** - General Partnership
- **SCS** - Limited Partnership
- **SCA** - Limited Partnership by Share
- **SA** - Joint-Stock Company
- **SRL** - Limited Liability Company
- **RA** - Autonomous Administration
- **APJ** - Other legal persons having the obligation to register in the trade register: National R&D Institutes, Economic Interest Groupings, European Economic Interest Groupings, European Societies, European Co-operative Societies, Agricultural Co-operatives, Co-operative Organizations.

Sources of Information:

The integrated IT system of the trade register is designed by The National Trade Register Office in compliance with the provisions of the related legislation in force. The source of information consists of the trade registers organized in computerized system, kept by the trade register offices attached to law courts.

Table no. 1

**Operations performed in the trade registers by categories of registration during
December 1990 – January 2010, total by country and by counties, share of
counties in the total by country**

Counties	Total of registered operations		out of which :					
			Registered companies		Changes in statutory documents		Strike off companies	
	No.	%	No.	%	No.	%	No.	%
0	1	2	3	4	7	8	11	12
Total ROMÂNIA	12822891	100,0	1970897	100,0	10221862	100,0	630132	100,0
ALBA	192065	1,5	31625	1,6	152668	1,5	7772	1,2
ARAD	297213	2,3	48089	2,4	236042	2,3	13082	2,1
ARGES	310413	2,4	50336	2,6	247901	2,4	12176	1,9
BACAU	291926	2,3	49140	2,5	227998	2,2	14788	2,3
BIHOR	388853	3,0	60743	3,1	309810	3,0	18300	2,9
BISTRITA-NASAUD	153123	1,2	24389	1,2	120783	1,2	7951	1,3
BOTOSANI	118005	0,9	24057	1,2	86921	0,9	7027	1,1
BRASOV	506801	4,0	61595	3,1	429586	4,2	15620	2,5
BRAILA	199810	1,6	27370	1,4	166611	1,6	5829	0,9
BUZAU	222477	1,7	35667	1,8	173826	1,7	12984	2,1
CARAS-SEVERIN	151701	1,2	23921	1,2	117780	1,2	10000	1,6
CALARASI	115266	0,9	19848	1,0	89559	0,9	5859	0,9
CLUJ	572624	4,5	91023	4,6	460684	4,5	20917	3,3
CONSTANTA	542809	4,2	81741	4,1	430932	4,2	30136	4,8
COVASNA	111885	0,9	16876	0,9	89376	0,9	5633	0,9
DAMBOVITA	185330	1,4	36649	1,9	132862	1,3	15819	2,5
DOLJ	341110	2,7	51746	2,6	273422	2,7	15942	2,5
GALATI	330455	2,6	46651	2,4	266344	2,6	17460	2,8
GIURGIU	100832	0,8	16432	0,8	78496	0,8	5904	0,9
GORJ	201175	1,6	23149	1,2	170328	1,7	7698	1,2
HARGHITA	189342	1,5	30644	1,6	151576	1,5	7122	1,1
HUNEDOARA	259865	2,0	39950	2,0	204582	2,0	15333	2,4
IALOMITA	118919	0,9	18378	0,9	93656	0,9	6885	1,1
IASI	423315	3,3	64684	3,3	341335	3,3	17296	2,7
MARAMURES	261823	2,0	49989	2,5	198863	1,9	12971	2,1
MEHEDINTI	133659	1,0	21947	1,1	102921	1,0	8791	1,4
MURES	359372	2,8	49365	2,5	293550	2,9	16457	2,6
NEAMT	278672	2,2	42247	2,1	219629	2,1	16796	2,7
OLT	156117	1,2	27298	1,4	118156	1,2	10663	1,7
PRAHOVA	434316	3,4	65857	3,3	348344	3,4	20115	3,2
SALAJ	111496	0,9	19553	1,0	85432	0,8	6511	1,0
SATU MARE	199384	1,6	33485	1,7	153896	1,5	12003	1,9
SIBIU	281331	2,2	38805	2,0	231251	2,3	11275	1,8
SUCEAVA	305263	2,4	48888	2,5	236771	2,3	19604	3,1
TELEORMAN	136625	1,1	22591	1,1	108478	1,1	5556	0,9
TIMIS	421682	3,3	70063	3,6	330976	3,2	20643	3,3
TULCEA	152409	1,2	20031	1,0	126009	1,2	6369	1,0
VASLUI	158804	1,2	24654	1,3	124426	1,2	9724	1,5
VALCEA	194235	1,5	31823	1,6	151167	1,5	11245	1,8
VRANCEA	156525	1,2	24080	1,2	126443	1,2	6002	1,0
MUN. BUCURESTI	2552323	19,9	368577	18,7	2054134	20,1	129612	20,6
ILFOV	203541	1,6	36941	1,9	158338	1,5	8262	1,3

Table no. 2

Operations performed in the trade registers during December 1990 – January 2010, total by country and counties, share of categories of operations in the total of each county

Counties	Total of registered operations		out of which :					
			Registered companies		Changes in statutory documents		Strike off companies	
	No.	%	No.	%	No.	%	No.	%
0	1	2	3	4	7	8	11	12
Total ROMÂNIA	12822891	100,0	1970897	15,4	10221862	79,7	630132	4,9
ALBA	192065	100,0	31625	16,5	152668	79,5	7772	4,0
ARAD	297213	100,0	48089	16,2	236042	79,4	13082	4,4
ARGES	310413	100,0	50336	16,2	247901	79,9	12176	3,9
BACAU	291926	100,0	49140	16,8	227998	78,1	14788	5,1
BIHOR	388853	100,0	60743	15,6	309810	79,7	18300	4,7
BISTRITA-NASAUD	153123	100,0	24389	15,9	120783	78,9	7951	5,2
BOTOSANI	118005	100,0	24057	20,4	86921	73,7	7027	6,0
BRASOV	506801	100,0	61595	12,2	429586	84,8	15620	3,1
BRAILA	199810	100,0	27370	13,7	166611	83,4	5829	2,9
BUZAU	222477	100,0	35667	16,0	173826	78,1	12984	5,8
CARAS-SEVERIN	151701	100,0	23921	15,8	117780	77,6	10000	6,6
CALARASI	115266	100,0	19848	17,2	89559	77,7	5859	5,1
CLUJ	572624	100,0	91023	15,9	460684	80,5	20917	3,7
CONSTANTA	542809	100,0	81741	15,1	430932	79,4	30136	5,6
COVASNA	111885	100,0	16876	15,1	89376	79,9	5633	5,0
DAMBOVITA	185330	100,0	36649	19,8	132862	71,7	15819	8,5
DOLJ	341110	100,0	51746	15,2	273422	80,2	15942	4,7
GALATI	330455	100,0	46651	14,1	266344	80,6	17460	5,3
GIURGIU	100832	100,0	16432	16,3	78496	77,8	5904	5,9
GORJ	201175	100,0	23149	11,5	170328	84,7	7698	3,8
HARGHITA	189342	100,0	30644	16,2	151576	80,1	7122	3,8
HUNEDOARA	259865	100,0	39950	15,4	204582	78,7	15333	5,9
IALOMITA	118919	100,0	18378	15,5	93656	78,8	6885	5,8
IASI	423315	100,0	64684	15,3	341335	80,6	17296	4,1
MARAMURES	261823	100,0	49989	19,1	198863	76,0	12971	5,0
MEHEDINTI	133659	100,0	21947	16,4	102921	77,0	8791	6,6
MURES	359372	100,0	49365	13,7	293550	81,7	16457	4,6
NEAMT	278672	100,0	42247	15,2	219629	78,8	16796	6,0
OLT	156117	100,0	27298	17,5	118156	75,7	10663	6,8
PRAHOVA	434316	100,0	65857	15,2	348344	80,2	20115	4,6
SALAJ	111496	100,0	19553	17,5	85432	76,6	6511	5,8
SATU MARE	199384	100,0	33485	16,8	153896	77,2	12003	6,0
SIBIU	281331	100,0	38805	13,8	231251	82,2	11275	4,0
SUCEAVA	305263	100,0	48888	16,0	236771	77,6	19604	6,4
TELEORMAN	136625	100,0	22591	16,5	108478	79,4	5556	4,1
TIMIS	421682	100,0	70063	16,6	330976	78,5	20643	4,9
TULCEA	152409	100,0	20031	13,1	126009	82,7	6369	4,2
VASLUI	158804	100,0	24654	15,5	124426	78,4	9724	6,1
VALCEA	194235	100,0	31823	16,4	151167	77,8	11245	5,8
VRANCEA	156525	100,0	24080	15,4	126443	80,8	6002	3,8
MUN. BUCURESTI	2552323	100,0	368577	14,4	2054134	80,5	129612	5,1
ILFOV	203541	100,0	36941	18,1	158338	77,8	8262	4,1

Table no.3

Number and structure of incorporations in the trade registers during December 1990 - January 2010

Period (year, month)	Registered companies		Percentage	
	No.	%	%	
0	1	2	3	
Total, 31 January 2010, out of which	1970897	100,00		
Year 1990	81	0,00		
Year 1991	95840	4,86		
Year 1992	137456	6,97		
Year 1993	117078	5,94		
Year 1994	137445	6,97		
Year 1995	65479	3,32		
Year 1996	62089	3,15		
Year 1997	55663	2,82		
Year 1998	63878	3,24		
Year 1999	57197	2,90		
Year 2000	57268	2,91		
Year 2001	61265	3,11		
Year 2002	84780	4,30		
Year 2003	123582	6,27		
Year 2004	144284	7,32		
Year 2005	159464	8,09		
Year 2006	135371	6,87		
Year 2007	144728	7,34		
Year 2008	144173	7,32		
Year 2009	116037	5,89		
Year 2010 (I - XII) out of which :	7739			
January	7739			100,0

Note: Column 2 reveals the annual structure of incorporations; column 3 reveals the structure by months during the current year.

Diagram no.1

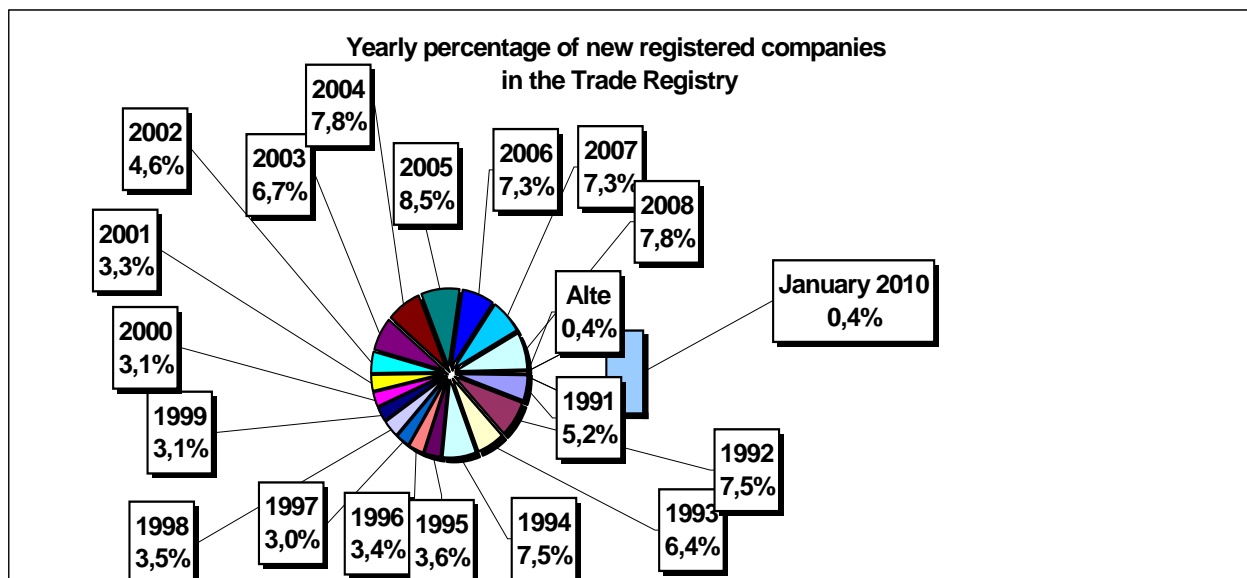


Table no. 4

**Number of incorporations in the trade registers by counties and capital sources during
December 1990 - January 2010**

Counties	Total		out of which:						Ranking by: *	
			Private capital				State majority capital			Mixed capital (state+private)
			out of which:				out of which:			
			PF	Companies	SC	APJ	RA	Companies		Companies
No.	%	No.	No.	No.	No.	No.	No.	No.		
0	1	2	3	4	5	6	6	7	8	9
Total ROMÂNIA	1970897	100,0	545412	1405424	2037	5604	1388	2398	8641	X
ALBA	31625	1,6	11568	19620	36	146	38	47	170	25
ARAD	48089	2,4	18477	28976	60	169	30	42	336	15
ARGES	50336	2,6	16501	33402	48	173	29	30	153	10
BACAU	49140	2,5	17064	31464	150	160	35	42	226	13
BIHOR	60743	3,1	16455	43663	63	151	40	62	309	8
BISTRITA-NASAUD	24389	1,2	9005	15073	46	99	28	29	109	30
BOTOSANI	24057	1,2	11412	12155	40	135	21	175	119	32
BRASOV	61587	3,1	14427	46672	58	122	49	87	172	7
BRAILA	27378	1,4	7956	19039	42	99	30	45	167	27
BUZAU	35667	1,8	10989	24279	46	152	28	42	131	22
CARAS-SEVERIN	23921	1,2	8490	15041	42	107	38	65	138	33
CALARASI	19848	1,0	6267	13277	22	87	18	81	96	38
CLUJ	91023	4,6	24600	65845	62	158	52	42	264	2
CONSTANTA	81741	4,1	16941	63859	87	209	51	51	543	3
COVASNA	16876	0,9	6392	10209	41	69	24	32	109	41
DAMBOVITA	36649	1,9	16783	19436	32	138	30	75	155	21
DOLJ	51746	2,6	11863	39376	39	167	40	58	203	9
GALATI	46651	2,4	10894	35361	35	137	30	51	143	16
GIURGIU	16432	0,8	4054	12036	15	85	23	109	110	42
GORJ	23149	1,2	6046	16659	26	184	51	83	100	34
HARGHITA	30644	1,6	13239	16952	64	90	24	43	232	26
HUNEDOARA	39950	2,0	11090	28321	33	83	42	95	286	18
IALOMITA	18378	0,9	7137	10979	27	83	15	46	91	40
IASI	64684	3,3	20340	43644	87	166	34	71	344	6
MARAMURES	49989	2,5	20492	29127	43	126	38	41	123	11
MEHEDINTI	21947	1,1	7663	14034	19	87	19	27	98	36
MURES	49365	2,5	19020	29887	68	158	30	34	168	12
NEAMT	42247	2,1	15875	25915	66	165	30	30	166	17
OLT	27298	1,4	10666	16227	27	165	26	64	123	28
PRAHOVA	65857	3,3	21391	43819	67	184	51	73	272	5
SALAJ	19553	1,0	7923	11368	41	110	19	28	64	39
SATU MARE	33485	1,7	11600	21553	41	96	20	42	134	23
SIBIU	38805	2,0	10844	27500	37	120	34	109	161	19
SUCEAVA	48888	2,5	23232	25060	73	206	31	65	221	14
TELEORMAN	22591	1,1	8194	13957	33	158	21	46	182	35
TIMIS	70063	3,6	12768	56614	69	154	38	69	351	4
TULCEA	20031	1,0	7359	12296	36	67	19	42	212	37
VASLUI	24654	1,3	12041	12288	22	110	16	41	136	29
VALCEA	31823	1,6	12904	18489	64	170	42	39	115	24
VRANCEA	24080	1,2	7722	16051	35	114	17	27	114	31
MUN. BUCURESTI	368577	18,7	32751	334268	64	150	116	105	1124	1
ILFOV	36941	1,9	4977	31633	31	95	21	13	171	20

*) The total number of incorporations (col 1)

Table no. 5

**Number of incorporations in the trade registers by counties and business categories
during December 1990 – January 2010**

County	Total		out of which:							
			PF	companies: 1416463				RA	SC	APJ
				SNC	SCS	SRL	SA			
				No.	No.	No.	No.			
0	1	2	3	4	5	6	7	8	9	10
Total ROMÂNIA	1970897	100,0	545412	32677	1607	1348474	33698	1388	2037	5604
ALBA	31625	1,6	11568	890	11	18362	574	38	36	146
ARAD	48089	2,4	18477	54	13	28586	700	30	60	169
ARGES	50336	2,6	16501	107	15	32623	840	29	48	173
BACAU	49140	2,5	17064	1299	4	29681	747	35	150	160
BIHOR	60743	3,1	16455	127	47	42931	929	40	63	151
BISTRITA-NASAUD	24389	1,2	9005	146	22	14621	422	28	46	99
BOTOSANI	24057	1,2	11412	468	1	11520	460	21	40	135
BRASOV	61595	3,1	14427	239	20	45789	891	49	58	122
BRAILA	27370	1,4	7956	376	12	18318	537	30	42	99
BUZAU	35667	1,8	10989	3747	46	20066	593	28	46	152
CARAS-SEVERIN	23921	1,2	8490	117	9	14643	475	38	42	107
CALARASI	19848	1,0	6267	609	3	12481	361	18	22	87
CLUJ	91023	4,6	24600	2112	21	62675	1343	52	62	158
CONSTANTA	81741	4,1	16941	311	23	62594	1525	51	87	209
COVASNA	16876	0,9	6392	148	4	9892	306	24	41	69
DAMBOVITA	36649	1,9	16783	60	8	19097	501	30	32	138
DOLJ	51746	2,6	11863	1560	8	37157	912	40	39	167
GALATI	46651	2,4	10894	1574	6	33110	865	30	35	137
GIURGIU	16432	0,8	4054	35	8	11882	330	23	15	85
GORJ	23149	1,2	6046	29	1	16306	506	51	26	184
HARGHITA	30644	1,6	13239	62	7	16658	500	24	64	90
HUNEDOARA	39950	2,0	11090	1166	98	26743	695	42	33	83
IALOMITA	18378	0,9	7137	269	12	10480	355	15	27	83
IASI	64684	3,3	20340	508	111	42405	1033	34	87	166
MARAMURES	49989	2,5	20492	1927	23	26733	607	38	43	126
MEHEDINTI	21947	1,1	7663	427	3	13387	342	19	19	87
MURES	49365	2,5	19020	37	34	29334	684	30	68	158
NEAMT	42247	2,1	15875	3293	30	22102	686	30	66	165
OLT	27298	1,4	10666	1611	1	14299	503	26	27	165
PRAHOVA	65857	3,3	21391	3122	15	40094	933	51	67	184
SALAJ	19553	1,0	7923	600	4	10556	300	19	41	110
SATU MARE	33485	1,7	11600	283	9	20955	481	20	41	96
SIBIU	38805	2,0	10844	778	49	26263	680	34	37	120
SUCEAVA	48888	2,5	23232	438	8	24302	598	31	73	206
TELEORMAN	22591	1,1	8194	272	399	13080	434	21	33	158
TIMIS	70063	3,6	12768	616	33	55097	1288	38	69	154
TULCEA	20031	1,0	7359	1363	114	10589	484	19	36	67
VASLUI	24654	1,3	12041	90	13	11938	424	16	22	110
VALCEA	31823	1,6	12904	364	6	17767	506	42	64	170
VRANCEA	24080	1,2	7722	356	10	15361	465	17	35	114
MUN. BUCURESTI	368577	18,7	32751	1038	313	326925	7220	116	64	150
ILFOV	36941	1,9	4977	49	33	31072	663	21	31	95

Table no. 6

Operations performed in the trade registers by counties and categories of registration in the month of January 2010

County	Total of operations carried on		out of which:					
			New incorporations		Changes in statutory documents		Strike off companies	
	No.	%	No.	%	No.	%	No.	%
0	1	2	3	4	5	6	9	10
Total ROMÂNIA	84390	100,0	7739	9,2	72262	85,6	4389	5,2
ALBA	1076	100,0	141	13,1	850	79,0	85	7,9
ARAD	1893	100,0	162	8,6	1647	87,0	84	4,4
ARGES	1659	100,0	197	11,9	1358	81,9	104	6,3
BACAU	1895	100,0	204	10,8	1584	83,6	107	5,6
BIHOR	2427	100,0	248	10,2	2030	83,6	149	6,1
BISTRITA-NASAUD	820	100,0	73	8,9	712	86,8	35	4,3
BOTOSANI	664	100,0	91	13,7	527	79,4	46	6,9
BRASOV	2375	100,0	226	9,5	2050	86,3	99	4,2
BRAILA	1023	100,0	133	13,0	794	77,6	96	9,4
BUZAU	1656	100,0	134	8,1	1338	80,8	184	11,1
CARAS-SEVERIN	588	100,0	63	10,7	497	84,5	28	4,8
CALARASI	611	100,0	64	10,5	473	77,4	74	12,1
CLUJ	3439	100,0	289	8,4	2914	84,7	236	6,9
CONSTANTA	3890	100,0	261	6,7	3513	90,3	116	3,0
COVASNA	585	100,0	64	10,9	468	80,0	53	9,1
DAMBOVITA	1020	100,0	133	13,0	806	79,0	81	7,9
DOLJ	1946	100,0	240	12,3	1574	80,9	132	6,8
GALATI	1932	100,0	178	9,2	1668	86,3	86	4,5
GIURGIU	526	100,0	73	13,9	433	82,3	20	3,8
GORJ	1513	100,0	97	6,4	1103	72,9	313	20,7
HARGHITA	830	100,0	92	11,1	678	81,7	60	7,2
HUNEDOARA	1597	100,0	155	9,7	1370	85,8	72	4,5
IALOMITA	584	100,0	68	11,6	471	80,7	45	7,7
IASI	2810	100,0	343	12,2	2282	81,2	185	6,6
MARAMURES	1350	100,0	186	13,8	1097	81,3	67	5,0
MEHEDINTI	604	100,0	72	11,9	495	82,0	37	6,1
MURES	1664	100,0	169	10,2	1374	82,6	121	7,3
NEAMT	1333	100,0	141	10,6	1137	85,3	55	4,1
OLT	681	100,0	84	12,3	560	82,2	37	5,4
PRAHOVA	2870	100,0	288	10,0	2430	84,7	152	5,3
SALAJ	885	100,0	67	7,6	754	85,2	64	7,2
SATU MARE	1203	100,0	150	12,5	998	83,0	55	4,6
SIBIU	1169	100,0	156	13,3	908	77,7	105	9,0
SUCEAVA	1886	100,0	168	8,9	1602	84,9	116	6,2
TELEORMAN	575	100,0	90	15,7	436	75,8	49	8,5
TIMIS	2931	100,0	257	8,8	2514	85,8	160	5,5
TULCEA	720	100,0	61	8,5	621	86,3	38	5,3
VASLUI	1058	100,0	65	6,1	944	89,2	49	4,6
VALCEA	1114	100,0	121	10,9	906	81,3	87	7,8
VRANCEA	1014	100,0	68	6,7	896	88,4	50	4,9
MUN. BUCURESTI	24134	100,0	1493	6,2	22025	91,3	616	2,6
ILFOV	1840	100,0	374	20,3	1425	77,4	41	2,2

*) by effect of implementation of Law no. 314/2001, art.1 and art. 6

Table no.7

Number of incorporations in the trade registers by counties and capital sources in the month of January 2010

County	Total		out of which:						Ranking by: *	
			Private capital			State majority capital		Mixed capital (state+private)		
			out of which:			out of which:		Companies		
			PF	Companies	SC	APJ	RA	Companies		Companies
No.	%	No.	No.	No.		No.	No.	No.		
0	1	2	3	4	5		6	7	8	9
Total ROMÂNIA	7739	100,0	3630	4099		2		4	4	X
ALBA	141	1,8	86	55						21
ARAD	162	2,1	83	79						17
ARGES	197	2,5	86	111						12
BACAU	204	2,6	108	96						11
BIHOR	248	3,2	148	100						8
BISTRITA-NASAUD	73	0,9	36	37						32
BOTOSANI	91	1,2	59	32						29
BRASOV	226	2,9	112	114						10
BRAILA	133	1,7	84	49						24
BUZAU	134	1,7	66	68						23
CARAS-SEVERIN	63	0,8	25	37		1				41
CALARASI	64	0,8	27	33				4		39
CLUJ	289	3,7	155	134						4
CONSTANTA	261	3,4	85	176						6
COVASNA	64	0,8	40	24						40
DAMBOVITA	133	1,7	79	54						25
DOLJ	240	3,1	105	135						9
GALATI	178	2,3	92	86						14
GIURGIU	73	0,9	24	49						33
GORJ	97	1,3	50	47						27
HARGHITA	92	1,2	61	31						28
HUNEDOARA	155	2,0	67	88						19
IALOMITA	68	0,9	37	31						35
IASI	343	4,4	214	129						3
MARAMURES	186	2,4	121	65						13
MEHEDINTI	72	0,9	32	40						34
MURES	169	2,2	114	55						15
NEAMT	141	1,8	81	60						22
OLT	84	1,1	32	52						31
PRAHOVA	288	3,7	138	149		1				5
SALAJ	67	0,9	41	26						37
SATU MARE	150	1,9	79	71						20
SIBIU	156	2,0	92	63					1	18
SUCEAVA	168	2,2	97	71						16
TELEORMAN	90	1,2	50	40						30
TIMIS	257	3,3	110	147						7
TULCEA	61	0,8	34	27						42
VASLUI	65	0,8	35	30						38
VALCEA	121	1,6	74	47						26
VRANCEA	68	0,9	29	39						36
MUN. BUCURESTI	1493	19,3	480	1010					3	1
ILFOV	374	4,8	62	312						2

*) The total number of incorporations (col 1)

*** Less than 0,01%

Table no.8

Number of incorporations in the trade registers by counties and business categories in the month of January 2010

County	Total		out of which:						APJ	
			PF	companies: 4107				RA		SC
	SNC	SCS		SRL	SA					
	No.	%	No.	No.	No.	No.	No.	No.		
0	1	2	3	4	5	6	7	8	9	
Total ROMÂNIA	7739	100,0	3630			4095	12			2
ALBA	141	1,8	86			55				
ARAD	162	2,1	83			79				
ARGES	197	2,5	86			111				
BACAU	204	2,6	108			96				
BIHOR	248	3,2	148			100				
BISTRITA-NASAUD	73	0,9	36			37				
BOTOSANI	91	1,2	59			32				
BRASOV	226	2,9	112			114				
BRAILA	133	1,7	84			49				
BUZAU	134	1,7	66			68				
CARAS-SEVERIN	63	0,8	25			37				1
CALARASI	64	0,8	27			37				
CLUJ	289	3,7	155			134				
CONSTANTA	261	3,4	85			175	1			
COVASNA	64	0,8	40			24				
DAMBOVITA	133	1,7	79			54				
DOLJ	240	3,1	105			135				
GALATI	178	2,3	92			86				
GIURGIU	73	0,9	24			49				
GORJ	97	1,3	50			47				
HARGHITA	92	1,2	61			30	1			
HUNEDOARA	155	2,0	67			88				
IALOMITA	68	0,9	37			31				
IASI	343	4,4	214			129				
MARAMURES	186	2,4	121			64	1			
MEHEDINTI	72	0,9	32			40				
MURES	169	2,2	114			55				
NEAMT	141	1,8	81			60				
OLT	84	1,1	32			52				
PRAHOVA	288	3,7	138			149				1
SALAJ	67	0,9	41			26				
SATU MARE	150	1,9	79			71				
SIBIU	156	2,0	92			64				
SUCEAVA	168	2,2	97			71				
TELEORMAN	90	1,2	50			38	2			
TIMIS	257	3,3	110			147				
TULCEA	61	0,8	34			27				
VASLUI	65	0,8	35			30				
VALCEA	121	1,6	74			47				
VRANCEA	68	0,9	29			39				
MUN. BUCURESTI	1493	19,3	480			1007	6			
ILFOV	374	4,8	62			311	1			

Table no. 9

Number of incorporations in the trade registers by domains of activity and business categories in the month of January 2010

CAEN segment	Field of activity	Total		out of which:								
				PF	companies: 4107				RA	SC	APJ	
		SNC	SCS		SRL	SA						
		No.	%	No.	No.	No.	No.	No.	No.	No.		
0	1	2	3	4	5	6	7	8	9	10	11	
	Total ROMÂNIA	7739	100,0	3630			4095	12				2
1	Agriculture, hunting and related service activities	204	2,6	96			106					2
2	Forestry and logging	46	0,6	9			37					2
3	Fishing and aquaculture	73	0,9	68			5					
5	Mining of hard and brown coal											
6	Extraction of crude petroleum and natural gas											
7	Mining of metal ores											
8	Other mining and quarrying	12	0,2				11	1				
9	Mining support service activities	3	0,0				3					
10	Manufacture of food products	93	1,2	21			72					
11	Manufacture of beverages	13	0,2	10			3					
12	Manufacture of tobacco products											
13	Manufacture of textiles	5	0,1	1			4					
14	Manufacture of wearing apparel	46	0,6	22			24					
15	Tanning and dressing of leather; manufacture of luggage, handbags, saddlery, harness and footwear; dressing and dyeing of fur	12	0,2	5			7					
16	Manufacture of wood and of products of wood and cork, except furniture; manufacture of articles of straw and plaiting materials	53	0,7	24			29					
17	Manufacture of paper and paper products	5	0,1				5					
18	Printing and reproduction of recorded media	18	0,2	3			15					
19	Manufacture of coke and refined petroleum products	1	0,0				1					
20	Manufacture of chemicals and chemical products	5	0,1				5					
21	Manufacture of basic pharmaceutical products and pharmaceutical preparations	1	0,0				1					
22	Manufacture of rubber and plastic products	21	0,3	6			15					
23	Manufacture of other non-metallic mineral products	23	0,3	11			12					
24	Manufacture of basic metals											
25	Manufacture of fabricated metal products, except machinery and equipment	73	0,9	45			28					
26	Manufacture of computer, electronic and optical products	1	0,0				1					
27	Manufacture of electrical equipment	4	0,1				4					
28	Manufacture of machinery and equipment n.e.c.	8	0,1	1			7					
29	Manufacture of motor vehicles, trailers and semi-trailers	8	0,1				8					
30	Manufacture of other transport equipment	7	0,1				7					
31	Manufacture of furniture	27	0,3	15			12					
32	Other manufacturing	38	0,5	26			12					
33	Repair and installation of machinery and equipment	18	0,2	10			8					
35	Electricity, gas, steam and air conditioning supply	33	0,4	1			31	1				
36	Water collection, treatment and supply	1	0,0				1					
37	Sewerage	6	0,1	1			5					
38	Waste collection, treatment and disposal activities; materials recovery	28	0,4	1			27					
39	Remediation activities and other waste management services											
41	Construction of buildings	777	10,0	52			723	2				
42	Civil engineering	53	0,7	2			51					
43	Specialised construction activities	526	6,8	122			403	1				
45	Wholesale and retail trade and repair of motor vehicles and motorcycles	270	3,5	39			231					
46	Wholesale trade, except of motor vehicles and motorcycles	1057	13,7	207			850					
47	Retail trade, except of motor vehicles and motorcycles	1759	22,7	590			1165	3		1		
49	Land transport and transport via pipelines	551	7,1	198			353					
50	Water transport	5	0,1	1			4					

Table no. 10

Number of incorporated trading companies and the value of the subscribed share capital, by counties, in the month of January 2010

County	Total registered companies		Subscribed capital		Average subscribed capital on company
	No.	%	thousand Lei	%	thousand Lei
0	1	2	3	4	5
Total ROMÂNIA	4107	100,0	500695,2	100,0	122,2
ALBA	55	1,3	21,0	***	0,4
ARAD	79	1,9	307,0	0,1	3,9
ARGES	111	2,7	171,2	0,0	1,5
BACAU	96	2,3	2663,4	0,5	28,0
BIHOR	100	2,4	112,4	0,0	1,1
BISTRITA-NASAUD	37	0,9	9,0	***	0,2
BOTOSANI	32	0,8	26,0	***	0,8
BRASOV	114	2,8	223,5	0,0	2,0
BRAILA	49	1,2	106,2	0,0	2,2
BUZAU	68	1,7	47,4	***	0,7
CARAS-SEVERIN	37	0,9	20,3	***	0,5
CALARASI	37	0,9	208,0	0,0	5,6
CLUJ	134	3,3	105,5	0,0	0,8
CONSTANTA	176	4,3	1833,5	0,4	10,4
COVASNA	24	0,6	229,7	0,0	9,6
DAMBOVITA	54	1,3	24,9	***	0,5
DOLJ	135	3,3	74,6	0,0	0,6
GALATI	86	2,1	23,6	***	0,3
GIURGIU	49	1,2	974,6	0,2	19,9
GORJ	47	1,1	18,8	***	0,4
HARGHITA	31	0,8	111,0	0,0	3,6
HUNEDOARA	88	2,1	1264,9	0,3	14,4
IALOMITA	31	0,8	38,8	***	1,3
IASI	129	3,1	976,7	0,2	7,6
MARAMURES	65	1,6	28,1	***	0,4
MEHEDINTI	40	1,0	8,9	***	0,2
MURES	55	1,3	26,7	***	0,5
NEAMT	60	1,5	32,3	***	0,5
OLT	52	1,3	29,2	***	0,6
PRAHOVA	149	3,6	140,8	0,0	0,9
SALAJ	26	0,6	9,0	***	0,3
SATU MARE	71	1,7	77,0	0,0	1,1
SIBIU	64	1,6	64,9	0,0	1,0
SUCEAVA	71	1,7	39762,5	7,9	560,0
TELEORMAN	40	1,0	293,1	0,1	7,3
TIMIS	147	3,6	2659,2	0,5	18,1
TULCEA	27	0,7	111,0	0,0	4,1
VASLUI	30	0,7	19,3	***	0,6
VALCEA	47	1,1	26,5	***	0,6
VRANCEA	39	0,9	18,8	***	0,5
MUN. BUCURESTI	1013	24,7	419589,2	83,8	416,3
ILFOV	312	7,6	28206,7	5,6	90,7

Note: The average does not include filials because according to the Law no.31/1990 they are not juridical persons

*** Less than 0,01%

Table no. 11

Number of incorporated trading companies and the value of the subscribed share capital by legal forms, in the month of January 2010

Company type	Total registered companies		Subscribed capital		Average subscribed capital on company
	No.	%	thousant Lei	%	thousant Lei
0	1	2	3	4	5
Total ROMÂNIA	4107	100,0	500695,2	100,0	122,2
SNC					
SCS					
SA	12	0,3	406396,0	81,2	45155,1
SRL	4095	99,7	94299,2	18,8	23,1

Note: The average does not include filials because according to the Law no.31/1990 they are not juridical persons

*** Less than 0,01%

Diagram no.5

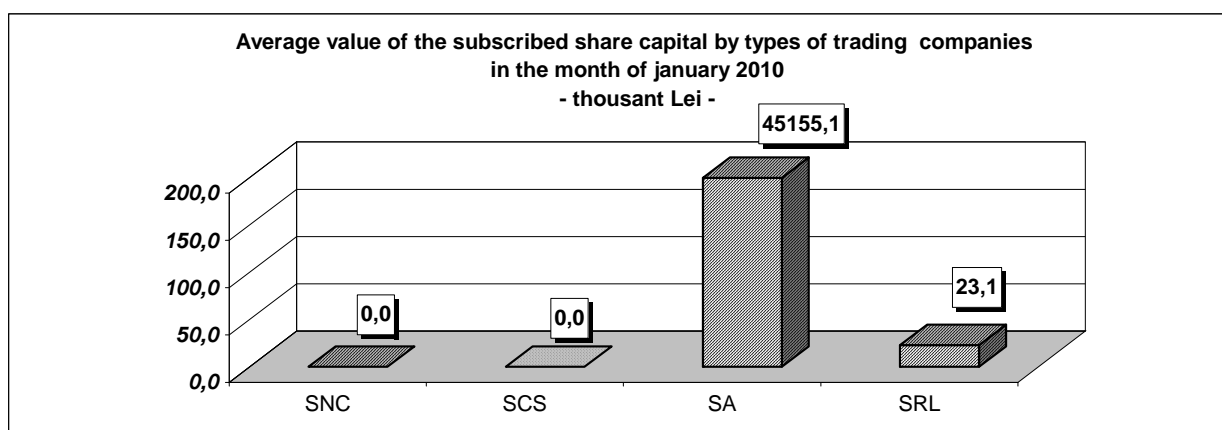


Table no. 10

Number of incorporated trading companies and the value of the subscribed share capital, by counties, in the month of January 2010

County	Total registered companies		Subscribed capital		Average subscribed capital on company
	No.	%	thousand Lei	%	thousand Lei
0	1	2	3	4	5
Total ROMÂNIA	4107	100,0	500695,2	100,0	122,2
ALBA	55	1,3	21,0	***	0,4
ARAD	79	1,9	307,0	0,1	3,9
ARGES	111	2,7	171,2	0,0	1,5
BACAU	96	2,3	2663,4	0,5	28,0
BIHOR	100	2,4	112,4	0,0	1,1
BISTRITA-NASAUD	37	0,9	9,0	***	0,2
BOTOSANI	32	0,8	26,0	***	0,8
BRASOV	114	2,8	223,5	0,0	2,0
BRAILA	49	1,2	106,2	0,0	2,2
BUZAU	68	1,7	47,4	***	0,7
CARAS-SEVERIN	37	0,9	20,3	***	0,5
CALARASI	37	0,9	208,0	0,0	5,6
CLUJ	134	3,3	105,5	0,0	0,8
CONSTANTA	176	4,3	1833,5	0,4	10,4
COVASNA	24	0,6	229,7	0,0	9,6
DAMBOVITA	54	1,3	24,9	***	0,5
DOLJ	135	3,3	74,6	0,0	0,6
GALATI	86	2,1	23,6	***	0,3
GIURGIU	49	1,2	974,6	0,2	19,9
GORJ	47	1,1	18,8	***	0,4
HARGHITA	31	0,8	111,0	0,0	3,6
HUNEDOARA	88	2,1	1264,9	0,3	14,4
IALOMITA	31	0,8	38,8	***	1,3
IASI	129	3,1	976,7	0,2	7,6
MARAMURES	65	1,6	28,1	***	0,4
MEHEDINTI	40	1,0	8,9	***	0,2
MURES	55	1,3	26,7	***	0,5
NEAMT	60	1,5	32,3	***	0,5
OLT	52	1,3	29,2	***	0,6
PRAHOVA	149	3,6	140,8	0,0	0,9
SALAJ	26	0,6	9,0	***	0,3
SATU MARE	71	1,7	77,0	0,0	1,1
SIBIU	64	1,6	64,9	0,0	1,0
SUCEAVA	71	1,7	39762,5	7,9	560,0
TELEORMAN	40	1,0	293,1	0,1	7,3
TIMIS	147	3,6	2659,2	0,5	18,1
TULCEA	27	0,7	111,0	0,0	4,1
VASLUI	30	0,7	19,3	***	0,6
VALCEA	47	1,1	26,5	***	0,6
VRANCEA	39	0,9	18,8	***	0,5
MUN. BUCURESTI	1013	24,7	419589,2	83,8	416,3
ILFOV	312	7,6	28206,7	5,6	90,7

Note: The average does not include filials because according to the Law no.31/1990 they are not juridical persons

*** Less than 0,01%

Table no. 11

Number of incorporated trading companies and the value of the subscribed share capital by legal forms, in the month of January 2010

Company type	Total registered companies		Subscribed capital		Average subscribed capital on company
	No.	%	thousand Lei	%	thousand Lei
0	1	2	3	4	5
Total ROMÂNIA	4107	100,0	500695,2	100,0	122,2
SNC					
SCS					
SA	12	0,3	406396,0	81,2	45155,1
SRL	4095	99,7	94299,2	18,8	23,1

Note: The average does not include filials because according to the Law no.31/1990 they are not juridical persons

*** Less than 0,01%

Diagram no.5

