



MINISTRY OF JUSTICE

THE NATIONAL TRADE REGISTER OFFICE

București, Bd. Unirii nr. 74, Bl. J3b, tronson II+III, sector 3; Telefon: +40 21 316.08.04, 316.08.10; Fax: +40 21 316.08.03; Cod poștal: 030837
Website: www.onrc.ro; E-mail: onrc@onrc.ro; Cod identificare Fiscală: 14942091

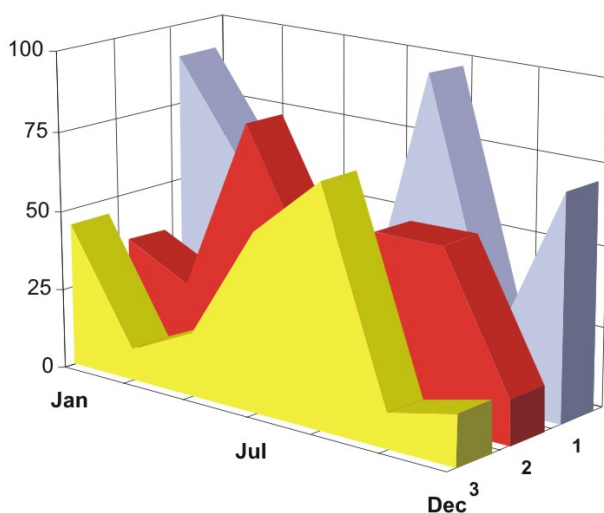
OPERATIONS IN THE CENTRAL TRADE REGISTER

STATISTIC SYNTHESIS

OF

RECORDS IN THE CENTRAL TRADE REGISTER

- 31st December 2009 - provisional data -



- ISSUE No. 217 -

**MINISTRY OF JUSTICE
THE NATIONAL TRADE REGISTER OFFICE**

- Operations such as incorporation of trading companies, submission of changes, and strike-off are carried out based on Law No.26/1990, as republished, Law No.31/1990, as republished and on the Methodological Norms no. P/608/1998.

- This work reflects the evolution of the operations with the Trade Register Office attached to Bucharest Law Court and the Trade Register Offices attached to County Law Courts.

- The data contained in the Central Trade Register refer to operations for which law sets out the obligation of being registered in the trade registers kept by the 42 trade register offices attached to law courts.

• The content of this publication shall not be reproduced, partly or entirely, in original or modified form, and shall not be stored in a recovery system and shall not be transmitted in any form or by any means without prior written authorization of the Ministry of Justice – The National Trade Register Office.

• The content of this publication December be used in articles, studies, books, as supporting or explanatory data only by clearly and accurately indicating the source.

CONTENTS

Page

1	Definitions	1
2.1	Data related to the period December 1990 –December 2009	3
<hr/>		
	Table no. 1 – Operations performed in the trade registers by categories of registration during December 1990 –December 2009, total by country and by counties, shares of counties in the total by country	3
	Table no. 2 – Operations performed in the trade registers by categories of registration during 1990 –December 2009, total by country and counties, share of categories of operations in the total of each county	4
	Table no. 3 – Number and structure of incorporations in the trade registers during 1990-December 2009	5
	Chart no. 1 – Structure by years of incorporations in the trade register	
	Table no. 4 – Number of incorporations in the trade registers by counties and capital sources during 1990 - December 2009	6
	Table no. 5 – Number of incorporations in the trade registers by counties and business categories during 1990 –December 2009	7
<hr/>		
2.2	Data related to December 2009	8
<hr/>		
	Table no. 6 – Operations performed in the trade registers by counties and categories of registrations in the month of December 2009	8
	Table no. 7 – Number of incorporations in the trade registers by counties and capital sources in the month of December 2009	9
	Table no. 8 – Number of incorporations in the trade registers by counties and business categories in the month of December 2009	10
	Table no. 9 –Number of incorporations in the trade registers by domains of activity and business categories in the month of December 2009	11-12
	Table no. 10 – Number of incorporated trading companies and the value of subscribed share capital, by counties, in the month of December 2009	13
	Table no. 11– Number of incorporated trading companies and the value of subscribed share capital by legal forms, in the month of December 2009	14
	Chart no. 5 – Average value of subscribed share capital by types of trading companies in the month of December 2009	14

Definitions

The Trade Register Office was established based on Law No. 26/1990, as republished and subsequently amended and supplemented, operates as an active institution since 1990 and is twofold structured:

- at national level, represented by the National Trade Register Office organized under the authority of the Ministry of Justice
- at local level, represented by the 42 Trade Register Offices attached to Law Courts, organized under the subordination of the National Trade Register Office

Categories of persons liable to registration in the trade register:

- natural persons: authorized natural persons, individual enterprises and family enterprises currently carrying on trading activities;
 - legal persons represented by: Trading Companies, National Societies and Companies, National R&D Institutes, Autonomous Administrations, Co-operative Societies, Agricultural Co-operatives, Co-operative Organizations, Economic Interest Groupings, European Economic Interest Groupings, European Societies, European Co-operative Societies, branches of trading companies with legal establishment, operation and incorporation regime of trading company legal form under which they were incorporated.
- **Terms used in tables and charts**
- **Number of companies**, depending on the table, represents the number of trading companies incorporated during the reference period, the number of trading companies struck-off from the trade register. The following forms of organization are included: limited liability companies, joint-stock companies, limited partnerships by share, limited partnerships, general partnerships, and branches thereof.
 - **Value of subscribed share capital:**
 - **total, expressed in national currency:** the share capital value resulted by adding up the subscribed values (in cash and in kind) in national currency (lei)

➤ **Regions of economic development:**

<i>North-East:</i>	Suceava, Botoșani, Neamț, Iași, Bacău, Vaslui.
<i>South-East:</i>	Vrancea, Galați, Buzău, Brăila, Tulcea, Constanța.
<i>South-Muntenia:</i>	Argeș, Dâmbovița, Prahova, Teleorman, Giurgiu, Călărași, Ialomița.
<i>South-West Oltenia:</i>	Gorj, Vâlcea, Dolj, Mehedinți, Olt.
<i>West:</i>	Arad, Caraș-Severin, Hunedoara, Timiș.
<i>North-West:</i>	Bihor, Bistrița, Cluj, Satu Mare, Sălaj, Maramureș.
<i>Center:</i>	Alba, Brașov, Covasna, Harghita, Mureș, Sibiu.
<i>Bucharest-Ilfov:</i>	București, Ilfov.

NACE Code – The classification of economic activities in the national economy was approved by GO No. 656/1997, amended by Order No 601/2002 and Order no. 337/2007 of the President of the National Institute of Statistics, and complies with the international classification used in statistic reports and official documents. The activities are ranked by the harmonization principle, by sections, divisions, groups and classes.

Abbreviations

- **PF** - Natural Person; the following forms of organization are included in this category: natural persons and family associations registered until 25.04.2008, authorized natural persons, individual enterprises and family enterprises.
- **SNC** - General Partnership
- **SCS** - Limited Partnership
- **SCA** - Limited Partnership by Share
- **SA** - Joint-Stock Company
- **SRL** - Limited Liability Company
- **RA** - Autonomous Administration
- **APJ** - Other legal persons having the obligation to register in the trade register: National R&D Institutes, Economic Interest Groupings, European Economic Interest Groupings, European Societies, European Co-operative Societies, Agricultural Co-operatives, Co-operative Organizations.

Sources of Information:

The integrated IT system of the trade register is designed by The National Trade Register Office in compliance with the provisions of the related legislation in force. The source of information consists of the trade registers organized in computerized system, kept by the trade register offices attached to law courts.

Table no. 1

**Operations performed in the trade registers by categories of registration during
December 1990 – December 2009, total by country and by counties, share of
counties in the total by country**

Counties	Total of registered operations		out of which :					
			Registered companies		Changes in statutory documents		Strike off companies	
	No.	%	No.	%	No.	%	No.	%
0	1	2	3	4	7	8	11	12
Total ROMÂNIA	12738515	100,0	1963172	100,0	10149600	100,0	625743	100,0
ALBA	190990	1,5	31485	1,6	151818	1,5	7687	1,2
ARAD	295318	2,3	47925	2,4	234395	2,3	12998	2,1
ARGES	308754	2,4	50139	2,6	246543	2,4	12072	1,9
BACAU	290036	2,3	48941	2,5	226414	2,2	14681	2,3
BIHOR	386427	3,0	60496	3,1	307780	3,0	18151	2,9
BISTRITA-NASAUD	152304	1,2	24317	1,2	120071	1,2	7916	1,3
BOTOSANI	117341	0,9	23966	1,2	86394	0,9	6981	1,1
BRASOV	504428	4,0	61371	3,1	427536	4,2	15521	2,5
BRAILA	198788	1,6	27238	1,4	165817	1,6	5733	0,9
BUZAU	220822	1,7	35534	1,8	172488	1,7	12800	2,0
CARAS-SEVERIN	151113	1,2	23858	1,2	117283	1,2	9972	1,6
CALARASI	114656	0,9	19785	1,0	89086	0,9	5785	0,9
CLUJ	569185	4,5	90734	4,6	457770	4,5	20681	3,3
CONSTANTA	538924	4,2	81485	4,2	427419	4,2	30020	4,8
COVASNA	111301	0,9	16813	0,9	88908	0,9	5580	0,9
DAMBOVITA	184311	1,4	36517	1,9	132056	1,3	15738	2,5
DOLJ	339165	2,7	51507	2,6	271848	2,7	15810	2,5
GALATI	328523	2,6	46473	2,4	264676	2,6	17374	2,8
GIURGIU	100307	0,8	16360	0,8	78063	0,8	5884	0,9
GORJ	199663	1,6	23053	1,2	169225	1,7	7385	1,2
HARGHITA	188512	1,5	30552	1,6	150898	1,5	7062	1,1
HUNEDOARA	258268	2,0	39795	2,0	203212	2,0	15261	2,4
IALOMITA	118335	0,9	18310	0,9	93185	0,9	6840	1,1
IASI	420506	3,3	64342	3,3	339053	3,3	17111	2,7
MARAMURES	260476	2,0	49806	2,5	197766	1,9	12904	2,1
MEHEDINTI	133059	1,0	21879	1,1	102426	1,0	8754	1,4
MURES	357708	2,8	49196	2,5	292176	2,9	16336	2,6
NEAMT	277339	2,2	42106	2,1	218492	2,2	16741	2,7
OLT	155436	1,2	27214	1,4	117596	1,2	10626	1,7
PRAHOVA	431446	3,4	65569	3,3	345914	3,4	19963	3,2
SALAJ	110611	0,9	19486	1,0	84678	0,8	6447	1,0
SATU MARE	198181	1,6	33335	1,7	152898	1,5	11948	1,9
SIBIU	280162	2,2	38649	2,0	230343	2,3	11170	1,8
SUCEAVA	303377	2,4	48720	2,5	235169	2,3	19488	3,1
TELEORMAN	136050	1,1	22501	1,1	108042	1,1	5507	0,9
TIMIS	418744	3,3	69799	3,6	328462	3,2	20483	3,3
TULCEA	151689	1,2	19970	1,0	125388	1,2	6331	1,0
VASLUI	157746	1,2	24589	1,3	123482	1,2	9675	1,5
VALCEA	193121	1,5	31702	1,6	150261	1,5	11158	1,8
VRANCEA	155511	1,2	24012	1,2	125547	1,2	5952	1,0
MUN. BUCURESTI	2528182	19,8	367077	18,7	2032109	20,0	128996	20,6
ILFOV	201700	1,6	36566	1,9	156913	1,5	8221	1,3

Table no. 2

Operations performed in the trade registers during December 1990 – December 2009, total by country and counties, share of categories of operations in the total of each county

Counties	Total of registered operations		out of which :					
			Registered companies		Changes in statutory documents		Strike off companies	
	No.	%	No.	%	No.	%	No.	%
0	1	2	3	4	7	8	11	12
Total ROMÂNIA	12738515	100,0	1963172	15,4	10149600	79,7	625743	4,9
ALBA	190990	100,0	31485	16,5	151818	79,5	7687	4,0
ARAD	295318	100,0	47925	16,2	234395	79,4	12998	4,4
ARGES	308754	100,0	50139	16,2	246543	79,9	12072	3,9
BACAU	290036	100,0	48941	16,9	226414	78,1	14681	5,1
BIHOR	386427	100,0	60496	15,7	307780	79,6	18151	4,7
BISTRITA-NASAUD	152304	100,0	24317	16,0	120071	78,8	7916	5,2
BOTOSANI	117341	100,0	23966	20,4	86394	73,6	6981	5,9
BRASOV	504428	100,0	61371	12,2	427536	84,8	15521	3,1
BRAILA	198788	100,0	27238	13,7	165817	83,4	5733	2,9
BUZAU	220822	100,0	35534	16,1	172488	78,1	12800	5,8
CARAS-SEVERIN	151113	100,0	23858	15,8	117283	77,6	9972	6,6
CALARASI	114656	100,0	19785	17,3	89086	77,7	5785	5,0
CLUJ	569185	100,0	90734	15,9	457770	80,4	20681	3,6
CONSTANTA	538924	100,0	81485	15,1	427419	79,3	30020	5,6
COVASNA	111301	100,0	16813	15,1	88908	79,9	5580	5,0
DAMBOVITA	184311	100,0	36517	19,8	132056	71,6	15738	8,5
DOLJ	339165	100,0	51507	15,2	271848	80,2	15810	4,7
GALATI	328523	100,0	46473	14,1	264676	80,6	17374	5,3
GIURGIU	100307	100,0	16360	16,3	78063	77,8	5884	5,9
GORJ	199663	100,0	23053	11,5	169225	84,8	7385	3,7
HARGHITA	188512	100,0	30552	16,2	150898	80,0	7062	3,7
HUNEDOARA	258268	100,0	39795	15,4	203212	78,7	15261	5,9
IALOMITA	118335	100,0	18310	15,5	93185	78,7	6840	5,8
IASI	420506	100,0	64342	15,3	339053	80,6	17111	4,1
MARAMURES	260476	100,0	49806	19,1	197766	75,9	12904	5,0
MEHEDINTI	133059	100,0	21879	16,4	102426	77,0	8754	6,6
MURES	357708	100,0	49196	13,8	292176	81,7	16336	4,6
NEAMT	277339	100,0	42106	15,2	218492	78,8	16741	6,0
OLT	155436	100,0	27214	17,5	117596	75,7	10626	6,8
PRAHOVA	431446	100,0	65569	15,2	345914	80,2	19963	4,6
SALAJ	110611	100,0	19486	17,6	84678	76,6	6447	5,8
SATU MARE	198181	100,0	33335	16,8	152898	77,2	11948	6,0
SIBIU	280162	100,0	38649	13,8	230343	82,2	11170	4,0
SUCEAVA	303377	100,0	48720	16,1	235169	77,5	19488	6,4
TELEORMAN	136050	100,0	22501	16,5	108042	79,4	5507	4,0
TIMIS	418744	100,0	69799	16,7	328462	78,4	20483	4,9
TULCEA	151689	100,0	19970	13,2	125388	82,7	6331	4,2
VASLUI	157746	100,0	24589	15,6	123482	78,3	9675	6,1
VALCEA	193121	100,0	31702	16,4	150261	77,8	11158	5,8
VRANCEA	155511	100,0	24012	15,4	125547	80,7	5952	3,8
MUN. BUCURESTI	2528182	100,0	367077	14,5	2032109	80,4	128996	5,1
ILFOV	201700	100,0	36566	18,1	156913	77,8	8221	4,1

Table no.3

Number and structure of incorporations in the trade registers during December 1990 - December 2009

Period (year, month)	Registered companies		Percentage	
	No.	%	%	
0	1	2	3	
Total, 31 December 2008, out of which	1963172	100,00		
Year 1990	81	0,00		
Year 1991	95840	4,88		
Year 1992	137456	7,00		
Year 1993	117078	5,96		
Year 1994	137445	7,00		
Year 1995	65479	3,34		
Year 1996	62089	3,16		
Year 1997	55663	2,84		
Year 1998	63878	3,25		
Year 1999	57197	2,91		
Year 2000	57278	2,92		
Year 2001	61265	3,12		
Year 2002	84780	4,32		
Year 2003	123582	6,30		
Year 2004	144284	7,35		
Year 2005	159464	8,12		
Year 2006	135371	6,90		
Year 2007	144728	7,37		
Year 2008	144177	7,34		
Year 2009 (I - XII) out of which :	116037			101,8
January	9979			8,6
February	13630			11,7
March	12714			11,0
April	9131			7,9
May	8870			7,6
June	8714			7,5
July	9516			7,5
August	10172			8,2
September	7022			8,77
October	10759			6,05
November	8867			9,27
December	6663			7,64

Note: Column 2 reveals the annual structure of incorporations; column 3 reveals the structure by months during the current year.

Diagram no.1

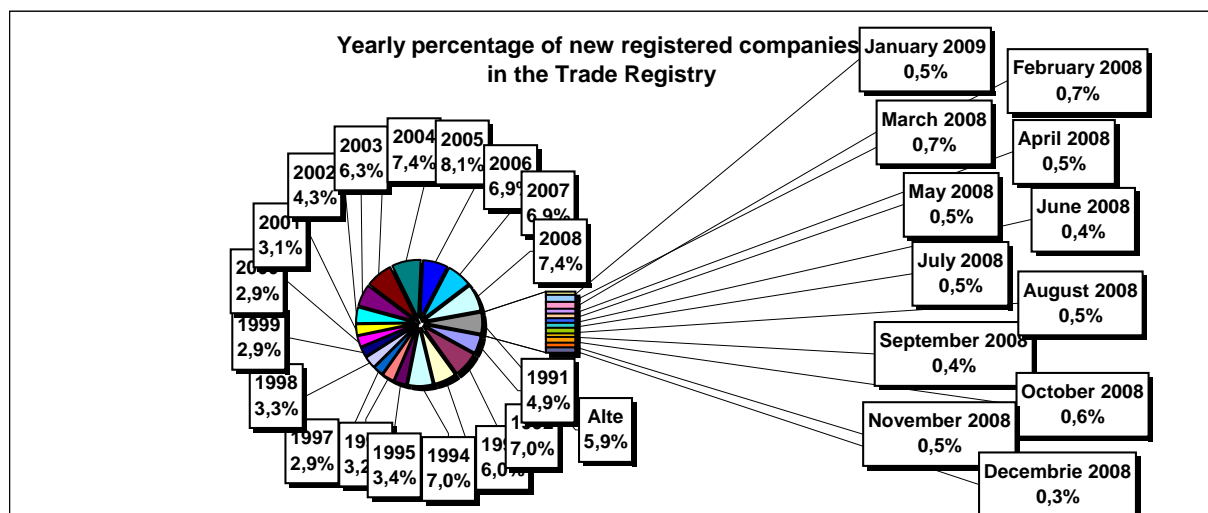


Table no. 4

**Number of incorporations in the trade registers by counties and capital sources during
December 1990 - December 2009**

Counties	Total		out of which:							Ranking by: *
			Private capital				State majority capital		Mixed capital (state+private)	
			out of which:				out of which:			
			PF	Companies	SC	APJ	RA	Companies	Companies	
No.	%	No.	No.	No.	No.	No.	No.	No.		
0	1	2	3	4	5	6	6	7	8	9
Total ROMÂNIA	1963172	100,0	541782	1401276	2051	5602	1388	2394	8637	X
ALBA	31485	1,6	11482	19565	36	147	38	47	170	25
ARAD	47925	2,4	18394	28897	60	167	30	42	336	15
ARGES	50139	2,6	16415	33291	48	173	29	30	153	10
BACAU	48941	2,5	16956	31367	154	161	35	42	226	13
BIHOR	60496	3,1	16307	43562	63	152	40	62	309	8
BISTRITA-NASAUD	24317	1,2	8969	15036	46	100	28	29	109	30
BOTOSANI	23966	1,2	11353	12123	40	135	21	175	119	32
BRASOV	61371	3,1	14315	46569	59	123	49	87	172	7
BRAILA	27238	1,4	7872	18971	42	100	30	45	167	27
BUZAU	35534	1,8	10923	24211	46	153	28	42	131	22
CARAS-SEVERIN	23858	1,2	8465	15004	42	106	38	65	138	33
CALARASI	19785	1,0	6240	13244	22	88	18	77	96	2
CLUJ	90734	4,6	24445	65711	63	157	52	42	264	3
CONSTANTA	81485	4,2	16856	63671	91	210	51	51	543	41
COVASNA	16813	0,9	6352	10182	41	70	24	32	109	21
DAMBOVITA	36517	1,9	16704	19382	32	139	30	75	155	9
DOLJ	51507	2,6	11758	39235	39	168	40	58	203	16
GALATI	46473	2,4	10802	35275	35	137	30	51	143	34
GIURGIU	16360	0,8	4030	11987	16	85	23	109	110	26
GORJ	23053	1,2	5996	16611	27	184	51	83	100	18
HARGHITA	30552	1,6	13178	16921	64	90	24	43	232	40
HUNEDOARA	39795	2,0	11023	28233	33	83	42	95	286	6
IALOMITA	18310	0,9	7100	10947	27	83	15	46	91	20
IASI	64342	3,3	20126	43513	88	166	34	71	344	11
MARAMURES	49806	2,5	20371	29059	44	128	38	41	123	36
MEHEDINTI	21879	1,1	7631	13994	19	90	20	27	98	12
MURES	49196	2,5	18906	29832	68	158	30	34	168	17
NEAMT	42106	2,1	15794	25855	66	165	30	30	166	28
OLT	27214	1,4	10634	16175	27	165	26	64	123	5
PRAHOVA	65569	3,3	21253	43670	67	183	51	73	272	23
SALAJ	19486	1,0	7882	11342	41	110	19	28	64	39
SATU MARE	33335	1,7	11521	21474	41	96	20	42	134	19
SIBIU	38649	2,0	10752	27436	37	120	34	109	160	14
SUCEAVA	48720	2,5	23135	24989	73	206	31	65	221	35
TELEORMAN	22501	1,1	8144	13917	33	158	21	46	182	4
TIMIS	69799	3,6	12658	56467	69	147	38	69	351	37
TULCEA	19970	1,0	7325	12269	36	67	19	42	212	29
VASLUI	24589	1,3	12006	12258	22	110	16	41	136	24
VALCEA	31702	1,6	12830	18441	64	170	42	39	115	31
VRANCEA	24012	1,2	7693	16012	35	114	17	27	114	1
MUN. BUCURESTI	367077	18,7	32271	333257	64	144	115	105	1121	38
ILFOV	36566	1,9	4915	31321	31	94	21	13	171	42

Table no. 5

**Number of incorporations in the trade registers by counties and business categories
during December 1990 – December 2009**

County	Total		out of which:							
			PF	companies: 1412349				RA	SC	APJ
	SNC	SCS		SRL	SA					
	No.	%	No.	No.	No.	No.	No.	No.	No.	
0	1	2	3	4	5	6	7	8	9	10
Total ROMÂNIA	1963172	100,0	541782	32677	1607	1344379	33686	1388	2051	5602
ALBA	31485	1,6	11482	890	11	18307	574	38	36	147
ARAD	47925	2,4	18394	54	13	28507	700	30	60	167
ARGES	50139	2,6	16415	107	15	32512	840	29	48	173
BACAU	48941	2,5	16956	1299	4	29585	747	35	154	161
BIHOR	60496	3,1	16307	127	47	42831	929	40	63	152
BISTRITA-NASAUD	24317	1,2	8969	146	22	14584	422	28	46	100
BOTOSANI	23966	1,2	11353	468	1	11488	460	21	40	135
BRASOV	61371	3,1	14315	239	20	45675	891	49	59	123
BRAILA	27238	1,4	7872	376	12	18269	537	30	42	100
BUZAU	35534	1,8	10923	3747	46	19998	593	28	46	153
CARAS-SEVERIN	23858	1,2	8465	117	9	14606	475	38	42	106
CALARASI	19785	1,0	6240	609	3	12444	361	18	22	88
CLUJ	90734	4,6	24445	2112	21	62541	1343	52	63	157
CONSTANTA	81485	4,2	16856	311	23	62419	1524	51	91	210
COVASNA	16813	0,9	6352	148	4	9868	306	24	41	70
DAMBOVITA	36517	1,9	16704	60	8	19043	501	30	32	139
DOLJ	51507	2,6	11758	1560	8	37022	912	40	39	168
GALATI	46473	2,4	10802	1574	6	33024	865	30	35	137
GIURGIU	16360	0,8	4030	35	8	11833	330	23	16	85
GORJ	23053	1,2	5996	29	1	16259	506	51	27	184
HARGHITA	30552	1,6	13178	62	7	16628	499	24	64	90
HUNEDOARA	39795	2,0	11023	1166	98	26655	695	42	33	83
IALOMITA	18310	0,9	7100	269	12	10449	355	15	27	83
IASI	64342	3,3	20126	508	111	42276	1033	34	88	166
MARAMURES	49806	2,5	20371	1927	23	26669	606	38	44	128
MEHEDINTI	21879	1,1	7631	427	3	13347	342	20	19	90
MURES	49196	2,5	18906	37	34	29279	684	30	68	158
NEAMT	42106	2,1	15794	3293	30	22042	686	30	66	165
OLT	27214	1,4	10634	1611	1	14247	503	26	27	165
PRAHOVA	65569	3,3	21253	3122	15	39945	933	51	67	183
SALAJ	19486	1,0	7882	600	4	10530	300	19	41	110
SATU MARE	33335	1,7	11521	283	9	20884	481	20	41	96
SIBIU	38649	2,0	10752	778	49	26199	680	34	37	120
SUCEAVA	48720	2,5	23135	438	8	24231	598	31	73	206
TELEORMAN	22501	1,1	8144	272	399	13042	432	21	33	158
TIMIS	69799	3,6	12658	616	33	54950	1288	38	69	147
TULCEA	19970	1,0	7325	1363	114	10562	484	19	36	67
VASLUI	24589	1,3	12006	90	13	11908	424	16	22	110
VALCEA	31702	1,6	12830	364	6	17720	506	42	64	170
VRANCEA	24012	1,2	7693	356	10	15322	465	17	35	114
MUN. BUCURESTI	367077	18,7	32271	1038	313	325918	7214	115	64	144
ILFOV	36566	1,9	4915	49	33	30761	662	21	31	94

Table no. 6

Operations performed in the trade registers by counties and categories of registration in the month of December 2009

County	Total of operations carried on		out of which:					
			New incorporations		Changes in statutory documents		Strike off companies	
	No.	%	No.	%	No.	%	No.	%
0	1	2	3	4	5	6	9	10
Total ROMÂNIA	91630	100,0	6663	7,3	79011	86,2	5956	6,5
ALBA	1646	100,0	112	6,8	1338	81,3	196	11,9
ARAD	3171	100,0	154	4,9	2885	91,0	132	4,2
ARGES	1918	100,0	142	7,4	1574	82,1	202	10,5
BACAU	1965	100,0	162	8,2	1672	85,1	131	6,7
BIHOR	3729	100,0	262	7,0	3260	87,4	207	5,6
BISTRITA-NASAUD	1405	100,0	106	7,5	1235	87,9	64	4,6
BOTOSANI	680	100,0	80	11,8	488	71,8	112	16,5
BRASOV	4297	100,0	163	3,8	3937	91,6	197	4,6
BRAILA	1165	100,0	216	18,5	810	69,5	139	11,9
BUZAU	1684	100,0	79	4,7	1251	74,3	354	21,0
CARAS-SEVERIN	843	100,0	60	7,1	759	90,0	24	2,8
CALARASI	914	100,0	90	9,8	769	84,1	55	6,0
CLUJ	4266	100,0	313	7,3	3783	88,7	170	4,0
CONSTANTA	4002	100,0	203	5,1	3647	91,1	152	3,8
COVASNA	767	100,0	62	8,1	647	84,4	58	7,6
DAMBOVITA	948	100,0	112	11,8	774	81,6	62	6,5
DOLJ	2674	100,0	206	7,7	2329	87,1	139	5,2
GALATI	2417	100,0	132	5,5	2171	89,8	114	4,7
GIURGIU	695	100,0	67	9,6	594	85,5	34	4,9
GORJ	972	100,0	69	7,1	850	87,4	53	5,5
HARGHITA	1359	100,0	81	6,0	1158	85,2	120	8,8
HUNEDOARA	2092	100,0	142	6,8	1784	85,3	166	7,9
IALOMITA	465	100,0	53	11,4	392	84,3	20	4,3
IASI	3139	100,0	307	9,8	2553	81,3	279	8,9
MARAMURES	1657	100,0	132	8,0	1434	86,5	91	5,5
MEHEDINTI	795	100,0	69	8,7	675	84,9	51	6,4
MURES	2558	100,0	143	5,6	2238	87,5	177	6,9
NEAMT	1637	100,0	101	6,2	1429	87,3	107	6,5
OLT	773	100,0	70	9,1	656	84,9	47	6,1
PRAHOVA	2917	100,0	266	9,1	2468	84,6	183	6,3
SALAJ	913	100,0	57	6,2	814	89,2	42	4,6
SATU MARE	1898	100,0	105	5,5	1700	89,6	93	4,9
SIBIU	1433	100,0	147	10,3	1140	79,6	146	10,2
SUCEAVA	2183	100,0	109	5,0	1962	89,9	112	5,1
TELEORMAN	614	100,0	92	15,0	469	76,4	53	8,6
TIMIS	3911	100,0	316	8,1	3175	81,2	420	10,7
TULCEA	648	100,0	46	7,1	543	83,8	59	9,1
VASLUI	1005	100,0	63	6,3	899	89,5	43	4,3
VALCEA	1210	100,0	81	6,7	1008	83,3	121	10,0
VRANCEA	1251	100,0	72	5,8	997	79,7	182	14,5
MUN. BUCURESTI	16581	100,0	1029	6,2	14813	89,3	739	4,5
ILFOV	2433	100,0	392	16,1	1931	79,4	110	4,5

Table no.7

Number of incorporations in the trade registers by counties and capital sources in the month of December 2009

County	Total		out of which:						Rnking by: *	
			Private capital				State majority capital			Mixed capital (state+priva)
			out of which:				out of which:			
			PF	Companies	SC	APJ	RA	Companie s		Companie s
No.	%	No.	No.	No.	No.	No.	No.			
0	1	2	3	4	5	6	7	8	9	
Total ROMÂNIA	6663	100,0	3171	3485		2	1	2	3	X
ALBA	112	1,7	47	65						20
ARAD	154	2,3	78	76						13
ARGES	142	2,1	72	70						16
BACAU	162	2,4	86	76						12
BIHOR	262	3,9	141	121						7
BISTRITA-NASAUD	106	1,6	46	60						23
BOTOSANI	80	1,2	40	39		1				30
BRASOV	196	2,9	82	114						10
BRAILA	183	2,7	101	81		1	1			11
BUZAU	79	1,2	44	35						31
CARAS-SEVERIN	60	0,9	25	34					1	39
CALARASI	90	1,4	42	48						27
CLUJ	313	4,7	141	172						4
CONSTANTA	203	3,0	85	118						9
COVASNA	62	0,9	38	24						38
DAMBOVITA	112	1,7	68	44						21
DOLJ	206	3,1	78	128						8
GALATI	132	2,0	56	76						18
GIURGIU	67	1,0	16	51						36
GORJ	69	1,0	42	27						34
HARGHITA	81	1,2	53	28						28
HUNEDOARA	142	2,1	70	70			1		1	17
IALOMITA	53	0,8	25	28						41
IASI	307	4,6	154	153						5
MARAMURES	132	2,0	77	55						19
MEHEDINTI	69	1,0	47	22						35
MURES	143	2,1	94	49						15
NEAMT	101	1,5	53	48						25
OLT	70	1,1	29	41						33
PRAHOVA	266	4,0	167	99						6
SALAJ	57	0,9	37	20						40
SATU MARE	105	1,6	56	49						24
SIBIU	147	2,2	75	71					1	14
SUCEAVA	109	1,6	59	50						22
TELEORMAN	92	1,4	46	46						26
TIMIS	316	4,7	132	183		1				3
TULCEA	46	0,7	17	29						42
VASLUI	63	0,9	40	23						37
VALCEA	81	1,2	36	45						29
VRANCEA	72	1,1	35	37						32
MUN. BUCURESTI	1029	15,4	480	549						1
ILFOV	392	5,9	61	331						2

Table no.8

Number of incorporations in the trade registers by counties and business categories in the month of December 2009

County	Total		out of which:							
			PF	companies: 3489				RA	SC	APJ
	SNC	SCS		SRL	SA					
	No.	%	No.	No.	No.	No.	No.	No.		
0	1	2	3	4	5	6	7	8	9	
Total ROMÂNIA	6663	100,0	3171	1		3454	34	1		2
ALBA	112	1,7	47			65				
ARAD	154	2,3	78			75	1			
ARGES	142	2,1	72			69	1			
BACAU	162	2,4	86			74	2			
BIHOR	262	3,9	141	1		119	1			
BISTRITA-NASAUD	106	1,6	46			59	1			
BOTOSANI	80	1,2	40			39				1
BRASOV	163	2,4	82			81				
BRAILA	216	3,2	101			110	4	1		
BUZAU	79	1,2	44			34	1			
CARAS-SEVERIN	60	0,9	25			34	1			
CALARASI	90	1,4	42			48				
CLUJ	313	4,7	141			170	2			
CONSTANTA	203	3,0	85			117	1			
COVASNA	62	0,9	38			24				
DAMBOVITA	112	1,7	68			44				
DOLJ	206	3,1	78			126	2			
GALATI	132	2,0	56			74	2			
GIURGIU	67	1,0	16			51				
GORJ	69	1,0	42			27				
HARGHITA	81	1,2	53			28				
HUNEDOARA	142	2,1	70			72				
IALOMITA	53	0,8	25			27	1			
IASI	307	4,6	154			152	1			
MARAMURES	132	2,0	77			55				
MEHEDINTI	69	1,0	47			21	1			
MURES	143	2,1	94			49				
NEAMT	101	1,5	53			48				
OLT	70	1,1	29			41				
PRAHOVA	266	4,0	167			98	1			
SALAJ	57	0,9	37			20				
SATU MARE	105	1,6	56			49				
SIBIU	147	2,2	75			71	1			
SUCEAVA	109	1,6	59			50				
TELEORMAN	92	1,4	46			46				
TIMIS	316	4,7	132			181	2			1
TULCEA	46	0,7	17			29				
VASLUI	63	0,9	40			23				
VALCEA	81	1,2	36			45				
VRANCEA	72	1,1	35			37				
MUN. BUCURESTI	1029	15,4	480			543	6			
ILFOV	392	5,9	61			329	2			

Table no. 9

Number of incorporations in the trade registers by domains of activity and business categories in the month of December 2009

CAE N segment	Field of activity	Total		out of which:							
				PF	companies: 3489				RA	SC	APJ
		SNC	SCS		SRL	SA					
		No.	%	No.	No.	No.	No.	No.	No.	No.	
0	1	2	3	4	5	6	7	8	9	10	11
	Total ROMÂNIA	6663	100,0	3171	1		3454	34	1		2
1	Agriculture, hunting and related service activities	373	5,6	102			269	1			1
2	Forestry and logging	15	0,2	4			10		1		
3	Fishing and aquaculture	13	0,2	10			3				
5	Mining of hard and brown coal	1	0,0				1				
6	Extraction of crude petroleum and natural gas										
7	Mining of metal ores										
8	Other mining and quarrying	9	0,1				9				
9	Mining support service activities	1	0,0				1				
10	Manufacture of food products	84	1,3	28			56				
11	Manufacture of beverages	17	0,3	9			8				
12	Manufacture of tobacco products	1	0,0				1				
13	Manufacture of textiles	9	0,1	4			5				
14	Manufacture of wearing apparel	42	0,6	19			23				
15	Tanning and dressing of leather; manufacture of luggage, handbags, saddlery, harness and footwear; dressing and dyeing of fur	5	0,1	1			4				
16	Manufacture of wood and of products of wood and cork, except furniture; manufacture of articles of straw and plaiting materials	45	0,7	16			28	1			
17	Manufacture of paper and paper products	6	0,1	1			5				
18	Printing and reproduction of recorded media	15	0,2	4			11				
19	Manufacture of coke and refined petroleum products	1	0,0				1				
20	Manufacture of chemicals and chemical products	7	0,1				7				
21	Manufacture of basic pharmaceutical products and pharmaceutical preparations	1	0,0				1				
22	Manufacture of rubber and plastic products	22	0,3	2			20				
23	Manufacture of other non-metallic mineral products	22	0,3	7			15				
24	Manufacture of basic metals	3	0,0	1			2				
25	Manufacture of fabricated metal products, except machinery and equipment	47	0,7	26			20	1			
26	Manufacture of computer, electronic and optical products	2	0,0				2				
27	Manufacture of electrical equipment	5	0,1	1			4				
28	Manufacture of machinery and equipment n.e.c.	9	0,1				9				
29	Manufacture of motor vehicles, trailers and semi-trailers	3	0,0				3				
30	Manufacture of other transport equipment	4	0,1				4				
31	Manufacture of furniture	21	0,3	8			13				
32	Other manufacturing	22	0,3	14			8				
33	Repair and installation of machinery and equipment	26	0,4	16			10				
35	Electricity, gas, steam and air conditioning supply	50	0,8				50				
36	Water collection, treatment and supply	3	0,0	1			1	1			
37	Sewerage	6	0,1	1			5				
38	Waste collection, treatment and disposal activities; materials recovery	28	0,4	1			27				
39	Remediation activities and other waste management services										
41	Construction of buildings	777	11,7	52			723	2			
42	Civil engineering	53	0,8	2			51				
43	Specialised construction activities	526	7,9	122			403	1			
45	Wholesale and retail trade and repair of motor vehicles and motorcycles	270	4,1	39			231				
46	Wholesale trade, except of motor vehicles and motorcycles	1057	15,9	207			850				1
47	Retail trade, except of motor vehicles and motorcycles	1759	26,4	590			1165	3		1	
49	Land transport and transport via pipelines	551	8,3	198			353				
50	Water transport	5	0,1	1			4				

Table no. 10

Number of incorporated trading companies and the value of the subscribed share capital, by counties, in the month of December 2009

County	Total registered companies		Subscribed capital		Average subscribed capital on company
	No.	%	thousand Lei	%	thousand Lei
0	1	2	3	4	5
Total ROMÂNIA	3489	100,0	1556162,8	100,0	446,0
ALBA	65	1,9	27,6	***	0,4
ARAD	76	2,2	56,9	***	0,7
ARGES	70	2,0	1381,4	0,1	19,7
BACAU	76	2,2	4223,9	0,3	55,6
BIHOR	121	3,5	371,4	0,0	3,1
BISTRITA-NASAUD	60	1,7	21,3	***	0,4
BOTOSANI	39	1,1	36,9	***	0,9
BRASOV	81	2,3	8088,0	0,5	99,9
BRAILA	114	3,3	5873,2	0,4	51,5
BUZAU	35	1,0	29,6	***	0,8
CARAS-SEVERIN	35	1,0	97,7	***	2,8
CALARASI	48	1,4	109,7	***	2,3
CLUJ	172	4,9	19086,7	1,2	111,0
CONSTANTA	118	3,4	427,4	0,0	3,6
COVASNA	24	0,7	33,5	***	1,4
DAMBOVITA	44	1,3	147,3	***	3,3
DOLJ	128	3,7	981,9	0,1	7,7
GALATI	76	2,2	156,5	0,0	2,1
GIURGIU	51	1,5	22,0	***	0,4
GORJ	27	0,8	5,6	***	0,2
HARGHITA	28	0,8	7,8	***	0,3
HUNEDOARA	72	2,1	265,4	0,0	3,7
IALOMITA	28	0,8	206,3	0,0	7,4
IASI	153	4,4	1897,8	0,1	12,4
MARAMURES	55	1,6	113,9	***	2,1
MEHEDINTI	22	0,6	6185,4	0,4	281,2
MURES	49	1,4	5880,3	0,4	120,0
NEAMT	48	1,4	167,3	0,0	3,5
OLT	41	1,2	83,1	***	2,0
PRAHOVA	99	2,8	72,7	***	0,7
SALAJ	20	0,6	4,0	***	0,2
SATU MARE	49	1,4	16,3	***	0,3
SIBIU	72	2,1	1166,8	0,1	16,2
SUCEAVA	50	1,4	188,2	0,0	3,8
TELEORMAN	46	1,3	131,4	***	2,9
TIMIS	183	5,2	1575,4	0,1	8,6
TULCEA	29	0,8	6,7	***	0,2
VASLUI	23	0,7	450,4	0,0	19,6
VALCEA	45	1,3	384,0	0,0	8,5
VRANCEA	37	1,1	1485,6	0,1	40,2
MUN. BUCURESTI	549	15,7	887514,7	57,0	1616,6
ILFOV	331	9,5	607180,6	39,0	1834,4

Table no. 11

Number of incorporated trading companies and the value of the subscribed share capital by legal forms, in the month of December 2009

Company type	Total registered companies		Subscribed capital		Average subscribed capital on company
	No.	%	thousand Lei	%	thousand Lei
0	1	2	3	4	5
Total ROMÂNIA	3489	100,0	1556162,8	100,0	449,6
SNC	1	0,0	4,0	***	
SCS					
SA	34	1,0	1244045,7	79,9	82936,4
SRL	3454	99,0	312113,1	20,1	90,6

Note: The average does not include filials because according to the Law no.31/1990 they are not juridical persons

*** Less than 0,01%

Diagram no.5

