



MINISTRY OF JUSTICE

THE NATIONAL TRADE REGISTER OFFICE

București, Bd. Unirii nr. 74, Bl. J3b, tronson II+III, sector 3; Telefon: +40 21 316.08.04, 316.08.10; Fax: +40 21 316.08.03; Cod poștal: 030837
Website: www.onrc.ro; E-mail: onrc@onrc.ro; Cod identificare Fiscală: 14942091

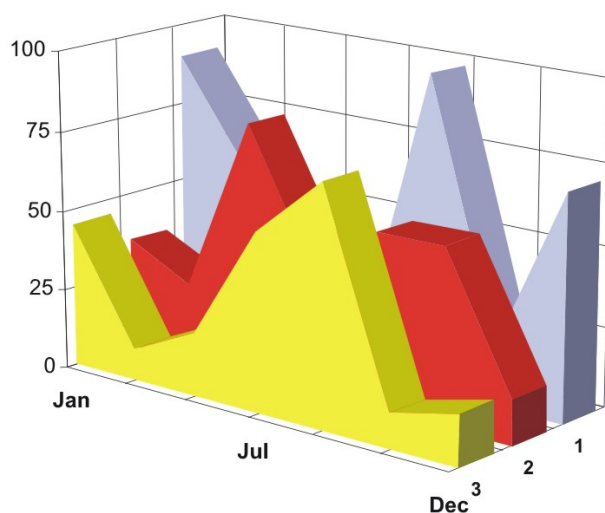
OPERATIONS IN THE CENTRAL TRADE REGISTER

STATISTIC SYNTHESIS

OF

RECORDS IN THE CENTRAL TRADE REGISTER

- 30th November 2009 - provisional data -



- ISSUE No. 216 -

**MINISTRY OF JUSTICE
THE NATIONAL TRADE REGISTER OFFICE**

- Operations such as incorporation of trading companies, submission of changes, and strike-off are carried out based on Law No.26/1990, as republished, Law No.31/1990, as republished and on the Methodological Norms no. P/608/1998.

- This work reflects the evolution of the operations with the Trade Register Office attached to Bucharest Law Court and the Trade Register Offices attached to County Law Courts.

- The data contained in the Central Trade Register refer to operations for which law sets out the obligation of being registered in the trade registers kept by the 42 trade register offices attached to law courts.

- | |
|---|
| <ul style="list-style-type: none">• <i>The content of this publication shall not be reproduced, partly or entirely, in original or modified form, and shall not be stored in a recovery system and shall not be transmitted in any form or by any means without prior written authorization of the Ministry of Justice – The National Trade Register Office.</i>• <i>The content of this publication December be used in articles, studies, books, as supporting or explanatory data only by clearly and accurately indicating the source.</i> |
|---|

CONTENTS

Page

1	Definitions	1
2.1	Data related to the period December 1990 –November 2009	3
<hr/>		
	Table no. 1 – Operations performed in the trade registers by categories of registration during December 1990 –November 2009, total by country and by counties, shares of counties in the total by country	3
	Table no. 2 – Operations performed in the trade registers by categories of registration during December 1990 –November 2009, total by country and counties, share of categories of operations in the total of each county	4
	Table no. 3 – Number and structure of incorporations in the trade registers during December 1990-November 2009	5
	Chart no. 1 – Structure by years of incorporations in the trade register	
	Table no. 4 – Number of incorporations in the trade registers by counties and capital sources during December 1990 - November 2009	6
	Table no. 5 – Number of incorporations in the trade registers by counties and business categories during December 1990 –November 2009	7
<hr/>		
2.2	Data related to November 2009	8
<hr/>		
	Table no. 6 – Operations performed in the trade registers by counties and categories of registrations in the month of November 2009	8
	Table no. 7 – Number of incorporations in the trade registers by counties and capital sources in the month of November 2009	9
	Table no. 8 – Number of incorporations in the trade registers by counties and business categories in the month of November 2009	10
	Table no. 9 –Number of incorporations in the trade registers by domains of activity and business categories in the month of November 2009	11-12
	Table no. 10 – Number of incorporated trading companies and the value of subscribed share capital, by counties, in the month of November 2009	13
	Table no. 11– Number of incorporated trading companies and the value of subscribed share capital by legal forms, in the month of November 2009	14
	Chart no. 5 – Average value of subscribed share capital by types of trading companies in the month of November 2009	14

Definitions

The Trade Register Office was established based on Law No. 26/1990, as republished and subsequently amended and supplemented, operates as an active institution since December 1990 and is twofold structured:

- at national level, represented by the National Trade Register Office organized under the authority of the Ministry of Justice
- at local level, represented by the 42 Trade Register Offices attached to Law Courts, organized under the subordination of the National Trade Register Office

Categories of persons liable to registration in the trade register:

- natural persons: authorized natural persons, individual enterprises and family enterprises currently carrying on trading activities;
 - legal persons represented by: Trading Companies, National Societies and Companies, National R&D Institutes, Autonomous Administrations, Co-operative Societies, Agricultural Co-operatives, Co-operative Organizations, Economic Interest Groupings, European Economic Interest Groupings, European Societies, European Co-operative Societies, branches of trading companies with legal establishment, operation and incorporation regime of trading company legal form under which they were incorporated.
- **Terms used in tables and charts**
- **Number of companies**, depending on the table, represents the number of trading companies incorporated during the reference period, the number of trading companies struck-off from the trade register. The following forms of organization are included: limited liability companies, joint-stock companies, limited partnerships by share, limited partnerships, general partnerships, and branches thereof.
 - **Value of subscribed share capital:**
 - **total, expressed in national currency:** the share capital value resulted by adding up the subscribed values (in cash and in kind) in national currency (lei)

➤ **Regions of economic development:**

<i>North-East:</i>	Suceava, Botoșani, Neamț, Iași, Bacău, Vaslui.
<i>South-East:</i>	Vrancea, Galați, Buzău, Brăila, Tulcea, Constanța.
<i>South-Muntenia:</i>	Argeș, Dâmbovița, Prahova, Teleorman, Giurgiu, Călărași, Ialomița.
<i>South-West Oltenia:</i>	Gorj, Vâlcea, Dolj, Mehedinți, Olt.
<i>West:</i>	Arad, Caraș-Severin, Hunedoara, Timiș.
<i>North-West:</i>	Bihor, Bistrița, Cluj, Satu Mare, Sălaj, Maramureș.
<i>Center:</i>	Alba, Brașov, Covasna, Harghita, Mureș, Sibiu.
<i>Bucharest-Ilfov:</i>	București, Ilfov.

NACE Code – The classification of economic activities in the national economy was approved by GO No. 656/1997, amended by Order No 601/2002 and Order no. 337/2007 of the President of the National Institute of Statistics, and complies with the international classification used in statistic reports and official documents. The activities are ranked by the harmonization principle, by sections, divisions, groups and classes.

Abbreviations

- **PF** - Natural Person; the following forms of organization are included in this category: natural persons and family associations registered until 25.04.2008, authorized natural persons, individual enterprises and family enterprises.
- **SNC** - General Partnership
- **SCS** - Limited Partnership
- **SCA** - Limited Partnership by Share
- **SA** - Joint-Stock Company
- **SRL** - Limited Liability Company
- **RA** - Autonomous Administration
- **APJ** - Other legal persons having the obligation to register in the trade register: National R&D Institutes, Economic Interest Groupings, European Economic Interest Groupings, European Societies, European Co-operative Societies, Agricultural Co-operatives, Co-operative Organizations.

Sources of Information:

The integrated IT system of the trade register is designed by The National Trade Register Office in compliance with the provisions of the related legislation in force. The source of information consists of the trade registers organized in computerized system, kept by the trade register offices attached to law courts.

Table no. 1

**Operations performed in the trade registers by categories of registration during
December 1990 – November 2009, total by country and by counties, share of
counties in the total by country**

Counties	Total of registered operations		out of which :					
			Registered companies		Changes in statutory documents		Strike off companies	
	No.	%	No.	%	No.	%	No.	%
0	1	2	3	4	7	8	11	12
Total ROMÂNIA	12646676	100,0	1956423	100,0	10070589	100,0	619664	100,0
ALBA	189257	1,5	31372	1,6	150480	1,5	7405	1,2
ARAD	292176	2,3	47772	2,4	231510	2,3	12894	2,1
ARGES	306910	2,4	49996	2,6	244969	2,4	11945	1,9
BACAU	288070	2,3	48778	2,5	224742	2,2	14550	2,3
BIHOR	382624	3,0	60219	3,1	304520	3,0	17885	2,9
BISTRITA-NASAUD	150912	1,2	24210	1,2	118836	1,2	7866	1,3
BOTOSANI	116711	0,9	23883	1,2	85906	0,9	6922	1,1
BRASOV	500105	4,0	61157	3,1	423599	4,2	15349	2,5
BRAILA	197674	1,6	27054	1,4	165007	1,6	5613	0,9
BUZAU	219428	1,7	35454	1,8	171237	1,7	12737	2,1
CARAS-SEVERIN	150271	1,2	23798	1,2	116524	1,2	9949	1,6
CALARASI	113752	0,9	19694	1,0	88317	0,9	5741	0,9
CLUJ	564320	4,5	90420	4,6	453987	4,5	19913	3,2
CONSTANTA	534747	4,2	81269	4,2	423772	4,2	29706	4,8
COVASNA	110535	0,9	16747	0,9	88261	0,9	5527	0,9
DAMBOVITA	183353	1,4	36404	1,9	131282	1,3	15667	2,5
DOLJ	336478	2,7	51295	2,6	269519	2,7	15664	2,5
GALATI	325833	2,6	46341	2,4	262505	2,6	16987	2,7
GIURGIU	99611	0,8	16293	0,8	77469	0,8	5849	0,9
GORJ	198687	1,6	22983	1,2	168375	1,7	7329	1,2
HARGHITA	187161	1,5	30471	1,6	149740	1,5	6950	1,1
HUNEDOARA	256237	2,0	39653	2,0	201428	2,0	15156	2,4
IALOMITA	117848	0,9	18257	0,9	92793	0,9	6798	1,1
IASI	417449	3,3	64035	3,3	336500	3,3	16914	2,7
MARAMURES	258809	2,0	49672	2,5	196332	1,9	12805	2,1
MEHEDINTI	132271	1,0	21810	1,1	101751	1,0	8710	1,4
MURES	355164	2,8	49045	2,5	289938	2,9	16181	2,6
NEAMT	275747	2,2	42005	2,1	217063	2,2	16679	2,7
OLT	154575	1,2	27144	1,4	116940	1,2	10491	1,7
PRAHOVA	428382	3,4	65303	3,3	343446	3,4	19633	3,2
SALAJ	109693	0,9	19428	1,0	83864	0,8	6401	1,0
SATU MARE	196279	1,6	33224	1,7	151198	1,5	11857	1,9
SIBIU	278691	2,2	38502	2,0	229203	2,3	10986	1,8
SUCEAVA	301196	2,4	48611	2,5	233207	2,3	19378	3,1
TELEORMAN	135457	1,1	22409	1,1	107573	1,1	5475	0,9
TIMIS	415063	3,3	69483	3,6	325287	3,2	20293	3,3
TULCEA	151081	1,2	19924	1,0	124845	1,2	6312	1,0
VASLUI	156753	1,2	24555	1,3	122583	1,2	9615	1,6
VALCEA	191891	1,5	31590	1,6	149253	1,5	11048	1,8
VRANCEA	154375	1,2	23940	1,2	124550	1,2	5885	0,9
MUN. BUCURESTI	2511785	19,9	366049	18,7	2017296	20,0	128440	20,7
ILFOV	199315	1,6	36174	1,8	154982	1,5	8159	1,3

Table no. 2

Operations performed in the trade registers during December 1990 – November 2009, total by country and counties, share of categories of operations in the total of each county

Counties	Total of registered operations		out of which :					
			Registered companies		Changes in statutory documents		Strike off companies	
	No.	%	No.	%	No.	%	No.	%
0	1	2	3	4	7	8	11	12
Total ROMÂNIA	12646676	100,0	1956423	15,5	10070589	79,6	619664	4,9
ALBA	189257	100,0	31372	16,6	150480	79,5	7405	3,9
ARAD	292176	100,0	47772	16,4	231510	79,2	12894	4,4
ARGES	306910	100,0	49996	16,3	244969	79,8	11945	3,9
BACAU	288070	100,0	48778	16,9	224742	78,0	14550	5,1
BIHOR	382624	100,0	60219	15,7	304520	79,6	17885	4,7
BISTRITA-NASAUD	150912	100,0	24210	16,0	118836	78,7	7866	5,2
BOTOSANI	116711	100,0	23883	20,5	85906	73,6	6922	5,9
BRASOV	500105	100,0	61157	12,2	423599	84,7	15349	3,1
BRAILA	197674	100,0	27054	13,7	165007	83,5	5613	2,8
BUZAU	219428	100,0	35454	16,2	171237	78,0	12737	5,8
CARAS-SEVERIN	150271	100,0	23798	15,8	116524	77,5	9949	6,6
CALARASI	113752	100,0	19694	17,3	88317	77,6	5741	5,0
CLUJ	564320	100,0	90420	16,0	453987	80,4	19913	3,5
CONSTANTA	534747	100,0	81269	15,2	423772	79,2	29706	5,6
COVASNA	110535	100,0	16747	15,2	88261	79,8	5527	5,0
DAMBOVITA	183353	100,0	36404	19,9	131282	71,6	15667	8,5
DOLJ	336478	100,0	51295	15,2	269519	80,1	15664	4,7
GALATI	325833	100,0	46341	14,2	262505	80,6	16987	5,2
GIURGIU	99611	100,0	16293	16,4	77469	77,8	5849	5,9
GORJ	198687	100,0	22983	11,6	168375	84,7	7329	3,7
HARGHITA	187161	100,0	30471	16,3	149740	80,0	6950	3,7
HUNEDOARA	256237	100,0	39653	15,5	201428	78,6	15156	5,9
IALOMITA	117848	100,0	18257	15,5	92793	78,7	6798	5,8
IASI	417449	100,0	64035	15,3	336500	80,6	16914	4,1
MARAMURES	258809	100,0	49672	19,2	196332	75,9	12805	4,9
MEHEDINTI	132271	100,0	21810	16,5	101751	76,9	8710	6,6
MURES	355164	100,0	49045	13,8	289938	81,6	16181	4,6
NEAMT	275747	100,0	42005	15,2	217063	78,7	16679	6,0
OLT	154575	100,0	27144	17,6	116940	75,7	10491	6,8
PRAHOVA	428382	100,0	65303	15,2	343446	80,2	19633	4,6
SALAJ	109693	100,0	19428	17,7	83864	76,5	6401	5,8
SATU MARE	196279	100,0	33224	16,9	151198	77,0	11857	6,0
SIBIU	278691	100,0	38502	13,8	229203	82,2	10986	3,9
SUCEAVA	301196	100,0	48611	16,1	233207	77,4	19378	6,4
TELEORMAN	135457	100,0	22409	16,5	107573	79,4	5475	4,0
TIMIS	415063	100,0	69483	16,7	325287	78,4	20293	4,9
TULCEA	151081	100,0	19924	13,2	124845	82,6	6312	4,2
VASLUI	156753	100,0	24555	15,7	122583	78,2	9615	6,1
VALCEA	191891	100,0	31590	16,5	149253	77,8	11048	5,8
VRANCEA	154375	100,0	23940	15,5	124550	80,7	5885	3,8
MUN. BUCURESTI	2511785	100,0	366049	14,6	2017296	80,3	128440	5,1
ILFOV	199315	100,0	36174	18,1	154982	77,8	8159	4,1

Table no.3

Number and structure of incorporations in the trade registers during December 1990 - November 2009

Period (year, month)	Registered companies		Percentage	
	No.		%	%
0	1	2	3	
Total, 31 December 2008, out of which	1956423	100,00		
Year 1990	81	0,00		
Year 1991	95840	4,90		
Year 1992	137456	7,03		
Year 1993	117078	5,98		
Year 1994	137445	7,03		
Year 1995	65479	3,35		
Year 1996	62089	3,17		
Year 1997	55663	2,85		
Year 1998	63878	3,27		
Year 1999	57197	2,92		
Year 2000	57291	2,93		
Year 2001	61265	3,13		
Year 2002	84780	4,33		
Year 2003	123582	6,32		
Year 2004	144284	7,37		
Year 2005	159464	8,15		
Year 2006	135371	6,92		
Year 2007	144728	7,40		
Year 2008	144177	7,37		
Year 2009 (I - XII) out of which :	109275			108,0
January	9880			9,0
February	13630			12,5
March	12714			11,6
April	9131			8,4
May	8870			8,1
June	8714			8,0
July	9516			8,0
August	10172			8,7
September	7022			9,31
October	10759			6,43
November	8867			9,85

Note: Column 2 reveals the annual structure of incorporations; column 3 reveals the structure by months during the current year.

Diagram no.1

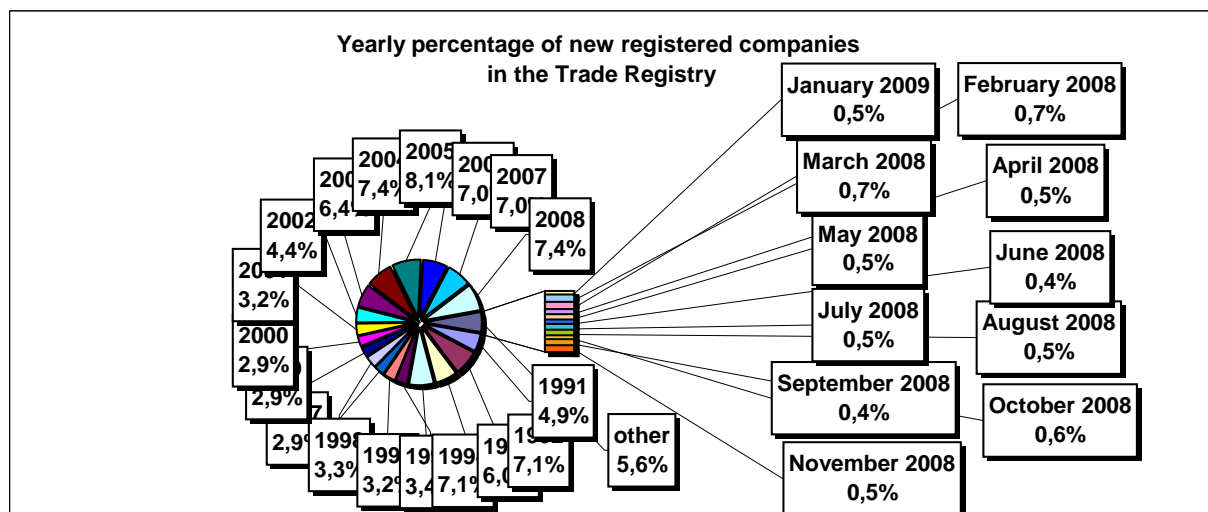


Table no. 4

**Number of incorporations in the trade registers by counties and capital sources during
December 1990 - November 2009**

Counties	Total		out of which:						Ranking by: *	
			Private capital				State majority capital	Mixed capital (state+private)		
			out of which:				out of which:			
			PF	Companies	SC	APJ	RA	Companies		Companies
No.	%	No.	No.	No.	No.	No.	No.	No.		
0	1	2	3	4	5	6	6	7	8	9
Total ROMÂNIA	1956423	100,0	538577	1397791	2051	5586	1387	2393	8634	X
ALBA	31372	1,6	11435	19500	36	146	38	47	170	25
ARAD	47772	2,4	18317	28821	60	167	30	42	336	15
ARGES	49996	2,6	16343	33221	48	172	29	30	153	10
BACAU	48778	2,5	16870	31291	154	160	35	42	226	13
BIHOR	60219	3,1	16154	43441	63	151	40	62	309	8
BISTRITA-NASAUD	24210	1,2	8923	14976	46	99	28	29	109	30
BOTOSANI	23883	1,2	11310	12084	40	134	21	175	119	32
BRASOV	61157	3,1	14214	46455	59	122	49	87	172	7
BRAILA	27054	1,4	7781	18890	42	99	29	45	167	28
BUZAU	35454	1,8	10879	24176	46	152	28	42	131	22
CARAS-SEVERIN	23798	1,2	8440	14970	42	106	38	65	137	33
CALARASI	19694	1,0	6198	13196	22	87	18	77	96	38
CLUJ	90420	4,6	24304	65539	63	156	52	42	264	2
CONSTANTA	81269	4,2	16771	63553	91	209	51	51	543	3
COVASNA	16747	0,9	6314	10158	41	69	24	32	109	41
DAMBOVITA	36404	1,9	16636	19338	32	138	30	75	155	20
DOLJ	51295	2,6	11680	39107	39	167	40	58	203	9
GALATI	46341	2,4	10746	35199	35	137	30	51	143	16
GIURGIU	16293	0,8	4014	11936	16	85	23	109	110	42
GORJ	22983	1,2	5954	16584	27	184	51	83	100	34
HARGHITA	30471	1,6	13125	16893	64	90	24	43	232	26
HUNEDOARA	39653	2,0	10953	28163	33	83	42	94	285	18
IALOMITA	18257	0,9	7075	10919	27	83	15	46	91	40
IASI	64035	3,3	19972	43360	88	166	34	71	344	6
MARAMURES	49672	2,5	20294	29004	44	128	38	41	123	11
MEHEDINTI	21810	1,1	7584	13972	19	90	20	27	98	36
MURES	49045	2,5	18804	29783	68	158	30	34	168	12
NEAMT	42005	2,1	15741	25807	66	165	30	30	166	17
OLT	27144	1,4	10605	16134	27	165	26	64	123	27
PRAHOVA	65303	3,3	21086	43571	67	183	51	73	272	5
SALAJ	19428	1,0	7844	11322	41	110	19	28	64	39
SATU MARE	33224	1,7	11465	21425	41	96	20	42	134	23
SIBIU	38502	2,0	10677	27365	37	120	34	109	159	19
SUCEAVA	48611	2,5	23076	24939	73	206	31	65	221	14
TELEORMAN	22409	1,1	8098	13871	33	158	21	46	182	35
TIMIS	69483	3,6	12526	56284	69	146	38	69	351	4
TULCEA	19924	1,0	7308	12240	36	67	19	42	212	37
VASLUI	24555	1,3	11995	12235	22	110	16	41	136	29
VALCEA	31590	1,6	12763	18396	64	170	42	39	115	24
VRANCEA	23940	1,2	7658	15975	35	114	17	27	114	31
MUN. BUCURESTI	366049	18,7	31791	332708	64	144	115	105	1121	1
ILFOV	36174	1,8	4854	30990	31	94	21	13	171	21

Table no. 5

**Number of incorporations in the trade registers by counties and business categories
during December 1990 – November 2009**

County	Total		out of which:							
			PF	companies: 1408822				RA	SC	APJ
	SNC	SCS		SRL	SA					
	No.	%	No.	No.	No.	No.	No.	No.	No.	
0	1	2	3	4	5	6	7	8	9	10
Total ROMÂNIA	1956423	100,0	538577	32676	1607	1340853	33686	1387	2051	5586
ALBA	31372	1,6	11435	890	11	18242	574	38	36	146
ARAD	47772	2,4	18317	54	13	28432	699	30	60	167
ARGES	49996	2,6	16343	107	15	32443	839	29	48	172
BACAU	48778	2,5	16870	1299	4	29511	745	35	154	160
BIHOR	60219	3,1	16154	126	47	42710	928	40	63	151
BISTRITA-NASAUD	24210	1,2	8923	146	22	14525	421	28	46	99
BOTOSANI	23883	1,2	11310	468	1	11449	460	21	40	134
BRASOV	61157	3,1	14214	239	20	45563	891	49	59	122
BRAILA	27054	1,4	7781	376	12	18182	533	29	42	99
BUZAU	35454	1,8	10879	3747	46	19964	592	28	46	152
CARAS-SEVERIN	23798	1,2	8440	117	9	14572	474	38	42	106
CALARASI	19694	1,0	6198	609	3	12396	361	18	22	87
CLUJ	90420	4,6	24304	2112	21	62371	1341	52	63	156
CONSTANTA	81269	4,2	16771	311	23	62290	1523	51	91	209
COVASNA	16747	0,9	6314	148	4	9841	306	24	41	69
DAMBOVITA	36404	1,9	16636	60	8	18999	501	30	32	138
DOLJ	51295	2,6	11680	1560	8	36891	910	40	39	167
GALATI	46341	2,4	10746	1574	6	32950	863	30	35	137
GIURGIU	16293	0,8	4014	35	8	11782	330	23	16	85
GORJ	22983	1,2	5954	29	1	16232	505	51	27	184
HARGHITA	30471	1,6	13125	62	7	16563	536	24	64	90
HUNEDOARA	39653	2,0	10953	1166	98	26583	695	42	33	83
IALOMITA	18257	0,9	7075	269	12	10422	354	15	27	83
IASI	64035	3,3	19972	508	111	42124	1032	34	88	166
MARAMURES	49672	2,5	20294	1927	23	26612	606	38	44	128
MEHEDINTI	21810	1,1	7584	427	3	13326	341	20	19	90
MURES	49045	2,5	18804	37	34	29230	684	30	68	158
NEAMT	42005	2,1	15741	3293	30	21994	686	30	66	165
OLT	27144	1,4	10605	1611	1	14206	503	26	27	165
PRAHOVA	65303	3,3	21086	3122	15	39847	932	51	67	183
SALAJ	19428	1,0	7844	600	4	10510	300	19	41	110
SATU MARE	33224	1,7	11465	283	9	20829	481	20	41	96
SIBIU	38502	2,0	10677	778	49	26129	678	34	37	120
SUCEAVA	48611	2,5	23076	438	8	24181	598	31	73	206
TELEORMAN	22409	1,1	8098	272	399	12996	432	21	33	158
TIMIS	69483	3,6	12526	616	33	54769	1286	38	69	146
TULCEA	19924	1,0	7308	1363	114	10533	484	19	36	67
VASLUI	24555	1,3	11995	90	13	11885	424	16	22	110
VALCEA	31590	1,6	12763	364	6	17675	506	42	64	170
VRANCEA	23940	1,2	7658	356	10	15285	465	17	35	114
MUN. BUCURESTI	366049	18,7	31791	1038	313	325377	7207	115	64	144
ILFOV	36174	1,8	4854	49	33	30432	660	21	31	94

Table no. 6

Operations performed in the trade registers by counties and categories of registration in the month of November 2009

County	Total of operations carried on		out of which:					
			New incorporations		Changes in statutory documents		Strike off companies	
	No.	%	No.	%	No.	%	No.	%
0	1	2	3	4	5	6	9	10
Total ROMÂNIA	100476	100,0	8867	8,8	85653	85,2	5956	5,9
ALBA	1757	100,0	157	8,9	1404	79,9	196	11,2
ARAD	2967	100,0	239	8,1	2596	87,5	132	4,4
ARGES	2100	100,0	210	10,0	1688	80,4	202	9,6
BACAU	2248	100,0	200	8,9	1917	85,3	131	5,8
BIHOR	3198	100,0	303	9,5	2688	84,1	207	6,5
BISTRITA-NASAUD	1175	100,0	93	7,9	1018	86,6	64	5,4
BOTOSANI	887	100,0	98	11,0	677	76,3	112	12,6
BRASOV	3363	100,0	255	7,6	2911	86,6	197	5,9
BRAILA	1274	100,0	161	12,6	974	76,5	139	10,9
BUZAU	2390	100,0	130	5,4	1906	79,7	354	14,8
CARAS-SEVERIN	835	100,0	69	8,3	742	88,9	24	2,9
CALARASI	801	100,0	101	12,6	645	80,5	55	6,9
CLUJ	4974	100,0	359	7,2	4445	89,4	170	3,4
CONSTANTA	4379	100,0	321	7,3	3906	89,2	152	3,5
COVASNA	873	100,0	104	11,9	711	81,4	58	6,6
DAMBOVITA	1120	100,0	157	14,0	901	80,4	62	5,5
DOLJ	2694	100,0	261	9,7	2294	85,2	139	5,2
GALATI	2569	100,0	225	8,8	2230	86,8	114	4,4
GIURGIU	1012	100,0	104	10,3	874	86,4	34	3,4
GORJ	1102	100,0	78	7,1	971	88,1	53	4,8
HARGHITA	1508	100,0	136	9,0	1252	83,0	120	8,0
HUNEDOARA	2079	100,0	188	9,0	1725	83,0	166	8,0
IALOMITA	774	100,0	118	15,2	636	82,2	20	2,6
IASI	3371	100,0	403	12,0	2689	79,8	279	8,3
MARAMURES	1936	100,0	224	11,6	1621	83,7	91	4,7
MEHEDINTI	987	100,0	125	12,7	811	82,2	51	5,2
MURES	2692	100,0	218	8,1	2297	85,3	177	6,6
NEAMT	1820	100,0	153	8,4	1560	85,7	107	5,9
OLT	916	100,0	118	12,9	751	82,0	47	5,1
PRAHOVA	3149	100,0	334	10,6	2632	83,6	183	5,8
SALAJ	891	100,0	70	7,9	779	87,4	42	4,7
SATU MARE	1576	100,0	159	10,1	1324	84,0	93	5,9
SIBIU	1659	100,0	209	12,6	1304	78,6	146	8,8
SUCEAVA	2096	100,0	165	7,9	1819	86,8	112	5,3
TELEORMAN	662	100,0	132	19,9	477	72,1	53	8,0
TIMIS	4077	100,0	400	9,8	3257	79,9	420	10,3
TULCEA	927	100,0	97	10,5	771	83,2	59	6,4
VASLUI	1030	100,0	99	9,6	888	86,2	43	4,2
VALCEA	1310	100,0	93	7,1	1096	83,7	121	9,2
VRANCEA	1661	100,0	89	5,4	1390	83,7	182	11,0
MUN. BUCURESTI	21082	100,0	1315	6,2	19028	90,3	739	3,5
ILFOV	2555	100,0	397	15,5	2048	80,2	110	4,3

Table no.7

Number of incorporations in the trade registers by counties and capital sources in the month of November 2009

County	Total		out of which:						Rnking by: *	
			Private capital				State majority capital			Mixed capital (state+priva
			out of which:				out of which:			
			PF	Companies	SC	APJ	RA	Companie s		Companie s
No.	%	No.	No.	No.	No.	No.	No.			
0	1	2	3	4	5	6	7	8	9	
Total ROMÂNIA	10478	100,0	4283	6183	3	5	1	3	1	X
ALBA	160	1,5	71	89						22
ARAD	261	2,5	96	165						11
ARGES	260	2,5	90	170						12
BACAU	225	2,1	106	119						16
BIHOR	320	3,1	147	173						8
BISTRITA-NASAUD	134	1,3	57	77						29
BOTOSANI	114	1,1	52	61				1		31
BRASOV	318	3,0	139	178	1					9
BRAILA	156	1,5	97	59						24
BUZAU	148	1,4	58	90						26
CARAS-SEVERIN	73	0,7	26	47						42
CALARASI	129	1,2	68	61						30
CLUJ	494	4,7	148	344		1		1		4
CONSTANTA	370	3,5	123	244	2	1				7
COVASNA	98	0,9	77	21						36
DAMBOVITA	163	1,6	88	75						20
DOLJ	229	2,2	100	129						15
GALATI	263	2,5	107	156						10
GIURGIU	139	1,3	37	102						27
GORJ	105	1,0	46	59						33
HARGHITA	149	1,4	73	75					1	25
HUNEDOARA	222	2,1	100	122						17
IALOMITA	100	1,0	49	51						34
IASI	524	5,0	250	274						2
MARAMURES	237	2,3	153	84						14
MEHEDINTI	97	0,9	71	26						37
MURES	260	2,5	136	124						13
NEAMT	158	1,5	70	88						23
OLT	100	1,0	46	53		1				35
PRAHOVA	414	4,0	197	217						6
SALAJ	75	0,7	37	38						41
SATU MARE	176	1,7	92	83			1	1		19
SIBIU	214	2,0	132	82						18
SUCEAVA	163	1,6	84	79						21
TELEORMAN	139	1,3	49	90						28
TIMIS	513	4,9	138	374		1				3
TULCEA	97	0,9	58	39						38
VASLUI	108	1,0	74	34						32
VALCEA	89	0,8	47	42						40
VRANCEA	90	0,9	38	52						39
MUN. BUCURESTI	1906	18,2	565	1340		1				1
ILFOV	488	4,7	91	397						5

Table no.8

Number of incorporations in the trade registers by counties and business categories in the month of November 2009

County	Total		out of which:							
			PF	companies: 4575				RA	SC	APJ
	SNC	SCS		SRL	SA					
	No.	%	No.	No.	No.	No.	No.	No.		
0	1	2	3	4	5	6	7	8	9	
Total ROMÂNIA	8867	100,0	4283	1	1	4542	31	1	3	5
ALBA	157	1,8	71			86				
ARAD	239	2,7	96			141	2			
ARGES	210	2,4	90			119	1			
BACAU	200	2,3	106			93	1			
BIHOR	303	3,4	147			155	1			
BISTRITA-NASAUD	93	1,0	57			36				
BOTOSANI	98	1,1	52			46				
BRASOV	255	2,9	139			115			1	
BRAILA	161	1,8	97			62	2			
BUZAU	130	1,5	58			72				
CARAS-SEVERIN	69	0,8	26			43				
CALARASI	101	1,1	68			33				
CLUJ	359	4,0	148			208	2			1
CONSTANTA	321	3,6	123			194	1		2	1
COVASNA	104	1,2	77			27				
DAMBOVITA	157	1,8	88			68	1			
DOLJ	261	2,9	100			160	1			
GALATI	225	2,5	107			117	1			
GIURGIU	104	1,2	37			67				
GORJ	78	0,9	46			32				
HARGHITA	136	1,5	73			62	1			
HUNEDOARA	188	2,1	100			87	1			
IALOMITA	118	1,3	49	1		68				
IASI	403	4,5	250			153				
MARAMURES	224	2,5	153			71				
MEHEDINTI	125	1,4	71			54				
MURES	218	2,5	136			82				
NEAMT	153	1,7	70			82	1			
OLT	118	1,3	46			71				1
PRAHOVA	334	3,8	197			136	1			
SALAJ	70	0,8	37			33				
SATU MARE	159	1,8	92			66		1		
SIBIU	209	2,4	132			77				
SUCEAVA	165	1,9	84			81				
TELEORMAN	132	1,5	49			83				
TIMIS	400	4,5	138			260	1			1
TULCEA	97	1,1	58			39				
VASLUI	99	1,1	74			24	1			
VALCEA	93	1,0	47			46				
VRANCEA	89	1,0	38			51				
MUN. BUCURESTI	1315	14,8	565		1	738	10			1
ILFOV	397	4,5	91			304	2			

Table no. 9

Number of incorporations in the trade registers by domains of activity and business categories in the month of November 2009

CAE N segment	Field of activity	Total		out of which:							
				PF	companies: 4575				RA	SC	APJ
		No.	%		No.	SNC	SCS	SRL			
				No.		No.	No.	No.	No.	No.	No.
0	1	2	3	4	5	6	7	8	9	10	11
	Total ROMÂNIA	8867	100,0	4283	1	1	4542	31	1	3	5
1	Agriculture, hunting and related service activities	759	8,6	384	1		371				3
2	Forestry and logging	33	0,4	4		1	27		1		
3	Fishing and aquaculture	25	0,3	16			9				
5	Mining of hard and brown coal	2	0,0				2				
6	Extraction of crude petroleum and natural gas										
7	Mining of metal ores										
8	Other mining and quarrying	10	0,1				10				
9	Mining support service activities	2	0,0	1			1				
10	Manufacture of food products	109	1,2	31			78				
11	Manufacture of beverages	19	0,2	10			6	3			
12	Manufacture of tobacco products										
13	Manufacture of textiles	13	0,1	7			6				
14	Manufacture of wearing apparel	53	0,6	28			25				
15	Tanning and dressing of leather; manufacture of luggage, handbags, saddlery, harness and footwear; dressing and dyeing of fur	15	0,2	4			10	1			
16	Manufacture of wood and of products of wood and cork, except furniture; manufacture of articles of straw and plaiting materials	45	0,5	19			26				
17	Manufacture of paper and paper products	7	0,1	1			6				
18	Printing and reproduction of recorded media	15	0,2	4			11				
19	Manufacture of coke and refined petroleum products										
20	Manufacture of chemicals and chemical products	3	0,0				3				
21	Manufacture of basic pharmaceutical products and pharmaceutical preparations	2	0,0				2				
22	Manufacture of rubber and plastic products	24	0,3	4			20				
23	Manufacture of other non-metallic mineral products	37	0,4	12			25				
24	Manufacture of basic metals	2	0,0				2				
25	Manufacture of fabricated metal products, except machinery and equipment	60	0,7	20			37	3			
26	Manufacture of computer, electronic and optical products	6	0,1	2			4				
27	Manufacture of electrical equipment	3	0,0	1			2				
28	Manufacture of machinery and equipment n.e.c.	7	0,1				7				
29	Manufacture of motor vehicles, trailers and semi-trailers	4	0,0	1			3				
30	Manufacture of other transport equipment	7	0,1				7				
31	Manufacture of furniture	30	0,3	14			16				
32	Other manufacturing	41	0,5	27			14				
33	Repair and installation of machinery and equipment	31	0,3	18			13				
35	Electricity, gas, steam and air conditioning supply	16	0,2				14	2			
36	Water collection, treatment and supply										
37	Sewerage	6	0,1	1			5				
38	Waste collection, treatment and disposal activities; materials recovery	28	0,3	1			27				
39	Remediation activities and other waste management services										
41	Construction of buildings	777	8,8	52			723	2			
42	Civil engineering	53	0,6	2			51				
43	Specialised construction activities	526	5,9	122			403	1			
45	Wholesale and retail trade and repair of motor vehicles and motorcycles	270	3,0	39			231				
46	Wholesale trade, except of motor vehicles and motorcycles	1057	11,9	207			850				2
47	Retail trade, except of motor vehicles and motorcycles	1759	19,8	590			1165	3		1	
49	Land transport and transport via pipelines	551	6,2	198			353				
50	Water transport	5	0,1	1			4				

Table no. 10

Number of incorporated trading companies and the value of the subscribed share capital, by counties, in the month of November 2009

County	Total registered companies		Subscribed capital		Average subscribed capital on company
	No.	%	thousand Lei	%	thousand Lei
0	1	2	3	4	5
Total ROMÂNIA	4575	100,0	138223,0	100,0	30,2
ALBA	86	1,9	34,6	0,0	0,4
ARAD	143	3,1	10338,3	7,5	72,3
ARGES	120	2,6	823,3	0,6	6,9
BACAU	94	2,1	236,0	0,2	2,5
BIHOR	156	3,4	40235,2	29,1	257,9
BISTRITA-NASAUD	36	0,8	10,2	***	0,3
BOTOSANI	46	1,0	22,4	0,0	0,5
BRASOV	115	2,5	26102,8	18,9	227,0
BRAILA	64	1,4	212,5	0,2	3,3
BUZAU	72	1,6	100,8	0,1	1,4
CARAS-SEVERIN	43	0,9	20,5	0,0	0,5
CALARASI	33	0,7	7,8	***	0,2
CLUJ	210	4,6	401,9	0,3	1,9
CONSTANTA	195	4,3	389,4	0,3	2,0
COVASNA	27	0,6	7,8	***	0,3
DAMBOVITA	69	1,5	67,2	0,0	1,0
DOLJ	161	3,5	127,1	0,1	0,8
GALATI	118	2,6	3457,0	2,5	29,3
GIURGIU	67	1,5	26,4	0,0	0,4
GORJ	32	0,7	78,5	0,1	2,5
HARGHITA	63	1,4	164,8	0,1	2,6
HUNEDOARA	88	1,9	966,5	0,7	11,0
IALOMITA	69	1,5	228,6	0,2	3,3
IASI	153	3,3	143,2	0,1	0,9
MARAMURES	71	1,6	109,1	0,1	1,5
MEHEDINTI	54	1,2	14,5	0,0	0,3
MURES	82	1,8	72,6	0,1	0,9
NEAMT	83	1,8	639,2	0,5	7,7
OLT	71	1,6	20,7	0,0	0,3
PRAHOVA	137	3,0	3690,4	2,7	26,9
SALAJ	33	0,7	10,6	***	0,3
SATU MARE	66	1,4	30,9	0,0	0,5
SIBIU	77	1,7	126,4	0,1	1,6
SUCEAVA	81	1,8	27,6	0,0	0,3
TELEORMAN	83	1,8	29,6	0,0	0,4
TIMIS	261	5,7	16348,2	11,8	62,6
TULCEA	39	0,9	16,6	0,0	0,4
VASLUI	25	0,5	97,0	0,1	3,9
VALCEA	46	1,0	36,3	0,0	0,8
VRANCEA	51	1,1	40,1	0,0	0,8
MUN. BUCURESTI	749	16,4	26029,1	18,8	34,8
ILFOV	306	6,7	6681,0	4,8	21,8

Note: The average does not include filials because according to the Law no.31/1990 they are not juridical persons

*** Less than 0,01%

Table no. 11

Number of incorporated trading companies and the value of the subscribed share capital by legal forms, in the month of November 2009

Company type	Total registered companies		Subscribed capital		Average subscribed capital on company
	No.	%	thousand Lei	%	thousand Lei
0	1	2	3	4	5
Total ROMÂNIA	4575	100,0	138223,0	100,0	30,3
SNC	1	0,0			
SCS	1	0,0	2,0	***	
SA	31	0,7	94097,2	68,1	4091,2
SRL	4542	99,3	44123,7	31,9	9,7

Note: The average does not include filials because according to the Law no.31/1990 they are not juridical persons

*** Less than 0,01%

Diagram no.5

