



MINISTRY OF JUSTICE

THE NATIONAL TRADE REGISTER OFFICE

București, Bd. Unirii nr. 74, Bl. J3b, tronson II+III, sector 3; Telefon: +40 21 316.08.04, 316.08.10; Fax: +40 21 316.08.03; Cod poștal: 030837
Website: www.onrc.ro; E-mail: onrc@onrc.ro; Cod identificare Fiscală: 14942091

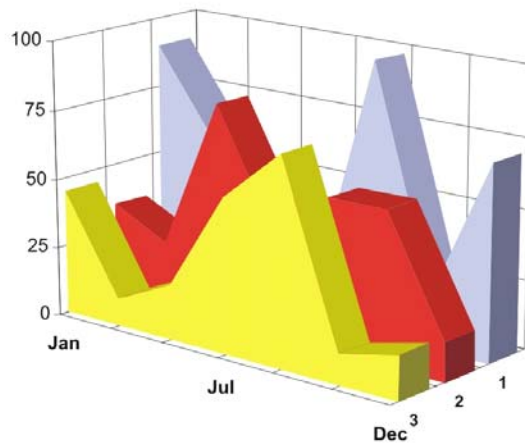
OPERATIONS IN THE CENTRAL TRADE REGISTER

STATISTIC SYNTHESIS

OF

RECORDS IN THE CENTRAL TRADE REGISTER

- 31st October 2009 - provisional data -



- ISSUE No. 215 -

**MINISTRY OF JUSTICE
THE NATIONAL TRADE REGISTER OFFICE**

- Operations such as incorporation of trading companies, submission of changes, and strike-off are carried out based on Law No.26/1990, as republished, Law No.31/1990, as republished and on the Methodological Norms no. P/608/1998.

- This work reflects the evolution of the operations with the Trade Register Office attached to Bucharest Law Court and the Trade Register Offices attached to County Law Courts.

- The data contained in the Central Trade Register refer to operations for which law sets out the obligation of being registered in the trade registers kept by the 42 trade register offices attached to law courts.

- | |
|---|
| <ul style="list-style-type: none">• <i>The content of this publication shall not be reproduced, partly or entirely, in original or modified form, and shall not be stored in a recovery system and shall not be transmitted in any form or by any means without prior written authorization of the Ministry of Justice – The National Trade Register Office.</i>• <i>The content of this publication December be used in articles, studies, books, as supporting or explanatory data only by clearly and accurately indicating the source.</i> |
|---|

CONTENTS

Page

1	Definitions	1
2.1	Data related to the period December 1990 –October 2009	3
<hr/>		
	Table no. 1 – Operations performed in the trade registers by categories of registration during December 1990 –October 2009, total by country and by counties, shares of counties in the total by country	3
	Table no. 2 – Operations performed in the trade registers by categories of registration during December 1990 –October 2009, total by country and counties, share of categories of operations in the total of each county	4
	Table no. 3 – Number and structure of incorporations in the trade registers during December 1990-October 2009	5
	Chart no. 1 – Structure by years of incorporations in the trade register	
	Table no. 4 – Number of incorporations in the trade registers by counties and capital sources during December 1990 - October 2009	6
	Table no. 5 – Number of incorporations in the trade registers by counties and business categories during December 1990 –October 2009	7
<hr/>		
2.2	Data related to October 2009	8
<hr/>		
	Table no. 6 – Operations performed in the trade registers by counties and categories of registrations in the month of October 2009	8
	Table no. 7 – Number of incorporations in the trade registers by counties and capital sources in the month of October 2009	9
	Table no. 8 – Number of incorporations in the trade registers by counties and business categories in the month of October 2009	10
	Table no. 9 –Number of incorporations in the trade registers by domains of activity and business categories in the month of October 2009	11-12
	Table no. 10 – Number of incorporated trading companies and the value of subscribed share capital, by counties, in the month of October 2009	13
	Table no. 11– Number of incorporated trading companies and the value of subscribed share capital by legal forms, in the month of October 2009	14
	Chart no. 5 – Average value of subscribed share capital by types of trading companies in the month of October 2009	14

Definitions

The Trade Register Office was established based on Law No. 26/1990, as republished and subsequently amended and supplemented, operates as an active institution since December 1990 and is twofold structured:

- at national level, represented by the National Trade Register Office organized under the authority of the Ministry of Justice
- at local level, represented by the 42 Trade Register Offices attached to Law Courts, organized under the subordination of the National Trade Register Office

Categories of persons liable to registration in the trade register:

- natural persons: authorized natural persons, individual enterprises and family enterprises currently carrying on trading activities;
 - legal persons represented by: Trading Companies, National Societies and Companies, National R&D Institutes, Autonomous Administrations, Co-operative Societies, Agricultural Co-operatives, Co-operative Organizations, Economic Interest Groupings, European Economic Interest Groupings, European Societies, European Co-operative Societies, branches of trading companies with legal establishment, operation and incorporation regime of trading company legal form under which they were incorporated.
- **Terms used in tables and charts**
- **Number of companies**, depending on the table, represents the number of trading companies incorporated during the reference period, the number of trading companies struck-off from the trade register. The following forms of organization are included: limited liability companies, joint-stock companies, limited partnerships by share, limited partnerships, general partnerships, and branches thereof.
 - **Value of subscribed share capital:**
 - **total, expressed in national currency:** the share capital value resulted by adding up the subscribed values (in cash and in kind) in national currency (lei)

➤ **Regions of economic development:**

<i>North-East:</i>	Suceava, Botoșani, Neamț, Iași, Bacău, Vaslui.
<i>South-East:</i>	Vrancea, Galați, Buzău, Brăila, Tulcea, Constanța.
<i>South-Muntenia:</i>	Argeș, Dâmbovița, Prahova, Teleorman, Giurgiu, Călărași, Ialomița.
<i>South-West Oltenia:</i>	Gorj, Vâlcea, Dolj, Mehedinți, Olt.
<i>West:</i>	Arad, Caraș-Severin, Hunedoara, Timiș.
<i>North-West:</i>	Bihor, Bistrița, Cluj, Satu Mare, Sălaj, Maramureș.
<i>Center:</i>	Alba, Brașov, Covasna, Harghita, Mureș, Sibiu.
<i>Bucharest-Ilfov:</i>	București, Ilfov.

NACE Code – The classification of economic activities in the national economy was approved by GO No. 656/1997, amended by Order No 601/2002 and Order no. 337/2007 of the President of the National Institute of Statistics, and complies with the international classification used in statistic reports and official documents. The activities are ranked by the harmonization principle, by sections, divisions, groups and classes.

Abbreviations

- **PF** - Natural Person; the following forms of organization are included in this category: natural persons and family associations registered until 25.04.2008, authorized natural persons, individual enterprises and family enterprises.
- **SNC** - General Partnership
- **SCS** - Limited Partnership
- **SCA** - Limited Partnership by Share
- **SA** - Joint-Stock Company
- **SRL** - Limited Liability Company
- **RA** - Autonomous Administration
- **APJ** - Other legal persons having the obligation to register in the trade register: National R&D Institutes, Economic Interest Groupings, European Economic Interest Groupings, European Societies, European Co-operative Societies, Agricultural Co-operatives, Co-operative Organizations.

Sources of Information:

The integrated IT system of the trade register is designed by The National Trade Register Office in compliance with the provisions of the related legislation in force. The source of information consists of the trade registers organized in computerized system, kept by the trade register offices attached to law courts.

Table no. 1

**Operations performed in the trade registers by categories of registration during
December 1990 – October 2009, total by country and by counties, share of
counties in the total by country**

Counties	Total of registered operations		out of which :					
			Registered companies		Changes in statutory documents		Strike off companies	
	No.	%	No.	%	No.	%	No.	%
0	1	2	3	4	7	8	11	12
Total ROMÂNIA	12546200	100,0	1947556	100,0	9984936	100,0	613708	100,0
ALBA	187500	1,5	31215	1,6	149076	1,5	7209	1,2
ARAD	289209	2,3	47533	2,4	228914	2,3	12762	2,1
ARGES	304810	2,4	49786	2,6	243281	2,4	11743	1,9
BACAU	285822	2,3	48578	2,5	222825	2,2	14419	2,3
BIHOR	379426	3,0	59916	3,1	301832	3,0	17678	2,9
BISTRITA-NASAUD	149737	1,2	24117	1,2	117818	1,2	7802	1,3
BOTOSANI	115824	0,9	23785	1,2	85229	0,9	6810	1,1
BRASOV	496742	4,0	60902	3,1	420688	4,2	15152	2,5
BRAILA	196400	1,6	26893	1,4	164033	1,6	5474	0,9
BUZAU	217038	1,7	35324	1,8	169331	1,7	12383	2,0
CARAS-SEVERIN	149436	1,2	23729	1,2	115782	1,2	9925	1,6
CALARASI	112951	0,9	19593	1,0	87672	0,9	5686	0,9
CLUJ	559346	4,5	90061	4,6	449542	4,5	19743	3,2
CONSTANTA	530368	4,2	80948	4,2	419866	4,2	29554	4,8
COVASNA	109662	0,9	16643	0,9	87550	0,9	5469	0,9
DAMBOVITA	182233	1,5	36247	1,9	130381	1,3	15605	2,5
DOLJ	333784	2,7	51034	2,6	267225	2,7	15525	2,5
GALATI	323264	2,6	46116	2,4	260275	2,6	16873	2,7
GIURGIU	98599	0,8	16189	0,8	76595	0,8	5815	0,9
GORJ	197585	1,6	22905	1,2	167404	1,7	7276	1,2
HARGHITA	185653	1,5	30335	1,6	148488	1,5	6830	1,1
HUNEDOARA	254158	2,0	39465	2,0	199703	2,0	14990	2,4
IALOMITA	117074	0,9	18139	0,9	92157	0,9	6778	1,1
IASI	414078	3,3	63632	3,3	333811	3,3	16635	2,7
MARAMURES	256873	2,0	49448	2,5	194711	2,0	12714	2,1
MEHEDINTI	131284	1,0	21685	1,1	100940	1,0	8659	1,4
MURES	352472	2,8	48827	2,5	287641	2,9	16004	2,6
NEAMT	273927	2,2	41852	2,1	215503	2,2	16572	2,7
OLT	153659	1,2	27026	1,4	116189	1,2	10444	1,7
PRAHOVA	425233	3,4	64969	3,3	340814	3,4	19450	3,2
SALAJ	108802	0,9	19358	1,0	83085	0,8	6359	1,0
SATU MARE	194703	1,6	33065	1,7	149874	1,5	11764	1,9
SIBIU	277032	2,2	38293	2,0	227899	2,3	10840	1,8
SUCEAVA	299100	2,4	48446	2,5	231388	2,3	19266	3,1
TELEORMAN	134795	1,1	22277	1,1	107096	1,1	5422	0,9
TIMIS	410986	3,3	69083	3,5	322030	3,2	19873	3,2
TULCEA	150154	1,2	19827	1,0	124074	1,2	6253	1,0
VASLUI	155723	1,2	24456	1,3	121695	1,2	9572	1,6
VALCEA	190581	1,5	31497	1,6	148157	1,5	10927	1,8
VRANCEA	152714	1,2	23851	1,2	123160	1,2	5703	0,9
MUN. BUCURESTI	2490703	19,9	364734	18,7	1998268	20,0	127701	20,8
ILFOV	196760	1,6	35777	1,8	152934	1,5	8049	1,3

Table no. 2

Operations performed in the trade registers during December 1990 – October 2009, total by country and counties, share of categories of operations in the total of each county

Counties	Total of registered operations		out of which :					
			Registered companies		Changes in statutory documents		Strike off companies	
	No.	%	No.	%	No.	%	No.	%
0	1	2	3	4	7	8	11	12
Total ROMÂNIA	12546200	100,0	1947556	15,5	9984936	79,6	613708	4,9
ALBA	187500	100,0	31215	16,6	149076	79,5	7209	3,8
ARAD	289209	100,0	47533	16,4	228914	79,2	12762	4,4
ARGES	304810	100,0	49786	16,3	243281	79,8	11743	3,9
BACAU	285822	100,0	48578	17,0	222825	78,0	14419	5,0
BIHOR	379426	100,0	59916	15,8	301832	79,5	17678	4,7
BISTRITA-NASAUD	149737	100,0	24117	16,1	117818	78,7	7802	5,2
BOTOSANI	115824	100,0	23785	20,5	85229	73,6	6810	5,9
BRASOV	496742	100,0	60902	12,3	420688	84,7	15152	3,1
BRAILA	196400	100,0	26893	13,7	164033	83,5	5474	2,8
BUZAU	217038	100,0	35324	16,3	169331	78,0	12383	5,7
CARAS-SEVERIN	149436	100,0	23729	15,9	115782	77,5	9925	6,6
CALARASI	112951	100,0	19593	17,3	87672	77,6	5686	5,0
CLUJ	559346	100,0	90061	16,1	449542	80,4	19743	3,5
CONSTANTA	530368	100,0	80948	15,3	419866	79,2	29554	5,6
COVASNA	109662	100,0	16643	15,2	87550	79,8	5469	5,0
DAMBOVITA	182233	100,0	36247	19,9	130381	71,5	15605	8,6
DOLJ	333784	100,0	51034	15,3	267225	80,1	15525	4,7
GALATI	323264	100,0	46116	14,3	260275	80,5	16873	5,2
GIURGIU	98599	100,0	16189	16,4	76595	77,7	5815	5,9
GORJ	197585	100,0	22905	11,6	167404	84,7	7276	3,7
HARGHITA	185653	100,0	30335	16,3	148488	80,0	6830	3,7
HUNEDOARA	254158	100,0	39465	15,5	199703	78,6	14990	5,9
IALOMITA	117074	100,0	18139	15,5	92157	78,7	6778	5,8
IASI	414078	100,0	63632	15,4	333811	80,6	16635	4,0
MARAMURES	256873	100,0	49448	19,2	194711	75,8	12714	4,9
MEHEDINTI	131284	100,0	21685	16,5	100940	76,9	8659	6,6
MURES	352472	100,0	48827	13,9	287641	81,6	16004	4,5
NEAMT	273927	100,0	41852	15,3	215503	78,7	16572	6,0
OLT	153659	100,0	27026	17,6	116189	75,6	10444	6,8
PRAHOVA	425233	100,0	64969	15,3	340814	80,1	19450	4,6
SALAJ	108802	100,0	19358	17,8	83085	76,4	6359	5,8
SATU MARE	194703	100,0	33065	17,0	149874	77,0	11764	6,0
SIBIU	277032	100,0	38293	13,8	227899	82,3	10840	3,9
SUCEAVA	299100	100,0	48446	16,2	231388	77,4	19266	6,4
TELEORMAN	134795	100,0	22277	16,5	107096	79,5	5422	4,0
TIMIS	410986	100,0	69083	16,8	322030	78,4	19873	4,8
TULCEA	150154	100,0	19827	13,2	124074	82,6	6253	4,2
VASLUI	155723	100,0	24456	15,7	121695	78,1	9572	6,1
VALCEA	190581	100,0	31497	16,5	148157	77,7	10927	5,7
VRANCEA	152714	100,0	23851	15,6	123160	80,6	5703	3,7
MUN. BUCURESTI	2490703	100,0	364734	14,6	1998268	80,2	127701	5,1
ILFOV	196760	100,0	35777	18,2	152934	77,7	8049	4,1

Table no.3

Number and structure of incorporations in the trade registers during December 1990 - October 2009

Period (year, month)	Registered companies		Percentage	
	No.		%	%
0	1	2	3	
Total, 31 December 2008, out of which	1947556	100,00		
Year 1990	81	0,00		
Year 1991	95840	4,92		
Year 1992	137456	7,06		
Year 1993	117078	6,01		
Year 1994	137445	7,06		
Year 1995	65479	3,36		
Year 1996	62089	3,19		
Year 1997	55663	2,86		
Year 1998	63878	3,28		
Year 1999	57197	2,94		
Year 2000	57291	2,94		
Year 2001	61265	3,15		
Year 2002	84780	4,35		
Year 2003	123582	6,35		
Year 2004	144284	7,41		
Year 2005	159464	8,19		
Year 2006	135371	6,95		
Year 2007	144728	7,43		
Year 2008	144177	7,40		
Year 2009 (I - XII) out of which :	100408			108,7
January	9880			9,8
February	13630			13,6
March	12714			12,7
April	9131			9,1
May	8870			8,8
June	8714			8,7
July	9516			8,7
August	10172			9,5
September	7022			10,13
October	10759			6,99

Note: Column 2 reveals the annual structure of incorporations; column 3 reveals the structure by months during the current year.

Diagram no.1

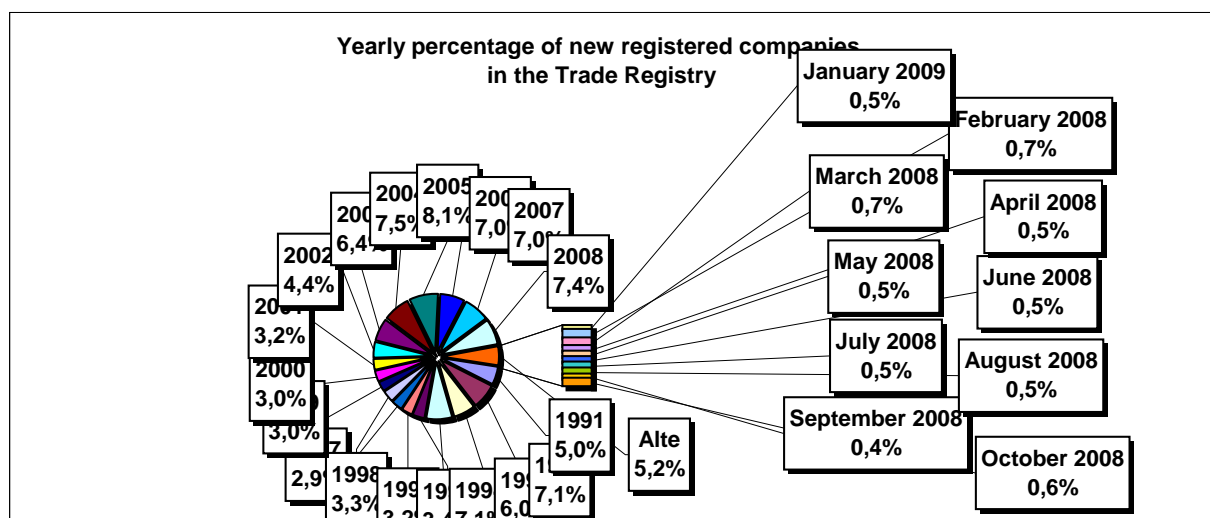


Table no. 4

**Number of incorporations in the trade registers by counties and capital sources during
December 1990 - October 2009**

Counties	Total		out of which:						Ranking by: *	
			Private capital				State majority capital			Mixed capital (state+private)
			out of which:				out of which:			
			PF	Companies	SC	APJ	RA	Companies		Companies
No.	%	No.	No.	No.	No.	No.	No.	No.		
0	1	2	3	4	5	6	6	7	8	9
Total ROMÂNIA	1947556	100,0	534294	1393223	2048	5581	1386	2392	8632	X
ALBA	31215	1,6	11364	19414	36	146	38	47	170	25
ARAD	47533	2,4	18221	28679	60	167	30	41	336	15
ARGES	49786	2,6	16253	33102	48	172	29	30	152	10
BACAU	48578	2,5	16764	31197	154	160	35	42	226	13
BIHOR	59916	3,1	16007	43285	63	151	40	62	309	8
BISTRITA-NASAUD	24117	1,2	8866	14940	46	99	28	29	109	30
BOTOSANI	23785	1,2	11258	12038	40	134	21	175	119	32
BRASOV	60902	3,1	14075	46340	58	122	49	87	172	7
BRAILA	26893	1,4	7684	18827	42	99	29	45	167	28
BUZAU	35324	1,8	10821	24104	46	152	28	42	131	22
CARAS-SEVERIN	23729	1,2	8414	14927	42	106	38	65	137	33
CALARASI	19593	1,0	6130	13163	22	87	18	77	96	38
CLUJ	90061	4,6	24156	65329	63	155	52	42	264	2
CONSTANTA	80948	4,2	16648	63358	89	208	51	51	543	3
COVASNA	16643	0,9	6237	10131	41	69	24	32	109	41
DAMBOVITA	36247	1,9	16548	19269	32	138	30	75	155	20
DOLJ	51034	2,6	11580	38946	39	167	40	58	203	9
GALATI	46116	2,4	10639	35081	35	137	30	51	143	16
GIURGIU	16189	0,8	3977	11869	16	85	23	109	110	42
GORJ	22905	1,2	5908	16552	27	184	51	83	100	34
HARGHITA	30335	1,6	13052	16830	64	90	24	43	232	26
HUNEDOARA	39465	2,0	10853	28075	33	83	42	94	285	18
IALOMITA	18139	0,9	7026	10851	27	83	15	46	91	40
IASI	63632	3,3	19722	43207	88	166	34	71	344	6
MARAMURES	49448	2,5	20141	28933	44	128	38	41	123	11
MEHEDINTI	21685	1,1	7513	13918	19	90	20	27	98	36
MURES	48827	2,5	18668	29701	68	158	30	34	168	12
NEAMT	41852	2,1	15671	25724	66	165	30	30	166	17
OLT	27026	1,4	10559	16063	27	164	26	64	123	27
PRAHOVA	64969	3,3	20889	43434	67	183	51	73	272	5
SALAJ	19358	1,0	7807	11289	41	110	19	28	64	39
SATU MARE	33065	1,7	11373	21360	41	96	19	42	134	23
SIBIU	38293	2,0	10545	27289	37	120	34	109	159	19
SUCEAVA	48446	2,5	22992	24858	73	206	31	65	221	14
TELEORMAN	22277	1,1	8049	13788	33	158	21	46	182	35
TIMIS	69083	3,5	12388	56023	69	145	38	69	351	4
TULCEA	19827	1,0	7250	12201	36	67	19	42	212	37
VASLUI	24456	1,3	11921	12210	22	110	16	41	136	29
VALCEA	31497	1,6	12716	18350	64	170	42	39	115	24
VRANCEA	23851	1,2	7620	15924	35	114	17	27	114	31
MUN. BUCURESTI	364734	18,7	31226	331960	64	143	115	105	1120	1
ILFOV	35777	1,8	4763	30684	31	94	21	13	171	21

*) The total number of incorporations (col 1)

Table no. 5

**Number of incorporations in the trade registers by counties and business categories
during December 1990 – October 2009**

County	Total		out of which:							APJ
			PF	companies: 1404247				RA	SC	
				SNC	SCS	SRL	SA			
				No.	No.	No.	No.			
0	1	2	3	4	5	6	7	8	9	10
Total ROMÂNIA	1947556	100,0	534294	32675	1606	1336311	33655	1386	2048	5581
ALBA	31215	1,6	11364	890	11	18156	574	38	36	146
ARAD	47533	2,4	18221	54	13	28291	697	30	60	167
ARGES	49786	2,6	16253	107	15	32324	838	29	48	172
BACAU	48578	2,5	16764	1299	4	29418	744	35	154	160
BIHOR	59916	3,1	16007	126	47	42555	927	40	63	151
BISTRITA-NASAUD	24117	1,2	8866	146	22	14489	421	28	46	99
BOTOSANI	23785	1,2	11258	468	1	11403	460	21	40	134
BRASOV	60902	3,1	14075	239	20	45448	891	49	58	122
BRAILA	26893	1,4	7684	376	12	18120	531	29	42	99
BUZAU	35324	1,8	10821	3747	46	19892	592	28	46	152
CARAS-SEVERIN	23729	1,2	8414	117	9	14529	474	38	42	106
CALARASI	19593	1,0	6130	609	3	12363	361	18	22	87
CLUJ	90061	4,6	24156	2112	21	62163	1339	52	63	155
CONSTANTA	80948	4,2	16648	311	23	62096	1522	51	89	208
COVASNA	16643	0,9	6237	148	4	9814	306	24	41	69
DAMBOVITA	36247	1,9	16548	60	8	18931	500	30	32	138
DOLJ	51034	2,6	11580	1560	8	36731	909	40	39	167
GALATI	46116	2,4	10639	1574	6	32833	862	30	35	137
GIURGIU	16189	0,8	3977	35	8	11715	330	23	16	85
GORJ	22905	1,2	5908	29	1	16200	505	51	27	184
HARGHITA	30335	1,6	13052	62	7	16501	535	24	64	90
HUNEDOARA	39465	2,0	10853	1166	98	26496	694	42	33	83
IALOMITA	18139	0,9	7026	268	12	10354	354	15	27	83
IASI	63632	3,3	19722	508	111	41971	1032	34	88	166
MARAMURES	49448	2,5	20141	1927	23	26541	606	38	44	128
MEHEDINTI	21685	1,1	7513	427	3	13272	341	20	19	90
MURES	48827	2,5	18668	37	34	29148	684	30	68	158
NEAMT	41852	2,1	15671	3293	30	21912	685	30	66	165
OLT	27026	1,4	10559	1611	1	14135	503	26	27	164
PRAHOVA	64969	3,3	20889	3122	15	39711	931	51	67	183
SALAJ	19358	1,0	7807	600	4	10477	300	19	41	110
SATU MARE	33065	1,7	11373	283	9	20763	481	19	41	96
SIBIU	38293	2,0	10545	778	49	26052	678	34	37	120
SUCEAVA	48446	2,5	22992	438	8	24100	598	31	73	206
TELEORMAN	22277	1,1	8049	272	399	12913	432	21	33	158
TIMIS	69083	3,5	12388	616	33	54509	1285	38	69	145
TULCEA	19827	1,0	7250	1363	114	10494	484	19	36	67
VASLUI	24456	1,3	11921	90	13	11861	423	16	22	110
VALCEA	31497	1,6	12716	364	6	17629	506	42	64	170
VRANCEA	23851	1,2	7620	356	10	15234	465	17	35	114
MUN. BUCURESTI	364734	18,7	31226	1038	312	324639	7197	115	64	143
ILFOV	35777	1,8	4763	49	33	30128	658	21	31	94

Table no. 6

Operations performed in the trade registers by counties and categories of registration in the month of October 2009

County	Total of operations carried on		out of which:					
			New incorporations		Changes in statutory documents		Strike off companies	
	No.	%	No.	%	No.	%	No.	%
0	1	2	3	4	5	6	9	10
Total ROMÂNIA	123745	100,0	10759	8,7	104730	84,6	8256	6,7
ALBA	1496	100,0	182	12,2	1215	81,2	99	6,6
ARAD	2710	100,0	297	11,0	2343	86,5	70	2,6
ARGES	2421	100,0	271	11,2	2014	83,2	136	5,6
BACAU	2729	100,0	238	8,7	2365	86,7	126	4,6
BIHOR	4000	100,0	415	10,4	3312	82,8	273	6,8
BISTRITA-NASAUD	1223	100,0	114	9,3	981	80,2	128	10,5
BOTOSANI	942	100,0	124	13,2	772	82,0	46	4,9
BRASOV	4200	100,0	340	8,1	3666	87,3	194	4,6
BRAILA	1715	100,0	155	9,0	1198	69,9	362	21,1
BUZAU	1862	100,0	161	8,6	1592	85,5	109	5,9
CARAS-SEVERIN	964	100,0	95	9,9	787	81,6	82	8,5
CALARASI	1007	100,0	106	10,5	859	85,3	42	4,2
CLUJ	8048	100,0	526	6,5	7104	88,3	418	5,2
CONSTANTA	4187	100,0	395	9,4	3626	86,6	166	4,0
COVASNA	752	100,0	62	8,2	643	85,5	47	6,3
DAMBOVITA	1699	100,0	173	10,2	1161	68,3	365	21,5
DOLJ	2875	100,0	227	7,9	2488	86,5	160	5,6
GALATI	3901	100,0	281	7,2	2936	75,3	684	17,5
GIURGIU	920	100,0	133	14,5	763	82,9	24	2,6
GORJ	1555	100,0	106	6,8	1380	88,7	69	4,4
HARGHITA	1667	100,0	147	8,8	1520	91,2		
HUNEDOARA	3145	100,0	216	6,9	2641	84,0	288	9,2
IALOMITA	741	100,0	92	12,4	607	81,9	42	5,7
IASI	6580	100,0	524	8,0	4867	74,0	1189	18,1
MARAMURES	2277	100,0	270	11,9	1908	83,8	99	4,3
MEHEDINTI	903	100,0	117	13,0	734	81,3	52	5,8
MURES	3339	100,0	268	8,0	2929	87,7	142	4,3
NEAMT	2667	100,0	183	6,9	2193	82,2	291	10,9
OLT	1110	100,0	99	8,9	956	86,1	55	5,0
PRAHOVA	4188	100,0	399	9,5	3546	84,7	243	5,8
SALAJ	857	100,0	73	8,5	709	82,7	75	8,8
SATU MARE	1870	100,0	175	9,4	1557	83,3	138	7,4
SIBIU	1495	100,0	215	14,4	1136	76,0	144	9,6
SUCEAVA	3344	100,0	173	5,2	2730	81,6	441	13,2
TELEORMAN	707	100,0	138	19,5	508	71,9	61	8,6
TIMIS	4857	100,0	528	10,9	4046	83,3	283	5,8
TULCEA	1145	100,0	85	7,4	992	86,6	68	5,9
VASLUI	1083	100,0	102	9,4	926	85,5	55	5,1
VALCEA	1555	100,0	97	6,2	1342	86,3	116	7,5
VRANCEA	1420	100,0	102	7,2	1261	88,8	57	4,0
MUN. BUCURESTI	26579	100,0	1881	7,1	23996	90,3	702	2,6
ILFOV	3010	100,0	474	15,7	2421	80,4	115	3,8

*) by effect of implementation of Law no. 314/2001, art.1 and art. 6

Table no.7

Number of incorporations in the trade registers by counties and capital sources in the month of October 2009

County	Total		out of which:						Ranking by: *	
			Private capital				State majority capital			Mixed capital (state+private)
			out of which:				out of which:			
			PF	Companies	SC	APJ	RA	Companies		Companies
No.	%	No.	No.	No.		No.	No.	No.		
0	1	2	3	4	5	6	7	8	9	
Total ROMÂNIA	10759	100,0	4555	6183	1	17		2	1	X
ALBA	182	1,7	93	89						20
ARAD	297	2,8	132	165						10
ARGES	271	2,5	101	170						12
BACAU	238	2,2	119	119						15
BIHOR	415	3,9	241	173		1				6
BISTRITA-NASAUD	114	1,1	37	77						31
BOTOSANI	124	1,2	60	61		2		1		29
BRASOV	340	3,2	161	178		1				9
BRAILA	155	1,4	96	59						25
BUZAU	161	1,5	71	90						24
CARAS-SEVERIN	95	0,9	48	47						38
CALARASI	106	1,0	45	61						32
CLUJ	526	4,9	179	344		2		1		3
CONSTANTA	395	3,7	150	244		1				8
COVASNA	62	0,6	41	21						42
DAMBOVITA	173	1,6	98	75						22
DOLJ	227	2,1	98	129						16
GALATI	281	2,6	125	156						11
GIURGIU	133	1,2	31	102						28
GORJ	106	1,0	47	59						33
HARGHITA	147	1,4	71	75					1	26
HUNEDOARA	216	2,0	94	122						17
IALOMITA	92	0,9	41	51						39
IASI	524	4,9	250	274						4
MARAMURES	270	2,5	185	84	1					13
MEHEDINTI	117	1,1	90	26		1				30
MURES	268	2,5	144	124						14
NEAMT	183	1,7	95	88						19
OLT	99	0,9	46	53						36
PRAHOVA	399	3,7	181	217		1				7
SALAJ	73	0,7	35	38						41
SATU MARE	175	1,6	90	83		2				21
SIBIU	215	2,0	133	82						18
SUCEAVA	173	1,6	94	79						23
TELEORMAN	138	1,3	47	90		1				27
TIMIS	528	4,9	152	374		2				2
TULCEA	85	0,8	45	39		1				40
VASLUI	102	0,9	68	34						34
VALCEA	97	0,9	55	42						37
VRANCEA	102	0,9	49	52		1				35
MUN. BUCURESTI	1881	17,5	540	1340		1				1
ILFOV	474	4,4	77	397						5

*) The total number of incorporations (col 1)

*** Less than 0,01%

Table no.8

Number of incorporations in the trade registers by counties and business categories in the month of October 2009

County	Total		out of which:						APJ	
			PF	companies: 6186				RA		SC
	SNC	SCS		SRL	SA					
	No.	%	No.	No.	No.	No.	No.	No.		
0	1	2	3	4	5	6	7	8	9	
Total ROMÂNIA	10759	100,0	4555	1	1	6151	33		1	17
ALBA	182	1,7	93			89				
ARAD	297	2,8	132			164	1			
ARGES	271	2,5	101			170				
BACAU	238	2,2	119			117	2			
BIHOR	415	3,9	241			172	1			1
BISTRITA-NASAUD	114	1,1	37			77				
BOTOSANI	124	1,2	60			61	1			2
BRASOV	340	3,2	161			177	1			1
BRAILA	155	1,4	96			58	1			
BUZAU	161	1,5	71			90				
CARAS-SEVERIN	95	0,9	48			47				
CALARASI	106	1,0	45			61				
CLUJ	526	4,9	179			344	1			2
CONSTANTA	395	3,7	150			244				1
COVASNA	62	0,6	41			21				
DAMBOVITA	173	1,6	98			75				
DOLJ	227	2,1	98			129				
GALATI	281	2,6	125			155	1			
GIURGIU	133	1,2	31			102				
GORJ	106	1,0	47			58	1			
HARGHITA	147	1,4	71			76				
HUNEDOARA	216	2,0	94			122				
IALOMITA	92	0,9	41			51				
IASI	524	4,9	250	1		271	2			
MARAMURES	270	2,5	185			83	1		1	
MEHEDINTI	117	1,1	90			26				1
MURES	268	2,5	144			123	1			
NEAMT	183	1,7	95			87	1			
OLT	99	0,9	46			53				
PRAHOVA	399	3,7	181			216	1			1
SALAJ	73	0,7	35			37	1			
SATU MARE	175	1,6	90			83				2
SIBIU	215	2,0	133			82				
SUCEAVA	173	1,6	94			79				
TELEORMAN	138	1,3	47			90				1
TIMIS	528	4,9	152			373	1			2
TULCEA	85	0,8	45			39				1
VASLUI	102	0,9	68			34				
VALCEA	97	0,9	55			42				
VRANCEA	102	0,9	49			52				1
MUN. BUCURESTI	1881	17,5	540			1329	11			1
ILFOV	474	4,4	77		1	392	4			

Table no. 9

Number of incorporations in the trade registers by domains of activity and business categories in the month of October 2009

CAE N segment	Field of activity	Total		out of which:								
				PF	companies: 6186				RA	SC	APJ	
		SNC	SCS		SRL	SA						
		No.	%	No.	No.	No.	No.	No.	No.	No.	No.	
0	1	2	3	4	5	6	7	8	9	10	11	
	Total ROMÂNIA	10760	100,0	4556	1	1	6151	33			1	17
1	Agriculture, hunting and related service activities	694	6,4	314			370				1	9
2	Forestry and logging	51	0,5	17			34					
3	Fishing and aquaculture	32	0,3	17			15					
5	Mining of hard and brown coal											
6	Extraction of crude petroleum and natural gas	1	0,0				1					
7	Mining of metal ores											
8	Other mining and quarrying	9	0,1				9					
9	Mining support service activities	1	0,0				1					
10	Manufacture of food products	115	1,1	40			75					
11	Manufacture of beverages	21	0,2	12			9					
12	Manufacture of tobacco products											
13	Manufacture of textiles	14	0,1	8			6					
14	Manufacture of wearing apparel	61	0,6	27			34					
15	Tanning and dressing of leather; manufacture of luggage, handbags, saddlery, harness and footwear; dressing and dyeing of fur	18	0,2	3			15					
16	Manufacture of wood and of products of wood and cork, except furniture; manufacture of articles of straw and plaiting materials	61	0,6	14			47					
17	Manufacture of paper and paper products	11	0,1	1			10					
18	Printing and reproduction of recorded media	24	0,2	5			19					
19	Manufacture of coke and refined petroleum products											
20	Manufacture of chemicals and chemical products	8	0,1				8					
21	Manufacture of basic pharmaceutical products and pharmaceutical preparations	3	0,0				3					
22	Manufacture of rubber and plastic products	35	0,3	3			32					
23	Manufacture of other non-metallic mineral products	29	0,3	6			23					
24	Manufacture of basic metals	2	0,0	1			1					
25	Manufacture of fabricated metal products, except machinery and equipment	93	0,9	40			52	1				
26	Manufacture of computer, electronic and optical products	12	0,1				11	1				
27	Manufacture of electrical equipment	7	0,1				7					
28	Manufacture of machinery and equipment n.e.c.	8	0,1	1			7					
29	Manufacture of motor vehicles, trailers and semi-trailers											
30	Manufacture of other transport equipment	4	0,0				4					
31	Manufacture of furniture	47	0,4	19			28					
32	Other manufacturing	36	0,3	25			11					
33	Repair and installation of machinery and equipment	49	0,5	24			25					
35	Electricity, gas, steam and air conditioning supply	40	0,4				40					
36	Water collection, treatment and supply	3	0,0	1				2				
37	Sewerage	6	0,1	1			5					
38	Waste collection, treatment and disposal activities; materials recovery	28	0,3	1			27					
39	Remediation activities and other waste management services											
41	Construction of buildings	777	7,2	52			723	2				
42	Civil engineering	53	0,5	2			51					
43	Specialised construction activities	526	4,9	122			403	1				
45	Wholesale and retail trade and repair of motor vehicles and motorcycles	270	2,5	39			231					
46	Wholesale trade, except of motor vehicles and motorcycles	1057	9,8	207			850					7
47	Retail trade, except of motor vehicles and motorcycles	1759	16,3	590			1165	3		1		
49	Land transport and transport via pipelines	551	5,1	198			353					
50	Water transport	5	0,0	1			4					

Table no. 10

Number of incorporated trading companies and the value of the subscribed share capital, by counties, in the month of October 2009

County	Total registered companies		Subscribed capital		Average subscribed capital on company
	No.	%	thousand Lei	%	thousand Lei
0	1	2	3	4	5
Total ROMÂNIA	6186	100,0	902955,8	100,0	146,0
ALBA	89	1,4	282,1	0,0	3,2
ARAD	165	2,7	13667,3	1,5	82,8
ARGES	170	2,7	240,7	0,0	1,4
BACAU	119	1,9	14067,0	1,6	118,2
BIHOR	173	2,8	6317,7	0,7	36,5
BISTRITA-NASAUD	77	1,2	209,3	0,0	2,7
BOTOSANI	62	1,0	1014,6	0,1	16,4
BRASOV	178	2,9	771,2	0,1	4,3
BRAILA	59	1,0	133,3	0,0	2,3
BUZAU	90	1,5	9483,9	1,1	105,4
CARAS-SEVERIN	47	0,8	473,3	0,1	10,1
CALARASI	61	1,0	50,4	***	0,8
CLUJ	345	5,6	2917,8	0,3	8,5
CONSTANTA	244	3,9	222,8	0,0	0,9
COVASNA	21	0,3	8,5	***	0,4
DAMBOVITA	75	1,2	17,0	***	0,2
DOLJ	129	2,1	305,1	0,0	2,4
GALATI	156	2,5	1142,8	0,1	7,3
GIURGIU	102	1,6	484,7	0,1	4,8
GORJ	59	1,0	171,7	0,0	2,9
HARGHITA	76	1,2	141,5	0,0	1,9
HUNEDOARA	122	2,0	40,5	***	0,3
IALOMITA	51	0,8	20,1	***	0,4
IASI	274	4,4	7800,6	0,9	28,5
MARAMURES	84	1,4	1864,3	0,2	22,2
MEHEDINTI	26	0,4	60,6	***	2,3
MURES	124	2,0	56,6	***	0,5
NEAMT	88	1,4	253,8	0,0	2,9
OLT	53	0,9	142,4	0,0	2,7
PRAHOVA	217	3,5	698,3	0,1	3,2
SALAJ	38	0,6	414,5	0,0	10,9
SATU MARE	83	1,3	119,7	0,0	1,4
SIBIU	82	1,3	31,2	***	0,4
SUCEAVA	79	1,3	358,7	0,0	4,5
TELEORMAN	90	1,5	378,4	0,0	4,2
TIMIS	374	6,0	849,9	0,1	2,3
TULCEA	39	0,6	13,4	***	0,3
VASLUI	34	0,5	10,5	***	0,3
VALCEA	42	0,7	21,4	***	0,5
VRANCEA	52	0,8	36,4	***	0,7
MUN. BUCURESTI	1340	21,7	199600,2	22,1	149,0
ILFOV	397	6,4	638061,8	70,7	1607,2

Note: The average does not include filials because according to the Law no.31/1990 they are not juridical persons

*** Less than 0,01%

Table no. 11

Number of incorporated trading companies and the value of the subscribed share capital by legal forms, in the month of October 2009

Company type	Total registered companies		Subscribed capital		Average subscribed capital on company
	No.	%	thousand Lei	%	thousand Lei
0	1	2	3	4	5
Total ROMÂNIA	6186	100,0	902955,8	100,0	146,6
SNC	1	0,0	0,0	***	
SCS	1	0,0	0,0	***	
SA	33	0,5	512840,3	56,8	23310,9
SRL	6151	99,4	390115,6	43,2	63,6
#REF!					

Note: The average does not include filials because according to the Law no.31/1990 they are not juridical persons

*** Less than 0,01%

Diagram no.5

