



MINISTRY OF JUSTICE

THE NATIONAL TRADE REGISTER OFFICE

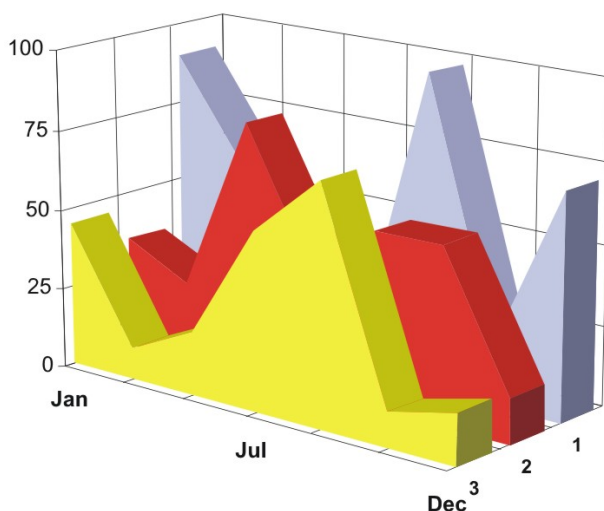
București, Bd. Unirii nr. 74, Bl. J3b, tronson II+III, sector 3; Telefon: +40 21 316.08.04, 316.08.10; Fax: +40 21 316.08.03; Cod poștal: 030837  
Website: [www.onrc.ro](http://www.onrc.ro); E-mail: [onrc@onrc.ro](mailto:onrc@onrc.ro); Cod identificare Fiscală: 14942091

# OPERATIONS IN THE CENTRAL TRADE REGISTER

## STATISTIC SYNTHESIS

OF

**RECORDS IN THE CENTRAL TRADE REGISTER**  
**- 30<sup>th</sup> September 2009 - provisional data -**



- ISSUE No. 214 -

**MINISTRY OF JUSTICE  
THE NATIONAL TRADE REGISTER OFFICE**

---

- Operations such as incorporation of trading companies, submission of changes, and strike-off are carried out based on Law No.26/1990, as republished, Law No.31/1990, as republished and on the Methodological Norms no. P/608/1998.
  
- This work reflects the evolution of the operations with the Trade Register Office attached to Bucharest Law Court and the Trade Register Offices attached to County Law Courts.
  
- The data contained in the Central Trade Register refer to operations for which law sets out the obligation of being registered in the trade registers kept by the 42 trade register offices attached to law courts.

- |   |
|---|
| <ul style="list-style-type: none"><li>• <i>The content of this publication shall not be reproduced, partly or entirely, in original or modified form, and shall not be stored in a recovery system and shall not be transmitted in any form or by any means without prior written authorization of the Ministry of Justice – The National Trade Register Office.</i></li><li>• <i>The content of this publication December be used in articles, studies, books, as supporting or explanatory data only by clearly and accurately indicating the source.</i></li></ul> |
|---|

# CONTENTS

Page

<b>1</b>	<b>Definitions</b>	<b>1</b>
<b>2.1</b>	<b>Data related to the period December 1990 –September 2009</b>	<b>3</b>
<hr/>		
	<b>Table no. 1 – Operations performed in the trade registers by categories of registration during December 1990 –September 2009, total by country and by counties, shares of counties in the total by country</b>	<b>3</b>
	<b>Table no. 2 – Operations performed in the trade registers by categories of registration during December 1990 –September 2009, total by country and counties, share of categories of operations in the total of each county</b>	<b>4</b>
	<b>Table no. 3 – Number and structure of incorporations in the trade registers during December 1990-September 2009</b>	<b>5</b>
	<b>Chart no. 1 – Structure by years of incorporations in the trade register</b>	
	<b>Table no. 4 – Number of incorporations in the trade registers by counties and capital sources during December 1990 - September 2009</b>	<b>6</b>
	<b>Table no. 5 – Number of incorporations in the trade registers by counties and business categories during December 1990 –September 2009</b>	<b>7</b>
<hr/>		
<b>2.2</b>	<b>Data related to September 2009</b>	<b>8</b>
<hr/>		
	<b>Table no. 6 – Operations performed in the trade registers by counties and categories of registrations in the month of September 2009</b>	<b>8</b>
	<b>Table no. 7 – Number of incorporations in the trade registers by counties and capital sources in the month of September 2009</b>	<b>9</b>
	<b>Table no. 8 – Number of incorporations in the trade registers by counties and business categories in the month of September 2009</b>	<b>10</b>
	<b>Table no. 9 –Number of incorporations in the trade registers by domains of activity and business categories in the month of September 2009</b>	<b>11-12</b>
	<b>Table no. 10 – Number of incorporated trading companies and the value of subscribed share capital, by counties, in the month of September 2009</b>	<b>13</b>
	<b>Table no. 11– Number of incorporated trading companies and the value of subscribed share capital by legal forms, in the month of September 2009</b>	<b>14</b>
	<b>Chart no. 5 – Average value of subscribed share capital by types of trading companies in the month of September 2009</b>	<b>14</b>

## Definitions

The Trade Register Office was established based on Law No. 26/1990, as republished and subsequently amended and supplemented, operates as an active institution since December 1990 and is twofold structured:

- at national level, represented by the National Trade Register Office organized under the authority of the Ministry of Justice
- at local level, represented by the 42 Trade Register Offices attached to Law Courts, organized under the subordination of the National Trade Register Office

Categories of persons liable to registration in the trade register:

- natural persons: authorized natural persons, individual enterprises and family enterprises currently carrying on trading activities;
  - legal persons represented by: Trading Companies, National Societies and Companies, National R&D Institutes, Autonomous Administrations, Co-operative Societies, Agricultural Co-operatives, Co-operative Organizations, Economic Interest Groupings, European Economic Interest Groupings, European Societies, European Co-operative Societies, branches of trading companies with legal establishment, operation and incorporation regime of trading company legal form under which they were incorporated.
- **Terms used in tables and charts**
- **Number of companies**, depending on the table, represents the number of trading companies incorporated during the reference period, the number of trading companies struck-off from the trade register. The following forms of organization are included: limited liability companies, joint-stock companies, limited partnerships by share, limited partnerships, general partnerships, and branches thereof.
  - **Value of subscribed share capital:**
    - **total, expressed in national currency:** the share capital value resulted by adding up the subscribed values (in cash and in kind) in national currency (lei)

➤ **Regions of economic development:**

<i>North-East:</i>	Suceava, Botoșani, Neamț, Iași, Bacău, Vaslui.
<i>South-East:</i>	Vrancea, Galați, Buzău, Brăila, Tulcea, Constanța.
<i>South-Muntenia:</i>	Argeș, Dâmbovița, Prahova, Teleorman, Giurgiu, Călărași, Ialomița.
<i>South-West Oltenia:</i>	Gorj, Vâlcea, Dolj, Mehedinți, Olt.
<i>West:</i>	Arad, Caraș-Severin, Hunedoara, Timiș.
<i>North-West:</i>	Bihor, Bistrița, Cluj, Satu Mare, Sălaj, Maramureș.
<i>Center:</i>	Alba, Brașov, Covasna, Harghita, Mureș, Sibiu.
<i>Bucharest-Ilfov:</i>	București, Ilfov.

NACE Code – The classification of economic activities in the national economy was approved by GO No. 656/1997, amended by Order No 601/2002 and Order no. 337/2007 of the President of the National Institute of Statistics, and complies with the international classification used in statistic reports and official documents. The activities are ranked by the harmonization principle, by sections, divisions, groups and classes.

### Abbreviations

- **PF** - Natural Person; the following forms of organization are included in this category: natural persons and family associations registered until 25.04.2008, authorized natural persons, individual enterprises and family enterprises.
- **SNC** - General Partnership
- **SCS** - Limited Partnership
- **SCA** - Limited Partnership by Share
- **SA** - Joint-Stock Company
- **SRL** - Limited Liability Company
- **RA** - Autonomous Administration
- **APJ** - Other legal persons having the obligation to register in the trade register: National R&D Institutes, Economic Interest Groupings, European Economic Interest Groupings, European Societies, European Co-operative Societies, Agricultural Co-operatives, Co-operative Organizations.

### Sources of Information:

The integrated IT system of the trade register is designed by The National Trade Register Office in compliance with the provisions of the related legislation in force. The source of information consists of the trade registers organized in computerized system, kept by the trade register offices attached to law courts.

Table no. 1

**Operations performed in the trade registers by categories of registration during  
December 1990 – September 2009, total by country and by counties, share of  
counties in the total by country**

Counties	Total of registered operations		out of which :					
			Registered companies		Changes in statutory documents		Strike off companies	
	No.	%	No.	%	No.	%	No.	%
0	1	2	3	4	7	8	11	12
<b>Total ROMÂNIA</b>	<b>12422455</b>	<b>100,0</b>	<b>1936797</b>	<b>100,0</b>	<b>9865510</b>	<b>100,0</b>	<b>605452</b>	<b>100,0</b>
ALBA	186004	1,5	31033	1,6	147861	1,5	7110	1,2
ARAD	286499	2,3	47236	2,4	226571	2,3	12692	2,1
ARGES	302389	2,4	49515	2,6	226571	2,3	11607	1,9
BACAU	283093	2,3	48340	2,5	220460	2,2	14293	2,4
BIHOR	375426	3,0	59501	3,1	298520	3,0	17405	2,9
BISTRITA-NASAUD	148514	1,2	24003	1,2	116837	1,2	7674	1,3
BOTOSANI	114882	0,9	23661	1,2	84457	0,9	6764	1,1
BRASOV	492542	4,0	60562	3,1	417022	4,2	14958	2,5
BRAILA	194685	1,6	26738	1,4	162835	1,7	5112	0,8
BUZAU	215176	1,7	35163	1,8	167739	1,7	12274	2,0
CARAS-SEVERIN	148472	1,2	23634	1,2	114995	1,2	9843	1,6
CALARASI	111944	0,9	19487	1,0	86813	0,9	5644	0,9
CLUJ	551298	4,4	89535	4,6	442438	4,5	19325	3,2
CONSTANTA	526181	4,2	80553	4,2	416240	4,2	29388	4,9
COVASNA	108910	0,9	16581	0,9	86907	0,9	5422	0,9
DAMBOVITA	180534	1,5	36074	1,9	129220	1,3	15240	2,5
DOLJ	330909	2,7	50807	2,6	264737	2,7	15365	2,5
GALATI	319363	2,6	45835	2,4	257339	2,6	16189	2,7
GIURGIU	97679	0,8	16056	0,8	75832	0,8	5791	1,0
GORJ	196030	1,6	22799	1,2	166024	1,7	7207	1,2
HARGHITA	183986	1,5	30188	1,6	146968	1,5	6830	1,1
HUNEDOARA	251013	2,0	39249	2,0	197062	2,0	14702	2,4
IALOMITA	116333	0,9	18047	0,9	91550	0,9	6736	1,1
IASI	407498	3,3	63108	3,3	328944	3,3	15446	2,6
MARAMURES	254596	2,0	49178	2,5	192803	2,0	12615	2,1
MEHEDINTI	130381	1,0	21568	1,1	100206	1,0	8607	1,4
MURES	349133	2,8	48559	2,5	284712	2,9	15862	2,6
NEAMT	271260	2,2	41669	2,2	213310	2,2	16281	2,7
OLT	152549	1,2	26927	1,4	115233	1,2	10389	1,7
PRAHOVA	421045	3,4	64570	3,3	337268	3,4	19207	3,2
SALAJ	107945	0,9	19285	1,0	82376	0,8	6284	1,0
SATU MARE	192833	1,6	32890	1,7	148317	1,5	11626	1,9
SIBIU	275537	2,2	38078	2,0	226763	2,3	10696	1,8
SUCEAVA	295756	2,4	48273	2,5	228658	2,3	18825	3,1
TELEORMAN	134088	1,1	22139	1,1	106588	1,1	5361	0,9
TIMIS	406129	3,3	68555	3,5	317984	3,2	19590	3,2
TULCEA	149009	1,2	19742	1,0	123082	1,2	6185	1,0
VASLUI	154640	1,2	24354	1,3	120769	1,2	9517	1,6
VALCEA	189026	1,5	31400	1,6	146815	1,5	10811	1,8
VRANCEA	151294	1,2	23749	1,2	121899	1,2	5646	0,9
MUN. BUCURESTI	2464124	19,8	362853	18,7	1974272	20,0	126999	21,0
ILFOV	193750	1,6	35303	1,8	150513	1,5	7934	1,3

Table no. 2

**Operations performed in the trade registers during December 1990 –  
September 2009, total by country and counties, share of categories of  
operations in the total of each county**

Counties	Total of registered operations		out of which :					
			Registered companies		Changes in statutory documents		Strike off companies	
	No.	%	No.	%	No.	%	No.	%
0	1	2	3	4	7	8	11	12
<b>Total ROMÂNIA</b>	<b>12422455</b>	<b>100,0</b>	<b>1936797</b>	<b>15,6</b>	<b>9880206</b>	<b>79,5</b>	<b>605452</b>	<b>4,9</b>
ALBA	186004	100,0	31033	16,7	147861	79,5	7110	3,8
ARAD	286499	100,0	47236	16,5	226571	79,1	12692	4,4
ARGES	302389	100,0	49515	16,4	241267	79,8	11607	3,8
BACAU	283093	100,0	48340	17,1	220460	77,9	14293	5,0
BIHOR	375426	100,0	59501	15,8	298520	79,5	17405	4,6
BISTRITA-NASAUD	148514	100,0	24003	16,2	116837	78,7	7674	5,2
BOTOSANI	114882	100,0	23661	20,6	84457	73,5	6764	5,9
BRASOV	492542	100,0	60562	12,3	417022	84,7	14958	3,0
BRAILA	194685	100,0	26738	13,7	162835	83,6	5112	2,6
BUZAU	215176	100,0	35163	16,3	167739	78,0	12274	5,7
CARAS-SEVERIN	148472	100,0	23634	15,9	114995	77,5	9843	6,6
CALARASI	111944	100,0	19487	17,4	86813	77,6	5644	5,0
CLUJ	551298	100,0	89535	16,2	442438	80,3	19325	3,5
CONSTANTA	526181	100,0	80553	15,3	416240	79,1	29388	5,6
COVASNA	108910	100,0	16581	15,2	86907	79,8	5422	5,0
DAMBOVITA	180534	100,0	36074	20,0	129220	71,6	15240	8,4
DOLJ	330909	100,0	50807	15,4	264737	80,0	15365	4,6
GALATI	319363	100,0	45835	14,4	257339	80,6	16189	5,1
GIURGIU	97679	100,0	16056	16,4	75832	77,6	5791	5,9
GORJ	196030	100,0	22799	11,6	166024	84,7	7207	3,7
HARGHITA	183986	100,0	30188	16,4	146968	79,9	6830	3,7
HUNEDOARA	251013	100,0	39249	15,6	197062	78,5	14702	5,9
IALOMITA	116333	100,0	18047	15,5	91550	78,7	6736	5,8
IASI	407498	100,0	63108	15,5	328944	80,7	15446	3,8
MARAMURES	254596	100,0	49178	19,3	192803	75,7	12615	5,0
MEHEDINTI	130381	100,0	21568	16,5	100206	76,9	8607	6,6
MURES	349133	100,0	48559	13,9	284712	81,5	15862	4,5
NEAMT	271260	100,0	41669	15,4	213310	78,6	16281	6,0
OLT	152549	100,0	26927	17,7	115233	75,5	10389	6,8
PRAHOVA	421045	100,0	64570	15,3	337268	80,1	19207	4,6
SALAJ	107945	100,0	19285	17,9	82376	76,3	6284	5,8
SATU MARE	192833	100,0	32890	17,1	148317	76,9	11626	6,0
SIBIU	275537	100,0	38078	13,8	226763	82,3	10696	3,9
SUCEAVA	295756	100,0	48273	16,3	228658	77,3	18825	6,4
TELEORMAN	134088	100,0	22139	16,5	106588	79,5	5361	4,0
TIMIS	406129	100,0	68555	16,9	317984	78,3	19590	4,8
TULCEA	149009	100,0	19742	13,2	123082	82,6	6185	4,2
VASLUI	154640	100,0	24354	15,7	120769	78,1	9517	6,2
VALCEA	189026	100,0	31400	16,6	146815	77,7	10811	5,7
VRANCEA	151294	100,0	23749	15,7	121899	80,6	5646	3,7
MUN. BUCURESTI	2464124	100,0	362853	14,7	1974272	80,1	126999	5,2
ILFOV	193750	100,0	35303	18,2	150513	77,7	7934	4,1

Table no.3

Number and structure of incorporations in the trade registers during December 1990 - September 2009

Period (year, month)	Registered companies		Percentage	
	No.		%	%
0	1	2	3	
<b>Total, 31 December 2008, out of which</b>	<b>1936797</b>	<b>100,00</b>		
Year 1990	81	0,00		
Year 1991	95840	4,95		
Year 1992	137456	7,10		
Year 1993	117078	6,04		
Year 1994	137445	7,10		
Year 1995	65479	3,38		
Year 1996	62089	3,21		
Year 1997	55663	2,87		
Year 1998	63878	3,30		
Year 1999	57197	2,95		
Year 2000	57291	2,96		
Year 2001	61265	3,16		
Year 2002	84780	4,38		
Year 2003	123582	6,38		
Year 2004	144284	7,45		
Year 2005	159464	8,23		
Year 2006	135371	6,99		
Year 2007	144728	7,47		
Year 2008	144177	7,44		
<b>Year 2009 (I - XII) out of which :</b>	<b>89649</b>			<b>109,7</b>
January	9880			11,0
February	13630			15,2
March	12714			14,2
April	9131			10,2
May	8870			9,9
June	8714			9,7
July	9516			9,7
August	10172			10,6
September	7022			11,35

Note: Column 2 reveals the annual structure of incorporations; column 3 reveals the structure by months during the current year.

Diagram no.1

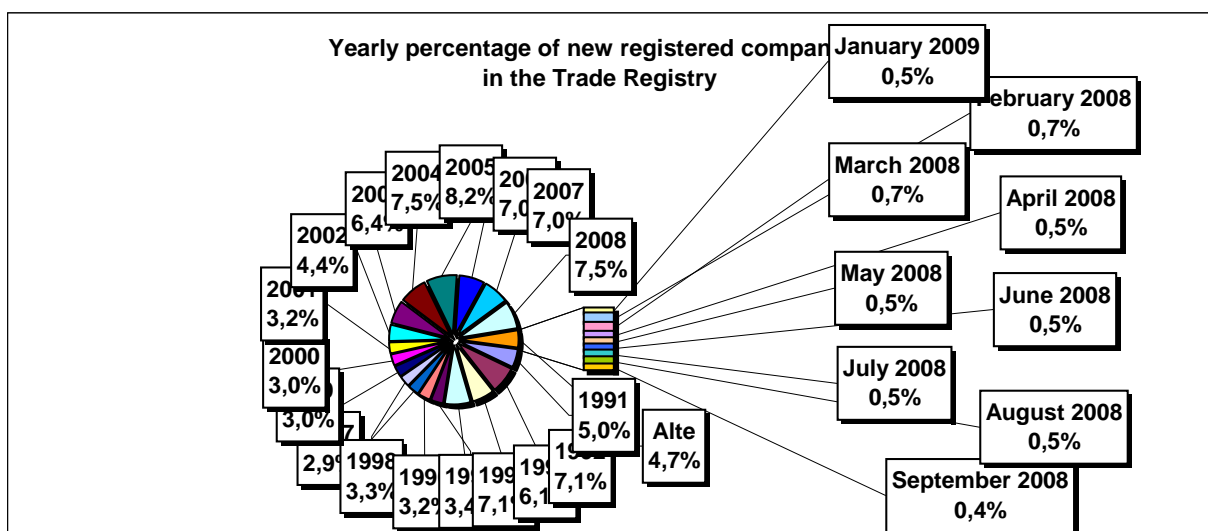


Table no. 4

**Number of incorporations in the trade registers by counties and capital sources during  
December 1990 - September 2009**

Counties	Total		out of which:						Ranking by: *	
			Private capital				State majority capital	Mixed capital (state+private)		
			out of which:				out of which:			Companies
			PF	Companies	SC	APJ	RA	Companies		Companies
No.	%	No.	No.	No.	No.	No.	No.	No.		
0	1	2	3	4	5	6	6	7	8	9
<b>Total ROMÂNIA</b>	<b>1936797</b>	<b>100,0</b>	<b>529739</b>	<b>1387040</b>	<b>2047</b>	<b>5564</b>	<b>1386</b>	<b>2390</b>	<b>8631</b>	<b>X</b>
ALBA	31033	1,6	11271	19325	36	146	38	47	170	25
ARAD	47236	2,4	18089	28514	60	167	30	41	336	15
ARGES	49515	2,6	16152	32932	48	172	29	30	152	10
BACAU	48340	2,5	16645	31078	154	160	35	42	226	13
BIHOR	59501	3,1	15766	43112	63	150	40	62	309	8
BISTRITA-NASAUD	24003	1,2	8829	14863	46	99	28	29	109	30
BOTOSANI	23661	1,2	11198	11977	40	132	21	174	119	32
BRASOV	60562	3,1	13914	46162	58	121	49	87	172	7
BRAILA	26738	1,4	7588	18768	42	99	29	45	167	28
BUZAU	35163	1,8	10750	24014	46	152	28	42	131	22
CARAS-SEVERIN	23634	1,2	8366	14880	42	106	38	65	137	33
CALARASI	19487	1,0	6085	13102	22	87	18	77	96	38
CLUJ	89535	4,6	23977	64985	63	153	52	41	264	2
CONSTANTA	80553	4,2	16498	63114	89	207	51	51	543	3
COVASNA	16581	0,9	6196	10110	41	69	24	32	109	41
DAMBOVITA	36074	1,9	16450	19194	32	138	30	75	155	20
DOLJ	50807	2,6	11482	38817	39	167	40	58	203	9
GALATI	45835	2,4	10514	34925	35	137	30	51	143	16
GIURGIU	16056	0,8	3946	11767	16	85	23	109	110	42
GORJ	22799	1,2	5861	16493	27	184	51	83	100	34
HARGHITA	30188	1,6	12981	16755	64	90	24	43	231	26
HUNEDOARA	39249	2,0	10759	27953	33	83	42	94	285	18
IALOMITA	18047	0,9	6985	10800	27	83	15	46	91	40
IASI	63108	3,3	19472	42933	88	166	34	71	344	6
MARAMURES	49178	2,5	19956	28849	43	128	38	41	123	11
MEHEDINTI	21568	1,1	7423	13892	19	89	20	27	98	36
MURES	48559	2,5	18524	29577	68	158	30	34	168	12
NEAMT	41669	2,2	15576	25636	66	165	30	30	166	17
OLT	26927	1,4	10513	16010	27	164	26	64	123	27
PRAHOVA	64570	3,3	20708	43217	67	182	51	73	272	5
SALAJ	19285	1,0	7772	11251	41	110	19	28	64	39
SATU MARE	32890	1,7	11283	21277	41	94	19	42	134	23
SIBIU	38078	2,0	10412	27207	37	120	34	109	159	19
SUCEAVA	48273	2,5	22898	24779	73	206	31	65	221	14
TELEORMAN	22139	1,1	8002	13698	33	157	21	46	182	35
TIMIS	68555	3,5	12236	55649	69	143	38	69	351	4
TULCEA	19742	1,0	7205	12162	36	66	19	42	212	37
VASLUI	24354	1,3	11853	12176	22	110	16	41	136	29
VALCEA	31400	1,6	12661	18308	64	170	42	39	115	24
VRANCEA	23749	1,2	7571	15872	35	113	17	27	114	31
MUN. BUCURESTI	362853	18,7	30686	330620	64	142	115	105	1120	1
ILFOV	35303	1,8	4686	30287	31	94	21	13	171	21

Table no. 5

**Number of incorporations in the trade registers by counties and business categories  
during December 1990 – September 2009**

County	Total		out of which:							
			PF	companies: 1398061				RA	SC	APJ
	SNC	SCS		SRL	SA					
	No.	%	No.	No.	No.	No.	No.	No.	No.	
0	1	2	3	4	5	6	7	8	9	10
<b>Total ROMÂNIA</b>	<b>1936797</b>	<b>100,0</b>	<b>529739</b>	<b>32674</b>	<b>1605</b>	<b>1330160</b>	<b>33622</b>	<b>1386</b>	<b>2047</b>	<b>5564</b>
ALBA	31033	1,6	11271	890	11	18067	574	38	36	146
ARAD	47236	2,4	18089	54	13	28127	696	30	60	167
ARGES	49515	2,6	16152	107	15	32154	838	29	48	172
BACAU	48340	2,5	16645	1299	4	29301	742	35	154	160
BIHOR	59501	3,1	15766	126	47	42383	926	40	63	150
BISTRITA-NASAUD	24003	1,2	8829	146	22	14412	421	28	46	99
BOTOSANI	23661	1,2	11198	468	1	11342	459	21	40	132
BRASOV	60562	3,1	13914	239	20	45271	890	49	58	121
BRAILA	26738	1,4	7588	376	12	18062	530	29	42	99
BUZAU	35163	1,8	10750	3747	46	19802	592	28	46	152
CARAS-SEVERIN	23634	1,2	8366	117	9	14482	474	38	42	106
CALARASI	19487	1,0	6085	609	3	12302	361	18	22	87
CLUJ	89535	4,6	23977	2112	21	61819	1338	52	63	153
CONSTANTA	80553	4,2	16498	311	23	61852	1522	51	89	207
COVASNA	16581	0,9	6196	148	4	9793	306	24	41	69
DAMBOVITA	36074	1,9	16450	60	8	18856	500	30	32	138
DOLJ	50807	2,6	11482	1560	8	36602	909	40	39	167
GALATI	45835	2,4	10514	1574	6	32678	861	30	35	137
GIURGIU	16056	0,8	3946	35	8	11613	330	23	16	85
GORJ	22799	1,2	5861	29	1	16142	504	51	27	184
HARGHITA	30188	1,6	12981	62	7	16425	535	24	64	90
HUNEDOARA	39249	2,0	10759	1166	98	26374	694	42	33	83
IALOMITA	18047	0,9	6985	268	12	10303	354	15	27	83
IASI	63108	3,3	19472	507	111	41700	1030	34	88	166
MARAMURES	49178	2,5	19956	1927	23	26458	605	38	43	128
MEHEDINTI	21568	1,1	7423	427	3	13246	341	20	19	89
MURES	48559	2,5	18524	37	34	29025	683	30	68	158
NEAMT	41669	2,2	15576	3293	30	21825	684	30	66	165
OLT	26927	1,4	10513	1611	1	14082	503	26	27	164
PRAHOVA	64570	3,3	20708	3122	15	39495	930	51	67	182
SALAJ	19285	1,0	7772	600	4	10440	299	19	41	110
SATU MARE	32890	1,7	11283	283	9	20680	481	19	41	94
SIBIU	38078	2,0	10412	778	49	25970	678	34	37	120
SUCEAVA	48273	2,5	22898	438	8	24021	598	31	73	206
TELEORMAN	22139	1,1	8002	272	399	12823	432	21	33	157
TIMIS	68555	3,5	12236	616	33	54136	1284	38	69	143
TULCEA	19742	1,0	7205	1363	114	10455	484	19	36	66
VASLUI	24354	1,3	11853	90	13	11827	423	16	22	110
VALCEA	31400	1,6	12661	364	6	17587	506	42	64	170
VRANCEA	23749	1,2	7571	356	10	15182	465	17	35	113
MUN. BUCURESTI	362853	18,7	30686	1038	312	323310	7186	115	64	142
ILFOV	35303	1,8	4686	49	32	29736	654	21	31	94

Table no. 6

**Operations performed in the trade registers by counties and categories of registration in the month of September 2009**

County	Total of operations carried on		out of which:					
			New incorporations		Changes in statutory documents		Strike off companies	
	No.	%	No.	%	No.	%	No.	%
0	1	2	3	4	5	6	9	10
<b>Total ROMÂNIA</b>	<b>79988</b>	<b>100,0</b>	<b>7022</b>	<b>8,8</b>	<b>67046</b>	<b>83,8</b>	<b>5920</b>	<b>7,4</b>
ALBA	1462	100,0	154	10,5	1170	80,0	138	9,4
ARAD	2439	100,0	174	7,1	2030	83,2	235	9,6
ARGES	1682	100,0	154	9,2	1376	81,8	152	9,0
BACAU	3574	100,0	209	5,8	2571	71,9	794	22,2
BIHOR	2984	100,0	326	10,9	2363	79,2	295	9,9
BISTRITA-NASAUD	1078	100,0	168	15,6	841	78,0	69	6,4
BOTOSANI	476	100,0	69	14,5	379	79,6	28	5,9
BRASOV	2691	100,0	233	8,7	2332	86,7	126	4,7
BRAILA	1224	100,0	170	13,9	932	76,1	122	10,0
BUZAU	1598	100,0	146	9,1	1368	85,6	84	5,3
CARAS-SEVERIN	1283	100,0	106	8,3	943	73,5	234	18,2
CALARASI	788	100,0	77	9,8	678	86,0	33	4,2
CLUJ	3435	100,0	196	5,7	3097	90,2	142	4,1
CONSTANTA	4520	100,0	338	7,5	3944	87,3	238	5,3
COVASNA	742	100,0	71	9,6	628	84,6	43	5,8
DAMBOVITA	1247	100,0	169	13,6	980	78,6	98	7,9
DOLJ	3087	100,0	262	8,5	2649	85,8	176	5,7
GALATI	2461	100,0	195	7,9	1925	78,2	341	13,9
GIURGIU	612	100,0	93	15,2	493	80,6	26	4,2
GORJ	1070	100,0	103	9,6	967	90,4		
HARGHITA	1154	100,0	87	7,5	965	83,6	102	8,8
HUNEDOARA	2393	100,0	203	8,5	2045	85,5	145	6,1
IALOMITA	759	100,0	73	9,6	660	87,0	26	3,4
IASI	2585	100,0	284	11,0	2185	84,5	116	4,5
MARAMURES	2121	100,0	227	10,7	1798	84,8	96	4,5
MEHEDINTI	846	100,0	119	14,1	689	81,4	38	4,5
MURES	2059	100,0	153	7,4	1774	86,2	132	6,4
NEAMT	1873	100,0	151	8,1	1641	87,6	81	4,3
OLT	873	100,0	102	11,7	719	82,4	52	6,0
PRAHOVA	2110	100,0	208	9,9	1574	74,6	328	15,5
SALAJ	1080	100,0	95	8,8	932	86,3	53	4,9
SATU MARE	1625	100,0	139	8,6	1362	83,8	124	7,6
SIBIU	1499	100,0	211	14,1	1141	76,1	147	9,8
SUCEAVA	2421	100,0	159	6,6	2134	88,1	128	5,3
TELEORMAN	914	100,0	138	15,1	741	81,1	35	3,8
TIMIS	1547	100,0	194	12,5	1228	79,4	125	8,1
TULCEA	749	100,0	70	9,3	651	86,9	28	3,7
VASLUI	1328	100,0	120	9,0	1139	85,8	69	5,2
VALCEA	1403	100,0	112	8,0	1162	82,8	129	9,2
VRANCEA	896	100,0	113	12,6	731	81,6	52	5,8
MUN. BUCURESTI	10180	100,0	556	5,5	9104	89,4	520	5,1
ILFOV	1120	100,0	95	8,5	1005	89,7	20	1,8

Table no.7

**Number of incorporations in the trade registers by counties and capital sources in the month of September 2009**

County	Total		out of which:						Rnking by: *	
			Private capital				State majority capital			Mixed capital
			out of which:				out of which:			(state+priva
			PF	Companies	SC	APJ	RA	Companie s		Companie s
No.	%	No.	No.	No.		No.	No.	No.		
0	1	2	3	4	5	6	7	8	9	
<b>Total ROMÂNIA</b>	<b>7022</b>	<b>100,0</b>	<b>4590</b>	<b>2393</b>	<b>3</b>	<b>33</b>		<b>3</b>		<b>X</b>
ALBA	154	2,2	95	59						20
ARAD	174	2,5	108	63		3				15
ARGES	154	2,2	90	63		1				21
BACAU	209	3,0	133	76						9
BIHOR	326	4,6	223	101		2				3
BISTRITA-NASAUD	168	2,4	118	49		1				18
BOTOSANI	69	1,0	61	8						42
BRASOV	233	3,3	155	76		2				6
BRAILA	170	2,4	93	76		1				16
BUZAU	146	2,1	72	72		2				24
CARAS-SEVERIN	106	1,5	50	56						31
CALARASI	77	1,1	47	30						38
CLUJ	196	2,8	170	25	1					12
CONSTANTA	338	4,8	136	202						2
COVASNA	71	1,0	53	18						40
DAMBOVITA	169	2,4	87	81		1				17
DOLJ	262	3,7	115	145		2				5
GALATI	195	2,8	134	60		1				13
GIURGIU	93	1,3	27	64		2				36
GORJ	103	1,5	58	44	1					32
HARGHITA	87	1,2	83	4						37
HUNEDOARA	203	2,9	111	90		1		1		11
IALOMITA	73	1,0	36	36		1				39
IASI	284	4,0	225	58	1					4
MARAMURES	227	3,2	151	75				1		7
MEHEDINTI	119	1,7	71	48						28
MURES	153	2,2	121	31		1				22
NEAMT	151	2,2	93	58						23
OLT	102	1,5	53	49						33
PRAHOVA	208	3,0	180	28						10
SALAJ	95	1,4	66	27		2				34
SATU MARE	139	2,0	61	73		5				25
SIBIU	211	3,0	133	78						8
SUCEAVA	159	2,3	90	69						19
TELEORMAN	138	2,0	73	63		2				26
TIMIS	194	2,8	142	50		2				14
TULCEA	70	1,0	43	27						41
VASLUI	120	1,7	82	37		1				27
VALCEA	112	1,6	73	38				1		30
VRANCEA	113	1,6	88	25						29
MUN. BUCURESTI	556	7,9	531	25						1
ILFOV	95	1,4	59	36						35

\*) The total number of incorporations (col 1)

\*\*\* Less than 0,01%

Table no.8

**Number of incorporations in the trade registers by counties and business categories in the month of September 2009**

County	Total		out of which:						APJ	
			PF	companies: 2396				RA		SC
	SNC	SCS		SRL	SA					
	No.	%	No.	No.	No.	No.	No.	No.		
0	1	2	3	4	5	6	7	8	9	
<b>Total ROMÂNIA</b>	<b>7022</b>	<b>100,0</b>	<b>4590</b>			<b>2386</b>	<b>10</b>		<b>3</b>	<b>33</b>
ALBA	154	2,2	95			59				
ARAD	174	2,5	108			63				3
ARGES	154	2,2	90			63				1
BACAU	209	3,0	133			76				
BIHOR	326	4,6	223			100	1			2
BISTRITA-NASAUD	168	2,4	118			49				1
BOTOSANI	69	1,0	61			8				
BRASOV	233	3,3	155			75	1			2
BRAILA	170	2,4	93			74	2			1
BUZAU	146	2,1	72			72				2
CARAS-SEVERIN	106	1,5	50			56				
CALARASI	77	1,1	47			30				
CLUJ	196	2,8	170			24	1		1	
CONSTANTA	338	4,8	136			202				
COVASNA	71	1,0	53			18				
DAMBOVITA	169	2,4	87			81				1
DOLJ	262	3,7	115			145				2
GALATI	195	2,8	134			60				1
GIURGIU	93	1,3	27			64				2
GORJ	103	1,5	58			44			1	
HARGHITA	87	1,2	83			4				
HUNEDOARA	203	2,9	111			90	1			1
IALOMITA	73	1,0	36			36				1
IASI	284	4,0	225			57	1		1	
MARAMURES	227	3,2	151			76				
MEHEDINTI	119	1,7	71			48				
MURES	153	2,2	121			31				1
NEAMT	151	2,2	93			58				
OLT	102	1,5	53			49				
PRAHOVA	208	3,0	180			28				
SALAJ	95	1,4	66			27				2
SATU MARE	139	2,0	61			73				5
SIBIU	211	3,0	133			76	2			
SUCEAVA	159	2,3	90			69				
TELEORMAN	138	2,0	73			63				2
TIMIS	194	2,8	142			50				2
TULCEA	70	1,0	43			27				
VASLUI	120	1,7	82			37				1
VALCEA	112	1,6	73			39				
VRANCEA	113	1,6	88			25				
MUN. BUCURESTI	556	7,9	531			24	1			
ILFOV	95	1,4	59			36				

Table no. 9

**Number of incorporations in the trade registers by domains of activity and business categories in the month of September 2009**

CAE N segment	Field of activity	Total		out of which:								
				PF	companies: 2396				RA	SC	APJ	
		SNC	SCS		SRL	SA						
		No.	%	No.	No.	No.	No.	No.	No.	No.		
0	1	2	3	4	5	6	7	8	9	10	11	
	<b>Total ROMÂNIA</b>	<b>7022</b>	<b>100,0</b>	<b>4590</b>			<b>2386</b>	<b>10</b>			<b>3</b>	<b>33</b>
1	Agriculture, hunting and related service activities	606	8,6	477			110				2	17
2	Forestry and logging	35	0,5	14			21					
3	Fishing and aquaculture	20	0,3	15			5					
5	Mining of hard and brown coal											
6	Extraction of crude petroleum and natural gas											
7	Mining of metal ores											
8	Other mining and quarrying	7	0,1				7					
9	Mining support service activities	1	0,0				1					
10	Manufacture of food products	81	1,2	38			42					1
11	Manufacture of beverages	20	0,3	16			4					
12	Manufacture of tobacco products											
13	Manufacture of textiles	15	0,2	9			6					
14	Manufacture of wearing apparel	49	0,7	31			17	1				
15	Tanning and dressing of leather; manufacture of luggage, handbags, saddlery, harness and footwear; dressing and dyeing of fur	10	0,1	5			5					
16	Manufacture of wood and of products of wood and cork, except furniture; manufacture of articles of straw and plaiting materials	41	0,6	21			20					
17	Manufacture of paper and paper products	3	0,0	3								
18	Printing and reproduction of recorded media	10	0,1	5			5					
19	Manufacture of coke and refined petroleum products											
20	Manufacture of chemicals and chemical products	3	0,0				3					
21	Manufacture of basic pharmaceutical products and pharmaceutical preparations	1	0,0	1								
22	Manufacture of rubber and plastic products	16	0,2	4			12					
23	Manufacture of other non-metallic mineral products	25	0,4	12			13					
24	Manufacture of basic metals	3	0,0				3					
25	Manufacture of fabricated metal products, except machinery and equipment	63	0,9	37			26					
26	Manufacture of computer, electronic and optical products											
27	Manufacture of electrical equipment	3	0,0				3					
28	Manufacture of machinery and equipment n.e.c.	5	0,1	1			4					
29	Manufacture of motor vehicles, trailers and semi-trailers	1	0,0				1					
30	Manufacture of other transport equipment	8	0,1	1			7					
31	Manufacture of furniture	35	0,5	23			12					
32	Other manufacturing	34	0,5	24			10					
33	Repair and installation of machinery and equipment	25	0,4	17			8					
35	Electricity, gas, steam and air conditioning supply	24	0,3				23	1				
36	Water collection, treatment and supply	3	0,0				2	1				
37	Sewerage	6	0,1	1			5					
38	Waste collection, treatment and disposal activities; materials recovery	28	0,4	1			27					
39	Remediation activities and other waste management services											
41	Construction of buildings	777	11,1	52			723	2				
42	Civil engineering	53	0,8	2			51					
43	Specialised construction activities	526	7,5	122			403	1				
45	Wholesale and retail trade and repair of motor vehicles and motorcycles	270	3,8	39			231					
46	Wholesale trade, except of motor vehicles and motorcycles	1057	15,1	207			850					14
47	Retail trade, except of motor vehicles and motorcycles	1759	25,0	590			1165	3		1		
49	Land transport and transport via pipelines	551	7,8	198			353					
50	Water transport	5	0,1	1			4					



Table no. 10

**Number of incorporated trading companies and the value of the subscribed share capital, by counties, in the month of September 2009**

County	Total registered companies		Subscribed capital		Average subscribed capital on company
	No.	%	thousand Lei	%	thousand Lei
0	1	2	3	4	5
Total ROMÂNIA	2396	100,0	544610,5	100,0	227,3
ALBA	59	2,5	196,6	0,0	3,3
ARAD	63	2,6	26,3	***	0,4
ARGES	63	2,6	104,2	0,0	1,7
BACAU	76	3,2	855,4	0,2	11,3
BIHOR	101	4,2	162,8	0,0	1,6
BISTRITA-NASAUD	49	2,0	17,3	***	0,4
BOTOSANI	8	0,3	3,4	***	0,4
BRASOV	76	3,2	76,7	0,0	1,0
BRAILA	76	3,2	5545,2	1,0	73,0
BUZAU	72	3,0	910,6	0,2	12,6
CARAS-SEVERIN	56	2,3	78,8	0,0	1,4
CALARASI	30	1,3	35,6	***	1,2
CLUJ	25	1,0	5,0	***	0,2
CONSTANTA	202	8,4	116,6	0,0	0,6
COVASNA	18	0,8	4,7	***	0,3
DAMBOVITA	81	3,4	132,3	0,0	1,6
DOLJ	145	6,1	584,5	0,1	4,0
GALATI	60	2,5	16,0	***	0,3
GIURGIU	64	2,7	28,8	***	0,5
GORJ	44	1,8	10,4	***	0,2
HARGHITA	4	0,2	86,6	0,0	21,7
HUNEDOARA	91	3,8	125,6	0,0	1,4
IALOMITA	36	1,5	31,0	***	0,9
IASI	58	2,4	500065,6	91,8	8621,8
MARAMURES	76	3,2	153,5	0,0	2,0
MEHEDINTI	48	2,0	1520,7	0,3	31,7
MURES	31	1,3	6,2	***	0,2
NEAMT	58	2,4	647,4	0,1	11,2
OLT	49	2,0	12,4	***	0,3
PRAHOVA	28	1,2	2427,0	0,4	86,7
SALAJ	27	1,1	6,8	***	0,3
SATU MARE	73	3,0	161,8	0,0	2,2
SIBIU	78	3,3	2654,3	0,5	34,0
SUCEAVA	69	2,9	34,2	***	0,5
TELEORMAN	63	2,6	15,2	***	0,2
TIMIS	50	2,1	388,9	0,1	7,8
TULCEA	27	1,1	190,4	0,0	7,1
VASLUI	37	1,5	8,2	***	0,2
VALCEA	39	1,6	42,4	***	1,1
VRANCEA	25	1,0	7,0	***	0,3
MUN. BUCURESTI	25	1,0	1771,4	0,3	70,9
ILFOV	36	1,5	25342,6	4,7	704,0

*Note: The average does not include filials because according to the Law no.31/1990 they are not juridical persons*

\*\*\* Less than 0,01%

Table no. 11

**Number of incorporated trading companies and the value of the subscribed share capital by legal forms, in the month of September 2009**

Company type	Total registered companies		Subscribed capital		Average subscribed capital on company
	No.	%	thousand Lei	%	thousand Lei
0	1	2	3	4	5
<b>Total ROMÂNIA</b>	<b>2396</b>	<b>100,0</b>	<b>544610,5</b>	<b>100,0</b>	<b>227,9</b>
<b>SNC</b>					
<b>SCS</b>					
<b>SA</b>	10	0,4	507448,3	93,2	63431,0
<b>SRL</b>	2386	99,6	37162,2	6,8	15,6

**Note:** The average does not include filials because according to the Law no.31/1990 they are not juridical persons

\*\*\* Less than 0,01%

Diagram no.5

