



MINISTRY OF JUSTICE

THE NATIONAL TRADE REGISTER OFFICE

București, Bd. Unirii nr. 74, Bl. J3b, tronson II+III, sector 3; Telefon: +40 21 316.08.04, 316.08.10; Fax: +40 21 316.08.03; Cod poștal: 030837
Website: www.onrc.ro; E-mail: onrc@onrc.ro; Cod identificare Fiscală: 14942091

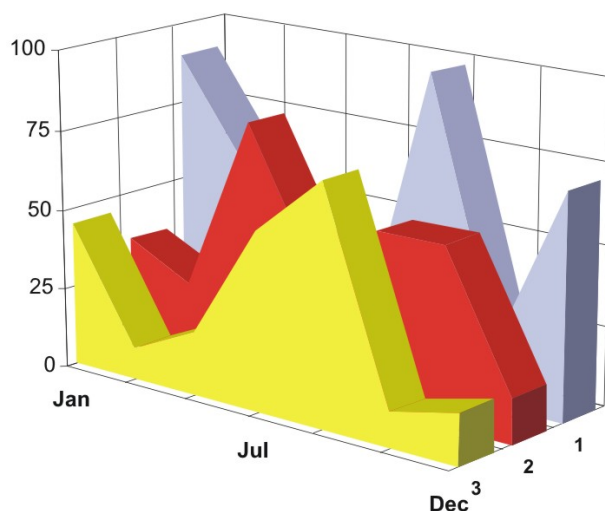
OPERATIONS IN THE CENTRAL TRADE REGISTER

STATISTIC SYNTHESIS

OF

RECORDS IN THE CENTRAL TRADE REGISTER

- 31st August 2009 - provisional data -



- ISSUE No. 213 -

**MINISTRY OF JUSTICE
THE NATIONAL TRADE REGISTER OFFICE**

- Operations such as incorporation of trading companies, submission of changes, and strike-off are carried out based on Law No.26/1990, as republished, Law No.31/1990, as republished and on the Methodological Norms no. P/608/1998.

- This work reflects the evolution of the operations with the Trade Register Office attached to Bucharest Law Court and the Trade Register Offices attached to County Law Courts.

- The data contained in the Central Trade Register refer to operations for which law sets out the obligation of being registered in the trade registers kept by the 42 trade register offices attached to law courts.

- | |
|---|
| <ul style="list-style-type: none">• <i>The content of this publication shall not be reproduced, partly or entirely, in original or modified form, and shall not be stored in a recovery system and shall not be transmitted in any form or by any means without prior written authorization of the Ministry of Justice – The National Trade Register Office.</i>• <i>The content of this publication December be used in articles, studies, books, as supporting or explanatory data only by clearly and accurately indicating the source.</i> |
|---|

CONTENTS

Page

1	Definitions	1
2.1	Data related to the period December 1990 –August 2009	3
<hr/>		
	Table no. 1 – Operations performed in the trade registers by categories of registration during December 1990 –August 2009, total by country and by counties, shares of counties in the total by country	3
	Table no. 2 – Operations performed in the trade registers by categories of registration during December 1990 –August 2009, total by country and counties, share of categories of operations in the total of each county	4
	Table no. 3 – Number and structure of incorporations in the trade registers during December 1990-August 2009	5
	Chart no. 1 – Structure by years of incorporations in the trade register	
	Table no. 4 – Number of incorporations in the trade registers by counties and capital sources during December 1990 - August 2009	6
	Table no. 5 – Number of incorporations in the trade registers by counties and business categories during December 1990 –August 2009	7
<hr/>		
2.2	Data related to August 2009	8
<hr/>		
	Table no. 6 – Operations performed in the trade registers by counties and categories of registrations in the month of August 2009	8
	Table no. 7 – Number of incorporations in the trade registers by counties and capital sources in the month of August 2009	9
	Table no. 8 – Number of incorporations in the trade registers by counties and business categories in the month of August 2009	10
	Table no. 9 –Number of incorporations in the trade registers by domains of activity and business categories in the month of August 2009	11-12
	Table no. 10 – Number of incorporated trading companies and the value of subscribed share capital, by counties, in the month of August 2009	13
	Table no. 11– Number of incorporated trading companies and the value of subscribed share capital by legal forms, in the month of August 2009	14
	Chart no. 5 – Average value of subscribed share capital by types of trading companies in the month of August 2009	14

Definitions

The Trade Register Office was established based on Law No. 26/1990, as republished and subsequently amended and supplemented, operates as an active institution since December 1990 and is twofold structured:

- at national level, represented by the National Trade Register Office organized under the authority of the Ministry of Justice
- at local level, represented by the 42 Trade Register Offices attached to Law Courts, organized under the subordination of the National Trade Register Office

Categories of persons liable to registration in the trade register:

- natural persons: authorized natural persons, individual enterprises and family enterprises currently carrying on trading activities;
 - legal persons represented by: Trading Companies, National Societies and Companies, National R&D Institutes, Autonomous Administrations, Co-operative Societies, Agricultural Co-operatives, Co-operative Organizations, Economic Interest Groupings, European Economic Interest Groupings, European Societies, European Co-operative Societies, branches of trading companies with legal establishment, operation and incorporation regime of trading company legal form under which they were incorporated.
- **Terms used in tables and charts**
- **Number of companies**, depending on the table, represents the number of trading companies incorporated during the reference period, the number of trading companies struck-off from the trade register. The following forms of organization are included: limited liability companies, joint-stock companies, limited partnerships by share, limited partnerships, general partnerships, and branches thereof.
 - **Value of subscribed share capital:**
 - **total, expressed in national currency:** the share capital value resulted by adding up the subscribed values (in cash and in kind) in national currency (lei)

➤ **Regions of economic development:**

<i>North-East:</i>	Suceava, Botoșani, Neamț, Iași, Bacău, Vaslui.
<i>South-East:</i>	Vrancea, Galați, Buzău, Brăila, Tulcea, Constanța.
<i>South-Muntenia:</i>	Argeș, Dâmbovița, Prahova, Teleorman, Giurgiu, Călărași, Ialomița.
<i>South-West Oltenia:</i>	Gorj, Vâlcea, Dolj, Mehedinți, Olt.
<i>West:</i>	Arad, Caraș-Severin, Hunedoara, Timiș.
<i>North-West:</i>	Bihor, Bistrița, Cluj, Satu Mare, Sălaj, Maramureș.
<i>Center:</i>	Alba, Brașov, Covasna, Harghita, Mureș, Sibiu.
<i>Bucharest-Ilfov:</i>	București, Ilfov.

NACE Code – The classification of economic activities in the national economy was approved by GO No. 656/1997, amended by Order No 601/2002 and Order no. 337/2007 of the President of the National Institute of Statistics, and complies with the international classification used in statistic reports and official documents. The activities are ranked by the harmonization principle, by sections, divisions, groups and classes.

Abbreviations

- **PF** - Natural Person; the following forms of organization are included in this category: natural persons and family associations registered until 25.04.2008, authorized natural persons, individual enterprises and family enterprises.
- **SNC** - General Partnership
- **SCS** - Limited Partnership
- **SCA** - Limited Partnership by Share
- **SA** - Joint-Stock Company
- **SRL** - Limited Liability Company
- **RA** - Autonomous Administration
- **APJ** - Other legal persons having the obligation to register in the trade register: National R&D Institutes, Economic Interest Groupings, European Economic Interest Groupings, European Societies, European Co-operative Societies, Agricultural Co-operatives, Co-operative Organizations.

Sources of Information:

The integrated IT system of the trade register is designed by The National Trade Register Office in compliance with the provisions of the related legislation in force. The source of information consists of the trade registers organized in computerized system, kept by the trade register offices attached to law courts.

Table no. 1

**Operations performed in the trade registers by categories of registration during
December 1990 – August 2009, total by country and by counties, share of
counties in the total by country**

Counties	Total of registered operations		out of which :					
			Registered companies		Changes in statutory documents		Strike off companies	
	No.	%	No.	%	No.	%	No.	%
0	1	2	3	4	7	8	11	12
Total ROMÂNIA	12342467	100,0	1929775	100,0	9813160	100,0	599532	100,0
ALBA	184542	1,5	30879	1,6	146691	1,5	6972	1,2
ARAD	284060	2,3	47062	2,4	224541	2,3	12457	2,1
ARGES	300707	2,4	49361	2,6	239891	2,4	11455	1,9
BACAU	279519	2,3	48131	2,5	217889	2,2	13499	2,3
BIHOR	372442	3,0	59175	3,1	296157	3,0	17110	2,9
BISTRITA-NASAUD	147436	1,2	23835	1,2	115996	1,2	7605	1,3
BOTOSANI	114406	0,9	23592	1,2	84078	0,9	6736	1,1
BRASOV	489851	4,0	60329	3,1	414690	4,2	14832	2,5
BRAILA	193461	1,6	26568	1,4	161903	1,6	4990	0,8
BUZAU	213578	1,7	35017	1,8	166371	1,7	12190	2,0
CARAS-SEVERIN	147189	1,2	23528	1,2	114052	1,2	9609	1,6
CALARASI	111156	0,9	19410	1,0	86135	0,9	5611	0,9
CLUJ	547863	4,4	89339	4,6	439341	4,5	19183	3,2
CONSTANTA	521661	4,2	80215	4,2	412296	4,2	29150	4,9
COVASNA	108168	0,9	16510	0,9	86279	0,9	5379	0,9
DAMBOVITA	179287	1,5	35905	1,9	128240	1,3	15142	2,5
DOLJ	327822	2,7	50545	2,6	262088	2,7	15189	2,5
GALATI	316902	2,6	45640	2,4	255414	2,6	15848	2,6
GIURGIU	97067	0,8	15963	0,8	75339	0,8	5765	1,0
GORJ	194960	1,6	22696	1,2	165057	1,7	7207	1,2
HARGHITA	182832	1,5	30101	1,6	146003	1,5	6728	1,1
HUNEDOARA	248620	2,0	39046	2,0	195017	2,0	14557	2,4
IALOMITA	115574	0,9	17974	0,9	90890	0,9	6710	1,1
IASI	404913	3,3	62824	3,3	326759	3,3	15330	2,6
MARAMURES	252475	2,0	48951	2,5	191005	1,9	12519	2,1
MEHEDINTI	129535	1,0	21449	1,1	99517	1,0	8569	1,4
MURES	347074	2,8	48406	2,5	282938	2,9	15730	2,6
NEAMT	269387	2,2	41518	2,2	211669	2,2	16200	2,7
OLT	151676	1,2	26825	1,4	114514	1,2	10337	1,7
PRAHOVA	418935	3,4	64362	3,3	335694	3,4	18879	3,1
SALAJ	106865	0,9	19190	1,0	81444	0,8	6231	1,0
SATU MARE	191208	1,5	32751	1,7	146955	1,5	11502	1,9
SIBIU	274038	2,2	37867	2,0	225622	2,3	10549	1,8
SUCEAVA	293335	2,4	48114	2,5	226524	2,3	18697	3,1
TELEORMAN	133174	1,1	22001	1,1	105847	1,1	5326	0,9
TIMIS	404582	3,3	68361	3,5	316756	3,2	19465	3,2
TULCEA	148260	1,2	19672	1,0	122431	1,2	6157	1,0
VASLUI	153312	1,2	24234	1,3	119630	1,2	9448	1,6
VALCEA	187623	1,5	31288	1,6	145653	1,5	10682	1,8
VRANCEA	150398	1,2	23636	1,2	121168	1,2	5594	0,9
MUN. BUCURESTI	2453944	19,9	362297	18,8	1965168	20,0	126479	21,1
ILFOV	192630	1,6	35208	1,8	149508	1,5	7914	1,3

Table no. 2

Operations performed in the trade registers during December 1990 – August 2009, total by country and counties, share of categories of operations in the total of each county

Counties	Total of registered operations		out of which :					
			Registered companies		Changes in statutory documents		Strike off companies	
	No.	%	No.	%	No.	%	No.	%
0	1	2	3	4	7	8	11	12
Total ROMÂNIA	12342467	100,0	1929775	15,6	9813160	79,5	599532	4,9
ALBA	184542	100,0	30879	16,7	146691	79,5	6972	3,8
ARAD	284060	100,0	47062	16,6	224541	79,0	12457	4,4
ARGES	300707	100,0	49361	16,4	239891	79,8	11455	3,8
BACAU	279519	100,0	48131	17,2	217889	78,0	13499	4,8
BIHOR	372442	100,0	59175	15,9	296157	79,5	17110	4,6
BISTRITA-NASAUD	147436	100,0	23835	16,2	115996	78,7	7605	5,2
BOTOSANI	114406	100,0	23592	20,6	84078	73,5	6736	5,9
BRASOV	489851	100,0	60329	12,3	414690	84,7	14832	3,0
BRAILA	193461	100,0	26568	13,7	161903	83,7	4990	2,6
BUZAU	213578	100,0	35017	16,4	166371	77,9	12190	5,7
CARAS-SEVERIN	147189	100,0	23528	16,0	114052	77,5	9609	6,5
CALARASI	111156	100,0	19410	17,5	86135	77,5	5611	5,0
CLUJ	547863	100,0	89339	16,3	439341	80,2	19183	3,5
CONSTANTA	521661	100,0	80215	15,4	412296	79,0	29150	5,6
COVASNA	108168	100,0	16510	15,3	86279	79,8	5379	5,0
DAMBOVITA	179287	100,0	35905	20,0	128240	71,5	15142	8,4
DOLJ	327822	100,0	50545	15,4	262088	79,9	15189	4,6
GALATI	316902	100,0	45640	14,4	255414	80,6	15848	5,0
GIURGIU	97067	100,0	15963	16,4	75339	77,6	5765	5,9
GORJ	194960	100,0	22696	11,6	165057	84,7	7207	3,7
HARGHITA	182832	100,0	30101	16,5	146003	79,9	6728	3,7
HUNEDOARA	248620	100,0	39046	15,7	195017	78,4	14557	5,9
IALOMITA	115574	100,0	17974	15,6	90890	78,6	6710	5,8
IASI	404913	100,0	62824	15,5	326759	80,7	15330	3,8
MARAMURES	252475	100,0	48951	19,4	191005	75,7	12519	5,0
MEHEDINTI	129535	100,0	21449	16,6	99517	76,8	8569	6,6
MURES	347074	100,0	48406	13,9	282938	81,5	15730	4,5
NEAMT	269387	100,0	41518	15,4	211669	78,6	16200	6,0
OLT	151676	100,0	26825	17,7	114514	75,5	10337	6,8
PRAHOVA	418935	100,0	64362	15,4	335694	80,1	18879	4,5
SALAJ	106865	100,0	19190	18,0	81444	76,2	6231	5,8
SATU MARE	191208	100,0	32751	17,1	146955	76,9	11502	6,0
SIBIU	274038	100,0	37867	13,8	225622	82,3	10549	3,8
SUCEAVA	293335	100,0	48114	16,4	226524	77,2	18697	6,4
TELEORMAN	133174	100,0	22001	16,5	105847	79,5	5326	4,0
TIMIS	404582	100,0	68361	16,9	316756	78,3	19465	4,8
TULCEA	148260	100,0	19672	13,3	122431	82,6	6157	4,2
VASLUI	153312	100,0	24234	15,8	119630	78,0	9448	6,2
VALCEA	187623	100,0	31288	16,7	145653	77,6	10682	5,7
VRANCEA	150398	100,0	23636	15,7	121168	80,6	5594	3,7
MUN. BUCURESTI	2453944	100,0	362297	14,8	1965168	80,1	126479	5,2
ILFOV	192630	100,0	35208	18,3	149508	77,6	7914	4,1

Table no.3

Number and structure of incorporations in the trade registers during December 1990 - August 2009

Period (year, month)	Registered companies		Percentage	
	No.	%	%	
0	1	2	3	
Total, 31 December 2008, out of which	1929775	100,00		
Year 1990	81	0,00		
Year 1991	95840	4,97		
Year 1992	137456	7,12		
Year 1993	117078	6,07		
Year 1994	137445	7,12		
Year 1995	65479	3,39		
Year 1996	62089	3,22		
Year 1997	55663	2,88		
Year 1998	63878	3,31		
Year 1999	57197	2,96		
Year 2000	57291	2,97		
Year 2001	61265	3,17		
Year 2002	84780	4,39		
Year 2003	123582	6,40		
Year 2004	144284	7,48		
Year 2005	159464	8,26		
Year 2006	135371	7,01		
Year 2007	144728	7,50		
Year 2008	144177	7,47		
Year 2009 (I - XII) out of which :	82627			110,5
January	9880			12,0
February	13630			16,5
March	12714			15,4
April	9131			11,1
May	8870			10,7
June	8714			10,5
July	9516			10,5
August	10172			11,5

Note: Column 2 reveals the annual structure of incorporations; column 3 reveals the structure by months during the current year.

Diagram no.1

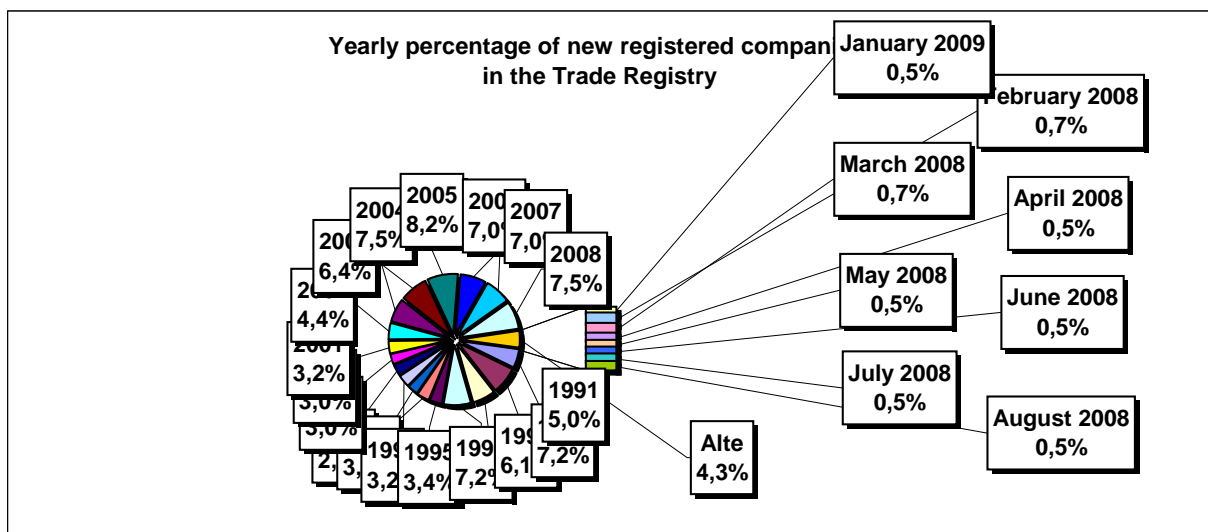


Table no. 4

**Number of incorporations in the trade registers by counties and capital sources during
December 1990 - August 2009**

Counties	Total		out of which:						Ranking by: *	
			Private capital				State majority capital			Mixed capital (state+private)
			out of which:				out of which:			
			PF	Companies	SC	APJ	RA	Companies		Companies
No.	%	No.	No.	No.	No.	No.	No.	No.		
0	1	2	3	4	5	6	6	7	8	9
Total ROMÂNIA	1929775	100,0	525149	1384646	2044	5531	1386	2387	8631	X
ALBA	30879	1,6	11176	19266	36	146	38	47	170	25
ARAD	47062	2,4	17981	28450	60	164	30	41	336	15
ARGES	49361	2,6	16062	32869	48	171	29	30	152	10
BACAU	48131	2,5	16512	31002	154	160	35	42	226	13
BIHOR	59175	3,1	15543	43011	63	148	40	62	309	8
BISTRITA-NASAUD	23835	1,2	8711	14814	46	98	28	29	109	30
BOTOSANI	23592	1,2	11137	11969	40	132	21	174	119	32
BRASOV	60329	3,1	13759	46086	58	119	49	87	172	7
BRAILA	26568	1,4	7495	18692	42	98	29	45	167	28
BUZAU	35017	1,8	10678	23942	46	150	28	42	131	22
CARAS-SEVERIN	23528	1,2	8316	14824	42	106	38	65	137	33
CALARASI	19410	1,0	6038	13072	22	87	18	77	96	38
CLUJ	89339	4,6	23807	64960	62	153	52	41	264	2
CONSTANTA	80215	4,2	16362	62912	89	207	51	51	543	3
COVASNA	16510	0,9	6143	10092	41	69	24	32	109	41
DAMBOVITA	35905	1,9	16363	19113	32	137	30	75	155	20
DOLJ	50545	2,6	11367	38672	39	165	40	58	203	9
GALATI	45640	2,4	10380	34865	35	136	30	51	143	16
GIURGIU	15963	0,8	3919	11703	16	83	23	109	110	42
GORJ	22696	1,2	5803	16449	26	184	51	83	100	34
HARGHITA	30101	1,6	12898	16751	64	90	24	43	231	26
HUNEDOARA	39046	2,0	10648	27863	33	82	42	93	285	18
IALOMITA	17974	0,9	6949	10764	27	82	15	46	91	40
IASI	62824	3,3	19247	42875	87	166	34	71	344	6
MARAMURES	48951	2,5	19805	28774	43	128	38	40	123	11
MEHEDINTI	21449	1,1	7352	13844	19	89	20	27	98	36
MURES	48406	2,5	18403	29546	68	157	30	34	168	12
NEAMT	41518	2,2	15483	25578	66	165	30	30	166	17
OLT	26825	1,4	10460	15961	27	164	26	64	123	27
PRAHOVA	64362	3,3	20528	43189	67	182	51	73	272	5
SALAJ	19190	1,0	7706	11224	41	108	19	28	64	39
SATU MARE	32751	1,7	11222	21204	41	89	19	42	134	23
SIBIU	37867	2,0	10279	27129	37	120	34	109	159	19
SUCEAVA	48114	2,5	22808	24710	73	206	31	65	221	14
TELEORMAN	22001	1,1	7929	13635	33	155	21	46	182	35
TIMIS	68361	3,5	12094	55599	69	141	38	69	351	4
TULCEA	19672	1,0	7162	12135	36	66	19	42	212	37
VASLUI	24234	1,3	11771	12139	22	109	16	41	136	29
VALCEA	31288	1,6	12588	18270	64	170	42	38	115	24
VRANCEA	23636	1,2	7483	15847	35	113	17	27	114	31
MUN. BUCURESTI	362297	18,8	30155	330595	64	142	115	105	1120	1
ILFOV	35208	1,8	4627	30251	31	94	21	13	171	21

*) The total number of incorporations (col 1)

Table no. 5

**Number of incorporations in the trade registers by counties and business categories
during December 1990 – August 2009**

County	Total		out of which:							APJ
			PF	companies: 1395665				RA	SC	
	SNC	SCS		SRL	SA	No.	No.			
	No.	%	No.	No.	No.			No.	No.	
0	1	2	3	4	5	6	7	8	9	10
Total ROMÂNIA	1929775	100,0	525149	32674	1605	1327774	33612	1386	2044	5531
ALBA	30879	1,6	11176	890	11	18008	574	38	36	146
ARAD	47062	2,4	17981	54	13	28064	696	30	60	164
ARGES	49361	2,6	16062	107	15	32091	838	29	48	171
BACAU	48131	2,5	16512	1299	4	29225	742	35	154	160
BIHOR	59175	3,1	15543	126	47	42283	925	40	63	148
BISTRITA-NASAUD	23835	1,2	8711	146	22	14363	421	28	46	98
BOTOSANI	23592	1,2	11137	468	1	11334	459	21	40	132
BRASOV	60329	3,1	13759	239	20	45196	889	49	58	119
BRAILA	26568	1,4	7495	376	12	17988	528	29	42	98
BUZAU	35017	1,8	10678	3747	46	19730	592	28	46	150
CARAS-SEVERIN	23528	1,2	8316	117	9	14426	474	38	42	106
CALARASI	19410	1,0	6038	609	3	12272	361	18	22	87
CLUJ	89339	4,6	23807	2112	21	61795	1337	52	62	153
CONSTANTA	80215	4,2	16362	311	23	61650	1522	51	89	207
COVASNA	16510	0,9	6143	148	4	9775	306	24	41	69
DAMBOVITA	35905	1,9	16363	60	8	18775	500	30	32	137
DOLJ	50545	2,6	11367	1560	8	36457	909	40	39	165
GALATI	45640	2,4	10380	1574	6	32618	861	30	35	136
GIURGIU	15963	0,8	3919	35	8	11549	330	23	16	83
GORJ	22696	1,2	5803	29	1	16098	504	51	26	184
HARGHITA	30101	1,6	12898	62	7	16421	535	24	64	90
HUNEDOARA	39046	2,0	10648	1166	98	26284	693	42	33	82
IALOMITA	17974	0,9	6949	268	12	10267	354	15	27	82
IASI	62824	3,3	19247	507	111	41643	1029	34	87	166
MARAMURES	48951	2,5	19805	1927	23	26382	605	38	43	128
MEHEDINTI	21449	1,1	7352	427	3	13198	341	20	19	89
MURES	48406	2,5	18403	37	34	28994	683	30	68	157
NEAMT	41518	2,2	15483	3293	30	21767	684	30	66	165
OLT	26825	1,4	10460	1611	1	14033	503	26	27	164
PRAHOVA	64362	3,3	20528	3122	15	39467	930	51	67	182
SALAJ	19190	1,0	7706	600	4	10413	299	19	41	108
SATU MARE	32751	1,7	11222	283	9	20607	481	19	41	89
SIBIU	37867	2,0	10279	778	49	25894	676	34	37	120
SUCEAVA	48114	2,5	22808	438	8	23952	598	31	73	206
TELEORMAN	22001	1,1	7929	272	399	12760	432	21	33	155
TIMIS	68361	3,5	12094	616	33	54086	1284	38	69	141
TULCEA	19672	1,0	7162	1363	114	10428	484	19	36	66
VASLUI	24234	1,3	11771	90	13	11790	423	16	22	109
VALCEA	31288	1,6	12588	364	6	17548	506	42	64	170
VRANCEA	23636	1,2	7483	356	10	15157	465	17	35	113
MUN. BUCURESTI	362297	18,8	30155	1038	312	323286	7185	115	64	142
ILFOV	35208	1,8	4627	49	32	29700	654	21	31	94

Table no. 6

Operations performed in the trade registers by counties and categories of registration in the month of August 2009

County	Total of operations carried on		out of which:					
			New incorporations		Changes in statutory documents		Strike off companies	
	No.	%	No.	%	No.	%	No.	%
0	1	2	3	4	5	6	9	10
Total ROMÂNIA	117030	100,0	10172	8,7	100442	85,8	6416	5,5
ALBA	2610	100,0	317	12,1	1972	75,6	321	12,3
ARAD	2747	100,0	219	8,0	2448	89,1	80	2,9
ARGES	2502	100,0	277	11,1	1879	75,1	346	13,8
BACAU	3296	100,0	312	9,5	2825	85,7	159	4,8
BIHOR	3116	100,0	235	7,5	2748	88,2	133	4,3
BISTRITA-NASAUD	1963	100,0	375	19,1	1422	72,4	166	8,5
BOTOSANI	669	100,0	91	13,6	549	82,1	29	4,3
BRASOV	4828	100,0	264	5,5	4303	89,1	261	5,4
BRAILA	467	100,0	138	29,6	296	63,4	33	7,1
BUZAU	2205	100,0	305	13,8	1825	82,8	75	3,4
CARAS-SEVERIN	907	100,0	141	15,5	738	81,4	28	3,1
CALARASI	950	100,0	123	12,9	792	83,4	35	3,7
CLUJ	5673	100,0	424	7,5	5129	90,4	120	2,1
CONSTANTA	4774	100,0	344	7,2	4234	88,7	196	4,1
COVASNA	802	100,0	90	11,2	672	83,8	40	5,0
DAMBOVITA	1820	100,0	240	13,2	1347	74,0	233	12,8
DOLJ	3818	100,0	221	5,8	3464	90,7	133	3,5
GALATI	3137	100,0	235	7,5	2633	83,9	269	8,6
GIURGIU	916	100,0	133	14,5	746	81,4	37	4,0
GORJ	1337	100,0	110	8,2	1164	87,1	63	4,7
HARGHITA	1752	100,0	212	12,1	1403	80,1	137	7,8
HUNEDOARA	2481	100,0	232	9,4	2168	87,4	81	3,3
IALOMITA	1036	100,0	91	8,8	916	88,4	29	2,8
IASI	3739	100,0	367	9,8	3177	85,0	195	5,2
MARAMURES	2457	100,0	288	11,7	2066	84,1	103	4,2
MEHEDINTI	984	100,0	130	13,2	807	82,0	47	4,8
MURES	3088	100,0	227	7,4	2736	88,6	125	4,0
NEAMT	2608	100,0	163	6,3	2164	83,0	281	10,8
OLT	1877	100,0	178	9,5	1273	67,8	426	22,7
PRAHOVA	3293	100,0	261	7,9	2792	84,8	240	7,3
SALAJ	1142	100,0	153	13,4	945	82,7	44	3,9
SATU MARE	1866	100,0	179	9,6	1638	87,8	49	2,6
SIBIU	1720	100,0	203	11,8	1408	81,9	109	6,3
SUCEAVA	5448	100,0	194	3,6	5064	93,0	190	3,5
TELEORMAN	714	100,0	136	19,0	551	77,2	27	3,8
TIMIS	3055	100,0	284	9,3	2515	82,3	256	8,4
TULCEA	1562	100,0	67	4,3	1393	89,2	102	6,5
VASLUI	1015	100,0	104	10,2	869	85,6	42	4,1
VALCEA	1964	100,0	229	11,7	1532	78,0	203	10,3
VRANCEA	1604	100,0	308	19,2	1222	76,2	74	4,6
MUN. BUCURESTI	22580	100,0	1294	5,7	20459	90,6	827	3,7
ILFOV	2508	100,0	278	11,1	2158	86,0	72	2,9

*) by effect of implementation of Law no. 314/2001, art.1 and art. 6

Table no.7

Number of incorporations in the trade registers by counties and capital sources in the month of August 2009

County	Total		out of which:						Rnking by: *	
			Private capital				State majority capital			Mixed capital (state+private)
			out of which:				out of which:			
			PF	Companies	SC	APJ	RA	Companies		Companies
No.	%	No.	No.	No.		No.	No.	No.		
0	1	2	3	4	5	6	7	8	9	
Total ROMÂNIA	10171	100,0	6393	3761	2	14			1	X
ALBA	317	3,1	267	49		1				6
ARAD	218	2,1	130	87		1				23
ARGES	277	2,7	195	82						13
BACAU	312	3,1	218	92	2					7
BIHOR	235	2,3	150	85						17
BISTRITA-NASAUD	375	3,7	341	34						3
BOTOSANI	91	0,9	72	19						39
BRASOV	265	2,6	135	130						14
BRAILA	138	1,4	83	55						32
BUZAU	305	3,0	235	70						9
CARAS-SEVERIN	141	1,4	99	41		1				31
CALARASI	123	1,2	76	46				1		36
CLUJ	424	4,2	270	153		1				2
CONSTANTA	344	3,4	168	176						5
COVASNA	90	0,9	74	16						41
DAMBOVITA	240	2,4	183	57						16
DOLJ	221	2,2	136	85						22
GALATI	235	2,3	136	99						18
GIURGIU	133	1,3	80	53						34
GORJ	110	1,1	68	42						37
HARGHITA	212	2,1	176	36						24
HUNEDOARA	232	2,3	146	86						19
IALOMITA	91	0,9	56	35						40
IASI	367	3,6	227	140						4
MARAMURES	288	2,8	201	86		1				10
MEHEDINTI	130	1,3	101	29						35
MURES	227	2,2	145	81		1				21
NEAMT	163	1,6	92	70		1				29
OLT	178	1,8	133	45						28
PRAHOVA	261	2,6	150	106		5				15
SALAJ	153	1,5	118	35						30
SATU MARE	179	1,8	130	49						27
SIBIU	203	2,0	137	66						25
SUCEAVA	194	1,9	114	80						26
TELEORMAN	136	1,3	106	29		1				33
TIMIS	284	2,8	134	150						11
TULCEA	67	0,7	31	36						42
VASLUI	104	1,0	74	30						38
VALCEA	228	2,2	187	41						20
VRANCEA	308	3,0	269	39						8
MUN. BUCURESTI	1294	12,7	480	813		1				1
ILFOV	278	2,7	70	208						12

*) The total number of incorporations (col 1)

*** Less than 0,01%

Table no.8

Number of incorporations in the trade registers by counties and business categories in the month of August 2009

County	Total		out of which:						APJ	
			PF	companies: 3763				RA		SC
	SNC	SCS		SRL	SA					
	No.	%	No.	No.	No.	No.	No.	No.		
0	1	2	3	4	5	6	7	8	9	
Total ROMÂNIA	10172	100,0	6393	1	1	3743	18		2	14
ALBA	317	3,1	267			49				1
ARAD	219	2,2	130		1	87				1
ARGES	277	2,7	195			82				
BACAU	312	3,1	218			91	1		2	
BIHOR	235	2,3	150			85				
BISTRITA-NASAUD	375	3,7	341			34				
BOTOSANI	91	0,9	72			19				
BRASOV	264	2,6	135			129				
BRAILA	138	1,4	83			55				
BUZAU	305	3,0	235			70				
CARAS-SEVERIN	141	1,4	99			41				1
CALARASI	123	1,2	76			46	1			
CLUJ	424	4,2	270			152	1			1
CONSTANTA	344	3,4	168			176				
COVASNA	90	0,9	74			16				
DAMBOVITA	240	2,4	183			57				
DOLJ	221	2,2	136			85				
GALATI	235	2,3	136			99				
GIURGIU	133	1,3	80			53				
GORJ	110	1,1	68			42				
HARGHITA	212	2,1	176			36				
HUNEDOARA	232	2,3	146			85	1			
IALOMITA	91	0,9	56			35				
IASI	367	3,6	227			140				
MARAMURES	288	2,8	201			86				1
MEHEDINTI	130	1,3	101			29				
MURES	227	2,2	145			81				1
NEAMT	163	1,6	92			70				1
OLT	178	1,7	133			45				
PRAHOVA	261	2,6	150			106				5
SALAJ	153	1,5	118			35				
SATU MARE	179	1,8	130			49				
SIBIU	203	2,0	137			66				
SUCEAVA	194	1,9	114			80				
TELEORMAN	136	1,3	106			29				1
TIMIS	284	2,8	134	1		149				
TULCEA	67	0,7	31			36				
VASLUI	104	1,0	74			30				
VALCEA	229	2,3	187			41	1			
VRANCEA	308	3,0	269			39				
MUN. BUCURESTI	1294	12,7	480			802	11			1
ILFOV	278	2,7	70			206	2			

Table no. 9

Number of incorporations in the trade registers by domains of activity and business categories in the month of August 2009

CAE N segment	Field of activity	Total		out of which:							
				PF	companies: 3763				RA	SC	APJ
		SNC	SCS		SRL	SA					
		No.	%	No.	No.	No.	No.	No.	No.	No.	
0	1	2	3	4	5	6	7	8	9	10	11
	Total ROMÂNIA	10172	100,0	6393	1	1	3743	18		2	14
1	Agriculture, hunting and related service activities	2750	27,0	2606			132	1			11
2	Forestry and logging	34	0,3	11			23				
3	Fishing and aquaculture	24	0,2	17			7				
5	Mining of hard and brown coal	2	0,0				2				
6	Extraction of crude petroleum and natural gas										
7	Mining of metal ores										
8	Other mining and quarrying	16	0,2	1			15				
9	Mining support service activities	1	0,0				1				
10	Manufacture of food products	94	0,9	42			51				1
11	Manufacture of beverages	16	0,2	12			3	1			
12	Manufacture of tobacco products										
13	Manufacture of textiles	9	0,1	5			4				
14	Manufacture of wearing apparel	60	0,6	36			24				
15	Tanning and dressing of leather; manufacture of luggage, handbags, saddlery, harness and footwear; dressing and dyeing of fur	5	0,0	1			4				
16	Manufacture of wood and of products of wood and cork, except furniture; manufacture of articles of straw and plaiting materials	63	0,6	37			25	1			
17	Manufacture of paper and paper products	12	0,1				12				
18	Printing and reproduction of recorded media	11	0,1	6			5				
19	Manufacture of coke and refined petroleum products	1	0,0	1							
20	Manufacture of chemicals and chemical products	5	0,0	1			4				
21	Manufacture of basic pharmaceutical products and pharmaceutical preparations	2	0,0				2				
22	Manufacture of rubber and plastic products	29	0,3	2			27				
23	Manufacture of other non-metallic mineral products	24	0,2	14			10				
24	Manufacture of basic metals	6	0,1	2			4				
25	Manufacture of fabricated metal products, except machinery and equipment	64	0,6	32			32				
26	Manufacture of computer, electronic and optical products	3	0,0	1			2				
27	Manufacture of electrical equipment	4	0,0				4				
28	Manufacture of machinery and equipment n.e.c.	8	0,1				8				
29	Manufacture of motor vehicles, trailers and semi-trailers	2	0,0				2				
30	Manufacture of other transport equipment	6	0,1				6				
31	Manufacture of furniture	23	0,2	7			16				
32	Other manufacturing	28	0,3	19			9				
33	Repair and installation of machinery and equipment	29	0,3	19			9				
35	Electricity, gas, steam and air conditioning supply	23	0,2				22			1	1
36	Water collection, treatment and supply	2	0,0	1			1				
37	Sewerage	6	0,1	1			5				
38	Waste collection, treatment and disposal activities; materials recovery	28	0,3	1			27				
39	Remediation activities and other waste management services										
41	Construction of buildings	777	7,6	52			723	2			
42	Civil engineering	53	0,5	2			51				
43	Specialised construction activities	526	5,2	122			403	1			
45	Wholesale and retail trade and repair of motor vehicles and motorcycles	270	2,7	39			231				
46	Wholesale trade, except of motor vehicles and motorcycles	1057	10,4	207			850				1
47	Retail trade, except of motor vehicles and motorcycles	1759	17,3	590			1165	3		1	
49	Land transport and transport via pipelines	551	5,4	198			353				
50	Water transport	5	0,0	1			4				

Table no. 10

Number of incorporated trading companies and the value of the subscribed share capital, by counties, in the month of August 2009

County	Total registered companies		Subscribed capital		Average subscribed capital on company
	No.	%	thousand Lei	%	thousand Lei
0	1	2	3	4	5
Total ROMÂNIA	3763	100,0	196273,2	100,0	52,4
ALBA	49	1,3	49,6	0,0	1,0
ARAD	88	2,3	17115,1	8,7	194,5
ARGES	82	2,2	473,5	0,2	5,8
BACAU	92	2,4	136,0	0,1	1,5
BIHOR	85	2,3	200,7	0,1	2,4
BISTRITA-NASAUD	34	0,9	34,9	0,0	1,0
BOTOSANI	19	0,5	14,5	***	0,8
BRASOV	129	3,4	413,3	0,2	3,2
BRAILA	55	1,5	21,9	0,0	0,4
BUZAU	70	1,9	252,2	0,1	3,6
CARAS-SEVERIN	41	1,1	32,8	0,0	0,8
CALARASI	47	1,2	210,0	0,1	4,5
CLUJ	153	4,1	9569,7	4,9	63,4
CONSTANTA	176	4,7	19745,3	10,1	112,2
COVASNA	16	0,4	3,2	***	0,2
DAMBOVITA	57	1,5	11425,0	5,8	200,4
DOLJ	85	2,3	118,0	0,1	1,4
GALATI	99	2,6	130,2	0,1	1,3
GIURGIU	53	1,4	9272,9	4,7	175,0
GORJ	42	1,1	25,6	0,0	0,6
HARGHITA	36	1,0	10,7	***	0,3
HUNEDOARA	86	2,3	12315,0	6,3	143,2
IALOMITA	35	0,9	46965,9	23,9	1341,9
IASI	140	3,7	339,4	0,2	2,4
MARAMURES	86	2,3	1580,5	0,8	18,4
MEHEDINTI	29	0,8	6,6	***	0,2
MURES	81	2,2	25,9	0,0	0,3
NEAMT	70	1,9	126,2	0,1	1,8
OLT	45	1,2	63,6	0,0	1,4
PRAHOVA	106	2,8	429,4	0,2	4,1
SALAJ	35	0,9	28,5	0,0	0,8
SATU MARE	49	1,3	47,0	0,0	1,0
SIBIU	66	1,8	237,7	0,1	3,6
SUCEAVA	80	2,1	3076,0	1,6	38,4
TELEORMAN	29	0,8	22,1	0,0	0,8
TIMIS	150	4,0	292,8	0,1	2,0
TULCEA	36	1,0	8,8	***	0,2
VASLUI	30	0,8	8,4	***	0,3
VALCEA	42	1,1	430,1	0,2	10,5
VRANCEA	39	1,0	14,8	***	0,4
MUN. BUCURESTI	813	21,6	52566,7	26,8	65,5
ILFOV	208	5,5	8432,8	4,3	40,5

Note: The average does not include filials because according to the Law no.31/1990 they are not juridical persons

*** Less than 0,01%

Table no. 11

Number of incorporated trading companies and the value of the subscribed share capital by legal forms, in the month of August 2009

Company type	Total registered companies		Subscribed capital		Average subscribed capital on company
	No.	%	thousand Lei	%	thousand Lei
0	1	2	3	4	5
Total ROMÂNIA	3763	100,0	196273,2	100,0	52,4
SNC	1	0,0	0,2	***	
SCS	1	0,0			
SA	18	0,5	51761,0	26,4	4313,4
SRL	3743	99,5	144512,0	73,6	38,7

Note: The average does not include filials because according to the Law no.31/1990 they are not juridical persons

*** Less than 0,01%

Diagram no.5

