



MINISTRY OF JUSTICE

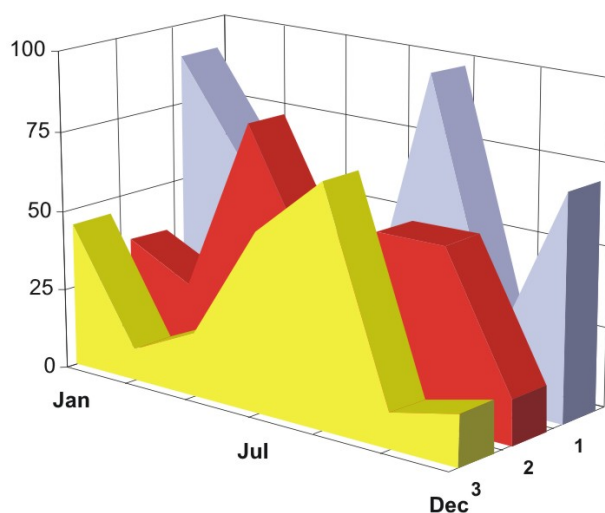
THE NATIONAL TRADE REGISTER OFFICE

București, Bd. Unirii nr. 74, Bl. J3b, tronson II+III, sector 3; Telefon: +40 21 316.08.04, 316.08.10; Fax: +40 21 316.08.03; Cod poștal: 030837
Website: www.onrc.ro; E-mail: onrc@onrc.ro; Cod identificare Fiscală: 14942091

OPERATIONS IN THE CENTRAL TRADE REGISTER

STATISTIC SYNTHESIS

OF RECORDS IN THE CENTRAL TRADE REGISTER - 31st July 2009 - provisional data -



- ISSUE No. 212 -

**MINISTRY OF JUSTICE
THE NATIONAL TRADE REGISTER OFFICE**

- Operations such as incorporation of trading companies, submission of changes, and strike-off are carried out based on Law No.26/1990, as republished, Law No.31/1990, as republished and on the Methodological Norms no. P/608/1998.

- This work reflects the evolution of the operations with the Trade Register Office attached to Bucharest Law Court and the Trade Register Offices attached to County Law Courts.

- The data contained in the Central Trade Register refer to operations for which law sets out the obligation of being registered in the trade registers kept by the 42 trade register offices attached to law courts.

- | |
|---|
| <ul style="list-style-type: none">• <i>The content of this publication shall not be reproduced, partly or entirely, in original or modified form, and shall not be stored in a recovery system and shall not be transmitted in any form or by any means without prior written authorization of the Ministry of Justice – The National Trade Register Office.</i>• <i>The content of this publication December be used in articles, studies, books, as supporting or explanatory data only by clearly and accurately indicating the source.</i> |
|---|

CONTENTS

Page

1	Definitions	1
2.1	Data related to the period December 1990 –July 2009	3
<hr/>		
	Table no. 1 – Operations performed in the trade registers by categories of registration during December 1990 –July 2009, total by country and by counties, shares of counties in the total by country	3
	Table no. 2 – Operations performed in the trade registers by categories of registration during December 1990 –July 2009, total by country and counties, share of categories of operations in the total of each county	4
	Table no. 3 – Number and structure of incorporations in the trade registers during December 1990-July 2009	5
	Chart no. 1 – Structure by years of incorporations in the trade register	
	Table no. 4 – Number of incorporations in the trade registers by counties and capital sources during December 1990 - July 2009	6
	Table no. 5 – Number of incorporations in the trade registers by counties and business categories during December 1990 –July 2009	7
<hr/>		
2.2	Data related to July 2009	8
<hr/>		
	Table no. 6 – Operations performed in the trade registers by counties and categories of registrations in the month of July 2009	8
	Table no. 7 – Number of incorporations in the trade registers by counties and capital sources in the month of July 2009	9
	Table no. 8 – Number of incorporations in the trade registers by counties and business categories in the month of July 2009	10
	Table no. 9 –Number of incorporations in the trade registers by domains of activity and business categories in the month of July 2009	11-12
	Table no. 10 – Number of incorporated trading companies and the value of subscribed share capital, by counties, in the month of July 2009	13
	Table no. 11– Number of incorporated trading companies and the value of subscribed share capital by legal forms, in the month of July 2009	14
	Chart no. 5 – Average value of subscribed share capital by types of trading companies in the month of July 2009	14

Definitions

The Trade Register Office was established based on Law No. 26/1990, as republished and subsequently amended and supplemented, operates as an active institution since December 1990 and is twofold structured:

- at national level, represented by the National Trade Register Office organized under the authority of the Ministry of Justice
- at local level, represented by the 42 Trade Register Offices attached to Law Courts, organized under the subordination of the National Trade Register Office

Categories of persons liable to registration in the trade register:

- natural persons: authorized natural persons, individual enterprises and family enterprises currently carrying on trading activities;
 - legal persons represented by: Trading Companies, National Societies and Companies, National R&D Institutes, Autonomous Administrations, Co-operative Societies, Agricultural Co-operatives, Co-operative Organizations, Economic Interest Groupings, European Economic Interest Groupings, European Societies, European Co-operative Societies, branches of trading companies with legal establishment, operation and incorporation regime of trading company legal form under which they were incorporated.
- **Terms used in tables and charts**
- **Number of companies**, depending on the table, represents the number of trading companies incorporated during the reference period, the number of trading companies struck-off from the trade register. The following forms of organization are included: limited liability companies, joint-stock companies, limited partnerships by share, limited partnerships, general partnerships, and branches thereof.
 - **Value of subscribed share capital:**
 - **total, expressed in national currency:** the share capital value resulted by adding up the subscribed values (in cash and in kind) in national currency (lei)

➤ **Regions of economic development:**

<i>North-East:</i>	Suceava, Botoșani, Neamț, Iași, Bacău, Vaslui.
<i>South-East:</i>	Vrancea, Galați, Buzău, Brăila, Tulcea, Constanța.
<i>South-Muntenia:</i>	Argeș, Dâmbovița, Prahova, Teleorman, Giurgiu, Călărași, Ialomița.
<i>South-West Oltenia:</i>	Gorj, Vâlcea, Dolj, Mehedinți, Olt.
<i>West:</i>	Arad, Caraș-Severin, Hunedoara, Timiș.
<i>North-West:</i>	Bihor, Bistrița, Cluj, Satu Mare, Sălaj, Maramureș.
<i>Center:</i>	Alba, Brașov, Covasna, Harghita, Mureș, Sibiu.
<i>Bucharest-Ilfov:</i>	București, Ilfov.

NACE Code – The classification of economic activities in the national economy was approved by GO No. 656/1997, amended by Order No 601/2002 and Order no. 337/2007 of the President of the National Institute of Statistics, and complies with the international classification used in statistic reports and official documents. The activities are ranked by the harmonization principle, by sections, divisions, groups and classes.

Abbreviations

- **PF** - Natural Person; the following forms of organization are included in this category: natural persons and family associations registered until 25.04.2008, authorized natural persons, individual enterprises and family enterprises.
- **SNC** - General Partnership
- **SCS** - Limited Partnership
- **SCA** - Limited Partnership by Share
- **SA** - Joint-Stock Company
- **SRL** - Limited Liability Company
- **RA** - Autonomous Administration
- **APJ** - Other legal persons having the obligation to register in the trade register: National R&D Institutes, Economic Interest Groupings, European Economic Interest Groupings, European Societies, European Co-operative Societies, Agricultural Co-operatives, Co-operative Organizations.

Sources of Information:

The integrated IT system of the trade register is designed by The National Trade Register Office in compliance with the provisions of the related legislation in force. The source of information consists of the trade registers organized in computerized system, kept by the trade register offices attached to law courts.

Table no. 1

**Operations performed in the trade registers by categories of registration during
December 1990 – July 2009, total by country and by counties, share of counties
in the total by country**

Counties	Total of registered operations		out of which :					
			Registered companies		Changes in statutory documents		Strike off companies	
	No.	%	No.	%	No.	%	No.	%
0	1	2	3	4	7	8	11	12
Total ROMÂNIA	12072968	100,0	1910087	100,0	9576587	100,0	586294	100,0
ALBA	179288	1,5	30394	1,6	142343	1,5	6551	1,1
ARAD	277707	2,3	46588	2,4	218802	2,3	12317	2,1
ARGES	294422	2,4	48842	2,6	234650	2,5	10930	1,9
BACAU	272297	2,3	47604	2,5	211718	2,2	12975	2,2
BIHOR	365472	3,0	58618	3,1	290032	3,0	16822	2,9
BISTRITA-NASAUD	143606	1,2	23342	1,2	112929	1,2	7335	1,3
BOTOSANI	112546	0,9	23413	1,2	82476	0,9	6657	1,1
BRASOV	479001	4,0	59779	3,1	404892	4,2	14330	2,4
BRAILA	191786	1,6	26278	1,4	160639	1,7	4869	0,8
BUZAU	208983	1,7	34563	1,8	162373	1,7	12047	2,1
CARAS-SEVERIN	144443	1,2	23302	1,2	111634	1,2	9507	1,6
CALARASI	109049	0,9	19186	1,0	84329	0,9	5534	0,9
CLUJ	535378	4,4	88543	4,6	427954	4,5	18881	3,2
CONSTANTA	510174	4,2	79529	4,2	401886	4,2	28759	4,9
COVASNA	106006	0,9	16348	0,9	84437	0,9	5221	0,9
DAMBOVITA	175123	1,5	35461	1,9	124967	1,3	14695	2,5
DOLJ	319977	2,7	50096	2,6	254986	2,7	14895	2,5
GALATI	310088	2,6	45189	2,4	249417	2,6	15482	2,6
GIURGIU	95199	0,8	15753	0,8	73744	0,8	5702	1,0
GORJ	191846	1,6	22492	1,2	162245	1,7	7109	1,2
HARGHITA	177931	1,5	29758	1,6	141717	1,5	6456	1,1
HUNEDOARA	243430	2,0	38634	2,0	190386	2,0	14410	2,5
IALOMITA	113162	0,9	17787	0,9	88723	0,9	6652	1,1
IASI	395823	3,3	62033	3,2	318961	3,3	14829	2,5
MARAMURES	246739	2,0	48432	2,5	185982	1,9	12325	2,1
MEHEDINTI	127241	1,1	21207	1,1	97553	1,0	8481	1,4
MURES	339974	2,8	47956	2,5	276541	2,9	15477	2,6
NEAMT	263577	2,2	41194	2,2	206578	2,2	15805	2,7
OLT	148212	1,2	26536	1,4	111839	1,2	9837	1,7
PRAHOVA	410619	3,4	63723	3,3	328539	3,4	18357	3,1
SALAJ	104001	0,9	18918	1,0	78952	0,8	6131	1,0
SATU MARE	186868	1,5	32429	1,7	143073	1,5	11366	1,9
SIBIU	270272	2,2	37435	2,0	222531	2,3	10306	1,8
SUCEAVA	283424	2,3	47765	2,5	217347	2,3	18312	3,1
TELEORMAN	131443	1,1	21739	1,1	104469	1,1	5235	0,9
TIMIS	397240	3,3	67735	3,5	310662	3,2	18843	3,2
TULCEA	144469	1,2	19527	1,0	119011	1,2	5931	1,0
VASLUI	151077	1,3	24016	1,3	117822	1,2	9239	1,6
VALCEA	182779	1,5	30926	1,6	141710	1,5	10143	1,7
VRANCEA	146723	1,2	23115	1,2	118186	1,2	5422	0,9
MUN. BUCURESTI	2399740	19,9	359359	18,8	1915749	20,0	124632	21,3
ILFOV	185833	1,5	34543	1,8	143803	1,5	7487	1,3

Table no. 2

**Operations performed in the trade registers during December 1990 – July 2009,
total by country and counties, share of categories of operations in the total of
each county**

Counties	Total registered operations of		out of which :					
			Registered companies		Changes in statutory documents		Strike off companies	
	No.	%	No.	%	No.	%	No.	%
0	1	2	3	4	7	8	11	12
Total ROMÂNIA	12072968	100,0	1910087	15,8	9576587	79,3	586294	4,9
ALBA	179288	100,0	30394	17,0	142343	79,4	6551	3,7
ARAD	277707	100,0	46588	16,8	218802	78,8	12317	4,4
ARGES	294422	100,0	48842	16,6	234650	79,7	10930	3,7
BACAU	272297	100,0	47604	17,5	211718	77,8	12975	4,8
BIHOR	365472	100,0	58618	16,0	290032	79,4	16822	4,6
BISTRITA-NASAUD	143606	100,0	23342	16,3	112929	78,6	7335	5,1
BOTOSANI	112546	100,0	23413	20,8	82476	73,3	6657	5,9
BRASOV	479001	100,0	59779	12,5	404892	84,5	14330	3,0
BRAILA	191786	100,0	26278	13,7	160639	83,8	4869	2,5
BUZAU	208983	100,0	34563	16,5	162373	77,7	12047	5,8
CARAS-SEVERIN	144443	100,0	23302	16,1	111634	77,3	9507	6,6
CALARASI	109049	100,0	19186	17,6	84329	77,3	5534	5,1
CLUJ	535378	100,0	88543	16,5	427954	79,9	18881	3,5
CONSTANTA	510174	100,0	79529	15,6	401886	78,8	28759	5,6
COVASNA	106006	100,0	16348	15,4	84437	79,7	5221	4,9
DAMBOVITA	175123	100,0	35461	20,2	124967	71,4	14695	8,4
DOLJ	319977	100,0	50096	15,7	254986	79,7	14895	4,7
GALATI	310088	100,0	45189	14,6	249417	80,4	15482	5,0
GIURGIU	95199	100,0	15753	16,5	73744	77,5	5702	6,0
GORJ	191846	100,0	22492	11,7	162245	84,6	7109	3,7
HARGHITA	177931	100,0	29758	16,7	141717	79,6	6456	3,6
HUNEDOARA	243430	100,0	38634	15,9	190386	78,2	14410	5,9
IALOMITA	113162	100,0	17787	15,7	88723	78,4	6652	5,9
IASI	395823	100,0	62033	15,7	318961	80,6	14829	3,7
MARAMURES	246739	100,0	48432	19,6	185982	75,4	12325	5,0
MEHEDINTI	127241	100,0	21207	16,7	97553	76,7	8481	6,7
MURES	339974	100,0	47956	14,1	276541	81,3	15477	4,6
NEAMT	263577	100,0	41194	15,6	206578	78,4	15805	6,0
OLT	148212	100,0	26536	17,9	111839	75,5	9837	6,6
PRAHOVA	410619	100,0	63723	15,5	328539	80,0	18357	4,5
SALAJ	104001	100,0	18918	18,2	78952	75,9	6131	5,9
SATU MARE	186868	100,0	32429	17,4	143073	76,6	11366	6,1
SIBIU	270272	100,0	37435	13,9	222531	82,3	10306	3,8
SUCEAVA	283424	100,0	47765	16,9	217347	76,7	18312	6,5
TELEORMAN	131443	100,0	21739	16,5	104469	79,5	5235	4,0
TIMIS	397240	100,0	67735	17,1	310662	78,2	18843	4,7
TULCEA	144469	100,0	19527	13,5	119011	82,4	5931	4,1
VASLUI	151077	100,0	24016	15,9	117822	78,0	9239	6,1
VALCEA	182779	100,0	30926	16,9	141710	77,5	10143	5,5
VRANCEA	146723	100,0	23115	15,8	118186	80,6	5422	3,7
MUN. BUCURESTI	2399740	100,0	359359	15,0	1915749	79,8	124632	5,2
ILFOV	185833	100,0	34543	18,6	143803	77,4	7487	4,0

Table no.3

Number and structure of incorporations in the trade registers during December 1990 - July 2009

Period (year, month)	Registered companies		Percentage	
	No.		%	%
0	1	2	3	
Total, 31 December 2008, out of which	1919603	100,00		
Year 1990	81	0,00		
Year 1991	95840	4,99		
Year 1992	137456	7,16		
Year 1993	117078	6,10		
Year 1994	137445	7,16		
Year 1995	65479	3,41		
Year 1996	62089	3,23		
Year 1997	55663	2,90		
Year 1998	63878	3,33		
Year 1999	57197	2,98		
Year 2000	57291	2,98		
Year 2001	61265	3,19		
Year 2002	84780	4,42		
Year 2003	123582	6,44		
Year 2004	144284	7,52		
Year 2005	159464	8,31		
Year 2006	135371	7,05		
Year 2007	144728	7,54		
Year 2008	144177	7,51		
Year 2009 (I - XII) out of which :	72455			112,0
January	9880			13,6
February	13630			18,8
March	12714			17,5
April	9131			12,6
May	8870			12,2
June	8714			12,0
July	9516			12,0

Note: Column 2 reveals the annual structure of incorporations; column 3 reveals the structure by months during the current year.

Diagram no.1

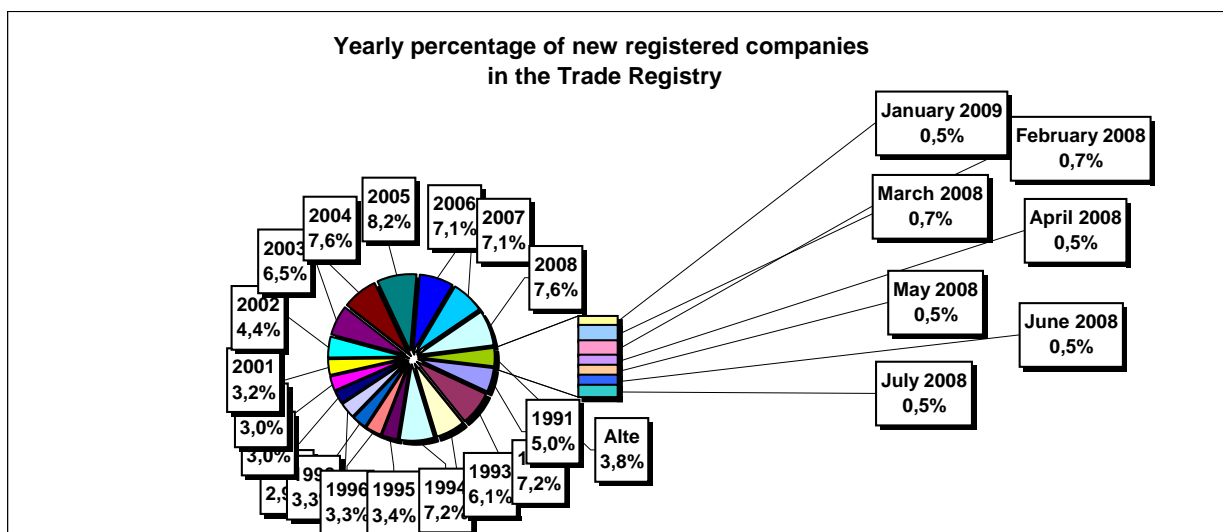


Table no. 4

**Number of incorporations in the trade registers by counties and capital sources during
December 1990 - July 2009**

Counties	Total		out of which:							Ranking by: *
			Private capital				State majority capital		Mixed capital (state+private)	
			out of which:				out of which:			
			PF	Companies	SC	APJ	RA	Companies	Companies	
No.	%	No.	No.	No.	No.	No.	No.	No.		
0	1	2	3	4	5	6	6	7	8	9
Total ROMÂNIA	1910087	100,0	513665	1376497	2041	5496	1380	2386	8629	X
ALBA	30394	1,6	10805	19153	36	145	38	47	170	25
ARAD	46589	2,4	17707	28258	60	159	29	41	336	15
ARGES	48842	2,6	15720	32692	48	171	29	30	152	10
BACAU	47604	2,5	16156	30835	151	160	35	42	226	14
BIHOR	58619	3,1	15203	42795	63	148	39	62	309	8
BISTRITA-NASAUD	23342	1,2	8305	14729	46	98	26	29	109	31
BOTOSANI	23413	1,2	11005	11923	40	131	21	174	119	30
BRASOV	59779	3,1	13473	45821	58	119	49	87	172	7
BRAILA	26278	1,4	7317	18580	42	98	29	45	167	28
BUZAU	34563	1,8	10361	23810	46	145	28	42	131	21
CARAS-SEVERIN	23302	1,2	8176	14739	42	105	38	65	137	32
CALARASI	19186	1,0	5901	12987	22	86	18	77	95	2
CLUJ	88543	4,6	23338	64634	62	152	52	41	264	3
CONSTANTA	79529	4,2	16066	62522	89	207	51	51	543	41
COVASNA	16348	0,9	6024	10049	41	69	24	32	109	20
DAMBOVITA	35461	1,9	16032	19001	32	137	30	75	154	9
DOLJ	50095	2,6	11126	38464	39	165	40	58	203	16
GALATI	45189	2,4	10127	34667	35	136	30	51	143	34
GIURGIU	15753,12	0,8	3811	11601	16	83	23	109	110	26
GORJ	22492	1,2	5690	16358	26	184	51	83	100	18
HARGHITA	29758	1,6	12632	16674	64	90	24	43	231	40
HUNEDOARA	38634	2,0	10404	27695	33	82	42	93	285	6
IALOMITA	17787	0,9	6835	10694	27	79	15	46	91	22
IASI	62033	3,2	18743	42590	87	166	34	71	344	11
MARAMURES	48432	2,5	19450	28614	43	126	37	40	123	36
MEHEDINTI	21207	1,1	7182	13777	19	84	20	27	98	12
MURES	47956	2,5	18119	29381	68	156	30	34	168	17
NEAMT	41194	2,2	15292	25446	66	164	30	30	166	27
OLT	26536	1,4	10285	15847	27	164	26	64	123	5
PRAHOVA	63723	3,3	20162	42923	67	177	50	72	272	39
SALAJ	18918	1,0	7506	11152	41	108	19	28	64	23
SATU MARE	32429	1,7	11006	21099	41	89	19	42	134	19
SIBIU	37435	2,0	9993	26983	37	120	34	109	159	13
SUCEAVA	47765	2,5	22605	24564	73	206	31	65	221	35
TELEORMAN	21739	1,1	7760	13544	33	153	21	46	182	4
TIMIS	67735	3,5	11786	55281	69	141	38	69	351	37
TULCEA	19527	1,0	7086	12066	36	66	19	42	212	29
VASLUI	24016	1,3	11616	12076	22	109	16	41	136	24
VALCEA	30926	1,6	12303	18194	64	170	42	38	115	33
VRANCEA	23115	1,2	7038	15771	35	113	17	27	114	1
MUN. BUCURESTI	359358	18,8	29065	328749	64	141	115	105	1120	38
ILFOV	34543	1,8	4454	29759	31	94	21	13	171	42

*) The total number of incorporations (col 1)

Table no. 5

**Number of incorporations in the trade registers by counties and business categories
during December 1990 – July 2009**

County	Total		out of which:							
			PF	companies: 1387505				RA	SC	APJ
	SNC	SCS		SRL	SA					
	No.	%	No.	No.	No.	No.	No.	No.	No.	
0	1	2	3	4	5	6	7	8	9	10
Total ROMÂNIA	1910087	100,0	513665	32673	1604	1319658	33570	1380	2041	5496
ALBA	30394	1,6	10805	890	11	17895	574	38	36	145
ARAD	46588	2,4	17707	54	12	27871	696	29	60	159
ARGES	48842	2,6	15720	107	15	31914	838	29	48	171
BACAU	47604	2,5	16156	1299	4	29058	741	35	151	160
BIHOR	58618	3,1	15203	126	47	42067	925	39	63	148
BISTRITA-NASAUD	23342	1,2	8305	146	22	14278	421	26	46	98
BOTOSANI	23413	1,2	11005	468	1	11288	459	21	40	131
BRASOV	59779	3,1	13473	239	20	44934	887	49	58	119
BRAILA	26278	1,4	7317	376	12	17876	528	29	42	98
BUZAU	34563	1,8	10361	3747	46	19599	591	28	46	145
CARAS-SEVERIN	23302	1,2	8176	117	9	14341	474	38	42	105
CALARASI	19186	1,0	5901	609	3	12187	360	18	22	86
CLUJ	88543	4,6	23338	2112	21	61471	1335	52	62	152
CONSTANTA	79529	4,2	16066	311	23	61260	1522	51	89	207
COVASNA	16348	0,9	6024	148	4	9732	306	24	41	69
DAMBOVITA	35461	1,9	16032	60	8	18662	500	30	32	137
DOLJ	50096	2,6	11126	1560	8	36249	909	40	39	165
GALATI	45189	2,4	10127	1574	6	32420	861	30	35	136
GIURGIU	15753,12	0,8	3811	35	8	11447	330	23	16	83
GORJ	22492	1,2	5690	29	1	16008	503	51	26	184
HARGHITA	29758	1,6	12632	62	7	16345	534	24	64	90
HUNEDOARA	38634	2,0	10404	1166	98	26117	692	42	33	82
IALOMITA	17787	0,9	6835	268	12	10197	354	15	27	79
IASI	62033	3,2	18743	507	111	41356	1029	34	87	166
MARAMURES	48432	2,5	19450	1927	23	26221	605	37	43	126
MEHEDINTI	21207	1,1	7182	427	3	13132	340	20	19	84
MURES	47956	2,5	18119	37	34	28829	683	30	68	156
NEAMT	41194	2,2	15292	3293	30	21636	683	30	66	164
OLT	26536	1,4	10285	1611	1	13920	502	26	27	164
PRAHOVA	63723	3,3	20162	3122	15	39202	928	50	67	177
SALAJ	18918	1,0	7506	600	4	10341	299	19	41	108
SATU MARE	32429	1,7	11006	283	9	20501	481	19	41	89
SIBIU	37435	2,0	9993	778	49	25748	676	34	37	120
SUCEAVA	47765	2,5	22605	438	8	23806	598	31	73	206
TELEORMAN	21739	1,1	7760	272	399	12670	431	21	33	153
TIMIS	67735	3,5	11786	615	33	53769	1284	38	69	141
TULCEA	19527	1,0	7086	1363	114	10359	484	19	36	66
VASLUI	24016	1,3	11616	90	13	11727	423	16	22	109
VALCEA	30926	1,6	12303	364	6	17473	504	42	64	170
VRANCEA	23115	1,2	7038	356	10	15081	465	17	35	113
MUN. BUCURESTI	359359	18,8	29065	1038	312	321461	7163	115	64	141
ILFOV	34543	1,8	4454	49	32	29210	652	21	31	94

Table no. 6

Operations performed in the trade registers by counties and categories of registration in the month of July 2009

County	Total of operations carried on		out of which:					
			New incorporations		Changes in statutory documents		Strike off companies	
	No.	%	No.	%	No.	%	No.	%
0	1	2	3	4	5	6	9	10
Total ROMÂNIA	209475	100,0	8714	4,2	195235	93,2	5526	2,6
ALBA	4206	100,0	158	3,8	3905	92,8	143	3,4
ARAD	4866	100,0	165	3,4	4462	91,7	239	4,9
ARGES	6235	100,0	198	3,2	5959	95,6	78	1,3
BACAU	5262	100,0	196	3,7	5007	95,2	59	1,1
BIHOR	7112	100,0	264	3,7	6727	94,6	121	1,7
BISTRITA-NASAUD	2467	100,0	106	4,3	2268	91,9	93	3,8
BOTOSANI	2327	100,0	81	3,5	2157	92,7	89	3,8
BRASOV	7036	100,0	304	4,3	6502	92,4	230	3,3
BRAILA	3318	100,0	193	5,8	2994	90,2	131	3,9
BUZAU	3377	100,0	141	4,2	3175	94,0	61	1,8
CARAS-SEVERIN	3062	100,0	75	2,4	2896	94,6	91	3,0
CALARASI	1954	100,0	102	5,2	1815	92,9	37	1,9
CLUJ	8719	100,0	342	3,9	8227	94,4	150	1,7
CONSTANTA	9585	100,0	347	3,6	9139	95,3	99	1,0
COVASNA	2016	100,0	70	3,5	1848	91,7	98	4,9
DAMBOVITA	3185	100,0	150	4,7	2959	92,9	76	2,4
DOLJ	5593	100,0	245	4,4	5198	92,9	150	2,7
GALATI	5232	100,0	216	4,1	4957	94,7	59	1,1
GIURGIU	1587	100,0	73	4,6	1266	79,8	248	15,6
GORJ	2457	100,0	97	3,9	2332	94,9	28	1,1
HARGHITA	3829	100,0	103	2,7	3663	95,7	63	1,6
HUNEDOARA	3544	100,0	180	5,1	3191	90,0	173	4,9
IALOMITA	1976	100,0	76	3,8	1783	90,2	117	5,9
IASI	8008	100,0	405	5,1	7289	91,0	314	3,9
MARAMURES	4260	100,0	212	5,0	3979	93,4	69	1,6
MEHEDINTI	1916	100,0	90	4,7	1786	93,2	40	2,1
MURES	5173	100,0	207	4,0	4881	94,4	85	1,6
NEAMT	4064	100,0	150	3,7	3779	93,0	135	3,3
OLT	2345	100,0	95	4,1	2215	94,5	35	1,5
PRAHOVA	9379	100,0	357	3,8	8623	91,9	399	4,3
SALAJ	2306	100,0	92	4,0	2018	87,5	196	8,5
SATU MARE	2859	100,0	138	4,8	2647	92,6	74	2,6
SIBIU	3692	100,0	215	5,8	3376	91,4	101	2,7
SUCEAVA	4471	100,0	215	4,8	4235	94,7	21	0,5
TELEORMAN	1436	100,0	123	8,6	1299	90,5	14	1,0
TIMIS	4107	100,0	302	7,4	3570	86,9	235	5,7
TULCEA	2396	100,0	55	2,3	2307	96,3	34	1,4
VASLUI	1834	100,0	109	5,9	1709	93,2	16	0,9
VALCEA	3583	100,0	119	3,3	3340	93,2	124	3,5
VRANCEA	2141	100,0	95	4,4	2007	93,7	39	1,8
MUN. BUCURESTI	42151	100,0	1564	3,7	39679	94,1	908	2,2
ILFOV	4409	100,0	289	6,6	4066	92,2	54	1,2

Table no.7

Number of incorporations in the trade registers by counties and capital sources in the month of July 2009

County	Total		out of which:						Rnking by: *	
			Private capital				State majority capital			Mixed capital (state+priva Companies
			out of which:				out of which:			
			PF	Companies	SC	APJ	RA	Companie s		Companie s
No.	%	No.	No.	No.	No.	No.	No.			
0	1	2	3	4	5	6	7	8	9	
Total ROMÂNIA	8714	100,0	4444	4238	3	8	17	18	3	X
ALBA	158	1,8	103	55						21
ARAD	165	1,9	85	79			1	1		20
ARGES	198	2,3	94	104						16
BACAU	196	2,2	115	80	1					17
BIHOR	264	3,0	180	84						9
BISTRITA-NASAUD	106	1,2	68	36			2	2		29
BOTOSANI	81	0,9	48	33						37
BRASOV	304	3,5	159	145						6
BRAILA	193	2,2	134	58			1	1		18
BUZAU	141	1,6	79	62						24
CARAS-SEVERIN	75	0,9	40	32			3	3		39
CALARASI	102	1,2	63	39						5
CLUJ	342	3,9	153	188		1				4
CONSTANTA	347	4,0	137	208	2					41
COVASNA	70	0,8	50	20						22
DAMBOVITA	150	1,7	95	53		1	1	1		10
DOLJ	245	2,8	105	140						11
GALATI	216	2,5	122	94						32
GIURGIU	73	0,8	28	44			1	1		30
GORJ	97	1,1	61	35			1	1		19
HARGHITA	103	1,2	66	37						38
HUNEDOARA	180	2,1	92	86			2	2		2
IALOMITA	76	0,9	33	38		5				8
IASI	405	4,6	259	146						14
MARAMURES	212	2,4	130	82						36
MEHEDINTI	90	1,0	63	26			1	1		15
MURES	207	2,4	128	79						23
NEAMT	150	1,7	83	66			1	1		33
OLT	95	1,1	57	38						3
PRAHOVA	357	4,1	201	156						25
SALAJ	92	1,1	60	32						35
SATU MARE	138	1,6	67	71						12
SIBIU	215	2,5	132	83						13
SUCEAVA	215	2,5	113	102						26
TELEORMAN	123	1,4	67	56						7
TIMIS	302	3,5	149	151					2	42
TULCEA	55	0,6	27	28						28
VASLUI	109	1,3	73	36						27
VALCEA	119	1,4	81	35			2	2	1	34
VRANCEA	95	1,1	53	40		1	1	1		1
MUN. BUCURESTI	1564	17,9	499	1064				1		31
ILFOV	289	3,3	92	197						40

*) The total number of incorporations (col 1)

*** Less than 0,01%

Table no.8

Number of incorporations in the trade registers by counties and business categories in the month of July 2009

County	Total		out of which:						APJ	
			PF	companies: 4242				RA		SC
	SNC	SCS		SRL	SA					
	No.	%	No.	No.	No.	No.	No.	No.		
0	1	2	3	4	5	6	7	8	9	
Total ROMÂNIA	8714	100,0	4444			4180	62	17	3	8
ALBA	158	1,8	103			54	1			
ARAD	165	1,9	85			79		1		
ARGES	198	2,3	94			103	1			
BACAU	196	2,2	115			79	1		1	
BIHOR	264	3,0	180			83	1			
BISTRITA-NASAUD	106	1,2	68			36		2		
BOTOSANI	81	0,9	48			33				
BRASOV	304	3,5	159			144	1			
BRAILA	193	2,2	134			58		1		
BUZAU	141	1,6	79			62				
CARAS-SEVERIN	75	0,9	40			32		3		
CALARASI	102	1,2	63			39				
CLUJ	342	3,9	153			188				1
CONSTANTA	347	4,0	137			207	1		2	
COVASNA	70	0,8	50			20				
DAMBOVITA	150	1,7	95			53		1		1
DOLJ	245	2,8	105			139	1			
GALATI	216	2,5	122			94				
GIURGIU	73	0,8	28			44		1		
GORJ	97	1,1	61			34	1	1		
HARGHITA	103	1,2	66							
HUNEDOARA	180	2,1	92			85	1	2		
IALOMITA	76	0,9	33			38				5
IASI	405	4,6	259			146				
MARAMURES	212	2,4	130			82				
MEHEDINTI	90	1,0	63			26		1		
MURES	207	2,4	128			79				
NEAMT	150	1,7	83			66		1		
OLT	95	1,1	57			38				
PRAHOVA	357	4,1	201			155	1			
SALAJ	92	1,1	60			32				
SATU MARE	138	1,6	67			71				
SIBIU	215	2,5	132			83				
SUCEAVA	215	2,5	113			102				
TELEORMAN	123	1,4	67			55	1			
TIMIS	302	3,5	149			151	2			
TULCEA	55	0,6	27			28				
VASLUI	109	1,3	73			36				
VALCEA	119	1,4	81			36		2		
VRANCEA	95	1,1	53			38	2	1		1
MUN. BUCURESTI	1564	17,9	499			1059	6			
ILFOV	289	3,3	92			193	4			

Table no. 9

Number of incorporations in the trade registers by domains of activity and business categories in the month of July 2009

CAEN segment	Field of activity	Total		out of which:							
				PF	companies: 4242				RA	SC	APJ
		No.	%		No.	SNC	SCS	SRL			
				No.		No.	No.	No.	No.	No.	No.
0	1	2	3	4	5	6	7	8	9	10	11
	Total ROMÂNIA	8714	100,0	4444			4217	25	17	3	8
1	Agriculture, hunting and related service activities	396	4,5	288			102				6
2	Forestry and logging	52	0,6	9			26		17		
3	Fishing and aquaculture	39	0,4	28			11				
5	Mining of hard and brown coal										
6	Extraction of crude petroleum and natural gas										
7	Mining of metal ores	1	0,0					1			
8	Other mining and quarrying	17	0,2	2			15				
9	Mining support service activities	1	0,0	1							
10	Manufacture of food products	87	1,0	40			45	1			1
11	Manufacture of beverages	7	0,1	6			1				
12	Manufacture of tobacco products										
13	Manufacture of textiles	9	0,1	6			3				
14	Manufacture of wearing apparel	49	0,6	17			31	1			
15	Tanning and dressing of leather; manufacture of luggage, handbags, saddlery, harness and footwear; dressing and dyeing of fur	8	0,1	4			4				
16	Manufacture of wood and of products of wood and cork, except furniture; manufacture of articles of straw and	61	0,7	32			28	1			
17	Manufacture of paper and paper products	5	0,1	4			1				
18	Printing and reproduction of recorded media	16	0,2	6			10				
19	Manufacture of coke and refined petroleum products	1	0,0				1				
20	Manufacture of chemicals and chemical products	8	0,1	3			5				
21	Manufacture of basic pharmaceutical products and pharmaceutical preparations										
22	Manufacture of rubber and plastic products	38	0,4	7			31				
23	Manufacture of other non-metallic mineral products	51	0,6	27			24				
24	Manufacture of basic metals	9	0,1	3			5	1			
25	Manufacture of fabricated metal products, except machinery and equipment	80	0,9	39			40	1			
26	Manufacture of computer, electronic and optical products	4	0,0				4				
27	Manufacture of electrical equipment	7	0,1	2			5				
28	Manufacture of machinery and equipment n.e.c.	11	0,1				10	1			
29	Manufacture of motor vehicles, trailers and semi-trailers	1	0,0				1				
30	Manufacture of other transport equipment	5	0,1				5				
31	Manufacture of furniture	29	0,3	11			18				
32	Other manufacturing	34	0,4	25			9				
33	Repair and installation of machinery and equipment	34	0,4	13			21				
35	Electricity, gas, steam and air conditioning supply	23	0,3				22	1			
36	Water collection, treatment and supply	5	0,1				2	3			
37	Sewerage	6	0,1	1			5				
38	Waste collection, treatment and disposal activities; materials recovery	28	0,3	1			27				
39	Remediation activities and other waste management services										
41	Construction of buildings	777	8,9	52			723	2			
42	Civil engineering	53	0,6	2			51				
43	Specialised construction activities	526	6,0	122			403	1			
45	Wholesale and retail trade and repair of motor vehicles and motorcycles	270	3,1	39			231				
46	Wholesale trade, except of motor vehicles and motorcycles	1057	12,1	207			850				1
47	Retail trade, except of motor vehicles and motorcycles	1759	20,2	590			1165	3		1	
49	Land transport and transport via pipelines	551	6,3	198			353				
50	Water transport	5	0,1	1			4				

Table no. 10

Number of incorporated trading companies and the value of the subscribed share capital, by counties, in the month of July 2009

County	Total registered companies		Subscribed capital		Average subscribed capital on company
	No.	%	thousand Lei	%	thousand Lei
0	1	2	3	4	5
Total ROMÂNIA	4242	100,0	150217,0	100,0	35,6
ALBA	55	1,3	124,7	0,1	2,3
ARAD	79	1,9	12404,2	8,3	157,0
ARGES	104	2,5	306,9	0,2	3,0
BACAU	80	1,9	2871,0	1,9	35,9
BIHOR	84	2,0	40,5	0,0	0,5
BISTRITA-NASAUD	36	0,8	11,1	***	0,3
BOTOSANI	33	0,8	16,9	0,0	0,5
BRASOV	145	3,4	488,7	0,3	3,4
BRAILA	58	1,4	732,4	0,5	12,6
BUZAU	62	1,5	22,2	0,0	0,4
CARAS-SEVERIN	32	0,8	8,4	***	0,3
CALARASI	39	0,9	9,6	***	0,2
CLUJ	188	4,4	317,7	0,2	1,7
CONSTANTA	208	4,9	162,7	0,1	0,8
COVASNA	20	0,5	2808,3	1,9	140,4
DAMBOVITA	53	1,2	11,4	***	0,2
DOLJ	140	3,3	113,7	0,1	0,8
GALATI	94	2,2	445,6	0,3	4,7
GIURGIU	44	1,0	1508,5	1,0	34,3
GORJ	35	0,8	462,9	0,3	13,2
HARGHITA	37	0,9	167,9	0,1	4,7
HUNEDOARA	86	2,0	2202,3	1,5	25,6
IALOMITA	38	0,9	11,7	***	0,3
IASI	146	3,4	254,2	0,2	1,8
MARAMURES	82	1,9	64,6	0,0	0,8
MEHEDINTI	26	0,6	6,7	***	0,3
MURES	79	1,9	307,2	0,2	3,9
NEAMT	66	1,6	18,7	0,0	0,3
OLT	38	0,9	12,0	***	0,3
PRAHOVA	156	3,7	5786,6	3,9	37,6
SALAJ	32	0,8	8,8	***	0,3
SATU MARE	71	1,7	60,7	0,0	0,9
SIBIU	83	2,0	1593,5	1,1	19,2
SUCEAVA	102	2,4	38,7	0,0	0,4
TELEORMAN	56	1,3	32,6	0,0	0,6
TIMIS	153	3,6	51446,6	34,2	338,5
TULCEA	28	0,7	18,9	0,0	0,7
VASLUI	36	0,8	8,2	***	0,2
VALCEA	36	0,8	20,3	0,0	0,6
VRANCEA	40	0,9	31,0	0,0	0,8
MUN. BUCURESTI	1065	25,1	23690,9	15,8	22,4
ILFOV	197	4,6	41567,5	27,7	212,1

Note: The average does not include filials because according to the Law no.31/1990 they are not juridical persons

*** Less than 0,01%

Table no. 11

Number of incorporated trading companies and the value of the subscribed share capital by legal forms, in the month of July 2009

Company type	Total registered companies		Subscribed capital		Average subscribed capital on company
	No.	%	thousand Lei	%	thousand Lei
0	1	2	3	4	5
Total ROMÂNIA	4242	100,0	150217,0	100,0	35,6
SNC					
SCS					
SA	62	1,5	44068,8	29,3	831,5
SRL	4180	98,5	106148,2	70,7	25,5

Note: The average does not include filials because according to the Law no.31/1990 they are not juridical persons

*** Less than 0,01%

Diagram no.5

