



MINISTRY OF JUSTICE

THE NATIONAL TRADE REGISTER OFFICE

București, Bd. Unirii nr. 74, Bl. J3b, tronson II+III, sector 3; Telefon: +40 21 316.08.04, 316.08.10; Fax: +40 21 316.08.03; Cod poștal: 030837
Website: www.onrc.ro; E-mail: onrc@onrc.ro; Cod identificare Fiscală: 14942091

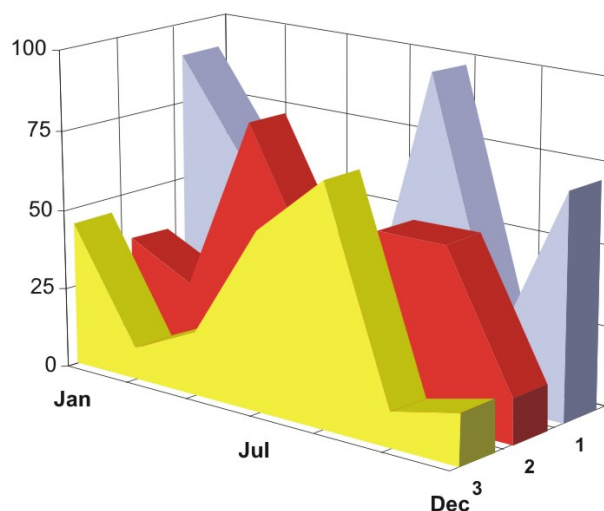
OPERATIONS IN THE CENTRAL TRADE REGISTER

STATISTIC SYNTHESIS

OF

RECORDS IN THE CENTRAL TRADE REGISTER

- 31st May 2009 - provisional data -



- ISSUE No. 210 -

**MINISTRY OF JUSTICE
THE NATIONAL TRADE REGISTER OFFICE**

- Operations such as incorporation of trading companies, submission of changes, and strike-off are carried out based on Law No.26/1990, as republished, Law No.31/1990, as republished and on the Methodological Norms no. P/608/1998.

- This work reflects the evolution of the operations with the Trade Register Office attached to Bucharest Law Court and the Trade Register Offices attached to County Law Courts.

- The data contained in the Central Trade Register refer to operations for which law sets out the obligation of being registered in the trade registers kept by the 42 trade register offices attached to law courts.

• The content of this publication shall not be reproduced, partly or entirely, in original or modified form, and shall not be stored in a recovery system and shall not be transmitted in any form or by any means without prior written authorization of the Ministry of Justice – The National Trade Register Office.

• The content of this publication shall not be used in articles, studies, books, as supporting or explanatory data only by clearly and accurately indicating the source.

CONTENTS

Page

1	Definitions	1
2.1	Data related to the period December 1990 –May 2009	3
<hr/>		
	Table no. 1 – Operations performed in the trade registers by categories of registration during December 1990 –May 2009, total by country and by counties, shares of counties in the total by country	3
	Table no. 2 – Operations performed in the trade registers by categories of registration during December 1990 –May 2009, total by country and counties, share of categories of operations in the total of each county	4
	Table no. 3 – Number and structure of incorporations in the trade registers during December 1990-May 2009	5
	Chart no. 1 – Structure by years of incorporations in the trade register	
	Table no. 4 – Number of incorporations in the trade registers by counties and capital sources during December 1990 - May 2009	6
	Table no. 5 – Number of incorporations in the trade registers by counties and business categories during December 1990 –May 2009	7
<hr/>		
2.2	Data related to May 2009	8
<hr/>		
	Table no. 6 – Operations performed in the trade registers by counties and categories of registrations in the month of May 2009	8
	Table no. 7 – Number of incorporations in the trade registers by counties and capital sources in the month of May 2009	9
	Table no. 8 – Number of incorporations in the trade registers by counties and business categories in the month of May 2009	10
	Table no. 9 –Number of incorporations in the trade registers by domains of activity and business categories in the month of May 2009	11-12
	Table no. 10 – Number of incorporated trading companies and the value of subscribed share capital, by counties, in the month of May 2009	13
	Table no. 11– Number of incorporated trading companies and the value of subscribed share capital by legal forms, in the month of May 2009	14
	Chart no. 5 – Average value of subscribed share capital by types of trading companies in the month of May 2009	14

Definitions

The Trade Register Office was established based on Law No. 26/1990, as republished and subsequently amended and supplemented, operates as an active institution since December 1990 and is twofold structured:

- at national level, represented by the National Trade Register Office organized under the authority of the Ministry of Justice
- at local level, represented by the 42 Trade Register Offices attached to Law Courts, organized under the subordination of the National Trade Register Office

Categories of persons liable to registration in the trade register:

- natural persons: authorized natural persons, individual enterprises and family enterprises currently carrying on trading activities;
 - legal persons represented by: Trading Companies, National Societies and Companies, National R&D Institutes, Autonomous Administrations, Co-operative Societies, Agricultural Co-operatives, Co-operative Organizations, Economic Interest Groupings, European Economic Interest Groupings, European Societies, European Co-operative Societies, branches of trading companies with legal establishment, operation and incorporation regime of trading company legal form under which they were incorporated.
- **Terms used in tables and charts**
- **Number of companies**, depending on the table, represents the number of trading companies incorporated during the reference period, the number of trading companies struck-off from the trade register. The following forms of organization are included: limited liability companies, joint-stock companies, limited partnerships by share, limited partnerships, general partnerships, and branches thereof.
 - **Value of subscribed share capital:**
 - **total, expressed in national currency:** the share capital value resulted by adding up the subscribed values (in cash and in kind) in national currency (lei)

➤ **Regions of economic development:**

<i>North-East:</i>	Suceava, Botoșani, Neamț, Iași, Bacău, Vaslui.
<i>South-East:</i>	Vrancea, Galați, Buzău, Brăila, Tulcea, Constanța.
<i>South-Muntenia:</i>	Argeș, Dâmbovița, Prahova, Teleorman, Giurgiu, Călărași, Ialomița.
<i>South-West Oltenia:</i>	Gorj, Vâlcea, Dolj, Mehedinți, Olt.
<i>West:</i>	Arad, Caraș-Severin, Hunedoara, Timiș.
<i>North-West:</i>	Bihor, Bistrița, Cluj, Satu Mare, Sălaj, Maramureș.
<i>Center:</i>	Alba, Brașov, Covasna, Harghita, Mureș, Sibiu.
<i>Bucharest-Ilfov:</i>	București, Ilfov.

NACE Code – The classification of economic activities in the national economy was approved by GO No. 656/1997, amended by Order No 601/2002 and Order no. 337/2007 of the President of the National Institute of Statistics, and complies with the international classification used in statistic reports and official documents. The activities are ranked by the harmonization principle, by sections, divisions, groups and classes.

Abbreviations

- **PF** - Natural Person; the following forms of organization are included in this category: natural persons and family associations registered until 25.04.2008, authorized natural persons, individual enterprises and family enterprises.
- **SNC** - General Partnership
- **SCS** - Limited Partnership
- **SCA** - Limited Partnership by Share
- **SA** - Joint-Stock Company
- **SRL** - Limited Liability Company
- **RA** - Autonomous Administration
- **APJ** - Other legal persons having the obligation to register in the trade register: National R&D Institutes, Economic Interest Groupings, European Economic Interest Groupings, European Societies, European Co-operative Societies, Agricultural Co-operatives, Co-operative Organizations.

Sources of Information:

The integrated IT system of the trade register is designed by The National Trade Register Office in compliance with the provisions of the related legislation in force. The source of information consists of the trade registers organized in computerized system, kept by the trade register offices attached to law courts.

Table no. 1

**Operations performed in the trade registers by categories of registration during
December 1990 – May 2009, total by country and by counties, share of counties in
the total by country**

Counties	Total of registered operations		out of which :					
			Registered companies		Changes in statutory documents		Strike off companies	
	No.	%	No.	%	No.	%	No.	%
0	1	2	3	4	5	6	11	12
Total ROMÂNIA	11863493	100,0	1901373	100,0	9381352	100,0	580768	100,0
ALBA	175082	1,5	30236	1,6	138438	1,5	6408	1,1
ARAD	272841	2,3	46423	2,4	214340	2,3	12078	2,1
ARGES	288187	2,4	48644	2,6	228691	2,4	10852	1,9
BACAU	267035	2,3	47408	2,5	206711	2,2	12916	2,2
BIHOR	358360	3,0	58354	3,1	283305	3,0	16701	2,9
BISTRITA-NASAUD	141139	1,2	23236	1,2	110661	1,2	7242	1,2
BOTOSANI	110219	0,9	23332	1,2	80319	0,9	6568	1,1
BRASOV	471965	4,0	59475	3,1	398390	4,2	14100	2,4
BRAILA	188468	1,6	26085	1,4	157645	1,7	4738	0,8
BUZAU	205606	1,7	34422	1,8	159198	1,7	11986	2,1
CARAS-SEVERIN	141381	1,2	23227	1,2	108738	1,2	9416	1,6
CALARASI	107095	0,9	19084	1,0	82514	0,9	5497	0,9
CLUJ	526659	4,4	88201	4,6	419727	4,5	18731	3,2
CONSTANTA	500589	4,2	79182	4,2	392747	4,2	28660	4,9
COVASNA	103990	0,9	16278	0,9	82589	0,9	5123	0,9
DAMBOVITA	171938	1,4	35311	1,9	122008	1,3	14619	2,5
DOLJ	314384	2,7	49851	2,6	249788	2,7	14745	2,5
GALATI	304856	2,6	44973	2,4	244460	2,6	15423	2,7
GIURGIU	93612	0,8	15680	0,8	72478	0,8	5454	0,9
GORJ	189389	1,6	22395	1,2	159913	1,7	7081	1,2
HARGHITA	174102	1,5	29655	1,6	138054	1,5	6393	1,1
HUNEDOARA	239886	2,0	38454	2,0	187195	2,0	14237	2,5
IALOMITA	111186	0,9	17711	0,9	86940	0,9	6535	1,1
IASI	387815	3,3	61628	3,2	311672	3,3	14515	2,5
MARAMURES	242479	2,0	48220	2,5	182003	1,9	12256	2,1
MEHEDINTI	125325	1,1	21117	1,1	95767	1,0	8441	1,5
MURES	334801	2,8	47749	2,5	271660	2,9	15392	2,7
NEAMT	259513	2,2	41044	2,2	202799	2,2	15670	2,7
OLT	145867	1,2	26441	1,4	109624	1,2	9802	1,7
PRAHOVA	401240	3,4	63366	3,3	319916	3,4	17958	3,1
SALAJ	101695	0,9	18826	1,0	76934	0,8	5935	1,0
SATU MARE	184009	1,6	32291	1,7	140426	1,5	11292	1,9
SIBIU	266580	2,2	37220	2,0	219155	2,3	10205	1,8
SUCEAVA	278953	2,4	47550	2,5	213112	2,3	18291	3,1
TELEORMAN	130007	1,1	21616	1,1	103170	1,1	5221	0,9
TIMIS	393133	3,3	67433	3,5	307092	3,3	18608	3,2
TULCEA	142073	1,2	19472	1,0	116704	1,2	5897	1,0
VASLUI	149243	1,3	23907	1,3	116113	1,2	9223	1,6
VALCEA	179196	1,5	30807	1,6	138370	1,5	10019	1,7
VRANCEA	144582	1,2	23020	1,2	116179	1,2	5383	0,9
MUN. BUCURESTI	2357589	19,9	357795	18,8	1876070	20,0	123724	21,3
ILFOV	181424	1,5	34254	1,8	139737	1,5	7433	1,3

Table no. 2

**Operations performed in the trade registers during December 1990 – May 2009,
total by country and counties, share of categories of operations in the total of
each county**

Counties	Total registered operations of		out of which :					
			Registered companies		Changes in statutory documents		Strike off companies	
	No.	%	No.	%	No.	%	No.	%
0	1	2	3	4	5	6	11	12
Total ROMÂNIA	11863493	100,0	1901373	16,0	9381352	79,1	580768	4,9
ALBA	175082	100,0	30236	17,3	138438	79,1	6408	3,7
ARAD	272841	100,0	46423	17,0	214340	78,6	12078	4,4
ARGES	288187	100,0	48644	16,9	228691	79,4	10852	3,8
BACAU	267035	100,0	47408	17,8	206711	77,4	12916	4,8
BIHOR	358360	100,0	58354	16,3	283305	79,1	16701	4,7
BISTRITA-NASAUD	141139	100,0	23236	16,5	110661	78,4	7242	5,1
BOTOSANI	110219	100,0	23332	21,2	80319	72,9	6568	6,0
BRASOV	471965	100,0	59475	12,6	398390	84,4	14100	3,0
BRAILA	188468	100,0	26085	13,8	157645	83,6	4738	2,5
BUZAU	205606	100,0	34422	16,7	159198	77,4	11986	5,8
CARAS-SEVERIN	141381	100,0	23227	16,4	108738	76,9	9416	6,7
CALARASI	107095	100,0	19084	17,8	82514	77,0	5497	5,1
CLUJ	526659	100,0	88201	16,7	419727	79,7	18731	3,6
CONSTANTA	500589	100,0	79182	15,8	392747	78,5	28660	5,7
COVASNA	103990	100,0	16278	15,7	82589	79,4	5123	4,9
DAMBOVITA	171938	100,0	35311	20,5	122008	71,0	14619	8,5
DOLJ	314384	100,0	49851	15,9	249788	79,5	14745	4,7
GALATI	304856	100,0	44973	14,8	244460	80,2	15423	5,1
GIURGIU	93612	100,0	15680	16,8	72478	77,4	5454	5,8
GORJ	189389	100,0	22395	11,8	159913	84,4	7081	3,7
HARGHITA	174102	100,0	29655	17,0	138054	79,3	6393	3,7
HUNEDOARA	239886	100,0	38454	16,0	187195	78,0	14237	5,9
IALOMITA	111186	100,0	17711	15,9	86940	78,2	6535	5,9
IASI	387815	100,0	61628	15,9	311672	80,4	14515	3,7
MARAMURES	242479	100,0	48220	19,9	182003	75,1	12256	5,1
MEHEDINTI	125325	100,0	21117	16,8	95767	76,4	8441	6,7
MURES	334801	100,0	47749	14,3	271660	81,1	15392	4,6
NEAMT	259513	100,0	41044	15,8	202799	78,1	15670	6,0
OLT	145867	100,0	26441	18,1	109624	75,2	9802	6,7
PRAHOVA	401240	100,0	63366	15,8	319916	79,7	17958	4,5
SALAJ	101695	100,0	18826	18,5	76934	75,7	5935	5,8
SATU MARE	184009	100,0	32291	17,5	140426	76,3	11292	6,1
SIBIU	266580	100,0	37220	14,0	219155	82,2	10205	3,8
SUCEAVA	278953	100,0	47550	17,0	213112	76,4	18291	6,6
TELEORMAN	130007	100,0	21616	16,6	103170	79,4	5221	4,0
TIMIS	393133	100,0	67433	17,2	307092	78,1	18608	4,7
TULCEA	142073	100,0	19472	13,7	116704	82,1	5897	4,2
VASLUI	149243	100,0	23907	16,0	116113	77,8	9223	6,2
VALCEA	179196	100,0	30807	17,2	138370	77,2	10019	5,6
VRANCEA	144582	100,0	23020	15,9	116179	80,4	5383	3,7
MUN. BUCURESTI	2357589	100,0	357795	15,2	1876070	79,6	123724	5,2
ILFOV	181424	100,0	34254	18,9	139737	77,0	7433	4,1

Table no.3

Number and structure of incorporations in the trade registers during December 1990 - May 2009

Period (year, month)	Registered companies	Percentage	
	No.	%	%
0	1	2	3
Total, 31 December 2008, out of which	1901373	100,00	
Year 1990	81	0,00	
Year 1991	95840	5,04	
Year 1992	137456	7,23	
Year 1993	117078	6,16	
Year 1994	137445	7,23	
Year 1995	65479	3,44	
Year 1996	62089	3,27	
Year 1997	55663	2,93	
Year 1998	63878	3,36	
Year 1999	57197	3,01	
Year 2000	57291	3,01	
Year 2001	61265	3,22	
Year 2002	84780	4,46	
Year 2003	123582	6,50	
Year 2004	144284	7,59	
Year 2005	159464	8,39	
Year 2006	135371	7,12	
Year 2007	144728	7,61	
Year 2008	144177	7,58	
Year 2009 (I - XII) out of which :	54225		100,0
January	9880		18,2
February	13630		25,1
March	12714		23,4
April	9131		16,8
May	8870		16,3

Note: Column 2 reveals the annual structure of incorporations; column 3 reveals the structure by months during the current year.

Diagram no.1

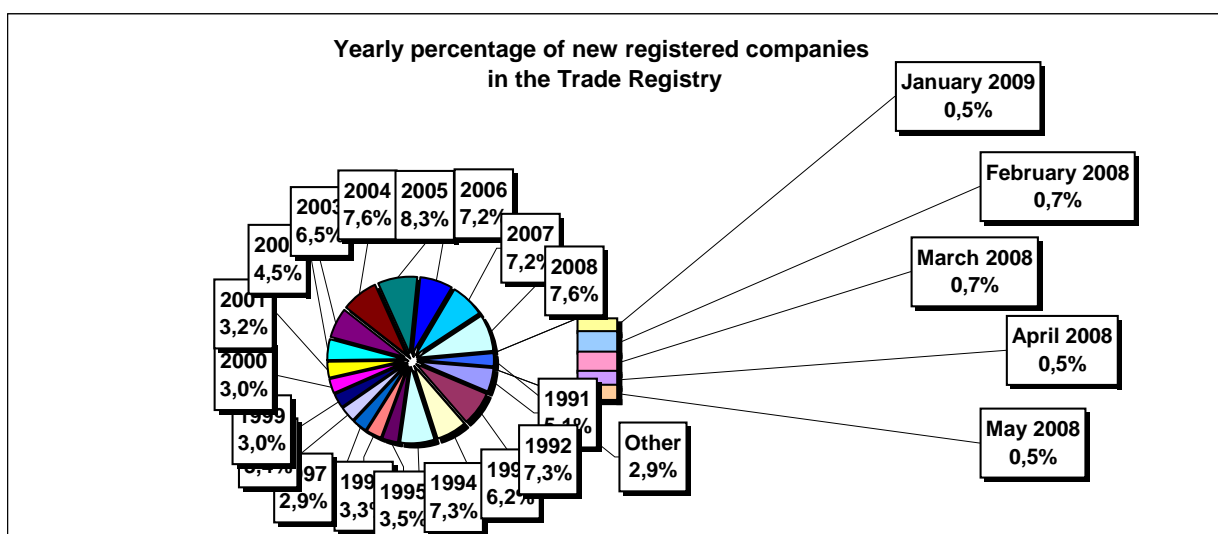


Table no. 4

**Number of incorporations in the trade registers by counties and capital sources during
December 1990 - May 2009**

Counties	Total		out of which:						Ranking by: *	
			Private capital				State majority capital			Mixed capital (state+private)
			out of which:				out of which:			
			PF	Companies	SC	APJ	RA	Companies		Companies
No.	%	No.	No.	No.	No.	No.	No.	No.		
0	1	2	3	4	5	6	6	7	8	9
Total ROMÂNIA	1901373	100,0	509221	1372259	2038	5488	1363	2385	8626	X
ALBA	30236	1,6	10702	19098	36	145	38	47	170	25
ARAD	46424	2,4	17622	28179	60	159	28	41	336	15
ARGES	48644	2,6	15626	32588	48	171	29	30	152	10
BACAU	47408	2,5	16041	30755	150	160	35	42	226	14
BIHOR	58355	3,1	15023	42711	63	148	39	62	309	8
BISTRITA-NASAUD	23236	1,2	8237	14693	46	98	24	29	109	31
BOTOSANI	23332	1,2	10957	11890	40	131	21	174	119	30
BRASOV	59475	3,1	13314	45676	58	119	49	87	172	7
BRAILA	26085	1,4	7183	18522	42	98	28	45	167	28
BUZAU	34422	1,8	10282	23748	46	145	28	42	131	21
CARAS-SEVERIN	23227	1,2	8136	14707	42	105	35	65	137	32
CALARASI	19084	1,0	5838	12948	22	86	18	77	95	2
CLUJ	88201	4,6	23185	64446	62	151	52	41	264	3
CONSTANTA	79182	4,2	15929	62314	87	207	51	51	543	41
COVASNA	16278	0,9	5974	10029	41	69	24	32	109	20
DAMBOVITA	35311	1,9	15937	18948	32	136	29	75	154	9
DOLJ	49850	2,6	11021	38324	39	165	40	58	203	16
GALATI	44973	2,4	10005	34573	35	136	30	51	143	34
GIURGIU	15680,11	0,8	3783	11557	16	83	22	109	110	26
GORJ	22395	1,2	5629	16323	26	184	50	83	100	18
HARGHITA	29655	1,6	12566	16637	64	90	24	43	231	40
HUNEDOARA	38454	2,0	10312	27609	33	82	40	93	285	6
IALOMITA	17711	0,9	6802	10656	27	74	15	46	91	22
IASI	61628	3,2	18484	42444	87	166	34	71	344	11
MARAMURES	48220	2,5	19320	28532	43	126	37	40	123	36
MEHEDINTI	21117	1,1	7119	13751	19	84	19	27	98	12
MURES	47749	2,5	17991	29302	68	156	30	34	168	17
NEAMT	41044	2,2	15209	25380	66	164	29	30	166	27
OLT	26441	1,4	10228	15809	27	164	26	64	123	5
PRAHOVA	63366	3,3	19961	42767	67	177	50	72	272	39
SALAJ	18826	1,0	7446	11120	41	108	19	28	64	23
SATU MARE	32291	1,7	10939	21028	41	89	19	42	134	19
SIBIU	37220	2,0	9861	26900	37	120	34	109	159	13
SUCEAVA	47550	2,5	22492	24462	73	206	31	65	221	35
TELEORMAN	21616	1,1	7693	13488	33	153	21	46	182	4
TIMIS	67433	3,5	11637	55130	69	141	38	69	349	37
TULCEA	19472	1,0	7059	12038	36	66	19	42	212	29
VASLUI	23907	1,3	11543	12040	22	109	16	41	136	24
VALCEA	30807	1,6	12222	18159	64	170	40	38	114	33
VRANCEA	23020	1,2	6985	15731	35	112	16	27	114	1
MUN. BUCURESTI	357794	18,8	28566	327685	64	141	115	104	1120	38
ILFOV	34254	1,8	4362	29562	31	94	21	13	171	42

Table no. 5

**Number of incorporations in the trade registers by counties and business categories
during December 1990 – May 2009**

County	Total		out of which:							
			PF	companies: 1383263				RA	SC	APJ
	SNC	SCS		SRL	SA					
	No.	%	No.	No.	No.	No.	No.	No.	No.	
0	1	2	3	4	5	6	7	8	9	10
Total ROMÂNIA	1901373	100,0	509221	32673	1604	1315478	33508	1363	2038	5488
ALBA	30236	1,6	10702	890	11	17841	573	38	36	145
ARAD	46423	2,4	17622	54	12	27792	696	28	60	159
ARGES	48644	2,6	15626	107	15	31811	837	29	48	171
BACAU	47408	2,5	16041	1299	4	28979	740	35	150	160
BIHOR	58354	3,1	15023	126	47	41984	924	39	63	148
BISTRITA-NASAUD	23236	1,2	8237	146	22	14242	421	24	46	98
BOTOSANI	23332	1,2	10957	468	1	11255	459	21	40	131
BRASOV	59475	3,1	13314	239	20	44790	886	49	58	119
BRAILA	26085	1,4	7183	376	12	17818	528	28	42	98
BUZAU	34422	1,8	10282	3747	46	19537	591	28	46	145
CARAS-SEVERIN	23227	1,2	8136	117	9	14309	474	35	42	105
CALARASI	19084	1,0	5838	609	3	12148	360	18	22	86
CLUJ	88201	4,6	23185	2112	21	61283	1335	52	62	151
CONSTANTA	79182	4,2	15929	311	23	61053	1521	51	87	207
COVASNA	16278	0,9	5974	148	4	9712	306	24	41	69
DAMBOVITA	35311	1,9	15937	60	8	18609	500	29	32	136
DOLJ	49851	2,6	11021	1560	8	36110	908	40	39	165
GALATI	44973	2,4	10005	1574	6	32326	861	30	35	136
GIURGIU	15680,11	0,8	3783	35	8	11403	330	22	16	83
GORJ	22395	1,2	5629	29	1	15974	502	50	26	184
HARGHITA	29655	1,6	12566	62	7	16345	497	24	64	90
HUNEDOARA	38454	2,0	10312	1166	98	26032	691	40	33	82
IALOMITA	17711	0,9	6802	268	12	10159	354	15	27	74
IASI	61628	3,2	18484	507	111	41210	1029	34	87	166
MARAMURES	48220	2,5	19320	1927	23	26139	605	37	43	126
MEHEDINTI	21117	1,1	7119	427	3	13106	340	19	19	84
MURES	47749	2,5	17991	37	34	28750	683	30	68	156
NEAMT	41044	2,2	15209	3293	30	21570	683	29	66	164
OLT	26441	1,4	10228	1611	1	13882	502	26	27	164
PRAHOVA	63366	3,3	19961	3122	15	39047	927	50	67	177
SALAJ	18826	1,0	7446	600	4	10309	299	19	41	108
SATU MARE	32291	1,7	10939	283	9	20430	481	19	41	89
SIBIU	37220	2,0	9861	778	49	25665	676	34	37	120
SUCEAVA	47550	2,5	22492	438	8	23704	598	31	73	206
TELEORMAN	21616	1,1	7693	272	399	12615	430	21	33	153
TIMIS	67433	3,5	11637	615	33	53618	1282	38	69	141
TULCEA	19472	1,0	7059	1363	114	10331	484	19	36	66
VASLUI	23907	1,3	11543	90	13	11691	423	16	22	109
VALCEA	30807	1,6	12222	364	6	17437	504	40	64	170
VRANCEA	23020	1,2	6985	356	10	15043	463	16	35	112
MUN. BUCURESTI	357795	18,8	28566	1038	312	320402	7157	115	64	141
ILFOV	34254	1,8	4362	49	32	29017	648	21	31	94

Table no. 6

**Operations performed in the trade registers by counties and categories of registration
in the month of May 2009**

County	Total of operations carried on		out of which:					
			New incorporations		Changes in statutory documents		Strike off companies	
	No.	%	No.	%	No.	%	No.	%
0	1	2	3	4	5	6	9	10
Total ROMÂNIA	229626	100,0	8870	3,9	216416	94,2	4340	1,9
ALBA	3773	100,0	147	3,9	3556	94,2	70	1,9
ARAD	4757	100,0	241	5,1	4419	92,9	97	2,0
ARGES	6853	100,0	244	3,6	6510	95,0	99	1,4
BACAU	6480	100,0	229	3,5	6192	95,6	59	0,9
BIHOR	7638	100,0	288	3,8	7259	95,0	91	1,2
BISTRITA-NASAUD	4195	100,0	113	2,7	3981	94,9	101	2,4
BOTOSANI	3164	100,0	150	4,7	2926	92,5	88	2,8
BRASOV	8509	100,0	312	3,7	8029	94,4	168	2,0
BRAILA	3392	100,0	159	4,7	3145	92,7	88	2,6
BUZAU	3697	100,0	132	3,6	3480	94,1	85	2,3
CARAS-SEVERIN	2379	100,0	89	3,7	2244	94,3	46	1,9
CALARASI	2344	100,0	100	4,3	2199	93,8	45	1,9
CLUJ	10972	100,0	369	3,4	10370	94,5	233	2,1
CONSTANTA	8996	100,0	386	4,3	8524	94,8	86	1,0
COVASNA	2452	100,0	66	2,7	2347	95,7	39	1,6
DAMBOVITA	3590	100,0	166	4,6	3321	92,5	103	2,9
DOLJ	5878	100,0	214	3,6	5545	94,3	119	2,0
GALATI	5773	100,0	227	3,9	5443	94,3	103	1,8
GIURGIU	1769	100,0	90	5,1	1655	93,6	24	1,4
GORJ	2939	100,0	85	2,9	2812	95,7	42	1,4
HARGHITA	3542	100,0	136	3,8	3234	91,3	172	4,9
HUNEDOARA	3747	100,0	200	5,3	3470	92,6	77	2,1
IALOMITA	1803	100,0	101	5,6	1658	92,0	44	2,4
IASI	8539	100,0	424	5,0	7875	92,2	240	2,8
MARAMURES	5519	100,0	202	3,7	5226	94,7	91	1,6
MEHEDINTI	1712	100,0	97	5,7	1570	91,7	45	2,6
MURES	5838	100,0	221	3,8	5505	94,3	112	1,9
NEAMT	4620	100,0	173	3,7	4331	93,7	116	2,5
OLT	3277	100,0	103	3,1	3012	91,9	162	4,9
PRAHOVA	7213	100,0	291	4,0	6776	93,9	146	2,0
SALAJ	2643	100,0	82	3,1	2504	94,7	57	2,2
SATU MARE	3629	100,0	155	4,3	3411	94,0	63	1,7
SIBIU	10361	100,0	188	1,8	10064	97,1	109	1,1
SUCEAVA	3641	100,0	184	5,1	3413	93,7	44	1,2
TELEORMAN	3397	100,0	152	4,5	3200	94,2	45	1,3
TIMIS	5155	100,0	318	6,2	4667	90,5	170	3,3
TULCEA	2348	100,0	73	3,1	2257	96,1	18	0,8
VASLUI	2073	100,0	115	5,5	1937	93,4	21	1,0
VALCEA	4897	100,0	108	2,2	4656	95,1	133	2,7
VRANCEA	3032	100,0	82	2,7	2889	95,3	61	2,0
MUN. BUCURESTI	39183	100,0	1380	3,5	37228	95,0	575	1,5
ILFOV	3907	100,0	278	7,1	3576	91,5	53	1,4

Table no.7

Number of incorporations in the trade registers by counties and capital sources in the month of May 2009

County	Total		out of which:						Rnking by: *	
			Private capital				State majority capital			Mixed capital (state+private)
			out of which:				out of which:			
			PF	Companies	SC	APJ	RA	Companies		Companies
No.	%	No.	No.	No.		No.	No.	No.		
0	1	2	3	4	5		6	7	8	9
Total ROMÂNIA	8870	100,0	4743	4115	1	3	5	6	2	X
ALBA	147	1,7	87	60						26
ARAD	241	2,7	132	108			1	1		11
ARGES	244	2,8	132	112						10
BACAU	229	2,6	145	84						12
BIHOR	288	3,2	174	114						8
BISTRITA-NASAUD	113	1,3	65	48						30
BOTOSANI	150	1,7	119	30		1				25
BRASOV	312	3,5	153	157		1	1	1		6
BRAILA	159	1,8	111	48						22
BUZAU	132	1,5	75	57						28
CARAS-SEVERIN	89	1,0	41	48						37
CALARASI	100	1,1	67	33						4
CLUJ	369	4,2	205	163					1	3
CONSTANTA	386	4,4	165	221						42
COVASNA	66	0,7	48	18						21
DAMBOVITA	166	1,9	106	60						15
DOLJ	214	2,4	108	106						13
GALATI	227	2,6	119	108						38
GIURGIU	90	1,0	40	49	1					27
GORJ	85	1,0	47	38						17
HARGHITA	136	1,5	93	42			1	1		33
HUNEDOARA	200	2,3	113	87						2
IALOMITA	101	1,1	70	31						9
IASI	424	4,8	266	158						16
MARAMURES	202	2,3	134	67		1				35
MEHEDINTI	97	1,1	67	30						14
MURES	221	2,5	140	81						20
NEAMT	173	2,0	112	61						32
OLT	103	1,2	53	50						7
PRAHOVA	291	3,3	153	138						23
SALAJ	82	0,9	49	33						39
SATU MARE	155	1,7	92	63						18
SIBIU	188	2,1	104	83				1		19
SUCEAVA	184	2,1	102	81			1	1		24
TELEORMAN	152	1,7	96	56						5
TIMIS	318	3,6	129	188					1	41
TULCEA	73	0,8	42	30			1	1		29
VASLUI	115	1,3	97	18						31
VALCEA	108	1,2	76	32						40
VRANCEA	82	0,9	46	36						1
MUN. BUCURESTI	1380	15,6	498	882						34
ILFOV	278	3,1	72	206						36

*) The total number of incorporations (col 1)

*** Less than 0,01%

Table no. 9

Number of incorporations in the trade registers by domains of activity and business categories in the month of May 2009

CAEN segment	Field of activity	Total		out of which:							
				PF	companies: 4118				RA	SC	APJ
					SNC	SCS	SRL	SA			
					No.	No.	No.	No.			
0	1	2	3	4	5	6	7	8	9	10	11
	Total ROMÂNIA	8870	100,0	4743		1	4092	25	5	1	3
1	Agriculture, hunting and related service activities	454	5,1	341			110				3
2	Forestry and logging	35	0,4	5			25		5		
3	Fishing and aquaculture	66	0,7	61			5				
5	Mining of hard and brown coal	2	0,0				2				
6	Extraction of crude petroleum and natural gas	1	0,0					1			
7	Mining of metal ores										
8	Other mining and quarrying	19	0,2				19				
9	Mining support service activities	1	0,0					1			
10	Manufacture of food products	82	0,9	33			49				
11	Manufacture of beverages	23	0,3	16			7				
12	Manufacture of tobacco products										
13	Manufacture of textiles	14	0,2	7			7				
14	Manufacture of wearing apparel	50	0,6	29			21				
15	Tanning and dressing of leather; manufacture of luggage, handbags, saddlery, harness and footwear; dressing and dyeing of fur	16	0,2	6			10				
16	Manufacture of wood and of products of wood and cork, except furniture; manufacture of articles of straw and plaiting materials	54	0,6	29			25				
17	Manufacture of paper and paper products	12	0,1	4			8				
18	Printing and reproduction of recorded media	22	0,2	7			15				
19	Manufacture of coke and refined petroleum products	1	0,0				1				
20	Manufacture of chemicals and chemical products	2	0,0				2				
21	Manufacture of basic pharmaceutical products and pharmaceutical preparations										
22	Manufacture of rubber and plastic products	31	0,3	11			20				
23	Manufacture of other non-metallic mineral products	59	0,7	31			27	1			
24	Manufacture of basic metals	6	0,1	3			3				
25	Manufacture of fabricated metal products, except machinery and equipment	102	1,1	66			35	1			
26	Manufacture of computer, electronic and optical products	6	0,1	1			5				
27	Manufacture of electrical equipment	4	0,0				4				
28	Manufacture of machinery and equipment n.e.c.	7	0,1				7				
29	Manufacture of motor vehicles, trailers and semi-trailers	3	0,0	1			2				
30	Manufacture of other transport equipment	4	0,0	1			3				
31	Manufacture of furniture	27	0,3	10			17				
32	Other manufacturing	36	0,4	21			15				
33	Repair and installation of machinery and equipment	39	0,4	17			21	1			
35	Electricity, gas, steam and air conditioning supply	23	0,3				22	1			
36	Water collection, treatment and supply	1	0,0				1				
37	Sewerage	6	0,1	1			5				
38	Waste collection, treatment and disposal activities; materials recovery	28	0,3	1			27				
39	Remediation activities and other waste management services										
41	Construction of buildings	777	8,8	52			723	2			
42	Civil engineering	53	0,6	2			51				
43	Specialised construction activities	526	5,9	122			403	1			
45	Wholesale and retail trade and repair of motor vehicles and motorcycles	270	3,0	39			231				
46	Wholesale trade, except of motor vehicles and motorcycles	1057	11,9	207			850				
47	Retail trade, except of motor vehicles and motorcycles	1759	19,8	590			1165	3		1	
49	Land transport and transport via pipelines	551	6,2	198			353				
50	Water transport	5	0,1	1			4				

Table no. 10

Number of incorporated trading companies and the value of the subscribed share capital, by counties, in the month of May 2009

County	Total registered companies		Subscribed capital		Average subscribed capital on company
	No.	%	thousand Lei	%	thousand Lei
0	1	2	3	4	5
Total ROMÂNIA	4118	100,0	303178,9	100,0	74,0
ALBA	60	1,5	178,5	0,1	3,0
ARAD	108	2,6	177,6	0,1	1,6
ARGES	112	2,7	174,2	0,1	1,6
BACAU	84	2,0	3775,5	1,2	44,9
BIHOR	114	2,8	86457,2	28,5	771,9
BISTRITA-NASAUD	48	1,2	26,5	***	0,6
BOTOSANI	30	0,7	111,3	0,0	3,7
BRASOV	157	3,8	11135,5	3,7	70,9
BRAILA	48	1,2	1021,5	0,3	21,3
BUZAU	57	1,4	134,6	0,0	2,4
CARAS-SEVERIN	48	1,2	36,0	0,0	0,8
CALARASI	33	0,8	42,0	0,0	1,3
CLUJ	164	4,0	132,0	0,0	0,8
CONSTANTA	221	5,4	1407,0	0,5	6,4
COVASNA	18	0,4	388,2	0,1	21,6
DAMBOVITA	60	1,5	44,3	0,0	0,7
DOLJ	106	2,6	263,3	0,1	2,5
GALATI	108	2,6	84,0	0,0	0,8
GIURGIU	49	1,2	83517,0	27,5	1704,4
GORJ	38	0,9	122,6	0,0	3,2
HARGHITA	42	1,0	17,6	***	0,4
HUNEDOARA	87	2,1	1153,9	0,4	13,4
IALOMITA	31	0,8	115,1	0,0	3,7
IASI	158	3,8	157,0	0,1	1,0
MARAMURES	67	1,6	1219,5	0,4	18,2
MEHEDINTI	30	0,7	17,3	***	0,6
MURES	81	2,0	21354,9	7,0	263,6
NEAMT	61	1,5	214,7	0,1	3,5
OLT	50	1,2	15,4	***	0,3
PRAHOVA	138	3,4	20699,5	6,8	150,0
SALAJ	33	0,8	12,5	***	0,4
SATU MARE	63	1,5	18,7	***	0,3
SIBIU	84	2,0	167,8	0,1	2,0
SUCEAVA	81	2,0	8022,9	2,6	99,0
TELEORMAN	56	1,4	13,7	***	0,2
TIMIS	189	4,6	116,8	0,0	0,6
TULCEA	30	0,7	11,2	***	0,4
VASLUI	18	0,4	3,6	***	0,2
VALCEA	32	0,8	9,7	***	0,3
VRANCEA	36	0,9	665,7	0,2	18,5
MUN. BUCURESTI	882	21,4	56533,2	18,6	65,0
ILFOV	206	5,0	3409,4	1,1	16,6

Note: The average does not include filials because according to the Law no.31/1990 they are not juridical persons

*** Less than 0,01%

Table no. 11

Number of incorporated trading companies and the value of the subscribed share capital by legal forms, in the month of May 2009

Company type	Total registered companies		Subscribed capital		Average subscribed capital on company
	No.	%	thousand Lei	%	thousand Lei
0	1	2	3	4	5
Total ROMÂNIA	4118	100,0	303178,9	100,0	74,0
SNC					
SCS	1	0,0	1,0	***	
SA	25	0,6	127465,0	42,0	6708,7
SRL	4092	99,4	175712,9	58,0	43,1

Note: The average does not include filials because according to the Law no.31/1990 they are not juridical persons

*** Less than 0,01%

Diagram no.5

