



MINISTRY OF JUSTICE

THE NATIONAL TRADE REGISTER OFFICE

București, Bd. Unirii nr. 74, Bl. J3b, tronson II+III, sector 3; Telefon: +40 21 316.08.04, 316.08.10; Fax: +40 21 316.08.03; Cod poștal: 030837
Website: www.onrc.ro; E-mail: onrc@onrc.ro; Cod identificare Fiscală: 14942091

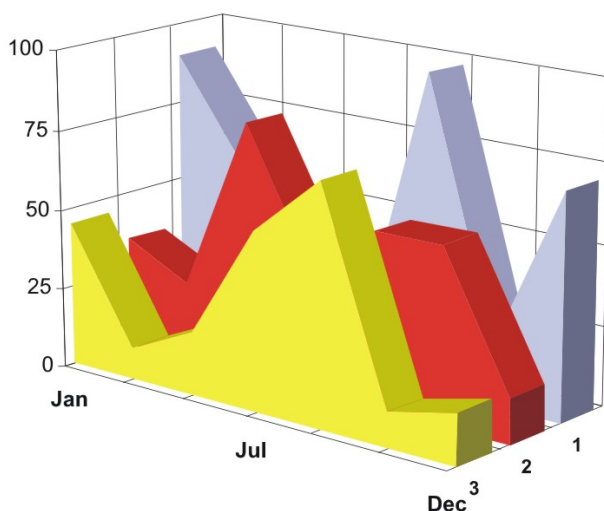
OPERATIONS IN THE CENTRAL TRADE REGISTER

STATISTIC SYNTHESIS

OF

RECORDS IN THE CENTRAL TRADE REGISTER

- 30th April 2009 - provisional data -



- ISSUE No. 209 -

**MINISTRY OF JUSTICE
THE NATIONAL TRADE REGISTER OFFICE**

- Operations such as incorporation of trading companies, submission of changes, and strike-off are carried out based on Law No.26/1990, as republished, Law No.31/1990, as republished and on the Methodological Norms no. P/608/1998.

- This work reflects the evolution of the operations with the Trade Register Office attached to Bucharest Law Court and the Trade Register Offices attached to County Law Courts.

- The data contained in the Central Trade Register refer to operations for which law sets out the obligation of being registered in the trade registers kept by the 42 trade register offices attached to law courts.

• The content of this publication shall not be reproduced, partly or entirely, in original or modified form, and shall not be stored in a recovery system and shall not be transmitted in any form or by any means without prior written authorization of the Ministry of Justice – The National Trade Register Office.

• The content of this publication shall not be used in articles, studies, books, as supporting or explanatory data only by clearly and accurately indicating the source.

CONTENTS

Page

1	Definitions	1
2.1	Data related to the period December 1990 –April 2009	3
<hr/>		
	Table no. 1 – Operations performed in the trade registers by categories of registration during December 1990 –April 2009, total by country and by counties, shares of counties in the total by country	3
	Table no. 2 – Operations performed in the trade registers by categories of registration during December 1990 –April 2009, total by country and counties, share of categories of operations in the total of each county	4
	Table no. 3 – Number and structure of incorporations in the trade registers during December 1990-April 2009	5
	Chart no. 1 – Structure by years of incorporations in the trade register	
	Table no. 4 – Number of incorporations in the trade registers by counties and capital sources during December 1990 - April 2009	6
	Table no. 5 – Number of incorporations in the trade registers by counties and business categories during December 1990 –April 2009	7
<hr/>		
2.2	Data related to April 2009	8
<hr/>		
	Table no. 6 – Operations performed in the trade registers by counties and categories of registrations in the month of April 2009	8
	Table no. 7 – Number of incorporations in the trade registers by counties and capital sources in the month of April 2009	9
	Table no. 8 – Number of incorporations in the trade registers by counties and business categories in the month of April 2009	10
	Table no. 9 –Number of incorporations in the trade registers by domains of activity and business categories in the month of April 2009	11-12
	Table no. 10 – Number of incorporated trading companies and the value of subscribed share capital, by counties, in the month of April 2009	13
	Table no. 11– Number of incorporated trading companies and the value of subscribed share capital by legal forms, in the month of April 2009	14
	Chart no. 5 – Average value of subscribed share capital by types of trading companies in the month of April 2009	14

Definitions

The Trade Register Office was established based on Law No. 26/1990, as republished and subsequently amended and supplemented, operates as an active institution since December 1990 and is twofold structured:

- at national level, represented by the National Trade Register Office organized under the authority of the Ministry of Justice
- at local level, represented by the 42 Trade Register Offices attached to Law Courts, organized under the subordination of the National Trade Register Office

Categories of persons liable to registration in the trade register:

- natural persons: authorized natural persons, individual enterprises and family enterprises currently carrying on trading activities;
 - legal persons represented by: Trading Companies, National Societies and Companies, National R&D Institutes, Autonomous Administrations, Co-operative Societies, Agricultural Co-operatives, Co-operative Organizations, Economic Interest Groupings, European Economic Interest Groupings, European Societies, European Co-operative Societies, branches of trading companies with legal establishment, operation and incorporation regime of trading company legal form under which they were incorporated.
- **Terms used in tables and charts**
- **Number of companies**, depending on the table, represents the number of trading companies incorporated during the reference period, the number of trading companies struck-off from the trade register. The following forms of organization are included: limited liability companies, joint-stock companies, limited partnerships by share, limited partnerships, general partnerships, and branches thereof.
 - **Value of subscribed share capital:**
 - **total, expressed in national currency:** the share capital value resulted by adding up the subscribed values (in cash and in kind) in national currency (lei)

➤ **Regions of economic development:**

<i>North-East:</i>	Suceava, Botoșani, Neamț, Iași, Bacău, Vaslui.
<i>South-East:</i>	Vrancea, Galați, Buzău, Brăila, Tulcea, Constanța.
<i>South-Muntenia:</i>	Argeș, Dâmbovița, Prahova, Teleorman, Giurgiu, Călărași, Ialomița.
<i>South-West Oltenia:</i>	Gorj, Vâlcea, Dolj, Mehedinți, Olt.
<i>West:</i>	Arad, Caraș-Severin, Hunedoara, Timiș.
<i>North-West:</i>	Bihor, Bistrița, Cluj, Satu Mare, Sălaj, Maramureș.
<i>Center:</i>	Alba, Brașov, Covasna, Harghita, Mureș, Sibiu.
<i>Bucharest-Ilfov:</i>	București, Ilfov.

NACE Code – The classification of economic activities in the national economy was approved by GO No. 656/1997, amended by Order No 601/2002 and Order no. 337/2007 of the President of the National Institute of Statistics, and complies with the international classification used in statistic reports and official documents. The activities are ranked by the harmonization principle, by sections, divisions, groups and classes.

Abbreviations

- **PF** - Natural Person; the following forms of organization are included in this category: natural persons and family associations registered until 25.04.2008, authorized natural persons, individual enterprises and family enterprises.
- **SNC** - General Partnership
- **SCS** - Limited Partnership
- **SCA** - Limited Partnership by Share
- **SA** - Joint-Stock Company
- **SRL** - Limited Liability Company
- **RA** - Autonomous Administration
- **APJ** - Other legal persons having the obligation to register in the trade register: National R&D Institutes, Economic Interest Groupings, European Economic Interest Groupings, European Societies, European Co-operative Societies, Agricultural Co-operatives, Co-operative Organizations.

Sources of Information:

The integrated IT system of the trade register is designed by The National Trade Register Office in compliance with the provisions of the related legislation in force. The source of information consists of the trade registers organized in computerized system, kept by the trade register offices attached to law courts.

Table no. 1

**Operations performed in the trade registers by categories of registration during
December 1990 – April 2009, total by country and by counties, share of counties
in the total by country**

Counties	Total of registered operations		out of which :					
			Registered companies		Changes in statutory documents		Strike off companies	
	No.	%	No.	%	No.	%	No.	%
0	1	2	3	4	5	6	11	12
Total ROMÂNIA	11633867	100,0	1892503	100,0	9164936	100,0	576428	100,0
ALBA	171309	1,5	30089	1,6	134882	1,5	6338	1,1
ARAD	268084	2,3	46182	2,4	209921	2,3	11981	2,1
ARGES	281334	2,4	48400	2,6	222181	2,4	10753	1,9
BACAU	260555	2,2	47179	2,5	200519	2,2	12857	2,2
BIHOR	350722	3,0	58066	3,1	276046	3,0	16610	2,9
BISTRITA-NASAUD	136944	1,2	23123	1,2	106680	1,2	7141	1,2
BOTOSANI	107055	0,9	23182	1,2	77393	0,8	6480	1,1
BRASOV	463456	4,0	59163	3,1	390361	4,3	13932	2,4
BRAILA	185076	1,6	25926	1,4	154500	1,7	4650	0,8
BUZAU	201909	1,7	34290	1,8	155718	1,7	11901	2,1
CARAS-SEVERIN	139002	1,2	23138	1,2	106494	1,2	9370	1,6
CALARASI	104751	0,9	18984	1,0	80315	0,9	5452	0,9
CLUJ	515687	4,4	87832	4,6	409357	4,5	18498	3,2
CONSTANTA	491593	4,2	78796	4,2	384223	4,2	28574	5,0
COVASNA	101538	0,9	16212	0,9	80242	0,9	5084	0,9
DAMBOVITA	168348	1,4	35145	1,9	118687	1,3	14516	2,5
DOLJ	308506	2,7	49637	2,6	244243	2,7	14626	2,5
GALATI	299083	2,6	44746	2,4	239017	2,6	15320	2,7
GIURGIU	91843	0,8	15590	0,8	70823	0,8	5430	0,9
GORJ	186450	1,6	22310	1,2	157101	1,7	7039	1,2
HARGHITA	170560	1,5	29519	1,6	134820	1,5	6221	1,1
HUNEDOARA	236139	2,0	38254	2,0	183725	2,0	14160	2,5
IALOMITA	109383	0,9	17610	0,9	85282	0,9	6491	1,1
IASI	379276	3,3	61204	3,2	303797	3,3	14275	2,5
MARAMURES	236960	2,0	48018	2,5	176777	1,9	12165	2,1
MEHEDINTI	123613	1,1	21020	1,1	94197	1,0	8396	1,5
MURES	328963	2,8	47528	2,5	266155	2,9	15280	2,7
NEAMT	254893	2,2	40871	2,2	198468	2,2	15554	2,7
OLT	142590	1,2	26338	1,4	106612	1,2	9640	1,7
PRAHOVA	394027	3,4	63075	3,3	313140	3,4	17812	3,1
SALAJ	99052	0,9	18744	1,0	74430	0,8	5878	1,0
SATU MARE	180380	1,6	32136	1,7	137015	1,5	11229	1,9
SIBIU	256219	2,2	37032	2,0	209091	2,3	10096	1,8
SUCEAVA	275312	2,4	47366	2,5	209699	2,3	18247	3,2
TELEORMAN	126610	1,1	21464	1,1	99970	1,1	5176	0,9
TIMIS	387978	3,3	67115	3,5	302425	3,3	18438	3,2
TULCEA	139725	1,2	19399	1,0	114447	1,2	5879	1,0
VASLUI	147170	1,3	23792	1,3	114176	1,2	9202	1,6
VALCEA	174299	1,5	30699	1,6	133714	1,5	9886	1,7
VRANCEA	141550	1,2	22938	1,2	113290	1,2	5322	0,9
MUN. BUCURESTI	2318406	19,9	356415	18,8	1838842	20,1	123149	21,4
ILFOV	177517	1,5	33976	1,8	136161	1,5	7380	1,3

Table no. 2

**Operations performed in the trade registers during December 1990 – April 2009,
total by country and counties, share of categories of operations in the total of
each county**

Counties	Total of registered operations		out of which :					
			Registered companies		Changes in statutory documents		Strike off companies	
	No.	%	No.	%	No.	%	No.	%
0	1	2	3	4	5	6	11	12
Total ROMÂNIA	11633867	100,0	1892503	16,3	9164936	78,8	576428	5,0
ALBA	171309	100,0	30089	17,6	134882	78,7	6338	3,7
ARAD	268084	100,0	46182	17,2	209921	78,3	11981	4,5
ARGES	281334	100,0	48400	17,2	222181	79,0	10753	3,8
BACAU	260555	100,0	47179	18,1	200519	77,0	12857	4,9
BIHOR	350722	100,0	58066	16,6	276046	78,7	16610	4,7
BISTRITA-NASAUD	136944	100,0	23123	16,9	106680	77,9	7141	5,2
BOTOSANI	107055	100,0	23182	21,7	77393	72,3	6480	6,1
BRASOV	463456	100,0	59163	12,8	390361	84,2	13932	3,0
BRAILA	185076	100,0	25926	14,0	154500	83,5	4650	2,5
BUZAU	201909	100,0	34290	17,0	155718	77,1	11901	5,9
CARAS-SEVERIN	139002	100,0	23138	16,6	106494	76,6	9370	6,7
CALARASI	104751	100,0	18984	18,1	80315	76,7	5452	5,2
CLUJ	515687	100,0	87832	17,0	409357	79,4	18498	3,6
CONSTANTA	491593	100,0	78796	16,0	384223	78,2	28574	5,8
COVASNA	101538	100,0	16212	16,0	80242	79,0	5084	5,0
DAMBOVITA	168348	100,0	35145	20,9	118687	70,5	14516	8,6
DOLJ	308506	100,0	49637	16,1	244243	79,2	14626	4,7
GALATI	299083	100,0	44746	15,0	239017	79,9	15320	5,1
GIURGIU	91843	100,0	15590	17,0	70823	77,1	5430	5,9
GORJ	186450	100,0	22310	12,0	157101	84,3	7039	3,8
HARGHITA	170560	100,0	29519	17,3	134820	79,0	6221	3,6
HUNEDOARA	236139	100,0	38254	16,2	183725	77,8	14160	6,0
IALOMITA	109383	100,0	17610	16,1	85282	78,0	6491	5,9
IASI	379276	100,0	61204	16,1	303797	80,1	14275	3,8
MARAMURES	236960	100,0	48018	20,3	176777	74,6	12165	5,1
MEHEDINTI	123613	100,0	21020	17,0	94197	76,2	8396	6,8
MURES	328963	100,0	47528	14,4	266155	80,9	15280	4,6
NEAMT	254893	100,0	40871	16,0	198468	77,9	15554	6,1
OLT	142590	100,0	26338	18,5	106612	74,8	9640	6,8
PRAHOVA	394027	100,0	63075	16,0	313140	79,5	17812	4,5
SALAJ	99052	100,0	18744	18,9	74430	75,1	5878	5,9
SATU MARE	180380	100,0	32136	17,8	137015	76,0	11229	6,2
SIBIU	256219	100,0	37032	14,5	209091	81,6	10096	3,9
SUCEAVA	275312	100,0	47366	17,2	209699	76,2	18247	6,6
TELEORMAN	126610	100,0	21464	17,0	99970	79,0	5176	4,1
TIMIS	387978	100,0	67115	17,3	302425	77,9	18438	4,8
TULCEA	139725	100,0	19399	13,9	114447	81,9	5879	4,2
VASLUI	147170	100,0	23792	16,2	114176	77,6	9202	6,3
VALCEA	174299	100,0	30699	17,6	133714	76,7	9886	5,7
VRANCEA	141550	100,0	22938	16,2	113290	80,0	5322	3,8
MUN. BUCURESTI	2318406	100,0	356415	15,4	1838842	79,3	123149	5,3
ILFOV	177517	100,0	33976	19,1	136161	76,7	7380	4,2

Table no.3

Number and structure of incorporations in the trade registers during December 1990 - April 2009

Period (year, month)	Registered companies	Percentage	
	No.	%	%
0	1	2	3
Total, 31 December 2008, out of which	1892503	98,85	
Year 1990	81	0,00	
Year 1991	95840	5,06	
Year 1992	137456	7,26	
Year 1993	117078	6,19	
Year 1994	137445	7,26	
Year 1995	65479	3,46	
Year 1996	62089	3,28	
Year 1997	55663	2,94	
Year 1998	63878	3,38	
Year 1999	57197	3,02	
Year 2000	57291	3,03	
Year 2001	61265	3,24	
Year 2002	84780	4,48	
Year 2003	123582	6,53	
Year 2004	144284	7,62	
Year 2005	159464	8,43	
Year 2006	135371	7,15	
Year 2007	144728	7,65	
Year 2008	144177	7,62	
Year 2009 (I - XII) out of which :	23510		192,9
January	9880		42,0
February	13630		58,0
March	12714		54,1
April	9131		38,8

Note: Column 2 reveals the annual structure of incorporations; column 3 reveals the structure by months during the current year.

Diagram no.1

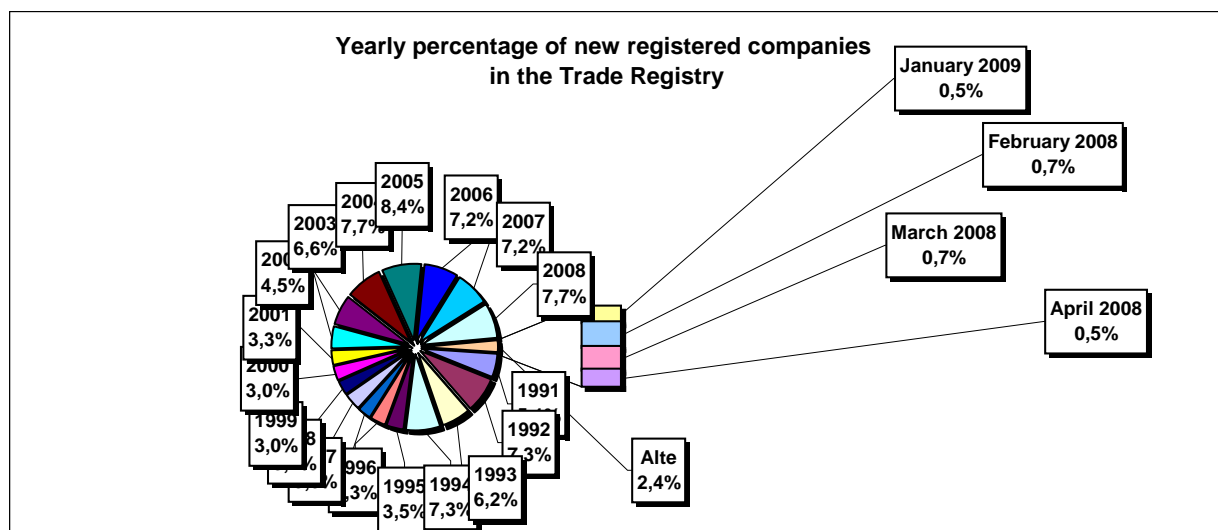


Table no. 4

**Number of incorporations in the trade registers by counties and capital sources during
December 1990 - April 2009**

Counties	Total		out of which:						Ranking by: *	
			Private capital				State majority capital			Mixed capital (state+private)
			out of which:				out of which:			
			PF	Companies	SC	APJ	RA	Companies		Companies
No.	%	No.	No.	No.	No.	No.	No.			
0	1	2	3	4	5	6	7	8	9	
Total ROMÂNIA	1892503	100,0	504478	1368144	2037	5485	1358	2384	8624	X
ALBA	30089	1,6	10615	19038	36	145	38	47	170	1
ARAD	46183	2,4	17490	28071	60	159	27	41	336	2
ARGES	48400	2,6	15494	32476	48	171	29	30	152	3
BACAU	47179	2,5	15896	30671	150	160	35	42	226	4
BIHOR	58067	3,1	14849	42597	63	148	39	62	309	5
BISTRITA-NASAUD	23123	1,2	8172	14645	46	98	24	29	109	6
BOTOSANI	23182	1,2	10838	11860	40	130	21	174	119	7
BRASOV	59163	3,1	13161	45519	58	118	48	87	172	8
BRAILA	25926	1,4	7072	18474	42	98	28	45	167	9
BUZAU	34290	1,8	10207	23691	46	145	28	42	131	10
CARAS-SEVERIN	23138	1,2	8095	14659	42	105	35	65	137	11
CALARASI	18984	1,0	5771	12915	22	86	18	77	95	12
CLUJ	87832	4,6	22980	64283	62	151	52	41	263	13
CONSTANTA	78796	4,2	15764	62093	87	207	51	51	543	14
COVASNA	16212	0,9	5926	10011	41	69	24	32	109	15
DAMBOVITA	35145	1,9	15831	18888	32	136	29	75	154	16
DOLJ	49636	2,6	10913	38218	39	165	40	58	203	17
GALATI	44746	2,4	9886	34465	35	136	30	51	143	18
GIURGIU	15590	0,8	3743	11508	15	83	22	109	110	19
GORJ	22310	1,2	5582	16285	26	184	50	83	100	20
HARGHITA	29519	1,6	12473	16595	64	90	23	43	231	21
HUNEDOARA	38254	2,0	10199	27522	33	82	40	93	285	22
IALOMITA	17610	0,9	6732	10625	27	74	15	46	91	23
IASI	61204	3,2	18218	42286	87	166	34	71	344	24
MARAMURES	48018	2,5	19186	28465	43	125	37	40	123	25
MEHEDINTI	21020	1,1	7052	13721	19	84	19	27	98	26
MURES	47528	2,5	17851	29221	68	156	30	34	168	27
NEAMT	40871	2,2	15097	25319	66	164	29	30	166	28
OLT	26338	1,4	10175	15759	27	164	26	64	123	29
PRAHOVA	63075	3,3	19808	42629	67	177	50	72	272	30
SALAJ	18744	1,0	7397	11087	41	108	19	28	64	31
SATU MARE	32136	1,7	10847	20965	41	89	19	42	134	32
SIBIU	37032	2,0	9757	26817	37	120	34	108	159	33
SUCEAVA	47366	2,5	22390	24381	73	206	30	65	221	34
TELEORMAN	21464	1,1	7597	13432	33	153	21	46	182	35
TIMIS	67115	3,5	11508	54942	69	141	38	69	348	36
TULCEA	19399	1,0	7017	12008	36	66	18	42	212	37
VASLUI	23792	1,3	11446	12022	22	109	16	41	136	38
VALCEA	30699	1,6	12146	18127	64	170	40	38	114	39
VRANCEA	22938	1,2	6939	15695	35	112	16	27	114	40
MUN. BUCURESTI	356414	18,8	28068	326803	64	141	115	104	1120	41
ILFOV	33976	1,8	4290	29356	31	94	21	13	171	42

Table no. 5

**Number of incorporations in the trade registers by counties and business categories
during December 1990 – April 2009**

County	Total		out of which:							
			PF	companies: 1379145				RA	SC	APJ
	SNC	SCS		SRL	SA					
	No.	%	No.	No.	No.	No.	No.	No.	No.	
0	1	2	3	4	5	6	7	8	9	10
Total ROMÂNIA	1892503	100,0	504478	32673	1603	1311386	33483	1358	2037	5485
ALBA	30089	1,6	10615	890	11	17781	573	38	36	145
ARAD	46182	2,4	17490	54	12	27684	696	27	60	159
ARGES	48400	2,6	15494	107	15	31700	836	29	48	171
BACAU	47179	2,5	15896	1299	4	28895	740	35	150	160
BIHOR	58066	3,1	14849	126	47	41871	923	39	63	148
BISTRITA-NASAUD	23123	1,2	8172	146	21	14195	421	24	46	98
BOTOSANI	23182	1,2	10838	468	1	11225	459	21	40	130
BRASOV	59163	3,1	13161	239	20	44635	884	48	58	118
BRAILA	25926	1,4	7072	376	12	17770	528	28	42	98
BUZAU	34290	1,8	10207	3747	46	19480	591	28	46	145
CARAS-SEVERIN	23138	1,2	8095	117	9	14261	474	35	42	105
CALARASI	18984	1,0	5771	609	3	12115	360	18	22	86
CLUJ	87832	4,6	22980	2112	21	61119	1335	52	62	151
CONSTANTA	78796	4,2	15764	311	23	60834	1519	51	87	207
COVASNA	16212	0,9	5926	148	4	9695	305	24	41	69
DAMBOVITA	35145	1,9	15831	60	8	18550	499	29	32	136
DOLJ	49637	2,6	10913	1560	8	36005	907	40	39	165
GALATI	44746	2,4	9886	1574	6	32218	861	30	35	136
GIURGIU	15590	0,8	3743	35	8	11354	330	22	15	83
GORJ	22310	1,2	5582	29	1	15937	501	50	26	184
HARGHITA	29519	1,6	12473	62	7	16303	497	23	64	90
HUNEDOARA	38254	2,0	10199	1166	98	25949	687	40	33	82
IALOMITA	17610	0,9	6732	268	12	10128	354	15	27	74
IASI	61204	3,2	18218	507	111	41054	1027	34	87	166
MARAMURES	48018	2,5	19186	1927	23	26072	605	37	43	125
MEHEDINTI	21020	1,1	7052	427	3	13077	339	19	19	84
MURES	47528	2,5	17851	37	34	28670	682	30	68	156
NEAMT	40871	2,2	15097	3293	30	21509	683	29	66	164
OLT	26338	1,4	10175	1611	1	13832	502	26	27	164
PRAHOVA	63075	3,3	19808	3122	15	38909	927	50	67	177
SALAJ	18744	1,0	7397	600	4	10276	299	19	41	108
SATU MARE	32136	1,7	10847	283	9	20367	481	19	41	89
SIBIU	37032	2,0	9757	778	49	25582	675	34	37	120
SUCEAVA	47366	2,5	22390	438	8	23623	598	30	73	206
TELEORMAN	21464	1,1	7597	272	399	12559	430	21	33	153
TIMIS	67115	3,5	11508	615	33	53429	1282	38	69	141
TULCEA	19399	1,0	7017	1363	114	10301	484	18	36	66
VASLUI	23792	1,3	11446	90	13	11673	423	16	22	109
VALCEA	30699	1,6	12146	364	6	17405	504	40	64	170
VRANCEA	22938	1,2	6939	356	10	15007	463	16	35	112
MUN. BUCURESTI	356415	18,8	28068	1038	312	319526	7151	115	64	141
ILFOV	33976	1,8	4290	49	32	28811	648	21	31	94

Table no. 6

**Operations performed in the trade registers by counties and categories of registration
in the month of April 2009**

County	Total of operations carried on		out of which:					
			New incorporations		Changes in statutory documents		Strike off companies	
	No.	%	No.	%	No.	%	No.	%
0	1	2	3	4	5	6	9	10
Total ROMÂNIA	233430	100,0	9131	3,9	220357	94,4	3942	1,7
ALBA	2726	100,0	149	5,5	2514	92,2	63	2,3
ARAD	4057	100,0	226	5,6	3754	92,5	77	1,9
ARGES	4856	100,0	222	4,6	4589	94,5	45	0,9
BACAU	4309	100,0	200	4,6	4015	93,2	94	2,2
BIHOR	24217	100,0	292	1,2	23821	98,4	104	0,4
BISTRITA-NASAUD	2730	100,0	104	3,8	2527	92,6	99	3,6
BOTOSANI	1446	100,0	137	9,5	1256	86,9	53	3,7
BRASOV	6600	100,0	237	3,6	6239	94,5	124	1,9
BRAILA	17294	100,0	157	0,9	17094	98,8	43	0,2
BUZAU	3096	100,0	114	3,7	2924	94,4	58	1,9
CARAS-SEVERIN	2008	100,0	77	3,8	1890	94,1	41	2,0
CALARASI	1406	100,0	86	6,1	1291	91,8	29	2,1
CLUJ	8619	100,0	390	4,5	7877	91,4	352	4,1
CONSTANTA	7587	100,0	380	5,0	7084	93,4	123	1,6
COVASNA	2014	100,0	81	4,0	1889	93,8	44	2,2
DAMBOVITA	3053	100,0	166	5,4	2790	91,4	97	3,2
DOLJ	4400	100,0	252	5,7	4081	92,8	67	1,5
GALATI	3953	100,0	201	5,1	3701	93,6	51	1,3
GIURGIU	1506	100,0	96	6,4	1384	91,9	26	1,7
GORJ	15980	100,0	90	0,6	15841	99,1	49	0,3
HARGHITA	4800	100,0	168	3,5	4467	93,1	165	3,4
HUNEDOARA	3144	100,0	181	5,8	2922	92,9	41	1,3
IALOMITA	1381	100,0	71	5,1	1224	88,6	86	6,2
IASI	5970	100,0	392	6,6	5368	89,9	210	3,5
MARAMURES	3992	100,0	229	5,7	3660	91,7	103	2,6
MEHEDINTI	1778	100,0	65	3,7	1681	94,5	32	1,8
MURES	4517	100,0	233	5,2	4168	92,3	116	2,6
NEAMT	4846	100,0	134	2,8	4650	96,0	62	1,3
OLT	2715	100,0	105	3,9	2581	95,1	29	1,1
PRAHOVA	6977	100,0	337	4,8	6453	92,5	187	2,7
SALAJ	2017	100,0	105	5,2	1868	92,6	44	2,2
SATU MARE	2465	100,0	125	5,1	2286	92,7	54	2,2
SIBIU	5600	100,0	197	3,5	5270	94,1	133	2,4
SUCEAVA	3858	100,0	198	5,1	3615	93,7	45	1,2
TELEORMAN	2793	100,0	130	4,7	2639	94,5	24	0,9
TIMIS	4397	100,0	359	8,2	3895	88,6	143	3,3
TULCEA	8073	100,0	98	1,2	7941	98,4	34	0,4
VASLUI	3980	100,0	94	2,4	3871	97,3	15	0,4
VALCEA	3287	100,0	119	3,6	3081	93,7	87	2,6
VRANCEA	2894	100,0	68	2,3	2773	95,8	53	1,8
MUN. BUCURESTI	28902	100,0	1730	6,0	26578	92,0	594	2,1
ILFOV	3187	100,0	336	10,5	2805	88,0	46	1,4

*) by effect of implementation of Law no. 314/2001, art.1 and art. 6

Table no.7

Number of incorporations in the trade registers by counties and capital sources in the month of April 2009

County	Total		out of which:						Ranking by: *	
			Private capital				State majority capital			Mixed capital (state+private)
			out of which:				out of which:			
			PF	Companies	SC	APJ	RA	Companies		Companies
No.	%	No.	No.	No.		No.	No.	No.		
0	1	2	3	4	5	6	7	8	9	
Total ROMÂNIA	9131	100,0	4152	4971			5	2	3	X
ALBA	149	1,6	70	79						1
ARAD	226	2,5	104	122						2
ARGES	222	2,4	100	122						3
BACAU	200	2,2	110	90						4
BIHOR	292	3,2	137	155						5
BISTRITA-NASAUD	104	1,1	50	52				2	2	6
BOTOSANI	137	1,5	87	48			1		1	7
BRASOV	237	2,6	108	129						8
BRAILA	157	1,7	107	49			1			9
BUZAU	114	1,2	40	74						10
CARAS-SEVERIN	77	0,8	32	45						11
CALARASI	86	0,9	45	41						12
CLUJ	390	4,3	151	239						13
CONSTANTA	380	4,2	143	236			1			14
COVASNA	81	0,9	50	31						15
DAMBOVITA	166	1,8	91	75						16
DOLJ	252	2,8	118	134						17
GALATI	201	2,2	92	109						18
GIURGIU	96	1,1	25	70			1			19
GORJ	90	1,0	36	54						20
HARGHITA	168	1,8	127	41						21
HUNEDOARA	181	2,0	80	101						22
IALOMITA	71	0,8	37	34						23
IASI	392	4,3	246	146						24
MARAMURES	229	2,5	141	88						25
MEHEDINTI	65	0,7	44	21						26
MURES	233	2,6	141	92						27
NEAMT	134	1,5	80	54						28
OLT	105	1,1	48	57						29
PRAHOVA	337	3,7	165	172						30
SALAJ	105	1,1	54	51						31
SATU MARE	125	1,4	51	74						32
SIBIU	197	2,2	119	78						33
SUCEAVA	198	2,2	128	70						34
TELEORMAN	130	1,4	73	57						35
TIMIS	359	3,9	124	235						36
TULCEA	98	1,1	48	50						37
VASLUI	94	1,0	46	48						38
VALCEA	119	1,3	66	53						39
VRANCEA	68	0,7	35	33						40
MUN. BUCURESTI	1730	18,9	512	1217			1			41
ILFOV	336	3,7	91	245						42

*) The total number of incorporations (col 1)

*** Less than 0,01%

Table no.8

Number of incorporations in the trade registers by counties and business categories in the month of April 2009

County	Total		out of which:						RA	SC	APJ
			PF	companies: 4972							
	SNC	SCS		SRL	SA						
	No.	%	No.	No.	No.	No.	No.	No.			
0	1	2	3	4	5	6	7	8	9		
Total ROMÂNIA	9131	100,0	4152		2	4938	32	2		5	
ALBA	149	1,6	70			79					
ARAD	226	2,5	104			122					
ARGES	222	2,4	100			122					
BACAU	200	2,2	110			90					
BIHOR	292	3,2	137			155					
BISTRITA-NASAUD	104	1,1	50			52		2			
BOTOSANI	137	1,5	87			48	1			1	
BRASOV	237	2,6	108			129					
BRAILA	157	1,7	107			49				1	
BUZAU	114	1,2	40			72	2				
CARAS-SEVERIN	77	0,8	32			45					
CALARASI	86	0,9	45			41					
CLUJ	390	4,3	151			239					
CONSTANTA	380	4,2	143			233	3			1	
COVASNA	81	0,9	50			30	1				
DAMBOVITA	166	1,8	91			75					
DOLJ	252	2,8	118			131	3				
GALATI	201	2,2	92			108	1				
GIURGIU	96	1,1	25			70				1	
GORJ	90	1,0	36			54					
HARGHITA	168	1,8	127			41					
HUNEDOARA	181	2,0	80			101					
IALOMITA	71	0,8	37			34					
IASI	392	4,3	246			146					
MARAMURES	229	2,5	141			88					
MEHEDINTI	65	0,7	44			21					
MURES	233	2,6	141			91	1				
NEAMT	134	1,5	80			54					
OLT	105	1,1	48			57					
PRAHOVA	337	3,7	165			171	1				
SALAJ	105	1,1	54			51					
SATU MARE	125	1,4	51			74					
SIBIU	197	2,2	119			77	1				
SUCEAVA	198	2,2	128			70					
TELEORMAN	130	1,4	73			55	2				
TIMIS	359	3,9	124			233	2				
TULCEA	98	1,1	48			50					
VASLUI	94	1,0	46			48					
VALCEA	119	1,3	66			52	1				
VRANCEA	68	0,7	35			33					
MUN. BUCURESTI	1730	18,9	512		2	1203	12			1	
ILFOV	336	3,7	91			244	1				

Table no. 9

Number of incorporations in the trade registers by domains of activity and business categories in the month of April 2009

CAEN segment	Field of activity	Total		out of which:								
				PF	companies: 4972				RA	SC	APJ	
					SNC	SCS	SRL	SA				
					No.	No.	No.	No.				No.
0	1	2	3	4	5	6	7	8	9	10	11	
	Total ROMÂNIA	9131	100,0	4152		2	4938	32		2		5
1	Agriculture, hunting and related service activities	613	6,7	483			128					2
2	Forestry and logging	31	0,3	6			23			2		
3	Fishing and aquaculture	41	0,4	29			12					
5	Mining of hard and brown coal											
6	Extraction of crude petroleum and natural gas	1	0,0				1					
7	Mining of metal ores											
8	Other mining and quarrying	16	0,2				15	1				
9	Mining support service activities	1	0,0				1					
10	Manufacture of food products	97	1,1	32			65					
11	Manufacture of beverages	15	0,2	10			5					
12	Manufacture of tobacco products	1	0,0				1					
13	Manufacture of textiles	11	0,1	3			8					
14	Manufacture of wearing apparel	40	0,4	16			24					
15	Tanning and dressing of leather; manufacture of luggage, handbags, saddlery, harness and footwear; dressing and dyeing of fur	21	0,2	8			13					
16	Manufacture of wood and of products of wood and cork, except furniture; manufacture of articles of straw and plaiting materials	53	0,6	32			21					
17	Manufacture of paper and paper products	6	0,1				6					
18	Printing and reproduction of recorded media	10	0,1	1			9					
19	Manufacture of coke and refined petroleum products	1	0,0				1					
20	Manufacture of chemicals and chemical products	8	0,1	1			7					
21	Manufacture of basic pharmaceutical products and pharmaceutical preparations	1	0,0				1					
22	Manufacture of rubber and plastic products	23	0,3	4			19					
23	Manufacture of other non-metallic mineral products	48	0,5	20			26	2				
24	Manufacture of basic metals	6	0,1	3			3					
25	Manufacture of fabricated metal products, except machinery and equipment	69	0,8	43			24	2				
26	Manufacture of computer, electronic and optical products	2	0,0				2					
27	Manufacture of electrical equipment											
28	Manufacture of machinery and equipment n.e.c.	8	0,1				8					
29	Manufacture of motor vehicles, trailers and semi-trailers	3	0,0				3					
30	Manufacture of other transport equipment	6	0,1				6					
31	Manufacture of furniture	29	0,3	6			23					
32	Other manufacturing	30	0,3	18			12					
33	Repair and installation of machinery and equipment	41	0,4	18			22	1				
35	Electricity, gas, steam and air conditioning supply	32	0,4				29	1				
36	Water collection, treatment and supply											
37	Sewerage	6	0,1	1			5					
38	Waste collection, treatment and disposal activities; materials recovery	28	0,3	1			27					
39	Remediation activities and other waste management services											
41	Construction of buildings	777	8,5	52			723	2				
42	Civil engineering	53	0,6	2			51					
43	Specialised construction activities	526	5,8	122			403	1				
45	Wholesale and retail trade and repair of motor vehicles and motorcycles	270	3,0	39			231					
46	Wholesale trade, except of motor vehicles and motorcycles	1057	11,6	207			850					2
47	Retail trade, except of motor vehicles and motorcycles	1759	19,3	590			1165	3		1		
49	Land transport and transport via pipelines	551	6,0	198			353					
50	Water transport	5	0,1	1			4					

Table no. 10

Number of incorporated trading companies and the value of the subscribed share capital, by counties, in the month of April 2009

County	Total registered companies		Subscribed capital		Average subscribed capital on company
	No.	%	thousand Lei	%	thousand Lei
0	1	2	3	4	5
Total ROMÂNIA	4972	100,0	184613,8	100,0	37,3
ALBA	79	1,6	61,4	0,0	0,8
ARAD	122	2,5	878,2	0,5	7,2
ARGES	122	2,5	338,4	0,2	2,8
BACAU	90	1,8	20197,5	10,9	224,4
BIHOR	155	3,1	250,3	0,1	1,6
BISTRITA-NASAUD	52	1,0	29,2	0,0	0,6
BOTOSANI	49	1,0	287,6	0,2	5,9
BRASOV	129	2,6	3794,0	2,1	29,4
BRAILA	49	1,0	92,3	0,0	1,9
BUZAU	74	1,5	627,2	0,3	8,7
CARAS-SEVERIN	45	0,9	31,5	0,0	0,7
CALARASI	41	0,8	2090,5	1,1	51,0
CLUJ	239	4,8	1385,4	0,8	5,8
CONSTANTA	236	4,7	358,2	0,2	1,5
COVASNA	31	0,6	150,2	0,1	5,0
DAMBOVITA	75	1,5	32,8	0,0	0,4
DOLJ	134	2,7	35,7	0,0	0,3
GALATI	109	2,2	246,6	0,1	2,3
GIURGIU	70	1,4	67,2	0,0	1,0
GORJ	54	1,1	32,2	0,0	0,6
HARGHITA	41	0,8	134,5	0,1	3,3
HUNEDOARA	101	2,0	55,8	0,0	0,6
IALOMITA	34	0,7	507,9	0,3	14,9
IASI	146	2,9	91102,6	49,3	624,0
MARAMURES	88	1,8	28,9	0,0	0,3
MEHEDINTI	21	0,4	5,8	***	0,3
MURES	92	1,9	30,9	0,0	0,3
NEAMT	54	1,1	351,2	0,2	6,5
OLT	57	1,1	478,6	0,3	8,4
PRAHOVA	172	3,5	2159,2	1,2	12,6
SALAJ	51	1,0	306,6	0,2	6,0
SATU MARE	74	1,5	70,0	0,0	0,9
SIBIU	78	1,6	303,9	0,2	3,9
SUCEAVA	70	1,4	18,9	0,0	0,3
TELEORMAN	57	1,1	145,7	0,1	2,6
TIMIS	235	4,7	3561,3	1,9	15,3
TULCEA	50	1,0	34,1	0,0	0,7
VASLUI	48	1,0	29,0	0,0	0,6
VALCEA	53	1,1	14,7	***	0,3
VRANCEA	33	0,7	10,8	***	0,3
MUN. BUCURESTI	1217	24,5	49295,5	26,7	40,8
ILFOV	245	4,9	4981,4	2,7	20,4

Note: The average does not include filials because according to the Law no.31/1990 they are not juridical persons

*** Less than 0,01%

Table no. 11

Number of incorporated trading companies and the value of the subscribed share capital by legal forms, in the month of April 2009

Company type	Total registered companies		Subscribed capital		Average subscribed capital on company
	No.	%	thousand Lei	%	thousand Lei
0	1	2	3	4	5
Total ROMÂNIA	4972	100,0	184613,8	100,0	37,3
SNC					
SCS	3	0,1	8,3	***	
SA	275	5,5	43296,4	23,5	170,5
SRL	4694	94,4	141309,0	76,5	30,1

Note: The average does not include filials because according to the Law no.31/1990 they are not juridical persons

*** Less than 0,01%

Diagram no.5

