



MINISTRY OF JUSTICE

THE NATIONAL TRADE REGISTER OFFICE

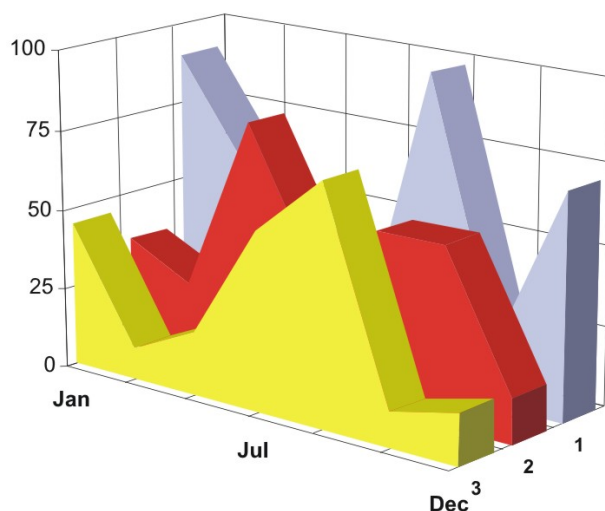
București, Bd. Unirii nr. 74, Bl. J3b, tronson II+III, sector 3; Telefon: +40 21 316.08.04, 316.08.10; Fax: +40 21 316.08.03; Cod poștal: 030837
Website: www.onrc.ro; E-mail: onrc@onrc.ro; Cod identificare Fiscală: 14942091

OPERATIONS IN THE CENTRAL TRADE REGISTER

STATISTIC SYNTHESIS

OF

**RECORDS IN THE CENTRAL TRADE REGISTER
- the 28th of February 2009 - provisional data -**



- ISSUE No. 207 -

**MINISTRY OF JUSTICE
THE NATIONAL TRADE REGISTER OFFICE**

- Operations such as incorporation of trading companies, submission of changes, and strike-off are carried out based on Law No.26/1990, as republished, Law No.31/1990, as republished and on the Methodological Norms no. P/608/1998.

- This work reflects the evolution of the operations with the Trade Register Office attached to Bucharest Law Court and the Trade Register Offices attached to County Law Courts.

- The data contained in the Central Trade Register refer to operations for which law sets out the obligation of being registered in the trade registers kept by the 42 trade register offices attached to law courts.

• The content of this publication shall not be reproduced, partly or entirely, in original or modified form, and shall not be stored in a recovery system and shall not be transmitted in any form or by any means without prior written authorization of the Ministry of Justice – The National Trade Register Office.

• The content of this publication shall not be used in articles, studies, books, as supporting or explanatory data only by clearly and accurately indicating the source.

CONTENTS

Page

1	Definitions	1
2.1	Data related to the period December 1990 –February 2009	3
<hr/>		
	Table no. 1 – Operations performed in the trade registers by categories of registration during December 1990 –February 2009, total by country and by counties, shares of counties in the total by country	3
	Table no. 2 – Operations performed in the trade registers by categories of registration during December 1990 –February 2009, total by country and counties, share of categories of operations in the total of each county	4
	Table no. 3 – Number and structure of incorporations in the trade registers during December 1990-February 2009	5
	Chart no. 1 – Structure by years of incorporations in the trade register	
	Table no. 4 – Number of incorporations in the trade registers by counties and capital sources during December 1990 - February 2009	6
	Table no. 5 – Number of incorporations in the trade registers by counties and business categories during December 1990 –February 2009	7
<hr/>		
2.2	Data related to February 2009	8
<hr/>		
	Table no. 6 – Operations performed in the trade registers by counties and categories of registrations in the month of February 2009	8
	Table no. 7 – Number of incorporations in the trade registers by counties and capital sources in the month of February 2009	9
	Table no. 8 – Number of incorporations in the trade registers by counties and business categories in the month of February 2009	10
	Table no. 9 –Number of incorporations in the trade registers by domains of activity and business categories in the month of February 2009	11-12
	Table no. 10 – Number of incorporated trading companies and the value of subscribed share capital, by counties, in the month of February 2009	13
	Table no. 11– Number of incorporated trading companies and the value of subscribed share capital by legal forms, in the month of February 2009	14
	Chart no. 5 – Average value of subscribed share capital by types of trading companies in the month of February 2009	14

Definitions

The Trade Register Office was established based on Law No. 26/1990, as republished and subsequently amended and supplemented, operates as an active institution since December 1990 and is twofold structured:

- at national level, represented by the National Trade Register Office organized under the authority of the Ministry of Justice
- at local level, represented by the 42 Trade Register Offices attached to Law Courts, organized under the subordination of the National Trade Register Office

Categories of persons liable to registration in the trade register:

- natural persons: authorized natural persons, individual enterprises and family enterprises currently carrying on trading activities;
 - legal persons represented by: Trading Companies, National Societies and Companies, National R&D Institutes, Autonomous Administrations, Co-operative Societies, Agricultural Co-operatives, Co-operative Organizations, Economic Interest Groupings, European Economic Interest Groupings, European Societies, European Co-operative Societies, branches of trading companies with legal establishment, operation and incorporation regime of trading company legal form under which they were incorporated.
- **Terms used in tables and charts**
- **Number of companies**, depending on the table, represents the number of trading companies incorporated during the reference period, the number of trading companies struck-off from the trade register. The following forms of organization are included: limited liability companies, joint-stock companies, limited partnerships by share, limited partnerships, general partnerships, and branches thereof.
 - **Value of subscribed share capital:**
 - **total, expressed in national currency:** the share capital value resulted by adding up the subscribed values (in cash and in kind) in national currency (lei)

➤ **Regions of economic development:**

<i>North-East:</i>	Suceava, Botoșani, Neamț, Iași, Bacău, Vaslui.
<i>South-East:</i>	Vrancea, Galați, Buzău, Brăila, Tulcea, Constanța.
<i>South-Muntenia:</i>	Argeș, Dâmbovița, Prahova, Teleorman, Giurgiu, Călărași, Ialomița.
<i>South-West Oltenia:</i>	Gorj, Vâlcea, Dolj, Mehedinți, Olt.
<i>West:</i>	Arad, Caraș-Severin, Hunedoara, Timiș.
<i>North-West:</i>	Bihor, Bistrița, Cluj, Satu Mare, Sălaj, Maramureș.
<i>Center:</i>	Alba, Brașov, Covasna, Harghita, Mureș, Sibiu.
<i>Bucharest-Ilfov:</i>	București, Ilfov.

NACE Code – The classification of economic activities in the national economy was approved by GO No. 656/1997, amended by Order No 601/2002 and Order no. 337/2007 of the President of the National Institute of Statistics, and complies with the international classification used in statistic reports and official documents. The activities are ranked by the harmonization principle, by sections, divisions, groups and classes.

Abbreviations

- **PF** - Natural Person; the following forms of organization are included in this category: natural persons and family associations registered until 25.04.2008, authorized natural persons, individual enterprises and family enterprises.
- **SNC** - General Partnership
- **SCS** - Limited Partnership
- **SCA** - Limited Partnership by Share
- **SA** - Joint-Stock Company
- **SRL** - Limited Liability Company
- **RA** - Autonomous Administration
- **APJ** - Other legal persons having the obligation to register in the trade register: National R&D Institutes, Economic Interest Groupings, European Economic Interest Groupings, European Societies, European Co-operative Societies, Agricultural Co-operatives, Co-operative Organizations.

Sources of Information:

The integrated IT system of the trade register is designed by The National Trade Register Office in compliance with the provisions of the related legislation in force. The source of information consists of the trade registers organized in computerized system, kept by the trade register offices attached to law courts.

Table no. 1

**Operations performed in the trade registers by categories of registration during
December 1990 – February 2009, total by country and by counties, share of
counties in the total by country**

Counties	Total of registered operations		out of which :					
			Registered companies		Changes in statutory documents		Strike off companies	
	No.	%	No.	%	No.	%	No.	%
0	1	2	3	4	5	6	11	12
Total ROMÂNIA	11206955	100,0	1870658	100,0	8768634	100,0	567663	100,0
ALBA	165371	1,5	29707	1,6	129523	1,5	6141	1,1
ARAD	258783	2,3	45679	2,4	201309	2,3	11795	2,1
ARGES	271083	2,4	47911	2,6	212742	2,4	10430	1,8
BACAU	251175	2,2	46691	2,5	191825	2,2	12659	2,2
BIHOR	320767	2,9	57351	3,1	247112	2,8	16304	2,9
BISTRITA-NASAUD	131337	1,2	22888	1,2	101490	1,2	6959	1,2
BOTOSANI	103616	0,9	22928	1,2	74332	0,8	6356	1,1
BRASOV	448604	4,0	58580	3,1	376510	4,3	13514	2,4
BRAILA	164722	1,5	25582	1,4	134591	1,5	4549	0,8
BUZAU	195308	1,7	34015	1,8	149519	1,7	11774	2,1
CARAS-SEVERIN	134980	1,2	22921	1,2	102789	1,2	9270	1,6
CALARASI	101819	0,9	18755	1,0	77682	0,9	5382	0,9
CLUJ	496074	4,4	86909	4,6	391233	4,5	17932	3,2
CONSTANTA	478474	4,3	77932	4,2	372203	4,2	28339	5,0
COVASNA	97798	0,9	16005	0,9	76799	0,9	4994	0,9
DAMBOVITA	161606	1,4	34767	1,9	112495	1,3	14344	2,5
DOLJ	299904	2,7	49014	2,6	236414	2,7	14476	2,6
GALATI	291172	2,6	44252	2,4	231767	2,6	15153	2,7
GIURGIU	88052	0,8	15377	0,8	67302	0,8	5373	0,9
GORJ	168832	1,5	22078	1,2	139808	1,6	6946	1,2
HARGHITA	161249	1,4	29126	1,6	126263	1,4	5860	1,0
HUNEDOARA	229347	2,0	37834	2,0	177482	2,0	14031	2,5
IALOMITA	106416	0,9	17418	0,9	82636	0,9	6362	1,1
IASI	366311	3,3	60194	3,2	292289	3,3	13828	2,4
MARAMURES	228200	2,0	47452	2,5	168806	1,9	11942	2,1
MEHEDINTI	119893	1,1	20817	1,1	90734	1,0	8342	1,5
MURES	319225	2,8	47001	2,5	257178	2,9	15046	2,7
NEAMT	246232	2,2	40506	2,2	190315	2,2	15411	2,7
OLT	136737	1,2	26104	1,4	101053	1,2	9580	1,7
PRAHOVA	379618	3,4	62235	3,3	299971	3,4	17412	3,1
SALAJ	95150	0,8	18511	1,0	70863	0,8	5776	1,0
SATU MARE	174904	1,6	31804	1,7	131992	1,5	11108	2,0
SIBIU	243877	2,2	36536	2,0	197592	2,3	9749	1,7
SUCEAVA	267473	2,4	46842	2,5	202496	2,3	18135	3,2
TELEORMAN	120765	1,1	21127	1,1	94514	1,1	5124	0,9
TIMIS	378323	3,4	66264	3,5	293904	3,4	18155	3,2
TULCEA	129900	1,2	19167	1,0	104913	1,2	5820	1,0
VASLUI	140744	1,3	23530	1,3	108046	1,2	9168	1,6
VALCEA	167978	1,5	30390	1,6	127910	1,5	9678	1,7
VRANCEA	135701	1,2	22738	1,2	107755	1,2	5208	0,9
MUN. BUCURESTI	2258467	20,2	352465	18,8	1784036	20,3	121966	21,5
ILFOV	170968	1,5	33255	1,8	130441	1,5	7272	1,3

Table no. 2

Operations performed in the trade registers during December 1990 – February 2009, total by country and counties, share of categories of operations in the total of each county

Counties	Total of registered operations		out of which :					
			Registered companies		Changes in statutory documents		Strike off companies	
	No.	%	No.	%	No.	%	No.	%
0	1	2	3	4	5	6	11	12
Total ROMÂNIA	11206955	100,0	1870658	16,7	8768634	78,2	567663	5,1
ALBA	165371	100,0	29707	18,0	129523	78,3	6141	3,7
ARAD	258783	100,0	45679	17,7	201309	77,8	11795	4,6
ARGES	271083	100,0	47911	17,7	212742	78,5	10430	3,8
BACAU	251175	100,0	46691	18,6	191825	76,4	12659	5,0
BIHOR	320767	100,0	57351	17,9	247112	77,0	16304	5,1
BISTRITA-NASAUD	131337	100,0	22888	17,4	101490	77,3	6959	5,3
BOTOSANI	103616	100,0	22928	22,1	74332	71,7	6356	6,1
BRASOV	448604	100,0	58580	13,1	376510	83,9	13514	3,0
BRAILA	164722	100,0	25582	15,5	134591	81,7	4549	2,8
BUZAU	195308	100,0	34015	17,4	149519	76,6	11774	6,0
CARAS-SEVERIN	134980	100,0	22921	17,0	102789	76,2	9270	6,9
CALARASI	101819	100,0	18755	18,4	77682	76,3	5382	5,3
CLUJ	496074	100,0	86909	17,5	391233	78,9	17932	3,6
CONSTANTA	478474	100,0	77932	16,3	372203	77,8	28339	5,9
COVASNA	97798	100,0	16005	16,4	76799	78,5	4994	5,1
DAMBOVITA	161606	100,0	34767	21,5	112495	69,6	14344	8,9
DOLJ	299904	100,0	49014	16,3	236414	78,8	14476	4,8
GALATI	291172	100,0	44252	15,2	231767	79,6	15153	5,2
GIURGIU	88052	100,0	15377	17,5	67302	76,4	5373	6,1
GORJ	168832	100,0	22078	13,1	139808	82,8	6946	4,1
HARGHITA	161249	100,0	29126	18,1	126263	78,3	5860	3,6
HUNEDOARA	229347	100,0	37834	16,5	177482	77,4	14031	6,1
IALOMITA	106416	100,0	17418	16,4	82636	77,7	6362	6,0
IASI	366311	100,0	60194	16,4	292289	79,8	13828	3,8
MARAMURES	228200	100,0	47452	20,8	168806	74,0	11942	5,2
MEHEDINTI	119893	100,0	20817	17,4	90734	75,7	8342	7,0
MURES	319225	100,0	47001	14,7	257178	80,6	15046	4,7
NEAMT	246232	100,0	40506	16,5	190315	77,3	15411	6,3
OLT	136737	100,0	26104	19,1	101053	73,9	9580	7,0
PRAHOVA	379618	100,0	62235	16,4	299971	79,0	17412	4,6
SALAJ	95150	100,0	18511	19,5	70863	74,5	5776	6,1
SATU MARE	174904	100,0	31804	18,2	131992	75,5	11108	6,4
SIBIU	243877	100,0	36536	15,0	197592	81,0	9749	4,0
SUCEAVA	267473	100,0	46842	17,5	202496	75,7	18135	6,8
TELEORMAN	120765	100,0	21127	17,5	94514	78,3	5124	4,2
TIMIS	378323	100,0	66264	17,5	293904	77,7	18155	4,8
TULCEA	129900	100,0	19167	14,8	104913	80,8	5820	4,5
VASLUI	140744	100,0	23530	16,7	108046	76,8	9168	6,5
VALCEA	167978	100,0	30390	18,1	127910	76,1	9678	5,8
VRANCEA	135701	100,0	22738	16,8	107755	79,4	5208	3,8
MUN. BUCURESTI	2258467	100,0	352465	15,6	1784036	79,0	121966	5,4
ILFOV	170968	100,0	33255	19,5	130441	76,3	7272	4,3

Table no.3

Number and structure of incorporations in the trade registers during December 1990- February 2009

Period (year, month)	Registered companies	Percentage	
	No.	%	%
0	1	2	3
Total, 31 December 2008, out of which	1870658	100,00	
Year 1990	81	0,00	
Year 1991	95840	5,12	
Year 1992	137456	7,35	
Year 1993	117078	6,26	
Year 1994	137445	7,35	
Year 1995	65479	3,50	
Year 1996	62089	3,32	
Year 1997	55663	2,98	
Year 1998	63878	3,41	
Year 1999	57197	3,06	
Year 2000	57291	3,06	
Year 2001	61265	3,28	
Year 2002	84780	4,53	
Year 2003	123582	6,61	
Year 2004	144284	7,71	
Year 2005	159464	8,52	
Year 2006	135371	7,24	
Year 2007	144728	7,74	
Year 2008	144177	7,71	
Year 2009 (I - XII) out of which :	23510		100,0
January	9880		42,0
February	13630		

Note: Column 2 reveals the annual structure of incorporations; column 3 reveals the structure by months during the current year.

Diagram no.1

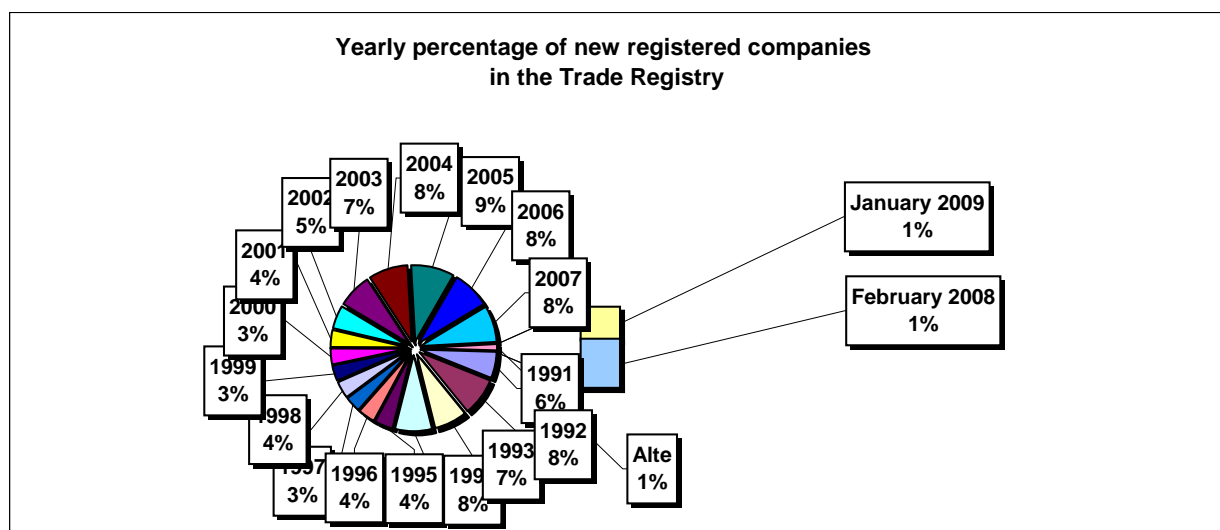


Table no. 4

**Number of incorporations in the trade registers by counties and capital sources during
December 1990 - February 2009**

Counties	Total		out of which:						Ranking by: *	
			Private capital				State majority capital			Mixed capital (state+private)
			out of which:				out of which:			
			PF	Companies	SC	APJ	RA	Companies		Companies
No.	%	No.	No.	No.	No.	No.	No.	No.		
0	1	2	3	4	5	6	6	7	8	9
Total ROMÂNIA	1870658	100,0	494471	1356323	2037	5476	1352	2382	8624	X
ALBA	29707	1,6	10424	18847	36	145	38	47	170	25
ARAD	45680	2,4	17254	27804	60	159	27	41	336	15
ARGES	47911	2,6	15264	32217	48	171	29	30	152	10
BACAU	46691	2,5	15651	30428	150	160	35	42	226	14
BIHOR	57352	3,1	14478	42253	63	148	39	62	309	8
BISTRITA-NASAUD	22888	1,2	8060	14527	46	98	19	29	109	32
BOTOSANI	22928	1,2	10686	11760	40	129	21	173	119	30
BRASOV	58580	3,1	12905	45193	58	118	47	87	172	7
BRAILA	25582	1,4	6850	18353	42	97	28	45	167	28
BUZAU	34015	1,8	10108	23515	46	145	28	42	131	21
CARAS-SEVERIN	22921	1,2	7989	14548	42	105	35	65	137	31
CALARASI	18755	1,0	5649	12808	22	86	18	77	95	38
CLUJ	86909	4,6	22597	63743	62	151	52	41	263	2
CONSTANTA	77932	4,2	15454	61542	87	204	51	51	543	3
COVASNA	16005	0,9	5794	9936	41	69	24	32	109	41
DAMBOVITA	34767	1,9	15610	18731	32	136	29	75	154	20
DOLJ	49013	2,6	10601	37907	39	165	40	58	203	9
GALATI	44252	2,4	9659	34198	35	136	30	51	143	16
GIURGIU	15377	0,8	3675	11364	15	82	22	109	110	42
GORJ	22078	1,2	5480	16155	26	184	50	83	100	34
HARGHITA	29126	1,6	12196	16479	64	90	23	43	231	26
HUNEDOARA	37834	2,0	10031	27270	33	82	40	93	285	18
IALOMITA	17418	0,9	6632	10533	27	74	15	46	91	40
IASI	60194	3,2	17611	41883	87	166	34	71	344	6
MARAMURES	47452	2,5	18848	28237	43	125	37	40	123	11
MEHEDINTI	20817	1,1	6918	13652	19	84	19	27	98	36
MURES	47001	2,5	17535	29010	68	156	30	34	168	12
NEAMT	40506	2,2	14888	25163	66	164	29	30	166	17
OLT	26104	1,4	10075	15625	27	164	26	64	123	27
PRAHOVA	62235	3,3	19387	42210	67	177	50	72	272	5
SALAJ	18511	1,0	7275	10976	41	108	19	28	64	23
SATU MARE	31804	1,7	10699	20781	41	89	19	42	134	39
SIBIU	36536	2,0	9469	26609	37	120	34	108	159	19
SUCEAVA	46842	2,5	22049	24201	73	204	30	64	221	13
TELEORMAN	21127	1,1	7399	13293	33	153	21	46	182	35
TIMIS	66264	3,5	11193	54406	69	141	38	69	348	4
TULCEA	19167	1,0	6894	11899	36	66	18	42	212	37
VASLUI	23530	1,3	11298	11908	22	109	16	41	136	29
VALCEA	30390	1,6	11964	18000	64	170	40	38	114	24
VRANCEA	22738	1,2	6857	15577	35	112	16	27	114	33
MUN. BUCURESTI	352464	18,8	26951	323971	64	140	115	104	1120	1
ILFOV	33255	1,8	4114	28811	31	94	21	13	171	22

*) The total number of incorporations (col 1)

Table no. 5

**Number of incorporations in the trade registers by counties and business categories
during December 1990 – February 2009**

County	Total		out of which:							
			PF	companies: 1367322				RA	SC	APJ
	SNC	SCS		SRL	SA					
	No.	%	No.	No.	No.	No.	No.	No.	No.	
0	1	2	3	4	5	6	7	8	9	10
Total ROMÂNIA	1870658	100,0	494471	32673	1600	1299622	33427	1352	2037	5476
ALBA	29707	1,6	10424	890	11	17590	573	38	36	145
ARAD	45679	2,4	17254	54	12	27417	696	27	60	159
ARGES	47911	2,6	15264	107	15	31441	836	29	48	171
BACAU	46691	2,5	15651	1299	4	28652	740	35	150	160
BIHOR	57351	3,1	14478	126	47	41528	922	39	63	148
BISTRITA-NASAUD	22888	1,2	8060	146	21	14077	421	19	46	98
BOTOSANI	22928	1,2	10686	468	1	11125	458	21	40	129
BRASOV	58580	3,1	12905	239	20	44309	884	47	58	118
BRAILA	25582	1,4	6850	376	12	17649	528	28	42	97
BUZAU	34015	1,8	10108	3747	46	19306	589	28	46	145
CARAS-SEVERIN	22921	1,2	7989	117	9	14150	474	35	42	105
CALARASI	18755	1,0	5649	609	3	12008	360	18	22	86
CLUJ	86909	4,6	22597	2112	21	60581	1333	52	62	151
CONSTANTA	77932	4,2	15454	311	23	60287	1515	51	87	204
COVASNA	16005	0,9	5794	148	4	9621	304	24	41	69
DAMBOVITA	34767	1,9	15610	60	8	18393	499	29	32	136
DOLJ	49014	2,6	10601	1560	8	35700	901	40	39	165
GALATI	44252	2,4	9659	1574	6	31952	860	30	35	136
GIURGIU	15377	0,8	3675	35	8	11210	330	22	15	82
GORJ	22078	1,2	5480	29	1	15807	501	50	26	184
HARGHITA	29126	1,6	12196	62	7	16187	497	23	64	90
HUNEDOARA	37834	2,0	10031	1166	98	25697	687	40	33	82
IALOMITA	17418	0,9	6632	268	12	10036	354	15	27	74
IASI	60194	3,2	17611	507	111	40653	1025	34	87	166
MARAMURES	47452	2,5	18848	1927	23	25844	605	37	43	125
MEHEDINTI	20817	1,1	6918	427	3	13008	339	19	19	84
MURES	47001	2,5	17535	37	34	28460	681	30	68	156
NEAMT	40506	2,2	14888	3293	30	21355	681	29	66	164
OLT	26104	1,4	10075	1611	1	13699	501	26	27	164
PRAHOVA	62235	3,3	19387	3122	15	38492	925	50	67	177
SALAJ	18511	1,0	7275	600	4	10165	299	19	41	108
SATU MARE	31804	1,7	10699	283	9	20183	481	19	41	89
SIBIU	36536	2,0	9469	778	49	25375	674	34	37	120
SUCEAVA	46842	2,5	22049	438	8	23442	598	30	73	204
TELEORMAN	21127	1,1	7399	272	399	12422	428	21	33	153
TIMIS	66264	3,5	11193	615	33	52896	1279	38	69	141
TULCEA	19167	1,0	6894	1363	114	10192	484	18	36	66
VASLUI	23530	1,3	11298	90	13	11560	422	16	22	109
VALCEA	30390	1,6	11964	364	6	17280	502	40	64	170
VRANCEA	22738	1,2	6857	356	10	14890	462	16	35	112
MUN. BUCURESTI	352465	18,8	26951	1038	309	316716	7132	115	64	140
ILFOV	33255	1,8	4114	49	32	28267	647	21	31	94

Table no. 6

**Operations performed in the trade registers by counties and categories of registration
in the month of February 2009**

County	Total of operations carried on		out of which:					
			New incorporations		Changes in statutory documents		Strike off companies	
	No.	%	No.	%	No.	%	No.	%
0	1	2	3	4	5	6	9	10
Total ROMÂNIA	188825	100,0	13630	7,2	171064	90,6	4131	2,2
ALBA	13174	100,0	275	2,1	12589	95,6	310	2,4
ARAD	3906	100,0	328	8,4	3512	89,9	66	1,7
ARGES	3572	100,0	280	7,8	3226	90,3	66	1,8
BACAU	4826	100,0	324	6,7	4432	91,8	70	1,5
BIHOR	5747	100,0	368	6,4	5289	92,0	90	1,6
BISTRITA-NASAUD	2282	100,0	171	7,5	2084	91,3	27	1,2
BOTOSANI	2073	100,0	213	10,3	1789	86,3	71	3,4
BRASOV	5861	100,0	350	6,0	5391	92,0	120	2,0
BRAILA	2101	100,0	176	8,4	1881	89,5	44	2,1
BUZAU	2753	100,0	203	7,4	2474	89,9	76	2,8
CARAS-SEVERIN	1850	100,0	330	17,8	1418	76,6	102	5,5
CALARASI	4908	100,0	148	3,0	4725	96,3	35	0,7
CLUJ	8393	100,0	481	5,7	7711	91,9	201	2,4
CONSTANTA	5109	100,0	472	9,2	4531	88,7	106	2,1
COVASNA	1540	100,0	149	9,7	1343	87,2	48	3,1
DAMBOVITA	3043	100,0	296	9,7	2668	87,7	79	2,6
DOLJ	4355	100,0	473	10,9	3800	87,3	82	1,9
GALATI	3499	100,0	316	9,0	2958	84,5	225	6,4
GIURGIU	1149	100,0	96	8,4	1022	88,9	31	2,7
GORJ	2105	100,0	132	6,3	1924	91,4	49	2,3
HARGHITA	3587	100,0	270	7,5	3119	87,0	198	5,5
HUNEDOARA	3325	100,0	276	8,3	2977	89,5	72	2,2
IALOMITA	1313	100,0	130	9,9	1160	88,3	23	1,8
IASI	5874	100,0	763	13,0	5002	85,2	109	1,9
MARAMURES	3940	100,0	332	8,4	3486	88,5	122	3,1
MEHEDINTI	1092	100,0	179	16,4	881	80,7	32	2,9
MURES	5233	100,0	354	6,8	4758	90,9	121	2,3
NEAMT	3455	100,0	262	7,6	3113	90,1	80	2,3
OLT	2790	100,0	160	5,7	2585	92,7	45	1,6
PRAHOVA	5905	100,0	434	7,3	5265	89,2	206	3,5
SALAJ	1679	100,0	155	9,2	1484	88,4	40	2,4
SATU MARE	2381	100,0	206	8,7	2123	89,2	52	2,2
SIBIU	5173	100,0	348	6,7	4699	90,8	126	2,4
SUCEAVA	3164	100,0	260	8,2	2842	89,8	62	2,0
TELEORMAN	2470	100,0	273	11,1	2178	88,2	19	0,8
TIMIS	6463	100,0	395	6,1	5971	92,4	97	1,5
TULCEA	1886	100,0	280	14,8	1577	83,6	29	1,5
VASLUI	8174	100,0	261	3,2	7767	95,0	146	1,8
VALCEA	3675	100,0	174	4,7	3410	92,8	91	2,5
VRANCEA	2796	100,0	111	4,0	2627	94,0	58	2,1
MUN. BUCURESTI	29016	100,0	2042	7,0	26517	91,4	457	1,6
ILFOV	3188	100,0	384	12,0	2756	86,4	48	1,5

*) by effect of implementation of Law no. 314/2001, art.1 and art. 6

Table no.7

Number of incorporations in the trade registers by counties and capital sources in the month of February 2009

County	Total		out of which:						Rnking by: *	
			Private capital				State majority capital			Mixed capital
			out of which:				out of which:			(state+priva
			PF	Companies	SC	APJ	RA	Companie s		Companie s
No.	%	No.	No.	No.		No.	No.	No.		
0	1	2	3	4	5	6	7	8	9	
Total ROMÂNIA	13630	100,0	7088	6531		11			X	
ALBA	275	2,0	176	98		1			22	
ARAD	328	2,4	186	142					15	
ARGES	280	2,1	112	168					19	
BACAU	324	2,4	170	154					16	
BIHOR	368	2,7	181	187					9	
BISTRITA-NASAUD	171	1,3	106	65					34	
BOTOSANI	213	1,6	154	59					28	
BRASOV	350	2,6	144	205		1			11	
BRAILA	176	1,3	97	78		1			32	
BUZAU	203	1,5	102	100		1			30	
CARAS-SEVERIN	330	2,4	263	67					14	
CALARASI	148	1,1	87	61					38	
CLUJ	481	3,5	195	286					3	
CONSTANTA	472	3,5	157	315					5	
COVASNA	149	1,1	118	31					37	
DAMBOVITA	296	2,2	206	90					18	
DOLJ	473	3,5	278	195					4	
GALATI	316	2,3	159	157					17	
GIURGIU	96	0,7	28	68					42	
GORJ	132	1,0	65	67					39	
HARGHITA	270	2,0	204	66					24	
HUNEDOARA	276	2,0	129	147					21	
IALOMITA	130	1,0	84	46					40	
IASI	763	5,6	538	225					2	
MARAMURES	332	2,4	205	127					13	
MEHEDINTI	179	1,3	129	50					31	
MURES	354	2,6	204	150					10	
NEAMT	262	1,9	154	108					25	
OLT	160	1,2	75	83		2			35	
PRAHOVA	434	3,2	225	209					6	
SALAJ	155	1,1	91	64					36	
SATU MARE	206	1,5	114	92					29	
SIBIU	348	2,6	227	121					12	
SUCEAVA	260	1,9	155	104		1			27	
TELEORMAN	273	2,0	205	67		1			23	
TIMIS	395	2,9	143	252					7	
TULCEA	280	2,1	231	49					20	
VASLUI	261	1,9	209	52					26	
VALCEA	174	1,3	103	71					33	
VRANCEA	111	0,8	42	67		2			41	
MUN. BUCURESTI	2042	15,0	556	1485		1			1	
ILFOV	384	2,8	81	303					8	

*) The total number of incorporations (col 1)

*** Less than 0,01%

Table no.8

Number of incorporations in the trade registers by counties and business categories in the month of February 2009

County	Total		out of which:						APJ	
			PF	companies: 6531				RA		SC
	SNC	SCS		SRL	SA					
	No.	%	No.	No.	No.	No.	No.	No.		
0	1	2	3	4	5	6	7	8	9	
Total ROMÂNIA	13630	100,0	7088			6501	30			11
ALBA	275	2,0	176			97	1			1
ARAD	328	2,4	186			142				
ARGES	280	2,1	112			168				
BACAU	324	2,4	170			153	1			
BIHOR	368	2,7	181			187				
BISTRITA-NASAUD	171	1,3	106			65				
BOTOSANI	213	1,6	154			59				
BRASOV	350	2,6	144			204	1			1
BRAILA	176	1,3	97			78				1
BUZAU	203	1,5	102			100				1
CARAS-SEVERIN	330	2,4	263			67				
CALARASI	148	1,1	87			61				
CLUJ	481	3,5	195			285	1			
CONSTANTA	472	3,5	157			315				
COVASNA	149	1,1	118			31				
DAMBOVITA	296	2,2	206			90				
DOLJ	473	3,5	278			195				
GALATI	316	2,3	159			157				
GIURGIU	96	0,7	28			68				
GORJ	132	1,0	65			67				
HARGHITA	270	2,0	204			66				
HUNEDOARA	276	2,0	129			145	2			
IALOMITA	130	1,0	84			46				
IASI	763	5,6	538			224	1			
MARAMURES	332	2,4	205			127				
MEHEDINTI	179	1,3	129			49	1			
MURES	354	2,6	204			150				
NEAMT	262	1,9	154			108				
OLT	160	1,2	75			82	1			2
PRAHOVA	434	3,2	225			208	1			
SALAJ	155	1,1	91			64				
SATU MARE	206	1,5	114			92				
SIBIU	348	2,6	227			120	1			
SUCEAVA	260	1,9	155			103	1			1
TELEORMAN	273	2,0	205			67				1
TIMIS	395	2,9	143			252				
TULCEA	280	2,1	231			49				
VASLUI	261	1,9	209			52				
VALCEA	174	1,3	103			70	1			
VRANCEA	111	0,8	42			67				2
MUN. BUCURESTI	2042	15,0	556			1470	15			1
ILFOV	384	2,8	81			301	2			

Table no. 9

Number of incorporations in the trade registers by domains of activity and business categories in the month of February 2009

CAEN segment	Field of activity	Total		out of which:								
				PF	companies: 6531				RA	SC	APJ	
					SNC	SCS	SRL	SA				
					No.	No.	No.	No.				
0	1	2	3	4	5	6	7	8	9	10	11	
	Total ROMÂNIA	13630	100,0	7088				6501	30			11
1	Agriculture, hunting and related service activities	2886	21,2	2718				159				9
2	Forestry and logging	63	0,5	8				55				
3	Fishing and aquaculture	117	0,9	111				6				
5	Mining of hard and brown coal	1	0,0					1				
6	Extraction of crude petroleum and natural gas	1	0,0					1				
7	Mining of metal ores											
8	Other mining and quarrying	22	0,2					22				
9	Mining support service activities	3	0,0					3				
10	Manufacture of food products	239	1,8	175				62	1			1
11	Manufacture of beverages	14	0,1	8				6				
12	Manufacture of tobacco products											
13	Manufacture of textiles	12	0,1	1				11				
14	Manufacture of wearing apparel	58	0,4	17				40	1			
15	Tanning and dressing of leather; manufacture of luggage, handbags, saddlery, harness and footwear; dressing and dyeing of fur	12	0,1	5				7				
16	Manufacture of wood and of products of wood and cork, except furniture; manufacture of articles of straw and plaiting materials	88	0,6	35				53				
17	Manufacture of paper and paper products	12	0,1					12				
18	Printing and reproduction of recorded media	21	0,2	7				14				
19	Manufacture of coke and refined petroleum products	2	0,0					2				
20	Manufacture of chemicals and chemical products	10	0,1	1				8	1			
21	Manufacture of basic pharmaceutical products and pharmaceutical preparations											
22	Manufacture of rubber and plastic products	31	0,2	3				26	2			
23	Manufacture of other non-metallic mineral products	47	0,3	22				24	1			
24	Manufacture of basic metals	2	0,0					2				
25	Manufacture of fabricated metal products, except machinery and equipment	99	0,7	51				48				
26	Manufacture of computer, electronic and optical products	6	0,0					6				
27	Manufacture of electrical equipment	5	0,0					5				
28	Manufacture of machinery and equipment n.e.c.	8	0,1	2				6				
29	Manufacture of motor vehicles, trailers and semi-trailers	6	0,0					5	1			
30	Manufacture of other transport equipment	9	0,1					9				
31	Manufacture of furniture	50	0,4	18				32				
32	Other manufacturing	55	0,4	32				23				
33	Repair and installation of machinery and equipment	45	0,3	17				28				
35	Electricity, gas, steam and air conditioning supply	24	0,2					24				
36	Water collection, treatment and supply											
37	Sewerage	6	0,0	1				5				
38	Waste collection, treatment and disposal activities; materials recovery	28	0,2	1				27				
39	Remediation activities and other waste management services											
41	Construction of buildings	777	5,7	52				723	2			
42	Civil engineering	53	0,4	2				51				
43	Specialised construction activities	526	3,9	122				403	1			
45	Wholesale and retail trade and repair of motor vehicles and motorcycles	270	2,0	39				231				
46	Wholesale trade, except of motor vehicles and motorcycles	1057	7,8	207				850				
47	Retail trade, except of motor vehicles and motorcycles	1759	12,9	590				1165	3			1
49	Land transport and transport via pipelines	551	4,0	198				353				
50	Water transport	5	0,0	1				4				

Table no. 10

Number of incorporated trading companies and the value of the subscribed share capital, by counties, in the month of February 2009

County	Total registered companies		Subscribed capital		Average subscribed capital on company
	No.	%	thousand Lei	%	thousand Lei
0	1	2	3	4	5
Total ROMÂNIA	6531	100,0	181876,1	100,0	28,0
ALBA	98	1,5	19,7	0,0	0,2
ARAD	142	2,2	113,7	0,1	0,8
ARGES	168	2,6	4768,0	2,6	28,4
BACAU	154	2,4	66,1	0,0	0,4
BIHOR	187	2,9	633,8	0,3	3,4
BISTRITA-NASAUD	65	1,0	689,3	0,4	10,6
BOTOSANI	59	0,9	235,4	0,1	4,0
BRASOV	205	3,1	265,0	0,1	1,3
BRAILA	78	1,2	23,2	0,0	0,3
BUZAU	100	1,5	4189,8	2,3	41,9
CARAS-SEVERIN	67	1,0	32,8	0,0	0,5
CALARASI	61	0,9	34,4	0,0	0,6
CLUJ	286	4,4	4887,1	2,7	17,1
CONSTANTA	315	4,8	679,1	0,4	2,2
COVASNA	31	0,5	41,8	0,0	1,3
DAMBOVITA	90	1,4	32,1	0,0	0,4
DOLJ	195	3,0	152,5	0,1	0,8
GALATI	157	2,4	77,2	0,0	0,5
GIURGIU	68	1,0	35,7	0,0	0,5
GORJ	67	1,0	124,2	0,1	1,9
HARGHITA	66	1,0	20,7	0,0	0,3
HUNEDOARA	147	2,3	1042,5	0,6	7,2
IALOMITA	46	0,7	22,6	0,0	0,5
IASI	225	3,4	9859,1	5,4	43,8
MARAMURES	127	1,9	272,0	0,1	2,1
MEHEDINTI	50	0,8	110,9	0,1	2,2
MURES	150	2,3	654,2	0,4	4,4
NEAMT	108	1,7	23,5	0,0	0,2
OLT	83	1,3	88,1	0,0	1,1
PRAHOVA	209	3,2	953,3	0,5	4,6
SALAJ	64	1,0	19,1	0,0	0,3
SATU MARE	92	1,4	31,5	0,0	0,3
SIBIU	121	1,9	12582,5	6,9	105,7
SUCEAVA	104	1,6	56,9	0,0	0,6
TELEORMAN	67	1,0	23,4	0,0	0,4
TIMIS	252	3,9	4503,5	2,5	17,9
TULCEA	49	0,8	21,7	0,0	0,4
VASLUI	52	0,8	59,4	0,0	1,1
VALCEA	71	1,1	288,7	0,2	4,1
VRANCEA	67	1,0	44,1	0,0	0,7
MUN. BUCURESTI	1485	22,7	128587,2	70,7	87,3
ILFOV	303	4,6	5510,3	3,0	18,2

Note: The average does not include filials because according to the Law no.31/1990 they are not juridical persons

**** Less than 0,01%*

Table no. 11

Number of incorporated trading companies and the value of the subscribed share capital by legal forms, in the month of February 2009

Company type	Total registered companies		Subscribed capital		Average subscribed capital on company
	No.	%	thousand Lei	%	thousand Lei
0	1	2	3	4	5
Total ROMÂNIA	6531	100,0	181876,1	100,0	28,0
SNC					
SCS					
SA	30	0,5	111067,2	61,1	6170,4
SRL	6501	99,5	70808,9	38,9	10,9

Note: The average does not include filials because according to the Law no.31/1990 they are not juridical persons

*** Less than 0,01%

Diagram no.5

