



MINISTRY OF JUSTICE

THE NATIONAL TRADE REGISTER OFFICE

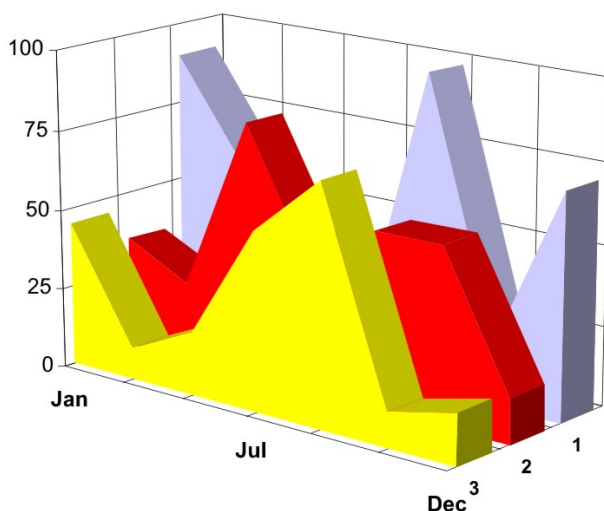
București, Bd. Unirii nr. 74, Bl. J3b, tronson II+III, sector 3; Telefon: +40 21 316.08.04, 316.08.10; Fax: +40 21 316.08.03; Cod poștal: 030837
Website: www.onrc.ro; E-mail: onrc@onrc.ro; Cod identificare Fiscală: 14942091

OPERATIONS IN THE CENTRAL TRADE REGISTER

STATISTIC SYNTHESIS

OF

**RECORDS IN THE CENTRAL TRADE REGISTER
- the 31st of January 2009 - provisional data -**



- ISSUE No. 206 -

**MINISTRY OF JUSTICE
THE NATIONAL TRADE REGISTER OFFICE**

- Operations such as incorporation of trading companies, submission of changes, and strike-off are carried out based on Law No.26/1990, as republished, Law No.31/1990, as republished and on the Methodological Norms no. P/608/1998.

- This work reflects the evolution of the operations with the Trade Register Office attached to Bucharest Law Court and the Trade Register Offices attached to County Law Courts.

- The data contained in the Central Trade Register refer to operations for which law sets out the obligation of being registered in the trade registers kept by the 42 trade register offices attached to law courts.

• The content of this publication shall not be reproduced, partly or entirely, in original or modified form, and shall not be stored in a recovery system and shall not be transmitted in any form or by any means without prior written authorization of the Ministry of Justice – The National Trade Register Office.

• The content of this publication shall not be used in articles, studies, books, as supporting or explanatory data only by clearly and accurately indicating the source.

CONTENTS

Page

1	Definitions	1
2.1	Data related to the period December 1990 –January 2009	3
<hr/>		
	Table no. 1 – Operations performed in the trade registers by categories of registration during December 1990 –January 2009, total by country and by counties, shares of counties in the total by country	3
	Table no. 2 – Operations performed in the trade registers by categories of registration during December 1990 –January 2009, total by country and counties, share of categories of operations in the total of each county	4
	Table no. 3 – Number and structure of incorporations in the trade registers during December 1990-January 2009	5
	Chart no. 1 – Structure by years of incorporations in the trade register	
	Table no. 4 – Number of incorporations in the trade registers by counties and capital sources during December 1990 - January 2009	6
	Table no. 5 – Number of incorporations in the trade registers by counties and business categories during December 1990 –January 2009	7
<hr/>		
2.2	Data related to January 2009	8
<hr/>		
	Table no. 6 – Operations performed in the trade registers by counties and categories of registrations in the month of January 2009	8
	Table no. 7 – Number of incorporations in the trade registers by counties and capital sources in the month of January 2009	9
	Table no. 8 – Number of incorporations in the trade registers by counties and business categories in the month of January 2009	10
	Table no. 9 –Number of incorporations in the trade registers by domains of activity and business categories in the month of January 2009	11-12
	Table no. 10 – Number of incorporated trading companies and the value of subscribed share capital, by counties, in the month of January 2009	13
	Table no. 11– Number of incorporated trading companies and the value of subscribed share capital by legal forms, in the month of January 2009	14
	Chart no. 5 – Average value of subscribed share capital by types of trading companies in the month of January 2009	14

Definitions

The Trade Register Office was established based on Law No. 26/1990, as republished and subsequently amended and supplemented, operates as an active institution since December 1990 and is twofold structured:

- at national level, represented by the National Trade Register Office organized under the authority of the Ministry of Justice
- at local level, represented by the 42 Trade Register Offices attached to Law Courts, organized under the subordination of the National Trade Register Office

Categories of persons liable to registration in the trade register:

- natural persons: authorized natural persons, individual enterprises and family enterprises currently carrying on trading activities;
 - legal persons represented by: Trading Companies, National Societies and Companies, National R&D Institutes, Autonomous Administrations, Co-operative Societies, Agricultural Co-operatives, Co-operative Organizations, Economic Interest Groupings, European Economic Interest Groupings, European Societies, European Co-operative Societies, branches of trading companies with legal establishment, operation and incorporation regime of trading company legal form under which they were incorporated.
- **Terms used in tables and charts**
 - **Number of companies**, depending on the table, represents the number of trading companies incorporated during the reference period, the number of trading companies struck-off from the trade register. The following forms of organization are included: limited liability companies, joint-stock companies, limited partnerships by share, limited partnerships, general partnerships, and branches thereof.
 - **Value of subscribed share capital:**
 - **total, expressed in national currency:** the share capital value resulted by adding up the subscribed values (in cash and in kind) in national currency (lei)

- **Regions of economic development:**

<i>North-East:</i>	Suceava, Botoșani, Neamț, Iași, Bacău, Vaslui.
<i>South-East:</i>	Vrancea, Galați, Buzău, Brăila, Tulcea, Constanța.
<i>South-Muntenia:</i>	Argeș, Dâmbovița, Prahova, Teleorman, Giurgiu, Călărași, Ialomița.
<i>South-West Oltenia:</i>	Gorj, Vâlcea, Dolj, Mehedinți, Olt.
<i>West:</i>	Arad, Caraș-Severin, Hunedoara, Timiș.
<i>North-West:</i>	Bihor, Bistrița, Cluj, Satu Mare, Sălaj, Maramureș.
<i>Center:</i>	Alba, Brașov, Covasna, Harghita, Mureș, Sibiu.
<i>Bucharest-Ilfov:</i>	București, Ilfov.

NACE Code – The classification of economic activities in the national economy was approved by GO No. 656/1997, amended by Order No 601/2002 and Order no. 337/2007 of the President of the National Institute of Statistics, and complies with the international classification used in statistic reports and official documents. The activities are ranked by the harmonization principle, by sections, divisions, groups and classes.

Abbreviations

- **PF** - Natural Person; the following forms of organization are included in this category: natural persons and family associations registered until 25.04.2008, authorized natural persons, individual enterprises and family enterprises.
- **SNC** - General Partnership
- **SCS** - Limited Partnership
- **SCA** - Limited Partnership by Share
- **SA** - Joint-Stock Company
- **SRL** - Limited Liability Company
- **RA** - Autonomous Administration
- **APJ** - Other legal persons having the obligation to register in the trade register: National R&D Institutes, Economic Interest Groupings, European Economic Interest Groupings, European Societies, European Co-operative Societies, Agricultural Co-operatives, Co-operative Organizations.

Sources of Information:

The integrated IT system of the trade register is designed by The National Trade Register Office in compliance with the provisions of the related legislation in force. The source of information consists of the trade registers organized in computerized system, kept by the trade register offices attached to law courts.

Table no. 1

**Operations performed in the trade registers by categories of registration during
December 1990 – January 2009, total by country and by counties, share of
counties in the total by country**

Counties	Total of registered operations		out of which :					
			Registered companies		Changes in statutory documents		Strike off companies	
	No.	%	No.	%	No.	%	No.	%
0	1	2	3	4	5	6	11	12
Total ROMÂNIA	11060276	100,0	1857034	100,0	8597570	100,0	605672	100,0
ALBA	152979	1,4	29432	1,6	116934	1,4	6613	1,1
ARAD	256031	2,3	45351	2,4	197797	2,3	12883	2,1
ARGES	268206	2,4	47631	2,6	209516	2,4	11059	1,8
BACAU	246924	2,2	46368	2,5	187393	2,2	13163	2,2
BIHOR	316457	2,9	56983	3,1	241823	2,8	17651	2,9
BISTRITA-NASAUD	129543	1,2	22717	1,2	99406	1,2	7420	1,2
BOTOSANI	102036	0,9	22715	1,2	72543	0,8	6778	1,1
BRASOV	444359	4,0	58230	3,1	371119	4,3	15010	2,5
BRAILA	163209	1,5	25406	1,4	132710	1,5	5093	0,8
BUZAU	193660	1,8	33812	1,8	147045	1,7	12803	2,1
CARAS-SEVERIN	133495	1,2	22591	1,2	101371	1,2	9533	1,6
CALARASI	97230	0,9	18607	1,0	72957	0,8	5666	0,9
CLUJ	491565	4,4	86428	4,7	383522	4,5	21615	3,6
CONSTANTA	474932	4,3	77460	4,2	367672	4,3	29800	4,9
COVASNA	96661	0,9	15856	0,9	75456	0,9	5349	0,9
DAMBOVITA	159268	1,4	34471	1,9	109827	1,3	14970	2,5
DOLJ	297198	2,7	48541	2,6	232614	2,7	16043	2,6
GALATI	288415	2,6	43936	2,4	228809	2,7	15670	2,6
GIURGIU	87124	0,8	15281	0,8	66280	0,8	5563	0,9
GORJ	167252	1,5	21946	1,2	137884	1,6	7422	1,2
HARGHITA	158519	1,4	28856	1,6	123144	1,4	6519	1,1
HUNEDOARA	227537	2,1	37558	2,0	174505	2,0	15474	2,6
IALOMITA	105535	1,0	17288	0,9	81476	0,9	6771	1,1
IASI	362047	3,3	59433	3,2	287287	3,3	15327	2,5
MARAMURES	225041	2,0	47121	2,5	165320	1,9	12600	2,1
MEHEDINTI	119098	1,1	20638	1,1	89853	1,0	8607	1,4
MURES	315448	2,9	46647	2,5	252420	2,9	16381	2,7
NEAMT	243621	2,2	40244	2,2	187202	2,2	16175	2,7
OLT	134471	1,2	25944	1,4	98468	1,1	10059	1,7
PRAHOVA	375703	3,4	61801	3,3	294706	3,4	19196	3,2
SALAJ	94263	0,9	18356	1,0	69379	0,8	6528	1,1
SATU MARE	173144	1,6	31599	1,7	129869	1,5	11676	1,9
SIBIU	240364	2,2	36188	1,9	192893	2,2	11283	1,9
SUCEAVA	265417	2,4	46582	2,5	199654	2,3	19181	3,2
TELEORMAN	118573	1,1	20854	1,1	92336	1,1	5383	0,9
TIMIS	373236	3,4	65869	3,5	287933	3,3	19434	3,2
TULCEA	128597	1,2	18887	1,0	103336	1,2	6374	1,1
VASLUI	133023	1,2	23269	1,3	100279	1,2	9475	1,6
VALCEA	165300	1,5	30216	1,6	124500	1,4	10584	1,7
VRANCEA	133372	1,2	22627	1,2	105128	1,2	5617	0,9
MUN. BUCURESTI	2232982	20,2	350424	18,9	1757519	20,4	125039	20,6
ILFOV	168441	1,5	32871	1,8	127685	1,5	7885	1,3

Table no. 2

Operations performed in the trade registers during December 1990 – January 2009, total by country and counties, share of categories of operations in the total of each county

Counties	Total of registered operations		out of which :					
			Registered companies		Changes in statutory documents		Strike off companies	
	No.	%	No.	%	No.	%	No.	%
0	1	2	3	4	5	6	11	12
Total ROMÂNIA	11060276	100,0	1857034	16,8	8597570	77,7	605672	5,5
ALBA	152979	100,0	29432	19,2	116934	76,4	6613	4,3
ARAD	256031	100,0	45351	17,7	197797	77,3	12883	5,0
ARGES	268206	100,0	47631	17,8	209516	78,1	11059	4,1
BACAU	246924	100,0	46368	18,8	187393	75,9	13163	5,3
BIHOR	316457	100,0	56983	18,0	241823	76,4	17651	5,6
BISTRITA-NASAUD	129543	100,0	22717	17,5	99406	76,7	7420	5,7
BOTOSANI	102036	100,0	22715	22,3	72543	71,1	6778	6,6
BRASOV	444359	100,0	58230	13,1	371119	83,5	15010	3,4
BRAILA	163209	100,0	25406	15,6	132710	81,3	5093	3,1
BUZAU	193660	100,0	33812	17,5	147045	75,9	12803	6,6
CARAS-SEVERIN	133495	100,0	22591	16,9	101371	75,9	9533	7,1
CALARASI	97230	100,0	18607	19,1	72957	75,0	5666	5,8
CLUJ	491565	100,0	86428	17,6	383522	78,0	21615	4,4
CONSTANTA	474932	100,0	77460	16,3	367672	77,4	29800	6,3
COVASNA	96661	100,0	15856	16,4	75456	78,1	5349	5,5
DAMBOVITA	159268	100,0	34471	21,6	109827	69,0	14970	9,4
DOLJ	297198	100,0	48541	16,3	232614	78,3	16043	5,4
GALATI	288415	100,0	43936	15,2	228809	79,3	15670	5,4
GIURGIU	87124	100,0	15281	17,5	66280	76,1	5563	6,4
GORJ	167252	100,0	21946	13,1	137884	82,4	7422	4,4
HARGHITA	158519	100,0	28856	18,2	123144	77,7	6519	4,1
HUNEDOARA	227537	100,0	37558	16,5	174505	76,7	15474	6,8
IALOMITA	105535	100,0	17288	16,4	81476	77,2	6771	6,4
IASI	362047	100,0	59433	16,4	287287	79,4	15327	4,2
MARAMURES	225041	100,0	47121	20,9	165320	73,5	12600	5,6
MEHEDINTI	119098	100,0	20638	17,3	89853	75,4	8607	7,2
MURES	315448	100,0	46647	14,8	252420	80,0	16381	5,2
NEAMT	243621	100,0	40244	16,5	187202	76,8	16175	6,6
OLT	134471	100,0	25944	19,3	98468	73,2	10059	7,5
PRAHOVA	375703	100,0	61801	16,4	294706	78,4	19196	5,1
SALAJ	94263	100,0	18356	19,5	69379	73,6	6528	6,9
SATU MARE	173144	100,0	31599	18,3	129869	75,0	11676	6,7
SIBIU	240364	100,0	36188	15,1	192893	80,3	11283	4,7
SUCEAVA	265417	100,0	46582	17,6	199654	75,2	19181	7,2
TELEORMAN	118573	100,0	20854	17,6	92336	77,9	5383	4,5
TIMIS	373236	100,0	65869	17,6	287933	77,1	19434	5,2
TULCEA	128597	100,0	18887	14,7	103336	80,4	6374	5,0
VASLUI	133023	100,0	23269	17,5	100279	75,4	9475	7,1
VALCEA	165300	100,0	30216	18,3	124500	75,3	10584	6,4
VRANCEA	133372	100,0	22627	17,0	105128	78,8	5617	4,2
MUN. BUCURESTI	2232982	100,0	350424	15,7	1757519	78,7	125039	5,6
ILFOV	168441	100,0	32871	19,5	127685	75,8	7885	4,7

Table no.3

Number and structure of incorporations in the trade registers during December 1990- January 2009

Period (year, month)	Registered companies	Percentage	
	No.	%	%
0	1	2	3
Total, 31 October 2008, out of which	1857035	100,00	
Year 1990	81	0,00	
Year 1991	95840	5,16	
Year 1992	137456	7,40	
Year 1993	117078	6,30	
Year 1994	137445	7,40	
Year 1995	65479	3,53	
Year 1996	62089	3,34	
Year 1997	55663	3,00	
Year 1998	63878	3,44	
Year 1999	57197	3,08	
Year 2000	57291	3,09	
Year 2001	61265	3,30	
Year 2002	84780	4,57	
Year 2003	123582	6,65	
Year 2004	144284	7,77	
Year 2005	159464	8,59	
Year 2006	135371	7,29	
Year 2007	144728	7,79	
Year 2008	144177	7,76	
Year 2009 (I - XII) out of which :	9880		100,0
January	9880		100,0

Note: Column 2 reveals the annual structure of incorporations; column 3 reveals the structure by months during the current year.

Diagram no.1

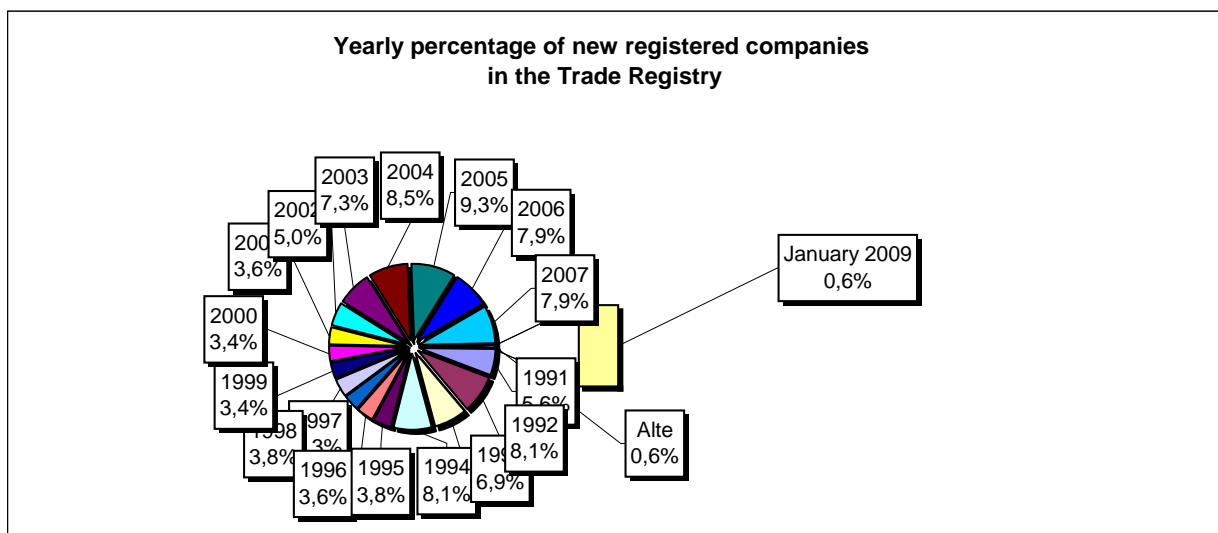


Table no. 4

**Number of incorporations in the trade registers by counties and capital sources during
December 1990 - January 2009**

Counties	Total		out of which:						Ranking by: *	
			Private capital				State majority capital			Mixed capital (state+private)
			out of which:				out of which:			
			PF	Companies	SC	APJ	RA	Companies		Companies
No.	%	No.	No.	No.	No.	No.	No.	No.		
0	1	2	3	4	5	6	6	7	8	9
Total ROMÂNIA	1857034	100,0	487383	1349792	2037	5471	1352	2382	8624	X
ALBA	29432	1,6	10248	18749	36	144	38	47	170	25
ARAD	45352	2,4	17068	27662	60	159	27	41	336	15
ARGES	47631	2,6	15152	32049	48	171	29	30	152	10
BACAU	46368	2,5	15481	30274	150	161	35	42	226	14
BIHOR	56984	3,1	14297	42066	63	148	39	62	309	8
BISTRITA-NASAUD	22717	1,2	7954	14462	46	98	19	29	109	30
BOTOSANI	22715	1,2	10532	11701	40	129	21	173	119	31
BRASOV	58230	3,1	12761	44988	58	117	47	87	172	7
BRAILA	25406	1,4	6753	18275	42	96	28	45	167	28
BUZAU	33812	1,8	10006	23415	46	144	28	42	131	21
CARAS-SEVERIN	22591	1,2	7726	14481	42	105	35	65	137	33
CALARASI	18607	1,0	5562	12747	22	86	18	77	95	38
CLUJ	86428	4,7	22402	63457	62	151	52	41	263	2
CONSTANTA	77460	4,2	15297	61227	87	204	51	51	543	3
COVASNA	15856	0,9	5676	9905	41	69	24	32	109	41
DAMBOVITA	34471	1,9	15404	18641	32	136	29	75	154	20
DOLJ	48540	2,6	10323	37712	39	165	40	58	203	9
GALATI	43936	2,4	9500	34041	35	136	30	51	143	16
GIURGIU	15281	0,8	3647	11296	15	82	22	109	110	42
GORJ	21946	1,2	5415	16088	26	184	50	83	100	34
HARGHITA	28856	1,6	11992	16413	64	90	23	43	231	26
HUNEDOARA	37558	2,0	9902	27123	33	82	40	93	285	18
IALOMITA	17288	0,9	6548	10487	27	74	15	46	91	40
IASI	59433	3,2	17073	41658	87	168	34	71	344	6
MARAMURES	47121	2,5	18643	28110	43	126	37	40	123	11
MEHEDINTI	20638	1,1	6789	13602	19	84	19	27	98	36
MURES	46647	2,5	17331	28860	68	156	30	34	168	12
NEAMT	40244	2,2	14734	25055	66	164	29	30	166	17
OLT	25944	1,4	10000	15542	27	162	26	64	123	27
PRAHOVA	61801	3,3	19162	42001	67	177	50	72	272	5
SALAJ	18356	1,0	7184	10912	41	108	19	28	64	39
SATU MARE	31599	1,7	10585	20689	41	90	19	42	134	23
SIBIU	36188	1,9	9242	26488	37	120	34	108	159	19
SUCEAVA	46582	2,5	21894	24097	73	203	30	64	221	13
TELEORMAN	20854	1,1	7194	13226	33	152	21	46	182	35
TIMIS	65869	3,5	11050	54154	69	141	38	69	348	4
TULCEA	18887	1,0	6663	11850	36	66	18	42	212	37
VASLUI	23269	1,3	11089	11856	22	109	16	41	136	29
VALCEA	30216	1,6	11861	17929	64	170	40	38	114	24
VRANCEA	22627	1,2	6815	15510	35	110	16	27	114	32
MUN. BUCURESTI	350423	18,9	26395	322486	64	140	115	104	1120	1
ILFOV	32871	1,8	4033	28508	31	94	21	13	171	22

*) The total number of incorporations (col 1)

Table no. 5

**Number of incorporations in the trade registers by counties and business categories
during December 1990 – January 2009**

County	Total		out of which:							
			PF	companies: 1360791				RA	SC	APJ
	SNC	SCS		SRL	SA					
	No.	%	No.	No.	No.	No.	No.	No.	No.	
0	1	2	3	4	5	6	7	8	9	10
Total ROMÂNIA	1857034	100,0	487383	32673	1600	1293121	33397	1352	2037	5471
ALBA	29432	1,6	10248	890	11	17493	572	38	36	144
ARAD	45351	2,4	17068	54	12	27275	696	27	60	159
ARGES	47631	2,6	15152	107	15	31273	836	29	48	171
BACAU	46368	2,5	15481	1299	4	28499	739	35	150	161
BIHOR	56983	3,1	14297	126	47	41341	922	39	63	148
BISTRITA-NASAUD	22717	1,2	7954	146	21	14012	421	19	46	98
BOTOSANI	22715	1,2	10532	468	1	11066	458	21	40	129
BRASOV	58230	3,1	12761	239	20	44105	883	47	58	117
BRAILA	25406	1,4	6753	376	12	17571	528	28	42	96
BUZAU	33812	1,8	10006	3747	46	19206	589	28	46	144
CARAS-SEVERIN	22591	1,2	7726	117	9	14083	474	35	42	105
CALARASI	18607	1,0	5562	609	3	11947	360	18	22	86
CLUJ	86428	4,7	22402	2112	21	60296	1332	52	62	151
CONSTANTA	77460	4,2	15297	311	23	59972	1515	51	87	204
COVASNA	15856	0,9	5676	148	4	9590	304	24	41	69
DAMBOVITA	34471	1,9	15404	60	8	18303	499	29	32	136
DOLJ	48541	2,6	10323	1560	8	35505	901	40	39	165
GALATI	43936	2,4	9500	1574	6	31795	860	30	35	136
GIURGIU	15281	0,8	3647	35	8	11142	330	22	15	82
GORJ	21946	1,2	5415	29	1	15740	501	50	26	184
HARGHITA	28856	1,6	11992	62	7	16121	497	23	64	90
HUNEDOARA	37558	2,0	9902	1166	98	25552	685	40	33	82
IALOMITA	17288	0,9	6548	268	12	9990	354	15	27	74
IASI	59433	3,2	17073	507	111	40429	1024	34	87	168
MARAMURES	47121	2,5	18643	1927	23	25717	605	37	43	126
MEHEDINTI	20638	1,1	6789	427	3	12959	338	19	19	84
MURES	46647	2,5	17331	37	34	28310	681	30	68	156
NEAMT	40244	2,2	14734	3293	30	21247	681	29	66	164
OLT	25944	1,4	10000	1611	1	13617	500	26	27	162
PRAHOVA	61801	3,3	19162	3122	15	38284	924	50	67	177
SALAJ	18356	1,0	7184	600	4	10101	299	19	41	108
SATU MARE	31599	1,7	10585	283	9	20091	481	19	41	90
SIBIU	36188	1,9	9242	778	49	25255	673	34	37	120
SUCEAVA	46582	2,5	21894	438	8	23339	597	30	73	203
TELEORMAN	20854	1,1	7194	272	399	12355	428	21	33	152
TIMIS	65869	3,5	11050	615	33	52644	1279	38	69	141
TULCEA	18887	1,0	6663	1363	114	10143	484	18	36	66
VASLUI	23269	1,3	11089	90	13	11508	422	16	22	109
VALCEA	30216	1,6	11861	364	6	17210	501	40	64	170
VRANCEA	22627	1,2	6815	356	10	14823	462	16	35	110
MUN. BUCURESTI	350424	18,9	26395	1038	309	315246	7117	115	64	140
ILFOV	32871	1,8	4033	49	32	27966	645	21	31	94

Table no. 6

**Operations performed in the trade registers by counties and categories of registration
in the month of January 2009**

County	Total of operations carried on		out of which:					
			New incorporations		Changes in statutory documents		Strike off companies	
	No.	%	No.	%	No.	%	No.	%
0	1	2	3	4	5	6	9	10
Total ROMÂNIA	115771	100,0	9880	8,5	101782	87,9	4109	3,5
ALBA	1757	100,0	150	8,5	1482	84,3	125	7,1
ARAD	2820	100,0	204	7,2	2518	89,3	98	3,5
ARGES	2171	100,0	245	11,3	1860	85,7	66	3,0
BACAU	2515	100,0	247	9,8	2193	87,2	75	3,0
BIHOR	3144	100,0	308	9,8	2702	85,9	134	4,3
BISTRITA-NASAUD	1251	100,0	159	12,7	1053	84,2	39	3,1
BOTOSANI	1110	100,0	88	7,9	967	87,1	55	5,0
BRASOV	3659	100,0	262	7,2	3273	89,5	124	3,4
BRAILA	1721	100,0	101	5,9	1552	90,2	68	4,0
BUZAU	1677	100,0	177	10,6	1451	86,5	49	2,9
CARAS-SEVERIN	1266	100,0	99	7,8	919	72,6	248	19,6
CALARASI	1054	100,0	90	8,5	864	82,0	100	9,5
CLUJ	5542	100,0	341	6,2	5015	90,5	186	3,4
CONSTANTA	4677	100,0	359	7,7	3985	85,2	333	7,1
COVASNA	764	100,0	92	12,0	616	80,6	56	7,3
DAMBOVITA	1921	100,0	218	11,3	1624	84,5	79	4,1
DOLJ	2464	100,0	271	11,0	2126	86,3	67	2,7
GALATI	2663	100,0	245	9,2	2305	86,6	113	4,2
GIURGIU	902	100,0	92	10,2	794	88,0	16	1,8
GORJ	1207	100,0	108	8,9	1056	87,5	43	3,6
HARGHITA	1525	100,0	279	18,3	1141	74,8	105	6,9
HUNEDOARA	3386	100,0	186	5,5	3136	92,6	64	1,9
IALOMITA	1052	100,0	107	10,2	905	86,0	40	3,8
IASI	3667	100,0	462	12,6	3085	84,1	120	3,3
MARAMURES	2845	100,0	314	11,0	2397	84,3	134	4,7
MEHEDINTI	842	100,0	97	11,5	712	84,6	33	3,9
MURES	3142	100,0	213	6,8	2832	90,1	97	3,1
NEAMT	2027	100,0	182	9,0	1755	86,6	90	4,4
OLT	1117	100,0	174	15,6	924	82,7	19	1,7
PRAHOVA	4246	100,0	313	7,4	3774	88,9	159	3,7
SALAJ	1166	100,0	121	10,4	976	83,7	69	5,9
SATU MARE	1649	100,0	204	12,4	1393	84,5	52	3,2
SIBIU	2731	100,0	159	5,8	2485	91,0	87	3,2
SUCEAVA	1712	100,0	212	12,4	1443	84,3	57	3,3
TELEORMAN	1097	100,0	107	9,8	928	84,6	62	5,7
TIMIS	2999	100,0	352	11,7	2540	84,7	107	3,6
TULCEA	11019	100,0	84	0,8	10911	99,0	24	0,2
VASLUI	1228	100,0	173	14,1	1012	82,4	43	3,5
VALCEA	1611	100,0	200	12,4	1290	80,1	121	7,5
VRANCEA	1408	100,0	106	7,5	1236	87,8	66	4,7
MUN. BUCURESTI	19105	100,0	1691	8,9	16970	88,8	444	2,3
ILFOV	1912	100,0	288	15,1	1582	82,7	42	2,2

*) by effect of implementation of Law no. 314/2001, art.1 and art. 6

Table no.7

Number of incorporations in the trade registers by counties and capital sources in the month of January 2009

County	Total		out of which:						Rnking by: *	
			Private capital				State majority capital			Mixed capital (state+private)
			out of which:				out of which:			
			PF	Companies	SC	APJ	RA	Companies		Companies
No.	%	No.	No.	No.		No.	No.	No.		
0	1	2	3	4	5	6	7	8	9	
Total ROMÂNIA	9880	100,0	4416	5455		5		1	3	X
ALBA	150	1,5	79	71						29
ARAD	204	2,1	101	101		1			1	19
ARGES	245	2,5	97	148						14
BACAU	247	2,5	119	128						13
BIHOR	308	3,1	161	147						8
BISTRITA-NASAUD	159	1,6	115	44						27
BOTOSANI	88	0,9	51	36		1				41
BRASOV	262	2,7	84	178						12
BRAILA	101	1,0	54	47						35
BUZAU	177	1,8	67	110						24
CARAS-SEVERIN	99	1,0	35	63		1				36
CALARASI	90	0,9	40	50						40
CLUJ	341	3,5	151	190						5
CONSTANTA	359	3,6	103	256						3
COVASNA	92	0,9	66	26						38
DAMBOVITA	218	2,2	125	92				1		16
DOLJ	271	2,7	124	147						11
GALATI	245	2,5	120	125						15
GIURGIU	92	0,9	29	62		1				39
GORJ	108	1,1	42	66						31
HARGHITA	279	2,8	206	73						10
HUNEDOARA	186	1,9	61	125						22
IALOMITA	107	1,1	66	41						32
IASI	462	4,7	209	253						2
MARAMURES	314	3,2	187	127						6
MEHEDINTI	97	1,0	60	37						37
MURES	213	2,2	99	114						17
NEAMT	182	1,8	64	118						23
OLT	174	1,8	84	90						25
PRAHOVA	313	3,2	141	172						7
SALAJ	121	1,2	64	57						30
SATU MARE	204	2,1	105	99						20
SIBIU	159	1,6	71	88						28
SUCEAVA	212	2,1	115	97						18
TELEORMAN	107	1,1	57	49				1		33
TIMIS	352	3,6	140	212						4
TULCEA	84	0,9	42	42						42
VASLUI	173	1,8	132	41						26
VALCEA	200	2,0	111	89						21
VRANCEA	106	1,1	49	56		1				34
MUN. BUCURESTI	1691	17,1	516	1175						1
ILFOV	288	2,9	74	213				1		9

*) The total number of incorporations (col 1)

*** Less than 0,01%

Table no.8

Number of incorporations in the trade registers by counties and business categories in the month of January 2009

County	Total		out of which:						APJ	
			PF	companies: 5459				RA		SC
	SNC	SCS		SRL	SA					
	No.	%	No.	No.	No.	No.	No.	No.		
0	1	2	3	4	5	6	7	8	9	
Total ROMÂNIA	9880	100,0	4416			5432	27			5
ALBA	150	1,5	79			71				
ARAD	204	2,1	101			98	4			1
ARGES	245	2,5	97			148				
BACAU	247	2,5	119			128				
BIHOR	308	3,1	161			145	2			
BISTRITA-NASAUD	159	1,6	115			44				
BOTOSANI	88	0,9	51			36				1
BRASOV	262	2,7	84			178				
BRAILA	101	1,0	54			47				
BUZAU	177	1,8	67			110				
CARAS-SEVERIN	99	1,0	35			63				1
CALARASI	90	0,9	40			50				
CLUJ	341	3,5	151			187	3			
CONSTANTA	359	3,6	103			254	2			
COVASNA	92	0,9	66			26				
DAMBOVITA	218	2,2	125			92	1			
DOLJ	271	2,7	124			147				
GALATI	245	2,5	120			125				
GIURGIU	92	0,9	29			62				1
GORJ	108	1,1	42			66				
HARGHITA	279	2,8	206			73				
HUNEDOARA	186	1,9	61			125				
IALOMITA	107	1,1	66			41				
IASI	462	4,7	209			253				
MARAMURES	314	3,2	187			127				
MEHEDINTI	97	1,0	60			37				
MURES	213	2,2	99			114				
NEAMT	182	1,8	64			118				
OLT	174	1,8	84			90				
PRAHOVA	313	3,2	141			169	3			
SALAJ	121	1,2	64			57				
SATU MARE	204	2,1	105			98	1			
SIBIU	159	1,6	71			87	1			
SUCEAVA	212	2,1	115			97				
TELEORMAN	107	1,1	57			50				
TIMIS	352	3,6	140			212				
TULCEA	84	0,9	42			42				
VASLUI	173	1,8	132			41				
VALCEA	200	2,0	111			89				
VRANCEA	106	1,1	49			56				1
MUN. BUCURESTI	1691	17,1	516			1166	9			
ILFOV	288	2,9	74			213	1			

Table no. 9

Number of incorporations in the trade registers by domains of activity and business categories in the month of January 2009

CAEN segment	Field of activity	Total		out of which:							
				PF	companies: 5459				RA	SC	APJ
		No.	%		No.	SNC	SCS	SRL			
				No.		No.	No.	No.	No.	No.	No.
0	1	2	3	4	5	6	7	8	9	10	11
	Total ROMÂNIA	9880	100,0	4416			5432	27			5
1	Agriculture, hunting and related service activities	1259	12,7	1137			117				5
2	Forestry and logging	56	0,6	12			44				
3	Fishing and aquaculture	117	1,2	106			11				
5	Mining of hard and brown coal	1	0,0				1				
6	Extraction of crude petroleum and natural gas										
7	Mining of metal ores										
8	Other mining and quarrying	13	0,1				13				
9	Mining support service activities	1	0,0					1			
10	Manufacture of food products	98	1,0	57			41				
11	Manufacture of beverages	4	0,0	4							
12	Manufacture of tobacco products										
13	Manufacture of textiles	11	0,1	4			7				
14	Manufacture of wearing apparel	44	0,4	16			28				
15	Tanning and dressing of leather; manufacture of luggage, handbags, saddlery, harness and footwear; dressing and dyeing of fur	20	0,2	3			17				
16	Manufacture of wood and of products of wood and cork, except furniture; manufacture of articles of straw and plaiting materials	49	0,5	23			26				
17	Manufacture of paper and paper products	8	0,1	2			6				
18	Printing and reproduction of recorded media	10	0,1	3			7				
19	Manufacture of coke and refined petroleum products										
20	Manufacture of chemicals and chemical products	4	0,0				4				
21	Manufacture of basic pharmaceutical products and pharmaceutical preparations										
22	Manufacture of rubber and plastic products	28	0,3	2			26				
23	Manufacture of other non-metallic mineral products	30	0,3	10			20				
24	Manufacture of basic metals	2	0,0				2				
25	Manufacture of fabricated metal products, except machinery and equipment	95	1,0	39			55	1			
26	Manufacture of computer, electronic and optical products	7	0,1				6	1			
27	Manufacture of electrical equipment	1	0,0					1			
28	Manufacture of machinery and equipment n.e.c.	5	0,1				5				
29	Manufacture of motor vehicles, trailers and semi-trailers										
30	Manufacture of other transport equipment	10	0,1	1			9				
31	Manufacture of furniture	46	0,5	15			31				
32	Other manufacturing	34	0,3	15			19				
33	Repair and installation of machinery and equipment	54	0,5	27			26	1			
35	Electricity, gas, steam and air conditioning supply	26	0,3				26				
36	Water collection, treatment and supply	2	0,0				1	1			
37	Sewerage	6	0,1	1			5				
38	Waste collection, treatment and disposal activities; materials recovery	28	0,3	1			27				
39	Remediation activities and other waste management services										
41	Construction of buildings	777	7,9	52			723	2			
42	Civil engineering	53	0,5	2			51				
43	Specialised construction activities	526	5,3	122			403	1			
45	Wholesale and retail trade and repair of motor vehicles and motorcycles	270	2,7	39			231				
46	Wholesale trade, except of motor vehicles and motorcycles	1057	10,7	207			850				
47	Retail trade, except of motor vehicles and motorcycles	1759	17,8	590			1165	3			1
49	Land transport and transport via pipelines	551	5,6	198			353				
50	Water transport	5	0,1	1			4				

Table no. 10

Number of incorporated trading companies and the value of the subscribed share capital, by counties, in the month of January 2009

County	Total registered companies		Subscribed capital		Average subscribed capital on company
	No.	%	thousand Lei	%	thousand Lei
0	1	2	3	4	5
Total ROMÂNIA	5459	100,0	316414,2	100,0	58,1
ALBA	71	1,3	60,3	0,0	0,8
ARAD	102	1,9	16261,2	5,1	159,4
ARGES	148	2,7	297,9	0,1	2,0
BACAU	128	2,3	38,8	0,0	0,3
BIHOR	147	2,7	465,3	0,1	3,2
BISTRITA-NASAUD	44	0,8	50,5	0,0	1,1
BOTOSANI	36	0,7	10,7	***	0,3
BRASOV	178	3,3	8043,4	2,5	45,2
BRAILA	47	0,9	16,8	***	0,4
BUZAU	110	2,0	42556,4	13,4	386,9
CARAS-SEVERIN	63	1,2	448,8	0,1	7,1
CALARASI	50	0,9	12,1	***	0,2
CLUJ	190	3,5	6427,8	2,0	33,8
CONSTANTA	256	4,7	18741,7	5,9	73,2
COVASNA	26	0,5	75,9	0,0	2,9
DAMBOVITA	93	1,7	663,3	0,2	7,1
DOLJ	147	2,7	48,2	0,0	0,3
GALATI	125	2,3	54,1	0,0	0,4
GIURGIU	62	1,1	13788,6	4,4	222,4
GORJ	66	1,2	34,2	0,0	0,5
HARGHITA	73	1,3	50,8	0,0	0,7
HUNEDOARA	125	2,3	30,8	***	0,2
IALOMITA	41	0,8	13,1	***	0,3
IASI	253	4,6	169,5	0,1	0,7
MARAMURES	127	2,3	118,0	0,0	0,9
MEHEDINTI	37	0,7	10,8	***	0,3
MURES	114	2,1	41,6	0,0	0,4
NEAMT	118	2,2	590,9	0,2	5,0
OLT	90	1,6	39,5	0,0	0,4
PRAHOVA	172	3,2	2141,6	0,7	12,5
SALAJ	57	1,0	207,0	0,1	3,6
SATU MARE	99	1,8	30,5	***	0,3
SIBIU	88	1,6	73,2	0,0	0,8
SUCEAVA	97	1,8	5489,7	1,7	56,6
TELEORMAN	50	0,9	13,5	***	0,3
TIMIS	212	3,9	419,0	0,1	2,0
TULCEA	42	0,8	11,8	***	0,3
VASLUI	41	0,8	14,6	***	0,4
VALCEA	89	1,6	45,6	0,0	0,5
VRANCEA	56	1,0	33,6	0,0	0,6
MUN. BUCURESTI	1175	21,5	171980,5	54,4	147,0
ILFOV	214	3,9	26792,6	8,5	125,8

Note: The average does not include filials because according to the Law no.31/1990 they are not juridical persons

*** Less than 0,01%

Table no. 11

Number of incorporated trading companies and the value of the subscribed share capital by legal forms, in the month of January 2009

Company type	Total registered companies		Subscribed capital		Average subscribed capital on company
	No.	%	thousand Lei	%	thousand Lei
0	1	2	3	4	5
Total ROMÂNIA	5459	100,0	316414,2	100,0	58,2
SNC					
SCS					
SA	27	0,5	178085,3	56,3	10475,6
SRL	5432	99,5	138329,0	43,7	25,5

Note: The average does not include filials because according to the Law no.31/1990 they are not juridical persons

*** Less than 0,01%

Diagram no.5

