



MINISTRY OF JUSTICE

THE NATIONAL TRADE REGISTER OFFICE

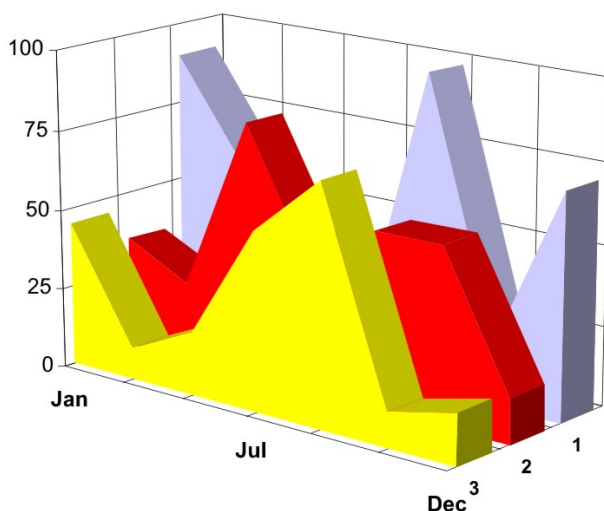
București, Bd. Unirii nr. 74, Bl. J3b, tronson II+III, sector 3; Telefon: +40 21 316.08.04, 316.08.10; Fax: +40 21 316.08.03; Cod poștal: 030837
Website: www.onrc.ro; E-mail: onrc@onrc.ro; Cod identificare Fiscală: 14942091

OPERATIONS IN THE CENTRAL TRADE REGISTER

STATISTIC SYNTHESIS

OF

**RECORDS IN THE CENTRAL TRADE REGISTER
- the 31th of December 2008 - provisional data -**



- ISSUE No. 205 -

**MINISTRY OF JUSTICE
THE NATIONAL TRADE REGISTER OFFICE**

- Operations such as incorporation of trading companies, submission of changes, and strike-off are carried out based on Law No.26/1990, as republished, Law No.31/1990, as republished and on the Methodological Norms no. P/608/1998.

- This work reflects the evolution of the operations with the Trade Register Office attached to Bucharest Law Court and the Trade Register Offices attached to County Law Courts.

- The data contained in the Central Trade Register refer to operations for which law sets out the obligation of being registered in the trade registers kept by the 42 trade register offices attached to law courts.

• The content of this publication shall not be reproduced, partly or entirely, in original or modified form, and shall not be stored in a recovery system and shall not be transmitted in any form or by any means without prior written authorization of the Ministry of Justice – The National Trade Register Office.

• The content of this publication shall not be used in articles, studies, books, as supporting or explanatory data only by clearly and accurately indicating the source.

CONTENTS

Page

1	Definitions	1
2.1	Data related to the period December 1990 –December 2008	3
<hr/>		
	Table no. 1 – Operations performed in the trade registers by categories of registration during December 1990 –December 2008, total by country and by counties, shares of counties in the total by country	3
	Table no. 2 – Operations performed in the trade registers by categories of registration during December 1990 –December 2008, total by country and counties, share of categories of operations in the total of each county	4
	Table no. 3 – Number and structure of incorporations in the trade registers during December 1990-December 2008	5
	Chart no. 1 – Structure by years of incorporations in the trade register	
	Table no. 4 – Number of incorporations in the trade registers by counties and capital sources during December 1990 - December 2008	6
	Table no. 5 – Number of incorporations in the trade registers by counties and business categories during December 1990 –December 2008	7
<hr/>		
2.2	Data related to December 2008	8
<hr/>		
	Table no. 6 – Operations performed in the trade registers by counties and categories of registrations in the month of December 2008	8
	Table no. 7 – Number of incorporations in the trade registers by counties and capital sources in the month of December 2008	9
	Table no. 8 – Number of incorporations in the trade registers by counties and business categories in the month of December 2008	10
	Table no. 9 –Number of incorporations in the trade registers by domains of activity and business categories in the month of December 2008	11-12
	Table no. 10 – Number of incorporated trading companies and the value of subscribed share capital, by counties, in the month of December 2008	13
	Table no. 11– Number of incorporated trading companies and the value of subscribed share capital by legal forms, in the month of December 2008	14
	Chart no. 5 – Average value of subscribed share capital by types of trading companies in the month of December 2008	14

Definitions

The Trade Register Office was established based on Law No. 26/1990, as republished and subsequently amended and supplemented, operates as an active institution since December 1990 and is twofold structured:

- at national level, represented by the National Trade Register Office organized under the authority of the Ministry of Justice
- at local level, represented by the 42 Trade Register Offices attached to Law Courts, organized under the subordination of the National Trade Register Office

Categories of persons liable to registration in the trade register:

- natural persons: authorized natural persons, individual enterprises and family enterprises currently carrying on trading activities;
 - legal persons represented by: Trading Companies, National Societies and Companies, National R&D Institutes, Autonomous Administrations, Co-operative Societies, Agricultural Co-operatives, Co-operative Organizations, Economic Interest Groupings, European Economic Interest Groupings, European Societies, European Co-operative Societies, branches of trading companies with legal establishment, operation and incorporation regime of trading company legal form under which they were incorporated.
- **Terms used in tables and charts**
- **Number of companies**, depending on the table, represents the number of trading companies incorporated during the reference period, the number of trading companies struck-off from the trade register. The following forms of organization are included: limited liability companies, joint-stock companies, limited partnerships by share, limited partnerships, general partnerships, and branches thereof.
 - **Value of subscribed share capital:**
 - **total, expressed in national currency:** the share capital value resulted by adding up the subscribed values (in cash and in kind) in national currency (lei)

➤ **Regions of economic development:**

<i>North-East:</i>	Suceava, Botoșani, Neamț, Iași, Bacău, Vaslui.
<i>South-East:</i>	Vrancea, Galați, Buzău, Brăila, Tulcea, Constanța.
<i>South-Muntenia:</i>	Argeș, Dâmbovița, Prahova, Teleorman, Giurgiu, Călărași, Ialomița.
<i>South-West Oltenia:</i>	Gorj, Vâlcea, Dolj, Mehedinți, Olt.
<i>West:</i>	Arad, Caraș-Severin, Hunedoara, Timiș.
<i>North-West:</i>	Bihor, Bistrița, Cluj, Satu Mare, Sălaj, Maramureș.
<i>Center:</i>	Alba, Brașov, Covasna, Harghita, Mureș, Sibiu.
<i>Bucharest-Ilfov:</i>	București, Ilfov.

NACE Code – The classification of economic activities in the national economy was approved by GO No. 656/1997, amended by Order No 601/2002 and Order no. 337/2007 of the President of the National Institute of Statistics, and complies with the international classification used in statistic reports and official documents. The activities are ranked by the harmonization principle, by sections, divisions, groups and classes.

Abbreviations

- **PF** - Natural Person; the following forms of organization are included in this category: natural persons and family associations registered until 25.04.2008, authorized natural persons, individual enterprises and family enterprises.
- **SNC** - General Partnership
- **SCS** - Limited Partnership
- **SCA** - Limited Partnership by Share
- **SA** - Joint-Stock Company
- **SRL** - Limited Liability Company
- **RA** - Autonomous Administration
- **APJ** - Other legal persons having the obligation to register in the trade register: National R&D Institutes, Economic Interest Groupings, European Economic Interest Groupings, European Societies, European Co-operative Societies, Agricultural Co-operatives, Co-operative Organizations.

Sources of Information:

The integrated IT system of the trade register is designed by The National Trade Register Office in compliance with the provisions of the related legislation in force. The source of information consists of the trade registers organized in computerized system, kept by the trade register offices attached to law courts.

Table no. 1

**Operations performed in the trade registers by categories of registration during
December 1990 – December 2008, total by country and by counties, share of
counties in the total by country**

Counties	Total of registered operations		out of which :					
			Registered companies		Changes in statutory documents		Strike off companies	
	No.	%	No.	%	No.	%	No.	%
0	1	2	3	4	5	6	11	12
Total ROMÂNIA	10906193	100,0	1847143	100,0	8495788	100,0	563262	100,0
ALBA	150584	1,4	29282	1,6	115452	1,4	5850	1,0
ARAD	252174	2,3	45147	2,4	195279	2,3	11748	2,1
ARGES	265422	2,4	47386	2,6	207656	2,4	10380	1,8
BACAU	243897	2,2	46120	2,5	185200	2,2	12577	2,2
BIHOR	312099	2,9	56675	3,1	239121	2,8	16303	2,9
BISTRITA-NASAUD	127851	1,2	22558	1,2	98353	1,2	6940	1,2
BOTOSANI	100497	0,9	22627	1,2	71576	0,8	6294	1,1
BRASOV	439181	4,0	57968	3,1	367846	4,3	13367	2,4
BRAILA	160969	1,5	25305	1,4	131158	1,5	4506	0,8
BUZAU	190946	1,8	33635	1,8	145594	1,7	11717	2,1
CARAS-SEVERIN	131887	1,2	22492	1,2	100452	1,2	8943	1,6
CALARASI	95883	0,9	18517	1,0	72093	0,8	5273	0,9
CLUJ	482291	4,4	86086	4,7	378507	4,5	17698	3,1
CONSTANTA	468768	4,3	77101	4,2	363687	4,3	27980	5,0
COVASNA	95536	0,9	15764	0,9	74840	0,9	4932	0,9
DAMBOVITA	156720	1,4	34253	1,9	108203	1,3	14264	2,5
DOLJ	293125	2,7	48270	2,6	230488	2,7	14367	2,6
GALATI	285069	2,6	43691	2,4	226504	2,7	14874	2,6
GIURGIU	86006	0,8	15189	0,8	65486	0,8	5331	0,9
GORJ	165595	1,5	21838	1,2	136828	1,6	6929	1,2
HARGHITA	156205	1,4	28577	1,5	122003	1,4	5625	1,0
HUNEDOARA	222691	2,0	37372	2,0	171369	2,0	13950	2,5
IALOMITA	104089	1,0	17181	0,9	80571	0,9	6337	1,1
IASI	356901	3,3	58969	3,2	284202	3,3	13730	2,4
MARAMURES	221506	2,0	46806	2,5	162923	1,9	11777	2,1
MEHEDINTI	117980	1,1	20540	1,1	89141	1,0	8299	1,5
MURES	311375	2,9	46434	2,5	249588	2,9	15353	2,7
NEAMT	240817	2,2	40062	2,2	185447	2,2	15308	2,7
OLT	132890	1,2	25770	1,4	97544	1,1	9576	1,7
PRAHOVA	369617	3,4	61488	3,3	290932	3,4	17197	3,1
SALAJ	92367	0,8	18234	1,0	68403	0,8	5730	1,0
SATU MARE	170897	1,6	31394	1,7	128476	1,5	11027	2,0
SIBIU	236216	2,2	36029	2,0	190408	2,2	9779	1,7
SUCEAVA	262691	2,4	46370	2,5	198211	2,3	18110	3,2
TELEORMAN	117229	1,1	20747	1,1	91408	1,1	5074	0,9
TIMIS	369013	3,4	65517	3,5	285393	3,4	18103	3,2
TULCEA	117033	1,1	18803	1,0	92425	1,1	5805	1,0
VASLUI	131372	1,2	23096	1,3	99267	1,2	9009	1,6
VALCEA	162825	1,5	30016	1,6	123210	1,5	9599	1,7
VRANCEA	131545	1,2	22520	1,2	103892	1,2	5133	0,9
MUN. BUCURESTI	2210529	20,3	348732	18,9	1740549	20,5	121248	21,5
ILFOV	165905	1,5	32582	1,8	126103	1,5	7220	1,3

Table no. 2

Operations performed in the trade registers during December 1990 – December 2008, total by country and counties, share of categories of operations in the total of each county

Counties	Total of registered operations		out of which :					
			Registered companies		Changes in statutory documents		Strike off companies	
	No.	%	No.	%	No.	%	No.	%
0	1	2	3	4	5	6	11	12
Total ROMÂNIA	10906193	100,0	1847143	16,9	8495788	77,9	563262	5,2
ALBA	150584	100,0	29282	19,4	115452	76,7	5850	3,9
ARAD	252174	100,0	45147	17,9	195279	77,4	11748	4,7
ARGES	265422	100,0	47386	17,9	207656	78,2	10380	3,9
BACAU	243897	100,0	46120	18,9	185200	75,9	12577	5,2
BIHOR	312099	100,0	56675	18,2	239121	76,6	16303	5,2
BISTRITA-NASAUD	127851	100,0	22558	17,6	98353	76,9	6940	5,4
BOTOSANI	100497	100,0	22627	22,5	71576	71,2	6294	6,3
BRASOV	439181	100,0	57968	13,2	367846	83,8	13367	3,0
BRAILA	160969	100,0	25305	15,7	131158	81,5	4506	2,8
BUZAU	190946	100,0	33635	17,6	145594	76,2	11717	6,1
CARAS-SEVERIN	131887	100,0	22492	17,1	100452	76,2	8943	6,8
CALARASI	95883	100,0	18517	19,3	72093	75,2	5273	5,5
CLUJ	482291	100,0	86086	17,8	378507	78,5	17698	3,7
CONSTANTA	468768	100,0	77101	16,4	363687	77,6	27980	6,0
COVASNA	95536	100,0	15764	16,5	74840	78,3	4932	5,2
DAMBOVITA	156720	100,0	34253	21,9	108203	69,0	14264	9,1
DOLJ	293125	100,0	48270	16,5	230488	78,6	14367	4,9
GALATI	285069	100,0	43691	15,3	226504	79,5	14874	5,2
GIURGIU	86006	100,0	15189	17,7	65486	76,1	5331	6,2
GORJ	165595	100,0	21838	13,2	136828	82,6	6929	4,2
HARGHITA	156205	100,0	28577	18,3	122003	78,1	5625	3,6
HUNEDOARA	222691	100,0	37372	16,8	171369	77,0	13950	6,3
IALOMITA	104089	100,0	17181	16,5	80571	77,4	6337	6,1
IASI	356901	100,0	58969	16,5	284202	79,6	13730	3,8
MARAMURES	221506	100,0	46806	21,1	162923	73,6	11777	5,3
MEHEDINTI	117980	100,0	20540	17,4	89141	75,6	8299	7,0
MURES	311375	100,0	46434	14,9	249588	80,2	15353	4,9
NEAMT	240817	100,0	40062	16,6	185447	77,0	15308	6,4
OLT	132890	100,0	25770	19,4	97544	73,4	9576	7,2
PRAHOVA	369617	100,0	61488	16,6	290932	78,7	17197	4,7
SALAJ	92367	100,0	18234	19,7	68403	74,1	5730	6,2
SATU MARE	170897	100,0	31394	18,4	128476	75,2	11027	6,5
SIBIU	236216	100,0	36029	15,3	190408	80,6	9779	4,1
SUCEAVA	262691	100,0	46370	17,7	198211	75,5	18110	6,9
TELEORMAN	117229	100,0	20747	17,7	91408	78,0	5074	4,3
TIMIS	369013	100,0	65517	17,8	285393	77,3	18103	4,9
TULCEA	117033	100,0	18803	16,1	92425	79,0	5805	5,0
VASLUI	131372	100,0	23096	17,6	99267	75,6	9009	6,9
VALCEA	162825	100,0	30016	18,4	123210	75,7	9599	5,9
VRANCEA	131545	100,0	22520	17,1	103892	79,0	5133	3,9
MUN. BUCURESTI	2210529	100,0	348732	15,8	1740549	78,7	121248	5,5
ILFOV	165905	100,0	32582	19,6	126103	76,0	7220	4,4

Table no.3

Number and structure of incorporations in the trade registers during December 1990- November 2008

Period (year, month)	Registered companies	Percentage	
	No.	%	%
0	1	2	3
Total, 31 October 2008, out of which	1847143	100,00	
Year 1990	81	0,00	
Year 1991	95840	5,19	
Year 1992	137456	7,44	
Year 1993	117072	6,34	
Year 1994	137445	7,44	
Year 1995	65479	3,54	
Year 1996	62089	3,36	
Year 1997	55663	3,01	
Year 1998	63878	3,46	
Year 1999	57197	3,10	
Year 2000	57291	3,10	
Year 2001	61265	3,32	
Year 2002	84780	4,59	
Year 2003	123582	6,69	
Year 2004	144284	7,81	
Year 2005	159464	8,63	
Year 2006	135371	7,33	
Year 2007	144728	7,84	
Year 2008 (I - XII) out of which :	144178		99,6
January	9833		6,8
February	15237		10,5
March	15253		10,5
April	13379		9,2
May	12489		8,6
June	11898		8,2
July	12772		8,8
August	10557		7,3
September	11725		8,10
October	12459		8,61
November	10164		7,02
December	8412		5,81

Note: Column 2 reveals the annual structure of incorporations; column 3 reveals the structure by months during the current year.

Diagram no.1

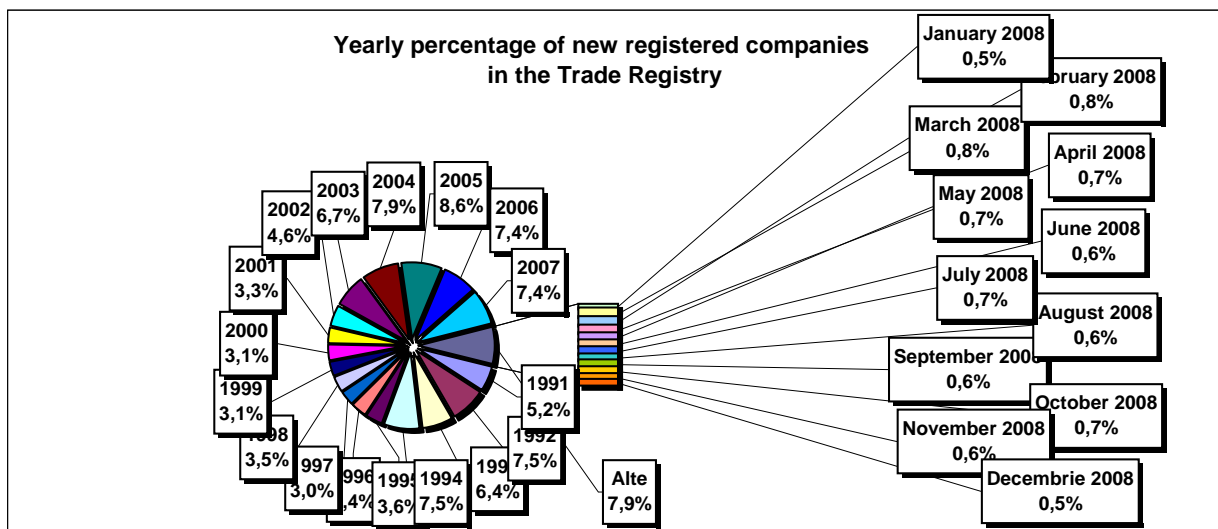


Table no. 4

**Number of incorporations in the trade registers by counties and capital sources during
December 1990 - December 2008**

Counties	Total		out of which:							Ranking by: *
			Private capital				State majority capital		Mixed capital (state+private)	
			out of which:				out of which:			
			PF	Companies	SC	APJ	RA	Companies	Companies	
No.	%	No.	No.	No.	No.	No.	No.	No.		
0	1	2	3	4	5	6	6	7	8	9
Total ROMÂNIA	1847143	100,0	482967	1344337	2037	5448	1352	2381	8621	X
ALBA	29282	1,6	10169	18678	36	144	38	47	170	25
ARAD	45148	2,4	16967	27561	60	157	27	41	335	15
ARGES	47386	2,6	15055	31901	48	171	29	30	152	10
BACAU	46120	2,5	15362	30146	150	159	35	42	226	14
BIHOR	56676	3,1	14136	41919	63	148	39	62	309	8
BISTRITA-NASAUD	22558	1,2	7839	14418	46	98	19	29	109	31
BOTOSANI	22627	1,2	10481	11665	40	128	21	173	119	30
BRASOV	57968	3,1	12677	44810	58	117	47	87	172	7
BRAILA	25305	1,4	6699	18228	42	96	28	45	167	28
BUZAU	33635	1,8	9939	23305	46	144	28	42	131	21
CARAS-SEVERIN	22492	1,2	7691	14418	42	104	35	65	137	33
CALARASI	18517	1,0	5522	12697	22	86	18	77	95	38
CLUJ	86086	4,7	22251	63267	62	150	52	41	263	2
CONSTANTA	77101	4,2	15194	60971	87	204	51	51	543	3
COVASNA	15764	0,9	5610	9879	41	69	24	32	109	41
DAMBOVITA	34253	1,9	15279	18549	32	136	29	75	153	20
DOLJ	48269	2,6	10199	37565	39	165	40	58	203	9
GALATI	43691	2,4	9380	33916	35	136	30	51	143	16
GIURGIU	15189	0,8	3618	11234	15	81	22	109	110	42
GORJ	21838	1,2	5373	16022	26	184	50	83	100	34
HARGHITA	28577	1,5	11786	16340	64	90	23	43	231	26
HUNEDOARA	37372	2,0	9841	26998	33	82	40	93	285	18
IALOMITA	17181	0,9	6482	10446	27	74	15	46	91	40
IASI	58969	3,2	16864	41405	87	164	34	71	344	6
MARAMURES	46806	2,5	18456	27983	43	124	37	40	123	11
MEHEDINTI	20540	1,1	6729	13565	19	83	19	27	98	36
MURES	46434	2,5	17232	28746	68	156	30	34	168	12
NEAMT	40062	2,2	14670	24937	66	164	29	30	166	17
OLT	25770	1,4	9916	15452	27	162	26	64	123	27
PRAHOVA	61488	3,3	19021	41829	67	177	50	72	272	5
SALAJ	18234	1,0	7120	10855	41	107	19	28	64	39
SATU MARE	31394	1,7	10480	20590	41	88	19	42	134	23
SIBIU	36029	2,0	9171	26400	37	120	34	108	159	19
SUCEAVA	46370	2,5	21779	24000	73	203	30	64	221	13
TELEORMAN	20747	1,1	7137	13177	33	152	21	45	182	35
TIMIS	65517	3,5	10910	53942	69	141	38	69	348	4
TULCEA	18803	1,0	6621	11808	36	66	18	42	212	37
VASLUI	23096	1,3	10957	11815	22	109	16	41	136	29
VALCEA	30016	1,6	11750	17840	64	170	40	38	114	24
VRANCEA	22520	1,2	6766	15454	35	108	16	27	114	32
MUN. BUCURESTI	348731	18,9	25879	321311	64	138	115	104	1120	1
ILFOV	32582	1,8	3959	28295	31	93	21	13	170	22

*) The total number of incorporations (col 1)

Table no. 5

**Number of incorporations in the trade registers by counties and business categories
during December 1990 – December 2008**

County	Total		out of which:							
			PF	companies: 1355339				RA	SC	APJ
	SNC	SCS		SRL	SA					
	No.	%	No.	No.	No.	No.	No.	No.	No.	
0	1	2	3	4	5	6	7	8	9	10
Total ROMÂNIA	1847143	100,0	482967	32673	1600	1287689	33370	1352	2037	5448
ALBA	29282	1,6	10169	890	11	17422	572	38	36	144
ARAD	45147	2,4	16967	54	12	27177	692	27	60	157
ARGES	47386	2,6	15055	107	15	31125	836	29	48	171
BACAU	46120	2,5	15362	1299	4	28371	739	35	150	159
BIHOR	56675	3,1	14136	126	47	41196	920	39	63	148
BISTRITA-NASAUD	22558	1,2	7839	146	21	13968	421	19	46	98
BOTOSANI	22627	1,2	10481	468	1	11030	458	21	40	128
BRASOV	57968	3,1	12677	239	20	43927	883	47	58	117
BRAILA	25305	1,4	6699	376	12	17524	528	28	42	96
BUZAU	33635	1,8	9939	3747	46	19096	589	28	46	144
CARAS-SEVERIN	22492	1,2	7691	117	9	14020	474	35	42	104
CALARASI	18517	1,0	5522	609	3	11897	360	18	22	86
CLUJ	86086	4,7	22251	2112	21	60109	1329	52	62	150
CONSTANTA	77101	4,2	15194	311	23	59718	1513	51	87	204
COVASNA	15764	0,9	5610	148	4	9564	304	24	41	69
DAMBOVITA	34253	1,9	15279	60	8	18211	498	29	32	136
DOLJ	48270	2,6	10199	1560	8	35358	901	40	39	165
GALATI	43691	2,4	9380	1574	6	31670	860	30	35	136
GIURGIU	15189	0,8	3618	35	8	11080	330	22	15	81
GORJ	21838	1,2	5373	29	1	15674	501	50	26	184
HARGHITA	28577	1,5	11786	62	7	16048	497	23	64	90
HUNEDOARA	37372	2,0	9841	1166	98	25427	685	40	33	82
IALOMITA	17181	0,9	6482	268	12	9949	354	15	27	74
IASI	58969	3,2	16864	507	111	40176	1024	34	87	164
MARAMURES	46806	2,5	18456	1927	23	25590	605	37	43	124
MEHEDINTI	20540	1,1	6729	427	3	12922	338	19	19	83
MURES	46434	2,5	17232	37	34	28196	681	30	68	156
NEAMT	40062	2,2	14670	3293	30	21129	681	29	66	164
OLT	25770	1,4	9916	1611	1	13527	500	26	27	162
PRAHOVA	61488	3,3	19021	3122	15	38115	921	50	67	177
SALAJ	18234	1,0	7120	600	4	10044	299	19	41	107
SATU MARE	31394	1,7	10480	283	9	19993	480	19	41	88
SIBIU	36029	2,0	9171	778	49	25168	672	34	37	120
SUCEAVA	46370	2,5	21779	438	8	23242	597	30	73	203
TELEORMAN	20747	1,1	7137	272	399	12305	428	21	33	152
TIMIS	65517	3,5	10910	615	33	52432	1279	38	69	141
TULCEA	18803	1,0	6621	1363	114	10101	484	18	36	66
VASLUI	23096	1,3	10957	90	13	11467	422	16	22	109
VALCEA	30016	1,6	11750	364	6	17121	501	40	64	170
VRANCEA	22520	1,2	6766	356	10	14767	462	16	35	108
MUN. BUCURESTI	348732	18,9	25879	1038	309	314080	7108	115	64	138
ILFOV	32582	1,8	3959	49	32	27753	644	21	31	93

Table no. 6

**Operations performed in the trade registers by counties and categories of registration
in the month of December 2008**

County	Total of operations carried on		out of which:					
			New incorporations		Changes in statutory documents		Strike off companies	
	No.	%	No.	%	No.	%	No.	%
0	1	2	3	4	5	6	9	10
Total ROMÂNIA	131369	100,0	8412	6,4	118200	90,0	4757	3,6
ALBA	2339	100,0	147	6,3	2098	89,7	94	4,0
ARAD	3851	100,0	202	5,2	3518	91,4	131	3,4
ARGES	2704	100,0	177	6,5	2456	90,8	71	2,6
BACAU	2710	100,0	190	7,0	2441	90,1	79	2,9
BIHOR	4520	100,0	267	5,9	4046	89,5	207	4,6
BISTRITA-NASAUD	1188	100,0	107	9,0	1041	87,6	40	3,4
BOTOSANI	916	100,0	108	11,8	766	83,6	42	4,6
BRASOV	4201	100,0	235	5,6	3823	91,0	143	3,4
BRAILA	15152	100,0	121	0,8	14975	98,8	56	0,4
BUZAU	2075	100,0	130	6,3	1711	82,5	234	11,3
CARAS-SEVERIN	1451	100,0	78	5,4	1166	80,4	207	14,3
CALARASI	1284	100,0	105	8,2	1001	78,0	178	13,9
CLUJ	6016	100,0	444	7,4	5428	90,2	144	2,4
CONSTANTA	4562	100,0	301	6,6	4159	91,2	102	2,2
COVASNA	782	100,0	64	8,2	673	86,1	45	5,8
DAMBOVITA	1327	100,0	154	11,6	1098	82,7	75	5,7
DOLJ	2565	100,0	230	9,0	2280	88,9	55	2,1
GALATI	2650	100,0	175	6,6	2299	86,8	176	6,6
GIURGIU	931	100,0	86	9,2	814	87,4	31	3,3
GORJ	1371	100,0	101	7,4	1242	90,6	28	2,0
HARGHITA	1732	100,0	127	7,3	1558	90,0	47	2,7
HUNEDOARA	2504	100,0	137	5,5	2284	91,2	83	3,3
IALOMITA	748	100,0	70	9,4	656	87,7	22	2,9
IASI	3166	100,0	338	10,7	2653	83,8	175	5,5
MARAMURES	2778	100,0	216	7,8	2328	83,8	234	8,4
MEHEDINTI	829	100,0	83	10,0	714	86,1	32	3,9
MURES	3717	100,0	201	5,4	3408	91,7	108	2,9
NEAMT	1864	100,0	136	7,3	1632	87,6	96	5,2
OLT	958	100,0	120	12,5	812	84,8	26	2,7
PRAHOVA	4290	100,0	266	6,2	3807	88,7	217	5,1
SALAJ	1253	100,0	78	6,2	988	78,9	187	14,9
SATU MARE	1658	100,0	123	7,4	1476	89,0	59	3,6
SIBIU	2358	100,0	180	7,6	2006	85,1	172	7,3
SUCEAVA	2215	100,0	156	7,0	1742	78,6	317	14,3
TELEORMAN	1068	100,0	132	12,4	906	84,8	30	2,8
TIMIS	3600	100,0	341	9,5	3115	86,5	144	4,0
TULCEA	1380	100,0	71	5,1	1273	92,2	36	2,6
VASLUI	2336	100,0	102	4,4	2199	94,1	35	1,5
VALCEA	1416	100,0	88	6,2	1224	86,4	104	7,3
VRANCEA	1291	100,0	85	6,6	1144	88,6	62	4,8
MUN. BUCURESTI	25209	100,0	1649	6,5	23163	91,9	397	1,6
ILFOV	2404	100,0	291	12,1	2077	86,4	36	1,5

*) by effect of implementation of Law no. 314/2001, art.1 and art. 6

Table no.7

Number of incorporations in the trade registers by counties and capital sources in the month of December 2008

County	Total		out of which:						Ranking by: *	
			Private capital				State majority capital			Mixed capital (state+private)
			out of which:				out of which:			
			PF	Companies	SC	APJ	RA	Companies		Companies
No.	%	No.	No.	No.	No.	No.	No.			
0	1	2	3	4	5	6	7	8	9	
Total ROMÂNIA	8412	100,0	2921	5477	3	6		2	3	X
ALBA	147	1,7	49	98						20
ARAD	202	2,4	64	137	1					12
ARGES	177	2,1	46	130		1				16
BACAU	190	2,3	79	110	1					14
BIHOR	267	3,2	118	149						7
BISTRITA-NASAUD	107	1,3	47	60						30
BOTOSANI	108	1,3	61	47						29
BRASOV	235	2,8	90	145						9
BRAILA	121	1,4	50	71						27
BUZAU	130	1,5	57	72		1				24
CARAS-SEVERIN	78	0,9	22	55	1					38
CALARASI	105	1,2	55	50						31
CLUJ	444	5,3	105	339						2
CONSTANTA	301	3,6	94	206		1				5
COVASNA	64	0,8	23	41						42
DAMBOVITA	154	1,8	87	67						19
DOLJ	230	2,7	74	156						10
GALATI	175	2,1	79	95		1				17
GIURGIU	86	1,0	18	67		1				35
GORJ	101	1,2	47	54						33
HARGHITA	127	1,5	64	62				1		25
HUNEDOARA	137	1,6	38	97				1	1	21
IALOMITA	70	0,8	24	46						41
IASI	338	4,0	136	202						4
MARAMURES	216	2,6	112	104						11
MEHEDINTI	83	1,0	44	39						37
MURES	201	2,4	83	118						13
NEAMT	136	1,6	41	95						22
OLT	120	1,4	43	77						28
PRAHOVA	266	3,2	93	173						8
SALAJ	78	0,9	26	52						39
SATU MARE	123	1,5	58	65						26
SIBIU	180	2,1	72	107				1		15
SUCEAVA	156	1,9	70	86						18
TELEORMAN	132	1,6	58	74						23
TIMIS	341	4,1	85	256						3
TULCEA	71	0,8	30	41						40
VASLUI	102	1,2	49	53						32
VALCEA	88	1,0	33	54				1		34
VRANCEA	85	1,0	27	57		1				36
MUN. BUCURESTI	1649	19,6	423	1226						1
ILFOV	291	3,5	47	244						6

*) The total number of incorporations (col 1)

*** Less than 0,01%

Table no.8

Number of incorporations in the trade registers by counties and business categories in the month of December 2008

County	Total		out of which:						APJ	
			PF	companies: 5482				RA		SC
	SNC	SCS		SRL	SA					
	No.	%	No.	No.	No.	No.	No.	No.		
0	1	2	3	4	5	6	7	8	9	
Total ROMÂNIA	8412	100,0	2921		3	5439	40		3	6
ALBA	147	1,7	49			98				
ARAD	202	2,4	64			136	1		1	
ARGES	177	2,1	46			130				1
BACAU	190	2,3	79			109	1		1	
BIHOR	267	3,2	118			149				
BISTRITA-NASAUD	107	1,3	47			60				
BOTOSANI	108	1,3	61			47				
BRASOV	235	2,8	90			142	3			
BRAILA	121	1,4	50			69	2			
BUZAU	130	1,5	57			72				1
CARAS-SEVERIN	78	0,9	22			54	1		1	
CALARASI	105	1,2	55			50				
CLUJ	444	5,3	105			339				
CONSTANTA	301	3,6	94			206				1
COVASNA	64	0,8	23			39	2			
DAMBOVITA	154	1,8	87			66	1			
DOLJ	230	2,7	74			156				
GALATI	175	2,1	79			94	1			1
GIURGIU	86	1,0	18			67				1
GORJ	101	1,2	47			54				
HARGHITA	127	1,5	64			60	3			
HUNEDOARA	137	1,6	38			98	1			
IALOMITA	70	0,8	24			46				
IASI	338	4,0	136			202				
MARAMURES	216	2,6	112			102	2			
MEHEDINTI	83	1,0	44			39				
MURES	201	2,4	83			117	1			
NEAMT	136	1,6	41			95				
OLT	120	1,4	43			77				
PRAHOVA	266	3,2	93			173				
SALAJ	78	0,9	26			52				
SATU MARE	123	1,5	58			65				
SIBIU	180	2,1	72			106	2			
SUCEAVA	156	1,9	70			86				
TELEORMAN	132	1,6	58			74				
TIMIS	341	4,1	85		3	250	3			
TULCEA	71	0,8	30			41				
VASLUI	102	1,2	49			53				
VALCEA	88	1,0	33			55				
VRANCEA	85	1,0	27			57				1
MUN. BUCURESTI	1649	19,6	423			1215	11			
ILFOV	291	3,5	47			239	5			

Table no. 9

Number of incorporations in the trade registers by domains of activity and business categories in the month of December 2008

CAEN segment	Field of activity	Total		out of which:							
				PF	companies: 5482				RA	SC	APJ
		No.	%		No.	SNC	SCS	SRL			
				No.		No.	No.	No.	No.	No.	No.
0	1	2	3	4	5	6	7	8	9	10	11
	Total ROMÂNIA	8412	100,0	2921		3	5439	40		3	6
1	Agriculture, hunting and related service activities	458	5,4	347		2	104	1			4
2	Forestry and logging	56	0,7	6		1	49				
3	Fishing and aquaculture	92	1,1	83			8				1
5	Mining of hard and brown coal										
6	Extraction of crude petroleum and natural gas	1	0,0				1				
7	Mining of metal ores										
8	Other mining and quarrying	17	0,2				17				
9	Mining support service activities	2	0,0				2				
10	Manufacture of food products	63	0,7	20			43				
11	Manufacture of beverages	8	0,1	6			2				
12	Manufacture of tobacco products										
13	Manufacture of textiles	14	0,2	3			11				
14	Manufacture of wearing apparel	38	0,5	11			27				
15	Tanning and dressing of leather; manufacture of luggage, handbags, saddlery, harness and footwear; dressing and dyeing of fur	12	0,1	2			10				
16	Manufacture of wood and of products of wood and cork, except furniture; manufacture of articles of straw and plaiting materials	49	0,6	13			35	1			
17	Manufacture of paper and paper products	6	0,1	3			3				
18	Printing and reproduction of recorded media	28	0,3	4			23	1			
19	Manufacture of coke and refined petroleum products	1	0,0				1				
20	Manufacture of chemicals and chemical products	5	0,1				5				
21	Manufacture of basic pharmaceutical products and pharmaceutical preparations	2	0,0				2				
22	Manufacture of rubber and plastic products	30	0,4	5			23	2			
23	Manufacture of other non-metallic mineral products	20	0,2	5			15				
24	Manufacture of basic metals	1	0,0				1				
25	Manufacture of fabricated metal products, except machinery and equipment	72	0,9	28			42	2			
26	Manufacture of computer, electronic and optical products	5	0,1				5				
27	Manufacture of electrical equipment	7	0,1	1			6				
28	Manufacture of machinery and equipment n.e.c.	7	0,1				7				
29	Manufacture of motor vehicles, trailers and semi-trailers	3	0,0				3				
30	Manufacture of other transport equipment	6	0,1	1			5				
31	Manufacture of furniture	40	0,5	10			30				
32	Other manufacturing	20	0,2	8			12				
33	Repair and installation of machinery and equipment	32	0,4	11			21				
35	Electricity, gas, steam and air conditioning supply	30	0,4				29	1			
36	Water collection, treatment and supply	3	0,0				3				
37	Sewerage	6	0,1	1			5				
38	Waste collection, treatment and disposal activities; materials recovery	28	0,3	1			27				
39	Remediation activities and other waste management services										
41	Construction of buildings	777	9,2	52			723	2			
42	Civil engineering	53	0,6	2			51				
43	Specialised construction activities	526	6,3	122			403	1			
45	Wholesale and retail trade and repair of motor vehicles and motorcycles	270	3,2	39			231				
46	Wholesale trade, except of motor vehicles and motorcycles	1057	12,6	207			850				1
47	Retail trade, except of motor vehicles and motorcycles	1759	20,9	590			1165	3		1	
49	Land transport and transport via pipelines	551	6,6	198			353				
50	Water transport	5	0,1	1			4				

Table no. 10

Number of incorporated trading companies and the value of the subscribed share capital, by counties, in the month of December 2008

County	Total registered companies		Subscribed capital		Average subscribed capital on company
	No.	%	thousand Lei	%	thousand Lei
0	1	2	3	4	5
Total ROMÂNIA	5482	100,0	210518,9	100,0	38,6
ALBA	98	1,8	66,3	0,0	0,7
ARAD	137	2,5	13618,8	6,5	100,9
ARGES	130	2,4	436,8	0,2	3,4
BACAU	110	2,0	54,5	0,0	0,5
BIHOR	149	2,7	100,4	0,0	0,7
BISTRITA-NASAUD	60	1,1	3525,3	1,7	59,8
BOTOSANI	47	0,9	13,9	***	0,3
BRASOV	145	2,6	507,6	0,2	3,5
BRAILA	71	1,3	6894,6	3,3	97,1
BUZAU	72	1,3	11911,2	5,7	165,4
CARAS-SEVERIN	55	1,0	136,7	0,1	2,5
CALARASI	50	0,9	10,7	***	0,2
CLUJ	339	6,2	916,6	0,4	2,7
CONSTANTA	206	3,8	1016,3	0,5	4,9
COVASNA	41	0,7	16,3	***	0,4
DAMBOVITA	67	1,2	16,3	***	0,2
DOLJ	156	2,8	181,4	0,1	1,2
GALATI	95	1,7	55,1	0,0	0,6
GIURGIU	67	1,2	29,3	0,0	0,4
GORJ	54	1,0	244,1	0,1	4,5
HARGHITA	63	1,1	1251,9	0,6	20,2
HUNEDOARA	99	1,8	168,8	0,1	1,7
IALOMITA	46	0,8	63,2	0,0	1,4
IASI	202	3,7	169,0	0,1	0,8
MARAMURES	104	1,9	13628,9	6,5	132,3
MEHEDINTI	39	0,7	20,7	***	0,5
MURES	118	2,2	128,2	0,1	1,1
NEAMT	95	1,7	33,2	0,0	0,3
OLT	77	1,4	19,6	***	0,3
PRAHOVA	173	3,2	1415,8	0,7	8,3
SALAJ	52	0,9	79,8	0,0	1,5
SATU MARE	65	1,2	31,0	0,0	0,5
SIBIU	108	2,0	427,7	0,2	4,0
SUCEAVA	86	1,6	112,4	0,1	1,3
TELEORMAN	74	1,3	38,2	0,0	0,5
TIMIS	256	4,7	40491,3	19,2	159,4
TULCEA	41	0,7	1314,4	0,6	32,1
VASLUI	53	1,0	13,9	***	0,3
VALCEA	55	1,0	619,5	0,3	11,3
VRANCEA	57	1,0	38,0	0,0	0,7
MUN. BUCURESTI	1226	22,4	73364,9	34,8	60,4
ILFOV	244	4,5	37336,1	17,7	154,9

Note: The average does not include filials because according to the Law no.31/1990 they are not juridical persons

*** Less than 0,01%

Table no. 11

Number of incorporated trading companies and the value of the subscribed share capital by legal forms, in the month of December 2008

Company type	Total registered companies		Subscribed capital		Average subscribed capital on company
	No.	%	thousand Lei	%	thousand Lei
0	1	2	3	4	5
Total ROMÂNIA	5482	100,0	210518,9	100,0	38,6
SNC					
SCS	3	0,1	30220,8	14,4	10073,6
SA	40	0,7	83075,9	39,5	3461,5
SRL	5439	99,2	97222,2	46,2	17,9
SCA					

Note: The average does not include filials because according to the Law no.31/1990 they are not juridical persons

*** Less than 0,01%

Diagram no.5

