



MINISTRY OF JUSTICE

THE NATIONAL TRADE REGISTER OFFICE

București, Bd. Unirii nr. 74, Bl. J3b, tronson II+III, sector 3; Telefon: +40 21 316.08.04, 316.08.10; Fax: +40 21 316.08.03; Cod poștal: 030837
Website: www.onrc.ro; E-mail: onrc@onrc.ro; Cod identificare Fiscală: 14942091

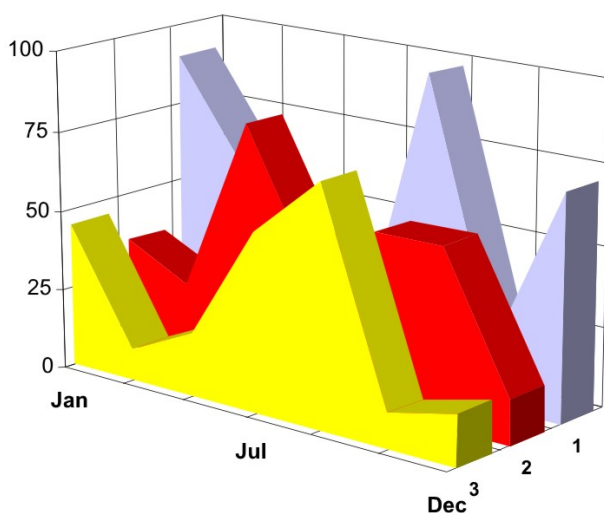
OPERATIONS IN THE CENTRAL TRADE REGISTER

STATISTIC SYNTHESIS

OF

RECORDS IN THE CENTRAL TRADE REGISTER

- the 30th of November 2008 - provisional data -



- ISSUE No. 204 -

**MINISTRY OF JUSTICE
THE NATIONAL TRADE REGISTER OFFICE**

- Operations such as incorporation of trading companies, submission of changes, and strike-off are carried out based on Law No.26/1990, as republished, Law No.31/1990, as republished and on the Methodological Norms no. P/608/1998.

- This work reflects the evolution of the operations with the Trade Register Office attached to Bucharest Law Court and the Trade Register Offices attached to County Law Courts.

- The data contained in the Central Trade Register refer to operations for which law sets out the obligation of being registered in the trade registers kept by the 42 trade register offices attached to law courts.

• The content of this publication shall not be reproduced, partly or entirely, in original or modified form, and shall not be stored in a recovery system and shall not be transmitted in any form or by any means without prior written authorization of the Ministry of Justice – The National Trade Register Office.

• The content of this publication November be used in articles, studies, books, as supporting or explanatory data only by clearly and accurately indicating the source.

CONTENTS

Page

1	Definitions	1
2.1	Data related to the period December 1990 –November 2008	3
<hr/>		
	Table no. 1 – Operations performed in the trade registers by categories of registration during December 1990 –November 2008, total by country and by counties, shares of counties in the total by country	3
	Table no. 2 – Operations performed in the trade registers by categories of registration during December 1990 –November 2008, total by country and counties, share of categories of operations in the total of each county	4
	Table no. 3 – Number and structure of incorporations in the trade registers during December 1990-November 2008	5
	Chart no. 1 – Structure by years of incorporations in the trade register	
	Table no. 4 – Number of incorporations in the trade registers by counties and capital sources during December 1990 - November 2008	6
	Table no. 5 – Number of incorporations in the trade registers by counties and business categories during December 1990 –November 2008	7
<hr/>		
2.2	Data related to November 2008	8
<hr/>		
	Table no. 6 – Operations performed in the trade registers by counties and categories of registrations in the month of November 2008	8
	Table no. 7 – Number of incorporations in the trade registers by counties and capital sources in the month of November 2008	9
	Table no. 8 – Number of incorporations in the trade registers by counties and business categories in the month of November 2008	10
	Table no. 9 –Number of incorporations in the trade registers by domains of activity and business categories in the month of November 2008	11-12
	Table no. 10 – Number of incorporated trading companies and the value of subscribed share capital, by counties, in the month of November 2008	13
	Table no. 11– Number of incorporated trading companies and the value of subscribed share capital by legal forms, in the month of November 2008	14
	Chart no. 5 – Average value of subscribed share capital by types of trading companies in the month of November 2008	14

Definitions

The Trade Register Office was established based on Law No. 26/1990, as republished and subsequently amended and supplemented, operates as an active institution since December 1990 and is twofold structured:

- at national level, represented by the National Trade Register Office organized under the authority of the Ministry of Justice
- at local level, represented by the 42 Trade Register Offices attached to Law Courts, organized under the subordination of the National Trade Register Office

Categories of persons liable to registration in the trade register:

- natural persons: authorized natural persons, individual enterprises and family enterprises currently carrying on trading activities;
 - legal persons represented by: Trading Companies, National Societies and Companies, National R&D Institutes, Autonomous Administrations, Co-operative Societies, Agricultural Co-operatives, Co-operative Organizations, Economic Interest Groupings, European Economic Interest Groupings, European Societies, European Co-operative Societies, branches of trading companies with legal establishment, operation and incorporation regime of trading company legal form under which they were incorporated.
- **Terms used in tables and charts**
- **Number of companies**, depending on the table, represents the number of trading companies incorporated during the reference period, the number of trading companies struck-off from the trade register. The following forms of organization are included: limited liability companies, joint-stock companies, limited partnerships by share, limited partnerships, general partnerships, and branches thereof.
 - **Value of subscribed share capital:**
 - **total, expressed in national currency:** the share capital value resulted by adding up the subscribed values (in cash and in kind) in national currency (lei)

➤ **Regions of economic development:**

<i>North-East:</i>	Suceava, Botoșani, Neamț, Iași, Bacău, Vaslui.
<i>South-East:</i>	Vrancea, Galați, Buzău, Brăila, Tulcea, Constanța.
<i>South-Muntenia:</i>	Argeș, Dâmbovița, Prahova, Teleorman, Giurgiu, Călărași, Ialomița.
<i>South-West Oltenia:</i>	Gorj, Vâlcea, Dolj, Mehedinți, Olt.
<i>West:</i>	Arad, Caraș-Severin, Hunedoara, Timiș.
<i>North-West:</i>	Bihor, Bistrița, Cluj, Satu Mare, Sălaj, Maramureș.
<i>Center:</i>	Alba, Brașov, Covasna, Harghita, Mureș, Sibiu.
<i>Bucharest-Ilfov:</i>	București, Ilfov.

NACE Code – The classification of economic activities in the national economy was approved by GO No. 656/1997, amended by Order No 601/2002 and Order no. 337/2007 of the President of the National Institute of Statistics, and complies with the international classification used in statistic reports and official documents. The activities are ranked by the harmonization principle, by sections, divisions, groups and classes.

Abbreviations

- **PF** - Natural Person; the following forms of organization are included in this category: natural persons and family associations registered until 25.04.2008, authorized natural persons, individual enterprises and family enterprises.
- **SNC** - General Partnership
- **SCS** - Limited Partnership
- **SCA** - Limited Partnership by Share
- **SA** - Joint-Stock Company
- **SRL** - Limited Liability Company
- **RA** - Autonomous Administration
- **APJ** - Other legal persons having the obligation to register in the trade register: National R&D Institutes, Economic Interest Groupings, European Economic Interest Groupings, European Societies, European Co-operative Societies, Agricultural Co-operatives, Co-operative Organizations.

Sources of Information:

The integrated IT system of the trade register is designed by The National Trade Register Office in compliance with the provisions of the related legislation in force. The source of information consists of the trade registers organized in computerized system, kept by the trade register offices attached to law courts.

Table no. 1

**Operations performed in the trade registers by categories of registration during
December 1990 – November 2008, total by country and by counties, share of
counties in the total by country**

Counties	Total of registered operations		out of which :					
			Registered companies		Changes in statutory documents		Strike off companies	
	No.	%	No.	%	No.	%	No.	%
0	1	2	3	4	5	6	11	12
Total ROMÂNIA	10774830	100,0	1838737	100,0	8377588	100,0	558505	100,0
ALBA	148245	1,4	29135	1,6	113354	1,4	5756	1,0
ARAD	248323	2,3	44945	2,4	191761	2,3	11617	2,1
ARGES	262718	2,4	47209	2,6	205200	2,4	10309	1,8
BACAU	241187	2,2	45930	2,5	182759	2,2	12498	2,2
BIHOR	307579	2,9	56408	3,1	235075	2,8	16096	2,9
BISTRITA-NASAUD	126663	1,2	22451	1,2	97312	1,2	6900	1,2
BOTOSANI	99581	0,9	22519	1,2	70810	0,8	6252	1,1
BRASOV	434980	4,0	57733	3,1	364023	4,3	13224	2,4
BRAILA	145817	1,4	25184	1,4	116183	1,4	4450	0,8
BUZAU	188871	1,8	33505	1,8	143883	1,7	11483	2,1
CARAS-SEVERIN	130437	1,2	22415	1,2	99286	1,2	8736	1,6
CALARASI	94599	0,9	18412	1,0	71092	0,8	5095	0,9
CLUJ	476276	4,4	85643	4,7	373079	4,5	17554	3,1
CONSTANTA	464206	4,3	76800	4,2	359528	4,3	27878	5,0
COVASNA	94754	0,9	15700	0,9	74167	0,9	4887	0,9
DAMBOVITA	155393	1,4	34099	1,9	107105	1,3	14189	2,5
DOLJ	290560	2,7	48040	2,6	228208	2,7	14312	2,6
GALATI	282419	2,6	43516	2,4	224205	2,7	14698	2,6
GIURGIU	85075	0,8	15103	0,8	64672	0,8	5300	0,9
GORJ	164224	1,5	21737	1,2	135586	1,6	6901	1,2
HARGHITA	154473	1,4	28450	1,5	120445	1,4	5578	1,0
HUNEDOARA	220187	2,0	37235	2,0	169085	2,0	13867	2,5
IALOMITA	103341	1,0	17111	0,9	79915	1,0	6315	1,1
IASI	353735	3,3	58631	3,2	281549	3,4	13555	2,4
MARAMURES	218728	2,0	46590	2,5	160595	1,9	11543	2,1
MEHEDINTI	117152	1,1	20458	1,1	88427	1,1	8267	1,5
MURES	307658	2,9	46233	2,5	246180	2,9	15245	2,7
NEAMT	238953	2,2	39926	2,2	183815	2,2	15212	2,7
OLT	131932	1,2	25650	1,4	96732	1,2	9550	1,7
PRAHOVA	365327	3,4	61222	3,3	287125	3,4	16980	3,0
SALAJ	91115	0,8	18157	1,0	67415	0,8	5543	1,0
SATU MARE	169239	1,6	31271	1,7	127000	1,5	10968	2,0
SIBIU	233858	2,2	35849	1,9	188402	2,2	9607	1,7
SUCEAVA	260476	2,4	46214	2,5	196469	2,3	17793	3,2
TELEORMAN	116161	1,1	20615	1,1	90502	1,1	5044	0,9
TIMIS	365413	3,4	65176	3,5	282278	3,4	17959	3,2
TULCEA	115653	1,1	18732	1,0	91152	1,1	5769	1,0
VASLUI	129036	1,2	22994	1,3	97068	1,2	8974	1,6
VALCEA	161409	1,5	29928	1,6	121986	1,5	9495	1,7
VRANCEA	130255	1,2	22436	1,2	102748	1,2	5071	0,9
MUN. BUCURESTI	2185320	20,3	347083	18,9	1717386	20,5	120851	21,6
ILFOV	163502	1,5	32292	1,8	124026	1,5	7184	1,3

Table no. 2

Operations performed in the trade registers during December 1990 – November 2008, total by country and counties, share of categories of operations in the total of each county

Counties	Total of registered operations		out of which :					
			Registered companies		Changes in statutory documents		Strike off companies	
	No.	%	No.	%	No.	%	No.	%
0	1	2	3	4	5	6	11	12
Total ROMÂNIA	10774830	100,0	1838737	17,1	8377588	77,8	558505	5,2
ALBA	148245	100,0	29135	19,7	113354	76,5	5756	3,9
ARAD	248323	100,0	44945	18,1	191761	77,2	11617	4,7
ARGES	262718	100,0	47209	18,0	205200	78,1	10309	3,9
BACAU	241187	100,0	45930	19,0	182759	75,8	12498	5,2
BIHOR	307579	100,0	56408	18,3	235075	76,4	16096	5,2
BISTRITA-NASAUD	126663	100,0	22451	17,7	97312	76,8	6900	5,4
BOTOSANI	99581	100,0	22519	22,6	70810	71,1	6252	6,3
BRASOV	434980	100,0	57733	13,3	364023	83,7	13224	3,0
BRAILA	145817	100,0	25184	17,3	116183	79,7	4450	3,1
BUZAU	188871	100,0	33505	17,7	143883	76,2	11483	6,1
CARAS-SEVERIN	130437	100,0	22415	17,2	99286	76,1	8736	6,7
CALARASI	94599	100,0	18412	19,5	71092	75,2	5095	5,4
CLUJ	476276	100,0	85643	18,0	373079	78,3	17554	3,7
CONSTANTA	464206	100,0	76800	16,5	359528	77,5	27878	6,0
COVASNA	94754	100,0	15700	16,6	74167	78,3	4887	5,2
DAMBOVITA	155393	100,0	34099	21,9	107105	68,9	14189	9,1
DOLJ	290560	100,0	48040	16,5	228208	78,5	14312	4,9
GALATI	282419	100,0	43516	15,4	224205	79,4	14698	5,2
GIURGIU	85075	100,0	15103	17,8	64672	76,0	5300	6,2
GORJ	164224	100,0	21737	13,2	135586	82,6	6901	4,2
HARGHITA	154473	100,0	28450	18,4	120445	78,0	5578	3,6
HUNEDOARA	220187	100,0	37235	16,9	169085	76,8	13867	6,3
IALOMITA	103341	100,0	17111	16,6	79915	77,3	6315	6,1
IASI	353735	100,0	58631	16,6	281549	79,6	13555	3,8
MARAMURES	218728	100,0	46590	21,3	160595	73,4	11543	5,3
MEHEDINTI	117152	100,0	20458	17,5	88427	75,5	8267	7,1
MURES	307658	100,0	46233	15,0	246180	80,0	15245	5,0
NEAMT	238953	100,0	39926	16,7	183815	76,9	15212	6,4
OLT	131932	100,0	25650	19,4	96732	73,3	9550	7,2
PRAHOVA	365327	100,0	61222	16,8	287125	78,6	16980	4,6
SALAJ	91115	100,0	18157	19,9	67415	74,0	5543	6,1
SATU MARE	169239	100,0	31271	18,5	127000	75,0	10968	6,5
SIBIU	233858	100,0	35849	15,3	188402	80,6	9607	4,1
SUCEAVA	260476	100,0	46214	17,7	196469	75,4	17793	6,8
TELEORMAN	116161	100,0	20615	17,7	90502	77,9	5044	4,3
TIMIS	365413	100,0	65176	17,8	282278	77,2	17959	4,9
TULCEA	115653	100,0	18732	16,2	91152	78,8	5769	5,0
VASLUI	129036	100,0	22994	17,8	97068	75,2	8974	7,0
VALCEA	161409	100,0	29928	18,5	121986	75,6	9495	5,9
VRANCEA	130255	100,0	22436	17,2	102748	78,9	5071	3,9
MUN. BUCURESTI	2185320	100,0	347083	15,9	1717386	78,6	120851	5,5
ILFOV	163502	100,0	32292	19,8	124026	75,9	7184	4,4

Table no.3

Number and structure of incorporations in the trade registers during December 1990- November 2008

Period (year, month)	Registered companies		Percentage	
	No.	%	%	
0	1	2	3	
Total, 31 October 2008, out of which	1838737	100,00		
Year 1990	81	0,00		
Year 1991	95840	5,21		
Year 1992	137456	7,48		
Year 1993	117078	6,37		
Year 1994	137445	7,47		
Year 1995	65479	3,56		
Year 1996	62089	3,38		
Year 1997	55663	3,03		
Year 1998	63878	3,47		
Year 1999	57197	3,11		
Year 2000	57291	3,12		
Year 2001	61265	3,33		
Year 2002	84780	4,61		
Year 2003	123582	6,72		
Year 2004	144284	7,85		
Year 2005	159464	8,67		
Year 2006	135371	7,36		
Year 2007	144728	7,87		
Year 2008 (I - XII) out of which :	135766			94,3
January	9833			7,2
February	15237			10,5
March	15253			10,5
April	13379			9,2
May	12489			8,6
June	11898			8,2
July	12772			8,8
August	10557			7,3
September	11725			8,10
October	12459			8,61
November	10164			7,02

Diagram no.1

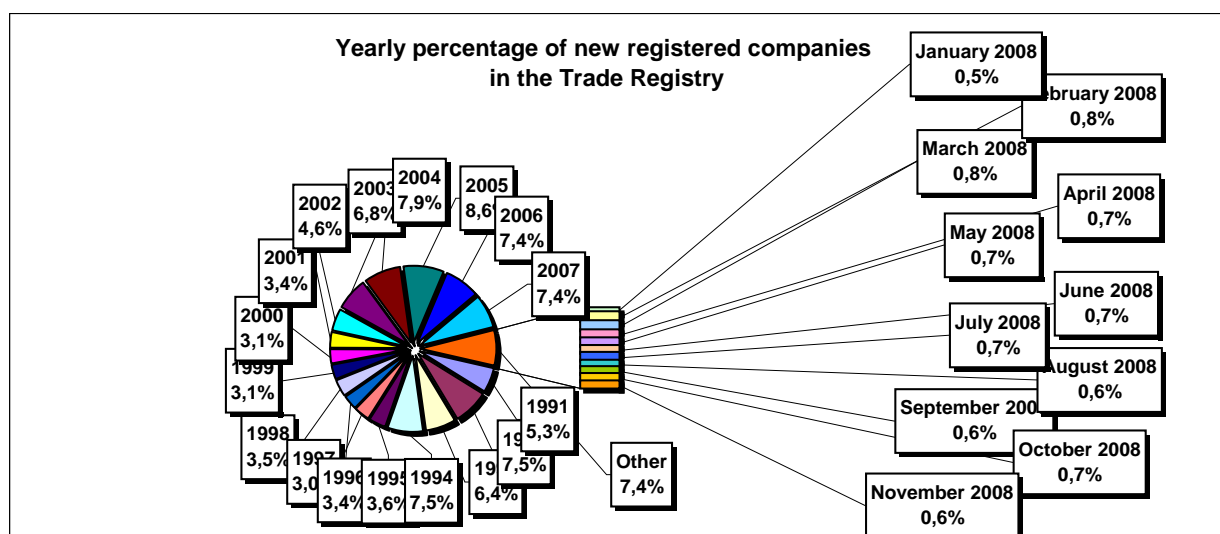


Table no. 4

**Number of incorporations in the trade registers by counties and capital sources during
December 1990 - November 2008**

Counties	Total		out of which:						Ranking by: *	
			Private capital				State majority capital			Mixed capital (state+private)
			out of which:				out of which:			
			PF	Companies	SC	APJ	RA	Companies		Companies
No.	%	No.	No.	No.	No.	No.	No.	No.		
0	1	2	3	4	5	6	6	7	8	9
Total ROMÂNIA	1838737	100,0	480046	1338860	2034	5448	1352	2379	8618	X
ALBA	29135	1,6	10120	18580	36	144	38	47	170	25
ARAD	44946	2,4	16903	27424	59	157	27	41	335	15
ARGES	47209	2,6	15009	31771	48	170	29	30	152	10
BACAU	45930	2,5	15283	30036	149	159	35	42	226	14
BIHOR	56409	3,1	14018	41770	63	148	39	62	309	8
BISTRITA-NASAUD	22451	1,2	7792	14358	46	98	19	29	109	31
BOTOSANI	22519	1,2	10420	11618	40	128	21	173	119	30
BRASOV	57733	3,1	12587	44665	58	117	47	87	172	7
BRAILA	25184	1,4	6649	18157	42	96	28	45	167	28
BUZAU	33505	1,8	9882	23233	46	143	28	42	131	21
CARAS-SEVERIN	22415	1,2	7669	14363	41	105	35	65	137	33
CALARASI	18412	1,0	5467	12647	22	86	18	77	95	38
CLUJ	85643	4,7	22146	62928	62	151	52	41	263	2
CONSTANTA	76800	4,2	15100	60765	87	203	51	51	543	3
COVASNA	15700	0,9	5587	9838	41	69	24	32	109	41
DAMBOVITA	34099	1,9	15192	18482	32	136	29	75	153	20
DOLJ	48039	2,6	10125	37409	39	165	40	58	203	9
GALATI	43516	2,4	9301	33821	35	135	30	51	143	16
GIURGIU	15103	0,8	3600	11167	15	80	22	109	110	42
GORJ	21737	1,2	5326	15968	26	184	50	83	100	34
HARGHITA	28450	1,5	11722	16278	64	90	23	43	230	26
HUNEDOARA	37235	2,0	9803	26901	33	82	40	92	284	18
IALOMITA	17111	0,9	6458	10400	27	74	15	46	91	40
IASI	58631	3,2	16728	41203	87	164	34	71	344	6
MARAMURES	46590	2,5	18344	27879	43	124	37	40	123	11
MEHEDINTI	20458	1,1	6685	13526	19	84	19	27	98	36
MURES	46233	2,5	17149	28628	68	156	30	34	168	12
NEAMT	39926	2,2	14629	24842	66	164	29	30	166	17
OLT	25650	1,4	9873	15375	27	162	26	64	123	27
PRAHOVA	61222	3,3	18928	41656	67	177	50	72	272	5
SALAJ	18157	1,0	7094	10803	41	108	19	28	64	39
SATU MARE	31271	1,7	10422	20525	41	88	19	42	134	23
SIBIU	35849	1,9	9099	26293	37	120	34	108	158	19
SUCEAVA	46214	2,5	21709	23914	73	203	30	64	221	13
TELEORMAN	20615	1,1	7079	13103	33	152	21	45	182	35
TIMIS	65176	3,5	10825	53686	69	141	38	69	348	4
TULCEA	18732	1,0	6591	11767	36	66	18	42	212	37
VASLUI	22994	1,3	10908	11762	22	109	16	41	136	29
VALCEA	29928	1,6	11717	17786	64	170	40	37	114	24
VRANCEA	22436	1,2	6739	15397	35	108	16	27	114	32
MUN. BUCURESTI	347082	18,9	25456	320085	64	138	115	104	1120	1
ILFOV	32292	1,8	3912	28051	31	94	21	13	170	22

*) The total number of incorporations (col 1)

Table no. 5

**Number of incorporations in the trade registers by counties and business categories
during December 1990 – November 2008**

County	Total		out of which:							
			PF	companies: 1349857				RA	SC	APJ
	SNC	SCS		SRL	SA					
	No.	%	No.	No.	No.	No.	No.	No.	No.	
0	1	2	3	4	5	6	7	8	9	10
Total ROMÂNIA	1838737	100,0	480046	32673	1597	1282250	33330	1352	2034	5448
ALBA	29135	1,6	10120	890	11	17324	572	38	36	144
ARAD	44945	2,4	16903	54	12	27041	691	27	59	157
ARGES	47209	2,6	15009	107	15	30995	836	29	48	170
BACAU	45930	2,5	15283	1299	4	28262	738	35	149	159
BIHOR	56408	3,1	14018	126	47	41047	920	39	63	148
BISTRITA-NASAUD	22451	1,2	7792	146	21	13908	421	19	46	98
BOTOSANI	22519	1,2	10420	468	1	10983	458	21	40	128
BRASOV	57733	3,1	12587	239	20	43785	880	47	58	117
BRAILA	25184	1,4	6649	376	12	17455	526	28	42	96
BUZAU	33505	1,8	9882	3747	46	19024	589	28	46	143
CARAS-SEVERIN	22415	1,2	7669	117	9	13966	473	35	41	105
CALARASI	18412	1,0	5467	609	3	11847	360	18	22	86
CLUJ	85643	4,7	22146	2112	21	59770	1329	52	62	151
CONSTANTA	76800	4,2	15100	311	23	59512	1513	51	87	203
COVASNA	15700	0,9	5587	148	4	9525	302	24	41	69
DAMBOVITA	34099	1,9	15192	60	8	18145	497	29	32	136
DOLJ	48040	2,6	10125	1560	8	35202	901	40	39	165
GALATI	43516	2,4	9301	1574	6	31576	859	30	35	135
GIURGIU	15103	0,8	3600	35	8	11013	330	22	15	80
GORJ	21737	1,2	5326	29	1	15620	501	50	26	184
HARGHITA	28450	1,5	11722	62	7	15988	494	23	64	90
HUNEDOARA	37235	2,0	9803	1166	98	25329	684	40	33	82
IALOMITA	17111	0,9	6458	268	12	9903	354	15	27	74
IASI	58631	3,2	16728	507	111	39974	1024	34	87	164
MARAMURES	46590	2,5	18344	1927	23	25488	603	37	43	124
MEHEDINTI	20458	1,1	6685	427	3	12883	338	19	19	84
MURES	46233	2,5	17149	37	34	28079	680	30	68	156
NEAMT	39926	2,2	14629	3293	30	21034	681	29	66	164
OLT	25650	1,4	9873	1611	1	13450	500	26	27	162
PRAHOVA	61222	3,3	18928	3122	15	37942	921	50	67	177
SALAJ	18157	1,0	7094	600	4	9992	299	19	41	108
SATU MARE	31271	1,7	10422	283	9	19928	480	19	41	88
SIBIU	35849	1,9	9099	778	49	25062	670	34	37	120
SUCEAVA	46214	2,5	21709	438	8	23156	597	30	73	203
TELEORMAN	20615	1,1	7079	272	399	12231	428	21	33	152
TIMIS	65176	3,5	10825	615	30	52182	1276	38	69	141
TULCEA	18732	1,0	6591	1363	114	10060	484	18	36	66
VASLUI	22994	1,3	10908	90	13	11414	422	16	22	109
VALCEA	29928	1,6	11717	364	6	17066	501	40	64	170
VRANCEA	22436	1,2	6739	356	10	14710	462	16	35	108
MUN. BUCURESTI	347083	18,9	25456	1038	309	312865	7097	115	64	138
ILFOV	32292	1,8	3912	49	32	27514	639	21	31	94

Table no. 6

**Operations performed in the trade registers by counties and categories of registration
in the month of November 2008**

County	Total of operations carried on		out of which:					
			New incorporations		Changes in statutory documents		Strike off companies	
	No.	%	No.	%	No.	%	No.	%
0	1	2	3	4	5	6	9	10
Total ROMÂNIA	151287	100,0	10164	6,7	136612	90,3	4511	3,0
ALBA	9868	100,0	179	1,8	9634	97,6	55	0,6
ARAD	2996	100,0	256	8,5	2682	89,5	58	1,9
ARGES	2705	100,0	244	9,0	2413	89,2	48	1,8
BACAU	2464	100,0	219	8,9	2185	88,7	60	2,4
BIHOR	2176	100,0	343	15,8	1749	80,4	84	3,9
BISTRITA-NASAUD	1171	100,0	118	10,1	1021	87,2	32	2,7
BOTOSANI	946	100,0	96	10,1	800	84,6	50	5,3
BRASOV	3768	100,0	326	8,7	3346	88,8	96	2,5
BRAILA	1830	100,0	146	8,0	1512	82,6	172	9,4
BUZAU	1711	100,0	175	10,2	1467	85,7	69	4,0
CARAS-SEVERIN	1621	100,0	99	6,1	1420	87,6	102	6,3
CALARASI	4828	100,0	118	2,4	4643	96,2	67	1,4
CLUJ	7855	100,0	539	6,9	6829	86,9	487	6,2
CONSTANTA	6857	100,0	378	5,5	5948	86,7	531	7,7
COVASNA	860	100,0	59	6,9	771	89,7	30	3,5
DAMBOVITA	1411	100,0	223	15,8	1078	76,4	110	7,8
DOLJ	3459	100,0	232	6,7	3056	88,3	171	4,9
GALATI	2411	100,0	233	9,7	2087	86,6	91	3,8
GIURGIU	1501	100,0	100	6,7	1386	92,3	15	1,0
GORJ	1779	100,0	107	6,0	1640	92,2	32	1,8
HARGHITA	1417	100,0	148	10,4	1212	85,5	57	4,0
HUNEDOARA	13962	100,0	209	1,5	13725	98,3	28	0,2
IALOMITA	1202	100,0	98	8,2	1074	89,4	30	2,5
IASI	2989	100,0	434	14,5	2488	83,2	67	2,2
MARAMURES	2317	100,0	202	8,7	2059	88,9	56	2,4
MEHEDINTI	4793	100,0	97	2,0	4675	97,5	21	0,4
MURES	3176	100,0	220	6,9	2870	90,4	86	2,7
NEAMT	3784	100,0	173	4,6	3450	91,2	161	4,3
OLT	1648	100,0	146	8,9	1466	89,0	36	2,2
PRAHOVA	4115	100,0	382	9,3	3565	86,6	168	4,1
SALAJ	1461	100,0	110	7,5	1185	81,1	166	11,4
SATU MARE	1787	100,0	173	9,7	1583	88,6	31	1,7
SIBIU	1992	100,0	196	9,8	1574	79,0	222	11,1
SUCEAVA	2085	100,0	185	8,9	1817	87,1	83	4,0
TELEORMAN	837	100,0	120	14,3	685	81,8	32	3,8
TIMIS	3625	100,0	357	9,8	3208	88,5	60	1,7
TULCEA	1244	100,0	77	6,2	887	71,3	280	22,5
VASLUI	5862	100,0	105	1,8	5740	97,9	17	0,3
VALCEA	1348	100,0	125	9,3	1161	86,1	62	4,6
VRANCEA	1531	100,0	98	6,4	1364	89,1	69	4,5
MUN. BUCURESTI	25310	100,0	1981	7,8	22937	90,6	392	1,5
ILFOV	2585	100,0	338	13,1	2220	85,9	27	1,0

*) by effect of implementation of Law no. 314/2001, art.1 and art. 6

Table no.7

Number of incorporations in the trade registers by counties and capital sources in the month of November 2008

County	Total		out of which:						Ranking by: *	
			Private capital				State majority capital			Mixed capital (state+private)
			out of which:				out of which:			
			PF	Companies	SC	APJ	RA	Companies		Companies
No.	%	No.	No.	No.		No.	No.	No.		
0	1	2	3	4	5	6	7	8	9	
Total ROMÂNIA	10164	100,0	3119	7034	4	6		1	X	
ALBA	179	1,8	65	114					20	
ARAD	256	2,5	101	155					9	
ARGES	244	2,4	67	177					10	
BACAU	219	2,2	87	132					15	
BIHOR	344	3,4	122	221				1	7	
BISTRITA-NASAUD	118	1,2	42	76					29	
BOTOSANI	96	0,9	41	55					39	
BRASOV	326	3,2	103	223					8	
BRAILA	146	1,4	51	95					25	
BUZAU	175	1,7	46	129					21	
CARAS-SEVERIN	99	1,0	31	67		1			35	
CALARASI	118	1,2	41	77					30	
CLUJ	539	5,3	170	368		1			2	
CONSTANTA	378	3,7	75	299	4				5	
COVASNA	59	0,6	30	29					41	
DAMBOVITA	223	2,2	116	107					13	
DOLJ	231	2,3	66	165					12	
GALATI	233	2,3	104	129					11	
GIURGIU	100	1,0	29	71					34	
GORJ	107	1,1	32	75					32	
HARGHITA	148	1,5	70	78					24	
HUNEDOARA	209	2,1	77	132					16	
IALOMITA	98	1,0	29	69					36	
IASI	434	4,3	149	285					3	
MARAMURES	202	2,0	77	125					17	
MEHEDINTI	97	1,0	50	46		1			38	
MURES	220	2,2	84	136					14	
NEAMT	173	1,7	44	129					22	
OLT	146	1,4	39	107					26	
PRAHOVA	382	3,8	121	261					4	
SALAJ	110	1,1	36	73		1			31	
SATU MARE	173	1,7	63	110					23	
SIBIU	196	1,9	72	124					18	
SUCEAVA	185	1,8	63	122					19	
TELEORMAN	120	1,2	41	79					28	
TIMIS	357	3,5	78	279					6	
TULCEA	77	0,8	18	59					40	
VASLUI	105	1,0	47	58					33	
VALCEA	125	1,2	47	78					27	
VRANCEA	98	1,0	28	69		1			37	
MUN. BUCURESTI	1981	19,5	424	1557					1	
ILFOV	338	3,3	43	294		1			42	

*) The total number of incorporations (col 1)

*** Less than 0,01%

Table no.8

Number of incorporations in the trade registers by counties and business categories in the month of November 2008

County	Total		out of which:						RA	SC	APJ
			PF	companies: 7035							
	SNC	SCS		SRL	SA						
	No.	%	No.	No.	No.	No.	No.	No.			
0	1	2	3	4	5	6	7	8	9		
Total ROMÂNIA	10164	100,0	3119	2	1	6987	45		4	6	
ALBA	179	1,8	65			114					
ARAD	256	2,5	101			155					
ARGES	244	2,4	67			177					
BACAU	219	2,2	87			132					
BIHOR	343	3,4	122			220	1				
BISTRITA-NASAUD	118	1,2	42			76					
BOTOSANI	96	0,9	41			55					
BRASOV	326	3,2	103			222	1				
BRAILA	146	1,4	51			94	1				
BUZAU	175	1,7	46			128	1				
CARAS-SEVERIN	99	1,0	31			67				1	
CALARASI	118	1,2	41			77					
CLUJ	539	5,3	170			364	4			1	
CONSTANTA	378	3,7	75			296	3		4		
COVASNA	59	0,6	30			29					
DAMBOVITA	223	2,2	116			107					
DOLJ	232	2,3	66			165	1				
GALATI	233	2,3	104			129					
GIURGIU	100	1,0	29			70	1				
GORJ	107	1,1	32			75					
HARGHITA	148	1,5	70			78					
HUNEDOARA	209	2,1	77			132					
IALOMITA	98	1,0	29			69					
IASI	434	4,3	149			284	1				
MARAMURES	202	2,0	77			125					
MEHEDINTI	97	1,0	50			46				1	
MURES	220	2,2	84			136					
NEAMT	173	1,7	44			127	2				
OLT	146	1,4	39			106	1				
PRAHOVA	382	3,8	121			259	2				
SALAJ	110	1,1	36			72	1			1	
SATU MARE	173	1,7	63			110					
SIBIU	196	1,9	72	1		123					
SUCEAVA	185	1,8	63			119	3				
TELEORMAN	120	1,2	41			79					
TIMIS	357	3,5	78			277	2				
TULCEA	77	0,8	18			58	1				
VASLUI	105	1,0	47			58					
VALCEA	125	1,2	47			77	1				
VRANCEA	98	1,0	28			68	1			1	
MUN. BUCURESTI	1981	19,5	424	1	1	1541	14				
ILFOV	338	3,3	43			291	3			1	

Table no. 9

Number of incorporations in the trade registers by domains of activity and business categories in the month of November 2008

CAEN segment	Field of activity	Total		out of which:								
				PF	companies: 7035				RA	SC	APJ	
		SNC	SCS		SRL	SA						
		No.	%	No.	No.	No.	No.	No.	No.	No.		
0	1	2	3	4	5	6	7	8	9	10	11	
	Total ROMÂNIA	10164	100,0	3119	2	1	6987	45			4	6
1	Agriculture, hunting and related service activities	296	2,9	182			112				2	
2	Forestry and logging	63	0,6	7			56					
3	Fishing and aquaculture	30	0,3	23			7					
5	Mining of hard and brown coal											
6	Extraction of crude petroleum and natural gas											
7	Mining of metal ores											
8	Other mining and quarrying	12	0,1				12					
9	Mining support service activities	2	0,0				2					
10	Manufacture of food products	64	0,6	21			42	1				
11	Manufacture of beverages	36	0,4	32			4					
12	Manufacture of tobacco products											
13	Manufacture of textiles	17	0,2	2			15					
14	Manufacture of wearing apparel	49	0,5	13			35	1				
15	Tanning and dressing of leather; manufacture of luggage, handbags, saddlery, harness and footwear; dressing and dyeing of fur	12	0,1	1			11					
16	Manufacture of wood and of products of wood and cork, except furniture; manufacture of articles of straw and plaiting materials	49	0,5	18			31					
17	Manufacture of paper and paper products	4	0,0	1			3					
18	Printing and reproduction of recorded media	28	0,3	5			23					
19	Manufacture of coke and refined petroleum products	1	0,0				1					
20	Manufacture of chemicals and chemical products	9	0,1				9					
21	Manufacture of basic pharmaceutical products and pharmaceutical preparations	1	0,0				1					
22	Manufacture of rubber and plastic products	15	0,1				15					
23	Manufacture of other non-metallic mineral products	28	0,3	3			24	1				
24	Manufacture of basic metals	2	0,0				2					
25	Manufacture of fabricated metal products, except machinery and equipment	89	0,9	19			70					
26	Manufacture of computer, electronic and optical products	7	0,1	1			6					
27	Manufacture of electrical equipment	1	0,0				1					
28	Manufacture of machinery and equipment n.e.c.	11	0,1	1			10					
29	Manufacture of motor vehicles, trailers and semi-trailers	2	0,0				2					
30	Manufacture of other transport equipment	12	0,1			1	11					
31	Manufacture of furniture	49	0,5	6			43					
32	Other manufacturing	29	0,3	11			18					
33	Repair and installation of machinery and equipment	27	0,3	7			19					1
35	Electricity, gas, steam and air conditioning supply	29	0,3				28	1				
36	Water collection, treatment and supply											
37	Sewerage	6	0,1	1			5					
38	Waste collection, treatment and disposal activities; materials recovery	28	0,3	1			27					
39	Remediation activities and other waste management services											
41	Construction of buildings	777	7,6	52			723	2				
42	Civil engineering	53	0,5	2			51					
43	Specialised construction activities	526	5,2	122			403	1				
45	Wholesale and retail trade and repair of motor vehicles and motorcycles	270	2,7	39			231					
46	Wholesale trade, except of motor vehicles and motorcycles	1057	10,4	207			850					
47	Retail trade, except of motor vehicles and motorcycles	1759	17,3	590			1165	3			1	
49	Land transport and transport via pipelines	551	5,4	198			353					
50	Water transport	5	0,0	1			4					

Table no. 10

Number of incorporated trading companies and the value of the subscribed share capital, by counties, in the month of November 2008

County	Total registered companies		Subscribed capital		Average subscribed capital on company
	No.	%	thousand Lei	%	thousand Lei
0	1	2	3	4	5
Total ROMÂNIA	7035	100,0	494509,6	100,0	70,7
ALBA	114	1,6	269,1	0,1	2,4
ARAD	155	2,2	32490,9	6,6	209,6
ARGES	177	2,5	398,4	0,1	2,3
BACAU	132	1,9	109,1	0,0	0,8
BIHOR	221	3,1	612,2	0,1	2,8
BISTRITA-NASAUD	76	1,1	23,5	***	0,3
BOTOSANI	55	0,8	115,9	0,0	2,1
BRASOV	223	3,2	2278,1	0,5	10,3
BRAILA	95	1,4	26,6	***	0,3
BUZAU	129	1,8	12231,7	2,5	94,8
CARAS-SEVERIN	67	1,0	30,1	***	0,4
CALARASI	77	1,1	181,0	0,0	2,4
CLUJ	368	5,2	2744,8	0,6	7,5
CONSTANTA	299	4,3	229,0	0,0	0,8
COVASNA	29	0,4	61,7	0,0	2,1
DAMBOVITA	107	1,5	70,9	0,0	0,7
DOLJ	166	2,4	40,9	***	0,2
GALATI	129	1,8	59,0	0,0	0,5
GIURGIU	71	1,0	11225,7	2,3	160,4
GORJ	75	1,1	181,1	0,0	2,4
HARGHITA	78	1,1	123,6	0,0	1,6
HUNEDOARA	132	1,9	1144,0	0,2	8,7
IALOMITA	69	1,0	454,8	0,1	6,6
IASI	285	4,1	215,3	0,0	0,8
MARAMURES	125	1,8	77,4	0,0	0,6
MEHEDINTI	46	0,7	10,9	***	0,2
MURES	136	1,9	191,5	0,0	1,4
NEAMT	129	1,8	671,1	0,1	5,3
OLT	107	1,5	86,3	0,0	0,8
PRAHOVA	261	3,7	4061,9	0,8	15,6
SALAJ	73	1,0	1211,7	0,2	16,6
SATU MARE	110	1,6	184,8	0,0	1,7
SIBIU	124	1,8	759,1	0,2	6,1
SUCEAVA	122	1,7	424,3	0,1	3,5
TELEORMAN	79	1,1	37,6	***	0,5
TIMIS	279	4,0	554,6	0,1	2,0
TULCEA	59	0,8	169,8	0,0	3,0
VASLUI	58	0,8	45,1	***	0,8
VALCEA	78	1,1	63,6	0,0	0,8
VRANCEA	69	1,0	62854,5	12,7	924,3
MUN. BUCURESTI	1557	22,1	350480,2	70,9	227,4
ILFOV	294	4,2	7308,0	1,5	24,9

Note: The average does not include filials because according to the

*** Less than 0,01%

Table no. 11

Number of incorporated trading companies and the value of the subscribed share capital by legal forms, in the month of November 2008

Company type	Total registered companies		Subscribed capital		Average subscribed capital on company
	No.	%	thousand Lei	%	thousand Lei
0	1	2	3	4	5
Total ROMÂNIA	7035	100,0	494509,6	100,0	70,7
SNC	2	0,0	1,0	***	1,0
SCS	1	0,0	0,2	***	0,2
SA	45	0,6	340425,4	68,8	17021,3
SRL	6987	99,3	154083,0	31,2	22,1
SCA					

Note: The average does not include filials because according to the Law no.31/1990 they are not juridical persons

*** Less than 0,01%

Diagram no.5

