



MINISTRY OF JUSTICE

THE NATIONAL TRADE REGISTER OFFICE

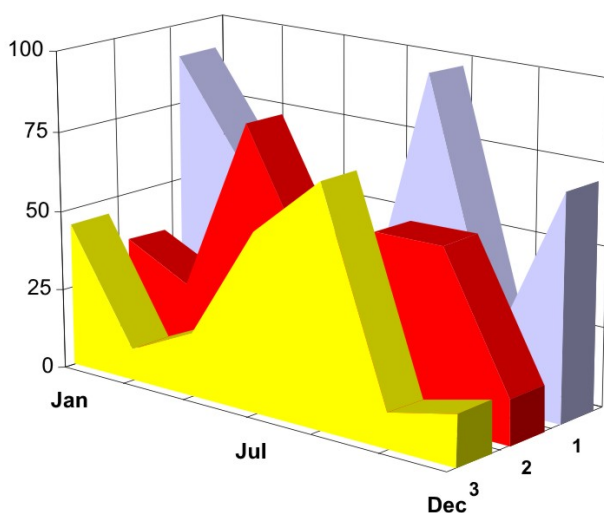
București, Bd. Unirii nr. 74, Bl. J3b, tronson II+III, sector 3; Telefon: +40 21 316.08.04, 316.08.10; Fax: +40 21 316.08.03; Cod poștal: 030837  
Website: [www.onrc.ro](http://www.onrc.ro); E-mail: [onrc@onrc.ro](mailto:onrc@onrc.ro); Cod identificare Fiscală: 14942091

# OPERATIONS IN THE CENTRAL TRADE REGISTER

## STATISTIC SYNTHESIS

OF

**RECORDS IN THE CENTRAL TRADE REGISTER  
- the 31<sup>th</sup> of October 2008 - provisional data -**



- ISSUE No. 203 -

**MINISTRY OF JUSTICE  
THE NATIONAL TRADE REGISTER OFFICE**

---

- Operations such as incorporation of trading companies, submission of changes, and strike-off are carried out based on Law No.26/1990, as republished, Law No.31/1990, as republished and on the Methodological Norms no. P/608/1998.
  
- This work reflects the evolution of the operations with the Trade Register Office attached to Bucharest Law Court and the Trade Register Offices attached to County Law Courts.
  
- The data contained in the Central Trade Register refer to operations for which law sets out the obligation of being registered in the trade registers kept by the 42 trade register offices attached to law courts.

<ul style="list-style-type: none"><li>• <i>The content of this publication shall not be reproduced, partly or entirely, in original or modified form, and shall not be stored in a recovery system and shall not be transmitted in any form or by any means without prior written authorization of the Ministry of Justice – The National Trade Register Office.</i></li><li>• <i>The content of this publication October be used in articles, studies, books, as supporting or explanatory data only by clearly and accurately indicating the source.</i></li></ul>
--

# CONTENTS

Page

<b>1</b>	<b>Definitions</b>	<b>1</b>
<b>2.1</b>	<b>Data related to the period December 1990 –October 2008</b>	<b>3</b>
<hr/>		
	<b>Table no. 1 – Operations performed in the trade registers by categories of registration during December 1990 –October 2008, total by country and by counties, shares of counties in the total by country</b>	<b>3</b>
	<b>Table no. 2 – Operations performed in the trade registers by categories of registration during December 1990 –October 2008, total by country and counties, share of categories of operations in the total of each county</b>	<b>4</b>
	<b>Table no. 3 – Number and structure of incorporations in the trade registers during December 1990-October 2008</b>	<b>5</b>
	<b>Chart no. 1 – Structure by years of incorporations in the trade register</b>	
	<b>Table no. 4 – Number of incorporations in the trade registers by counties and capital sources during December 1990 - October 2008</b>	<b>6</b>
	<b>Table no. 5 – Number of incorporations in the trade registers by counties and business categories during December 1990 –October 2008</b>	<b>7</b>
<hr/>		
<b>2.2</b>	<b>Data related to October 2008</b>	<b>8</b>
<hr/>		
	<b>Table no. 6 – Operations performed in the trade registers by counties and categories of registrations in the month of October 2008</b>	<b>8</b>
	<b>Table no. 7 – Number of incorporations in the trade registers by counties and capital sources in the month of October 2008</b>	<b>9</b>
	<b>Table no. 8 – Number of incorporations in the trade registers by counties and business categories in the month of October 2008</b>	<b>10</b>
	<b>Table no. 9 –Number of incorporations in the trade registers by domains of activity and business categories in the month of October 2008</b>	<b>11-12</b>
	<b>Table no. 10 – Number of incorporated trading companies and the value of subscribed share capital, by counties, in the month of October 2008</b>	<b>13</b>
	<b>Table no. 11– Number of incorporated trading companies and the value of subscribed share capital by legal forms, in the month of October 2008</b>	<b>14</b>
	<b>Chart no. 5 – Average value of subscribed share capital by types of trading companies in the month of October 2008</b>	<b>14</b>

## Definitions

The Trade Register Office was established based on Law No. 26/1990, as republished and subsequently amended and supplemented, operates as an active institution since December 1990 and is twofold structured:

- at national level, represented by the National Trade Register Office organized under the authority of the Ministry of Justice
- at local level, represented by the 42 Trade Register Offices attached to Law Courts, organized under the subordination of the National Trade Register Office

Categories of persons liable to registration in the trade register:

- natural persons: authorized natural persons, individual enterprises and family enterprises currently carrying on trading activities;
  - legal persons represented by: Trading Companies, National Societies and Companies, National R&D Institutes, Autonomous Administrations, Co-operative Societies, Agricultural Co-operatives, Co-operative Organizations, Economic Interest Groupings, European Economic Interest Groupings, European Societies, European Co-operative Societies, branches of trading companies with legal establishment, operation and incorporation regime of trading company legal form under which they were incorporated.
- **Terms used in tables and charts**
- **Number of companies**, depending on the table, represents the number of trading companies incorporated during the reference period, the number of trading companies struck-off from the trade register. The following forms of organization are included: limited liability companies, joint-stock companies, limited partnerships by share, limited partnerships, general partnerships, and branches thereof.
  - **Value of subscribed share capital:**
    - **total, expressed in national currency:** the share capital value resulted by adding up the subscribed values (in cash and in kind) in national currency (lei)

➤ **Regions of economic development:**

<i>North-East:</i>	Suceava, Botoșani, Neamț, Iași, Bacău, Vaslui.
<i>South-East:</i>	Vrancea, Galați, Buzău, Brăila, Tulcea, Constanța.
<i>South-Muntenia:</i>	Argeș, Dâmbovița, Prahova, Teleorman, Giurgiu, Călărași, Ialomița.
<i>South-West Oltenia:</i>	Gorj, Vâlcea, Dolj, Mehedinți, Olt.
<i>West:</i>	Arad, Caraș-Severin, Hunedoara, Timiș.
<i>North-West:</i>	Bihor, Bistrița, Cluj, Satu Mare, Sălaj, Maramureș.
<i>Center:</i>	Alba, Brașov, Covasna, Harghita, Mureș, Sibiu.
<i>Bucharest-Ilfov:</i>	București, Ilfov.

NACE Code – The classification of economic activities in the national economy was approved by GO No. 656/1997, amended by Order No 601/2002 and Order no. 337/2007 of the President of the National Institute of Statistics, and complies with the international classification used in statistic reports and official documents. The activities are ranked by the harmonization principle, by sections, divisions, groups and classes.

### Abbreviations

- **PF** - Natural Person; the following forms of organization are included in this category: natural persons and family associations registered until 25.04.2008, authorized natural persons, individual enterprises and family enterprises.
- **SNC** - General Partnership
- **SCS** - Limited Partnership
- **SCA** - Limited Partnership by Share
- **SA** - Joint-Stock Company
- **SRL** - Limited Liability Company
- **RA** - Autonomous Administration
- **APJ** - Other legal persons having the obligation to register in the trade register: National R&D Institutes, Economic Interest Groupings, European Economic Interest Groupings, European Societies, European Co-operative Societies, Agricultural Co-operatives, Co-operative Organizations.

### Sources of Information:

The integrated IT system of the trade register is designed by The National Trade Register Office in compliance with the provisions of the related legislation in force. The source of information consists of the trade registers organized in computerized system, kept by the trade register offices attached to law courts.

Table no. 1

**Operations performed in the trade registers by categories of registration during  
December 1990 – October 2008, total by country and by counties, share of  
counties in the total by country**

Counties	Total of registered operations		out of which :					
			Registered companies		Changes in statutory documents		Strike off companies	
	No.	%	No.	%	No.	%	No.	%
0	1	2	3	4	5	6	11	12
<b>Total ROMÂNIA</b>	<b>10652574</b>	<b>100,0</b>	<b>1828573</b>	<b>100,0</b>	<b>8270007</b>	<b>100,0</b>	<b>553994</b>	<b>100,0</b>
ALBA	145945	1,4	28956	1,6	111288	1,3	5701	1,0
ARAD	245479	2,3	44689	2,4	189231	2,3	11559	2,1
ARGES	260572	2,4	46965	2,6	203346	2,5	10261	1,9
BACAU	238975	2,2	45711	2,5	180826	2,2	12438	2,2
BIHOR	303217	2,8	56065	3,1	231140	2,8	16012	2,9
BISTRITA-NASAUD	125659	1,2	22333	1,2	96458	1,2	6868	1,2
BOTOSANI	98711	0,9	22423	1,2	70086	0,8	6202	1,1
BRASOV	430823	4,0	57407	3,1	360288	4,4	13128	2,4
BRAILA	144093	1,4	25038	1,4	114777	1,4	4278	0,8
BUZAU	186925	1,8	33330	1,8	142181	1,7	11414	2,1
CARAS-SEVERIN	129176	1,2	22316	1,2	98226	1,2	8634	1,6
CALARASI	93476	0,9	18294	1,0	70154	0,8	5028	0,9
CLUJ	469653	4,4	85104	4,7	367482	4,4	17067	3,1
CONSTANTA	459116	4,3	76422	4,2	355347	4,3	27347	4,9
COVASNA	93957	0,9	15641	0,9	73459	0,9	4857	0,9
DAMBOVITA	154006	1,4	33876	1,9	106051	1,3	14079	2,5
DOLJ	286716	2,7	47808	2,6	224767	2,7	14141	2,6
GALATI	280340	2,6	43283	2,4	222450	2,7	14607	2,6
GIURGIU	84152	0,8	15003	0,8	63864	0,8	5285	1,0
GORJ	162959	1,5	21630	1,2	134460	1,6	6869	1,2
HARGHITA	153084	1,4	28302	1,5	119261	1,4	5521	1,0
HUNEDOARA	217699	2,0	37026	2,0	166834	2,0	13839	2,5
IALOMITA	102602	1,0	17013	0,9	79304	1,0	6285	1,1
IASI	350773	3,3	58197	3,2	279088	3,4	13488	2,4
MARAMURES	216943	2,0	46388	2,5	159068	1,9	11487	2,1
MEHEDINTI	116045	1,1	20361	1,1	87438	1,1	8246	1,5
MURES	304908	2,9	46013	2,5	243736	2,9	15159	2,7
NEAMT	225853	2,1	39753	2,2	171049	2,1	15051	2,7
OLT	130660	1,2	25504	1,4	95642	1,2	9514	1,7
PRAHOVA	361109	3,4	60840	3,3	283457	3,4	16812	3,0
SALAJ	89932	0,8	18047	1,0	66508	0,8	5377	1,0
SATU MARE	167749	1,6	31098	1,7	125714	1,5	10937	2,0
SIBIU	231735	2,2	35653	1,9	186697	2,3	9385	1,7
SUCEAVA	258739	2,4	46029	2,5	195000	2,4	17710	3,2
TELEORMAN	115337	1,1	20495	1,1	89830	1,1	5012	0,9
TIMIS	362080	3,4	64819	3,5	279362	3,4	17899	3,2
TULCEA	113816	1,1	18655	1,0	89672	1,1	5489	1,0
VASLUI	128027	1,2	22889	1,3	96181	1,2	8957	1,6
VALCEA	160123	1,5	29803	1,6	120887	1,5	9433	1,7
VRANCEA	128812	1,2	22338	1,2	101472	1,2	5002	0,9
MUN. BUCURESTI	2161558	20,3	345102	18,9	1695997	20,5	120459	21,7
ILFOV	161040	1,5	31954	1,7	121929	1,5	7157	1,3

Table no. 2

**Operations performed in the trade registers during December 1990 – October 2008, total by country and counties, share of categories of operations in the total of each county**

Counties	Total of registered operations		out of which :					
			Registered companies		Changes in statutory documents		Strike off companies	
	No.	%	No.	%	No.	%	No.	%
0	1	2	3	4	5	6	11	12
<b>Total ROMÂNIA</b>	<b>10652574</b>	<b>100,0</b>	<b>1828573</b>	<b>17,2</b>	<b>8270007</b>	<b>77,6</b>	<b>553994</b>	<b>5,2</b>
ALBA	145945	100,0	28956	19,8	111288	76,3	5701	3,9
ARAD	245479	100,0	44689	18,2	189231	77,1	11559	4,7
ARGES	260572	100,0	46965	18,0	203346	78,0	10261	3,9
BACAU	238975	100,0	45711	19,1	180826	75,7	12438	5,2
BIHOR	303217	100,0	56065	18,5	231140	76,2	16012	5,3
BISTRITA-NASAUD	125659	100,0	22333	17,8	96458	76,8	6868	5,5
BOTOSANI	98711	100,0	22423	22,7	70086	71,0	6202	6,3
BRASOV	430823	100,0	57407	13,3	360288	83,6	13128	3,0
BRAILA	144093	100,0	25038	17,4	114777	79,7	4278	3,0
BUZAU	186925	100,0	33330	17,8	142181	76,1	11414	6,1
CARAS-SEVERIN	129176	100,0	22316	17,3	98226	76,0	8634	6,7
CALARASI	93476	100,0	18294	19,6	70154	75,1	5028	5,4
CLUJ	469653	100,0	85104	18,1	367482	78,2	17067	3,6
CONSTANTA	459116	100,0	76422	16,6	355347	77,4	27347	6,0
COVASNA	93957	100,0	15641	16,6	73459	78,2	4857	5,2
DAMBOVITA	154006	100,0	33876	22,0	106051	68,9	14079	9,1
DOLJ	286716	100,0	47808	16,7	224767	78,4	14141	4,9
GALATI	280340	100,0	43283	15,4	222450	79,4	14607	5,2
GIURGIU	84152	100,0	15003	17,8	63864	75,9	5285	6,3
GORJ	162959	100,0	21630	13,3	134460	82,5	6869	4,2
HARGHITA	153084	100,0	28302	18,5	119261	77,9	5521	3,6
HUNEDOARA	217699	100,0	37026	17,0	166834	76,6	13839	6,4
IALOMITA	102602	100,0	17013	16,6	79304	77,3	6285	6,1
IASI	350773	100,0	58197	16,6	279088	79,6	13488	3,8
MARAMURES	216943	100,0	46388	21,4	159068	73,3	11487	5,3
MEHEDINTI	116045	100,0	20361	17,5	87438	75,3	8246	7,1
MURES	304908	100,0	46013	15,1	243736	79,9	15159	5,0
NEAMT	225853	100,0	39753	17,6	171049	75,7	15051	6,7
OLT	130660	100,0	25504	19,5	95642	73,2	9514	7,3
PRAHOVA	361109	100,0	60840	16,8	283457	78,5	16812	4,7
SALAJ	89932	100,0	18047	20,1	66508	74,0	5377	6,0
SATU MARE	167749	100,0	31098	18,5	125714	74,9	10937	6,5
SIBIU	231735	100,0	35653	15,4	186697	80,6	9385	4,0
SUCEAVA	258739	100,0	46029	17,8	195000	75,4	17710	6,8
TELEORMAN	115337	100,0	20495	17,8	89830	77,9	5012	4,3
TIMIS	362080	100,0	64819	17,9	279362	77,2	17899	4,9
TULCEA	113816	100,0	18655	16,4	89672	78,8	5489	4,8
VASLUI	128027	100,0	22889	17,9	96181	75,1	8957	7,0
VALCEA	160123	100,0	29803	18,6	120887	75,5	9433	5,9
VRANCEA	128812	100,0	22338	17,3	101472	78,8	5002	3,9
MUN. BUCURESTI	2161558	100,0	345102	16,0	1695997	78,5	120459	5,6
ILFOV	161040	100,0	31954	19,8	121929	75,7	7157	4,4

Table no.3

Number and structure of incorporations in the trade registers during December 1990- October 2008

Period (year, month)	Registered companies		Percentage	
	No.		%	%
0	1	2	3	
<b>Total, 31 October 2008, out of which</b>	<b>1828573</b>	<b>100,00</b>		
Year 1990	81	0,00		
Year 1991	95840	5,24		
Year 1992	137456	7,52		
Year 1993	117078	6,40		
Year 1994	137445	7,52		
Year 1995	65479	3,58		
Year 1996	62089	3,40		
Year 1997	55663	3,04		
Year 1998	63878	3,49		
Year 1999	57197	3,13		
Year 2000	57291	3,13		
Year 2001	61265	3,35		
Year 2002	84780	4,64		
Year 2003	123582	6,76		
Year 2004	144284	7,89		
Year 2005	159464	8,72		
Year 2006	135371	7,40		
Year 2007	144728	7,91		
<b>Year 2008 (I - XII) out of which :</b>	<b>125602</b>		<b>87,8</b>	
January	9833		7,8	
February	15237		10,5	
March	15253		10,5	
April	13379		9,2	
May	12489		8,6	
June	11898		8,2	
July	12772		8,8	
August	10557		7,3	
September	11725		8,10	
October	12459		8,61	

Note: Column 2 reveals the annual structure of incorporations; column 3 reveals the structure by months during the current year.

Diagram no.1

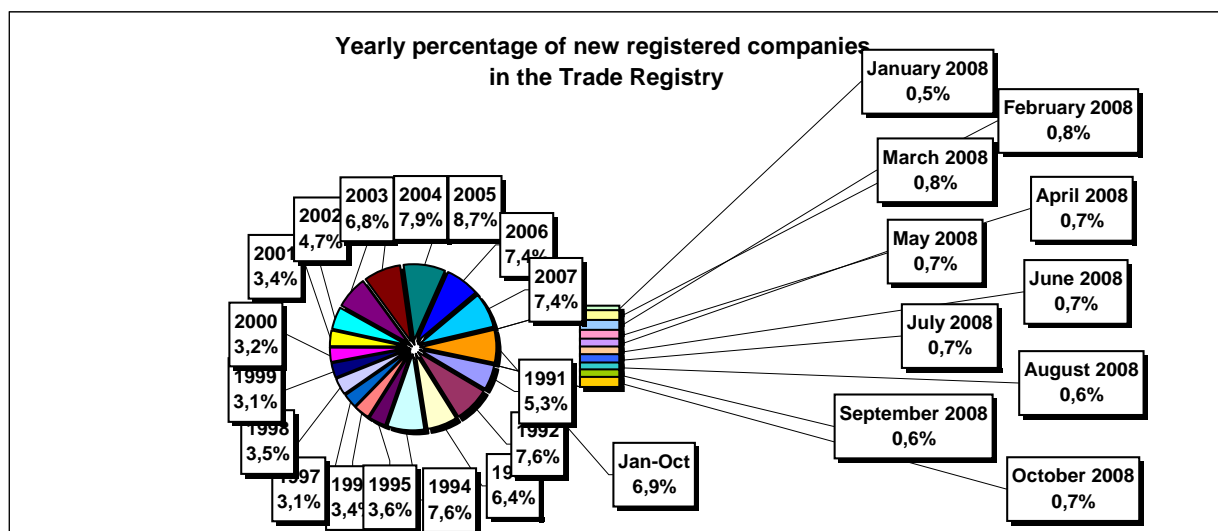


Table no. 4

**Number of incorporations in the trade registers by counties and capital sources during  
December 1990 - October 2008**

Counties	Total		out of which:						Ranking by: *	
			Private capital				State majority capital			Mixed capital (state+private)
			out of which:				out of which:			
			PF	Companies	SC	APJ	RA	Companies		Companies
No.	%	No.	No.	No.	No.	No.	No.			
0	1	2	3	4	5	6	6	7	8	9
<b>Total ROMÂNIA</b>	<b>1828573</b>	<b>100,0</b>	<b>476927</b>	<b>1331826</b>	<b>2030</b>	<b>5442</b>	<b>1352</b>	<b>2379</b>	<b>8617</b>	<b>X</b>
ALBA	28956	1,6	10055	18466	36	144	38	47	170	25
ARAD	44690	2,4	16802	27269	59	157	27	41	335	15
ARGES	46965	2,6	14942	31594	48	170	29	30	152	10
BACAU	45711	2,5	15196	29904	149	159	35	42	226	14
BIHOR	56065	3,1	13896	41549	63	148	39	62	308	8
BISTRITA-NASAUD	22333	1,2	7750	14282	46	98	19	29	109	32
BOTOSANI	22423	1,2	10379	11563	40	128	21	173	119	30
BRASOV	57407	3,1	12484	44442	58	117	47	87	172	7
BRAILA	25038	1,4	6598	18062	42	96	28	45	167	28
BUZAU	33330	1,8	9836	23104	46	143	28	42	131	21
CARAS-SEVERIN	22316	1,2	7638	14296	41	104	35	65	137	33
CALARASI	18294	1,0	5426	12570	22	86	18	77	95	38
CLUJ	85104	4,7	21976	62560	62	150	52	41	263	2
CONSTANTA	76422	4,2	15025	60466	83	203	51	51	543	3
COVASNA	15641	0,9	5557	9809	41	69	24	32	109	41
DAMBOVITA	33876	1,9	15076	18375	32	136	29	75	153	20
DOLJ	47808	2,6	10059	37244	39	165	40	58	203	9
GALATI	43283	2,4	9197	33692	35	135	30	51	143	16
GIURGIU	15003	0,8	3571	11096	15	80	22	109	110	42
GORJ	21630	1,2	5294	15893	26	184	50	83	100	34
HARGHITA	28302	1,5	11652	16200	64	90	23	43	230	26
HUNEDOARA	37026	2,0	9726	26769	33	82	40	92	284	18
IALOMITA	17013	0,9	6429	10331	27	74	15	46	91	40
IASI	58197	3,2	16579	40918	87	164	34	71	344	6
MARAMURES	46388	2,5	18267	27754	43	124	37	40	123	11
MEHEDINTI	20361	1,1	6635	13480	19	83	19	27	98	36
MURES	46013	2,5	17065	28492	68	156	30	34	168	13
NEAMT	39753	2,2	14585	24713	66	164	29	30	166	17
OLT	25504	1,4	9834	15268	27	162	26	64	123	27
PRAHOVA	60840	3,3	18807	41395	67	177	50	72	272	5
SALAJ	18047	1,0	7058	10730	41	107	19	28	64	39
SATU MARE	31098	1,7	10359	20415	41	88	19	42	134	23
SIBIU	35653	1,9	9027	26169	37	120	34	108	158	19
SUCEAVA	46029	2,5	21646	23792	73	203	30	64	221	12
TELEORMAN	20495	1,1	7038	13024	33	152	21	45	182	35
TIMIS	64819	3,5	10747	53407	69	141	38	69	348	4
TULCEA	18655	1,0	6573	11708	36	66	18	42	212	37
VASLUI	22889	1,3	10861	11704	22	109	16	41	136	29
VALCEA	29803	1,6	11670	17708	64	170	40	37	114	24
VRANCEA	22338	1,2	6711	15328	35	107	16	27	114	31
MUN. BUCURESTI	345101	18,9	25032	318528	64	138	115	104	1120	1
ILFOV	31954	1,7	3869	27757	31	93	21	13	170	22

Table no. 5

**Number of incorporations in the trade registers by counties and business categories  
during December 1990 – October 2008**

County	Total		out of which:							
			PF	companies: 1342822				RA	SC	APJ
	SNC	SCS		SRL	SA					
	No.	%	No.	No.	No.	No.	No.	No.	No.	
0	1	2	3	4	5	6	7	8	9	10
<b>Total ROMÂNIA</b>	<b>1828573</b>	<b>100,0</b>	<b>476927</b>	<b>32671</b>	<b>1596</b>	<b>1275263</b>	<b>33285</b>	<b>1352</b>	<b>2030</b>	<b>5442</b>
ALBA	28956	1,6	10055	890	11	17210	572	38	36	144
ARAD	44689	2,4	16802	54	12	26886	691	27	59	157
ARGES	46965	2,6	14942	107	15	30818	836	29	48	170
BACAU	45711	2,5	15196	1299	4	28130	738	35	149	159
BIHOR	56065	3,1	13896	126	47	40827	919	39	63	148
BISTRITA-NASAUD	22333	1,2	7750	146	21	13832	421	19	46	98
BOTOSANI	22423	1,2	10379	468	1	10928	458	21	40	128
BRASOV	57407	3,1	12484	239	20	43563	879	47	58	117
BRAILA	25038	1,4	6598	376	12	17361	525	28	42	96
BUZAU	33330	1,8	9836	3747	46	18896	588	28	46	143
CARAS-SEVERIN	22316	1,2	7638	117	9	13899	473	35	41	104
CALARASI	18294	1,0	5426	609	3	11770	360	18	22	86
CLUJ	85104	4,7	21976	2112	21	59406	1325	52	62	150
CONSTANTA	76422	4,2	15025	311	23	59216	1510	51	83	203
COVASNA	15641	0,9	5557	148	4	9496	302	24	41	69
DAMBOVITA	33876	1,9	15076	60	8	18038	497	29	32	136
DOLJ	47808	2,6	10059	1560	8	35037	900	40	39	165
GALATI	43283	2,4	9197	1574	6	31447	859	30	35	135
GIURGIU	15003	0,8	3571	35	8	10943	329	22	15	80
GORJ	21630	1,2	5294	29	1	15545	501	50	26	184
HARGHITA	28302	1,5	11652	62	7	15910	494	23	64	90
HUNEDOARA	37026	2,0	9726	1166	98	25197	684	40	33	82
IALOMITA	17013	0,9	6429	268	12	9834	354	15	27	74
IASI	58197	3,2	16579	507	111	39690	1023	34	87	164
MARAMURES	46388	2,5	18267	1927	23	25363	603	37	43	124
MEHEDINTI	20361	1,1	6635	427	3	12837	338	19	19	83
MURES	46013	2,5	17065	37	34	27943	680	30	68	156
NEAMT	39753	2,2	14585	3293	30	20907	679	29	66	164
OLT	25504	1,4	9834	1611	1	13344	499	26	27	162
PRAHOVA	60840	3,3	18807	3122	15	37683	919	50	67	177
SALAJ	18047	1,0	7058	600	4	9920	298	19	41	107
SATU MARE	31098	1,7	10359	283	9	19818	480	19	41	88
SIBIU	35653	1,9	9027	777	49	24939	670	34	37	120
SUCEAVA	46029	2,5	21646	438	8	23037	594	30	73	203
TELEORMAN	20495	1,1	7038	272	399	12152	428	21	33	152
TIMIS	64819	3,5	10747	615	30	51905	1274	38	69	141
TULCEA	18655	1,0	6573	1363	114	10002	483	18	36	66
VASLUI	22889	1,3	10861	90	13	11356	422	16	22	109
VALCEA	29803	1,6	11670	364	6	16989	500	40	64	170
VRANCEA	22338	1,2	6711	356	10	14642	461	16	35	107
MUN. BUCURESTI	345102	18,9	25032	1037	308	311324	7083	115	64	138
ILFOV	31954	1,7	3869	49	32	27223	636	21	31	93

Table no. 6

**Operations performed in the trade registers by counties and categories of registration  
in the month of October 2008**

County	Total of operations carried on		out of which:					
			New incorporations		Changes in statutory documents		Strike off companies	
	No.	%	No.	%	No.	%	No.	%
0	1	2	3	4	5	6	9	10
<b>Total ROMÂNIA</b>	<b>154201</b>	<b>100,0</b>	<b>12459</b>	<b>8,1</b>	<b>136612</b>	<b>88,6</b>	<b>5130</b>	<b>3,3</b>
ALBA	9930	100,0	230	2,3	9634	97,0	66	0,7
ARAD	3017	100,0	273	9,0	2682	88,9	62	2,1
ARGES	2776	100,0	307	11,1	2413	86,9	56	2,0
BACAU	2511	100,0	286	11,4	2185	87,0	40	1,6
BIHOR	2268	100,0	439	19,4	1749	77,1	80	3,5
BISTRITA-NASAUD	1221	100,0	155	12,7	1021	83,6	45	3,7
BOTOSANI	950	100,0	108	11,4	800	84,2	42	4,4
BRASOV	3907	100,0	404	10,3	3346	85,6	157	4,0
BRAILA	1738	100,0	175	10,1	1512	87,0	51	2,9
BUZAU	1722	100,0	212	12,3	1467	85,2	43	2,5
CARAS-SEVERIN	1569	100,0	117	7,5	1420	90,5	32	2,0
CALARASI	4825	100,0	153	3,2	4643	96,2	29	0,6
CLUJ	8681	100,0	612	7,0	6829	78,7	1240	14,3
CONSTANTA	6614	100,0	543	8,2	5948	89,9	123	1,9
COVASNA	900	100,0	92	10,2	771	85,7	37	4,1
DAMBOVITA	1357	100,0	231	17,0	1078	79,4	48	3,5
DOLJ	3905	100,0	281	7,2	3056	78,3	568	14,5
GALATI	2425	100,0	278	11,5	2087	86,1	60	2,5
GIURGIU	1521	100,0	107	7,0	1386	91,1	28	1,8
GORJ	1842	100,0	164	8,9	1640	89,0	38	2,1
HARGHITA	1447	100,0	192	13,3	1212	83,8	43	3,0
HUNEDOARA	14378	100,0	254	1,8	13725	95,5	399	2,8
IALOMITA	1217	100,0	105	8,6	1074	88,2	38	3,1
IASI	3095	100,0	459	14,8	2488	80,4	148	4,8
MARAMURES	2386	100,0	259	10,9	2059	86,3	68	2,8
MEHEDINTI	4834	100,0	132	2,7	4675	96,7	27	0,6
MURES	3355	100,0	281	8,4	2870	85,5	204	6,1
NEAMT	3713	100,0	215	5,8	3450	92,9	48	1,3
OLT	1641	100,0	147	9,0	1466	89,3	28	1,7
PRAHOVA	4156	100,0	445	10,7	3565	85,8	146	3,5
SALAJ	1430	100,0	152	10,6	1185	82,9	93	6,5
SATU MARE	1825	100,0	197	10,8	1583	86,7	45	2,5
SIBIU	1979	100,0	284	14,4	1574	79,5	121	6,1
SUCEAVA	2190	100,0	272	12,4	1817	83,0	101	4,6
TELEORMAN	824	100,0	120	14,6	685	83,1	19	2,3
TIMIS	3850	100,0	489	12,7	3208	83,3	153	4,0
TULCEA	1023	100,0	115	11,2	887	86,7	21	2,1
VASLUI	5878	100,0	115	2,0	5740	97,7	23	0,4
VALCEA	1402	100,0	180	12,8	1161	82,8	61	4,4
VRANCEA	1510	100,0	115	7,6	1364	90,3	31	2,1
MUN. BUCURESTI	25731	100,0	2366	9,2	22937	89,1	428	1,7
ILFOV	2658	100,0	398	15,0	2220	83,5	40	1,5

Table no.7

**Number of incorporations in the trade registers by counties and capital sources in the month of October 2008**

County	Total		out of which:						Rnking by: *	
			Private capital				State majority capital			Mixed capital (state+private)
			out of which:				out of which:			
			PF	Companies	SC	APJ	RA	Companies		Companies
No.	%	No.	No.	No.		No.	No.	No.		
0	1	2	3	4	5		6	7	8	9
<b>Total ROMÂNIA</b>	<b>12459</b>	<b>100,0</b>	<b>3539</b>	<b>8897</b>	<b>2</b>	<b>16</b>		<b>3</b>	<b>2</b>	<b>X</b>
ALBA	230	1,8	90	140						21
ARAD	273	2,2	91	182						16
ARGES	307	2,5	72	235						10
BACAU	286	2,3	111	172	2	1				11
BIHOR	439	3,5	165	274						7
BISTRITA-NASAUD	155	1,2	43	112						29
BOTOSANI	108	0,9	35	73						39
BRASOV	404	3,2	115	289						8
BRAILA	175	1,4	73	102						27
BUZAU	212	1,7	49	163						23
CARAS-SEVERIN	117	0,9	19	96		2				35
CALARASI	153	1,2	47	106						30
CLUJ	612	4,9	186	426						2
CONSTANTA	543	4,4	104	439						3
COVASNA	92	0,7	47	44		1				42
DAMBOVITA	231	1,9	100	130		1				20
DOLJ	281	2,3	63	215		3				13
GALATI	278	2,2	76	202						15
GIURGIU	107	0,9	23	84						40
GORJ	164	1,3	56	108						28
HARGHITA	192	1,5	93	96		3				25
HUNEDOARA	254	2,0	82	172						19
IALOMITA	105	0,8	41	64						41
IASI	459	3,7	151	307				1		5
MARAMURES	259	2,1	77	181				1		18
MEHEDINTI	132	1,1	44	88						33
MURES	281	2,3	113	168						14
NEAMT	215	1,7	57	156		2				22
OLT	147	1,2	43	103		1				32
PRAHOVA	445	3,6	132	313						6
SALAJ	152	1,2	52	100						31
SATU MARE	197	1,6	69	128						24
SIBIU	284	2,3	97	187						12
SUCEAVA	272	2,2	98	173					1	17
TELEORMAN	120	1,0	28	92						34
TIMIS	489	3,9	90	398		1				4
TULCEA	115	0,9	38	77						36
VASLUI	115	0,9	47	68						37
VALCEA	180	1,4	67	112		1				26
VRANCEA	115	0,9	19	96						38
MUN. BUCURESTI	2366	19,0	503	1862				1		1
ILFOV	398	3,2	33	364					1	9

Table no.8

**Number of incorporations in the trade registers by counties and business categories in the month of October 2008**

County	Total		out of which:						APJ	
			PF	companies: 8902				RA		SC
	SNC	SCS		SRL	SA					
	No.	%	No.	No.	No.	No.	No.	No.		
0	1	2	3	4	5	6	7	8	9	
<b>Total ROMÂNIA</b>	<b>12459</b>	<b>100,0</b>	<b>3539</b>	<b>2</b>	<b>2</b>	<b>8825</b>	<b>73</b>		<b>2</b>	<b>16</b>
ALBA	230	1,8	90			140				
ARAD	273	2,2	91	1		181				
ARGES	307	2,5	72			234	1			
BACAU	286	2,3	111			172		2		1
BIHOR	439	3,5	165			271	3			
BISTRITA-NASAUD	155	1,2	43			110	2			
BOTOSANI	108	0,9	35			73				
BRASOV	404	3,2	115			284	5			
BRAILA	175	1,4	73			102				
BUZAU	212	1,7	49			160	3			
CARAS-SEVERIN	117	0,9	19			96				2
CALARASI	153	1,2	47			106				
CLUJ	612	4,9	186			425	1			
CONSTANTA	543	4,4	104			434	5			
COVASNA	92	0,7	47			44				1
DAMBOVITA	231	1,9	100			129	1			1
DOLJ	281	2,3	63			213	2			3
GALATI	278	2,2	76			200	2			
GIURGIU	107	0,9	23			84				
GORJ	164	1,3	56			106	2			
HARGHITA	192	1,5	93			96				3
HUNEDOARA	254	2,0	82			170	2			
IALOMITA	105	0,8	41	1	1	61	1			
IASI	459	3,7	151			306	2			
MARAMURES	259	2,1	77			182				
MEHEDINTI	132	1,1	44			86	2			
MURES	281	2,3	113			168				
NEAMT	215	1,7	57			155	1			2
OLT	147	1,2	43			101	2			1
PRAHOVA	445	3,6	132			311	2			
SALAJ	152	1,2	52			99	1			
SATU MARE	197	1,6	69			128				
SIBIU	284	2,3	97			186	1			
SUCEAVA	272	2,2	98			173	1			
TELEORMAN	120	1,0	28			90	2			
TIMIS	489	3,9	90			396	2			1
TULCEA	115	0,9	38			77				
VASLUI	115	0,9	47			68				
VALCEA	180	1,4	67			110	2			1
VRANCEA	115	0,9	19			96				
MUN. BUCURESTI	2366	19,0	503		1	1840	22			
ILFOV	398	3,2	33			362	3			

Table no. 9

Number of incorporations in the trade registers by domains of activity and business categories in the month of October 2008

CAEN segment	Field of activity	Total		out of which:								
				PF	companies: 8902				RA	SC	APJ	
		No.	%		No.	SNC	SCS	SRL				SA
				No.		No.	No.	No.	No.	No.	No.	
0	1	2	3	4	5	6	7	8	9	10	11	
	<b>Total ROMÂNIA</b>	<b>12459</b>	<b>100,0</b>	<b>3539</b>	<b>2</b>	<b>2</b>	<b>8825</b>	<b>73</b>			<b>2</b>	<b>16</b>
1	Agriculture, hunting and related service activities	226	1,8	83	1	1	136					5
2	Forestry and logging	53	0,4	6			47					
3	Fishing and aquaculture	52	0,4	45			7					
5	Mining of hard and brown coal	1	0,0				1					
6	Extraction of crude petroleum and natural gas	1	0,0				1					
7	Mining of metal ores											
8	Other mining and quarrying	22	0,2				22					
9	Mining support service activities											
10	Manufacture of food products	86	0,7	17			68	1				
11	Manufacture of beverages	48	0,4	40			7	1				
12	Manufacture of tobacco products											
13	Manufacture of textiles	20	0,2	1			19					
14	Manufacture of wearing apparel	57	0,5	19			38					
15	Tanning and dressing of leather; manufacture of luggage, handbags, saddlery, harness and footwear; dressing and dyeing of fur	22	0,2	2			19	1				
16	Manufacture of wood and of products of wood and cork, except furniture; manufacture of articles of straw and plaiting materials	96	0,8	20			74	2				
17	Manufacture of paper and paper products	8	0,1				8					
18	Printing and reproduction of recorded media	36	0,3	5			31					
19	Manufacture of coke and refined petroleum products											
20	Manufacture of chemicals and chemical products	6	0,0				6					
21	Manufacture of basic pharmaceutical products and pharmaceutical preparations											
22	Manufacture of rubber and plastic products	44	0,4	4			40					
23	Manufacture of other non-metallic mineral products	49	0,4	12			37					
24	Manufacture of basic metals	8	0,1				8					
25	Manufacture of fabricated metal products, except machinery and equipment	121	1,0	34			87					
26	Manufacture of computer, electronic and optical products	9	0,1				8	1				
27	Manufacture of electrical equipment	5	0,0				5					
28	Manufacture of machinery and equipment n.e.c.	6	0,0				6					
29	Manufacture of motor vehicles, trailers and semi-trailers	4	0,0				4					
30	Manufacture of other transport equipment	10	0,1				10					
31	Manufacture of furniture	67	0,5	16			51					
32	Other manufacturing	36	0,3	15			21					
33	Repair and installation of machinery and equipment	53	0,4	7			45				1	
35	Electricity, gas, steam and air conditioning supply	42	0,3				37	5				
36	Water collection, treatment and supply	1	0,0				1					
37	Sewerage	7	0,1	3			4					
38	Waste collection, treatment and disposal activities; materials recovery	44	0,4	3			41					
39	Remediation activities and other waste management services	1	0,0				1					
41	Construction of buildings	1050	8,4	65		1	982	2				
42	Civil engineering	54	0,4	3			50	1				
43	Specialised construction activities	695	5,6	196			499					
45	Wholesale and retail trade and repair of motor vehicles and motorcycles	342	2,7	46			296					
46	Wholesale trade, except of motor vehicles and motorcycles	1277	10,2	281			994	1				1
47	Retail trade, except of motor vehicles and motorcycles	2053	16,5	617			1435	1				
49	Land transport and transport via pipelines	717	5,8	213			502	2				
50	Water transport	4	0,0				4					



Table no. 10

**Number of incorporated trading companies and the value of the subscribed share capital, by counties, in the month of October 2008**

County	Total registered companies		Subscribed capital		Average subscribed capital on company
	No.	%	thousand Lei	%	thousand Lei
0	1	2	3	4	5
<b>Total ROMÂNIA</b>	<b>8902</b>	<b>100,0</b>	<b>189317,6</b>	<b>100,0</b>	<b>21,4</b>
ALBA	140	1,6	55,6	0,0	0,4
ARAD	182	2,0	415,4	0,2	2,3
ARGES	235	2,6	297,2	0,2	1,3
BACAU	172	1,9	1581,9	0,8	9,2
BIHOR	274	3,1	10632,8	5,6	39,4
BISTRITA-NASAUD	112	1,3	218,9	0,1	2,0
BOTOSANI	73	0,8	148,1	0,1	2,0
BRASOV	289	3,2	518,1	0,3	1,8
BRAILA	102	1,1	70,8	0,0	0,7
BUZAU	163	1,8	70859,9	37,4	437,4
CARAS-SEVERIN	96	1,1	50,9	0,0	0,5
CALARASI	106	1,2	102,0	0,1	1,0
CLUJ	426	4,8	655,1	0,3	1,5
CONSTANTA	439	4,9	12660,4	6,7	29,0
COVASNA	44	0,5	16,5	***	0,4
DAMBOVITA	130	1,5	47,4	0,0	0,4
DOLJ	215	2,4	198,6	0,1	0,9
GALATI	202	2,3	5747,1	3,0	28,7
GIURGIU	84	0,9	5592,8	3,0	66,6
GORJ	108	1,2	127,4	0,1	1,2
HARGHITA	96	1,1	350,2	0,2	3,6
HUNEDOARA	172	1,9	751,9	0,4	4,4
IALOMITA	64	0,7	33,9	0,0	0,5
IASI	308	3,5	576,8	0,3	1,9
MARAMURES	182	2,0	191,4	0,1	1,1
MEHEDINTI	88	1,0	654,2	0,3	7,5
MURES	168	1,9	267,1	0,1	1,6
NEAMT	156	1,8	108,2	0,1	0,7
OLT	103	1,2	55,2	0,0	0,5
PRAHOVA	313	3,5	389,9	0,2	1,3
SALAJ	100	1,1	48,0	0,0	0,5
SATU MARE	128	1,4	67,8	0,0	0,5
SIBIU	187	2,1	342,3	0,2	1,8
SUCEAVA	174	2,0	178,1	0,1	1,0
TELEORMAN	92	1,0	243,2	0,1	2,7
TIMIS	398	4,5	6234,1	3,3	15,7
TULCEA	77	0,9	48,6	0,0	0,6
VASLUI	68	0,8	17,2	***	0,3
VALCEA	112	1,3	829,5	0,4	7,4
VRANCEA	96	1,1	127,0	0,1	1,3
MUN. BUCURESTI	1863	20,9	46938,4	24,8	25,5
ILFOV	365	4,1	20867,8	11,0	57,3

Table no. 11

**Number of incorporated trading companies and the value of the subscribed share capital by legal forms, in the month of October 2008**

Company type	Total registered companies		Subscribed capital		Average subscribed capital on company
	No.	%	thousand Lei	%	thousand Lei
0	1	2	3	4	5
<b>Total ROMÂNIA</b>	<b>8902</b>	<b>100,0</b>	<b>189317,6</b>	<b>100,0</b>	<b>21,4</b>
SNC	2	0,0	0,6	***	0,3
SCS	2	0,0	30,2	0,0	15,1
SA	73	0,8	106984,5	56,5	4114,8
SRL	8825	99,1	82302,3	43,5	9,3
SCA					

**Note:** The average does not include fillials because according to the Law no.31/1990 they are not juridical persons

\*\*\* Less than 0,01%

Diagram no.5

