



MINISTRY OF JUSTICE

THE NATIONAL TRADE REGISTER OFFICE

București, Bd. Unirii nr. 74, Bl. J3b, tronson II+III, sector 3; Telefon: +40 21 316.08.04, 316.08.10; Fax: +40 21 316.08.03; Cod poștal: 030837
Website: www.onrc.ro; E-mail: onrc@onrc.ro; Cod identificare Fiscală: 14942091

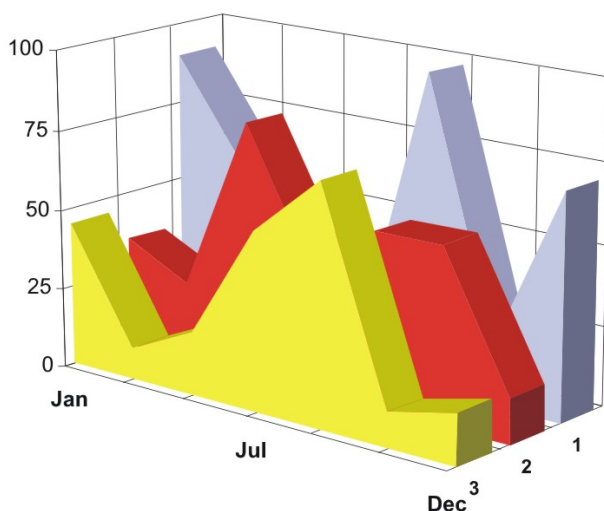
OPERATIONS IN THE CENTRAL TRADE REGISTER

STATISTIC SYNTHESIS

OF

RECORDS IN THE CENTRAL TRADE REGISTER

- the 30th of September 2008 - provisional data -



- ISSUE No. 202 -

**MINISTRY OF JUSTICE
THE NATIONAL TRADE REGISTER OFFICE**

- Operations such as incorporation of trading companies, submission of changes, and strike-off are carried out based on Law No.26/1990, as republished, Law No.31/1990, as republished and on the Methodological Norms no. P/608/1998.

- This work reflects the evolution of the operations with the Trade Register Office attached to Bucharest Law Court and the Trade Register Offices attached to County Law Courts.

- The data contained in the Central Trade Register refer to operations for which law sets out the obligation of being registered in the trade registers kept by the 42 trade register offices attached to law courts.

- | |
|--|
| <ul style="list-style-type: none">• <i>The content of this publication shall not be reproduced, partly or entirely, in original or modified form, and shall not be stored in a recovery system and shall not be transmitted in any form or by any means without prior written authorization of the Ministry of Justice – The National Trade Register Office.</i>• <i>The content of this publication September be used in articles, studies, books, as supporting or explanatory data only by clearly and accurately indicating the source.</i> |
|--|

CONTENTS

Page

1	Definitions	1
2.1	Data related to the period December 1990 –September 2008	3
Table no. 1 – Operations performed in the trade registers by categories of registration during December 1990 –September 2008, total by country and by counties, shares of counties in the total by country		3
Table no. 2 – Operations performed in the trade registers by categories of registration during December 1990 –September 2008, total by country and counties, share of categories of operations in the total of each county		4
Table no. 3 – Number and structure of incorporations in the trade registers during December 1990-September 2008		5
Chart no. 1 – Structure by years of incorporations in the trade register		
Table no. 4 – Number of incorporations in the trade registers by counties and capital sources during December 1990 - September 2008		6
Table no. 5 – Number of incorporations in the trade registers by counties and business categories during December 1990 –September 2008		7
2.2	Data related to September 2008	8
Table no. 6 – Operations performed in the trade registers by counties and categories of registrations in the month of September 2008		8
Table no. 7 – Number of incorporations in the trade registers by counties and capital sources in the month of September 2008		9
Table no. 8 – Number of incorporations in the trade registers by counties and business categories in the month of September 2008		10
Table no. 9 –Number of incorporations in the trade registers by domains of activity and business categories in the month of September 2008		11-12
Table no. 10 – Number of incorporated trading companies and the value of subscribed share capital, by counties, in the month of September 2008		13
Table no. 11– Number of incorporated trading companies and the value of subscribed share capital by legal forms, in the month of September 2008		14
Chart no. 5 – Average value of subscribed share capital by types of trading companies in the month of September 2008		14

Definitions

The Trade Register Office was established based on Law No. 26/1990, as republished and subsequently amended and supplemented, operates as an active institution since December 1990 and is twofold structured:

- at national level, represented by the National Trade Register Office organized under the authority of the Ministry of Justice
- at local level, represented by the 42 Trade Register Offices attached to Law Courts, organized under the subordination of the National Trade Register Office

Categories of persons liable to registration in the trade register:

- natural persons: authorized natural persons, individual enterprises and family enterprises currently carrying on trading activities;
 - legal persons represented by: Trading Companies, National Societies and Companies, National R&D Institutes, Autonomous Administrations, Co-operative Societies, Agricultural Co-operatives, Co-operative Organizations, Economic Interest Groupings, European Economic Interest Groupings, European Societies, European Co-operative Societies, branches of trading companies with legal establishment, operation and incorporation regime of trading company legal form under which they were incorporated.
- **Terms used in tables and charts**
- **Number of companies**, depending on the table, represents the number of trading companies incorporated during the reference period, the number of trading companies struck-off from the trade register. The following forms of organization are included: limited liability companies, joint-stock companies, limited partnerships by share, limited partnerships, general partnerships, and branches thereof.
 - **Value of subscribed share capital:**
 - **total, expressed in national currency:** the share capital value resulted by adding up the subscribed values (in cash and in kind) in national currency (lei)

➤ **Regions of economic development:**

<i>North-East:</i>	Suceava, Botoșani, Neamț, Iași, Bacău, Vaslui.
<i>South-East:</i>	Vrancea, Galați, Buzău, Brăila, Tulcea, Constanța.
<i>South-Muntenia:</i>	Argeș, Dâmbovița, Prahova, Teleorman, Giurgiu, Călărași, Ialomița.
<i>South-West Oltenia:</i>	Gorj, Vâlcea, Dolj, Mehedinți, Olt.
<i>West:</i>	Arad, Caraș-Severin, Hunedoara, Timiș.
<i>North-West:</i>	Bihor, Bistrița, Cluj, Satu Mare, Sălaj, Maramureș.
<i>Center:</i>	Alba, Brașov, Covasna, Harghita, Mureș, Sibiu.
<i>Bucharest-Ilfov:</i>	București, Ilfov.

NACE Code – The classification of economic activities in the national economy was approved by GO No. 656/1997, amended by Order No 601/2002 and Order no. 337/2007 of the President of the National Institute of Statistics, and complies with the international classification used in statistic reports and official documents. The activities are ranked by the harmonization principle, by sections, divisions, groups and classes.

Abbreviations

- **PF** - Natural Person; the following forms of organization are included in this category: natural persons and family associations registered until 25.04.2008, authorized natural persons, individual enterprises and family enterprises.
- **SNC** - General Partnership
- **SCS** - Limited Partnership
- **SCA** - Limited Partnership by Share
- **SA** - Joint-Stock Company
- **SRL** - Limited Liability Company
- **RA** - Autonomous Administration
- **APJ** - Other legal persons having the obligation to register in the trade register: National R&D Institutes, Economic Interest Groupings, European Economic Interest Groupings, European Societies, European Co-operative Societies, Agricultural Co-operatives, Co-operative Organizations.

Sources of Information:

The integrated IT system of the trade register is designed by The National Trade Register Office in compliance with the provisions of the related legislation in force. The source of information consists of the trade registers organized in computerized system, kept by the trade register offices attached to law courts.

Table no. 1

**Operations performed in the trade registers by categories of registration during
December 1990 – September 2008, total by country and by counties, share of
counties in the total by country**

Counties	Total of registered operations		out of which :					
			Registered companies		Changes in statutory documents		Strike off companies	
	No.	%	No.	%	No.	%	No.	%
0	1	2	3	4	5	6	11	12
Total ROMÂNIA	10498373	100,0	1816114	100,0	8133395	100,0	548864	100,0
ALBA	136015	1,3	28726	1,6	101654	1,2	5635	1,0
ARAD	242462	2,3	44416	2,4	186549	2,3	11497	2,1
ARGES	257796	2,5	46658	2,6	200933	2,5	10205	1,9
BACAU	236464	2,3	45425	2,5	178641	2,2	12398	2,3
BIHOR	300949	2,9	55626	3,1	229391	2,8	15932	2,9
BISTRITA-NASAUD	124438	1,2	22178	1,2	95437	1,2	6823	1,2
BOTOSANI	97761	0,9	22315	1,2	69286	0,9	6160	1,1
BRASOV	426916	4,1	57003	3,1	356942	4,4	12971	2,4
BRAILA	142355	1,4	24863	1,4	113265	1,4	4227	0,8
BUZAU	185203	1,8	33118	1,8	140714	1,7	11371	2,1
CARAS-SEVERIN	127607	1,2	22199	1,2	96806	1,2	8602	1,6
CALARASI	88651	0,8	18141	1,0	65511	0,8	4999	0,9
CLUJ	460972	4,4	84492	4,7	360653	4,4	15827	2,9
CONSTANTA	452502	4,3	75879	4,2	349399	4,3	27224	5,0
COVASNA	93057	0,9	15549	0,9	72688	0,9	4820	0,9
DAMBOVITA	152649	1,5	33645	1,9	104973	1,3	14031	2,6
DOLJ	282811	2,7	47527	2,6	221711	2,7	13573	2,5
GALATI	277915	2,6	43005	2,4	220363	2,7	14547	2,7
GIURGIU	82631	0,8	14896	0,8	62478	0,8	5257	1,0
GORJ	161117	1,5	21466	1,2	132820	1,6	6831	1,2
HARGHITA	151637	1,4	28110	1,5	118049	1,5	5478	1,0
HUNEDOARA	203321	1,9	36772	2,0	153109	1,9	13440	2,4
IALOMITA	101385	1,0	16908	0,9	78230	1,0	6247	1,1
IASI	347678	3,3	57738	3,2	276600	3,4	13340	2,4
MARAMURES	214557	2,0	46129	2,5	157009	1,9	11419	2,1
MEHEDINTI	111211	1,1	20229	1,1	82763	1,0	8219	1,5
MURES	301553	2,9	45732	2,5	240866	3,0	14955	2,7
NEAMT	222140	2,1	39538	2,2	167599	2,1	15003	2,7
OLT	129019	1,2	25357	1,4	94176	1,2	9486	1,7
PRAHOVA	356953	3,4	60395	3,3	279892	3,4	16666	3,0
SALAJ	88502	0,8	17895	1,0	65323	0,8	5284	1,0
SATU MARE	165924	1,6	30901	1,7	124131	1,5	10892	2,0
SIBIU	229756	2,2	35369	1,9	185123	2,3	9264	1,7
SUCEAVA	256549	2,4	45757	2,5	193183	2,4	17609	3,2
TELEORMAN	114513	1,1	20375	1,1	89145	1,1	4993	0,9
TIMIS	358230	3,4	64330	3,5	276154	3,4	17746	3,2
TULCEA	112793	1,1	18540	1,0	88785	1,1	5468	1,0
VASLUI	122149	1,2	22774	1,3	90441	1,1	8934	1,6
VALCEA	158721	1,5	29623	1,6	119726	1,5	9372	1,7
VRANCEA	127302	1,2	22223	1,2	100108	1,2	4971	0,9
MUN. BUCURESTI	2135827	20,3	342736	18,9	1673060	20,6	120031	21,9
ILFOV	158382	1,5	31556	1,7	119709	1,5	7117	1,3

Table no. 2

Operations performed in the trade registers during December 1990 – September 2008, total by country and counties, share of categories of operations in the total of each county

Counties	Total of registered operations		out of which :					
			Registered companies		Changes in statutory documents		Strike off companies	
	No.	%	No.	%	No.	%	No.	%
0	1	2	3	4	5	6	11	12
Total ROMÂNIA	10498373	100,0	1816114	17,3	8133395	77,5	548864	5,2
ALBA	136015	100,0	28726	21,1	101654	74,7	5635	4,1
ARAD	242462	100,0	44416	18,3	186549	76,9	11497	4,7
ARGES	257796	100,0	46658	18,1	200933	77,9	10205	4,0
BACAU	236464	100,0	45425	19,2	178641	75,5	12398	5,2
BIHOR	300949	100,0	55626	18,5	229391	76,2	15932	5,3
BISTRITA-NASAUD	124438	100,0	22178	17,8	95437	76,7	6823	5,5
BOTOSANI	97761	100,0	22315	22,8	69286	70,9	6160	6,3
BRASOV	426916	100,0	57003	13,4	356942	83,6	12971	3,0
BRAILA	142355	100,0	24863	17,5	113265	79,6	4227	3,0
BUZAU	185203	100,0	33118	17,9	140714	76,0	11371	6,1
CARAS-SEVERIN	127607	100,0	22199	17,4	96806	75,9	8602	6,7
CALARASI	88651	100,0	18141	20,5	65511	73,9	4999	5,6
CLUJ	460972	100,0	84492	18,3	360653	78,2	15827	3,4
CONSTANTA	452502	100,0	75879	16,8	349399	77,2	27224	6,0
COVASNA	93057	100,0	15549	16,7	72688	78,1	4820	5,2
DAMBOVITA	152649	100,0	33645	22,0	104973	68,8	14031	9,2
DOLJ	282811	100,0	47527	16,8	221711	78,4	13573	4,8
GALATI	277915	100,0	43005	15,5	220363	79,3	14547	5,2
GIURGIU	82631	100,0	14896	18,0	62478	75,6	5257	6,4
GORJ	161117	100,0	21466	13,3	132820	82,4	6831	4,2
HARGHITA	151637	100,0	28110	18,5	118049	77,8	5478	3,6
HUNEDOARA	203321	100,0	36772	18,1	153109	75,3	13440	6,6
IALOMITA	101385	100,0	16908	16,7	78230	77,2	6247	6,2
IASI	347678	100,0	57738	16,6	276600	79,6	13340	3,8
MARAMURES	214557	100,0	46129	21,5	157009	73,2	11419	5,3
MEHEDINTI	111211	100,0	20229	18,2	82763	74,4	8219	7,4
MURES	301553	100,0	45732	15,2	240866	79,9	14955	5,0
NEAMT	222140	100,0	39538	17,8	167599	75,4	15003	6,8
OLT	129019	100,0	25357	19,7	94176	73,0	9486	7,4
PRAHOVA	356953	100,0	60395	16,9	279892	78,4	16666	4,7
SALAJ	88502	100,0	17895	20,2	65323	73,8	5284	6,0
SATU MARE	165924	100,0	30901	18,6	124131	74,8	10892	6,6
SIBIU	229756	100,0	35369	15,4	185123	80,6	9264	4,0
SUCEAVA	256549	100,0	45757	17,8	193183	75,3	17609	6,9
TELEORMAN	114513	100,0	20375	17,8	89145	77,8	4993	4,4
TIMIS	358230	100,0	64330	18,0	276154	77,1	17746	5,0
TULCEA	112793	100,0	18540	16,4	88785	78,7	5468	4,8
VASLUI	122149	100,0	22774	18,6	90441	74,0	8934	7,3
VALCEA	158721	100,0	29623	18,7	119726	75,4	9372	5,9
VRANCEA	127302	100,0	22223	17,5	100108	78,6	4971	3,9
MUN. BUCURESTI	2135827	100,0	342736	16,0	1673060	78,3	120031	5,6
ILFOV	158382	100,0	31556	19,9	119709	75,6	7117	4,5

Table no.3

Number and structure of incorporations in the trade registers during December 1990-September 2008

Period (year, month)	Registered companies	Percentage	
	No.	%	%
0	1	2	3
Total, 30 September 2008, out of which	1816114	100,00	
Year 1990	81	0,00	
Year 1991	95840	5,28	
Year 1992	137456	7,57	
Year 1993	117078	6,45	
Year 1994	137445	7,57	
Year 1995	65479	3,61	
Year 1996	62089	3,42	
Year 1997	55663	3,06	
Year 1998	63878	3,52	
Year 1999	57197	3,15	
Year 2000	57291	3,15	
Year 2001	61265	3,37	
Year 2002	84780	4,67	
Year 2003	123582	6,80	
Year 2004	144284	7,94	
Year 2005	159464	8,78	
Year 2006	135371	7,45	
Year 2007	144728	7,97	
Year 2008 (I - XII) out of which :	113143		80,1
January	9833		8,7
February	15237		10,5
March	15253		10,5
April	13379		9,2
May	12489		8,6
June	11898		8,2
July	12772		8,8
August	10557		7,3
September	11725		8,10

Note: Column 2 reveals the annual structure of incorporations; column 3 reveals the structure by months during the current year.

Diagram no.1

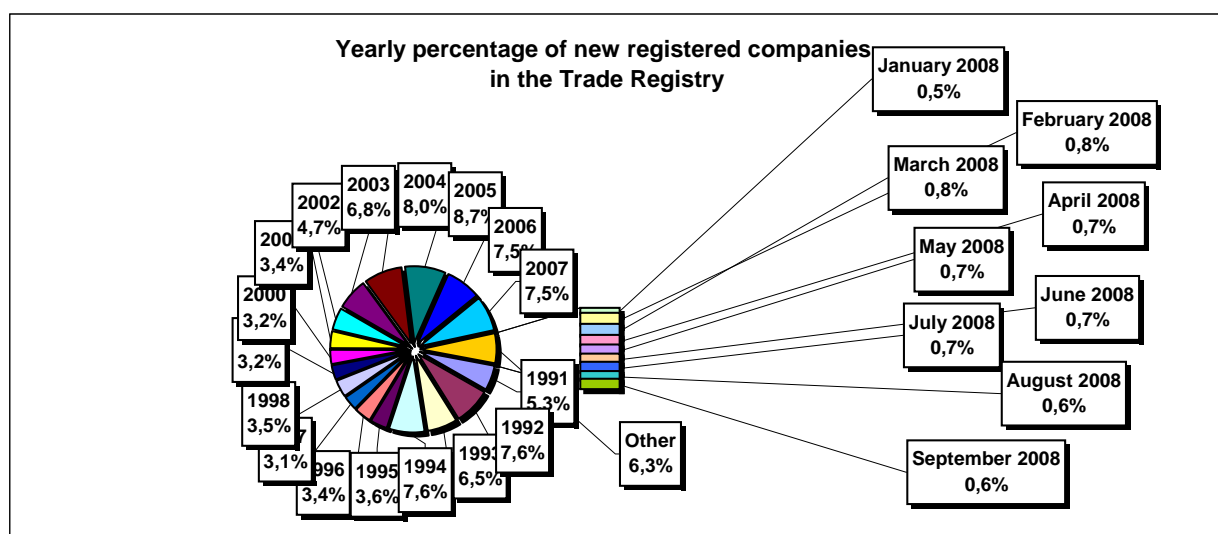


Table no. 4

**Number of incorporations in the trade registers by counties and capital sources during
December 1990 - September 2008**

Counties	Total		out of which:						Ranking by: *	
			Private capital				State majority capital			Mixed capital (state+private)
			out of which:				out of which:			
			PF	Companies	SC	APJ	RA	Companies		Companies
No.	%	No.	No.	No.	No.	No.	No.	No.		
0	1	2	3	4	5	6	6	7	8	9
Total ROMÂNIA	1816114	100,0	473388	1322929	2028	5426	1352	2376	8615	X
ALBA	28726	1,6	9965	18326	36	144	38	47	170	25
ARAD	44417	2,4	16711	27087	59	157	27	41	335	15
ARGES	46658	2,6	14870	31359	48	170	29	30	152	10
BACAU	45425	2,5	15085	29732	147	158	35	42	226	14
BIHOR	55626	3,1	13731	41275	63	148	39	62	308	8
BISTRITA-NASAUD	22178	1,2	7707	14170	46	98	19	29	109	33
BOTOSANI	22315	1,2	10344	11490	40	128	21	173	119	30
BRASOV	57003	3,1	12369	44153	58	117	47	87	172	7
BRAILA	24863	1,4	6525	17960	42	96	28	45	167	28
BUZAU	33118	1,8	9787	22941	46	143	28	42	131	21
CARAS-SEVERIN	22199	1,2	7619	14200	41	102	35	65	137	32
CALARASI	18141	1,0	5379	12464	22	86	18	77	95	38
CLUJ	84492	4,7	21790	62134	62	150	52	41	263	2
CONSTANTA	75879	4,2	14921	60027	83	203	51	51	543	3
COVASNA	15549	0,9	5510	9765	41	68	24	32	109	41
DAMBOVITA	33645	1,9	14976	18245	32	135	29	75	153	20
DOLJ	47527	2,6	9996	37029	39	162	40	58	203	9
GALATI	43005	2,4	9121	33490	35	135	30	51	143	16
GIURGIU	14896	0,8	3548	11012	15	80	22	109	110	42
GORJ	21466	1,2	5238	15785	26	184	50	83	100	34
HARGHITA	28110	1,5	11559	16104	64	87	23	43	230	26
HUNEDOARA	36772	2,0	9644	26597	33	82	40	92	284	18
IALOMITA	16908	0,9	6388	10267	27	74	15	46	91	40
IASI	57738	3,2	16428	40611	87	164	34	70	344	6
MARAMURES	46129	2,5	18190	27573	43	124	37	39	123	11
MEHEDINTI	20229	1,1	6591	13392	19	83	19	27	98	36
MURES	45732	2,5	16952	28324	68	156	30	34	168	13
NEAMT	39538	2,2	14528	24557	66	162	29	30	166	17
OLT	25357	1,4	9791	15165	27	161	26	64	123	27
PRAHOVA	60395	3,3	18675	41082	67	177	50	72	272	5
SALAJ	17895	1,0	7006	10630	41	107	19	28	64	39
SATU MARE	30901	1,7	10290	20287	41	88	19	42	134	23
SIBIU	35369	1,9	8930	25982	37	120	34	108	158	19
SUCEAVA	45757	2,5	21548	23619	73	203	30	64	220	12
TELEORMAN	20375	1,1	7010	12932	33	152	21	45	182	35
TIMIS	64330	3,5	10657	53009	69	140	38	69	348	4
TULCEA	18540	1,0	6535	11631	36	66	18	42	212	37
VASLUI	22774	1,3	10814	11636	22	109	16	41	136	29
VALCEA	29623	1,6	11603	17596	64	169	40	37	114	24
VRANCEA	22223	1,2	6692	15232	35	107	16	27	114	31
MUN. BUCURESTI	342735	18,9	24529	316666	64	138	115	103	1120	1
ILFOV	31556	1,7	3836	27393	31	93	21	13	169	22

Table no. 5

**Number of incorporations in the trade registers by counties and business categories
during December 1990 – September 2008**

County	Total		out of which:							
			PF	companies: 1333920				RA	SC	APJ
	SNC	SCS		SRL	SA					
	No.	%	No.	No.	No.	No.	No.	No.	No.	
0	1	2	3	4	5	6	7	8	9	10
Total ROMÂNIA	1816114	100,0	473388	32669	1594	1266438	33212	1352	2028	5426
ALBA	28726	1,6	9965	890	11	17070	572	38	36	144
ARAD	44416	2,4	16711	53	12	26705	691	27	59	157
ARGES	46658	2,6	14870	107	15	30584	835	29	48	170
BACAU	45425	2,5	15085	1299	4	27958	738	35	147	158
BIHOR	55626	3,1	13731	126	47	40556	916	39	63	148
BISTRITA-NASAUD	22178	1,2	7707	146	21	13722	419	19	46	98
BOTOSANI	22315	1,2	10344	468	1	10855	458	21	40	128
BRASOV	57003	3,1	12369	239	20	43279	874	47	58	117
BRAILA	24863	1,4	6525	376	12	17259	525	28	42	96
BUZAU	33118	1,8	9787	3747	46	18736	585	28	46	143
CARAS-SEVERIN	22199	1,2	7619	117	9	13803	473	35	41	102
CALARASI	18141	1,0	5379	609	3	11664	360	18	22	86
CLUJ	84492	4,7	21790	2112	21	58981	1324	52	62	150
CONSTANTA	75879	4,2	14921	311	23	58782	1505	51	83	203
COVASNA	15549	0,9	5510	148	4	9452	302	24	41	68
DAMBOVITA	33645	1,9	14976	60	8	17909	496	29	32	135
DOLJ	47527	2,6	9996	1560	8	34824	898	40	39	162
GALATI	43005	2,4	9121	1574	6	31247	857	30	35	135
GIURGIU	14896	0,8	3548	35	8	10859	329	22	15	80
GORJ	21466	1,2	5238	29	1	15439	499	50	26	184
HARGHITA	28110	1,5	11559	62	7	15814	494	23	64	87
HUNEDOARA	36772	2,0	9644	1166	98	25027	682	40	33	82
IALOMITA	16908	0,9	6388	267	11	9773	353	15	27	74
IASI	57738	3,2	16428	507	111	39384	1021	34	87	164
MARAMURES	46129	2,5	18190	1927	23	25181	603	37	43	124
MEHEDINTI	20229	1,1	6591	427	3	12751	336	19	19	83
MURES	45732	2,5	16952	37	34	27775	680	30	68	156
NEAMT	39538	2,2	14528	3293	30	20752	678	29	66	162
OLT	25357	1,4	9791	1611	1	13243	497	26	27	161
PRAHOVA	60395	3,3	18675	3122	15	37372	917	50	67	177
SALAJ	17895	1,0	7006	600	4	9821	297	19	41	107
SATU MARE	30901	1,7	10290	283	9	19690	480	19	41	88
SIBIU	35369	1,9	8930	777	49	24753	669	34	37	120
SUCEAVA	45757	2,5	21548	438	8	22864	593	30	73	203
TELEORMAN	20375	1,1	7010	272	399	12062	426	21	33	152
TIMIS	64330	3,5	10657	615	30	51509	1272	38	69	140
TULCEA	18540	1,0	6535	1363	114	9925	483	18	36	66
VASLUI	22774	1,3	10814	90	13	11288	422	16	22	109
VALCEA	29623	1,6	11603	364	6	16879	498	40	64	169
VRANCEA	22223	1,2	6692	356	10	14546	461	16	35	107
MUN. BUCURESTI	342736	18,9	24529	1037	307	309484	7061	115	64	138
ILFOV	31556	1,7	3836	49	32	26861	633	21	31	93

Table no. 6

**Operations performed in the trade registers by counties and categories of registration
in the month of September 2008**

County	Total of operations carried on		out of which:					
			New incorporations		Changes in statutory documents		Strike off companies	
	No.	%	No.	%	No.	%	No.	%
0	1	2	3	4	5	6	9	10
Total ROMÂNIA	135848	100,0	11725	8,6	120947	89,0	3176	2,3
ALBA	1780	100,0	204	11,5	1512	84,9	64	3,6
ARAD	3798	100,0	267	7,0	3477	91,5	54	1,4
ARGES	1534	100,0	270	17,6	1217	79,3	47	3,1
BACAU	2465	100,0	292	11,8	2133	86,5	40	1,6
BIHOR	5220	100,0	371	7,1	4643	88,9	206	3,9
BISTRITA-NASAUD	1160	100,0	140	12,1	980	84,5	40	3,4
BOTOSANI	1047	100,0	167	16,0	843	80,5	37	3,5
BRASOV	13663	100,0	392	2,9	13200	96,6	71	0,5
BRAILA	1648	100,0	144	8,7	1460	88,6	44	2,7
BUZAU	1530	100,0	182	11,9	1311	85,7	37	2,4
CARAS-SEVERIN	1145	100,0	117	10,2	1011	88,3	17	1,5
CALARASI	800	100,0	120	15,0	657	82,1	23	2,9
CLUJ	4614	100,0	450	9,8	4069	88,2	95	2,1
CONSTANTA	3968	100,0	454	11,4	3150	79,4	364	9,2
COVASNA	1296	100,0	84	6,5	1167	90,0	45	3,5
DAMBOVITA	1287	100,0	210	16,3	1035	80,4	42	3,3
DOLJ	4239	100,0	270	6,4	3548	83,7	421	9,9
GALATI	2316	100,0	284	12,3	1986	85,8	46	2,0
GIURGIU	773	100,0	106	13,7	647	83,7	20	2,6
GORJ	3687	100,0	118	3,2	3534	95,9	35	0,9
HARGHITA	1433	100,0	156	10,9	1243	86,7	34	2,4
HUNEDOARA	1668	100,0	230	13,8	1367	82,0	71	4,3
IALOMITA	824	100,0	117	14,2	685	83,1	22	2,7
IASI	3080	100,0	501	16,3	2426	78,8	153	5,0
MARAMURES	2599	100,0	276	10,6	2268	87,3	55	2,1
MEHEDINTI	4553	100,0	119	2,6	4403	96,7	31	0,7
MURES	6616	100,0	280	4,2	6266	94,7	70	1,1
NEAMT	6736	100,0	242	3,6	6447	95,7	47	0,7
OLT	1463	100,0	147	10,0	1301	88,9	15	1,0
PRAHOVA	3192	100,0	425	13,3	2651	83,1	116	3,6
SALAJ	975	100,0	133	13,6	793	81,3	49	5,0
SATU MARE	1629	100,0	191	11,7	1391	85,4	47	2,9
SIBIU	3654	100,0	261	7,1	3301	90,3	92	2,5
SUCEAVA	1976	100,0	226	11,4	1717	86,9	33	1,7
TELEORMAN	697	100,0	124	17,8	559	80,2	14	2,0
TIMIS	3086	100,0	423	13,7	2581	83,6	82	2,7
TULCEA	4856	100,0	110	2,3	4728	97,4	18	0,4
VASLUI	1556	100,0	133	8,5	1412	90,7	11	0,7
VALCEA	1319	100,0	172	13,0	1045	79,2	102	7,7
VRANCEA	1217	100,0	127	10,4	1048	86,1	42	3,5
MUN. BUCURESTI	21957	100,0	2275	10,4	19399	88,3	283	1,3
ILFOV	2792	100,0	415	14,9	2336	83,7	41	1,5

Table no.7

Number of incorporations in the trade registers by counties and capital sources in the month of September 2008

County	Total		out of which:						Rnking by: *	
			Private capital				State majority capital			Mixed capital (state+private)
			out of which:				out of which:			
			PF	Companies	SC	APJ	RA	Companies		Companies
No.	%	No.	No.	No.		No.	No.	No.		
0	1	2	3	4	5		6	7	8	9
Total ROMÂNIA	11725	100,0	3185	8515	4	17			4	X
ALBA	204	1,7	63	141						22
ARAD	267	2,3	90	177						16
ARGES	270	2,3	71	197		2				14
BACAU	292	2,5	113	176	3					10
BIHOR	371	3,2	130	239		2				9
BISTRITA-NASAUD	140	1,2	28	112						30
BOTOSANI	167	1,4	67	96		4				26
BRASOV	392	3,3	118	273		1				8
BRAILA	144	1,2	54	90						29
BUZAU	182	1,6	54	127		1				24
CARAS-SEVERIN	117	1,0	30	87						38
CALARASI	120	1,0	43	77						35
CLUJ	450	3,8	133	317						4
CONSTANTA	454	3,9	81	373						3
COVASNA	84	0,7	39	45						42
DAMBOVITA	210	1,8	67	142		1				21
DOLJ	270	2,3	59	211						15
GALATI	284	2,4	75	209						11
GIURGIU	106	0,9	17	89						41
GORJ	118	1,0	32	86						37
HARGHITA	156	1,3	73	83						27
HUNEDOARA	230	2,0	77	151		1			1	19
IALOMITA	117	1,0	32	85						39
IASI	501	4,3	185	316						2
MARAMURES	276	2,4	83	193						13
MEHEDINTI	119	1,0	51	67		1				36
MURES	280	2,4	102	178						12
NEAMT	242	2,1	69	173						18
OLT	147	1,3	44	102	1					28
PRAHOVA	425	3,6	163	262						5
SALAJ	133	1,1	48	85						31
SATU MARE	191	1,6	55	135					1	23
SIBIU	261	2,2	88	172		1				17
SUCEAVA	226	1,9	81	145						20
TELEORMAN	124	1,1	31	93						34
TIMIS	423	3,6	80	343						6
TULCEA	110	0,9	30	80						40
VASLUI	133	1,1	49	83					1	32
VALCEA	172	1,5	77	94		1				25
VRANCEA	127	1,1	32	94		1				33
MUN. BUCURESTI	2275	19,4	324	1950					1	1
ILFOV	415	3,5	47	367		1				7

Table no.8

Number of incorporations in the trade registers by counties and business categories in the month of September 2008

County	Total		out of which:						APJ	
			PF	companies: 8519				RA		SC
	SNC	SCS		SRL	SA					
	No.	%	No.	No.	No.	No.	No.	No.		
0	1	2	3	4	5	6	7	8	9	
Total ROMÂNIA	11725	100,0	3185	1	1	8443	73		4	17
ALBA	204	1,7	63			140	1			
ARAD	267	2,3	90			175	2			
ARGES	270	2,3	71			197				2
BACAU	292	2,5	113			176			3	
BIHOR	371	3,2	130			239				2
BISTRITA-NASAUD	140	1,2	28			112				
BOTOSANI	167	1,4	67			96				4
BRASOV	392	3,3	118			272	1			1
BRAILA	144	1,2	54			89	1			
BUZAU	182	1,6	54			126	1			1
CARAS-SEVERIN	117	1,0	30			87				
CALARASI	120	1,0	43			76	1			
CLUJ	450	3,8	133		1	309	7			
CONSTANTA	454	3,9	81			372	1			
COVASNA	84	0,7	39			45				
DAMBOVITA	210	1,8	67			142				1
DOLJ	270	2,3	59			210	1			
GALATI	284	2,4	75			205	4			
GIURGIU	106	0,9	17			88	1			
GORJ	118	1,0	32			85	1			
HARGHITA	156	1,3	73			82	1			
HUNEDOARA	230	2,0	77			150	2			1
IALOMITA	117	1,0	32	1		83	1			
IASI	501	4,3	185			315	1			
MARAMURES	276	2,4	83			192	1			
MEHEDINTI	119	1,0	51			66	1			1
MURES	280	2,4	102			177	1			
NEAMT	242	2,1	69			173				
OLT	147	1,3	44			102			1	
PRAHOVA	425	3,6	163			260	2			
SALAJ	133	1,1	48			85				
SATU MARE	191	1,6	55			135				
SIBIU	261	2,2	88			171	1			1
SUCEAVA	226	1,9	81			145				
TELEORMAN	124	1,1	31			92	1			
TIMIS	423	3,6	80			342	1			
TULCEA	110	0,9	30			80				
VASLUI	133	1,1	49			83	1			
VALCEA	172	1,5	77			92	2			1
VRANCEA	127	1,1	32			92	2			1
MUN. BUCURESTI	2275	19,4	324			1923	28			
ILFOV	415	3,5	47			362	5			1

Table no. 9

Number of incorporations in the trade registers by domains of activity and business categories in the month of September 2008

CAEN segment	Field of activity	Total		out of which:								
				PF	companies: 8519				RA	SC	APJ	
					SNC	SCS	SRL	SA				
					No.	No.	No.	No.				
0	1	2	3	4	5	6	7	8	9	10	11	
	Total ROMÂNIA	11725	100,0	3185	1	1	8443	73			4	17
1	Agriculture, hunting and related service activities	223	1,9	86	1		131	2				3
2	Forestry and logging	49	0,4	5			44					
3	Fishing and aquaculture	22	0,2	18			4					
5	Mining of hard and brown coal	1	0,0				1					
6	Extraction of crude petroleum and natural gas											
7	Mining of metal ores	1	0,0				1					
8	Other mining and quarrying	20	0,2				17	2				1
9	Mining support service activities	3	0,0				3					
10	Manufacture of food products	77	0,7	15			59	3				
11	Manufacture of beverages	29	0,2	25			4					
12	Manufacture of tobacco products											
13	Manufacture of textiles	15	0,1	3			12					
14	Manufacture of wearing apparel	63	0,5	21			42					
15	Tanning and dressing of leather; manufacture of luggage, handbags, saddlery, harness and footwear; dressing and dyeing of fur	17	0,1	3			14					
16	Manufacture of wood and of products of wood and cork, except furniture; manufacture of articles of straw and plaiting materials	81	0,7	19			62					
17	Manufacture of paper and paper products	10	0,1	2			8					
18	Printing and reproduction of recorded media	20	0,2	3			17					
19	Manufacture of coke and refined petroleum products	1	0,0				1					
20	Manufacture of chemicals and chemical products	9	0,1				9					
21	Manufacture of basic pharmaceutical products and pharmaceutical preparations	2	0,0				2					
22	Manufacture of rubber and plastic products	53	0,5	9			44					
23	Manufacture of other non-metallic mineral products	36	0,3	9			26	1				
24	Manufacture of basic metals	1	0,0				1					
25	Manufacture of fabricated metal products, except machinery and equipment	111	0,9	23			87	1				
26	Manufacture of computer, electronic and optical products	6	0,1				6					
27	Manufacture of electrical equipment	2	0,0				2					
28	Manufacture of machinery and equipment n.e.c.	8	0,1	1			7					
29	Manufacture of motor vehicles, trailers and semi-trailers	2	0,0				2					
30	Manufacture of other transport equipment	11	0,1				10	1				
31	Manufacture of furniture	57	0,5	7			49	1				
32	Other manufacturing	40	0,3	17			23					
33	Repair and installation of machinery and equipment	45	0,4	6			38	1				
35	Electricity, gas, steam and air conditioning supply	43	0,4				42	1				
36	Water collection, treatment and supply	2	0,0				1	1				
37	Sewerage	5	0,0				5					
38	Waste collection, treatment and disposal activities; materials recovery	60	0,5	9			49	2				
39	Remediation activities and other waste management services											
41	Construction of buildings	1119	9,5	81			1036	1				1
42	Civil engineering	73	0,6	6			67					
43	Specialised construction activities	646	5,5	157			488	1				
45	Wholesale and retail trade and repair of motor vehicles and motorcycles	330	2,8	56			274					
46	Wholesale trade, except of motor vehicles and motorcycles	1217	10,4	204			1004	9				
47	Retail trade, except of motor vehicles and motorcycles	1957	16,7	628		1	1327	1				
49	Land transport and transport via pipelines	615	5,2	128			487					
50	Water transport	2	0,0				2					

Table no. 10

Number of incorporated trading companies and the value of the subscribed share capital, by counties, in the month of September 2008

County	Total registered companies		Subscribed capital		Average subscribed capital on company
	No.	%	thousand Lei	%	thousand Lei
0	1	2	3	4	5
Total ROMÂNIA	8519	100,0	196139,5	100,0	23,1
ALBA	141	1,7	44,6	0,0	0,3
ARAD	177	2,1	106,3	0,1	0,6
ARGES	197	2,3	116,9	0,1	0,6
BACAU	176	2,1	860,4	0,4	4,9
BIHOR	239	2,8	641,0	0,3	2,7
BISTRITA-NASAUD	112	1,3	73,3	0,0	0,7
BOTOSANI	96	1,1	146,1	0,1	1,5
BRASOV	273	3,2	4706,1	2,4	17,3
BRAILA	90	1,1	20,8	0,0	0,2
BUZAU	127	1,5	955,0	0,5	7,6
CARAS-SEVERIN	87	1,0	39,8	0,0	0,5
CALARASI	77	0,9	2737,8	1,4	36,0
CLUJ	317	3,7	5969,3	3,0	19,0
CONSTANTA	373	4,4	2048,3	1,0	5,5
COVASNA	45	0,5	52,0	0,0	1,2
DAMBOVITA	142	1,7	56,1	0,0	0,4
DOLJ	211	2,5	2167,9	1,1	10,3
GALATI	209	2,5	13060,8	6,7	63,1
GIURGIU	89	1,0	592,9	0,3	6,7
GORJ	86	1,0	170,7	0,1	2,0
HARGHITA	83	1,0	2279,4	1,2	27,5
HUNEDOARA	152	1,8	523,2	0,3	3,4
IALOMITA	85	1,0	378,1	0,2	4,5
IASI	316	3,7	598,9	0,3	1,9
MARAMURES	193	2,3	112,4	0,1	0,6
MEHEDINTI	67	0,8	13,9	***	0,2
MURES	178	2,1	1601,4	0,8	9,1
NEAMT	173	2,0	46,0	0,0	0,3
OLT	102	1,2	24,6	0,0	0,2
PRAHOVA	262	3,1	62586,9	31,9	240,7
SALAJ	85	1,0	2591,3	1,3	30,5
SATU MARE	136	1,6	1856,8	0,9	13,8
SIBIU	172	2,0	3231,1	1,6	18,9
SUCEAVA	145	1,7	816,1	0,4	5,6
TELEORMAN	93	1,1	1394,0	0,7	15,0
TIMIS	343	4,0	713,6	0,4	2,1
TULCEA	80	0,9	23,3	0,0	0,3
VASLUI	84	1,0	11692,2	6,0	139,2
VALCEA	94	1,1	2101,6	1,1	22,4
VRANCEA	94	1,1	76,6	0,0	0,8
MUN. BUCURESTI	1951	22,9	52859,1	26,9	27,3
ILFOV	367	4,3	16053,1	8,2	43,9

Table no. 11

Number of incorporated trading companies and the value of the subscribed share capital by legal forms, in the month of September 2008

Company type	Total registered companies		Subscribed capital		Average subscribed capital on company
	No.	%	thousand Lei	%	thousand Lei
0	1	2	3	4	5
Total ROMÂNIA	8519	100,0	196139,5	100,0	23,1
SNC	1	0,0	0,2	***	0,2
SCS	1	0,0	650,0	0,3	650,0
SA	73	0,9	49653,8	25,3	1273,2
SRL	8443	99,1	145835,4	74,4	17,3
SCA	1				

Note: The average does not include filials because according to the Law no.31/1990 they are not juridical persons

*** Less than 0,01%

Diagram no.5

