



MINISTRY OF JUSTICE

THE NATIONAL TRADE REGISTER OFFICE

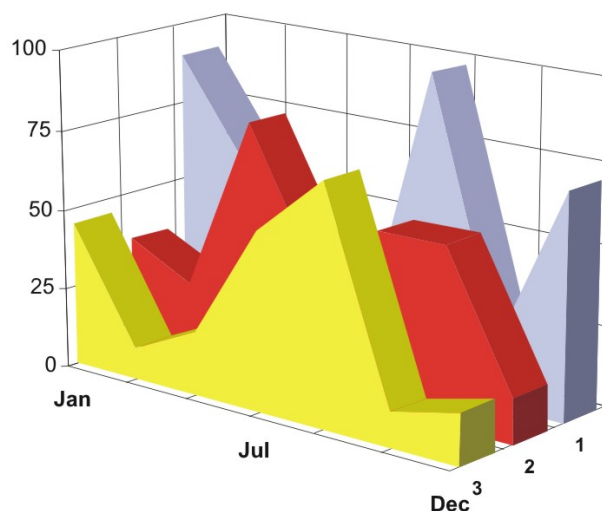
București, Bd. Unirii nr. 74, Bl. J3b, tronson II+III, sector 3; Telefon: +40 21 316.08.04, 316.08.10; Fax: +40 21 316.08.03; Cod poștal: 030837
Website: www.onrc.ro; E-mail: onrc@onrc.ro; Cod identificare Fiscală: 14942091

OPERATIONS IN THE CENTRAL TRADE REGISTER

STATISTIC SYNTHESIS

OF

**RECORDS IN THE CENTRAL TRADE REGISTER
- the 31st of August 2008 - provisional data -**



- ISSUE No. 201 -

**MINISTRY OF JUSTICE
THE NATIONAL TRADE REGISTER OFFICE**

- Operations such as incorporation of trading companies, submission of changes, and strike-off are carried out based on Law No.26/1990, as republished, Law No.31/1990, as republished and on the Methodological Norms no. P/608/1998.

- This work reflects the evolution of the operations with the Trade Register Office attached to Bucharest Law Court and the Trade Register Offices attached to County Law Courts.

- The data contained in the Central Trade Register refer to operations for which law sets out the obligation of being registered in the trade registers kept by the 42 trade register offices attached to law courts.

• The content of this publication shall not be reproduced, partly or entirely, in original or modified form, and shall not be stored in a recovery system and shall not be transmitted in any form or by any means without prior written authorization of the Ministry of Justice – The National Trade Register Office.

• The content of this publication August be used in articles, studies, books, as supporting or explanatory data only by clearly and accurately indicating the source.

CONTENTS

Page

1	Definitions	1
2.1	Data related to the period December 1990 –August 2008	3
<hr/>		
	Table no. 1 – Operations performed in the trade registers by categories of registration during December 1990 –August 2008, total by country and by counties, shares of counties in the total by country	3
	Table no. 2 – Operations performed in the trade registers by categories of registration during December 1990 –August 2008, total by country and counties, share of categories of operations in the total of each county	4
	Table no. 3 – Number and structure of incorporations in the trade registers during December 1990-August 2008	5
	Chart no. 1 – Structure by years of incorporations in the trade register	
	Table no. 4 – Number of incorporations in the trade registers by counties and capital sources during December 1990 - August 2008	6
	Table no. 5 – Number of incorporations in the trade registers by counties and business categories during December 1990 –August 2008	7
<hr/>		
2.2	Data related to August 2008	8
<hr/>		
	Table no. 6 – Operations performed in the trade registers by counties and categories of registrations in the month of August 2008	8
	Table no. 7 – Number of incorporations in the trade registers by counties and capital sources in the month of August 2008	9
	Table no. 8 – Number of incorporations in the trade registers by counties and business categories in the month of August 2008	10
	Table no. 9 –Number of incorporations in the trade registers by domains of activity and business categories in the month of August 2008	11-12
	Table no. 10 – Number of incorporated trading companies and the value of subscribed share capital, by counties, in the month of August 2008	13
	Table no. 11– Number of incorporated trading companies and the value of subscribed share capital by legal forms, in the month of August 2008	14
	Chart no. 5 – Average value of subscribed share capital by types of trading companies in the month of August 2008	14

Definitions

The Trade Register Office was established based on Law No. 26/1990, as republished and subsequently amended and supplemented, operates as an active institution since December 1990 and is twofold structured:

- at national level, represented by the National Trade Register Office organized under the authority of the Ministry of Justice
- at local level, represented by the 42 Trade Register Offices attached to Law Courts, organized under the subordination of the National Trade Register Office

Categories of persons liable to registration in the trade register:

- natural persons: authorized natural persons, individual enterprises and family enterprises currently carrying on trading activities;
 - legal persons represented by: Trading Companies, National Societies and Companies, National R&D Institutes, Autonomous Administrations, Co-operative Societies, Agricultural Co-operatives, Co-operative Organizations, Economic Interest Groupings, European Economic Interest Groupings, European Societies, European Co-operative Societies, branches of trading companies with legal establishment, operation and incorporation regime of trading company legal form under which they were incorporated.
- **Terms used in tables and charts**
- **Number of companies**, depending on the table, represents the number of trading companies incorporated during the reference period, the number of trading companies struck-off from the trade register. The following forms of organization are included: limited liability companies, joint-stock companies, limited partnerships by share, limited partnerships, general partnerships, and branches thereof.
 - **Value of subscribed share capital:**
 - **total, expressed in national currency:** the share capital value resulted by adding up the subscribed values (in cash and in kind) in national currency (lei)

➤ **Regions of economic development:**

<i>North-East:</i>	Suceava, Botoșani, Neamț, Iași, Bacău, Vaslui.
<i>South-East:</i>	Vrancea, Galați, Buzău, Brăila, Tulcea, Constanța.
<i>South-Muntenia:</i>	Argeș, Dâmbovița, Prahova, Teleorman, Giurgiu, Călărași, Ialomița.
<i>South-West Oltenia:</i>	Gorj, Vâlcea, Dolj, Mehedinți, Olt.
<i>West:</i>	Arad, Caraș-Severin, Hunedoara, Timiș.
<i>North-West:</i>	Bihor, Bistrița, Cluj, Satu Mare, Sălaj, Maramureș.
<i>Center:</i>	Alba, Brașov, Covasna, Harghita, Mureș, Sibiu.
<i>Bucharest-Ilfov:</i>	București, Ilfov.

NACE Code – The classification of economic activities in the national economy was approved by GO No. 656/1997, amended by Order No 601/2002 and Order no. 337/2007 of the President of the National Institute of Statistics, and complies with the international classification used in statistic reports and official documents. The activities are ranked by the harmonization principle, by sections, divisions, groups and classes.

Abbreviations

- **PF** - Natural Person; the following forms of organization are included in this category: natural persons and family associations registered until 25.04.2008, authorized natural persons, individual enterprises and family enterprises.
- **SNC** - General Partnership
- **SCS** - Limited Partnership
- **SCA** - Limited Partnership by Share
- **SA** - Joint-Stock Company
- **SRL** - Limited Liability Company
- **RA** - Autonomous Administration
- **APJ** - Other legal persons having the obligation to register in the trade register: National R&D Institutes, Economic Interest Groupings, European Economic Interest Groupings, European Societies, European Co-operative Societies, Agricultural Co-operatives, Co-operative Organizations.

Sources of Information:

The integrated IT system of the trade register is designed by The National Trade Register Office in compliance with the provisions of the related legislation in force. The source of information consists of the trade registers organized in computerized system, kept by the trade register offices attached to law courts.

Table no. 1

**Operations performed in the trade registers by categories of registration during
December 1990 – August 2008, total by country and by counties, share of counties
in the total by country**

Counties	Total of registered operations		out of which :					
			Registered companies		Changes in statutory documents		Strike off companies	
	No.	%	No.	%	No.	%	No.	%
0	1	2	3	4	5	6	11	12
Total ROMÂNIA	10362525	100,0	1804389	100,0	8012448	100,0	545688	100,0
ALBA	134235	1,3	28522	1,6	100142	1,2	5571	1,0
ARAD	238664	2,3	44149	2,4	183072	2,3	11443	2,1
ARGES	256262	2,5	46388	2,6	199716	2,5	10158	1,9
BACAU	233999	2,3	45133	2,5	176508	2,2	12358	2,3
BIHOR	295729	2,9	55255	3,1	224748	2,8	15726	2,9
BISTRITA-NASAUD	123278	1,2	22038	1,2	94457	1,2	6783	1,2
BOTOSANI	96714	0,9	22148	1,2	68443	0,9	6123	1,1
BRASOV	413253	4,0	56611	3,1	343742	4,3	12900	2,4
BRAILA	140707	1,4	24719	1,4	111805	1,4	4183	0,8
BUZAU	183673	1,8	32936	1,8	139403	1,7	11334	2,1
CARAS-SEVERIN	126462	1,2	22082	1,2	95795	1,2	8585	1,6
CALARASI	87851	0,8	18021	1,0	64854	0,8	4976	0,9
CLUJ	456358	4,4	84042	4,7	356584	4,5	15732	2,9
CONSTANTA	448534	4,3	75425	4,2	346249	4,3	26860	4,9
COVASNA	91761	0,9	15465	0,9	71521	0,9	4775	0,9
DAMBOVITA	151362	1,5	33435	1,9	103938	1,3	13989	2,6
DOLJ	278572	2,7	47257	2,6	218163	2,7	13152	2,4
GALATI	275599	2,7	42721	2,4	218377	2,7	14501	2,7
GIURGIU	81858	0,8	14790	0,8	61831	0,8	5237	1,0
GORJ	157430	1,5	21348	1,2	129286	1,6	6796	1,2
HARGHITA	150204	1,4	27954	1,5	116806	1,5	5444	1,0
HUNEDOARA	201653	1,9	36542	2,0	151742	1,9	13369	2,4
IALOMITA	100561	1,0	16791	0,9	77545	1,0	6225	1,1
IASI	344598	3,3	57237	3,2	274174	3,4	13187	2,4
MARAMURES	211958	2,0	45853	2,5	154741	1,9	11364	2,1
MEHEDINTI	106658	1,0	20110	1,1	78360	1,0	8188	1,5
MURES	294937	2,8	45452	2,5	234600	2,9	14885	2,7
NEAMT	215404	2,1	39296	2,2	161152	2,0	14956	2,7
OLT	127556	1,2	25210	1,4	92875	1,2	9471	1,7
PRAHOVA	353761	3,4	59970	3,3	277241	3,5	16550	3,0
SALAJ	87527	0,8	17762	1,0	64530	0,8	5235	1,0
SATU MARE	164295	1,6	30710	1,7	122740	1,5	10845	2,0
SIBIU	226102	2,2	35108	1,9	181822	2,3	9172	1,7
SUCEAVA	254573	2,5	45531	2,5	191466	2,4	17576	3,2
TELEORMAN	113816	1,1	20251	1,1	88586	1,1	4979	0,9
TIMIS	355144	3,4	63907	3,5	273573	3,4	17664	3,2
TULCEA	107937	1,0	18430	1,0	84057	1,0	5450	1,0
VASLUI	120593	1,2	22641	1,3	89029	1,1	8923	1,6
VALCEA	157402	1,5	29451	1,6	118681	1,5	9270	1,7
VRANCEA	126085	1,2	22096	1,2	99060	1,2	4929	0,9
MUN. BUCURESTI	2113870	20,4	340461	18,9	1653661	20,6	119748	21,9
ILFOV	155590	1,5	31141	1,7	117373	1,5	7076	1,3

Table no. 2

Operations performed in the trade registers during December 1990 – August 2008, total by country and counties, share of categories of operations in the total of each county

Counties	Total of registered operations		out of which :					
			Registered companies		Changes in statutory documents		Strike off companies	
	No.	%	No.	%	No.	%	No.	%
0	1	2	3	4	5	6	11	12
Total ROMÂNIA	10362525	100,0	1804389	17,4	8012448	77,3	545688	5,3
ALBA	134235	100,0	28522	21,2	100142	74,6	5571	4,2
ARAD	238664	100,0	44149	18,5	183072	76,7	11443	4,8
ARGES	256262	100,0	46388	18,1	199716	77,9	10158	4,0
BACAU	233999	100,0	45133	19,3	176508	75,4	12358	5,3
BIHOR	295729	100,0	55255	18,7	224748	76,0	15726	5,3
BISTRITA-NASAUD	123278	100,0	22038	17,9	94457	76,6	6783	5,5
BOTOSANI	96714	100,0	22148	22,9	68443	70,8	6123	6,3
BRASOV	413253	100,0	56611	13,7	343742	83,2	12900	3,1
BRAILA	140707	100,0	24719	17,6	111805	79,5	4183	3,0
BUZAU	183673	100,0	32936	17,9	139403	75,9	11334	6,2
CARAS-SEVERIN	126462	100,0	22082	17,5	95795	75,8	8585	6,8
CALARASI	87851	100,0	18021	20,5	64854	73,8	4976	5,7
CLUJ	456358	100,0	84042	18,4	356584	78,1	15732	3,4
CONSTANTA	448534	100,0	75425	16,8	346249	77,2	26860	6,0
COVASNA	91761	100,0	15465	16,9	71521	77,9	4775	5,2
DAMBOVITA	151362	100,0	33435	22,1	103938	68,7	13989	9,2
DOLJ	278572	100,0	47257	17,0	218163	78,3	13152	4,7
GALATI	275599	100,0	42721	15,5	218377	79,2	14501	5,3
GIURGIU	81858	100,0	14790	18,1	61831	75,5	5237	6,4
GORJ	157430	100,0	21348	13,6	129286	82,1	6796	4,3
HARGHITA	150204	100,0	27954	18,6	116806	77,8	5444	3,6
HUNEDOARA	201653	100,0	36542	18,1	151742	75,2	13369	6,6
IALOMITA	100561	100,0	16791	16,7	77545	77,1	6225	6,2
IASI	344598	100,0	57237	16,6	274174	79,6	13187	3,8
MARAMURES	211958	100,0	45853	21,6	154741	73,0	11364	5,4
MEHEDINTI	106658	100,0	20110	18,9	78360	73,5	8188	7,7
MURES	294937	100,0	45452	15,4	234600	79,5	14885	5,0
NEAMT	215404	100,0	39296	18,2	161152	74,8	14956	6,9
OLT	127556	100,0	25210	19,8	92875	72,8	9471	7,4
PRAHOVA	353761	100,0	59970	17,0	277241	78,4	16550	4,7
SALAJ	87527	100,0	17762	20,3	64530	73,7	5235	6,0
SATU MARE	164295	100,0	30710	18,7	122740	74,7	10845	6,6
SIBIU	226102	100,0	35108	15,5	181822	80,4	9172	4,1
SUCEAVA	254573	100,0	45531	17,9	191466	75,2	17576	6,9
TELEORMAN	113816	100,0	20251	17,8	88586	77,8	4979	4,4
TIMIS	355144	100,0	63907	18,0	273573	77,0	17664	5,0
TULCEA	107937	100,0	18430	17,1	84057	77,9	5450	5,0
VASLUI	120593	100,0	22641	18,8	89029	73,8	8923	7,4
VALCEA	157402	100,0	29451	18,7	118681	75,4	9270	5,9
VRANCEA	126085	100,0	22096	17,5	99060	78,6	4929	3,9
MUN. BUCURESTI	2113870	100,0	340461	16,1	1653661	78,2	119748	5,7
ILFOV	155590	100,0	31141	20,0	117373	75,4	7076	4,5

Table no.3

Number and structure of incorporations in the trade registers during December 1990- July 2008

Period (year, month)	Registered companies		Percentage	
	No.		%	%
0	1	2	3	
Total, 30 April 2008, out of which	1804389	100,00		
Year 1990	81	0,00		
Year 1991	95840	5,31		
Year 1992	137456	7,62		
Year 1993	117078	6,49		
Year 1994	137445	7,62		
Year 1995	65479	3,63		
Year 1996	62089	3,44		
Year 1997	55663	3,08		
Year 1998	63878	3,54		
Year 1999	57197	3,17		
Year 2000	57291	3,18		
Year 2001	61265	3,40		
Year 2002	84780	4,70		
Year 2003	123582	6,85		
Year 2004	144284	8,00		
Year 2005	159464	8,84		
Year 2006	135371	7,50		
Year 2007	144728	8,02		
Year 2008 (I - XII) out of which :	101418			73,0
January	9833			9,7
February	15237			10,5
March	15253			10,5
April	13379			9,2
May	12489			8,6
June	11898			8,2
July	12772			8,8
August	10557			7,3

Note: Column 2 reveals the annual structure of incorporations; column 3 reveals the structure by months during the current year.

Diagram no.1

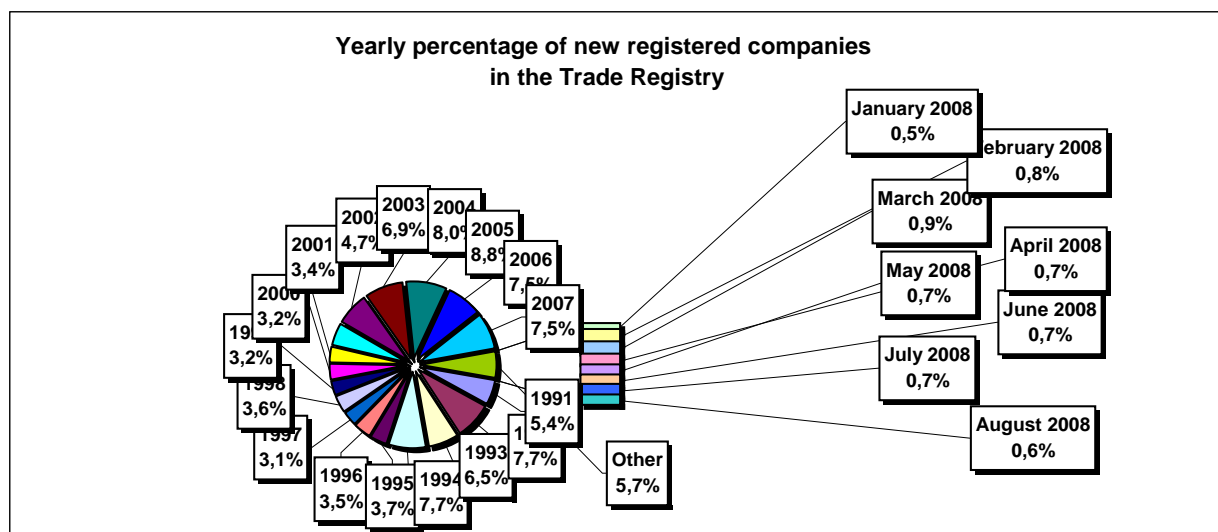


Table no. 4

**Number of incorporations in the trade registers by counties and capital sources during
December 1990 - August 2008**

Counties	Total		out of which:						Ranking by: *	
			Private capital				State majority capital			Mixed capital (state+private)
			out of which:				out of which:			
			PF	Companies	SC	APJ	RA	Companies		Companies
No.	%	No.	No.	No.	No.	No.	No.	No.		
0	1	2	3	4	5	6	6	7	8	9
Total ROMÂNIA	1804389	100,0	470203	1314413	2024	5409	1352	2376	8612	X
ALBA	28522	1,6	9902	18185	36	144	38	47	170	25
ARAD	44150	2,4	16621	26910	59	157	27	41	335	15
ARGES	46388	2,6	14799	31162	48	168	29	30	152	10
BACAU	45133	2,5	14972	29556	144	158	35	42	226	14
BIHOR	55255	3,1	13601	41036	63	146	39	62	308	8
BISTRITA-NASAUD	22038	1,2	7679	14058	46	98	19	29	109	33
BOTOSANI	22148	1,2	10277	11394	40	124	21	173	119	30
BRASOV	56611	3,1	12251	43880	58	116	47	87	172	7
BRAILA	24719	1,4	6471	17870	42	96	28	45	167	28
BUZAU	32936	1,8	9733	22814	46	142	28	42	131	21
CARAS-SEVERIN	22082	1,2	7589	14113	41	102	35	65	137	32
CALARASI	18021	1,0	5336	12387	22	86	18	77	95	38
CLUJ	84042	4,7	21657	61817	62	150	52	41	263	2
CONSTANTA	75425	4,2	14840	59654	83	203	51	51	543	3
COVASNA	15465	0,9	5471	9720	41	68	24	32	109	41
DAMBOVITA	33435	1,9	14909	18103	32	134	29	75	153	20
DOLJ	47257	2,6	9937	36818	39	162	40	58	203	9
GALATI	42721	2,4	9046	33281	35	135	30	51	143	16
GIURGIU	14790	0,8	3531	10923	15	80	22	109	110	42
GORJ	21348	1,2	5206	15699	26	184	50	83	100	34
HARGHITA	27954	1,5	11486	16021	64	87	23	43	230	26
HUNEDOARA	36542	2,0	9567	26446	33	81	40	92	283	18
IALOMITA	16791	0,9	6356	10182	27	74	15	46	91	40
IASI	57237	3,2	16243	40295	87	164	34	70	344	6
MARAMURES	45853	2,5	18107	27380	43	124	37	39	123	11
MEHEDINTI	20110	1,1	6540	13325	19	82	19	27	98	36
MURES	45452	2,5	16850	28146	68	156	30	34	168	13
NEAMT	39296	2,2	14459	24384	66	162	29	30	166	17
OLT	25210	1,4	9747	15063	26	161	26	64	123	27
PRAHOVA	59970	3,3	18512	40820	67	177	50	72	272	5
SALAJ	17762	1,0	6958	10545	41	107	19	28	64	39
SATU MARE	30710	1,7	10235	20151	41	88	19	42	134	23
SIBIU	35108	1,9	8842	25810	37	119	34	108	158	19
SUCEAVA	45531	2,5	21467	23474	73	203	30	64	220	12
TELEORMAN	20251	1,1	6979	12839	33	152	21	45	182	35
TIMIS	63907	3,5	10577	52666	69	140	38	69	348	4
TULCEA	18430	1,0	6505	11551	36	66	18	42	212	37
VASLUI	22641	1,3	10765	11553	22	109	16	41	135	29
VALCEA	29451	1,6	11526	17502	64	168	40	37	114	24
VRANCEA	22096	1,2	6660	15138	35	106	16	27	114	31
MUN. BUCURESTI	340460	18,9	24205	314716	64	138	115	103	1119	1
ILFOV	31141	1,7	3789	27026	31	92	21	13	169	22

*) The total number of incorporations (col 1)

Table no. 5

**Number of incorporations in the trade registers by counties and business categories
during December 1990 – August 2008**

County	Total		out of which:							
			PF	companies: 1325401				RA	SC	APJ
				SNC	SCS	SRL	SA			
				No.	No.	No.	No.			
0	1	2	3	4	5	6	7	8	9	10
Total ROMÂNIA	1804389	100,0	470203	32668	1593	1257995	33139	1352	2024	5409
ALBA	28522	1,6	9902	890	11	16930	571	38	36	144
ARAD	44149	2,4	16621	53	12	26530	689	27	59	157
ARGES	46388	2,6	14799	107	15	30387	835	29	48	168
BACAU	45133	2,5	14972	1299	4	27782	738	35	144	158
BIHOR	55255	3,1	13601	126	47	40317	916	39	63	146
BISTRITA-NASAUD	22038	1,2	7679	146	21	13610	419	19	46	98
BOTOSANI	22148	1,2	10277	468	1	10759	458	21	40	124
BRASOV	56611	3,1	12251	239	20	43007	873	47	58	116
BRAILA	24719	1,4	6471	376	12	17170	524	28	42	96
BUZAU	32936	1,8	9733	3747	46	18610	584	28	46	142
CARAS-SEVERIN	22082	1,2	7589	117	9	13716	473	35	41	102
CALARASI	18021	1,0	5336	609	3	11588	359	18	22	86
CLUJ	84042	4,7	21657	2112	20	58672	1317	52	62	150
CONSTANTA	75425	4,2	14840	311	23	58410	1504	51	83	203
COVASNA	15465	0,9	5471	148	4	9407	302	24	41	68
DAMBOVITA	33435	1,9	14909	60	8	17767	496	29	32	134
DOLJ	47257	2,6	9937	1560	8	34614	897	40	39	162
GALATI	42721	2,4	9046	1574	6	31042	853	30	35	135
GIURGIU	14790	0,8	3531	35	8	10771	328	22	15	80
GORJ	21348	1,2	5206	29	1	15354	498	50	26	184
HARGHITA	27954	1,5	11486	62	7	15732	493	23	64	87
HUNEDOARA	36542	2,0	9567	1166	98	24877	680	40	33	81
IALOMITA	16791	0,9	6356	266	11	9690	352	15	27	74
IASI	57237	3,2	16243	507	111	39069	1020	34	87	164
MARAMURES	45853	2,5	18107	1927	23	24989	602	37	43	124
MEHEDINTI	20110	1,1	6540	427	3	12685	335	19	19	82
MURES	45452	2,5	16850	37	34	27598	679	30	68	156
NEAMT	39296	2,2	14459	3293	30	20579	678	29	66	162
OLT	25210	1,4	9747	1611	1	13141	497	26	26	161
PRAHOVA	59970	3,3	18512	3122	15	37112	915	50	67	177
SALAJ	17762	1,0	6958	600	4	9736	297	19	41	107
SATU MARE	30710	1,7	10235	283	9	19555	480	19	41	88
SIBIU	35108	1,9	8842	777	49	24582	668	34	37	119
SUCEAVA	45531	2,5	21467	438	8	22719	593	30	73	203
TELEORMAN	20251	1,1	6979	272	399	11970	425	21	33	152
TIMIS	63907	3,5	10577	615	30	51167	1271	38	69	140
TULCEA	18430	1,0	6505	1363	114	9845	483	18	36	66
VASLUI	22641	1,3	10765	90	13	11205	421	16	22	109
VALCEA	29451	1,6	11526	364	6	16787	496	40	64	168
VRANCEA	22096	1,2	6660	356	10	14454	459	16	35	106
MUN. BUCURESTI	340461	18,9	24205	1037	307	307561	7033	115	64	138
ILFOV	31141	1,7	3789	49	32	26499	628	21	31	92

Table no. 6

Operations performed in the trade registers by counties and categories of registration in the month of August 2008

County	Total of operations carried on		out of which:					
			New incorporations		Changes in statutory documents		Strike off companies	
	No.	%	No.	%	No.	%	No.	%
0	1	2	3	4	5	6	9	10
Total ROMÂNIA	101443	100,0	10557	10,4	87566	86,3	3320	3,3
ALBA	2168	100,0	194	8,9	1925	88,8	49	2,3
ARAD	3251	100,0	253	7,8	2651	81,5	347	10,7
ARGES	2801	100,0	285	10,2	2484	88,7	32	1,1
BACAU	2356	100,0	309	13,1	2005	85,1	42	1,8
BIHOR	1906	100,0	367	19,3	1473	77,3	66	3,5
BISTRITA-NASAUD	1353	100,0	145	10,7	1127	83,3	81	6,0
BOTOSANI	832	100,0	116	13,9	692	83,2	24	2,9
BRASOV	2382	100,0	365	15,3	1938	81,4	79	3,3
BRAILA	1142	100,0	167	14,6	941	82,4	34	3,0
BUZAU	1853	100,0	200	10,8	1597	86,2	56	3,0
CARAS-SEVERIN	1022	100,0	125	12,2	887	86,8	10	1,0
CALARASI	1516	100,0	97	6,4	1397	92,2	22	1,5
CLUJ	5871	100,0	464	7,9	4905	83,5	502	8,6
CONSTANTA	2438	100,0	449	18,4	1920	78,8	69	2,8
COVASNA	736	100,0	90	12,2	586	79,6	60	8,2
DAMBOVITA	1275	100,0	204	16,0	1019	79,9	52	4,1
DOLJ	3420	100,0	276	8,1	3122	91,3	22	0,6
GALATI	2915	100,0	206	7,1	2653	91,0	56	1,9
GIURGIU	1125	100,0	118	10,5	991	88,1	16	1,4
GORJ	1752	100,0	124	7,1	1599	91,3	29	1,7
HARGHITA	1200	100,0	151	12,6	1017	84,8	32	2,7
HUNEDOARA	2619	100,0	211	8,1	2229	85,1	179	6,8
IALOMITA	1132	100,0	119	10,5	974	86,0	39	3,4
IASI	2992	100,0	457	15,3	2404	80,3	131	4,4
MARAMURES	2366	100,0	253	10,7	2071	87,5	42	1,8
MEHEDINTI	927	100,0	114	12,3	785	84,7	28	3,0
MURES	2768	100,0	264	9,5	2443	88,3	61	2,2
NEAMT	1455	100,0	194	13,3	1225	84,2	36	2,5
OLT	944	100,0	135	14,3	791	83,8	18	1,9
PRAHOVA	3631	100,0	376	10,4	2970	81,8	285	7,8
SALAJ	927	100,0	117	12,6	778	83,9	32	3,5
SATU MARE	1685	100,0	176	10,4	1484	88,1	25	1,5
SIBIU	1985	100,0	242	12,2	1688	85,0	55	2,8
SUCEAVA	2090	100,0	215	10,3	1839	88,0	36	1,7
TELEORMAN	872	100,0	160	18,3	643	73,7	69	7,9
TIMIS	2839	100,0	391	13,8	2378	83,8	70	2,5
TULCEA	611	100,0	102	16,7	493	80,7	16	2,6
VASLUI	3145	100,0	147	4,7	2964	94,2	34	1,1
VALCEA	1368	100,0	164	12,0	1129	82,5	75	5,5
VRANCEA	1178	100,0	126	10,7	1021	86,7	31	2,6
MUN. BUCURESTI	20428	100,0	1580	7,7	18524	90,7	324	1,6
ILFOV	2167	100,0	309	14,3	1804	83,2	54	2,5

*) by effect of implementation of Law no. 314/2001, art.1 and art. 6

Table no.7

Number of incorporations in the trade registers by counties and capital sources in the month of August 2008

County	Total		out of which:						Rnking by: *	
			Private capital				State majority capital			Mixed capital (state+private)
			out of which:				out of which:			
			PF	Companies	SC	APJ	RA	Companies		Companies
No.	%	No.	No.	No.		No.	No.	No.		
0	1	2	3	4	5	6	7	8	9	
Total ROMÂNIA	10557	100,0	3021	7532		2	1		1	X
ALBA	194	1,8	63	131						22
ARAD	253	2,4	93	160						14
ARGES	285	2,7	81	204						11
BACAU	309	2,9	125	184						9
BIHOR	367	3,5	130	236			1			7
BISTRITA-NASAUD	145	1,4	43	102						30
BOTOSANI	116	1,1	41	74		1				38
BRASOV	365	3,5	100	265						8
BRAILA	167	1,6	57	110						25
BUZAU	200	1,9	37	163						21
CARAS-SEVERIN	125	1,2	40	85						33
CALARASI	97	0,9	31	66						41
CLUJ	464	4,4	113	351						2
CONSTANTA	449	4,3	80	369						4
COVASNA	90	0,9	37	53						42
DAMBOVITA	204	1,9	75	129						20
DOLJ	276	2,6	73	203						12
GALATI	206	2,0	44	162						19
GIURGIU	118	1,1	23	95						36
GORJ	124	1,2	39	85						34
HARGHITA	151	1,4	58	93						28
HUNEDOARA	211	2,0	46	165						18
IALOMITA	119	1,1	42	77						35
IASI	457	4,3	190	267						3
MARAMURES	253	2,4	60	193						15
MEHEDINTI	114	1,1	41	73						39
MURES	264	2,5	107	157						13
NEAMT	194	1,8	60	134						23
OLT	135	1,3	37	98						31
PRAHOVA	376	3,6	108	268						6
SALAJ	117	1,1	34	83						37
SATU MARE	176	1,7	59	117						24
SIBIU	242	2,3	77	165						16
SUCEAVA	215	2,0	65	150						17
TELEORMAN	160	1,5	61	99						27
TIMIS	391	3,7	87	304						5
TULCEA	102	1,0	29	73						40
VASLUI	147	1,4	68	79						29
VALCEA	164	1,6	86	77				1		26
VRANCEA	126	1,2	31	94		1				32
MUN. BUCURESTI	1580	15,0	320	1260						1
ILFOV	309	2,9	30	279						10

*) The total number of incorporations (col 1)

*** Less than 0,01%

Table no.8

Number of incorporations in the trade registers by counties and business categories in the month of August 2008

County	Total		out of which:							
			PF	companies: 7533				RA	SC	APJ
	SNC	SCS		SRL	SA					
	No.	%	No.	No.	No.	No.	No.	No.		
0	1	2	3	4	5	6	7	8	9	
Total ROMÂNIA	10557	100,0	3021		2	7469	62	1		2
ALBA	194	1,8	63			131				
ARAD	253	2,4	93			159	1			
ARGES	285	2,7	81			201	3			
BACAU	309	2,9	125			183	1			
BIHOR	367	3,5	130			235	1	1		
BISTRITA-NASAUD	145	1,4	43			102				
BOTOSANI	116	1,1	41			73	1			1
BRASOV	365	3,5	100			261	4			
BRAILA	167	1,6	57			109	1			
BUZAU	200	1,9	37			163				
CARAS-SEVERIN	125	1,2	40			84	1			
CALARASI	97	0,9	31			66				
CLUJ	464	4,4	113		1	350				
CONSTANTA	449	4,3	80			366	3			
COVASNA	90	0,9	37			52	1			
DAMBOVITA	204	1,9	75			128	1			
DOLJ	276	2,6	73			202	1			
GALATI	206	2,0	44			160	2			
GIURGIU	118	1,1	23			94	1			
GORJ	124	1,2	39			83	2			
HARGHITA	151	1,4	58			93				
HUNEDOARA	211	2,0	46			165				
IALOMITA	119	1,1	42			77				
IASI	457	4,3	190			267				
MARAMURES	253	2,4	60			191	2			
MEHEDINTI	114	1,1	41			73				
MURES	264	2,5	107			156	1			
NEAMT	194	1,8	60			132	2			
OLT	135	1,3	37			98				
PRAHOVA	376	3,6	108			267	1			
SALAJ	117	1,1	34			83				
SATU MARE	176	1,7	59			116	1			
SIBIU	242	2,3	77			164	1			
SUCEAVA	215	2,0	65			149	1			
TELEORMAN	160	1,5	61			99				
TIMIS	391	3,7	87			302	2			
TULCEA	102	1,0	29			72	1			
VASLUI	147	1,4	68			77	2			
VALCEA	164	1,6	86			77	1			
VRANCEA	126	1,2	31			91	3			1
MUN. BUCURESTI	1580	15,0	320		1	1241	18			
ILFOV	309	2,9	30			277	2			

Table no. 9

Number of incorporations in the trade registers by domains of activity and business categories in the month of August 2008

CAEN segment	Field of activity	Total		out of which:							
				PF	companies: 7533				RA	SC	APJ
		SNC	SCS		SRL	SA					
		No.	%	No.	No.	No.	No.	No.	No.	No.	
0	1	2	3	4	5	6	7	8	9	10	11
	Total ROMANIA	10557	100,0	3021		2	7469	62	1		2
1	Agriculture, hunting and related service activities	212	2,0	81			128	2			1
2	Forestry and logging	57	0,5	7			49		1		
3	Fishing and aquaculture	26	0,2	19			7				
5	Mining of hard and brown coal	1	0,0				1				
6	Extraction of crude petroleum and natural gas	1	0,0				1				
7	Mining of metal ores										
8	Other mining and quarrying	19	0,2				19				
9	Mining support service activities	3	0,0	2			1				
10	Manufacture of food products	82	0,8	21			60				1
11	Manufacture of beverages	30	0,3	25			5				
12	Manufacture of tobacco products										
13	Manufacture of textiles	13	0,1	2			11				
14	Manufacture of wearing apparel	45	0,4	12			33				
15	Tanning and dressing of leather; manufacture of luggage, handbags, saddlery, harness and footwear; dressing and dyeing of fur	13	0,1	2			11				
16	Manufacture of wood and of products of wood and cork, except furniture; manufacture of articles of straw and plaiting materials	92	0,9	36			56				
17	Manufacture of paper and paper products	10	0,1				10				
18	Printing and reproduction of recorded media	24	0,2	4			20				
19	Manufacture of coke and refined petroleum products	1	0,0				1				
20	Manufacture of chemicals and chemical products	7	0,1				7				
21	Manufacture of basic pharmaceutical products and pharmaceutical preparations										
22	Manufacture of rubber and plastic products	40	0,4	4			36				
23	Manufacture of other non-metallic mineral products	40	0,4	5			35				
24	Manufacture of basic metals	3	0,0	1			2				
25	Manufacture of fabricated metal products, except machinery and equipment	110	1,0	37			71	2			
26	Manufacture of computer, electronic and optical products	15	0,1	1			14				
27	Manufacture of electrical equipment	4	0,0				4				
28	Manufacture of machinery and equipment n.e.c.	9	0,1				9				
29	Manufacture of motor vehicles, trailers and semi-trailers	4	0,0				4				
30	Manufacture of other transport equipment	8	0,1				8				
31	Manufacture of furniture	34	0,3	7			27				
32	Other manufacturing	28	0,3	14			14				
33	Repair and installation of machinery and equipment	37	0,4	9			28				
35	Electricity, gas, steam and air conditioning supply	25	0,2	1			22	2			
36	Water collection, treatment and supply	3	0,0				3				
37	Sewerage	7	0,1				7				
38	Waste collection, treatment and disposal activities; materials recovery	47	0,4	2			45				
39	Remediation activities and other waste management services	3	0,0				3				
41	Construction of buildings	1200	11,4	80		1	1115	4			
42	Civil engineering	69	0,7	7			61	1			
43	Specialised construction activities	612	5,8	187			425				
45	Wholesale and retail trade and repair of motor vehicles and motorcycles	288	2,7	43			245				
46	Wholesale trade, except of motor vehicles and motorcycles	1010	9,6	211			796	3			
47	Retail trade, except of motor vehicles and motorcycles	1746	16,5	590			1155	1			
49	Land transport and transport via pipelines	587	5,6	125			462				
50	Water transport	1	0,0	1							

Table no. 10

Number of incorporated trading companies and the value of the subscribed share capital, by counties, in the month of August 2008

County	Total registered companies		Subscribed capital		Average subscribed capital on company
	No.	%	thousand Lei	%	thousand Lei
0	1	2	3	4	5
Total ROMÂNIA	7533	100,0	185870,7	100,0	24,8
ALBA	131	1,7	50,5	0,0	0,4
ARAD	160	2,1	1577,4	0,8	9,9
ARGES	204	2,7	266,6	0,1	1,3
BACAU	184	2,4	486,6	0,3	2,7
BIHOR	236	3,1	1298,0	0,7	5,5
BISTRITA-NASAUD	102	1,4	205,4	0,1	2,0
BOTOSANI	74	1,0	120,6	0,1	1,7
BRASOV	265	3,5	2829,6	1,5	10,8
BRAILA	110	1,5	148,8	0,1	1,4
BUZAU	163	2,2	375,1	0,2	2,3
CARAS-SEVERIN	85	1,1	87,3	0,0	1,0
CALARASI	66	0,9	41,1	0,0	0,6
CLUJ	351	4,7	1019,0	0,5	2,9
CONSTANTA	369	4,9	3242,9	1,7	8,8
COVASNA	53	0,7	203,5	0,1	3,9
DAMBOVITA	129	1,7	207,7	0,1	1,6
DOLJ	203	2,7	210,1	0,1	1,0
GALATI	162	2,2	1902,2	1,0	11,8
GIURGIU	95	1,3	69,7	0,0	0,7
GORJ	85	1,1	183,4	0,1	2,2
HARGHITA	93	1,2	394,0	0,2	4,2
HUNEDOARA	165	2,2	66,2	0,0	0,4
IALOMITA	77	1,0	61,4	0,0	0,8
IASI	267	3,5	637,1	0,3	2,4
MARAMURES	193	2,6	170,1	0,1	0,9
MEHEDINTI	73	1,0	139,6	0,1	1,9
MURES	157	2,1	557,5	0,3	3,6
NEAMT	134	1,8	127,1	0,1	1,0
OLT	98	1,3	98,1	0,1	1,0
PRAHOVA	268	3,6	275,1	0,1	1,0
SALAJ	83	1,1	41,4	0,0	0,5
SATU MARE	117	1,6	1262,1	0,7	10,9
SIBIU	165	2,2	7318,5	3,9	44,6
SUCEAVA	150	2,0	4393,3	2,4	29,5
TELEORMAN	99	1,3	109,6	0,1	1,1
TIMIS	304	4,0	2136,8	1,1	7,1
TULCEA	73	1,0	304,4	0,2	4,2
VASLUI	79	1,0	116,8	0,1	1,5
VALCEA	78	1,0	130,3	0,1	1,7
VRANCEA	94	1,2	897,3	0,5	9,6
MUN. BUCURESTI	1260	16,7	140198,7	75,4	112,4
ILFOV	279	3,7	11910,1	6,4	43,0

Note: The average does not include filials because according to the

*** Less than 0,01%

Table no. 11

Number of incorporated trading companies and the value of the subscribed share capital by legal forms, in the month of August 2008

Company type	Total registered companies		Subscribed capital		Average subscribed capital on company
	No.	%	thousand Lei	%	thousand Lei
0	1	2	3	4	5
Total ROMÂNIA	7533	100,0	185870,7	100,0	24,8
SNC					
SCS	2	0,0	3,7	***	1,9
SA	62	0,8	89710,1	48,3	3737,9
SRL	7469	99,2	96157,0	51,7	12,9
SCA					

Note: The average does not include filials because according to the Law no.31/1990 they are not juridical persons

*** Less than 0,01%

Diagram no.5

