



MINISTRY OF JUSTICE

THE NATIONAL TRADE REGISTER OFFICE

București, Bd. Unirii nr. 74, Bl. J3b, tronson II+III, sector 3; Telefon: +40 21 316.08.04, 316.08.10; Fax: +40 21 316.08.03; Cod poștal: 030837
Website: www.onrc.ro; E-mail: onrc@onrc.ro; Cod identificare Fiscală: 14942091

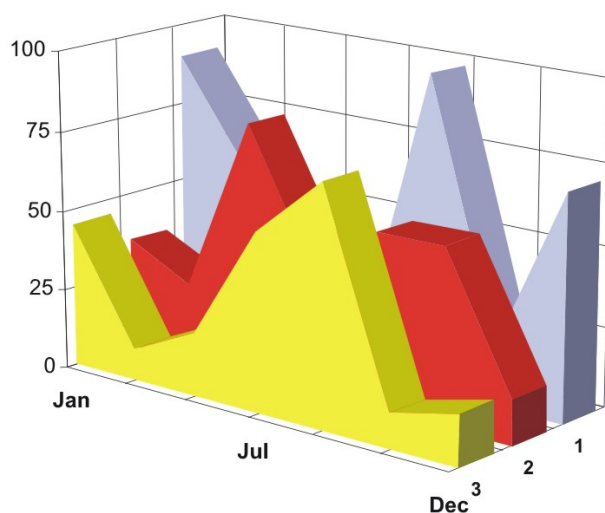
OPERATIONS IN THE CENTRAL TRADE REGISTER

STATISTIC SYNTHESIS

OF

RECORDS IN THE CENTRAL TRADE REGISTER

- the 31st of May 2008 - provisional data -



- ISSUE No. 198 -

**MINISTRY OF JUSTICE
THE NATIONAL TRADE REGISTER OFFICE**

- Operations such as incorporation of trading companies, submission of changes, and strike-off are carried out based on Law No.26/1990, as republished, Law No.31/1990, as republished and on the Methodological Norms no. P/608/1998.

- This work reflects the evolution of the operations with the Trade Register Office attached to Bucharest Law Court and the Trade Register Offices attached to County Law Courts.

- The data contained in the Central Trade Register refer to operations for which law sets out the obligation of being registered in the trade registers kept by the 42 trade register offices attached to law courts.

• The content of this publication shall not be reproduced, partly or entirely, in original or modified form, and shall not be stored in a recovery system and shall not be transmitted in any form or by any means without prior written authorization of the Ministry of Justice – The National Trade Register Office.

• The content of this publication may be used in articles, studies, books, as supporting or explanatory data only by clearly and accurately indicating the source.

CONTENTS

Page

1	Definitions	1
2.1	Data related to the period December 1990 –May 2008	3
<hr/>		
	Table no. 1 – Operations performed in the trade registers by categories of registration during December 1990 –May 2008, total by country and by counties, shares of counties in the total by country	3
	Table no. 2 – Operations performed in the trade registers by categories of registration during December 1990 –May 2008, total by country and counties, share of categories of operations in the total of each county	4
	Table no. 3 – Number and structure of incorporations in the trade registers during December 1990-May 2008	5
	Chart no. 1 – Structure by years of incorporations in the trade register	
	Table no. 4 – Number of incorporations in the trade registers by counties and capital sources during December 1990 - May 2008	6
	Table no. 5 – Number of incorporations in the trade registers by counties and business categories during December 1990 –May 2008	7
<hr/>		
2.2	Data related to May 2008	8
<hr/>		
	Table no. 6 – Operations performed in the trade registers by counties and categories of registrations in the month of May 2008	8
	Table no. 7 – Number of incorporations in the trade registers by counties and capital sources in the month of May 2008	9
	Table no. 8 – Number of incorporations in the trade registers by counties and business categories in the month of May 2008	10
	Table no. 9 –Number of incorporations in the trade registers by domains of activity and business categories in the month of May 2008	11-12
	Table no. 10 – Number of incorporated trading companies and the value of subscribed share capital, by counties, in the month of May 2008	13
	Table no. 11– Number of incorporated trading companies and the value of subscribed share capital by legal forms, in the month of May 2008	14
	Chart no. 5 – Average value of subscribed share capital by types of trading companies in the month of May 2008	14

Definitions

The Trade Register Office was established based on Law No. 26/1990, as republished and subsequently amended and supplemented, operates as an active institution since December 1990 and is twofold structured:

- at national level, represented by the National Trade Register Office organized under the authority of the Ministry of Justice
- at local level, represented by the 42 Trade Register Offices attached to Law Courts, organized under the subordination of the National Trade Register Office

Categories of persons liable to registration in the trade register:

- natural persons: authorized natural persons, individual enterprises and family enterprises currently carrying on trading activities;
 - legal persons represented by: Trading Companies, National Societies and Companies, National R&D Institutes, Autonomous Administrations, Co-operative Societies, Agricultural Co-operatives, Co-operative Organizations, Economic Interest Groupings, European Economic Interest Groupings, European Societies, European Co-operative Societies, branches of trading companies with legal establishment, operation and incorporation regime of trading company legal form under which they were incorporated.
- **Terms used in tables and charts**
- **Number of companies**, depending on the table, represents the number of trading companies incorporated during the reference period, the number of trading companies struck-off from the trade register. The following forms of organization are included: limited liability companies, joint-stock companies, limited partnerships by share, limited partnerships, general partnerships, and branches thereof.
 - **Value of subscribed share capital:**
 - **total, expressed in national currency:** the share capital value resulted by adding up the subscribed values (in cash and in kind) in national currency (lei)

➤ **Regions of economic development:**

<i>North-East:</i>	Suceava, Botoșani, Neamț, Iași, Bacău, Vaslui.
<i>South-East:</i>	Vrancea, Galați, Buzău, Brăila, Tulcea, Constanța.
<i>South-Muntenia:</i>	Argeș, Dâmbovița, Prahova, Teleorman, Giurgiu, Călărași, Ialomița.
<i>South-West Oltenia:</i>	Gorj, Vâlcea, Dolj, Mehedinți, Olt.
<i>West:</i>	Arad, Caraș-Severin, Hunedoara, Timiș.
<i>North-West:</i>	Bihor, Bistrița, Cluj, Satu Mare, Sălaj, Maramureș.
<i>Center:</i>	Alba, Brașov, Covasna, Harghita, Mureș, Sibiu.
<i>Bucharest-Ilfov:</i>	București, Ilfov.

NACE Code – The classification of economic activities in the national economy was approved by GO No. 656/1997, amended by Order No 601/2002 and Order no. 337/2007 of the President of the National Institute of Statistics, and complies with the international classification used in statistic reports and official documents. The activities are ranked by the harmonization principle, by sections, divisions, groups and classes.

Abbreviations

- **PF** - Natural Person; the following forms of organization are included in this category: natural persons and family associations registered until 25.04.2008, authorized natural persons, individual enterprises and family enterprises.
- **SNC** - General Partnership
- **SCS** - Limited Partnership
- **SCA** - Limited Partnership by Share
- **SA** - Joint-Stock Company
- **SRL** - Limited Liability Company
- **RA** - Autonomous Administration
- **APJ** - Other legal persons having the obligation to register in the trade register: National R&D Institutes, Economic Interest Groupings, European Economic Interest Groupings, European Societies, European Co-operative Societies, Agricultural Co-operatives, Co-operative Organizations.

Sources of Information:

The integrated IT system of the trade register is designed by The National Trade Register Office in compliance with the provisions of the related legislation in force. The source of information consists of the trade registers organized in computerized system, kept by the trade register offices attached to law courts.

Table no. 1

**Operations performed in the trade registers by categories of registration during
December 1990 – May 2008, total by country and by counties, share of counties in the
total by country**

Counties	Total of registered operations		out of which :					
			Registered companies		Changes in statutory documents		Strike off companies	
	No.	%	No.	%	No.	%	No.	%
0	1	2	3	4	5	6	11	12
Total ROMÂNIA	9179219	100,0	1769162	100,0	6875129	100,0	534928	100,0
ALBA	126946	1,4	27957	1,6	93636	1,4	5353	1,0
ARAD	207817	2,3	43288	2,4	153532	2,2	10997	2,1
ARGES	221549	2,4	45493	2,6	166002	2,4	10054	1,9
BACAU	210969	2,3	44270	2,5	154464	2,2	12235	2,3
BIHOR	266800	2,9	54128	3,1	197330	2,9	15342	2,9
BISTRITA-NASAUD	110742	1,2	21575	1,2	82543	1,2	6624	1,2
BOTOSANI	84451	0,9	21754	1,2	56682	0,8	6015	1,1
BRASOV	305712	3,3	55452	3,1	237693	3,5	12567	2,3
BRAILA	121173	1,3	24219	1,4	92883	1,4	4071	0,8
BUZAU	165992	1,8	32325	1,8	122631	1,8	11036	2,1
CARAS-SEVERIN	114250	1,2	21744	1,2	84068	1,2	8438	1,6
CALARASI	76365	0,8	17686	1,0	53744	0,8	4935	0,9
CLUJ	408642	4,5	82422	4,7	311719	4,5	14501	2,7
CONSTANTA	401538	4,4	73929	4,2	301145	4,4	26464	4,9
COVASNA	81619	0,9	15171	0,9	61802	0,9	4646	0,9
DAMBOVITA	136950	1,5	32739	1,9	90417	1,3	13794	2,6
DOLJ	251475	2,7	46415	2,6	192010	2,8	13050	2,4
GALATI	248046	2,7	41929	2,4	191803	2,8	14314	2,7
GIURGIU	67077	0,7	14451	0,8	47446	0,7	5180	1,0
GORJ	131823	1,4	20981	1,2	104205	1,5	6637	1,2
HARGHITA	133980	1,5	27461	1,6	101539	1,5	4980	0,9
HUNEDOARA	179549	2,0	35897	2,0	130731	1,9	12921	2,4
IALOMITA	85666	0,9	16424	0,9	63122	0,9	6120	1,1
IASI	308488	3,4	55659	3,1	240026	3,5	12803	2,4
MARAMURES	189165	2,1	45068	2,5	132860	1,9	11237	2,1
MEHEDINTI	94925	1,0	19781	1,1	67022	1,0	8122	1,5
MURES	255812	2,8	44480	2,5	196697	2,9	14635	2,7
NEAMT	193325	2,1	38665	2,2	139874	2,0	14786	2,8
OLT	115598	1,3	24759	1,4	81447	1,2	9392	1,8
PRAHOVA	316830	3,5	58738	3,3	242135	3,5	15957	3,0
SALAJ	78178	0,9	17355	1,0	55697	0,8	5126	1,0
SATU MARE	147305	1,6	30120	1,7	106631	1,6	10554	2,0
SIBIU	198876	2,2	34342	1,9	155831	2,3	8703	1,6
SUCEAVA	231926	2,5	44821	2,5	169659	2,5	17446	3,3
TELEORMAN	101841	1,1	19813	1,1	77151	1,1	4877	0,9
TIMIS	328530	3,6	62521	3,5	248657	3,6	17352	3,2
TULCEA	94264	1,0	18100	1,0	70775	1,0	5389	1,0
VASLUI	104894	1,1	22207	1,3	73848	1,1	8839	1,7
VALCEA	141484	1,5	28950	1,6	103483	1,5	9051	1,7
VRANCEA	114078	1,2	21702	1,2	87543	1,3	4833	0,9
MUN. BUCURESTI	1892144	20,6	334290	18,9	1439023	20,9	118831	22,2
ILFOV	132425	1,4	30081	1,7	95623	1,4	6721	1,3

Table no. 2

**Operations performed in the trade registers during December 1990 – May 2008,
total by country and counties, share of categories of operations in the total of
each county**

Counties	Total of registered operations		out of which :					
			Registered companies		Changes in statutory documents		Strike off companies	
	No.	%	No.	%	No.	%	No.	%
0	1	2	3	4	5	6	11	12
Total ROMÂNIA	9179219	100,0	1769162	19,3	6875129	74,9	534928	5,8
ALBA	126946	100,0	27957	22,0	93636	73,8	5353	4,2
ARAD	207817	100,0	43288	20,8	153532	73,9	10997	5,3
ARGES	221549	100,0	45493	20,5	166002	74,9	10054	4,5
BACAU	210969	100,0	44270	21,0	154464	73,2	12235	5,8
BIHOR	266800	100,0	54128	20,3	197330	74,0	15342	5,8
BISTRITA-NASAUD	110742	100,0	21575	19,5	82543	74,5	6624	6,0
BOTOSANI	84451	100,0	21754	25,8	56682	67,1	6015	7,1
BRASOV	305712	100,0	55452	18,1	237693	77,8	12567	4,1
BRAILA	121173	100,0	24219	20,0	92883	76,7	4071	3,4
BUZAU	165992	100,0	32325	19,5	122631	73,9	11036	6,6
CARAS-SEVERIN	114250	100,0	21744	19,0	84068	73,6	8438	7,4
CALARASI	76365	100,0	17686	23,2	53744	70,4	4935	6,5
CLUJ	408642	100,0	82422	20,2	311719	76,3	14501	3,5
CONSTANTA	401538	100,0	73929	18,4	301145	75,0	26464	6,6
COVASNA	81619	100,0	15171	18,6	61802	75,7	4646	5,7
DAMBOVITA	136950	100,0	32739	23,9	90417	66,0	13794	10,1
DOLJ	251475	100,0	46415	18,5	192010	76,4	13050	5,2
GALATI	248046	100,0	41929	16,9	191803	77,3	14314	5,8
GIURGIU	67077	100,0	14451	21,5	47446	70,7	5180	7,7
GORJ	131823	100,0	20981	15,9	104205	79,0	6637	5,0
HARGHITA	133980	100,0	27461	20,5	101539	75,8	4980	3,7
HUNEDOARA	179549	100,0	35897	20,0	130731	72,8	12921	7,2
IALOMITA	85666	100,0	16424	19,2	63122	73,7	6120	7,1
IASI	308488	100,0	55659	18,0	240026	77,8	12803	4,2
MARAMURES	189165	100,0	45068	23,8	132860	70,2	11237	5,9
MEHEDINTI	94925	100,0	19781	20,8	67022	70,6	8122	8,6
MURES	255812	100,0	44480	17,4	196697	76,9	14635	5,7
NEAMT	193325	100,0	38665	20,0	139874	72,4	14786	7,6
OLT	115598	100,0	24759	21,4	81447	70,5	9392	8,1
PRAHOVA	316830	100,0	58738	18,5	242135	76,4	15957	5,0
SALAJ	78178	100,0	17355	22,2	55697	71,2	5126	6,6
SATU MARE	147305	100,0	30120	20,4	106631	72,4	10554	7,2
SIBIU	198876	100,0	34342	17,3	155831	78,4	8703	4,4
SUCEAVA	231926	100,0	44821	19,3	169659	73,2	17446	7,5
TELEORMAN	101841	100,0	19813	19,5	77151	75,8	4877	4,8
TIMIS	328530	100,0	62521	19,0	248657	75,7	17352	5,3
TULCEA	94264	100,0	18100	19,2	70775	75,1	5389	5,7
VASLUI	104894	100,0	22207	21,2	73848	70,4	8839	8,4
VALCEA	141484	100,0	28950	20,5	103483	73,1	9051	6,4
VRANCEA	114078	100,0	21702	19,0	87543	76,7	4833	4,2
MUN. BUCURESTI	1892144	100,0	334290	17,7	1439023	76,1	118831	6,3
ILFOV	132425	100,0	30081	22,7	95623	72,2	6721	5,1

Table no.3

Number and structure of incorporations in the trade registers during December 1990- May 2008

Period (year, month)	Registered companies	Percentage	
	No.	%	%
0	1	2	3
Total, 30 April 2008, out of which	1769162	100,00	
Year 1990	81	0,00	
Year 1991	95840	5,42	
Year 1992	137456	7,77	
Year 1993	117078	6,62	
Year 1994	137445	7,77	
Year 1995	65479	3,70	
Year 1996	62089	3,51	
Year 1997	55663	3,15	
Year 1998	63878	3,61	
Year 1999	57197	3,23	
Year 2000	57291	3,24	
Year 2001	61265	3,46	
Year 2002	84780	4,79	
Year 2003	123582	6,99	
Year 2004	144284	8,16	
Year 2005	159464	9,01	
Year 2006	135371	7,65	
Year 2007	144728	8,18	
Year 2008 (I - XII) out of which :	66191		53,8
January	9833		14,9
February	15237		10,5
March	15253		10,5
April	13379		9,2
May	12489		8,6

Note: Column 2 reveals the annual structure of incorporations; column 3 reveals the structure by months during the current year.

Diagram no.1

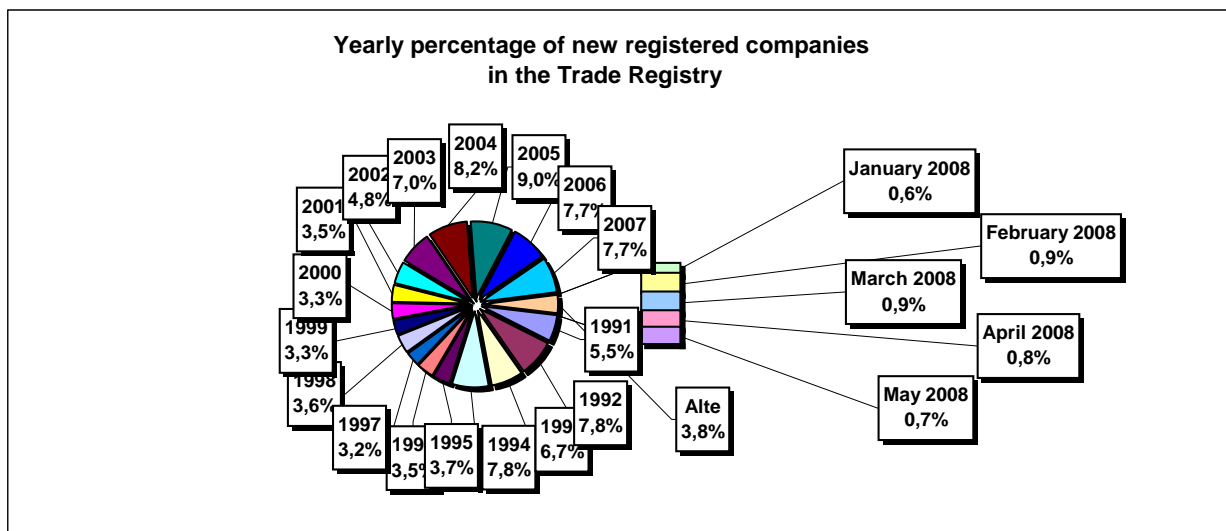


Table no. 4

Number of incorporations in the trade registers by counties and capital sources during December 1990 - May 2008

Counties	Total		out of which:						Ranking by: *	
			Private capital			State majority capital		Mixed capital (state+private)		
			out of which:			out of which:				
			PF	Companies	SC	APJ	RA	Companies		Companies
No.	%	No.	No.	No.	No.	No.	No.	No.		
0	1	2	3	4	5	6	7	8	9	
Total ROMÂNIA	1769162	100,0	460171	1289238	2016	5402	1351	2376	8608	X
ALBA	27957	1,6	9729	17795	36	142	38	47	170	25
ARAD	43289	2,4	16351	26319	59	157	27	41	335	15
ARGES	45493	2,6	14573	30493	48	168	29	30	152	10
BACAU	44270	2,5	14632	29039	138	158	35	42	226	14
BIHOR	54128	3,1	13224	40287	63	146	38	62	308	8
BISTRITA-NASAUD	21575	1,2	7542	13732	46	98	19	29	109	33
BOTOSANI	21754	1,2	10116	11163	40	122	21	173	119	30
BRASOV	55452	3,1	11905	43068	58	115	47	87	172	7
BRAILA	24219	1,4	6281	17560	42	96	28	45	167	28
BUZAU	32325	1,8	9551	22385	46	142	28	42	131	21
CARAS-SEVERIN	21744	1,2	7496	13868	41	102	35	65	137	31
CALARASI	17686	1,0	5231	12157	22	86	18	77	95	38
CLUJ	82422	4,7	21257	60598	62	150	52	41	262	2
CONSTANTA	73929	4,2	14498	58501	82	203	51	51	543	3
COVASNA	15171	0,9	5327	9570	41	68	24	32	109	41
DAMBOVITA	32739	1,9	14626	17690	32	134	29	75	153	20
DOLJ	46415	2,6	9720	36193	39	162	40	58	203	9
GALATI	41929	2,4	8827	32708	35	135	30	51	143	16
GIURGIU	14451	0,8	3465	10650	15	80	22	109	110	42
GORJ	20981	1,2	5078	15460	26	184	50	83	100	34
HARGHITA	27461	1,6	11282	15732	64	87	23	43	230	26
HUNEDOARA	35897	2,0	9389	25979	33	81	40	92	283	18
IALOMITA	16424	0,9	6228	9943	27	74	15	46	91	40
IASI	55659	3,1	15586	39374	87	164	34	70	344	6
MARAMURES	45068	2,5	17880	26822	43	124	37	39	123	11
MEHEDINTI	19781	1,1	6415	13121	19	82	19	27	98	36
MURES	44480	2,5	16418	27606	68	156	30	34	168	13
NEAMT	38665	2,2	14288	23925	66	162	29	30	165	17
OLT	24759	1,4	9631	14728	26	161	26	64	123	27
PRAHOVA	58738	3,3	18166	39934	67	177	50	72	272	5
SALAJ	17355	1,0	6807	10290	41	107	19	28	63	39
SATU MARE	30120	1,7	10010	19786	41	88	19	42	134	22
SIBIU	34342	1,9	8597	25289	37	119	34	108	158	19
SUCEAVA	44821	2,5	21187	23044	73	203	30	64	220	12
TELEORMAN	19813	1,1	6844	12536	33	152	21	45	182	35
TIMIS	62521	3,5	10269	51588	69	140	38	69	348	4
TULCEA	18100	1,0	6432	11294	36	66	18	42	212	37
VASLUI	22207	1,3	10571	11313	22	109	16	41	135	29
VALCEA	28950	1,6	11308	17220	64	168	40	37	113	24
VRANCEA	21702	1,2	6558	14848	35	104	16	27	114	32
MUN. BUCURESTI	334289	18,9	23167	309584	63	138	115	103	1119	1
ILFOV	30081	1,7	3709	26046	31	92	21	13	169	23

Table no. 5

**Number of incorporations in the trade registers by counties and business categories
during December 1990 – May 2008**

County	Total		out of which:							
			PF	companies: 1300222				RA	SC	APJ
	SNC	SCS		SRL	SA					
	No.	%	No.	No.	No.	No.	No.	No.	No.	
0	1	2	3	4	5	6	7	8	9	10
Total ROMÂNIA	1769162	100,0	460171	32666	1585	1233044	32921	1351	2016	5402
ALBA	27957	1,6	9729	890	11	16548	563	38	36	142
ARAD	43288	2,4	16351	53	12	25944	684	27	59	157
ARGES	45493	2,6	14573	107	15	29721	832	29	48	168
BACAU	44270	2,5	14632	1299	4	27266	737	35	138	158
BIHOR	54128	3,1	13224	126	47	39573	911	38	63	146
BISTRITA-NASAUD	21575	1,2	7542	146	21	13285	418	19	46	98
BOTOSANI	21754	1,2	10116	468	1	10531	455	21	40	122
BRASOV	55452	3,1	11905	239	20	42202	866	47	58	115
BRAILA	24219	1,4	6281	376	12	16862	522	28	42	96
BUZAU	32325	1,8	9551	3747	46	18183	582	28	46	142
CARAS-SEVERIN	21744	1,2	7496	117	9	13473	471	35	41	102
CALARASI	17686	1,0	5231	609	3	11360	357	18	22	86
CLUJ	82422	4,7	21257	2112	18	57461	1310	52	62	150
CONSTANTA	73929	4,2	14498	311	23	57269	1492	51	82	203
COVASNA	15171	0,9	5327	148	4	9260	299	24	41	68
DAMBOVITA	32739	1,9	14626	60	8	17357	493	29	32	134
DOLJ	46415	2,6	9720	1560	8	33993	893	40	39	162
GALATI	41929	2,4	8827	1574	6	30474	848	30	35	135
GIURGIU	14451	0,8	3465	35	8	10500	326	22	15	80
GORJ	20981	1,2	5078	29	1	15121	492	50	26	184
HARGHITA	27461	1,6	11282	62	7	15444	492	23	64	87
HUNEDOARA	35897	2,0	9389	1166	98	24411	679	40	33	81
IALOMITA	16424	0,9	6228	266	11	9454	349	15	27	74
IASI	55659	3,1	15586	507	111	38153	1015	34	87	164
MARAMURES	45068	2,5	17880	1927	23	24435	598	37	43	124
MEHEDINTI	19781	1,1	6415	427	3	12484	332	19	19	82
MURES	44480	2,5	16418	37	34	27063	674	30	68	156
NEAMT	38665	2,2	14288	3293	30	20123	674	29	66	162
OLT	24759	1,4	9631	1611	1	12808	495	26	26	161
PRAHOVA	58738	3,3	18166	3122	15	36229	912	50	67	177
SALAJ	17355	1,0	6807	600	4	9484	293	19	41	107
SATU MARE	30120	1,7	10010	283	6	19195	478	19	41	88
SIBIU	34342	1,9	8597	777	49	24063	666	34	37	119
SUCEAVA	44821	2,5	21187	438	8	22292	590	30	73	203
TELEORMAN	19813	1,1	6844	272	399	11668	424	21	33	152
TIMIS	62521	3,5	10269	613	29	50096	1267	38	69	140
TULCEA	18100	1,0	6432	1363	114	9590	481	18	36	66
VASLUI	22207	1,3	10571	90	13	10970	416	16	22	109
VALCEA	28950	1,6	11308	364	6	16510	490	40	64	168
VRANCEA	21702	1,2	6558	356	10	14169	454	16	35	104
MUN. BUCURESTI	334290	18,9	23167	1037	305	302493	6971	115	63	138
ILFOV	30081	1,7	3709	49	32	25527	620	21	31	92

Table no. 6

Operations performed in the trade registers by counties and categories of registration in the month of May 2008

County	Total of operations carried on		out of which:					
			New incorporations		Changes in statutory documents		Strike off companies	
	No.	%	No.	%	No.	%	No.	%
0	1	2	3	4	5	6	9	10
Total ROMÂNIA	180819	100,0	12489	6,9	165323	91,4	3007	1,7
ALBA	2401	100,0	193	8,0	2169	90,3	39	1,6
ARAD	3003	100,0	285	9,5	2534	84,4	184	6,1
ARGES	2713	100,0	289	10,7	2376	87,6	48	1,8
BACAU	4733	100,0	307	6,5	4382	92,6	44	0,9
BIHOR	2297	100,0	432	18,8	1794	78,1	71	3,1
BISTRITA-NASAUD	3367	100,0	139	4,1	3191	94,8	37	1,1
BOTOSANI	1632	100,0	144	8,8	1464	89,7	24	1,5
BRASOV	11669	100,0	411	3,5	11046	94,7	212	1,8
BRAILA	2339	100,0	153	6,5	2172	92,9	14	0,6
BUZAU	3389	100,0	229	6,8	3133	92,4	27	0,8
CARAS-SEVERIN	2446	100,0	115	4,7	2304	94,2	27	1,1
CALARASI	944	100,0	122	12,9	813	86,1	9	1,0
CLUJ	8318	100,0	594	7,1	7536	90,6	188	2,3
CONSTANTA	7410	100,0	527	7,1	6825	92,1	58	0,8
COVASNA	730	100,0	161	22,1	533	73,0	36	4,9
DAMBOVITA	3154	100,0	217	6,9	2872	91,1	65	2,1
DOLJ	2164	100,0	320	14,8	1786	82,5	58	2,7
GALATI	4778	100,0	299	6,3	4444	93,0	35	0,7
GIURGIU	1016	100,0	104	10,2	884	87,0	28	2,8
GORJ	1352	100,0	134	9,9	1175	86,9	43	3,2
HARGHITA	3538	100,0	139	3,9	3359	94,9	40	1,1
HUNEDOARA	1801	100,0	236	13,1	1480	82,2	85	4,7
IALOMITA	1874	100,0	89	4,7	1770	94,5	15	0,8
IASI	6639	100,0	479	7,2	6026	90,8	134	2,0
MARAMURES	4012	100,0	322	8,0	3659	91,2	31	0,8
MEHEDINTI	1554	100,0	137	8,8	1394	89,7	23	1,5
MURES	4220	100,0	357	8,5	3820	90,5	43	1,0
NEAMT	1771	100,0	228	12,9	1387	78,3	156	8,8
OLT	3303	100,0	148	4,5	3137	95,0	18	0,5
PRAHOVA	7427	100,0	450	6,1	6813	91,7	164	2,2
SALAJ	1858	100,0	168	9,0	1653	89,0	37	2,0
SATU MARE	2355	100,0	217	9,2	2107	89,5	31	1,3
SIBIU	7651	100,0	226	3,0	7312	95,6	113	1,5
SUCEAVA	1318	100,0	236	17,9	1017	77,2	65	4,9
TELEORMAN	3027	100,0	126	4,2	2891	95,5	10	0,3
TIMIS	4523	100,0	460	10,2	3804	84,1	259	5,7
TULCEA	1302	100,0	79	6,1	1206	92,6	17	1,3
VASLUI	924	100,0	106	11,5	809	87,6	9	1,0
VALCEA	4106	100,0	220	5,4	3769	91,8	117	2,8
VRANCEA	2231	100,0	148	6,6	2044	91,6	39	1,7
MUN. BUCURESTI	41278	100,0	2409	5,8	38542	93,4	327	0,8
ILFOV	4252	100,0	334	7,9	3891	91,5	27	0,6

Table no.7

Number of incorporations in the trade registers by counties and capital sources in the month of May 2008

County	Total		out of which:						Rnking by: *	
			Private capital				State majority capital			Mixed capital (state+priva)
			out of which:				out of which:			
			PF	Companies	SC	APJ	RA	Companie s		Companie s
No.	%	No.	No.	No.		No.	No.	No.		
0	1	2	3	4	5	6	7	8	9	
Total ROMÂNIA	12489	100,0	4084	8396	3	4			2	X
ALBA	193	1,5	72	120		1				25
ARAD	285	2,3	95	190						16
ARGES	289	2,3	93	196						15
BACAU	307	2,5	126	179	2					13
BIHOR	432	3,5	183	249						7
BISTRITA-NASAUD	139	1,1	54	85						32
BOTOSANI	144	1,2	78	66						31
BRASOV	411	3,3	144	266		1				8
BRAILA	153	1,2	71	82						28
BUZAU	229	1,8	90	139						19
CARAS-SEVERIN	115	0,9	29	86						38
CALARASI	122	1,0	44	78						37
CLUJ	594	4,8	217	377						2
CONSTANTA	527	4,2	137	390						3
COVASNA	161	1,3	89	72						27
DAMBOVITA	217	1,7	77	140						23
DOLJ	320	2,6	114	206						12
GALATI	299	2,4	105	194						14
GIURGIU	104	0,8	14	90						40
GORJ	134	1,1	47	87						35
HARGHITA	139	1,1	42	96		1				33
HUNEDOARA	236	1,9	83	152					1	17
IALOMITA	89	0,7	28	61						41
IASI	479	3,8	190	289						4
MARAMURES	322	2,6	105	217						11
MEHEDINTI	137	1,1	65	72						34
MURES	357	2,9	168	188	1					9
NEAMT	228	1,8	63	165						20
OLT	148	1,2	45	103						29
PRAHOVA	450	3,6	153	296					1	6
SALAJ	168	1,3	98	70						26
SATU MARE	217	1,7	74	143						24
SIBIU	226	1,8	90	136						21
SUCEAVA	236	1,9	89	146		1				18
TELEORMAN	126	1,0	36	90						36
TIMIS	460	3,7	107	353						5
TULCEA	79	0,6	29	50						42
VASLUI	106	0,8	38	68						39
VALCEA	220	1,8	104	116						22
VRANCEA	148	1,2	51	97						30
MUN. BUCURESTI	2409	19,3	528	1881						1
ILFOV	334	2,7	19	315						10

Table no.8

Number of incorporations in the trade registers by counties and business categories in the month of May 2008

County	Total		out of which:							
			PF	companies: 8398				RA	SC	APJ
				SNC	SCS	SRL	SA			
				No.	No.	No.	No.			
0	1	2	3	4	5	6	7	8	9	
Total ROMÂNIA	12489	100,0	4084	1	1	8340	56		3	4
ALBA	193	1,5	72			120				1
ARAD	285	2,3	95			188	2			
ARGES	289	2,3	93			195	1			
BACAU	307	2,5	126			177	2		2	
BIHOR	432	3,5	183			247	2			
BISTRITA-NASAUD	139	1,1	54			85				
BOTOSANI	144	1,2	78			66				
BRASOV	411	3,3	144			266				1
BRAILA	153	1,2	71			82				
BUZAU	229	1,8	90			139				
CARAS-SEVERIN	115	0,9	29			86				
CALARASI	122	1,0	44			78				
CLUJ	594	4,8	217			374	3			
CONSTANTA	527	4,2	137			388	2			
COVASNA	161	1,3	89			72				
DAMBOVITA	217	1,7	77			140				
DOLJ	320	2,6	114			203	3			
GALATI	299	2,4	105			193	1			
GIURGIU	104	0,8	14			89	1			
GORJ	134	1,1	47			86	1			
HARGHITA	139	1,1	42			95	1			1
HUNEDOARA	236	1,9	83			149	4			
IALOMITA	89	0,7	28			61				
IASI	479	3,8	190			288	1			
MARAMURES	322	2,6	105			215	2			
MEHEDINTI	137	1,1	65			72				
MURES	357	2,9	168			188			1	
NEAMT	228	1,8	63			165				
OLT	148	1,2	45			103				
PRAHOVA	450	3,6	153			294	3			
SALAJ	168	1,3	98			69	1			
SATU MARE	217	1,7	74			143				
SIBIU	226	1,8	90			135	1			
SUCEAVA	236	1,9	89			146				1
TELEORMAN	126	1,0	36			90				
TIMIS	460	3,7	107	1		350	2			
TULCEA	79	0,6	29			50				
VASLUI	106	0,8	38			67	1			
VALCEA	220	1,8	104			116				
VRANCEA	148	1,2	51			96	1			
MUN. BUCURESTI	2409	19,3	528		1	1860	20			
ILFOV	334	2,7	19			314	1			

Table no. 9

Number of incorporations in the trade registers by domains of activity and business categories in the month of May 2008

CAEN segment	Field of activity	Total		out of which:								
				PF	companies: 8398				RA	SC	APJ	
					SNC	SCS	SRL	SA				
					No.	No.	No.	No.				
0	1	2	3	4	5	6	7	8	9	10	11	
	Total ROMÂNIA	12489	100,0	4084	1	1	8340	56			3	4
1	Agriculture, hunting and related service activities	279	2,2	136			139				1	3
2	Forestry and logging	47	0,4	10			37					
3	Fishing and aquaculture	56	0,4	47			9					
5	Mining of hard and brown coal	1	0,0				1					
6	Extraction of crude petroleum and natural gas											
7	Mining of metal ores	1	0,0				1					
8	Other mining and quarrying	25	0,2				25					
9	Mining support service activities	3	0,0	2			1					
10	Manufacture of food products	85	0,7	29			56					
11	Manufacture of beverages	7	0,1	5			2					
12	Manufacture of tobacco products											
13	Manufacture of textiles	15	0,1	5			10					
14	Manufacture of wearing apparel	55	0,4	19			36					
15	Tanning and dressing of leather; manufacture of luggage, handbags, saddlery, harness and footwear; dressing and dyeing of fur	14	0,1	6			8					
16	Manufacture of wood and of products of wood and cork, except furniture; manufacture of articles of straw and	83	0,7	31			52					
17	Manufacture of paper and paper products	5	0,0				5					
18	Printing and reproduction of recorded media	21	0,2	3			18					
19	Manufacture of coke and refined petroleum products	2	0,0				2					
20	Manufacture of chemicals and chemical products	11	0,1				11					
21	Manufacture of basic pharmaceutical products and pharmaceutical preparations											
22	Manufacture of rubber and plastic products	48	0,4	4			43	1				
23	Manufacture of other non-metallic mineral products	77	0,6	25			52					
24	Manufacture of basic metals	4	0,0				4					
25	Manufacture of fabricated metal products, except machinery and equipment	128	1,0	59			69					
26	Manufacture of computer, electronic and optical products	6	0,0	1			5					
27	Manufacture of electrical equipment	12	0,1	1			11					
28	Manufacture of machinery and equipment n.e.c.	8	0,1				8					
29	Manufacture of motor vehicles, trailers and semi-trailers	4	0,0				4					
30	Manufacture of other transport equipment	15	0,1	4			11					
31	Manufacture of furniture	54	0,4	16			38					
32	Other manufacturing	33	0,3	17			16					
33	Repair and installation of machinery and equipment	49	0,4	16			33					
35	Electricity, gas, steam and air conditioning supply	23	0,2	1			19	3				
36	Water collection, treatment and supply	2	0,0				1	1				
37	Sewerage	7	0,1	1			6					
38	Waste collection, treatment and disposal activities; materials recovery	50	0,4	9			41					
39	Remediation activities and other waste management services	1	0,0				1					
41	Construction of buildings	1451	11,6	151			1299	1				
42	Civil engineering	54	0,4	6			46	2				
43	Specialised construction activities	848	6,8	323			525					
45	Wholesale and retail trade and repair of motor vehicles and motorcycles	333	2,7	51			281	1				
46	Wholesale trade, except of motor vehicles and motorcycles	1241	9,9	294			944	3				
47	Retail trade, except of motor vehicles and motorcycles	1933	15,5	731			1201	1				
49	Land transport and transport via pipelines	706	5,7	207			499					
50	Water transport	7	0,1	2			5					

Table no. 10

Number of incorporated trading companies and the value of the subscribed share capital, by counties, in the month of May 2008

County	Total registered companies		Subscribed capital		Average subscribed capital on company
	No.	%	thousand Lei	%	thousand Lei
0	1	2	3	4	5
Total ROMÂNIA	8398	100,0	109966,1	100,0	13,2
ALBA	120	1,4	367,6	0,3	3,1
ARAD	190	2,3	227,4	0,2	1,2
ARGES	196	2,3	7655,6	7,0	39,1
BACAU	179	2,1	4163,2	3,8	23,5
BIHOR	249	3,0	1010,4	0,9	4,1
BISTRITA-NASAUD	85	1,0	93,4	0,1	1,1
BOTOSANI	66	0,8	24,1	0,0	0,4
BRASOV	266	3,2	560,3	0,5	2,1
BRAILA	82	1,0	51,9	0,0	0,6
BUZAU	139	1,7	2822,5	2,6	20,3
CARAS-SEVERIN	86	1,0	139,7	0,1	1,6
CALARASI	78	0,9	1182,8	1,1	15,2
CLUJ	377	4,5	12934,5	11,8	34,4
CONSTANTA	390	4,6	1582,5	1,4	4,1
COVASNA	72	0,9	982,1	0,9	13,6
DAMBOVITA	140	1,7	139,3	0,1	1,0
DOLJ	206	2,5	87,7	0,1	0,4
GALATI	194	2,3	2122,3	1,9	10,9
GIURGIU	90	1,1	46,2	0,0	0,5
GORJ	87	1,0	20,9	0,0	0,2
HARGHITA	96	1,1	501,2	0,5	5,4
HUNEDOARA	153	1,8	913,2	0,8	6,0
IALOMITA	61	0,7	45,1	0,0	0,7
IASI	289	3,4	205,0	0,2	0,7
MARAMURES	217	2,6	134,9	0,1	0,6
MEHEDINTI	72	0,9	18,9	0,0	0,3
MURES	188	2,2	937,1	0,9	5,0
NEAMT	165	2,0	375,5	0,3	2,3
OLT	103	1,2	275,7	0,3	2,7
PRAHOVA	297	3,5	18119,6	16,5	61,4
SALAJ	70	0,8	519,7	0,5	7,4
SATU MARE	143	1,7	88,6	0,1	0,6
SIBIU	136	1,6	456,5	0,4	3,4
SUCEAVA	146	1,7	60,9	0,1	0,4
TELEORMAN	90	1,1	84,4	0,1	0,9
TIMIS	353	4,2	1212,7	1,1	3,5
TULCEA	50	0,6	112,4	0,1	2,2
VASLUI	68	0,8	21,5	0,0	0,3
VALCEA	116	1,4	1106,5	1,0	9,5
VRANCEA	97	1,2	43,0	0,0	0,4
MUN. BUCURESTI	1881	22,4	24692,6	22,5	13,2
ILFOV	315	3,8	23826,8	21,7	76,4

Table no. 11

Number of incorporated trading companies and the value of the subscribed share capital by legal forms, in the month of May 2008

Company type	Total registered companies		Subscribed capital		Average subscribed capital on company
	No.	%	thousand Lei	%	thousand Lei
0	1	2	3	4	5
Total ROMÂNIA	8398	100,0	109966,1	100,0	13,2
SNC	1	0,0	0,2	***	0,2
SCS	1	0,0	10,0	***	10,0
SA	56	0,7	20386,6	18,5	970,8
SRL	8340	99,3	89569,4	81,5	10,8
SCA					

Note: The average does not include filials because according to the Law no.31/1990 they are not juridical persons

*** Less than 0,01%

Diagram no.5

