



MINISTRY OF JUSTICE

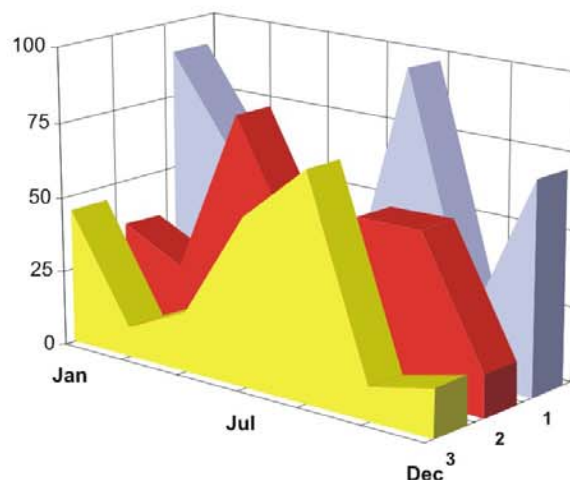
THE NATIONAL TRADE REGISTER OFFICE

București, Bd. Unirii nr. 74, Bl. J3b, tronson II+III, sector 3; Telefon: +40 21 316.08.04, 316.08.10; Fax: +40 21 316.08.03; Cod poștal: 030837  
Website: [www.onrc.ro](http://www.onrc.ro); E-mail: [onrc@onrc.ro](mailto:onrc@onrc.ro); Cod identificare Fiscală: 14942091

# PROCEEDINGS IN THE CENTRAL TRADE REGISTER

## STATISTICAL SYNTHESIS

### OF RECORDS IN THE CENTRAL TRADE REGISTER - the 30<sup>th</sup> of April 2008 - provisional data -



- ISSUE No. 197 -

**MINISTRY OF JUSTICE  
THE NATIONAL TRADE REGISTER OFFICE**

---

- Operations such as incorporation of trading companies, submission of changes, and strike-off are carried out based on Law No.26/1990, as republished, Law No.31/1990, as republished and on the Methodological Norms no. P/608/1998.
  
- This work reflects the evolution of the operations with the Trade Register Office attached to Bucharest Law Court and the Trade Register Offices attached to County Law Courts.
  
- The data contained in the Central Trade Register refer to operations for which law sets out the obligation of being registered in the trade registers kept by the 42 trade register offices attached to law courts.

*• The content of this publication shall not be reproduced, partly or entirely, in original or modified form, and shall not be stored in a recovery system and shall not be transmitted in any form or by any means without prior written authorization of the Ministry of Justice – The National Trade Register Office.*

*• The content of this publication may be used in articles, studies, books, as supporting or explanatory data only by clearly and accurately indicating the source.*

# CONTENTS

Page

<b>1</b>	<b>Definitions</b>	<b>1</b>
<b>2.1</b>	<b>Data related to December 1990 –April 2008</b>	<b>3</b>
<b>Table no.1 – Operations performed in the trade registers by categories of registration during December 1990 –April 2008, total by country and by counties, share of counties in the total by country</b>		<b>3</b>
<b>Table no.2 – Operations performed in the trade registers during December 1990 –April 2008, total by country and counties, share of categories of operations in the total of each county</b>		<b>4</b>
<b>Table no. 3 – Number and structure of incorporations in the trade registers during December 1990-April 2008</b>		<b>5</b>
<b>Diagram no. 1 - Yearly percentage of new registered companies in the Trade Registry</b>		
<b>Table no. 4 – Number of incorporations in the trade registers by counties and capital sources during December 1990 - April 2008</b>		<b>6</b>
<b>Table no. 5 – Number of incorporations in the trade registers by counties and business categories during December 1990 –April 2008</b>		<b>7</b>
<b>2.2</b>	<b>Data related to April 2008</b>	<b>8</b>
<b>Table no. 6 – Operations performed in the trade registers by counties and categories of registration in the month of April 2008</b>		<b>8</b>
<b>Table no. 7 – Number of incorporations in the trade registers by counties and capital sources in the month of April 2008</b>		<b>9</b>
<b>Table no. 8 – Number of incorporations in the trade registers by counties and business categories in the month of April 2008</b>		<b>10</b>
<b>Table no. 9 –Number of incorporations in the trade registers by domains of activity and business categories in the month of April 2008</b>		<b>11-12</b>
<b>Table no. 10 – Number of incorporated trading companies and the value of the subscribed share capital, by counties, in the month of April 2008</b>		<b>13</b>
<b>Table no. 11– Number of incorporated trading companies and the value of the subscribed share capital by legal forms, in the month of April 2008</b>		<b>14</b>
<b>Chart no. 5 – Average value of the subscribed share capital by types of trading companies in the month of April 2008</b>		<b>14</b>

## Definitions

The Trade Register Office was established based on Law No. 26/1990, as republished and subsequently amended and supplemented, operates as an active institution as of December 1990 and is twofold structured:

- at national level, represented by the National Trade Register Office organized under the authority of the Ministry of Justice
- at local level, represented by the 42 Trade Register Offices attached to Law Courts, organized under the subordination of the National Trade Register Office

The business categories subject to registration in the trade register are:

- natural persons and family associations usually carrying on trading activities, trading companies, national companies, autonomous administrations, and co-operative organizations
- branches registered as trading companies with legal personality, having the setting-up, operation and incorporation legal regime of the type of legal form.

- **Terms used in tables and charts**

- **Number of companies:** depending on the table, the number of companies incorporated during the reference period, the number of companies struck-off from the trade register.

- **Value of subscribed share capital:**

- **total, in national currency:** the share capital value resulted by adding up the subscribed values (in cash and in kind) in national currency (lei)

- **Regions of economic development:**

<i>North-East:</i>	Suceava, Botoșani, Neamț, Iași, Bacău, Vaslui.
<i>South-East:</i>	Vrancea, Galați, Buzău, Brăila, Tulcea, Constanța.
<i>South-Muntenia:</i>	Argeș, Dâmbovița, Prahova, Teleorman, Giurgiu, Călărași, Ialomița.
<i>South-West Oltenia:</i>	Gorj, Vâlcea, Dolj, Mehedinți, Olt.
<i>West:</i>	Arad, Caraș-Severin, Hunedoara, Timiș.
<i>North-West:</i>	Bihor, Bistrița, Cluj, Satu Mare, Sălaj, Maramureș.
<i>Center:</i>	Alba, Brașov, Covasna, Harghita, Mureș, Sibiu.
<i>Bucharest-Ilfov:</i>	București, Ilfov.

NACE Code – The Classification of Economic Activities in the European Community was approved by GO No. 656/1997, amended by Order No 601/2002 and by Order no. 337/2007 of the President of the National Institute of Statistics, and complies with the international classification used in statistic reports and official documents. Activities are ranked by the harmonization principle by sections, divisions, groups and classes.

## Abbreviations

- **PF** - Authorized Natural Person
- **AF** - Family Association
- **SNC** - General Partnership
- **SCS** - Limited Partnership
- **SA** - Joint-Stock Company
- **SRL** - Limited Liability Company
- **RA** - Autonomous Administration
- **OC** - Co-operative Organization

## Sources of Information:

The integrated IT system of the trade register is designed by The National Trade Register Office in compliance with the provisions of the related legislation in force. The source of information consists of the trade registers organized in a computerized system, kept by the trade register offices attached to law courts.

Table no. 1

**Operations performed in the trade registers by categories of registration during  
December 1990 – April 2008, total by country and by counties, share of counties in  
the total by country**

Counties	Total of registered operations		out of which :					
			Registered companies		Changes in statutory documents		Strike off companies	
	No.	%	No.	%	No.	%	No.	%
0	1	2	3	4	5	6	11	12
<b>Total ROMÂNIA</b>	<b>9159151</b>	<b>100,0</b>	<b>1754270</b>	<b>100,0</b>	<b>6872960</b>	<b>100,0</b>	<b>531921</b>	<b>100,0</b>
ALBA	124455	1,4	27674	1,6	91467	1,3	5314	1,0
ARAD	207289	2,3	42944	2,4	153532	2,2	10813	2,0
ARGES	221161	2,4	45153	2,6	166002	2,4	10006	1,9
BACAU	210481	2,3	43826	2,5	154464	2,2	12191	2,3
BIHOR	266236	2,9	53635	3,1	197330	2,9	15271	2,9
BISTRITA-NASAUD	110520	1,2	21390	1,2	82543	1,2	6587	1,2
BOTOSANI	84241	0,9	21568	1,2	56682	0,8	5991	1,1
BRASOV	305009	3,3	54961	3,1	237693	3,5	12355	2,3
BRAILA	120963	1,3	24023	1,4	92883	1,4	4057	0,8
BUZAU	165690	1,8	32050	1,8	122631	1,8	11009	2,1
CARAS-SEVERIN	114062	1,2	21583	1,2	84068	1,2	8411	1,6
CALARASI	76166	0,8	17496	1,0	53744	0,8	4926	0,9
CLUJ	407798	4,5	81766	4,7	311719	4,5	14313	2,7
CONSTANTA	400815	4,4	73264	4,2	301145	4,4	26406	5,0
COVASNA	81372	0,9	14960	0,9	61802	0,9	4610	0,9
DAMBOVITA	136636	1,5	32490	1,9	90417	1,3	13729	2,6
DOLJ	251045	2,7	46043	2,6	192010	2,8	12992	2,4
GALATI	247675	2,7	41593	2,4	191803	2,8	14279	2,7
GIURGIU	66929	0,7	14331	0,8	47446	0,7	5152	1,0
GORJ	131620	1,4	20821	1,2	104205	1,5	6594	1,2
HARGHITA	133679	1,5	27200	1,6	101539	1,5	4940	0,9
HUNEDOARA	179189	2,0	35622	2,0	130731	1,9	12836	2,4
IALOMITA	85532	0,9	16305	0,9	63122	0,9	6105	1,1
IASI	307785	3,4	55090	3,1	240026	3,5	12669	2,4
MARAMURES	188768	2,1	44702	2,5	132860	1,9	11206	2,1
MEHEDINTI	94746	1,0	19625	1,1	67022	1,0	8099	1,5
MURES	255333	2,8	44044	2,5	196697	2,9	14592	2,7
NEAMT	192875	2,1	38371	2,2	139874	2,0	14630	2,8
OLT	115406	1,3	24585	1,4	81447	1,2	9374	1,8
PRAHOVA	316148	3,5	58220	3,3	242135	3,5	15793	3,0
SALAJ	77927	0,9	17141	1,0	55697	0,8	5089	1,0
SATU MARE	147017	1,6	29863	1,7	106631	1,6	10523	2,0
SIBIU	198492	2,2	34071	1,9	155831	2,3	8590	1,6
SUCEAVA	231553	2,5	44513	2,5	169659	2,5	17381	3,3
TELEORMAN	101669	1,1	19651	1,1	77151	1,1	4867	0,9
TIMIS	327710	3,6	61960	3,5	248657	3,6	17093	3,2
TULCEA	94129	1,0	17982	1,0	70775	1,0	5372	1,0
VASLUI	104745	1,1	22067	1,3	73848	1,1	8830	1,7
VALCEA	141061	1,5	28644	1,6	103483	1,5	8934	1,7
VRANCEA	113852	1,2	21515	1,2	87543	1,3	4794	0,9
MUN. BUCURESTI	1889345	20,6	331818	18,9	1439023	20,9	118504	22,3
ILFOV	132027	1,4	29710	1,7	95623	1,4	6694	1,3

Table no. 2

Operations performed in the trade registers during December 1990 – April 2008,  
total by country and counties, share of categories of operations in the total of  
each county

Counties	Total of registered operations		out of which :					
			Registered companies		Changes in statutory documents		Strike off companies	
	No.	%	No.	%	No.	%	No.	%
0	1	2	3	4	5	6	11	12
<b>Total ROMÂNIA</b>	<b>9159151</b>	<b>100,0</b>	<b>1754270</b>	<b>19,2</b>	<b>6872960</b>	<b>75,0</b>	<b>531921</b>	<b>5,8</b>
ALBA	124455	100,0	27674	22,2	91467	73,5	5314	4,3
ARAD	207289	100,0	42944	20,7	153532	74,1	10813	5,2
ARGES	221161	100,0	45153	20,4	166002	75,1	10006	4,5
BACAU	210481	100,0	43826	20,8	154464	73,4	12191	5,8
BIHOR	266236	100,0	53635	20,1	197330	74,1	15271	5,7
BISTRITA-NASAUD	110520	100,0	21390	19,4	82543	74,7	6587	6,0
BOTOSANI	84241	100,0	21568	25,6	56682	67,3	5991	7,1
BRASOV	305009	100,0	54961	18,0	237693	77,9	12355	4,1
BRAILA	120963	100,0	24023	19,9	92883	76,8	4057	3,4
BUZAU	165690	100,0	32050	19,3	122631	74,0	11009	6,6
CARAS-SEVERIN	114062	100,0	21583	18,9	84068	73,7	8411	7,4
CALARASI	76166	100,0	17496	23,0	53744	70,6	4926	6,5
CLUJ	407798	100,0	81766	20,1	311719	76,4	14313	3,5
CONSTANTA	400815	100,0	73264	18,3	301145	75,1	26406	6,6
COVASNA	81372	100,0	14960	18,4	61802	75,9	4610	5,7
DAMBOVITA	136636	100,0	32490	23,8	90417	66,2	13729	10,0
DOLJ	251045	100,0	46043	18,3	192010	76,5	12992	5,2
GALATI	247675	100,0	41593	16,8	191803	77,4	14279	5,8
GIURGIU	66929	100,0	14331	21,4	47446	70,9	5152	7,7
GORJ	131620	100,0	20821	15,8	104205	79,2	6594	5,0
HARGHITA	133679	100,0	27200	20,3	101539	76,0	4940	3,7
HUNEDOARA	179189	100,0	35622	19,9	130731	73,0	12836	7,2
IALOMITA	85532	100,0	16305	19,1	63122	73,8	6105	7,1
IASI	307785	100,0	55090	17,9	240026	78,0	12669	4,1
MARAMURES	188768	100,0	44702	23,7	132860	70,4	11206	5,9
MEHEDINTI	94746	100,0	19625	20,7	67022	70,7	8099	8,5
MURES	255333	100,0	44044	17,2	196697	77,0	14592	5,7
NEAMT	192875	100,0	38371	19,9	139874	72,5	14630	7,6
OLT	115406	100,0	24585	21,3	81447	70,6	9374	8,1
PRAHOVA	316148	100,0	58220	18,4	242135	76,6	15793	5,0
SALAJ	77927	100,0	17141	22,0	55697	71,5	5089	6,5
SATU MARE	147017	100,0	29863	20,3	106631	72,5	10523	7,2
SIBIU	198492	100,0	34071	17,2	155831	78,5	8590	4,3
SUCEAVA	231553	100,0	44513	19,2	169659	73,3	17381	7,5
TELEORMAN	101669	100,0	19651	19,3	77151	75,9	4867	4,8
TIMIS	327710	100,0	61960	18,9	248657	75,9	17093	5,2
TULCEA	94129	100,0	17982	19,1	70775	75,2	5372	5,7
VASLUI	104745	100,0	22067	21,1	73848	70,5	8830	8,4
VALCEA	141061	100,0	28644	20,3	103483	73,4	8934	6,3
VRANCEA	113852	100,0	21515	18,9	87543	76,9	4794	4,2
MUN. BUCURESTI	1889345	100,0	331818	17,6	1439023	76,2	118504	6,3
ILFOV	132027	100,0	29710	22,5	95623	72,4	6694	5,1

Table no.3

Number and structure of incorporations in the trade registers during December 1990- April 2008

Period (year, month)	Registered companies		Percentage	
	No.	%	%	%
0	1	2	3	
<b>Total, 30 April 2008, out of which</b>	<b>1754270</b>	<b>100,00</b>		
Year 1990	81	0,00		
Year 1991	95840	5,46		
Year 1992	137456	7,84		
Year 1993	117078	6,67		
Year 1994	137445	7,83		
Year 1995	65479	3,73		
Year 1996	62089	3,54		
Year 1997	55663	3,17		
Year 1998	63878	3,64		
Year 1999	57197	3,26		
Year 2000	57291	3,27		
Year 2001	61265	3,49		
Year 2002	84780	4,83		
Year 2003	123582	7,04		
Year 2004	144284	8,22		
Year 2005	157375	8,97		
Year 2006	135211	7,71		
Year 2007	144641	8,25		
<b>Year 2008 (I - XII) out of which :</b>	<b>53635</b>			<b>48,6</b>
January	9831			18,3
February	15231			10,5
March	15247			10,5
April	13326			9,2

Note: Column 2 reveals the annual structure of incorporations; column 3 reveals the structure by months during the current year.

Diagram no.1

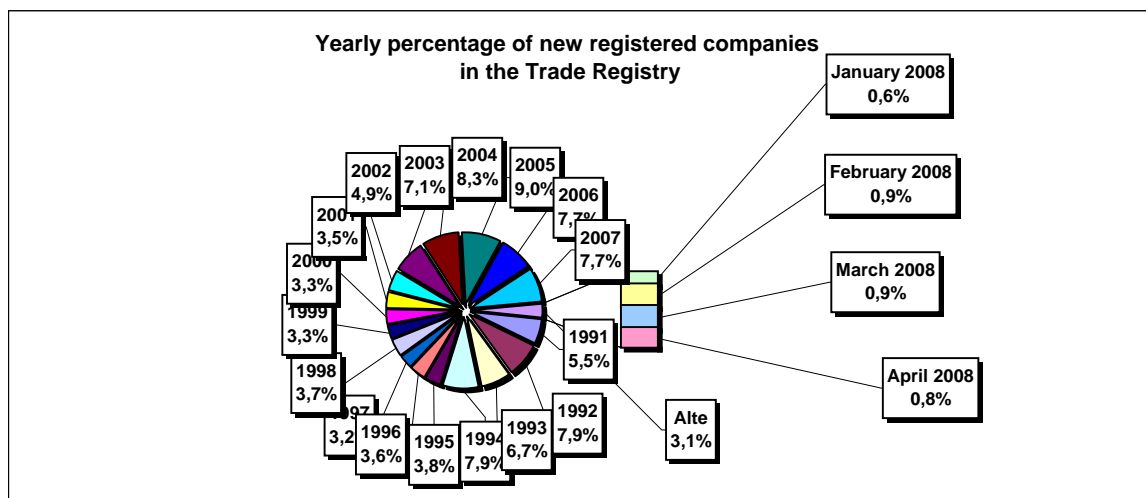


Table no. 4

**Number of incorporations in the trade registers by counties and capital sources during  
December 1990 - April 2008**

Counties	Total		out of which:					Ranking by: *	
			Private capital			State majority capital			Mixed capital (state+private)
			out of which:			out of which:			
			PF+AF	Companies	OC	RA	Companies		Companies
No.	%	No.	No.	No.	No.	No.	No.		
0	1	2	3	4	5	6	7	8	9
<b>Total ROMÂNIA</b>	<b>1754270</b>	<b>100,0</b>	<b>455697</b>	<b>1280842</b>	<b>5398</b>	<b>1351</b>	<b>2376</b>	<b>8606</b>	<b>X</b>
ALBA	27674	1,6	9603	17675	141	38	47	170	25
ARAD	42945	2,4	16256	26129	157	27	41	335	15
ARGES	45153	2,6	14477	30297	168	29	30	152	10
BACAU	43826	2,5	14505	28860	158	35	42	226	14
BIHOR	53635	3,1	13043	40038	146	38	62	308	8
BISTRITA-NASAUD	21390	1,2	7488	13647	98	19	29	109	33
BOTOSANI	21568	1,2	10036	11097	122	21	173	119	31
BRASOV	54961	3,1	11739	42802	114	47	87	172	7
BRAILA	24023	1,4	6209	17478	96	28	45	167	28
BUZAU	32050	1,8	9461	22246	142	28	42	131	21
CARAS-SEVERIN	21583	1,2	7462	13782	102	35	65	137	30
CALARASI	17496	1,0	5141	12079	86	18	77	95	38
CLUJ	81766	4,7	21040	60221	150	52	41	262	2
CONSTANTA	73264	4,2	14305	58111	203	51	51	543	3
COVASNA	14960	0,9	5229	9498	68	24	32	109	41
DAMBOVITA	32490	1,9	14549	17550	134	29	75	153	20
DOLJ	46043	2,6	9593	35987	162	40	58	203	9
GALATI	41593	2,4	8720	32514	135	30	51	143	16
GIURGIU	14331	0,8	3450	10560	80	22	109	110	42
GORJ	20821	1,2	5031	15373	184	50	83	100	34
HARGHITA	27200	1,6	11182	15636	86	23	43	230	26
HUNEDOARA	35622	2,0	9300	25827	81	40	92	282	18
IALOMITA	16305	0,9	6197	9882	74	15	46	91	40
IASI	55090	3,1	15393	39085	164	34	70	344	6
MARAMURES	44702	2,5	17774	26605	124	37	39	123	11
MEHEDINTI	19625	1,1	6350	13049	82	19	27	98	36
MURES	44044	2,5	16238	27418	156	30	34	168	13
NEAMT	38371	2,2	14225	23760	162	29	30	165	17
OLT	24585	1,4	9586	14625	161	26	64	123	27
PRAHOVA	58220	3,3	18012	39638	177	50	72	271	5
SALAJ	17141	1,0	6704	10220	107	19	28	63	39
SATU MARE	29863	1,7	9937	19643	88	19	42	134	22
SIBIU	34071	1,9	8499	25153	119	34	108	158	19
SUCEAVA	44513	2,5	21099	22898	202	30	64	220	12
TELEORMAN	19651	1,1	6805	12446	152	21	45	182	35
TIMIS	61960	3,5	10130	51235	140	38	69	348	4
TULCEA	17982	1,0	6400	11244	66	18	42	212	37
VASLUI	22067	1,3	10521	11245	109	16	41	135	29
VALCEA	28644	1,6	11182	17104	168	40	37	113	24
VRANCEA	21515	1,2	6503	14751	104	16	27	114	32
MUN. BUCURESTI	331817	18,9	22639	307703	138	115	103	1119	1
ILFOV	29710	1,7	3684	25731	92	21	13	169	23

\*) The total number of incorporations (col 1)

Table no. 5

**Number of incorporations in the trade registers by counties and business categories during  
December 1990 – April 2008**

County	Total		out of which:						RA	OC
			PF+AF	companies: 1291824						
	No.	%		No.	SNC	SCS	SRL	SA	No.	No.
			No.		No.	No.	No.			
0	1	2	3	4	5	6	7	8	9	
<b>Total ROMÂNIA</b>	<b>1754270</b>	<b>100,0</b>	<b>455697</b>	<b>32665</b>	<b>1584</b>	<b>1224704</b>	<b>32865</b>	<b>1351</b>	<b>5398</b>	
ALBA	27674	1,6	9603	890	11	16428	563	38	141	
ARAD	42944	2,4	16256	53	12	25756	682	27	157	
ARGES	45153	2,6	14477	107	15	29526	831	29	168	
BACAU	43826	2,5	14505	1299	4	27089	735	35	158	
BIHOR	53635	3,1	13043	126	47	39326	909	38	146	
BISTRITA-NASAUD	21390	1,2	7488	146	21	13200	418	19	98	
BOTOSANI	21568	1,2	10036	468	1	10465	455	21	122	
BRASOV	54961	3,1	11739	239	20	41936	866	47	114	
BRAILA	24023	1,4	6209	376	12	16780	522	28	96	
BUZAU	32050	1,8	9461	3747	46	18044	582	28	142	
CARAS-SEVERIN	21583	1,2	7462	117	9	13387	471	35	102	
CALARASI	17496	1,0	5141	609	3	11282	357	18	86	
CLUJ	81766	4,7	21040	2112	18	57087	1307	52	150	
CONSTANTA	73264	4,2	14305	311	23	56881	1490	51	203	
COVASNA	14960	0,9	5229	148	4	9188	299	24	68	
DAMBOVITA	32490	1,9	14549	60	8	17217	493	29	134	
DOLJ	46043	2,6	9593	1560	8	33790	890	40	162	
GALATI	41593	2,4	8720	1574	6	30281	847	30	135	
GIURGIU	14331	0,8	3450	35	8	10411	325	22	80	
GORJ	20821	1,2	5031	29	1	15035	491	50	184	
HARGHITA	27200	1,6	11182	62	7	15349	491	23	86	
HUNEDOARA	35622	2,0	9300	1166	98	24262	675	40	81	
IALOMITA	16305	0,9	6197	266	11	9393	349	15	74	
IASI	55090	3,1	15393	507	111	37865	1014	34	164	
MARAMURES	44702	2,5	17774	1927	23	24220	596	37	124	
MEHEDINTI	19625	1,1	6350	427	3	12412	332	19	82	
MURES	44044	2,5	16238	37	34	26875	674	30	156	
NEAMT	38371	2,2	14225	3293	30	19958	674	29	162	
OLT	24585	1,4	9586	1611	1	12705	495	26	161	
PRAHOVA	58220	3,3	18012	3122	15	35935	909	50	177	
SALAJ	17141	1,0	6704	600	4	9415	292	19	107	
SATU MARE	29863	1,7	9937	283	6	19052	478	19	88	
SIBIU	34071	1,9	8499	777	49	23928	665	34	119	
SUCEAVA	44513	2,5	21099	438	8	22146	590	30	202	
TELEORMAN	19651	1,1	6805	272	399	11578	424	21	152	
TIMIS	61960	3,5	10130	612	29	49746	1265	38	140	
TULCEA	17982	1,0	6400	1363	114	9540	481	18	66	
VASLUI	22067	1,3	10521	90	13	10903	415	16	109	
VALCEA	28644	1,6	11182	364	6	16394	490	40	168	
VRANCEA	21515	1,2	6503	356	10	14073	453	16	104	
MUN. BUCURESTI	331818	18,9	22639	1037	304	300633	6951	115	138	
ILFOV	29710	1,7	3684	49	32	25213	619	21	92	

Table no. 6

**Operations performed in the trade registers by counties and categories of registration in the month of April 2008**

County	Total of operations carried on		out of which:					
			New incorporations		Changes in statutory documents		Strike off companies	
	No.	%	No.	%	No.	%	No.	%
0	1	2	3	4	5	6	9	10
<b>Total ROMÂNIA</b>	<b>194597</b>	<b>100,0</b>	<b>13326</b>	<b>6,8</b>	<b>177894</b>	<b>91,4</b>	<b>3377</b>	<b>1,7</b>
ALBA	2258	100,0	213	9,4	1988	88,0	57	2,5
ARAD	2308	100,0	297	12,9	1945	84,3	66	2,9
ARGES	6731	100,0	353	5,2	6303	93,6	75	1,1
BACAU	3936	100,0	332	8,4	3555	90,3	49	1,2
BIHOR	2468	100,0	452	18,3	1918	77,7	98	4,0
BISTRITA-NASAUD	1588	100,0	157	9,9	1385	87,2	46	2,9
BOTOSANI	1703	100,0	160	9,4	1474	86,6	69	4,1
BRASOV	7611	100,0	468	6,1	6878	90,4	265	3,5
BRAILA	3647	100,0	168	4,6	3443	94,4	36	1,0
BUZAU	2976	100,0	231	7,8	2693	90,5	52	1,7
CARAS-SEVERIN	2104	100,0	130	6,2	1955	92,9	19	0,9
CALARASI	1973	100,0	109	5,5	1847	93,6	17	0,9
CLUJ	8887	100,0	886	10,0	7769	87,4	232	2,6
CONSTANTA	9649	100,0	534	5,5	9018	93,5	97	1,0
COVASNA	1602	100,0	133	8,3	1444	90,1	25	1,6
DAMBOVITA	2654	100,0	266	10,0	2343	88,3	45	1,7
DOLJ	3323	100,0	322	9,7	2928	88,1	73	2,2
GALATI	4380	100,0	326	7,4	3982	90,9	72	1,6
GIURGIU	5039	100,0	125	2,5	4899	97,2	15	0,3
GORJ	8429	100,0	146	1,7	8219	97,5	64	0,8
HARGHITA	3125	100,0	244	7,8	2815	90,1	66	2,1
HUNEDOARA	2835	100,0	215	7,6	2545	89,8	75	2,6
IALOMITA	4672	100,0	130	2,8	4461	95,5	81	1,7
IASI	6702	100,0	548	8,2	5950	88,8	204	3,0
MARAMURES	3875	100,0	326	8,4	3491	90,1	58	1,5
MEHEDINTI	1881	100,0	115	6,1	1732	92,1	34	1,8
MURES	5032	100,0	329	6,5	4639	92,2	64	1,3
NEAMT	4225	100,0	272	6,4	3895	92,2	58	1,4
OLT	1506	100,0	149	9,9	1320	87,6	37	2,5
PRAHOVA	5687	100,0	454	8,0	5009	88,1	224	3,9
SALAJ	1651	100,0	141	8,5	1458	88,3	52	3,1
SATU MARE	2674	100,0	278	10,4	2335	87,3	61	2,3
SIBIU	6641	100,0	254	3,8	6309	95,0	78	1,2
SUCEAVA	2855	100,0	324	11,3	2449	85,8	82	2,9
TELEORMAN	2834	100,0	156	5,5	2637	93,0	41	1,4
TIMIS	5563	100,0	539	9,7	4944	88,9	80	1,4
TULCEA	2260	100,0	101	4,5	2114	93,5	45	2,0
VASLUI	2361	100,0	128	5,4	2206	93,4	27	1,1
VALCEA	2717	100,0	164	6,0	2469	90,9	84	3,1
VRANCEA	2285	100,0	179	7,8	2062	90,2	44	1,9
MUN. BUCURESTI	36323	100,0	2110	5,8	33841	93,2	372	1,0
ILFOV	3627	100,0	362	10,0	3227	89,0	38	1,0

\*) by effect of implementation of Law no. 314/2001, art.1 and art. 6

Table no.7

**Number of incorporations in the trade registers by counties and capital sources in the month of April 2008**

County	Total		out of which:					Rnking by: *	
			Private capital			State majority capital			Mixed capital (state+priva)
			out of which:			out of which:			
			PF+AF	Companies	OC	RA	Companie s		Companie s
No.	%	No.	No.	No.	No.	No.	No.		
0	1	2	3	4	5	6	7	8	9
<b>Total ROMÂNIA</b>	<b>13326</b>	<b>100,0</b>	<b>4361</b>	<b>8959</b>	<b>1</b>		<b>1</b>	<b>4</b>	<b>X</b>
ALBA	213	1,6	88	125					25
ARAD	297	2,2	131	166					17
ARGES	353	2,6	135	217			1		10
BACAU	332	2,5	122	210					11
BIHOR	452	3,4	162	290					8
BISTRITA-NASAUD	157	1,2	42	115					30
BOTOSANI	160	1,2	84	76					29
BRASOV	468	3,5	154	313				1	6
BRAILA	168	1,3	77	91					27
BUZAU	231	1,7	89	142					23
CARAS-SEVERIN	130	1,0	47	83					36
CALARASI	109	0,8	32	77					41
CLUJ	886	6,6	272	614					2
CONSTANTA	534	4,0	150	384					5
COVASNA	133	1,0	66	67					35
DAMBOVITA	266	2,0	104	162					20
DOLJ	322	2,4	118	204					16
GALATI	326	2,4	110	216					13
GIURGIU	125	0,9	42	83					39
GORJ	146	1,1	53	93					33
HARGHITA	244	1,8	129	114				1	22
HUNEDOARA	215	1,6	65	150					24
IALOMITA	130	1,0	40	90					37
IASI	548	4,1	205	343					3
MARAMURES	326	2,4	124	202					14
MEHEDINTI	115	0,9	44	71					40
MURES	329	2,5	132	197					12
NEAMT	272	2,0	131	140	1				19
OLT	149	1,1	50	99					32
PRAHOVA	454	3,4	166	288					7
SALAJ	141	1,1	68	73					34
SATU MARE	278	2,1	137	141					18
SIBIU	254	1,9	77	177					21
SUCEAVA	324	2,4	143	181					15
TELEORMAN	156	1,2	60	96					31
TIMIS	539	4,0	118	421					4
TULCEA	101	0,8	53	48					42
VASLUI	128	1,0	42	86					38
VALCEA	164	1,2	57	107					28
VRANCEA	179	1,3	64	115					26
MUN. BUCURESTI	2110	15,8	334	1776					1
ILFOV	362	2,7	44	316				2	9

\*) The total number of incorporations (col 1)

\*\*\* Less than 0,01%

Table no.8

**Number of incorporations in the trade registers by counties and business categories  
in the month of April 2008**

County	Total		out of which:						
			PF+AF	companies: 8964				RA	OC
	SNC	SCS		SRL	SA	No.	No.		
	No.	%	No.	No.	No.			No.	No.
0	1	2	3	4	5	6	7	8	9
<b>Total ROMÂNIA</b>	<b>13326</b>	<b>100,0</b>	<b>4361</b>		<b>3</b>	<b>8886</b>	<b>75</b>		<b>1</b>
ALBA	213	1,6	88			125			
ARAD	297	2,2	131			165	1		
ARGES	353	2,6	135			216	2		
BACAU	332	2,5	122			209	1		
BIHOR	452	3,4	162			289	1		
BISTRITA-NASAUD	157	1,2	42			115			
BOTOSANI	160	1,2	84			76			
BRASOV	468	3,5	154			313	1		
BRAILA	168	1,3	77			91			
BUZAU	231	1,7	89			139	3		
CARAS-SEVERIN	130	1,0	47			82	1		
CALARASI	109	0,8	32			76	1		
CLUJ	886	6,6	272			612	2		
CONSTANTA	534	4,0	150			383	1		
COVASNA	133	1,0	66			67			
DAMBOVITA	266	2,0	104			161	1		
DOLJ	322	2,4	118			203	1		
GALATI	326	2,4	110			213	3		
GIURGIU	125	0,9	42			82	1		
GORJ	146	1,1	53			92	1		
HARGHITA	244	1,8	129			114	1		
HUNEDOARA	215	1,6	65			150			
IALOMITA	130	1,0	40			89	1		
IASI	548	4,1	205			342	1		
MARAMURES	326	2,4	124			201	1		
MEHEDINTI	115	0,9	44			71			
MURES	329	2,5	132			195	2		
NEAMT	272	2,0	131			140			1
OLT	149	1,1	50			97	2		
PRAHOVA	454	3,4	166		1	286	1		
SALAJ	141	1,1	68			73			
SATU MARE	278	2,1	137			141			
SIBIU	254	1,9	77			177			
SUCEAVA	324	2,4	143			181			
TELEORMAN	156	1,2	60			92	4		
TIMIS	539	4,0	118			419	2		
TULCEA	101	0,8	53			47	1		
VASLUI	128	1,0	42		1	84	1		
VALCEA	164	1,2	57			106	1		
VRANCEA	179	1,3	64			112	3		
MUN. BUCURESTI	2110	15,8	334			1746	30		
ILFOV	362	2,7	44		1	314	3		

Table no. 9

**Number of incorporations in the trade registers by domains of activity and business categories in the month of April 2008**

CAEN segment	Field of activity	Total		out of which:						
				PF+AF	companies: 8964				RA	OC
					SNC	SCS	SRL	SA		
					No.	No.	No.	No.		
0	1	2	3	4	5	6	7	8	9	10
	<b>Total ROMANIA</b>	<b>13326</b>	<b>100,0</b>	<b>4361</b>		<b>3</b>	<b>8886</b>	<b>75</b>		<b>1</b>
1	Agriculture, hunting and related service activities	452	3,4	271			181			
2	Forestry and logging	58	0,4	16			42			
3	Fishing and aquaculture	97	0,7	80			16	1		
5	Mining of hard and brown coal	2	0,0				2			
6	Extraction of crude petroleum and natural gas									
7	Mining of metal ores									
8	Other mining and quarrying	22	0,2	1			21			
9	Mining support service activities	11	0,1	5			6			
10	Manufacture of food products	105	0,8	30			73	2		
11	Manufacture of beverages	26	0,2	10			15	1		
12	Manufacture of tobacco products									
13	Manufacture of textiles	23	0,2	13			10			
14	Manufacture of wearing apparel	76	0,6	21			55			
15	Tanning and dressing of leather; manufacture of luggage, handbags, saddlery, harness and footwear; dressing and dyeing of fur	16	0,1	5			11			
16	Manufacture of wood and of products of wood and cork, except furniture; manufacture of articles of straw and plaiting materials	125	0,9	55			70			
17	Manufacture of paper and paper products	4	0,0				4			
18	Printing and reproduction of recorded media	30	0,2	7			21	2		
19	Manufacture of coke and refined petroleum products	1	0,0					1		
20	Manufacture of chemicals and chemical products	7	0,1				6	1		
21	Manufacture of basic pharmaceutical products and pharmaceutical preparations									
22	Manufacture of rubber and plastic products	50	0,4	7		1	42			
23	Manufacture of other non-metallic mineral products	66	0,5	22			44			
24	Manufacture of basic metals	5	0,0	1			4			
25	Manufacture of fabricated metal products, except machinery and equipment	135	1,0	60			74	1		
26	Manufacture of computer, electronic and optical products	12	0,1	2			10			
27	Manufacture of electrical equipment	3	0,0	1			2			
28	Manufacture of machinery and equipment n.e.c.	7	0,1	1			6			
29	Manufacture of motor vehicles, trailers and semi-trailers	6	0,0				6			
30	Manufacture of other transport equipment	9	0,1				9			
31	Manufacture of furniture	93	0,7	23			70			
32	Other manufacturing	33	0,2	15		1	17			
33	Repair and installation of machinery and equipment	53	0,4	25			28			
35	Electricity, gas, steam and air conditioning supply	24	0,2				21	3		
36	Water collection, treatment and supply	8	0,1				3	5		
37	Sewerage	5	0,04				5			
38	Waste collection, treatment and disposal activities; materials recovery	59	0,44	7			50	2		
39	Remediation activities and other waste management services									
41	Construction of buildings	1460	10,96	153			1306	1		
42	Civil engineering	70	0,53	9			57	4		
43	Specialised construction activities	924	6,93	388			534	2		
45	Wholesale and retail trade and repair of motor vehicles and motorcycles	344	2,58	54			290			
46	Wholesale trade, except of motor vehicles and motorcycles	1189	8,92	281			906	2		
47	Retail trade, except of motor vehicles and motorcycles	2140	16,06	861			1277	2		
49	Land transport and transport via pipelines	792	5,94	289			502	1		
50	Water transport	1	0,01	1						

Table no. 9  
(continuance)

Number of incorporations in the trade registers by domains of activity and business categories in the month of March 2008

CAEN segment	Field of activity	Total		out of which:						
				PF+AF	companies: 8964				RA	OC
		SNC	SCS		SRL	SA				
		No.	%		No.	No.	No.	No.		
0	1	2	3	4	5	6	7	8	9	10
	<b>Total ROMÂNIA</b>	<b>13326</b>	<b>100,0</b>	<b>4361</b>		<b>3</b>	<b>8886</b>	<b>75</b>		<b>1</b>
51	Air transport	1	0,0				1			
52	Warehousing and support activities for transportation	42	0,3	8			34			
53	Postal and courier activities	33	0,2	19			14			
55	Accommodation	164	1,2	46			118			
56	Food and beverage service activities	378	2,8	42			336			
58	Publishing activities	40	0,3	15			24	1		
59	Motion picture, video and television programme production, sound recording and music publishing activities	40	0,3	7			33			
60	Programming and broadcasting activities	6	0,0				6			
61	Telecommunications	46	0,3	11			35			
62	Computer programming, consultancy and related activities	299	2,2	189			110			
63	Information service activities	106	0,8	51			55			
64	Financial service activities, except insurance and pension funding	63	0,5	10			25	28		
65	Insurance, reinsurance and pension funding, except compulsory social security	1	0,0					1		
66	Activities auxiliary to financial services and insurance activities	156	1,2	27			126	3		
68	Real estate activities	431	3,2	25			399	7		
69	Legal and accounting activities	105	0,8	10			95			
70	Activities of head offices; management consultancy	445	3,3	81			363	1		
71	Architectural and engineering activities; technical testing and analysis	353	2,6	109			243	1		
72	Scientific research and development	16	0,1	4			11	1		
73	Advertising and market research	184	1,4	23			161			
74	Other professional, scientific and technical activities	293	2,2	191			102			
75	Veterinary activities	22	0,2	6			16			
77	Rental and leasing activities	54	0,4	3			51			
78	Employment activities	69	0,5	2			67			
79	Travel agency, tour operator and other reservation service and related activities	49	0,4	9			40			
80	Security and investigation activities	42	0,3	3			38	1		
81	Services to buildings and landscape activities	101	0,8	19			82			
82	Office administrative, office support and other business support activities	274	2,1	193			81			
84	Public administration and defence; compulsory social security	3	0,0	2			1			
85	Education	262	2,0	205		1	56			
86	Human health activities	119	0,9	9			110			
87	Residential care activities	2	0,0				2			
88	Social work activities without accommodation	4	0,0	2			2			
90	Creative, arts and entertainment activities	79	0,6	53			26			
91	Libraries, archives, museums and other cultural activities	5	0,0	3			2			
92	Gambling and betting activities	31	0,2	1			30			
93	Sports activities and amusement and recreation activities	62	0,5	19			43			
94	Activities of membership organisations									
95	Repair of computers and personal and household goods	84	0,6	47			37			
96	Other personal service activities	314	2,4	199			114			1
97	Activities of households as employers of domestic personnel	3	0,0	2			1			
98	Undifferentiated goods- and services-producing activities of private households for own use	1	0,0	1						
99	Activities of extraterritorial organisations and bodies	1	0,0	1						

Table no. 10

**Number of incorporated trading companies and the value of the subscribed share capital, by counties, in the month of April 2008**

County	Total registered companies		Subscribed capital		Average subscribed capital on company
	No.	%	thousand Lei	%	thousand Lei
0	1	2	3	4	5
<b>Total ROMÂNIA</b>	<b>8964</b>	<b>100,0</b>	<b>365488,9</b>	<b>100,0</b>	<b>41,0</b>
ALBA	125	1,4	68,5	0,0	0,5
ARAD	166	1,9	201,1	0,1	1,2
ARGES	218	2,4	760,3	0,2	3,5
BACAU	210	2,3	2149,6	0,6	10,3
BIHOR	290	3,2	436,4	0,1	1,5
BISTRITA-NASAUD	115	1,3	13632,6	3,7	118,5
BOTOSANI	76	0,8	55,2	0,0	0,7
BRASOV	314	3,5	10539,3	2,9	33,7
BRAILA	91	1,0	60,3	0,0	0,7
BUZAU	142	1,6	1289,3	0,4	9,2
CARAS-SEVERIN	83	0,9	123,5	0,0	1,5
CALARASI	77	0,9	207,6	0,1	2,7
CLUJ	614	6,8	20467,9	5,6	33,4
CONSTANTA	384	4,3	1569,5	0,4	4,1
COVASNA	67	0,7	115,9	0,0	1,8
DAMBOVITA	162	1,8	6701,5	1,8	41,6
DOLJ	204	2,3	247,3	0,1	1,2
GALATI	216	2,4	822,3	0,2	3,8
GIURGIU	83	0,9	47,5	0,0	0,6
GORJ	93	1,0	5426,7	1,5	58,4
HARGHITA	115	1,3	285,8	0,1	2,5
HUNEDOARA	150	1,7	123,2	0,0	0,8
IALOMITA	90	1,0	435,9	0,1	4,9
IASI	343	3,8	597,1	0,2	1,7
MARAMURES	202	2,3	1380,5	0,4	6,9
MEHEDINTI	71	0,8	17,2	***	0,2
MURES	197	2,2	1150,4	0,3	5,9
NEAMT	140	1,6	211,3	0,1	1,5
OLT	99	1,1	1922,2	0,5	19,6
PRAHOVA	288	3,2	3898,4	1,1	13,6
SALAJ	73	0,8	70,3	0,0	1,0
SATU MARE	141	1,6	167,3	0,0	1,2
SIBIU	177	2,0	751,7	0,2	4,3
SUCEAVA	181	2,0	844,6	0,2	4,7
TELEORMAN	96	1,1	505,0	0,1	5,4
TIMIS	421	4,7	2868,9	0,8	6,8
TULCEA	48	0,5	18553,4	5,1	386,5
VASLUI	86	1,0	209,1	0,1	2,4
VALCEA	107	1,2	2083,5	0,6	19,7
VRANCEA	115	1,3	63,7	0,0	0,6
MUN. BUCURESTI	1776	19,8	189690,7	51,9	107,5
ILFOV	318	3,5	74736,4	20,4	235,0

Table no. 11

**Number of incorporated trading companies and the value of the subscribed share capital by legal forms, in the month of April 2008**

Company type	Total registered companies		Subscribed capital		Average subscribed capital on company
	No.	%	thousand Lei	%	thousand Lei
0	1	2	3	4	5
<b>Total ROMÂNIA</b>	<b>8964</b>	<b>100,0</b>	<b>365488,9</b>	<b>100,0</b>	<b>41,0</b>
<b>SNC</b>	3	0,0	1,4	***	0,5
<b>SCS</b>	75	0,8	138337,8	37,9	3293,8
<b>SRL</b>	8886	99,1	227149,7	62,1	25,6
<b>SCA</b>					

*Note: The average does not include filials because according to the Law no.31/1990 they are not juridical persons*

\*\*\* Less than 0,01%

Diagram no.5

