



MINISTRY OF JUSTICE

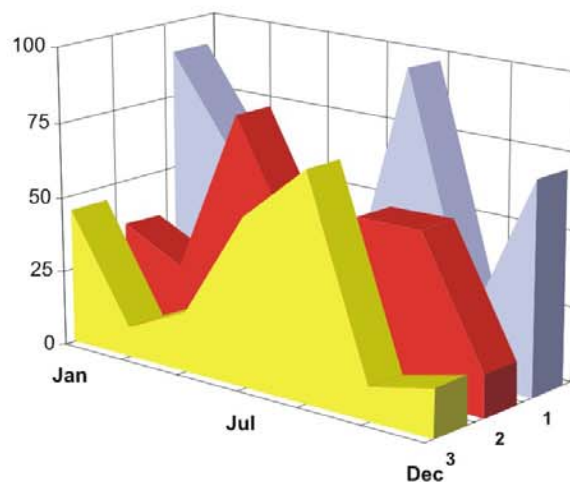
THE NATIONAL TRADE REGISTER OFFICE

București, Bd. Unirii nr. 74, Bl. J3b, tronson II+III, sector 3; Telefon: +40 21 316.08.04, 316.08.10; Fax: +40 21 316.08.03; Cod poștal: 030837
Website: www.onrc.ro; E-mail: onrc@onrc.ro; Cod identificare Fiscală: 14942091

PROCEEDINGS IN THE CENTRAL TRADE REGISTER

STATISTICAL SYNTHESIS

OF
RECORDS IN THE CENTRAL TRADE REGISTER
- the 31th of March 2008 - provisional data -



- ISSUE No. 196 -

**MINISTRY OF JUSTICE
THE NATIONAL TRADE REGISTER OFFICE**

- Operations such as incorporation of trading companies, submission of changes, and strike-off are carried out based on Law No.26/1990, as republished, Law No.31/1990, as republished and on the Methodological Norms no. P/608/1998.

- This work reflects the evolution of the operations with the Trade Register Office attached to Bucharest Law Court and the Trade Register Offices attached to County Law Courts.

- The data contained in the Central Trade Register refer to operations for which law sets out the obligation of being registered in the trade registers kept by the 42 trade register offices attached to law courts.

• The content of this publication shall not be reproduced, partly or entirely, in original or modified form, and shall not be stored in a recovery system and shall not be transmitted in any form or by any means without prior written authorization of the Ministry of Justice – The National Trade Register Office.

• The content of this publication may be used in articles, studies, books, as supporting or explanatory data only by clearly and accurately indicating the source.

CONTENTS

Page

1	Definitions	1
2.1	Data related to December 1990 –March 2008	3
Table no.1 – Operations performed in the trade registers by categories of registration during December 1990 –March 2008, total by country and by counties, share of counties in the total by country		3
Table no.2 – Operations performed in the trade registers during December 1990 –March 2008, total by country and counties, share of categories of operations in the total of each county		4
Table no. 3 – Number and structure of incorporations in the trade registers during December 1990-March 2008		5
Diagram no. 1 - Yearly percentage of new registered companies in the Trade Registry		
Table no. 4 – Number of incorporations in the trade registers by counties and capital sources during December 1990 - March 2008		6
Table no. 5 – Number of incorporations in the trade registers by counties and business categories during December 1990 –March 2008		7
2.2	Data related to March 2008	8
Table no. 6 – Operations performed in the trade registers by counties and categories of registration in the month of March 2008		8
Table no. 7 – Number of incorporations in the trade registers by counties and capital sources in the month of March 2008		9
Table no. 8 – Number of incorporations in the trade registers by counties and business categories in the month of March 2008		10
Table no. 9 –Number of incorporations in the trade registers by domains of activity and business categories in the month of March 2008		11-12
Table no. 10 – Number of incorporated trading companies and the value of the subscribed share capital, by counties, in the month of March 2008		13
Table no. 11– Number of incorporated trading companies and the value of the subscribed share capital by legal forms, in the month of March 2008		14
Chart no. 5 – Average value of the subscribed share capital by types of trading companies in the month of March 2008		14

Definitions

The Trade Register Office was established based on Law No. 26/1990, as republished and subsequently amended and supplemented, operates as an active institution as of December 1990 and is twofold structured:

- at national level, represented by the National Trade Register Office organized under the authority of the Ministry of Justice
- at local level, represented by the 42 Trade Register Offices attached to Law Courts, organized under the subordination of the National Trade Register Office

The business categories subject to registration in the trade register are:

- natural persons and family associations usually carrying on trading activities, trading companies, national companies, autonomous administrations, and co-operative organizations
- branches registered as trading companies with legal personality, having the setting-up, operation and incorporation legal regime of the type of legal form.

- **Terms used in tables and charts**

- **Number of companies:** depending on the table, the number of companies incorporated during the reference period, the number of companies struck-off from the trade register.

- **Value of subscribed share capital:**

- **total, in national currency:** the share capital value resulted by adding up the subscribed values (in cash and in kind) in national currency (lei)

- **Regions of economic development:**

<i>North-East:</i>	Suceava, Botoșani, Neamț, Iași, Bacău, Vaslui.
<i>South-East:</i>	Vrancea, Galați, Buzău, Brăila, Tulcea, Constanța.
<i>South-Muntenia:</i>	Argeș, Dâmbovița, Prahova, Teleorman, Giurgiu, Călărași, Ialomița.
<i>South-West Oltenia:</i>	Gorj, Vâlcea, Dolj, Mehedinți, Olt.
<i>West:</i>	Arad, Caraș-Severin, Hunedoara, Timiș.
<i>North-West:</i>	Bihor, Bistrița, Cluj, Satu Mare, Sălaj, Maramureș.
<i>Center:</i>	Alba, Brașov, Covasna, Harghita, Mureș, Sibiu.
<i>Bucharest-Ilfov:</i>	București, Ilfov.

NACE Code – The Classification of Economic Activities in the European Community was approved by GO No. 656/1997, amended by Order No 601/2002 and by Order no. 337/2007 of the President of the National Institute of Statistics, and complies with the international classification used in statistic reports and official documents. Activities are ranked by the harmonization principle by sections, divisions, groups and classes.

Abbreviations

- **PF** - Authorized Natural Person
- **AF** - Family Association
- **SNC** - General Partnership
- **SCS** - Limited Partnership
- **SA** - Joint-Stock Company
- **SRL** - Limited Liability Company
- **RA** - Autonomous Administration
- **OC** - Co-operative Organization

Sources of Information:

The integrated IT system of the trade register is designed by The National Trade Register Office in compliance with the provisions of the related legislation in force. The source of information consists of the trade registers organized in a computerized system, kept by the trade register offices attached to law courts.

Table no. 1

**Operations performed in the trade registers by categories of registration during
December 1990 – March 2008, total by country and by counties, share of counties in
the total by country**

Counties	Total of registered operations		out of which :					
			Registered companies		Changes in statutory documents		Strike off companies	
	No.	%	No.	%	No.	%	No.	%
0	1	2	3	4	5	6	11	12
Total ROMÂNIA	9140460	100,0	1740944	100,0	6870972	100,0	528544	100,0
ALBA	122197	1,3	27461	1,6	89479	1,3	5257	1,0
ARAD	206926	2,3	42647	2,4	153532	2,2	10747	2,0
ARGES	220733	2,4	44800	2,6	166002	2,4	9931	1,9
BACAU	210100	2,3	43494	2,5	154464	2,2	12142	2,3
BIHOR	265686	2,9	53183	3,1	197330	2,9	15173	2,9
BISTRITA-NASAUD	110317	1,2	21233	1,2	82543	1,2	6541	1,2
BOTOSANI	84012	0,9	21408	1,2	56682	0,8	5922	1,1
BRASOV	304276	3,3	54493	3,1	237693	3,5	12090	2,3
BRAILA	120759	1,3	23855	1,4	92883	1,4	4021	0,8
BUZAU	165407	1,8	31819	1,8	122631	1,8	10957	2,1
CARAS-SEVERIN	113913	1,2	21453	1,2	84068	1,2	8392	1,6
CALARASI	76040	0,8	17387	1,0	53744	0,8	4909	0,9
CLUJ	406680	4,4	80880	4,6	311719	4,5	14081	2,7
CONSTANTA	400184	4,4	72730	4,2	301145	4,4	26309	5,0
COVASNA	81214	0,9	14827	0,9	61802	0,9	4585	0,9
DAMBOVITA	136325	1,5	32224	1,9	90417	1,3	13684	2,6
DOLJ	250650	2,7	45721	2,6	192010	2,8	12919	2,4
GALATI	247277	2,7	41267	2,4	191803	2,8	14207	2,7
GIURGIU	66789	0,7	14206	0,8	47446	0,7	5137	1,0
GORJ	131410	1,4	20675	1,2	104205	1,5	6530	1,2
HARGHITA	133369	1,5	26956	1,5	101539	1,5	4874	0,9
HUNEDOARA	178899	2,0	35407	2,0	130731	1,9	12761	2,4
IALOMITA	85321	0,9	16175	0,9	63122	0,9	6024	1,1
IASI	307033	3,4	54542	3,1	240026	3,5	12465	2,4
MARAMURES	188384	2,1	44376	2,5	132860	1,9	11148	2,1
MEHEDINTI	94597	1,0	19510	1,1	67022	1,0	8065	1,5
MURES	254940	2,8	43715	2,5	196697	2,9	14528	2,7
NEAMT	192545	2,1	38099	2,2	139874	2,0	14572	2,8
OLT	115220	1,3	24436	1,4	81447	1,2	9337	1,8
PRAHOVA	315470	3,5	57766	3,3	242135	3,5	15569	2,9
SALAJ	77734	0,9	17000	1,0	55697	0,8	5037	1,0
SATU MARE	146678	1,6	29585	1,7	106631	1,6	10462	2,0
SIBIU	198160	2,2	33817	1,9	155831	2,3	8512	1,6
SUCEAVA	231147	2,5	44189	2,5	169659	2,5	17299	3,3
TELEORMAN	101472	1,1	19495	1,1	77151	1,1	4826	0,9
TIMIS	327091	3,6	61421	3,5	248657	3,6	17013	3,2
TULCEA	93983	1,0	17881	1,0	70775	1,0	5327	1,0
VASLUI	104590	1,1	21939	1,3	73848	1,1	8803	1,7
VALCEA	140813	1,5	28480	1,6	103483	1,5	8850	1,7
VRANCEA	113629	1,2	21336	1,2	87543	1,3	4750	0,9
MUN. BUCURESTI	1886863	20,6	329708	18,9	1439023	20,9	118132	22,4
ILFOV	131627	1,4	29348	1,7	95623	1,4	6656	1,3

Table no. 2

Operations performed in the trade registers during December 1990 – Match 2008, total by country and counties, share of categories of operations in the total of each county

Counties	Total of registered operations		out of which :					
			Registered companies		Changes in statutory documents		Strike off companies	
	No.	%	No.	%	No.	%	No.	%
0	1	2	3	4	5	6	11	12
Total ROMÂNIA	9140460	100,0	1740944	19,0	6870972	75,2	528544	5,8
ALBA	122197	100,0	27461	22,5	89479	73,2	5257	4,3
ARAD	206926	100,0	42647	20,6	153532	74,2	10747	5,2
ARGES	220733	100,0	44800	20,3	166002	75,2	9931	4,5
BACAU	210100	100,0	43494	20,7	154464	73,5	12142	5,8
BIHOR	265686	100,0	53183	20,0	197330	74,3	15173	5,7
BISTRITA-NASAUD	110317	100,0	21233	19,2	82543	74,8	6541	5,9
BOTOSANI	84012	100,0	21408	25,5	56682	67,5	5922	7,0
BRASOV	304276	100,0	54493	17,9	237693	78,1	12090	4,0
BRAILA	120759	100,0	23855	19,8	92883	76,9	4021	3,3
BUZAU	165407	100,0	31819	19,2	122631	74,1	10957	6,6
CARAS-SEVERIN	113913	100,0	21453	18,8	84068	73,8	8392	7,4
CALARASI	76040	100,0	17387	22,9	53744	70,7	4909	6,5
CLUJ	406680	100,0	80880	19,9	311719	76,6	14081	3,5
CONSTANTA	400184	100,0	72730	18,2	301145	75,3	26309	6,6
COVASNA	81214	100,0	14827	18,3	61802	76,1	4585	5,6
DAMBOVITA	136325	100,0	32224	23,6	90417	66,3	13684	10,0
DOLJ	250650	100,0	45721	18,2	192010	76,6	12919	5,2
GALATI	247277	100,0	41267	16,7	191803	77,6	14207	5,7
GIURGIU	66789	100,0	14206	21,3	47446	71,0	5137	7,7
GORJ	131410	100,0	20675	15,7	104205	79,3	6530	5,0
HARGHITA	133369	100,0	26956	20,2	101539	76,1	4874	3,7
HUNEDOARA	178899	100,0	35407	19,8	130731	73,1	12761	7,1
IALOMITA	85321	100,0	16175	19,0	63122	74,0	6024	7,1
IASI	307033	100,0	54542	17,8	240026	78,2	12465	4,1
MARAMURES	188384	100,0	44376	23,6	132860	70,5	11148	5,9
MEHEDINTI	94597	100,0	19510	20,6	67022	70,9	8065	8,5
MURES	254940	100,0	43715	17,1	196697	77,2	14528	5,7
NEAMT	192545	100,0	38099	19,8	139874	72,6	14572	7,6
OLT	115220	100,0	24436	21,2	81447	70,7	9337	8,1
PRAHOVA	315470	100,0	57766	18,3	242135	76,8	15569	4,9
SALAJ	77734	100,0	17000	21,9	55697	71,7	5037	6,5
SATU MARE	146678	100,0	29585	20,2	106631	72,7	10462	7,1
SIBIU	198160	100,0	33817	17,1	155831	78,6	8512	4,3
SUCEAVA	231147	100,0	44189	19,1	169659	73,4	17299	7,5
TELEORMAN	101472	100,0	19495	19,2	77151	76,0	4826	4,8
TIMIS	327091	100,0	61421	18,8	248657	76,0	17013	5,2
TULCEA	93983	100,0	17881	19,0	70775	75,3	5327	5,7
VASLUI	104590	100,0	21939	21,0	73848	70,6	8803	8,4
VALCEA	140813	100,0	28480	20,2	103483	73,5	8850	6,3
VRANCEA	113629	100,0	21336	18,8	87543	77,0	4750	4,2
MUN. BUCURESTI	1886863	100,0	329708	17,5	1439023	76,3	118132	6,3
ILFOV	131627	100,0	29348	22,3	95623	72,6	6656	5,1

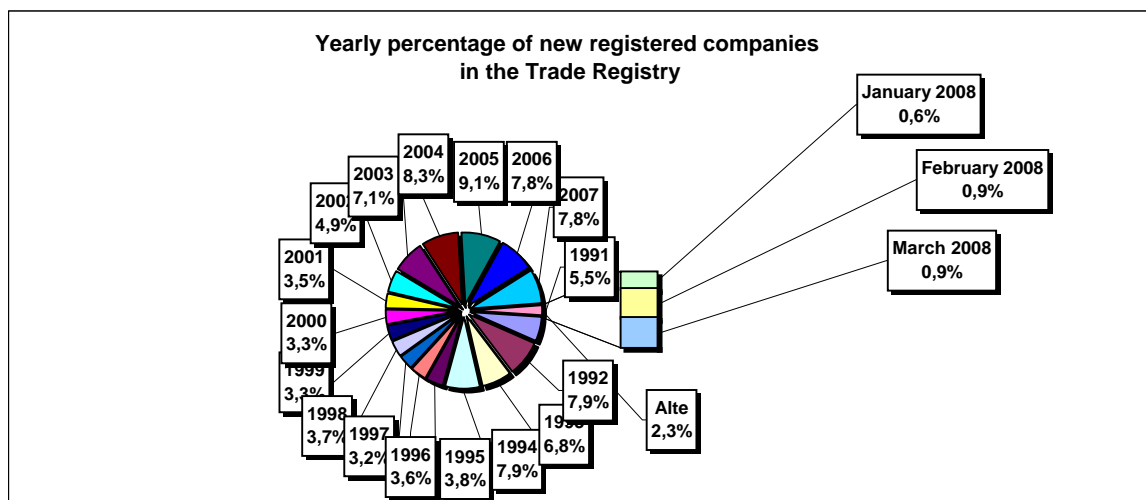
Table no.3

Number and structure of incorporations in the trade registers during December 1990-
March 2008

Period (year, month)	Registered companies		Percentage	
	No.	%	%	%
0	1	2	3	
Total, 31 March 2008, out of which	1740944	100,00		
Year 1990	81	0,00		
Year 1991	95840	5,51		
Year 1992	137456	7,90		
Year 1993	117078	6,72		
Year 1994	137445	7,89		
Year 1995	65479	3,76		
Year 1996	62089	3,57		
Year 1997	55663	3,20		
Year 1998	63878	3,67		
Year 1999	57197	3,29		
Year 2000	57291	3,29		
Year 2001	61265	3,52		
Year 2002	84780	4,87		
Year 2003	123582	7,10		
Year 2004	144284	8,29		
Year 2005	157375	9,04		
Year 2006	135211	7,77		
Year 2007	144641	8,31		
Year 2008 (I - XII) out of which :	40309			45,5
January	9831			24,4
February	15231			10,5
March	15247			10,5

Note: Column 2 reveals the annual structure of incorporations; column 3 reveals the structure by months during the current year.

Diagram no.1



**Number of incorporations in the trade registers by counties and capital sources during
December 1990 - March 2008**

Counties	Total		out of which:						Ranking by: *
			Private capital			State majority capital		Mixed capital (state+private)	
			out of which:			out of which:			
			PF+AF	Companies	OC	RA	Companies	Companies	
No.	%	No.	No.	No.	No.	No.	No.		
0	1	2	3	4	5	6	7	8	9
Total ROMÂNIA	1740944	100,0	451336	1271883	5397	1351	2375	8602	X
ALBA	27461	1,6	9515	17550	141	38	47	170	25
ARAD	42648	2,4	16125	25963	157	27	41	335	15
ARGES	44800	2,6	14342	30080	168	29	29	152	10
BACAU	43494	2,5	14383	28650	158	35	42	226	14
BIHOR	53183	3,1	12881	39748	146	38	62	308	8
BISTRITA-NASAUD	21233	1,2	7446	13532	98	19	29	109	33
BOTOSANI	21408	1,2	9952	11021	122	21	173	119	31
BRASOV	54493	3,1	11585	42489	114	47	87	171	7
BRAILA	23855	1,4	6132	17387	96	28	45	167	28
BUZAU	31819	1,8	9372	22104	142	28	42	131	21
CARAS-SEVERIN	21453	1,2	7415	13699	102	35	65	137	30
CALARASI	17387	1,0	5109	12002	86	18	77	95	38
CLUJ	80880	4,6	20768	59607	150	52	41	262	2
CONSTANTA	72730	4,2	14155	57727	203	51	51	543	3
COVASNA	14827	0,9	5163	9431	68	24	32	109	41
DAMBOVITA	32224	1,9	14445	17388	134	29	75	153	20
DOLJ	45721	2,6	9475	35783	162	40	58	203	9
GALATI	41267	2,4	8610	32298	135	30	51	143	16
GIURGIU	14206	0,8	3408	10477	80	22	109	110	42
GORJ	20675	1,2	4978	15280	184	50	83	100	34
HARGHITA	26956	1,5	11053	15522	86	23	43	229	26
HUNEDOARA	35407	2,0	9235	25677	81	40	92	282	18
IALOMITA	16175	0,9	6157	9792	74	15	46	91	40
IASI	54542	3,1	15188	38742	164	34	70	344	6
MARAMURES	44376	2,5	17650	26403	124	37	39	123	11
MEHEDINTI	19510	1,1	6306	12978	82	19	27	98	35
MURES	43715	2,5	16106	27221	156	30	34	168	13
NEAMT	38099	2,2	14094	23620	161	29	30	165	17
OLT	24436	1,4	9536	14526	161	26	64	123	27
PRAHOVA	57766	3,3	17846	39350	177	50	72	271	5
SALAJ	17000	1,0	6636	10147	107	19	28	63	39
SATU MARE	29585	1,7	9800	19502	88	19	42	134	22
SIBIU	33817	1,9	8422	24976	119	34	108	158	19
SUCEAVA	44189	2,5	20956	22717	202	30	64	220	12
TELEORMAN	19495	1,1	6745	12350	152	21	45	182	36
TIMIS	61421	3,5	10012	50814	140	38	69	348	4
TULCEA	17881	1,0	6347	11196	66	18	42	212	37
VASLUI	21939	1,3	10479	11159	109	16	41	135	29
VALCEA	28480	1,6	11125	16997	168	40	37	113	24
VRANCEA	21336	1,2	6439	14636	104	16	27	114	32
MUN. BUCURESTI	329707	18,9	22305	305927	138	115	103	1119	1
ILFOV	29348	1,7	3640	25415	92	21	13	167	23

Table no. 5

**Number of incorporations in the trade registers by counties and business categories during
December 1990 – Match 2008**

County	Total		out of which:						RA	OC
			PF+AF	companies: 1282860						
	No.	%		No.	SNC	SCS	SRL	SA	No.	No.
			No.		No.	No.	No.			
0	1	2	3	4	5	6	7	8	9	
Total ROMÂNIA	1740944	100,0	451336	32665	1581	1215818	32790	1351	5397	
ALBA	27461	1,6	9515	890	11	16303	563	38	141	
ARAD	42647	2,4	16125	53	12	25591	681	27	157	
ARGES	44800	2,6	14342	107	15	29310	829	29	168	
BACAU	43494	2,5	14383	1299	4	26880	734	35	158	
BIHOR	53183	3,1	12881	126	47	39037	908	38	146	
BISTRITA-NASAUD	21233	1,2	7446	146	21	13085	418	19	98	
BOTOSANI	21408	1,2	9952	468	1	10389	455	21	122	
BRASOV	54493	3,1	11585	239	20	41623	865	47	114	
BRAILA	23855	1,4	6132	376	12	16689	522	28	96	
BUZAU	31819	1,8	9372	3747	46	17905	579	28	142	
CARAS-SEVERIN	21453	1,2	7415	117	9	13305	470	35	102	
CALARASI	17387	1,0	5109	609	3	11206	356	18	86	
CLUJ	80880	4,6	20768	2112	18	56475	1305	52	150	
CONSTANTA	72730	4,2	14155	311	23	56498	1489	51	203	
COVASNA	14827	0,9	5163	148	4	9121	299	24	68	
DAMBOVITA	32224	1,9	14445	60	8	17056	492	29	134	
DOLJ	45721	2,6	9475	1560	8	33587	889	40	162	
GALATI	41267	2,4	8610	1574	6	30068	844	30	135	
GIURGIU	14206	0,8	3408	35	8	10329	324	22	80	
GORJ	20675	1,2	4978	29	1	14943	490	50	184	
HARGHITA	26956	1,5	11053	62	7	15235	490	23	86	
HUNEDOARA	35407	2,0	9235	1166	98	24112	675	40	81	
IALOMITA	16175	0,9	6157	266	11	9304	348	15	74	
IASI	54542	3,1	15188	507	111	37523	1013	34	164	
MARAMURES	44376	2,5	17650	1927	23	24019	595	37	124	
MEHEDINTI	19510	1,1	6306	427	3	12341	332	19	82	
MURES	43715	2,5	16106	37	34	26680	672	30	156	
NEAMT	38099	2,2	14094	3293	30	19818	674	29	161	
OLT	24436	1,4	9536	1611	1	12608	493	26	161	
PRAHOVA	57766	3,3	17846	3122	14	35649	908	50	177	
SALAJ	17000	1,0	6636	600	4	9342	292	19	107	
SATU MARE	29585	1,7	9800	283	6	18911	478	19	88	
SIBIU	33817	1,9	8422	777	49	23751	665	34	119	
SUCEAVA	44189	2,5	20956	438	8	21965	590	30	202	
TELEORMAN	19495	1,1	6745	272	399	11486	420	21	152	
TIMIS	61421	3,5	10012	612	29	49327	1263	38	140	
TULCEA	17881	1,0	6347	1363	114	9493	480	18	66	
VASLUI	21939	1,3	10479	90	12	10819	414	16	109	
VALCEA	28480	1,6	11125	364	6	16288	489	40	168	
VRANCEA	21336	1,2	6439	356	10	13961	450	16	104	
MUN. BUCURESTI	329708	18,9	22305	1037	304	298887	6921	115	138	
ILFOV	29348	1,7	3640	49	31	24899	616	21	92	

Table no. 6

Operations performed in the trade registers by counties and categories of registration in the month of March 2008

County	Total of operations carried on		out of which:					
			New incorporations		Changes in statutory documents		Strike off companies	
	No.	%	No.	%	No.	%	No.	%
0	1	2	3	4	5	6	9	10
Total ROMÂNIA	132183	100,0	15247	11,5	113082	85,5	3854	2,9
ALBA	1914	100,0	288	15,0	1543	80,6	83	4,3
ARAD	1596	100,0	342	21,4	1190	74,6	64	4,0
ARGES	3392	100,0	383	11,3	2873	84,7	136	4,0
BACAU	2716	100,0	400	14,7	2246	82,7	70	2,6
BIHOR	3889	100,0	546	14,0	3231	83,1	112	2,9
BISTRITA-NASAUD	1865	100,0	179	9,6	1641	88,0	45	2,4
BOTOSANI	1377	100,0	219	15,9	1099	79,8	59	4,3
BRASOV	9577	100,0	499	5,2	8990	93,9	88	0,9
BRAILA	1037	100,0	204	19,7	751	72,4	82	7,9
BUZAU	2188	100,0	250	11,4	1793	81,9	145	6,6
CARAS-SEVERIN	1067	100,0	146	13,7	905	84,8	16	1,5
CALARASI	2866	100,0	192	6,7	2661	92,8	13	0,5
CLUJ	5718	100,0	794	13,9	4783	83,6	141	2,5
CONSTANTA	4142	100,0	617	14,9	3448	83,2	77	1,9
COVASNA	869	100,0	115	13,2	731	84,1	23	2,6
DAMBOVITA	1706	100,0	233	13,7	1419	83,2	54	3,2
DOLJ	2647	100,0	388	14,7	2087	78,8	172	6,5
GALATI	3301	100,0	376	11,4	2869	86,9	56	1,7
GIURGIU	3840	100,0	129	3,4	3703	96,4	8	0,2
GORJ	816	100,0	185	22,7	588	72,1	43	5,3
HARGHITA	1511	100,0	324	21,4	1140	75,4	47	3,1
HUNEDOARA	2325	100,0	254	10,9	1865	80,2	206	8,9
IALOMITA	1432	100,0	128	8,9	1264	88,3	40	2,8
IASI	4674	100,0	600	12,8	3898	83,4	176	3,8
MARAMURES	3183	100,0	331	10,4	2749	86,4	103	3,2
MEHEDINTI	647	100,0	161	24,9	448	69,2	38	5,9
MURES	1907	100,0	367	19,2	1391	72,9	149	7,8
NEAMT	2574	100,0	313	12,2	2205	85,7	56	2,2
OLT	1049	100,0	203	19,4	776	74,0	70	6,7
PRAHOVA	5136	100,0	553	10,8	4411	85,9	172	3,3
SALAJ	1073	100,0	174	16,2	837	78,0	62	5,8
SATU MARE	2601	100,0	336	12,9	2226	85,6	39	1,5
SIBIU	4096	100,0	316	7,7	3652	89,2	128	3,1
SUCEAVA	2333	100,0	322	13,8	1917	82,2	94	4,0
TELEORMAN	1814	100,0	152	8,4	1624	89,5	38	2,1
TIMIS	3651	100,0	624	17,1	2913	79,8	114	3,1
TULCEA	851	100,0	126	14,8	686	80,6	39	4,6
VASLUI	828	100,0	168	20,3	445	53,7	215	26,0
VALCEA	2048	100,0	216	10,5	1737	84,8	95	4,6
VRANCEA	1636	100,0	149	9,1	1426	87,2	61	3,7
MUN. BUCURESTI	26811	100,0	2470	9,2	23967	89,4	374	1,4
ILFOV	3480	100,0	475	13,6	2954	84,9	51	1,5

Table no.7

Number of incorporations in the trade registers by counties and capital sources in the month of March 2008

County	Total		out of which:					Rnking by: *	
			Private capital			State majority capital			Mixed capital (state+priva)
			out of which:			out of which:			
			PF+AF	Companies	OC	RA	Companie s		Companie s
No.	%	No.	No.	No.	No.	No.	No.		
0	1	2	3	4	5	6	7	8	9
Total ROMÂNIA	15247	100,0	4921	10321		1	1	3	X
ALBA	288	1,9	115	173					22
ARAD	342	2,2	136	206					15
ARGES	383	2,5	155	228					12
BACAU	400	2,6	163	237					10
BIHOR	546	3,6	241	305					7
BISTRITA-NASAUD	179	1,2	51	128					32
BOTOSANI	219	1,4	134	85					26
BRASOV	499	3,3	145	352		1		1	8
BRAILA	204	1,3	96	107				1	28
BUZAU	250	1,6	87	163					24
CARAS-SEVERIN	146	1,0	52	94					38
CALARASI	192	1,3	66	126					30
CLUJ	794	5,2	286	507			1		2
CONSTANTA	617	4,0	185	432					4
COVASNA	115	0,8	60	55					42
DAMBOVITA	233	1,5	63	170					25
DOLJ	388	2,5	135	253					11
GALATI	376	2,5	153	223					13
GIURGIU	129	0,8	26	103					39
GORJ	185	1,2	46	139					31
HARGHITA	324	2,1	187	137					18
HUNEDOARA	254	1,7	59	195					23
IALOMITA	128	0,8	43	85					40
IASI	600	3,9	219	381					5
MARAMURES	331	2,2	126	205					17
MEHEDINTI	161	1,1	54	107					35
MURES	367	2,4	153	214					14
NEAMT	313	2,1	128	185					21
OLT	203	1,3	65	138					29
PRAHOVA	553	3,6	187	366					6
SALAJ	174	1,1	82	92					33
SATU MARE	336	2,2	154	182					16
SIBIU	316	2,1	105	211					20
SUCEAVA	322	2,1	117	205					19
TELEORMAN	152	1,0	59	93					36
TIMIS	624	4,1	116	508					3
TULCEA	126	0,8	59	67					41
VASLUI	168	1,1	79	89					34
VALCEA	216	1,4	81	135					27
VRANCEA	149	1,0	48	101					37
MUN. BUCURESTI	2470	16,2	354	2115				1	1
ILFOV	475	3,1	51	424					9

*) The total number of incorporations (col 1)

*** Less than 0,01%

Table no.8

**Number of incorporations in the trade registers by counties and business categories
in the month of March 2008**

County	Total		out of which:						
			PF+AF	companies: 10325				RA	OC
	SNC	SCS		SRL	SA				
	No.	%	No.	No.	No.	No.	No.	No.	
0	1	2	3	4	5	6	7	8	9
Total ROMÂNIA	15247	100,0	4921		2	10239	84	1	
ALBA	288	1,9	115			169	4		
ARAD	342	2,2	136			205	1		
ARGES	383	2,5	155			227	1		
BACAU	400	2,6	163			235	2		
BIHOR	546	3,6	241			303	2		
BISTRITA-NASAUD	179	1,2	51			127	1		
BOTOSANI	219	1,4	134			84	1		
BRASOV	499	3,3	145			348	5	1	
BRAILA	204	1,3	96			105	3		
BUZAU	250	1,6	87			162	1		
CARAS-SEVERIN	146	1,0	52			93	1		
CALARASI	192	1,3	66			125	1		
CLUJ	794	5,2	286			504	4		
CONSTANTA	617	4,0	185			428	4		
COVASNA	115	0,8	60			54	1		
DAMBOVITA	233	1,5	63			170			
DOLJ	388	2,5	135			252	1		
GALATI	376	2,5	153			223			
GIURGIU	129	0,8	26			103			
GORJ	185	1,2	46			138	1		
HARGHITA	324	2,1	187			136	1		
HUNEDOARA	254	1,7	59			195			
IALOMITA	128	0,8	43			85			
IASI	600	3,9	219			379	2		
MARAMURES	331	2,2	126			202	3		
MEHEDINTI	161	1,1	54			105	2		
MURES	367	2,4	153			212	2		
NEAMT	313	2,1	128			184	1		
OLT	203	1,3	65			135	3		
PRAHOVA	553	3,6	187			363	3		
SALAJ	174	1,1	82			92			
SATU MARE	336	2,2	154			182			
SIBIU	316	2,1	105		1	209	1		
SUCEAVA	322	2,1	117			203	2		
TELEORMAN	152	1,0	59			92	1		
TIMIS	624	4,1	116			507	1		
TULCEA	126	0,8	59			66	1		
VASLUI	168	1,1	79			88	1		
VALCEA	216	1,4	81			133	2		
VRANCEA	149	1,0	48			100	1		
MUN. BUCURESTI	2470	16,2	354		1	2094	21		
ILFOV	475	3,1	51			422	2		

Table no. 9

**Number of incorporations in the trade registers by domains of activity and business categories in the month of
Match 2008**

CAEN segment	Field of activity	Total		out of which:						
				PF+AF	companies: 10325				RA	OC
					SNC	SCS	SRL	SA		
					No.	No.	No.	No.		
0	1	2	3	4	5	6	7	8	9	10
	Total ROMANIA	9831	100,0	2155		1	7635	39	1	
1	Agriculture, hunting and related service activities	170	1,7	66			104			
2	Forestry and logging	66	0,7	7			58		1	
3	Fishing and aquaculture	102	1,0	95			7			
5	Mining of hard and brown coal	6	0,1	6						
6	Extraction of crude petroleum and natural gas	1	0,0				1			
7	Mining of metal ores									
8	Other mining and quarrying	20	0,2				20			
9	Mining support service activities	7	0,1	3			4			
10	Manufacture of food products	49	0,5	12			37			
11	Manufacture of beverages	4	0,0	1			3			
12	Manufacture of tobacco products									
13	Manufacture of textiles	18	0,2	5			13			
14	Manufacture of wearing apparel	62	0,6	14			48			
15	Tanning and dressing of leather; manufacture of luggage, handbags, saddlery, harness and footwear; dressing and dyeing of fur	21	0,2	5			15		1	
16	Manufacture of wood and of products of wood and cork, except furniture; manufacture of articles of straw and plaiting materials	49	0,5	17			32			
17	Manufacture of paper and paper products	9	0,1	1			8			
18	Printing and reproduction of recorded media	26	0,3	4			22			
19	Manufacture of coke and refined petroleum products									
20	Manufacture of chemicals and chemical products	12	0,1	5			7			
21	Manufacture of basic pharmaceutical products and pharmaceutical preparations	1	0,0				1			
22	Manufacture of rubber and plastic products	41	0,4	1			40			
23	Manufacture of other non-metallic mineral products	40	0,4	9			31			
24	Manufacture of basic metals	6	0,1				5		1	
25	Manufacture of fabricated metal products, except machinery and equipment	88	0,9	19			69			
26	Manufacture of computer, electronic and optical products	10	0,1	3			7			
27	Manufacture of electrical equipment	7	0,1				7			
28	Manufacture of machinery and equipment n.e.c.	15	0,2	7			7		1	
29	Manufacture of motor vehicles, trailers and semi-trailers	7	0,1				7			
30	Manufacture of other transport equipment	7	0,1				7			
31	Manufacture of furniture	43	0,4	7			36			
32	Other manufacturing	19	0,2	9			10			
33	Repair and installation of machinery and equipment	38	0,4	6			32			
35	Electricity, gas, steam and air conditioning supply	16	0,2				16			
36	Water collection, treatment and supply	18	0,2	5			8		5	
37	Sewerage	10	0,10				10			
38	Waste collection, treatment and disposal activities; materials recovery	29	0,29	1			28			
39	Remediation activities and other waste management services	1	0,01				1			
41	Construction of buildings	1073	10,91	25			1047		1	
42	Civil engineering	68	0,69	5			61		2	
43	Specialised construction activities	676	6,88	131			545			
45	Wholesale and retail trade and repair of motor vehicles and motorcycles	329	3,35	47			282			
46	Wholesale trade, except of motor vehicles and motorcycles	833	8,47	82			751			
47	Retail trade, except of motor vehicles and motorcycles	1494	15,20	385			1109			
49	Land transport and transport via pipelines	799	8,13	218			581			
50	Water transport	16	0,16	3			13			

Table no. 9
(continuance)

Number of incorporations in the trade registers by domains of activity and business categories in the month of March 2008

CAEN segment	Field of activity	Total		out of which:						
				PF+AF	companies: 10325				RA	OC
		SNC	SCS		SRL	SA	No.	No.		
		No.	%	No.	No.	No.			No.	No.
0	1	2	3	4	5	6	7	8	9	10
	Total ROMÂNIA	9831	100,0	2155		1	7635	39	1	
51	Air transport	89	0,9	24			64	1		
52	Warehousing and support activities for transportation	134	1,4	60			74			
53	Postal and courier activities	28	0,3	20			8			
55	Accommodation	108	1,1	19			87	2		
56	Food and beverage service activities	246	2,5	15			231			
58	Publishing activities	30	0,3	6			24			
59	Motion picture, video and television programme production, sound recording and music publishing activities	29	0,3	8			21			
60	Programming and broadcasting activities	110	1,1	84			24	2		
61	Telecommunications	39	0,4				38	1		
62	Computer programming, consultancy and related activities	173	1,8	78			94	1		
63	Information service activities	48	0,5	14			34			
64	Financial service activities, except insurance and pension funding	27	0,3	4			16	7		
65	Insurance, reinsurance and pension funding, except compulsory social security	5	0,1	1			2	2		
66	Activities auxiliary to financial services and insurance activities	85	0,9	3			82			
68	Real estate activities	364	3,7	11			345	8		
69	Legal and accounting activities	98	1,0	6			92			
70	Activities of head offices; management consultancy Architectural and engineering activities; technical testing and analysis	325	3,3	46		1	276	2		
71	Scientific research and development	220	2,2	48			172			
72	Advertising and market research	44	0,4	24			20			
73	Other professional, scientific and technical activities	107	1,1	6			100	1		
74	Veterinary activities	302	3,1	139			162	1		
75	Rental and leasing activities	17	0,2	2			15			
77	Employment activities	44	0,4	1			43			
78	Travel agency, tour operator and other reservation service and related activities	43	0,4				43			
79	Security and investigation activities	36	0,4	2			34			
80	Services to buildings and landscape activities	29	0,3	10			19			
81	Office administrative, office support and other business support activities	78	0,8	10			68			
82	Public administration and defence; compulsory social security	174	1,8	117			57			
84	Education									
85	Human health activities	108	1,1	66			42			
86	Residential care activities	62	0,6	2			60			
87	Social work activities without accommodation	2	0,0				2			
88	Creative, arts and entertainment activities	3	0,0	1			2			
90	Libraries, archives, museums and other cultural activities	48	0,5	24			24			
91	Gambling and betting activities	2	0,0				2			
92	Sports activities and amusement and recreation activities	25	0,3	6			19			
93	Activities of membership organisations	57	0,6	18			39			
94	Repair of computers and personal and household goods	1	0,0	1						
95	Other personal service activities	38	0,4	18			20			
96	Activities of households as employers of domestic personnel	138	1,4	48			90			
97	Undifferentiated goods- and services-producing activities of private households for own use	9	0,1	9						
98	Activities of extraterritorial organisations and bodies									
99										

^{*)}Field of activity declared when registered, according to CAEN classification

Table no. 10

Number of incorporated trading companies and the value of the subscribed share capital, by counties, in the month of March 2008

County	Total registered companies		Subscribed capital		Average subscribed capital on company
	No.	%	thousand Lei	%	thousand Lei
0	1	2	3	4	5
Total ROMÂNIA	10325	100,0	433195,1	100,0	42,2
ALBA	173	1,7	4163,5	1,0	24,5
ARAD	206	2,0	3113,5	0,7	15,2
ARGES	228	2,2	604,9	0,1	2,7
BACAU	237	2,3	85535,4	19,7	362,4
BIHOR	305	3,0	1386,3	0,3	4,6
BISTRITA-NASAUD	128	1,2	67,7	0,0	0,5
BOTOSANI	85	0,8	35,9	***	0,4
BRASOV	353	3,4	6790,8	1,6	19,5
BRAILA	108	1,0	38,9	***	0,4
BUZAU	163	1,6	4097,0	0,9	25,1
CARAS-SEVERIN	94	0,9	56,1	0,0	0,6
CALARASI	126	1,2	359,7	0,1	2,9
CLUJ	508	4,9	1857,7	0,4	3,7
CONSTANTA	432	4,2	907,9	0,2	2,1
COVASNA	55	0,5	20,9	***	0,4
DAMBOVITA	170	1,6	119,0	0,0	0,7
DOLJ	253	2,5	529,0	0,1	2,1
GALATI	223	2,2	74,2	0,0	0,3
GIURGIU	103	1,0	107,3	0,0	1,0
GORJ	139	1,3	139,6	0,0	1,0
HARGHITA	137	1,3	24231,0	5,6	176,9
HUNEDOARA	195	1,9	97,3	0,0	0,5
IALOMITA	85	0,8	45,2	0,0	0,5
IASI	381	3,7	1042,1	0,2	2,7
MARAMURES	205	2,0	699,6	0,2	3,4
MEHEDINTI	107	1,0	68,6	0,0	0,7
MURES	214	2,1	130,1	0,0	0,6
NEAMT	185	1,8	130,9	0,0	0,7
OLT	138	1,3	100,1	0,0	0,7
PRAHOVA	366	3,5	613,5	0,1	1,7
SALAJ	92	0,9	43,9	0,0	0,5
SATU MARE	182	1,8	119,2	0,0	0,7
SIBIU	211	2,0	186,9	0,0	0,9
SUCEAVA	205	2,0	5906,8	1,4	29,1
TELEORMAN	93	0,9	62,2	0,0	0,7
TIMIS	508	4,9	5215,9	1,2	10,3
TULCEA	67	0,6	24,6	***	0,4
VASLUI	89	0,9	28,3	***	0,3
VALCEA	135	1,3	154,0	0,0	1,2
VRANCEA	101	1,0	597,8	0,1	5,9
MUN. BUCURESTI	2116	20,5	228041,1	52,6	108,2
ILFOV	424	4,1	55650,7	12,8	131,9

Table no. 11

Number of incorporated trading companies and the value of the subscribed share capital by legal forms, in the month of March 2008

Company type	Total registered companies		Subscribed capital		Average subscribed capital on company
	No.	%	thousand Lei	%	thousand Lei
0	1	2	3	4	5
Total ROMÂNIA	10325	100,0	433195,1	100,0	42,2
SNC					
SCS	2	0,0	0,2	***	0,2
SA	84	0,8	246249,0	56,8	8794,6
SRL	10239	99,2	186946,0	43,2	18,3
SCA					

Note: The average does not include filials because according to the Law no.31/1990 they are not juridical persons

*** Less than 0,01%

Diagram no.5

