



MINISTRY OF JUSTICE

THE NATIONAL TRADE REGISTER OFFICE

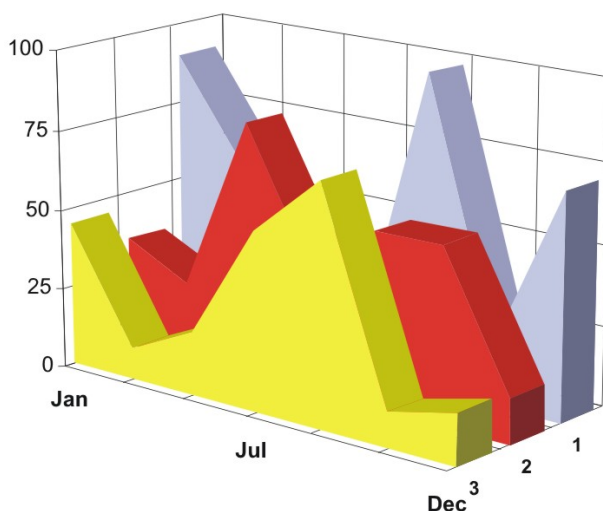
București, Bd. Unirii nr. 74, Bl. J3b, tronson II+III, sector 3; Telefon: +40 21 316.08.04, 316.08.10; Fax: +40 21 316.08.03; Cod poștal: 030837  
Website: [www.onrc.ro](http://www.onrc.ro); E-mail: [onrc@onrc.ro](mailto:onrc@onrc.ro); Cod identificare Fiscală: 14942091

# PROCEEDINGS IN THE CENTRAL TRADE REGISTER

## STATISTICAL SYNTHESIS

OF

**RECORDS IN THE CENTRAL TRADE REGISTER  
- the 29<sup>th</sup> of February 2008 - provisional data -**



- ISSUE No. 195 -

**MINISTRY OF JUSTICE  
THE NATIONAL TRADE REGISTER OFFICE**

---

- Operations such as incorporation of trading companies, submission of changes, and strike-off are carried out based on Law No.26/1990, as republished, Law No.31/1990, as republished and on the Methodological Norms no. P/608/1998.
  
- This work reflects the evolution of the operations with the Trade Register Office attached to Bucharest Law Court and the Trade Register Offices attached to County Law Courts.
  
- The data contained in the Central Trade Register refer to operations for which law sets out the obligation of being registered in the trade registers kept by the 42 trade register offices attached to law courts.

*• The content of this publication shall not be reproduced, partly or entirely, in original or modified form, and shall not be stored in a recovery system and shall not be transmitted in any form or by any means without prior written authorization of the Ministry of Justice – The National Trade Register Office.*

*• The content of this publication may be used in articles, studies, books, as supporting or explanatory data only by clearly and accurately indicating the source.*

# CONTENTS

Page

<b>1</b>	<b>Definitions</b>	<b>1</b>
<b>2.1</b>	<b>Data related to December 1990 –February 2008</b>	<b>3</b>
<hr/>		
	<b>Table no.1 – Operations performed in the trade registers by categories of registration during December 1990 –February 2008, total by country and by counties, share of counties in the total by country</b>	<b>3</b>
	<b>Table no.2 – Operations performed in the trade registers during December 1990 – February 2008, total by country and counties, share of categories of operations in the total of each county</b>	<b>4</b>
	<b>Table no. 3 – Number and structure of incorporations in the trade registers during December 1990-February 2008</b>	<b>5</b>
	<b>Diagram no. 1 - Yearly percentage of new registered companies in the Trade Registry</b>	
	<b>Table no. 4 – Number of incorporations in the trade registers by counties and capital sources during December 1990 - February 2008</b>	<b>6</b>
	<b>Table no. 5 – Number of incorporations in the trade registers by counties and business categories during December 1990 –February 2008</b>	<b>7</b>
<hr/>		
<b>2.2</b>	<b>Data related to February 2008</b>	<b>8</b>
<hr/>		
	<b>Table no. 6 – Operations performed in the trade registers by counties and categories of registration in the month of February 2008</b>	<b>8</b>
	<b>Table no. 7 – Number of incorporations in the trade registers by counties and capital sources in the month of February 2008</b>	<b>9</b>
	<b>Table no. 8 – Number of incorporations in the trade registers by counties and business categories in the month of February 2008</b>	<b>10</b>
	<b>Table no. 9 –Number of incorporations in the trade registers by domains of activity and business categories in the month of February 2008</b>	<b>11-12</b>
	<b>Table no. 10 – Number of incorporated trading companies and the value of the subscribed share capital, by counties, in the month of February 2008</b>	<b>13</b>
	<b>Table no. 11– Number of incorporated trading companies and the value of the subscribed share capital by legal forms, in the month of February 2008</b>	<b>14</b>
	<b>Chart no. 5 – Average value of the subscribed share capital by types of trading companies in the month of February 2008</b>	<b>14</b>

## Definitions

The Trade Register Office was established based on Law No. 26/1990, as republished and subsequently amended and supplemented, operates as an active institution as of December 1990 and is twofold structured:

- at national level, represented by the National Trade Register Office organized under the authority of the Ministry of Justice
- at local level, represented by the 42 Trade Register Offices attached to Law Courts, organized under the subordination of the National Trade Register Office

The business categories subject to registration in the trade register are:

- natural persons and family associations usually carrying on trading activities, trading companies, national companies, autonomous administrations, and co-operative organizations
  - branches registered as trading companies with legal personality, having the setting-up, operation and incorporation legal regime of the type of legal form.
- **Terms used in tables and charts**
- **Number of companies:** depending on the table, the number of companies incorporated during the reference period, the number of companies struck-off from the trade register.
  - **Value of subscribed share capital:**
    - **total, in national currency:** the share capital value resulted by adding up the subscribed values (in cash and in kind) in national currency (lei)
  - **Regions of economic development:**

<i>North-East:</i>	Suceava, Botoșani, Neamț, Iași, Bacău, Vaslui.
<i>South-East:</i>	Vrancea, Galați, Buzău, Brăila, Tulcea, Constanța.
<i>South-Muntenia:</i>	Argeș, Dâmbovița, Prahova, Teleorman, Giurgiu, Călărași, Ialomița.
<i>South-West Oltenia:</i>	Gorj, Vâlcea, Dolj, Mehedinți, Olt.
<i>West:</i>	Arad, Caraș-Severin, Hunedoara, Timiș.
<i>North-West:</i>	Bihor, Bistrița, Cluj, Satu Mare, Sălaj, Maramureș.
<i>Center:</i>	Alba, Brașov, Covasna, Harghita, Mureș, Sibiu.
<i>Bucharest-Ilfov:</i>	București, Ilfov.

NACE Code – The Classification of Economic Activities in the European Community was approved by GO No. 656/1997, amended by Order No 601/2002 and by Order no. 337/2007 of the President of the National Institute of Statistics, and complies with the international classification used in statistic reports and official documents. Activities are ranked by the harmonization principle by sections, divisions, groups and classes.

## Abbreviations

- **PF** - Authorized Natural Person
- **AF** - Family Association
- **SNC** - General Partnership
- **SCS** - Limited Partnership
- **SA** - Joint-Stock Company
- **SRL** - Limited Liability Company
- **RA** - Autonomous Administration
- **OC** - Co-operative Organization

## Sources of Information:

The integrated IT system of the trade register is designed by The National Trade Register Office in compliance with the provisions of the related legislation in force. The source of information consists of the trade registers organized in a computerized system, kept by the trade register offices attached to law courts.

Table no. 1

**Operations performed in the trade registers by categories of registration during  
December 1990 – February 2008, total by country and by counties, share of counties  
in the total by country**

Counties	Total of registered operations		out of which :					
			Registered companies		Changes in statutory documents		Strike off companies	
	No.	%	No.	%	No.	%	No.	%
0	1	2	3	4	5	6	11	12
<b>Total ROMÂNIA</b>	<b>9119816</b>	<b>100,0</b>	<b>1725697</b>	<b>100,0</b>	<b>6869429</b>	<b>100,0</b>	<b>524690</b>	<b>100,0</b>
ALBA	120283	1,3	27173	1,6	87936	1,3	5174	1,0
ARAD	206520	2,3	42305	2,5	153532	2,2	10683	2,0
ARGES	220214	2,4	44417	2,6	166002	2,4	9795	1,9
BACAU	209630	2,3	43094	2,5	154464	2,2	12072	2,3
BIHOR	265028	2,9	52637	3,1	197330	2,9	15061	2,9
BISTRITA-NASAUD	110093	1,2	21054	1,2	82543	1,2	6496	1,2
BOTOSANI	83734	0,9	21189	1,2	56682	0,8	5863	1,1
BRASOV	303689	3,3	53994	3,1	237693	3,5	12002	2,3
BRAILA	120473	1,3	23651	1,4	92883	1,4	3939	0,8
BUZAU	165012	1,8	31569	1,8	122631	1,8	10812	2,1
CARAS-SEVERIN	113751	1,2	21307	1,2	84068	1,2	8376	1,6
CALARASI	75835	0,8	17195	1,0	53744	0,8	4896	0,9
CLUJ	405745	4,4	80086	4,6	311719	4,5	13940	2,7
CONSTANTA	399490	4,4	72113	4,2	301145	4,4	26232	5,0
COVASNA	81076	0,9	14712	0,9	61802	0,9	4562	0,9
DAMBOVITA	136038	1,5	31991	1,9	90417	1,3	13630	2,6
DOLJ	250090	2,7	45333	2,6	192010	2,8	12747	2,4
GALATI	246845	2,7	40891	2,4	191803	2,8	14151	2,7
GIURGIU	66652	0,7	14077	0,8	47446	0,7	5129	1,0
GORJ	131182	1,4	20490	1,2	104205	1,5	6487	1,2
HARGHITA	132998	1,5	26632	1,5	101539	1,5	4827	0,9
HUNEDOARA	178439	2,0	35153	2,0	130731	1,9	12555	2,4
IALOMITA	85153	0,9	16047	0,9	63122	0,9	5984	1,1
IASI	306257	3,4	53942	3,1	240026	3,5	12289	2,3
MARAMURES	187950	2,1	44045	2,6	132860	1,9	11045	2,1
MEHEDINTI	94398	1,0	19349	1,1	67022	1,0	8027	1,5
MURES	254424	2,8	43348	2,5	196697	2,9	14379	2,7
NEAMT	192176	2,1	37786	2,2	139874	2,0	14516	2,8
OLT	114947	1,3	24233	1,4	81447	1,2	9267	1,8
PRAHOVA	314745	3,5	57213	3,3	242135	3,5	15397	2,9
SALAJ	77498	0,8	16826	1,0	55697	0,8	4975	0,9
SATU MARE	146303	1,6	29249	1,7	106631	1,6	10423	2,0
SIBIU	197716	2,2	33501	1,9	155831	2,3	8384	1,6
SUCEAVA	230731	2,5	43867	2,5	169659	2,5	17205	3,3
TELEORMAN	101282	1,1	19343	1,1	77151	1,1	4788	0,9
TIMIS	326353	3,6	60797	3,5	248657	3,6	16899	3,2
TULCEA	93818	1,0	17755	1,0	70775	1,0	5288	1,0
VASLUI	104207	1,1	21771	1,3	73848	1,1	8588	1,6
VALCEA	140502	1,5	28264	1,6	103483	1,5	8755	1,7
VRANCEA	113419	1,2	21187	1,2	87543	1,3	4689	0,9
MUN. BUCURESTI	1884019	20,7	327238	19,0	1439023	20,9	117758	22,4
ILFOV	131101	1,4	28873	1,7	95623	1,4	6605	1,3

Table no. 2

**Operations performed in the trade registers during December 1990 – February 2008, total by country and counties, share of categories of operations in the total of each county**

Counties	Total of registered operations		out of which :					
			Registered companies		Changes in statutory documents		Strike off companies	
	No.	%	No.	%	No.	%	No.	%
0	1	2	3	4	5	6	11	12
<b>Total ROMÂNIA</b>	<b>9119816</b>	<b>100,0</b>	<b>1725697</b>	<b>18,9</b>	<b>6869429</b>	<b>75,3</b>	<b>524690</b>	<b>5,8</b>
ALBA	120283	100,0	27173	22,6	87936	73,1	5174	4,3
ARAD	206520	100,0	42305	20,5	153532	74,3	10683	5,2
ARGES	220214	100,0	44417	20,2	166002	75,4	9795	4,4
BACAU	209630	100,0	43094	20,6	154464	73,7	12072	5,8
BIHOR	265028	100,0	52637	19,9	197330	74,5	15061	5,7
BISTRITA-NASAUD	110093	100,0	21054	19,1	82543	75,0	6496	5,9
BOTOSANI	83734	100,0	21189	25,3	56682	67,7	5863	7,0
BRASOV	303689	100,0	53994	17,8	237693	78,3	12002	4,0
BRAILA	120473	100,0	23651	19,6	92883	77,1	3939	3,3
BUZAU	165012	100,0	31569	19,1	122631	74,3	10812	6,6
CARAS-SEVERIN	113751	100,0	21307	18,7	84068	73,9	8376	7,4
CALARASI	75835	100,0	17195	22,7	53744	70,9	4896	6,5
CLUJ	405745	100,0	80086	19,7	311719	76,8	13940	3,4
CONSTANTA	399490	100,0	72113	18,1	301145	75,4	26232	6,6
COVASNA	81076	100,0	14712	18,1	61802	76,2	4562	5,6
DAMBOVITA	136038	100,0	31991	23,5	90417	66,5	13630	10,0
DOLJ	250090	100,0	45333	18,1	192010	76,8	12747	5,1
GALATI	246845	100,0	40891	16,6	191803	77,7	14151	5,7
GIURGIU	66652	100,0	14077	21,1	47446	71,2	5129	7,7
GORJ	131182	100,0	20490	15,6	104205	79,4	6487	4,9
HARGHITA	132998	100,0	26632	20,0	101539	76,3	4827	3,6
HUNEDOARA	178439	100,0	35153	19,7	130731	73,3	12555	7,0
IALOMITA	85153	100,0	16047	18,8	63122	74,1	5984	7,0
IASI	306257	100,0	53942	17,6	240026	78,4	12289	4,0
MARAMURES	187950	100,0	44045	23,4	132860	70,7	11045	5,9
MEHEDINTI	94398	100,0	19349	20,5	67022	71,0	8027	8,5
MURES	254424	100,0	43348	17,0	196697	77,3	14379	5,7
NEAMT	192176	100,0	37786	19,7	139874	72,8	14516	7,6
OLT	114947	100,0	24233	21,1	81447	70,9	9267	8,1
PRAHOVA	314745	100,0	57213	18,2	242135	76,9	15397	4,9
SALAJ	77498	100,0	16826	21,7	55697	71,9	4975	6,4
SATU MARE	146303	100,0	29249	20,0	106631	72,9	10423	7,1
SIBIU	197716	100,0	33501	16,9	155831	78,8	8384	4,2
SUCEAVA	230731	100,0	43867	19,0	169659	73,5	17205	7,5
TELEORMAN	101282	100,0	19343	19,1	77151	76,2	4788	4,7
TIMIS	326353	100,0	60797	18,6	248657	76,2	16899	5,2
TULCEA	93818	100,0	17755	18,9	70775	75,4	5288	5,6
VASLUI	104207	100,0	21771	20,9	73848	70,9	8588	8,2
VALCEA	140502	100,0	28264	20,1	103483	73,7	8755	6,2
VRANCEA	113419	100,0	21187	18,7	87543	77,2	4689	4,1
MUN. BUCURESTI	1884019	100,0	327238	17,4	1439023	76,4	117758	6,3
ILFOV	131101	100,0	28873	22,0	95623	72,9	6605	5,0

Table no.3

Number and structure of incorporations in the trade registers during December 1990-  
December 2007

Period (year, month)	Registered companies		Percentage	
	No.	%	%	
0	1	2	3	
<b>Total, 30 September 2007, out of which</b>	<b>1725697</b>	<b>100,00</b>		
Year 1990	81	0,00		
Year 1991	95840	5,55		
Year 1992	137456	7,97		
Year 1993	117078	6,78		
Year 1994	137445	7,96		
Year 1995	65479	3,79		
Year 1996	62089	3,60		
Year 1997	55663	3,23		
Year 1998	63878	3,70		
Year 1999	57197	3,31		
Year 2000	57291	3,32		
Year 2001	61265	3,55		
Year 2002	84780	4,91		
Year 2003	123582	7,16		
Year 2004	144284	8,36		
Year 2005	157375	9,12		
Year 2006	135211	7,84		
Year 2007	135211	8,38		
<b>Year 2008 (I - XII) out of which :</b>	<b>25062</b>		<b>49,8</b>	
January	9831		39,2	
February	15231		10,5	

Note: Column 2 reveals the annual structure of incorporations; column 3 reveals the structure by months during the current year.

Diagram no.1

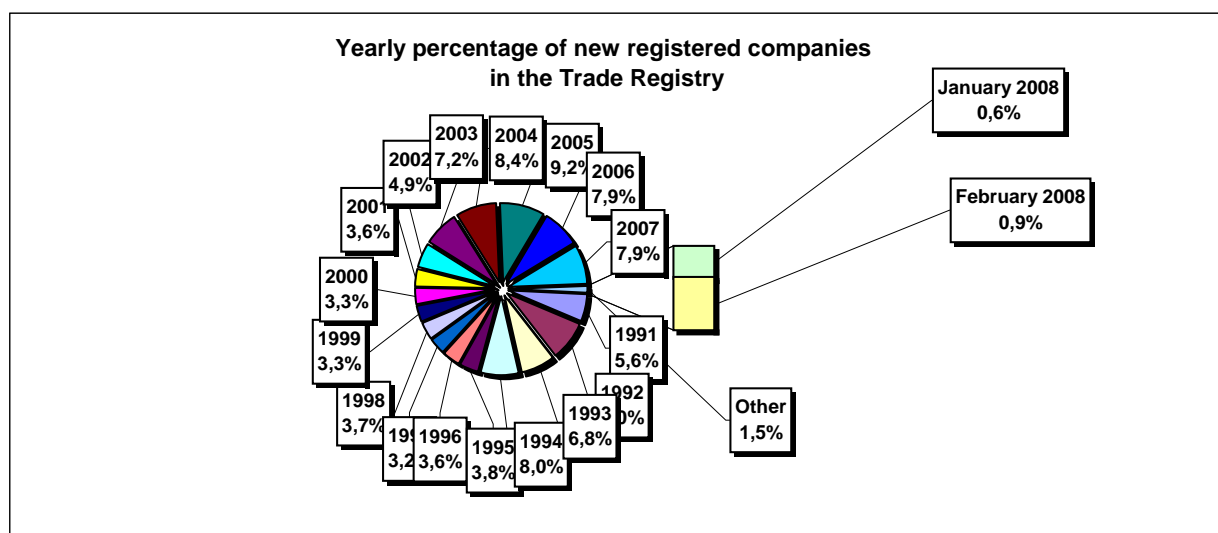


Table no. 4

**Number of incorporations in the trade registers by counties and capital sources during  
December 1990 - February 2008**

Counties	Total		out of which:					Ranking by: *	
			Private capital			State majority capital			Mixed capital (state+private)
			out of which:			out of which:			
			PF+AF	Companies	OC	RA	Companies		Companies
No.	%	No.	No.	No.	No.	No.	No.		
0	1	2	3	4	5	6	7	8	9
<b>Total ROMÂNIA</b>	<b>1725697</b>	<b>100,0</b>	<b>446415</b>	<b>1261562</b>	<b>5397</b>	<b>1350</b>	<b>2374</b>	<b>8599</b>	<b>X</b>
ALBA	27173	1,6	9400	17377	141	38	47	170	25
ARAD	42306	2,5	15989	25757	157	27	41	335	15
ARGES	44417	2,6	14187	29852	168	29	29	152	10
BACAU	43094	2,5	14220	28413	158	35	42	226	14
BIHOR	52637	3,1	12640	39443	146	38	62	308	8
BISTRITA-NASAUD	21054	1,2	7395	13404	98	19	29	109	33
BOTOSANI	21189	1,2	9818	10936	122	21	173	119	31
BRASOV	53994	3,1	11440	42137	114	46	87	170	6
BRAILA	23651	1,4	6036	17280	96	28	45	166	28
BUZAU	31569	1,8	9285	21941	142	28	42	131	21
CARAS-SEVERIN	21307	1,2	7363	13605	102	35	65	137	30
CALARASI	17195	1,0	5043	11876	86	18	77	95	38
CLUJ	80086	4,6	20482	59100	150	52	40	262	2
CONSTANTA	72113	4,2	13970	57295	203	51	51	543	3
COVASNA	14712	0,9	5103	9376	68	24	32	109	41
DAMBOVITA	31991	1,9	14382	17218	134	29	75	153	20
DOLJ	45333	2,6	9340	35530	162	40	58	203	9
GALATI	40891	2,4	8457	32075	135	30	51	143	16
GIURGIU	14077	0,8	3382	10374	80	22	109	110	42
GORJ	20490	1,2	4932	15141	184	50	83	100	34
HARGHITA	26632	1,5	10866	15385	86	23	43	229	26
HUNEDOARA	35153	2,0	9176	25482	81	40	92	282	18
IALOMITA	16047	0,9	6114	9707	74	15	46	91	40
IASI	53942	3,1	14969	38361	164	34	70	344	7
MARAMURES	44045	2,6	17524	26198	124	37	39	123	11
MEHEDINTI	19349	1,1	6252	12871	82	19	27	98	35
MURES	43348	2,5	15953	27007	156	30	34	168	13
NEAMT	37786	2,2	13966	23435	161	29	30	165	17
OLT	24233	1,4	9471	14388	161	26	64	123	27
PRAHOVA	57213	3,3	17659	38984	177	50	72	271	5
SALAJ	16826	1,0	6554	10055	107	19	28	63	39
SATU MARE	29249	1,7	9646	19320	88	19	42	134	22
SIBIU	33501	1,9	8317	24765	119	34	108	158	19
SUCEAVA	43867	2,5	20839	22512	202	30	64	220	12
TELEORMAN	19343	1,1	6686	12257	152	21	45	182	36
TIMIS	60797	3,5	9896	50306	140	38	69	348	4
TULCEA	17755	1,0	6288	11129	66	18	42	212	37
VASLUI	21771	1,3	10400	11070	109	16	41	135	29
VALCEA	28264	1,6	11044	16862	168	40	37	113	24
VRANCEA	21187	1,2	6391	14535	104	16	27	114	32
MUN. BUCURESTI	327237	19,0	21951	303812	138	115	103	1118	1
ILFOV	28873	1,7	3589	24991	92	21	13	167	23

Table no. 5

**Number of incorporations in the trade registers by counties and business categories during  
December 1990 – February 2008**

County	Total		out of which:						RA	OC
			PF+AF	companies: 1272535						
	SNC	SCS		SRL	SA	No.	No.			
	No.	%	No.	No.	No.			No.		
0	1	2	3	4	5	6	7	8	9	
<b>Total ROMÂNIA</b>	<b>1725697</b>	<b>100,0</b>	<b>446415</b>	<b>32665</b>	<b>1579</b>	<b>1205579</b>	<b>32706</b>	<b>1350</b>	<b>5397</b>	
ALBA	27173	1,6	9400	890	11	16134	559	38	141	
ARAD	42305	2,5	15989	53	12	25386	680	27	157	
ARGES	44417	2,6	14187	107	15	29083	828	29	168	
BACAU	43094	2,5	14220	1299	4	26645	732	35	158	
BIHOR	52637	3,1	12640	126	47	38734	906	38	146	
BISTRITA-NASAUD	21054	1,2	7395	146	21	12958	417	19	98	
BOTOSANI	21189	1,2	9818	468	1	10305	454	21	122	
BRASOV	53994	3,1	11440	239	20	41275	860	46	114	
BRAILA	23651	1,4	6036	376	12	16584	519	28	96	
BUZAU	31569	1,8	9285	3747	46	17743	578	28	142	
CARAS-SEVERIN	21307	1,2	7363	117	9	13212	469	35	102	
CALARASI	17195	1,0	5043	609	3	11081	355	18	86	
CLUJ	80086	4,6	20482	2112	18	55971	1301	52	150	
CONSTANTA	72113	4,2	13970	311	23	56070	1485	51	203	
COVASNA	14712	0,9	5103	148	4	9067	298	24	68	
DAMBOVITA	31991	1,9	14382	60	8	16886	492	29	134	
DOLJ	45333	2,6	9340	1560	8	33335	888	40	162	
GALATI	40891	2,4	8457	1574	6	29845	844	30	135	
GIURGIU	14077	0,8	3382	35	8	10226	324	22	80	
GORJ	20490	1,2	4932	29	1	14805	489	50	184	
HARGHITA	26632	1,5	10866	62	7	15099	489	23	86	
HUNEDOARA	35153	2,0	9176	1166	98	23917	675	40	81	
IALOMITA	16047	0,9	6114	266	11	9219	348	15	74	
IASI	53942	3,1	14969	507	111	37144	1011	34	164	
MARAMURES	44045	2,6	17524	1927	23	23817	592	37	124	
MEHEDINTI	19349	1,1	6252	427	3	12236	330	19	82	
MURES	43348	2,5	15953	37	34	26468	670	30	156	
NEAMT	37786	2,2	13966	3293	30	19634	673	29	161	
OLT	24233	1,4	9471	1611	1	12473	490	26	161	
PRAHOVA	57213	3,3	17659	3122	14	35286	905	50	177	
SALAJ	16826	1,0	6554	600	4	9250	292	19	107	
SATU MARE	29249	1,7	9646	283	6	18729	478	19	88	
SIBIU	33501	1,9	8317	777	48	23542	664	34	119	
SUCEAVA	43867	2,5	20839	438	8	21762	588	30	202	
TELEORMAN	19343	1,1	6686	272	399	11394	419	21	152	
TIMIS	60797	3,5	9896	612	29	48820	1262	38	140	
TULCEA	17755	1,0	6288	1363	114	9427	479	18	66	
VASLUI	21771	1,3	10400	90	12	10731	413	16	109	
VALCEA	28264	1,6	11044	364	6	16155	487	40	168	
VRANCEA	21187	1,2	6391	356	10	13861	449	16	104	
MUN. BUCURESTI	327238	19,0	21951	1037	303	296793	6900	115	138	
ILFOV	28873	1,7	3589	49	31	24477	614	21	92	

Table no. 6

**Operations performed in the trade registers by counties and categories of registration in the month of February 2008**

County	Total of operations carried on		out of which:					
			New incorporations		Changes in statutory documents		Strike off companies	
	No.	%	No.	%	No.	%	No.	%
0	1	2	3	4	5	6	9	10
<b>Total ROMÂNIA</b>	<b>122606</b>	<b>100,0</b>	<b>15231</b>	<b>12,4</b>	<b>103537</b>	<b>84,4</b>	<b>3838</b>	<b>3,1</b>
ALBA	1159	100,0	262	22,6	810	69,9	87	7,5
ARAD	5448	100,0	351	6,4	5027	92,3	70	1,3
ARGES	2958	100,0	376	12,7	2488	84,1	94	3,2
BACAU	2040	100,0	381	18,7	1578	77,4	81	4,0
BIHOR	2382	100,0	615	25,8	1661	69,7	106	4,5
BISTRITA-NASAUD	643	100,0	170	26,4	437	68,0	36	5,6
BOTOSANI	4693	100,0	150	3,2	4490	95,7	53	1,1
BRASOV	2420	100,0	478	19,8	1664	68,8	278	11,5
BRAILA	6991	100,0	264	3,8	6707	95,9	20	0,3
BUZAU	1749	100,0	252	14,4	1316	75,2	181	10,3
CARAS-SEVERIN	861	100,0	154	17,9	684	79,4	23	2,7
CALARASI	652	100,0	177	27,1	459	70,4	16	2,5
CLUJ	4414	100,0	815	18,5	3440	77,9	159	3,6
CONSTANTA	3937	100,0	589	15,0	3276	83,2	72	1,8
COVASNA	529	100,0	122	23,1	360	68,1	47	8,9
DAMBOVITA	1470	100,0	224	15,2	1174	79,9	72	4,9
DOLJ	2156	100,0	373	17,3	1727	80,1	56	2,6
GALATI	2644	100,0	356	13,5	2215	83,8	73	2,8
GIURGIU	583	100,0	199	34,1	354	60,7	30	5,1
GORJ	860	100,0	156	18,1	653	75,9	51	5,9
HARGHITA	1335	100,0	322	24,1	917	68,7	96	7,2
HUNEDOARA	1855	100,0	263	14,2	1463	78,9	129	7,0
IALOMITA	2473	100,0	179	7,2	2213	89,5	81	3,3
IASI	4125	100,0	563	13,6	3406	82,6	156	3,8
MARAMURES	2399	100,0	324	13,5	1984	82,7	91	3,8
MEHEDINTI	4264	100,0	174	4,1	4054	95,1	36	0,8
MURES	1388	100,0	343	24,7	991	71,4	54	3,9
NEAMT	1198	100,0	234	19,5	889	74,2	75	6,3
OLT	1274	100,0	234	18,4	866	68,0	174	13,7
PRAHOVA	3265	100,0	542	16,6	2524	77,3	199	6,1
SALAJ	827	100,0	197	23,8	587	71,0	43	5,2
SATU MARE	1830	100,0	303	16,6	1482	81,0	45	2,5
SIBIU	2041	100,0	310	15,2	1622	79,5	109	5,3
SUCEAVA	2251	100,0	315	14,0	1770	78,6	166	7,4
TELEORMAN	664	100,0	129	19,4	512	77,1	23	3,5
TIMIS	3178	100,0	609	19,2	2442	76,8	127	4,0
TULCEA	5138	100,0	100	1,9	4986	97,0	52	1,0
VASLUI	5369	100,0	137	2,6	5187	96,6	45	0,8
VALCEA	1721	100,0	227	13,2	1353	78,6	141	8,2
VRANCEA	1381	100,0	186	13,5	1155	83,6	40	2,9
MUN. BUCURESTI	23560	100,0	2609	11,1	20650	87,6	301	1,3
ILFOV	2481	100,0	467	18,8	1964	79,2	50	2,0

Table no.7

**Number of incorporations in the trade registers by counties and capital sources in the month of February 2008**

County	Total		out of which:					Ranking by: *	
			Private capital			State majority capital			Mixed capital (state+private)
			out of which:			out of which:			
			PF+AF	Companies	OC	RA	Companies		Companies
No.	%	No.	No.	No.	No.	No.	No.		
0	1	2	3	4	5	6	7	8	9
<b>Total ROMÂNIA</b>	<b>15231</b>	<b>100,0</b>	<b>4267</b>	<b>10958</b>		<b>1</b>	<b>1</b>	<b>4</b>	<b>X</b>
ALBA	262	1,7	113	149					23
ARAD	351	2,3	112	239					14
ARGES	376	2,5	84	292					11
BACAU	381	2,5	124	254				3	10
BIHOR	615	4,0	229	386					3
BISTRITA-NASAUD	170	1,1	31	139					35
BOTOSANI	150	1,0	75	75					38
BRASOV	478	3,1	116	361		1			8
BRAILA	264	1,7	146	118					21
BUZAU	252	1,7	74	178					24
CARAS-SEVERIN	154	1,0	39	115					37
CALARASI	177	1,2	68	109					33
CLUJ	815	5,4	255	560					2
CONSTANTA	589	3,9	145	444					5
COVASNA	122	0,8	51	71					41
DAMBOVITA	224	1,5	75	149					28
DOLJ	373	2,4	108	264			1		12
GALATI	356	2,3	114	242					13
GIURGIU	199	1,3	55	144					29
GORJ	156	1,0	41	115					36
HARGHITA	322	2,1	196	126					17
HUNEDOARA	263	1,7	50	213					22
IALOMITA	179	1,2	88	91					32
IASI	563	3,7	175	388					6
MARAMURES	324	2,1	89	235					16
MEHEDINTI	174	1,1	69	105					34
MURES	343	2,3	94	249					15
NEAMT	234	1,5	65	169					25
OLT	234	1,5	90	144					26
PRAHOVA	542	3,6	173	369					7
SALAJ	197	1,3	69	128					30
SATU MARE	303	2,0	114	189					20
SIBIU	310	2,0	99	211					19
SUCEAVA	315	2,1	127	188					18
TELEORMAN	129	0,8	50	79					40
TIMIS	609	4,0	124	485					4
TULCEA	100	0,7	40	60					42
VASLUI	137	0,9	53	84					39
VALCEA	227	1,5	86	141					27
VRANCEA	186	1,2	42	144					31
MUN. BUCURESTI	2609	17,1	276	2333					1
ILFOV	467	3,1	43	423				1	9

Table no.8

**Number of incorporations in the trade registers by counties and business categories  
in the month of February 2008**

County	Total		out of which:						
			PF+AF	companies: 10963				RA	OC
	SNC	SCS		SRL	SA				
	No.	%	No.	No.	No.	No.	No.	No.	
0	1	2	3	4	5	6	7	8	9
<b>Total ROMÂNIA</b>	<b>15231</b>	<b>100,0</b>	<b>4267</b>		<b>1</b>	<b>10879</b>	<b>83</b>	<b>1</b>	
ALBA	262	1,7	113			149			
ARAD	351	2,3	112		1	237	1		
ARGES	376	2,5	84			292			
BACAU	381	2,5	124			255	2		
BIHOR	615	4,0	229			385	1		
BISTRITA-NASAUD	170	1,1	31			139			
BOTOSANI	150	1,0	75			74	1		
BRASOV	478	3,1	116			359	2	1	
BRAILA	264	1,7	146			118			
BUZAU	252	1,7	74			177	1		
CARAS-SEVERIN	154	1,0	39			112	3		
CALARASI	177	1,2	68			108	1		
CLUJ	815	5,4	255			547	13		
CONSTANTA	589	3,9	145			443	1		
COVASNA	122	0,8	51			71			
DAMBOVITA	224	1,5	75			147	2		
DOLJ	373	2,4	108			261	4		
GALATI	356	2,3	114			241	1		
GIURGIU	199	1,3	55			144			
GORJ	156	1,0	41			115			
HARGHITA	322	2,1	196			126			
HUNEDOARA	263	1,7	50			213			
IALOMITA	179	1,2	88			90	1		
IASI	563	3,7	175			387	1		
MARAMURES	324	2,1	89			235			
MEHEDINTI	174	1,1	69			104	1		
MURES	343	2,3	94			246	3		
NEAMT	234	1,5	65			166	3		
OLT	234	1,5	90			144			
PRAHOVA	542	3,6	173			366	3		
SALAJ	197	1,3	69			128			
SATU MARE	303	2,0	114			183	6		
SIBIU	310	2,0	99			209	2		
SUCEAVA	315	2,1	127			185	3		
TELEORMAN	129	0,8	50			79			
TIMIS	609	4,0	124			483	2		
TULCEA	100	0,7	40			60			
VASLUI	137	0,9	53			84			
VALCEA	227	1,5	86			141			
VRANCEA	186	1,2	42			144			
MUN. BUCURESTI	2609	17,1	276			2309	24		
ILFOV	467	3,1	43			423	1		

Table no. 9

**Number of incorporations in the trade registers by domains of activity and business categories in the month of February 2008**

CAEN segment	Field of activity	Total		out of which:						
				PF+AF	companies: 10963				RA	OC
		No.	%		No.	SNC	SCS	SRL		
				No.		No.	No.	No.	No.	No.
0	1	2	3	4	5	6	7	8	9	10
	<b>Total ROMÂNIA</b>	<b>15231</b>	<b>100,0</b>	<b>4267</b>		<b>1</b>	<b>10879</b>	<b>83</b>	<b>1</b>	
1	Agriculture, hunting and related service activities	339	2,2	164			174	1		
2	Forestry and logging	92	0,6	14			77		1	
3	Fishing and aquaculture	388	2,5	377			11			
5	Mining of hard and brown coal	14	0,1	14						
6	Extraction of crude petroleum and natural gas									
7	Mining of metal ores									
8	Other mining and quarrying	16	0,1				16			
9	Mining support service activities	4	0,0	1			3			
10	Manufacture of food products	89	0,6	27			62			
11	Manufacture of beverages	14	0,1	7			7			
12	Manufacture of tobacco products									
13	Manufacture of textiles	30	0,2	9			21			
14	Manufacture of wearing apparel	81	0,5	30			51			
15	Tanning and dressing of leather; manufacture of luggage, handbags, saddlery, harness and footwear; dressing and dyeing of fur	21	0,1	4			17			
16	Manufacture of wood and of products of wood and cork, except furniture; manufacture of articles of straw and plaiting materials	100	0,7	32			68			
17	Manufacture of paper and paper products	11	0,1				11			
18	Printing and reproduction of recorded media	33	0,2	3			29		1	
19	Manufacture of coke and refined petroleum products	1	0,0				1			
20	Manufacture of chemicals and chemical products	4	0,0				3		1	
21	Manufacture of basic pharmaceutical products and pharmaceutical preparations	1	0,0				1			
22	Manufacture of rubber and plastic products	83	0,5	5			78			
23	Manufacture of other non-metallic mineral products	61	0,4	19			42			
24	Manufacture of basic metals	5	0,0				5			
25	Manufacture of fabricated metal products, except machinery and equipment	140	0,9	46			93		1	
26	Manufacture of computer, electronic and optical products	8	0,1	2			6			
27	Manufacture of electrical equipment	5	0,0	1			4			
28	Manufacture of machinery and equipment n.e.c.	15	0,1	4			11			
29	Manufacture of motor vehicles, trailers and semi-trailers	10	0,1				10			
30	Manufacture of other transport equipment	7	0,0				7			
31	Manufacture of furniture	103	0,7	10			93			
32	Other manufacturing	49	0,3	32			17			
33	Repair and installation of machinery and equipment	51	0,3	13			37		1	
35	Electricity, gas, steam and air conditioning supply	33	0,2				32		1	
36	Water collection, treatment and supply	1	0,0				1			
37	Sewerage	10	0,07				10			
38	Waste collection, treatment and disposal activities; materials recovery	29	0,19	1			28			
39	Remediation activities and other waste management services	1	0,01				1			
41	Construction of buildings	1073	7,04	25			1047		1	
42	Civil engineering	68	0,45	5			61		2	
43	Specialised construction activities	676	4,44	131			545			
45	Wholesale and retail trade and repair of motor vehicles and motorcycles	329	2,16	47			282			
46	Wholesale trade, except of motor vehicles and motorcycles	833	5,47	82			751			
47	Retail trade, except of motor vehicles and motorcycles	1494	9,81	385			1109			
49	Land transport and transport via pipelines	799	5,25	218			581			
50	Water transport	16	0,11	3			13			

**Table no. 9**  
(continuance)

**Number of incorporations in the trade registers by domains of activity and business categories in the month of February 2008**

CAEN segment	Field of activity	Total		out of which:						
				PF+AF	companies: 10963				RA	OC
		No.	%		No.	SNC	SCS	SRL		
		0	1	2	3	4	5	6	7	8
	<b>Total ROMÂNIA</b>	<b>15231</b>	<b>100,0</b>	<b>4267</b>		<b>1</b>	<b>10879</b>	<b>83</b>	<b>1</b>	
51	Air transport	14	0,1	3			11			
52	Warehousing and support activities for transportation	75	0,5	10			65			
53	Postal and courier activities	48	0,3	29			19			
55	Accommodation	148	1,0	36			112			
56	Food and beverage service activities	398	2,6	24			374			
58	Publishing activities	72	0,5	22			50			
59	motion picture, video and television programme production, sound recording and music publishing activities	34	0,2	6			28			
60	Programming and broadcasting activities	6	0,0	1			4	1		
61	Telecommunications	58	0,4	3			55			
62	Computer programming, consultancy and related activities	285	1,9	164			120	1		
63	Information service activities	89	0,6	45			43	1		
64	Financial service activities, except insurance and pension funding	52	0,3	5			20	27		
65	Insurance, reinsurance and pension funding, except compulsory social security	7	0,0	3				4		
66	Activities auxiliary to financial services and insurance activities	136	0,9	13			121	2		
68	Real estate activities	563	3,7	16		1	528	18		
69	Legal and accounting activities	162	1,1	11			151			
70	Activities of head offices; management consultancy	459	3,0	76			381	2		
71	Architectural and engineering activities; technical testing and analysis	330	2,2	92			237	1		
72	Scientific research and development	14	0,1	7			7			
73	Advertising and market research	196	1,3	18			177	1		
74	Other professional, scientific and technical activities	338	2,2	171			166	1		
75	Veterinary activities	26	0,2	4			22			
77	Rental and leasing activities	72	0,5	8			64			
78	Employment activities	64	0,4	3			61			
79	Travel agency, tour operator and other reservation service and related activities	64	0,4	6			58			
80	Security and investigation activities	34	0,2	1			33			
81	Services to buildings and landscape activities	121	0,8	12			109			
82	Office administrative, office support and other business support activities	305	2,0	209			94	2		
84	Public administration and defence; compulsory social security	4	0,0	1			3			
85	Education	262	1,7	192			70			
86	Human health activities	108	0,7	4			104			
87	Residential care activities	3	0,0				3			
88	Social work activities without accommodation	5	0,0	2			3			
90	Creative, arts and entertainment activities	79	0,5	44			35			
91	Libraries, archives, museums and other cultural activities	8	0,1	4			4			
92	Gambling and betting activities	23	0,2				23			
93	Sports activities and amusement and recreation activities	79	0,5	21			57	1		
94	Activities of membership organisations									
95	Repair of computers and personal and household goods	93	0,6	35			58			
96	Other personal service activities	353	2,3	188			165			
97	Activities of households as employers or domestic personnel	10	0,1	8			2			
98	Undifferentiated goods- and services-producing activities of private households for own use	1	0,0	1						

Table no. 10

**Number of incorporated trading companies and the value of the subscribed share capital, by counties, in the month of February 2008**

County	Total registered companies		Subscribed capital		Average subscribed capital on company
	No.	%	thousand Lei	%	thousand Lei
0	1	2	3	4	5
<b>Total ROMÂNIA</b>	<b>10963</b>	<b>100,0</b>	<b>349645,0</b>	<b>100,0</b>	<b>32,0</b>
ALBA	149	1,4	123,0	0,0	0,8
ARAD	239	2,2	15169,8	4,3	63,5
ARGES	292	2,7	1117,6	0,3	3,8
BACAU	257	2,3	126,6	0,0	0,5
BIHOR	386	3,5	1124,2	0,3	2,9
BISTRITA-NASAUD	139	1,3	97,5	0,0	0,7
BOTOSANI	75	0,7	82,6	0,0	1,1
BRASOV	361	3,3	543,6	0,2	1,5
BRAILA	118	1,1	600,6	0,2	5,1
BUZAU	178	1,6	8464,0	2,4	47,8
CARAS-SEVERIN	115	1,0	297,3	0,1	2,6
CALARASI	109	1,0	1995,2	0,6	18,3
CLUJ	560	5,1	26652,6	7,6	47,9
CONSTANTA	444	4,0	256,0	0,1	0,6
COVASNA	71	0,6	817,2	0,2	11,5
DAMBOVITA	149	1,4	1159,9	0,3	7,8
DOLJ	265	2,4	9560,7	2,7	36,2
GALATI	242	2,2	499,3	0,1	2,1
GIURGIU	144	1,3	59,3	0,0	0,4
GORJ	115	1,0	286,0	0,1	2,5
HARGHITA	126	1,1	1637,7	0,5	13,0
HUNEDOARA	213	1,9	420,5	0,1	2,0
IALOMITA	91	0,8	38,1	0,0	0,4
IASI	388	3,5	4698,7	1,3	12,1
MARAMURES	235	2,1	145,3	0,0	0,6
MEHEDINTI	105	1,0	74,3	0,0	0,7
MURES	249	2,3	1222,7	0,3	4,9
NEAMT	169	1,5	2130,0	0,6	12,8
OLT	144	1,3	406,1	0,1	2,8
PRAHOVA	369	3,4	1321,9	0,4	3,6
SALAJ	128	1,2	47,6	0,0	0,4
SATU MARE	189	1,7	1005,2	0,3	5,3
SIBIU	211	1,9	6334,9	1,8	30,3
SUCEAVA	188	1,7	94,8	0,0	0,5
TELEORMAN	79	0,7	194,8	0,1	2,5
TIMIS	485	4,4	18386,9	5,3	38,1
TULCEA	60	0,5	89,9	0,0	1,5
VASLUI	84	0,8	24,1	***	0,3
VALCEA	141	1,3	151,6	0,0	1,1
VRANCEA	144	1,3	201,6	0,1	1,4
MUN. BUCURESTI	2333	21,3	218153,5	62,4	94,0
ILFOV	424	3,9	23831,8	6,8	56,3

Table no. 11

**Number of incorporated trading companies and the value of the subscribed share capital by legal forms, in the month of February 2008**

Company type	Total registered companies		Subscribed capital		Average subscribed capital on company
	No.	%	thousand Lei	%	thousand Lei
0	1	2	3	4	5
<b>Total ROMÂNIA</b>	<b>10963</b>	<b>100,0</b>	<b>349645,0</b>	<b>100,0</b>	<b>32,0</b>
<b>SNC</b>	1 ***		0,2	***	0,2
<b>SCS</b>	83	0,8	174383,8	49,9	3558,9
<b>SRL</b>	10879	99,2	175261,0	50,1	16,1
<b>SCA</b>					

*Note: The average does not include filials because according to the Law no.31/1990 they are not juridical persons*

\*\*\* Less than 0,01%

Diagram no.5

