



MINISTRY OF JUSTICE

THE NATIONAL TRADE REGISTER OFFICE

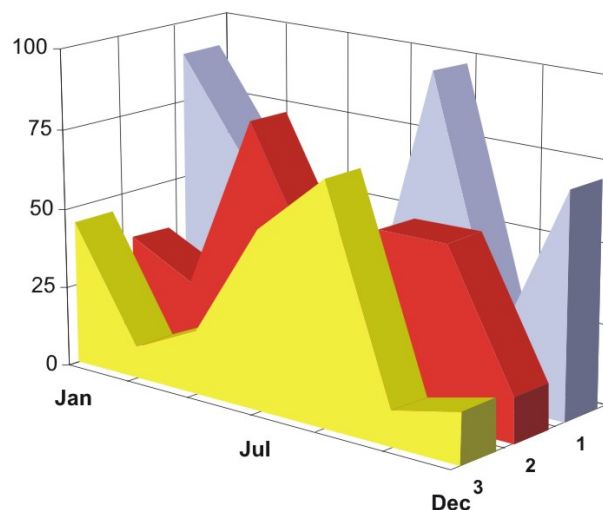
București, Bd. Unirii nr. 74, Bl. J3b, tronson II+III, sector 3; Telefon: +40 21 316.08.04, 316.08.10; Fax: +40 21 316.08.03; Cod poștal: 030837
Website: www.onrc.ro; E-mail: onrc@onrc.ro; Cod identificare Fiscală: 14942091

PROCEEDINGS IN THE CENTRAL TRADE REGISTER

STATISTICAL SYNTHESIS

OF

**RECORDS IN THE CENTRAL TRADE REGISTER
- the 31th of January 2008 - provisional data -**



- ISSUE No. 194 -

**MINISTRY OF JUSTICE
THE NATIONAL TRADE REGISTER OFFICE**

- Operations such as incorporation of trading companies, submission of changes, and strike-off are carried out based on Law No.26/1990, as republished, Law No.31/1990, as republished and on the Methodological Norms no. P/608/1998.

- This work reflects the evolution of the operations with the Trade Register Office attached to Bucharest Law Court and the Trade Register Offices attached to County Law Courts.

- The data contained in the Central Trade Register refer to operations for which law sets out the obligation of being registered in the trade registers kept by the 42 trade register offices attached to law courts.

• The content of this publication shall not be reproduced, partly or entirely, in original or modified form, and shall not be stored in a recovery system and shall not be transmitted in any form or by any means without prior written authorization of the Ministry of Justice – The National Trade Register Office.

• The content of this publication may be used in articles, studies, books, as supporting or explanatory data only by clearly and accurately indicating the source.

CONTENTS

Page

1	Definitions	1
2.1	Data related to December 1990 –January 2008	3
<hr/>		
	Table no.1 – Operations performed in the trade registers by categories of registration during December 1990 –January 2008, total by country and by counties, share of counties in the total by country	3
	Table no.2 – Operations performed in the trade registers during December 1990 –January 2008, total by country and counties, share of categories of operations in the total of each county	4
	Table no. 3 – Number and structure of incorporations in the trade registers during December 1990-January 2008	5
	Diagram no. 1 - Yearly percentage of new registered companies in the Trade Registry	
	Table no. 4 – Number of incorporations in the trade registers by counties and capital sources during December 1990 - January 2008	6
	Table no. 5 – Number of incorporations in the trade registers by counties and business categories during December 1990 –January 2008	7
<hr/>		
2.2	Data related to January 2008	8
<hr/>		
	Table no. 6 – Operations performed in the trade registers by counties and categories of registration in the month of January 2008	8
	Table no. 7 – Number of incorporations in the trade registers by counties and capital sources in the month of January 2008	9
	Table no. 8 – Number of incorporations in the trade registers by counties and business categories in the month of January 2008	10
	Table no. 9 –Number of incorporations in the trade registers by domains of activity and business categories in the month of January 2008	11-12
	Table no. 10 – Number of incorporated trading companies and the value of the subscribed share capital, by counties, in the month of January 2008	13
	Table no. 11– Number of incorporated trading companies and the value of the subscribed share capital by legal forms, in the month of January 2008	14
	Chart no. 5 – Average value of the subscribed share capital by types of trading companies in the month of January 2008	14

Definitions

The Trade Register Office was established based on Law No. 26/1990, as republished and subsequently amended and supplemented, operates as an active institution as of December 1990 and is twofold structured:

- at national level, represented by the National Trade Register Office organized under the authority of the Ministry of Justice
- at local level, represented by the 42 Trade Register Offices attached to Law Courts, organized under the subordination of the National Trade Register Office

The business categories subject to registration in the trade register are:

- natural persons and family associations usually carrying on trading activities, trading companies, national companies, autonomous administrations, and co-operative organizations
- branches registered as trading companies with legal personality, having the setting-up, operation and incorporation legal regime of the type of legal form.

• Terms used in tables and charts

➤ **Number of companies:** depending on the table, the number of companies incorporated during the reference period, the number of companies struck-off from the trade register.

➤ **Value of subscribed share capital:**

- **total, in national currency:** the share capital value resulted by adding up the subscribed values (in cash and in kind) in national currency (lei)

➤ **Regions of economic development:**

<i>North-East:</i>	Suceava, Botoșani, Neamț, Iași, Bacău, Vaslui.
<i>South-East:</i>	Vrancea, Galați, Buzău, Brăila, Tulcea, Constanța.
<i>South-Muntenia:</i>	Argeș, Dâmbovița, Prahova, Teleorman, Giurgiu, Călărași, Ialomița.
<i>South-West Oltenia:</i>	Gorj, Vâlcea, Dolj, Mehedinți, Olt.
<i>West:</i>	Arad, Caraș-Severin, Hunedoara, Timiș.
<i>North-West:</i>	Bihor, Bistrița, Cluj, Satu Mare, Sălaj, Maramureș.
<i>Center:</i>	Alba, Brașov, Covasna, Harghita, Mureș, Sibiu.
<i>Bucharest-Ilfov:</i>	București, Ilfov.

NACE Code – The Classification of Economic Activities in the European Community was approved by GO No. 656/1997, amended by Order No 601/2002 and by Order no. 337/2007 of the President of the National Institute of Statistics, and complies with the international classification used in statistic reports and official documents. Activities are ranked by the harmonization principle by sections, divisions, groups and classes.

Abbreviations

- **PF** - Authorized Natural Person
- **AF** - Family Association
- **SNC** - General Partnership
- **SCS** - Limited Partnership
- **SA** - Joint-Stock Company
- **SRL** - Limited Liability Company
- **RA** - Autonomous Administration
- **OC** - Co-operative Organization

Sources of Information:

The integrated IT system of the trade register is designed by The National Trade Register Office in compliance with the provisions of the related legislation in force. The source of information consists of the trade registers organized in a computerized system, kept by the trade register offices attached to law courts.

Table no. 1

Operations performed in the trade registers by categories of registration during December 1990 – January 2008, total by country and by counties, share of counties in the total by country

Counties	Total of registered operations		out of which :					
			Registered companies		Changes in statutory documents		Strike off companies	
	No.	%	No.	%	No.	%	No.	%
0	1	2	3	4	5	6	11	12
Total ROMÂNIA	9099937	100,0	1710466	100,0	6868619	100,0	520852	100,0
ALBA	119124	1,3	26911	1,6	87126	1,3	5087	1,0
ARAD	206099	2,3	41954	2,5	153532	2,2	10613	2,0
ARGES	219744	2,4	44041	2,6	166002	2,4	9701	1,9
BACAU	209168	2,3	42713	2,5	154464	2,2	11991	2,3
BIHOR	264307	2,9	52022	3,0	197330	2,9	14955	2,9
BISTRITA-NASAUD	109887	1,2	20884	1,2	82543	1,2	6460	1,2
BOTOSANI	83531	0,9	21039	1,2	56682	0,8	5810	1,1
BRASOV	302933	3,3	53516	3,1	237693	3,5	11724	2,3
BRAILA	120189	1,3	23387	1,4	92883	1,4	3919	0,8
BUZAU	164579	1,8	31317	1,8	122631	1,8	10631	2,0
CARAS-SEVERIN	113574	1,2	21153	1,2	84068	1,2	8353	1,6
CALARASI	75642	0,8	17018	1,0	53744	0,8	4880	0,9
CLUJ	404771	4,4	79271	4,6	311719	4,5	13781	2,6
CONSTANTA	398829	4,4	71524	4,2	301145	4,4	26160	5,0
COVASNA	80907	0,9	14590	0,9	61802	0,9	4515	0,9
DAMBOVITA	135742	1,5	31767	1,9	90417	1,3	13558	2,6
DOLJ	249661	2,7	44960	2,6	192010	2,8	12691	2,4
GALATI	246416	2,7	40535	2,4	191803	2,8	14078	2,7
GIURGIU	66423	0,7	13878	0,8	47446	0,7	5099	1,0
GORJ	130975	1,4	20334	1,2	104205	1,5	6436	1,2
HARGHITA	132580	1,5	26310	1,5	101539	1,5	4731	0,9
HUNEDOARA	178047	2,0	34890	2,0	130731	1,9	12426	2,4
IALOMITA	84893	0,9	15868	0,9	63122	0,9	5903	1,1
IASI	305538	3,4	53379	3,1	240026	3,5	12133	2,3
MARAMURES	187535	2,1	43721	2,6	132860	1,9	10954	2,1
MEHEDINTI	94188	1,0	19175	1,1	67022	1,0	7991	1,5
MURES	254027	2,8	43005	2,5	196697	2,9	14325	2,8
NEAMT	191867	2,1	37552	2,2	139874	2,0	14441	2,8
OLT	114539	1,3	23999	1,4	81447	1,2	9093	1,7
PRAHOVA	314004	3,5	56671	3,3	242135	3,5	15198	2,9
SALAJ	77258	0,8	16629	1,0	55697	0,8	4932	0,9
SATU MARE	145955	1,6	28946	1,7	106631	1,6	10378	2,0
SIBIU	197297	2,2	33191	1,9	155831	2,3	8275	1,6
SUCEAVA	230250	2,5	43552	2,5	169659	2,5	17039	3,3
TELEORMAN	101130	1,1	19214	1,1	77151	1,1	4765	0,9
TIMIS	325617	3,6	60188	3,5	248657	3,6	16772	3,2
TULCEA	93666	1,0	17655	1,0	70775	1,0	5236	1,0
VASLUI	104025	1,1	21634	1,3	73848	1,1	8543	1,6
VALCEA	140134	1,5	28037	1,6	103483	1,5	8614	1,7
VRANCEA	113193	1,2	21001	1,2	87543	1,3	4649	0,9
MUN. BUCURESTI	1881109	20,7	324629	19,0	1439023	21,0	117457	22,6
ILFOV	130584	1,4	28406	1,7	95623	1,4	6555	1,3

Table no. 2

**Operations performed in the trade registers during December 1990 –
January 2008, total by country and counties, share of categories of
operations in the total of each county**

Counties	Total of registered operations		out of which :					
			Registered companies		Changes in statutory documents		Strike off companies	
	No.	%	No.	%	No.	%	No.	%
0	1	2	3	4	5	6	11	12
Total ROMÂNIA	9099937	100,0	1710466	18,8	6868619	75,5	520852	5,7
ALBA	119124	100,0	26911	22,6	87126	73,1	5087	4,3
ARAD	206099	100,0	41954	20,4	153532	74,5	10613	5,1
ARGES	219744	100,0	44041	20,0	166002	75,5	9701	4,4
BACAU	209168	100,0	42713	20,4	154464	73,8	11991	5,7
BIHOR	264307	100,0	52022	19,7	197330	74,7	14955	5,7
BISTRITA-NASAUD	109887	100,0	20884	19,0	82543	75,1	6460	5,9
BOTOSANI	83531	100,0	21039	25,2	56682	67,9	5810	7,0
BRASOV	302933	100,0	53516	17,7	237693	78,5	11724	3,9
BRAILA	120189	100,0	23387	19,5	92883	77,3	3919	3,3
BUZAU	164579	100,0	31317	19,0	122631	74,5	10631	6,5
CARAS-SEVERIN	113574	100,0	21153	18,6	84068	74,0	8353	7,4
CALARASI	75642	100,0	17018	22,5	53744	71,1	4880	6,5
CLUJ	404771	100,0	79271	19,6	311719	77,0	13781	3,4
CONSTANTA	398829	100,0	71524	17,9	301145	75,5	26160	6,6
COVASNA	80907	100,0	14590	18,0	61802	76,4	4515	5,6
DAMBOVITA	135742	100,0	31767	23,4	90417	66,6	13558	10,0
DOLJ	249661	100,0	44960	18,0	192010	76,9	12691	5,1
GALATI	246416	100,0	40535	16,4	191803	77,8	14078	5,7
GIURGIU	66423	100,0	13878	20,9	47446	71,4	5099	7,7
GORJ	130975	100,0	20334	15,5	104205	79,6	6436	4,9
HARGHITA	132580	100,0	26310	19,8	101539	76,6	4731	3,6
HUNEDOARA	178047	100,0	34890	19,6	130731	73,4	12426	7,0
IALOMITA	84893	100,0	15868	18,7	63122	74,4	5903	7,0
IASI	305538	100,0	53379	17,5	240026	78,6	12133	4,0
MARAMURES	187535	100,0	43721	23,3	132860	70,8	10954	5,8
MEHEDINTI	94188	100,0	19175	20,4	67022	71,2	7991	8,5
MURES	254027	100,0	43005	16,9	196697	77,4	14325	5,6
NEAMT	191867	100,0	37552	19,6	139874	72,9	14441	7,5
OLT	114539	100,0	23999	21,0	81447	71,1	9093	7,9
PRAHOVA	314004	100,0	56671	18,0	242135	77,1	15198	4,8
SALAJ	77258	100,0	16629	21,5	55697	72,1	4932	6,4
SATU MARE	145955	100,0	28946	19,8	106631	73,1	10378	7,1
SIBIU	197297	100,0	33191	16,8	155831	79,0	8275	4,2
SUCEAVA	230250	100,0	43552	18,9	169659	73,7	17039	7,4
TELEORMAN	101130	100,0	19214	19,0	77151	76,3	4765	4,7
TIMIS	325617	100,0	60188	18,5	248657	76,4	16772	5,2
TULCEA	93666	100,0	17655	18,8	70775	75,6	5236	5,6
VASLUI	104025	100,0	21634	20,8	73848	71,0	8543	8,2
VALCEA	140134	100,0	28037	20,0	103483	73,8	8614	6,1
VRANCEA	113193	100,0	21001	18,6	87543	77,3	4649	4,1
MUN. BUCURESTI	1881109	100,0	324629	17,3	1439023	76,5	117457	6,2
ILFOV	130584	100,0	28406	21,8	95623	73,2	6555	5,0

Table no.3

Number and structure of incorporations in the trade registers during December 1990-
December 2007

Period (year, month)	Registered companies	Percentage	
	No.	%	%
0	1	2	3
Total, 30 September 2007, out of which	1710466	100,00	
Year 1990	81	0,00	
Year 1991	95840	5,60	
Year 1992	137456	8,04	
Year 1993	117078	6,84	
Year 1994	137445	8,04	
Year 1995	65479	3,83	
Year 1996	62089	3,63	
Year 1997	55663	3,25	
Year 1998	63878	3,73	
Year 1999	57197	3,34	
Year 2000	57291	3,35	
Year 2001	61265	3,58	
Year 2002	84780	4,96	
Year 2003	123582	7,23	
Year 2004	144284	8,44	
Year 2005	157375	9,20	
Year 2006	135211	7,90	
Year 2007	135211	8,46	
Year 2008 (I - XII) out of which :	9831		100,0
January	9831		100,0

Note: Column 2 reveals the annual structure of incorporations; column 3 reveals the structure by months during the current year.

Diagram no.1

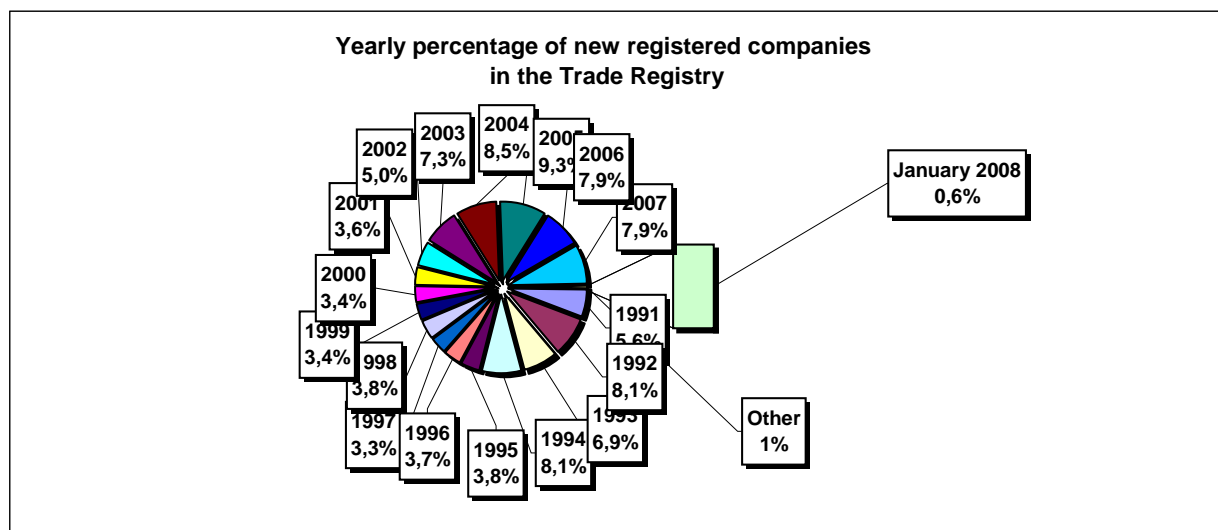


Table no. 4

**Number of incorporations in the trade registers by counties and capital sources during
December 1990 - January 2008**

Counties	Total		out of which:					Ranking by: *	
			Private capital			State majority capital			Mixed capital (state+private)
			out of which:			out of which:			
			PF+AF	Companies	OC	RA	Companies		Companies
No.	%	No.	No.	No.	No.	No.	No.		
0	1	2	3	4	5	6	7	8	9
Total ROMÂNIA	1710466	100,0	442148	1250604	5397	1349	2373	8595	X
ALBA	26911	1,6	9287	17228	141	38	47	170	25
ARAD	41955	2,5	15877	25518	157	27	41	335	15
ARGES	44041	2,6	14103	29560	168	29	29	152	10
BACAU	42713	2,5	14096	28159	158	35	42	223	14
BIHOR	52022	3,0	12411	39057	146	38	62	308	8
BISTRITA-NASAUD	20884	1,2	7364	13265	98	19	29	109	33
BOTOSANI	21039	1,2	9743	10861	122	21	173	119	31
BRASOV	53516	3,1	11324	41776	114	45	87	170	6
BRAILA	23387	1,4	5890	17162	96	28	45	166	28
BUZAU	31317	1,8	9211	21763	142	28	42	131	21
CARAS-SEVERIN	21153	1,2	7324	13490	102	35	65	137	30
CALARASI	17018	1,0	4975	11767	86	18	77	95	38
CLUJ	79271	4,6	20227	58540	150	52	40	262	2
CONSTANTA	71524	4,2	13825	56851	203	51	51	543	3
COVASNA	14590	0,9	5052	9305	68	24	32	109	41
DAMBOVITA	31767	1,9	14307	17069	134	29	75	153	20
DOLJ	44960	2,6	9232	35266	162	40	57	203	9
GALATI	40535	2,4	8343	31833	135	30	51	143	16
GIURGIU	13878	0,8	3327	10230	80	22	109	110	42
GORJ	20334	1,2	4891	15026	184	50	83	100	34
HARGHITA	26310	1,5	10670	15259	86	23	43	229	26
HUNEDOARA	34890	2,0	9126	25269	81	40	92	282	18
IALOMITA	15868	0,9	6026	9616	74	15	46	91	40
IASI	53379	3,1	14794	37973	164	34	70	344	7
MARAMURES	43721	2,6	17435	25963	124	37	39	123	11
MEHEDINTI	19175	1,1	6183	12766	82	19	27	98	36
MURES	43005	2,5	15859	26758	156	30	34	168	13
NEAMT	37552	2,2	13901	23266	161	29	30	165	17
OLT	23999	1,4	9381	14244	161	26	64	123	27
PRAHOVA	56671	3,3	17486	38615	177	50	72	271	5
SALAJ	16629	1,0	6485	9927	107	19	28	63	39
SATU MARE	28946	1,7	9532	19131	88	19	42	134	22
SIBIU	33191	1,9	8218	24554	119	34	108	158	19
SUCEAVA	43552	2,5	20712	22324	202	30	64	220	12
TELEORMAN	19214	1,1	6636	12178	152	21	45	182	35
TIMIS	60188	3,5	9772	49821	140	38	69	348	4
TULCEA	17655	1,0	6248	11069	66	18	42	212	37
VASLUI	21634	1,3	10347	10986	109	16	41	135	29
VALCEA	28037	1,6	10958	16721	168	40	37	113	24
VRANCEA	21001	1,2	6349	14391	104	16	27	114	32
MUN. BUCURESTI	324628	19,0	21675	301479	138	115	103	1118	1
ILFOV	28406	1,7	3546	24568	92	21	13	166	23

Table no. 5

**Number of incorporations in the trade registers by counties and business categories during
December 1990 – January 2008**

County	Total		out of which:						
			PF+AF	companies: 1261566				RA	OC
	SNC	SCS		SRL	SA	No.	No.		
	No.	%	No.	No.	No.			No.	No.
0	1	2	3	4	5	6	7	8	9
Total ROMÂNIA	1710466	100,0	442148	32665	1578	1194700	32623	1349	5397
ALBA	26911	1,6	9287	890	11	15985	559	38	141
ARAD	41954	2,5	15877	53	11	25149	679	27	157
ARGES	44041	2,6	14103	107	15	28791	828	29	168
BACAU	42713	2,5	14096	1299	4	26390	730	35	158
BIHOR	52022	3,0	12411	126	47	38349	905	38	146
BISTRITA-NASAUD	20884	1,2	7364	146	21	12819	417	19	98
BOTOSANI	21039	1,2	9743	468	1	10231	453	21	122
BRASOV	53516	3,1	11324	239	20	40916	858	45	114
BRAILA	23387	1,4	5890	376	12	16466	519	28	96
BUZAU	31317	1,8	9211	3747	46	17566	577	28	142
CARAS-SEVERIN	21153	1,2	7324	117	9	13100	466	35	102
CALARASI	17018	1,0	4975	609	3	10973	354	18	86
CLUJ	79271	4,6	20227	2112	18	55424	1288	52	150
CONSTANTA	71524	4,2	13825	311	23	55627	1484	51	203
COVASNA	14590	0,9	5052	148	4	8996	298	24	68
DAMBOVITA	31767	1,9	14307	60	8	16739	490	29	134
DOLJ	44960	2,6	9232	1560	8	33074	884	40	162
GALATI	40535	2,4	8343	1574	6	29604	843	30	135
GIURGIU	13878	0,8	3327	35	8	10082	324	22	80
GORJ	20334	1,2	4891	29	1	14690	489	50	184
HARGHITA	26310	1,5	10670	62	7	14973	489	23	86
HUNEDOARA	34890	2,0	9126	1166	98	23704	675	40	81
IALOMITA	15868	0,9	6026	266	11	9129	347	15	74
IASI	53379	3,1	14794	507	111	36757	1010	34	164
MARAMURES	43721	2,6	17435	1927	23	23582	592	37	124
MEHEDINTI	19175	1,1	6183	427	3	12132	329	19	82
MURES	43005	2,5	15859	37	34	26222	667	30	156
NEAMT	37552	2,2	13901	3293	30	19468	670	29	161
OLT	23999	1,4	9381	1611	1	12329	490	26	161
PRAHOVA	56671	3,3	17486	3122	14	34920	902	50	177
SALAJ	16629	1,0	6485	600	4	9122	292	19	107
SATU MARE	28946	1,7	9532	283	6	18546	472	19	88
SIBIU	33191	1,9	8218	777	48	23333	662	34	119
SUCEAVA	43552	2,5	20712	438	8	21577	585	30	202
TELEORMAN	19214	1,1	6636	272	399	11315	419	21	152
TIMIS	60188	3,5	9772	612	29	48337	1260	38	140
TULCEA	17655	1,0	6248	1363	114	9367	479	18	66
VASLUI	21634	1,3	10347	90	12	10647	413	16	109
VALCEA	28037	1,6	10958	364	6	16014	487	40	168
VRANCEA	21001	1,2	6349	356	10	13717	449	16	104
MUN. BUCURESTI	324629	19,0	21675	1037	303	294484	6876	115	138
ILFOV	28406	1,7	3546	49	31	24054	613	21	92

Table no. 6

Operations performed in the trade registers by counties and categories of registration in the month of January 2008

County	Total of operations carried on		out of which:					
			New incorporations		Changes in statutory documents		Strike off companies	
	No.	%	No.	%	No.	%	No.	%
0	1	2	3	4	5	6	9	10
Total ROMÂNIA	73528	100,0	9831	13,4	59858	81,4	3839	5,2
ALBA	1501	100,0	176	11,7	1181	78,7	144	9,6
ARAD	1333	100,0	228	17,1	988	74,1	117	8,8
ARGES	2146	100,0	286	13,3	1778	82,9	82	3,8
BACAU	1117	100,0	236	21,1	818	73,2	63	5,6
BIHOR	2035	100,0	279	13,7	1533	75,3	223	11,0
BISTRITA-NASAUD	609	100,0	131	21,5	431	70,8	47	7,7
BOTOSANI	504	100,0	132	26,2	308	61,1	64	12,7
BRASOV	1502	100,0	294	19,6	1111	74,0	97	6,5
BRAILA	899	100,0	137	15,2	693	77,1	69	7,7
BUZAU	958	100,0	201	21,0	689	71,9	68	7,1
CARAS-SEVERIN	635	100,0	108	17,0	504	79,4	23	3,6
CALARASI	496	100,0	79	15,9	391	78,8	26	5,2
CLUJ	2582	100,0	503	19,5	1926	74,6	153	5,9
CONSTANTA	3083	100,0	397	12,9	2606	84,5	80	2,6
COVASNA	427	100,0	68	15,9	317	74,2	42	9,8
DAMBOVITA	826	100,0	163	19,7	585	70,8	78	9,4
DOLJ	1514	100,0	207	13,7	1267	83,7	40	2,6
GALATI	1613	100,0	282	17,5	1272	78,9	59	3,7
GIURGIU	153	100,0	70	45,8	78	51,0	5	3,3
GORJ	728	100,0	124	17,0	529	72,7	75	10,3
HARGHITA	743	100,0	154	20,7	521	70,1	68	9,2
HUNEDOARA	962	100,0	225	23,4	682	70,9	55	5,7
IALOMITA	420	100,0	101	24,0	281	66,9	38	9,0
IASI	2428	100,0	405	16,7	1892	77,9	131	5,4
MARAMURES	1104	100,0	242	21,9	771	69,8	91	8,2
MEHEDINTI	358	100,0	101	28,2	235	65,6	22	6,1
MURES	16395	100,0	224	1,4	15646	95,4	525	3,2
NEAMT	882	100,0	243	27,6	572	64,9	67	7,6
OLT	588	100,0	148	25,2	380	64,6	60	10,2
PRAHOVA	1559	100,0	299	19,2	1110	71,2	150	9,6
SALAJ	613	100,0	111	18,1	439	71,6	63	10,3
SATU MARE	728	100,0	150	20,6	555	76,2	23	3,2
SIBIU	1903	100,0	223	11,7	1437	75,5	243	12,8
SUCEAVA	1088	100,0	300	27,6	694	63,8	94	8,6
TELEORMAN	418	100,0	127	30,4	260	62,2	31	7,4
TIMIS	1802	100,0	344	19,1	1306	72,5	152	8,4
TULCEA	413	100,0	75	18,2	300	72,6	38	9,2
VASLUI	388	100,0	132	34,0	226	58,2	30	7,7
VALCEA	844	100,0	164	19,4	547	64,8	133	15,8
VRANCEA	619	100,0	115	18,6	455	73,5	49	7,9
MUN. BUCURESTI	12794	100,0	1619	12,7	10992	85,9	183	1,4
ILFOV	1818	100,0	228	12,5	1552	85,4	38	2,1

*) by effect of implementation of Law no. 314/2001, art.1 and art. 6

Table no.7

Number of incorporations in the trade registers by counties and capital sources in the month of January 2008

County	Total		out of which:					Ranking by: *	
			Private capital			State majority capital			Mixed capital (state+private)
			out of which:			out of which:			
			PF+AF	Companies	OC	RA	Companies		Companies
No.	%	No.	No.	No.	No.	No.	No.		
0	1	2	3	4	5	6	7	8	9
Total ROMÂNIA	9831	100,0	2155	7671		1	3	1	X
ALBA	176	1,8	48	128					22
ARAD	228	2,3	61	167					15
ARGES	286	2,9	68	218					9
BACAU	236	2,4	49	187					14
BIHOR	279	2,8	57	221		1			11
BISTRITA-NASAUD	131	1,3	33	98					31
BOTOSANI	132	1,3	67	65					29
BRASOV	294	3,0	78	216					8
BRAILA	137	1,4	40	96			1		28
BUZAU	201	2,0	53	148					21
CARAS-SEVERIN	108	1,1	25	83					36
CALARASI	79	0,8	16	63					39
CLUJ	503	5,1	154	349					2
CONSTANTA	397	4,0	88	306			2	1	4
COVASNA	68	0,7	18	50					42
DAMBOVITA	163	1,7	40	123					24
DOLJ	207	2,1	52	155					20
GALATI	282	2,9	79	203					10
GIURGIU	70	0,7	21	49					41
GORJ	124	1,3	20	104					33
HARGHITA	154	1,6	57	97					25
HUNEDOARA	225	2,3	34	191					17
IALOMITA	101	1,0	43	58					37
IASI	405	4,1	105	300					3
MARAMURES	242	2,5	49	193					13
MEHEDINTI	101	1,0	29	72					38
MURES	224	2,3	54	170					18
NEAMT	243	2,5	60	183					12
OLT	148	1,5	39	109					27
PRAHOVA	299	3,0	68	231					7
SALAJ	111	1,1	34	77					35
SATU MARE	150	1,5	14	136					26
SIBIU	223	2,3	53	170					19
SUCEAVA	300	3,1	88	212					6
TELEORMAN	127	1,3	38	89					32
TIMIS	344	3,5	66	278					5
TULCEA	75	0,8	14	61					40
VASLUI	132	1,3	35	97					30
VALCEA	164	1,7	33	131					23
VRANCEA	115	1,2	13	102					34
MUN. BUCURESTI	1619	16,5	152	1467					1
ILFOV	228	2,3	10	218					16

*) The total number of incorporations (col 1)

*** Less than 0,01%

Table no.8

**Number of incorporations in the trade registers by counties and business categories
in the month of January 2008**

County	Total		out of which:						
			PF+AF	companies: 7675				RA	OC
	SNC	SCS		SRL	SA	No.	No.		
	No.	%	No.	No.	No.			No.	No.
0	1	2	3	4	5	6	7	8	9
Total ROMÂNIA	9831	100,0	2155		1	7635	39	1	
ALBA	176	1,8	48			127	1		
ARAD	228	2,3	61			167			
ARGES	286	2,9	68			216	2		
BACAU	236	2,4	49			186	1		
BIHOR	279	2,8	57			220	1	1	
BISTRITA-NASAUD	131	1,3	33			98			
BOTOSANI	132	1,3	67			65			
BRASOV	294	3,0	78			213	3		
BRAILA	137	1,4	40			97			
BUZAU	201	2,0	53			146	2		
CARAS-SEVERIN	108	1,1	25			83			
CALARASI	79	0,8	16			63			
CLUJ	503	5,1	154			347	2		
CONSTANTA	397	4,0	88			307	2		
COVASNA	68	0,7	18			50			
DAMBOVITA	163	1,7	40			123			
DOLJ	207	2,1	52			155			
GALATI	282	2,9	79			202	1		
GIURGIU	70	0,7	21			49			
GORJ	124	1,3	20			104			
HARGHITA	154	1,6	57		1	96			
HUNEDOARA	225	2,3	34			190	1		
IALOMITA	101	1,0	43			57	1		
IASI	405	4,1	105			300			
MARAMURES	242	2,5	49			193			
MEHEDINTI	101	1,0	29			72			
MURES	224	2,3	54			169	1		
NEAMT	243	2,5	60			183			
OLT	148	1,5	39			109			
PRAHOVA	299	3,0	68			230	1		
SALAJ	111	1,1	34			77			
SATU MARE	150	1,5	14			136			
SIBIU	223	2,3	53			167	3		
SUCEAVA	300	3,1	88			212			
TELEORMAN	127	1,3	38			85	4		
TIMIS	344	3,5	66			278			
TULCEA	75	0,8	14			60	1		
VASLUI	132	1,3	35			97			
VALCEA	164	1,7	33			131			
VRANCEA	115	1,2	13			102			
MUN. BUCURESTI	1619	16,5	152			1455	12		
ILFOV	228	2,3	10			218			

Table no. 9

Number of incorporations in the trade registers by domains of activity and business categories in the month of January 2008

CAEN segment	Field of activity	Total		out of which:							
				PF+AF	companies: 7675				RA	OC	
					SNC	SCS	SRL	SA			
					No.	No.	No.	No.			No.
0	1		2	3	4	5	6	7	8	9	10
	Total ROMÂNIA	9831	100,0	2155			1	7635	39	1	
1	Agriculture, hunting and related service activities	170	1,7	66				104			
2	Forestry and logging	66	0,7	7				58		1	
3	Fishing and aquaculture	102	1,0	95				7			
5	Mining of hard and brown coal	6	0,1	6							
6	Extraction of crude petroleum and natural gas	1	0,0					1			
7	Mining of metal ores										
8	Other mining and quarrying	20	0,2					20			
9	Mining support service activities	7	0,1	3				4			
10	Manufacture of food products	49	0,5	12				37			
11	Manufacture of beverages	4	0,0	1				3			
12	Manufacture of tobacco products										
13	Manufacture of textiles	18	0,2	5				13			
14	Manufacture of wearing apparel	62	0,6	14				48			
15	Tanning and dressing of leather; manufacture of luggage, handbags, saddlery, harness and footwear; dressing and dyeing of fur	21	0,2	5				15	1		
16	Manufacture of wood and of products of wood and cork, except furniture; manufacture of articles of straw and	49	0,5	17				32			
17	Manufacture of paper and paper products	9	0,1	1				8			
18	Printing and reproduction of recorded media	26	0,3	4				22			
19	Manufacture of coke and refined petroleum products										
20	Manufacture of chemicals and chemical products	12	0,1	5				7			
21	Manufacture of basic pharmaceutical products and pharmaceutical preparations	1	0,0					1			
22	Manufacture of rubber and plastic products	41	0,4	1				40			
23	Manufacture of other non-metallic mineral products	40	0,4	9				31			
24	Manufacture of basic metals	6	0,1					5	1		
25	Manufacture of fabricated metal products, except machinery and equipment	88	0,9	19				69			
26	Manufacture of computer, electronic and optical products	10	0,1	3				7			
27	Manufacture of electrical equipment	7	0,1					7			
28	Manufacture of machinery and equipment n.e.c.	15	0,2	7				7	1		
29	Manufacture of motor vehicles, trailers and semi-trailers	7	0,1					7			
30	Manufacture of other transport equipment	7	0,1					7			
31	Manufacture of furniture	43	0,4	7				36			
32	Other manufacturing	19	0,2	9				10			
33	Repair and installation of machinery and equipment	38	0,4	6				32			
35	Electricity, gas, steam and air conditioning supply	16	0,2					16			
36	Water collection, treatment and supply	18	0,2	5				8	5		
37	Sewerage	10	0,10					10			
38	Waste collection, treatment and disposal activities; materials recovery	29	0,29	1				28			
39	Remediation activities and other waste management services	1	0,01					1			
41	Construction of buildings	1073	10,91	25				1047	1		
42	Civil engineering	68	0,69	5				61	2		
43	Specialised construction activities	676	6,88	131				545			
45	Wholesale and retail trade and repair of motor vehicles and motorcycles	329	3,35	47				282			
46	Wholesale trade, except of motor vehicles and motorcycles	833	8,47	82				751			
47	Retail trade, except of motor vehicles and motorcycles	1494	15,20	385				1109			

Table no. 9

(continuance)

Number of incorporations in the trade registers by domains of activity and business categories in the month of January 2008

CAEN segment	Field of activity	Total		out of which:							
				PF+AF	companies: 7675				RA	OC	
		No.	%		No.	SNC	SCS	SRL			SA
						No.	No.	No.			No.
0	1	2	3	4	5	6	7	8	9	10	
	Total ROMÂNIA	9831	100,0	2155		1	7635	39	1		
51	Air transport	89	0,9	24			64	1			
52	Warehousing and support activities for transportation	134	1,4	60			74				
53	Postal and courier activities	28	0,3	20			8				
55	Accommodation	108	1,1	19			87	2			
56	Food and beverage service activities	246	2,5	15			231				
58	Publishing activities	30	0,3	6			24				
59	Motion picture, video and television programme production, sound recording and music publishing activities	29	0,3	8			21				
60	Programming and broadcasting activities	110	1,1	84			24	2			
61	Telecommunications	39	0,4				38	1			
62	Computer programming, consultancy and related activities	173	1,8	78			94	1			
63	Information service activities	48	0,5	14			34				
64	Financial service activities, except insurance and pension funding	27	0,3	4			16	7			
65	Insurance, reinsurance and pension funding, except compulsory social security	5	0,1	1			2	2			
66	Activities auxiliary to financial services and insurance activities	85	0,9	3			82				
68	Real estate activities	364	3,7	11			345	8			
69	Legal and accounting activities	98	1,0	6			92				
70	Activities of head offices; management	325	3,3	46		1	276	2			
71	Architectural and engineering activities; technical testing and analysis	220	2,2	48			172				
72	Scientific research and development	44	0,4	24			20				
73	Advertising and market research	107	1,1	6			100	1			
74	Other professional, scientific and technical activities	302	3,1	139			162	1			
75	Veterinary activities	17	0,2	2			15				
77	Rental and leasing activities	44	0,4	1			43				
78	Employment activities	43	0,4				43				
79	Travel agency, tour operator and other reservation service and related activities	36	0,4	2			34				
80	Security and investigation activities	29	0,3	10			19				
81	Services to buildings and landscape activities	78	0,8	10			68				
82	Office administrative, office support and other business support activities	174	1,8	117			57				
84	Public administration and defence; compulsory social security										
85	Education	108	1,1	66			42				
86	Human health activities	62	0,6	2			60				
87	Residential care activities	2	0,0				2				
88	Social work activities without accommodation	3	0,0	1			2				
90	Creative, arts and entertainment activities	48	0,5	24			24				
91	Libraries, archives, museums and other cultural activities	2	0,0				2				
92	Gambling and betting activities	25	0,3	6			19				
93	Sports activities and amusement and recreation activities	57	0,6	18			39				
94	Activities of membership organisations	1	0,0	1							

Table no. 10

Number of incorporated trading companies and the value of the subscribed share capital, by counties, in the month of January 2008

County	Total registered companies		Subscribed capital		Average subscribed capital on company
	No.	%	thousand Lei	%	thousand Lei
0	1	2	3	4	5
Total ROMÂNIA	7675	100,0	145579,2	100,0	19,0
ALBA	128	1,7	870,2	0,6	6,8
ARAD	167	2,2	93,5	0,1	0,6
ARGES	218	2,8	981,1	0,7	4,5
BACAU	187	2,4	344,2	0,2	1,8
BIHOR	221	2,9	103,2	0,1	0,5
BISTRITA-NASAUD	98	1,3	585,1	0,4	6,0
BOTOSANI	65	0,8	72,5	0,0	1,1
BRASOV	216	2,8	1088,2	0,7	5,1
BRAILA	97	1,3	151,9	0,1	1,6
BUZAU	148	1,9	455,1	0,3	3,1
CARAS-SEVERIN	83	1,1	45,6	0,0	0,5
CALARASI	63	0,8	23,7	0,0	0,4
CLUJ	349	4,5	1499,4	1,0	4,3
CONSTANTA	309	4,0	14987,2	10,3	48,7
COVASNA	50	0,7	30,9	0,0	0,6
DAMBOVITA	123	1,6	46,5	0,0	0,4
DOLJ	155	2,0	480,2	0,3	3,1
GALATI	203	2,6	75,4	0,1	0,4
GIURGIU	49	0,6	55,9	0,0	1,1
GORJ	104	1,4	45,6	0,0	0,4
HARGHITA	97	1,3	185,3	0,1	1,9
HUNEDOARA	191	2,5	725,5	0,5	3,8
IALOMITA	58	0,8	22,8	0,0	0,4
IASI	300	3,9	281,5	0,2	0,9
MARAMURES	193	2,5	103,9	0,1	0,5
MEHEDINTI	72	0,9	14490,7	10,0	201,3
MURES	170	2,2	406,3	0,3	2,4
NEAMT	183	2,4	374,8	0,3	2,0
OLT	109	1,4	69,7	0,0	0,6
PRAHOVA	231	3,0	4302,9	3,0	18,6
SALAJ	77	1,0	31,6	0,0	0,4
SATU MARE	136	1,8	552,5	0,4	4,1
SIBIU	170	2,2	5333,4	3,7	31,4
SUCEAVA	212	2,8	480,1	0,3	2,3
TELEORMAN	89	1,2	24,0	0,0	0,3
TIMIS	278	3,6	1978,3	1,4	7,1
TULCEA	61	0,8	16,1	0,0	0,3
VASLUI	97	1,3	32,3	0,0	0,3
VALCEA	131	1,7	102,7	0,1	0,8
VRANCEA	102	1,3	70,8	0,0	0,7
MUN. BUCURESTI	1467	19,1	76595,9	52,6	52,3
ILFOV	218	2,8	17362,7	11,9	79,6

Note: The average does not include filials because according to the Law no.31/1990 they are not juridical persons

*** Less than 0,01%

Table no. 11

Number of incorporated trading companies and the value of the subscribed share capital by legal forms, in the month of January 2008

Company type	Total registered companies		Subscribed capital		Average subscribed capital on company
	No.	%	thousand Lei	%	thousand Lei
0	1	2	3	4	5
Total ROMÂNIA	7675	100,0	145579,2	100,0	19,0
SNC					
SCS	1	0,0			
SA	39	0,5	30553,4	21,0	1273,1
SRL	7635	99,5	115025,8	79,0	15,1
SCA					

Note: The average does not include filials because according to the Law no.31/1990 they are not juridical persons

*** Less than 0,01%

Diagram no.5

