



MINISTRY OF JUSTICE

THE NATIONAL TRADE REGISTER OFFICE

București, Bd. Unirii nr. 74, Bl. J3b, tronson II+III, sector 3; Telefon: +40 21 316.08.04, 316.08.10; Fax: +40 21 316.08.03; Cod poștal: 030837
Website: www.onrc.ro; E-mail: onrc@onrc.ro; Cod identificare Fiscală: 14942091

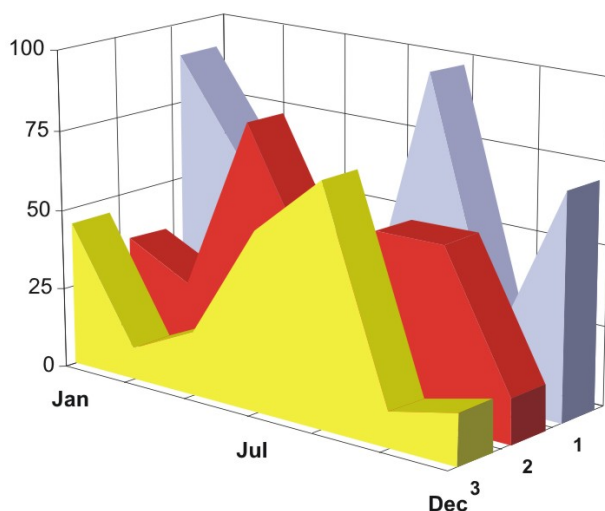
PROCEEDINGS IN THE CENTRAL TRADE REGISTER

STATISTICAL SYNTHESIS

OF

RECORDS IN THE CENTRAL TRADE REGISTER

- the 31th of December 2007 - provisional data -



- ISSUE No. 193 -

**MINISTRY OF JUSTICE
THE NATIONAL TRADE REGISTER OFFICE**

- Operations such as incorporation of trading companies, submission of changes, and strike-off are carried out based on Law No.26/1990, as republished, Law No.31/1990, as republished and on the Methodological Norms no. P/608/1998.

- This work reflects the evolution of the operations with the Trade Register Office attached to Bucharest Law Court and the Trade Register Offices attached to County Law Courts.

- The data contained in the Central Trade Register refer to operations for which law sets out the obligation of being registered in the trade registers kept by the 42 trade register offices attached to law courts.

• The content of this publication shall not be reproduced, partly or entirely, in original or modified form, and shall not be stored in a recovery system and shall not be transmitted in any form or by any means without prior written authorization of the Ministry of Justice – The National Trade Register Office.

• The content of this publication may be used in articles, studies, books, as supporting or explanatory data only by clearly and accurately indicating the source.

CONTENTS

Page

1	Definitions	1
2.1	Data related to December 1990 –December 2007	3
Table no.1 – Operations performed in the trade registers by categories of registration during December 1990 –December 2007, total by country and by counties, share of counties in the total by country		3
Table no.2 – Operations performed in the trade registers during December 1990 –December 2007, total by country and counties, share of categories of operations in the total of each county		4
Table no. 3 – Number and structure of incorporations in the trade registers during December 1990-December 2007		5
Table no. 4 – Number of incorporations in the trade registers by counties and capital sources during December 1990 - December 2007		6
Table no. 5 – Number of incorporations in the trade registers by counties and business categories during December 1990 –December 2007		7
Table no. 6 – Number of incorporations in the trade registers by domains of activity and business categories during December 1990 -December 2007		8
2.2	Data related to December 2007	10
Table no. 7 – Operations performed in the trade registers by counties and categories of registration in the month of December 2007		10
Table no. 8 – Number of incorporations in the trade registers by counties and capital sources in the month of December 2007		11
Table no. 9 – Number of incorporations in the trade registers by counties and business categories in the month of December 2007		12
Table no. 10 –Number of incorporations in the trade registers by domains of activity and business categories in the month of December 2007		13
Table no. 11 – Number of incorporated trading companies and the value of the subscribed share capital, by counties, in the month of December 2007		15
Table no. 12– Number of incorporated trading companies and the value of the subscribed share capital by legal forms, in the month of December 2007		16
Chart no. 5 – Average value of the subscribed share capital by types of trading companies in the month of December 2007		16

Definitions

The Trade Register Office was established based on Law No. 26/1990, as republished and subsequently amended and supplemented, operates as an active institution as of December 1990 and is twofold structured:

- at national level, represented by the National Trade Register Office organized under the authority of the Ministry of Justice
- at local level, represented by the 42 Trade Register Offices attached to Law Courts, organized under the subordination of the National Trade Register Office

The business categories subject to registration in the trade register are:

- natural persons and family associations usually carrying on trading activities, trading companies, national companies, autonomous administrations, and co-operative organizations
- branches registered as trading companies with legal personality, having the setting-up, operation and incorporation legal regime of the type of legal form.

• Terms used in tables and charts

➤ **Number of companies:** depending on the table, the number of companies incorporated during the reference period, the number of companies struck-off from the trade register.

➤ **Value of subscribed share capital:**

- **total, in national currency:** the share capital value resulted by adding up the subscribed values (in cash and in kind) in national currency (lei)

➤ **Regions of economic development:**

North-East: Suceava, Botoșani, Neamț, Iași, Bacău, Vaslui.

South-East: Vrancea, Galați, Buzău, Brăila, Tulcea, Constanța.

South-Muntenia: Argeș, Dâmbovița, Prahova, Teleorman, Giurgiu, Călărași, Ialomița.

South-West Oltenia: Gorj, Vâlcea, Dolj, Mehedinți, Olt.

West: Arad, Caraș-Severin, Hunedoara, Timiș.

North-West: Bihor, Bistrița, Cluj, Satu Mare, Sălaj, Maramureș.

Center: Alba, Brașov, Covasna, Harghita, Mureș, Sibiu.

Bucharest-Ilfov: București, Ilfov.

NACE Code – The Classification of Economic Activities in the European Community was approved by GO No. 656/1997, amended by Order No 601/2002 and by Order no. 337/2007 of the President of the National Institute of Statistics, and complies with the international classification used in statistic reports and official documents. Activities are ranked by the harmonization principle by sections, divisions, groups and classes.

Abbreviations

- **PF** - Authorized Natural Person
- **AF** - Family Association
- **SNC** - General Partnership
- **SCS** - Limited Partnership
- **SA** - Joint-Stock Company
- **SRL** - Limited Liability Company
- **RA** - Autonomous Administration
- **OC** - Co-operative Organization

Sources of Information:

The integrated IT system of the trade register is designed by The National Trade Register Office in compliance with the provisions of the related legislation in force. The source of information consists of the trade registers organized in a computerized system, kept by the trade register offices attached to law courts.

Table no. 1

**Operations performed in the trade registers by categories of registration during
December 1990 –December 2007, total by country and by counties, share of counties in
the total by country**

Counties	Total of registered operations		out of which :							
			Registered companies		Changes in statutory documents		out of which : of liquidation, dissolution		Strike off companies	
	No.	%	No.	%	No.	%	No.	%	No.	%
0	1	2	3	4	5	6	7	8	11	12
Total ROMÂNIA	9081160	100,0	1700635	100,0	6867287	100,0	9911	100,0	513238	100,0
ALBA	117397	1,3	26735	1,6	85794	1,2	371	3,7	4868	0,9
ARAD	205730	2,3	41726	2,5	153532	2,2	369	3,7	10472	2,0
ARGES	218908	2,4	43755	2,6	166002	2,4	197	2,0	9151	1,8
BACAU	208861	2,3	42477	2,5	154464	2,2	1003	10,1	11920	2,3
BIHOR	263696	2,9	51743	3,0	197330	2,9	303	3,1	14623	2,8
BISTRITA-NASAUD	109713	1,2	20753	1,2	82543	1,2	72	0,7	6417	1,3
BOTOSANI	83329	0,9	20907	1,2	56682	0,8	66	0,7	5740	1,1
BRASOV	302478	3,3	53222	3,1	237693	3,5	149	1,5	11563	2,3
BRAILA	119927	1,3	23250	1,4	92883	1,4	61	0,6	3794	0,7
BUZAU	164342	1,8	31116	1,8	122631	1,8	146	1,5	10595	2,1
CARAS-SEVERIN	113340	1,2	21045	1,2	84068	1,2	41	0,4	8227	1,6
CALARASI	75537	0,8	16939	1,0	53744	0,8	79	0,8	4854	0,9
CLUJ	404068	4,4	78768	4,6	311719	4,5	197	2,0	13581	2,6
CONSTANTA	398419	4,4	71127	4,2	301145	4,4	926	9,3	26147	5,1
COVASNA	80773	0,9	14522	0,9	61802	0,9	18	0,2	4449	0,9
DAMBOVITA	135529	1,5	31604	1,9	90417	1,3	98	1,0	13508	2,6
DOLJ	249656	2,7	44753	2,6	192010	2,8	215	2,2	12893	2,5
GALATI	246068	2,7	40253	2,4	191803	2,8	125	1,3	14012	2,7
GIURGIU	66464	0,7	13808	0,8	47446	0,7	47	0,5	5210	1,0
GORJ	130747	1,4	20210	1,2	104205	1,5	48	0,5	6332	1,2
HARGHITA	132371	1,5	26156	1,5	101539	1,5	51	0,5	4676	0,9
HUNEDOARA	179109	2,0	34665	2,0	130731	1,9	126	1,3	13713	2,7
IALOMITA	84755	0,9	15767	0,9	63122	0,9	78	0,8	5866	1,1
IASI	304915	3,4	52974	3,1	240026	3,5	597	6,0	11915	2,3
MARAMURES	187209	2,1	43479	2,6	132860	1,9	159	1,6	10870	2,1
MEHEDINTI	94062	1,0	19074	1,1	67022	1,0	55	0,6	7966	1,6
MURES	252836	2,8	42781	2,5	196697	2,9	83	0,8	13358	2,6
NEAMT	191552	2,1	37309	2,2	139874	2,0	304	3,1	14369	2,8
OLT	114307	1,3	23851	1,4	81447	1,2	21	0,2	9009	1,8
PRAHOVA	313890	3,5	56372	3,3	242135	3,5	274	2,8	15383	3,0
SALAJ	77084	0,8	16518	1,0	55697	0,8	29	0,3	4869	0,9
SATU MARE	145768	1,6	28796	1,7	106631	1,6	26	0,3	10341	2,0
SIBIU	196585	2,2	32968	1,9	155831	2,3	31	0,3	7786	1,5
SUCEAVA	229532	2,5	43252	2,5	169659	2,5	29	0,3	16621	3,2
TELEORMAN	100974	1,1	19087	1,1	77151	1,1	49	0,5	4736	0,9
TIMIS	325041	3,6	59844	3,5	248657	3,6	271	2,7	16540	3,2
TULCEA	93521	1,0	17580	1,0	70775	1,0	149	1,5	5166	1,0
VASLUI	103831	1,1	21502	1,3	73848	1,1	197	2,0	8481	1,7
VALCEA	139747	1,5	27873	1,6	103483	1,5	138	1,4	8391	1,6
VRANCEA	113000	1,2	20886	1,2	87543	1,3	51	0,5	4571	0,9
MUN. BUCURESTI	1875801	20,7	323010	19,0	1439023	21,0	2641	26,6	113768	22,2
ILFOV	130288	1,4	28178	1,7	95623	1,4	21	0,2	6487	1,3

Table no. 2

**Operations performed in the trade registers during December 1990 –December 2007,
total by country and counties, share of categories of operations in the total of each
county**

Counties	Total registered operations of		out of which :							
			Registered companies		Changes in statutory documents		out of which : of liquidation, dissolution		Strike off companies	
	No.	%	No.	%	No.	%	No.	%	No.	%
0	1	2	3	4	5	6	7	8	11	12
Total ROMÂNIA	9081160	100,0	1700635	18,7	6867287	75,6	9911	0,1	513238	5,7
ALBA	117397	100,0	26735	22,8	85794	73,1	371	0,3	4868	4,1
ARAD	205730	100,0	41726	20,3	153532	74,6	369	0,2	10472	5,1
ARGES	218908	100,0	43755	20,0	166002	75,8	197	0,1	9151	4,2
BACAU	208861	100,0	42477	20,3	154464	74,0	1003	0,5	11920	5,7
BIHOR	263696	100,0	51743	19,6	197330	74,8	303	0,1	14623	5,5
BISTRITA-NASAUD	109713	100,0	20753	18,9	82543	75,2	72	0,1	6417	5,8
BOTOSANI	83329	100,0	20907	25,1	56682	68,0	66	0,1	5740	6,9
BRASOV	302478	100,0	53222	17,6	237693	78,6	149	0,0	11563	3,8
BRAILA	119927	100,0	23250	19,4	92883	77,4	61	0,1	3794	3,2
BUZAU	164342	100,0	31116	18,9	122631	74,6	146	0,1	10595	6,4
CARAS-SEVERIN	113340	100,0	21045	18,6	84068	74,2	41	0,0	8227	7,3
CALARASI	75537	100,0	16939	22,4	53744	71,1	79	0,1	4854	6,4
CLUJ	404068	100,0	78768	19,5	311719	77,1	197	0,0	13581	3,4
CONSTANTA	398419	100,0	71127	17,9	301145	75,6	926	0,2	26147	6,6
COVASNA	80773	100,0	14522	18,0	61802	76,5	18	0,0	4449	5,5
DAMBOVITA	135529	100,0	31604	23,3	90417	66,7	98	0,1	13508	10,0
DOLJ	249656	100,0	44753	17,9	192010	76,9	215	0,1	12893	5,2
GALATI	246068	100,0	40253	16,4	191803	77,9	125	0,1	14012	5,7
GIURGIU	66464	100,0	13808	20,8	47446	71,4	47	0,1	5210	7,8
GORJ	130747	100,0	20210	15,5	104205	79,7	48	0,0	6332	4,8
HARGHITA	132371	100,0	26156	19,8	101539	76,7	51	0,0	4676	3,5
HUNEDOARA	179109	100,0	34665	19,4	130731	73,0	126	0,1	13713	7,7
IALOMITA	84755	100,0	15767	18,6	63122	74,5	78	0,1	5866	6,9
IASI	304915	100,0	52974	17,4	240026	78,7	597	0,2	11915	3,9
MARAMURES	187209	100,0	43479	23,2	132860	71,0	159	0,1	10870	5,8
MEHEDINTI	94062	100,0	19074	20,3	67022	71,3	55	0,1	7966	8,5
MURES	252836	100,0	42781	16,9	196697	77,8	83	0,0	13358	5,3
NEAMT	191552	100,0	37309	19,5	139874	73,0	304	0,2	14369	7,5
OLT	114307	100,0	23851	20,9	81447	71,3	21	0,0	9009	7,9
PRAHOVA	313890	100,0	56372	18,0	242135	77,1	274	0,1	15383	4,9
SALAJ	77084	100,0	16518	21,4	55697	72,3	29	0,0	4869	6,3
SATU MARE	145768	100,0	28796	19,8	106631	73,2	26	0,0	10341	7,1
SIBIU	196585	100,0	32968	16,8	155831	79,3	31	0,0	7786	4,0
SUCEAVA	229532	100,0	43252	18,8	169659	73,9	29	0,0	16621	7,2
TELEORMAN	100974	100,0	19087	18,9	77151	76,4	49	0,0	4736	4,7
TIMIS	325041	100,0	59844	18,4	248657	76,5	271	0,1	16540	5,1
TULCEA	93521	100,0	17580	18,8	70775	75,7	149	0,2	5166	5,5
VASLUI	103831	100,0	21502	20,7	73848	71,1	197	0,2	8481	8,2
VALCEA	139747	100,0	27873	19,9	103483	74,1	138	0,1	8391	6,0
VRANCEA	113000	100,0	20886	18,5	87543	77,5	51	0,0	4571	4,0
MUN. BUCURESTI	1875801	100,0	323010	17,2	1439023	76,7	2641	0,1	113768	6,1
ILFOV	130288	100,0	28178	21,6	95623	73,4	21	0,0	6487	5,0

Table no.3

Number and structure of incorporations in the trade registers during December 1990-
December 2007

Period (year, month)	Registered companies	Percentage	
	No.	%	%
0	1	2	3
Total, 30 September 2007, out of which	1700635	91,49	
Year 1990	81	0,00	
Year 1991	95840	5,64	
Year 1992	137456	8,08	
Year 1993	117078	6,88	
Year 1994	137445	8,08	
Year 1995	65479	3,85	
Year 1996	62089	3,65	
Year 1997	55663	3,27	
Year 1998	63878	3,76	
Year 1999	57197	3,36	
Year 2000	57291	3,37	
Year 2001	61265	3,60	
Year 2002	84780	4,99	
Year 2003	123582	7,27	
Year 2004	144284	8,48	
Year 2005	157375	9,25	
Year 2006	135211	7,95	
Year 2007 (I - XII) out of which :	144641		100,0
January	10979		7,6
February	13249		9,2
March	14721		10,2
April	10908		7,5
May	12749		8,8
June	12463		8,6
July	11670		8,1
August	11841		8,2
September	10950		7,57
October	13345		9,23
November	12369		8,55
December	9397		6,50

Diagram no.1

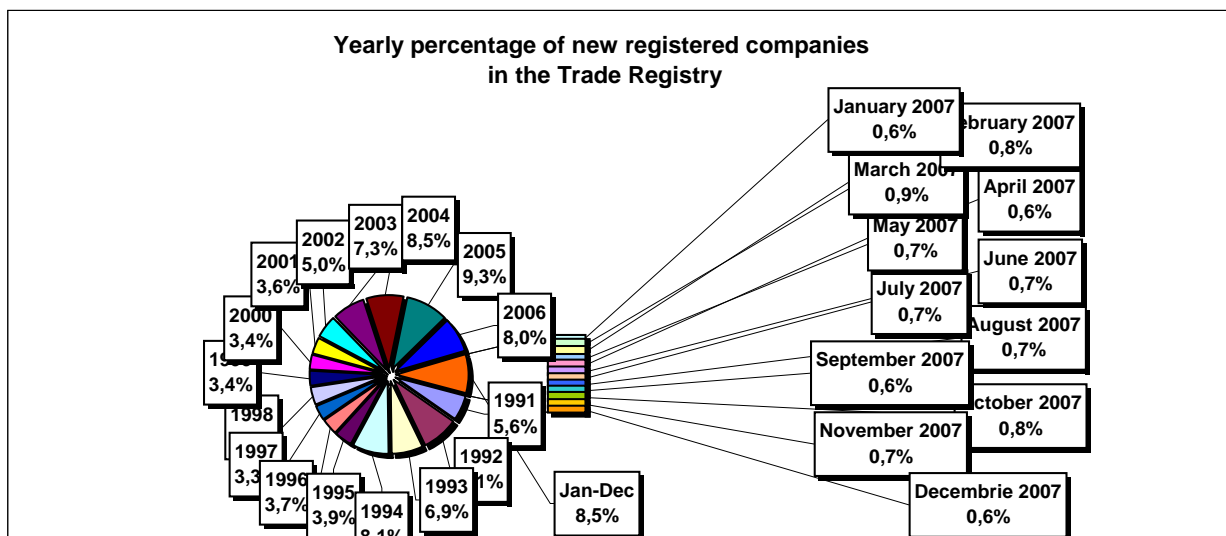


Table no. 4

**Number of incorporations in the trade registers by counties and capital sources during
December 1990 - December 2007**

Counties	Total		out of which:					Ranking by: *	
			Private capital			State majority capital			Mixed capital (state+private)
			out of which:			out of which:			
			PF+AF	Companies	OC	RA	Companies		Companies
No.	%	No.	No.	No.	No.	No.	No.		
0	1	2	3	4	5	6	7	8	9
Total ROMÂNIA	1700635	100,0	439993	1242933	5397	1348	2370	8594	X
ALBA	26735	1,6	9239	17100	141	38	47	170	25
ARAD	41727	2,5	15816	25351	157	27	41	335	15
ARGES	43755	2,6	14035	29342	168	29	29	152	10
BACAU	42477	2,5	14047	27972	158	35	42	223	14
BIHOR	51743	3,0	12354	38836	146	37	62	308	8
BISTRITA-NASAUD	20753	1,2	7331	13167	98	19	29	109	33
BOTOSANI	20907	1,2	9676	10796	122	21	173	119	31
BRASOV	53222	3,1	11246	41560	114	45	87	170	6
BRAILA	23250	1,4	5850	17066	96	28	44	166	28
BUZAU	31116	1,8	9158	21615	142	28	42	131	21
CARAS-SEVERIN	21045	1,2	7299	13407	102	35	65	137	30
CALARASI	16939	1,0	4959	11704	86	18	77	95	38
CLUJ	78768	4,6	20073	58191	150	52	40	262	2
CONSTANTA	71127	4,2	13737	56545	203	51	49	542	3
COVASNA	14522	0,9	5034	9255	68	24	32	109	41
DAMBOVITA	31604	1,9	14267	16946	134	29	75	153	20
DOLJ	44753	2,6	9180	35111	162	40	57	203	9
GALATI	40253	2,4	8264	31630	135	30	51	143	16
GIURGIU	13808	0,8	3306	10181	80	22	109	110	42
GORJ	20210	1,2	4871	14922	184	50	83	100	34
HARGHITA	26156	1,5	10613	15162	86	23	43	229	26
HUNEDOARA	34665	2,0	9092	25078	81	40	92	282	18
IALOMITA	15767	0,9	5983	9558	74	15	46	91	40
IASI	52974	3,1	14689	37673	164	34	70	344	7
MARAMURES	43479	2,6	17386	25770	124	37	39	123	11
MEHEDINTI	19074	1,1	6154	12694	82	19	27	98	36
MURES	42781	2,5	15805	26588	156	30	34	168	13
NEAMT	37309	2,2	13841	23083	161	29	30	165	17
OLT	23851	1,4	9342	14135	161	26	64	123	27
PRAHOVA	56372	3,3	17418	38384	177	50	72	271	5
SALAJ	16518	1,0	6451	9850	107	19	28	63	39
SATU MARE	28796	1,7	9518	18995	88	19	42	134	22
SIBIU	32968	1,9	8165	24384	119	34	108	158	19
SUCEAVA	43252	2,5	20624	22112	202	30	64	220	12
TELEORMAN	19087	1,1	6598	12089	152	21	45	182	35
TIMIS	59844	3,5	9706	49543	140	38	69	348	4
TULCEA	17580	1,0	6234	11008	66	18	42	212	37
VASLUI	21502	1,3	10312	10889	109	16	41	135	29
VALCEA	27873	1,6	10925	16590	168	40	37	113	24
VRANCEA	20886	1,2	6336	14289	104	16	27	114	32
MUN. BUCURESTI	323009	19,0	21523	300012	138	115	103	1118	1
ILFOV	28178	1,7	3536	24350	92	21	13	166	23

*) The total number of incorporations (col 1)

Table no. 5

**Number of incorporations in the trade registers by counties and business categories during
December 1990 –December 2007**

County	Total		out of which:						
			PF+AF	companies:				RA	OC
	1253897								
	No.	%	No.	SNC	SCS	SRL	SA	No.	No.
0	1	2	3	4	5	6	7	8	9
Total ROMÂNIA	1700635	100,0	439993	32665	1577	1187065	32584	1348	5397
ALBA	26735	1,6	9239	890	11	15858	558	38	141
ARAD	41726	2,5	15816	53	11	24982	679	27	157
ARGES	43755	2,6	14035	107	15	28575	826	29	168
BACAU	42477	2,5	14047	1299	4	26204	729	35	158
BIHOR	51743	3,0	12354	126	47	38129	904	37	146
BISTRITA-NASAUD	20753	1,2	7331	146	21	12721	417	19	98
BOTOSANI	20907	1,2	9676	468	1	10166	453	21	122
BRASOV	53222	3,1	11246	239	20	40703	855	45	114
BRAILA	23250	1,4	5850	376	12	16369	519	28	96
BUZAU	31116	1,8	9158	3747	46	17420	575	28	142
CARAS-SEVERIN	21045	1,2	7299	117	9	13017	466	35	102
CALARASI	16939	1,0	4959	609	3	10910	354	18	86
CLUJ	78768	4,6	20073	2112	18	55077	1286	52	150
CONSTANTA	71127	4,2	13737	311	23	55320	1482	51	203
COVASNA	14522	0,9	5034	148	4	8946	298	24	68
DAMBOVITA	31604	1,9	14267	60	8	16616	490	29	134
DOLJ	44753	2,6	9180	1560	8	32919	884	40	162
GALATI	40253	2,4	8264	1574	6	29402	842	30	135
GIURGIU	13808	0,8	3306	35	8	10033	324	22	80
GORJ	20210	1,2	4871	29	1	14586	489	50	184
HARGHITA	26156	1,5	10613	62	6	14877	489	23	86
HUNEDOARA	34665	2,0	9092	1166	98	23514	674	40	81
IALOMITA	15767	0,9	5983	266	11	9072	346	15	74
IASI	52974	3,1	14689	507	111	36457	1010	34	164
MARAMURES	43479	2,6	17386	1927	23	23389	592	37	124
MEHEDINTI	19074	1,1	6154	427	3	12060	329	19	82
MURES	42781	2,5	15805	37	34	26053	666	30	156
NEAMT	37309	2,2	13841	3293	30	19285	670	29	161
OLT	23851	1,4	9342	1611	1	12220	490	26	161
PRAHOVA	56372	3,3	17418	3122	14	34690	901	50	177
SALAJ	16518	1,0	6451	600	4	9045	292	19	107
SATU MARE	28796	1,7	9518	283	6	18410	472	19	88
SIBIU	32968	1,9	8165	777	48	23166	659	34	119
SUCEAVA	43252	2,5	20624	438	8	21365	585	30	202
TELEORMAN	19087	1,1	6598	272	399	11230	415	21	152
TIMIS	59844	3,5	9706	612	29	48059	1260	38	140
TULCEA	17580	1,0	6234	1363	114	9307	478	18	66
VASLUI	21502	1,3	10312	90	12	10550	413	16	109
VALCEA	27873	1,6	10925	364	6	15883	487	40	168
VRANCEA	20886	1,2	6336	356	10	13615	449	16	104
MUN. BUCURESTI	323010	19,0	21523	1037	303	293029	6864	115	138
ILFOV	28178	1,7	3536	49	31	23836	613	21	92

Table no. 6

**Number of incorporations in the trade registers by domains of activity and business categories
during December 1990 -December 2007**

CAEN segment	Field of activity	Total		out of which:						
				PF+AF	companies: 1253897				RA	OC
		No.	%		No.	SNC	SCS	SRL		
				No.		No.	No.	No.	No.	No.
0	1	2	3	4	5	6	7	8	9	10
	Total ROMANIA	1700635	100,0	439993	32665	1577	1187065	32584	1348	5397
1	Agriculture, hunting and related service activities	66964	3,9	17588	2024	45	43344	3793	53	117
2	Forestry, logging and related service activities	8988	0,5	1190	152	3	7316	223	96	8
5	Fishing, fish farming and related service activities	4134	0,2	2688	17	3	1372	54		
10	Mining of coal and lignite; extraction of peat	126	0,0	2			88	32	4	
11	Extraction of crude petroleum and natural gas; service activities incidental to oil and gas extraction, excluding surveying	372	0,0	26	1		174	125	46	
12	Mining of uranium and thorium ores	133	0,0	32			95	6		
13	Mining of metal ores	540	0,0	163			314	55	8	
14	Other mining and quarrying	1826	0,1	110	9	1	1532	171	2	1
15	Manufacture of food products and beverages	74617	4,4	15000	3260	149	54091	1864	5	248
16	Manufacture of tobacco products	293	0,0	47			214	31	1	
17	Manufacture of textiles	12008	0,7	2452	556	16	8433	406		145
18	Manufacture of wearing apparel; dressing and dyeing of fur	21678	1,3	4984	875	38	15116	359	1	305
19	Tanning and dressing of leather; manufacture of luggage, handbags, saddlery, harness and footwear	5514	0,3	942	112	6	4279	123	1	51
20	Manufacture of wood and of products of wood and cork, except furniture; manufacture of articles of straw and plaiting materials	26226	1,5	9372	575	29	15700	499	9	42
21	Manufacture of pulp, paper and paper products	1876	0,1	129	21	1	1614	98		13
22	Publishing, printing and reproduction of recorded media	12498	0,7	1009	317	22	10717	409	14	10
23	Manufacture of coke, refined petroleum products and nuclear fuel	270	0,0	25			208	35	2	
24	Manufacture of chemicals and chemical products	3827	0,2	121	89	1	3223	381	6	6
25	Manufacture of rubber and plastic products	6671	0,4	592	314	7	5470	263		24
26	Manufacture of other non-metallic mineral products	9950	0,6	3054	212	6	6267	392	5	14
27	Manufacture of basic metals	2496	0,1	175	39	3	2060	209	3	7
28	Manufacture of fabricated metal products, except machinery and equipment	18708	1,1	4714	361	23	12811	726	11	62
29	Manufacture of machinery and equipment n.e.c.	3969	0,2	115	44	7	3356	423	19	5
30	Manufacture of office machinery and computers	1804	0,1	16	25	4	1679	80		
31	Manufacture of electrical machinery and apparatus n.e.c.	2026	0,1	112	44	6	1714	144		6
32	Manufacture of radio, television and communication equipment and apparatus	907	0,1	68	14	4	747	73		1
33	Manufacture of medical, precision and optical instruments, watches and clocks	2809	0,2	673	17	2	2007	106		4
34	Manufacture of motor vehicles, trailers and semi-trailers	962	0,1	31	31	3	768	127		2
35	Manufacture of other transport equipment	2080	0,1	302	86	7	1485	125	73	2
36	Manufacture of furniture; manufacturing n.e.c.	16557	1,0	4723	284	16	11033	338	5	158
37	Recycling	5311	0,3	453	51	5	4626	175		1
40	Electricity, gas, steam and hot water supply	3211	0,2	840	3	1	1727	551	89	
41	Collection, purification and distribution of water	3604	0,2	1637	2		1668	224	73	
45	Construction	115189	6,8	29392	611	44	82542	2469	54	77

*)Field of activity declared when registered, according to CAEN classification

Table no. 6
(continuing)

**Number of incorporations in the trade registers by domains of activity and business categories during
December 1990 -December 2007**

CAEN segment	Field of activity	Total		out of which:						
				PF+AF	companies: 1253897				RA	OC
		SNC	SCS		SRL	SA	No.	No.		
		No.	%	No.	No.	No.			No.	No.
0	1	2	3	4	5	6	7	8	9	10
	Total ROMÂNIA	1700635	100,0	439993	32665	1577	1187065	32584	1348	5397
50	Sale, maintenance and repair of motor vehicles and motorcycles; retail sale of automotive fuel	57625	3,4	9170	1244		46102	1027	6	42
51	Wholesale trade and commission trade, except of motor vehicles and motorcycles	215515	12,7	20146	4525	152	187049	3326	35	282
52	Retail trade, except of motor vehicles and motorcycles; repair of personal and household goods	523742	30,8	186507	11916	559	319867	2501	6	2385
55	Hotels and restaurants	65372	3,8	15274	1636	126	47374	794	73	95
60	Land transport; transport via pipelines	90820	5,3	39046	845	37	49786	1063	33	10
61	Water transport	907	0,1	176	82	8	506	64	70	1
62	Air transport	318	0,0	18			240	50	10	
63	Supporting and auxiliary transport activities; activities of travel agencies	11418	0,7	809	220	14	9825	443	96	11
64	Post and telecommunications	8361	0,5	1064	11	1	6961	310	11	3
65	Financial intermediation, except insurance and pension funding	7015	0,4	154	15		3157	2654	2	1033
66	Insurance and pension funding, except compulsory social security	2102	0,1	623	1		519	958		1
67	Activities auxiliary to financial intermediation	8187	0,5	1383	7	2	6490	297		8
70	Real estate activities	31026	1,8	843	33	10	29404	712	17	7
71	Renting of machinery and equipment without operator and of personal and household goods	4120	0,2	747	116	8	3077	101	70	1
72	Computer and related activities	27778	1,6	6706	120	13	20546	388	2	3
73	Research and development	1866	0,1	265	11	2	1370	173	43	2
74	Other business activities	128949	7,6	27869	797	78	98326	1712	106	60
75	Public administration and defence; compulsory social security	372	0,0	96	5		222	26	22	1
80	Education	8458	0,5	4470	62	6	3854	66		
85	Health and social work	17444	1,0	2187	233	16	14919	85	3	1
90	Sewage and refuse disposal, sanitation and similar activities	1092	0,1	113	13	2	832	112	18	
91	Activities of membership organizations n.e.c.	220	0,0	97	1		104	15		3
92	Recreational, cultural and sporting activities	19064	1,1	5385	202	14	13076	306	69	12
93	Other service activities	29574	1,7	13286	418	42	15318	307	76	126
95	Activities of households as employers of domestic staff	1056	0,1	715	6	1	330	3		1
96	Extra-territorial organizations and bodies	11	0,0	11						

*)Field of activity declared when registered, according to CAEN classification

Table no. 7

**Operations performed in the trade registers by counties and categories of registration
in the month of December 2007**

County	Total of operations carried on		out of which:							
			New incorporations		Changes in statutory documents		out of which: of liquidation, dissolution		Strike off companies	
	No.	%	No.	%	No.	%	No.	%	No.	%
0	1	2	3	4	5	6	7	8	9	10
Total ROMÂNIA	88222	100,0	9397	10,7	75501	85,6	46909	53,2	3324	3,8
ALBA	544	100,0	144	26,5	373	68,6	568	104,4	27	5,0
ARAD	1741	100,0	189	10,9	1419	81,5	1434	82,4	133	7,6
ARGES	1479	100,0	233	15,8	1173	79,3	1266	85,6	73	4,9
BACAU	1095	100,0	194	17,7	838	76,5	510	46,6	63	5,8
BIHOR	3358	100,0	313	9,3	2984	88,9	449	13,4	61	1,8
BISTRITA-NASAUD	599	100,0	92	15,4	466	77,8	502	83,8	41	6,8
BOTOSANI	436	100,0	87	20,0	331	75,9	446	102,3	18	4,1
BRASOV	2304	100,0	341	14,8	1890	82,0	1119	48,6	73	3,2
BRAILA	6470	100,0	106	1,6	6337	97,9	9	0,1	27	0,4
BUZAU	801	100,0	163	20,3	583	72,8	1046	130,6	55	6,9
CARAS-SEVERIN	565	100,0	108	19,1	437	77,3	649	114,9	20	3,5
CALARASI	370	100,0	95	25,7	265	71,6	364	98,4	10	2,7
CLUJ	3834	100,0	565	14,7	3172	82,7	1837	47,9	97	2,5
CONSTANTA	2330	100,0	349	15,0	1888	81,0	2449	105,1	93	4,0
COVASNA	394	100,0	75	19,0	290	73,6	164	41,6	29	7,4
DAMBOVITA	747	100,0	157	21,0	533	71,4	835	111,8	57	7,6
DOLJ	1808	100,0	241	13,3	1508	83,4	1645	91,0	59	3,3
GALATI	1544	100,0	252	16,3	1225	79,3	1656	107,3	67	4,3
GIURGIU	3615	100,0	86	2,4	3519	97,3	319	8,8	10	0,3
GORJ	6296	100,0	87	1,4	6166	97,9	810	12,9	43	0,7
HARGHITA	1094	100,0	189	17,3	805	73,6	620	56,7	100	9,1
HUNEDOARA	1475	100,0	118	8,0	1065	72,2	1427	96,7	292	19,8
IALOMITA	296	100,0	51	17,2	228	77,0	108	36,5	17	5,7
IASI	1974	100,0	333	16,9	1594	80,7	4086	207,0	47	2,4
MARAMURES	1222	100,0	215	17,6	930	76,1	1653	135,3	77	6,3
MEHEDINTI	382	100,0	110	28,8	241	63,1	846	221,5	31	8,1
MURES	1145	100,0	228	19,9	828	72,3	1415	123,6	89	7,8
NEAMT	959	100,0	166	17,3	740	77,2	810	84,5	53	5,5
OLT	592	100,0	173	29,2	367	62,0	781	131,9	52	8,8
PRAHOVA	2434	100,0	304	12,5	2036	83,6	1921	78,9	94	3,9
SALAJ	451	100,0	84	18,6	302	67,0	181	40,1	65	14,4
SATU MARE	964	100,0	155	16,1	770	79,9	760	78,8	39	4,0
SIBIU	1512	100,0	174	11,5	1150	76,1	523	34,6	188	12,4
SUCEAVA	1512	100,0	192	12,7	1042	68,9	1319	87,2	278	18,4
TELEORMAN	5315	100,0	111	2,1	5083	95,6	148	2,8	121	2,3
TIMIS	2540	100,0	332	13,1	1912	75,3	111	4,4	296	11,7
TULCEA	637	100,0	133	20,9	468	73,5	494	77,6	36	5,7
VASLUI	4424	100,0	82	1,9	4325	97,8	826	18,7	17	0,4
VALCEA	669	100,0	90	13,5	528	78,9	572	85,5	51	7,6
VRANCEA	661	100,0	81	12,3	527	79,7	591	89,4	53	8,0
MUN. BUCURESTI	15332	100,0	1951	12,7	13151	85,8	9486	61,9	230	1,5
ILFOV	2302	100,0	248	10,8	2012	87,4	154	6,7	42	1,8

*) by effect of implementation of Law no. 314/2001, art.1 and art. 6

Table no. 8

Number of incorporations in the trade registers by counties and capital sources in the month of December 2007

County	Total		out of which:					Ranking by: *	
			Private capital			State majority capital			Mixed capital (state+private)
			out of which:			out of which:			
			PF+AF	Companies	OC	RA	Companies		Companies
No.	%	No.	No.	No.	No.	No.	No.		
0	1	2	3	4	5	6	7	8	9
Total ROMÂNIA	9397	100,0	2945	6448			2	2	X
ALBA	144	1,5	38	106					25
ARAD	189	2,0	56	133					17
ARGES	233	2,5	86	147					12
BACAU	194	2,1	63	131					15
BIHOR	313	3,3	101	212					7
BISTRITA-NASAUD	92	1,0	32	60					33
BOTOSANI	87	0,9	55	32					35
BRASOV	341	3,6	92	249					4
BRAILA	106	1,1	36	69			1		31
BUZAU	163	1,7	62	101					22
CARAS-SEVERIN	108	1,1	25	83					30
CALARASI	95	1,0	19	76					32
CLUJ	565	6,0	199	366					2
CONSTANTA	349	3,7	98	250				1	3
COVASNA	75	0,8	41	34					41
DAMBOVITA	157	1,7	49	108					23
DOLJ	241	2,6	86	155					11
GALATI	252	2,7	102	150					9
GIURGIU	86	0,9	21	65					37
GORJ	87	0,9	36	51					36
HARGHITA	189	2,0	102	87					18
HUNEDOARA	118	1,3	33	85					27
IALOMITA	51	0,5	20	31					42
IASI	333	3,5	123	210					5
MARAMURES	215	2,3	71	144					14
MEHEDINTI	110	1,2	55	55					29
MURES	228	2,4	101	127					13
NEAMT	166	1,8	76	90					21
OLT	173	1,8	118	55					20
PRAHOVA	304	3,2	105	199					8
SALAJ	84	0,9	42	42					38
SATU MARE	155	1,6	57	98					24
SIBIU	174	1,9	62	112					19
SUCEAVA	192	2,0	91	101					16
TELEORMAN	111	1,2	46	65					28
TIMIS	332	3,5	50	281			1		6
TULCEA	133	1,4	104	29					26
VASLUI	82	0,9	29	53					39
VALCEA	90	1,0	38	52					34
VRANCEA	81	0,9	13	68					40
MUN. BUCURESTI	1951	20,8	295	1655				1	1
ILFOV	248	2,6	17	231					10

Table no.9

**Number of incorporations in the trade registers by counties and business categories
in the month of December 2007**

County	Total		out of which:						
			PF+AF	companies: 6452				RA	OC
	SNC	SCS		SRL	SA				
	No.	%	No.	No.	No.	No.	No.	No.	
0	1	2	3	4	5	6	7	8	9
Total ROMÂNIA	9397	100,0	2945	3		6389	60		
ALBA	144	1,5	38			105	1		
ARAD	189	2,0	56			131	2		
ARGES	233	2,5	86			145	2		
BACAU	194	2,1	63			131			
BIHOR	313	3,3	101			212			
BISTRITA-NASAUD	92	1,0	32			60			
BOTOSANI	87	0,9	55			32			
BRASOV	341	3,6	92			247	2		
BRAILA	106	1,1	36			69	1		
BUZAU	163	1,7	62			98	3		
CARAS-SEVERIN	108	1,1	25			82	1		
CALARASI	95	1,0	19			75	1		
CLUJ	565	6,0	199			365	1		
CONSTANTA	349	3,7	98			250	1		
COVASNA	75	0,8	41			33	1		
DAMBOVITA	157	1,7	49			107	1		
DOLJ	241	2,6	86			152	3		
GALATI	252	2,7	102			149	1		
GIURGIU	86	0,9	21			65			
GORJ	87	0,9	36			51			
HARGHITA	189	2,0	102			86	1		
HUNEDOARA	118	1,3	33			84	1		
IALOMITA	51	0,5	20			30	1		
IASI	333	3,5	123			209	1		
MARAMURES	215	2,3	71			144			
MEHEDINTI	110	1,2	55			54	1		
MURES	228	2,4	101			127			
NEAMT	166	1,8	76			89	1		
OLT	173	1,8	118			55			
PRAHOVA	304	3,2	105			198	1		
SALAJ	84	0,9	42			42			
SATU MARE	155	1,6	57			97	1		
SIBIU	174	1,9	62			112			
SUCEAVA	192	2,0	91			101			
TELEORMAN	111	1,2	46			64	1		
TIMIS	332	3,5	50			274	8		
TULCEA	133	1,4	104			28	1		
VASLUI	82	0,9	29			52	1		
VALCEA	90	1,0	38			52			
VRANCEA	81	0,9	13			67	1		
MUN. BUCURESTI	1951	20,8	295	3		1635	18		
ILFOV	248	2,6	17			230	1		

Table no. 10

Number of incorporations in the trade registers by domains of activity and business categories in the month of December 2007

CAEN segment	Field of activity	Total		out of which:						
				PF+AF	companies: 6452				RA	OC
		No.	%		No.	SNC	SCS	SRL		
		0	1	2	3	4	5	6	7	8
	Total ROMÂNIA	9397	100,0	2945	3		6389	60		
1	Agriculture, hunting and related service activities	160	1,7	69			91			
2	Forestry, logging and related service activities	35	0,4	3			31	1		
5	Fishing, fish farming and related service activities	311	3,3	301			10			
10	Mining of coal and lignite; extraction of peat	1	0,0				1			
11	Extraction of crude petroleum and natural gas; service activities incidental to oil and gas extraction, excluding surveying	1	0,0				1			
12	Mining of uranium and thorium ores									
13	Mining of metal ores									
14	Other mining and quarrying	17	0,2				17			
15	Manufacture of food products and beverages	70	0,7	25			44	1		
16	Manufacture of tobacco products									
17	Manufacture of textiles	20	0,2	5			15			
18	Manufacture of wearing apparel; dressing and dyeing of fur	42	0,4	10			32			
19	Tanning and dressing of leather; manufacture of luggage, handbags, saddlery, harness and footwear	11	0,1	1			10			
20	Manufacture of wood and of products of wood and cork, except furniture; manufacture of articles of straw and plaiting materials	78	0,8	21			57			
21	Manufacture of pulp, paper and paper products	7	0,1				7			
22	Publishing, printing and reproduction of recorded media	52	0,6	3			48	1		
23	Manufacture of coke, refined petroleum products and nuclear fuel	1	0,0				1			
24	Manufacture of chemicals and chemical products	12	0,1				11	1		
25	Manufacture of rubber and plastic products	31	0,3				31			
26	Manufacture of other non-metallic mineral products	42	0,4	10			32			
27	Manufacture of basic metals	6	0,1				5	1		
28	Manufacture of fabricated metal products, except machinery and equipment	100	1,1	26			74			
29	Manufacture of machinery and equipment n.e.c.	7	0,1	1			6			
30	Manufacture of office machinery and computers	1	0,0				1			
31	Manufacture of electrical machinery and apparatus n.e.c.	5	0,1				5			
32	Manufacture of radio, television and communication equipment and apparatus	4	0,0	1			3			
33	Manufacture of medical, precision and optical instruments, watches and clocks	14	0,1	6			8			
34	Manufacture of motor vehicles, trailers and semi-trailers	9	0,1				8	1		
35	Manufacture of other transport equipment	8	0,1				8			
36	Manufacture of furniture; manufacturing n.e.c.	66	0,7	19			47			
37	Recycling	25	0,3				25			
40	Electricity, gas, steam and hot water supply	25	0,3				22	3		
41	Collection, purification and distribution of water	3	0,0				2	1		
45	Construction	1221	13,0	180			1038	3		

Table no. 10
(continuance)

Number of incorporations in the trade registers by domains of activity and business categories in the month of December 2007

CAEN segment	Field of activity	Total		out of which:						
				PF+AF	companies: 6452				RA	OC
		No.	%		No.	SNC	SCS	SRL		
0	1	2	3	4	5	6	7	8	9	10
	Total ROMÂNIA	9397	100,0	2945	3		6389	60		
50	Sale, maintenance and repair of motor vehicles and motorcycles; retail sale of automotive fuel	210	2,2	32			178			
51	Wholesale trade and commission trade, except of motor vehicles and motorcycles	838	8,9	138			697	3		
52	Retail trade, except of motor vehicles and motorcycles; repair of personal and household goods	1353	14,4	543			809	1		
55	Hotels and restaurants	321	3,4	63			258			
60	Land transport; transport via pipelines	918	9,8	512			404	2		
61	Water transport	1	0,0				1			
62	Air transport	1	0,0				1			
63	Supporting and auxiliary transport activities; activities of travel agencies	54	0,6	11			43			
64	Post and telecommunications	83	0,9	34			46	3		
65	Financial intermediation, except insurance and pension funding	42	0,4	2			9	31		
66	Insurance and pension funding, except compulsory social security									
67	Activities auxiliary to financial intermediation	140	1,5	13			127			
70	Real estate activities	649	6,9	9	3		635	2		
71	Renting of machinery and equipment without operator and of personal and household goods	33	0,4	1			31	1		
72	Computer and related activities	341	3,6	181			159	1		
73	Research and development	10	0,1	2			8			
74	Other business activities	1434	15,3	435			996	3		
75	Public administration and defence; compulsory social security	2	0,0	2						
80	Education	97	1,0	73			24			
85	Health and social work	109	1,2	6			103			
90	Sewage and refuse disposal, sanitation and similar activities	9	0,1				9			
91	Activities of membership organizations n.e.c.									
92	Recreational, cultural and sporting activities	141	1,5	58			83			
93	Other service activities	213	2,3	139			74			
95	Activities of households as employers of domestic staff	12	0,1	9			3			
96	Extra-territorial organizations and bodies									

*)Field of activity declared when registered, according to CAEN classification

Table no. 11

Number of incorporated trading companies and the value of the subscribed share capital, by counties, in the month of December 2007

County	Total registered companies		Subscribed capital		Average subscribed capital on company
	No.	%	thousand Lei	%	thousand Lei
0	1	2	3	4	5
Total ROMÂNIA	6452	100,0	786292,0	100,0	122,6
ALBA	106	1,6	354,6	0,0	3,4
ARAD	133	2,1	661,5	0,1	5,0
ARGES	147	2,3	61099,3	7,8	415,6
BACAU	131	2,0	411,8	0,1	3,2
BIHOR	212	3,3	1349,7	0,2	6,4
BISTRITA-NASAUD	60	0,9	47,6	***	0,8
BOTOSANI	32	0,5	61,2	***	1,9
BRASOV	249	3,9	2083,2	0,3	8,4
BRAILA	70	1,1	2364,5	0,3	33,8
BUZAU	101	1,6	3804,1	0,5	38,0
CARAS-SEVERIN	83	1,3	315,9	0,0	3,9
CALARASI	76	1,2	39,2	***	0,5
CLUJ	366	5,7	19993,9	2,5	54,6
CONSTANTA	251	3,9	2202,4	0,3	8,8
COVASNA	34	0,5	4012,6	0,5	125,4
DAMBOVITA	108	1,7	75,5	***	0,7
DOLJ	155	2,4	90,2	0,0	0,6
GALATI	150	2,3	99,4	0,0	0,7
GIURGIU	65	1,0	409,5	0,1	6,3
GORJ	51	0,8	68,0	***	1,3
HARGHITA	87	1,3	116,5	0,0	1,4
HUNEDOARA	85	1,3	134,0	0,0	1,6
IALOMITA	31	0,5	104,4	0,0	3,4
IASI	210	3,3	465,2	0,1	2,2
MARAMURES	144	2,2	105,6	0,0	0,7
MEHEDINTI	55	0,9	11,8	***	0,2
MURES	127	2,0	183,2	0,0	1,4
NEAMT	90	1,4	20768,3	2,6	230,8
OLT	55	0,9	87,0	0,0	1,6
PRAHOVA	199	3,1	894,4	0,1	4,5
SALAJ	42	0,7	367,0	0,0	8,7
SATU MARE	98	1,5	82,0	0,0	0,8
SIBIU	112	1,7	1574,3	0,2	14,1
SUCEAVA	101	1,6	221,0	0,0	2,2
TELEORMAN	65	1,0	27,6	***	0,4
TIMIS	282	4,4	3689,5	0,5	13,4
TULCEA	29	0,4	6,0	***	0,2
VASLUI	53	0,8	75,7	***	1,5
VALCEA	52	0,8	165,9	0,0	3,2
VRANCEA	68	1,1	131,0	0,0	2,0
MUN. BUCURESTI	1656	25,7	615161,5	78,2	373,1
ILFOV	231	3,6	42376,2	5,4	183,4

Note: The average does not include filials because according to the Law no.31/1990 they are not juridical persons

*** Less than 0,01%

Table no. 12

Number of incorporated trading companies and the value of the subscribed share capital by legal forms, in the month of December 2007

Company type	Total registered companies		Subscribed capital		Average subscribed capital on company
	No.	%	thousand Lei	%	thousand Lei
0	1	2	3	4	5
Total ROMÂNIA	6452	100,0	786292,0	100,0	122,6
SNC	3	0,0	27,5	***	9,2
SCS					
SA	60	0,9	525749,8	66,9	20221,1
SRL	6389	99,0	260514,7	33,1	40,8
SCA					

Note: The average does not include filials because according to the Law no.31/1990 they are not juridical persons

*** Less than 0,01%

Diagram no.5

