



MINISTRY OF JUSTICE

THE NATIONAL TRADE REGISTER OFFICE

București, Bd. Unirii nr. 74, Bl. J3b, tronson II+III, sector 3; Telefon: +40 21 316.08.04, 316.08.10; Fax: +40 21 316.08.03; Cod poștal: 030837
Website: www.onrc.ro; E-mail: onrc@onrc.ro; Cod identificare Fiscală: 14942091

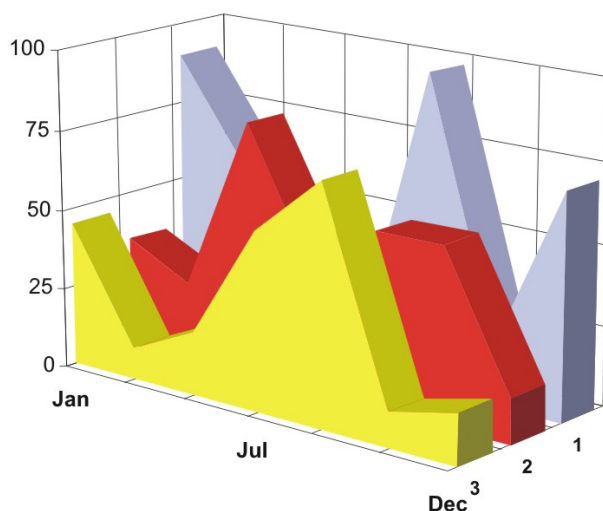
PROCEEDINGS IN THE CENTRAL TRADE REGISTER

STATISTICAL SYNTHESIS

OF

RECORDS IN THE CENTRAL TRADE REGISTER

- the 30th of November 2007 - provisional data -



- ISSUE No. 192 -

**MINISTRY OF JUSTICE
THE NATIONAL TRADE REGISTER OFFICE**

- Operations of incorporation of companies, changes in statutory documents and strike-off of companies are based on Law No.26/1990 reissued, Law No.31/1990, reissued, OUG No.76/2001, reissued and Methodology Norms No. P/608/1998.

- This paper presents the trend in operations registered in The Trade Register Office attached to the law court of Bucharest and in the Trade Register Offices attached to the law court in each county of Romania.

- Information recorded in the Central Trade Register concern operations compulsory by law to be registered in the trade registers within the 42 trade register offices attached to the law courts.

• No part of the content of this publication, in original or in any modified format, September be reproduced, stored in a retrieval system, or transmitted, in any form or by any means, without the prior permission in writing of The Ministry of Justice – The National Trade Register Office.

• The content of this publication September be referred to in articles, studies, books, as supporting or explanatory data under the condition only, the source of the information to be clearly and precisely specified.

1	Explanatory Note	1
2.1	Data for December 1990 –November 2007	3
	Table no.1 – Operations registered in the Trade Register, by categories during the period of December 1990 –November 2007, in total by country and counties, rate of categories of operations in total operations country	3
	Table no.1.a – Operations registered in the Trade Register, by categories during the period of December 1990 –November 2007, in total by country and counties, counties’ rate in total country	4
	Table no. 3 – Number and structure of incorporations in the Trade Register, by years, during the period of December 1990-November 2007	5
	Table no.4 – The number of incorporations in the Trade Register, by counties and sources of capital, in the period December 1990 -November 2007	6
	Table no. 5 – The number of incorporations in the Trade Register, by counties and categories, during the period of December 1990 –November 2007	7
	Table no. 6 – The number of incorporations in the Trade Register, by field of activity and categories, during the period of December 1990 -November 2007	8
2.2	Data for November 2007	10
	Table no. 7 – Operations carried on with the Trade Registers, by counties and categories, in November 2007	10
	Table no. 8 – The number of incorporations in the Trade Register, by counties and sources of capital, in November 2007	11
	Table no. 9 – The number of incorporations in the Trade Register, by counties and category in November 2007	12
	Table no. 10 –The number of incorporations in the Trade Register, by field of activity and categories in November 2007	13
	Table no. 11 – Number of companies registered and the amount of subscribed capital, by county in November 2007	15
	Table no. 12– Number of registered companies and the amount of subscribed capital by category, in November 2007	16
	Diagram no. 5 – Average subscribed capital on company in November 2007	16

Explanatory Note

The Trade Register Office is set-up by Law No. 26/1990, reissued and modified by OUG No. 129/2002, became an active institution since December 1990 and is structured in two levels:

- the national level, represented by the National Trade Register Office organised under the Ministry of Justice
- the local level, represented by the 42 trade register offices attached to the law courts and co-ordinated by the National Trade Register Office

The categories of businessmen compulsory to register in the trade register are:

- natural persons tradesmen and family associations doing usually commercial acts, commercial companies, national companies, companies under state supervision, and co-operative organisations
- subsidiaries registered as commercial companies and legal persons following the legal proceedings of set-up, activity and incorporation according to the type of the legally set-up company.

Usual Terms:

• incorporation – represents the registration of the company in the trade registry awarding the quality of legal person.

• other statutory documents – represent the official registration of the changes occurred in a company's life, such as: changes in headquarters' address, increase or decrease of the issued capital, merger, liquidation, strike-off, etc.

• strike-off – represents the removal of a company from the trade registry, due to dissolution and liquidation, being also the very moment the company loses its quality of legal person. Data also include the companies under the provisions of Law No. 314/2001.

• change of certificate – represents the obligation of companies set-up before OGU No. 76/2001 republished came in force, to request the incorporation certificate and fiscal registration certificate to be replaced with the new registration certificate containing the given unique registration code.

The ratio of these changes is being calculated as a proportion between the effective number of changes and the number of active companies due to operate the change.

• active company from the legal point of view – a company registered in the trade register and which is not affected by any of the situations leading to the temporary or permanent loss of this status (e.g. dissolution, liquidation, strike-off)

• operations represent all the records in the trade registry including incorporations, other statutory documents and strike-off of companies, irrespective of the object of activity, company's type and origin of the subscribed capital (local or foreign investment).

• **Terms used in tables and charts**

➤ **Number of companies:** represents, depending on the specific table, the number of companies incorporated in the related period, the number of companies being struck-off from the trade registry.

➤ **Amount of the subscribed capital:**

- **total, in local currency:** the amount of the subscribed capital resulted from totalising the amount subscribed (in cash and in kind) in local currency (ROL)

➤ **Regional development:**

North-East: Suceava, Botoşani, Neamţ, Iaşi, Bacău, Vaslui.

South-East: Vrancea, Galaţi, Buzău, Brăila, Tulcea, Constanţa.

South-Muntenia: Argeş, Dâmboviţa, Prahova, Teleorman, Giurgiu, Călăraşi, Ialomiţa.

South-West Oltenia: Gorj, Vâlcea, Dolj, Mehedinţi, Olt.

West: Arad, Caraş-Severin, Hunedoara, Timiş.

North-West: Bihor, Bistriţa, Cluj, Satu Mare, Sălaj, Maramureş.

Center: Alba, Braşov, Covasna, Harghita, Mureş, Sibiu.

Bucharest-Ilfov: Bucureşti, Ilfov.

CAEN code – The Classification of Activities in the National Economy was approved by HG No. 656/1997, modified by Order No 601 of the President of National Institute of Statistics being compatible with the international classification used in statistic reports and official documents. Activities are ranked upon homogeneity principle by sections, divisions, groups and classes.

Common abbreviations

- **PF** - Natural Persons Tradesman
- **AF** - Family association
- **SNC** - General Partnership
- **SCS** - Limited Partnership
- **SA** - Joint stock company
- **SRL** - Limited liability company
- **RA** - Company Under State Supervision
- **OC** - Co-operative organisation

Source:

The integrated IT system of the trade registry is designed by The National Trade Registry Office according to the provisions of the related legislation in force. The source of information is the computerised system of the trade registers handled by the Trade Register Offices attached to the law courts.

Table no. 1

**Operations registered in the Trade Register, by categories
during the period of December 1990 - November 2007 in total by country and counties,
- rate of categories of operations in total operations/country -**

Counties	Total of registered operations		out of which :							
			Registered companies		Changes in statutory documents		out of which : of liquidation, dissolution		Strike off companies	
	No.	%	No.	%	No.	%	No.	%	No.	%
0	1	2	3	4	5	6	7	8	11	12
Total ROMÂNIA	8992938	100,0	1691238	100,0	6791786	100,0	9911	100,0	509914	100,0
ALBA	116853	1,3	26591	1,6	85421	1,3	371	3,7	4841	0,9
ARAD	203989	2,3	41537	2,5	152113	2,2	369	3,7	10339	2,0
ARGES	217429	2,4	43522	2,6	164829	2,4	197	2,0	9078	1,8
BACAU	207766	2,3	42283	2,5	153626	2,3	1003	10,1	11857	2,3
BIHOR	260338	2,9	51430	3,0	194346	2,9	303	3,1	14562	2,9
BISTRITA-NASAUD	109114	1,2	20661	1,2	82077	1,2	72	0,7	6376	1,3
BOTOSANI	82893	0,9	20820	1,2	56351	0,8	66	0,7	5722	1,1
BRASOV	300174	3,3	52881	3,1	235803	3,5	149	1,5	11490	2,3
BRAILA	113457	1,3	23144	1,4	86546	1,3	61	0,6	3767	0,7
BUZAU	163541	1,8	30953	1,8	122048	1,8	146	1,5	10540	2,1
CARAS-SEVERIN	112775	1,3	20937	1,2	83631	1,2	41	0,4	8207	1,6
CALARASI	75167	0,8	16844	1,0	53479	0,8	79	0,8	4844	0,9
CLUJ	400234	4,5	78203	4,6	308547	4,5	197	2,0	13484	2,6
CONSTANTA	396089	4,4	70778	4,2	299257	4,4	926	9,3	26054	5,1
COVASNA	80379	0,9	14447	0,9	61512	0,9	18	0,2	4420	0,9
DAMBOVITA	134782	1,5	31447	1,9	89884	1,3	98	1,0	13451	2,6
DOLJ	247848	2,8	44512	2,6	190502	2,8	215	2,2	12834	2,5
GALATI	244524	2,7	40001	2,4	190578	2,8	125	1,3	13945	2,7
GIURGIU	62849	0,7	13722	0,8	43927	0,6	47	0,5	5200	1,0
GORJ	124451	1,4	20123	1,2	98039	1,4	48	0,5	6289	1,2
HARGHITA	131277	1,5	25967	1,5	100734	1,5	51	0,5	4576	0,9
HUNEDOARA	177634	2,0	34547	2,0	129666	1,9	126	1,3	13421	2,6
IALOMITA	84459	0,9	15716	0,9	62894	0,9	78	0,8	5849	1,1
IASI	302941	3,4	52641	3,1	238432	3,5	597	6,0	11868	2,3
MARAMURES	185987	2,1	43264	2,6	131930	1,9	159	1,6	10793	2,1
MEHEDINTI	93680	1,0	18964	1,1	66781	1,0	55	0,6	7935	1,6
MURES	251691	2,8	42553	2,5	195869	2,9	83	0,8	13269	2,6
NEAMT	190593	2,1	37143	2,2	139134	2,0	304	3,1	14316	2,8
OLT	113715	1,3	23678	1,4	81080	1,2	21	0,2	8957	1,8
PRAHOVA	311456	3,5	56068	3,3	240099	3,5	274	2,8	15289	3,0
SALAJ	76633	0,9	16434	1,0	55395	0,8	29	0,3	4804	0,9
SATU MARE	144804	1,6	28641	1,7	105861	1,6	26	0,3	10302	2,0
SIBIU	195073	2,2	32794	1,9	154681	2,3	31	0,3	7598	1,5
SUCEAVA	228020	2,5	43060	2,5	168617	2,5	29	0,3	16343	3,2
TELEORMAN	95659	1,1	18976	1,1	72068	1,1	49	0,5	4615	0,9
TIMIS	322501	3,6	59512	3,5	246745	3,6	271	2,7	16244	3,2
TULCEA	92884	1,0	17447	1,0	70307	1,0	149	1,5	5130	1,0
VASLUI	99407	1,1	21420	1,3	69523	1,0	197	2,0	8464	1,7
VALCEA	139078	1,5	27783	1,6	102955	1,5	138	1,4	8340	1,6
VRANCEA	112339	1,2	20805	1,2	87016	1,3	51	0,5	4518	0,9
MUN. BUCURESTI	1860469	20,7	321059	19,0	1425872	21,0	2641	26,6	113538	22,3
ILFOV	127986	1,4	27930	1,7	93611	1,4	21	0,2	6445	1,3

*) according to the effect of Law No. 314/2001, art.1 și art. 6

*** Less than 0,01%

Table no. 2

**Operations registered in the Trade Register, by categories
during the period of December 1990 - November 2007, in total by country and counties,
- rate of categories of operations in total operations/country -**

Counties	Total registered operations of		out of which :							
			Registered companies		Changes in statutory documents		out of which : of liquidation, dissolution		Strike off companies	
	No.	%	No.	%	No.	%	No.	%	No.	%
0	1	2	3	4	5	6	7	8	11	12
Total ROMÂNIA	8992938	100,0	1691238	18,8	6791786	75,5	9911	0,1	509914	5,7
ALBA	116853	100,0	26591	22,8	85421	73,1	371	0,3	4841	4,1
ARAD	203989	100,0	41537	20,4	152113	74,6	369	0,2	10339	5,1
ARGES	217429	100,0	43522	20,0	164829	75,8	197	0,1	9078	4,2
BACAU	207766	100,0	42283	20,4	153626	73,9	1003	0,5	11857	5,7
BIHOR	260338	100,0	51430	19,8	194346	74,7	303	0,1	14562	5,6
BISTRITA-NASAUD	109114	100,0	20661	18,9	82077	75,2	72	0,1	6376	5,8
BOTOSANI	82893	100,0	20820	25,1	56351	68,0	66	0,1	5722	6,9
BRASOV	300174	100,0	52881	17,6	235803	78,6	149	0,0	11490	3,8
BRAILA	113457	100,0	23144	20,4	86546	76,3	61	0,1	3767	3,3
BUZAU	163541	100,0	30953	18,9	122048	74,6	146	0,1	10540	6,4
CARAS-SEVERIN	112775	100,0	20937	18,6	83631	74,2	41	0,0	8207	7,3
CALARASI	75167	100,0	16844	22,4	53479	71,1	79	0,1	4844	6,4
CLUJ	400234	100,0	78203	19,5	308547	77,1	197	0,0	13484	3,4
CONSTANTA	396089	100,0	70778	17,9	299257	75,6	926	0,2	26054	6,6
COVASNA	80379	100,0	14447	18,0	61512	76,5	18	0,0	4420	5,5
DAMBOVITA	134782	100,0	31447	23,3	89884	66,7	98	0,1	13451	10,0
DOLJ	247848	100,0	44512	18,0	190502	76,9	215	0,1	12834	5,2
GALATI	244524	100,0	40001	16,4	190578	77,9	125	0,1	13945	5,7
GIURGIU	62849	100,0	13722	21,8	43927	69,9	47	0,1	5200	8,3
GORJ	124451	100,0	20123	16,2	98039	78,8	48	0,0	6289	5,1
HARGHITA	131277	100,0	25967	19,8	100734	76,7	51	0,0	4576	3,5
HUNEDOARA	177634	100,0	34547	19,4	129666	73,0	126	0,1	13421	7,6
IALOMITA	84459	100,0	15716	18,6	62894	74,5	78	0,1	5849	6,9
IASI	302941	100,0	52641	17,4	238432	78,7	597	0,2	11868	3,9
MARAMURES	185987	100,0	43264	23,3	131930	70,9	159	0,1	10793	5,8
MEHEDINTI	93680	100,0	18964	20,2	66781	71,3	55	0,1	7935	8,5
MURES	251691	100,0	42553	16,9	195869	77,8	83	0,0	13269	5,3
NEAMT	190593	100,0	37143	19,5	139134	73,0	304	0,2	14316	7,5
OLT	113715	100,0	23678	20,8	81080	71,3	21	0,0	8957	7,9
PRAHOVA	311456	100,0	56068	18,0	240099	77,1	274	0,1	15289	4,9
SALAJ	76633	100,0	16434	21,4	55395	72,3	29	0,0	4804	6,3
SATU MARE	144804	100,0	28641	19,8	105861	73,1	26	0,0	10302	7,1
SIBIU	195073	100,0	32794	16,8	154681	79,3	31	0,0	7598	3,9
SUCEAVA	228020	100,0	43060	18,9	168617	73,9	29	0,0	16343	7,2
TELEORMAN	95659	100,0	18976	19,8	72068	75,3	49	0,1	4615	4,8
TIMIS	322501	100,0	59512	18,5	246745	76,5	271	0,1	16244	5,0
TULCEA	92884	100,0	17447	18,8	70307	75,7	149	0,2	5130	5,5
VASLUI	99407	100,0	21420	21,5	69523	69,9	197	0,2	8464	8,5
VALCEA	139078	100,0	27783	20,0	102955	74,0	138	0,1	8340	6,0
VRANCEA	112339	100,0	20805	18,5	87016	77,5	51	0,0	4518	4,0
MUN. BUCURESTI	1860469	100,0	321059	17,3	1425872	76,6	2641	0,1	113538	6,1
ILFOV	127986	100,0	27930	21,8	93611	73,1	21	0,0	6445	5,0

*) according to the effect of Law No. 314/2001, art.1 și art. 6

*** Less than 0,01%

Table no.3

Number and structure of incorporations in the Trade Register, by years,
November 2007

Period (year, month)	Registered companies		Percentage	
	No.	%	%	
0	1	2	3	
Total, 30 September 2007, out of which	1691238	100,00		
Year 1990	81	0,00		
Year 1991	95840	5,67		
Year 1992	137456	8,13		
Year 1993	117078	6,92		
Year 1994	137445	8,13		
Year 1995	65479	3,87		
Year 1996	62089	3,67		
Year 1997	55663	3,29		
Year 1998	63878	3,78		
Year 1999	57197	3,38		
Year 2000	57291	3,39		
Year 2001	61265	3,62		
Year 2002	84780	5,01		
Year 2003	123582	7,31		
Year 2004	144284	8,53		
Year 2005	157375	9,31		
Year 2006	135211	7,99		
Year 2007 (I - XII) out of which :	135244			100,0
January	10979			8,1
February	13249			9,8
March	14721			10,9
April	10908			8,1
May	12749			9,4
June	12463			9,2
July	11670			8,6
August	11841			8,8
September	10950			8,10
October	13345			9,87
November	12369			9,15

Note: Column 2 reveals the annual structure of incorporations; column 3 reveals the structure by months during the current year.

*** Less than 0,01%

Diagram no.1

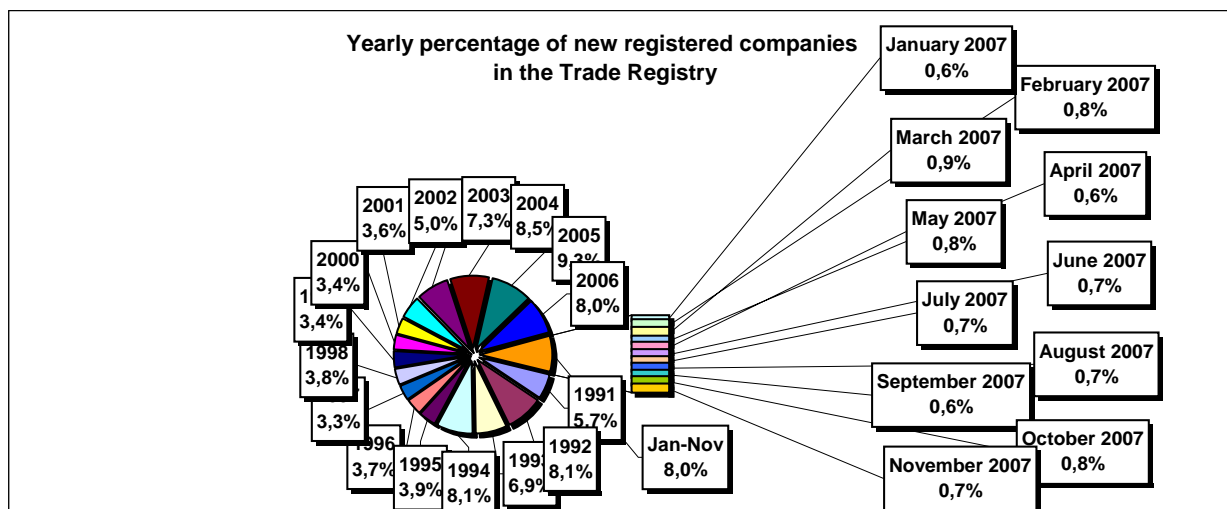


Table no. 4

The number of incorporations in the Trade Register, by counties and sources of capital, in the period December 1990 - November 2007

Counties	Total		out of which:						Ranking by: *
			Private capital			State majority capital		Mixed capital (state+private)	
			out of which:			out of which:			
			PF+AF	Companies	OC	RA	Companies	Companies	
No.	%	No.	No.	No.	No.	No.	No.		
0	1	2	3	4	5	6	7	8	9
Total ROMÂNIA	1691238	100,0	437048	1236485	5397	1348	2368	8592	X
ALBA	26591	1,6	9201	16994	141	38	47	170	25
ARAD	41538	2,5	15760	25218	157	27	41	335	15
ARGES	43522	2,6	13949	29195	168	29	29	152	10
BACAU	42283	2,5	13984	27841	158	35	42	223	14
BIHOR	51430	3,0	12253	38624	146	37	62	308	8
BISTRITA-NASAUD	20661	1,2	7299	13107	98	19	29	109	33
BOTOSANI	20820	1,2	9621	10764	122	21	173	119	31
BRASOV	52881	3,1	11154	41311	114	45	87	170	6
BRAILA	23144	1,4	5814	16997	96	28	43	166	28
BUZAU	30953	1,8	9096	21514	142	28	42	131	21
CARAS-SEVERIN	20937	1,2	7274	13324	102	35	65	137	30
CALARASI	16844	1,0	4940	11628	86	18	77	95	38
CLUJ	78203	4,6	19874	57825	150	52	40	262	2
CONSTANTA	70778	4,2	13639	56295	203	51	49	541	3
COVASNA	14447	0,9	4993	9221	68	24	32	109	41
DAMBOVITA	31447	1,9	14218	16838	134	29	75	153	20
DOLJ	44512	2,6	9094	34956	162	40	57	203	9
GALATI	40001	2,4	8162	31480	135	30	51	143	16
GIURGIU	13722	0,8	3285	10116	80	22	109	110	42
GORJ	20123	1,2	4835	14871	184	50	83	100	34
HARGHITA	25967	1,5	10511	15075	86	23	43	229	26
HUNEDOARA	34547	2,0	9059	24993	81	40	92	282	18
IALOMITA	15716	0,9	5963	9527	74	15	46	91	40
IASI	52641	3,1	14566	37463	164	34	70	344	7
MARAMURES	43264	2,6	17315	25626	124	37	39	123	11
MEHEDINTI	18964	1,1	6099	12639	82	19	27	98	36
MURES	42553	2,5	15704	26461	156	30	34	168	13
NEAMT	37143	2,2	13765	22993	161	29	30	165	17
OLT	23678	1,4	9224	14080	161	26	64	123	27
PRAHOVA	56068	3,3	17313	38185	177	50	72	271	5
SALAJ	16434	1,0	6409	9808	107	19	28	63	39
SATU MARE	28641	1,7	9461	18897	88	19	42	134	22
SIBIU	32794	1,9	8103	24272	119	34	108	158	19
SUCEAVA	43060	2,5	20533	22011	202	30	64	220	12
TELEORMAN	18976	1,1	6552	12024	152	21	45	182	35
TIMIS	59512	3,5	9656	49262	140	38	68	348	4
TULCEA	17447	1,0	6130	10979	66	18	42	212	37
VASLUI	21420	1,3	10283	10836	109	16	41	135	29
VALCEA	27783	1,6	10887	16538	168	40	37	113	24
VRANCEA	20805	1,2	6323	14221	104	16	27	114	32
MUN. BUCURESTI	321058	19,0	21228	298357	138	115	103	1117	1
ILFOV	27930	1,7	3519	24119	92	21	13	166	23

*) The total number of incorporations (col 1)

*** Less than 0,01%

Table no. 5

**The number of incorporations in the Trade Register,
by counties and categories, during the period of
December 1990 - November 2007**

County	Total		out of which:						
			PF+AF	companies: 1247445				RA	OC
	SNC	SCS		SRL	SA				
	No.	%	No.	No.	No.	No.	No.	No.	
0	1	2	3	4	5	6	7	8	9
Total ROMÂNIA	1691238	100,0	437048	32662	1577	1180676	32524	1348	5397
ALBA	26591	1,6	9201	890	11	15753	557	38	141
ARAD	41537	2,5	15760	53	11	24851	677	27	157
ARGES	43522	2,6	13949	107	15	28430	824	29	168
BACAU	42283	2,5	13984	1299	4	26073	729	35	158
BIHOR	51430	3,0	12253	126	47	37917	904	37	146
BISTRITA-NASAUD	20661	1,2	7299	146	21	12661	417	19	98
BOTOSANI	20820	1,2	9621	468	1	10134	453	21	122
BRASOV	52881	3,1	11154	239	20	40456	853	45	114
BRAILA	23144	1,4	5814	376	12	16300	518	28	96
BUZAU	30953	1,8	9096	3747	46	17322	572	28	142
CARAS-SEVERIN	20937	1,2	7274	117	9	12935	465	35	102
CALARASI	16844	1,0	4940	609	3	10835	353	18	86
CLUJ	78203	4,6	19874	2112	18	54712	1285	52	150
CONSTANTA	70778	4,2	13639	311	23	55070	1481	51	203
COVASNA	14447	0,9	4993	148	4	8913	297	24	68
DAMBOVITA	31447	1,9	14218	60	8	16509	489	29	134
DOLJ	44512	2,6	9094	1560	8	32767	881	40	162
GALATI	40001	2,4	8162	1574	6	29253	841	30	135
GIURGIU	13722	0,8	3285	35	8	9968	324	22	80
GORJ	20123	1,2	4835	29	1	14535	489	50	184
HARGHITA	25967	1,5	10511	62	6	14791	488	23	86
HUNEDOARA	34547	2,0	9059	1166	98	23430	673	40	81
IALOMITA	15716	0,9	5963	266	11	9042	345	15	74
IASI	52641	3,1	14566	507	111	36248	1009	34	164
MARAMURES	43264	2,6	17315	1927	23	23245	592	37	124
MEHEDINTI	18964	1,1	6099	427	3	12006	328	19	82
MURES	42553	2,5	15704	37	34	25926	666	30	156
NEAMT	37143	2,2	13765	3293	30	19196	669	29	161
OLT	23678	1,4	9224	1611	1	12165	490	26	161
PRAHOVA	56068	3,3	17313	3122	14	34492	900	50	177
SALAJ	16434	1,0	6409	600	4	9003	292	19	107
SATU MARE	28641	1,7	9461	283	6	18313	471	19	88
SIBIU	32794	1,9	8103	777	48	23054	659	34	119
SUCEAVA	43060	2,5	20533	438	8	21264	585	30	202
TELEORMAN	18976	1,1	6552	272	399	11166	414	21	152
TIMIS	59512	3,5	9656	612	29	47785	1252	38	140
TULCEA	17447	1,0	6130	1363	114	9279	477	18	66
VASLUI	21420	1,3	10283	90	12	10498	412	16	109
VALCEA	27783	1,6	10887	364	6	15831	487	40	168
VRANCEA	20805	1,2	6323	356	10	13548	448	16	104
MUN. BUCURESTI	321059	19,0	21228	1034	303	291394	6846	115	138
ILFOV	27930	1,7	3519	49	31	23606	612	21	92

Table no. 6

The number of incorporations in the Trade Register, by field of activity*
during the period of December 1990 - November 2007

CAEN segment	Field of activity	Total		out of which:						
				PF+AF	companies: 1247445				RA	OC
		No.	%		No.	SNC	SCS	SRL		
				No.		No.	No.	No.	No.	No.
0	1	2	3	4	5	6	7	8	9	10
	Total ROMÂNIA	1691238	100,0	437048	32662	1577	1180676	32524	1348	5397
1	Agriculture, hunting and related service activities	66804	4,0	17519	2024	45	43253	3793	53	117
2	Forestry, logging and related service activities	8953	0,5	1187	152	3	7285	222	96	8
5	Fishing, fish farming and related service activities	3823	0,2	2387	17	3	1362	54		
10	Mining of coal and lignite; extraction of peat	125	0,0	2			87	32	4	
11	Extraction of crude petroleum and natural gas; service activities incidental to oil and gas extraction, excluding surveying	371	0,0	26	1		173	125	46	
12	Mining of uranium and thorium ores	133	0,0	32			95	6		
13	Mining of metal ores	540	0,0	163			314	55	8	
14	Other mining and quarrying	1809	0,1	110	9	1	1515	171	2	1
15	Manufacture of food products and beverages	74547	4,4	14975	3260	149	54047	1863	5	248
16	Manufacture of tobacco products	293	0,0	47			214	31	1	
17	Manufacture of textiles	11988	0,7	2447	556	16	8418	406		145
18	Manufacture of wearing apparel; dressing and dyeing of fur	21636	1,3	4974	875	38	15084	359	1	305
19	Tanning and dressing of leather; manufacture of luggage, handbags, saddlery, harness and footwear	5503	0,3	941	112	6	4269	123	1	51
20	Manufacture of wood and of products of wood and cork, except furniture; manufacture of articles of straw and plaiting materials	26148	1,5	9351	575	29	15643	499	9	42
21	Manufacture of pulp, paper and paper products	1869	0,1	129	21	1	1607	98		13
22	Publishing, printing and reproduction of recorded media	12446	0,7	1006	317	22	10669	408	14	10
23	Manufacture of coke, refined petroleum products and nuclear fuel	269	0,0	25			207	35	2	
24	Manufacture of chemicals and chemical products	3815	0,2	121	89	1	3212	380	6	6
25	Manufacture of rubber and plastic products	6640	0,4	592	314	7	5439	263		24
26	Manufacture of other non-metallic mineral products	9908	0,6	3044	212	6	6235	392	5	14
27	Manufacture of basic metals	2490	0,1	175	39	3	2055	208	3	7
28	Manufacture of fabricated metal products, except machinery and equipment	18608	1,1	4688	361	23	12737	726	11	62
29	Manufacture of machinery and equipment n.e.c.	3962	0,2	114	44	7	3350	423	19	5
30	Manufacture of office machinery and computers	1803	0,1	16	25	4	1678	80		
31	Manufacture of electrical machinery and apparatus n.e.c.	2021	0,1	112	44	6	1709	144		6
32	Manufacture of radio, television and communication equipment and apparatus	903	0,1	67	14	4	744	73		1
33	Manufacture of medical, precision and optical instruments, watches and clocks	2795	0,2	667	17	2	1999	106		4
34	Manufacture of motor vehicles, trailers and semi-trailers	953	0,1	31	31	3	760	126		2
35	Manufacture of other transport equipment	2072	0,1	302	86	7	1477	125	73	2
36	Manufacture of furniture; manufacturing n.e.c.	16491	1,0	4704	284	16	10986	338	5	158
37	Recycling	5286	0,3	453	51	5	4601	175		1
40	Electricity, gas, steam and hot water supply	3186	0,2	840	3	1	1705	548	89	
41	Collection, purification and distribution of water	3601	0,2	1637	2		1666	223	73	
45	Construction	113968	6,7	29212	611	44	81504	2466	54	77

*)Field of activity declared when registered, according to CAEN classification

Table no. 6
(continuing)

**The number of incorporations in the Trade Register, by field of activity*
and categories, during the period of December 1990 - November 2007**

CAEN segment	Field of activity	Total		out of which:						RA	OC
				PF+AF	companies: 1247445						
					SNC	SCS	SRL	SA			
					No.	No.	No.	No.			
0	1	2	3	4	5	6	7	8	9	10	
	Total ROMÂNIA	1691238	100,0	437048	32662	1577	1180676	32524	1348	5397	
50	Sale, maintenance and repair of motor vehicles and motorcycles; retail sale of automotive fuel	57415	3,4	9138	1244		45924	1027	6	42	
51	Wholesale trade and commission trade, except of motor vehicles and motorcycles	214677	12,7	20008	4525	152	186352	3323	35	282	
52	Retail trade, except of motor vehicles and motorcycles; repair of personal and household goods	522389	30,9	185964	11916	559	319058	2500	6	2385	
55	Hotels and restaurants	65051	3,8	15211	1636	126	47116	794	73	95	
60	Land transport; transport via pipelines	89902	5,3	38534	845	37	49382	1061	33	10	
61	Water transport	906	0,1	176	82	8	505	64	70	1	
62	Air transport	317	0,0	18			239	50	10		
63	Supporting and auxiliary transport activities; activities of travel agencies	11364	0,7	798	220	14	9782	443	96	11	
64	Post and telecommunications	8278	0,5	1030	11	1	6915	307	11	3	
65	Financial intermediation, except insurance and pension funding	6973	0,4	152	15		3148	2623	2	1033	
66	Insurance and pension funding, except compulsory social security	2102	0,1	623	1		519	958		1	
67	Activities auxiliary to financial intermediation	8047	0,5	1370	7	2	6363	297		8	
70	Real estate activities	30377	1,8	834	30	10	28769	710	17	7	
71	Renting of machinery and equipment without operator and of personal and household goods	4087	0,2	746	116	8	3046	100	70	1	
72	Computer and related activities	27437	1,6	6525	120	13	20387	387	2	3	
73	Research and development	1856	0,1	263	11	2	1362	173	43	2	
74	Other business activities	127515	7,5	27434	797	78	97330	1709	106	60	
75	Public administration and defence; compulsory social security	370	0,0	94	5		222	26	22	1	
80	Education	8361	0,5	4397	62	6	3830	66			
85	Health and social work	17335	1,0	2181	233	16	14816	85	3	1	
90	Sewage and refuse disposal, sanitation and similar activities	1083	0,1	113	13	2	823	112	18		
91	Activities of membership organizations n.e.c.	220	0,0	97	1		104	15		3	
92	Recreational, cultural and sporting activities	18923	1,1	5327	202	14	12993	306	69	12	
93	Other service activities	29361	1,7	13147	418	42	15244	307	76	126	
95	Activities of households as employers of domestic staff	1044	0,1	706	6	1	327	3		1	
96	Extra-territorial organizations and bodies	11	0,0	11							

*)Field of activity declared when registered, according to CAEN classification

Table no. 7

**Operations carried on with the Trade Registers,
by counties and categories,
in November 2007**

County	Total of operations carried on		out of which:							
			New incorporations		Changes in statutory documents		out of which: of liquidation, dissolution		Strike off companies	
	No.	%	No.	%	No.	%	No.	%	No.	%
0	1	2	3	4	5	6	7	8	9	10
Total ROMÂNIA	78182	100,0	12369	15,8	61901	79,2	1050	1,3	3912	5,0
ALBA	802	100,0	197	24,6	546	68,1	4	0,5	59	7,4
ARAD	2003	100,0	283	14,1	1533	76,5	27	1,3	187	9,3
ARGES	1514	100,0	293	19,4	1146	75,7	12	0,8	75	5,0
BACAU	1051	100,0	269	25,6	740	70,4	12	1,1	42	4,0
BIHOR	2312	100,0	455	19,7	1657	71,7			200	8,7
BISTRITA-NASAUD	854	100,0	148	17,3	653	76,5	40	4,7	53	6,2
BOTOSANI	657	100,0	155	23,6	418	63,6			84	12,8
BRASOV	2940	100,0	436	14,8	2413	82,1	23	0,8	91	3,1
BRAILA	1263	100,0	152	12,0	894	70,8	2	0,2	217	17,2
BUZAU	1129	100,0	210	18,6	810	71,7	13	1,2	109	9,7
CARAS-SEVERIN	903	100,0	204	22,6	663	73,4	3	0,3	36	4,0
CALARASI	235	100,0	112	47,7	115	48,9	2	0,9	8	3,4
CLUJ	4460	100,0	610	13,7	3742	83,9	38	0,9	108	2,4
CONSTANTA	4722	100,0	505	10,7	4029	85,3	150	3,2	188	4,0
COVASNA	552	100,0	95	17,2	398	72,1	9	1,6	59	10,7
DAMBOVITA	940	100,0	170	18,1	710	75,5	3	0,3	60	6,4
DOLJ	1935	100,0	265	13,7	1543	79,7	16	0,8	127	6,6
GALATI	1721	100,0	284	16,5	1388	80,7	105	6,1	49	2,8
GIURGIU	741	100,0	84	11,3	438	59,1			219	29,6
GORJ	880	100,0	128	14,5	686	78,0	43	4,9	66	7,5
HARGHITA	946	100,0	158	16,7	741	78,3	33	3,5	47	5,0
HUNEDOARA	1368	100,0	220	16,1	1110	81,1	25	1,8	38	2,8
IALOMITA	501	100,0	79	15,8	387	77,2			35	7,0
IASI	2696	100,0	473	17,5	2061	76,4	65	2,4	162	6,0
MARAMURES	1557	100,0	254	16,3	1214	78,0	33	2,1	89	5,7
MEHEDINTI	3558	100,0	173	4,9	3365	94,6	40	1,1	20	0,6
MURES	1281	100,0	281	21,9	931	72,7	32	2,5	69	5,4
NEAMT	1422	100,0	248	17,4	1017	71,5	15	1,1	157	11,0
OLT	798	100,0	162	20,3	616	77,2	5	0,6	20	2,5
PRAHOVA	2500	100,0	447	17,9	1904	76,2	18	0,7	149	6,0
SALAJ	558	100,0	94	16,8	412	73,8	10	1,8	52	9,3
SATU MARE	1129	100,0	234	20,7	856	75,8	31	2,7	39	3,5
SIBIU	1545	100,0	242	15,7	1217	78,8	6	0,4	86	5,6
SUCEAVA	1507	100,0	277	18,4	1144	75,9	17	1,1	86	5,7
TELEORMAN	598	100,0	105	17,6	385	64,4	4	0,7	108	18,1
TIMIS	2788	100,0	484	17,4	2084	74,7	67	2,4	220	7,9
TULCEA	460	100,0	176	38,3	261	56,7	1	0,2	23	5,0
VASLUI	456	100,0	118	25,9	309	67,8	2	0,4	29	6,4
VALCEA	825	100,0	146	17,7	613	74,3	15	1,8	66	8,0
VRANCEA	921	100,0	101	11,0	764	83,0			56	6,1
MUN. BUCURESTI	16754	100,0	2428	14,5	14051	83,9	116	0,7	275	1,6
ILFOV	2400	100,0	414	17,3	1937	80,7	13	0,5	49	2,0

*) by effect of implementation of Law no. 314/2001, art.1 and art. 6

*** Less than 0,01%

Table no. 8

**The number of incorporations in the Trade Register,
by counties and sources of capital,
in November 2007**

County	Total		out of which:					Rnking by: *	
			Private capital			State majority capital			Mixed capital (state+priva)
			out of which:			out of which:			
			PF+AF	Companies	OC	RA	Companie s		Companie s
No.	%	No.	No.	No.	No.	No.	No.		
0	1	2	3	4	5	6	7	8	9
Total ROMÂNIA	12369	100,0	3443	8925				1	X
ALBA	197	1,6	70	127					24
ARAD	283	2,3	89	194					12
ARGES	293	2,4	72	221					10
BACAU	269	2,2	93	176					15
BIHOR	455	3,7	160	295					6
BISTRITA-NASAUD	148	1,2	40	108					32
BOTOSANI	155	1,3	93	62					30
BRASOV	436	3,5	107	329					8
BRAILA	152	1,2	41	111					31
BUZAU	210	1,7	64	146					22
CARAS-SEVERIN	204	1,6	102	102					23
CALARASI	112	0,9	30	82					36
CLUJ	610	4,9	149	461					2
CONSTANTA	505	4,1	86	419					3
COVASNA	95	0,8	38	57					39
DAMBOVITA	170	1,4	55	115					27
DOLJ	265	2,1	63	202					16
GALATI	284	2,3	100	184					11
GIURGIU	84	0,7	24	60					41
GORJ	128	1,0	42	86					34
HARGHITA	158	1,3	65	93					29
HUNEDOARA	220	1,8	48	172					21
IALOMITA	79	0,6	17	62					42
IASI	473	3,8	174	299					5
MARAMURES	254	2,1	77	177					17
MEHEDINTI	173	1,4	107	66					26
MURES	281	2,3	97	184					13
NEAMT	248	2,0	92	156					18
OLT	162	1,3	31	131					28
PRAHOVA	447	3,6	139	308					7
SALAJ	94	0,8	39	55					40
SATU MARE	234	1,9	90	144					20
SIBIU	242	2,0	93	149					19
SUCEAVA	277	2,2	115	162					14
TELEORMAN	105	0,8	34	71					37
TIMIS	484	3,9	84	400					4
TULCEA	176	1,4	121	55					25
VASLUI	118	1,0	44	74					35
VALCEA	146	1,2	41	105					33
VRANCEA	101	0,8	22	79					38
MUN. BUCURESTI	2428	19,6	368	2059				1	1
ILFOV	414	3,3	27	387					9

*) The total number of incorporations (col 1)

*** Less than 0,01%

Table no.9

**The number of incorporations in the Trade Register,
by counties and category
in November 2007**

County	Total		out of which:						RA	OC
			PF+AF	companies: 8926						
	No.	%		No.	SNC	SCS	SRL	SA	No.	No.
			No.		No.	No.	No.			
0	1	2	3	4	5	6	7	8	9	
Total ROMÂNIA	12369	100,0	3443	1	2	8864	59			
ALBA	197	1,6	70			126	1			
ARAD	283	2,3	89			194				
ARGES	293	2,4	72			217	4			
BACAU	269	2,2	93			174	2			
BIHOR	455	3,7	160			292	3			
BISTRITA-NASAUD	148	1,2	40			107	1			
BOTOSANI	155	1,3	93			61	1			
BRASOV	436	3,5	107			327	2			
BRAILA	152	1,2	41			110	1			
BUZAU	210	1,7	64			145	1			
CARAS-SEVERIN	204	1,6	102		1	101				
CALARASI	112	0,9	30			81	1			
CLUJ	610	4,9	149			457	4			
CONSTANTA	505	4,1	86			414	5			
COVASNA	95	0,8	38			57				
DAMBOVITA	170	1,4	55			114	1			
DOLJ	265	2,1	63			202				
GALATI	284	2,3	100			184				
GIURGIU	84	0,7	24			60				
GORJ	128	1,0	42			86				
HARGHITA	158	1,3	65			93				
HUNEDOARA	220	1,8	48			172				
IALOMITA	79	0,6	17			61	1			
IASI	473	3,8	174			295	4			
MARAMURES	254	2,1	77			177				
MEHEDINTI	173	1,4	107			66				
MURES	281	2,3	97			182	2			
NEAMT	248	2,0	92			156				
OLT	162	1,3	31			131				
PRAHOVA	447	3,6	139			306	2			
SALAJ	94	0,8	39			55				
SATU MARE	234	1,9	90			144				
SIBIU	242	2,0	93			148	1			
SUCEAVA	277	2,2	115			160	2			
TELEORMAN	105	0,8	34			71				
TIMIS	484	3,9	84	1		396	3			
TULCEA	176	1,4	121			54	1			
VASLUI	118	1,0	44			72	2			
VALCEA	146	1,2	41			104	1			
VRANCEA	101	0,8	22			79				
MUN. BUCURESTI	2428	19,6	368		1	2049	10			
ILFOV	414	3,3	27			384	3			

Table no. 10

**The number of incorporations in the Trade Register, by field of activity*
and categories in November 2007**

CAEN segment	Field of activity	Total		out of which:						RA	OC
				PF+AF	companies: 8926						
		SNC	SCS		SRL	SA	No.	No.			
		No.	%	No.	No.	No.			No.	No.	No.
0	1	2	3	4	5	6	7	8	9	10	
	Total ROMÂNIA	12369	100,0	3443	1	2	8864	59			
1	Agriculture, hunting and related service activities	216	1,7	86		1	129				
2	Forestry, logging and related service activities	58	0,5	9			49				
5	Fishing, fish farming and related service activities	283	2,3	274			9				
10	Mining of coal and lignite; extraction of peat										
11	Extraction of crude petroleum and natural gas; service activities incidental to oil and gas extraction, excluding surveying	4	0,0	3			1				
12	Mining of uranium and thorium ores										
13	Mining of metal ores										
14	Other mining and quarrying	21	0,2				21				
15	Manufacture of food products and beverages	107	0,9	52			55				
16	Manufacture of tobacco products	1	0,0				1				
17	Manufacture of textiles	26	0,2	4			22				
18	Manufacture of wearing apparel; dressing and dyeing of fur	63	0,5	18			45				
19	Tanning and dressing of leather; manufacture of luggage, handbags, saddlery, harness and footwear	19	0,2	5			14				
20	Manufacture of wood and of products of wood and cork, except furniture; manufacture of articles of straw and plaiting materials	94	0,8	31			63				
21	Manufacture of pulp, paper and paper products	6	0,0				6				
22	Publishing, printing and reproduction of recorded media	53	0,4	4			49				
23	Manufacture of coke, refined petroleum products and nuclear fuel	2	0,0				1	1			
24	Manufacture of chemicals and chemical products	8	0,1				8				
25	Manufacture of rubber and plastic products	38	0,3	1			37				
26	Manufacture of other non-metallic mineral products	52	0,4	8			44				
27	Manufacture of basic metals	5	0,0				5				
28	Manufacture of fabricated metal products, except machinery and equipment	125	1,0	29			96				
29	Manufacture of machinery and equipment n.e.c.	12	0,1	1			10	1			
30	Manufacture of office machinery and computers	5	0,0				5				
31	Manufacture of electrical machinery and apparatus n.e.c.	12	0,1				12				
32	Manufacture of radio, television and communication equipment and apparatus	6	0,0	1			5				
33	Manufacture of medical, precision and optical instruments, watches and clocks	11	0,1	5			6				
34	Manufacture of motor vehicles, trailers and semi- trailers	4	0,0				4				
35	Manufacture of other transport equipment	5	0,0				5				
36	Manufacture of furniture; manufacturing n.e.c.	102	0,8	30			72				
37	Recycling	32	0,3	1			31				
40	Electricity, gas, steam and hot water supply	30	0,2	1			29				
41	Collection, purification and distribution of water										
45	Construction	1477	11,9	220			1256	1			

Table no. 10
(continuance)

**The number of incorporations in the Trade Register, by field of activity*
and categories in November 2007**

CAEN segment	Field of activity	Total		out of which:						
				PF+AF	companies: 8926				RA	OC
		No.	%		No.	SNC	SCS	SRL		
				No.		No.	No.	No.	No.	No.
0	1	2	3	4	5	6	7	8	9	10
	Total ROMÂNIA	12369	100,0	3443	1	2	8864	59		
50	Sale, maintenance and repair of motor vehicles and motorcycles; retail sale of automotive fuel	262	2,1	30			232			
51	Wholesale trade and commission trade, except of motor vehicles and motorcycles	1084	8,8	173			911			
52	Retail trade, except of motor vehicles and motorcycles; repair of personal and household goods	2238	18,1	756			1481	1		
55	Hotels and restaurants	482	3,9	60			421	1		
60	Land transport; transport via pipelines	1117	9,0	462			655			
61	Water transport	4	0,0				4			
62	Air transport	3	0,0				3			
63	Supporting and auxiliary transport activities; activities of travel agencies	111	0,9	13			98			
64	Post and telecommunications	88	0,7	32			56			
65	Financial intermediation, except insurance and pension funding	57	0,5				22	35		
66	Insurance and pension funding, except compulsory social security	3	0,0	1				2		
67	Activities auxiliary to financial intermediation	163	1,3	22			139	2		
70	Real estate activities	725	5,9	7		1	713	4		
71	Renting of machinery and equipment without operator and of personal and household goods	62	0,5	2			60			
72	Computer and related activities	427	3,5	209			217	1		
73	Research and development	8	0,1				8			
74	Other business activities	1822	14,7	520	1		1292	9		
75	Public administration and defence; compulsory social security	1	0,0	1						
80	Education	161	1,3	105			56			
85	Health and social work	132	1,1	8			124			
90	Sewage and refuse disposal, sanitation and similar activities	16	0,1	2			13	1		
91	Activities of membership organizations n.e.c.	2	0,0	1			1			
92	Recreational, cultural and sporting activities	204	1,6	64			140			
93	Other service activities	296	2,4	170			126			
95	Activities of households as employers of domestic staff	23	0,2	21			2			
96	Extra-territorial organizations and bodies									

*)Field of activity declared when registered, according to CAEN classification

Table no. 11

**Number of companies registered and the amount
of subscribed capital, by county in November 2007**

County	Total registered companies		Subscribed capital		Average subscribed capital on company
	No.	%	thousand RONI	%	thousand RONI
0	1	2	3	4	5
Total ROMÂNIA	8926	100,0	235415,5	100,0	26,5
ALBA	127	1,4	55,5	0,0	0,4
ARAD	194	2,2	220,7	0,1	1,1
ARGES	221	2,5	731,0	0,3	3,3
BACAU	176	2,0	651,8	0,3	3,8
BIHOR	295	3,3	773,3	0,3	2,6
BISTRITA-NASAUD	108	1,2	341,7	0,1	3,2
BOTOSANI	62	0,7	344,1	0,1	5,6
BRASOV	329	3,7	117278,4	49,8	357,6
BRAILA	111	1,2	160,1	0,1	1,5
BUZAU	146	1,6	1803,4	0,8	12,4
CARAS-SEVERIN	102	1,1	385,2	0,2	3,8
CALARASI	82	0,9	108,3	0,0	1,3
CLUJ	461	5,2	1671,6	0,7	3,7
CONSTANTA	419	4,7	5821,4	2,5	14,1
COVASNA	57	0,6	105,7	0,0	1,9
DAMBOVITA	115	1,3	167,6	0,1	1,5
DOLJ	202	2,3	499,5	0,2	2,5
GALATI	184	2,1	72,6	0,0	0,4
GIURGIU	60	0,7	4512,8	1,9	75,2
GORJ	86	1,0	32,7	0,0	0,4
HARGHITA	93	1,0	99,2	0,0	1,1
HUNEDOARA	172	1,9	202,5	0,1	1,2
IALOMITA	62	0,7	1146,1	0,5	18,8
IASI	299	3,3	8069,5	3,4	27,1
MARAMURES	177	2,0	329,2	0,1	1,9
MEHEDINTI	66	0,7	14,7	***	0,2
MURES	184	2,1	210,4	0,1	1,1
NEAMT	156	1,7	1386,1	0,6	8,9
OLT	131	1,5	315,7	0,1	2,4
PRAHOVA	308	3,5	596,1	0,3	1,9
SALAJ	55	0,6	13,2	***	0,2
SATU MARE	144	1,6	107,4	0,0	0,7
SIBIU	149	1,7	204,8	0,1	1,4
SUCEAVA	162	1,8	193,4	0,1	1,2
TELEORMAN	71	0,8	42,9	0,0	0,6
TIMIS	400	4,5	1753,1	0,7	4,4
TULCEA	55	0,6	96,8	0,0	1,8
VASLUI	74	0,8	86,8	0,0	1,2
VALCEA	105	1,2	79,3	0,0	0,8
VRANCEA	79	0,9	52,2	0,0	0,7
MUN. BUCURESTI	2060	23,1	53083,3	22,5	25,9
ILFOV	387	4,3	31595,4	13,4	82,1

Note: The average does not include filials because according to the Law no.31/1990 they are not juridical persons

*** Less than 0,01%

Table no. 12

**Number of registered companies and the amount
of subscribed capital by category,
in November 2007**

Company type	Total registered companies		Subscribed capital		Average subscribed capital on company
	No.	%	thousand RONI	%	thousand RONI
0	1	2	3	4	5
Total ROMÂNIA	8926	100,0	235415,5	100,0	26,5
SNC	1	0,0	1,0	***	1,0
SCS	2	0,0	49,4	0,0	24,7
SA	59	0,7	152959,4	65,0	8050,5
SRL	8864	99,3	82405,7	35,0	9,3
SCA					

Note: The average does not include filials because according to the Law no.31/1990 they are not juridical persons

*** Less than 0,01%

Diagram no.5

