



MINISTRY OF JUSTICE

THE NATIONAL TRADE REGISTER OFFICE

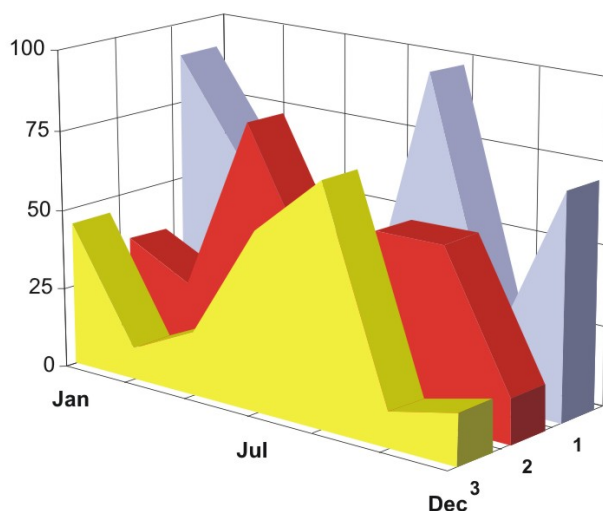
București, Bd. Unirii nr. 74, Bl. J3b, tronson II+III, sector 3; Telefon: +40 21 316.08.04, 316.08.10; Fax: +40 21 316.08.03; Cod poștal: 030837
Website: www.onrc.ro; E-mail: onrc@onrc.ro; Cod identificare Fiscală: 14942091

PROCEEDINGS IN THE CENTRAL TRADE REGISTER

STATISTICAL SYNTHESIS

OF

**RECORDS IN THE CENTRAL TRADE REGISTER
- the 31th of October 2007 - provisional data -**



- ISSUE No. 191 -

**MINISTRY OF JUSTICE
THE NATIONAL TRADE REGISTER OFFICE**

- Operations of incorporation of companies, changes in statutory documents and strike-off of companies are based on Law No.26/1990 reissued, Law No.31/1990, reissued, OUG No.76/2001, reissued and Methodology Norms No. P/608/1998.

- This paper presents the trend in operations registered in The Trade Register Office attached to the law court of Bucharest and in the Trade Register Offices attached to the law court in each county of Romania.

- Information recorded in the Central Trade Register concern operations compulsory by law to be registered in the trade registers within the 42 trade register offices attached to the law courts.

• No part of the content of this publication, in original or in any modified format, September be reproduced, stored in a retrieval system, or transmitted, in any form or by any means, without the prior permission in writing of The Ministry of Justice – The National Trade Register Office.

• The content of this publication September be referred to in articles, studies, books, as supporting or explanatory data under the condition only, the source of the information to be clearly and precisely specified.

1	Explanatory Note	1
2.1	Data for December 1990 –October 2007	3
	Table no.1 – Operations registered in the Trade Register, by categories during the period of December 1990 –October 2007, in total by country and counties, rate of categories of operations in total operations country	3
	Table no.1.a – Operations registered in the Trade Register, by categories during the period of December 1990 –October 2007, in total by country and counties, counties’ rate in total country	4
	Table no. 3 – Number and structure of incorporations in the Trade Register, by years, during the period of December 1990-October 2007	5
	Table no.4 – The number of incorporations in the Trade Register, by counties and sources of capital, in the period December 1990 -October 2007	6
	Table no. 5 – The number of incorporations in the Trade Register, by counties and categories, during the period of December 1990 –October 2007	7
	Table no. 6 – The number of incorporations in the Trade Register, by field of activity and categories, during the period of December 1990 -October 2007	8
2.2	Data for October 2007	10
	Table no. 7 – Operations carried on with the Trade Registers, by counties and categories, in October 2007	10
	Table no. 8 – The number of incorporations in the Trade Register, by counties and sources of capital, in October 2007	11
	Table no. 9 – The number of incorporations in the Trade Register, by counties and category in October 2007	12
	Table no. 10 –The number of incorporations in the Trade Register, by field of activity and categories in October 2007	13
	Table no. 11 – Number of companies registered and the amount of subscribed capital, by county in October 2007	15
	Table no. 12– Number of registered companies and the amount of subscribed capital by category, in October 2007	16
	Diagram no. 5 – Average subscribed capital on company in October 2007	16

The Trade Register Office is set-up by Law No. 26/1990, reissued and modified by OUG No. 129/2002, became an active institution since December 1990 and is structured in two levels:

- the national level, represented by the National Trade Register Office organised under the Ministry of Justice
- the local level, represented by the 42 trade register offices attached to the law courts and co-ordinated by the National Trade Register Office

The categories of businessmen compulsory to register in the trade register are:

- natural persons tradesmen and family associations doing usually commercial acts, commercial companies, national companies, companies under state supervision, and co-operative organisations
- subsidiaries registered as commercial companies and legal persons following the legal proceedings of set-up, activity and incorporation according to the type of the legally set-up company.

Usual Terms:

- incorporation – represents the registration of the company in the trade registry awarding the quality of legal person.

- other statutory documents – represent the official registration of the changes occurred in a company's life, such as: changes in headquarters' address, increase or decrease of the issued capital, merger, liquidation, strike-off, etc.

- strike-off – represents the removal of a company from the trade registry, due to dissolution and liquidation, being also the very moment the company loses its quality of legal person. Data also include the companies under the provisions of Law No. 314/2001.

- change of certificate – represents the obligation of companies set-up before OGU No. 76/2001 republished came in force, to request the incorporation certificate and fiscal registration certificate to be replaced with the new registration certificate containing the given unique registration code.

The ratio of these changes is being calculated as a proportion between the effective number of changes and the number of active companies due to operate the change.

- active company from the legal point of view – a company registered in the trade register and which is not affected by any of the situations leading to the temporary or permanently loss of this status (e.g. dissolution, liquidation, strike-off)

- operations represent all the records in the trade registry including incorporations, other statutory documents and strike-off of companies, irrespective of the object of activity, company's type and origin of the subscribed capital (local or foreign investment).

• **Terms used in tables and charts**

➤ **Number of companies:** represents, depending on the specific table, the number of companies incorporated in the related period, the number of companies being struck-off from the trade registry.

➤ **Amount of the subscribed capital:**

- **total, in local currency:** the amount of the subscribed capital resulted from totalising the amount subscribed (in cash and in kind) in local currency (ROL)

➤ **Regional development:**

North-East: Suceava, Botoșani, Neamț, Iași, Bacău, Vaslui.

South-East: Vrancea, Galați, Buzău, Brăila, Tulcea, Constanța.

South-Muntenia: Argeș, Dâmbovița, Prahova, Teleorman, Giurgiu, Călărași, Ialomița.

South-West Oltenia: Gorj, Vâlcea, Dolj, Mehedinți, Olt.

West: Arad, Caraș-Severin, Hunedoara, Timiș.

North-West: Bihor, Bistrița, Cluj, Satu Mare, Sălaj, Maramureș.

Center: Alba, Brașov, Covasna, Harghita, Mureș, Sibiu.

Bucharest-Ilfov: București, Ilfov.

CAEN code – The Classification of Activities in the National Economy was approved by HG No. 656/1997, modified by Order No 601 of the President of National Institute of Statistics being compatible with the international classification used in statistic reports and official documents. Activities are ranked upon homogeneity principle by sections, divisions, groups and classes.

Common abbreviations

- **PF** - Natural Persons Tradesman
- **AF** - Family association
- **SNC** - General Partnership
- **SCS** - Limited Partnership
- **SA** - Joint stock company
- **SRL** - Limited liability company
- **RA** - Company Under State Supervision
- **OC** - Co-operative organisation

Source:

The integrated IT system of the trade registry is designed by The National Trade Registry Office according to the provisions of the related legislation in force. The source of information is the computerised system of the trade registers handled by the Trade Register Offices attached to the law courts.

Table no. 1

**Operations registered in the Trade Register, by categories
during the period of December 1990 - October 2007 in total by country and counties,
- rate of categories of operations in total operations/country -**

Counties	Total of registered operations		out of which :							
			Registered companies		Changes in statutory documents		out of which : of liquidation, dissolution		Strike off companies	
	No.	%	No.	%	No.	%	No.	%	No.	%
0	1	2	3	4	5	6	7	8	11	12
Total ROMÂNIA	8914756	100,0	1678869	100,0	6729885	100,0	9911	100,0	506002	100,0
ALBA	116051	1,3	26394	1,6	84875	1,3	371	3,7	4782	0,9
ARAD	201986	2,3	41254	2,5	150580	2,2	369	3,7	10152	2,0
ARGES	215915	2,4	43229	2,6	163683	2,4	197	2,0	9003	1,8
BACAU	206715	2,3	42014	2,5	152886	2,3	1003	10,1	11815	2,3
BIHOR	258026	2,9	50975	3,0	192689	2,9	303	3,1	14362	2,8
BISTRITA-NASAUD	108260	1,2	20513	1,2	81424	1,2	72	0,7	6323	1,2
BOTOSANI	82236	0,9	20665	1,2	55933	0,8	66	0,7	5638	1,1
BRASOV	297234	3,3	52445	3,1	233390	3,5	149	1,5	11399	2,3
BRAILA	112194	1,3	22992	1,4	85652	1,3	61	0,6	3550	0,7
BUZAU	162412	1,8	30743	1,8	121238	1,8	146	1,5	10431	2,1
CARAS-SEVERIN	111872	1,3	20733	1,2	82968	1,2	41	0,4	8171	1,6
CALARASI	74932	0,8	16732	1,0	53364	0,8	79	0,8	4836	1,0
CLUJ	395774	4,4	77593	4,6	304805	4,5	197	2,0	13376	2,6
CONSTANTA	391367	4,4	70273	4,2	295228	4,4	926	9,3	25866	5,1
COVASNA	79827	0,9	14352	0,9	61114	0,9	18	0,2	4361	0,9
DAMBOVITA	133842	1,5	31277	1,9	89174	1,3	98	1,0	13391	2,6
DOLJ	245913	2,8	44247	2,6	188959	2,8	215	2,2	12707	2,5
GALATI	242803	2,7	39717	2,4	189190	2,8	125	1,3	13896	2,7
GIURGIU	62108	0,7	13638	0,8	43489	0,6	47	0,5	4981	1,0
GORJ	123571	1,4	19995	1,2	97353	1,4	48	0,5	6223	1,2
HARGHITA	130331	1,5	25809	1,5	99993	1,5	51	0,5	4529	0,9
HUNEDOARA	176266	2,0	34327	2,0	128556	1,9	126	1,3	13383	2,6
IALOMITA	83958	0,9	15637	0,9	62507	0,9	78	0,8	5814	1,1
IASI	300245	3,4	52168	3,1	236371	3,5	597	6,0	11706	2,3
MARAMURES	184430	2,1	43010	2,6	130716	1,9	159	1,6	10704	2,1
MEHEDINTI	90122	1,0	18791	1,1	63416	0,9	55	0,6	7915	1,6
MURES	250410	2,8	42272	2,5	194938	2,9	83	0,8	13200	2,6
NEAMT	189171	2,1	36895	2,2	138117	2,1	304	3,1	14159	2,8
OLT	112917	1,3	23516	1,4	80464	1,2	21	0,2	8937	1,8
PRAHOVA	308956	3,5	55621	3,3	238195	3,5	274	2,8	15140	3,0
SALAJ	76075	0,9	16340	1,0	54983	0,8	29	0,3	4752	0,9
SATU MARE	143675	1,6	28407	1,7	105005	1,6	26	0,3	10263	2,0
SIBIU	193528	2,2	32552	1,9	153464	2,3	31	0,3	7512	1,5
SUCEAVA	226513	2,5	42783	2,5	167473	2,5	29	0,3	16257	3,2
TELEORMAN	95061	1,1	18871	1,1	71683	1,1	49	0,5	4507	0,9
TIMIS	319713	3,6	59028	3,5	244661	3,6	271	2,7	16024	3,2
TULCEA	92424	1,0	17271	1,0	70046	1,0	149	1,5	5107	1,0
VASLUI	98951	1,1	21302	1,3	69214	1,0	197	2,0	8435	1,7
VALCEA	138253	1,6	27637	1,6	102342	1,5	138	1,4	8274	1,6
VRANCEA	111418	1,2	20704	1,2	86252	1,3	51	0,5	4462	0,9
MUN. BUCURESTI	1843715	20,7	318631	19,0	1411821	21,0	2641	26,6	113263	22,4
ILFOV	125586	1,4	27516	1,6	91674	1,4	21	0,2	6396	1,3

*) according to the effect of Law No. 314/2001, art.1 și art. 6

*** Less than 0,01%

Table no. 2

**Operations registered in the Trade Register, by categories
during the period of December 1990 - October 2007, in total by country and counties,
- rate of categories of operations in total operations/country -**

Counties	Total registered operations of		out of which :							
			Registered companies		Changes in statutory documents		out of which : of liquidation, dissolution		Strike off companies	
	No.	%	No.	%	No.	%	No.	%	No.	%
0	1	2	3	4	5	6	7	8	11	12
Total ROMÂNIA	8914756	100,0	1678869	18,8	6729885	75,5	9911	0,1	506002	5,7
ALBA	116051	100,0	26394	22,7	84875	73,1	371	0,3	4782	4,1
ARAD	201986	100,0	41254	20,4	150580	74,5	369	0,2	10152	5,0
ARGES	215915	100,0	43229	20,0	163683	75,8	197	0,1	9003	4,2
BACAU	206715	100,0	42014	20,3	152886	74,0	1003	0,5	11815	5,7
BIHOR	258026	100,0	50975	19,8	192689	74,7	303	0,1	14362	5,6
BISTRITA-NASAUD	108260	100,0	20513	18,9	81424	75,2	72	0,1	6323	5,8
BOTOSANI	82236	100,0	20665	25,1	55933	68,0	66	0,1	5638	6,9
BRASOV	297234	100,0	52445	17,6	233390	78,5	149	0,1	11399	3,8
BRAILA	112194	100,0	22992	20,5	85652	76,3	61	0,1	3550	3,2
BUZAU	162412	100,0	30743	18,9	121238	74,6	146	0,1	10431	6,4
CARAS-SEVERIN	111872	100,0	20733	18,5	82968	74,2	41	0,0	8171	7,3
CALARASI	74932	100,0	16732	22,3	53364	71,2	79	0,1	4836	6,5
CLUJ	395774	100,0	77593	19,6	304805	77,0	197	0,0	13376	3,4
CONSTANTA	391367	100,0	70273	18,0	295228	75,4	926	0,2	25866	6,6
COVASNA	79827	100,0	14352	18,0	61114	76,6	18	0,0	4361	5,5
DAMBOVITA	133842	100,0	31277	23,4	89174	66,6	98	0,1	13391	10,0
DOLJ	245913	100,0	44247	18,0	188959	76,8	215	0,1	12707	5,2
GALATI	242803	100,0	39717	16,4	189190	77,9	125	0,1	13896	5,7
GIURGIU	62108	100,0	13638	22,0	43489	70,0	47	0,1	4981	8,0
GORJ	123571	100,0	19995	16,2	97353	78,8	48	0,0	6223	5,0
HARGHITA	130331	100,0	25809	19,8	99993	76,7	51	0,0	4529	3,5
HUNEDOARA	176266	100,0	34327	19,5	128556	72,9	126	0,1	13383	7,6
IALOMITA	83958	100,0	15637	18,6	62507	74,5	78	0,1	5814	6,9
IASI	300245	100,0	52168	17,4	236371	78,7	597	0,2	11706	3,9
MARAMURES	184430	100,0	43010	23,3	130716	70,9	159	0,1	10704	5,8
MEHEDINTI	90122	100,0	18791	20,9	63416	70,4	55	0,1	7915	8,8
MURES	250410	100,0	42272	16,9	194938	77,8	83	0,0	13200	5,3
NEAMT	189171	100,0	36895	19,5	138117	73,0	304	0,2	14159	7,5
OLT	112917	100,0	23516	20,8	80464	71,3	21	0,0	8937	7,9
PRAHOVA	308956	100,0	55621	18,0	238195	77,1	274	0,1	15140	4,9
SALAJ	76075	100,0	16340	21,5	54983	72,3	29	0,0	4752	6,2
SATU MARE	143675	100,0	28407	19,8	105005	73,1	26	0,0	10263	7,1
SIBIU	193528	100,0	32552	16,8	153464	79,3	31	0,0	7512	3,9
SUCEAVA	226513	100,0	42783	18,9	167473	73,9	29	0,0	16257	7,2
TELEORMAN	95061	100,0	18871	19,9	71683	75,4	49	0,1	4507	4,7
TIMIS	319713	100,0	59028	18,5	244661	76,5	271	0,1	16024	5,0
TULCEA	92424	100,0	17271	18,7	70046	75,8	149	0,2	5107	5,5
VASLUI	98951	100,0	21302	21,5	69214	69,9	197	0,2	8435	8,5
VALCEA	138253	100,0	27637	20,0	102342	74,0	138	0,1	8274	6,0
VRANCEA	111418	100,0	20704	18,6	86252	77,4	51	0,0	4462	4,0
MUN. BUCURESTI	1843715	100,0	318631	17,3	1411821	76,6	2641	0,1	113263	6,1
ILFOV	125586	100,0	27516	21,9	91674	73,0	21	0,0	6396	5,1

*) according to the effect of Law No. 314/2001, art.1 și art. 6

*** Less than 0,01%

Table no.3

**Number and structure of incorporations in the Trade Register, by years,
' 30 October 2007**

Period (year, month)	Registered companies	Percentage	
	No.	%	%
0	1	2	3
Total, 30 September 2007, out of which	1678869	100,00	
Year 1990	81	0,00	
Year 1991	95840	5,71	
Year 1992	137456	8,19	
Year 1993	117078	6,97	
Year 1994	137445	8,19	
Year 1995	65479	3,90	
Year 1996	62089	3,70	
Year 1997	55663	3,32	
Year 1998	63878	3,80	
Year 1999	57197	3,41	
Year 2000	57291	3,41	
Year 2001	61265	3,65	
Year 2002	84780	5,05	
Year 2003	123582	7,36	
Year 2004	144284	8,59	
Year 2005	157375	9,37	
Year 2006	135211	8,05	
Year 2007 (I - XII) out of which :	122875		100,0
January	10979		8,9
February	13249		10,8
March	14721		12,0
April	10908		8,9
May	12749		10,4
June	12463		10,1
July	11670		9,5
August	11841		9,6
September	10950		8,91
October	13345		10,86

Note: Column 2 reveals the annual structure of incorporations; column 3 reveals the structure by months during the current year.

*** Less than 0,01%

Diagram no.1

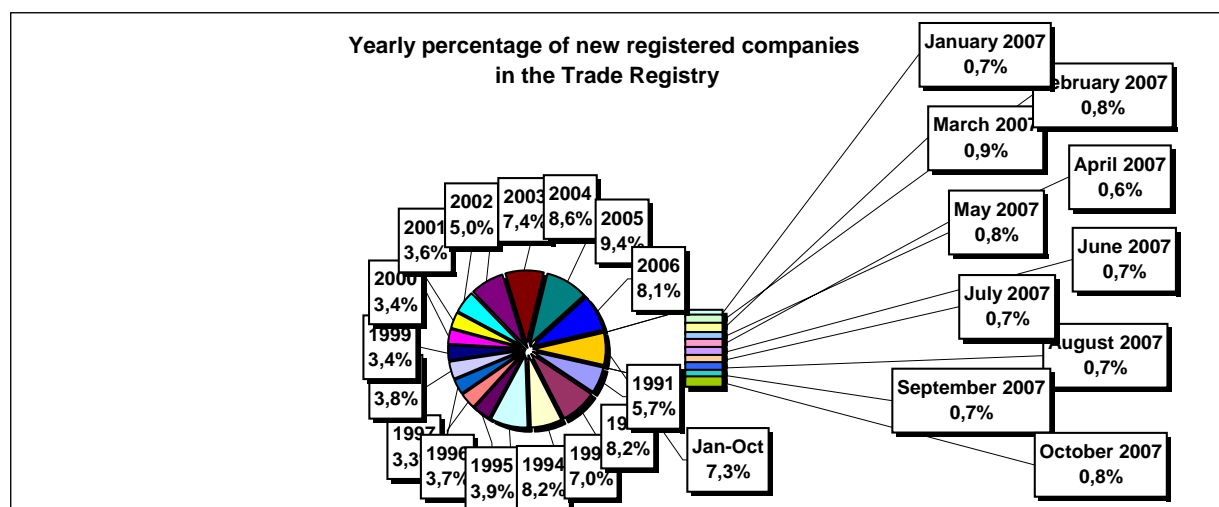


Table no. 4

The number of incorporations in the Trade Register, by counties and sources of capital, in the period December 1990 - October 2007

Counties	Total		out of which:					Ranking by: *	
			Private capital			State majority capital			Mixed capital (state+private)
			out of which:			out of which:			
			PF+AF	Companies	OC	RA	Companies		Companies
No.	%	No.	No.	No.	No.	No.	No.		
0	1	2	3	4	5	6	7	8	9
Total ROMÂNIA	1678869	100,0	433605	1227560	5397	1348	2368	8591	X
ALBA	26394	1,6	9131	16867	141	38	47	170	25
ARAD	41255	2,5	15671	25024	157	27	41	335	15
ARGES	43229	2,6	13877	28974	168	29	29	152	10
BACAU	42014	2,5	13891	27665	158	35	42	223	14
BIHOR	50975	3,0	12093	38329	146	37	62	308	8
BISTRITA-NASAUD	20513	1,2	7259	12999	98	19	29	109	33
BOTOSANI	20665	1,2	9528	10702	122	21	173	119	32
BRASOV	52445	3,1	11047	40982	114	45	87	170	6
BRAILA	22992	1,4	5773	16886	96	28	43	166	28
BUZAU	30743	1,8	9032	21368	142	28	42	131	21
CARAS-SEVERIN	20733	1,2	7172	13222	102	35	65	137	30
CALARASI	16732	1,0	4910	11546	86	18	77	95	38
CLUJ	77593	4,6	19725	57364	150	52	40	262	2
CONSTANTA	70273	4,2	13553	55876	203	51	49	541	3
COVASNA	14352	0,9	4955	9164	68	24	32	109	41
DAMBOVITA	31277	1,9	14163	16723	134	29	75	153	20
DOLJ	44247	2,6	9031	34754	162	40	57	203	9
GALATI	39717	2,4	8062	31296	135	30	51	143	16
GIURGIU	13638	0,8	3261	10056	80	22	109	110	42
GORJ	19995	1,2	4793	14785	184	50	83	100	34
HARGHITA	25809	1,5	10446	14982	86	23	43	229	26
HUNEDOARA	34327	2,0	9011	24821	81	40	92	282	18
IALOMITA	15637	0,9	5946	9465	74	15	46	91	40
IASI	52168	3,1	14392	37164	164	34	70	344	7
MARAMURES	43010	2,6	17238	25449	124	37	39	123	11
MEHEDINTI	18791	1,1	5992	12573	82	19	27	98	36
MURES	42272	2,5	15607	26277	156	30	34	168	13
NEAMT	36895	2,2	13673	22837	161	29	30	165	17
OLT	23516	1,4	9193	13949	161	26	64	123	27
PRAHOVA	55621	3,3	17174	37877	177	50	72	271	5
SALAJ	16340	1,0	6370	9753	107	19	28	63	39
SATU MARE	28407	1,7	9371	18753	88	19	42	134	22
SIBIU	32552	1,9	8010	24123	119	34	108	158	19
SUCEAVA	42783	2,5	20418	21849	202	30	64	220	12
TELEORMAN	18871	1,1	6518	11953	152	21	45	182	35
TIMIS	59028	3,5	9572	48862	140	38	68	348	4
TULCEA	17271	1,0	6009	10924	66	18	42	212	37
VASLUI	21302	1,3	10239	10762	109	16	41	135	29
VALCEA	27637	1,6	10846	16433	168	40	37	113	23
VRANCEA	20704	1,2	6301	14142	104	16	27	114	31
MUN. BUCURESTI	318630	19,0	20860	296298	138	115	103	1116	1
ILFOV	27516	1,6	3492	23732	92	21	13	166	24

*) The total number of incorporations (col 1)

*** Less than 0,01%

Table no. 5

**The number of incorporations in the Trade Register,
by counties and categories, during the period of
December 1990 - October 2007**

County	Total		out of which:						
			PF+AF	companies: 1238519				RA	OC
	SNC	SCS		SRL	SA				
	No.	%	No.	No.	No.	No.	No.	No.	
0	1	2	3	4	5	6	7	8	9
Total ROMÂNIA	1678869	100,0	433605	32661	1575	1171812	32465	1348	5397
ALBA	26394	1,6	9131	890	11	15627	556	38	141
ARAD	41254	2,5	15671	53	11	24657	677	27	157
ARGES	43229	2,6	13877	107	15	28213	820	29	168
BACAU	42014	2,5	13891	1299	4	25899	727	35	158
BIHOR	50975	3,0	12093	126	47	37625	901	37	146
BISTRITA-NASAUD	20513	1,2	7259	146	21	12554	416	19	98
BOTOSANI	20665	1,2	9528	468	1	10073	452	21	122
BRASOV	52445	3,1	11047	239	20	40129	851	45	114
BRAILA	22992	1,4	5773	376	12	16190	517	28	96
BUZAU	30743	1,8	9032	3747	46	17177	571	28	142
CARAS-SEVERIN	20733	1,2	7172	117	8	12834	465	35	102
CALARASI	16732	1,0	4910	609	3	10754	352	18	86
CLUJ	77593	4,6	19725	2112	18	54255	1281	52	150
CONSTANTA	70273	4,2	13553	311	23	54656	1476	51	203
COVASNA	14352	0,9	4955	148	4	8856	297	24	68
DAMBOVITA	31277	1,9	14163	60	8	16395	488	29	134
DOLJ	44247	2,6	9031	1560	8	32565	881	40	162
GALATI	39717	2,4	8062	1574	6	29069	841	30	135
GIURGIU	13638	0,8	3261	35	8	9908	324	22	80
GORJ	19995	1,2	4793	29	1	14449	489	50	184
HARGHITA	25809	1,5	10446	62	6	14698	488	23	86
HUNEDOARA	34327	2,0	9011	1166	98	23258	673	40	81
IALOMITA	15637	0,9	5946	266	11	8981	344	15	74
IASI	52168	3,1	14392	507	111	35953	1005	34	164
MARAMURES	43010	2,6	17238	1927	23	23068	592	37	124
MEHEDINTI	18791	1,1	5992	427	3	11940	328	19	82
MURES	42272	2,5	15607	37	34	25744	664	30	156
NEAMT	36895	2,2	13673	3293	30	19040	669	29	161
OLT	23516	1,4	9193	1611	1	12034	490	26	161
PRAHOVA	55621	3,3	17174	3122	14	34186	898	50	177
SALAJ	16340	1,0	6370	600	4	8948	292	19	107
SATU MARE	28407	1,7	9371	283	6	18169	471	19	88
SIBIU	32552	1,9	8010	777	48	22906	658	34	119
SUCEAVA	42783	2,5	20418	438	8	21104	583	30	202
TELEORMAN	18871	1,1	6518	272	399	11095	414	21	152
TIMIS	59028	3,5	9572	611	29	47389	1249	38	140
TULCEA	17271	1,0	6009	1363	114	9225	476	18	66
VASLUI	21302	1,3	10239	90	12	10426	410	16	109
VALCEA	27637	1,6	10846	364	6	15727	486	40	168
VRANCEA	20704	1,2	6301	356	10	13469	448	16	104
MUN. BUCURESTI	318631	19,0	20860	1034	302	289345	6836	115	138
ILFOV	27516	1,6	3492	49	31	23222	609	21	92

Table no. 6

**The number of incorporations in the Trade Register, by field of activity*
during the period of December 1990 - October 2007**

CAEN segment	Field of activity	Total		out of which:						
				PF+AF	companies: 1238519				RA	OC
		No.	%		SNC	SCS	SRL	SA		
				No.	No.	No.	No.	No.	No.	
0	1	2	3	4	5	6	7	8	9	10
	Total ROMANIA	1678869	100,0	433605	32661	1575	1171812	32465	1348	5397
1	Agriculture, hunting and related service activities	66588	4,0	17433	2024	44	43124	3793	53	117
2	Forestry, logging and related service activities	8895	0,5	1178	152	3	7236	222	96	8
5	Fishing, fish farming and related service activities	3540	0,2	2113	17	3	1353	54		
10	Mining of coal and lignite; extraction of peat	125	0,0	2			87	32	4	
11	Extraction of crude petroleum and natural gas; service activities incidental to oil and gas extraction, excluding surveying	367	0,0	23	1		172	125	46	
12	Mining of uranium and thorium ores	133	0,0	32			95	6		
13	Mining of metal ores	540	0,0	163			314	55	8	
14	Other mining and quarrying	1788	0,1	110	9	1	1494	171	2	1
15	Manufacture of food products and beverages	74440	4,4	14923	3260	149	53992	1863	5	248
16	Manufacture of tobacco products	292	0,0	47			213	31	1	
17	Manufacture of textiles	11962	0,7	2443	556	16	8396	406		145
18	Manufacture of wearing apparel; dressing and dyeing of fur	21573	1,3	4956	875	38	15039	359	1	305
19	Tanning and dressing of leather; manufacture of luggage, handbags, saddlery, harness and footwear	5484	0,3	936	112	6	4255	123	1	51
20	Manufacture of wood and of products of wood and cork, except furniture; manufacture of articles of straw and plaiting materials	26054	1,6	9320	575	29	15580	499	9	42
21	Manufacture of pulp, paper and paper products	1863	0,1	129	21	1	1601	98		13
22	Publishing, printing and reproduction of recorded media	12393	0,7	1002	317	22	10620	408	14	10
23	Manufacture of coke, refined petroleum products and nuclear fuel	267	0,0	25			206	34	2	
24	Manufacture of chemicals and chemical products	3807	0,2	121	89	1	3204	380	6	6
25	Manufacture of rubber and plastic products	6602	0,4	591	314	7	5402	263		24
26	Manufacture of other non-metallic mineral products	9856	0,6	3036	212	6	6191	392	5	14
27	Manufacture of basic metals	2485	0,1	175	39	3	2050	208	3	7
28	Manufacture of fabricated metal products, except machinery and equipment	18483	1,1	4659	361	23	12641	726	11	62
29	Manufacture of machinery and equipment n.e.c.	3950	0,2	113	44	7	3340	422	19	5
30	Manufacture of office machinery and computers	1798	0,1	16	25	4	1673	80		
31	Manufacture of electrical machinery and apparatus n.e.c.	2009	0,1	112	44	6	1697	144		6
32	Manufacture of radio, television and communication equipment and apparatus	897	0,1	66	14	4	739	73		1
33	Manufacture of medical, precision and optical instruments, watches and clocks	2784	0,2	662	17	2	1993	106		4
34	Manufacture of motor vehicles, trailers and semi-trailers	949	0,1	31	31	3	756	126		2
35	Manufacture of other transport equipment	2067	0,1	302	86	7	1472	125	73	2
36	Manufacture of furniture; manufacturing n.e.c.	16389	1,0	4674	284	16	10914	338	5	158
37	Recycling	5254	0,3	452	51	5	4570	175		1
40	Electricity, gas, steam and hot water supply	3156	0,2	839	3	1	1676	548	89	
41	Collection, purification and distribution of water	3601	0,2	1637	2		1666	223	73	
45	Construction	112491	6,7	28992	611	44	80248	2465	54	77

*)Field of activity declared when registered, according to CAEN classification

Table no. 6
(continuing)

**The number of incorporations in the Trade Register, by field of activity*
and categories, during the period of December 1990 - October 2007**

CAEN segment	Field of activity	Total		out of which:						RA	OC
				PF+AF	companies: 1238519						
					SNC	SCS	SRL	SA			
					No.	No.	No.	No.			
0	1	2	3	4	5	6	7	8	9	10	
	Total ROMÂNIA	1678869	100,0	433605	32661	1575	1171812	32465	1348	5397	
50	Sale, maintenance and repair of motor vehicles and motorcycles; retail sale of automotive fuel	57153	3,4	9108	1244		45692	1027	6	42	
51	Wholesale trade and commission trade, except of motor vehicles and motorcycles	213593	12,7	19835	4525	152	185441	3323	35	282	
52	Retail trade, except of motor vehicles and motorcycles; repair of personal and household goods	520151	31,0	185208	11916	559	317577	2499	6	2385	
55	Hotels and restaurants	64569	3,8	15151	1636	126	46695	793	73	95	
60	Land transport; transport via pipelines	88785	5,3	38072	845	37	48727	1061	33	10	
61	Water transport	902	0,1	176	82	8	501	64	70	1	
62	Air transport	314	0,0	18			236	50	10		
63	Supporting and auxiliary transport activities; activities of travel agencies	11253	0,7	785	220	14	9684	443	96	11	
64	Post and telecommunications	8190	0,5	998	11	1	6859	307	11	3	
65	Financial intermediation, except insurance and pension funding	6916	0,4	152	15		3126	2588	2	1033	
66	Insurance and pension funding, except compulsory social security	2099	0,1	622	1		519	956		1	
67	Activities auxiliary to financial intermediation	7884	0,5	1348	7	2	6224	295		8	
70	Real estate activities	29652	1,8	827	30	9	28056	706	17	7	
71	Renting of machinery and equipment without operator and of personal and household goods	4025	0,2	744	116	8	2986	100	70	1	
72	Computer and related activities	27010	1,6	6316	120	13	20170	386	2	3	
73	Research and development	1848	0,1	263	11	2	1354	173	43	2	
74	Other business activities	125693	7,5	26914	796	78	96038	1700	106	60	
75	Public administration and defence; compulsory social security	369	0,0	93	5		222	26	22	1	
80	Education	8200	0,5	4292	62	6	3774	66			
85	Health and social work	17203	1,0	2173	233	16	14692	85	3	1	
90	Sewage and refuse disposal, sanitation and similar activities	1067	0,1	111	13	2	810	111	18		
91	Activities of membership organizations n.e.c.	218	0,0	96	1		103	15		3	
92	Recreational, cultural and sporting activities	18719	1,1	5263	202	14	12853	306	69	12	
93	Other service activities	29065	1,7	12977	418	42	15118	307	76	126	
95	Activities of households as employers of domestic staff	1021	0,1	685	6	1	325	3		1	
96	Extra-territorial organizations and bodies	11	0,0	11							

*)Field of activity declared when registered, according to CAEN classification

Table no. 7

**Operations carried on with the Trade Registers,
by counties and categories,
in October 2007**

County	Total of operations carried on		out of which:							
			New incorporations		Changes in statutory documents		out of which: of liquidation, dissolution		Strike off companies	
	No.	%	No.	%	No.	%	No.	%	No.	%
0	1	2	3	4	5	6	7	8	9	10
Total ROMÂNIA	105759	100,0	13345	12,6	89859	85,0	2320	2,2	2555	2,4
ALBA	847	100,0	228	26,9	576	68,0	26	3,1	43	5,1
ARAD	1468	100,0	329	22,4	1109	75,5	19	1,3	30	2,0
ARGES	1704	100,0	321	18,8	1330	78,1	19	1,1	53	3,1
BACAU	1224	100,0	313	25,6	873	71,3	80	6,5	38	3,1
BIHOR	1359	100,0	480	35,3	817	60,1	33	2,4	62	4,6
BISTRITA-NASAUD	907	100,0	148	16,3	633	69,8	24	2,6	126	13,9
BOTOSANI	638	100,0	158	24,8	463	72,6			17	2,7
BRASOV	2477	100,0	497	20,1	1915	77,3	57	2,3	65	2,6
BRAILA	1910	100,0	138	7,2	1748	91,5	8	0,4	24	1,3
BUZAU	936	100,0	225	24,0	660	70,5	79	8,4	51	5,4
CARAS-SEVERIN	743	100,0	188	25,3	526	70,8	13	1,7	29	3,9
CALARASI	325	100,0	91	28,0	227	69,8	2	0,6	7	2,2
CLUJ	3150	100,0	673	21,4	2431	77,2	69	2,2	46	1,5
CONSTANTA	3565	100,0	466	13,1	2717	76,2	135	3,8	382	10,7
COVASNA	409	100,0	118	28,9	281	68,7	19	4,6	10	2,4
DAMBOVITA	871	100,0	209	24,0	624	71,6	22	2,5	38	4,4
DOLJ	16385	100,0	296	1,8	15897	97,0	41	0,3	192	1,2
GALATI	1626	100,0	343	21,1	1249	76,8	20	1,2	34	2,1
GIURGIU	1544	100,0	118	7,6	1403	90,9	1	0,1	23	1,5
GORJ	5947	100,0	134	2,3	5769	97,0	50	0,8	44	0,7
HARGHITA	985	100,0	249	25,3	707	71,8	26	2,6	29	2,9
HUNEDOARA	1577	100,0	246	15,6	1311	83,1	242	15,3	20	1,3
IALOMITA	429	100,0	106	24,7	305	71,1	94	21,9	18	4,2
IASI	2696	100,0	505	18,7	2112	78,3	158	5,9	79	2,9
MARAMURES	1592	100,0	238	14,9	1253	78,7	211	13,3	101	6,3
MEHEDINTI	397	100,0	127	32,0	255	64,2	28	7,1	15	3,8
MURES	14612	100,0	308	2,1	14238	97,4	26	0,2	66	0,5
NEAMT	1234	100,0	200	16,2	1000	81,0	18	1,5	34	2,8
OLT	760	100,0	115	15,1	617	81,2	9	1,2	28	3,7
PRAHOVA	2431	100,0	480	19,7	1844	75,9	115	4,7	107	4,4
SALAJ	571	100,0	151	26,4	387	67,8	34	6,0	33	5,8
SATU MARE	1268	100,0	258	20,3	795	62,7	30	2,4	215	17,0
SIBIU	1296	100,0	269	20,8	997	76,9	11	0,8	30	2,3
SUCEAVA	1489	100,0	257	17,3	1185	79,6	54	3,6	47	3,2
TELEORMAN	486	100,0	120	24,7	287	59,1	1	0,2	79	16,3
TIMIS	1670	100,0	555	33,2	1071	64,1	26	1,6	44	2,6
TULCEA	4799	100,0	159	3,3	4621	96,3	5	0,1	19	0,4
VASLUI	1489	100,0	134	9,0	1310	88,0	43	2,9	45	3,0
VALCEA	785	100,0	177	22,5	571	72,7	20	2,5	37	4,7
VRANCEA	793	100,0	142	17,9	612	77,2	48	6,1	39	4,9
MUN. BUCURESTI	14267	100,0	2681	18,8	11458	80,3	372	2,6	128	0,9
ILFOV	2098	100,0	395	18,8	1675	79,8	32	1,5	28	1,3

*) by effect of implementation of Law no. 314/2001, art.1 and art. 6

*** Less than 0,01%

Table no. 8

**The number of incorporations in the Trade Register,
by counties and sources of capital,
in October 2007**

County	Total		out of which:					Rnking by: *	
			Private capital			State majority capital			Mixed capital (state+priva)
			out of which:			out of which:			
			PF+AF	Companies	OC	RA	Companie s		Companie s
No.	%	No.	No.	No.	No.	No.	No.		
0	1	2	3	4	5	6	7	8	9
Total ROMÂNIA	13345	100,0	3711	9632			1	1	X
ALBA	228	1,7	72	156					22
ARAD	329	2,5	102	227					11
ARGES	321	2,4	53	268					12
BACAU	313	2,3	96	217					13
BIHOR	480	3,6	208	272					6
BISTRITA-NASAUD	148	1,1	38	110					31
BOTOSANI	158	1,2	85	72			1		29
BRASOV	497	3,7	170	327					5
BRAILA	138	1,0	35	103					33
BUZAU	225	1,7	68	157					23
CARAS-SEVERIN	188	1,4	81	107					26
CALARASI	91	0,7	27	64					42
CLUJ	673	5,0	195	478					2
CONSTANTA	466	3,5	83	383					8
COVASNA	118	0,9	60	58					38
DAMBOVITA	209	1,6	66	143					24
DOLJ	296	2,2	88	208					15
GALATI	343	2,6	115	228					10
GIURGIU	118	0,9	35	83					39
GORJ	134	1,0	48	86					34
HARGHITA	249	1,9	144	105					19
HUNEDOARA	246	1,8	65	181					20
IALOMITA	106	0,8	28	78					41
IASI	505	3,8	138	367					4
MARAMURES	238	1,8	48	190					21
MEHEDINTI	127	1,0	42	85					36
MURES	308	2,3	101	207					14
NEAMT	200	1,5	54	146					25
OLT	115	0,9	24	91					40
PRAHOVA	480	3,6	137	343					7
SALAJ	151	1,1	69	82					30
SATU MARE	258	1,9	98	160					17
SIBIU	269	2,0	97	172					16
SUCEAVA	257	1,9	92	165					18
TELEORMAN	120	0,9	38	82					37
TIMIS	555	4,2	98	457					3
TULCEA	159	1,2	87	72					28
VASLUI	134	1,0	52	82					35
VALCEA	177	1,3	51	126					27
VRANCEA	142	1,1	39	103					32
MUN. BUCURESTI	2681	20,1	436	2245					1
ILFOV	395	3,0	48	346				1	9

*) The total number of incorporations (col 1)

*** Less than 0,01%

Table no.9

**The number of incorporations in the Trade Register,
by counties and category
in October 2007**

County	Total		out of which:						RA	OC
			PF+AF	companies: 9634						
	No.	%		No.	SNC	SCS	SRL	SA	No.	No.
			No.		No.	No.	No.			
0	1	2	3	4	5	6	7	8	9	
Total ROMÂNIA	13345	100,0	3711	4	3	9541	86			
ALBA	228	1,7	72			155	1			
ARAD	329	2,5	102			227				
ARGES	321	2,4	53			267	1			
BACAU	313	2,3	96			215	2			
BIHOR	480	3,6	208			269	3			
BISTRITA-NASAUD	148	1,1	38			108	2			
BOTOSANI	158	1,2	85			72	1			
BRASOV	497	3,7	170			324	3			
BRAILA	138	1,0	35			102	1			
BUZAU	225	1,7	68			156	1			
CARAS-SEVERIN	188	1,4	81			106	1			
CALARASI	91	0,7	27			63	1			
CLUJ	673	5,0	195			468	10			
CONSTANTA	466	3,5	83			380	3			
COVASNA	118	0,9	60			58				
DAMBOVITA	209	1,6	66			142	1			
DOLJ	296	2,2	88			207	1			
GALATI	343	2,6	115			226	2			
GIURGIU	118	0,9	35			82	1			
GORJ	134	1,0	48			86				
HARGHITA	249	1,9	144			103	2			
HUNEDOARA	246	1,8	65			179	2			
IALOMITA	106	0,8	28			78				
IASI	505	3,8	138	1		363	3			
MARAMURES	238	1,8	48			190				
MEHEDINTI	127	1,0	42			85				
MURES	308	2,3	101			207				
NEAMT	200	1,5	54			144	2			
OLT	115	0,9	24			90	1			
PRAHOVA	480	3,6	137			339	4			
SALAJ	151	1,1	69			82				
SATU MARE	258	1,9	98			160				
SIBIU	269	2,0	97			169	3			
SUCEAVA	257	1,9	92			165				
TELEORMAN	120	0,9	38			81	1			
TIMIS	555	4,2	98	2		453	2			
TULCEA	159	1,2	87			70	2			
VASLUI	134	1,0	52			76	6			
VALCEA	177	1,3	51			125	1			
VRANCEA	142	1,1	39			103				
MUN. BUCURESTI	2681	20,1	436	1	3	2221	20			
ILFOV	395	3,0	48			345	2			

Table no. 10

**The number of incorporations in the Trade Register, by field of activity*
and categories in October 2007**

CAEN segment	Field of activity	Total		out of which:						RA	OC
				PF+AF	companies: 9634						
		SNC	SCS		SRL	SA	No.	No.			
		No.	%	No.	No.	No.			No.	No.	No.
0	1	2	3	4	5	6	7	8	9	10	
	Total ROMÂNIA	13345	100,0	3711	4	3	9541	86			
1	Agriculture, hunting and related service activities	244	1,8	109			134	1			
2	Forestry, logging and related service activities	49	0,4	6			43				
5	Fishing, fish farming and related service activities	131	1,0	117			14				
10	Mining of coal and lignite; extraction of peat	2	0,0				2				
11	Extraction of crude petroleum and natural gas; service activities incidental to oil and gas extraction, excluding surveying	2	0,0	1			1				
12	Mining of uranium and thorium ores										
13	Mining of metal ores										
14	Other mining and quarrying	26	0,2				25	1			
15	Manufacture of food products and beverages	109	0,8	52			55	2			
16	Manufacture of tobacco products										
17	Manufacture of textiles	16	0,1	3			13				
18	Manufacture of wearing apparel; dressing and dyeing of fur	77	0,6	27			50				
19	Tanning and dressing of leather; manufacture of luggage, handbags, saddlery, harness and footwear	27	0,2	4			23				
20	Manufacture of wood and of products of wood and cork, except furniture; manufacture of articles of straw and plaiting materials	87	0,7	28			59				
21	Manufacture of pulp, paper and paper products	6	0,0				6				
22	Publishing, printing and reproduction of recorded media	66	0,5	4			61	1			
23	Manufacture of coke, refined petroleum products and nuclear fuel	2	0,0				2				
24	Manufacture of chemicals and chemical products	8	0,1	1			7				
25	Manufacture of rubber and plastic products	48	0,4	3			44	1			
26	Manufacture of other non-metallic mineral products	51	0,4	14			37				
27	Manufacture of basic metals	6	0,0				6				
28	Manufacture of fabricated metal products, except machinery and equipment	137	1,0	37			100				
29	Manufacture of machinery and equipment n.e.c.	9	0,1				9				
30	Manufacture of office machinery and computers	4	0,0				4				
31	Manufacture of electrical machinery and apparatus n.e.c.	5	0,0				5				
32	Manufacture of radio, television and communication equipment and apparatus	3	0,0				3				
33	Manufacture of medical, precision and optical instruments, watches and clocks	26	0,2	6			20				
34	Manufacture of motor vehicles, trailers and semi- trailers	5	0,0				5				
35	Manufacture of other transport equipment	20	0,1	2			18				
36	Manufacture of furniture; manufacturing n.e.c.	97	0,7	28			69				
37	Recycling	27	0,2				27				
40	Electricity, gas, steam and hot water supply	31	0,2				30	1			
41	Collection, purification and distribution of water	5	0,0				2	3			
45	Construction	1805	13,5	298			1505	2			

Table no. 10
(continuance)

**The number of incorporations in the Trade Register, by field of activity*
and categories in October 2007**

CAEN segment	Field of activity	Total		out of which:						
				PF+AF	companies: 9634				RA	OC
		No.	%		No.	SNC	SCS	SRL		
				No.		No.	No.	No.	No.	No.
0	1	2	3	4	5	6	7	8	9	10
	Total ROMÂNIA	13345	100,0	3711	4	3	9541	86		
50	Sale, maintenance and repair of motor vehicles and motorcycles; retail sale of automotive fuel	305	2,3	45			260			
51	Wholesale trade and commission trade, except of motor vehicles and motorcycles	1231	9,2	210	1	1	1017	2		
52	Retail trade, except of motor vehicles and motorcycles; repair of personal and household goods	2373	17,8	816	1	1	1554	1		
55	Hotels and restaurants	458	3,4	65	1		389	3		
60	Land transport; transport via pipelines	1182	8,9	521			660	1		
61	Water transport									
62	Air transport	1	0,0				1			
63	Supporting and auxiliary transport activities; activities of travel agencies	101	0,8	3			97	1		
64	Post and telecommunications	91	0,7	28			63			
65	Financial intermediation, except insurance and pension funding	60	0,4				23	37		
66	Insurance and pension funding, except compulsory social security	6	0,0	3			1	2		
67	Activities auxiliary to financial intermediation	152	1,1	18			133	1		
70	Real estate activities	805	6,0	12			772	21		
71	Renting of machinery and equipment without operator and of personal and household goods	51	0,4	6			45			
72	Computer and related activities	438	3,3	204			233	1		
73	Research and development	13	0,1	1			12			
74	Other business activities	1970	14,8	577	1	1	1389	2		
75	Public administration and defence; compulsory social security									
80	Education	200	1,5	141			59			
85	Health and social work	134	1,0	6			128			
90	Sewage and refuse disposal, sanitation and similar activities	19	0,1	1			17	1		
91	Activities of membership organizations n.e.c.	2	0,0	1			1			
92	Recreational, cultural and sporting activities	230	1,7	57			172	1		
93	Other service activities	365	2,7	230			135			
95	Activities of households as employers of domestic staff	26	0,2	25			1			
96	Extra-territorial organizations and bodies									

*)Field of activity declared when registered, according to CAEN classification

Table no. 11

**Number of companies registered and the amount
of subscribed capital, by county in October 2007**

County	Total registered companies		Subscribed capital		Average subscribed capital on company
	No.	%	thousand RONI	%	thousand RONI
0	1	2	3	4	5
Total ROMÂNIA	9634	100,0	144362,8	100,0	15,1
ALBA	156	1,6	169,2	0,1	1,1
ARAD	227	2,4	3528,3	2,4	15,5
ARGES	268	2,8	764,1	0,5	2,9
BACAU	217	2,3	205,8	0,1	1,0
BIHOR	272	2,8	1919,3	1,3	7,2
BISTRITA-NASAUD	110	1,1	1161,3	0,8	10,7
BOTOSANI	73	0,8	6420,9	4,4	88,0
BRASOV	327	3,4	2473,3	1,7	7,6
BRAILA	103	1,1	254,0	0,2	2,5
BUZAU	157	1,6	601,2	0,4	3,9
CARAS-SEVERIN	107	1,1	97,8	0,1	0,9
CALARASI	64	0,7	39,5	0,0	0,6
CLUJ	478	5,0	72106,3	49,9	152,8
CONSTANTA	383	4,0	1437,4	1,0	3,8
COVASNA	58	0,6	33,8	0,0	0,6
DAMBOVITA	143	1,5	182,1	0,1	1,3
DOLJ	208	2,2	261,4	0,2	1,3
GALATI	228	2,4	320,3	0,2	1,4
GIURGIU	83	0,9	29,3	0,0	0,4
GORJ	86	0,9	91,4	0,1	1,1
HARGHITA	105	1,1	138,4	0,1	1,4
HUNEDOARA	181	1,9	1714,0	1,2	9,7
IALOMITA	78	0,8	50,9	0,0	0,7
IASI	367	3,8	1187,8	0,8	3,3
MARAMURES	190	2,0	132,1	0,1	0,7
MEHEDINTI	85	0,9	31,0	0,0	0,4
MURES	207	2,1	151,0	0,1	0,7
NEAMT	146	1,5	320,5	0,2	2,2
OLT	91	0,9	78,7	0,1	0,9
PRAHOVA	343	3,6	2589,7	1,8	7,6
SALAJ	82	0,9	208,7	0,1	2,5
SATU MARE	160	1,7	3495,9	2,4	21,8
SIBIU	172	1,8	627,5	0,4	3,7
SUCEAVA	165	1,7	122,4	0,1	0,7
TELEORMAN	82	0,9	44,3	0,0	0,5
TIMIS	457	4,7	2272,6	1,6	5,0
TULCEA	72	0,7	136,5	0,1	1,9
VASLUI	82	0,9	179,6	0,1	2,4
VALCEA	126	1,3	82,5	0,1	0,7
VRANCEA	103	1,1	37,0	0,0	0,4
MUN. BUCURESTI	2245	23,3	18294,8	12,7	8,2
ILFOV	347	3,6	20370,3	14,1	58,9

Note: The average does not include filials because according to the Law no.31/1990 they are not juridical persons

*** Less than 0,01%

Table no. 12

**Number of registered companies and the amount
of subscribed capital by category,
in October 2007**

Company type	Total registered companies		Subscribed capital		Average subscribed capital on company
	No.	%	thousand RONI	%	thousand RONI
0	1	2	3	4	5
Total ROMÂNIA	9634	100,0	144362,8	100,0	15,1
SNC	4	0,0	329,2	0,2	82,3
SCS	3	0,0	653,5	0,5	217,8
SA	86	0,9	81649,4	56,6	3140,4
SRL	9541	99,0	61730,7	42,8	6,5
SCA					

Note: The average does not include filials because according to the Law no.31/1990 they are not juridical persons

*** Less than 0,01%

Diagram no.5

