



MINISTRY OF JUSTICE

THE NATIONAL TRADE REGISTER OFFICE

București, Bd. Unirii nr. 74, Bl. J3b, tronson II+III, sector 3; Telefon: +40 21 316.08.04, 316.08.10; Fax: +40 21 316.08.03 Cod poștal: 030837
Website: www.onrc.ro; E-mail: onrc@onrc.ro; Cod de identificare Fiscală: 14942091

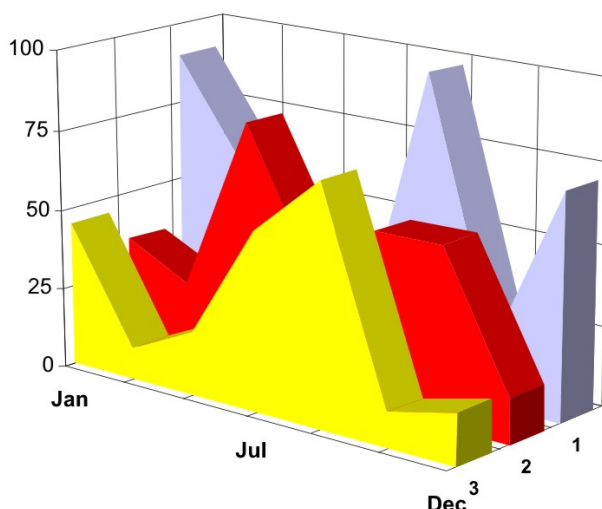
PROCEEDINGS IN THE CENTRAL TRADE REGISTER

STATISTICAL SYNTHESIS

OF

RECORDS IN THE CENTRAL TRADE REGISTER

- the 30th of September 2007 - provisional data -



- ISSUE No. 190 -

**MINISTRY OF JUSTICE
THE NATIONAL TRADE REGISTER OFFICE**

- Operations of incorporation of companies, changes in statutory documents and strike-off of companies are based on Law No.26/1990 reissued, Law No.31/1990, reissued, OUG No.76/2001, reissued and Methodology Norms No. P/608/1998.

- This paper presents the trend in operations registered in The Trade Register Office attached to the law court of Bucharest and in the Trade Register Offices attached to the law court in each county of Romania.

- Information recorded in the Central Trade Register concern operations compulsory by law to be registered in the trade registers within the 42 trade register offices attached to the law courts.

• No part of the content of this publication, in original or in any modified format, September be reproduced, stored in a retrieval system, or transmitted, in any form or by any means, without the prior permission in writing of The Ministry of Justice – The National Trade Register Office.

• The content of this publication September be referred to in articles, studies, books, as supporting or explanatory data under the condition only, the source of the information to be clearly and precisely specified.

1	Explanatory Note	1
2.1	Data for December 1990 –September 2007	3
	Table no.1 – Operations registered in the Trade Register, by categories during the period of December 1990 –September 2007, in total by country and counties, rate of categories of operations in total operations country	3
	Table no.1.a – Operations registered in the Trade Register, by categories during the period of December 1990 –September 2007, in total by country and counties, counties’ rate in total country	4
	Table no. 3 – Number and structure of incorporations in the Trade Register, by years, during the period of December 1990-September 2007	5
	Table no.4 – The number of incorporations in the Trade Register, by counties and sources of capital, in the period December 1990 -September 2007	6
	Table no. 5 – The number of incorporations in the Trade Register, by counties and categories, during the period of December 1990 –September 2007	7
	Table no. 6 – The number of incorporations in the Trade Register, by field of activity and categories, during the period of December 1990 -September 2007	8
2.2	Data for September 2007	10
	Table no. 7 – Operations carried on with the Trade Registers, by counties and categories, in September 2007	10
	Table no. 8 – The number of incorporations in the Trade Register, by counties and sources of capital, in September 2007	11
	Table no. 9 – The number of incorporations in the Trade Register, by counties and category in September 2007	12
	Table no. 10 –The number of incorporations in the Trade Register, by field of activity and categories in September 2007	13
	Table no. 11 – Number of companies registered and the amount of subscribed capital, by county in September 2007	15
	Table no. 12– Number of registered companies and the amount of subscribed capital by category, in September 2007	16
	Diagram no. 5 – Average subscribed capital on company in September 2007	16

Explanatory Note

The Trade Register Office is set-up by Law No. 26/1990, reissued and modified by OUG No. 129/2002, became an active institution since December 1990 and is structured in two levels:

- the national level, represented by the National Trade Register Office organised under the Ministry of Justice
- the local level, represented by the 42 trade register offices attached to the law courts and co-ordinated by the National Trade Register Office

The categories of businessmen compulsory to register in the trade register are:

- natural persons tradesmen and family associations doing usually commercial acts, commercial companies, national companies, companies under state supervision, and co-operative organisations
- subsidiaries registered as commercial companies and legal persons following the legal proceedings of set-up, activity and incorporation according to the type of the legally set-up company.

Usual Terms:

- incorporation – represents the registration of the company in the trade registry awarding the quality of legal person.

- other statutory documents – represent the official registration of the changes occurred in a company's life, such as: changes in headquarters' address, increase or decrease of the issued capital, merger, liquidation, strike-off, etc.

- strike-off – represents the removal of a company from the trade registry, due to dissolution and liquidation, being also the very moment the company loses its quality of legal person. Data also include the companies under the provisions of Law No. 314/2001.

- change of certificate – represents the obligation of companies set-up before OGU No. 76/2001 republished came in force, to request the incorporation certificate and fiscal registration certificate to be replaced with the new registration certificate containing the given unique registration code.

The ratio of these changes is being calculated as a proportion between the effective number of changes and the number of active companies due to operate the change.

- active company from the legal point of view – a company registered in the trade register and which is not affected by any of the situations leading to the temporary or permanent loss of this status (e.g. dissolution, liquidation, strike-off)

- operations represent all the records in the trade registry including incorporations, other statutory documents and strike-off of companies, irrespective of the object of activity, company's type and origin of the subscribed capital (local or foreign investment).

• **Terms used in tables and charts**

➤ **Number of companies:** represents, depending on the specific table, the number of companies incorporated in the related period, the number of companies being struck-off from the trade registry.

➤ **Amount of the subscribed capital:**

- **total, in local currency:** the amount of the subscribed capital resulted from totalising the amount subscribed (in cash and in kind) in local currency (ROL)

➤ **Regional development:**

<i>North-East:</i>	Suceava, Botoșani, Neamț, Iași, Bacău, Vaslui.
<i>South-East:</i>	Vrancea, Galați, Buzău, Brăila, Tulcea, Constanța.
<i>South-Muntenia:</i>	Argeș, Dâmbovița, Prahova, Teleorman, Giurgiu, Călărași, Ialomița.
<i>South-West Oltenia:</i>	Gorj, Vâlcea, Dolj, Mehedinți, Olt.
<i>West:</i>	Arad, Caraș-Severin, Hunedoara, Timiș.
<i>North-West:</i>	Bihor, Bistrița, Cluj, Satu Mare, Sălaj, Maramureș.
<i>Center:</i>	Alba, Brașov, Covasna, Harghita, Mureș, Sibiu.
<i>Bucharest-Ilfov:</i>	București, Ilfov.

CAEN code – The Classification of Activities in the National Economy was approved by HG No. 656/1997, modified by Order No 601 of the President of National Institute of Statistics being compatible with the international classification used in statistic reports and official documents. Activities are ranked upon homogeneity principle by sections, divisions, groups and classes.

Common abbreviations

- **PF** - Natural Persons Tradesman
- **AF** - Family association
- **SNC** - General Partnership
- **SCS** - Limited Partnership
- **SA** - Joint stock company
- **SRL** - Limited liability company
- **RA** - Company Under State Supervision
- **OC** - Co-operative organisation

Source:

The integrated IT system of the trade registry is designed by The National Trade Registry Office according to the provisions of the related legislation in force. The source of information is the computerised system of the trade registers handled by the Trade Register Offices attached to the law courts.

Table no. 1

**Operations registered in the Trade Register, by categories
during the period of December 1990 - September 2007 in total by country and counties,
- rate of categories of operations in total operations/country -**

Counties	Total of registered operations		out of which :							
			Registered companies		Changes in statutory documents		out of which : of liquidation, dissolution		Strike off companies	
	No.	%	No.	%	No.	%	No.	%	No.	%
0	1	2	3	4	5	6	7	8	11	12
Total ROMÂNIA	8819106	100,0	1665524	100,0	6650648	100,0	9911	100,0	502934	100,0
ALBA	115002	1,3	26166	1,6	84096	1,3	371	3,7	4740	0,9
ARAD	199914	2,3	40925	2,5	148904	2,2	369	3,7	10085	2,0
ARGES	214168	2,4	42908	2,6	162327	2,4	197	2,0	8933	1,8
BACAU	205219	2,3	41701	2,5	151752	2,3	1003	10,1	11766	2,3
BIHOR	255570	2,9	50495	3,0	190788	2,9	303	3,1	14287	2,8
BISTRITA-NASAUD	107369	1,2	20365	1,2	80763	1,2	72	0,7	6241	1,2
BOTOSANI	81645	0,9	20507	1,2	55544	0,8	66	0,7	5594	1,1
BRASOV	294395	3,3	51948	3,1	231242	3,5	149	1,5	11205	2,2
BRAILA	111114	1,3	22854	1,4	84787	1,3	61	0,6	3473	0,7
BUZAU	161277	1,8	30518	1,8	120383	1,8	146	1,5	10376	2,1
CARAS-SEVERIN	111042	1,3	20545	1,2	82368	1,2	41	0,4	8129	1,6
CALARASI	74604	0,8	16641	1,0	53130	0,8	79	0,8	4833	1,0
CLUJ	390850	4,4	76920	4,6	300781	4,5	197	2,0	13149	2,6
CONSTANTA	388017	4,4	69807	4,2	292431	4,4	926	9,3	25779	5,1
COVASNA	79354	0,9	14234	0,9	60780	0,9	18	0,2	4340	0,9
DAMBOVITA	132659	1,5	31068	1,9	88270	1,3	98	1,0	13321	2,6
DOLJ	243981	2,8	43951	2,6	187402	2,8	215	2,2	12628	2,5
GALATI	240969	2,7	39374	2,4	187777	2,8	125	1,3	13818	2,7
GIURGIU	61643	0,7	13520	0,8	43149	0,6	47	0,5	4974	1,0
GORJ	117200	1,3	19861	1,2	91177	1,4	48	0,5	6162	1,2
HARGHITA	129105	1,5	25560	1,5	99061	1,5	51	0,5	4484	0,9
HUNEDOARA	174489	2,0	34081	2,0	127088	1,9	126	1,3	13320	2,6
IALOMITA	83136	0,9	15531	0,9	61911	0,9	78	0,8	5694	1,1
IASI	296881	3,4	51663	3,1	233633	3,5	597	6,0	11585	2,3
MARAMURES	183109	2,1	42772	2,6	129677	1,9	159	1,6	10660	2,1
MEHEDINTI	86693	1,0	18664	1,1	60148	0,9	55	0,6	7881	1,6
MURES	249095	2,8	41964	2,5	194039	2,9	83	0,8	13092	2,6
NEAMT	187934	2,1	36695	2,2	137136	2,1	304	3,1	14103	2,8
OLT	111744	1,3	23401	1,4	79441	1,2	21	0,2	8902	1,8
PRAHOVA	306197	3,5	55141	3,3	236075	3,5	274	2,8	14981	3,0
SALAJ	75431	0,9	16189	1,0	54555	0,8	29	0,3	4687	0,9
SATU MARE	142438	1,6	28149	1,7	104120	1,6	26	0,3	10169	2,0
SIBIU	191976	2,2	32283	1,9	152283	2,3	31	0,3	7410	1,5
SUCEAVA	216364	2,5	42526	2,6	157637	2,4	29	0,3	16201	3,2
TELEORMAN	94655	1,1	18751	1,1	71418	1,1	49	0,5	4486	0,9
TIMIS	317464	3,6	58473	3,5	243057	3,7	271	2,7	15934	3,2
TULCEA	91915	1,0	17112	1,0	69722	1,0	149	1,5	5081	1,0
VASLUI	98366	1,1	21168	1,3	68809	1,0	197	2,0	8389	1,7
VALCEA	137340	1,6	27460	1,6	101644	1,5	138	1,4	8236	1,6
VRANCEA	110410	1,3	20562	1,2	85426	1,3	51	0,5	4422	0,9
MUN. BUCURESTI	1825239	20,7	315950	19,0	1396262	21,0	2641	26,6	113027	22,5
ILFOV	123133	1,4	27121	1,6	89655	1,3	21	0,2	6357	1,3

*) according to the effect of Law No. 314/2001, art.1 și art. 6

*** Less than 0,01%

Table no. 2

**Operations registered in the Trade Register, by categories
during the period of December 1990 - September 2007, in total by country and counties,
- rate of categories of operations in total operations/country -**

Counties	Total registered operations of		out of which :							
			Registered companies		Changes in statutory documents		out of which : of liquidation, dissolution		Strike off companies	
	No.	%	No.	%	No.	%	No.	%	No.	%
0	1	2	3	4	5	6	7	8	11	12
Total ROMÂNIA	8819106	100,0	1665524	18,9	6650648	75,4	9911	0,1	502934	5,7
ALBA	115002	100,0	26166	22,8	84096	73,1	371	0,3	4740	4,1
ARAD	199914	100,0	40925	20,5	148904	74,5	369	0,2	10085	5,0
ARGES	214168	100,0	42908	20,0	162327	75,8	197	0,1	8933	4,2
BACAU	205219	100,0	41701	20,3	151752	73,9	1003	0,5	11766	5,7
BIHOR	255570	100,0	50495	19,8	190788	74,7	303	0,1	14287	5,6
BISTRITA-NASAUD	107369	100,0	20365	19,0	80763	75,2	72	0,1	6241	5,8
BOTOSANI	81645	100,0	20507	25,1	55544	68,0	66	0,1	5594	6,9
BRASOV	294395	100,0	51948	17,6	231242	78,5	149	0,1	11205	3,8
BRAILA	111114	100,0	22854	20,6	84787	76,3	61	0,1	3473	3,1
BUZAU	161277	100,0	30518	18,9	120383	74,6	146	0,1	10376	6,4
CARAS-SEVERIN	111042	100,0	20545	18,5	82368	74,2	41	0,0	8129	7,3
CALARASI	74604	100,0	16641	22,3	53130	71,2	79	0,1	4833	6,5
CLUJ	390850	100,0	76920	19,7	300781	77,0	197	0,1	13149	3,4
CONSTANTA	388017	100,0	69807	18,0	292431	75,4	926	0,2	25779	6,6
COVASNA	79354	100,0	14234	17,9	60780	76,6	18	0,0	4340	5,5
DAMBOVITA	132659	100,0	31068	23,4	88270	66,5	98	0,1	13321	10,0
DOLJ	243981	100,0	43951	18,0	187402	76,8	215	0,1	12628	5,2
GALATI	240969	100,0	39374	16,3	187777	77,9	125	0,1	13818	5,7
GIURGIU	61643	100,0	13520	21,9	43149	70,0	47	0,1	4974	8,1
GORJ	117200	100,0	19861	16,9	91177	77,8	48	0,0	6162	5,3
HARGHITA	129105	100,0	25560	19,8	99061	76,7	51	0,0	4484	3,5
HUNEDOARA	174489	100,0	34081	19,5	127088	72,8	126	0,1	13320	7,6
IALOMITA	83136	100,0	15531	18,7	61911	74,5	78	0,1	5694	6,8
IASI	296881	100,0	51663	17,4	233633	78,7	597	0,2	11585	3,9
MARAMURES	183109	100,0	42772	23,4	129677	70,8	159	0,1	10660	5,8
MEHEDINTI	86693	100,0	18664	21,5	60148	69,4	55	0,1	7881	9,1
MURES	249095	100,0	41964	16,8	194039	77,9	83	0,0	13092	5,3
NEAMT	187934	100,0	36695	19,5	137136	73,0	304	0,2	14103	7,5
OLT	111744	100,0	23401	20,9	79441	71,1	21	0,0	8902	8,0
PRAHOVA	306197	100,0	55141	18,0	236075	77,1	274	0,1	14981	4,9
SALAJ	75431	100,0	16189	21,5	54555	72,3	29	0,0	4687	6,2
SATU MARE	142438	100,0	28149	19,8	104120	73,1	26	0,0	10169	7,1
SIBIU	191976	100,0	32283	16,8	152283	79,3	31	0,0	7410	3,9
SUCEAVA	216364	100,0	42526	19,7	157637	72,9	29	0,0	16201	7,5
TELEORMAN	94655	100,0	18751	19,8	71418	75,5	49	0,1	4486	4,7
TIMIS	317464	100,0	58473	18,4	243057	76,6	271	0,1	15934	5,0
TULCEA	91915	100,0	17112	18,6	69722	75,9	149	0,2	5081	5,5
VASLUI	98366	100,0	21168	21,5	68809	70,0	197	0,2	8389	8,5
VALCEA	137340	100,0	27460	20,0	101644	74,0	138	0,1	8236	6,0
VRANCEA	110410	100,0	20562	18,6	85426	77,4	51	0,0	4422	4,0
MUN. BUCURESTI	1825239	100,0	315950	17,3	1396262	76,5	2641	0,1	113027	6,2
ILFOV	123133	100,0	27121	22,0	89655	72,8	21	0,0	6357	5,2

*) according to the effect of Law No. 314/2001, art.1 și art. 6

*** Less than 0,01%

Table no.3

**Number and structure of incorporations in the Trade Register, by years,
' 30 Septembrie 2007**

Period (year, month)	Registered companies		Percentage	
	No.	%	%	
0	1	2	3	
Total, 30 September 2007, out of which	1665524	100,00		
Year 1990	81	0,00		
Year 1991	95840	5,75		
Year 1992	137456	8,25		
Year 1993	117078	7,03		
Year 1994	137445	8,25		
Year 1995	65479	3,93		
Year 1996	62089	3,73		
Year 1997	55663	3,34		
Year 1998	63878	3,84		
Year 1999	57197	3,43		
Year 2000	57291	3,44		
Year 2001	61265	3,68		
Year 2002	84780	5,09		
Year 2003	123582	7,42		
Year 2004	144284	8,66		
Year 2005	157375	9,45		
Year 2006	135211	8,12		
Year 2007 (I - XII) out of which :	109530			100,0
January	10979			10,0
February	13249			12,1
March	14721			13,4
April	10908			10,0
May	12749			11,6
June	12463			11,4
July	11670			10,7
August	11841			10,8
September	10950			10,00

Note: Column 2 reveals the annual structure of incorporations; column 3 reveals the structure by months during the current year.

*** Less than 0,01%

Diagram no.1

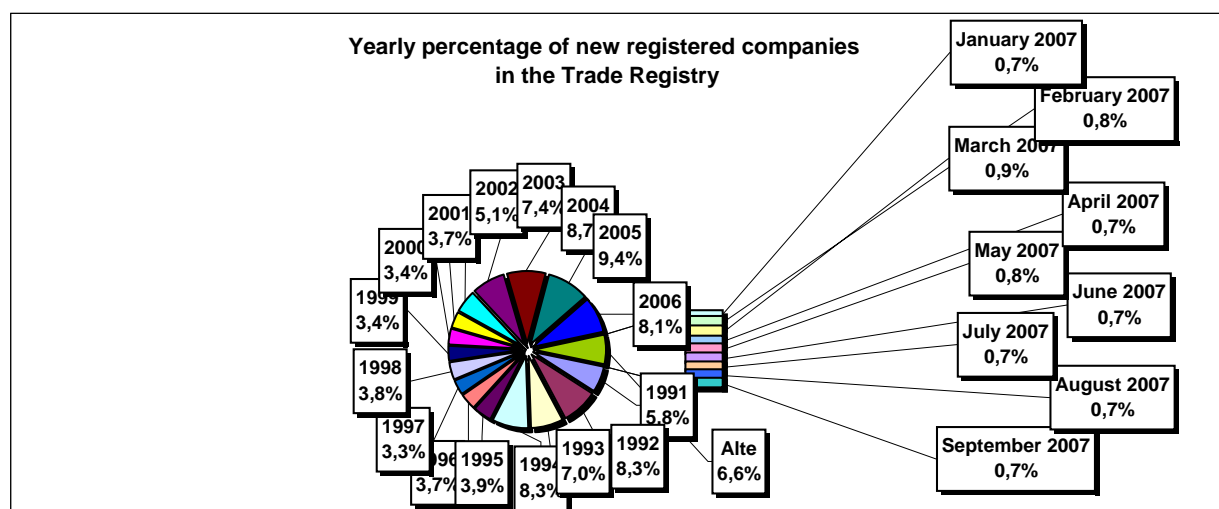


Table no. 4

The number of incorporations in the Trade Register, by counties and sources of capital, in the period December 1990 - September 2007

Counties	Total		out of which:					Ranking by: *	
			Private capital			State majority capital			Mixed capital (state+private)
	out of which:			out of which:					
	PF+AF	Companies	OC	RA	Companies	Companies			
No.	%	No.	No.	No.	No.	No.	No.		
0	1	2	3	4	5	6	7	8	9
Total ROMÂNIA	1665524	100,0	429894	1217928	5397	1348	2367	8590	X
ALBA	26166	1,6	9059	16711	141	38	47	170	25
ARAD	40926	2,5	15569	24797	157	27	41	335	15
ARGES	42908	2,6	13824	28706	168	29	29	152	10
BACAU	41701	2,5	13795	27448	158	35	42	223	14
BIHOR	50495	3,0	11885	38057	146	37	62	308	8
BISTRITA-NASAUD	20365	1,2	7221	12889	98	19	29	109	33
BOTOSANI	20507	1,2	9443	10630	122	21	172	119	32
BRASOV	51948	3,1	10877	40655	114	45	87	170	6
BRAILA	22854	1,4	5738	16783	96	28	43	166	28
BUZAU	30518	1,8	8964	21211	142	28	42	131	21
CARAS-SEVERIN	20545	1,2	7091	13115	102	35	65	137	31
CALARASI	16641	1,0	4883	11482	86	18	77	95	38
CLUJ	76920	4,6	19530	56886	150	52	40	262	2
CONSTANTA	69807	4,2	13470	55493	203	51	49	541	3
COVASNA	14234	0,9	4895	9106	68	24	32	109	41
DAMBOVITA	31068	1,9	14097	16580	134	29	75	153	20
DOLJ	43951	2,6	8943	34546	162	40	57	203	9
GALATI	39374	2,4	7947	31068	135	30	51	143	16
GIURGIU	13520	0,8	3226	9973	80	22	109	110	42
GORJ	19861	1,2	4745	14699	184	50	83	100	34
HARGHITA	25560	1,5	10302	14877	86	23	43	229	26
HUNEDOARA	34081	2,0	8946	24640	81	40	92	282	18
IALOMITA	15531	0,9	5918	9387	74	15	46	91	40
IASI	51663	3,1	14254	36797	164	34	70	344	7
MARAMURES	42772	2,6	17190	25259	124	37	39	123	11
MEHEDINTI	18664	1,1	5950	12488	82	19	27	98	36
MURES	41964	2,5	15506	26070	156	30	34	168	13
NEAMT	36695	2,2	13619	22691	161	29	30	165	17
OLT	23401	1,4	9169	13858	161	26	64	123	27
PRAHOVA	55141	3,3	17037	37534	177	50	72	271	5
SALAJ	16189	1,0	6301	9671	107	19	28	63	39
SATU MARE	28149	1,7	9273	18593	88	19	42	134	22
SIBIU	32283	1,9	7913	23951	119	34	108	158	19
SUCEAVA	42526	2,6	20326	21684	202	30	64	220	12
TELEORMAN	18751	1,1	6480	11871	152	21	45	182	35
TIMIS	58473	3,5	9474	48405	140	38	68	348	4
TULCEA	17112	1,0	5922	10852	66	18	42	212	37
VASLUI	21168	1,3	10187	10680	109	16	41	135	29
VALCEA	27460	1,6	10795	16307	168	40	37	113	23
VRANCEA	20562	1,2	6262	14039	104	16	27	114	30
MUN. BUCURESTI	315949	19,0	20424	294053	138	115	103	1116	1
ILFOV	27121	1,6	3444	23386	92	21	13	165	24

*) The total number of incorporations (col 1)

*** Less than 0,01%

Table no. 5

**The number of incorporations in the Trade Register,
by counties and categories, during the period of
December 1990 - September 2007**

County	Total		out of which:						RA	OC
			PF+AF	companies: 1228885						
	SNC	SCS		SRL	SA	No.	No.			
	No.	%	No.	No.	No.			No.	No.	No.
0	1	2	3	4	5	6	7	8	9	
Total ROMÂNIA	1665524	100,0	429894	32657	1572	1162271	32379	1348	5397	
ALBA	26166	1,6	9059	890	11	15472	555	38	141	
ARAD	40925	2,5	15569	53	11	24430	677	27	157	
ARGES	42908	2,6	13824	107	15	27946	819	29	168	
BACAU	41701	2,5	13795	1299	4	25684	725	35	158	
BIHOR	50495	3,0	11885	126	47	37356	898	37	146	
BISTRITA-NASAUD	20365	1,2	7221	146	21	12446	414	19	98	
BOTOSANI	20507	1,2	9443	468	1	10001	451	21	122	
BRASOV	51948	3,1	10877	239	20	39805	848	45	114	
BRAILA	22854	1,4	5738	376	12	16088	516	28	96	
BUZAU	30518	1,8	8964	3747	46	17021	570	28	142	
CARAS-SEVERIN	20545	1,2	7091	117	8	12728	464	35	102	
CALARASI	16641	1,0	4883	609	3	10691	351	18	86	
CLUJ	76920	4,6	19530	2112	18	53787	1271	52	150	
CONSTANTA	69807	4,2	13470	311	23	54276	1473	51	203	
COVASNA	14234	0,9	4895	148	4	8798	297	24	68	
DAMBOVITA	31068	1,9	14097	60	8	16253	487	29	134	
DOLJ	43951	2,6	8943	1560	8	32358	880	40	162	
GALATI	39374	2,4	7947	1574	6	28843	839	30	135	
GIURGIU	13520	0,8	3226	35	8	9826	323	22	80	
GORJ	19861	1,2	4745	29	1	14363	489	50	184	
HARGHITA	25560	1,5	10302	62	6	14595	486	23	86	
HUNEDOARA	34081	2,0	8946	1166	98	23079	671	40	81	
IALOMITA	15531	0,9	5918	266	11	8903	344	15	74	
IASI	51663	3,1	14254	506	111	35590	1002	34	164	
MARAMURES	42772	2,6	17190	1927	23	22878	592	37	124	
MEHEDINTI	18664	1,1	5950	427	3	11855	328	19	82	
MURES	41964	2,5	15506	37	34	25537	664	30	156	
NEAMT	36695	2,2	13619	3293	30	18896	667	29	161	
OLT	23401	1,4	9169	1611	1	11944	489	26	161	
PRAHOVA	55141	3,3	17037	3122	14	33847	894	50	177	
SALAJ	16189	1,0	6301	600	4	8866	292	19	107	
SATU MARE	28149	1,7	9273	283	6	18009	471	19	88	
SIBIU	32283	1,9	7913	777	48	22737	655	34	119	
SUCEAVA	42526	2,6	20326	438	8	20939	583	30	202	
TELEORMAN	18751	1,1	6480	272	399	11014	413	21	152	
TIMIS	58473	3,5	9474	609	29	46936	1247	38	140	
TULCEA	17112	1,0	5922	1363	114	9155	474	18	66	
VASLUI	21168	1,3	10187	90	12	10350	404	16	109	
VALCEA	27460	1,6	10795	364	6	15602	485	40	168	
VRANCEA	20562	1,2	6262	356	10	13366	448	16	104	
MUN. BUCURESTI	315950	19,0	20424	1033	299	287124	6816	115	138	
ILFOV	27121	1,6	3444	49	31	22877	607	21	92	

Table no. 6

**The number of incorporations in the Trade Register, by field of activity*
during the period of December 1990 - September 2007**

CAEN segment	Field of activity	Total		out of which:						
				PF+AF	companies: 1228885				RA	OC
		No.	%		No.	SNC	SCS	SRL		
				No.		No.	No.	No.	No.	No.
0	1	2	3	4	5	6	7	8	9	10
	Total ROMANIA	1665524	100,0	429894	32657	1572	1162271	32379	1348	5397
1	Agriculture, hunting and related service activities	66344	4,0	17324	2024	44	42990	3792	53	117
2	Forestry, logging and related service activities	8846	0,5	1172	152	3	7193	222	96	8
5	Fishing, fish farming and related service activities	3409	0,2	1996	17	3	1339	54		
10	Mining of coal and lignite; extraction of peat	123	0,0	2			85	32	4	
11	Extraction of crude petroleum and natural gas; service activities incidental to oil and gas extraction, excluding surveying	365	0,0	22	1		171	125	46	
12	Mining of uranium and thorium ores	133	0,0	32			95	6		
13	Mining of metal ores	540	0,0	163			314	55	8	
14	Other mining and quarrying	1762	0,1	110	9	1	1469	170	2	1
15	Manufacture of food products and beverages	74331	4,5	14871	3260	149	53937	1861	5	248
16	Manufacture of tobacco products	292	0,0	47			213	31	1	
17	Manufacture of textiles	11946	0,7	2440	556	16	8383	406		145
18	Manufacture of wearing apparel; dressing and dyeing of fur	21496	1,3	4929	875	38	14989	359	1	305
19	Tanning and dressing of leather; manufacture of luggage, handbags, saddlery, harness and footwear	5457	0,3	932	112	6	4232	123	1	51
20	Manufacture of wood and of products of wood and cork, except furniture; manufacture of articles of straw and plaiting materials	25967	1,6	9292	575	29	15521	499	9	42
21	Manufacture of pulp, paper and paper products	1857	0,1	129	21	1	1595	98		13
22	Publishing, printing and reproduction of recorded media	12327	0,7	998	317	22	10559	407	14	10
23	Manufacture of coke, refined petroleum products and nuclear fuel	265	0,0	25			204	34	2	
24	Manufacture of chemicals and chemical products	3799	0,2	120	89	1	3197	380	6	6
25	Manufacture of rubber and plastic products	6554	0,4	588	314	7	5358	262		24
26	Manufacture of other non-metallic mineral products	9805	0,6	3022	212	6	6154	392	5	14
27	Manufacture of basic metals	2479	0,1	175	39	3	2044	208	3	7
28	Manufacture of fabricated metal products, except machinery and equipment	18346	1,1	4622	361	23	12541	726	11	62
29	Manufacture of machinery and equipment n.e.c.	3941	0,2	113	44	7	3331	422	19	5
30	Manufacture of office machinery and computers	1794	0,1	16	25	4	1669	80		
31	Manufacture of electrical machinery and apparatus n.e.c.	2004	0,1	112	44	6	1692	144		6
32	Manufacture of radio, television and communication equipment and apparatus	894	0,1	66	14	4	736	73		1
33	Manufacture of medical, precision and optical instruments, watches and clocks	2758	0,2	656	17	2	1973	106		4
34	Manufacture of motor vehicles, trailers and semi-trailers	944	0,1	31	31	3	751	126		2
35	Manufacture of other transport equipment	2047	0,1	300	86	7	1454	125	73	2
36	Manufacture of furniture; manufacturing n.e.c.	16292	1,0	4646	284	16	10845	338	5	158
37	Recycling	5227	0,3	452	51	5	4543	175		1
40	Electricity, gas, steam and hot water supply	3125	0,2	839	3	1	1646	547	89	
41	Collection, purification and distribution of water	3596	0,2	1637	2		1664	220	73	
45	Construction	110686	6,6	28694	611	44	78743	2463	54	77

*)Field of activity declared when registered, according to CAEN classification

Table no. 6
(continuing)

**The number of incorporations in the Trade Register, by field of activity*
and categories, during the period of December 1990 - September 2007**

CAEN segment	Field of activity	Total		out of which:						
				PF+AF	companies: 1228885				RA	OC
					SNC	SCS	SRL	SA		
					No.	No.	No.	No.		
0	1	2	3	4	5	6	7	8	9	10
	Total ROMÂNIA	1665524	100,0	429894	32657	1572	1162271	32379	1348	5397
50	Sale, maintenance and repair of motor vehicles and motorcycles; retail sale of automotive fuel	56848	3,4	9063	1244		45432	1027	6	42
51	Wholesale trade and commission trade, except of motor vehicles and motorcycles	212362	12,8	19625	4524	151	184424	3321	35	282
52	Retail trade, except of motor vehicles and motorcycles; repair of personal and household goods	517778	31,1	184392	11915	558	316023	2498	6	2385
55	Hotels and restaurants	64111	3,8	15086	1635	126	46306	790	73	95
60	Land transport; transport via pipelines	87603	5,3	37551	845	37	48067	1060	33	10
61	Water transport	902	0,1	176	82	8	501	64	70	1
62	Air transport	313	0,0	18			235	50	10	
63	Supporting and auxiliary transport activities; activities of travel agencies	11152	0,7	782	220	14	9587	442	96	11
64	Post and telecommunications	8099	0,5	970	11	1	6796	307	11	3
65	Financial intermediation, except insurance and pension funding	6856	0,4	152	15		3103	2551	2	1033
66	Insurance and pension funding, except compulsory social security	2093	0,1	619	1		518	954		1
67	Activities auxiliary to financial intermediation	7732	0,5	1330	7	2	6091	294		8
70	Real estate activities	28847	1,7	815	30	9	27284	685	17	7
71	Renting of machinery and equipment without operator and of personal and household goods	3974	0,2	738	116	8	2941	100	70	1
72	Computer and related activities	26572	1,6	6112	120	13	19937	385	2	3
73	Research and development	1835	0,1	262	11	2	1342	173	43	2
74	Other business activities	123723	7,4	26337	795	77	94649	1698	106	60
75	Public administration and defence; compulsory social security	369	0,0	93	5		222	26	22	1
80	Education	8000	0,5	4151	62	6	3715	66		
85	Health and social work	17069	1,0	2167	233	16	14564	85	3	1
90	Sewage and refuse disposal, sanitation and similar activities	1048	0,1	110	13	2	793	110	18	
91	Activities of membership organizations n.e.c.	216	0,0	95	1		102	15		3
92	Recreational, cultural and sporting activities	18489	1,1	5206	202	14	12681	305	69	12
93	Other service activities	28700	1,7	12747	418	42	14983	307	76	126
95	Activities of households as employers of domestic staff	995	0,1	660	6	1	324	3		1
96	Extra-territorial organizations and bodies	11	0,0	11						

*)Field of activity declared when registered, according to CAEN classification

Table no. 7

**Operations carried on with the Trade Registers,
by counties and categories,
in September 2007**

County	Total of operations carried on		out of which:							
			New incorporations		Changes in statutory documents		out of which: of liquidation, dissolution		Strike off companies	
	No.	%	No.	%	No.	%	No.	%	No.	%
0	1	2	3	4	5	6	7	8	9	10
Total ROMÂNIA	103364	100,0	10950	10,6	89859	86,9	2462	2,4	2555	2,5
ALBA	834	100,0	215	25,8	576	69,1	24	2,9	43	5,2
ARAD	1350	100,0	211	15,6	1109	82,1	8	0,6	30	2,2
ARGES	1645	100,0	262	15,9	1330	80,9	16	1,0	53	3,2
BACAU	1173	100,0	262	22,3	873	74,4	19	1,6	38	3,2
BIHOR	1299	100,0	420	32,3	817	62,9	6	0,5	62	4,8
BISTRITA-NASAUD	939	100,0	180	19,2	633	67,4	15	1,6	126	13,4
BOTOSANI	603	100,0	123	20,4	463	76,8	3	0,5	17	2,8
BRASOV	2311	100,0	331	14,3	1915	82,9	143	6,2	65	2,8
BRAILA	1922	100,0	150	7,8	1748	90,9	4	0,2	24	1,2
BUZAU	902	100,0	191	21,2	660	73,2	35	3,9	51	5,7
CARAS-SEVERIN	686	100,0	131	19,1	526	76,7	24	3,5	29	4,2
CALARASI	314	100,0	80	25,5	227	72,3	2	0,6	7	2,2
CLUJ	3025	100,0	548	18,1	2431	80,4	14	0,5	46	1,5
CONSTANTA	3520	100,0	421	12,0	2717	77,2	280	8,0	382	10,9
COVASNA	366	100,0	75	20,5	281	76,8	2	0,5	10	2,7
DAMBOVITA	853	100,0	191	22,4	624	73,2	35	4,1	38	4,5
DOLJ	16356	100,0	267	1,6	15897	97,2	133	0,8	192	1,2
GALATI	1625	100,0	342	21,0	1249	76,9	21	1,3	34	2,1
GIURGIU	1517	100,0	91	6,0	1403	92,5	6	0,4	23	1,5
GORJ	5940	100,0	127	2,1	5769	97,1	41	0,7	44	0,7
HARGHITA	912	100,0	176	19,3	707	77,5	22	2,4	29	3,2
HUNEDOARA	1535	100,0	204	13,3	1311	85,4	141	9,2	20	1,3
IALOMITA	414	100,0	91	22,0	305	73,7			18	4,3
IASI	2578	100,0	387	15,0	2112	81,9	418	16,2	79	3,1
MARAMURES	1636	100,0	282	17,2	1253	76,6	13	0,8	101	6,2
MEHEDINTI	363	100,0	93	25,6	255	70,2	1	0,3	15	4,1
MURES	14559	100,0	255	1,8	14238	97,8	175	1,2	66	0,5
NEAMT	1227	100,0	193	15,7	1000	81,5	11	0,9	34	2,8
OLT	777	100,0	132	17,0	617	79,4	3	0,4	28	3,6
PRAHOVA	2337	100,0	386	16,5	1844	78,9	150	6,4	107	4,6
SALAJ	528	100,0	108	20,5	387	73,3	59	11,2	33	6,3
SATU MARE	1238	100,0	228	18,4	795	64,2	4	0,3	215	17,4
SIBIU	1254	100,0	227	18,1	997	79,5	32	2,6	30	2,4
SUCEAVA	1459	100,0	227	15,6	1185	81,2	4	0,3	47	3,2
TELEORMAN	482	100,0	116	24,1	287	59,5	1	0,2	79	16,4
TIMIS	1500	100,0	385	25,7	1071	71,4	18	1,2	44	2,9
TULCEA	4752	100,0	112	2,4	4621	97,2	48	1,0	19	0,4
VASLUI	1454	100,0	99	6,8	1310	90,1	33	2,3	45	3,1
VALCEA	769	100,0	161	20,9	571	74,3	7	0,9	37	4,8
VRANCEA	770	100,0	119	15,5	612	79,5	8	1,0	39	5,1
MUN. BUCURESTI	13703	100,0	2117	15,4	11458	83,6	418	3,1	128	0,9
ILFOV	1937	100,0	234	12,1	1675	86,5	65	3,4	28	1,4

*) by effect of implementation of Law no. 314/2001, art.1 and art. 6

*** Less than 0,01%

Table no. 8

**The number of incorporations in the Trade Register,
by counties and sources of capital,
in September 2007**

County	Total		out of which:					Rnking by: *	
			Private capital			State majority capital			Mixed capital (state+priva)
			out of which:			out of which:			
			PF+AF	Companies	OC	RA	Companie s		Companie s
No.	%	No.	No.	No.	No.	No.	No.		
0	1	2	3	4	5	6	7	8	9
Total ROMÂNIA	10950	100,0	2982	7967		1			X
ALBA	215	2,0	91	124					19
ARAD	211	1,9	69	142					20
ARGES	262	2,4	52	210					12
BACAU	262	2,4	90	172					13
BIHOR	420	3,8	149	271					4
BISTRITA-NASAUD	180	1,6	53	127					25
BOTOSANI	123	1,1	63	60					32
BRASOV	331	3,0	93	238					9
BRAILA	150	1,4	45	105					28
BUZAU	191	1,7	51	140					23
CARAS-SEVERIN	131	1,2	52	79					30
CALARASI	80	0,7	12	68					41
CLUJ	548	5,0	124	424					2
CONSTANTA	421	3,8	63	358					3
COVASNA	75	0,7	31	44					42
DAMBOVITA	191	1,7	57	134					24
DOLJ	267	2,4	48	219					11
GALATI	342	3,1	139	203					8
GIURGIU	91	0,8	21	70					39
GORJ	127	1,2	42	85					31
HARGHITA	176	1,6	90	86					26
HUNEDOARA	204	1,9	37	166		1			21
IALOMITA	91	0,8	40	51					40
IASI	387	3,5	127	260					5
MARAMURES	282	2,6	99	183					10
MEHEDINTI	93	0,8	40	53					38
MURES	255	2,3	97	158					14
NEAMT	193	1,8	79	114					22
OLT	132	1,2	43	89					29
PRAHOVA	386	3,5	116	270					6
SALAJ	108	1,0	36	72					36
SATU MARE	228	2,1	93	135					16
SIBIU	227	2,1	69	158					17
SUCEAVA	227	2,1	88	139					18
TELEORMAN	116	1,1	40	76					34
TIMIS	385	3,5	69	316					7
TULCEA	112	1,0	50	62					35
VASLUI	99	0,9	38	61					37
VALCEA	161	1,5	43	118					27
VRANCEA	119	1,1	17	102					33
MUN. BUCURESTI	2117	19,3	307	1810					1
ILFOV	234	2,1	19	215					15

*) The total number of incorporations (col 1)

*** Less than 0,01%

Table no.9

**The number of incorporations in the Trade Register,
by counties and category
in September 2007**

County	Total		out of which:						RA	OC
			PF+AF	companies: 7967						
	No.	%		No.	SNC	SCS	SRL	SA	No.	No.
			No.		No.	No.	No.			
0	1	2	3	4	5	6	7	8	9	
Total ROMÂNIA	10950	100,0	2982	1	4	7888	74	1		
ALBA	215	2,0	91			124				
ARAD	211	1,9	69			140	2			
ARGES	262	2,4	52			209	1			
BACAU	262	2,4	90			171	1			
BIHOR	420	3,8	149			267	4			
BISTRITA-NASAUD	180	1,6	53			127				
BOTOSANI	123	1,1	63			60				
BRASOV	331	3,0	93			238				
BRAILA	150	1,4	45			105				
BUZAU	191	1,7	51			139	1			
CARAS-SEVERIN	131	1,2	52			78	1			
CALARASI	80	0,7	12			68				
CLUJ	548	5,0	124			420	4			
CONSTANTA	421	3,8	63			356	2			
COVASNA	75	0,7	31			44				
DAMBOVITA	191	1,7	57			133	1			
DOLJ	267	2,4	48			217	2			
GALATI	342	3,1	139			202	1			
GIURGIU	91	0,8	21			70				
GORJ	127	1,2	42			84	1			
HARGHITA	176	1,6	90			86				
HUNEDOARA	204	1,9	37			162	4	1		
IALOMITA	91	0,8	40			51				
IASI	387	3,5	127			259	1			
MARAMURES	282	2,6	99			180	3			
MEHEDINTI	93	0,8	40			53				
MURES	255	2,3	97			156	2			
NEAMT	193	1,8	79			113	1			
OLT	132	1,2	43			87	2			
PRAHOVA	386	3,5	116			268	2			
SALAJ	108	1,0	36			72				
SATU MARE	228	2,1	93			132	3			
SIBIU	227	2,1	69	1		157				
SUCEAVA	227	2,1	88			139				
TELEORMAN	116	1,1	40			76				
TIMIS	385	3,5	69		2	312	2			
TULCEA	112	1,0	50			61	1			
VASLUI	99	0,9	38			61				
VALCEA	161	1,5	43			117	1			
VRANCEA	119	1,1	17			101	1			
MUN. BUCURESTI	2117	19,3	307		2	1779	29			
ILFOV	234	2,1	19			214	1			

Table no. 10

**The number of incorporations in the Trade Register, by field of activity*
and categories in September 2007**

CAEN segment	Field of activity	Total		out of which:						
				PF+AF	companies: 7967				RA	OC
		SNC	SCS		SRL	SA				
		No.	%	No.	No.	No.	No.	No.	No.	No.
0	1	2	3	4	5	6	7	8	9	10
	Total ROMÂNIA	10950	100,0	2982	1	4	7888	74	1	
1	Agriculture, hunting and related service activities	262	2,4	134			127	1		
2	Forestry, logging and related service activities	55	0,5	12			42		1	
5	Fishing, fish farming and related service activities	73	0,7	62			11			
10	Mining of coal and lignite; extraction of peat	3	0,0				3			
11	Extraction of crude petroleum and natural gas; service activities incidental to oil and gas extraction, excluding surveying	2	0,0	1			1			
12	Mining of uranium and thorium ores									
13	Mining of metal ores	2	0,0				2			
14	Other mining and quarrying	7	0,1				7			
15	Manufacture of food products and beverages	93	0,8	33			59	1		
16	Manufacture of tobacco products									
17	Manufacture of textiles	14	0,1	4			10			
18	Manufacture of wearing apparel; dressing and dyeing of fur	65	0,6	16			48	1		
19	Tanning and dressing of leather; manufacture of luggage, handbags, saddlery, harness and footwear	21	0,2	3			18			
20	Manufacture of wood and of products of wood and cork, except furniture; manufacture of articles of straw and plaiting materials	69	0,6	28			41			
21	Manufacture of pulp, paper and paper products	8	0,1				8			
22	Publishing, printing and reproduction of recorded media	59	0,5	9		1	49			
23	Manufacture of coke, refined petroleum products and nuclear fuel	1	0,0				1			
24	Manufacture of chemicals and chemical products	8	0,1				7	1		
25	Manufacture of rubber and plastic products	36	0,3	2			34			
26	Manufacture of other non-metallic mineral products	52	0,5	16			33	3		
27	Manufacture of basic metals	7	0,1	1			6			
28	Manufacture of fabricated metal products, except machinery and equipment	125	1,1	37			88			
29	Manufacture of machinery and equipment n.e.c.	15	0,1				15			
30	Manufacture of office machinery and computers	1	0,0				1			
31	Manufacture of electrical machinery and apparatus n.e.c.	10	0,1				10			
32	Manufacture of radio, television and communication equipment and apparatus	7	0,1	2			5			
33	Manufacture of medical, precision and optical instruments, watches and clocks	16	0,1	2			13	1		
34	Manufacture of motor vehicles, trailers and semi- trailers	2	0,0				2			
35	Manufacture of other transport equipment	18	0,2	4			14			
36	Manufacture of furniture; manufacturing n.e.c.	72	0,7	16			55	1		
37	Recycling	32	0,3	3			29			
40	Electricity, gas, steam and hot water supply	23	0,2				20	3		
41	Collection, purification and distribution of water	7	0,1	3			2	2		
45	Construction	1564	14,3	300			1263	1		

Table no. 10

(continuance)

**The number of incorporations in the Trade Register, by field of activity*
and categories in September 2007**

CAEN segment	Field of activity	Total		out of which:						
				PF+AF	companies: 7967				RA	OC
					SNC	SCS	SRL	SA		
					No.	No.	No.	No.		
0	1	2	3	4	5	6	7	8	9	10
	Total ROMÂNIA	10950	100,0	2982	1	4	7888	74	1	
50	Sale, maintenance and repair of motor vehicles and motorcycles; retail sale of automotive fuel	227	2,1	27			200			
51	Wholesale trade and commission trade, except of motor vehicles and motorcycles	1039	9,5	173			864	2		
52	Retail trade, except of motor vehicles and motorcycles; repair of personal and household goods	1953	17,8	678			1275			
55	Hotels and restaurants	399	3,6	71			328			
60	Land transport; transport via pipelines	869	7,9	332			537			
61	Water transport	7	0,1	1			6			
62	Air transport	1	0,0				1			
63	Supporting and auxiliary transport activities; activities of travel agencies	80	0,7	10			70			
64	Post and telecommunications	78	0,7	31			47			
65	Financial intermediation, except insurance and pension funding	66	0,6	2			28	36		
66	Insurance and pension funding, except compulsory social security	9	0,1	1				8		
67	Activities auxiliary to financial intermediation	119	1,1	11			107	1		
70	Real estate activities	666	6,1	6			653	7		
71	Renting of machinery and equipment without operator and of personal and household goods	57	0,5	2			53	2		
72	Computer and related activities	359	3,3	178			181			
73	Research and development	11	0,1	6			5			
74	Other business activities	1567	14,3	447	1	2	1115	2		
75	Public administration and defence; compulsory social security	1	0,0	1						
80	Education	170	1,6	120			50			
85	Health and social work	90	0,8	4		1	85			
90	Sewage and refuse disposal, sanitation and similar activities	17	0,2	1			16			
91	Activities of membership organizations n.e.c.									
92	Recreational, cultural and sporting activities	193	1,8	70			122	1		
93	Other service activities	228	2,1	109			119			
95	Activities of households as employers of domestic staff	14	0,1	12			2			
96	Extra-territorial organizations and bodies									

*)Field of activity declared when registered, according to CAEN classification

Table no. 11

**Number of companies registered and the amount
of subscribed capital, by county in September 2007**

County	Total registered companies		Subscribed capital		Average subscribed capital on company
	No.	%	thousand RONI	%	thousand RONI
0	1	2	3	4	5
Total ROMÂNIA	7967	100,0	564977,7	100,0	71,4
ALBA	124	1,6	30,2	***	0,2
ARAD	142	1,8	473,0	0,1	3,4
ARGES	210	2,6	161,4	0,0	0,8
BACAU	172	2,2	22619,9	4,0	132,3
BIHOR	271	3,4	1769,1	0,3	6,6
BISTRITA-NASAUD	127	1,6	154,4	0,0	1,2
BOTOSANI	60	0,8	41,3	***	0,7
BRASOV	238	3,0	342,3	0,1	1,4
BRAILA	105	1,3	92,4	0,0	0,9
BUZAU	140	1,8	792,9	0,1	5,7
CARAS-SEVERIN	79	1,0	185,4	0,0	2,4
CALARASI	68	0,9	17,3	***	0,3
CLUJ	424	5,3	1247,0	0,2	3,0
CONSTANTA	358	4,5	4296,0	0,8	12,0
COVASNA	44	0,6	18,9	***	0,4
DAMBOVITA	134	1,7	20271,6	3,6	152,4
DOLJ	219	2,7	331,9	0,1	1,5
GALATI	203	2,5	8992,4	1,6	44,3
GIURGIU	70	0,9	58,1	0,0	0,8
GORJ	85	1,1	45,4	***	0,5
HARGHITA	86	1,1	868,2	0,2	10,2
HUNEDOARA	166	2,1	643,6	0,1	3,9
IALOMITA	51	0,6	15,8	***	0,3
IASI	260	3,3	136,9	0,0	0,5
MARAMURES	183	2,3	193,3	0,0	1,1
MEHEDINTI	53	0,7	1413,5	0,3	26,7
MURES	158	2,0	10613,7	1,9	67,6
NEAMT	114	1,4	151,2	0,0	1,3
OLT	89	1,1	43,1	***	0,5
PRAHOVA	270	3,4	185,4	0,0	0,7
SALAJ	72	0,9	42,8	***	0,6
SATU MARE	135	1,7	125,6	0,0	1,0
SIBIU	158	2,0	397,4	0,1	2,5
SUCEAVA	139	1,7	89,1	0,0	0,6
TELEORMAN	76	1,0	41,5	***	0,5
TIMIS	316	4,0	34692,2	6,1	109,8
TULCEA	62	0,8	20,8	***	0,3
VASLUI	61	0,8	14,4	***	0,2
VALCEA	118	1,5	3766,8	0,7	31,9
VRANCEA	102	1,3	413,9	0,1	4,1
MUN. BUCURESTI	1810	22,7	444941,9	78,8	247,7
ILFOV	215	2,7	4226,0	0,7	19,8

Note: The average does not include filials because according to the Law no.31/1990 they are not juridical persons

*** Less than 0,01%

Table no. 12

**Number of registered companies and the amount
of subscribed capital by category,
in September 2007**

Company type	Total registered companies		Subscribed capital		Average subscribed capital on company
	No.	%	thousant RONI	%	thousant RONI
0	1	2	3	4	5
Total ROMÂNIA	7967	100,0	564977,7	100,0	71,4
SNC	1	0,0	0,1	***	0,1
SCS	4	0,1	25003,6	4,4	6250,9
SA	74	0,9	298896,5	52,9	9340,5
SRL	7888	99,0	241077,5	42,7	30,6
SCA					

Note: The average does not include filials because according to the Law no.31/1990 they are not juridical persons

*** Less than 0,01%

Diagram no.5

