



MINISTRY OF JUSTICE

THE NATIONAL TRADE REGISTER OFFICE

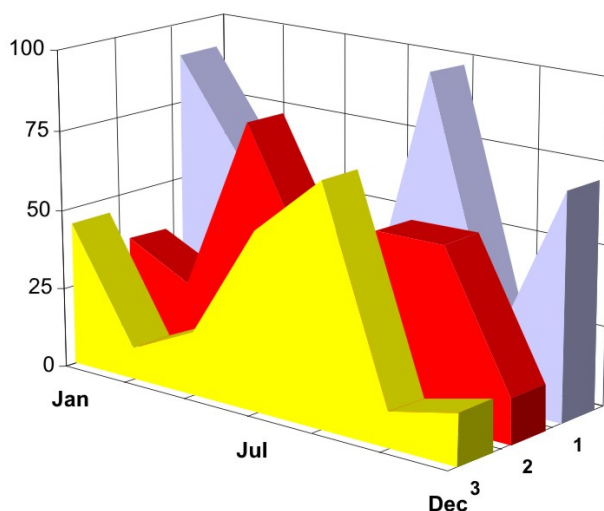
București, Bd. Unirii nr. 74, Bl. J3b, tronson II+III, sector 3; Telefon: +40 21 316.08.04, 316.08.10; Fax: +40 21 316.08.03; Cod poștal: 030837
Website: www.onrc.ro; E-mail: onrc@onrc.ro; Cod de identificare Fiscală: 14942091

PROCEEDINGS IN THE CENTRAL TRADE REGISTER

STATISTICAL SYNTHESIS

OF

**RECORDS IN THE CENTRAL TRADE REGISTER
- the 31th of August 2007 - provisional data -**



- ISSUE No. 189 -

**MINISTRY OF JUSTICE
THE NATIONAL TRADE REGISTER OFFICE**

- Operations of incorporation of companies, changes in statutory documents and strike-off of companies are based on Law No.26/1990 reissued, Law No.31/1990, reissued, OUG No.76/2001, reissued and Methodology Norms No. P/608/1998.

- This paper presents the trend in operations registered in The Trade Register Office attached to the law court of Bucharest and in the Trade Register Offices attached to the law court in each county of Romania.

- Information recorded in the Central Trade Register concern operations compulsory by law to be registered in the trade registers within the 42 trade register offices attached to the law courts.

• No part of the content of this publication, in original or in any modified format, September be reproduced, stored in a retrieval system, or transmitted, in any form or by any means, without the prior permission in writing of The Ministry of Justice – The National Trade Register Office.

• The content of this publication September be referred to in articles, studies, books, as supporting or explanatory data under the condition only, the source of the information to be clearly and precisely specified.

1	Explanatory Note	1
2.1	Data for December 1990 –August 2007	3
	Table no.1 – Operations registered in the Trade Register, by categories during the period of December 1990 –August 2007, in total by country and counties, rate of categories of operations in total operations country	3
	Table no.1.a – Operations registered in the Trade Register, by categories during the period of December 1990 –August 2007, in total by country and counties, counties’ rate in total country	4
	Table no. 3 – Number and structure of incorporations in the Trade Register, by years, during the period of December 1990-August 2007	5
	Table no.4 – The number of incorporations in the Trade Register, by counties and sources of capital, in the period December 1990 -August 2007	6
	Table no. 5 – The number of incorporations in the Trade Register, by counties and categories, during the period of December 1990 –August 2007	7
	Table no. 6 – The number of incorporations in the Trade Register, by field of activity and categories, during the period of December 1990 -August 2007	8
2.2	Data for August 2007	10
	Table no. 7 – Operations carried on with the Trade Registers, by counties and categories, in August 2007	10
	Table no. 8 – The number of incorporations in the Trade Register, by counties and sources of capital, in August 2007	11
	Table no. 9 – The number of incorporations in the Trade Register, by counties and category in August 2007	12
	Table no. 10 –The number of incorporations in the Trade Register, by field of activity and categories in August 2007	13
	Table no. 11 – Number of companies registered and the amount of subscribed capital, by county in August 2007	15
	Table no. 12– Number of registered companies and the amount of subscribed capital by category, in August 2007	16
	Diagram no. 5 – Average subscribed capital on company in August 2007	16

The Trade Register Office is set-up by Law No. 26/1990, reissued and modified by OUG No. 129/2002, became an active institution since December 1990 and is structured in two levels:

- the national level, represented by the National Trade Register Office organised under the Ministry of Justice
- the local level, represented by the 42 trade register offices attached to the law courts and co-ordinated by the National Trade Register Office

The categories of businessmen compulsory to register in the trade register are:

- natural persons tradesmen and family associations doing usually commercial acts, commercial companies, national companies, companies under state supervision, and co-operative organisations
- subsidiaries registered as commercial companies and legal persons following the legal proceedings of set-up, activity and incorporation according to the type of the legally set-up company.

Usual Terms:

- incorporation – represents the registration of the company in the trade registry awarding the quality of legal person.

- other statutory documents – represent the official registration of the changes occurred in a company's life, such as: changes in headquarters' address, increase or decrease of the issued capital, merger, liquidation, strike-off, etc.

- strike-off – represents the removal of a company from the trade registry, due to dissolution and liquidation, being also the very moment the company loses its quality of legal person. Data also include the companies under the provisions of Law No. 314/2001.

- change of certificate – represents the obligation of companies set-up before OGU No. 76/2001 republished came in force, to request the incorporation certificate and fiscal registration certificate to be replaced with the new registration certificate containing the given unique registration code.

The ratio of these changes is being calculated as a proportion between the effective number of changes and the number of active companies due to operate the change.

- active company from the legal point of view – a company registered in the trade register and which is not affected by any of the situations leading to the temporary or permanently loss of this status (e.g. dissolution, liquidation, strike-off)

- operations represent all the records in the trade registry including incorporations, other statutory documents and strike-off of companies, irrespective of the object of activity, company's type and origin of the subscribed capital (local or foreign investment).

• **Terms used in tables and charts**

➤ **Number of companies:** represents, depending on the specific table, the number of companies incorporated in the related period, the number of companies being struck-off from the trade registry.

➤ **Amount of the subscribed capital:**

- **total, in local currency:** the amount of the subscribed capital resulted from totalising the amount subscribed (in cash and in kind) in local currency (ROL)

➤ **Regional development:**

North-East: Suceava, Botoșani, Neamț, Iași, Bacău, Vaslui.

South-East: Vrancea, Galați, Buzău, Brăila, Tulcea, Constanța.

South-Muntenia: Argeș, Dâmbovița, Prahova, Teleorman, Giurgiu, Călărași, Ialomița.

South-West Oltenia: Gorj, Vâlcea, Dolj, Mehedinți, Olt.

West: Arad, Caraș-Severin, Hunedoara, Timiș.

North-West: Bihor, Bistrița, Cluj, Satu Mare, Sălaj, Maramureș.

Center: Alba, Brașov, Covasna, Harghita, Mureș, Sibiu.

Bucharest-Ilfov: București, Ilfov.

CAEN code – The Classification of Activities in the National Economy was approved by HG No. 656/1997, modified by Order No 601 of the President of National Institute of Statistics being compatible with the international classification used in statistic reports and official documents. Activities are ranked upon homogeneity principle by sections, divisions, groups and classes.

Common abbreviations

- **PF** - Natural Persons Tradesman
- **AF** - Family association
- **SNC** - General Partnership
- **SCS** - Limited Partnership
- **SA** - Joint stock company
- **SRL** - Limited liability company
- **RA** - Company Under State Supervision
- **OC** - Co-operative organisation

Source:

The integrated IT system of the trade registry is designed by The National Trade Registry Office according to the provisions of the related legislation in force. The source of information is the computerised system of the trade registers handled by the Trade Register Offices attached to the law courts.

Table no. 1

**Operations registered in the Trade Register, by categories
during the period of December 1990 - August 2007 in total by country and counties,
- rate of categories of operations in total operations/country -**

Counties	Total of registered operations		out of which :							
			Registered companies		Changes in statutory documents		out of which : of liquidation, dissolution		Strike off companies	
	No.	%	No.	%	No.	%	No.	%	No.	%
0	1	2	3	4	5	6	7	8	11	12
Total ROMÂNIA	8715742	100,0	1654574	100,0	6560789	100,0	9911	100,0	500379	100,0
ALBA	114168	1,3	25951	1,6	83520	1,3	371	3,7	4697	0,9
ARAD	198564	2,3	40714	2,5	147795	2,3	369	3,7	10055	2,0
ARGES	212523	2,4	42646	2,6	160997	2,5	197	2,0	8880	1,8
BACAU	204046	2,3	41439	2,5	150879	2,3	1003	10,1	11728	2,3
BIHOR	254271	2,9	50075	3,0	189971	2,9	303	3,1	14225	2,8
BISTRITA-NASAUD	106430	1,2	20185	1,2	80130	1,2	72	0,7	6115	1,2
BOTOSANI	81042	0,9	20384	1,2	55081	0,8	66	0,7	5577	1,1
BRASOV	292084	3,4	51617	3,1	229327	3,5	149	1,5	11140	2,2
BRAILA	109192	1,3	22704	1,4	83039	1,3	61	0,6	3449	0,7
BUZAU	160375	1,8	30327	1,8	119723	1,8	146	1,5	10325	2,1
CARAS-SEVERIN	110356	1,3	20414	1,2	81842	1,2	41	0,4	8100	1,6
CALARASI	74290	0,9	16561	1,0	52903	0,8	79	0,8	4826	1,0
CLUJ	387825	4,4	76372	4,6	298350	4,5	197	2,0	13103	2,6
CONSTANTA	384497	4,4	69386	4,2	289714	4,4	926	9,3	25397	5,1
COVASNA	78988	0,9	14159	0,9	60499	0,9	18	0,2	4330	0,9
DAMBOVITA	131806	1,5	30877	1,9	87646	1,3	98	1,0	13283	2,7
DOLJ	227625	2,6	43684	2,6	171505	2,6	215	2,2	12436	2,5
GALATI	239344	2,7	39032	2,4	186528	2,8	125	1,3	13784	2,8
GIURGIU	60126	0,7	13429	0,8	41746	0,6	47	0,5	4951	1,0
GORJ	111260	1,3	19734	1,2	85408	1,3	48	0,5	6118	1,2
HARGHITA	128193	1,5	25384	1,5	98354	1,5	51	0,5	4455	0,9
HUNEDOARA	172954	2,0	33877	2,0	125777	1,9	126	1,3	13300	2,7
IALOMITA	82722	0,9	15440	0,9	61606	0,9	78	0,8	5676	1,1
IASI	294303	3,4	51276	3,1	231521	3,5	597	6,0	11506	2,3
MARAMURES	181473	2,1	42490	2,6	128424	2,0	159	1,6	10559	2,1
MEHEDINTI	86330	1,0	18571	1,1	59893	0,9	55	0,6	7866	1,6
MURES	234536	2,7	41709	2,5	179801	2,7	83	0,8	13026	2,6
NEAMT	186707	2,1	36502	2,2	136136	2,1	304	3,1	14069	2,8
OLT	110967	1,3	23269	1,4	78824	1,2	21	0,2	8874	1,8
PRAHOVA	303860	3,5	54755	3,3	234231	3,6	274	2,8	14874	3,0
SALAJ	74903	0,9	16081	1,0	54168	0,8	29	0,3	4654	0,9
SATU MARE	141200	1,6	27921	1,7	103325	1,6	26	0,3	9954	2,0
SIBIU	190722	2,2	32056	1,9	151286	2,3	31	0,3	7380	1,5
SUCEAVA	214905	2,5	42299	2,6	156452	2,4	29	0,3	16154	3,2
TELEORMAN	94173	1,1	18635	1,1	71131	1,1	49	0,5	4407	0,9
TIMIS	315964	3,6	58088	3,5	241986	3,7	271	2,7	15890	3,2
TULCEA	87163	1,0	17000	1,0	65101	1,0	149	1,5	5062	1,0
VASLUI	96912	1,1	21069	1,3	67499	1,0	197	2,0	8344	1,7
VALCEA	136571	1,6	27299	1,6	101073	1,5	138	1,4	8199	1,6
VRANCEA	109640	1,3	20443	1,2	84814	1,3	51	0,5	4383	0,9
MUN. BUCURESTI	1811536	20,8	313833	19,0	1384804	21,1	2641	26,6	112899	22,6
ILFOV	121196	1,4	26887	1,6	87980	1,3	21	0,2	6329	1,3

*) according to the effect of Law No. 314/2001, art.1 și art. 6

*** Less than 0,01%

Table no. 2

**Operations registered in the Trade Register, by categories
during the period of December 1990 - August 2007, in total by country and counties,
- rate of categories of operations in total operations/country -**

Counties	Total of registered operations		out of which :							
			Registered companies		Changes in statutory documents		out of which : of liquidation, dissolution		Strike off companies	
	No.	%	No.	%	No.	%	No.	%	No.	%
0	1	2	3	4	5	6	7	8	11	12
Total ROMÂNIA	8715742	100,0	1654574	19,0	6560789	75,3	9911	0,1	500379	5,7
ALBA	114168	100,0	25951	22,7	83520	73,2	371	0,3	4697	4,1
ARAD	198564	100,0	40714	20,5	147795	74,4	369	0,2	10055	5,1
ARGES	212523	100,0	42646	20,1	160997	75,8	197	0,1	8880	4,2
BACAU	204046	100,0	41439	20,3	150879	73,9	1003	0,5	11728	5,7
BIHOR	254271	100,0	50075	19,7	189971	74,7	303	0,1	14225	5,6
BISTRITA-NASAUD	106430	100,0	20185	19,0	80130	75,3	72	0,1	6115	5,7
BOTOSANI	81042	100,0	20384	25,2	55081	68,0	66	0,1	5577	6,9
BRASOV	292084	100,0	51617	17,7	229327	78,5	149	0,1	11140	3,8
BRAILA	109192	100,0	22704	20,8	83039	76,0	61	0,1	3449	3,2
BUZAU	160375	100,0	30327	18,9	119723	74,7	146	0,1	10325	6,4
CARAS-SEVERIN	110356	100,0	20414	18,5	81842	74,2	41	0,0	8100	7,3
CALARASI	74290	100,0	16561	22,3	52903	71,2	79	0,1	4826	6,5
CLUJ	387825	100,0	76372	19,7	298350	76,9	197	0,1	13103	3,4
CONSTANTA	384497	100,0	69386	18,0	289714	75,3	926	0,2	25397	6,6
COVASNA	78988	100,0	14159	17,9	60499	76,6	18	0,0	4330	5,5
DAMBOVITA	131806	100,0	30877	23,4	87646	66,5	98	0,1	13283	10,1
DOLJ	227625	100,0	43684	19,2	171505	75,3	215	0,1	12436	5,5
GALATI	239344	100,0	39032	16,3	186528	77,9	125	0,1	13784	5,8
GIURGIU	60126	100,0	13429	22,3	41746	69,4	47	0,1	4951	8,2
GORJ	111260	100,0	19734	17,7	85408	76,8	48	0,0	6118	5,5
HARGHITA	128193	100,0	25384	19,8	98354	76,7	51	0,0	4455	3,5
HUNEDOARA	172954	100,0	33877	19,6	125777	72,7	126	0,1	13300	7,7
IALOMITA	82722	100,0	15440	18,7	61606	74,5	78	0,1	5676	6,9
IASI	294303	100,0	51276	17,4	231521	78,7	597	0,2	11506	3,9
MARAMURES	181473	100,0	42490	23,4	128424	70,8	159	0,1	10559	5,8
MEHEDINTI	86330	100,0	18571	21,5	59893	69,4	55	0,1	7866	9,1
MURES	234536	100,0	41709	17,8	179801	76,7	83	0,0	13026	5,6
NEAMT	186707	100,0	36502	19,6	136136	72,9	304	0,2	14069	7,5
OLT	110967	100,0	23269	21,0	78824	71,0	21	0,0	8874	8,0
PRAHOVA	303860	100,0	54755	18,0	234231	77,1	274	0,1	14874	4,9
SALAJ	74903	100,0	16081	21,5	54168	72,3	29	0,0	4654	6,2
SATU MARE	141200	100,0	27921	19,8	103325	73,2	26	0,0	9954	7,0
SIBIU	190722	100,0	32056	16,8	151286	79,3	31	0,0	7380	3,9
SUCEAVA	214905	100,0	42299	19,7	156452	72,8	29	0,0	16154	7,5
TELEORMAN	94173	100,0	18635	19,8	71131	75,5	49	0,1	4407	4,7
TIMIS	315964	100,0	58088	18,4	241986	76,6	271	0,1	15890	5,0
TULCEA	87163	100,0	17000	19,5	65101	74,7	149	0,2	5062	5,8
VASLUI	96912	100,0	21069	21,7	67499	69,6	197	0,2	8344	8,6
VALCEA	136571	100,0	27299	20,0	101073	74,0	138	0,1	8199	6,0
VRANCEA	109640	100,0	20443	18,6	84814	77,4	51	0,0	4383	4,0
MUN. BUCURESTI	1811536	100,0	313833	17,3	1384804	76,4	2641	0,1	112899	6,2
ILFOV	121196	100,0	26887	22,2	87980	72,6	21	0,0	6329	5,2

*) according to the effect of Law No. 314/2001, art.1 și art. 6

*** Less than 0,01%

Table no.3

**Number and structure of incorporations in the Trade Register, by years,
31 August 2007**

Period (year, month)	Registered companies		Percentage	
	No.	%	%	
0	1	2	3	
Total, 31 August 2006, out of which	1654574	100,00		
Year 1990	81	0,00		
Year 1991	95840	5,79		
Year 1992	137456	8,31		
Year 1993	117078	7,08		
Year 1994	137445	8,31		
Year 1995	65479	3,96		
Year 1996	62089	3,75		
Year 1997	55663	3,36		
Year 1998	63878	3,86		
Year 1999	57197	3,46		
Year 2000	57291	3,46		
Year 2001	61265	3,70		
Year 2002	84780	5,12		
Year 2003	123582	7,47		
Year 2004	144284	8,72		
Year 2005	157375	9,51		
Year 2006	135211	8,17		
Year 2007 (I - XII) out of which :	98580			100,0
January	10979			11,1
February	13249			13,4
March	14721			14,9
April	10908			11,1
May	12749			12,9
June	12463			12,6
July	11670			11,8
August	11841			12,0

Note: Column 2 reveals the annual structure of incorporations; column 3 reveals the structure by months during the current year.

*** Less than 0,01%

Diagram no.1

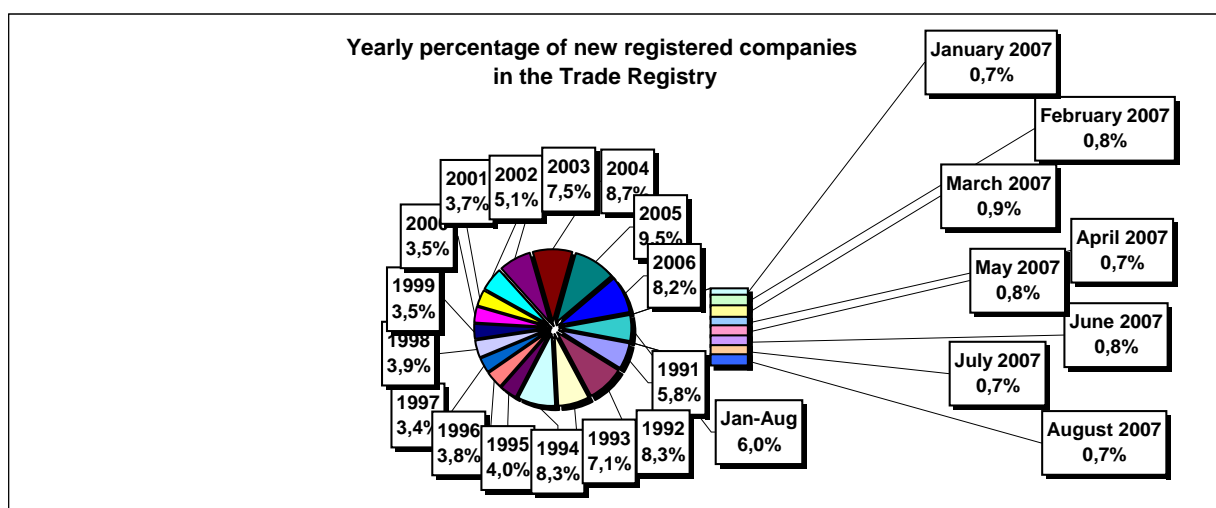


Table no. 4

The number of incorporations in the Trade Register, by counties and sources of capital, in the period December 1990 - August 2007

Counties	Total		out of which:					Ranking by: *	
			Private capital			State majority capital			Mixed capital (state+private)
	out of which:			out of which:					
	PF+AF	Companies	OC	RA	Companies	Companies			
No.	%	No.	No.	No.	No.	No.	No.		
0	1	2	3	4	5	6	7	8	9
Total ROMÂNIA	1654574	100,0	426912	1209961	5397	1347	2367	8590	X
ALBA	25951	1,6	8968	16587	141	38	47	170	25
ARAD	40715	2,5	15500	24655	157	27	41	335	15
ARGES	42646	2,6	13772	28496	168	29	29	152	10
BACAU	41439	2,5	13705	27276	158	35	42	223	14
BIHOR	50075	3,0	11736	37786	146	37	62	308	8
BISTRITA-NASAUD	20185	1,2	7168	12762	98	19	29	109	33
BOTOSANI	20384	1,2	9380	10570	122	21	172	119	32
BRASOV	51617	3,1	10784	40417	114	45	87	170	6
BRAILA	22704	1,4	5693	16678	96	28	43	166	28
BUZAU	30327	1,8	8913	21071	142	28	42	131	21
CARAS-SEVERIN	20414	1,2	7039	13036	102	35	65	137	31
CALARASI	16561	1,0	4871	11414	86	18	77	95	38
CLUJ	76372	4,6	19406	56462	150	52	40	262	2
CONSTANTA	69386	4,2	13407	55135	203	51	49	541	3
COVASNA	14159	0,9	4864	9062	68	24	32	109	41
DAMBOVITA	30877	1,9	14040	16446	134	29	75	153	20
DOLJ	43684	2,6	8895	34327	162	40	57	203	9
GALATI	39032	2,4	7808	30865	135	30	51	143	16
GIURGIU	13429	0,8	3205	9903	80	22	109	110	42
GORJ	19734	1,2	4703	14614	184	50	83	100	34
HARGHITA	25384	1,5	10212	14791	86	23	43	229	26
HUNEDOARA	33877	2,0	8909	24474	81	39	92	282	18
IALOMITA	15440	0,9	5878	9336	74	15	46	91	40
IASI	51276	3,1	14127	36537	164	34	70	344	7
MARAMURES	42490	2,6	17091	25076	124	37	39	123	11
MEHEDINTI	18571	1,1	5910	12435	82	19	27	98	36
MURES	41709	2,5	15409	25912	156	30	34	168	13
NEAMT	36502	2,2	13540	22577	161	29	30	165	17
OLT	23269	1,4	9126	13769	161	26	64	123	27
PRAHOVA	54755	3,3	16921	37264	177	50	72	271	5
SALAJ	16081	1,0	6265	9599	107	19	28	63	39
SATU MARE	27921	1,7	9180	18458	88	19	42	134	22
SIBIU	32056	1,9	7844	23793	119	34	108	158	19
SUCEAVA	42299	2,6	20238	21545	202	30	64	220	12
TELEORMAN	18635	1,1	6440	11795	152	21	45	182	35
TIMIS	58088	3,5	9405	48089	140	38	68	348	4
TULCEA	17000	1,0	5872	10790	66	18	42	212	37
VASLUI	21069	1,3	10149	10619	109	16	41	135	29
VALCEA	27299	1,6	10752	16189	168	40	37	113	23
VRANCEA	20443	1,2	6245	13937	104	16	27	114	30
MUN. BUCURESTI	313832	19,0	20117	292243	138	115	103	1116	1
ILFOV	26887	1,6	3425	23171	92	21	13	165	24

*) The total number of incorporations (col 1)

*** Less than 0,01%

Table no. 5

**The number of incorporations in the Trade Register,
by counties and categories, during the period of
December 1990 - August 2007**

County	Total		out of which:						RA	OC
			PF+AF	companies: 1220918						
	SNC	SCS		SRL	SA	No.	No.			
	No.	%	No.	No.	No.			No.	No.	No.
0	1	2	3	4	5	6	7	8	9	
Total ROMÂNIA	1654574	100,0	426912	32656	1568	1154383	32305	1347	5397	
ALBA	25951	1,6	8968	890	11	15348	555	38	141	
ARAD	40714	2,5	15500	53	11	24290	675	27	157	
ARGES	42646	2,6	13772	107	15	27737	818	29	168	
BACAU	41439	2,5	13705	1299	4	25513	724	35	158	
BIHOR	50075	3,0	11736	126	47	37089	894	37	146	
BISTRITA-NASAUD	20185	1,2	7168	146	21	12319	414	19	98	
BOTOSANI	20384	1,2	9380	468	1	9941	451	21	122	
BRASOV	51617	3,1	10784	239	20	39567	848	45	114	
BRAILA	22704	1,4	5693	376	12	15983	516	28	96	
BUZAU	30327	1,8	8913	3747	46	16882	569	28	142	
CARAS-SEVERIN	20414	1,2	7039	117	8	12650	463	35	102	
CALARASI	16561	1,0	4871	609	3	10623	351	18	86	
CLUJ	76372	4,6	19406	2112	18	53367	1267	52	150	
CONSTANTA	69386	4,2	13407	311	23	53920	1471	51	203	
COVASNA	14159	0,9	4864	148	4	8754	297	24	68	
DAMBOVITA	30877	1,9	14040	60	8	16120	486	29	134	
DOLJ	43684	2,6	8895	1560	8	32141	878	40	162	
GALATI	39032	2,4	7808	1574	6	28641	838	30	135	
GIURGIU	13429	0,8	3205	35	8	9756	323	22	80	
GORJ	19734	1,2	4703	29	1	14279	488	50	184	
HARGHITA	25384	1,5	10212	62	6	14509	486	23	86	
HUNEDOARA	33877	2,0	8909	1166	98	22917	667	39	81	
IALOMITA	15440	0,9	5878	266	11	8852	344	15	74	
IASI	51276	3,1	14127	506	111	35331	1001	34	164	
MARAMURES	42490	2,6	17091	1927	23	22698	589	37	124	
MEHEDINTI	18571	1,1	5910	427	3	11802	328	19	82	
MURES	41709	2,5	15409	37	34	25381	662	30	156	
NEAMT	36502	2,2	13540	3293	30	18783	666	29	161	
OLT	23269	1,4	9126	1611	1	11857	487	26	161	
PRAHOVA	54755	3,3	16921	3122	14	33579	892	50	177	
SALAJ	16081	1,0	6265	600	4	8794	292	19	107	
SATU MARE	27921	1,7	9180	283	6	17877	468	19	88	
SIBIU	32056	1,9	7844	776	48	22580	655	34	119	
SUCEAVA	42299	2,6	20238	438	8	20800	583	30	202	
TELEORMAN	18635	1,1	6440	272	399	10938	413	21	152	
TIMIS	58088	3,5	9405	609	27	46624	1245	38	140	
TULCEA	17000	1,0	5872	1363	114	9094	473	18	66	
VASLUI	21069	1,3	10149	90	12	10289	404	16	109	
VALCEA	27299	1,6	10752	364	6	15485	484	40	168	
VRANCEA	20443	1,2	6245	356	10	13265	447	16	104	
MUN. BUCURESTI	313833	19,0	20117	1033	297	285345	6787	115	138	
ILFOV	26887	1,6	3425	49	31	22663	606	21	92	

Table no. 6

**The number of incorporations in the Trade Register, by field of activity*
during the period of December 1990 - August 2007**

CAEN segment	Field of activity	Total		out of which:						
				PF+AF	companies: 1220918				RA	OC
		No.	%		No.	SNC	SCS	SRL		
				No.		No.	No.	No.	No.	No.
0	1	2	3	4	5	6	7	8	9	10
	Total ROMANIA	1642735	100,0	423636	32655	1567	1145896	32232	1346	5397
1	Agriculture, hunting and related service activities	65784	4,0	17022	2024	44	42734	3790	53	117
2	Forestry, logging and related service activities	8736	0,5	1150	152	3	7107	222	94	8
5	Fishing, fish farming and related service activities	3279	0,2	1882	17	3	1323	54		
10	Mining of coal and lignite; extraction of peat	120	0,0	2			82	32	4	
11	Extraction of crude petroleum and natural gas; service activities incidental to oil and gas extraction, excluding surveying	358	0,0	19	1		168	124	46	
12	Mining of uranium and thorium ores	133	0,0	32			95	6		
13	Mining of metal ores	537	0,0	163			311	55	8	
14	Other mining and quarrying	1733	0,1	110	9	1	1440	170	2	1
15	Manufacture of food products and beverages	74150	4,5	14801	3260	149	53827	1860	5	248
16	Manufacture of tobacco products	292	0,0	47			213	31	1	
17	Manufacture of textiles	11911	0,7	2433	556	16	8355	406		145
18	Manufacture of wearing apparel; dressing and dyeing of fur	21360	1,3	4884	875	38	14899	358	1	305
19	Tanning and dressing of leather; manufacture of luggage, handbags, saddlery, harness and footwear	5421	0,3	925	112	6	4203	123	1	51
20	Manufacture of wood and of products of wood and cork, except furniture; manufacture of articles of straw and plaiting materials	25790	1,6	9214	575	29	15422	499	9	42
21	Manufacture of pulp, paper and paper products	1842	0,1	128	21	1	1581	98		13
22	Publishing, printing and reproduction of recorded media	12206	0,7	984	317	21	10454	406	14	10
23	Manufacture of coke, refined petroleum products and nuclear fuel	263	0,0	24			203	34	2	
24	Manufacture of chemicals and chemical products	3785	0,2	120	89	1	3185	378	6	6
25	Manufacture of rubber and plastic products	6476	0,4	583	314	7	5287	260		24
26	Manufacture of other non-metallic mineral products	9688	0,6	2988	212	6	6075	388	5	14
27	Manufacture of basic metals	2468	0,2	174	39	3	2034	208	3	7
28	Manufacture of fabricated metal products, except machinery and equipment	18081	1,1	4545	361	23	12354	725	11	62
29	Manufacture of machinery and equipment n.e.c.	3909	0,2	113	44	7	3300	421	19	5
30	Manufacture of office machinery and computers	1792	0,1	16	25	4	1667	80		
31	Manufacture of electrical machinery and apparatus n.e.c.	1985	0,1	112	44	6	1673	144		6
32	Manufacture of radio, television and communication equipment and apparatus	884	0,1	64	14	4	728	73		1
33	Manufacture of medical, precision and optical instruments, watches and clocks	2733	0,2	653	17	2	1952	105		4
34	Manufacture of motor vehicles, trailers and semi-trailers	937	0,1	31	31	3	744	126		2
35	Manufacture of other transport equipment	2006	0,1	294	86	7	1419	125	73	2
36	Manufacture of furniture; manufacturing n.e.c.	16140	1,0	4610	284	16	10730	337	5	158
37	Recycling	5143	0,3	447	51	5	4464	175		1
40	Electricity, gas, steam and hot water supply	3075	0,2	839	3	1	1604	539	89	
41	Collection, purification and distribution of water	3584	0,2	1632	2		1660	217	73	
45	Construction	107225	6,5	28026	611	44	75956	2457	54	77

*)Field of activity declared when registered, according to CAEN classification

Table no. 6
(continuing)

**The number of incorporations in the Trade Register, by field of activity*
and categories, during the period of December 1990 - August 2007**

CAEN segment	Field of activity	Total		out of which:						RA	OC
				PF+AF	companies: 1220918						
					SNC	SCS	SRL	SA			
					No.	No.	No.	No.			
0	1	2	3	4	5	6	7	8	9	10	
	Total ROMÂNIA	1642735	100,0	423636	32655	1567	1145896	32232	1346	5397	
50	Sale, maintenance and repair of motor vehicles and motorcycles; retail sale of automotive fuel	56319	3,4	8979	1244		44987	1027	6	42	
51	Wholesale trade and commission trade, except of motor vehicles and motorcycles	210250	12,8	19257	4524	151	182686	3315	35	282	
52	Retail trade, except of motor vehicles and motorcycles; repair of personal and household goods	513735	31,3	182890	11915	558	313482	2498	6	2385	
55	Hotels and restaurants	63278	3,9	14935	1635	126	45624	790	73	95	
60	Land transport; transport via pipelines	85949	5,2	37017	845	37	46947	1060	33	10	
61	Water transport	891	0,1	173	82	8	493	64	70	1	
62	Air transport	306	0,0	18			230	48	10		
63	Supporting and auxiliary transport activities; activities of travel agencies	10974	0,7	759	220	14	9432	442	96	11	
64	Post and telecommunications	7942	0,5	910	11	1	6699	307	11	3	
65	Financial intermediation, except insurance and pension funding	6731	0,4	148	15		3048	2485	2	1033	
66	Insurance and pension funding, except compulsory social security	2075	0,1	616	1		515	942		1	
67	Activities auxiliary to financial intermediation	7490	0,5	1302	7	2	5878	293		8	
70	Real estate activities	27478	1,7	801	29	9	25943	672	17	7	
71	Renting of machinery and equipment without operator and of personal and household goods	3838	0,2	724	116	8	2821	98	70	1	
72	Computer and related activities	25826	1,6	5722	120	13	19581	385	2	3	
73	Research and development	1808	0,1	253	11	2	1324	173	43	2	
74	Other business activities	120462	7,3	25412	794	74	92325	1690	106	60	
75	Public administration and defence; compulsory social security	368	0,0	92	5		222	26	22	1	
80	Education	7685	0,5	3936	62	6	3615	66			
85	Health and social work	16894	1,0	2156	233	15	14401	85	3	1	
90	Sewage and refuse disposal, sanitation and similar activities	1015	0,1	109	13	2	761	110	18		
91	Activities of membership organizations n.e.c.	215	0,0	95	1		101	15		3	
92	Recreational, cultural and sporting activities	18099	1,1	5062	202	14	12437	303	69	12	
93	Other service activities	28230	1,7	12503	418	42	14757	307	76	126	
95	Activities of households as employers of domestic staff	965	0,1	637	6	1	317	3		1	
96	Extra-territorial organizations and bodies	11	0,0	11							

*)Field of activity declared when registered, according to CAEN classification

Table no. 7

**Operations carried on with the Trade Registers,
by counties and categories,
in August 2007**

County	Total of operations carried on		out of which:							
			New incorporations		Changes in statutory documents		out of which: of liquidation, dissolution		Strike off companies	
	No.	%	No.	%	No.	%	No.	%	No.	%
0	1	2	3	4	5	6	7	8	9	10
Total ROMÂNIA	114819	100,0	11841	10,3	100194	87,3	4404	3,8	2784	2,4
ALBA	757	100,0	198	26,2	543	71,7	4	0,5	16	2,1
ARAD	10051	100,0	305	3,0	9706	96,6	10	0,1	40	0,4
ARGES	1794	100,0	299	16,7	1456	81,2	106	5,9	39	2,2
BACAU	1816	100,0	265	14,6	1500	82,6	224	12,3	51	2,8
BIHOR	1389	100,0	400	28,8	947	68,2	36	2,6	42	3,0
BISTRITA-NASAUD	971	100,0	178	18,3	737	75,9	101	10,4	56	5,8
BOTOSANI	493	100,0	146	29,6	325	65,9	1	0,2	22	4,5
BRASOV	2798	100,0	415	14,8	2347	83,9	33	1,2	36	1,3
BRAILA	740	100,0	143	19,3	561	75,8	14	1,9	36	4,9
BUZAU	1001	100,0	185	18,5	771	77,0	491	49,1	45	4,5
CARAS-SEVERIN	758	100,0	170	22,4	568	74,9	17	2,2	20	2,6
CALARASI	293	100,0	103	35,2	185	63,1	7	2,4	5	1,7
CLUJ	3353	100,0	646	19,3	2616	78,0	57	1,7	91	2,7
CONSTANTA	21773	100,0	496	2,3	20882	95,9	13	0,1	395	1,8
COVASNA	610	100,0	105	17,2	488	80,0	2	0,3	17	2,8
DAMBOVITA	931	100,0	181	19,4	710	76,3	292	31,4	40	4,3
DOLJ	1585	100,0	290	18,3	1232	77,7	17	1,1	63	4,0
GALATI	1495	100,0	276	18,5	1188	79,5	184	12,3	31	2,1
GIURGIU	3269	100,0	115	3,5	3146	96,2	8	0,2	8	0,2
GORJ	607	100,0	134	22,1	446	73,5	11	1,8	27	4,4
HARGHITA	1201	100,0	227	18,9	934	77,8	102	8,5	40	3,3
HUNEDOARA	8799	100,0	183	2,1	8583	97,5	4	0,0	33	0,4
IALOMITA	603	100,0	112	18,6	477	79,1			14	2,3
IASI	2655	100,0	438	16,5	2092	78,8	54	2,0	125	4,7
MARAMURES	1623	100,0	307	18,9	1223	75,4	146	9,0	93	5,7
MEHEDINTI	308	100,0	76	24,7	221	71,8	4	1,3	11	3,6
MURES	1274	100,0	315	24,7	835	65,5	571	44,8	124	9,7
NEAMT	1774	100,0	242	13,6	1414	79,7	105	5,9	118	6,7
OLT	657	100,0	124	18,9	515	78,4	28	4,3	18	2,7
PRAHOVA	2586	100,0	442	17,1	1990	77,0	629	24,3	154	6,0
SALAJ	621	100,0	153	24,6	425	68,4	45	7,2	43	6,9
SATU MARE	7525	100,0	193	2,6	7119	94,6	183	2,4	213	2,8
SIBIU	1758	100,0	249	14,2	1459	83,0	18	1,0	50	2,8
SUCEAVA	3360	100,0	256	7,6	3052	90,8	271	8,1	52	1,5
TELEORMAN	467	100,0	131	28,1	295	63,2	88	18,8	41	8,8
TIMIS	1839	100,0	451	24,5	1352	73,5	12	0,7	36	2,0
TULCEA	892	100,0	85	9,5	791	88,7	184	20,6	16	1,8
VASLUI	391	100,0	112	28,6	265	67,8	1	0,3	14	3,6
VALCEA	1060	100,0	172	16,2	830	78,3	6	0,6	58	5,5
VRANCEA	930	100,0	114	12,3	692	74,4	7	0,8	124	13,3
MUN. BUCURESTI	15527	100,0	2117	13,6	13124	84,5	315	2,0	286	1,8
ILFOV	2485	100,0	292	11,8	2152	86,6	3	0,1	41	1,6

*) by effect of implementation of Law no. 314/2001, art.1 and art. 6

*** Less than 0,01%

Table no. 8

**The number of incorporations in the Trade Register,
by counties and sources of capital,
in August 2007**

County	Total		out of which:					Rnking by: *	
			Private capital			State majority capital			Mixed capital (state+priva)
			out of which:			out of which:			
			PF+AF	Companies	OC	RA	Companie s		Companie s
No.	%	No.	No.	No.	No.	No.	No.		
0	1	2	3	4	5	6	7	8	9
Total ROMÂNIA	11841	100,0	3278	8561		1	1		X
ALBA	198	1,7	72	126					21
ARAD	305	2,6	122	183					11
ARGES	299	2,5	83	216					12
BACAU	265	2,2	72	193					16
BIHOR	400	3,4	159	241					8
BISTRITA-NASAUD	178	1,5	68	110					26
BOTOSANI	146	1,2	72	74					30
BRASOV	415	3,5	117	297		1			7
BRAILA	143	1,2	44	99					31
BUZAU	185	1,6	55	130					23
CARAS-SEVERIN	170	1,4	74	96					28
CALARASI	103	0,9	42	61					40
CLUJ	646	5,5	208	438					2
CONSTANTA	496	4,2	108	388					3
COVASNA	105	0,9	42	63					39
DAMBOVITA	181	1,5	70	111					25
DOLJ	290	2,4	76	214					14
GALATI	276	2,3	71	205					15
GIURGIU	115	1,0	21	94					35
GORJ	134	1,1	39	95					32
HARGHITA	227	1,9	118	109					20
HUNEDOARA	183	1,5	27	156					24
IALOMITA	112	0,9	36	76					37
IASI	438	3,7	140	298					6
MARAMURES	307	2,6	86	221					10
MEHEDINTI	76	0,6	14	62					42
MURES	315	2,7	119	196					9
NEAMT	242	2,0	90	152					19
OLT	124	1,0	31	93					34
PRAHOVA	442	3,7	165	277					5
SALAJ	153	1,3	60	93					29
SATU MARE	193	1,6	61	132					22
SIBIU	249	2,1	78	171					18
SUCEAVA	256	2,2	110	146					17
TELEORMAN	131	1,1	34	96			1		33
TIMIS	451	3,8	69	382					4
TULCEA	85	0,7	28	57					41
VASLUI	112	0,9	33	79					38
VALCEA	172	1,5	51	121					27
VRANCEA	114	1,0	32	82					36
MUN. BUCURESTI	2117	17,9	263	1854					1
ILFOV	292	2,5	18	274					13

*) The total number of incorporations (col 1)

*** Less than 0,01%

Table no.9

**The number of incorporations in the Trade Register,
by counties and category
in August 2007**

County	Total		out of which:						RA	OC
			PF+AF	companies: 8562						
	No.	%		No.	SNC	SCS	SRL	SA	No.	No.
			No.		No.	No.	No.			
0	1	2	3	4	5	6	7	8	9	
Total ROMÂNIA	11841	100,0	3278	1	1	8487	73	1		
ALBA	198	1,7	72			124	2			
ARAD	305	2,6	122			182	1			
ARGES	299	2,5	83		1	215				
BACAU	265	2,2	72			193				
BIHOR	400	3,4	159			240	1			
BISTRITA-NASAUD	178	1,5	68			109	1			
BOTOSANI	146	1,2	72			74				
BRASOV	415	3,5	117			295	2	1		
BRAILA	143	1,2	44			99				
BUZAU	185	1,6	55			128	2			
CARAS-SEVERIN	170	1,4	74			95	1			
CALARASI	103	0,9	42			60	1			
CLUJ	646	5,5	208			436	2			
CONSTANTA	496	4,2	108			386	2			
COVASNA	105	0,9	42			62	1			
DAMBOVITA	181	1,5	70			111				
DOLJ	290	2,4	76			213	1			
GALATI	276	2,3	71			204	1			
GIURGIU	115	1,0	21			94				
GORJ	134	1,1	39			94	1			
HARGHITA	227	1,9	118			108	1			
HUNEDOARA	183	1,5	27			154	2			
IALOMITA	112	0,9	36			76				
IASI	438	3,7	140			298				
MARAMURES	307	2,6	86			219	2			
MEHEDINTI	76	0,6	14			62				
MURES	315	2,7	119			194	2			
NEAMT	242	2,0	90			151	1			
OLT	124	1,0	31			92	1			
PRAHOVA	442	3,7	165			275	2			
SALAJ	153	1,3	60			92	1			
SATU MARE	193	1,6	61			131	1			
SIBIU	249	2,1	78			169	2			
SUCEAVA	256	2,2	110			146				
TELEORMAN	131	1,1	34			96	1			
TIMIS	451	3,8	69			380	2			
TULCEA	85	0,7	28			57				
VASLUI	112	0,9	33			78	1			
VALCEA	172	1,5	51			120	1			
VRANCEA	114	1,0	32			82				
MUN. BUCURESTI	2117	17,9	263	1		1828	25			
ILFOV	292	2,5	18			265	9			

Table no. 10

**The number of incorporations in the Trade Register, by field of activity*
and categories in August 2007**

CAEN segment	Field of activity	Total		out of which:						RA	OC
				PF+AF	companies: 8562						
		SNC	SCS		SRL	SA	No.	No.			
		No.	%	No.	No.	No.			No.	No.	No.
0	1	2	3	4	5	6	7	8	9	10	
	Total ROMÂNIA	11672	100,0	3535			8036	97	4		
1	Agriculture, hunting and related service activities	299	2,6	182			117				
2	Forestry, logging and related service activities	42	0,4	8			33		1		
5	Fishing, fish farming and related service activities	30	0,3	13			17				
10	Mining of coal and lignite; extraction of peat										
11	Extraction of crude petroleum and natural gas; service activities incidental to oil and gas extraction, excluding surveying	5	0,0	3			2				
12	Mining of uranium and thorium ores										
13	Mining of metal ores										
14	Other mining and quarrying	24	0,2	1			23				
15	Manufacture of food products and beverages	99	0,8	42			56	1			
16	Manufacture of tobacco products	1	0,0				1				
17	Manufacture of textiles	31	0,3	10			21				
18	Manufacture of wearing apparel; dressing and dyeing of fur	66	0,6	20			46				
19	Tanning and dressing of leather; manufacture of luggage, handbags, saddlery, harness and footwear	14	0,1	2			12				
20	Manufacture of wood and of products of wood and cork, except furniture; manufacture of articles of straw and plaiting materials	116	1,0	42			74				
21	Manufacture of pulp, paper and paper products	5	0,0	1			4				
22	Publishing, printing and reproduction of recorded media	60	0,5	6			53	1			
23	Manufacture of coke, refined petroleum products and nuclear fuel										
24	Manufacture of chemicals and chemical products	11	0,1				11				
25	Manufacture of rubber and plastic products	34	0,3	2			32				
26	Manufacture of other non-metallic mineral products	81	0,7	30			49	2			
27	Manufacture of basic metals	2	0,0	1			1				
28	Manufacture of fabricated metal products, except machinery and equipment	109	0,9	43			66				
29	Manufacture of machinery and equipment n.e.c.	22	0,2	2			20				
30	Manufacture of office machinery and computers	4	0,0				4				
31	Manufacture of electrical machinery and apparatus n.e.c.	4	0,0				4				
32	Manufacture of radio, television and communication equipment and apparatus	2	0,0	1			1				
33	Manufacture of medical, precision and optical instruments, watches and clocks	16	0,1	5			11				
34	Manufacture of motor vehicles, trailers and semi- trailers	1	0,0				1				
35	Manufacture of other transport equipment	20	0,2	2			18				
36	Manufacture of furniture; manufacturing n.e.c.	68	0,6	30			37	1			
37	Recycling	42	0,4	5			37				
40	Electricity, gas, steam and hot water supply	34	0,3				26	7	1		
41	Collection, purification and distribution of water	13	0,1	1			1	11			
45	Construction	1799	15,4	457			1338	3	1		

Table no. 10
(continuance)

**The number of incorporations in the Trade Register, by field of activity*
and categories in August 2007**

CAEN segment	Field of activity	Total		out of which:						
				PF+AF	companies: 8562				RA	OC
		No.	%		No.	SNC	SCS	SRL		
				No.		No.	No.	No.	No.	No.
0	1	2	3	4	5	6	7	8	9	10
	Total ROMÂNIA	11672	100,0	3535			8036	97	4	
50	Sale, maintenance and repair of motor vehicles and motorcycles; retail sale of automotive fuel	295	2,5	52			243			
51	Wholesale trade and commission trade, except of motor vehicles and motorcycles	1044	8,9	209			833	2		
52	Retail trade, except of motor vehicles and motorcycles; repair of personal and household goods	2096	18,0	902			1193	1		
55	Hotels and restaurants	465	4,0	112			352	1		
60	Land transport; transport via pipelines	680	5,8	197			482	1		
61	Water transport	5	0,0	2			3			
62	Air transport	2	0,0				2			
63	Supporting and auxiliary transport activities; activities of travel agencies	77	0,7	12			65			
64	Post and telecommunications	116	1,0	34			80	2		
65	Financial intermediation, except insurance and pension funding	78	0,7	1			33	44		
66	Insurance and pension funding, except compulsory social security	7	0,1	2				5		
67	Activities auxiliary to financial intermediation	157	1,3	14			140	3		
70	Real estate activities	745	6,4	16			724	5		
71	Renting of machinery and equipment without operator and of personal and household goods	60	0,5	9			51			
72	Computer and related activities	344	2,9	167			177			
73	Research and development	16	0,1				16			
74	Other business activities	1650	14,1	507			1136	7		
75	Public administration and defence; compulsory social security	5	0,0	1			3		1	
80	Education	176	1,5	134			42			
85	Health and social work	91	0,8	7			84			
90	Sewage and refuse disposal, sanitation and similar activities	12	0,1	2			10			
91	Activities of membership organizations n.e.c.	1	0,0	1						
92	Recreational, cultural and sporting activities	201	1,7	81			120			
93	Other service activities	288	2,5	158			130			
95	Activities of households as employers of domestic staff	5	0,0	4			1			
96	Extra-territorial organizations and bodies									

*)Field of activity declared when registered, according to CAEN classification

Table no. 11

**Number of companies registered and the amount
of subscribed capital, by county in August 2007**

County	Total registered companies		Subscribed capital		Average subscribed capital on company
	No.	%	thousand RONI	%	thousand RONI
0	1	2	3	4	5
Total ROMÂNIA	8562	100,0	242921,3	100,0	28,5
ALBA	126	1,5	703,2	0,3	5,6
ARAD	183	2,1	4162,5	1,7	22,9
ARGES	216	2,5	1277,6	0,5	5,9
BACAU	193	2,3	447,4	0,2	2,3
BIHOR	241	2,8	1580,4	0,7	6,6
BISTRITA-NASAUD	110	1,3	45062,3	18,6	413,4
BOTOSANI	74	0,9	110,3	0,0	1,5
BRASOV	297	3,5	20692,5	8,5	69,9
BRAILA	99	1,2	37,4	0,0	0,4
BUZAU	130	1,5	70,3	0,0	0,5
CARAS-SEVERIN	96	1,1	1714,4	0,7	18,0
CALARASI	61	0,7	41,6	0,0	0,7
CLUJ	438	5,1	3875,9	1,6	8,9
CONSTANTA	388	4,5	560,2	0,2	1,5
COVASNA	63	0,7	129,8	0,1	2,1
DAMBOVITA	111	1,3	53,0	0,0	0,5
DOLJ	214	2,5	270,0	0,1	1,3
GALATI	205	2,4	3513,1	1,4	17,2
GIURGIU	94	1,1	99,9	0,0	1,1
GORJ	95	1,1	487,8	0,2	5,1
HARGHITA	109	1,3	369,3	0,2	3,5
HUNEDOARA	156	1,8	1985,9	0,8	12,8
IALOMITA	76	0,9	201,7	0,1	2,7
IASI	298	3,5	909,6	0,4	3,1
MARAMURES	221	2,6	724,1	0,3	3,3
MEHEDINTI	62	0,7	13,3	***	0,2
MURES	196	2,3	1333,1	0,5	6,8
NEAMT	152	1,8	2930,2	1,2	19,4
OLT	93	1,1	28,5	0,0	0,3
PRAHOVA	277	3,2	862,6	0,4	3,1
SALAJ	93	1,1	37,5	0,0	0,4
SATU MARE	132	1,5	115,3	0,0	0,9
SIBIU	171	2,0	1248,0	0,5	7,4
SUCEAVA	146	1,7	69,2	0,0	0,5
TELEORMAN	97	1,1	244,4	0,1	2,5
TIMIS	382	4,5	1558,7	0,6	4,1
TULCEA	57	0,7	25,9	0,0	0,5
VASLUI	79	0,9	33,8	0,0	0,4
VALCEA	121	1,4	94,4	0,0	0,8
VRANCEA	82	1,0	27,0	0,0	0,3
MUN. BUCURESTI	1854	21,7	99780,9	41,1	54,3
ILFOV	274	3,2	45438,2	18,7	168,9

Note: The average does not include filials because according to the Law no.31/1990 they are not juridical persons

*** Less than 0,01%

Table no. 12

**Number of registered companies and the amount
of subscribed capital by category,
in August 2007**

Company type	Total registered companies		Subscribed capital		Average subscribed capital on company
	No.	%	thousand RONI	%	thousand RONI
0	1	2	3	4	5
Total ROMÂNIA	8562	100,0	242921,3	100,0	28,5
SNC	1	0,0	3,0	***	3,0
SCS	1	0,0	0,3	***	0,0
SA	73	0,9	77506,7	31,9	1139,8
SRL	8487	99,1	165411,3	68,1	19,5
SCA					

Note: The average does not include filials because according to the Law no.31/1990 they are not juridical persons

*** Less than 0,01%

Diagram no.5

