



MINISTRY OF JUSTICE

THE NATIONAL TRADE REGISTER OFFICE

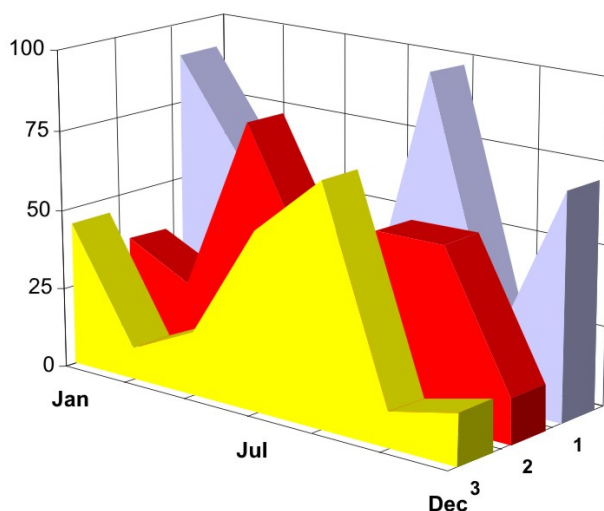
București, Bd. Unirii nr. 74, Bl. J3b, tronson II+III, sector 3; Telefon: +40 21 316.08.04, 316.08.10; Fax: +40 21 316.08.03; Cod poștal: 030837
Website: www.onrc.ro; E-mail: onrc@onrc.ro; Cod de identificare Fiscală: 14942091

PROCEEDINGS IN THE CENTRAL TRADE REGISTER

STATISTICAL SYNTHESIS

OF

**RECORDS IN THE CENTRAL TRADE REGISTER
- the 31th of July 2007 - provisional data -**



- ISSUE No. 188 -

**MINISTRY OF JUSTICE
THE NATIONAL TRADE REGISTER OFFICE**

- Operations of incorporation of companies, changes in statutory documents and strike-off of companies are based on Law No.26/1990 reissued, Law No.31/1990, reissued, OUG No.76/2001, reissued and Methodology Norms No. P/608/1998.

- This paper presents the trend in operations registered in The Trade Register Office attached to the law court of Bucharest and in the Trade Register Offices attached to the law court in each county of Romania.

- Information recorded in the Central Trade Register concern operations compulsory by law to be registered in the trade registers within the 42 trade register offices attached to the law courts.

• No part of the content of this publication, in original or in any modified format, September be reproduced, stored in a retrieval system, or transmitted, in any form or by any means, without the prior permission in writing of The Ministry of Justice – The National Trade Register Office.

• The content of this publication September be referred to in articles, studies, books, as supporting or explanatory data under the condition only, the source of the information to be clearly and precisely specified.

1	Explanatory Note	1
2.1	Data for December 1990 –July 2007	3
	Table no.1 – Operations registered in the Trade Register, by categories during the period of December 1990 –July 2007, in total by country and counties, rate of categories of operations in total operations country	3
	Table no.1.a – Operations registered in the Trade Register, by categories during the period of December 1990 –July 2007, in total by country and counties, counties’ rate in total country	4
	Table no. 3 – Number and structure of incorporations in the Trade Register, by years, during the period of December 1990-July 2007	5
	Table no.4 – The number of incorporations in the Trade Register, by counties and sources of capital, in the period December 1990 -July 2007	6
	Table no. 5 – The number of incorporations in the Trade Register, by counties and categories, during the period of December 1990 –July 2007	7
	Table no. 6 – The number of incorporations in the Trade Register, by field of activity and categories, during the period of December 1990 -July 2007	8
2.2	Data for July 2007	10
	Table no. 7 – Operations carried on with the Trade Registers, by counties and categories, in July 2007	10
	Table no. 8 – The number of incorporations in the Trade Register, by counties and sources of capital, in July 2007	11
	Table no. 9 – The number of incorporations in the Trade Register, by counties and category in July 2007	12
	Table no. 10 –The number of incorporations in the Trade Register, by field of activity and categories in July 2007	13
	Table no. 11 – Number of companies registered and the amount of subscribed capital, by county in July 2007	15
	Table no. 12– Number of registered companies and the amount of subscribed capital by category, in July 2007	16
	Diagram no. 5 – Average subscribed capital on company in July 2007	16

The Trade Register Office is set-up by Law No. 26/1990, reissued and modified by OUG No. 129/2002, became an active institution since December 1990 and is structured in two levels:

- the national level, represented by the National Trade Register Office organised under the Ministry of Justice
- the local level, represented by the 42 trade register offices attached to the law courts and co-ordinated by the National Trade Register Office

The categories of businessmen compulsory to register in the trade register are:

- natural persons tradesmen and family associations doing usually commercial acts, commercial companies, national companies, companies under state supervision, and co-operative organisations
- subsidiaries registered as commercial companies and legal persons following the legal proceedings of set-up, activity and incorporation according to the type of the legally set-up company.

Usual Terms:

- incorporation – represents the registration of the company in the trade registry awarding the quality of legal person.

- other statutory documents – represent the official registration of the changes occurred in a company's life, such as: changes in headquarters' address, increase or decrease of the issued capital, merger, liquidation, strike-off, etc.

- strike-off – represents the removal of a company from the trade registry, due to dissolution and liquidation, being also the very moment the company loses its quality of legal person. Data also include the companies under the provisions of Law No. 314/2001.

- change of certificate – represents the obligation of companies set-up before OGU No. 76/2001 republished came in force, to request the incorporation certificate and fiscal registration certificate to be replaced with the new registration certificate containing the given unique registration code.

The ratio of these changes is being calculated as a proportion between the effective number of changes and the number of active companies due to operate the change.

- active company from the legal point of view – a company registered in the trade register and which is not affected by any of the situations leading to the temporary or permanently loss of this status (e.g. dissolution, liquidation, strike-off)

- operations represent all the records in the trade registry including incorporations, other statutory documents and strike-off of companies, irrespective of the object of activity, company's type and origin of the subscribed capital (local or foreign investment).

• **Terms used in tables and charts**

➤ **Number of companies:** represents, depending on the specific table, the number of companies incorporated in the related period, the number of companies being struck-off from the trade registry.

➤ **Amount of the subscribed capital:**

- **total, in local currency:** the amount of the subscribed capital resulted from totalising the amount subscribed (in cash and in kind) in local currency (ROL)

➤ **Regional development:**

North-East: Suceava, Botoșani, Neamț, Iași, Bacău, Vaslui.

South-East: Vrancea, Galați, Buzău, Brăila, Tulcea, Constanța.

South-Muntenia: Argeș, Dâmbovița, Prahova, Teleorman, Giurgiu, Călărași, Ialomița.

South-West Oltenia: Gorj, Vâlcea, Dolj, Mehedinți, Olt.

West: Arad, Caraș-Severin, Hunedoara, Timiș.

North-West: Bihor, Bistrița, Cluj, Satu Mare, Sălaj, Maramureș.

Center: Alba, Brașov, Covasna, Harghita, Mureș, Sibiu.

Bucharest-Ilfov: București, Ilfov.

CAEN code – The Classification of Activities in the National Economy was approved by HG No. 656/1997, modified by Order No 601 of the President of National Institute of Statistics being compatible with the international classification used in statistic reports and official documents. Activities are ranked upon homogeneity principle by sections, divisions, groups and classes.

Common abbreviations

- **PF** - Natural Persons Tradesman
- **AF** - Family association
- **SNC** - General Partnership
- **SCS** - Limited Partnership
- **SA** - Joint stock company
- **SRL** - Limited liability company
- **RA** - Company Under State Supervision
- **OC** - Co-operative organisation

Source:

The integrated IT system of the trade registry is designed by The National Trade Registry Office according to the provisions of the related legislation in force. The source of information is the computerised system of the trade registers handled by the Trade Register Offices attached to the law courts.

Table no. 1

**Operations registered in the Trade Register, by categories
during the period of December 1990 - July 2007 in total by country and counties,
- rate of categories of operations in total operations/country -**

Counties	Total of registered operations		out of which :							
			Registered companies		Changes in statutory documents		out of which : of liquidation, dissolution		Strike off companies	
	No.	%	No.	%	No.	%	No.	%	No.	%
0	1	2	3	4	5	6	7	8	11	12
Total ROMÂNIA	8600923	100,0	1642733	100,0	6460595	100,0	9911	100,0	497595	100,0
ALBA	113411	1,3	25753	1,6	82977	1,3	371	3,7	4681	0,9
ARAD	188513	2,2	40409	2,5	138089	2,1	369	3,7	10015	2,0
ARGES	210729	2,5	42347	2,6	159541	2,5	197	2,0	8841	1,8
BACAU	202230	2,4	41174	2,5	149379	2,3	1003	10,1	11677	2,3
BIHOR	252882	2,9	49675	3,0	189024	2,9	303	3,1	14183	2,9
BISTRITA-NASAUD	105459	1,2	20007	1,2	79393	1,2	72	0,7	6059	1,2
BOTOSANI	80549	0,9	20238	1,2	54756	0,8	66	0,7	5555	1,1
BRASOV	289286	3,4	51202	3,1	226980	3,5	149	1,5	11104	2,2
BRAILA	108452	1,3	22561	1,4	82478	1,3	61	0,6	3413	0,7
BUZAU	159374	1,9	30142	1,8	118952	1,8	146	1,5	10280	2,1
CARAS-SEVERIN	109598	1,3	20244	1,2	81274	1,3	41	0,4	8080	1,6
CALARASI	73997	0,9	16458	1,0	52718	0,8	79	0,8	4821	1,0
CLUJ	384472	4,5	75726	4,6	295734	4,6	197	2,0	13012	2,6
CONSTANTA	362724	4,2	68890	4,2	268832	4,2	926	9,3	25002	5,0
COVASNA	78378	0,9	14054	0,9	60011	0,9	18	0,2	4313	0,9
DAMBOVITA	130875	1,5	30696	1,9	86936	1,3	98	1,0	13243	2,7
DOLJ	226040	2,6	43394	2,6	170273	2,6	215	2,2	12373	2,5
GALATI	237849	2,8	38756	2,4	185340	2,9	125	1,3	13753	2,8
GIURGIU	56857	0,7	13314	0,8	38600	0,6	47	0,5	4943	1,0
GORJ	110653	1,3	19600	1,2	84962	1,3	48	0,5	6091	1,2
HARGHITA	126992	1,5	25157	1,5	97420	1,5	51	0,5	4415	0,9
HUNEDOARA	164155	1,9	33694	2,1	117194	1,8	126	1,3	13267	2,7
IALOMITA	82119	1,0	15328	0,9	61129	0,9	78	0,8	5662	1,1
IASI	291648	3,4	50838	3,1	229429	3,6	597	6,0	11381	2,3
MARAMURES	179850	2,1	42183	2,6	127201	2,0	159	1,6	10466	2,1
MEHEDINTI	86022	1,0	18495	1,1	59672	0,9	55	0,6	7855	1,6
MURES	233262	2,7	41394	2,5	178966	2,8	83	0,8	12902	2,6
NEAMT	184933	2,2	36260	2,2	134722	2,1	304	3,1	13951	2,8
OLT	110310	1,3	23145	1,4	78309	1,2	21	0,2	8856	1,8
PRAHOVA	301274	3,5	54313	3,3	232241	3,6	274	2,8	14720	3,0
SALAJ	74282	0,9	15928	1,0	53743	0,8	29	0,3	4611	0,9
SATU MARE	133675	1,6	27728	1,7	96206	1,5	26	0,3	9741	2,0
SIBIU	188964	2,2	31807	1,9	149827	2,3	31	0,3	7330	1,5
SUCEAVA	211545	2,5	42043	2,6	153400	2,4	29	0,3	16102	3,2
TELEORMAN	93706	1,1	18504	1,1	70836	1,1	49	0,5	4366	0,9
TIMIS	314125	3,7	57637	3,5	240634	3,7	271	2,7	15854	3,2
TULCEA	86271	1,0	16915	1,0	64310	1,0	149	1,5	5046	1,0
VASLUI	96521	1,1	20957	1,3	67234	1,0	197	2,0	8330	1,7
VALCEA	135511	1,6	27127	1,7	100243	1,6	138	1,4	8141	1,6
VRANCEA	108710	1,3	20329	1,2	84122	1,3	51	0,5	4259	0,9
MUN. BUCURESTI	1796009	20,9	311716	19,0	1371680	21,2	2641	26,6	112613	22,6
ILFOV	118711	1,4	26595	1,6	85828	1,3	21	0,2	6288	1,3

*) according to the effect of Law No. 314/2001, art.1 și art. 6

*** Less than 0,01%

Table no. 2

**Operations registered in the Trade Register, by categories
during the period of December 1990 - July 2007, in total by country and counties,
- rate of categories of operations in total operations/country -**

Counties	Total of registered operations		out of which :							
			Registered companies		Changes in statutory documents		out of which : of liquidation, dissolution		Strike off companies	
	No.	%	No.	%	No.	%	No.	%	No.	%
0	1	2	3	4	5	6	7	8	11	12
Total ROMÂNIA	8600923	100,0	1642733	19,1	6460595	75,1	9911	0,1	497595	5,8
ALBA	113411	100,0	25753	22,7	82977	73,2	371	0,3	4681	4,1
ARAD	188513	100,0	40409	21,4	138089	73,3	369	0,2	10015	5,3
ARGES	210729	100,0	42347	20,1	159541	75,7	197	0,1	8841	4,2
BACAU	202230	100,0	41174	20,4	149379	73,9	1003	0,5	11677	5,8
BIHOR	252882	100,0	49675	19,6	189024	74,7	303	0,1	14183	5,6
BISTRITA-NASAUD	105459	100,0	20007	19,0	79393	75,3	72	0,1	6059	5,7
BOTOSANI	80549	100,0	20238	25,1	54756	68,0	66	0,1	5555	6,9
BRASOV	289286	100,0	51202	17,7	226980	78,5	149	0,1	11104	3,8
BRAILA	108452	100,0	22561	20,8	82478	76,1	61	0,1	3413	3,1
BUZAU	159374	100,0	30142	18,9	118952	74,6	146	0,1	10280	6,5
CARAS-SEVERIN	109598	100,0	20244	18,5	81274	74,2	41	0,0	8080	7,4
CALARASI	73997	100,0	16458	22,2	52718	71,2	79	0,1	4821	6,5
CLUJ	384472	100,0	75726	19,7	295734	76,9	197	0,1	13012	3,4
CONSTANTA	362724	100,0	68890	19,0	268832	74,1	926	0,3	25002	6,9
COVASNA	78378	100,0	14054	17,9	60011	76,6	18	0,0	4313	5,5
DAMBOVITA	130875	100,0	30696	23,5	86936	66,4	98	0,1	13243	10,1
DOLJ	226040	100,0	43394	19,2	170273	75,3	215	0,1	12373	5,5
GALATI	237849	100,0	38756	16,3	185340	77,9	125	0,1	13753	5,8
GIURGIU	56857	100,0	13314	23,4	38600	67,9	47	0,1	4943	8,7
GORJ	110653	100,0	19600	17,7	84962	76,8	48	0,0	6091	5,5
HARGHITA	126992	100,0	25157	19,8	97420	76,7	51	0,0	4415	3,5
HUNEDOARA	164155	100,0	33694	20,5	117194	71,4	126	0,1	13267	8,1
IALOMITA	82119	100,0	15328	18,7	61129	74,4	78	0,1	5662	6,9
IASI	291648	100,0	50838	17,4	229429	78,7	597	0,2	11381	3,9
MARAMURES	179850	100,0	42183	23,5	127201	70,7	159	0,1	10466	5,8
MEHEDINTI	86022	100,0	18495	21,5	59672	69,4	55	0,1	7855	9,1
MURES	233262	100,0	41394	17,7	178966	76,7	83	0,0	12902	5,5
NEAMT	184933	100,0	36260	19,6	134722	72,8	304	0,2	13951	7,5
OLT	110310	100,0	23145	21,0	78309	71,0	21	0,0	8856	8,0
PRAHOVA	301274	100,0	54313	18,0	232241	77,1	274	0,1	14720	4,9
SALAJ	74282	100,0	15928	21,4	53743	72,3	29	0,0	4611	6,2
SATU MARE	133675	100,0	27728	20,7	96206	72,0	26	0,0	9741	7,3
SIBIU	188964	100,0	31807	16,8	149827	79,3	31	0,0	7330	3,9
SUCEAVA	211545	100,0	42043	19,9	153400	72,5	29	0,0	16102	7,6
TELEORMAN	93706	100,0	18504	19,7	70836	75,6	49	0,1	4366	4,7
TIMIS	314125	100,0	57637	18,3	240634	76,6	271	0,1	15854	5,0
TULCEA	86271	100,0	16915	19,6	64310	74,5	149	0,2	5046	5,8
VASLUI	96521	100,0	20957	21,7	67234	69,7	197	0,2	8330	8,6
VALCEA	135511	100,0	27127	20,0	100243	74,0	138	0,1	8141	6,0
VRANCEA	108710	100,0	20329	18,7	84122	77,4	51	0,0	4259	3,9
MUN. BUCURESTI	1796009	100,0	311716	17,4	1371680	76,4	2641	0,1	112613	6,3
ILFOV	118711	100,0	26595	22,4	85828	72,3	21	0,0	6288	5,3

*) according to the effect of Law No. 314/2001, art.1 și art. 6

*** Less than 0,01%

Table no.3

**Number and structure of incorporations in the Trade Register, by years,
July 2007**

Period (year, month)	Registered companies		Percentage	
	No.	%	%	%
0	1	2	3	
Total, 31 July 2006, out of which	1642733	100,00		
Year 1990	81	0,00		
Year 1991	95840	5,83		
Year 1992	137456	8,37		
Year 1993	117078	7,13		
Year 1994	137445	8,37		
Year 1995	65479	3,99		
Year 1996	62089	3,78		
Year 1997	55663	3,39		
Year 1998	63878	3,89		
Year 1999	57197	3,48		
Year 2000	57291	3,49		
Year 2001	61265	3,73		
Year 2002	84780	5,16		
Year 2003	123582	7,52		
Year 2004	144284	8,78		
Year 2005	157375	9,58		
Year 2006	135211	8,23		
Year 2007 (I - XII) out of which :	86739			100,0
January	10979			12,7
February	13249			15,3
March	14721			17,0
April	10908			12,6
May	12749			14,7
June	12463			14,4
July	11670			13,5

Note: Column 2 reveals the annual structure of incorporations; column 3 reveals the structure by months during the current year.

*** Less than 0,01%
Diagram no.1

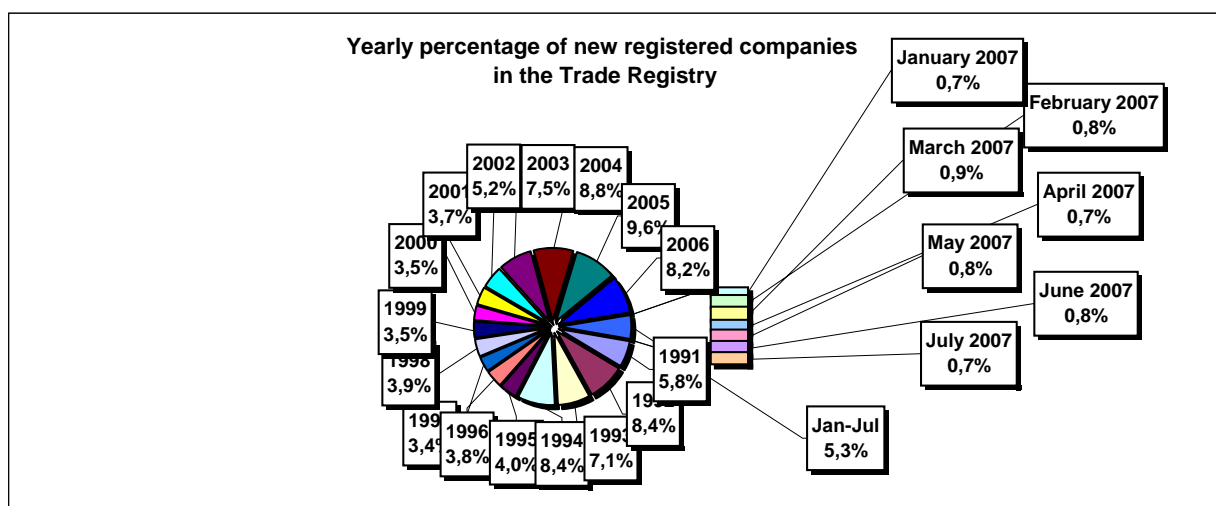


Table no. 4

The number of incorporations in the Trade Register, by counties and sources of capital, in the period December 1990 - July 2007

Counties	Total		out of which:					Ranking by: *	
			Private capital			State majority capital			Mixed capital (state+private)
			out of which:			out of which:			
			PF+AF	Companies	OC	RA	Companies		Companies
No.	%	No.	No.	No.	No.	No.	No.		
0	1	2	3	4	5	6	7	8	9
Total ROMÂNIA	1642733	100,0	423634	1201400	5397	1346	2366	8590	X
ALBA	25753	1,6	8896	16461	141	38	47	170	25
ARAD	40410	2,5	15378	24472	157	27	41	335	15
ARGES	42347	2,6	13689	28280	168	29	29	152	10
BACAU	41174	2,5	13633	27083	158	35	42	223	14
BIHOR	49675	3,0	11577	37545	146	37	62	308	8
BISTRITA-NASAUD	20007	1,2	7100	12652	98	19	29	109	33
BOTOSANI	20238	1,2	9308	10496	122	21	172	119	32
BRASOV	51202	3,1	10667	40120	114	44	87	170	6
BRAILA	22561	1,4	5649	16579	96	28	43	166	28
BUZAU	30142	1,8	8858	20941	142	28	42	131	21
CARAS-SEVERIN	20244	1,2	6965	12940	102	35	65	137	31
CALARASI	16458	1,0	4829	11353	86	18	77	95	38
CLUJ	75726	4,6	19198	56024	150	52	40	262	2
CONSTANTA	68890	4,2	13299	54747	203	51	49	541	3
COVASNA	14054	0,9	4822	8999	68	24	32	109	41
DAMBOVITA	30696	1,9	13970	16335	134	29	75	153	20
DOLJ	43394	2,6	8819	34113	162	40	57	203	9
GALATI	38756	2,4	7737	30660	135	30	51	143	16
GIURGIU	13314	0,8	3184	9809	80	22	109	110	42
GORJ	19600	1,2	4664	14519	184	50	83	100	34
HARGHITA	25157	1,5	10094	14682	86	23	43	229	26
HUNEDOARA	33694	2,1	8882	24318	81	39	92	282	18
IALOMITA	15328	0,9	5842	9260	74	15	46	91	40
IASI	50838	3,1	13987	36239	164	34	70	344	7
MARAMURES	42183	2,6	17005	24855	124	37	39	123	11
MEHEDINTI	18495	1,1	5896	12373	82	19	27	98	36
MURES	41394	2,5	15290	25716	156	30	34	168	13
NEAMT	36260	2,2	13450	22425	161	29	30	165	17
OLT	23145	1,4	9095	13676	161	26	64	123	27
PRAHOVA	54313	3,3	16756	36987	177	50	72	271	5
SALAJ	15928	1,0	6205	9506	107	19	28	63	39
SATU MARE	27728	1,7	9119	18326	88	19	42	134	22
SIBIU	31807	1,9	7766	23622	119	34	108	158	19
SUCEAVA	42043	2,6	20128	21399	202	30	64	220	12
TELEORMAN	18504	1,1	6406	11699	152	21	44	182	35
TIMIS	57637	3,5	9336	47707	140	38	68	348	4
TULCEA	16915	1,0	5844	10733	66	18	42	212	37
VASLUI	20957	1,3	10116	10540	109	16	41	135	29
VALCEA	27127	1,7	10701	16068	168	40	37	113	23
VRANCEA	20329	1,2	6213	13855	104	16	27	114	30
MUN. BUCURESTI	311715	19,0	19854	290389	138	115	103	1116	1
ILFOV	26595	1,6	3407	22897	92	21	13	165	24

*) The total number of incorporations (col 1)

*** Less than 0,01%

Table no. 5

**The number of incorporations in the Trade Register,
by counties and categories, during the period of
December 1990 - July 2007**

County	Total		out of which:						RA	OC
			PF+AF	companies: 1212356						
	SNC	SCS		SRL	SA	No.	No.			
	No.	%	No.	No.	No.			No.	No.	No.
0	1	2	3	4	5	6	7	8	9	
Total ROMÂNIA	1642733	100,0	423634	32655	1567	1145896	32232	1346	5397	
ALBA	25753	1,6	8896	890	11	15224	553	38	141	
ARAD	40409	2,5	15378	53	11	24108	674	27	157	
ARGES	42347	2,6	13689	107	14	27522	818	29	168	
BACAU	41174	2,5	13633	1299	4	25320	724	35	158	
BIHOR	49675	3,0	11577	126	47	36849	893	37	146	
BISTRITA-NASAUD	20007	1,2	7100	146	21	12210	413	19	98	
BOTOSANI	20238	1,2	9308	468	1	9867	451	21	122	
BRASOV	51202	3,1	10667	239	20	39272	846	44	114	
BRAILA	22561	1,4	5649	376	12	15884	516	28	96	
BUZAU	30142	1,8	8858	3747	46	16754	567	28	142	
CARAS-SEVERIN	20244	1,2	6965	117	8	12555	462	35	102	
CALARASI	16458	1,0	4829	609	3	10563	350	18	86	
CLUJ	75726	4,6	19198	2112	18	52931	1265	52	150	
CONSTANTA	68890	4,2	13299	311	23	53534	1469	51	203	
COVASNA	14054	0,9	4822	148	4	8692	296	24	68	
DAMBOVITA	30696	1,9	13970	60	8	16009	486	29	134	
DOLJ	43394	2,6	8819	1560	8	31928	877	40	162	
GALATI	38756	2,4	7737	1574	6	28437	837	30	135	
GIURGIU	13314	0,8	3184	35	8	9662	323	22	80	
GORJ	19600	1,2	4664	29	1	14185	487	50	184	
HARGHITA	25157	1,5	10094	62	6	14401	485	23	86	
HUNEDOARA	33694	2,1	8882	1166	98	22763	665	39	81	
IALOMITA	15328	0,9	5842	266	11	8776	344	15	74	
IASI	50838	3,1	13987	506	111	35033	1001	34	164	
MARAMURES	42183	2,6	17005	1927	23	22479	587	37	124	
MEHEDINTI	18495	1,1	5896	427	3	11740	328	19	82	
MURES	41394	2,5	15290	37	34	25187	660	30	156	
NEAMT	36260	2,2	13450	3293	30	18632	665	29	161	
OLT	23145	1,4	9095	1611	1	11765	486	26	161	
PRAHOVA	54313	3,3	16756	3122	14	33304	890	50	177	
SALAJ	15928	1,0	6205	600	4	8702	291	19	107	
SATU MARE	27728	1,7	9119	283	6	17746	467	19	88	
SIBIU	31807	1,9	7766	776	48	22411	653	34	119	
SUCEAVA	42043	2,6	20128	438	8	20654	583	30	202	
TELEORMAN	18504	1,1	6406	272	399	10842	412	21	152	
TIMIS	57637	3,5	9336	609	27	46244	1243	38	140	
TULCEA	16915	1,0	5844	1363	114	9037	473	18	66	
VASLUI	20957	1,3	10116	90	12	10211	403	16	109	
VALCEA	27127	1,7	10701	364	6	15365	483	40	168	
VRANCEA	20329	1,2	6213	356	10	13183	447	16	104	
MUN. BUCURESTI	311716	19,0	19854	1032	297	283517	6762	115	138	
ILFOV	26595	1,6	3407	49	31	22398	597	21	92	

Table no. 6

**The number of incorporations in the Trade Register, by field of activity*
during the period of December 1990 - July 2007**

CAEN segment	Field of activity	Total		out of which:						
				PF+AF	companies: 1212356				RA	OC
		No.	%		No.	SNC	SCS	SRL		
				No.		No.	No.	No.	No.	No.
0	1	2	3	4	5	6	7	8	9	10
	Total ROMANIA	1642733	100,0	423634	32655	1567	1145896	32232	1346	5397
1	Agriculture, hunting and related service activities	65784	4,0	17022	2024	44	42734	3790	53	117
2	Forestry, logging and related service activities	8736	0,5	1150	152	3	7107	222	94	8
5	Fishing, fish farming and related service activities	3279	0,2	1882	17	3	1323	54		
10	Mining of coal and lignite; extraction of peat	120	0,0	2			82	32	4	
11	Extraction of crude petroleum and natural gas; service activities incidental to oil and gas extraction, excluding surveying	358	0,0	19	1		168	124	46	
12	Mining of uranium and thorium ores	133	0,0	32			95	6		
13	Mining of metal ores	537	0,0	163			311	55	8	
14	Other mining and quarrying	1733	0,1	110	9	1	1440	170	2	1
15	Manufacture of food products and beverages	74150	4,5	14801	3260	149	53827	1860	5	248
16	Manufacture of tobacco products	292	0,0	47			213	31	1	
17	Manufacture of textiles	11911	0,7	2433	556	16	8355	406		145
18	Manufacture of wearing apparel; dressing and dyeing of fur	21360	1,3	4884	875	38	14899	358	1	305
19	Tanning and dressing of leather; manufacture of luggage, handbags, saddlery, harness and footwear	5421	0,3	925	112	6	4203	123	1	51
20	Manufacture of wood and of products of wood and cork, except furniture; manufacture of articles of straw and plaiting materials	25790	1,6	9214	575	29	15422	499	9	42
21	Manufacture of pulp, paper and paper products	1842	0,1	128	21	1	1581	98		13
22	Publishing, printing and reproduction of recorded media	12206	0,7	984	317	21	10454	406	14	10
23	Manufacture of coke, refined petroleum products and nuclear fuel	263	0,0	24			203	34	2	
24	Manufacture of chemicals and chemical products	3785	0,2	120	89	1	3185	378	6	6
25	Manufacture of rubber and plastic products	6476	0,4	583	314	7	5287	260		24
26	Manufacture of other non-metallic mineral products	9688	0,6	2988	212	6	6075	388	5	14
27	Manufacture of basic metals	2468	0,2	174	39	3	2034	208	3	7
28	Manufacture of fabricated metal products, except machinery and equipment	18081	1,1	4545	361	23	12354	725	11	62
29	Manufacture of machinery and equipment n.e.c.	3909	0,2	113	44	7	3300	421	19	5
30	Manufacture of office machinery and computers	1792	0,1	16	25	4	1667	80		
31	Manufacture of electrical machinery and apparatus n.e.c.	1985	0,1	112	44	6	1673	144		6
32	Manufacture of radio, television and communication equipment and apparatus	884	0,1	64	14	4	728	73		1
33	Manufacture of medical, precision and optical instruments, watches and clocks	2733	0,2	653	17	2	1952	105		4
34	Manufacture of motor vehicles, trailers and semi-trailers	937	0,1	31	31	3	744	126		2
35	Manufacture of other transport equipment	2006	0,1	294	86	7	1419	125	73	2
36	Manufacture of furniture; manufacturing n.e.c.	16140	1,0	4610	284	16	10730	337	5	158
37	Recycling	5143	0,3	447	51	5	4464	175		1
40	Electricity, gas, steam and hot water supply	3075	0,2	839	3	1	1604	539	89	
41	Collection, purification and distribution of water	3584	0,2	1632	2		1660	217	73	
45	Construction	107225	6,5	28026	611	44	75956	2457	54	77

Table no. 6
(continuing)

**The number of incorporations in the Trade Register, by field of activity*
and categories, during the period of December 1990 - July 2007**

CAEN segment	Field of activity	Total		out of which:						RA	OC
				PF+AF	companies: 1212356						
					SNC	SCS	SRL	SA			
					No.	No.	No.	No.			
0	1	2	3	4	5	6	7	8	9	10	
	Total ROMÂNIA	1642733	100,0	423634	32655	1567	1145896	32232	1346	5397	
50	Sale, maintenance and repair of motor vehicles and motorcycles; retail sale of automotive fuel	56319	3,4	8979	1244		44987	1027	6	42	
51	Wholesale trade and commission trade, except of motor vehicles and motorcycles	210250	12,8	19257	4524	151	182686	3315	35	282	
52	Retail trade, except of motor vehicles and motorcycles; repair of personal and household goods	513735	31,3	182890	11915	558	313482	2498	6	2385	
55	Hotels and restaurants	63278	3,9	14935	1635	126	45624	790	73	95	
60	Land transport; transport via pipelines	85949	5,2	37017	845	37	46947	1060	33	10	
61	Water transport	891	0,1	173	82	8	493	64	70	1	
62	Air transport	306	0,0	18			230	48	10		
63	Supporting and auxiliary transport activities; activities of travel agencies	10974	0,7	759	220	14	9432	442	96	11	
64	Post and telecommunications	7942	0,5	910	11	1	6699	307	11	3	
65	Financial intermediation, except insurance and pension funding	6731	0,4	148	15		3048	2485	2	1033	
66	Insurance and pension funding, except compulsory social security	2075	0,1	616	1		515	942		1	
67	Activities auxiliary to financial intermediation	7490	0,5	1302	7	2	5878	293		8	
70	Real estate activities	27478	1,7	801	29	9	25943	672	17	7	
71	Renting of machinery and equipment without operator and of personal and household goods	3838	0,2	724	116	8	2821	98	70	1	
72	Computer and related activities	25826	1,6	5722	120	13	19581	385	2	3	
73	Research and development	1808	0,1	253	11	2	1324	173	43	2	
74	Other business activities	120462	7,3	25412	794	74	92325	1690	106	60	
75	Public administration and defence; compulsory social security	368	0,0	92	5		222	26	22	1	
80	Education	7685	0,5	3936	62	6	3615	66			
85	Health and social work	16894	1,0	2156	233	15	14401	85	3	1	
90	Sewage and refuse disposal, sanitation and similar activities	1015	0,1	109	13	2	761	110	18		
91	Activities of membership organizations n.e.c.	215	0,0	95	1		101	15		3	
92	Recreational, cultural and sporting activities	18099	1,1	5062	202	14	12437	303	69	12	
93	Other service activities	28230	1,7	12503	418	42	14757	307	76	126	
95	Activities of households as employers of domestic staff	965	0,1	637	6	1	317	3		1	
96	Extra-territorial organizations and bodies	11	0,0	11							

Table no. 7

**Operations carried on with the Trade Registers,
by counties and categories,
in July 2007**

County	Total of operations carried on		out of which:							
			New incorporations		Changes in statutory documents		out of which: of liquidation, dissolution		Strike off companies	
	No.	%	No.	%	No.	%	No.	%	No.	%
0	1	2	3	4	5	6	7	8	9	10
Total ROMÂNIA	109579	100,0	11670	10,6	94736	86,5	3541	3,2	3173	2,9
ALBA	779	100,0	192	24,6	540	69,3	31	4,0	47	6,0
ARAD	1648	100,0	280	17,0	1346	81,7	40	2,4	22	1,3
ARGES	3661	100,0	297	8,1	3325	90,8	63	1,7	39	1,1
BACAU	2243	100,0	233	10,4	1982	88,4	7	0,3	28	1,2
BIHOR	1474	100,0	405	27,5	1012	68,7	23	1,6	57	3,9
BISTRITA-NASAUD	2307	100,0	138	6,0	2143	92,9	37	1,6	26	1,1
BOTOSANI	1776	100,0	122	6,9	1377	77,5	6	0,3	277	15,6
BRASOV	3012	100,0	408	13,5	2446	81,2	55	1,8	158	5,2
BRAILA	867	100,0	112	12,9	742	85,6	3	0,3	13	1,5
BUZAU	1379	100,0	209	15,2	1131	82,0	40	2,9	39	2,8
CARAS-SEVERIN	1160	100,0	112	9,7	1016	87,6	31	2,7	32	2,8
CALARASI	378	100,0	99	26,2	274	72,5	1	0,3	5	1,3
CLUJ	3882	100,0	679	17,5	3098	79,8	225	5,8	105	2,7
CONSTANTA	4082	100,0	523	12,8	3491	85,5	235	5,8	68	1,7
COVASNA	347	100,0	97	28,0	235	67,7	1	0,3	15	4,3
DAMBOVITA	1104	100,0	185	16,8	867	78,5	4	0,4	52	4,7
DOLJ	2010	100,0	281	14,0	1649	82,0	56	2,8	80	4,0
GALATI	1638	100,0	224	13,7	1376	84,0	9	0,5	38	2,3
GIURGIU	326	100,0	100	30,7	206	63,2			20	6,1
GORJ	674	100,0	95	14,1	515	76,4	10	1,5	64	9,5
HARGHITA	1275	100,0	221	17,3	1011	79,3	5	0,4	43	3,4
HUNEDOARA	1022	100,0	197	19,3	769	75,2	6	0,6	56	5,5
IALOMITA	934	100,0	105	11,2	719	77,0	7	0,7	110	11,8
IASI	3263	100,0	397	12,2	2727	83,6	187	5,7	139	4,3
MARAMURES	1782	100,0	249	14,0	1477	82,9	12	0,7	56	3,1
MEHEDINTI	411	100,0	88	21,4	288	70,1	1	0,2	35	8,5
MURES	14366	100,0	321	2,2	13964	97,2	145	1,0	81	0,6
NEAMT	2041	100,0	228	11,2	1766	86,5	778	38,1	47	2,3
OLT	4400	100,0	125	2,8	4250	96,6	9	0,2	25	0,6
PRAHOVA	2875	100,0	422	14,7	2349	81,7	74	2,6	104	3,6
SALAJ	848	100,0	115	13,6	694	81,8	13	1,5	39	4,6
SATU MARE	1237	100,0	239	19,3	849	68,6	82	6,6	149	12,0
SIBIU	1466	100,0	217	14,8	1204	82,1	14	1,0	45	3,1
SUCEAVA	9260	100,0	342	3,7	8492	91,7	22	0,2	426	4,6
TELEORMAN	396	100,0	88	22,2	266	67,2	2	0,5	42	10,6
TIMIS	2096	100,0	507	24,2	1516	72,3	800	38,2	73	3,5
TULCEA	542	100,0	96	17,7	439	81,0	9	1,7	7	1,3
VASLUI	452	100,0	106	23,5	317	70,1	2	0,4	29	6,4
VALCEA	1041	100,0	145	13,9	830	79,7	52	5,0	66	6,3
VRANCEA	1278	100,0	127	9,9	1014	79,3	3	0,2	137	10,7
MUN. BUCURESTI	18241	100,0	2246	12,3	15747	86,3	438	2,4	248	1,4
ILFOV	5606	100,0	298	5,3	5277	94,1	3	0,1	31	0,6

*) by effect of implementation of Law no. 314/2001, art.1 and art. 6

*** Less than 0,01%

Table no. 8

**The number of incorporations in the Trade Register,
by counties and sources of capital,
in July 2007**

County	Total		out of which:					Rnking by: *	
			Private capital			State majority capital			Mixed capital (state+priva)
			out of which:			out of which:			
			PF+AF	Companies	OC	RA	Companie s		Companie s
No.	%	No.	No.	No.	No.	No.	No.		
0	1	2	3	4	5	6	7	8	9
Total ROMÂNIA	11670	100,0	3533	8129		4	2	2	X
ALBA	192	1,6	62	130					24
ARAD	280	2,4	96	184					14
ARGES	297	2,5	102	195					12
BACAU	233	2,0	66	167					17
BIHOR	405	3,5	150	255					7
BISTRITA-NASAUD	138	1,2	53	85					27
BOTOSANI	122	1,0	70	52					30
BRASOV	408	3,5	116	292					6
BRAILA	112	1,0	33	79					32
BUZAU	209	1,8	81	126		2			22
CARAS-SEVERIN	112	1,0	32	80					33
CALARASI	99	0,8	13	86					37
CLUJ	679	5,8	229	450					2
CONSTANTA	523	4,5	152	371					3
COVASNA	97	0,8	56	41					38
DAMBOVITA	185	1,6	69	116					25
DOLJ	281	2,4	63	218					13
GALATI	224	1,9	64	160					19
GIURGIU	100	0,9	22	78					36
GORJ	95	0,8	27	68					40
HARGHITA	221	1,9	132	89					20
HUNEDOARA	197	1,7	46	151					23
IALOMITA	105	0,9	25	80					35
IASI	397	3,4	141	256					8
MARAMURES	249	2,1	88	161					15
MEHEDINTI	88	0,8	28	60					41
MURES	321	2,8	135	185				1	10
NEAMT	228	2,0	92	136					18
OLT	125	1,1	39	86					29
PRAHOVA	422	3,6	144	276			2		5
SALAJ	115	1,0	59	56					31
SATU MARE	239	2,0	106	133					16
SIBIU	217	1,9	86	130		1			21
SUCEAVA	342	2,9	186	156					9
TELEORMAN	88	0,8	33	55					42
TIMIS	507	4,3	129	378					4
TULCEA	96	0,8	38	58					39
VASLUI	106	0,9	41	65					34
VALCEA	145	1,2	44	101					26
VRANCEA	127	1,1	48	79					28
MUN. BUCURESTI	2246	19,2	302	1944					1
ILFOV	298	2,6	35	261		1		1	11

*) The total number of incorporations (col 1)

*** Less than 0,01%

Table no.9

**The number of incorporations in the Trade Register,
by counties and category
in July 2007**

County	Total		out of which:						RA	OC
			PF+AF	companies: 8133						
	No.	%		No.	SNC	SCS	SRL	SA	No.	No.
			No.		No.	No.	No.			
0	1	2	3	4	5	6	7	8	9	
Total ROMÂNIA	11670	100,0	3533			8036	97	4		
ALBA	192	1,6	62			129	1			
ARAD	280	2,4	96			183	1			
ARGES	297	2,5	102			195				
BACAU	233	2,0	66			167				
BIHOR	405	3,5	150			253	2			
BISTRITA-NASAUD	138	1,2	53			84	1			
BOTOSANI	122	1,0	70			51	1			
BRASOV	408	3,5	116			291	1			
BRAILA	112	1,0	33			79				
BUZAU	209	1,8	81			126		2		
CARAS-SEVERIN	112	1,0	32			80				
CALARASI	99	0,8	13			85	1			
CLUJ	679	5,8	229			442	8			
CONSTANTA	523	4,5	152			366	5			
COVASNA	97	0,8	56			41				
DAMBOVITA	185	1,6	69			116				
DOLJ	281	2,4	63			207	11			
GALATI	224	1,9	64			158	2			
GIURGIU	100	0,9	22			77	1			
GORJ	95	0,8	27			68				
HARGHITA	221	1,9	132			88	1			
HUNEDOARA	197	1,7	46			151				
IALOMITA	105	0,9	25			80				
IASI	397	3,4	141			253	3			
MARAMURES	249	2,1	88			159	2			
MEHEDINTI	88	0,8	28			58	2			
MURES	321	2,8	135			183	3			
NEAMT	228	2,0	92			135	1			
OLT	125	1,1	39			86				
PRAHOVA	422	3,6	144			274	4			
SALAJ	115	1,0	59			55	1			
SATU MARE	239	2,0	106			133				
SIBIU	217	1,9	86			126	4	1		
SUCEAVA	342	2,9	186			155	1			
TELEORMAN	88	0,8	33			55				
TIMIS	507	4,3	129			372	6			
TULCEA	96	0,8	38			58				
VASLUI	106	0,9	41			64	1			
VALCEA	145	1,2	44			101				
VRANCEA	127	1,1	48			77	2			
MUN. BUCURESTI	2246	19,2	302			1916	28			
ILFOV	298	2,6	35			259	3	1		

Table no. 10

**The number of incorporations in the Trade Register, by field of activity*
and categories in July 2007**

CAEN segment	Field of activity	Total		out of which:						
				PF+AF	companies: 8133				RA	OC
		SNC	SCS		SRL	SA				
		No.	%	No.	No.	No.	No.	No.	No.	No.
0	1	2	3	4	5	6	7	8	9	10
	Total ROMÂNIA	11670	100,0	3533			8036	97	4	
1	Agriculture, hunting and related service activities	299	2,6	182			117			
2	Forestry, logging and related service activities	42	0,4	8			33		1	
5	Fishing, fish farming and related service activities	30	0,3	13			17			
10	Mining of coal and lignite; extraction of peat									
11	Extraction of crude petroleum and natural gas; service activities incidental to oil and gas extraction, excluding surveying	5	0,0	3			2			
12	Mining of uranium and thorium ores									
13	Mining of metal ores									
14	Other mining and quarrying	24	0,2	1			23			
15	Manufacture of food products and beverages	99	0,8	42			56	1		
16	Manufacture of tobacco products	1	0,0				1			
17	Manufacture of textiles	31	0,3	10			21			
18	Manufacture of wearing apparel; dressing and dyeing of fur	66	0,6	20			46			
19	Tanning and dressing of leather; manufacture of luggage, handbags, saddlery, harness and footwear	14	0,1	2			12			
20	Manufacture of wood and of products of wood and cork, except furniture; manufacture of articles of straw and plaiting materials	116	1,0	42			74			
21	Manufacture of pulp, paper and paper products	5	0,0	1			4			
22	Publishing, printing and reproduction of recorded media	60	0,5	6			53	1		
23	Manufacture of coke, refined petroleum products and nuclear fuel									
24	Manufacture of chemicals and chemical products	11	0,1				11			
25	Manufacture of rubber and plastic products	34	0,3	2			32			
26	Manufacture of other non-metallic mineral products	81	0,7	30			49	2		
27	Manufacture of basic metals	2	0,0	1			1			
28	Manufacture of fabricated metal products, except machinery and equipment	109	0,9	43			66			
29	Manufacture of machinery and equipment n.e.c.	22	0,2	2			20			
30	Manufacture of office machinery and computers	4	0,0				4			
31	Manufacture of electrical machinery and apparatus n.e.c.	4	0,0				4			
32	Manufacture of radio, television and communication equipment and apparatus	2	0,0	1			1			
33	Manufacture of medical, precision and optical instruments, watches and clocks	16	0,1	5			11			
34	Manufacture of motor vehicles, trailers and semi- trailers	1	0,0				1			
35	Manufacture of other transport equipment	20	0,2	2			18			
36	Manufacture of furniture; manufacturing n.e.c.	68	0,6	30			37	1		
37	Recycling	42	0,4	5			37			
40	Electricity, gas, steam and hot water supply	34	0,3				26	7	1	
41	Collection, purification and distribution of water	13	0,1	1			1	11		
45	Construction	1799	15,4	457			1338	3	1	

Table no. 11

**Number of companies registered and the amount
of subscribed capital, by county in July 2007**

County	Total registered companies		Subscribed capital		Average subscribed capital on company
	No.	%	thousand RONI	%	thousand RONI
0	1	2	3	4	5
Total ROMÂNIA	8133	100,0	393961206,5	100,0	48933,2
ALBA	130	1,6	51,3	***	0,4
ARAD	184	2,3	893,5	***	4,9
ARGES	195	2,4	284,1	***	1,5
BACAU	167	2,1	809,1	***	4,8
BIHOR	255	3,1	570,1	***	2,2
BISTRITA-NASAUD	85	1,0	122,8	***	1,5
BOTOSANI	52	0,6	2017,5	***	39,6
BRASOV	292	3,6	946,3	***	3,3
BRAILA	79	1,0	68,2	***	0,9
BUZAU	126	1,5	280,4	***	2,3
CARAS-SEVERIN	80	1,0	45,3	***	0,6
CALARASI	86	1,1	545,4	***	6,4
CLUJ	450	5,5	44691,2	0,0	100,4
CONSTANTA	371	4,6	2324,1	***	6,4
COVASNA	41	0,5	68,0	***	1,7
DAMBOVITA	116	1,4	1670,4	***	14,5
DOLJ	218	2,7	2067,5	***	9,9
GALATI	160	2,0	1213,4	***	7,6
GIURGIU	78	1,0	161,6	***	2,1
GORJ	68	0,8	13,7	***	0,2
HARGHITA	89	1,1	85858,3	0,0	975,7
HUNEDOARA	151	1,9	421,1	***	2,8
IALOMITA	80	1,0	205,8	***	2,6
IASI	256	3,1	392404933,3	99,6	1557162,4
MARAMURES	161	2,0	177,4	***	1,1
MEHEDINTI	60	0,7	67,3	***	1,2
MURES	186	2,3	159167,7	0,0	865,0
NEAMT	136	1,7	2057,4	***	15,2
OLT	86	1,1	45,2	***	0,5
PRAHOVA	278	3,4	27491,8	***	99,2
SALAJ	56	0,7	13,9	***	0,3
SATU MARE	133	1,6	2641,8	***	20,2
SIBIU	130	1,6	666,6	***	5,3
SUCEAVA	156	1,9	56,9	***	0,4
TELEORMAN	55	0,7	13,3	***	0,2
TIMIS	378	4,6	1757,6	***	4,7
TULCEA	58	0,7	19,7	***	0,3
VASLUI	65	0,8	20,5	***	0,3
VALCEA	101	1,2	1002,7	***	9,9
VRANCEA	79	1,0	454,9	***	5,8
MUN. BUCURESTI	1944	23,9	1176659,4	0,3	611,6
ILFOV	262	3,2	38629,6	***	149,1

Note: The average does not include filials because according to the

*** Less than 0,01%

Table no. 12

**Number of registered companies and the amount
of subscribed capital by category,
in July 2007**

Company type	Total registered companies		Subscribed capital		Average subscribed capital on company
	No.	%	thousand RONI	%	thousand RONI
0	1	2	3	4	5
Total ROMÂNIA	8133	100,0	393961206,5	100,0	48933,2
SNC					
SCS					
SA	97	1,2	1283138,1	0,3	15648,0
SRL	8036	98,8	392678068,4	99,7	48883,1
SCA					

Note: The average does not include filials because according to the Law no.31/1990 they are not juridical persons

*** Less than 0,01%

Diagram no.5

