



MINISTRY OF JUSTICE

THE NATIONAL TRADE REGISTER OFFICE

București, Bd. Unirii nr. 74, Bl. J3b, tronson II+III, sector 3; Telefon: +40 21 316.08.04, 316.08.10; Fax: +40 21 316.08.03; Cod poștal: 030837
Website: www.onrc.ro; E-mail: onrc@onrc.ro; Cod de identificare Fiscală: 14942091

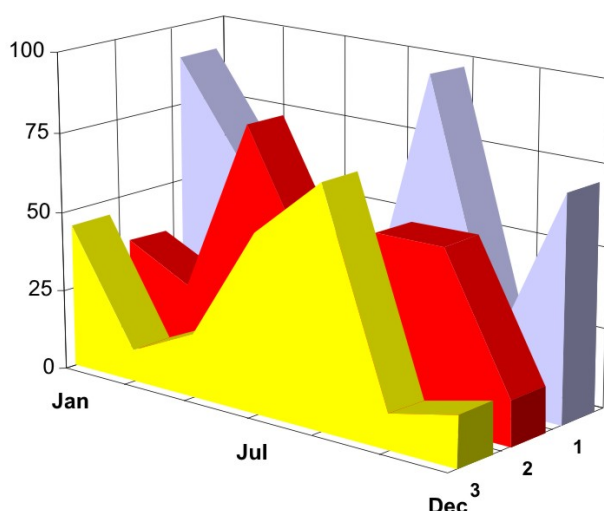
PROCEEDINGS IN THE CENTRAL TRADE REGISTER

STATISTICAL SYNTHESIS

OF

RECORDS IN THE CENTRAL TRADE REGISTER

- the 30th of June 2007 - provisional data -



- ISSUE No. 187 -

**MINISTRY OF JUSTICE
THE NATIONAL TRADE REGISTER OFFICE**

- Operations of incorporation of companies, changes in statutory documents and strike-off of companies are based on Law No.26/1990 reissued, Law No.31/1990, reissued, OUG No.76/2001, reissued and Methodology Norms No. P/608/1998.

- This paper presents the trend in operations registered in The Trade Register Office attached to the law court of Bucharest and in the Trade Register Offices attached to the law court in each county of Romania.

- Information recorded in the Central Trade Register concern operations compulsory by law to be registered in the trade registers within the 42 trade register offices attached to the law courts.

• No part of the content of this publication, in original or in any modified format, September be reproduced, stored in a retrieval system, or transmitted, in any form or by any means, without the prior permission in writing of The Ministry of Justice – The National Trade Register Office.

• The content of this publication September be referred to in articles, studies, books, as supporting or explanatory data under the condition only, the source of the information to be clearly and precisely specified.

| | | |
|------------|---|-----------|
| 1 | Explanatory Note | 1 |
| 2.1 | Data for December 1990 –June 2007 | 3 |
| | Table no.1 – Operations registered in the Trade Register, by categories during the period of December 1990 –June 2007, in total by country and counties, rate of categories of operations in total operations country | 3 |
| | Table no.1.a – Operations registered in the Trade Register, by categories during the period of December 1990 –June 2007, in total by country and counties, counties’ rate in total country | 4 |
| | Table no. 3 – Number and structure of incorporations in the Trade Register, by years, during the period of December 1990-June 2007 | 5 |
| | Table no.4 – The number of incorporations in the Trade Register, by counties and sources of capital, in the period December 1990 -June 2007 | 6 |
| | Table no. 5 – The number of incorporations in the Trade Register, by counties and categories, during the period of December 1990 –June 2007 | 7 |
| | Table no. 6 – The number of incorporations in the Trade Register, by field of activity and categories, during the period of December 1990 -June 2007 | 8 |
| 2.2 | Data for June 2007 | 10 |
| | Table no. 7 – Operations carried on with the Trade Registers, by counties and categories, in June 2007 | 10 |
| | Table no. 8 – The number of incorporations in the Trade Register, by counties and sources of capital, in June 2007 | 11 |
| | Table no. 9 – The number of incorporations in the Trade Register, by counties and category in June 2007 | 12 |
| | Table no. 10 –The number of incorporations in the Trade Register, by field of activity and categories in June 2007 | 13 |
| | Table no. 11 – Number of companies registered and the amount of subscribed capital, by county in June 2007 | 15 |
| | Table no. 12– Number of registered companies and the amount of subscribed capital by category, in June 2007 | 16 |
| | Diagram no. 5 – Average subscribed capital on company in June 2007 | 16 |

The Trade Register Office is set-up by Law No. 26/1990, reissued and modified by OUG No. 129/2002, became an active institution since December 1990 and is structured in two levels:

- the national level, represented by the National Trade Register Office organised under the Ministry of Justice
- the local level, represented by the 42 trade register offices attached to the law courts and co-ordinated by the National Trade Register Office

The categories of businessmen compulsory to register in the trade register are:

- natural persons tradesmen and family associations doing usually commercial acts, commercial companies, national companies, companies under state supervision, and co-operative organisations
- subsidiaries registered as commercial companies and legal persons following the legal proceedings of set-up, activity and incorporation according to the type of the legally set-up company.

Usual Terms:

- incorporation – represents the registration of the company in the trade registry awarding the quality of legal person.

- other statutory documents – represent the official registration of the changes occurred in a company's life, such as: changes in headquarters' address, increase or decrease of the issued capital, merger, liquidation, strike-off, etc.

- strike-off – represents the removal of a company from the trade registry, due to dissolution and liquidation, being also the very moment the company loses its quality of legal person. Data also include the companies under the provisions of Law No. 314/2001.

- change of certificate – represents the obligation of companies set-up before OGU No. 76/2001 republished came in force, to request the incorporation certificate and fiscal registration certificate to be replaced with the new registration certificate containing the given unique registration code.

The ratio of these changes is being calculated as a proportion between the effective number of changes and the number of active companies due to operate the change.

- active company from the legal point of view – a company registered in the trade register and which is not affected by any of the situations leading to the temporary or permanently loss of this status (e.g. dissolution, liquidation, strike-off)

- operations represent all the records in the trade registry including incorporations, other statutory documents and strike-off of companies, irrespective of the object of activity, company's type and origin of the subscribed capital (local or foreign investment).

• **Terms used in tables and charts**

➤ **Number of companies:** represents, depending on the specific table, the number of companies incorporated in the related period, the number of companies being struck-off from the trade registry.

➤ **Amount of the subscribed capital:**

- **total, in local currency:** the amount of the subscribed capital resulted from totalising the amount subscribed (in cash and in kind) in local currency (ROL)

➤ **Regional development:**

| | |
|----------------------------|--|
| <i>North-East:</i> | Suceava, Botoșani, Neamț, Iași, Bacău, Vaslui. |
| <i>South-East:</i> | Vrancea, Galați, Buzău, Brăila, Tulcea, Constanța. |
| <i>South-Muntenia:</i> | Argeș, Dâmbovița, Prahova, Teleorman, Giurgiu, Călărași, Ialomița. |
| <i>South-West Oltenia:</i> | Gorj, Vâlcea, Dolj, Mehedinți, Olt. |
| <i>West:</i> | Arad, Caraș-Severin, Hunedoara, Timiș. |
| <i>North-West:</i> | Bihor, Bistrița, Cluj, Satu Mare, Sălaj, Maramureș. |
| <i>Center:</i> | Alba, Brașov, Covasna, Harghita, Mureș, Sibiu. |
| <i>Bucharest-Ilfov:</i> | București, Ilfov. |

CAEN code – The Classification of Activities in the National Economy was approved by HG No. 656/1997, modified by Order No 601 of the President of National Institute of Statistics being compatible with the international classification used in statistic reports and official documents. Activities are ranked upon homogeneity principle by sections, divisions, groups and classes.

Common abbreviations

- **PF** - Natural Persons Tradesman
- **AF** - Family association
- **SNC** - General Partnership
- **SCS** - Limited Partnership
- **SA** - Joint stock company
- **SRL** - Limited liability company
- **RA** - Company Under State Supervision
- **OC** - Co-operative organisation

Source:

The integrated IT system of the trade registry is designed by The National Trade Registry Office according to the provisions of the related legislation in force. The source of information is the computerised system of the trade registers handled by the Trade Register Offices attached to the law courts.

Table no. 1

**Operations registered in the Trade Register, by categories
during the period of December 1990 - June 2007 in total by country and counties,
- rate of categories of operations in total operations/country -**

| Counties | Total of registered operations | | out of which : | | | | | | | |
|----------------------|--------------------------------|--------------|----------------------|--------------|--------------------------------|--------------|---|--------------|----------------------|--------------|
| | | | Registered companies | | Changes in statutory documents | | out of which : of liquidation, dissolution | | Strike off companies | |
| | No. | % | No. | % | No. | % | No. | % | No. | % |
| 0 | 1 | 2 | 3 | 4 | 5 | 6 | 7 | 8 | 11 | 12 |
| Total ROMÂNIA | 8491344 | 100,0 | 1631063 | 100,0 | 6365859 | 100,0 | 9911 | 100,0 | 494422 | 100,0 |
| ALBA | 112632 | 1,3 | 25561 | 1,6 | 82437 | 1,3 | 371 | 3,7 | 4634 | 0,9 |
| ARAD | 186865 | 2,2 | 40129 | 2,5 | 136743 | 2,1 | 369 | 3,7 | 9993 | 2,0 |
| ARGES | 207068 | 2,4 | 42050 | 2,6 | 156216 | 2,5 | 197 | 2,0 | 8802 | 1,8 |
| BACAU | 199987 | 2,4 | 40941 | 2,5 | 147397 | 2,3 | 1003 | 10,1 | 11649 | 2,4 |
| BIHOR | 251408 | 3,0 | 49270 | 3,0 | 188012 | 3,0 | 303 | 3,1 | 14126 | 2,9 |
| BISTRITA-NASAUD | 103152 | 1,2 | 19869 | 1,2 | 77250 | 1,2 | 72 | 0,7 | 6033 | 1,2 |
| BOTOSANI | 78773 | 0,9 | 20116 | 1,2 | 53379 | 0,8 | 66 | 0,7 | 5278 | 1,1 |
| BRASOV | 286274 | 3,4 | 50794 | 3,1 | 224534 | 3,5 | 149 | 1,5 | 10946 | 2,2 |
| BRAILA | 107585 | 1,3 | 22449 | 1,4 | 81736 | 1,3 | 61 | 0,6 | 3400 | 0,7 |
| BUZAU | 157995 | 1,9 | 29933 | 1,8 | 117821 | 1,9 | 146 | 1,5 | 10241 | 2,1 |
| CARAS-SEVERIN | 108438 | 1,3 | 20132 | 1,2 | 80258 | 1,3 | 41 | 0,4 | 8048 | 1,6 |
| CALARASI | 73619 | 0,9 | 16359 | 1,0 | 52444 | 0,8 | 79 | 0,8 | 4816 | 1,0 |
| CLUJ | 380590 | 4,5 | 75047 | 4,6 | 292636 | 4,6 | 197 | 2,0 | 12907 | 2,6 |
| CONSTANTA | 358642 | 4,2 | 68367 | 4,2 | 265341 | 4,2 | 926 | 9,3 | 24934 | 5,0 |
| COVASNA | 78031 | 0,9 | 13957 | 0,9 | 59776 | 0,9 | 18 | 0,2 | 4298 | 0,9 |
| DAMBOVITA | 129771 | 1,5 | 30511 | 1,9 | 86069 | 1,4 | 98 | 1,0 | 13191 | 2,7 |
| DOLJ | 224030 | 2,6 | 43113 | 2,6 | 168624 | 2,6 | 215 | 2,2 | 12293 | 2,5 |
| GALATI | 236211 | 2,8 | 38532 | 2,4 | 183964 | 2,9 | 125 | 1,3 | 13715 | 2,8 |
| GIURGIU | 56531 | 0,7 | 13214 | 0,8 | 38394 | 0,6 | 47 | 0,5 | 4923 | 1,0 |
| GORJ | 109979 | 1,3 | 19505 | 1,2 | 84447 | 1,3 | 48 | 0,5 | 6027 | 1,2 |
| HARGHITA | 125717 | 1,5 | 24936 | 1,5 | 96409 | 1,5 | 51 | 0,5 | 4372 | 0,9 |
| HUNEDOARA | 163133 | 1,9 | 33497 | 2,1 | 116425 | 1,8 | 126 | 1,3 | 13211 | 2,7 |
| IALOMITA | 81185 | 1,0 | 15223 | 0,9 | 60410 | 0,9 | 78 | 0,8 | 5552 | 1,1 |
| IASI | 288385 | 3,4 | 50441 | 3,1 | 226702 | 3,6 | 597 | 6,0 | 11242 | 2,3 |
| MARAMURES | 178068 | 2,1 | 41934 | 2,6 | 125724 | 2,0 | 159 | 1,6 | 10410 | 2,1 |
| MEHEDINTI | 85611 | 1,0 | 18407 | 1,1 | 59384 | 0,9 | 55 | 0,6 | 7820 | 1,6 |
| MURES | 218896 | 2,6 | 41073 | 2,5 | 165002 | 2,6 | 83 | 0,8 | 12821 | 2,6 |
| NEAMT | 182892 | 2,2 | 36032 | 2,2 | 132956 | 2,1 | 304 | 3,1 | 13904 | 2,8 |
| OLT | 105910 | 1,2 | 23020 | 1,4 | 74059 | 1,2 | 21 | 0,2 | 8831 | 1,8 |
| PRAHOVA | 298399 | 3,5 | 53891 | 3,3 | 229892 | 3,6 | 274 | 2,8 | 14616 | 3,0 |
| SALAJ | 73434 | 0,9 | 15813 | 1,0 | 53049 | 0,8 | 29 | 0,3 | 4572 | 0,9 |
| SATU MARE | 132438 | 1,6 | 27489 | 1,7 | 95357 | 1,5 | 26 | 0,3 | 9592 | 1,9 |
| SIBIU | 187498 | 2,2 | 31590 | 1,9 | 148623 | 2,3 | 31 | 0,3 | 7285 | 1,5 |
| SUCEAVA | 202285 | 2,4 | 41701 | 2,6 | 144908 | 2,3 | 29 | 0,3 | 15676 | 3,2 |
| TELEORMAN | 93310 | 1,1 | 18416 | 1,1 | 70570 | 1,1 | 49 | 0,5 | 4324 | 0,9 |
| TIMIS | 312029 | 3,7 | 57130 | 3,5 | 239118 | 3,8 | 271 | 2,7 | 15781 | 3,2 |
| TULCEA | 85729 | 1,0 | 16819 | 1,0 | 63871 | 1,0 | 149 | 1,5 | 5039 | 1,0 |
| VASLUI | 96069 | 1,1 | 20851 | 1,3 | 66917 | 1,1 | 197 | 2,0 | 8301 | 1,7 |
| VALCEA | 134470 | 1,6 | 26982 | 1,7 | 99413 | 1,6 | 138 | 1,4 | 8075 | 1,6 |
| VRANCEA | 107432 | 1,3 | 20202 | 1,2 | 83108 | 1,3 | 51 | 0,5 | 4122 | 0,8 |
| MUN. BUCURESTI | 1777768 | 20,9 | 309470 | 19,0 | 1355933 | 21,3 | 2641 | 26,6 | 112365 | 22,7 |
| ILFOV | 113105 | 1,3 | 26297 | 1,6 | 80551 | 1,3 | 21 | 0,2 | 6257 | 1,3 |

*) according to the effect of Law No. 314/2001, art.1 și art. 6

*** Less than 0,01%

Table no. 2

**Operations registered in the Trade Register, by categories
during the period of December 1990 - June 2007, in total by country and counties,
- rate of categories of operations in total operations/country -**

| Counties | Total of registered operations | | out of which : | | | | | | | |
|----------------------|--------------------------------------|--------------|-------------------------|-------------|--------------------------------------|-------------|--|------------|-------------------------|------------|
| | | | Registered companies | | Changes in statutory documents | | out of which : of liquidation, dissolution | | Strike off companies | |
| | No. | % | No. | % | No. | % | No. | % | No. | % |
| 0 | 1 | 2 | 3 | 4 | 5 | 6 | 7 | 8 | 11 | 12 |
| Total ROMÂNIA | 8491344 | 100,0 | 1631063 | 19,2 | 6365859 | 75,0 | 9911 | 0,1 | 494422 | 5,8 |
| ALBA | 112632 | 100,0 | 25561 | 22,7 | 82437 | 73,2 | 371 | 0,3 | 4634 | 4,1 |
| ARAD | 186865 | 100,0 | 40129 | 21,5 | 136743 | 73,2 | 369 | 0,2 | 9993 | 5,3 |
| ARGES | 207068 | 100,0 | 42050 | 20,3 | 156216 | 75,4 | 197 | 0,1 | 8802 | 4,3 |
| BACAU | 199987 | 100,0 | 40941 | 20,5 | 147397 | 73,7 | 1003 | 0,5 | 11649 | 5,8 |
| BIHOR | 251408 | 100,0 | 49270 | 19,6 | 188012 | 74,8 | 303 | 0,1 | 14126 | 5,6 |
| BISTRITA-NASAUD | 103152 | 100,0 | 19869 | 19,3 | 77250 | 74,9 | 72 | 0,1 | 6033 | 5,8 |
| BOTOSANI | 78773 | 100,0 | 20116 | 25,5 | 53379 | 67,8 | 66 | 0,1 | 5278 | 6,7 |
| BRASOV | 286274 | 100,0 | 50794 | 17,7 | 224534 | 78,4 | 149 | 0,1 | 10946 | 3,8 |
| BRAILA | 107585 | 100,0 | 22449 | 20,9 | 81736 | 76,0 | 61 | 0,1 | 3400 | 3,2 |
| BUZAU | 157995 | 100,0 | 29933 | 18,9 | 117821 | 74,6 | 146 | 0,1 | 10241 | 6,5 |
| CARAS-SEVERIN | 108438 | 100,0 | 20132 | 18,6 | 80258 | 74,0 | 41 | 0,0 | 8048 | 7,4 |
| CALARASI | 73619 | 100,0 | 16359 | 22,2 | 52444 | 71,2 | 79 | 0,1 | 4816 | 6,5 |
| CLUJ | 380590 | 100,0 | 75047 | 19,7 | 292636 | 76,9 | 197 | 0,1 | 12907 | 3,4 |
| CONSTANTA | 358642 | 100,0 | 68367 | 19,1 | 265341 | 74,0 | 926 | 0,3 | 24934 | 7,0 |
| COVASNA | 78031 | 100,0 | 13957 | 17,9 | 59776 | 76,6 | 18 | 0,0 | 4298 | 5,5 |
| DAMBOVITA | 129771 | 100,0 | 30511 | 23,5 | 86069 | 66,3 | 98 | 0,1 | 13191 | 10,2 |
| DOLJ | 224030 | 100,0 | 43113 | 19,2 | 168624 | 75,3 | 215 | 0,1 | 12293 | 5,5 |
| GALATI | 236211 | 100,0 | 38532 | 16,3 | 183964 | 77,9 | 125 | 0,1 | 13715 | 5,8 |
| GIURGIU | 56531 | 100,0 | 13214 | 23,4 | 38394 | 67,9 | 47 | 0,1 | 4923 | 8,7 |
| GORJ | 109979 | 100,0 | 19505 | 17,7 | 84447 | 76,8 | 48 | 0,0 | 6027 | 5,5 |
| HARGHITA | 125717 | 100,0 | 24936 | 19,8 | 96409 | 76,7 | 51 | 0,0 | 4372 | 3,5 |
| HUNEDOARA | 163133 | 100,0 | 33497 | 20,5 | 116425 | 71,4 | 126 | 0,1 | 13211 | 8,1 |
| IALOMITA | 81185 | 100,0 | 15223 | 18,8 | 60410 | 74,4 | 78 | 0,1 | 5552 | 6,8 |
| IASI | 288385 | 100,0 | 50441 | 17,5 | 226702 | 78,6 | 597 | 0,2 | 11242 | 3,9 |
| MARAMURES | 178068 | 100,0 | 41934 | 23,5 | 125724 | 70,6 | 159 | 0,1 | 10410 | 5,8 |
| MEHEDINTI | 85611 | 100,0 | 18407 | 21,5 | 59384 | 69,4 | 55 | 0,1 | 7820 | 9,1 |
| MURES | 218896 | 100,0 | 41073 | 18,8 | 165002 | 75,4 | 83 | 0,0 | 12821 | 5,9 |
| NEAMT | 182892 | 100,0 | 36032 | 19,7 | 132956 | 72,7 | 304 | 0,2 | 13904 | 7,6 |
| OLT | 105910 | 100,0 | 23020 | 21,7 | 74059 | 69,9 | 21 | 0,0 | 8831 | 8,3 |
| PRAHOVA | 298399 | 100,0 | 53891 | 18,1 | 229892 | 77,0 | 274 | 0,1 | 14616 | 4,9 |
| SALAJ | 73434 | 100,0 | 15813 | 21,5 | 53049 | 72,2 | 29 | 0,0 | 4572 | 6,2 |
| SATU MARE | 132438 | 100,0 | 27489 | 20,8 | 95357 | 72,0 | 26 | 0,0 | 9592 | 7,2 |
| SIBIU | 187498 | 100,0 | 31590 | 16,8 | 148623 | 79,3 | 31 | 0,0 | 7285 | 3,9 |
| SUCEAVA | 202285 | 100,0 | 41701 | 20,6 | 144908 | 71,6 | 29 | 0,0 | 15676 | 7,7 |
| TELEORMAN | 93310 | 100,0 | 18416 | 19,7 | 70570 | 75,6 | 49 | 0,1 | 4324 | 4,6 |
| TIMIS | 312029 | 100,0 | 57130 | 18,3 | 239118 | 76,6 | 271 | 0,1 | 15781 | 5,1 |
| TULCEA | 85729 | 100,0 | 16819 | 19,6 | 63871 | 74,5 | 149 | 0,2 | 5039 | 5,9 |
| VASLUI | 96069 | 100,0 | 20851 | 21,7 | 66917 | 69,7 | 197 | 0,2 | 8301 | 8,6 |
| VALCEA | 134470 | 100,0 | 26982 | 20,1 | 99413 | 73,9 | 138 | 0,1 | 8075 | 6,0 |
| VRANCEA | 107432 | 100,0 | 20202 | 18,8 | 83108 | 77,4 | 51 | 0,0 | 4122 | 3,8 |
| MUN. BUCURESTI | 1777768 | 100,0 | 309470 | 17,4 | 1355933 | 76,3 | 2641 | 0,1 | 112365 | 6,3 |
| ILFOV | 113105 | 100,0 | 26297 | 23,3 | 80551 | 71,2 | 21 | 0,0 | 6257 | 5,5 |

*) according to the effect of Law No. 314/2001, art.1 și art. 6

*** Less than 0,01%

Table no.3

Number and structure of incorporations in the Trade Register, by years,
June 2007

| Period (year, month) | Registered companies | | Percentage | |
|---|----------------------|---------------|------------|--------------|
| | No. | | % | % |
| 0 | 1 | 2 | 3 | |
| Total, 31 May 2006, out of which | 1631063 | 100,00 | | |
| Year 1990 | 81 | 0,00 | | |
| Year 1991 | 95840 | 5,88 | | |
| Year 1992 | 137456 | 8,43 | | |
| Year 1993 | 117078 | 7,18 | | |
| Year 1994 | 137445 | 8,43 | | |
| Year 1995 | 65479 | 4,01 | | |
| Year 1996 | 62089 | 3,81 | | |
| Year 1997 | 55663 | 3,41 | | |
| Year 1998 | 63878 | 3,92 | | |
| Year 1999 | 57197 | 3,51 | | |
| Year 2000 | 57291 | 3,51 | | |
| Year 2001 | 61265 | 3,76 | | |
| Year 2002 | 84780 | 5,20 | | |
| Year 2003 | 123582 | 7,58 | | |
| Year 2004 | 144284 | 8,85 | | |
| Year 2005 | 157375 | 9,65 | | |
| Year 2006 | 135211 | 8,29 | | |
| Year 2007 (I - XII) out of which : | 75069 | | | 100,0 |
| January | 10979 | | | 14,6 |
| February | 13249 | | | 17,6 |
| March | 14721 | | | 19,6 |
| April | 10908 | | | 14,5 |
| May | 12749 | | | 17,0 |
| June | 12463 | | | 16,6 |

Note: Column 2 reveals the annual structure of incorporations; column 3 reveals the structure by months during the current year.

*** Less than 0,01%

Diagram no.1

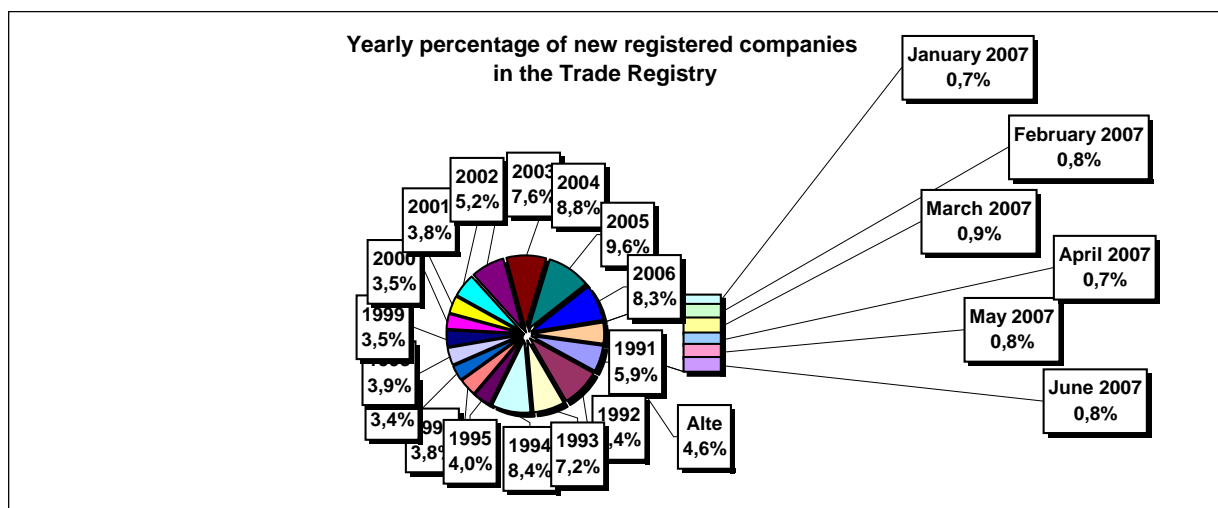


Table no. 4

The number of incorporations in the Trade Register, by counties and sources of capital, in the period December 1990 - June 2007

| Counties | Total | | out of which: | | | | | Ranking by: * | |
|----------------------|----------------|--------------|-----------------|----------------|-------------|------------------------|-------------|------------------|----------------------------------|
| | | | Private capital | | | State majority capital | | | Mixed capital (state+private) |
| | out of which: | | | out of which: | | | | | |
| | PF+AF | Companies | OC | RA | Companies | Companies | | | |
| No. | % | No. | No. | No. | No. | No. | No. | | |
| 0 | 1 | 2 | 3 | 4 | 5 | 6 | 7 | 8 | 9 |
| Total ROMÂNIA | 1631063 | 100,0 | 420101 | 1193271 | 5397 | 1342 | 2364 | 8588 | X |
| ALBA | 25561 | 1,6 | 8834 | 16331 | 141 | 38 | 47 | 170 | 25 |
| ARAD | 40130 | 2,5 | 15282 | 24288 | 157 | 27 | 41 | 335 | 15 |
| ARGES | 42050 | 2,6 | 13587 | 28085 | 168 | 29 | 29 | 152 | 10 |
| BACAU | 40941 | 2,5 | 13567 | 26916 | 158 | 35 | 42 | 223 | 14 |
| BIHOR | 49270 | 3,0 | 11427 | 37290 | 146 | 37 | 62 | 308 | 8 |
| BISTRITA-NASAUD | 19869 | 1,2 | 7047 | 12567 | 98 | 19 | 29 | 109 | 33 |
| BOTOSANI | 20116 | 1,2 | 9238 | 10444 | 122 | 21 | 172 | 119 | 32 |
| BRASOV | 50794 | 3,1 | 10551 | 39828 | 114 | 44 | 87 | 170 | 6 |
| BRAILA | 22449 | 1,4 | 5616 | 16500 | 96 | 28 | 43 | 166 | 28 |
| BUZAU | 29933 | 1,8 | 8777 | 20815 | 142 | 26 | 42 | 131 | 21 |
| CARAS-SEVERIN | 20132 | 1,2 | 6933 | 12860 | 102 | 35 | 65 | 137 | 31 |
| CALARASI | 16359 | 1,0 | 4816 | 11267 | 86 | 18 | 77 | 95 | 38 |
| CLUJ | 75047 | 4,6 | 18969 | 55574 | 150 | 52 | 40 | 262 | 2 |
| CONSTANTA | 68367 | 4,2 | 13147 | 54376 | 203 | 51 | 49 | 541 | 3 |
| COVASNA | 13957 | 0,9 | 4766 | 8958 | 68 | 24 | 32 | 109 | 41 |
| DAMBOVITA | 30511 | 1,9 | 13901 | 16219 | 134 | 29 | 75 | 153 | 20 |
| DOLJ | 43113 | 2,6 | 8756 | 33895 | 162 | 40 | 57 | 203 | 9 |
| GALATI | 38532 | 2,4 | 7673 | 30500 | 135 | 30 | 51 | 143 | 16 |
| GIURGIU | 13214 | 0,8 | 3162 | 9731 | 80 | 22 | 109 | 110 | 42 |
| GORJ | 19505 | 1,2 | 4637 | 14451 | 184 | 50 | 83 | 100 | 34 |
| HARGHITA | 24936 | 1,5 | 9962 | 14593 | 86 | 23 | 43 | 229 | 26 |
| HUNEDOARA | 33497 | 2,1 | 8836 | 24167 | 81 | 39 | 92 | 282 | 18 |
| IALOMITA | 15223 | 0,9 | 5817 | 9180 | 74 | 15 | 46 | 91 | 40 |
| IASI | 50441 | 3,1 | 13846 | 35983 | 164 | 34 | 70 | 344 | 7 |
| MARAMURES | 41934 | 2,6 | 16917 | 24694 | 124 | 37 | 39 | 123 | 11 |
| MEHEDINTI | 18407 | 1,1 | 5868 | 12313 | 82 | 19 | 27 | 98 | 36 |
| MURES | 41073 | 2,5 | 15155 | 25531 | 156 | 30 | 34 | 167 | 13 |
| NEAMT | 36032 | 2,2 | 13358 | 22289 | 161 | 29 | 30 | 165 | 17 |
| OLT | 23020 | 1,4 | 9056 | 13590 | 161 | 26 | 64 | 123 | 27 |
| PRAHOVA | 53891 | 3,3 | 16612 | 36711 | 177 | 50 | 70 | 271 | 5 |
| SALAJ | 15813 | 1,0 | 6146 | 9450 | 107 | 19 | 28 | 63 | 39 |
| SATU MARE | 27489 | 1,7 | 9013 | 18193 | 88 | 19 | 42 | 134 | 22 |
| SIBIU | 31590 | 1,9 | 7680 | 23492 | 119 | 33 | 108 | 158 | 19 |
| SUCEAVA | 41701 | 2,6 | 19942 | 21243 | 202 | 30 | 64 | 220 | 12 |
| TELEORMAN | 18416 | 1,1 | 6373 | 11644 | 152 | 21 | 44 | 182 | 35 |
| TIMIS | 57130 | 3,5 | 9207 | 47329 | 140 | 38 | 68 | 348 | 4 |
| TULCEA | 16819 | 1,0 | 5806 | 10675 | 66 | 18 | 42 | 212 | 37 |
| VASLUI | 20851 | 1,3 | 10075 | 10475 | 109 | 16 | 41 | 135 | 29 |
| VALCEA | 26982 | 1,7 | 10657 | 15967 | 168 | 40 | 37 | 113 | 23 |
| VRANCEA | 20202 | 1,2 | 6165 | 13776 | 104 | 16 | 27 | 114 | 30 |
| MUN. BUCURESTI | 309469 | 19,0 | 19552 | 288445 | 138 | 115 | 103 | 1116 | 1 |
| ILFOV | 26297 | 1,6 | 3372 | 22636 | 92 | 20 | 13 | 164 | 24 |

*) The total number of incorporations (col 1)

*** Less than 0,01%

Table no. 5

**The number of incorporations in the Trade Register,
by counties and categories, during the period of
December 1990 - June 2007**

| County | Total | | out of which: | | | | | | |
|----------------------|----------------|--------------|---------------|--------------------|-------------|----------------|--------------|-------------|-------------|
| | | | PF+AF | companies: 1204223 | | | | RA | OC |
| | SNC | SCS | | SRL | SA | | | | |
| | No. | % | No. | No. | No. | No. | No. | No. | |
| 0 | 1 | 2 | 3 | 4 | 5 | 6 | 7 | 8 | 9 |
| Total ROMÂNIA | 1631063 | 100,0 | 420101 | 32655 | 1567 | 1137860 | 32135 | 1342 | 5397 |
| ALBA | 25561 | 1,6 | 8834 | 890 | 11 | 15095 | 552 | 38 | 141 |
| ARAD | 40129 | 2,5 | 15282 | 53 | 11 | 23925 | 673 | 27 | 157 |
| ARGES | 42050 | 2,6 | 13587 | 107 | 14 | 27327 | 818 | 29 | 168 |
| BACAU | 40941 | 2,5 | 13567 | 1299 | 4 | 25153 | 724 | 35 | 158 |
| BIHOR | 49270 | 3,0 | 11427 | 126 | 47 | 36596 | 891 | 37 | 146 |
| BISTRITA-NASAUD | 19869 | 1,2 | 7047 | 146 | 21 | 12126 | 412 | 19 | 98 |
| BOTOSANI | 20116 | 1,2 | 9238 | 468 | 1 | 9816 | 450 | 21 | 122 |
| BRASOV | 50794 | 3,1 | 10551 | 239 | 20 | 38981 | 845 | 44 | 114 |
| BRAILA | 22449 | 1,4 | 5616 | 376 | 12 | 15805 | 516 | 28 | 96 |
| BUZAU | 29933 | 1,8 | 8777 | 3747 | 46 | 16628 | 567 | 26 | 142 |
| CARAS-SEVERIN | 20132 | 1,2 | 6933 | 117 | 8 | 12475 | 462 | 35 | 102 |
| CALARASI | 16359 | 1,0 | 4816 | 609 | 3 | 10478 | 349 | 18 | 86 |
| CLUJ | 75047 | 4,6 | 18969 | 2112 | 18 | 52489 | 1257 | 52 | 150 |
| CONSTANTA | 68367 | 4,2 | 13147 | 311 | 23 | 53168 | 1464 | 51 | 203 |
| COVASNA | 13957 | 0,9 | 4766 | 148 | 4 | 8651 | 296 | 24 | 68 |
| DAMBOVITA | 30511 | 1,9 | 13901 | 60 | 8 | 15893 | 486 | 29 | 134 |
| DOLJ | 43113 | 2,6 | 8756 | 1560 | 8 | 31721 | 866 | 40 | 162 |
| GALATI | 38532 | 2,4 | 7673 | 1574 | 6 | 28279 | 835 | 30 | 135 |
| GIURGIU | 13214 | 0,8 | 3162 | 35 | 8 | 9585 | 322 | 22 | 80 |
| GORJ | 19505 | 1,2 | 4637 | 29 | 1 | 14117 | 487 | 50 | 184 |
| HARGHITA | 24936 | 1,5 | 9962 | 62 | 6 | 14313 | 484 | 23 | 86 |
| HUNEDOARA | 33497 | 2,1 | 8836 | 1166 | 98 | 22612 | 665 | 39 | 81 |
| IALOMITA | 15223 | 0,9 | 5817 | 266 | 11 | 8696 | 344 | 15 | 74 |
| IASI | 50441 | 3,1 | 13846 | 506 | 111 | 34780 | 998 | 34 | 164 |
| MARAMURES | 41934 | 2,6 | 16917 | 1927 | 23 | 22320 | 585 | 37 | 124 |
| MEHEDINTI | 18407 | 1,1 | 5868 | 427 | 3 | 11682 | 326 | 19 | 82 |
| MURES | 41073 | 2,5 | 15155 | 37 | 34 | 25004 | 657 | 30 | 156 |
| NEAMT | 36032 | 2,2 | 13358 | 3293 | 30 | 18497 | 664 | 29 | 161 |
| OLT | 23020 | 1,4 | 9056 | 1611 | 1 | 11679 | 486 | 26 | 161 |
| PRAHOVA | 53891 | 3,3 | 16612 | 3122 | 14 | 33030 | 886 | 50 | 177 |
| SALAJ | 15813 | 1,0 | 6146 | 600 | 4 | 8647 | 290 | 19 | 107 |
| SATU MARE | 27489 | 1,7 | 9013 | 283 | 6 | 17613 | 467 | 19 | 88 |
| SIBIU | 31590 | 1,9 | 7680 | 776 | 48 | 22285 | 649 | 33 | 119 |
| SUCEAVA | 41701 | 2,6 | 19942 | 438 | 8 | 20499 | 582 | 30 | 202 |
| TELEORMAN | 18416 | 1,1 | 6373 | 272 | 399 | 10787 | 412 | 21 | 152 |
| TIMIS | 57130 | 3,5 | 9207 | 609 | 27 | 45872 | 1237 | 38 | 140 |
| TULCEA | 16819 | 1,0 | 5806 | 1363 | 114 | 8979 | 473 | 18 | 66 |
| VASLUI | 20851 | 1,3 | 10075 | 90 | 12 | 10147 | 402 | 16 | 109 |
| VALCEA | 26982 | 1,7 | 10657 | 364 | 6 | 15264 | 483 | 40 | 168 |
| VRANCEA | 20202 | 1,2 | 6165 | 356 | 10 | 13106 | 445 | 16 | 104 |
| MUN. BUCURESTI | 309470 | 19,0 | 19552 | 1032 | 297 | 281601 | 6734 | 115 | 138 |
| ILFOV | 26297 | 1,6 | 3372 | 49 | 31 | 22139 | 594 | 20 | 92 |

Table no. 6

**The number of incorporations in the Trade Register, by field of activity*
during the period of December 1990 - June 2007**

| CAEN segment | Field of activity | Total | | out of which: | | | | | | |
|-----------------|---|----------------|--------------|---------------|--------------------|-------------|----------------|--------------|-------------|-------------|
| | | | | PF+AF | companies: 1204223 | | | | RA | OC |
| | | No. | % | | No. | SNC | SCS | SRL | | |
| | | | | No. | | No. | No. | No. | No. | No. |
| 0 | 1 | 2 | 3 | 4 | 5 | 6 | 7 | 8 | 9 | 10 |
| | Total ROMANIA | 1631063 | 100,0 | 420101 | 32655 | 1567 | 1137860 | 32135 | 1342 | 5397 |
| 1 | Agriculture, hunting and related service activities | 65485 | 4,0 | 16840 | 2024 | 44 | 42617 | 3790 | 53 | 117 |
| 2 | Forestry, logging and related service activities | 8694 | 0,5 | 1142 | 152 | 3 | 7074 | 222 | 93 | 8 |
| 5 | Fishing, fish farming and related service activities | 3249 | 0,2 | 1869 | 17 | 3 | 1306 | 54 | | |
| 10 | Mining of coal and lignite; extraction of peat | 120 | 0,0 | 2 | | | 82 | 32 | 4 | |
| 11 | Extraction of crude petroleum and natural gas; service activities incidental to oil and gas extraction, excluding surveying | 353 | 0,0 | 16 | 1 | | 166 | 124 | 46 | |
| 12 | Mining of uranium and thorium ores | 133 | 0,0 | 32 | | | 95 | 6 | | |
| 13 | Mining of metal ores | 537 | 0,0 | 163 | | | 311 | 55 | 8 | |
| 14 | Other mining and quarrying | 1709 | 0,1 | 109 | 9 | 1 | 1417 | 170 | 2 | 1 |
| 15 | Manufacture of food products and beverages | 74051 | 4,5 | 14759 | 3260 | 149 | 53771 | 1859 | 5 | 248 |
| 16 | Manufacture of tobacco products | 291 | 0,0 | 47 | | | 212 | 31 | 1 | |
| 17 | Manufacture of textiles | 11880 | 0,7 | 2423 | 556 | 16 | 8334 | 406 | | 145 |
| 18 | Manufacture of wearing apparel; dressing and dyeing of fur | 21294 | 1,3 | 4864 | 875 | 38 | 14853 | 358 | 1 | 305 |
| 19 | Tanning and dressing of leather; manufacture of luggage, handbags, saddlery, harness and footwear | 5407 | 0,3 | 923 | 112 | 6 | 4191 | 123 | 1 | 51 |
| 20 | Manufacture of wood and of products of wood and cork, except furniture; manufacture of articles of straw and plaiting materials | 25674 | 1,6 | 9172 | 575 | 29 | 15348 | 499 | 9 | 42 |
| 21 | Manufacture of pulp, paper and paper products | 1837 | 0,1 | 127 | 21 | 1 | 1577 | 98 | | 13 |
| 22 | Publishing, printing and reproduction of recorded media | 12146 | 0,7 | 978 | 317 | 21 | 10401 | 405 | 14 | 10 |
| 23 | Manufacture of coke, refined petroleum products and nuclear fuel | 263 | 0,0 | 24 | | | 203 | 34 | 2 | |
| 24 | Manufacture of chemicals and chemical products | 3774 | 0,2 | 120 | 89 | 1 | 3174 | 378 | 6 | 6 |
| 25 | Manufacture of rubber and plastic products | 6442 | 0,4 | 581 | 314 | 7 | 5255 | 260 | | 24 |
| 26 | Manufacture of other non-metallic mineral products | 9607 | 0,6 | 2958 | 212 | 6 | 6026 | 386 | 5 | 14 |
| 27 | Manufacture of basic metals | 2466 | 0,2 | 173 | 39 | 3 | 2033 | 208 | 3 | 7 |
| 28 | Manufacture of fabricated metal products, except machinery and equipment | 17972 | 1,1 | 4502 | 361 | 23 | 12288 | 725 | 11 | 62 |
| 29 | Manufacture of machinery and equipment n.e.c. | 3887 | 0,2 | 111 | 44 | 7 | 3280 | 421 | 19 | 5 |
| 30 | Manufacture of office machinery and computers | 1788 | 0,1 | 16 | 25 | 4 | 1663 | 80 | | |
| 31 | Manufacture of electrical machinery and apparatus n.e.c. | 1981 | 0,1 | 112 | 44 | 6 | 1669 | 144 | | 6 |
| 32 | Manufacture of radio, television and communication equipment and apparatus | 882 | 0,1 | 63 | 14 | 4 | 727 | 73 | | 1 |
| 33 | Manufacture of medical, precision and optical instruments, watches and clocks | 2717 | 0,2 | 648 | 17 | 2 | 1941 | 105 | | 4 |
| 34 | Manufacture of motor vehicles, trailers and semi-trailers | 936 | 0,1 | 31 | 31 | 3 | 743 | 126 | | 2 |
| 35 | Manufacture of other transport equipment | 1986 | 0,1 | 292 | 86 | 7 | 1401 | 125 | 73 | 2 |
| 36 | Manufacture of furniture; manufacturing n.e.c. | 16072 | 1,0 | 4580 | 284 | 16 | 10693 | 336 | 5 | 158 |
| 37 | Recycling | 5101 | 0,3 | 442 | 51 | 5 | 4427 | 175 | | 1 |
| 40 | Electricity, gas, steam and hot water supply | 3041 | 0,2 | 839 | 3 | 1 | 1578 | 532 | 88 | |
| 41 | Collection, purification and distribution of water | 3571 | 0,2 | 1631 | 2 | | 1659 | 206 | 73 | |
| 45 | Construction | 105426 | 6,5 | 27569 | 611 | 44 | 74618 | 2454 | 53 | 77 |

Table no. 6
(continuing)

**The number of incorporations in the Trade Register, by field of activity*
and categories, during the period of December 1990 - June 2007**

| CAEN segment | Field of activity | Total | | out of which: | | | | | | RA | OC |
|-----------------|--|----------------|--------------|---------------|--------------------|-------------|----------------|--------------|-------------|-------------|-----|
| | | | | PF+AF | companies: 1204223 | | | | | | |
| | | No. | % | | No. | SNC | SCS | SRL | SA | No. | No. |
| | | | | No. | | No. | No. | No. | | | |
| 0 | 1 | 2 | 3 | 4 | 5 | 6 | 7 | 8 | 9 | 10 | |
| | Total ROMÂNIA | 1631063 | 100,0 | 420101 | 32655 | 1567 | 1137860 | 32135 | 1342 | 5397 | |
| 50 | Sale, maintenance and repair of motor vehicles and motorcycles; retail sale of automotive fuel | 56024 | 3,4 | 8927 | 1244 | | 44744 | 1027 | 6 | 42 | |
| 51 | Wholesale trade and commission trade, except of motor vehicles and motorcycles | 209206 | 12,8 | 19048 | 4524 | 151 | 181853 | 3313 | 35 | 282 | |
| 52 | Retail trade, except of motor vehicles and motorcycles; repair of personal and household goods | 511639 | 31,4 | 181988 | 11915 | 558 | 312289 | 2497 | 6 | 2385 | |
| 55 | Hotels and restaurants | 62813 | 3,9 | 14823 | 1635 | 126 | 45272 | 789 | 73 | 95 | |
| 60 | Land transport; transport via pipelines | 85269 | 5,2 | 36820 | 845 | 37 | 46465 | 1059 | 33 | 10 | |
| 61 | Water transport | 886 | 0,1 | 171 | 82 | 8 | 490 | 64 | 70 | 1 | |
| 62 | Air transport | 304 | 0,0 | 18 | | | 228 | 48 | 10 | | |
| 63 | Supporting and auxiliary transport activities; activities of travel agencies | 10897 | 0,7 | 747 | 220 | 14 | 9367 | 442 | 96 | 11 | |
| 64 | Post and telecommunications | 7826 | 0,5 | 876 | 11 | 1 | 6619 | 305 | 11 | 3 | |
| 65 | Financial intermediation, except insurance and pension funding | 6653 | 0,4 | 147 | 15 | | 3015 | 2441 | 2 | 1033 | |
| 66 | Insurance and pension funding, except compulsory social security | 2068 | 0,1 | 614 | 1 | | 515 | 937 | | 1 | |
| 67 | Activities auxiliary to financial intermediation | 7333 | 0,4 | 1288 | 7 | 2 | 5738 | 290 | | 8 | |
| 70 | Real estate activities | 26733 | 1,6 | 785 | 29 | 9 | 25219 | 667 | 17 | 7 | |
| 71 | Renting of machinery and equipment without operator and of personal and household goods | 3778 | 0,2 | 715 | 116 | 8 | 2770 | 98 | 70 | 1 | |
| 72 | Computer and related activities | 25482 | 1,6 | 5555 | 120 | 13 | 19404 | 385 | 2 | 3 | |
| 73 | Research and development | 1792 | 0,1 | 253 | 11 | 2 | 1308 | 173 | 43 | 2 | |
| 74 | Other business activities | 118812 | 7,3 | 24905 | 794 | 74 | 91189 | 1683 | 106 | 60 | |
| 75 | Public administration and defence; compulsory social security | 363 | 0,0 | 91 | 5 | | 219 | 26 | 21 | 1 | |
| 80 | Education | 7509 | 0,5 | 3802 | 62 | 6 | 3573 | 66 | | | |
| 85 | Health and social work | 16803 | 1,0 | 2149 | 233 | 15 | 14317 | 85 | 3 | 1 | |
| 90 | Sewage and refuse disposal, sanitation and similar activities | 1003 | 0,1 | 107 | 13 | 2 | 751 | 110 | 18 | | |
| 91 | Activities of membership organizations n.e.c. | 214 | 0,0 | 94 | 1 | | 101 | 15 | | 3 | |
| 92 | Recreational, cultural and sporting activities | 17898 | 1,1 | 4981 | 202 | 14 | 12317 | 303 | 69 | 12 | |
| 93 | Other service activities | 27942 | 1,7 | 12345 | 418 | 42 | 14627 | 307 | 76 | 126 | |
| 95 | Activities of households as employers of domestic staff | 960 | 0,1 | 633 | 6 | 1 | 316 | 3 | | 1 | |
| 96 | Extra-territorial organizations and bodies | 11 | 0,0 | 11 | | | | | | | |

*)Field of activity declared when registered, according to CAEN classification

Table no. 7

**Operations carried on with the Trade Registers,
by counties and categories,
in June 2007**

| County | Total of operations carried on | | out of which: | | | | | | | |
|----------------------|--------------------------------------|--------------|-----------------------|------------|--------------------------------------|-------------|---|------------|-------------------------|------------|
| | | | New incorporations | | Changes in statutory documents | | out of which: of liquidation, dissolution | | Strike off companies | |
| | No. | % | No. | % | No. | % | No. | % | No. | % |
| 0 | 1 | 2 | 3 | 4 | 5 | 6 | 7 | 8 | 9 | 10 |
| Total ROMÂNIA | 209358 | 100,0 | 12463 | 6,0 | 194115 | 92,7 | 12694 | 6,1 | 2780 | 1,3 |
| ALBA | 880 | 100,0 | 223 | 25,3 | 611 | 69,4 | 16 | 1,8 | 46 | 5,2 |
| ARAD | 2437 | 100,0 | 296 | 12,1 | 2113 | 86,7 | 186 | 7,6 | 28 | 1,1 |
| ARGES | 2164 | 100,0 | 326 | 15,1 | 1787 | 82,6 | 74 | 3,4 | 51 | 2,4 |
| BACAU | 10807 | 100,0 | 245 | 2,3 | 10519 | 97,3 | 7 | 0,1 | 43 | 0,4 |
| BIHOR | 1869 | 100,0 | 469 | 25,1 | 1298 | 69,4 | 19 | 1,0 | 102 | 5,5 |
| BISTRITA-NASAUD | 623 | 100,0 | 164 | 26,3 | 426 | 68,4 | 9 | 1,4 | 33 | 5,3 |
| BOTOSANI | 1601 | 100,0 | 135 | 8,4 | 1426 | 89,1 | 1 | 0,1 | 40 | 2,5 |
| BRASOV | 6664 | 100,0 | 411 | 6,2 | 6187 | 92,8 | 126 | 1,9 | 66 | 1,0 |
| BRAILA | 4864 | 100,0 | 120 | 2,5 | 4725 | 97,1 | 1 | 0,0 | 19 | 0,4 |
| BUZAU | 2537 | 100,0 | 212 | 8,4 | 2283 | 90,0 | 78 | 3,1 | 42 | 1,7 |
| CARAS-SEVERIN | 2351 | 100,0 | 136 | 5,8 | 2187 | 93,0 | 25 | 1,1 | 28 | 1,2 |
| CALARASI | 2297 | 100,0 | 87 | 3,8 | 2207 | 96,1 | 5 | 0,2 | 3 | 0,1 |
| CLUJ | 6663 | 100,0 | 682 | 10,2 | 5867 | 88,1 | 361 | 5,4 | 114 | 1,7 |
| CONSTANTA | 4453 | 100,0 | 546 | 12,3 | 3816 | 85,7 | 222 | 5,0 | 91 | 2,0 |
| COVASNA | 4744 | 100,0 | 101 | 2,1 | 4628 | 97,6 | 3 | 0,1 | 15 | 0,3 |
| DAMBOVITA | 2052 | 100,0 | 233 | 11,4 | 1777 | 86,6 | 736 | 35,9 | 42 | 2,0 |
| DOLJ | 12570 | 100,0 | 285 | 2,3 | 12242 | 97,4 | 1494 | 11,9 | 43 | 0,3 |
| GALATI | 3571 | 100,0 | 218 | 6,1 | 3322 | 93,0 | 14 | 0,4 | 31 | 0,9 |
| GIURGIU | 503 | 100,0 | 95 | 18,9 | 397 | 78,9 | 2 | 0,4 | 11 | 2,2 |
| GORJ | 937 | 100,0 | 139 | 14,8 | 747 | 79,7 | 18 | 1,9 | 51 | 5,4 |
| HARGHITA | 3304 | 100,0 | 268 | 8,1 | 2797 | 84,7 | 5 | 0,2 | 239 | 7,2 |
| HUNEDOARA | 1097 | 100,0 | 177 | 16,1 | 852 | 77,7 | 137 | 12,5 | 68 | 6,2 |
| IALOMITA | 2841 | 100,0 | 83 | 2,9 | 2696 | 94,9 | 68 | 2,4 | 62 | 2,2 |
| IASI | 4232 | 100,0 | 396 | 9,4 | 3704 | 87,5 | 56 | 1,3 | 132 | 3,1 |
| MARAMURES | 3115 | 100,0 | 282 | 9,1 | 2750 | 88,3 | 55 | 1,8 | 83 | 2,7 |
| MEHEDINTI | 1297 | 100,0 | 126 | 9,7 | 1143 | 88,1 | 44 | 3,4 | 28 | 2,2 |
| MURES | 13053 | 100,0 | 298 | 2,3 | 12684 | 97,2 | 123 | 0,9 | 71 | 0,5 |
| NEAMT | 7725 | 100,0 | 234 | 3,0 | 7459 | 96,6 | 9 | 0,1 | 32 | 0,4 |
| OLT | 905 | 100,0 | 111 | 12,3 | 728 | 80,4 | 3 | 0,3 | 66 | 7,3 |
| PRAHOVA | 16407 | 100,0 | 481 | 2,9 | 15770 | 96,1 | 247 | 1,5 | 156 | 1,0 |
| SALAJ | 1837 | 100,0 | 154 | 8,4 | 1647 | 89,7 | 54 | 2,9 | 36 | 2,0 |
| SATU MARE | 1183 | 100,0 | 216 | 18,3 | 853 | 72,1 | 31 | 2,6 | 114 | 9,6 |
| SIBIU | 10210 | 100,0 | 289 | 2,8 | 9847 | 96,4 | 60 | 0,6 | 74 | 0,7 |
| SUCEAVA | 7584 | 100,0 | 336 | 4,4 | 7172 | 94,6 | 142 | 1,9 | 76 | 1,0 |
| TELEORMAN | 4576 | 100,0 | 126 | 2,8 | 4396 | 96,1 | 25 | 0,5 | 54 | 1,2 |
| TIMIS | 2623 | 100,0 | 557 | 21,2 | 1951 | 74,4 | 16 | 0,6 | 115 | 4,4 |
| TULCEA | 3768 | 100,0 | 104 | 2,8 | 3636 | 96,5 | 5 | 0,1 | 28 | 0,7 |
| VASLUI | 1008 | 100,0 | 118 | 11,7 | 853 | 84,6 | 5 | 0,5 | 37 | 3,7 |
| VALCEA | 6846 | 100,0 | 179 | 2,6 | 6614 | 96,6 | 4 | 0,1 | 53 | 0,8 |
| VRANCEA | 2075 | 100,0 | 131 | 6,3 | 1885 | 90,8 | 4 | 0,2 | 59 | 2,8 |
| MUN. BUCURESTI | 35384 | 100,0 | 2303 | 6,5 | 32814 | 92,7 | 8198 | 23,2 | 267 | 0,8 |
| ILFOV | 3701 | 100,0 | 371 | 10,0 | 3299 | 89,1 | 6 | 0,2 | 31 | 0,8 |

*) by effect of implementation of Law no. 314/2001, art.1 and art. 6

*** Less than 0,01%

Table no. 8

**The number of incorporations in the Trade Register,
by counties and sources of capital,
in June 2007**

| County | Total | | out of which: | | | | | Rnking by: * | |
|----------------------|--------------|--------------|-----------------|-------------|-----|------------------------|---------------|-----------------|--------------------------------|
| | | | Private capital | | | State majority capital | | | Mixed capital (state+priva) |
| | | | out of which: | | | out of which: | | | |
| | | | PF+AF | Companies | OC | RA | Companie s | | Companie s |
| No. | % | No. | No. | No. | No. | No. | No. | | |
| 0 | 1 | 2 | 3 | 4 | 5 | 6 | 7 | 8 | 9 |
| Total ROMÂNIA | 12463 | 100,0 | 3823 | 8637 | | 1 | 1 | 1 | X |
| ALBA | 223 | 1,8 | 91 | 132 | | | | | 21 |
| ARAD | 296 | 2,4 | 96 | 198 | | | 1 | 1 | 13 |
| ARGES | 326 | 2,6 | 97 | 229 | | | | | 11 |
| BACAU | 245 | 2,0 | 86 | 159 | | | | | 18 |
| BIHOR | 469 | 3,8 | 170 | 299 | | | | | 6 |
| BISTRITA-NASAUD | 164 | 1,3 | 51 | 113 | | | | | 27 |
| BOTOSANI | 135 | 1,1 | 77 | 58 | | | | | 31 |
| BRASOV | 411 | 3,3 | 106 | 305 | | | | | 7 |
| BRAILA | 120 | 1,0 | 37 | 83 | | | | | 35 |
| BUZAU | 212 | 1,7 | 85 | 127 | | | | | 24 |
| CARAS-SEVERIN | 136 | 1,1 | 31 | 105 | | | | | 30 |
| CALARASI | 87 | 0,7 | 24 | 63 | | | | | 41 |
| CLUJ | 682 | 5,5 | 201 | 481 | | | | | 2 |
| CONSTANTA | 546 | 4,4 | 165 | 381 | | | | | 4 |
| COVASNA | 101 | 0,8 | 46 | 55 | | | | | 39 |
| DAMBOVITA | 233 | 1,9 | 100 | 133 | | | | | 20 |
| DOLJ | 285 | 2,3 | 83 | 202 | | | | | 15 |
| GALATI | 218 | 1,7 | 58 | 160 | | | | | 22 |
| GIURGIU | 95 | 0,8 | 19 | 76 | | | | | 40 |
| GORJ | 139 | 1,1 | 57 | 82 | | | | | 29 |
| HARGHITA | 268 | 2,2 | 153 | 115 | | | | | 17 |
| HUNEDOARA | 177 | 1,4 | 60 | 116 | | 1 | | | 26 |
| IALOMITA | 83 | 0,7 | 25 | 58 | | | | | 42 |
| IASI | 396 | 3,2 | 114 | 282 | | | | | 8 |
| MARAMURES | 282 | 2,3 | 102 | 180 | | | | | 16 |
| MEHEDINTI | 126 | 1,0 | 54 | 72 | | | | | 33 |
| MURES | 298 | 2,4 | 111 | 187 | | | | | 12 |
| NEAMT | 234 | 1,9 | 98 | 136 | | | | | 19 |
| OLT | 111 | 0,9 | 37 | 74 | | | | | 37 |
| PRAHOVA | 481 | 3,9 | 190 | 291 | | | | | 5 |
| SALAJ | 154 | 1,2 | 63 | 91 | | | | | 28 |
| SATU MARE | 216 | 1,7 | 91 | 125 | | | | | 23 |
| SIBIU | 289 | 2,3 | 86 | 203 | | | | | 14 |
| SUCEAVA | 336 | 2,7 | 185 | 151 | | | | | 10 |
| TELEORMAN | 126 | 1,0 | 46 | 80 | | | | | 34 |
| TIMIS | 557 | 4,5 | 165 | 392 | | | | | 3 |
| TULCEA | 104 | 0,8 | 46 | 58 | | | | | 38 |
| VASLUI | 118 | 0,9 | 46 | 72 | | | | | 36 |
| VALCEA | 179 | 1,4 | 99 | 80 | | | | | 25 |
| VRANCEA | 131 | 1,1 | 47 | 84 | | | | | 32 |
| MUN. BUCURESTI | 2303 | 18,5 | 281 | 2022 | | | | | 1 |
| ILFOV | 371 | 3,0 | 44 | 327 | | | | | 9 |

*) The total number of incorporations (col 1)

*** Less than 0,01%

Table no.9

**The number of incorporations in the Trade Register,
by counties and category
in June 2007**

| County | Total | | out of which: | | | | | | RA | OC |
|----------------------|--------------|--------------|---------------|-----------------|-----|-------------|-----------|----------|-----|-----|
| | | | PF+AF | companies: 8639 | | | | | | |
| | No. | % | | No. | SNC | SCS | SRL | SA | No. | No. |
| | | | No. | | No. | No. | No. | | | |
| 0 | 1 | 2 | 3 | 4 | 5 | 6 | 7 | 8 | 9 | |
| Total ROMÂNIA | 12463 | 100,0 | 3823 | 1 | | 8555 | 83 | 1 | | |
| ALBA | 223 | 1,8 | 91 | | | 132 | | | | |
| ARAD | 296 | 2,4 | 96 | | | 199 | 1 | | | |
| ARGES | 326 | 2,6 | 97 | | | 227 | 2 | | | |
| BACAU | 245 | 2,0 | 86 | | | 159 | | | | |
| BIHOR | 469 | 3,8 | 170 | | | 296 | 3 | | | |
| BISTRITA-NASAUD | 164 | 1,3 | 51 | | | 113 | | | | |
| BOTOSANI | 135 | 1,1 | 77 | | | 58 | | | | |
| BRASOV | 411 | 3,3 | 106 | | | 305 | | | | |
| BRAILA | 120 | 1,0 | 37 | | | 83 | | | | |
| BUZAU | 212 | 1,7 | 85 | | | 124 | 3 | | | |
| CARAS-SEVERIN | 136 | 1,1 | 31 | | | 105 | | | | |
| CALARASI | 87 | 0,7 | 24 | | | 63 | | | | |
| CLUJ | 682 | 5,5 | 201 | | | 479 | 2 | | | |
| CONSTANTA | 546 | 4,4 | 165 | | | 378 | 3 | | | |
| COVASNA | 101 | 0,8 | 46 | | | 55 | | | | |
| DAMBOVITA | 233 | 1,9 | 100 | | | 133 | | | | |
| DOLJ | 285 | 2,3 | 83 | | | 201 | 1 | | | |
| GALATI | 218 | 1,7 | 58 | | | 157 | 3 | | | |
| GIURGIU | 95 | 0,8 | 19 | | | 76 | | | | |
| GORJ | 139 | 1,1 | 57 | | | 82 | | | | |
| HARGHITA | 268 | 2,2 | 153 | | | 115 | | | | |
| HUNEDOARA | 177 | 1,4 | 60 | | | 115 | 1 | 1 | | |
| IALOMITA | 83 | 0,7 | 25 | | | 58 | | | | |
| IASI | 396 | 3,2 | 114 | | | 280 | 2 | | | |
| MARAMURES | 282 | 2,3 | 102 | | | 179 | 1 | | | |
| MEHEDINTI | 126 | 1,0 | 54 | | | 71 | 1 | | | |
| MURES | 298 | 2,4 | 111 | | | 185 | 2 | | | |
| NEAMT | 234 | 1,9 | 98 | | | 135 | 1 | | | |
| OLT | 111 | 0,9 | 37 | | | 74 | | | | |
| PRAHOVA | 481 | 3,9 | 190 | | | 290 | 1 | | | |
| SALAJ | 154 | 1,2 | 63 | | | 91 | | | | |
| SATU MARE | 216 | 1,7 | 91 | | | 124 | 1 | | | |
| SIBIU | 289 | 2,3 | 86 | | | 199 | 4 | | | |
| SUCEAVA | 336 | 2,7 | 185 | | | 150 | 1 | | | |
| TELEORMAN | 126 | 1,0 | 46 | | | 80 | | | | |
| TIMIS | 557 | 4,5 | 165 | | | 392 | | | | |
| TULCEA | 104 | 0,8 | 46 | | | 58 | | | | |
| VASLUI | 118 | 0,9 | 46 | | | 71 | 1 | | | |
| VALCEA | 179 | 1,4 | 99 | | | 80 | | | | |
| VRANCEA | 131 | 1,1 | 47 | | | 83 | 1 | | | |
| MUN. BUCURESTI | 2303 | 18,5 | 281 | 1 | | 1980 | 41 | | | |
| ILFOV | 371 | 3,0 | 44 | | | 320 | 7 | | | |

Table no. 10

**The number of incorporations in the Trade Register, by field of activity*
and categories in June 2007**

| CAEN segment | Field of activity | Total | | out of which: | | | | | | |
|-----------------|---|--------------|--------------|---------------|-----------------|-----|-------------|-----------|----------|-----|
| | | | | PF+AF | companies: 8639 | | | | RA | OC |
| | | SNC | SCS | | SRL | SA | | | | |
| | | No. | % | No. | No. | No. | No. | No. | No. | No. |
| 0 | 1 | 2 | 3 | 4 | 5 | 6 | 7 | 8 | 9 | 10 |
| | Total ROMÂNIA | 12463 | 100,0 | 3823 | 1 | | 8555 | 83 | 1 | |
| 1 | Agriculture, hunting and related service activities | 363 | 2,9 | 219 | | | 142 | 2 | | |
| 2 | Forestry, logging and related service activities | 58 | 0,5 | 11 | | | 46 | | 1 | |
| 5 | Fishing, fish farming and related service activities | 33 | 0,3 | 24 | | | 9 | | | |
| 10 | Mining of coal and lignite; extraction of peat | 2 | 0,0 | | | | 2 | | | |
| 11 | Extraction of crude petroleum and natural gas; service activities incidental to oil and gas extraction, excluding surveying | 2 | 0,0 | | | | 2 | | | |
| 12 | Mining of uranium and thorium ores | | | | | | | | | |
| 13 | Mining of metal ores | 1 | 0,0 | | | | 1 | | | |
| 14 | Other mining and quarrying | 19 | 0,2 | | | | 19 | | | |
| 15 | Manufacture of food products and beverages | 124 | 1,0 | 63 | | | 60 | 1 | | |
| 16 | Manufacture of tobacco products | | | | | | | | | |
| 17 | Manufacture of textiles | 24 | 0,2 | 7 | | | 17 | | | |
| 18 | Manufacture of wearing apparel; dressing and dyeing of fur | 70 | 0,6 | 15 | | | 55 | | | |
| 19 | Tanning and dressing of leather; manufacture of luggage, handbags, saddlery, harness and footwear | 21 | 0,2 | 5 | | | 16 | | | |
| 20 | Manufacture of wood and of products of wood and cork, except furniture; manufacture of articles of straw and plaiting materials | 115 | 0,9 | 53 | | | 62 | | | |
| 21 | Manufacture of pulp, paper and paper products | 7 | 0,1 | 1 | | | 6 | | | |
| 22 | Publishing, printing and reproduction of recorded media | 41 | 0,3 | 2 | | | 39 | | | |
| 23 | Manufacture of coke, refined petroleum products and nuclear fuel | 2 | 0,0 | | | | 2 | | | |
| 24 | Manufacture of chemicals and chemical products | 15 | 0,1 | | | | 15 | | | |
| 25 | Manufacture of rubber and plastic products | 50 | 0,4 | 1 | | | 49 | | | |
| 26 | Manufacture of other non-metallic mineral products | 87 | 0,7 | 35 | | | 52 | | | |
| 27 | Manufacture of basic metals | 6 | 0,0 | 1 | | | 5 | | | |
| 28 | Manufacture of fabricated metal products, except machinery and equipment | 169 | 1,4 | 70 | | | 98 | 1 | | |
| 29 | Manufacture of machinery and equipment n.e.c. | 13 | 0,1 | 1 | | | 12 | | | |
| 30 | Manufacture of office machinery and computers | 2 | 0,0 | | | | 2 | | | |
| 31 | Manufacture of electrical machinery and apparatus n.e.c. | 10 | 0,1 | | | | 10 | | | |
| 32 | Manufacture of radio, television and communication equipment and apparatus | 2 | 0,0 | | | | 2 | | | |
| 33 | Manufacture of medical, precision and optical instruments, watches and clocks | 22 | 0,2 | 6 | | | 16 | | | |
| 34 | Manufacture of motor vehicles, trailers and semi- trailers | 5 | 0,0 | | | | 5 | | | |
| 35 | Manufacture of other transport equipment | 23 | 0,2 | 6 | | | 16 | 1 | | |
| 36 | Manufacture of furniture; manufacturing n.e.c. | 68 | 0,5 | 26 | | | 42 | | | |
| 37 | Recycling | 49 | 0,4 | 4 | | | 43 | 2 | | |
| 40 | Electricity, gas, steam and hot water supply | 15 | 0,1 | | | | 14 | 1 | | |
| 41 | Collection, purification and distribution of water | 4 | 0,0 | 2 | | | 2 | | | |
| 45 | Construction | 2031 | 16,3 | 558 | | | 1469 | 4 | | |

Table no. 11

**Number of companies registered and the amount
of subscribed capital, by county in June 2007**

| County | Total registered companies | | Subscribed capital | | Average subscribed capital on company |
|----------------------|----------------------------|--------------|--------------------|--------------|---------------------------------------|
| | No. | % | thousand RONI | % | thousand RONI |
| 0 | 1 | 2 | 3 | 4 | 5 |
| Total ROMÂNIA | 8639 | 100,0 | 594576,3 | 100,0 | 69,2 |
| ALBA | 132 | 1,5 | 40,6 | *** | 0,3 |
| ARAD | 200 | 2,3 | 1599,8 | 0,3 | 8,0 |
| ARGES | 229 | 2,7 | 813,1 | 0,1 | 3,6 |
| BACAU | 159 | 1,8 | 49,2 | *** | 0,3 |
| BIHOR | 299 | 3,5 | 509,3 | 0,1 | 1,7 |
| BISTRITA-NASAUD | 113 | 1,3 | 102,3 | 0,0 | 0,9 |
| BOTOSANI | 58 | 0,7 | 55,0 | *** | 0,9 |
| BRASOV | 305 | 3,5 | 292,7 | 0,0 | 1,0 |
| BRAILA | 83 | 1,0 | 149,6 | 0,0 | 1,8 |
| BUZAU | 127 | 1,5 | 317,4 | 0,1 | 2,5 |
| CARAS-SEVERIN | 105 | 1,2 | 114,8 | 0,0 | 1,1 |
| CALARASI | 63 | 0,7 | 18,4 | *** | 0,3 |
| CLUJ | 481 | 5,6 | 7022,7 | 1,2 | 14,6 |
| CONSTANTA | 381 | 4,4 | 1822,6 | 0,3 | 4,8 |
| COVASNA | 55 | 0,6 | 55,7 | *** | 1,0 |
| DAMBOVITA | 133 | 1,5 | 328,2 | 0,1 | 2,5 |
| DOLJ | 202 | 2,3 | 411,4 | 0,1 | 2,0 |
| GALATI | 160 | 1,9 | 77,7 | 0,0 | 0,5 |
| GIURGIU | 76 | 0,9 | 401,1 | 0,1 | 5,3 |
| GORJ | 82 | 0,9 | 46,0 | *** | 0,6 |
| HARGHITA | 115 | 1,3 | 171,5 | 0,0 | 1,5 |
| HUNEDOARA | 116 | 1,3 | 70212,9 | 11,8 | 605,3 |
| IALOMITA | 58 | 0,7 | 240,7 | 0,0 | 4,2 |
| IASI | 282 | 3,3 | 665,6 | 0,1 | 2,4 |
| MARAMURES | 180 | 2,1 | 96,1 | 0,0 | 0,5 |
| MEHEDINTI | 72 | 0,8 | 24,4 | *** | 0,3 |
| MURES | 187 | 2,2 | 277,0 | 0,0 | 1,5 |
| NEAMT | 136 | 1,6 | 193,2 | 0,0 | 1,4 |
| OLT | 74 | 0,9 | 38,7 | *** | 0,5 |
| PRAHOVA | 291 | 3,4 | 1143,5 | 0,2 | 3,9 |
| SALAJ | 91 | 1,1 | 111,5 | 0,0 | 1,2 |
| SATU MARE | 125 | 1,4 | 134,2 | 0,0 | 1,1 |
| SIBIU | 203 | 2,3 | 3106,9 | 0,5 | 15,6 |
| SUCEAVA | 151 | 1,7 | 97,1 | 0,0 | 0,6 |
| TELEORMAN | 80 | 0,9 | 27,2 | *** | 0,3 |
| TIMIS | 392 | 4,5 | 600,4 | 0,1 | 1,5 |
| TULCEA | 58 | 0,7 | 14,4 | *** | 0,2 |
| VASLUI | 72 | 0,8 | 51,4 | *** | 0,7 |
| VALCEA | 80 | 0,9 | 591,7 | 0,1 | 7,4 |
| VRANCEA | 84 | 1,0 | 88,7 | 0,0 | 1,1 |
| MUN. BUCURESTI | 2022 | 23,4 | 361957,1 | 60,9 | 181,3 |
| ILFOV | 327 | 3,8 | 140504,5 | 23,6 | 431,0 |

Note: The average does not include filials because according to the Law no.31/1990 they are not juridical persons

*** Less than 0,01%

Table no. 12

**Number of registered companies and the amount
of subscribed capital by category,
in June 2007**

| Company type | Total registered companies | | Subscribed capital | | Average subscribed capital on company |
|----------------------|----------------------------|--------------|--------------------|--------------|---------------------------------------|
| | No. | % | thousand RONI | % | thousand RONI |
| 0 | 1 | 2 | 3 | 4 | 5 |
| Total ROMÂNIA | 8639 | 100,0 | 594576,3 | 100,0 | 69,2 |
| SNC | 1 | 0,0 | 0,1 | *** | 0,1 |
| SCS | | | | | |
| SA | 83 | 1,0 | 312358,1 | 52,5 | 4399,4 |
| SRL | 8555 | 99,0 | 282218,0 | 47,5 | 33,0 |
| SCA | | | | | |

Note: The average does not include filials because according to the Law no.31/1990 they are not juridical persons

*** Less than 0,01%

Diagram no.5

