



MINISTRY OF JUSTICE

THE NATIONAL TRADE REGISTER OFFICE

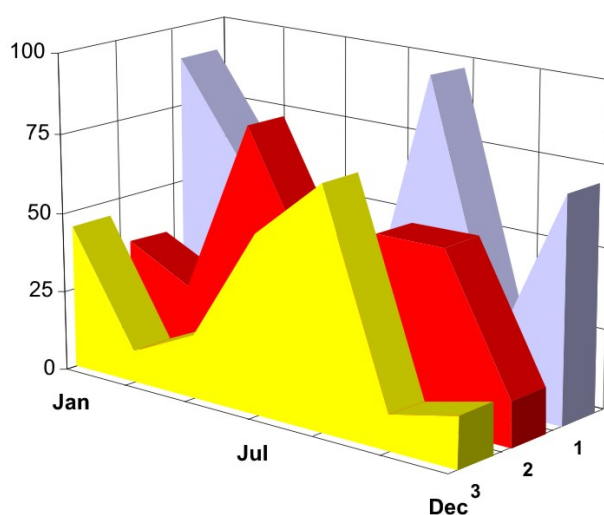
București, Bd. Unirii nr. 74, Bl. J3b, tronson II+III, sector 3; Telefon: +40 21 316.08.04, 316.08.10; Fax: +40 21 316.08.03 Cod poștal: 030837
Website: www.onrc.ro; E-mail: onrc@onrc.ro; Cod de identificare Fiscală: 14942091

PROCEEDINGS IN THE CENTRAL TRADE REGISTER

STATISTICAL SYNTHESIS

OF

RECORDS IN THE CENTRAL TRADE REGISTER
- the 31th of May 2007 - provisional data -



- ISSUE No. 186 -

**MINISTRY OF JUSTICE
THE NATIONAL TRADE REGISTER OFFICE**

- Operations of incorporation of companies, changes in statutory documents and strike-off of companies are based on Law No.26/1990 reissued, Law No.31/1990, reissued, OUG No.76/2001, reissued and Methodology Norms No. P/608/1998.

- This paper presents the trend in operations registered in The Trade Register Office attached to the law court of Bucharest and in the Trade Register Offices attached to the law court in each county of Romania.

- Information recorded in the Central Trade Register concern operations compulsory by law to be registered in the trade registers within the 42 trade register offices attached to the law courts.

• No part of the content of this publication, in original or in any modified format, September be reproduced, stored in a retrieval system, or transmitted, in any form or by any means, without the prior permission in writing of The Ministry of Justice – The National Trade Register Office.

• The content of this publication September be referred to in articles, studies, books, as supporting or explanatory data under the condition only, the source of the information to be clearly and precisely specified.

1	Explanatory Note	1
2.1	Data for December 1990 –May 2007	3
	Table no.1 – Operations registered in the Trade Register, by categories during the period of December 1990 –May 2007, in total by country and counties, rate of categories of operations in total operations country	3
	Table no.1.a – Operations registered in the Trade Register, by categories during the period of December 1990 –May 2007, in total by country and counties, counties’ rate in total country	4
	Table no. 3 – Number and structure of incorporations in the Trade Register, by years, during the period of December 1990-May 2007	5
	Table no.4 – The number of incorporations in the Trade Register, by counties and sources of capital, in the period December 1990 -May 2007	6
	Table no. 5 – The number of incorporations in the Trade Register, by counties and categories, during the period of December 1990 –May 2007	7
	Table no. 6 – The number of incorporations in the Trade Register, by field of activity and categories, during the period of December 1990 -May 2007	8
2.2	Data for May 2007	10
	Table no. 7 – Operations carried on with the Trade Registers, by counties and categories, in May 2007	10
	Table no. 8 – The number of incorporations in the Trade Register, by counties and sources of capital, in May 2007	11
	Table no. 9 – The number of incorporations in the Trade Register, by counties and category in May 2007	12
	Table no. 10 –The number of incorporations in the Trade Register, by field of activity and categories in May 2007	13
	Table no. 11 – Number of companies registered and the amount of subscribed capital, by county in May 2007	15
	Table no. 12– Number of registered companies and the amount of subscribed capital by category, in May 2007	16
	Diagram no. 5 – Average subscribed capital on company in May 2007	16

The Trade Register Office is set-up by Law No. 26/1990, reissued and modified by OUG No. 129/2002, became an active institution since December 1990 and is structured in two levels:

- the national level, represented by the National Trade Register Office organised under the Ministry of Justice
- the local level, represented by the 42 trade register offices attached to the law courts and co-ordinated by the National Trade Register Office

The categories of businessmen compulsory to register in the trade register are:

- natural persons tradesmen and family associations doing usually commercial acts, commercial companies, national companies, companies under state supervision, and co-operative organisations
- subsidiaries registered as commercial companies and legal persons following the legal proceedings of set-up, activity and incorporation according to the type of the legally set-up company.

Usual Terms:

- incorporation – represents the registration of the company in the trade registry awarding the quality of legal person.

- other statutory documents – represent the official registration of the changes occurred in a company's life, such as: changes in headquarters' address, increase or decrease of the issued capital, merger, liquidation, strike-off, etc.

- strike-off – represents the removal of a company from the trade registry, due to dissolution and liquidation, being also the very moment the company loses its quality of legal person. Data also include the companies under the provisions of Law No. 314/2001.

- change of certificate – represents the obligation of companies set-up before OGU No. 76/2001 republished came in force, to request the incorporation certificate and fiscal registration certificate to be replaced with the new registration certificate containing the given unique registration code.

The ratio of these changes is being calculated as a proportion between the effective number of changes and the number of active companies due to operate the change.

- active company from the legal point of view – a company registered in the trade register and which is not affected by any of the situations leading to the temporary or permanently loss of this status (e.g. dissolution, liquidation, strike-off)

- operations represent all the records in the trade registry including incorporations, other statutory documents and strike-off of companies, irrespective of the object of activity, company's type and origin of the subscribed capital (local or foreign investment).

• **Terms used in tables and charts**

➤ **Number of companies:** represents, depending on the specific table, the number of companies incorporated in the related period, the number of companies being struck-off from the trade registry.

➤ **Amount of the subscribed capital:**

- **total, in local currency:** the amount of the subscribed capital resulted from totalising the amount subscribed (in cash and in kind) in local currency (ROL)

➤ **Regional development:**

North-East: Suceava, Botoșani, Neamț, Iași, Bacău, Vaslui.

South-East: Vrancea, Galați, Buzău, Brăila, Tulcea, Constanța.

South-Muntenia: Argeș, Dâmbovița, Prahova, Teleorman, Giurgiu, Călărași, Ialomița.

South-West Oltenia: Gorj, Vâlcea, Dolj, Mehedinți, Olt.

West: Arad, Caraș-Severin, Hunedoara, Timiș.

North-West: Bihor, Bistrița, Cluj, Satu Mare, Sălaj, Maramureș.

Center: Alba, Brașov, Covasna, Harghita, Mureș, Sibiu.

Bucharest-Ilfov: București, Ilfov.

CAEN code – The Classification of Activities in the National Economy was approved by HG No. 656/1997, modified by Order No 601 of the President of National Institute of Statistics being compatible with the international classification used in statistic reports and official documents. Activities are ranked upon homogeneity principle by sections, divisions, groups and classes.

Common abbreviations

- **PF** - Natural Persons Tradesman
- **AF** - Family association
- **SNC** - General Partnership
- **SCS** - Limited Partnership
- **SA** - Joint stock company
- **SRL** - Limited liability company
- **RA** - Company Under State Supervision
- **OC** - Co-operative organisation

Source:

The integrated IT system of the trade registry is designed by The National Trade Registry Office according to the provisions of the related legislation in force. The source of information is the computerised system of the trade registers handled by the Trade Register Offices attached to the law courts.

Table no. 1

**Operations registered in the Trade Register, by categories
during the period of December 1990 - May 2007 in total by country and counties,
- rate of categories of operations in total operations/country -**

Counties	Total of registered operations		out of which :							
			Registered companies		Changes in statutory documents		out of which : of liquidation, dissolution		Strike off companies	
	No.	%	No.	%	No.	%	No.	%	No.	%
0	1	2	3	4	5	6	7	8	11	12
Total ROMÂNIA	8281986	100,0	1618600	100,0	6171744	100,0	9911	100,0	491642	100,0
ALBA	111752	1,3	25338	1,6	81826	1,3	371	3,7	4588	0,9
ARAD	184428	2,2	39833	2,5	134630	2,2	369	3,7	9965	2,0
ARGES	204904	2,5	41724	2,6	154429	2,5	197	2,0	8751	1,8
BACAU	189180	2,3	40696	2,5	136878	2,2	1003	10,1	11606	2,4
BIHOR	249539	3,0	48801	3,0	186714	3,0	303	3,1	14024	2,9
BISTRITA-NASAUD	102529	1,2	19705	1,2	76824	1,2	72	0,7	6000	1,2
BOTOSANI	77172	0,9	19981	1,2	51953	0,8	66	0,7	5238	1,1
BRASOV	279610	3,4	50383	3,1	218347	3,5	149	1,5	10880	2,2
BRAILA	102721	1,2	22329	1,4	77011	1,2	61	0,6	3381	0,7
BUZAU	155458	1,9	29721	1,8	115538	1,9	146	1,5	10199	2,1
CARAS-SEVERIN	106087	1,3	19996	1,2	78071	1,3	41	0,4	8020	1,6
CALARASI	71322	0,9	16272	1,0	50237	0,8	79	0,8	4813	1,0
CLUJ	373927	4,5	74365	4,6	286769	4,6	197	2,0	12793	2,6
CONSTANTA	354189	4,3	67821	4,2	261525	4,2	926	9,3	24843	5,1
COVASNA	73287	0,9	13856	0,9	55148	0,9	18	0,2	4283	0,9
DAMBOVITA	127719	1,5	30278	1,9	84292	1,4	98	1,0	13149	2,7
DOLJ	211460	2,6	42828	2,6	156382	2,5	215	2,2	12250	2,5
GALATI	232640	2,8	38314	2,4	180642	2,9	125	1,3	13684	2,8
GIURGIU	56028	0,7	13119	0,8	37997	0,6	47	0,5	4912	1,0
GORJ	109042	1,3	19366	1,2	83700	1,4	48	0,5	5976	1,2
HARGHITA	122413	1,5	24668	1,5	93612	1,5	51	0,5	4133	0,8
HUNEDOARA	162036	2,0	33320	2,1	115573	1,9	126	1,3	13143	2,7
IALOMITA	78344	0,9	15140	0,9	57714	0,9	78	0,8	5490	1,1
IASI	284153	3,4	50045	3,1	222998	3,6	597	6,0	11110	2,3
MARAMURES	174953	2,1	41652	2,6	122974	2,0	159	1,6	10327	2,1
MEHEDINTI	84314	1,0	18281	1,1	58241	0,9	55	0,6	7792	1,6
MURES	205843	2,5	40775	2,5	152318	2,5	83	0,8	12750	2,6
NEAMT	175167	2,1	35798	2,2	125497	2,0	304	3,1	13872	2,8
OLT	105005	1,3	22909	1,4	73331	1,2	21	0,2	8765	1,8
PRAHOVA	281992	3,4	53410	3,3	214122	3,5	274	2,8	14460	2,9
SALAJ	71597	0,9	15659	1,0	51402	0,8	29	0,3	4536	0,9
SATU MARE	131255	1,6	27273	1,7	94504	1,5	26	0,3	9478	1,9
SIBIU	177288	2,1	31301	1,9	138776	2,2	31	0,3	7211	1,5
SUCEAVA	194701	2,4	41365	2,6	137736	2,2	29	0,3	15600	3,2
TELEORMAN	88734	1,1	18290	1,1	66174	1,1	49	0,5	4270	0,9
TIMIS	309406	3,7	56573	3,5	237167	3,8	271	2,7	15666	3,2
TULCEA	81961	1,0	16715	1,0	60235	1,0	149	1,5	5011	1,0
VASLUI	95061	1,1	20733	1,3	66064	1,1	197	2,0	8264	1,7
VALCEA	127624	1,5	26803	1,7	92799	1,5	138	1,4	8022	1,6
VRANCEA	105357	1,3	20071	1,2	81223	1,3	51	0,5	4063	0,8
MUN. BUCURESTI	1742384	21,0	307167	19,0	1323119	21,4	2641	26,6	112098	22,8
ILFOV	109404	1,3	25926	1,6	77252	1,3	21	0,2	6226	1,3

*) according to the effect of Law No. 314/2001, art.1 și art. 6

*** Less than 0,01%

Table no. 2

**Operations registered in the Trade Register, by categories
during the period of December 1990 - May 2007, in total by country and counties,
- rate of categories of operations in total operations/country -**

Counties	Total of registered operations		out of which :							
			Registered companies		Changes in statutory documents		out of which : of liquidation, dissolution		Strike off companies	
	No.	%	No.	%	No.	%	No.	%	No.	%
0	1	2	3	4	5	6	7	8	11	12
Total ROMÂNIA	8281986	100,0	1618600	19,5	6171744	74,5	9911	0,1	491642	5,9
ALBA	111752	100,0	25338	22,7	81826	73,2	371	0,3	4588	4,1
ARAD	184428	100,0	39833	21,6	134630	73,0	369	0,2	9965	5,4
ARGES	204904	100,0	41724	20,4	154429	75,4	197	0,1	8751	4,3
BACAU	189180	100,0	40696	21,5	136878	72,4	1003	0,5	11606	6,1
BIHOR	249539	100,0	48801	19,6	186714	74,8	303	0,1	14024	5,6
BISTRITA-NASAUD	102529	100,0	19705	19,2	76824	74,9	72	0,1	6000	5,9
BOTOSANI	77172	100,0	19981	25,9	51953	67,3	66	0,1	5238	6,8
BRASOV	279610	100,0	50383	18,0	218347	78,1	149	0,1	10880	3,9
BRAILA	102721	100,0	22329	21,7	77011	75,0	61	0,1	3381	3,3
BUZAU	155458	100,0	29721	19,1	115538	74,3	146	0,1	10199	6,6
CARAS-SEVERIN	106087	100,0	19996	18,8	78071	73,6	41	0,0	8020	7,6
CALARASI	71322	100,0	16272	22,8	50237	70,4	79	0,1	4813	6,7
CLUJ	373927	100,0	74365	19,9	286769	76,7	197	0,1	12793	3,4
CONSTANTA	354189	100,0	67821	19,1	261525	73,8	926	0,3	24843	7,0
COVASNA	73287	100,0	13856	18,9	55148	75,2	18	0,0	4283	5,8
DAMBOVITA	127719	100,0	30278	23,7	84292	66,0	98	0,1	13149	10,3
DOLJ	211460	100,0	42828	20,3	156382	74,0	215	0,1	12250	5,8
GALATI	232640	100,0	38314	16,5	180642	77,6	125	0,1	13684	5,9
GIURGIU	56028	100,0	13119	23,4	37997	67,8	47	0,1	4912	8,8
GORJ	109042	100,0	19366	17,8	83700	76,8	48	0,0	5976	5,5
HARGHITA	122413	100,0	24668	20,2	93612	76,5	51	0,0	4133	3,4
HUNEDOARA	162036	100,0	33320	20,6	115573	71,3	126	0,1	13143	8,1
IALOMITA	78344	100,0	15140	19,3	57714	73,7	78	0,1	5490	7,0
IASI	284153	100,0	50045	17,6	222998	78,5	597	0,2	11110	3,9
MARAMURES	174953	100,0	41652	23,8	122974	70,3	159	0,1	10327	5,9
MEHEDINTI	84314	100,0	18281	21,7	58241	69,1	55	0,1	7792	9,2
MURES	205843	100,0	40775	19,8	152318	74,0	83	0,0	12750	6,2
NEAMT	175167	100,0	35798	20,4	125497	71,6	304	0,2	13872	7,9
OLT	105005	100,0	22909	21,8	73331	69,8	21	0,0	8765	8,3
PRAHOVA	281992	100,0	53410	18,9	214122	75,9	274	0,1	14460	5,1
SALAJ	71597	100,0	15659	21,9	51402	71,8	29	0,0	4536	6,3
SATU MARE	131255	100,0	27273	20,8	94504	72,0	26	0,0	9478	7,2
SIBIU	177288	100,0	31301	17,7	138776	78,3	31	0,0	7211	4,1
SUCEAVA	194701	100,0	41365	21,2	137736	70,7	29	0,0	15600	8,0
TELEORMAN	88734	100,0	18290	20,6	66174	74,6	49	0,1	4270	4,8
TIMIS	309406	100,0	56573	18,3	237167	76,7	271	0,1	15666	5,1
TULCEA	81961	100,0	16715	20,4	60235	73,5	149	0,2	5011	6,1
VASLUI	95061	100,0	20733	21,8	66064	69,5	197	0,2	8264	8,7
VALCEA	127624	100,0	26803	21,0	92799	72,7	138	0,1	8022	6,3
VRANCEA	105357	100,0	20071	19,1	81223	77,1	51	0,0	4063	3,9
MUN. BUCURESTI	1742384	100,0	307167	17,6	1323119	75,9	2641	0,2	112098	6,4
ILFOV	109404	100,0	25926	23,7	77252	70,6	21	0,0	6226	5,7

*) according to the effect of Law No. 314/2001, art.1 și art. 6

*** Less than 0,01%

Table no.3

**Number and structure of incorporations in the Trade Register, by years,
May 2007**

Period (year, month)	Registered companies		Percentage	
	No.	%	%	
0	1	2	3	
Total, 31 May 2006, out of which	1618600	100,00		
Year 1990	81	0,01		
Year 1991	95840	5,92		
Year 1992	137456	8,49		
Year 1993	117078	7,23		
Year 1994	137445	8,49		
Year 1995	65479	4,05		
Year 1996	62089	3,84		
Year 1997	55663	3,44		
Year 1998	63878	3,95		
Year 1999	57197	3,53		
Year 2000	57291	3,54		
Year 2001	61265	3,79		
Year 2002	84780	5,24		
Year 2003	123582	7,64		
Year 2004	144284	8,91		
Year 2005	157375	9,72		
Year 2006	135211	8,35		
Year 2007 (I - XII) out of which :	62606			100,0
January	10979			17,5
February	13249			21,2
March	14721			23,5
April	10908			17,4
May	12749			20,4

Note: Column 2 reveals the annual structure of incorporations; column 3 reveals the structure by months during the current year.

*** Less than 0,01%

Diagram no.1

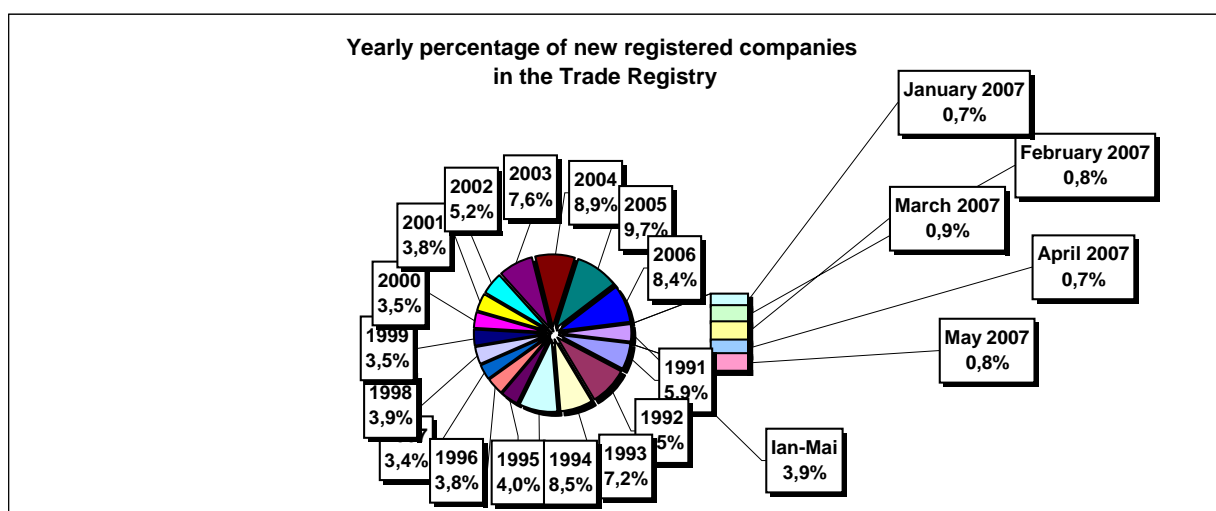


Table no. 4

The number of incorporations in the Trade Register, by counties and sources of capital, in the period December 1990 - May 2007

Counties	Total		out of which:					Ranking by: *	
			Private capital			State majority capital			Mixed capital (state+private)
			out of which:			out of which:			
			PF+AF	Companies	OC	RA	Companies		Companies
No.	%	No.	No.	No.	No.	No.	No.		
0	1	2	3	4	5	6	7	8	9
Total ROMÂNIA	1618600	100,0	416278	1184634	5397	1341	2363	8587	X
ALBA	25338	1,6	8743	16199	141	38	47	170	25
ARAD	39834	2,5	15186	24090	157	27	40	334	15
ARGES	41724	2,6	13490	27856	168	29	29	152	10
BACAU	40696	2,5	13481	26757	158	35	42	223	14
BIHOR	48801	3,0	11257	36991	146	37	62	308	8
BISTRITA-NASAUD	19705	1,2	6996	12454	98	19	29	109	33
BOTOSANI	19981	1,2	9161	10386	122	21	172	119	32
BRASOV	50383	3,1	10445	39523	114	44	87	170	6
BRAILA	22329	1,4	5579	16417	96	28	43	166	28
BUZAU	29721	1,8	8692	20688	142	26	42	131	21
CARAS-SEVERIN	19996	1,2	6902	12755	102	35	65	137	31
CALARASI	16272	1,0	4792	11204	86	18	77	95	38
CLUJ	74365	4,6	18768	55093	150	52	40	262	2
CONSTANTA	67821	4,2	12982	53995	203	51	49	541	3
COVASNA	13856	0,9	4720	8903	68	24	32	109	41
DAMBOVITA	30278	1,9	13801	16086	134	29	75	153	20
DOLJ	42828	2,6	8673	33693	162	40	57	203	9
GALATI	38314	2,4	7615	30340	135	30	51	143	16
GIURGIU	13119	0,8	3143	9655	80	22	109	110	42
GORJ	19366	1,2	4580	14369	184	50	83	100	34
HARGHITA	24668	1,5	9809	14478	86	23	43	229	26
HUNEDOARA	33320	2,1	8776	24051	81	38	92	282	18
IALOMITA	15140	0,9	5792	9122	74	15	46	91	40
IASI	50045	3,1	13732	35701	164	34	70	344	7
MARAMURES	41652	2,6	16815	24514	124	37	39	123	11
MEHEDINTI	18281	1,1	5814	12241	82	19	27	98	36
MURES	40775	2,5	15044	25344	156	30	34	167	13
NEAMT	35798	2,2	13260	22153	161	29	30	165	17
OLT	22909	1,4	9019	13516	161	26	64	123	27
PRAHOVA	53410	3,3	16422	36420	177	50	70	271	5
SALAJ	15659	1,0	6083	9359	107	19	28	63	39
SATU MARE	27273	1,7	8922	18068	88	19	42	134	22
SIBIU	31301	1,9	7594	23289	119	33	108	158	19
SUCEAVA	41365	2,6	19757	21092	202	30	64	220	12
TELEORMAN	18290	1,1	6327	11564	152	21	44	182	35
TIMIS	56573	3,5	9042	46937	140	38	68	348	4
TULCEA	16715	1,0	5760	10617	66	18	42	212	37
VASLUI	20733	1,3	10029	10403	109	16	41	135	29
VALCEA	26803	1,7	10558	15887	168	40	37	113	23
VRANCEA	20071	1,2	6118	13692	104	16	27	114	30
MUN. BUCURESTI	307166	19,0	19271	286423	138	115	103	1116	1
ILFOV	25926	1,6	3328	22309	92	20	13	164	24

*) The total number of incorporations (col 1)

*** Less than 0,01%

Table no. 5

**The number of incorporations in the Trade Register,
by counties and categories, during the period of
December 1990 - May 2007**

County	Total		out of which:						RA	OC
			PF+AF	companies: 1195584						
	SNC	SCS		SRL	SA	No.	No.			
	No.	%	No.	No.	No.			No.	No.	No.
0	1	2	3	4	5	6	7	8	9	
Total ROMÂNIA	1618600	100,0	416278	32654	1567	1129305	32052	1341	5397	
ALBA	25338	1,6	8743	890	11	14963	552	38	141	
ARAD	39833	2,5	15186	53	11	23726	672	27	157	
ARGES	41724	2,6	13490	107	14	27100	816	29	168	
BACAU	40696	2,5	13481	1299	4	24994	724	35	158	
BIHOR	48801	3,0	11257	126	47	36300	888	37	146	
BISTRITA-NASAUD	19705	1,2	6996	146	21	12013	412	19	98	
BOTOSANI	19981	1,2	9161	468	1	9758	450	21	122	
BRASOV	50383	3,1	10445	239	20	38676	845	44	114	
BRAILA	22329	1,4	5579	376	12	15722	516	28	96	
BUZAU	29721	1,8	8692	3747	46	16504	564	26	142	
CARAS-SEVERIN	19996	1,2	6902	117	8	12370	462	35	102	
CALARASI	16272	1,0	4792	609	3	10415	349	18	86	
CLUJ	74365	4,6	18768	2112	18	52010	1255	52	150	
CONSTANTA	67821	4,2	12982	311	23	52790	1461	51	203	
COVASNA	13856	0,9	4720	148	4	8596	296	24	68	
DAMBOVITA	30278	1,9	13801	60	8	15760	486	29	134	
DOLJ	42828	2,6	8673	1560	8	31520	865	40	162	
GALATI	38314	2,4	7615	1574	6	28122	832	30	135	
GIURGIU	13119	0,8	3143	35	8	9509	322	22	80	
GORJ	19366	1,2	4580	29	1	14035	487	50	184	
HARGHITA	24668	1,5	9809	62	6	14198	484	23	86	
HUNEDOARA	33320	2,1	8776	1166	98	22497	664	38	81	
IALOMITA	15140	0,9	5792	266	11	8638	344	15	74	
IASI	50045	3,1	13732	506	111	34500	996	34	164	
MARAMURES	41652	2,6	16815	1927	23	22141	584	37	124	
MEHEDINTI	18281	1,1	5814	427	3	11611	325	19	82	
MURES	40775	2,5	15044	37	34	24819	655	30	156	
NEAMT	35798	2,2	13260	3293	30	18362	663	29	161	
OLT	22909	1,4	9019	1611	1	11605	486	26	161	
PRAHOVA	53410	3,3	16422	3122	14	32740	885	50	177	
SALAJ	15659	1,0	6083	600	4	8556	290	19	107	
SATU MARE	27273	1,7	8922	283	6	17489	466	19	88	
SIBIU	31301	1,9	7594	776	48	22086	645	33	119	
SUCEAVA	41365	2,6	19757	438	8	20349	581	30	202	
TELEORMAN	18290	1,1	6327	272	399	10707	412	21	152	
TIMIS	56573	3,5	9042	609	27	45480	1237	38	140	
TULCEA	16715	1,0	5760	1363	114	8921	473	18	66	
VASLUI	20733	1,3	10029	90	12	10076	401	16	109	
VALCEA	26803	1,7	10558	364	6	15184	483	40	168	
VRANCEA	20071	1,2	6118	356	10	13023	444	16	104	
MUN. BUCURESTI	307167	19,0	19271	1031	297	279621	6693	115	138	
ILFOV	25926	1,6	3328	49	31	21819	587	20	92	

Table no. 6

**The number of incorporations in the Trade Register, by field of activity*
during the period of December 1990 - May 2007**

CAEN segment	Field of activity	Total		out of which:						
				PF+AF	companies:				RA	OC
		1195584								
		No.	%	No.	SNC No.	SCS No.	SRL No.	SA No.	No.	No.
0	1	2	3	4	5	6	7	8	9	10
	Total ROMANIA	1618600	100,0	416278	32654	1567	1129305	32052	1341	5397
1	Agriculture, hunting and related service activities	65122	4,0	16621	2024	44	42475	3788	53	117
2	Forestry, logging and related service activities	8636	0,5	1131	152	3	7028	222	92	8
5	Fishing, fish farming and related service activities	3216	0,2	1845	17	3	1297	54		
10	Mining of coal and lignite; extraction of peat	118	0,0	2			80	32	4	
11	Extraction of crude petroleum and natural gas; service activities incidental to oil and gas extraction, excluding surveying	351	0,0	16	1		164	124	46	
12	Mining of uranium and thorium ores	133	0,0	32			95	6		
13	Mining of metal ores	536	0,0	163			310	55	8	
14	Other mining and quarrying	1690	0,1	109	9	1	1398	170	2	1
15	Manufacture of food products and beverages	73927	4,6	14696	3260	149	53711	1858	5	248
16	Manufacture of tobacco products	291	0,0	47			212	31	1	
17	Manufacture of textiles	11856	0,7	2416	556	16	8317	406		145
18	Manufacture of wearing apparel; dressing and dyeing of fur	21224	1,3	4849	875	38	14798	358	1	305
19	Tanning and dressing of leather; manufacture of luggage, handbags, saddlery, harness and footwear	5386	0,3	918	112	6	4175	123	1	51
20	Manufacture of wood and of products of wood and cork, except furniture; manufacture of articles of straw and plaiting materials	25559	1,6	9119	575	29	15286	499	9	42
21	Manufacture of pulp, paper and paper products	1830	0,1	126	21	1	1571	98		13
22	Publishing, printing and reproduction of recorded media	12105	0,7	976	317	21	10362	405	14	10
23	Manufacture of coke, refined petroleum products and nuclear fuel	261	0,0	24			201	34	2	
24	Manufacture of chemicals and chemical products	3759	0,2	120	89	1	3159	378	6	6
25	Manufacture of rubber and plastic products	6392	0,4	580	314	7	5206	260		24
26	Manufacture of other non-metallic mineral products	9520	0,6	2923	212	6	5974	386	5	14
27	Manufacture of basic metals	2460	0,2	172	39	3	2028	208	3	7
28	Manufacture of fabricated metal products, except machinery and equipment	17803	1,1	4432	361	23	12190	724	11	62
29	Manufacture of machinery and equipment n.e.c.	3874	0,2	110	44	7	3268	421	19	5
30	Manufacture of office machinery and computers	1786	0,1	16	25	4	1661	80		
31	Manufacture of electrical machinery and apparatus n.e.c.	1971	0,1	112	44	6	1659	144		6
32	Manufacture of radio, television and communication equipment and apparatus	880	0,1	63	14	4	725	73		1
33	Manufacture of medical, precision and optical instruments, watches and clocks	2695	0,2	642	17	2	1925	105		4
34	Manufacture of motor vehicles, trailers and semi-trailers	931	0,1	31	31	3	738	126		2
35	Manufacture of other transport equipment	1963	0,1	286	86	7	1385	124	73	2
36	Manufacture of furniture; manufacturing n.e.c.	16004	1,0	4554	284	16	10651	336	5	158
37	Recycling	5052	0,3	438	51	5	4384	173		1
40	Electricity, gas, steam and hot water supply	3026	0,2	839	3	1	1564	531	88	
41	Collection, purification and distribution of water	3567	0,2	1629	2		1657	206	73	
45	Construction	103395	6,4	27011	611	44	73149	2450	53	77

Table no. 6
(continuing)

**The number of incorporations in the Trade Register, by field of activity*
and categories, during the period of December 1990 - May 2007**

CAEN segment	Field of activity	Total		out of which:						RA	OC
				PF+AF	companies: 1195584						
		No.	%		No.	SNC	SCS	SRL	SA	No.	No.
				No.		No.	No.	No.			
0	1	2	3	4	5	6	7	8	9	10	
	Total ROMÂNIA	1618600	100,0	416278	32654	1567	1129305	32052	1341	5397	
50	Sale, maintenance and repair of motor vehicles and motorcycles; retail sale of automotive fuel	55722	3,4	8873	1244		44497	1026	6	42	
51	Wholesale trade and commission trade, except of motor vehicles and motorcycles	208090	12,9	18833	4524	151	180957	3308	35	282	
52	Retail trade, except of motor vehicles and motorcycles; repair of personal and household goods	509382	31,5	180970	11915	558	311052	2495	6	2385	
55	Hotels and restaurants	62323	3,9	14717	1635	126	44889	788	73	95	
60	Land transport; transport via pipelines	84525	5,2	36638	845	37	45904	1058	33	10	
61	Water transport	879	0,1	168	82	8	486	64	70	1	
62	Air transport	304	0,0	18			228	48	10		
63	Supporting and auxiliary transport activities; activities of travel agencies	10803	0,7	734	220	14	9287	441	96	11	
64	Post and telecommunications	7708	0,5	827	11	1	6550	305	11	3	
65	Financial intermediation, except insurance and pension funding	6606	0,4	147	15		3002	2407	2	1033	
66	Insurance and pension funding, except compulsory social security	2059	0,1	613	1		515	929		1	
67	Activities auxiliary to financial intermediation	7192	0,4	1283	7	2	5604	288		8	
70	Real estate activities	25956	1,6	772	28	9	24464	659	17	7	
71	Renting of machinery and equipment without operator and of personal and household goods	3700	0,2	700	116	8	2709	96	70	1	
72	Computer and related activities	25094	1,6	5374	120	13	19198	384	2	3	
73	Research and development	1777	0,1	251	11	2	1295	173	43	2	
74	Other business activities	117190	7,2	24443	794	74	90032	1680	106	60	
75	Public administration and defence; compulsory social security	363	0,0	91	5		219	26	21	1	
80	Education	7319	0,5	3682	62	6	3504	65			
85	Health and social work	16718	1,0	2146	233	15	14236	84	3	1	
90	Sewage and refuse disposal, sanitation and similar activities	994	0,1	106	13	2	743	110	18		
91	Activities of membership organizations n.e.c.	214	0,0	94	1		101	15		3	
92	Recreational, cultural and sporting activities	17666	1,1	4886	202	14	12180	303	69	12	
93	Other service activities	27666	1,7	12181	418	42	14515	307	76	126	
95	Activities of households as employers of domestic staff	949	0,1	624	6	1	314	3		1	
96	Extra-territorial organizations and bodies	11	0,0	11							

*)Field of activity declared when registered, according to CAEN classification

Table no. 8

**The number of incorporations in the Trade Register,
by counties and sources of capital,
in May 2007**

County	Total		out of which:					Ranking by: *	
			Private capital			State majority capital			Mixed capital (state+private)
			out of which:			out of which:			
			PF+AF	Companies	OC	RA	Companies		Companies
No.	%	No.	No.	No.	No.	No.	No.		
0	1	2	3	4	5	6	7	8	9
Total ROMÂNIA	12749	100,0	3903	8843	1	1		1	X
ALBA	254	2,0	88	166					16
ARAD	295	2,3	128	166		1			17
ARGES	324	2,5	133	191					42
BACAU	303	2,4	88	215					3
BIHOR	446	3,5	170	276					14
BISTRITA-NASAUD	165	1,3	62	103					20
BOTOSANI	172	1,3	107	65					10
BRASOV	440	3,5	135	305					4
BRAILA	141	1,1	28	113					27
BUZAU	194	1,5	78	116					6
CARAS-SEVERIN	131	1,0	43	88					29
CALARASI	96	0,8	33	63					19
CLUJ	706	5,5	218	488					18
CONSTANTA	514	4,0	122	392					12
COVASNA	108	0,8	50	58					35
DAMBOVITA	232	1,8	96	136					23
DOLJ	258	2,0	74	184					22
GALATI	289	2,3	88	201					9
GIURGIU	112	0,9	36	76					1
GORJ	128	1,0	35	93					7
HARGHITA	259	2,0	147	112					25
HUNEDOARA	226	1,8	59	167					13
IALOMITA	93	0,7	30	63					38
IASI	443	3,5	141	302					34
MARAMURES	335	2,6	137	197	1				37
MEHEDINTI	105	0,8	37	68					11
MURES	295	2,3	111	184					2
NEAMT	267	2,1	138	129					24
OLT	119	0,9	32	87					36
PRAHOVA	428	3,4	181	247					28
SALAJ	150	1,2	62	88					15
SATU MARE	229	1,8	102	127					26
SIBIU	274	2,1	86	188					40
SUCEAVA	353	2,8	189	164					30
TELEORMAN	116	0,9	41	75					8
TIMIS	521	4,1	128	393					32
TULCEA	98	0,8	41	57					31
VASLUI	136	1,1	65	71					33
VALCEA	172	1,3	65	107					5
VRANCEA	157	1,2	56	101					39
MUN. BUCURESTI	2354	18,5	218	2135				1	21
ILFOV	311	2,4	25	286					41

*) The total number of incorporations (col 1)

*** Less than 0,01%

Table no.9

**The number of incorporations in the Trade Register,
by counties and category
in May 2007**

County	Total		out of which:						RA	OC
			PF+AF	companies: 8844						
	SNC	SCS		SRL	SA	No.	No.			
	No.	%	No.	No.	No.			No.	No.	No.
0	1	2	3	4	5	6	7	8	9	
Total ROMÂNIA	12749	100,0	3903	1	2	8781	60	1	1	
ALBA	254	2,0	88			165	1			
ARAD	295	2,3	128			165	1	1		
ARGES	324	2,5	133			188	3			
BACAU	303	2,4	88			214	1			
BIHOR	446	3,5	170			274	2			
BISTRITA-NASAUD	165	1,3	62			102	1			
BOTOSANI	172	1,3	107			65				
BRASOV	440	3,5	135			303	2			
BRAILA	141	1,1	28			113				
BUZAU	194	1,5	78			115	1			
CARAS-SEVERIN	131	1,0	43			88				
CALARASI	96	0,8	33			62	1			
CLUJ	706	5,5	218			484	4			
CONSTANTA	514	4,0	122			391	1			
COVASNA	108	0,8	50			58				
DAMBOVITA	232	1,8	96			136				
DOLJ	258	2,0	74			184				
GALATI	289	2,3	88			200	1			
GIURGIU	112	0,9	36			76				
GORJ	128	1,0	35			92	1			
HARGHITA	259	2,0	147			112				
HUNEDOARA	226	1,8	59			167				
IALOMITA	93	0,7	30			63				
IASI	443	3,5	141			300	2			
MARAMURES	335	2,6	137			197			1	
MEHEDINTI	105	0,8	37			68				
MURES	295	2,3	111			183	1			
NEAMT	267	2,1	138			129				
OLT	119	0,9	32			85	2			
PRAHOVA	428	3,4	181			244	3			
SALAJ	150	1,2	62			86	2			
SATU MARE	229	1,8	102			127				
SIBIU	274	2,1	86			187	1			
SUCEAVA	353	2,8	189			162	2			
TELEORMAN	116	0,9	41			74	1			
TIMIS	521	4,1	128	1		389	3			
TULCEA	98	0,8	41			56	1			
VASLUI	136	1,1	65			71				
VALCEA	172	1,3	65			106	1			
VRANCEA	157	1,2	56			101				
MUN. BUCURESTI	2354	18,5	218		1	2116	19			
ILFOV	311	2,4	25		1	283	2			

Table no. 10

The number of incorporations in the Trade Register, by field of activity*
and categories in May 2007

CAEN segment	Field of activity	Total		out of which:						
				PF+AF	companies: 8844				RA	OC
		SNC	SCS		SRL	SA	No.	No.		
		No.	%	No.	No.	No.			No.	No.
0	1	2	3	4	5	6	7	8	9	10
	Total ROMÂNIA	12749	100,0	3903	1	2	8781	60	1	1
1	Agriculture, hunting and related service activities	471	3,7	289			181	1		
2	Forestry, logging and related service activities	71	0,6	11			59		1	
5	Fishing, fish farming and related service activities	40	0,3	27			13			
10	Mining of coal and lignite; extraction of peat	1	0,0				1			
11	Extraction of crude petroleum and natural gas; service activities incidental to oil and gas extraction, excluding surveying	1	0,0				1			
12	Mining of uranium and thorium ores									
13	Mining of metal ores	1	0,0				1			
14	Other mining and quarrying	16	0,1				16			
15	Manufacture of food products and beverages	104	0,8	40			64			
16	Manufacture of tobacco products									
17	Manufacture of textiles	31	0,2	7			24			
18	Manufacture of wearing apparel; dressing and dyeing of fur	73	0,6	20			53			
19	Tanning and dressing of leather; manufacture of luggage, handbags, saddlery, harness and footwear	21	0,2	2			19			
20	Manufacture of wood and of products of wood and cork, except furniture; manufacture of articles of straw and plaiting materials	126	1,0	56			69	1		
21	Manufacture of pulp, paper and paper products	6	0,0	1			5			
22	Publishing, printing and reproduction of recorded media	57	0,4	6			51			
23	Manufacture of coke, refined petroleum products and nuclear fuel									
24	Manufacture of chemicals and chemical products	17	0,1				16	1		
25	Manufacture of rubber and plastic products	44	0,3	3			41			
26	Manufacture of other non-metallic mineral products	102	0,8	41			61			
27	Manufacture of basic metals	6	0,0				5	1		
28	Manufacture of fabricated metal products, except machinery and equipment	181	1,4	81			100			
29	Manufacture of machinery and equipment n.e.c.	19	0,1	2			17			
30	Manufacture of office machinery and computers	3	0,0				3			
31	Manufacture of electrical machinery and apparatus n.e.c.	2	0,0				2			
32	Manufacture of radio, television and communication equipment and apparatus	1	0,0				1			
33	Manufacture of medical, precision and optical instruments, watches and clocks	19	0,1	2			16	1		
34	Manufacture of motor vehicles, trailers and semi- trailers	3	0,0				3			
35	Manufacture of other transport equipment	15	0,1				15			
36	Manufacture of furniture; manufacturing n.e.c.	110	0,9	33			77			
37	Recycling	41	0,3	2			39			
40	Electricity, gas, steam and hot water supply	16	0,1				15	1		
41	Collection, purification and distribution of water	3	0,0	1			1	1		
45	Construction	2261	17,7	638		1	1619	3		

Table no. 11

**Number of companies registered and the amount
of subscribed capital, by county in May 2007**

County	Total registered companies		Subscribed capital		Average subscribed capital on company
	No.	%	thousand RONI	%	thousand RONI
0	1	2	3	4	5
Total ROMÂNIA	8844	100,0	1348946,1	100,0	153,3
ALBA	166	1,9	230,5	0,0	1,4
ARAD	166	1,9	627,6	0,0	3,8
ARGES	191	2,2	6798,5	0,5	35,6
BACAU	215	2,4	655,8	0,0	3,1
BIHOR	276	3,1	2783,4	0,2	10,1
BISTRITA-NASAUD	103	1,2	694,4	0,1	6,7
BOTOSANI	65	0,7	86,0	***	1,3
BRASOV	305	3,4	19696,8	1,5	64,8
BRAILA	113	1,3	243,1	0,0	2,2
BUZAU	116	1,3	125,8	***	1,1
CARAS-SEVERIN	88	1,0	140,3	0,0	1,6
CALARASI	63	0,7	401,5	0,0	6,5
CLUJ	488	5,5	23706,2	1,8	49,0
CONSTANTA	392	4,4	4101,7	0,3	10,5
COVASNA	58	0,7	30,4	***	0,5
DAMBOVITA	136	1,5	59,2	***	0,4
DOLJ	184	2,1	107,2	***	0,6
GALATI	201	2,3	162,9	0,0	0,8
GIURGIU	76	0,9	151,3	0,0	2,0
GORJ	93	1,1	34,6	***	0,4
HARGHITA	112	1,3	145,5	0,0	1,3
HUNEDOARA	167	1,9	90,4	***	0,5
IALOMITA	63	0,7	38,5	***	0,6
IASI	302	3,4	5566,6	0,4	18,5
MARAMURES	197	2,2	152,5	0,0	0,8
MEHEDINTI	68	0,8	18,3	***	0,3
MURES	184	2,1	685,6	0,1	3,7
NEAMT	129	1,5	150,2	0,0	1,2
OLT	87	1,0	31,7	***	0,4
PRAHOVA	247	2,8	707,2	0,1	2,9
SALAJ	88	1,0	4247,5	0,3	48,8
SATU MARE	127	1,4	76,3	***	0,6
SIBIU	188	2,1	151,0	0,0	0,8
SUCEAVA	164	1,9	156,4	0,0	1,0
TELEORMAN	75	0,8	8114,5	0,6	108,2
TIMIS	393	4,4	1547,9	0,1	4,0
TULCEA	57	0,6	205,5	0,0	3,6
VASLUI	71	0,8	503,3	0,0	7,1
VALCEA	107	1,2	128,6	***	1,2
VRANCEA	101	1,1	57,7	***	0,6
MUN. BUCURESTI	2136	24,2	76436,7	5,7	36,0
ILFOV	286	3,2	1188896,8	88,1	4201,0

Note: The average does not include filials because according to the Law no.31/1990 they are not juridical persons

*** Less than 0,01%

